

Data Path : Z:\pestpcbsrv\HPCHEM1\ECD\_0\Data\P0070121\  
 Data File : P0079243.D  
 Signal(s) : Signal #1: ECD1A.CH Signal #2: ECD2B.CH  
 Acq On : 01 Jul 2021 19:23  
 Operator : DD\AJ  
 Sample : AR1660ICC750  
 Misc :  
 ALS Vial : 4 Sample Multiplier: 1

Instrument :  
 ECD\_0  
 ClientSampleId :  
 AR1660ICC750

Integration File signal 1: autoint1.e  
 Integration File signal 2: autoint2.e  
 Quant Time: Jul 02 04:39:23 2021  
 Quant Method : Z:\pestpcbsrv\HPCHEM1\ECD\_0\methods\P0070121.M  
 Quant Title : GC EXTRACTABLES  
 QLast Update : Fri Jul 02 04:38:30 2021  
 Response via : Initial Calibration  
 Integrator: ChemStation 6890 Scale Mode: Small noise peaks clipped

Volume Inj. : 2 µl  
 Signal #1 Phase : ZB-MR1 Signal #2 Phase: ZB-MR2  
 Signal #1 Info : 30Mx0.32mmx 0.50µ Signal #2 Info : 30M x 0.32mm x 0.25µm

Compound	RT#1	RT#2	Resp#1	Resp#2	ng/ml	ng/ml
-----						
System Monitoring Compounds						
1) SA Tetrachlo...	5.020	4.224	4417160	2157458	74.689	74.859
2) SA Decachlor...	11.147	9.653	3125760	1827931	73.222	70.458
Target Compounds						
3) L1 AR-1016-1	6.351	5.505	1512480	843827	738.484	736.836
4) L1 AR-1016-2	6.375	5.526	2117974	1125812	739.161	744.108
5) L1 AR-1016-3	6.442	5.722	1251256	613258	730.559	746.804
6) L1 AR-1016-4	6.549	5.772	1042891	502565	736.091	743.951
7) L1 AR-1016-5	6.866	6.006	988154	631636	741.110	743.252
31) L7 AR-1260-1	8.047	7.116	1687960	1075357	743.522	756.899
32) L7 AR-1260-2	8.314	7.312	1988040	1288454	728.302	758.025
33) L7 AR-1260-3	8.681	7.472	1516302	1214810	743.081	758.650
34) L7 AR-1260-4	8.914	7.961	1798552	996330	749.560	726.492
35) L7 AR-1260-5	9.251	8.207	3681079	2363598	747.817	711.861

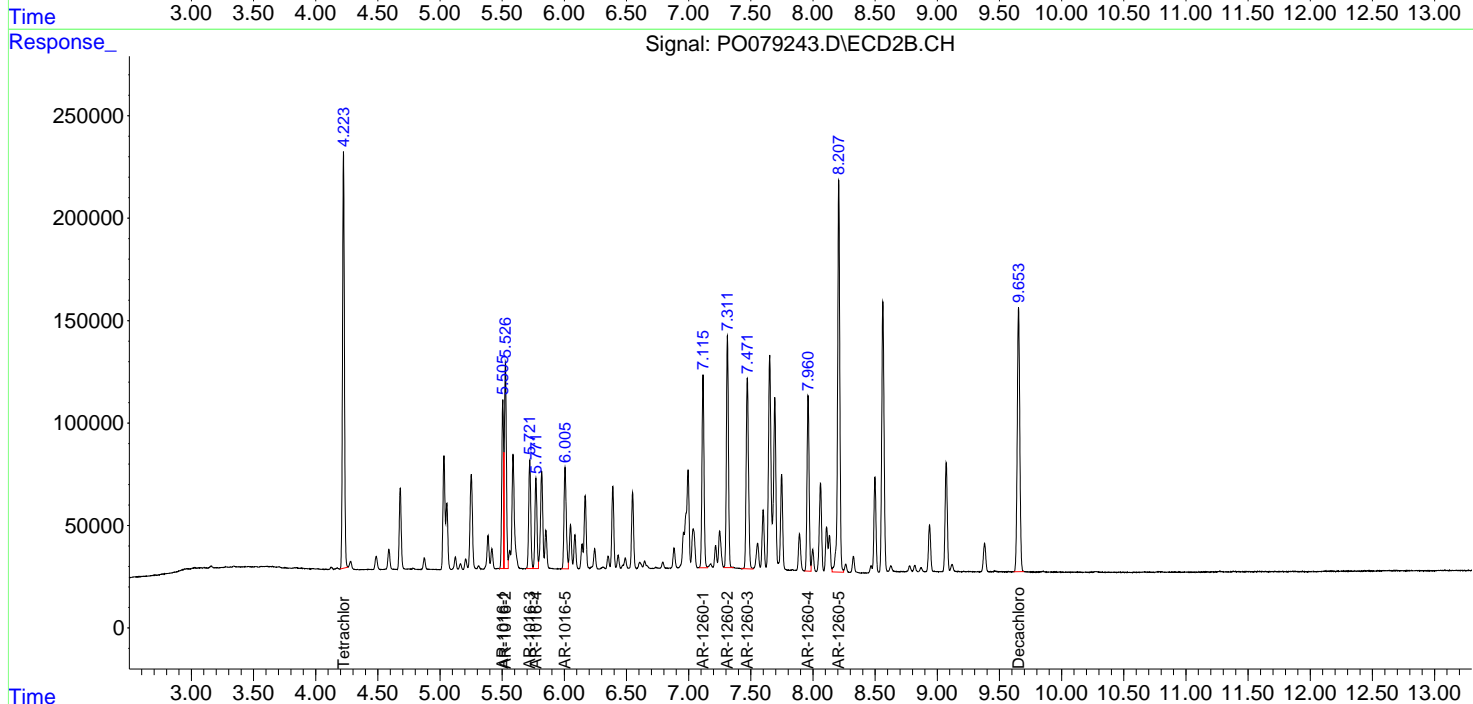
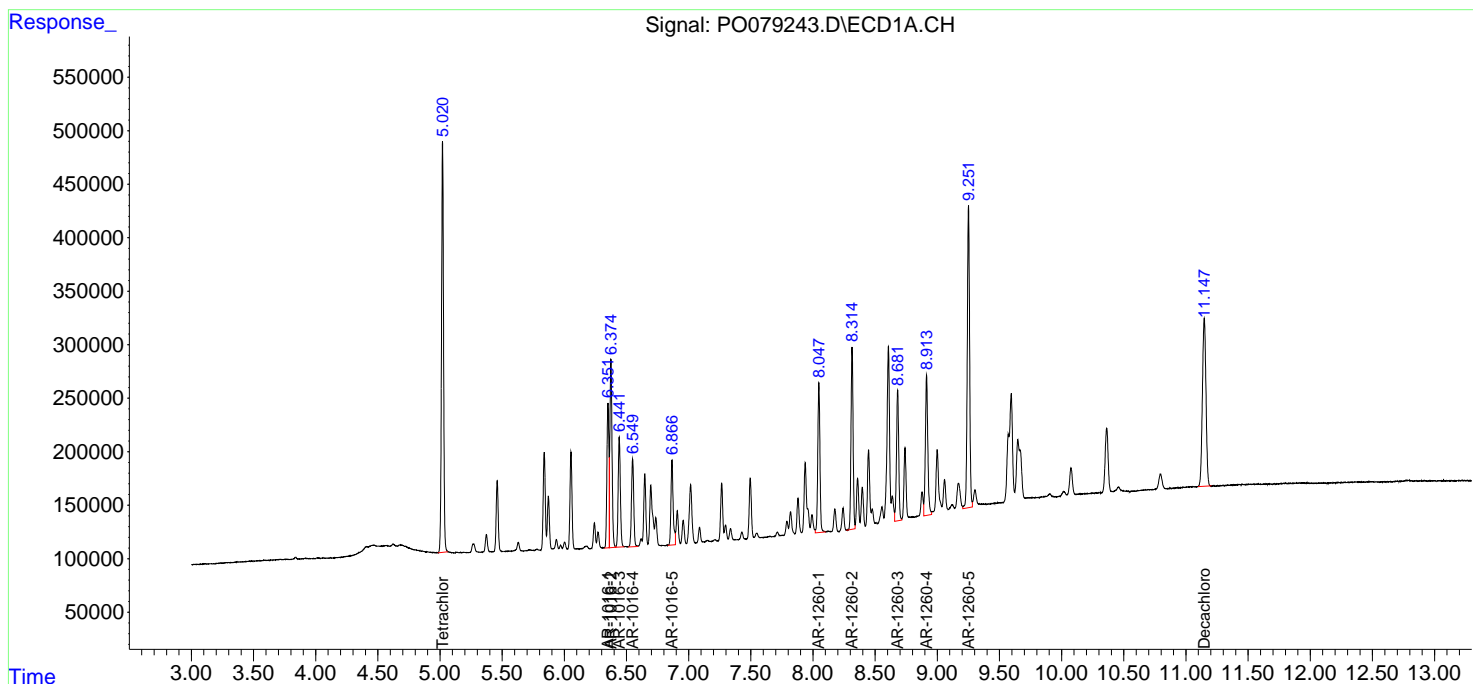
(f)=RT Delta > 1/2 Window (#)=Amounts differ by > 25% (m)=manual int.

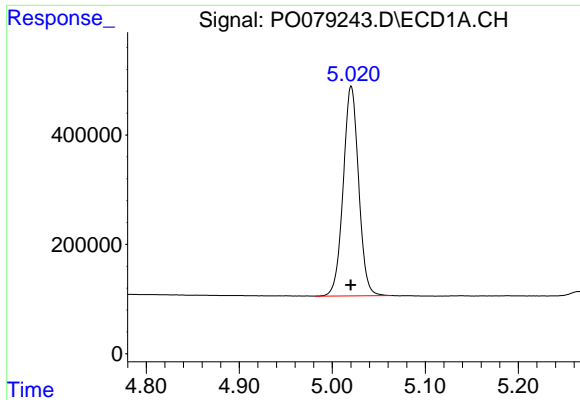
Data Path : Z:\pestpcbsrv\HPCHEM1\ECD\_O\Data\P0070121\  
 Data File : P0079243.D  
 Signal(s) : Signal #1: ECD1A.CH Signal #2: ECD2B.CH  
 Acq On : 01 Jul 2021 19:23  
 Operator : DD\AJ  
 Sample : AR1660ICC750  
 Misc :  
 ALS Vial : 4 Sample Multiplier: 1

Instrument :  
 ECD\_O  
 ClientSampleId :  
 AR1660ICC750

Integration File signal 1: autoint1.e  
 Integration File signal 2: autoint2.e  
 Quant Time: Jul 02 04:39:23 2021  
 Quant Method : Z:\pestpcbsrv\HPCHEM1\ECD\_O\methods\P0070121.M  
 Quant Title : GC EXTRACTABLES  
 QLast Update : Fri Jul 02 04:38:30 2021  
 Response via : Initial Calibration  
 Integrator: ChemStation 6890 Scale Mode: Small noise peaks clipped

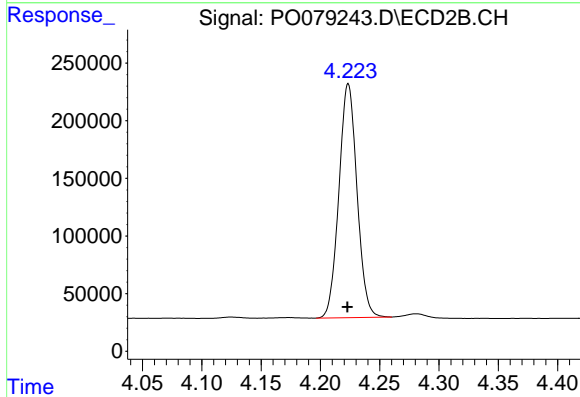
Volume Inj. : 2 µl  
 Signal #1 Phase : ZB-MR1 Signal #2 Phase: ZB-MR2  
 Signal #1 Info : 30Mx0.32mmx 0.50µ Signal #2 Info : 30M x 0.32mm x 0.25µm



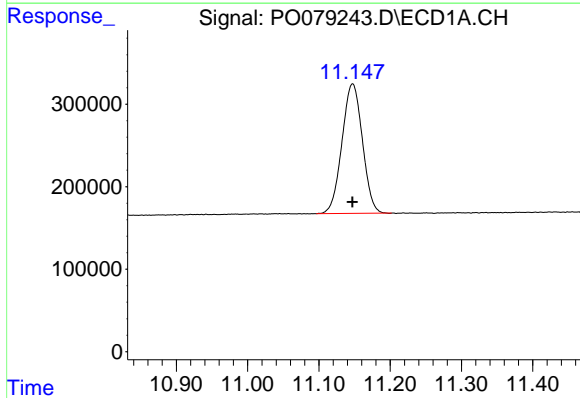


#1 Tetrachloro-m-xylene  
 R.T.: 5.020 min  
 Delta R.T.: 0.000 min  
 Response: 4417160  
 Conc: 74.69 ng/ml

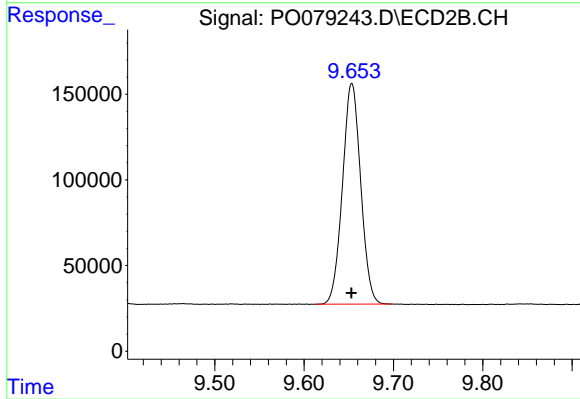
Instrument :  
 ECD\_O  
 ClientSampleId :  
 AR1660ICC750



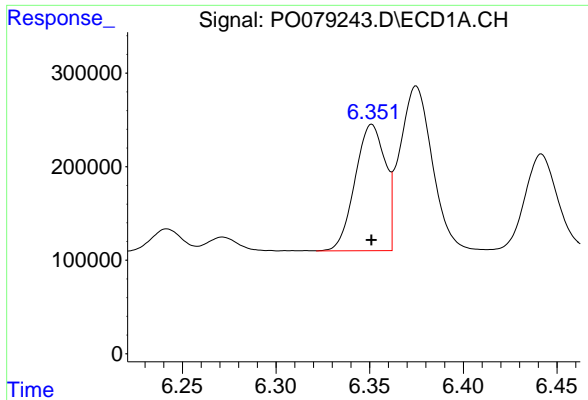
#1 Tetrachloro-m-xylene  
 R.T.: 4.224 min  
 Delta R.T.: 0.000 min  
 Response: 2157458  
 Conc: 74.86 ng/ml



#2 Decachlorobiphenyl  
 R.T.: 11.147 min  
 Delta R.T.: 0.000 min  
 Response: 3125760  
 Conc: 73.22 ng/ml

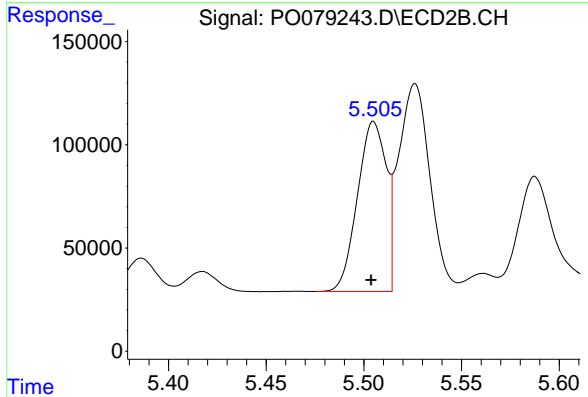


#2 Decachlorobiphenyl  
 R.T.: 9.653 min  
 Delta R.T.: 0.000 min  
 Response: 1827931  
 Conc: 70.46 ng/ml

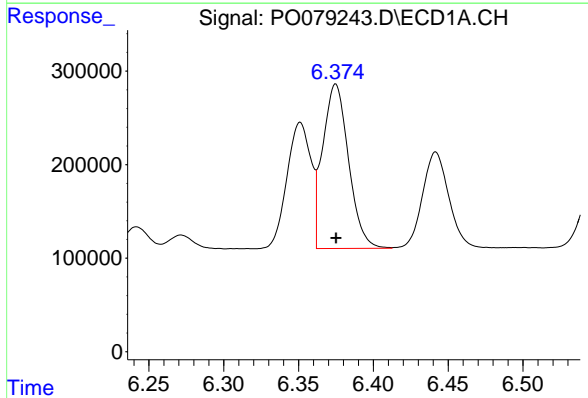


#3 AR-1016-1  
 R.T.: 6.351 min  
 Delta R.T.: 0.000 min  
 Response: 1512480  
 Conc: 738.48 ng/ml

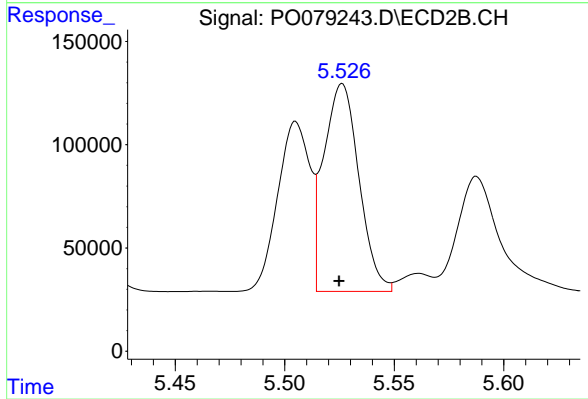
Instrument :  
 ECD\_O  
 ClientSampleId :  
 AR1660ICC750



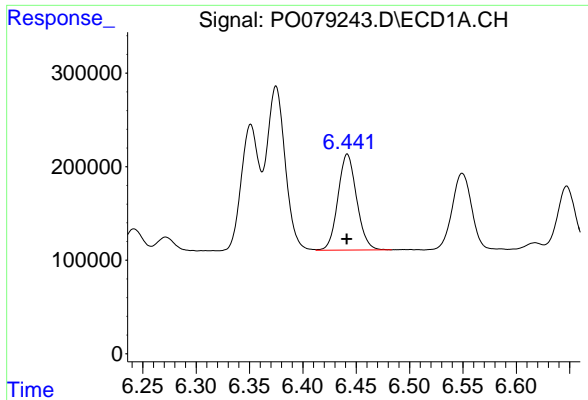
#3 AR-1016-1  
 R.T.: 5.505 min  
 Delta R.T.: 0.001 min  
 Response: 843827  
 Conc: 736.84 ng/ml



#4 AR-1016-2  
 R.T.: 6.375 min  
 Delta R.T.: 0.000 min  
 Response: 2117974  
 Conc: 739.16 ng/ml



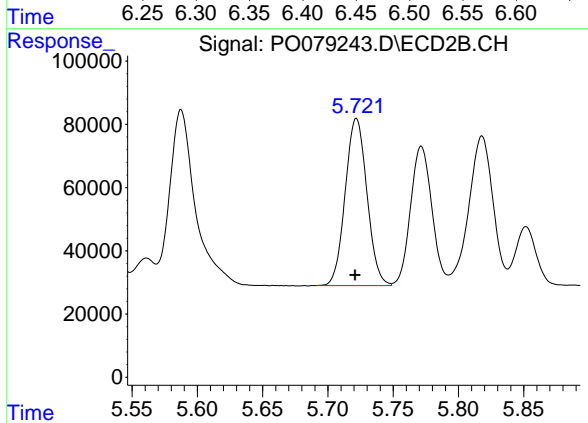
#4 AR-1016-2  
 R.T.: 5.526 min  
 Delta R.T.: 0.001 min  
 Response: 1125812  
 Conc: 744.11 ng/ml



#5 AR-1016-3

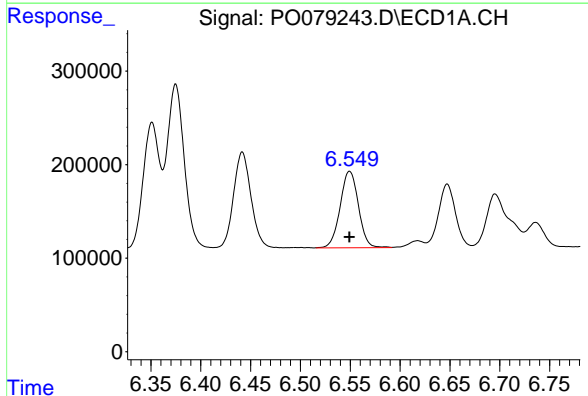
R.T.: 6.442 min  
 Delta R.T.: 0.000 min  
 Response: 1251256  
 Conc: 730.56 ng/ml

Instrument :  
 ECD\_O  
 ClientSampled :  
 AR1660ICC750



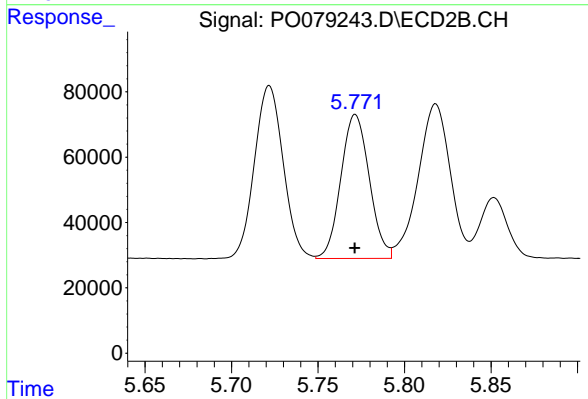
#5 AR-1016-3

R.T.: 5.722 min  
 Delta R.T.: 0.000 min  
 Response: 613258  
 Conc: 746.80 ng/ml



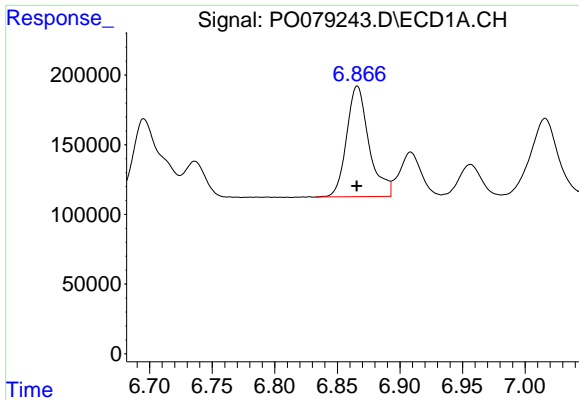
#6 AR-1016-4

R.T.: 6.549 min  
 Delta R.T.: 0.000 min  
 Response: 1042891  
 Conc: 736.09 ng/ml



#6 AR-1016-4

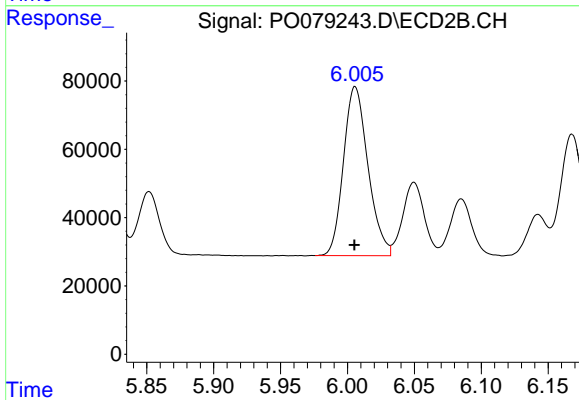
R.T.: 5.772 min  
 Delta R.T.: 0.000 min  
 Response: 502565  
 Conc: 743.95 ng/ml



#7 AR-1016-5

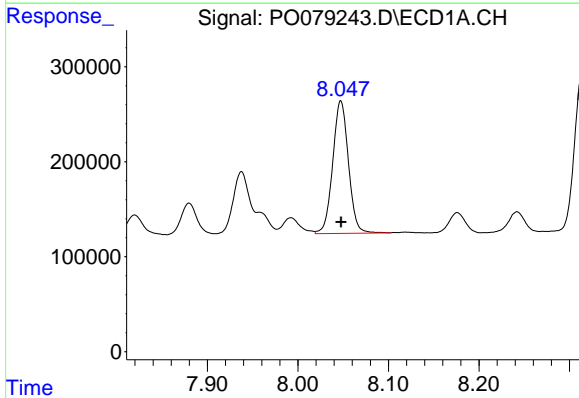
R.T.: 6.866 min  
Delta R.T.: 0.000 min  
Response: 988154  
Conc: 741.11 ng/ml

Instrument :  
ECD\_O  
ClientSampled :  
AR1660ICC750



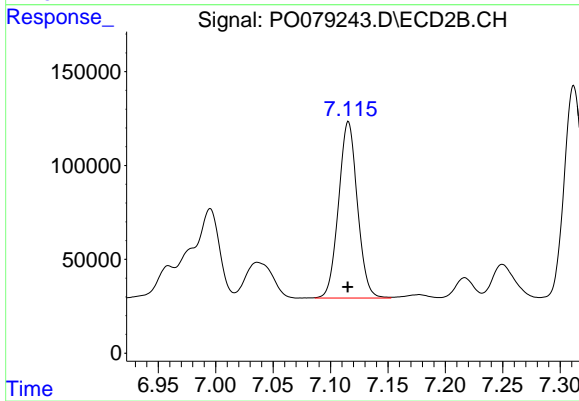
#7 AR-1016-5

R.T.: 6.006 min  
Delta R.T.: 0.000 min  
Response: 631636  
Conc: 743.25 ng/ml



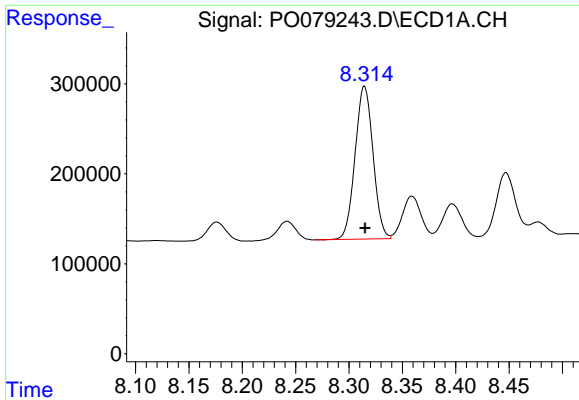
#31 AR-1260-1

R.T.: 8.047 min  
Delta R.T.: 0.000 min  
Response: 1687960  
Conc: 743.52 ng/ml



#31 AR-1260-1

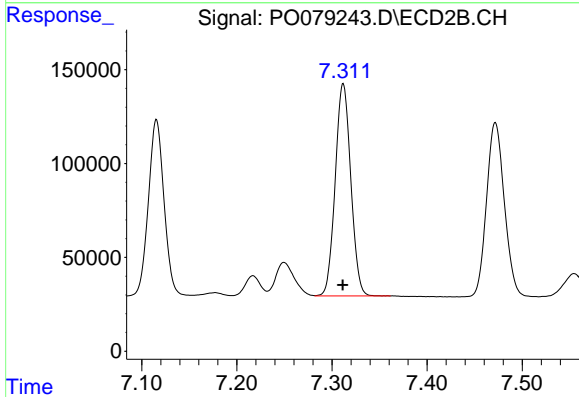
R.T.: 7.116 min  
Delta R.T.: 0.000 min  
Response: 1075357  
Conc: 756.90 ng/ml



#32 AR-1260-2

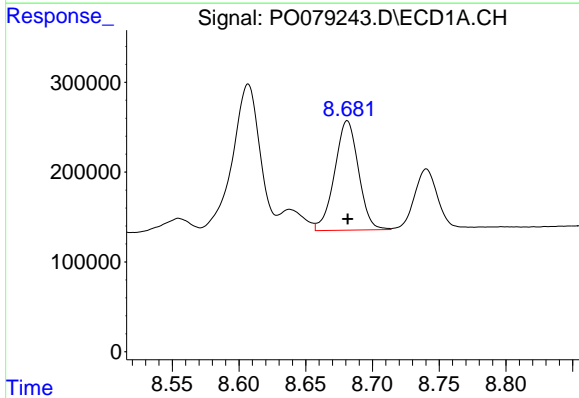
R.T.: 8.314 min  
 Delta R.T.: 0.000 min  
 Response: 1988040  
 Conc: 728.30 ng/ml

Instrument :  
 ECD\_O  
 ClientSampled :  
 AR1660ICC750



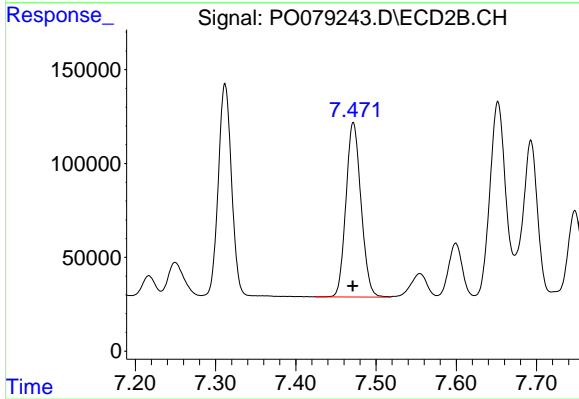
#32 AR-1260-2

R.T.: 7.312 min  
 Delta R.T.: 0.000 min  
 Response: 1288454  
 Conc: 758.03 ng/ml



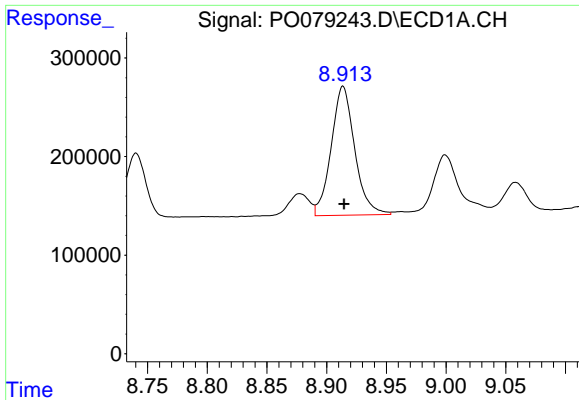
#33 AR-1260-3

R.T.: 8.681 min  
 Delta R.T.: 0.000 min  
 Response: 1516302  
 Conc: 743.08 ng/ml



#33 AR-1260-3

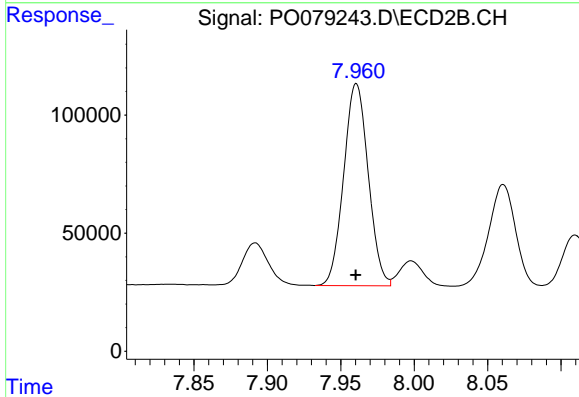
R.T.: 7.472 min  
 Delta R.T.: 0.000 min  
 Response: 1214810  
 Conc: 758.65 ng/ml



#34 AR-1260-4

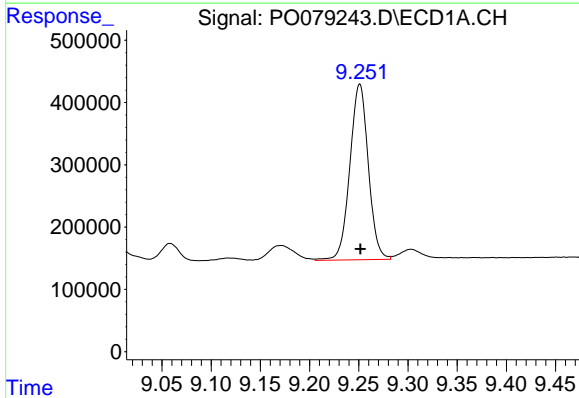
R.T.: 8.914 min  
 Delta R.T.: 0.000 min  
 Response: 1798552  
 Conc: 749.56 ng/ml

Instrument :  
 ECD\_O  
 ClientSampleId :  
 AR1660ICC750



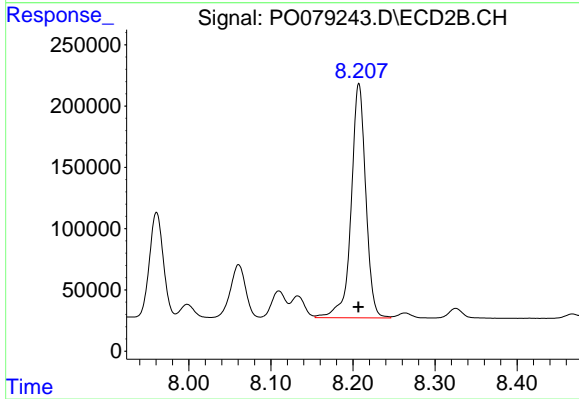
#34 AR-1260-4

R.T.: 7.961 min  
 Delta R.T.: 0.000 min  
 Response: 996330  
 Conc: 726.49 ng/ml



#35 AR-1260-5

R.T.: 9.251 min  
 Delta R.T.: 0.000 min  
 Response: 3681079  
 Conc: 747.82 ng/ml



#35 AR-1260-5

R.T.: 8.207 min  
 Delta R.T.: 0.000 min  
 Response: 2363598  
 Conc: 711.86 ng/ml