

Data Path : Z:\pestpcbsrv\HPCHEM1\ECD\_0\Data\P0070121\  
 Data File : P0079246.D  
 Signal(s) : Signal #1: ECD1A.CH Signal #2: ECD2B.CH  
 Acq On : 01 Jul 2021 20:15  
 Operator : DD\AJ  
 Sample : AR1660ICC050  
 Misc :  
 ALS Vial : 7 Sample Multiplier: 1

Instrument :  
 ECD\_0  
 ClientSampleId :  
 AR1660ICC050

Manual Integrations  
 APPROVED

mohammad  
 7/2/2021 11:04:35 AM

Integration File signal 1: autoint1.e  
 Integration File signal 2: autoint2.e  
 Quant Time: Jul 02 04:40:52 2021  
 Quant Method : Z:\pestpcbsrv\HPCHEM1\ECD\_0\methods\P0070121.M  
 Quant Title : GC EXTRACTABLES  
 QLast Update : Fri Jul 02 04:38:30 2021  
 Response via : Initial Calibration  
 Integrator: ChemStation 6890 Scale Mode: Small noise peaks clipped

Volume Inj. : 2 µl  
 Signal #1 Phase : ZB-MR1 Signal #2 Phase: ZB-MR2  
 Signal #1 Info : 30Mx0.32mmx 0.50µ Signal #2 Info : 30M x 0.32mm x 0.25µm

Compound	RT#1	RT#2	Resp#1	Resp#2	ng/ml	ng/ml
-----						
System Monitoring Compounds						
1) SA Tetrachlo...	5.021	4.223	284897	160319	4.817	5.563m
2) SA Decachlor...	11.147	9.655	214583	147648	5.027	5.691
Target Compounds						
3) L1 AR-1016-1	6.352	5.505	106240	67176	51.873	58.658
4) L1 AR-1016-2	6.376	5.526	149534	85423	52.187	56.461
5) L1 AR-1016-3	6.442	5.722	97829	43611	57.119	53.108
6) L1 AR-1016-4	6.550	5.772	87949	35246	62.076	52.174
7) L1 AR-1016-5	6.866	6.006	68373	42180	51.280	49.634
31) L7 AR-1260-1	8.049	7.117	121120	74949	53.352	52.753
32) L7 AR-1260-2	8.316	7.313	151991	101011	55.681	59.427
33) L7 AR-1260-3	8.682	7.473	115992	99520	56.843	62.150
34) L7 AR-1260-4	8.914	7.962	128265	70799	53.455m	51.625
35) L7 AR-1260-5	9.251	8.208	259735	177832	52.766m	53.559
-----						

(f)=RT Delta > 1/2 Window (#)=Amounts differ by > 25% (m)=manual int.

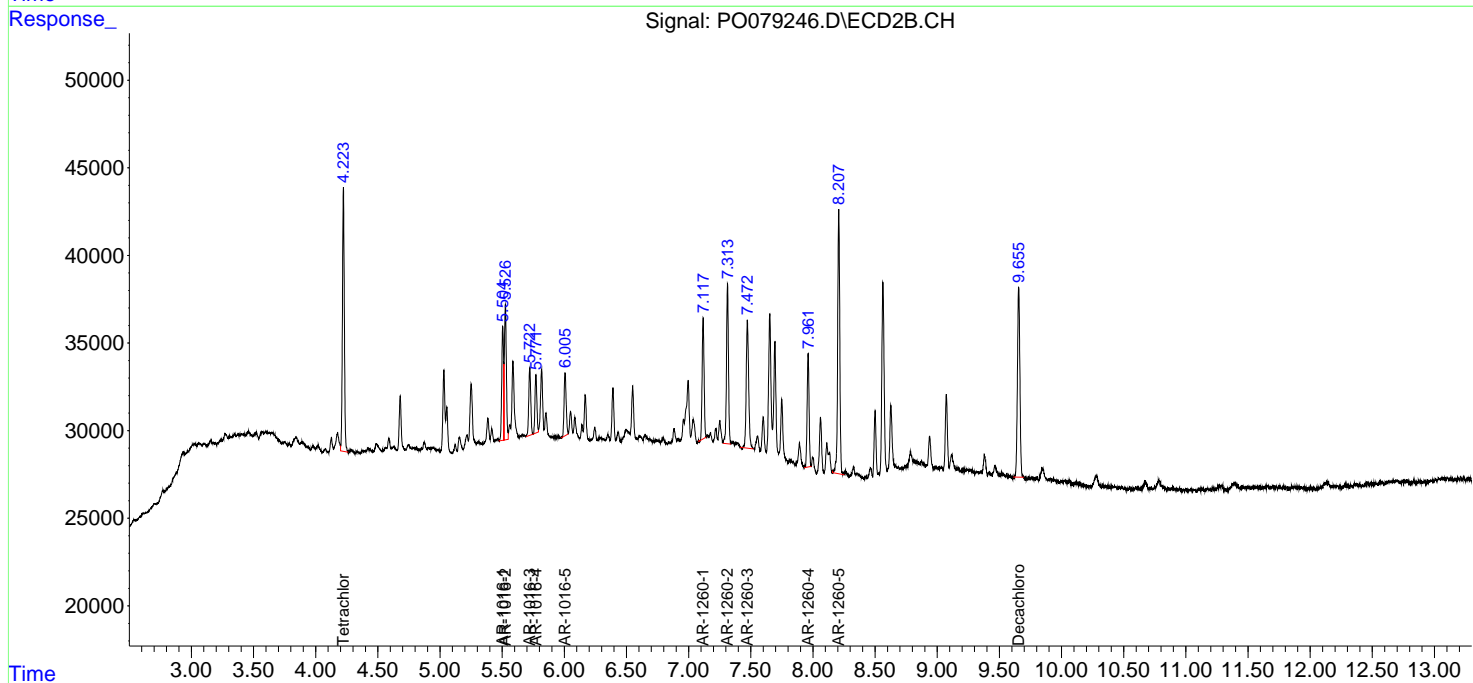
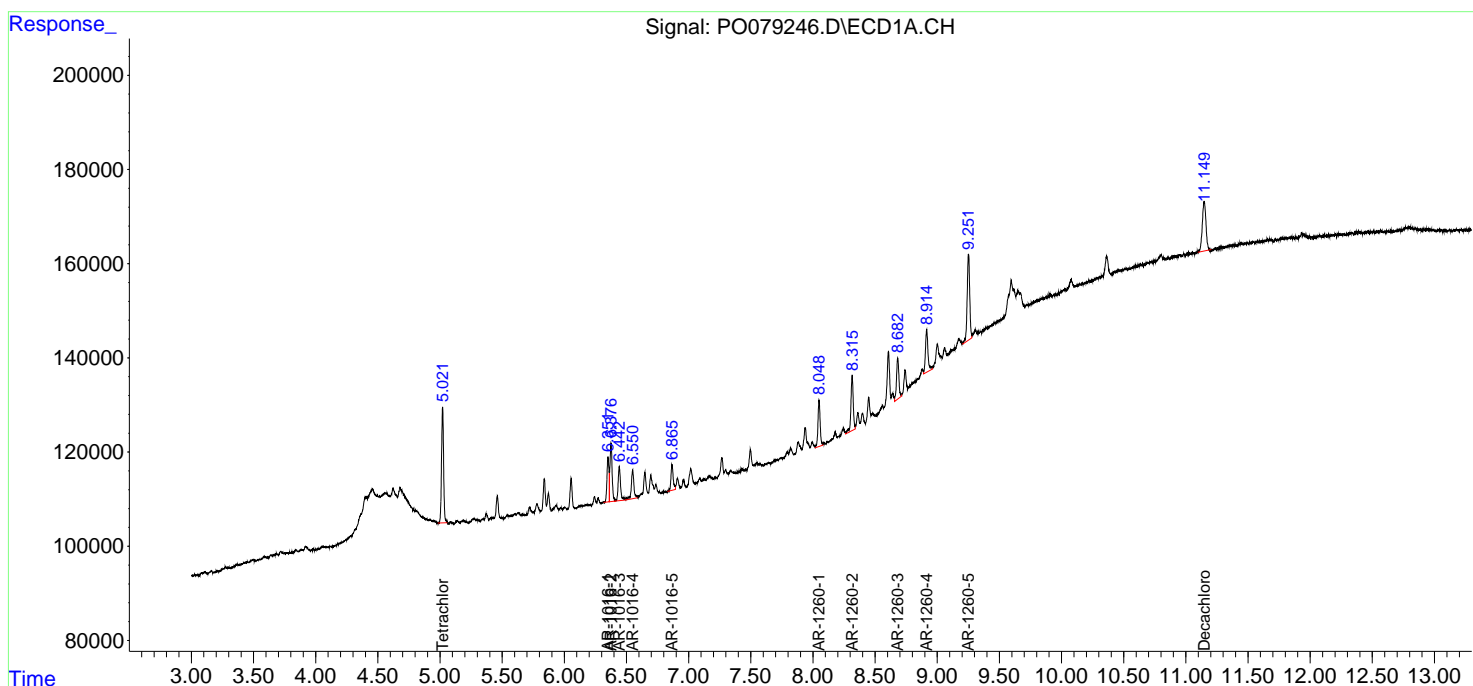
Data Path : Z:\pestpcbsrv\HPCHEM1\ECD\_O\Data\P0070121\  
 Data File : P0079246.D  
 Signal(s) : Signal #1: ECD1A.CH Signal #2: ECD2B.CH  
 Acq On : 01 Jul 2021 20:15  
 Operator : DD\AJ  
 Sample : AR1660ICC050  
 Misc :  
 ALS Vial : 7 Sample Multiplier: 1

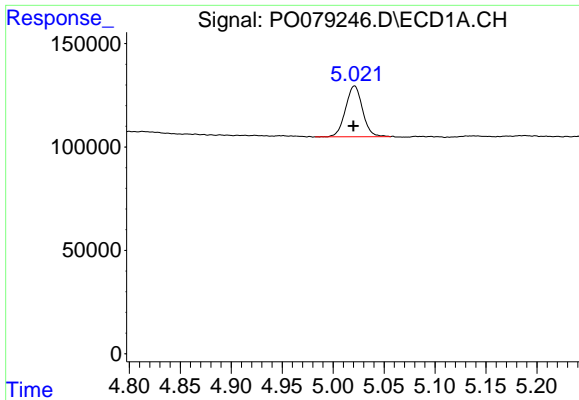
**Instrument :**  
 ECD\_O  
**Client Sampled :**  
 AR1660ICC050

**Manual Integrations**  
**APPROVED**  
 mohammad  
 7/2/2021 11:04:35 AM

Integration File signal 1: autoint1.e  
 Integration File signal 2: autoint2.e  
 Quant Time: Jul 02 04:40:52 2021  
 Quant Method : Z:\pestpcbsrv\HPCHEM1\ECD\_O\methods\P0070121.M  
 Quant Title : GC EXTRACTABLES  
 QLast Update : Fri Jul 02 04:38:30 2021  
 Response via : Initial Calibration  
 Integrator: ChemStation 6890 Scale Mode: Small noise peaks clipped

Volume Inj. : 2 µl  
 Signal #1 Phase : ZB-MR1 Signal #2 Phase: ZB-MR2  
 Signal #1 Info : 30Mx0.32mmx 0.50µ Signal #2 Info : 30M x 0.32mm x 0.25µm

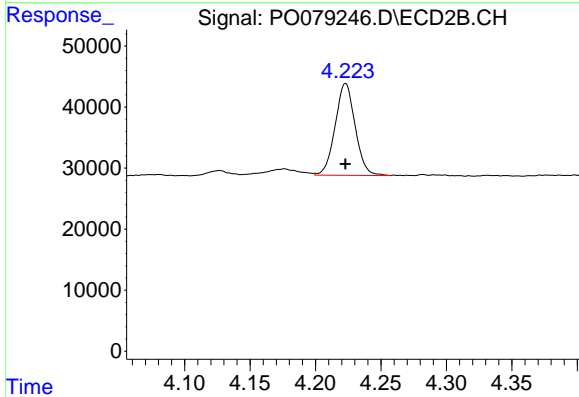




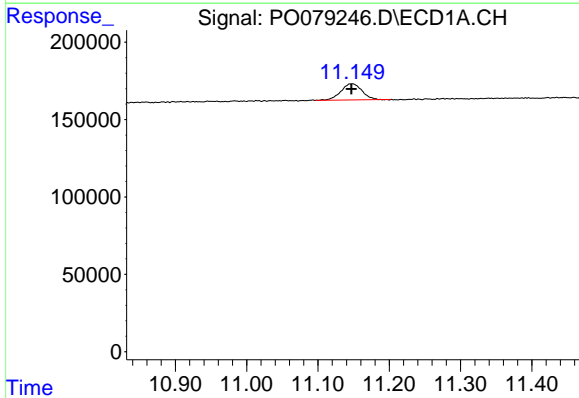
#1 Tetrachloro-m-xylene  
 R.T.: 5.021 min  
 Delta R.T.: 0.001 min  
 Response: 284897  
 Conc: 4.82 ng/ml

**Instrument :**  
 ECD\_O  
**ClientSampled :**  
 AR1660ICC050

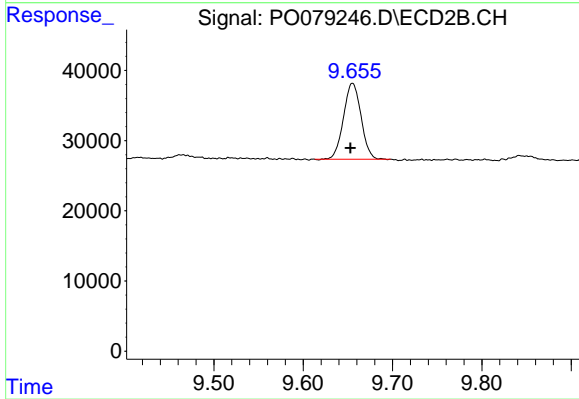
**Manual Integrations**  
**APPROVED**  
 mohammad  
 7/2/2021 11:04:35 AM



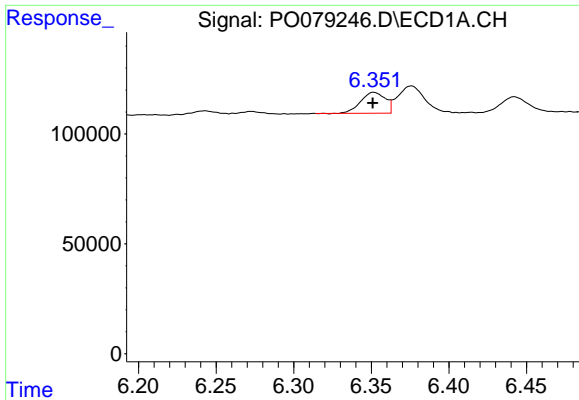
#1 Tetrachloro-m-xylene  
 R.T.: 4.223 min  
 Delta R.T.: 0.000 min  
 Response: 160319  
 Conc: 5.56 ng/ml m



#2 Decachlorobiphenyl  
 R.T.: 11.147 min  
 Delta R.T.: 0.000 min  
 Response: 214583  
 Conc: 5.03 ng/ml



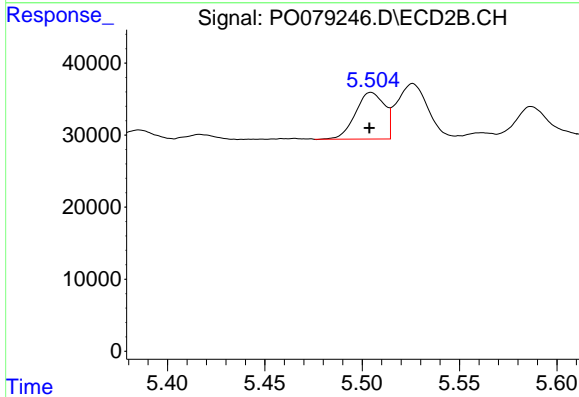
#2 Decachlorobiphenyl  
 R.T.: 9.655 min  
 Delta R.T.: 0.002 min  
 Response: 147648  
 Conc: 5.69 ng/ml



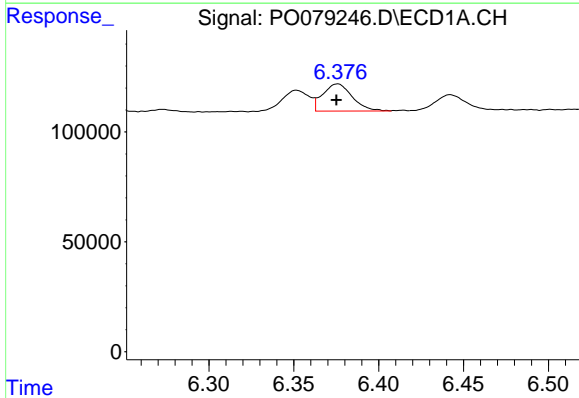
#3 AR-1016-1  
 R.T.: 6.352 min  
 Delta R.T.: 0.000 min  
 Response: 106240  
 Conc: 51.87 ng/ml

**Instrument :**  
 ECD\_O  
**ClientSampleId :**  
 AR1660ICC050

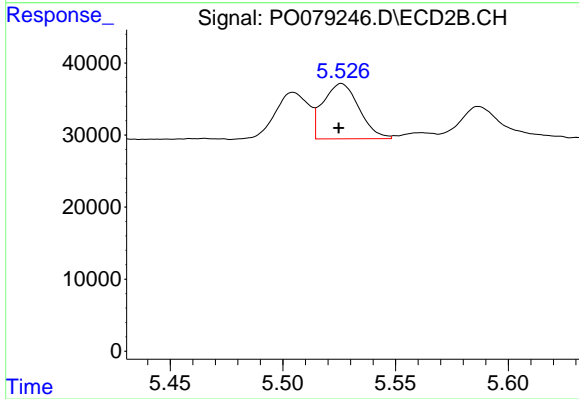
**Manual Integrations**  
**APPROVED**  
 mohammad  
 7/2/2021 11:04:35 AM



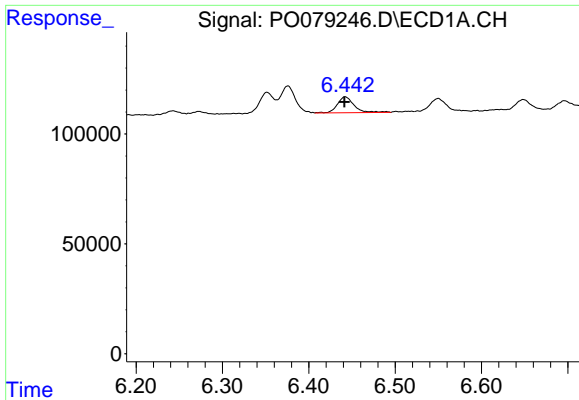
#3 AR-1016-1  
 R.T.: 5.505 min  
 Delta R.T.: 0.000 min  
 Response: 67176  
 Conc: 58.66 ng/ml



#4 AR-1016-2  
 R.T.: 6.376 min  
 Delta R.T.: 0.000 min  
 Response: 149534  
 Conc: 52.19 ng/ml



#4 AR-1016-2  
 R.T.: 5.526 min  
 Delta R.T.: 0.001 min  
 Response: 85423  
 Conc: 56.46 ng/ml

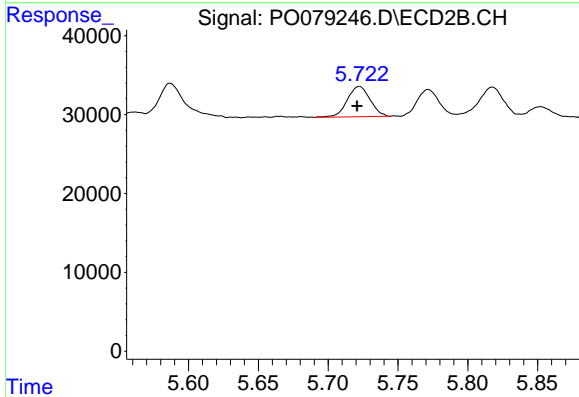


#5 AR-1016-3

R.T.: 6.442 min  
 Delta R.T.: 0.000 min  
 Response: 97829  
 Conc: 57.12 ng/ml

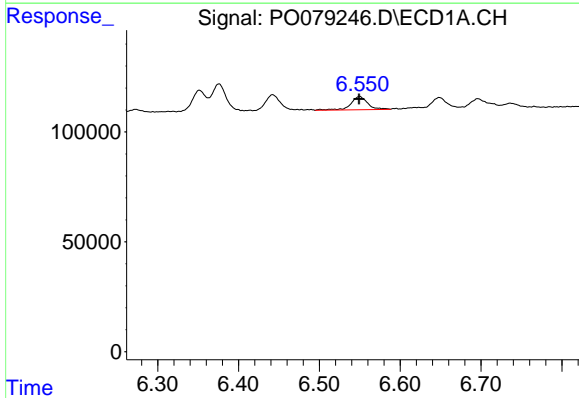
**Instrument :**  
 ECD\_O  
**ClientSampled :**  
 AR1660ICC050

**Manual Integrations**  
**APPROVED**  
 mohammad  
 7/2/2021 11:04:35 AM



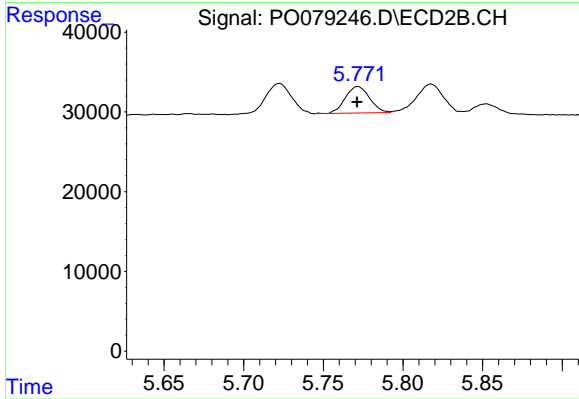
#5 AR-1016-3

R.T.: 5.722 min  
 Delta R.T.: 0.002 min  
 Response: 43611  
 Conc: 53.11 ng/ml



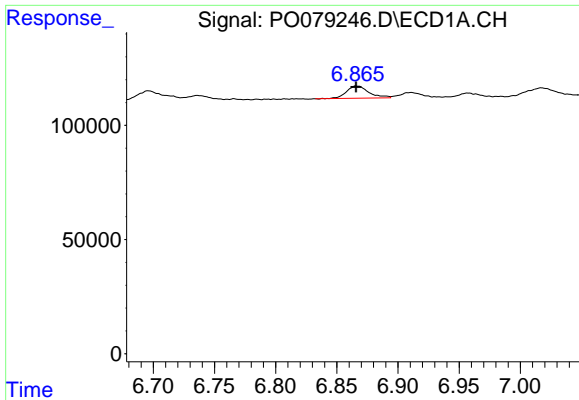
#6 AR-1016-4

R.T.: 6.550 min  
 Delta R.T.: 0.000 min  
 Response: 87949  
 Conc: 62.08 ng/ml



#6 AR-1016-4

R.T.: 5.772 min  
 Delta R.T.: 0.000 min  
 Response: 35246  
 Conc: 52.17 ng/ml

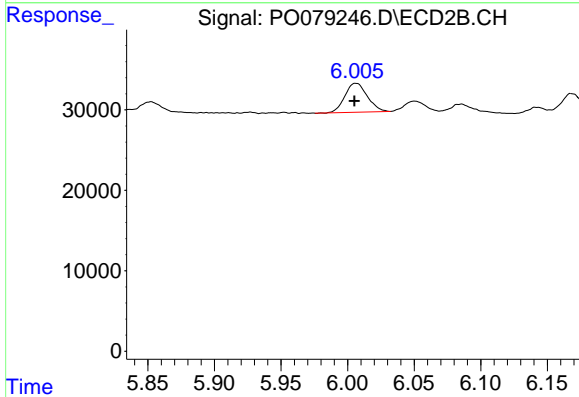


#7 AR-1016-5

R.T.: 6.866 min  
 Delta R.T.: 0.000 min  
 Response: 68373  
 Conc: 51.28 ng/ml

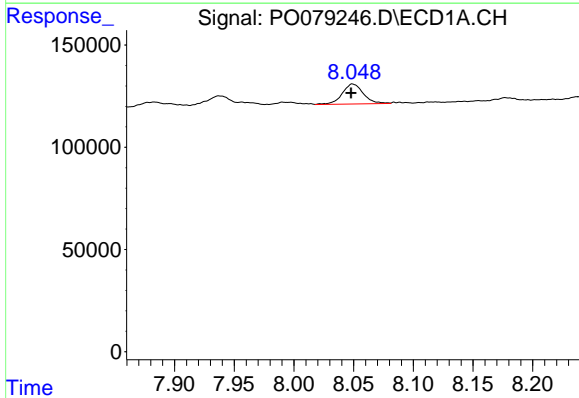
**Instrument :**  
 ECD\_O  
**ClientSampled :**  
 AR1660ICC050

**Manual Integrations**  
**APPROVED**  
 mohammad  
 7/2/2021 11:04:35 AM



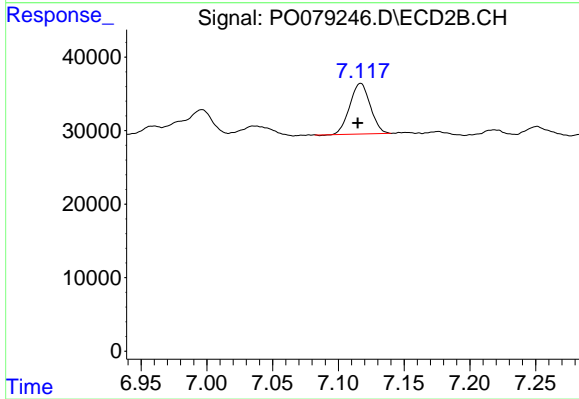
#7 AR-1016-5

R.T.: 6.006 min  
 Delta R.T.: 0.001 min  
 Response: 42180  
 Conc: 49.63 ng/ml



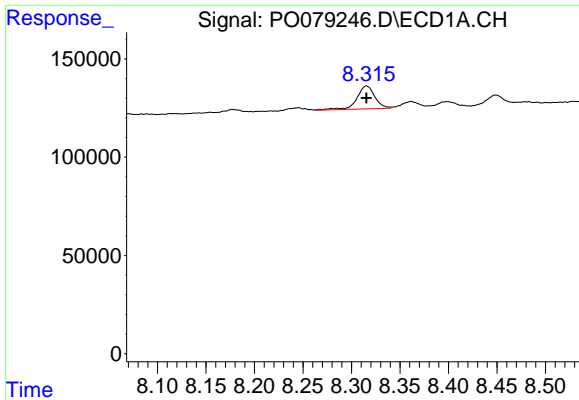
#31 AR-1260-1

R.T.: 8.049 min  
 Delta R.T.: 0.001 min  
 Response: 121120  
 Conc: 53.35 ng/ml



#31 AR-1260-1

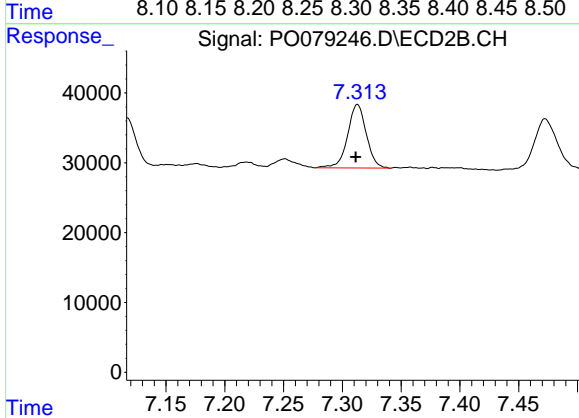
R.T.: 7.117 min  
 Delta R.T.: 0.002 min  
 Response: 74949  
 Conc: 52.75 ng/ml



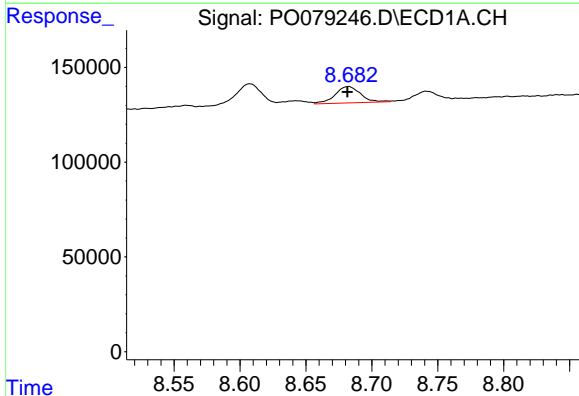
#32 AR-1260-2  
 R.T.: 8.316 min  
 Delta R.T.: 0.000 min  
 Response: 151991  
 Conc: 55.68 ng/ml

**Instrument :**  
 ECD\_O  
**ClientSampled :**  
 AR1660ICC050

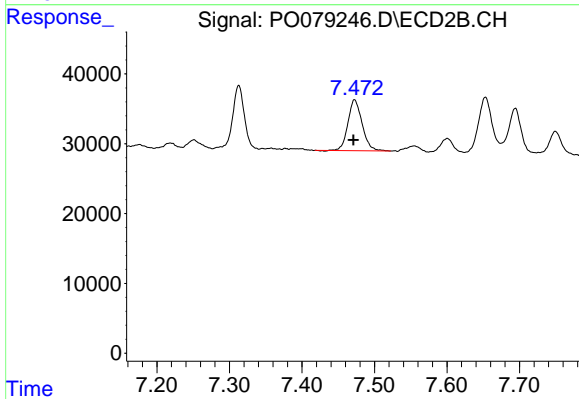
**Manual Integrations**  
**APPROVED**  
 mohammad  
 7/2/2021 11:04:35 AM



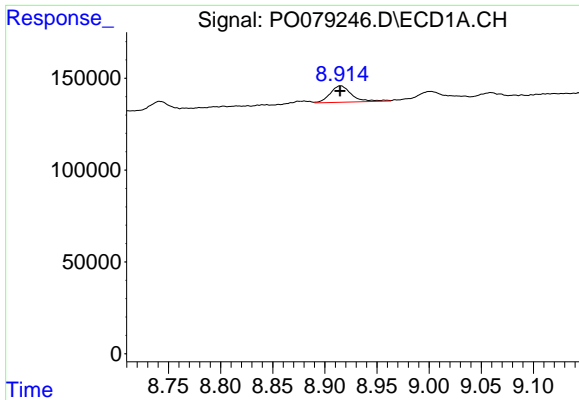
#32 AR-1260-2  
 R.T.: 7.313 min  
 Delta R.T.: 0.002 min  
 Response: 101011  
 Conc: 59.43 ng/ml



#33 AR-1260-3  
 R.T.: 8.682 min  
 Delta R.T.: 0.000 min  
 Response: 115992  
 Conc: 56.84 ng/ml



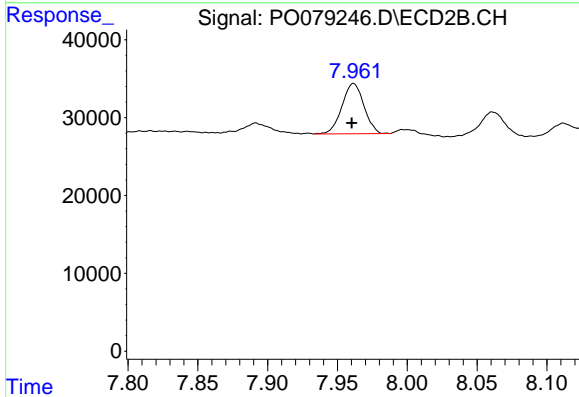
#33 AR-1260-3  
 R.T.: 7.473 min  
 Delta R.T.: 0.001 min  
 Response: 99520  
 Conc: 62.15 ng/ml



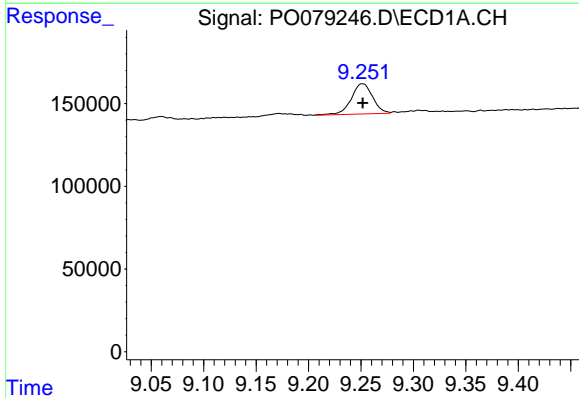
#34 AR-1260-4  
 R.T.: 8.914 min  
 Delta R.T.: 0.000 min  
 Response: 128265  
 Conc: 53.46 ng/ml m

**Instrument :**  
 ECD\_O  
**ClientSampleId :**  
 AR1660ICC050

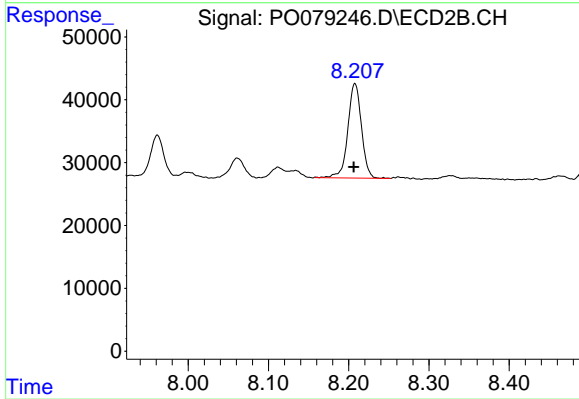
**Manual Integrations**  
**APPROVED**  
 mohammad  
 7/2/2021 11:04:35 AM



#34 AR-1260-4  
 R.T.: 7.962 min  
 Delta R.T.: 0.001 min  
 Response: 70799  
 Conc: 51.62 ng/ml



#35 AR-1260-5  
 R.T.: 9.251 min  
 Delta R.T.: -0.001 min  
 Response: 259735  
 Conc: 52.77 ng/ml m



#35 AR-1260-5  
 R.T.: 8.208 min  
 Delta R.T.: 0.001 min  
 Response: 177832  
 Conc: 53.56 ng/ml