

Data Path : Z:\pestpcbsrv\HPCHEM1\ECD_O\Data\P0070125\
 Data File : PO111917.D
 Signal(s) : Signal #1: ECD1A.ch Signal #2: ECD2B.ch
 Acq On : 01 Jul 2025 10:36
 Operator : YP/AJ
 Sample : AR1268CCC500
 Misc :
 ALS Vial : 7 Sample Multiplier: 1

Instrument :
 ECD_O
 ClientSampleId :

Integration File signal 1: autoint1.e
 Integration File signal 2: autoint2.e
 Quant Time: Jul 01 11:23:20 2025
 Quant Method : Z:\pestpcbsrv\HPCHEM1\ECD_O\methods\P0061125.M
 Quant Title : GC EXTRACTABLES
 QLast Update : Thu Jun 12 06:25:26 2025
 Response via : Initial Calibration
 Integrator: ChemStation

Volume Inj. : 2 µl
 Signal #1 Phase : ZB-MR1 Signal #2 Phase: ZB-MR2
 Signal #1 Info : 30Mx0.32mmx 0.50µ Signal #2 Info : 30M x 0.32mm x 0.25µm

Compound	RT#1	RT#2	Resp#1	Resp#2	ng/ml	ng/ml
System Monitoring Compounds						
1) SA Tetrachlo...	3.675	3.672	305.5E6	283.6E6	53.051	50.494
2) SA Decachlor...	8.707	8.656	422.2E6	152.2E6	80.433	85.597
Target Compounds						
3) L1 AR-1016-1	4.764	4.748	1459475	2039327	6.118	10.364 #
4) L1 AR-1016-2	4.782	4.766	1419891	2430491	4.267	8.532 #
5) L1 AR-1016-3	4.841	4.941	1421908	612406	6.178	4.076 #
6) L1 AR-1016-4	4.956	4.985	917342	1204167	4.946	9.887 #
7) L1 AR-1016-5	5.213	5.195	1700566	1575681	9.111	9.898
8) L2 AR-1221-1	3.892	3.891	331525	301218	3.807	4.034
9) L2 AR-1221-2	3.976	3.970	5639076	4329914	87.880	77.391
10) L2 AR-1221-3	4.048	4.046	502011	294739	2.574	1.715 #
11) L3 AR-1232-1	4.048	4.046	502011	294739	3.308	2.216 #
12) L3 AR-1232-2	4.536	4.766	738213	2430491	8.562	18.442 #
13) L3 AR-1232-3	4.782	4.941	1419891	612406	8.717	8.860
14) L3 AR-1232-4	4.956	5.025	917342	773429	10.542	12.787
15) L3 AR-1232-5	4.999	5.195	1704990	1575681	30.134	23.725
16) L4 AR-1242-1	4.764	4.748	1459475	2039327	7.245	12.530 #
17) L4 AR-1242-2	4.782	4.766	1419891	2430491	5.039	10.296 #
18) L4 AR-1242-3	4.841	4.941	1421908	612406	7.152	4.876 #
19) L4 AR-1242-4	4.956	5.025	917342	773429	5.799	6.311
20) L4 AR-1242-5	5.612	5.545	3202103	2551117	19.149	17.020
21) L5 AR-1248-1	4.764	4.748	1459475	2039327	9.050	15.301 #
22) L5 AR-1248-2	4.999	4.985	1704990	1204167	7.908	6.759
23) L5 AR-1248-3	5.213	5.025	1700566	773429	6.304	4.083 #
24) L5 AR-1248-4	5.569	5.195	4580595	1575681	11.457	6.901 #
25) L5 AR-1248-5	5.612	5.588	3202103	2570272	11.403	11.803
26) L6 AR-1254-1	5.569	5.545	4580595	2551117	10.776	7.898 #
27) L6 AR-1254-2	5.714	5.695	2679918	1070057	7.061	3.831 #
28) L6 AR-1254-3	6.125	6.097	2225180	1984310	3.895	4.735
29) L6 AR-1254-4	6.351	6.321	2441891	1224606	6.999	5.376
30) L6 AR-1254-5	6.763	6.736	1952230	308536	3.812	0.948 #
31) L7 AR-1260-1	6.264	6.228	1740262	684599	4.898	2.728 #
32) L7 AR-1260-2	6.443	6.414	3068597	1383770	6.495	4.706 #
33) L7 AR-1260-3	6.809	6.570	129.1E6	5721645	304.047	21.415 #
34) L7 AR-1260-4	7.066	7.033	150.3E6	78057789	477.857	410.622
35) L7 AR-1260-5	7.312	7.276	61530422	29467657	74.698	69.332
36) L8 AR-1262-1	6.809	6.778	129.1E6	68068147	211.716	201.586
37) L8 AR-1262-2	7.312	7.276	61530422	29467657	65.360	63.266
38) L8 AR-1262-3	7.595	7.559	603.2E6	221.2E6	1520.885	1330.436
39) L8 AR-1262-4	7.661	7.624	507.5E6	192.8E6	772.383	695.914
40) L8 AR-1262-5	8.155	8.115	163.1E6	54478216	535.328	536.101
41) L9 AR-1268-1	7.595	7.559	603.2E6	221.2E6	535.445	462.436

Data Path : Z:\pestpcbsrv\HPCHEM1\ECD_0\Data\P0070125\
 Data File : P0111917.D
 Signal(s) : Signal #1: ECD1A.ch Signal #2: ECD2B.ch
 Acq On : 01 Jul 2025 10:36
 Operator : YP/AJ
 Sample : AR1268CCC500
 Misc :
 ALS Vial : 7 Sample Multiplier: 1

Instrument :
 ECD_0
 ClientSampleId :

Integration File signal 1: autoint1.e
 Integration File signal 2: autoint2.e
 Quant Time: Jul 01 11:23:20 2025
 Quant Method : Z:\pestpcbsrv\HPCHEM1\ECD_0\methods\P0061125.M
 Quant Title : GC EXTRACTABLES
 QLast Update : Thu Jun 12 06:25:26 2025
 Response via : Initial Calibration
 Integrator: ChemStation

Volume Inj. : 2 µl
 Signal #1 Phase : ZB-MR1 Signal #2 Phase: ZB-MR2
 Signal #1 Info : 30Mx0.32mmx 0.50µ Signal #2 Info : 30M x 0.32mm x 0.25µm

	Compound	RT#1	RT#2	Resp#1	Resp#2	ng/ml	ng/ml
42)	L9 AR-1268-2	7.661	7.624	507.5E6	192.8E6	519.282	462.943
43)	L9 AR-1268-3	7.866	7.829	417.9E6	145.2E6	509.907	458.232
44)	L9 AR-1268-4	8.155	8.115	163.1E6	54478216	474.143	471.032
45)	L9 AR-1268-5	8.451	8.405	1030.0E6	332.0E6	463.864	458.209

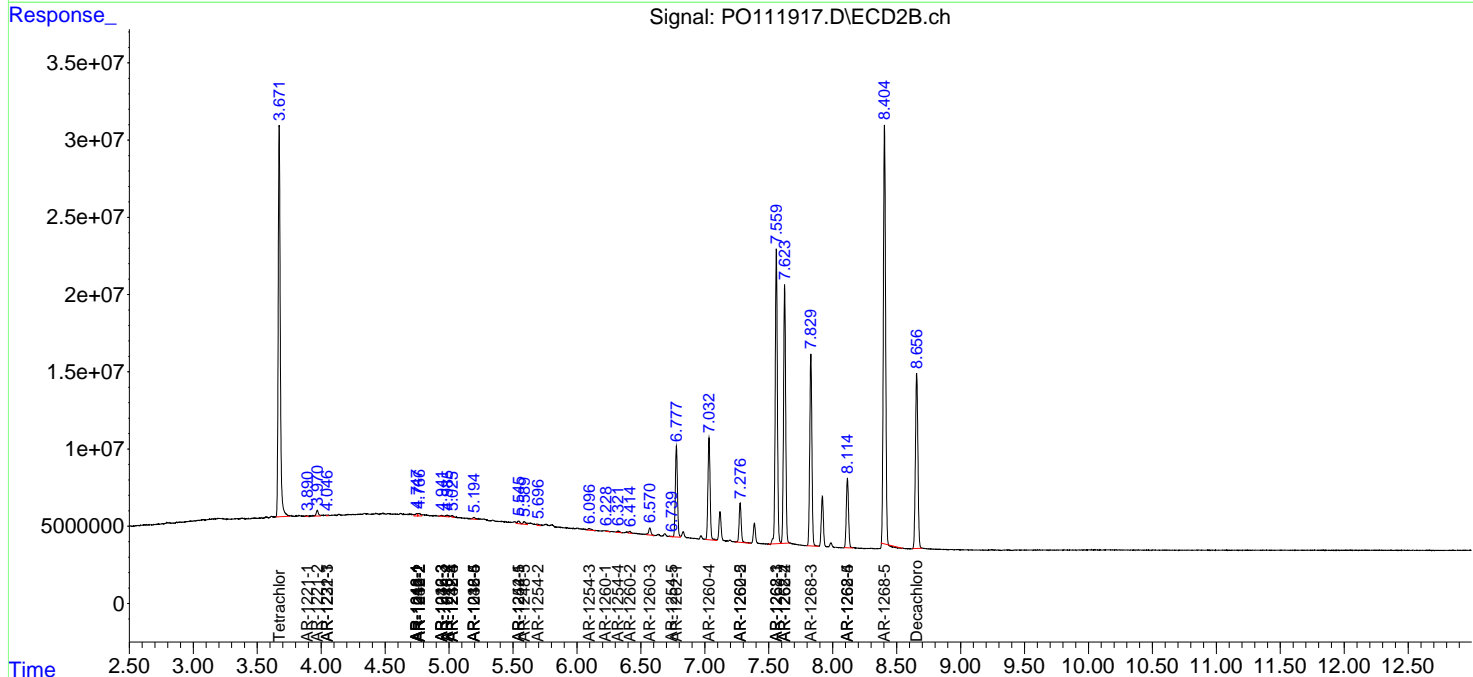
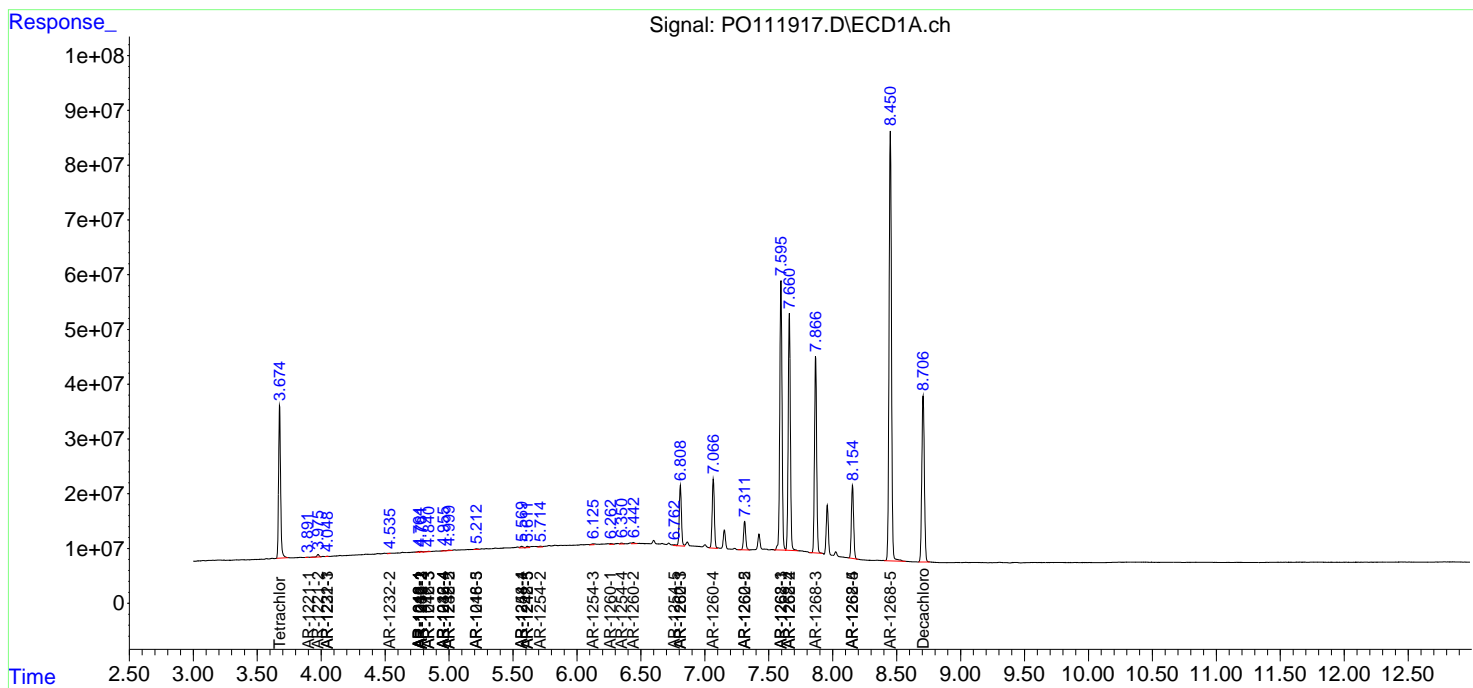
(f)=RT Delta > 1/2 Window (#)=Amounts differ by > 25% (m)=manual int.

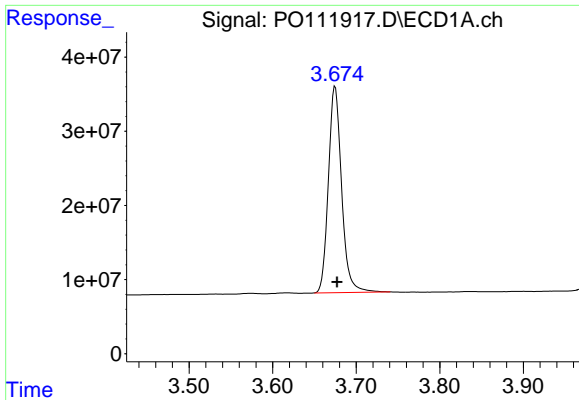
Data Path : Z:\pestpcbsrv\HPCHEM1\ECD_O\Data\PO070125\
 Data File : PO111917.D
 Signal(s) : Signal #1: ECD1A.ch Signal #2: ECD2B.ch
 Acq On : 01 Jul 2025 10:36
 Operator : YP/AJ
 Sample : AR1268CCC500
 Misc :
 ALS Vial : 7 Sample Multiplier: 1

Instrument :
 ECD_O
 ClientSampleId :

Integration File signal 1: autoint1.e
 Integration File signal 2: autoint2.e
 Quant Time: Jul 01 11:23:20 2025
 Quant Method : Z:\pestpcbsrv\HPCHEM1\ECD_O\methods\PO061125.M
 Quant Title : GC EXTRACTABLES
 QLast Update : Thu Jun 12 06:25:26 2025
 Response via : Initial Calibration
 Integrator: ChemStation

Volume Inj. : 2 µl
 Signal #1 Phase : ZB-MR1 Signal #2 Phase: ZB-MR2
 Signal #1 Info : 30Mx0.32mmx 0.50µ Signal #2 Info : 30M x 0.32mm x 0.25µm

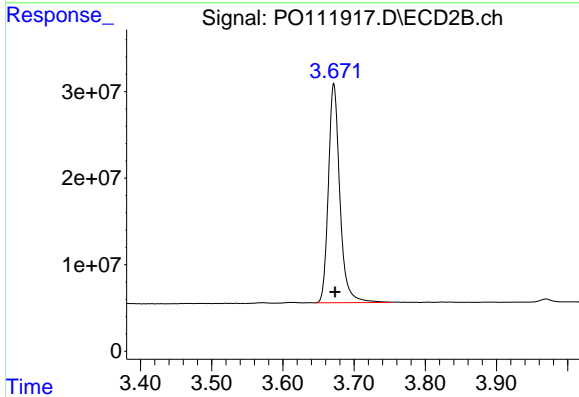




#1 Tetrachloro-m-xylene

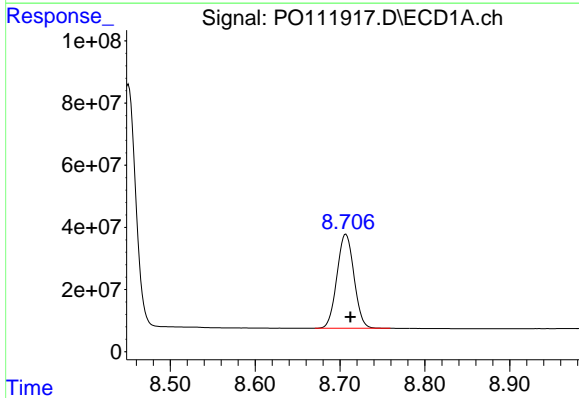
R.T.: 3.675 min
 Delta R.T.: -0.002 min
 Response: 305544488
 Conc: 53.05 ng/ml

Instrument :
 ECD_O
 ClientSampleId :



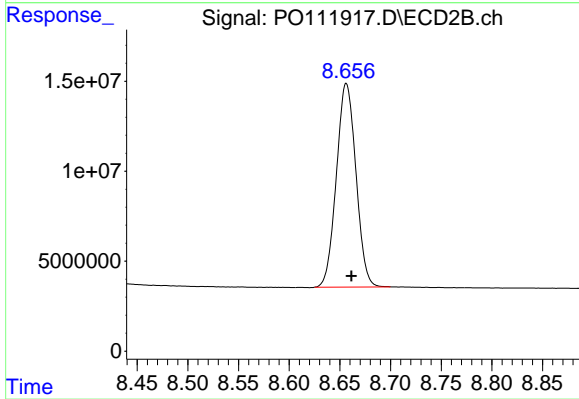
#1 Tetrachloro-m-xylene

R.T.: 3.672 min
 Delta R.T.: -0.002 min
 Response: 283639556
 Conc: 50.49 ng/ml



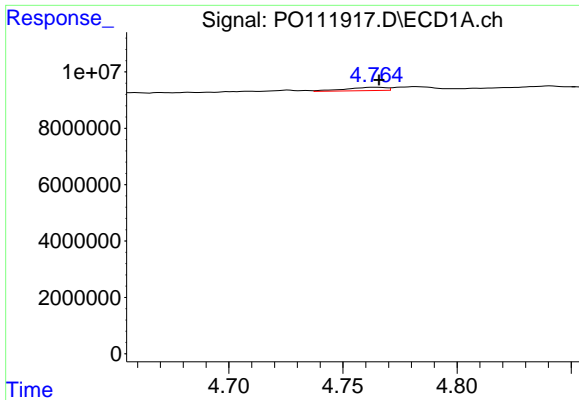
#2 Decachlorobiphenyl

R.T.: 8.707 min
 Delta R.T.: -0.005 min
 Response: 422210116
 Conc: 80.43 ng/ml



#2 Decachlorobiphenyl

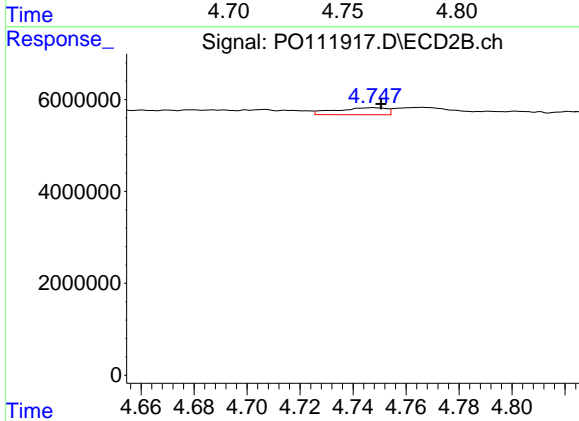
R.T.: 8.656 min
 Delta R.T.: -0.005 min
 Response: 152162047
 Conc: 85.60 ng/ml



#3 AR-1016-1

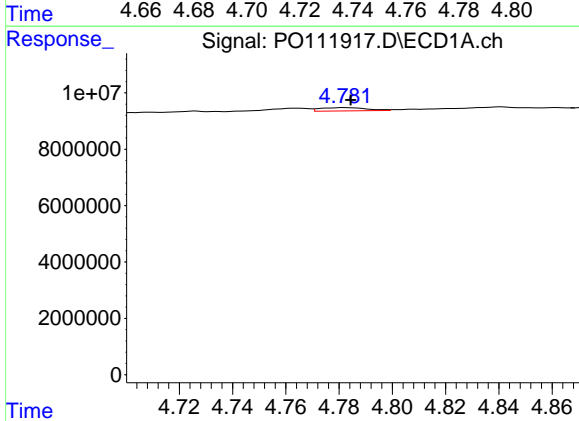
R.T.: 4.764 min
 Delta R.T.: -0.001 min
 Response: 1459475
 Conc: 6.12 ng/ml

Instrument :
 ECD_O
 ClientSampleId :



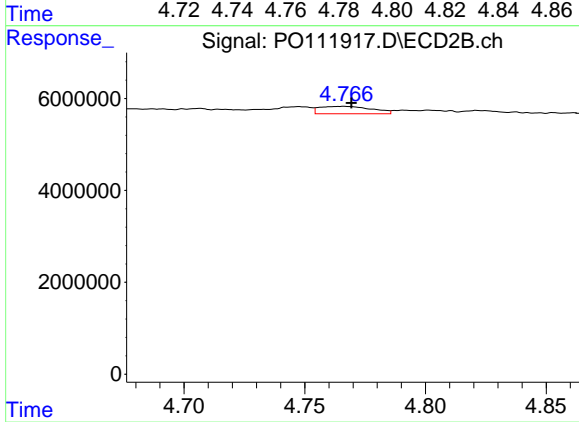
#3 AR-1016-1

R.T.: 4.748 min
 Delta R.T.: -0.003 min
 Response: 2039327
 Conc: 10.36 ng/ml



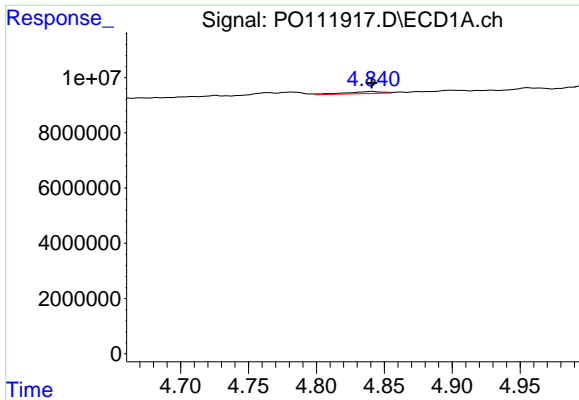
#4 AR-1016-2

R.T.: 4.782 min
 Delta R.T.: -0.002 min
 Response: 1419891
 Conc: 4.27 ng/ml



#4 AR-1016-2

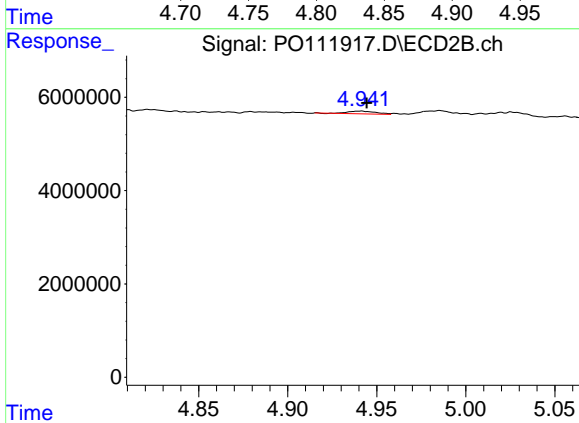
R.T.: 4.766 min
 Delta R.T.: -0.003 min
 Response: 2430491
 Conc: 8.53 ng/ml



#5 AR-1016-3

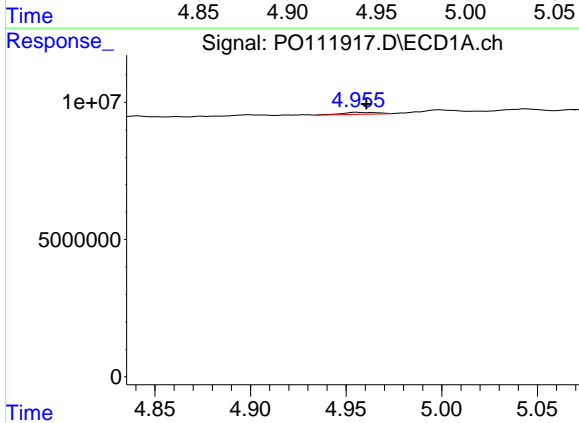
R.T.: 4.841 min
 Delta R.T.: 0.000 min
 Response: 1421908
 Conc: 6.18 ng/ml

Instrument :
 ECD_O
 ClientSampleId :



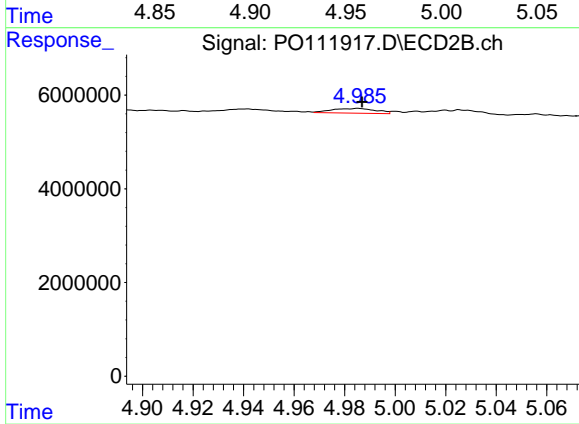
#5 AR-1016-3

R.T.: 4.941 min
 Delta R.T.: -0.003 min
 Response: 612406
 Conc: 4.08 ng/ml



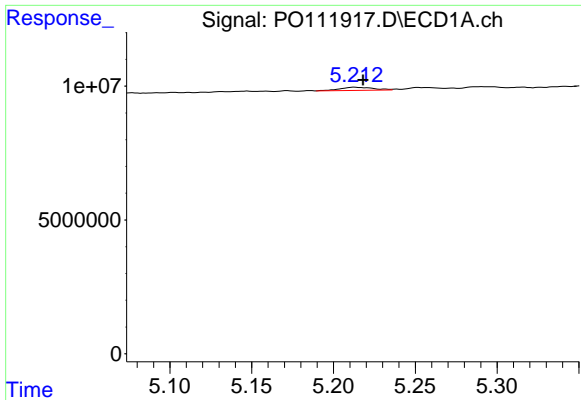
#6 AR-1016-4

R.T.: 4.956 min
 Delta R.T.: -0.005 min
 Response: 917342
 Conc: 4.95 ng/ml



#6 AR-1016-4

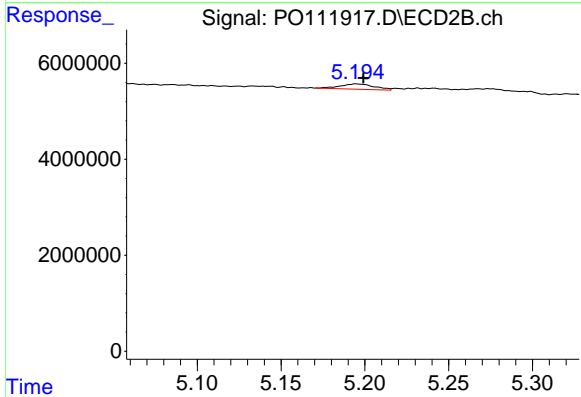
R.T.: 4.985 min
 Delta R.T.: -0.001 min
 Response: 1204167
 Conc: 9.89 ng/ml



#7 AR-1016-5

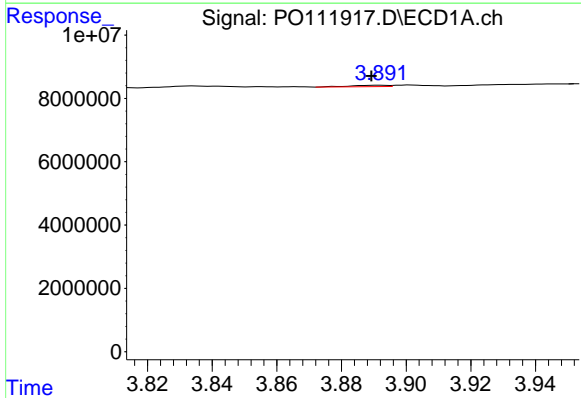
R.T.: 5.213 min
 Delta R.T.: -0.005 min
 Response: 1700566
 Conc: 9.11 ng/ml

Instrument :
 ECD_O
 ClientSampleId :



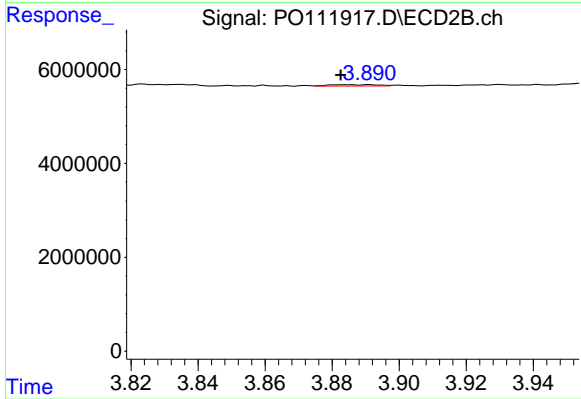
#7 AR-1016-5

R.T.: 5.195 min
 Delta R.T.: -0.004 min
 Response: 1575681
 Conc: 9.90 ng/ml



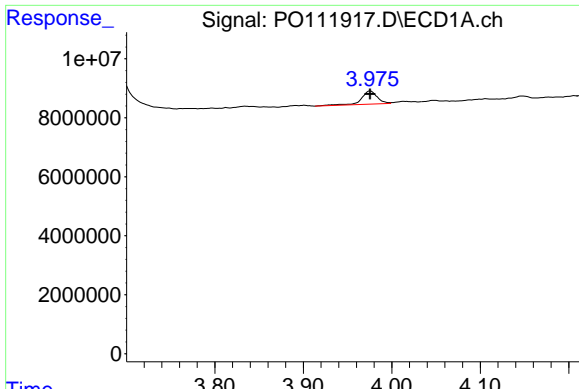
#8 AR-1221-1

R.T.: 3.892 min
 Delta R.T.: 0.003 min
 Response: 331525
 Conc: 3.81 ng/ml



#8 AR-1221-1

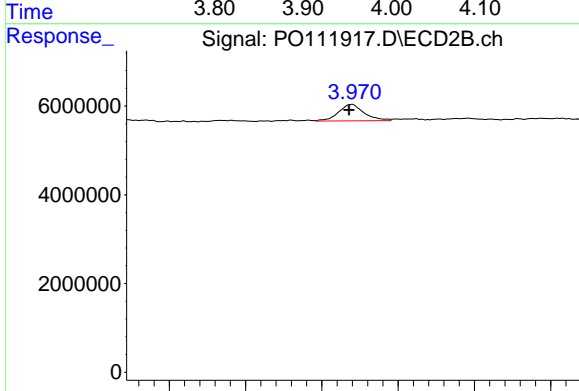
R.T.: 3.891 min
 Delta R.T.: 0.008 min
 Response: 301218
 Conc: 4.03 ng/ml



#9 AR-1221-2

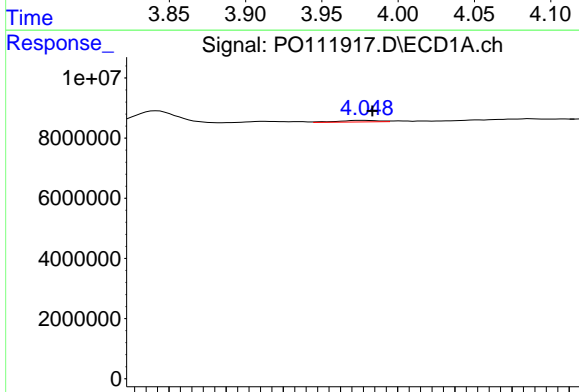
R.T.: 3.976 min
 Delta R.T.: 0.000 min
 Response: 5639076
 Conc: 87.88 ng/ml

Instrument :
 ECD_O
 ClientSampleId :



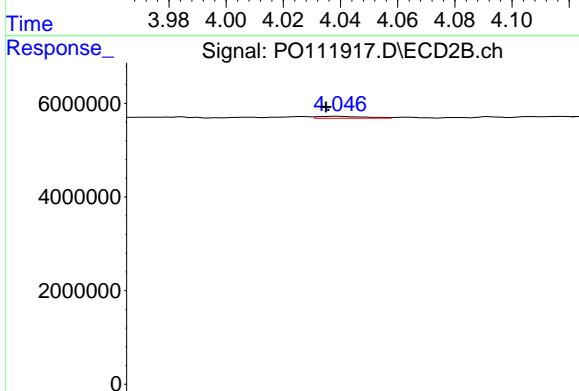
#9 AR-1221-2

R.T.: 3.970 min
 Delta R.T.: 0.002 min
 Response: 4329914
 Conc: 77.39 ng/ml



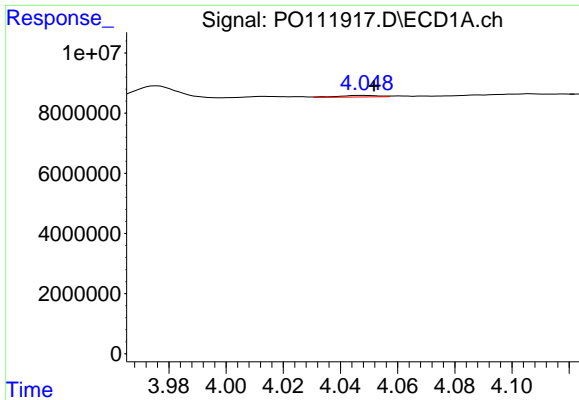
#10 AR-1221-3

R.T.: 4.048 min
 Delta R.T.: -0.003 min
 Response: 502011
 Conc: 2.57 ng/ml



#10 AR-1221-3

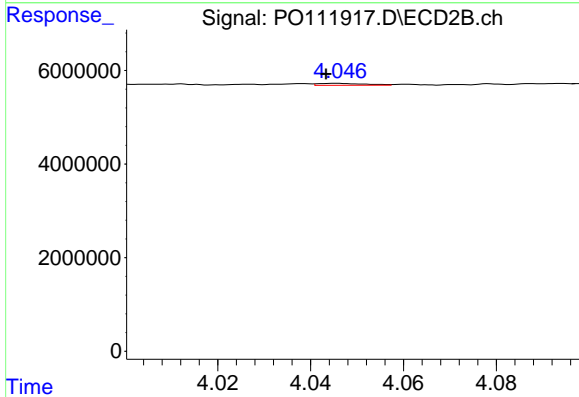
R.T.: 4.046 min
 Delta R.T.: 0.002 min
 Response: 294739
 Conc: 1.72 ng/ml



#11 AR-1232-1

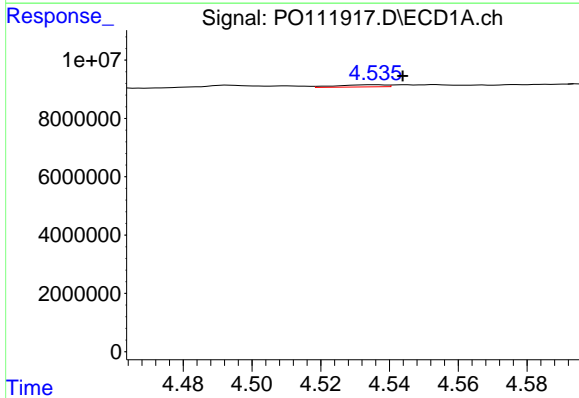
R.T.: 4.048 min
 Delta R.T.: -0.003 min
 Response: 502011
 Conc: 3.31 ng/ml

Instrument :
 ECD_O
 ClientSampleId :



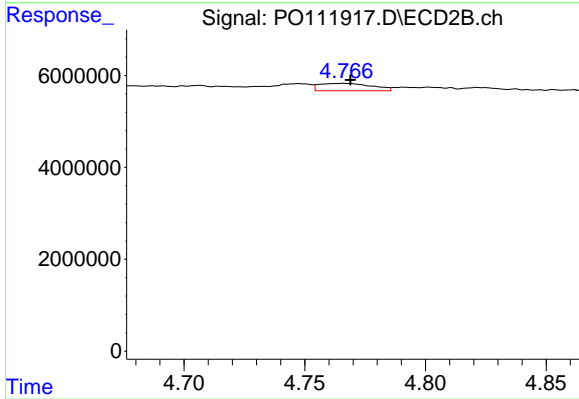
#11 AR-1232-1

R.T.: 4.046 min
 Delta R.T.: 0.002 min
 Response: 294739
 Conc: 2.22 ng/ml



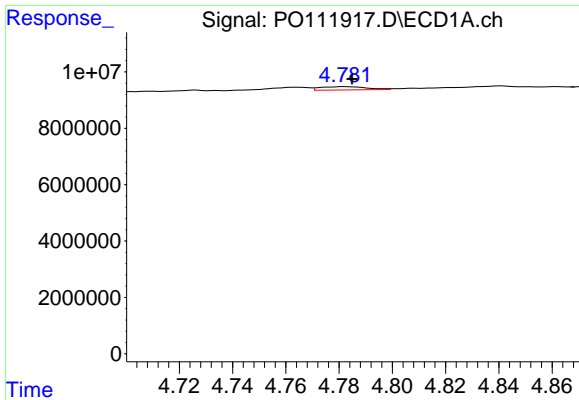
#12 AR-1232-2

R.T.: 4.536 min
 Delta R.T.: -0.008 min
 Response: 738213
 Conc: 8.56 ng/ml



#12 AR-1232-2

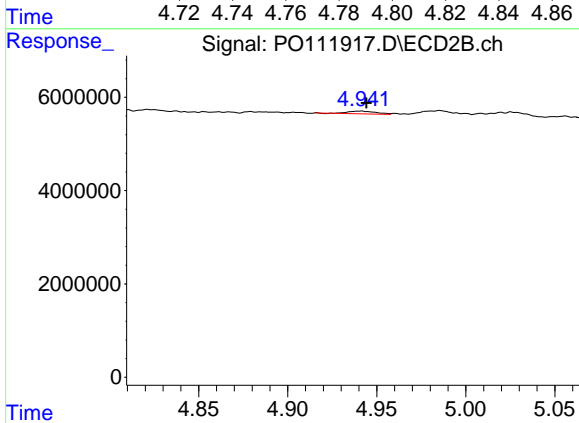
R.T.: 4.766 min
 Delta R.T.: -0.003 min
 Response: 2430491
 Conc: 18.44 ng/ml



#13 AR-1232-3

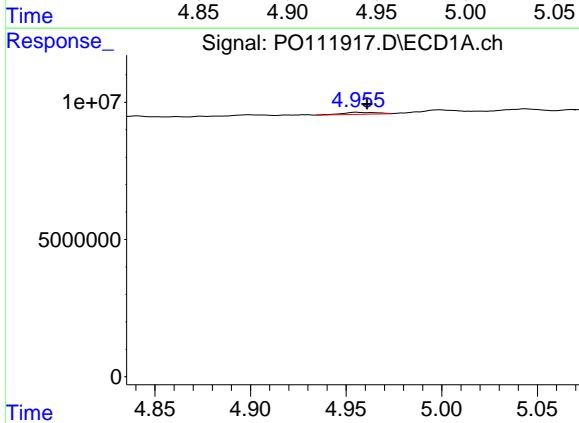
R.T.: 4.782 min
 Delta R.T.: -0.003 min
 Response: 1419891
 Conc: 8.72 ng/ml

Instrument :
 ECD_O
 ClientSampleId :



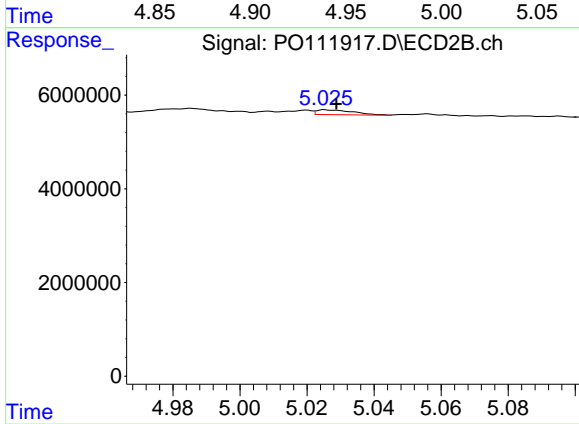
#13 AR-1232-3

R.T.: 4.941 min
 Delta R.T.: -0.003 min
 Response: 612406
 Conc: 8.86 ng/ml



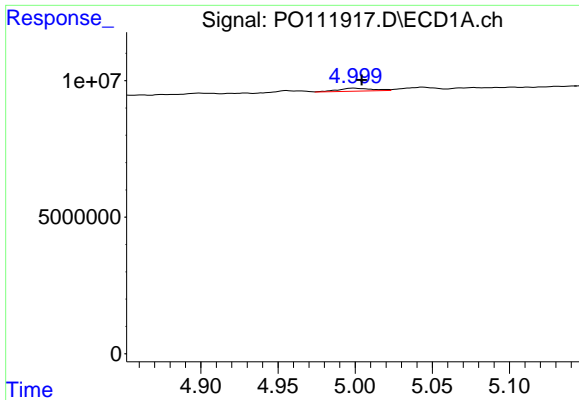
#14 AR-1232-4

R.T.: 4.956 min
 Delta R.T.: -0.005 min
 Response: 917342
 Conc: 10.54 ng/ml



#14 AR-1232-4

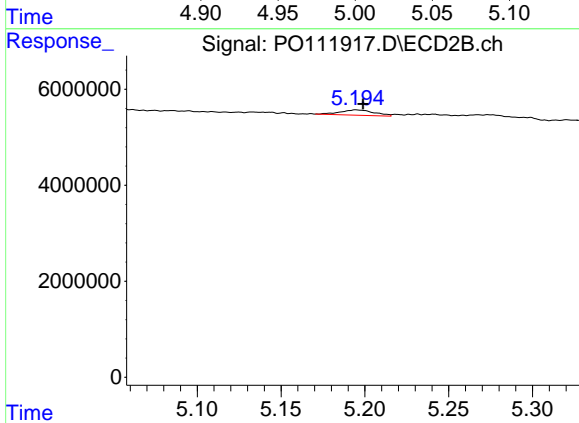
R.T.: 5.025 min
 Delta R.T.: -0.003 min
 Response: 773429
 Conc: 12.79 ng/ml



#15 AR-1232-5

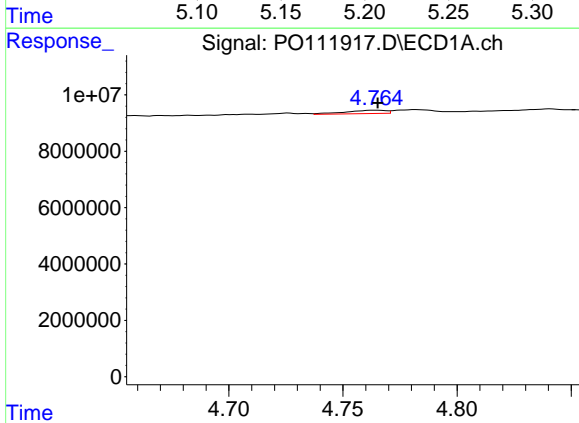
R.T.: 4.999 min
 Delta R.T.: -0.005 min
 Response: 1704990
 Conc: 30.13 ng/ml

Instrument :
 ECD_O
 ClientSampleId :



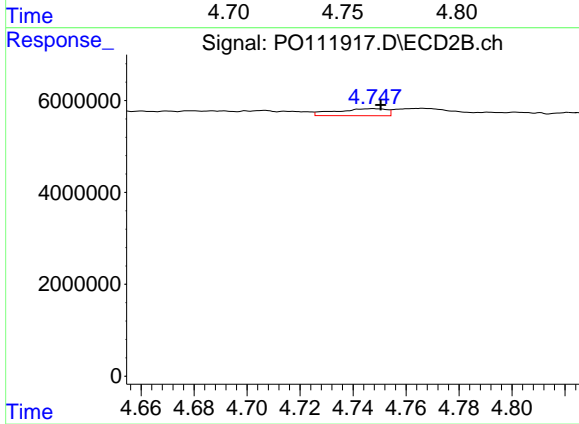
#15 AR-1232-5

R.T.: 5.195 min
 Delta R.T.: -0.004 min
 Response: 1575681
 Conc: 23.72 ng/ml



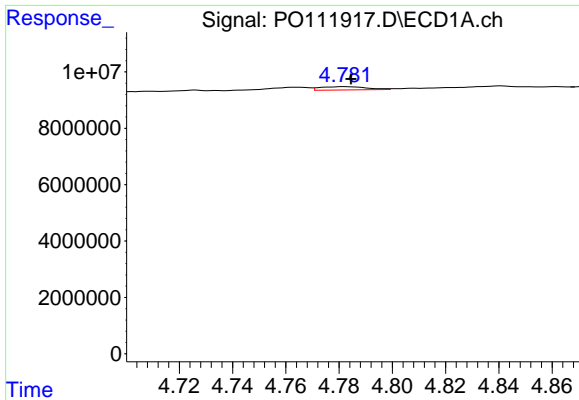
#16 AR-1242-1

R.T.: 4.764 min
 Delta R.T.: 0.000 min
 Response: 1459475
 Conc: 7.25 ng/ml



#16 AR-1242-1

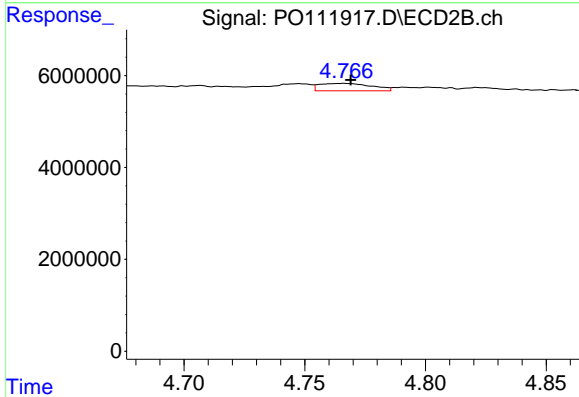
R.T.: 4.748 min
 Delta R.T.: -0.003 min
 Response: 2039327
 Conc: 12.53 ng/ml



#17 AR-1242-2

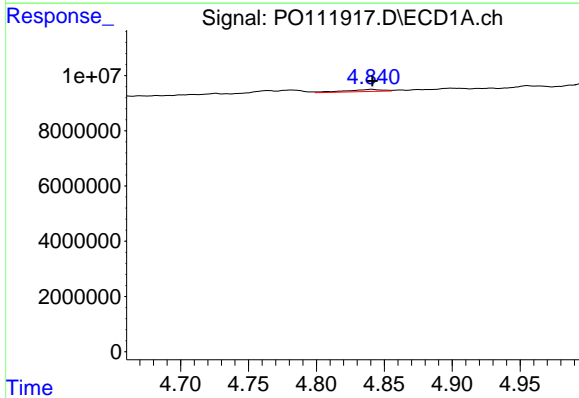
R.T.: 4.782 min
 Delta R.T.: -0.002 min
 Response: 1419891
 Conc: 5.04 ng/ml

Instrument :
 ECD_O
 ClientSampleId :



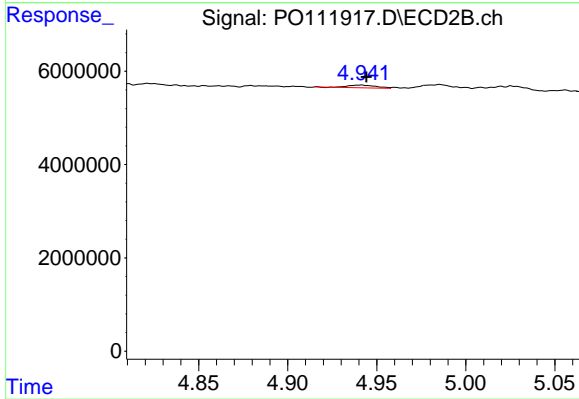
#17 AR-1242-2

R.T.: 4.766 min
 Delta R.T.: -0.003 min
 Response: 2430491
 Conc: 10.30 ng/ml



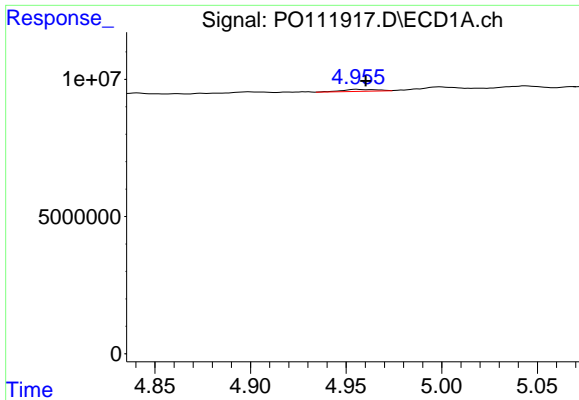
#18 AR-1242-3

R.T.: 4.841 min
 Delta R.T.: 0.000 min
 Response: 1421908
 Conc: 7.15 ng/ml



#18 AR-1242-3

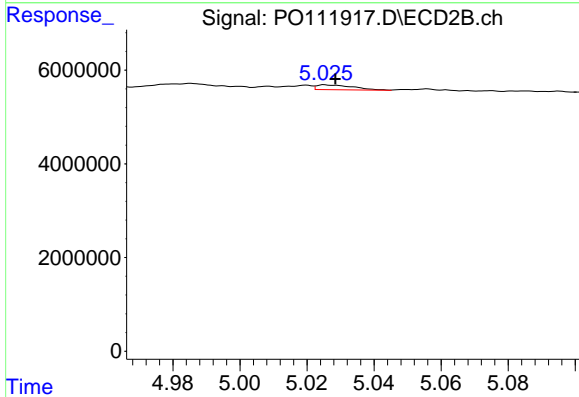
R.T.: 4.941 min
 Delta R.T.: -0.003 min
 Response: 612406
 Conc: 4.88 ng/ml



#19 AR-1242-4

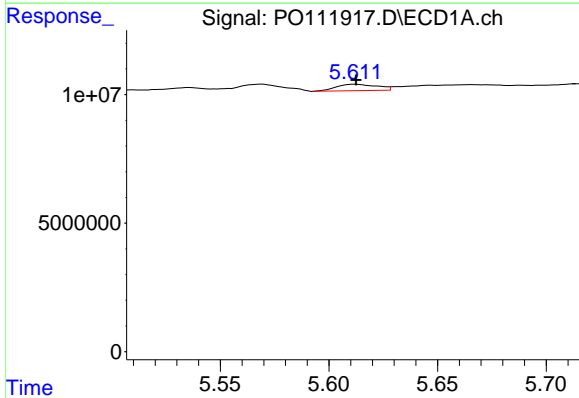
R.T.: 4.956 min
 Delta R.T.: -0.005 min
 Response: 917342
 Conc: 5.80 ng/ml

Instrument :
 ECD_O
 ClientSampleId :



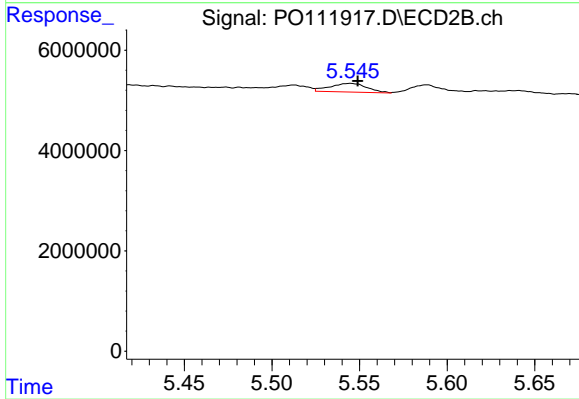
#19 AR-1242-4

R.T.: 5.025 min
 Delta R.T.: -0.003 min
 Response: 773429
 Conc: 6.31 ng/ml



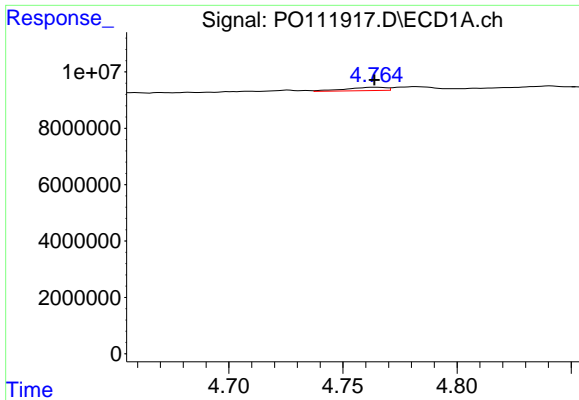
#20 AR-1242-5

R.T.: 5.612 min
 Delta R.T.: 0.000 min
 Response: 3202103
 Conc: 19.15 ng/ml



#20 AR-1242-5

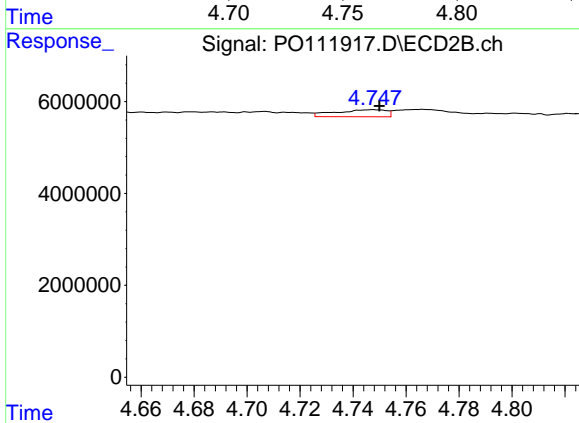
R.T.: 5.545 min
 Delta R.T.: -0.004 min
 Response: 2551117
 Conc: 17.02 ng/ml



#21 AR-1248-1

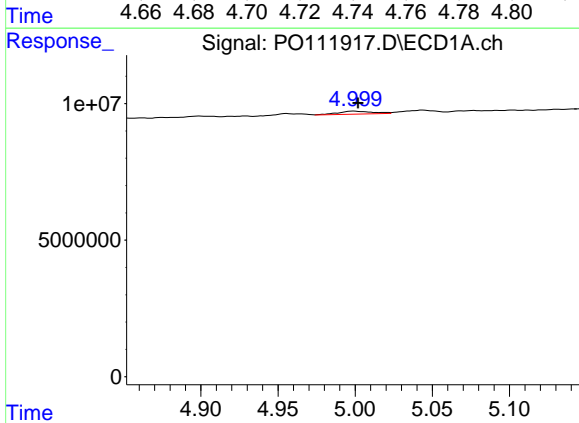
R.T.: 4.764 min
 Delta R.T.: 0.000 min
 Response: 1459475
 Conc: 9.05 ng/ml

Instrument :
 ECD_O
 ClientSampleId :



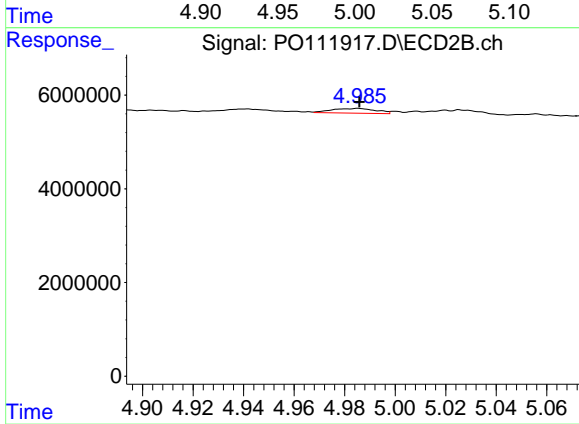
#21 AR-1248-1

R.T.: 4.748 min
 Delta R.T.: -0.002 min
 Response: 2039327
 Conc: 15.30 ng/ml



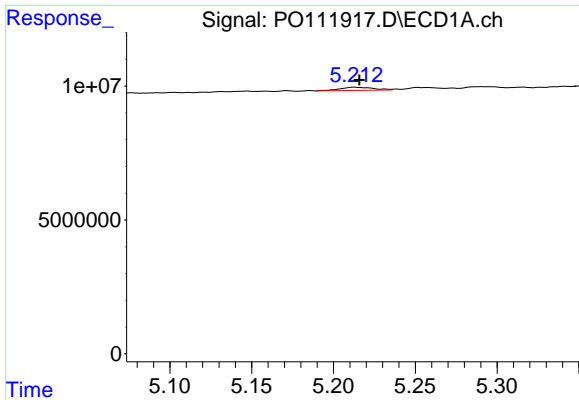
#22 AR-1248-2

R.T.: 4.999 min
 Delta R.T.: -0.003 min
 Response: 1704990
 Conc: 7.91 ng/ml



#22 AR-1248-2

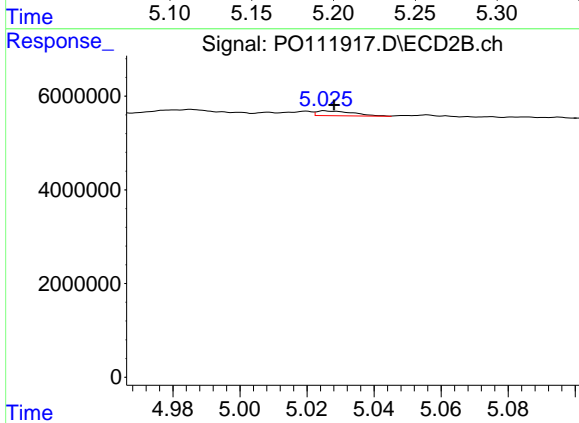
R.T.: 4.985 min
 Delta R.T.: 0.000 min
 Response: 1204167
 Conc: 6.76 ng/ml



#23 AR-1248-3

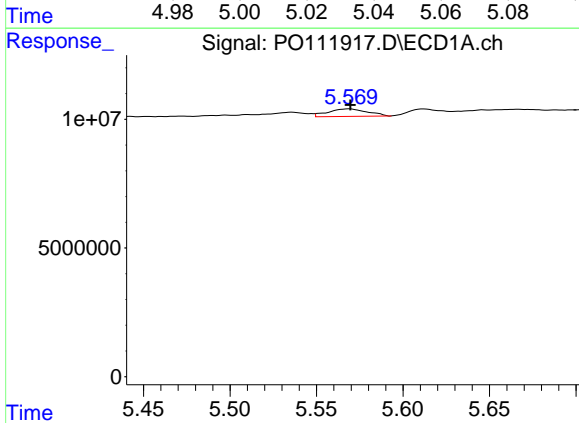
R.T.: 5.213 min
 Delta R.T.: -0.003 min
 Response: 1700566
 Conc: 6.30 ng/ml

Instrument :
 ECD_O
 ClientSampleId :



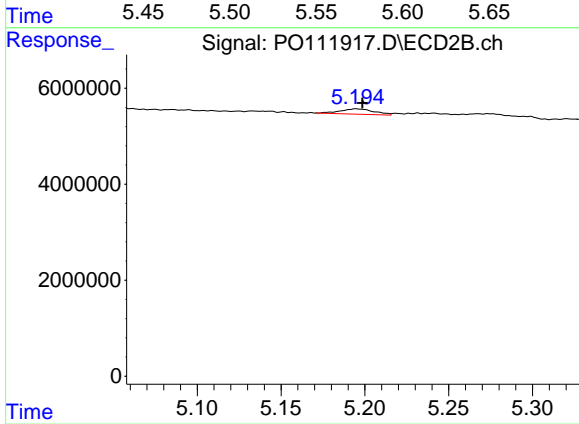
#23 AR-1248-3

R.T.: 5.025 min
 Delta R.T.: -0.003 min
 Response: 773429
 Conc: 4.08 ng/ml



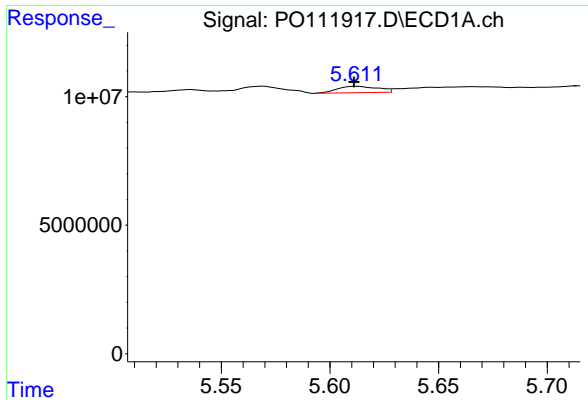
#24 AR-1248-4

R.T.: 5.569 min
 Delta R.T.: 0.000 min
 Response: 4580595
 Conc: 11.46 ng/ml



#24 AR-1248-4

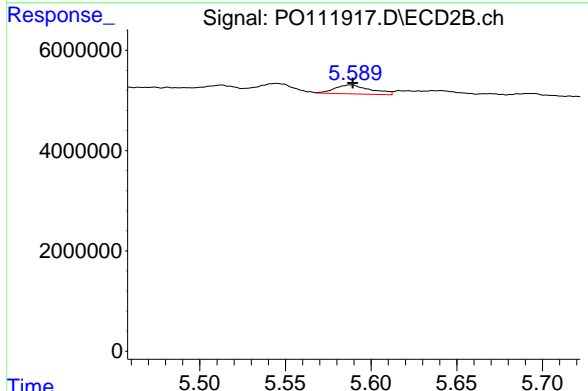
R.T.: 5.195 min
 Delta R.T.: -0.004 min
 Response: 1575681
 Conc: 6.90 ng/ml



#25 AR-1248-5

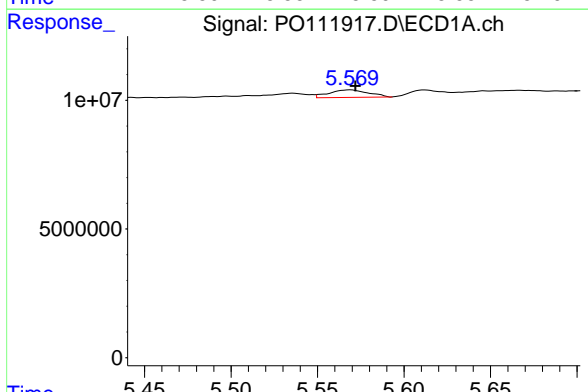
R.T.: 5.612 min
 Delta R.T.: 0.000 min
 Response: 3202103
 Conc: 11.40 ng/ml

Instrument :
 ECD_O
 ClientSampleId :



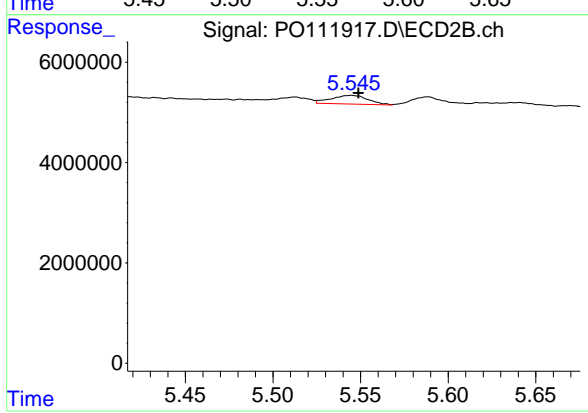
#25 AR-1248-5

R.T.: 5.588 min
 Delta R.T.: 0.000 min
 Response: 2570272
 Conc: 11.80 ng/ml



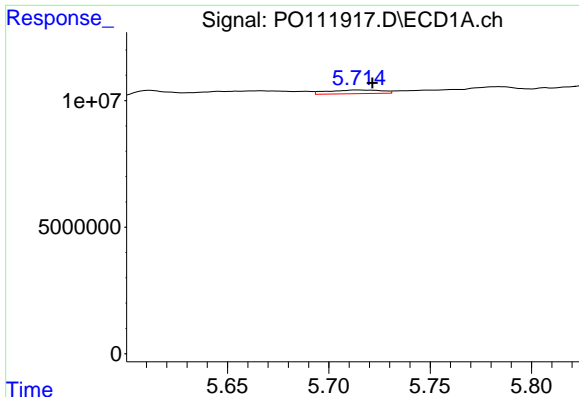
#26 AR-1254-1

R.T.: 5.569 min
 Delta R.T.: -0.003 min
 Response: 4580595
 Conc: 10.78 ng/ml



#26 AR-1254-1

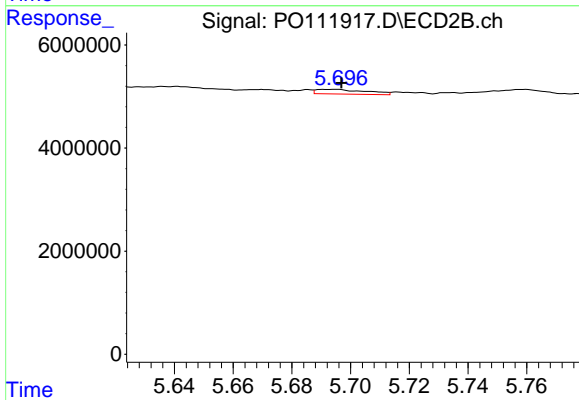
R.T.: 5.545 min
 Delta R.T.: -0.004 min
 Response: 2551117
 Conc: 7.90 ng/ml



#27 AR-1254-2

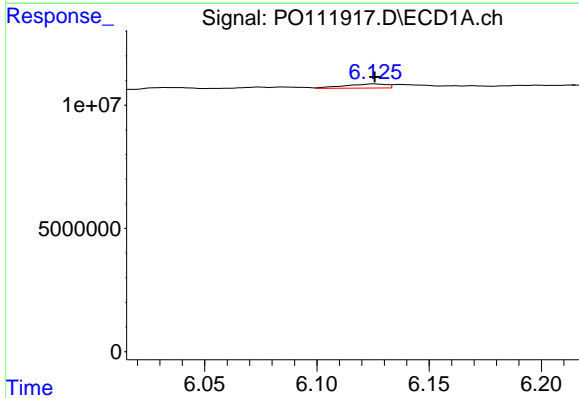
R.T.: 5.714 min
 Delta R.T.: -0.007 min
 Response: 2679918
 Conc: 7.06 ng/ml

Instrument :
 ECD_O
 ClientSampleId :



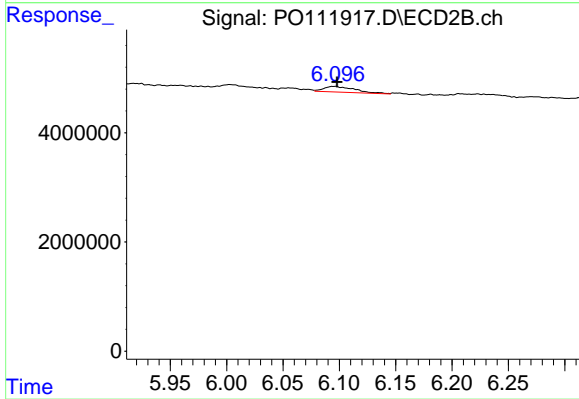
#27 AR-1254-2

R.T.: 5.695 min
 Delta R.T.: -0.002 min
 Response: 1070057
 Conc: 3.83 ng/ml



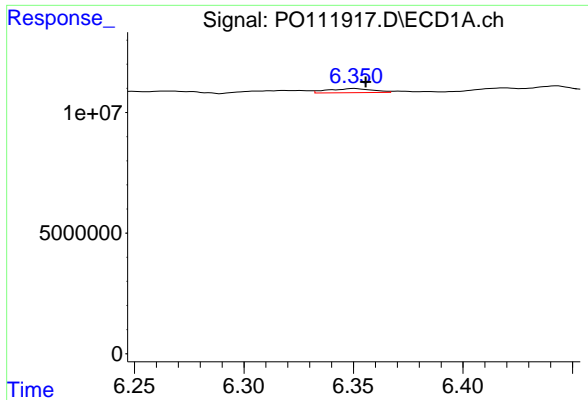
#28 AR-1254-3

R.T.: 6.125 min
 Delta R.T.: 0.000 min
 Response: 2225180
 Conc: 3.89 ng/ml



#28 AR-1254-3

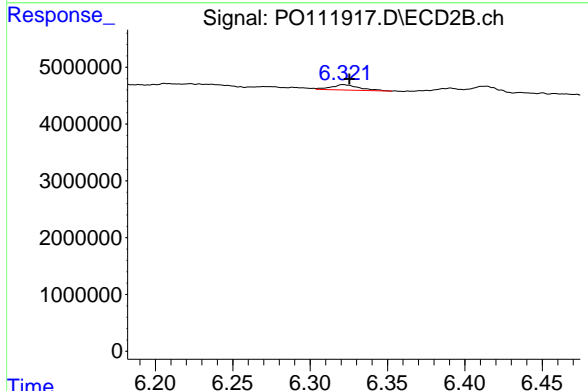
R.T.: 6.097 min
 Delta R.T.: -0.001 min
 Response: 1984310
 Conc: 4.74 ng/ml



#29 AR-1254-4

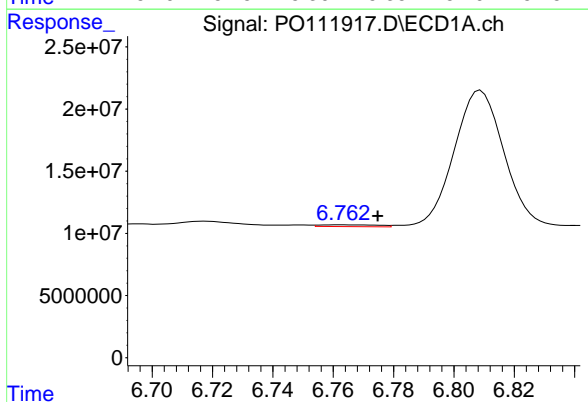
R.T.: 6.351 min
 Delta R.T.: -0.005 min
 Response: 2441891
 Conc: 7.00 ng/ml

Instrument :
 ECD_O
 ClientSampleId :



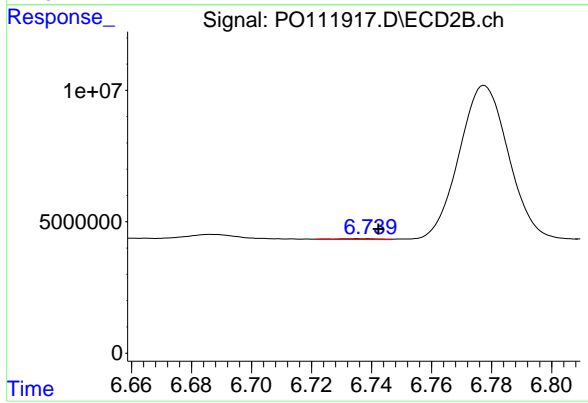
#29 AR-1254-4

R.T.: 6.321 min
 Delta R.T.: -0.004 min
 Response: 1224606
 Conc: 5.38 ng/ml



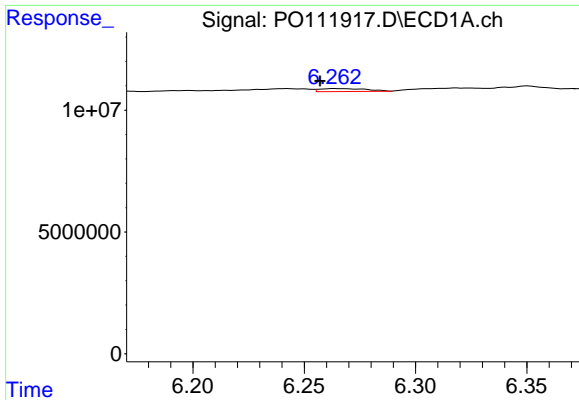
#30 AR-1254-5

R.T.: 6.763 min
 Delta R.T.: -0.012 min
 Response: 1952230
 Conc: 3.81 ng/ml



#30 AR-1254-5

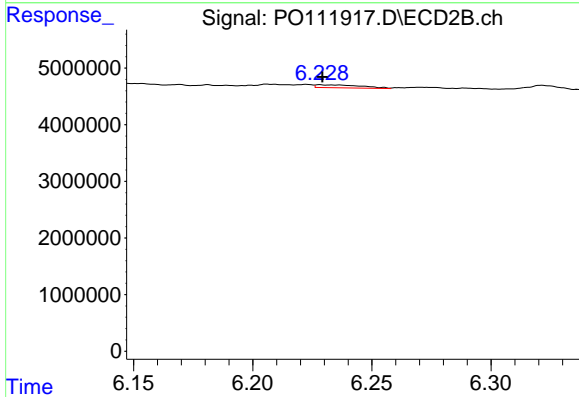
R.T.: 6.736 min
 Delta R.T.: -0.006 min
 Response: 308536
 Conc: 0.95 ng/ml



#31 AR-1260-1

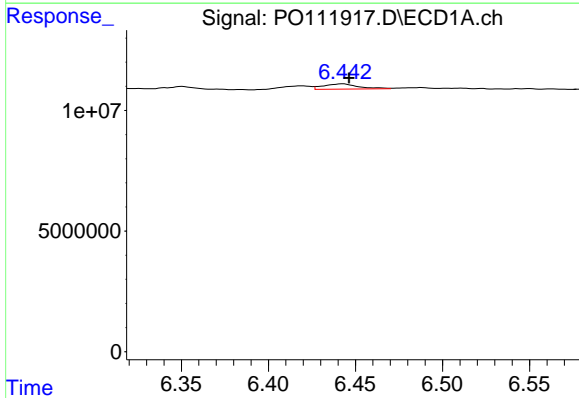
R.T.: 6.264 min
 Delta R.T.: 0.007 min
 Response: 1740262
 Conc: 4.90 ng/ml

Instrument :
 ECD_O
 ClientSampleId :



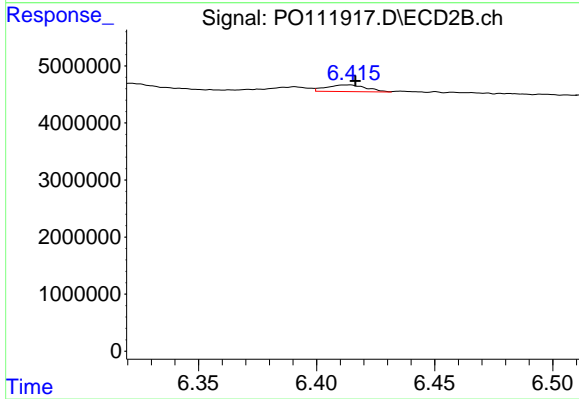
#31 AR-1260-1

R.T.: 6.228 min
 Delta R.T.: 0.000 min
 Response: 684599
 Conc: 2.73 ng/ml



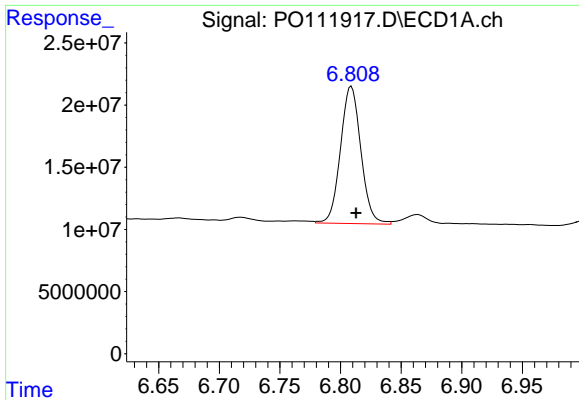
#32 AR-1260-2

R.T.: 6.443 min
 Delta R.T.: -0.004 min
 Response: 3068597
 Conc: 6.49 ng/ml



#32 AR-1260-2

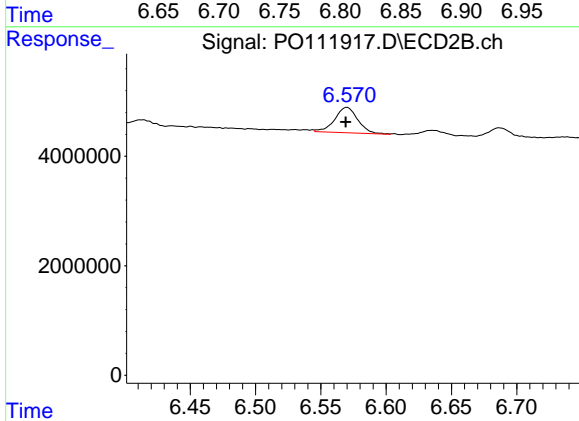
R.T.: 6.414 min
 Delta R.T.: -0.002 min
 Response: 1383770
 Conc: 4.71 ng/ml



#33 AR-1260-3

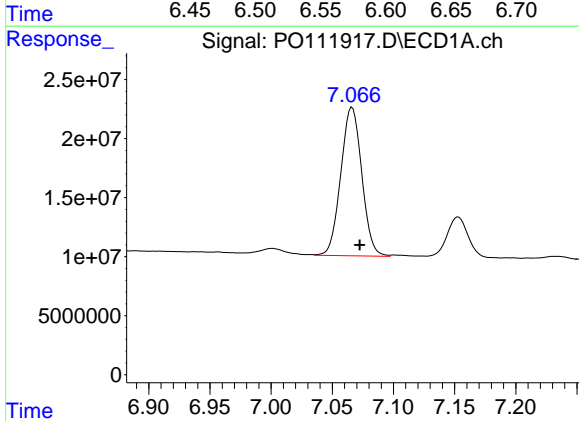
R.T.: 6.809 min
 Delta R.T.: -0.004 min
 Response: 129120917
 Conc: 304.05 ng/ml

Instrument :
 ECD_O
 ClientSampleId :



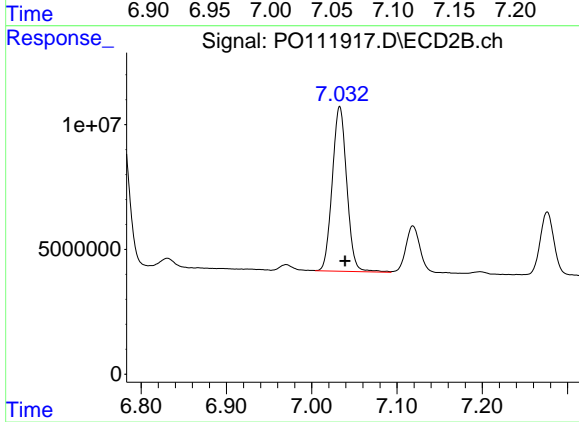
#33 AR-1260-3

R.T.: 6.570 min
 Delta R.T.: 0.000 min
 Response: 5721645
 Conc: 21.41 ng/ml



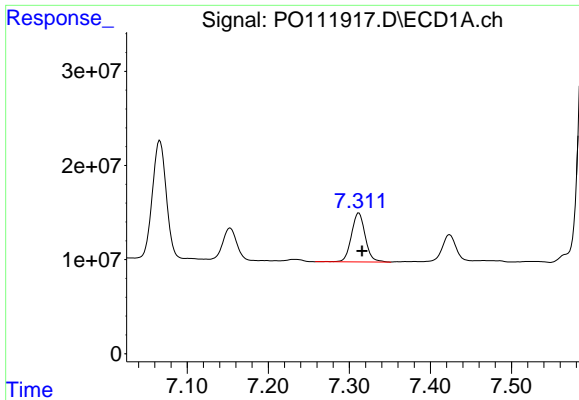
#34 AR-1260-4

R.T.: 7.066 min
 Delta R.T.: -0.006 min
 Response: 150260647
 Conc: 477.86 ng/ml



#34 AR-1260-4

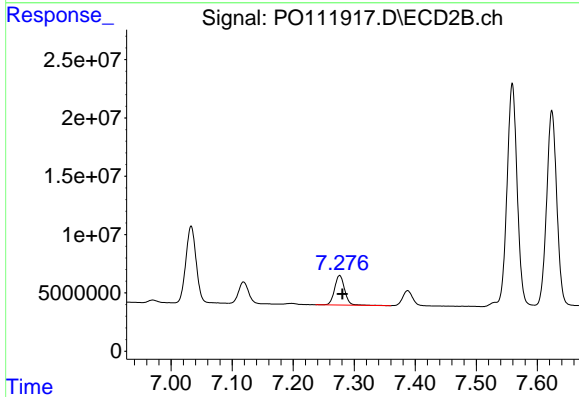
R.T.: 7.033 min
 Delta R.T.: -0.006 min
 Response: 78057789
 Conc: 410.62 ng/ml



#35 AR-1260-5

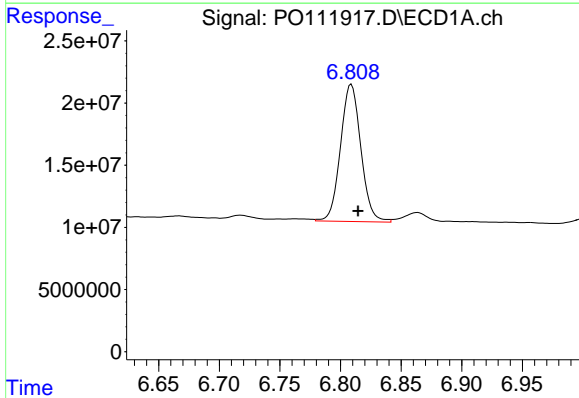
R.T.: 7.312 min
 Delta R.T.: -0.004 min
 Response: 61530422
 Conc: 74.70 ng/ml

Instrument :
 ECD_O
 ClientSampleId :



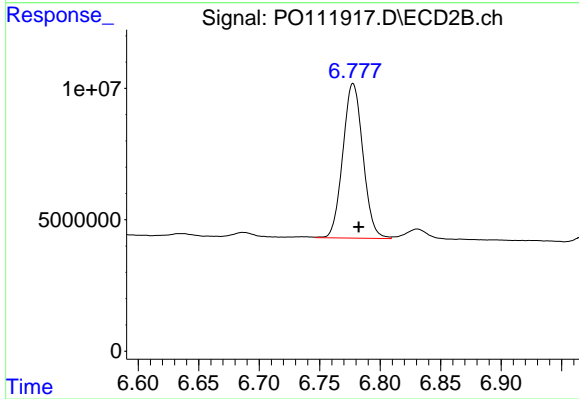
#35 AR-1260-5

R.T.: 7.276 min
 Delta R.T.: -0.004 min
 Response: 29467657
 Conc: 69.33 ng/ml



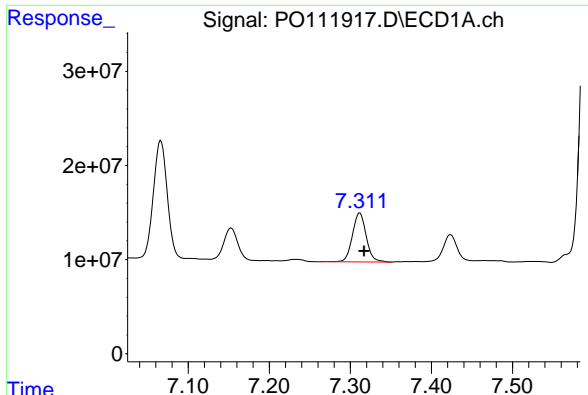
#36 AR-1262-1

R.T.: 6.809 min
 Delta R.T.: -0.006 min
 Response: 129120917
 Conc: 211.72 ng/ml



#36 AR-1262-1

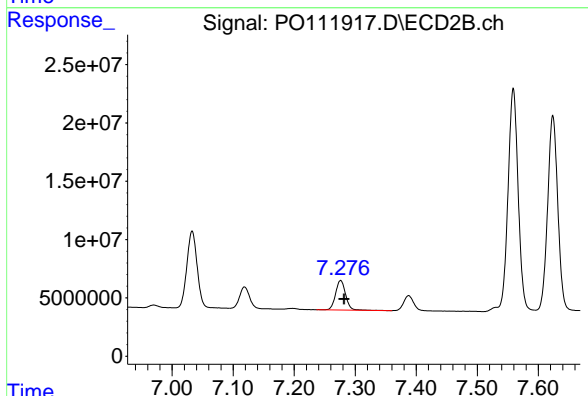
R.T.: 6.778 min
 Delta R.T.: -0.005 min
 Response: 68068147
 Conc: 201.59 ng/ml



#37 AR-1262-2

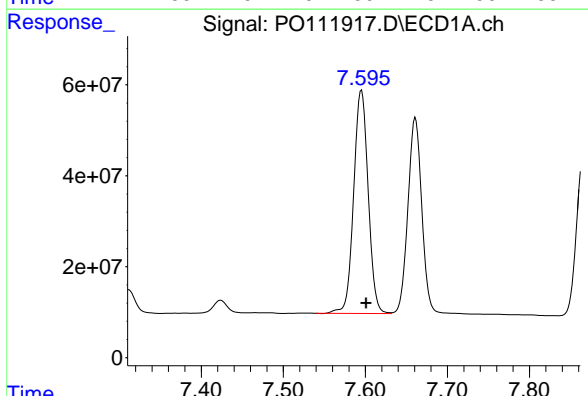
R.T.: 7.312 min
 Delta R.T.: -0.005 min
 Response: 61530422
 Conc: 65.36 ng/ml

Instrument :
 ECD_O
 ClientSampleId :



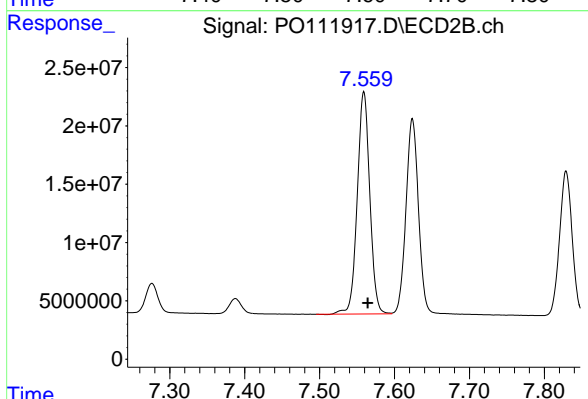
#37 AR-1262-2

R.T.: 7.276 min
 Delta R.T.: -0.005 min
 Response: 29467657
 Conc: 63.27 ng/ml



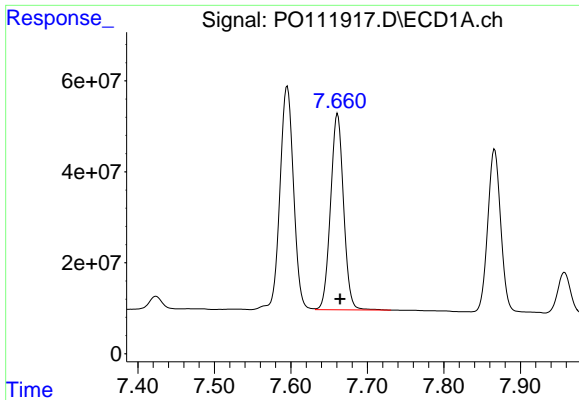
#38 AR-1262-3

R.T.: 7.595 min
 Delta R.T.: -0.006 min
 Response: 603217808
 Conc: 1520.89 ng/ml



#38 AR-1262-3

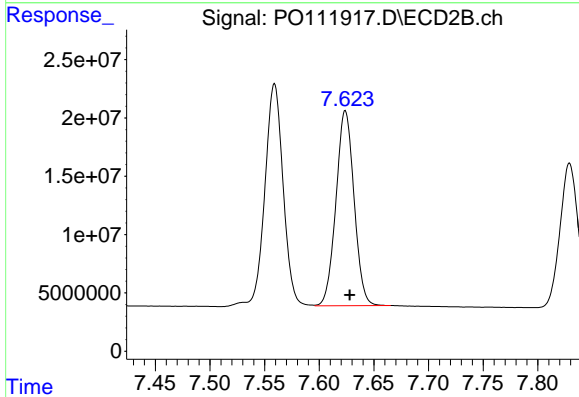
R.T.: 7.559 min
 Delta R.T.: -0.005 min
 Response: 221231651
 Conc: 1330.44 ng/ml



#39 AR-1262-4

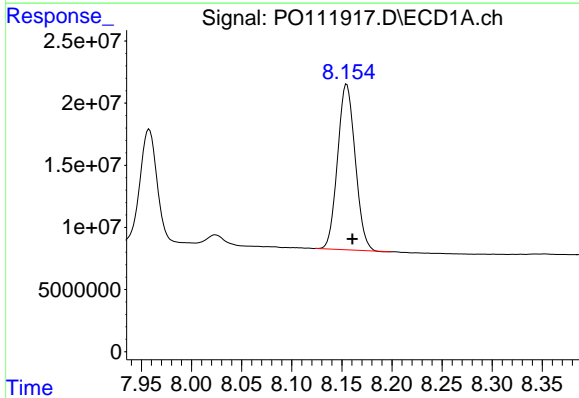
R.T.: 7.661 min
 Delta R.T.: -0.003 min
 Response: 507457891
 Conc: 772.38 ng/ml

Instrument :
 ECD_O
 ClientSampleId :



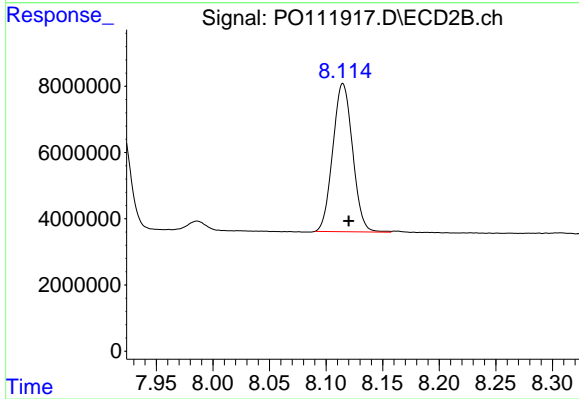
#39 AR-1262-4

R.T.: 7.624 min
 Delta R.T.: -0.004 min
 Response: 192816526
 Conc: 695.91 ng/ml



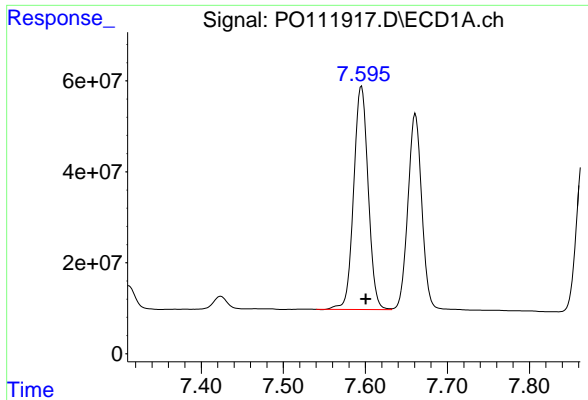
#40 AR-1262-5

R.T.: 8.155 min
 Delta R.T.: -0.006 min
 Response: 163097037
 Conc: 535.33 ng/ml



#40 AR-1262-5

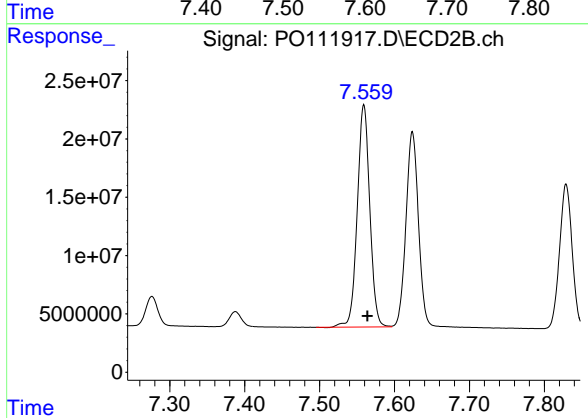
R.T.: 8.115 min
 Delta R.T.: -0.005 min
 Response: 54478216
 Conc: 536.10 ng/ml



#41 AR-1268-1

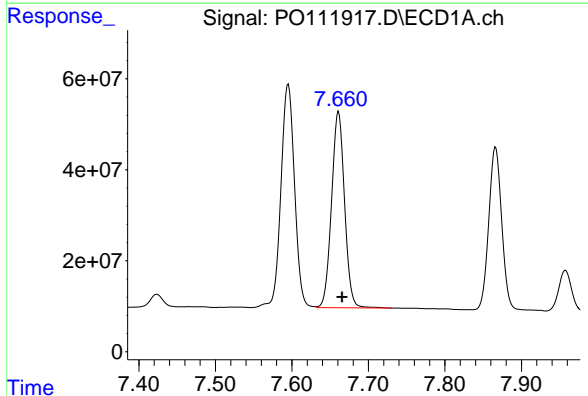
R.T.: 7.595 min
Delta R.T.: -0.005 min
Response: 603217808
Conc: 535.45 ng/ml

Instrument :
ECD_O
ClientSampleId :



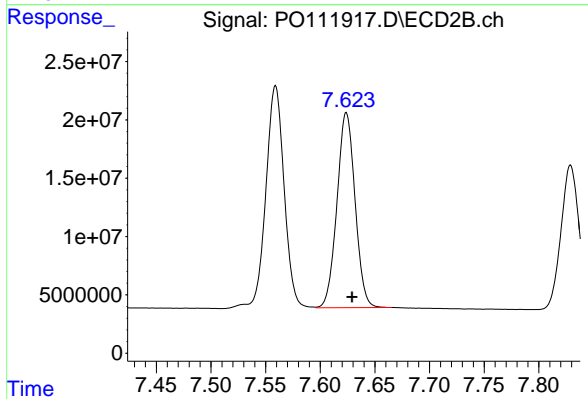
#41 AR-1268-1

R.T.: 7.559 min
Delta R.T.: -0.005 min
Response: 221231651
Conc: 462.44 ng/ml



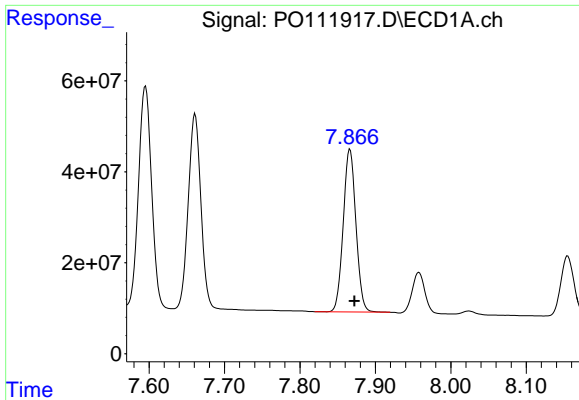
#42 AR-1268-2

R.T.: 7.661 min
Delta R.T.: -0.005 min
Response: 507457891
Conc: 519.28 ng/ml



#42 AR-1268-2

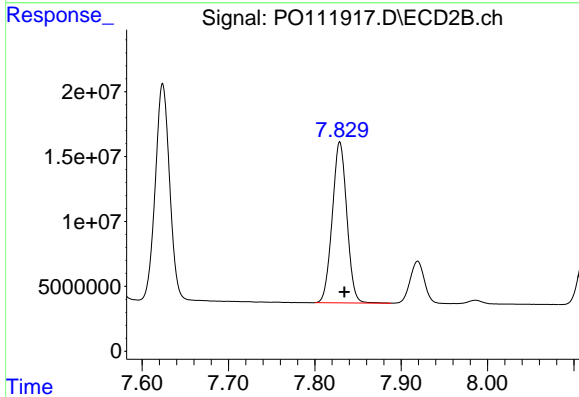
R.T.: 7.624 min
Delta R.T.: -0.005 min
Response: 192816526
Conc: 462.94 ng/ml



#43 AR-1268-3

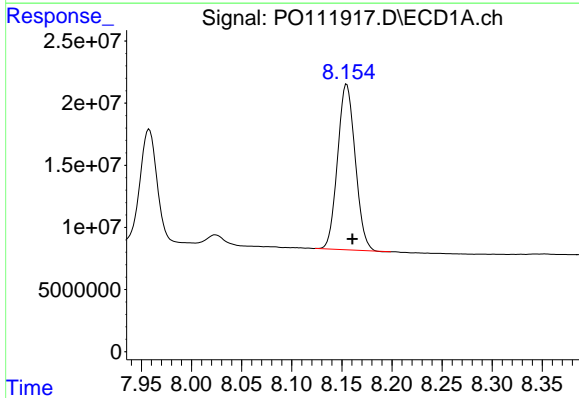
R.T.: 7.866 min
Delta R.T.: -0.006 min
Response: 417933660
Conc: 509.91 ng/ml

Instrument :
ECD_O
ClientSampleId :



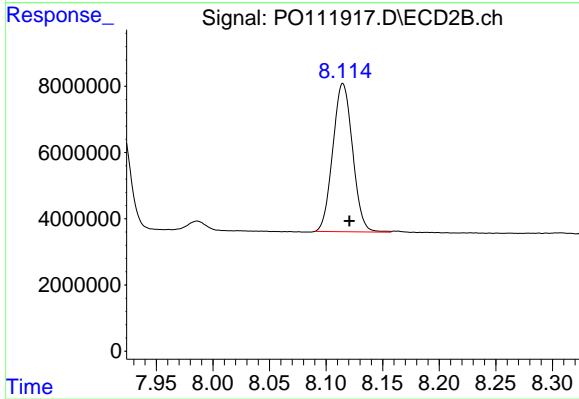
#43 AR-1268-3

R.T.: 7.829 min
Delta R.T.: -0.005 min
Response: 145237450
Conc: 458.23 ng/ml



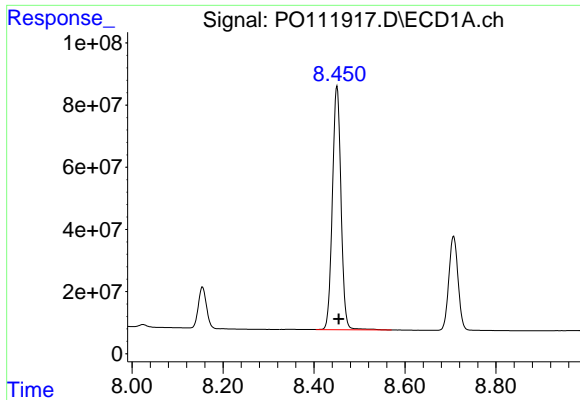
#44 AR-1268-4

R.T.: 8.155 min
Delta R.T.: -0.006 min
Response: 163097037
Conc: 474.14 ng/ml



#44 AR-1268-4

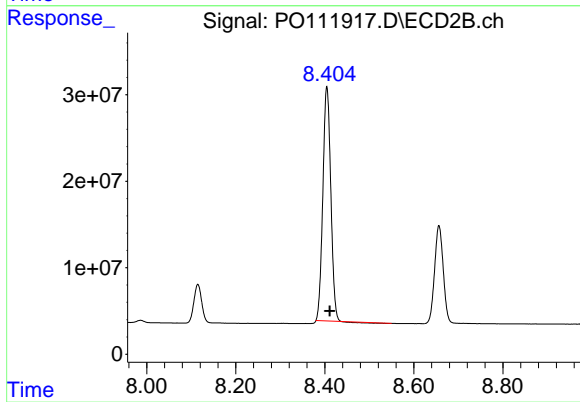
R.T.: 8.115 min
Delta R.T.: -0.006 min
Response: 54478216
Conc: 471.03 ng/ml



#45 AR-1268-5

R.T.: 8.451 min
Delta R.T.: -0.004 min
Response: 1029982180
Conc: 463.86 ng/ml

Instrument :
ECD_O
ClientSampleId :



#45 AR-1268-5

R.T.: 8.405 min
Delta R.T.: -0.007 min
Response: 332038878
Conc: 458.21 ng/ml