

Data Path : Z:\pestpcbsrv\HPCHEM1\ECD_0\Data\P0070125\
 Data File : P0111952.D
 Signal(s) : Signal #1: ECD1A.ch Signal #2: ECD2B.ch
 Acq On : 01 Jul 2025 23:07
 Operator : YP/AJ
 Sample : Q2458-09
 Misc :
 ALS Vial : 29 Sample Multiplier: 1

Instrument :
 ECD_0
 ClientSampleId :
 TP-59

Integration File signal 1: autoint1.e
 Integration File signal 2: autoint2.e
 Quant Time: Jul 02 01:52:26 2025
 Quant Method : Z:\pestpcbsrv\HPCHEM1\ECD_0\methods\P0061125.M
 Quant Title : GC EXTRACTABLES
 QLast Update : Thu Jun 12 06:25:26 2025
 Response via : Initial Calibration
 Integrator: ChemStation

Volume Inj. : 2 µl
 Signal #1 Phase : ZB-MR1 Signal #2 Phase: ZB-MR2
 Signal #1 Info : 30Mx0.32mmx 0.50µ Signal #2 Info : 30M x 0.32mm x 0.25µm

| Compound | RT#1 | RT#2 | Resp#1 | Resp#2 | ng/ml | ng/ml |
|-----------------------------|--------|--------|----------|----------|----------|-----------|
| System Monitoring Compounds | | | | | | |
| 1) SA Tetrachlo... | 3.676 | 3.671 | 110.2E6 | 97715168 | 19.132 | 17.395 |
| 2) SA Decachlor... | 8.708 | 8.657 | 60163811 | 25280006 | 11.461 | 14.221 |
| Target Compounds | | | | | | |
| 3) L1 AR-1016-1 | 4.748 | 4.734 | 119.9E6 | 56095909 | 502.760 | 285.088 # |
| 4) L1 AR-1016-2 | 4.748f | 4.734f | 119.9E6 | 56095909 | 360.443 | 196.910 # |
| 5) L1 AR-1016-3 | 4.871 | 4.920 | 259.0E6 | 381286 | 1125.586 | 2.538 # |
| 6) L1 AR-1016-4 | 4.964 | 4.994 | 27422345 | 8658031 | 147.859 | 71.091 # |
| 7) L1 AR-1016-5 | 5.199 | 5.184 | 29496322 | 4779154 | 158.036 | 30.020 # |
| 8) L2 AR-1221-1 | 3.898 | 3.890 | 3327633 | 2651563 | 38.214 | 35.509 |
| 9) L2 AR-1221-2 | 3.979 | 3.970 | 3148371 | 2723168 | 49.065 | 48.672 |
| 10) L2 AR-1221-3 | 4.034 | 4.062 | 1060141 | 2947447 | 5.436 | 17.153 # |
| 11) L3 AR-1232-1 | 4.034 | 4.062 | 1060141 | 2947447 | 6.986 | 22.163 # |
| 12) L3 AR-1232-2 | 4.577 | 4.734f | 76507317 | 56095909 | 887.338 | 425.643 # |
| 13) L3 AR-1232-3 | 4.748f | 4.920 | 119.9E6 | 381286 | 736.337 | 5.516 # |
| 14) L3 AR-1232-4 | 4.964 | 5.024 | 27422345 | 712263 | 315.130 | 11.776 # |
| 15) L3 AR-1232-5 | 5.001 | 5.184 | 70289612 | 4779154 | 1242.293 | 71.959 # |
| 16) L4 AR-1242-1 | 4.748 | 4.734 | 119.9E6 | 56095909 | 595.377 | 344.655 # |
| 17) L4 AR-1242-2 | 4.748f | 4.734f | 119.9E6 | 56095909 | 425.654 | 237.633 # |
| 18) L4 AR-1242-3 | 4.871 | 4.920 | 259.0E6 | 381286 | 1302.880 | 3.036 # |
| 19) L4 AR-1242-4 | 4.964 | 5.024 | 27422345 | 712263 | 173.343 | 5.812 # |
| 21) L5 AR-1248-1 | 4.748 | 4.734 | 119.9E6 | 56095909 | 743.712 | 420.874 # |
| 22) L5 AR-1248-2 | 5.001 | 4.994 | 70289612 | 8658031 | 326.011 | 48.598 # |
| 23) L5 AR-1248-3 | 5.199 | 5.024 | 29496322 | 712263 | 109.351 | 3.760 # |
| 24) L5 AR-1248-4 | 5.606f | 5.184 | 3291302 | 4779154 | 8.232 | 20.932 # |
| 27) L6 AR-1254-2 | 0.000 | 5.741f | 0 | 45367 | N.D. | 0.162 # |
| 28) L6 AR-1254-3 | 6.121 | 6.100 | 961377 | 103250 | 1.683 | 0.246 # |
| 29) L6 AR-1254-4 | 6.357 | 6.337 | 411862 | 170937 | 1.181 | 0.750 # |
| 30) L6 AR-1254-5 | 6.750 | 6.736 | 2927040 | 630957 | 5.715 | 1.938 # |
| 31) L7 AR-1260-1 | 6.267 | 6.231 | 739543 | 451745 | 2.081 | 1.800 |
| 32) L7 AR-1260-2 | 6.445 | 6.409 | 2755499 | 140091 | 5.832 | 0.476 # |
| 33) L7 AR-1260-3 | 6.813 | 6.558 | 962105 | 866185 | 2.266 | 3.242 # |
| 34) L7 AR-1260-4 | 7.081 | 7.038 | 522093 | 136919 | 1.660 | 0.720 # |
| 35) L7 AR-1260-5 | 7.318 | 7.283 | 1094542 | 219417 | 1.329 | 0.516 # |
| 36) L8 AR-1262-1 | 6.813 | 6.772 | 962105 | 882129 | 1.578 | 2.612 # |
| 37) L8 AR-1262-2 | 7.318 | 7.283 | 1094542 | 219417 | 1.163 | 0.471 # |
| 38) L8 AR-1262-3 | 7.598 | 7.558 | 1764730 | 804314 | 4.449 | 4.837 |
| 39) L8 AR-1262-4 | 7.648 | 7.613 | 807399 | 933463 | 1.229 | 3.369 # |
| 40) L8 AR-1262-5 | 8.156 | 8.122 | 152625 | 13899 | 0.501 | 0.137 # |
| 41) L9 AR-1268-1 | 7.598 | 7.558 | 1764730 | 804314 | 1.566 | 1.681 |
| 42) L9 AR-1268-2 | 7.682 | 7.613 | 349860 | 933463 | 0.358 | 2.241 # |
| 43) L9 AR-1268-3 | 7.856 | 7.832 | 292124 | 129691 | 0.356 | 0.409 |
| 44) L9 AR-1268-4 | 8.156 | 8.122 | 152625 | 13899 | 0.444 | 0.120 # |

Data Path : Z:\pestpcbsrv\HPCHEM1\ECD_0\Data\P0070125\
 Data File : P0111952.D
 Signal(s) : Signal #1: ECD1A.ch Signal #2: ECD2B.ch
 Acq On : 01 Jul 2025 23:07
 Operator : YP/AJ
 Sample : Q2458-09
 Misc :
 ALS Vial : 29 Sample Multiplier: 1

Instrument :
 ECD_0
 ClientSampleId :
 TP-59

Integration File signal 1: autoint1.e
 Integration File signal 2: autoint2.e
 Quant Time: Jul 02 01:52:26 2025
 Quant Method : Z:\pestpcbsrv\HPCHEM1\ECD_0\methods\P0061125.M
 Quant Title : GC EXTRACTABLES
 QLast Update : Thu Jun 12 06:25:26 2025
 Response via : Initial Calibration
 Integrator: ChemStation

Volume Inj. : 2 µl
 Signal #1 Phase : ZB-MR1 Signal #2 Phase: ZB-MR2
 Signal #1 Info : 30Mx0.32mmx 0.50µ Signal #2 Info : 30M x 0.32mm x 0.25µm

| | Compound | RT#1 | RT#2 | Resp#1 | Resp#2 | ng/ml | ng/ml |
|-----|--------------|-------|-------|--------|--------|-------|---------|
| 45) | L9 AR-1268-5 | 8.457 | 8.416 | 189896 | 44243 | 0.086 | 0.061 # |

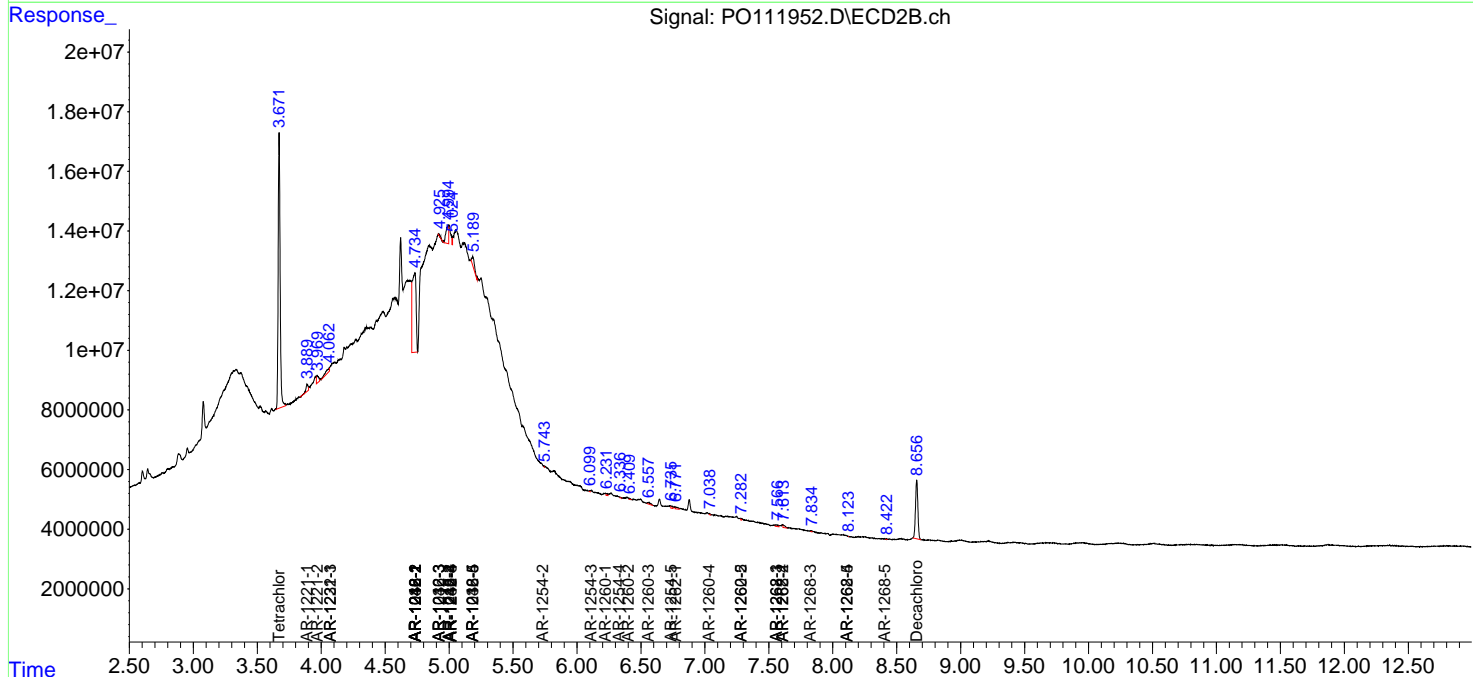
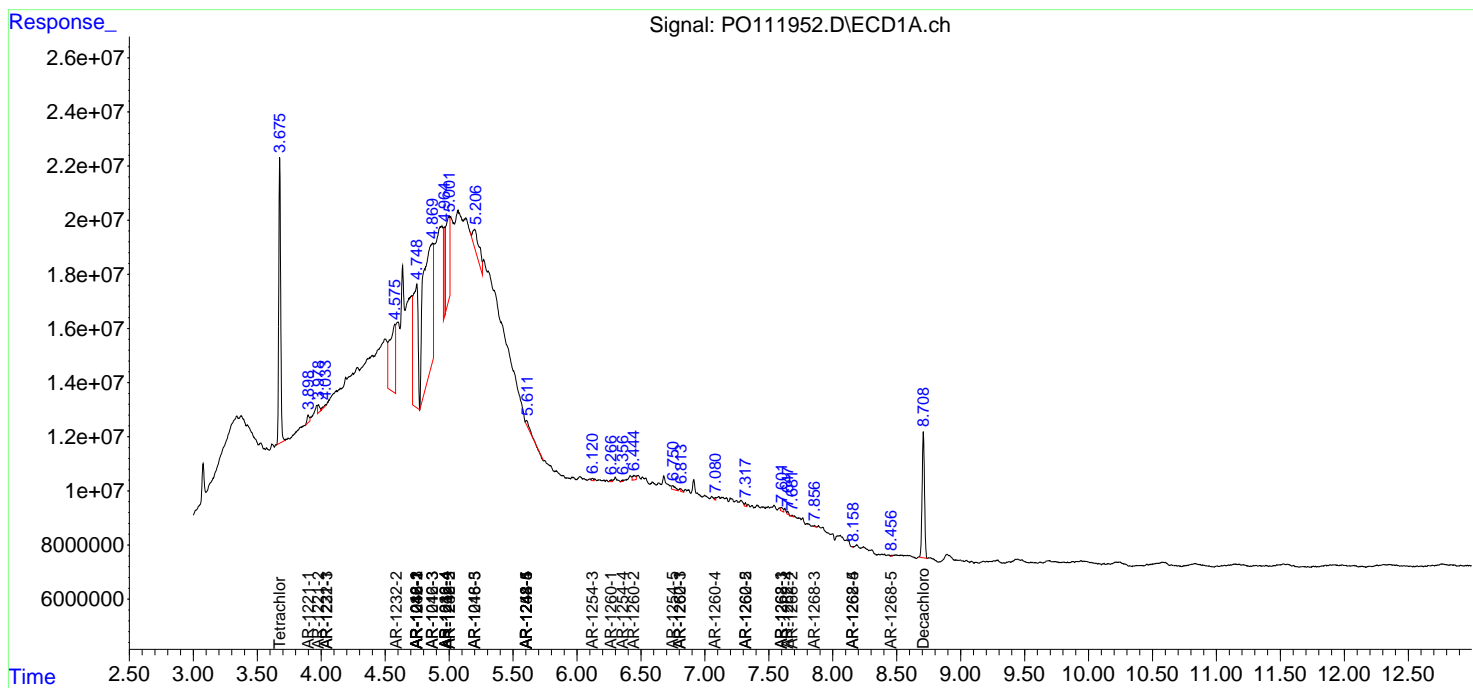
(f)=RT Delta > 1/2 Window (#)=Amounts differ by > 25% (m)=manual int.

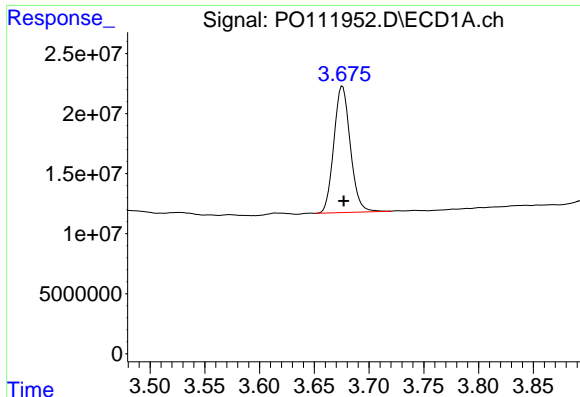
Data Path : Z:\pestpcbsrv\HPCHEM1\ECD_O\Data\P0070125\
 Data File : P0111952.D
 Signal(s) : Signal #1: ECD1A.ch Signal #2: ECD2B.ch
 Acq On : 01 Jul 2025 23:07
 Operator : YP/AJ
 Sample : Q2458-09
 Misc :
 ALS Vial : 29 Sample Multiplier: 1

Instrument :
 ECD_O
 ClientSampleId :
 TP-59

Integration File signal 1: autoint1.e
 Integration File signal 2: autoint2.e
 Quant Time: Jul 02 01:52:26 2025
 Quant Method : Z:\pestpcbsrv\HPCHEM1\ECD_O\methods\P0061125.M
 Quant Title : GC EXTRACTABLES
 QLast Update : Thu Jun 12 06:25:26 2025
 Response via : Initial Calibration
 Integrator: ChemStation

Volume Inj. : 2 µl
 Signal #1 Phase : ZB-MR1 Signal #2 Phase: ZB-MR2
 Signal #1 Info : 30Mx0.32mmx 0.50µ Signal #2 Info : 30M x 0.32mm x 0.25µm

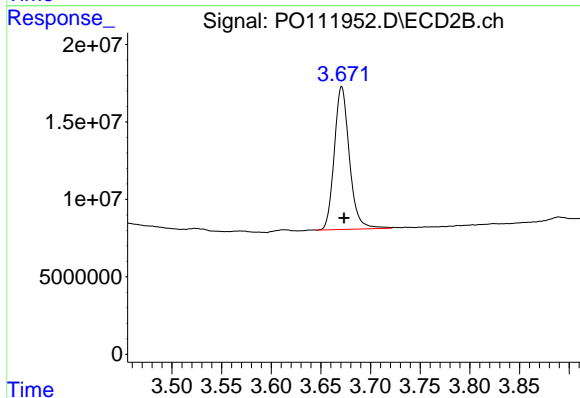




#1 Tetrachloro-m-xylene

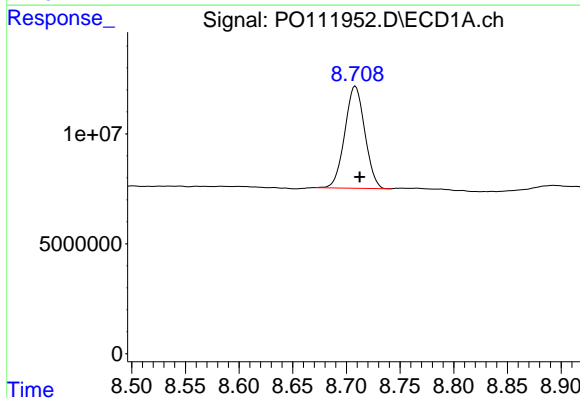
R.T.: 3.676 min
 Delta R.T.: -0.001 min
 Response: 110186969
 Conc: 19.13 ng/ml

Instrument :
 ECD_O
 ClientSampleId :
 TP-59



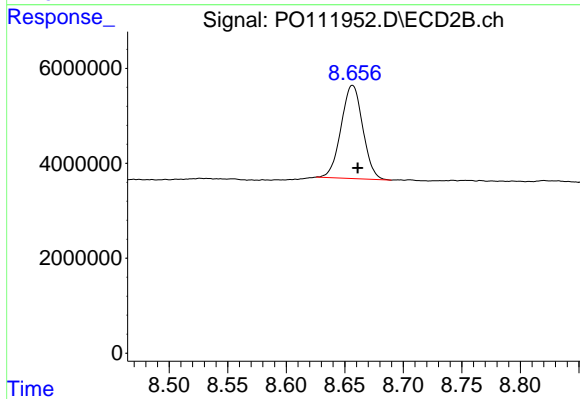
#1 Tetrachloro-m-xylene

R.T.: 3.671 min
 Delta R.T.: -0.002 min
 Response: 97715168
 Conc: 17.40 ng/ml



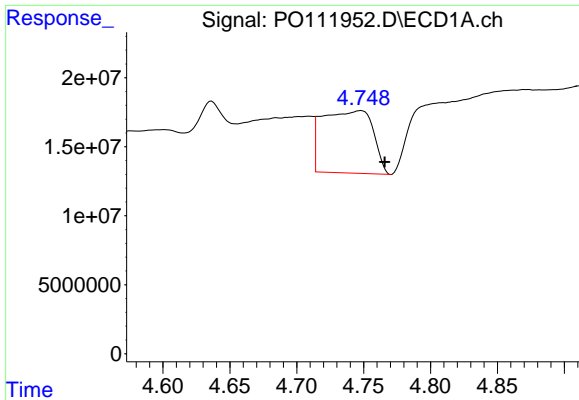
#2 Decachlorobiphenyl

R.T.: 8.708 min
 Delta R.T.: -0.004 min
 Response: 60163811
 Conc: 11.46 ng/ml



#2 Decachlorobiphenyl

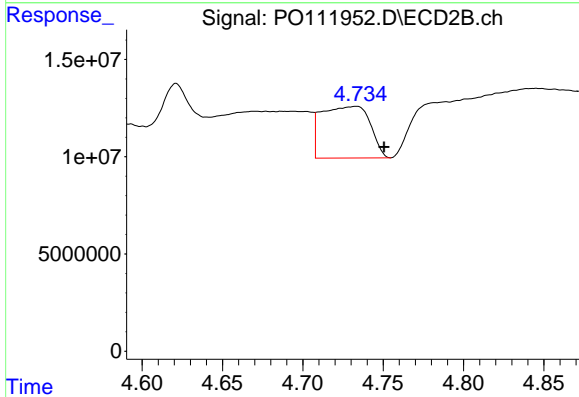
R.T.: 8.657 min
 Delta R.T.: -0.005 min
 Response: 25280006
 Conc: 14.22 ng/ml



#3 AR-1016-1

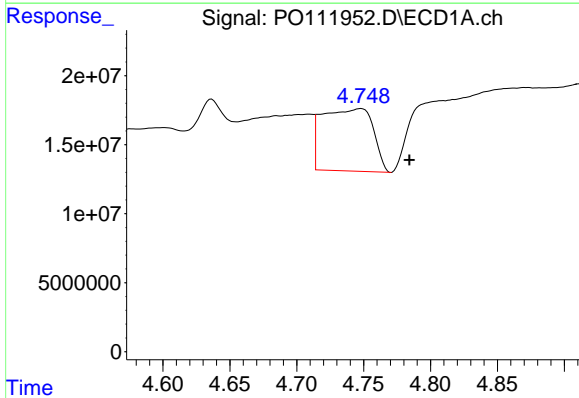
R.T.: 4.748 min
 Delta R.T.: -0.018 min
 Response: 119935101
 Conc: 502.76 ng/ml

Instrument :
 ECD_O
 ClientSampleId :
 TP-59



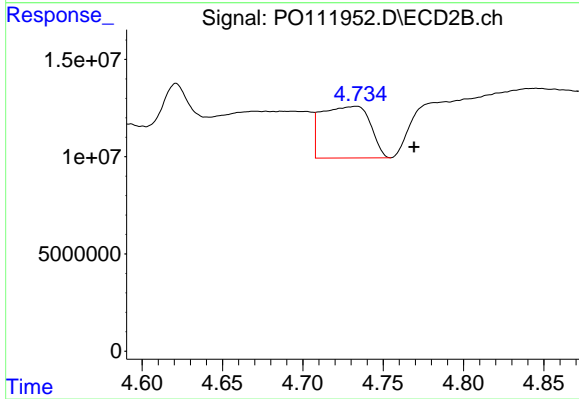
#3 AR-1016-1

R.T.: 4.734 min
 Delta R.T.: -0.017 min
 Response: 56095909
 Conc: 285.09 ng/ml



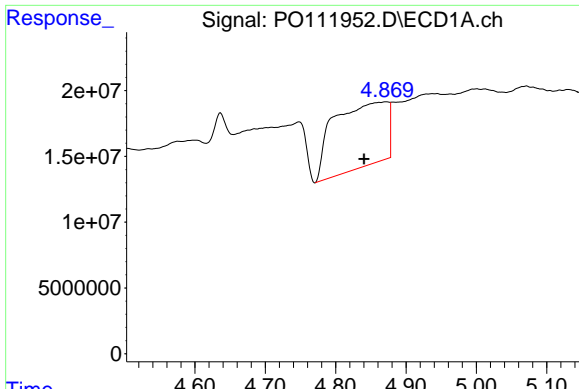
#4 AR-1016-2

R.T.: 4.748 min
 Delta R.T.: -0.036 min
 Response: 119935101
 Conc: 360.44 ng/ml



#4 AR-1016-2

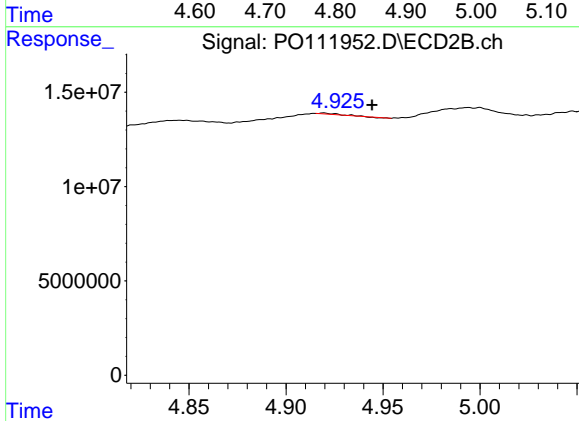
R.T.: 4.734 min
 Delta R.T.: -0.036 min
 Response: 56095909
 Conc: 196.91 ng/ml



#5 AR-1016-3

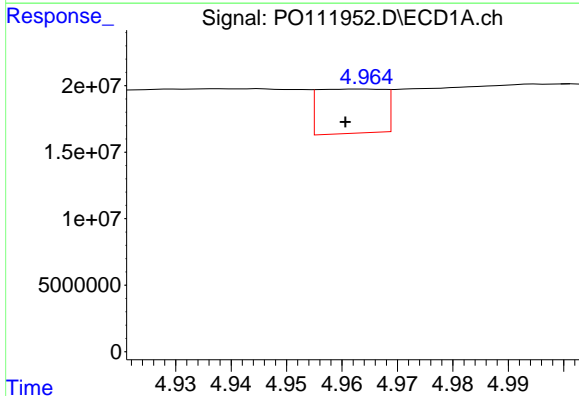
R.T.: 4.871 min
 Delta R.T.: 0.031 min
 Response: 259043235
 Conc: 1125.59 ng/ml

Instrument :
 ECD_O
 ClientSampleId :
 TP-59



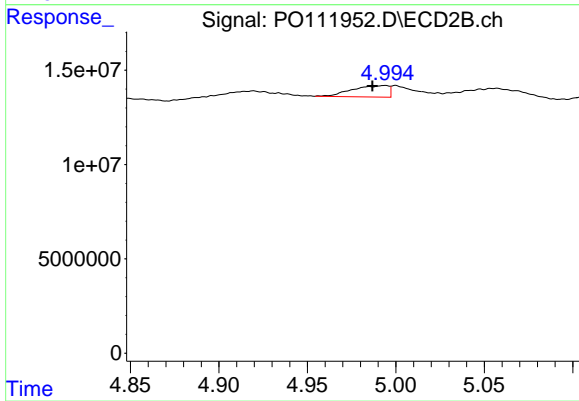
#5 AR-1016-3

R.T.: 4.920 min
 Delta R.T.: -0.025 min
 Response: 381286
 Conc: 2.54 ng/ml



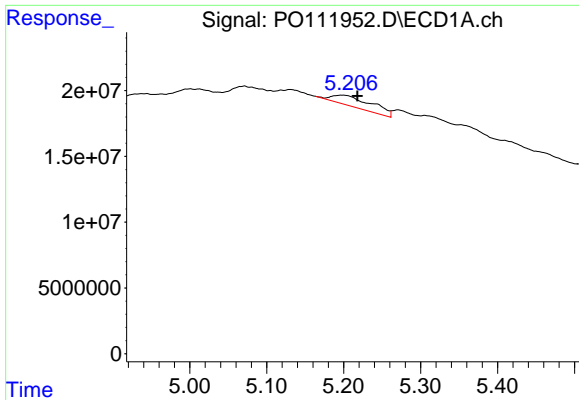
#6 AR-1016-4

R.T.: 4.964 min
 Delta R.T.: 0.003 min
 Response: 27422345
 Conc: 147.86 ng/ml



#6 AR-1016-4

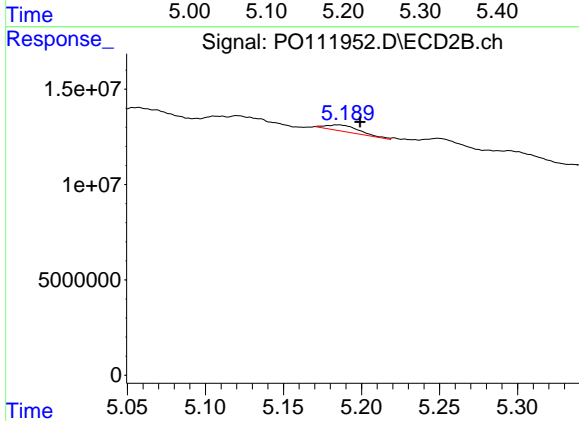
R.T.: 4.994 min
 Delta R.T.: 0.007 min
 Response: 8658031
 Conc: 71.09 ng/ml



#7 AR-1016-5

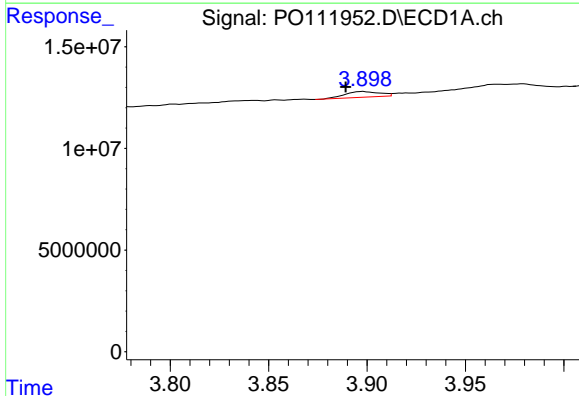
R.T.: 5.199 min
 Delta R.T.: -0.019 min
 Response: 29496322
 Conc: 158.04 ng/ml

Instrument :
 ECD_O
 ClientSampleId :
 TP-59



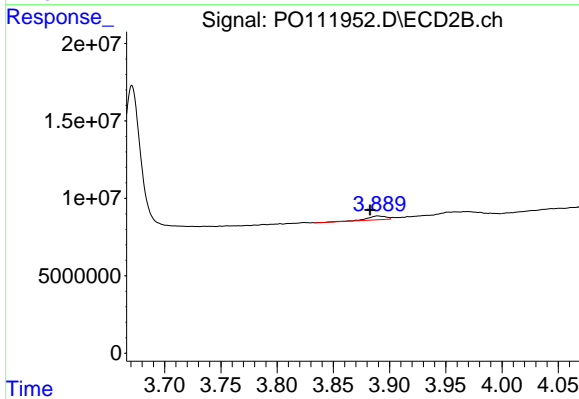
#7 AR-1016-5

R.T.: 5.184 min
 Delta R.T.: -0.015 min
 Response: 4779154
 Conc: 30.02 ng/ml



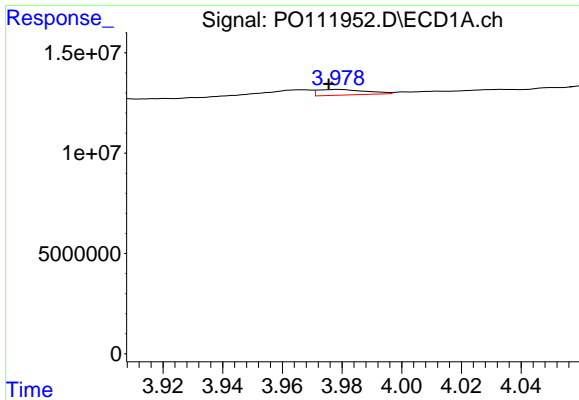
#8 AR-1221-1

R.T.: 3.898 min
 Delta R.T.: 0.009 min
 Response: 3327633
 Conc: 38.21 ng/ml



#8 AR-1221-1

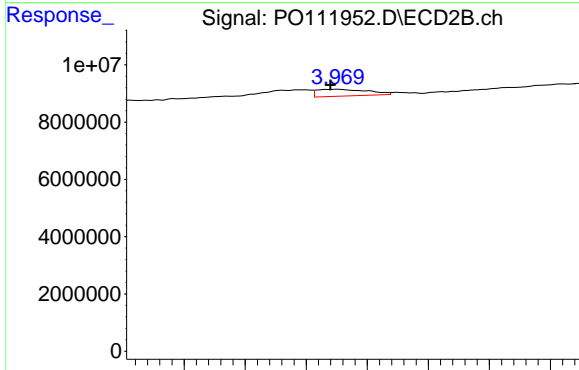
R.T.: 3.890 min
 Delta R.T.: 0.007 min
 Response: 2651563
 Conc: 35.51 ng/ml



#9 AR-1221-2

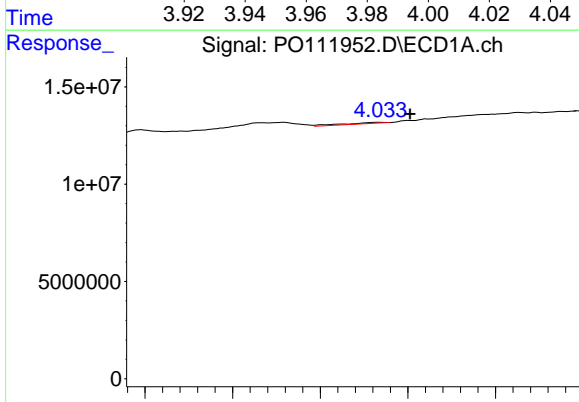
R.T.: 3.979 min
 Delta R.T.: 0.004 min
 Response: 3148371
 Conc: 49.06 ng/ml

Instrument :
 ECD_O
 ClientSampleId :
 TP-59



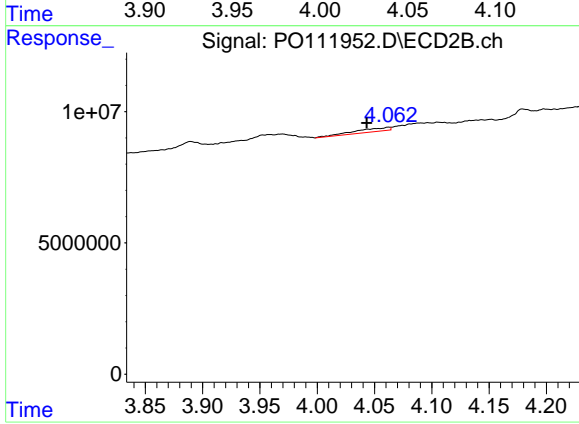
#9 AR-1221-2

R.T.: 3.970 min
 Delta R.T.: 0.002 min
 Response: 2723168
 Conc: 48.67 ng/ml



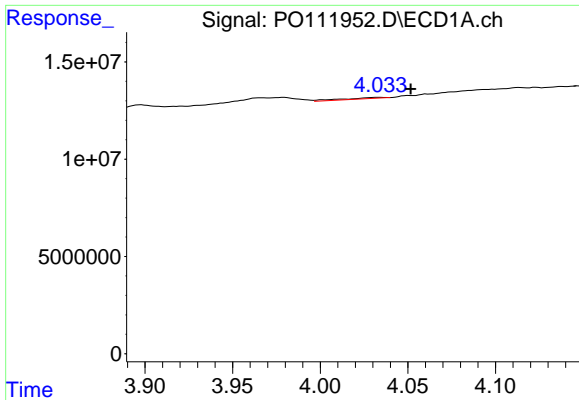
#10 AR-1221-3

R.T.: 4.034 min
 Delta R.T.: -0.018 min
 Response: 1060141
 Conc: 5.44 ng/ml



#10 AR-1221-3

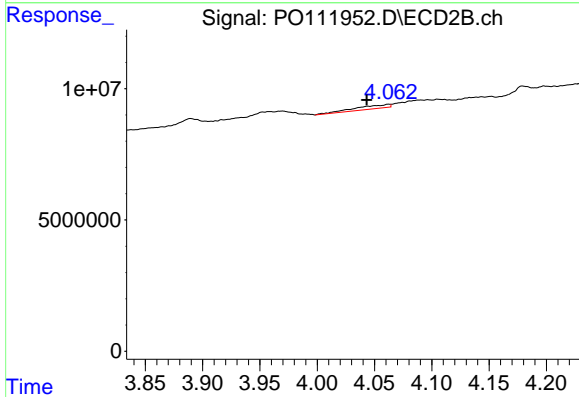
R.T.: 4.062 min
 Delta R.T.: 0.019 min
 Response: 2947447
 Conc: 17.15 ng/ml



#11 AR-1232-1

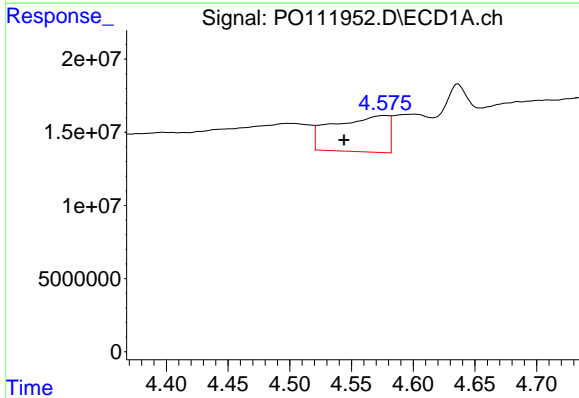
R.T.: 4.034 min
 Delta R.T.: -0.018 min
 Response: 1060141
 Conc: 6.99 ng/ml

Instrument :
 ECD_O
 ClientSampleId :
 TP-59



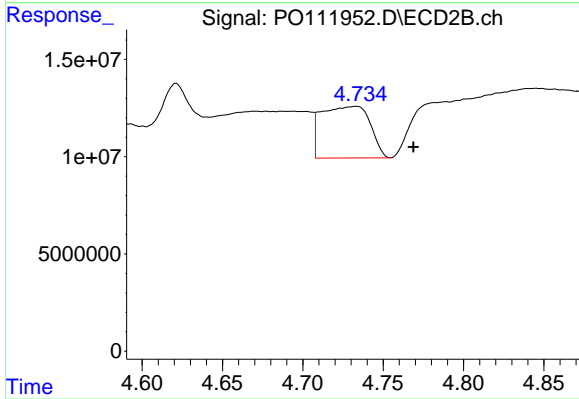
#11 AR-1232-1

R.T.: 4.062 min
 Delta R.T.: 0.019 min
 Response: 2947447
 Conc: 22.16 ng/ml



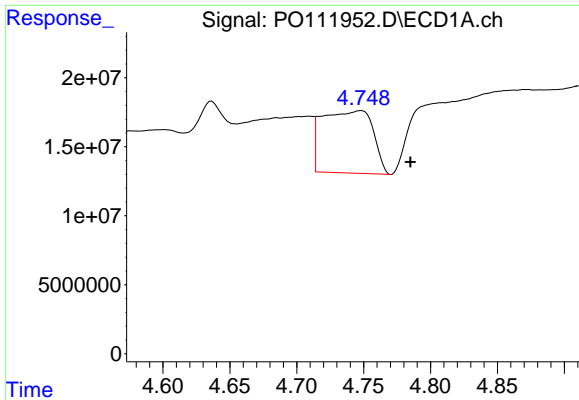
#12 AR-1232-2

R.T.: 4.577 min
 Delta R.T.: 0.033 min
 Response: 76507317
 Conc: 887.34 ng/ml



#12 AR-1232-2

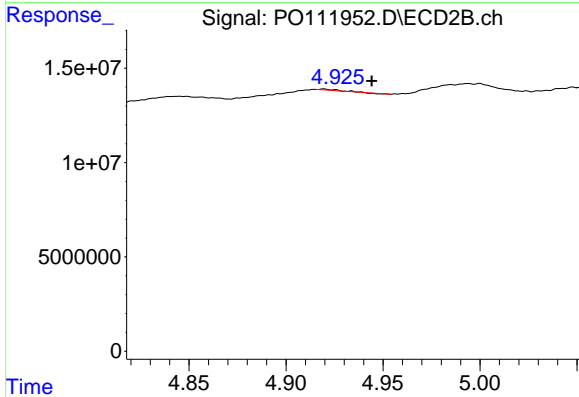
R.T.: 4.734 min
 Delta R.T.: -0.035 min
 Response: 56095909
 Conc: 425.64 ng/ml



#13 AR-1232-3

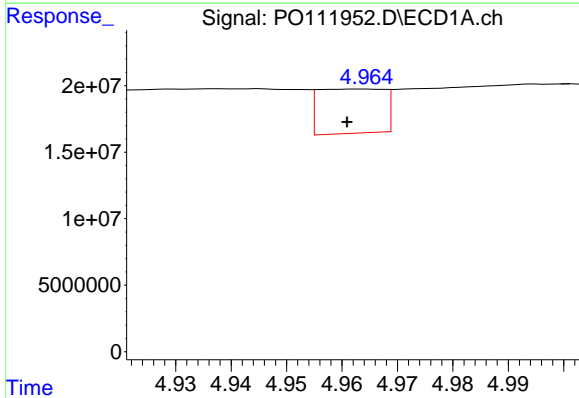
R.T.: 4.748 min
 Delta R.T.: -0.037 min
 Response: 119935101
 Conc: 736.34 ng/ml

Instrument :
 ECD_O
 ClientSampleId :
 TP-59



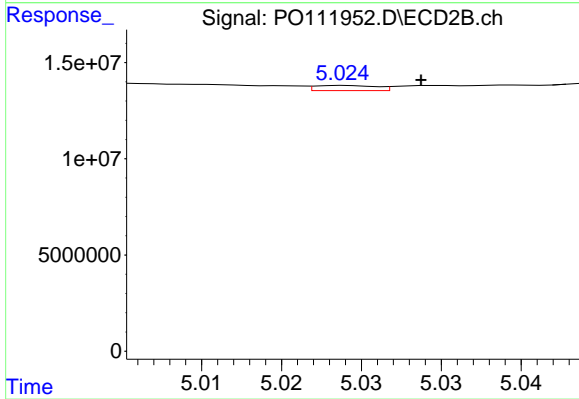
#13 AR-1232-3

R.T.: 4.920 min
 Delta R.T.: -0.025 min
 Response: 381286
 Conc: 5.52 ng/ml



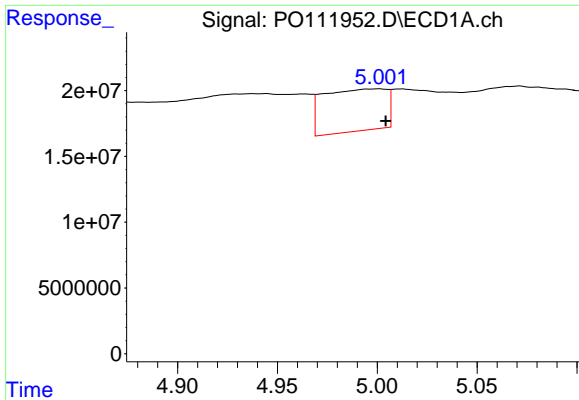
#14 AR-1232-4

R.T.: 4.964 min
 Delta R.T.: 0.003 min
 Response: 27422345
 Conc: 315.13 ng/ml



#14 AR-1232-4

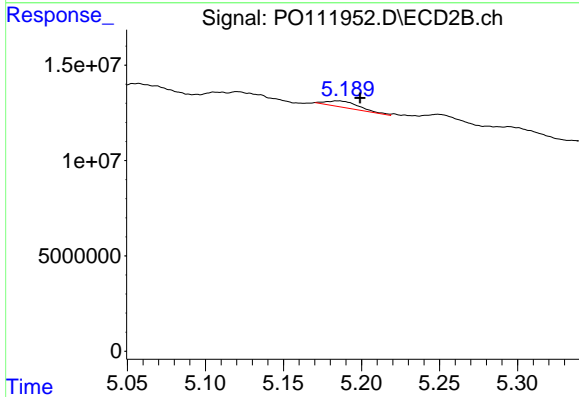
R.T.: 5.024 min
 Delta R.T.: -0.005 min
 Response: 712263
 Conc: 11.78 ng/ml



#15 AR-1232-5

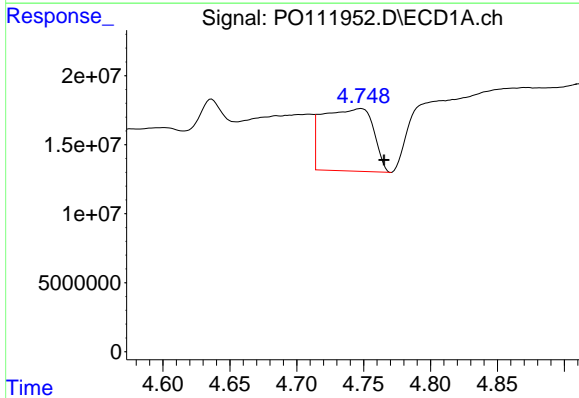
R.T.: 5.001 min
 Delta R.T.: -0.003 min
 Response: 70289612
 Conc: 1242.29 ng/ml

Instrument :
 ECD_O
 ClientSampleId :
 TP-59



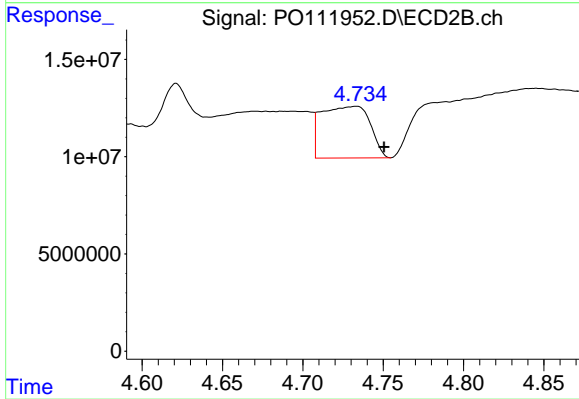
#15 AR-1232-5

R.T.: 5.184 min
 Delta R.T.: -0.015 min
 Response: 4779154
 Conc: 71.96 ng/ml



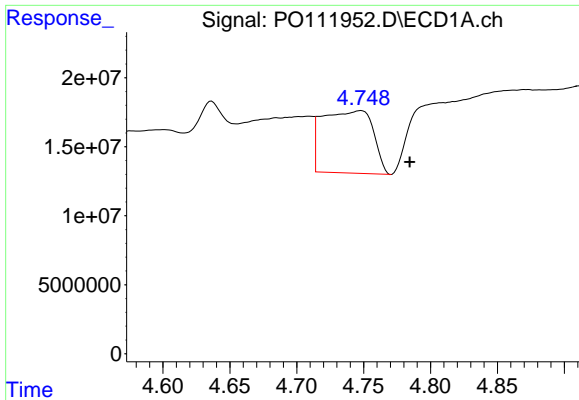
#16 AR-1242-1

R.T.: 4.748 min
 Delta R.T.: -0.017 min
 Response: 119935101
 Conc: 595.38 ng/ml



#16 AR-1242-1

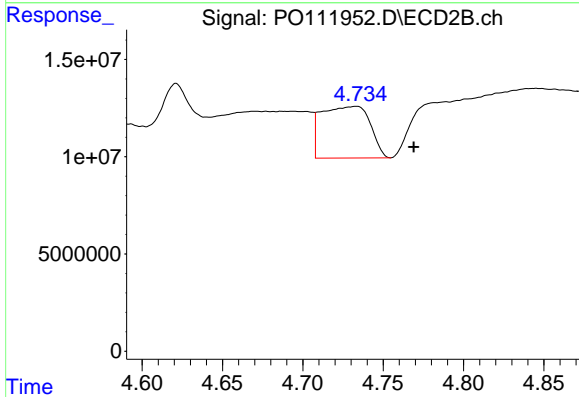
R.T.: 4.734 min
 Delta R.T.: -0.017 min
 Response: 56095909
 Conc: 344.65 ng/ml



#17 AR-1242-2

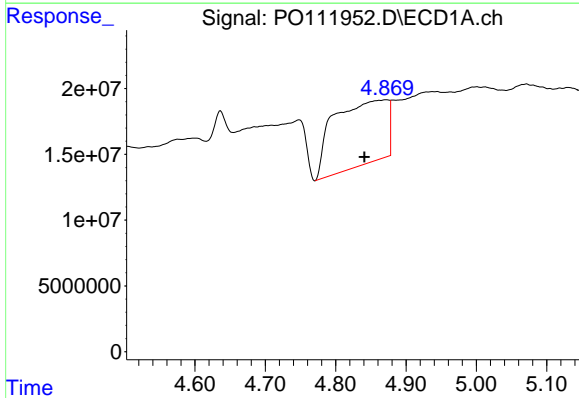
R.T.: 4.748 min
 Delta R.T.: -0.036 min
 Response: 119935101
 Conc: 425.65 ng/ml

Instrument :
 ECD_O
 ClientSampleId :
 TP-59



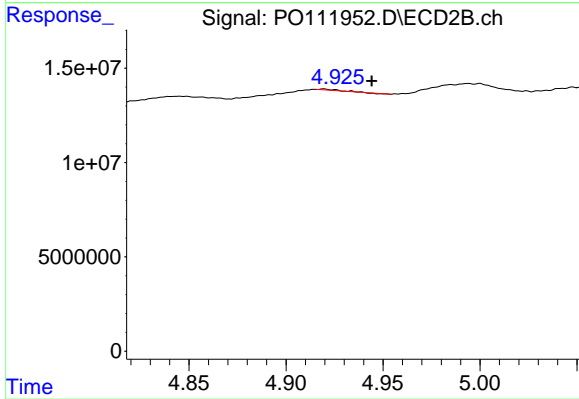
#17 AR-1242-2

R.T.: 4.734 min
 Delta R.T.: -0.035 min
 Response: 56095909
 Conc: 237.63 ng/ml



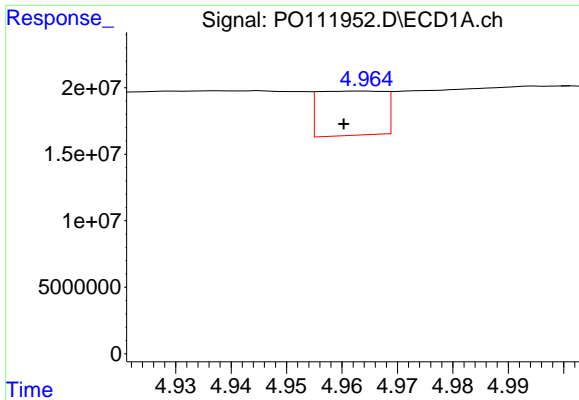
#18 AR-1242-3

R.T.: 4.871 min
 Delta R.T.: 0.030 min
 Response: 259043235
 Conc: 1302.88 ng/ml



#18 AR-1242-3

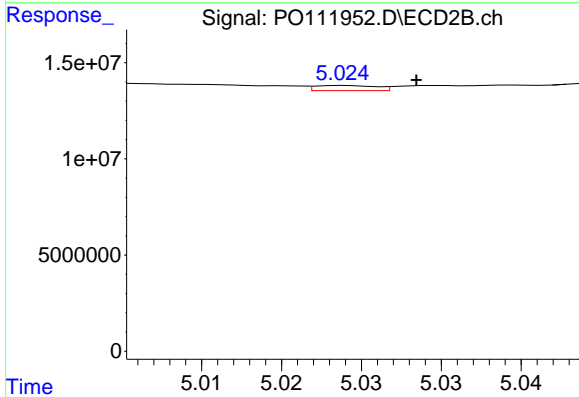
R.T.: 4.920 min
 Delta R.T.: -0.025 min
 Response: 381286
 Conc: 3.04 ng/ml



#19 AR-1242-4

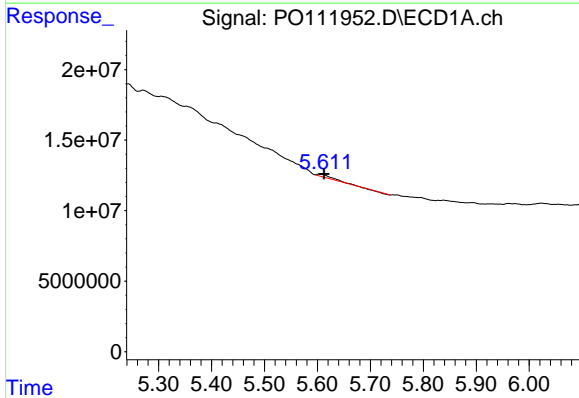
R.T.: 4.964 min
 Delta R.T.: 0.003 min
 Response: 27422345
 Conc: 173.34 ng/ml

Instrument :
 ECD_O
 ClientSampleId :
 TP-59



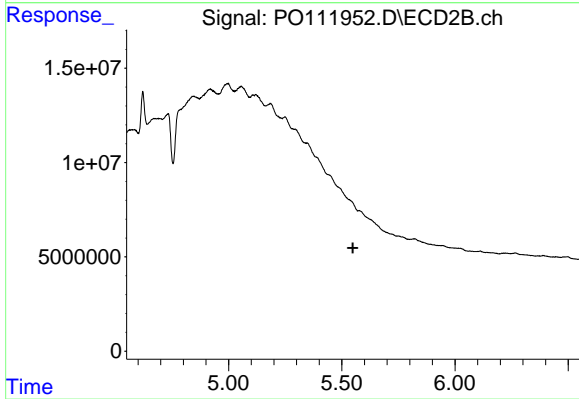
#19 AR-1242-4

R.T.: 5.024 min
 Delta R.T.: -0.004 min
 Response: 712263
 Conc: 5.81 ng/ml



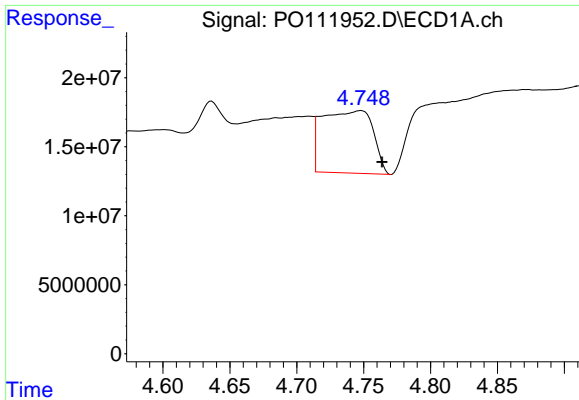
#20 AR-1242-5

R.T.: 5.606 min
 Delta R.T.: -0.007 min
 Response: 3291302
 Conc: 19.68 ng/ml



#20 AR-1242-5

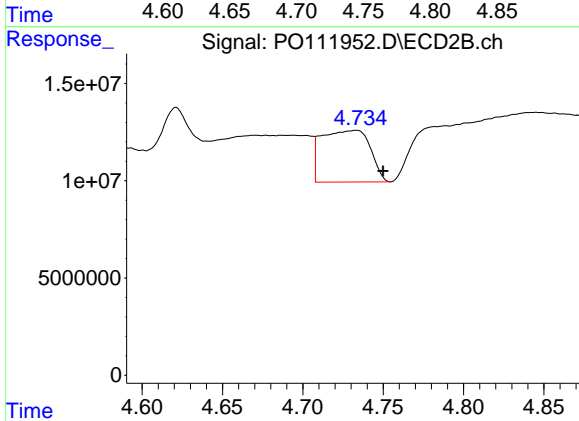
R.T.: 5.578 min
 Delta R.T.: 0.029 min
 Response: -4015502
 Conc: N.D.



#21 AR-1248-1

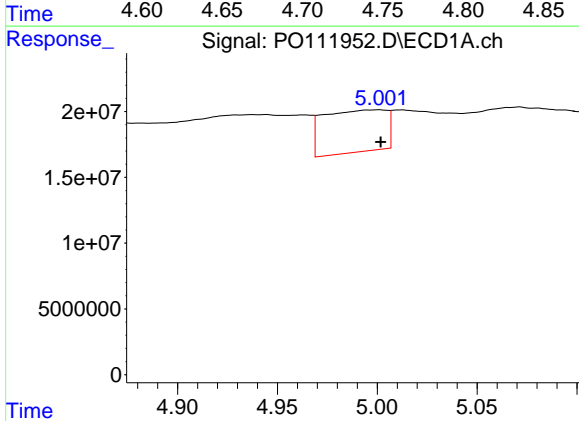
R.T.: 4.748 min
 Delta R.T.: -0.016 min
 Response: 119935101
 Conc: 743.71 ng/ml

Instrument :
 ECD_O
 ClientSampleId :
 TP-59



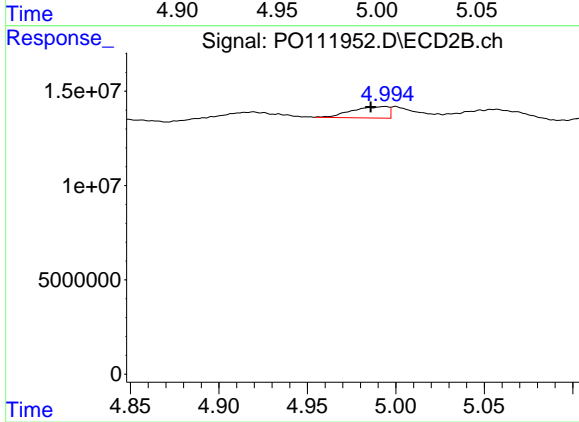
#21 AR-1248-1

R.T.: 4.734 min
 Delta R.T.: -0.016 min
 Response: 56095909
 Conc: 420.87 ng/ml



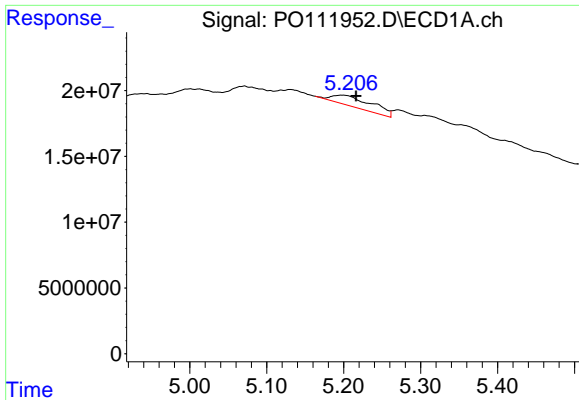
#22 AR-1248-2

R.T.: 5.001 min
 Delta R.T.: 0.000 min
 Response: 70289612
 Conc: 326.01 ng/ml



#22 AR-1248-2

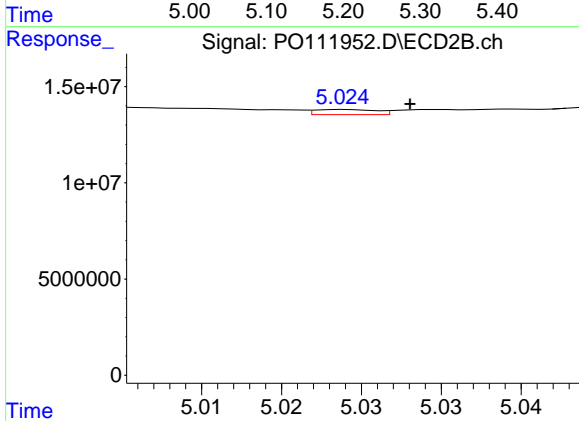
R.T.: 4.994 min
 Delta R.T.: 0.008 min
 Response: 8658031
 Conc: 48.60 ng/ml



#23 AR-1248-3

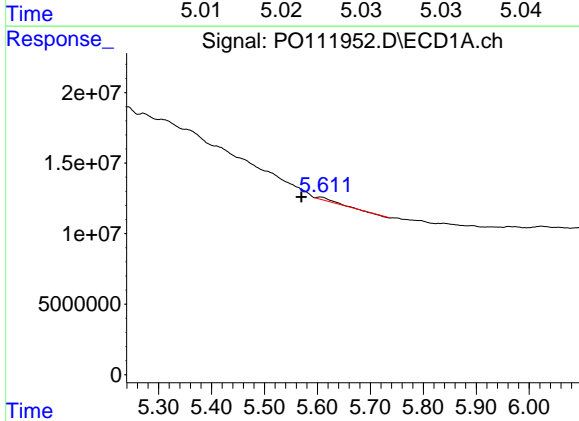
R.T.: 5.199 min
 Delta R.T.: -0.017 min
 Response: 29496322
 Conc: 109.35 ng/ml

Instrument :
 ECD_O
 ClientSampleId :
 TP-59



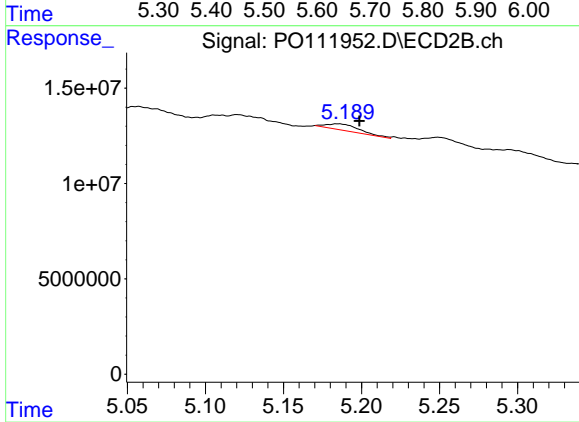
#23 AR-1248-3

R.T.: 5.024 min
 Delta R.T.: -0.004 min
 Response: 712263
 Conc: 3.76 ng/ml



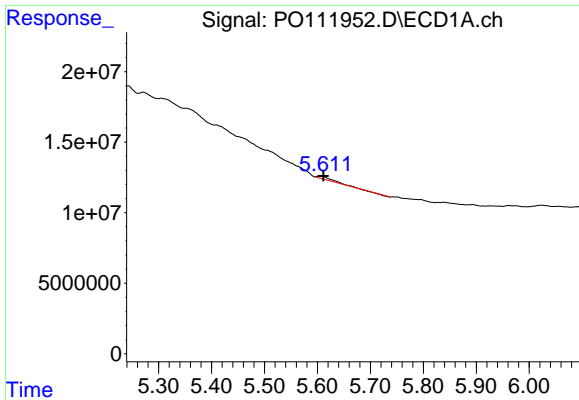
#24 AR-1248-4

R.T.: 5.606 min
 Delta R.T.: 0.036 min
 Response: 3291302
 Conc: 8.23 ng/ml



#24 AR-1248-4

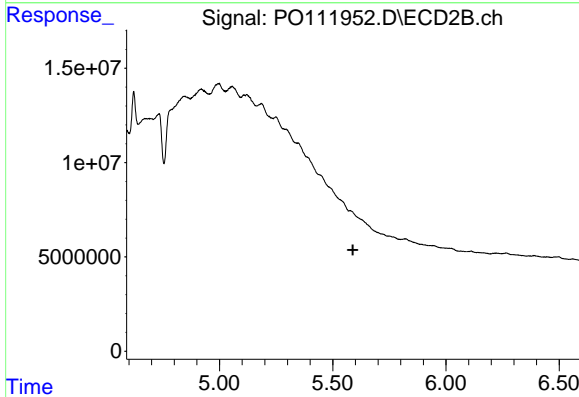
R.T.: 5.184 min
 Delta R.T.: -0.015 min
 Response: 4779154
 Conc: 20.93 ng/ml



#25 AR-1248-5

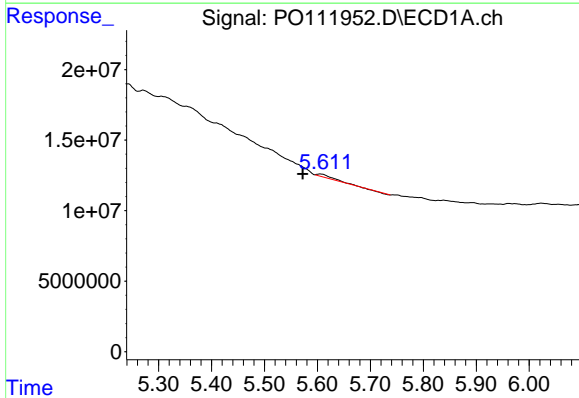
R.T.: 5.606 min
 Delta R.T.: -0.006 min
 Response: 3291302
 Conc: 11.72 ng/ml

Instrument :
 ECD_O
 ClientSampleId :
 TP-59



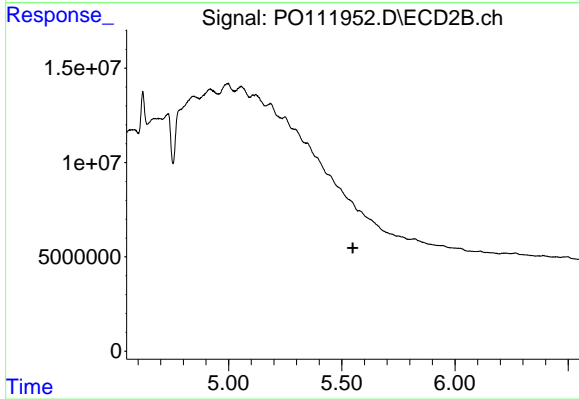
#25 AR-1248-5

R.T.: 5.578 min
 Delta R.T.: -0.011 min
 Response: -4015502
 Conc: N.D.



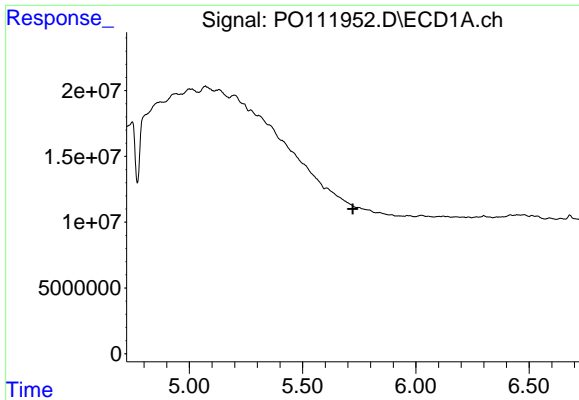
#26 AR-1254-1

R.T.: 5.606 min
 Delta R.T.: 0.034 min
 Response: 3291302
 Conc: 7.74 ng/ml



#26 AR-1254-1

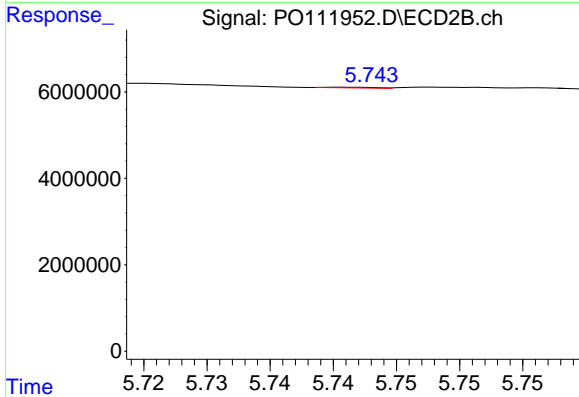
R.T.: 5.578 min
 Delta R.T.: 0.029 min
 Response: -4015502
 Conc: N.D.



#27 AR-1254-2

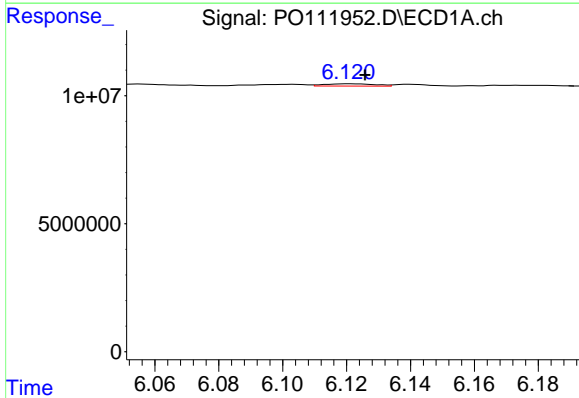
R.T.: 0.000 min
 Exp R.T.: 5.722 min
 Response: 0
 Conc: N.D.

Instrument :
 ECD_O
 ClientSampleId :
 TP-59



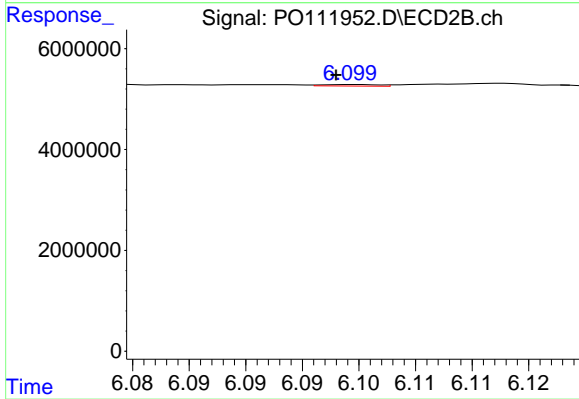
#27 AR-1254-2

R.T.: 5.741 min
 Delta R.T.: 0.044 min
 Response: 45367
 Conc: 0.16 ng/ml



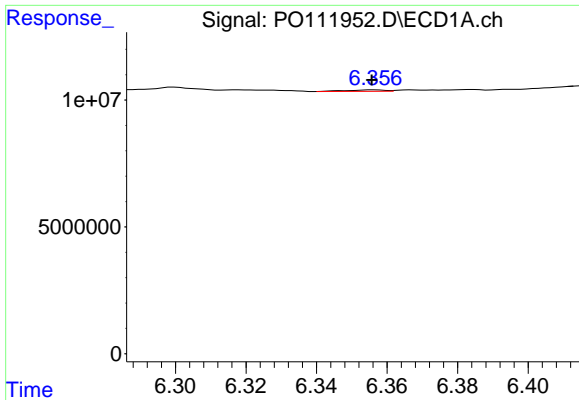
#28 AR-1254-3

R.T.: 6.121 min
 Delta R.T.: -0.005 min
 Response: 961377
 Conc: 1.68 ng/ml



#28 AR-1254-3

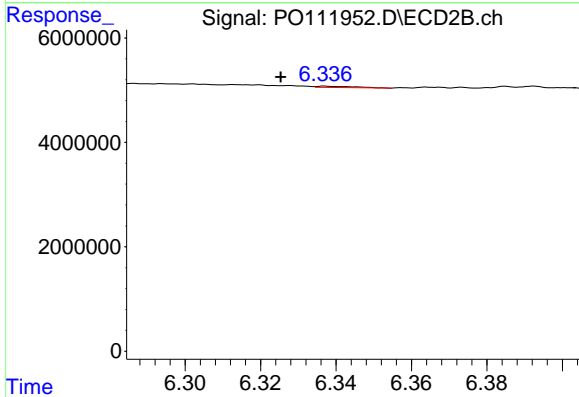
R.T.: 6.100 min
 Delta R.T.: 0.002 min
 Response: 103250
 Conc: 0.25 ng/ml



#29 AR-1254-4

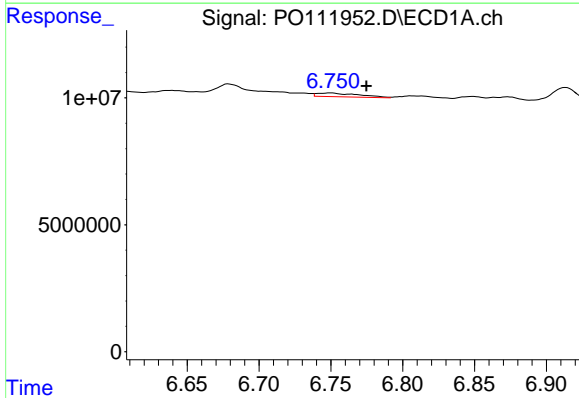
R.T.: 6.357 min
 Delta R.T.: 0.000 min
 Response: 411862
 Conc: 1.18 ng/ml

Instrument :
 ECD_O
 ClientSampleId :
 TP-59



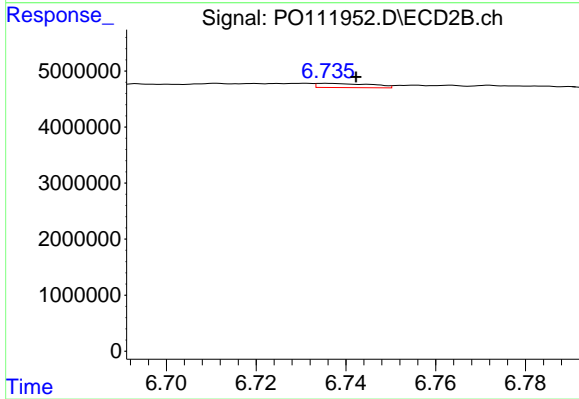
#29 AR-1254-4

R.T.: 6.337 min
 Delta R.T.: 0.012 min
 Response: 170937
 Conc: 0.75 ng/ml



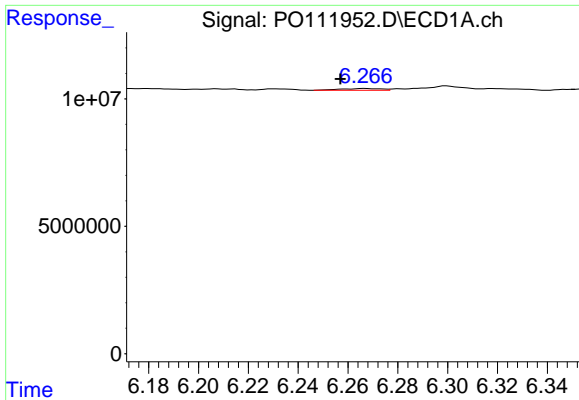
#30 AR-1254-5

R.T.: 6.750 min
 Delta R.T.: -0.025 min
 Response: 2927040
 Conc: 5.72 ng/ml



#30 AR-1254-5

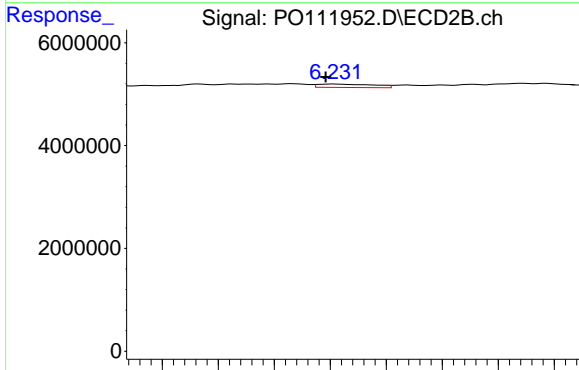
R.T.: 6.736 min
 Delta R.T.: -0.006 min
 Response: 630957
 Conc: 1.94 ng/ml



#31 AR-1260-1

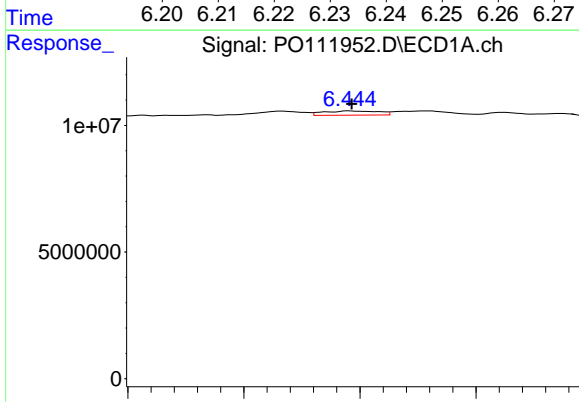
R.T.: 6.267 min
 Delta R.T.: 0.010 min
 Response: 739543
 Conc: 2.08 ng/ml

Instrument :
 ECD_O
 ClientSampleId :
 TP-59



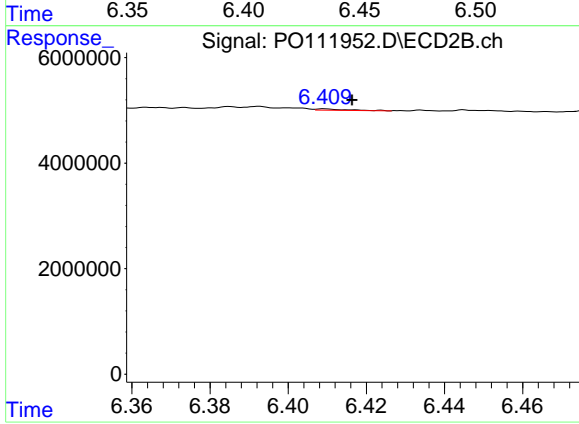
#31 AR-1260-1

R.T.: 6.231 min
 Delta R.T.: 0.002 min
 Response: 451745
 Conc: 1.80 ng/ml



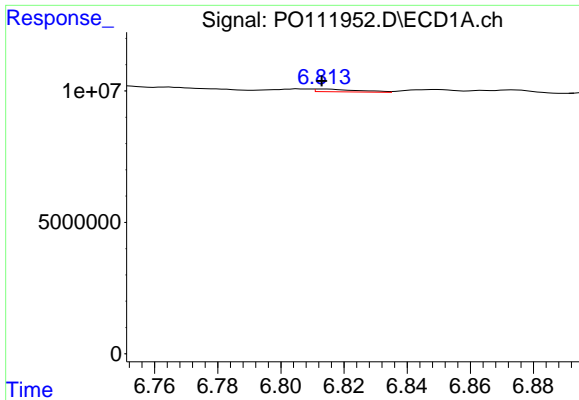
#32 AR-1260-2

R.T.: 6.445 min
 Delta R.T.: -0.001 min
 Response: 2755499
 Conc: 5.83 ng/ml



#32 AR-1260-2

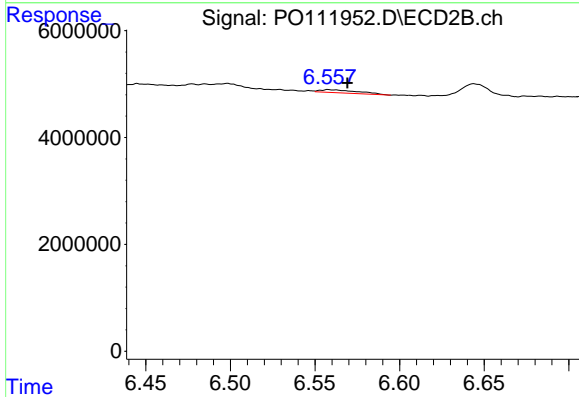
R.T.: 6.409 min
 Delta R.T.: -0.007 min
 Response: 140091
 Conc: 0.48 ng/ml



#33 AR-1260-3

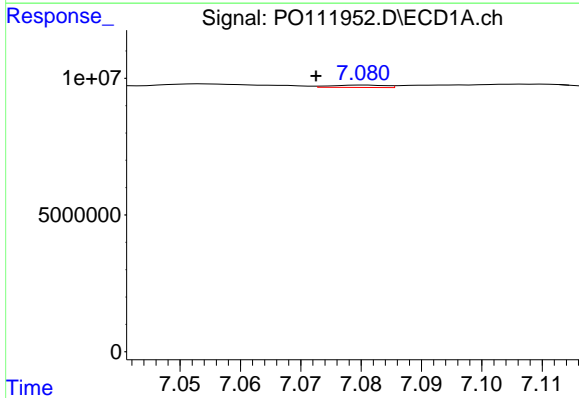
R.T.: 6.813 min
 Delta R.T.: 0.000 min
 Response: 962105
 Conc: 2.27 ng/ml

Instrument :
 ECD_O
 ClientSampleId :
 TP-59



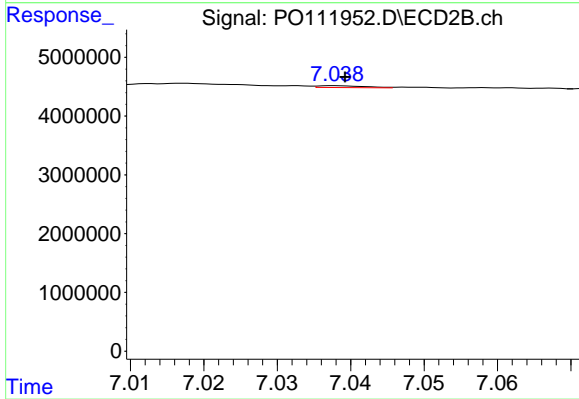
#33 AR-1260-3

R.T.: 6.558 min
 Delta R.T.: -0.011 min
 Response: 866185
 Conc: 3.24 ng/ml



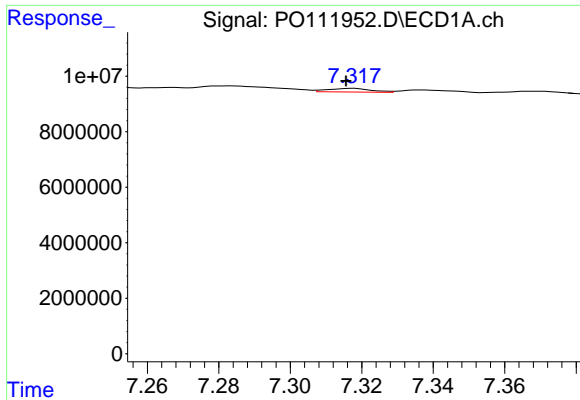
#34 AR-1260-4

R.T.: 7.081 min
 Delta R.T.: 0.008 min
 Response: 522093
 Conc: 1.66 ng/ml



#34 AR-1260-4

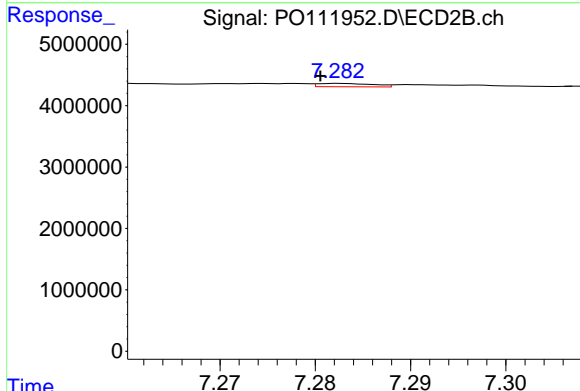
R.T.: 7.038 min
 Delta R.T.: -0.001 min
 Response: 136919
 Conc: 0.72 ng/ml



#35 AR-1260-5

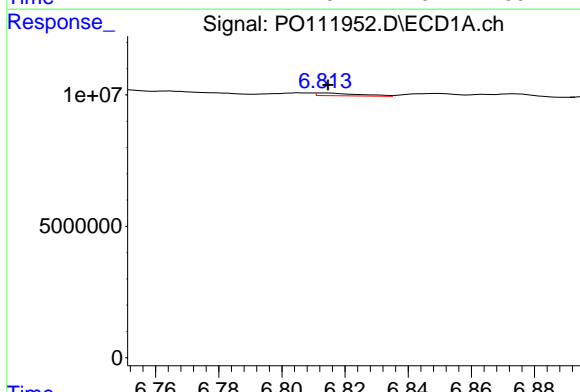
R.T.: 7.318 min
 Delta R.T.: 0.002 min
 Response: 1094542
 Conc: 1.33 ng/ml

Instrument : ECD_O
 ClientSampleId : TP-59



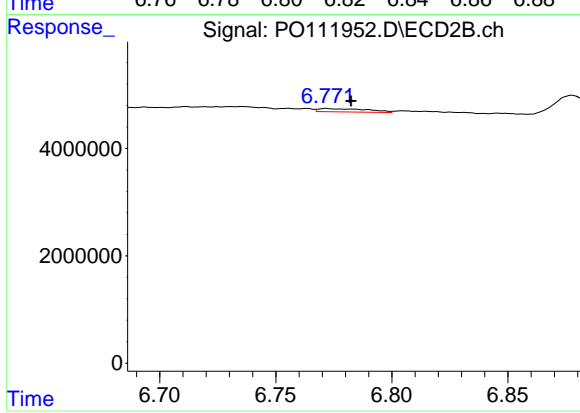
#35 AR-1260-5

R.T.: 7.283 min
 Delta R.T.: 0.002 min
 Response: 219417
 Conc: 0.52 ng/ml



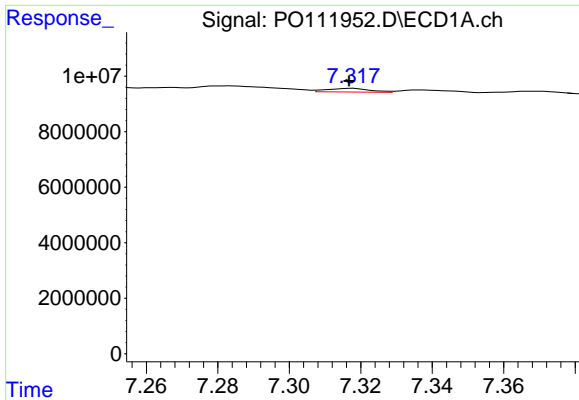
#36 AR-1262-1

R.T.: 6.813 min
 Delta R.T.: -0.001 min
 Response: 962105
 Conc: 1.58 ng/ml



#36 AR-1262-1

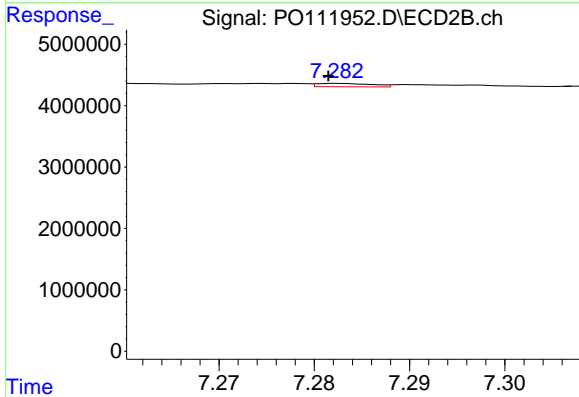
R.T.: 6.772 min
 Delta R.T.: -0.011 min
 Response: 882129
 Conc: 2.61 ng/ml



#37 AR-1262-2

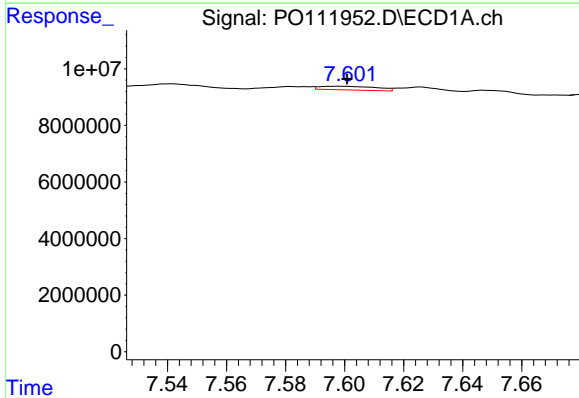
R.T.: 7.318 min
 Delta R.T.: 0.000 min
 Response: 1094542
 Conc: 1.16 ng/ml

Instrument :
 ECD_O
 ClientSampleId :
 TP-59



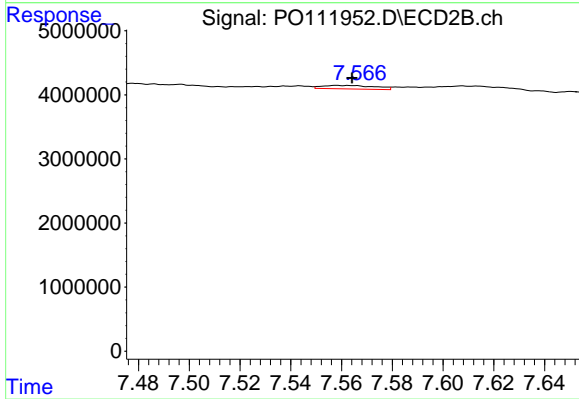
#37 AR-1262-2

R.T.: 7.283 min
 Delta R.T.: 0.001 min
 Response: 219417
 Conc: 0.47 ng/ml



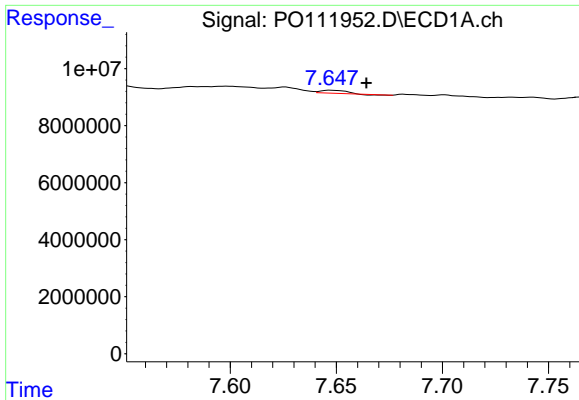
#38 AR-1262-3

R.T.: 7.598 min
 Delta R.T.: -0.003 min
 Response: 1764730
 Conc: 4.45 ng/ml



#38 AR-1262-3

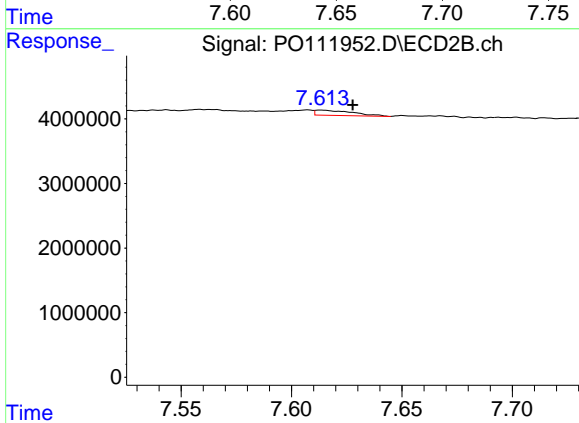
R.T.: 7.558 min
 Delta R.T.: -0.006 min
 Response: 804314
 Conc: 4.84 ng/ml



#39 AR-1262-4

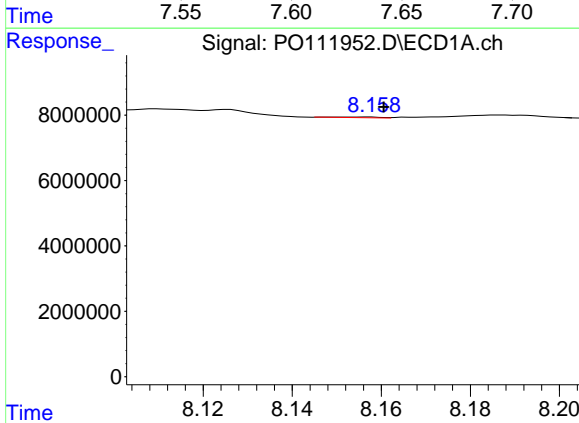
R.T.: 7.648 min
 Delta R.T.: -0.017 min
 Response: 807399
 Conc: 1.23 ng/ml

Instrument :
 ECD_O
 ClientSampleId :
 TP-59



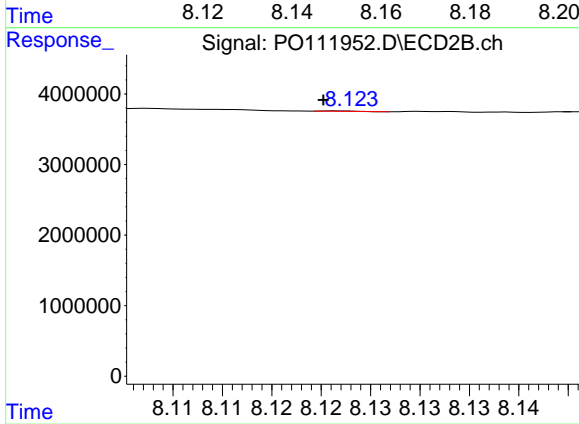
#39 AR-1262-4

R.T.: 7.613 min
 Delta R.T.: -0.014 min
 Response: 933463
 Conc: 3.37 ng/ml



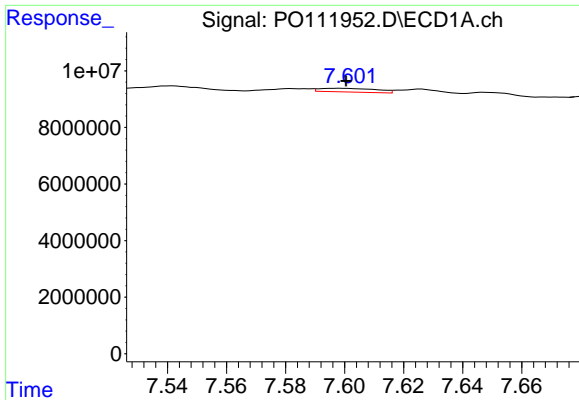
#40 AR-1262-5

R.T.: 8.156 min
 Delta R.T.: -0.004 min
 Response: 152625
 Conc: 0.50 ng/ml



#40 AR-1262-5

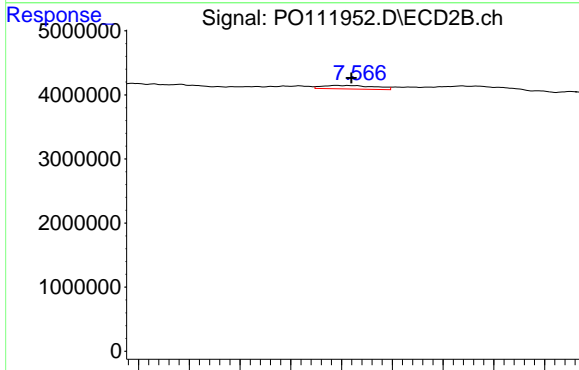
R.T.: 8.122 min
 Delta R.T.: 0.001 min
 Response: 13899
 Conc: 0.14 ng/ml



#41 AR-1268-1

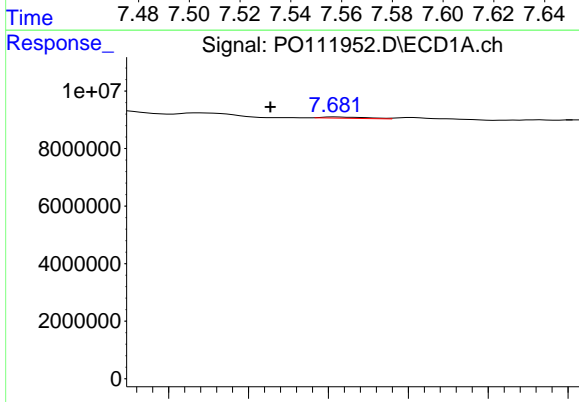
R.T.: 7.598 min
 Delta R.T.: -0.002 min
 Response: 1764730
 Conc: 1.57 ng/ml

Instrument : ECD_O
 ClientSampleId : TP-59



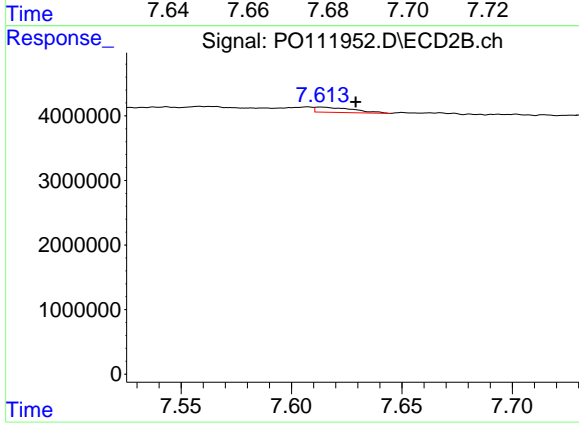
#41 AR-1268-1

R.T.: 7.558 min
 Delta R.T.: -0.006 min
 Response: 804314
 Conc: 1.68 ng/ml



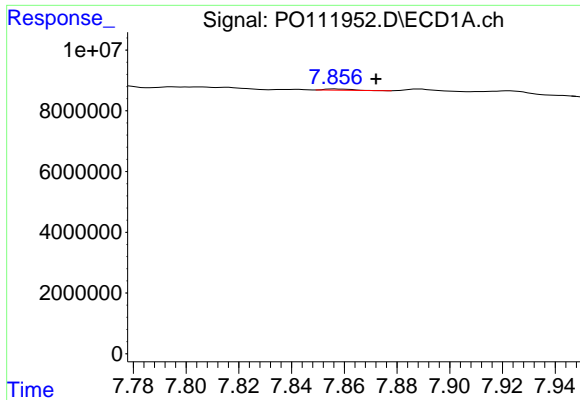
#42 AR-1268-2

R.T.: 7.682 min
 Delta R.T.: 0.016 min
 Response: 349860
 Conc: 0.36 ng/ml



#42 AR-1268-2

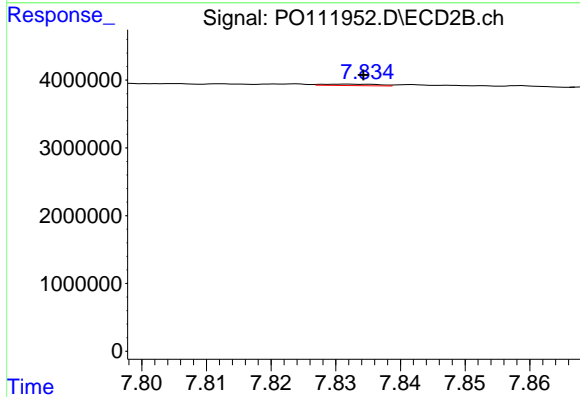
R.T.: 7.613 min
 Delta R.T.: -0.016 min
 Response: 933463
 Conc: 2.24 ng/ml



#43 AR-1268-3

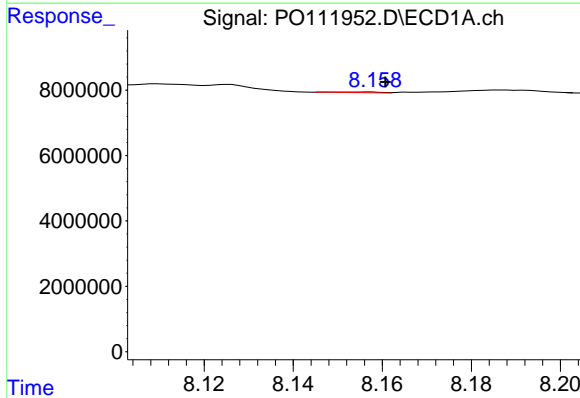
R.T.: 7.856 min
 Delta R.T.: -0.016 min
 Response: 292124
 Conc: 0.36 ng/ml

Instrument :
 ECD_O
 ClientSampleId :
 TP-59



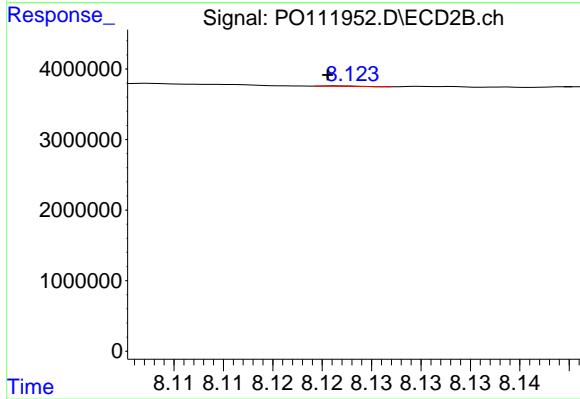
#43 AR-1268-3

R.T.: 7.832 min
 Delta R.T.: -0.003 min
 Response: 129691
 Conc: 0.41 ng/ml



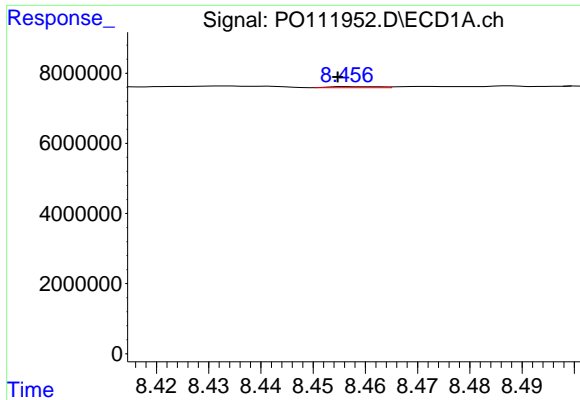
#44 AR-1268-4

R.T.: 8.156 min
 Delta R.T.: -0.004 min
 Response: 152625
 Conc: 0.44 ng/ml



#44 AR-1268-4

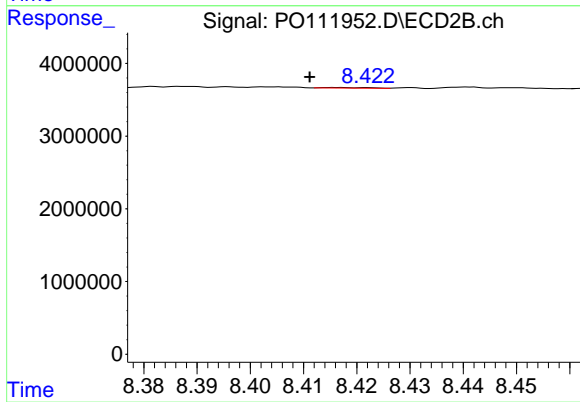
R.T.: 8.122 min
 Delta R.T.: 0.001 min
 Response: 13899
 Conc: 0.12 ng/ml



#45 AR-1268-5

R.T.: 8.457 min
 Delta R.T.: 0.002 min
 Response: 189896
 Conc: 0.09 ng/ml

Instrument :
 ECD_O
 ClientSampleId :
 TP-59



#45 AR-1268-5

R.T.: 8.416 min
 Delta R.T.: 0.005 min
 Response: 44243
 Conc: 0.06 ng/ml