

Data Path : Z:\pestpcbsrv\HPCHEM1\ECD_O\Data\P0070125\
 Data File : P0111953.D
 Signal(s) : Signal #1: ECD1A.ch Signal #2: ECD2B.ch
 Acq On : 01 Jul 2025 23:24
 Operator : YP/AJ
 Sample : Q2459-01
 Misc :
 ALS Vial : 30 Sample Multiplier: 1

Instrument :
 ECD_O
 ClientSampleId :
 TP-1

Integration File signal 1: autoint1.e
 Integration File signal 2: autoint2.e
 Quant Time: Jul 02 01:52:43 2025
 Quant Method : Z:\pestpcbsrv\HPCHEM1\ECD_O\methods\P0061125.M
 Quant Title : GC EXTRACTABLES
 QLast Update : Thu Jun 12 06:25:26 2025
 Response via : Initial Calibration
 Integrator: ChemStation

Volume Inj. : 2 µl
 Signal #1 Phase : ZB-MR1 Signal #2 Phase: ZB-MR2
 Signal #1 Info : 30Mx0.32mmx 0.50µ Signal #2 Info : 30M x 0.32mm x 0.25µm

Compound	RT#1	RT#2	Resp#1	Resp#2	ng/ml	ng/ml
System Monitoring Compounds						
1) SA Tetrachlo...	3.675	3.672	120.5E6	110.3E6	20.927	19.645
2) SA Decachlor...	8.708	8.656	79063908	31698732	15.062	17.832
Target Compounds						
3) L1 AR-1016-1	4.760	4.756	1898842	819322	7.960	4.164 #
4) L1 AR-1016-2	4.760	4.777	1898842	1528138	5.707	5.364
5) L1 AR-1016-3	4.834	4.942	1308429	145610	5.685	0.969 #
6) L1 AR-1016-4	4.961	4.982	2146435	1098646	11.573	9.021
7) L1 AR-1016-5	5.206	5.188	3153373	1625324	16.895	10.209 #
8) L2 AR-1221-1	3.892	3.889	1182012	1196986	13.574	16.030
9) L2 AR-1221-2	3.979	3.970	5208757	3344503	81.174	59.778 #
10) L2 AR-1221-3	4.051	4.042	586049	634812	3.005	3.694
11) L3 AR-1232-1	4.051	4.042	586049	634812	3.862	4.773
12) L3 AR-1232-2	4.547	4.777	844857	1528138	9.799	11.595
13) L3 AR-1232-3	4.760	4.942	1898842	145610	11.658	2.107 #
14) L3 AR-1232-4	4.961	5.052	2146435	532283	24.666	8.800 #
15) L3 AR-1232-5	5.009	5.188	782880	1625324	13.837	24.472 #
16) L4 AR-1242-1	4.760	4.756	1898842	819322	9.426	5.034 #
17) L4 AR-1242-2	4.760	4.777	1898842	1528138	6.739	6.473
18) L4 AR-1242-3	4.834	4.942	1308429	145610	6.581	1.159 #
19) L4 AR-1242-4	4.961	5.052	2146435	532283	13.568	4.343 #
20) L4 AR-1242-5	5.619	5.544	3394239	1736690	20.298	11.586 #
21) L5 AR-1248-1	4.760	4.756	1898842	819322	11.775	6.147 #
22) L5 AR-1248-2	4.998	4.982	2610260	1098646	12.107	6.167 #
23) L5 AR-1248-3	5.206	5.052	3153373	532283	11.690	2.810 #
24) L5 AR-1248-4	5.570	5.188	9012601	1625324	22.543	7.119 #
25) L5 AR-1248-5	5.619	5.593	3394239	3077239	12.087	14.131
26) L6 AR-1254-1	5.570	5.544	9012601	1736690	21.203	5.377 #
27) L6 AR-1254-2	5.701	5.721	2998245	2558765	7.900	9.161
28) L6 AR-1254-3	6.112	6.111	1786788	5085603	3.127	12.136 #
29) L6 AR-1254-4	6.379	6.345	1728550	753126	4.955	3.306 #
30) L6 AR-1254-5	6.766	6.731	6481989	1190214	12.657	3.656 #
31) L7 AR-1260-1	6.253	6.229	7399651	3443570	20.825	13.724 #
32) L7 AR-1260-2	6.464	6.437	1424578	169334	3.015	0.576 #
33) L7 AR-1260-3	6.812	6.567	5008278	709073	11.793	2.654 #
34) L7 AR-1260-4	7.046	7.017	3008278	1110343	9.567	5.841 #
35) L7 AR-1260-5	7.304	7.276	2609053	1168876	3.167	2.750
36) L8 AR-1262-1	6.812	6.776	5008278	1132062	8.212	3.353 #
37) L8 AR-1262-2	7.304	7.276	2609053	1168876	2.771	2.510
38) L8 AR-1262-3	7.601	7.559	4528184	4662563	11.417	28.040 #
39) L8 AR-1262-4	7.651	7.674f	2786289	-36901	4.241	N.D. #
40) L8 AR-1262-5	8.209f	8.065f	3729542	116884	12.241	1.150 #
41) L9 AR-1268-1	7.601	7.559	4528184	4662563	4.019	9.746 #

Data Path : Z:\pestpcbsrv\HPCHEM1\ECD_0\Data\P0070125\
 Data File : P0111953.D
 Signal(s) : Signal #1: ECD1A.ch Signal #2: ECD2B.ch
 Acq On : 01 Jul 2025 23:24
 Operator : YP/AJ
 Sample : Q2459-01
 Misc :
 ALS Vial : 30 Sample Multiplier: 1

Instrument :
 ECD_0
 ClientSampleId :
 TP-1

Integration File signal 1: autoint1.e
 Integration File signal 2: autoint2.e
 Quant Time: Jul 02 01:52:43 2025
 Quant Method : Z:\pestpcbsrv\HPCHEM1\ECD_0\methods\P0061125.M
 Quant Title : GC EXTRACTABLES
 QLast Update : Thu Jun 12 06:25:26 2025
 Response via : Initial Calibration
 Integrator: ChemStation

Volume Inj. : 2 µl
 Signal #1 Phase : ZB-MR1 Signal #2 Phase: ZB-MR2
 Signal #1 Info : 30Mx0.32mmx 0.50µ Signal #2 Info : 30M x 0.32mm x 0.25µm

	Compound	RT#1	RT#2	Resp#1	Resp#2	ng/ml	ng/ml
42)	L9 AR-1268-2	7.651	7.674f	2786289	-36901	2.851	N.D. #
43)	L9 AR-1268-3	7.928f	7.862	183915	61432	0.224	0.194
44)	L9 AR-1268-4	8.209f	8.065f	3729542	116884	10.842	1.011 #
45)	L9 AR-1268-5	8.450	8.399	1528314	135473	0.688	0.187 #

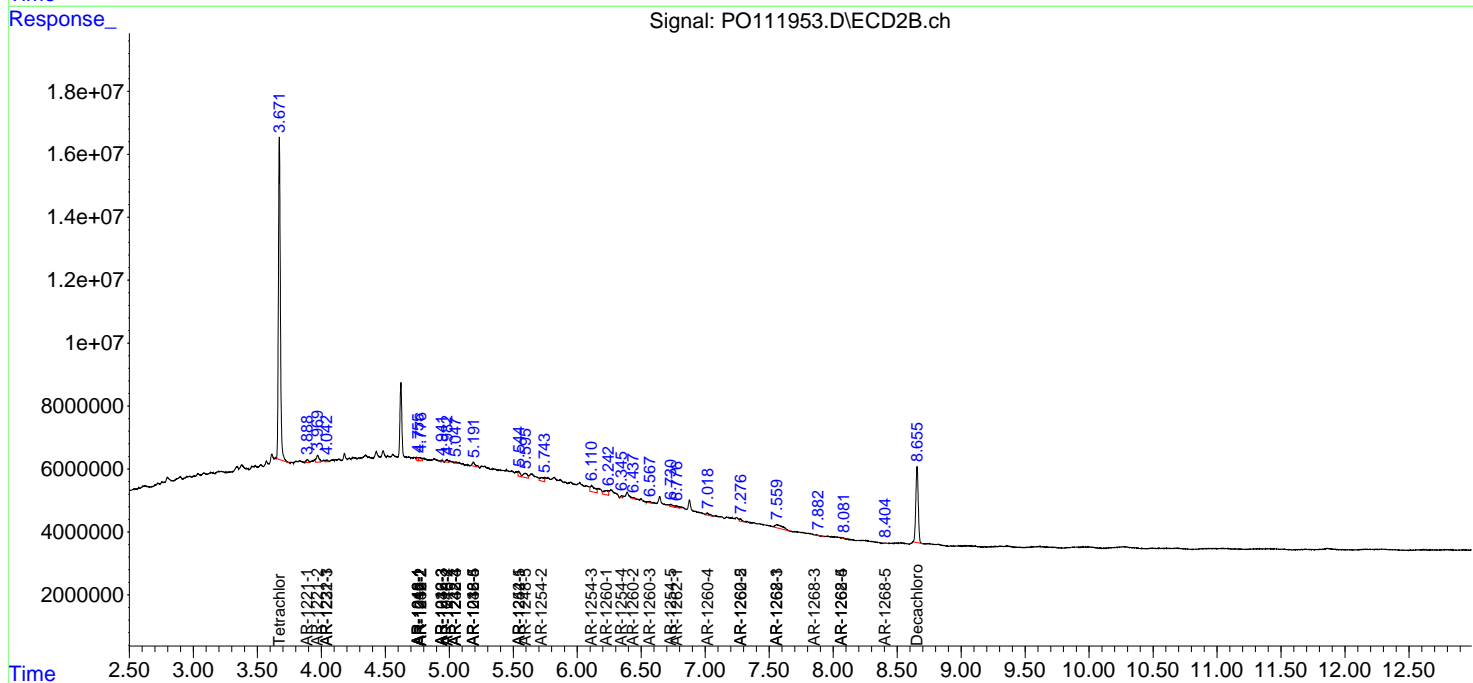
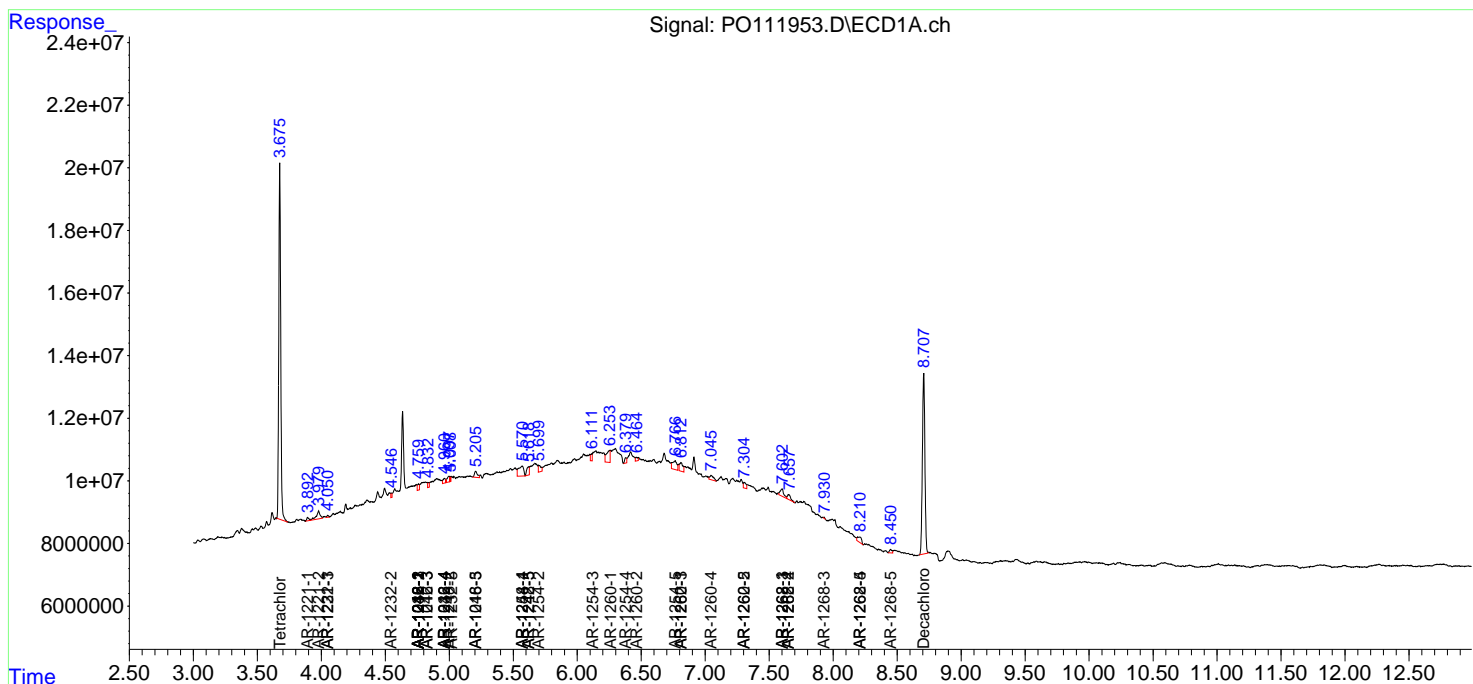
(f)=RT Delta > 1/2 Window (#)=Amounts differ by > 25% (m)=manual int.

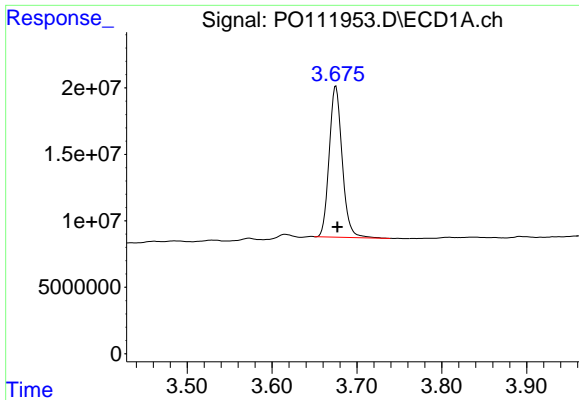
Data Path : Z:\pestpcbsrv\HPCHEM1\ECD_O\Data\PO070125\
 Data File : PO111953.D
 Signal(s) : Signal #1: ECD1A.ch Signal #2: ECD2B.ch
 Acq On : 01 Jul 2025 23:24
 Operator : YP/AJ
 Sample : Q2459-01
 Misc :
 ALS Vial : 30 Sample Multiplier: 1

Instrument :
 ECD_O
 ClientSampleId :
 TP-1

Integration File signal 1: autoint1.e
 Integration File signal 2: autoint2.e
 Quant Time: Jul 02 01:52:43 2025
 Quant Method : Z:\pestpcbsrv\HPCHEM1\ECD_O\methods\PO061125.M
 Quant Title : GC EXTRACTABLES
 QLast Update : Thu Jun 12 06:25:26 2025
 Response via : Initial Calibration
 Integrator: ChemStation

Volume Inj. : 2 µl
 Signal #1 Phase : ZB-MR1 Signal #2 Phase: ZB-MR2
 Signal #1 Info : 30Mx0.32mmx 0.50µ Signal #2 Info : 30M x 0.32mm x 0.25µm

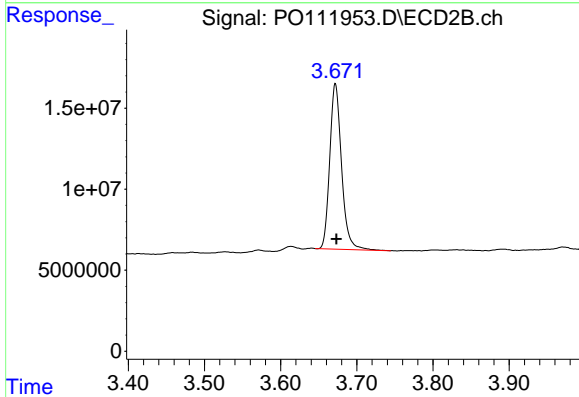




#1 Tetrachloro-m-xylene

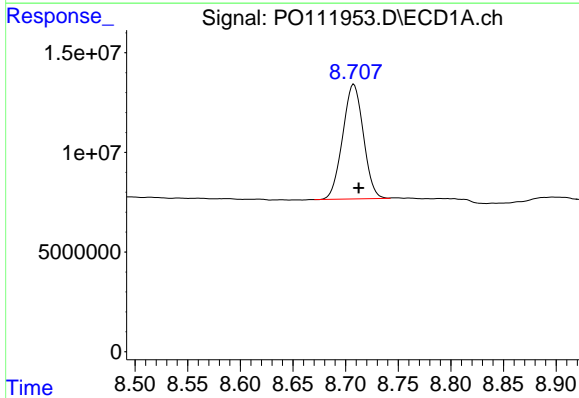
R.T.: 3.675 min
 Delta R.T.: -0.002 min
 Response: 120526080
 Conc: 20.93 ng/ml

Instrument :
 ECD_O
 ClientSampleId :
 TP-1



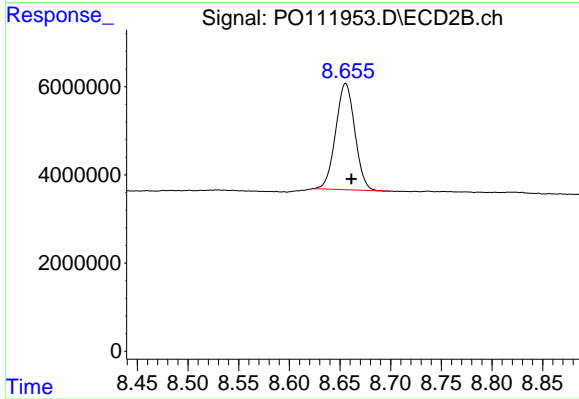
#1 Tetrachloro-m-xylene

R.T.: 3.672 min
 Delta R.T.: -0.001 min
 Response: 110348879
 Conc: 19.64 ng/ml



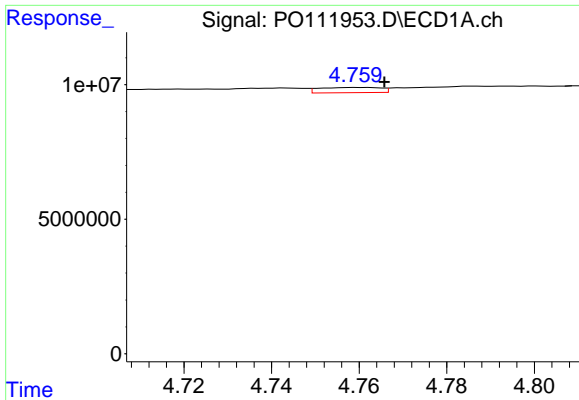
#2 Decachlorobiphenyl

R.T.: 8.708 min
 Delta R.T.: -0.005 min
 Response: 79063908
 Conc: 15.06 ng/ml



#2 Decachlorobiphenyl

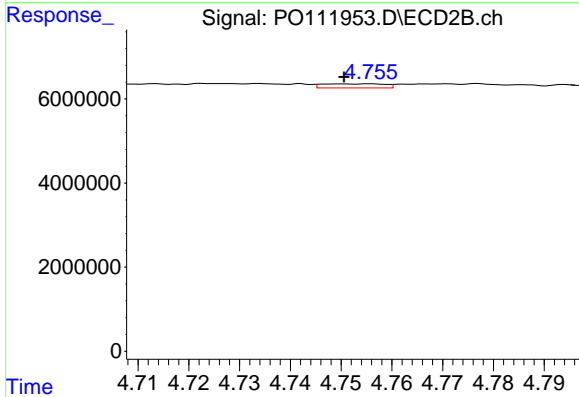
R.T.: 8.656 min
 Delta R.T.: -0.006 min
 Response: 31698732
 Conc: 17.83 ng/ml



#3 AR-1016-1

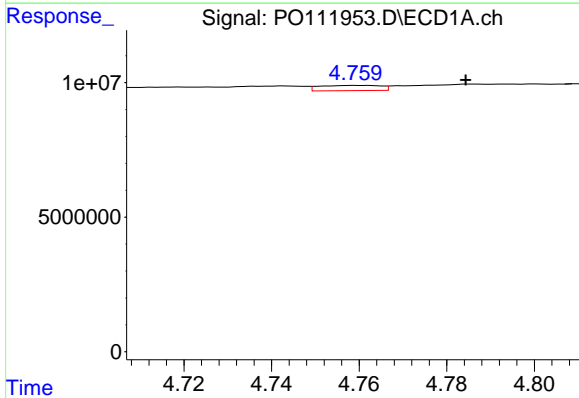
R.T.: 4.760 min
 Delta R.T.: -0.006 min
 Response: 1898842
 Conc: 7.96 ng/ml

Instrument :
 ECD_O
 ClientSampleId :
 TP-1



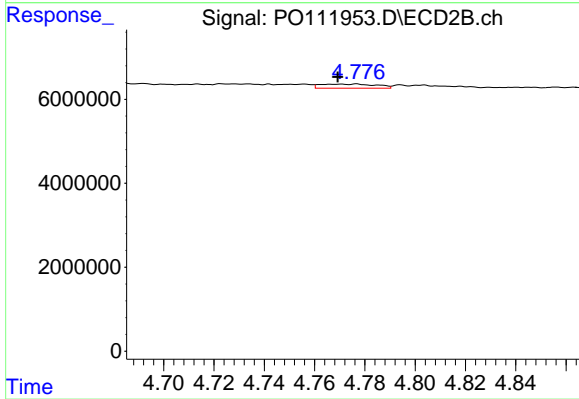
#3 AR-1016-1

R.T.: 4.756 min
 Delta R.T.: 0.005 min
 Response: 819322
 Conc: 4.16 ng/ml



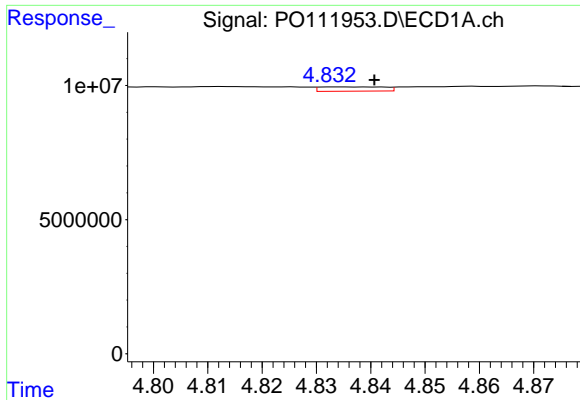
#4 AR-1016-2

R.T.: 4.760 min
 Delta R.T.: -0.024 min
 Response: 1898842
 Conc: 5.71 ng/ml



#4 AR-1016-2

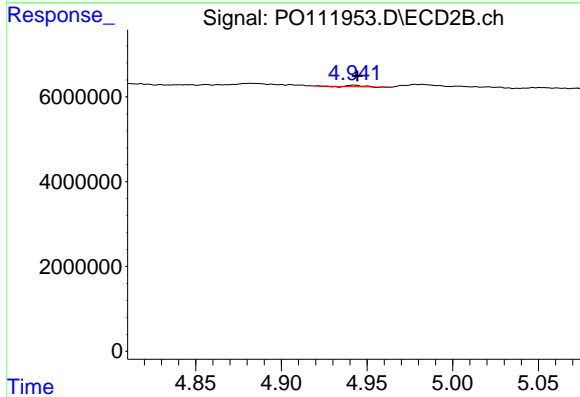
R.T.: 4.777 min
 Delta R.T.: 0.008 min
 Response: 1528138
 Conc: 5.36 ng/ml



#5 AR-1016-3

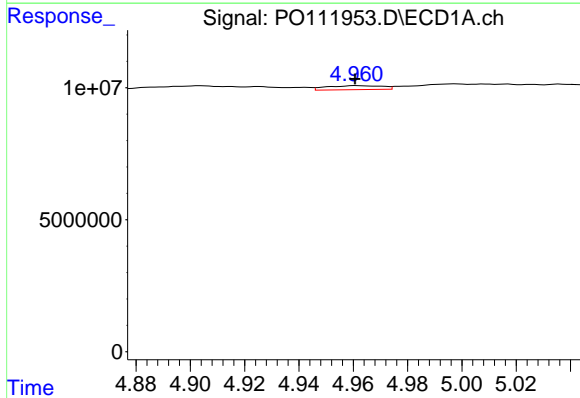
R.T.: 4.834 min
 Delta R.T.: -0.007 min
 Response: 1308429
 Conc: 5.69 ng/ml

Instrument :
 ECD_O
 ClientSampleId :
 TP-1



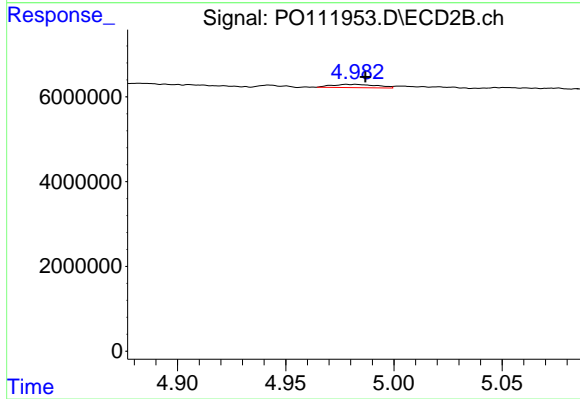
#5 AR-1016-3

R.T.: 4.942 min
 Delta R.T.: -0.002 min
 Response: 145610
 Conc: 0.97 ng/ml



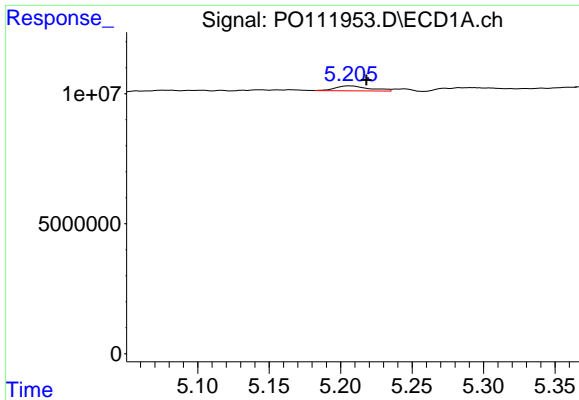
#6 AR-1016-4

R.T.: 4.961 min
 Delta R.T.: 0.000 min
 Response: 2146435
 Conc: 11.57 ng/ml



#6 AR-1016-4

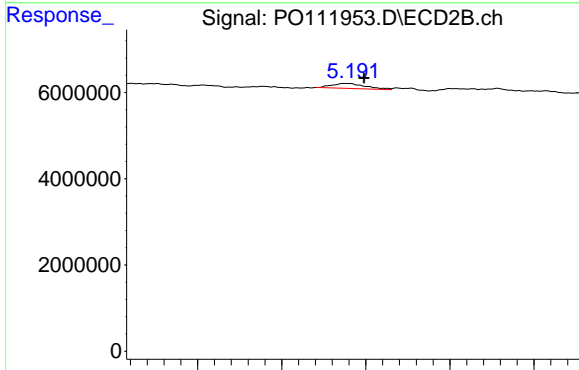
R.T.: 4.982 min
 Delta R.T.: -0.005 min
 Response: 1098646
 Conc: 9.02 ng/ml



#7 AR-1016-5

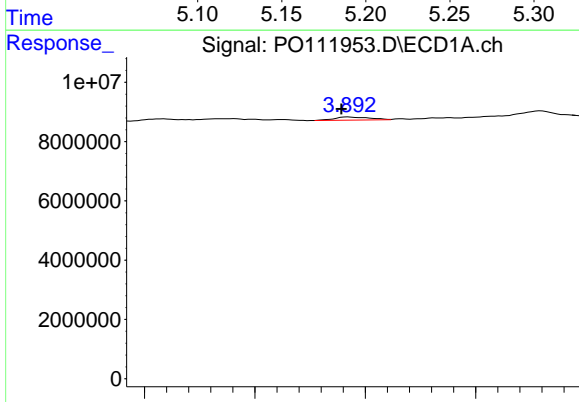
R.T.: 5.206 min
 Delta R.T.: -0.012 min
 Response: 3153373
 Conc: 16.90 ng/ml

Instrument :
 ECD_O
 ClientSampleId :
 TP-1



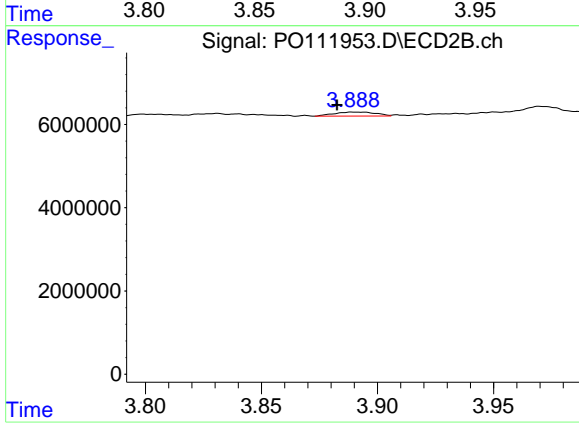
#7 AR-1016-5

R.T.: 5.188 min
 Delta R.T.: -0.011 min
 Response: 1625324
 Conc: 10.21 ng/ml



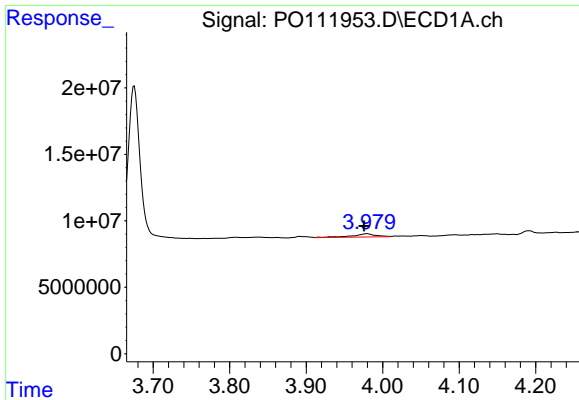
#8 AR-1221-1

R.T.: 3.892 min
 Delta R.T.: 0.003 min
 Response: 1182012
 Conc: 13.57 ng/ml



#8 AR-1221-1

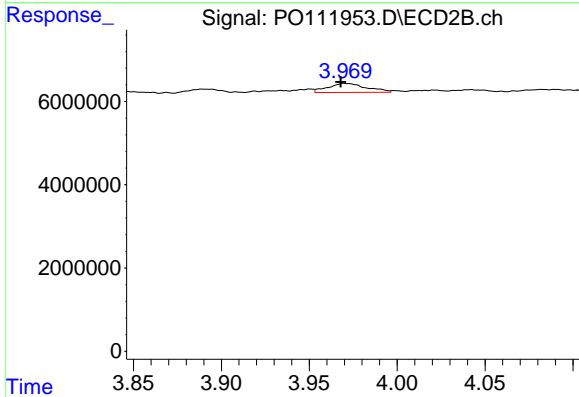
R.T.: 3.889 min
 Delta R.T.: 0.006 min
 Response: 1196986
 Conc: 16.03 ng/ml



#9 AR-1221-2

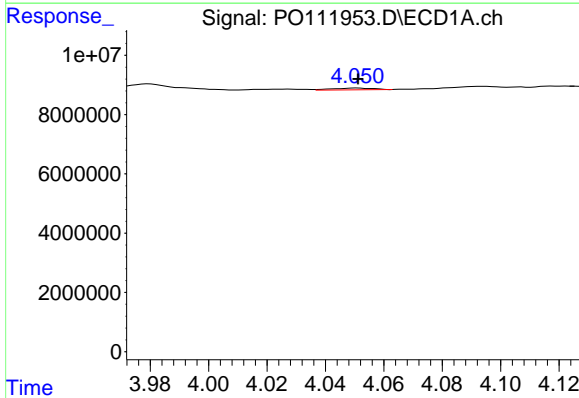
R.T.: 3.979 min
 Delta R.T.: 0.004 min
 Response: 5208757
 Conc: 81.17 ng/ml

Instrument :
 ECD_O
 ClientSampleId :
 TP-1



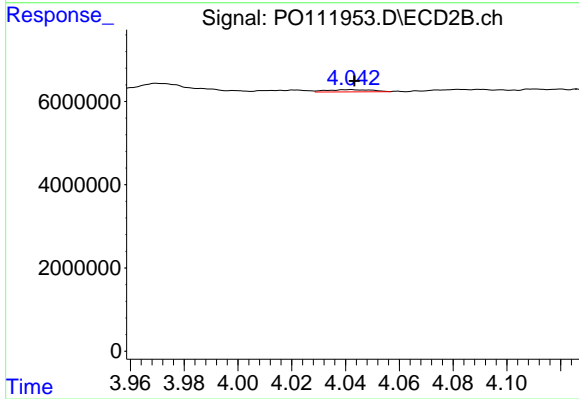
#9 AR-1221-2

R.T.: 3.970 min
 Delta R.T.: 0.002 min
 Response: 3344503
 Conc: 59.78 ng/ml



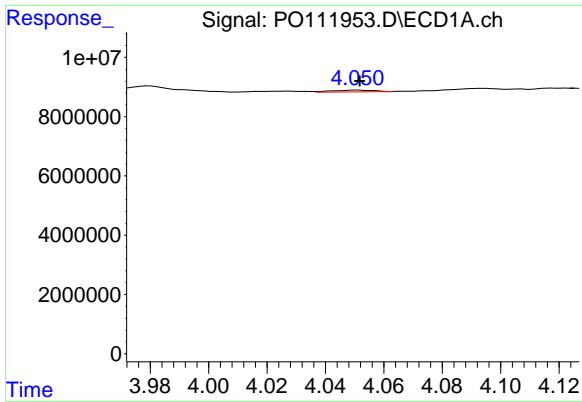
#10 AR-1221-3

R.T.: 4.051 min
 Delta R.T.: 0.000 min
 Response: 586049
 Conc: 3.00 ng/ml



#10 AR-1221-3

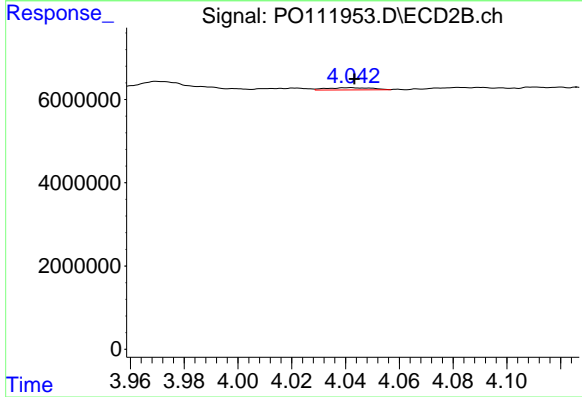
R.T.: 4.042 min
 Delta R.T.: -0.001 min
 Response: 634812
 Conc: 3.69 ng/ml



#11 AR-1232-1

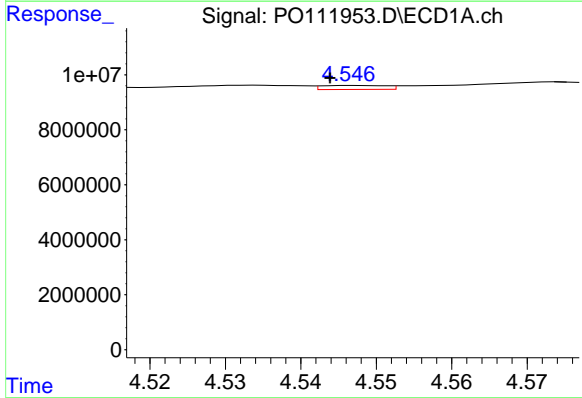
R.T.: 4.051 min
 Delta R.T.: 0.000 min
 Response: 586049
 Conc: 3.86 ng/ml

Instrument :
 ECD_O
 ClientSampleId :
 TP-1



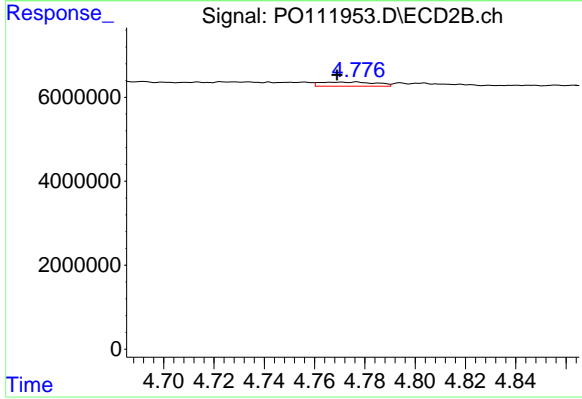
#11 AR-1232-1

R.T.: 4.042 min
 Delta R.T.: -0.001 min
 Response: 634812
 Conc: 4.77 ng/ml



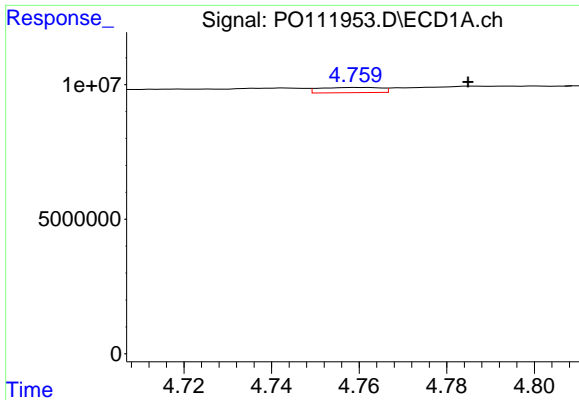
#12 AR-1232-2

R.T.: 4.547 min
 Delta R.T.: 0.003 min
 Response: 844857
 Conc: 9.80 ng/ml



#12 AR-1232-2

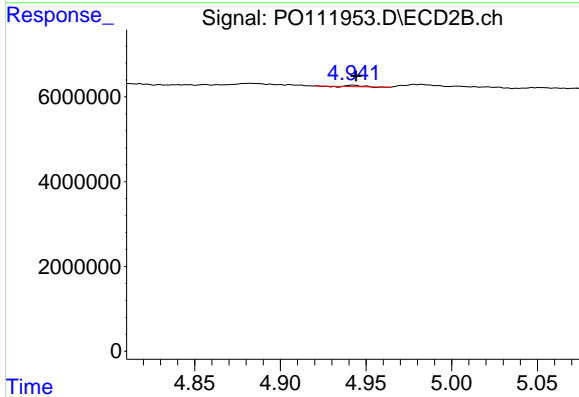
R.T.: 4.777 min
 Delta R.T.: 0.008 min
 Response: 1528138
 Conc: 11.60 ng/ml



#13 AR-1232-3

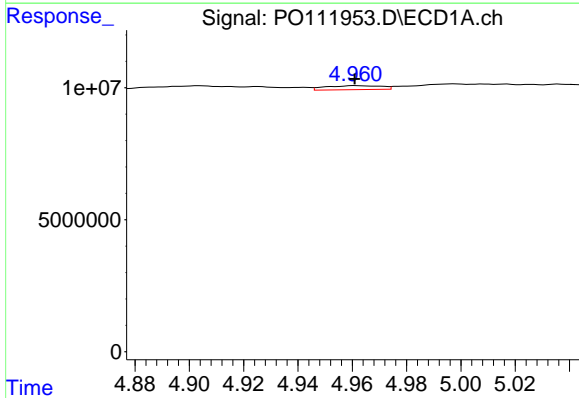
R.T.: 4.760 min
 Delta R.T.: -0.025 min
 Response: 1898842
 Conc: 11.66 ng/ml

Instrument :
 ECD_O
 ClientSampleId :
 TP-1



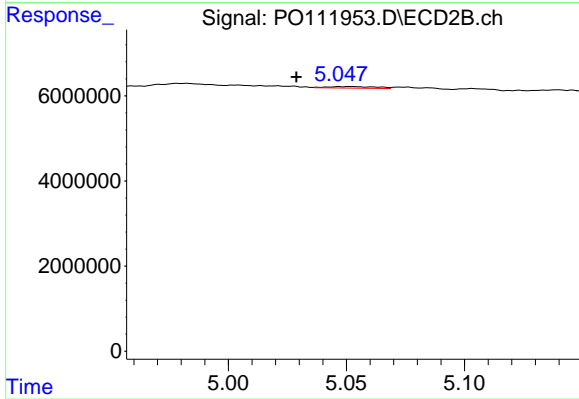
#13 AR-1232-3

R.T.: 4.942 min
 Delta R.T.: -0.002 min
 Response: 145610
 Conc: 2.11 ng/ml



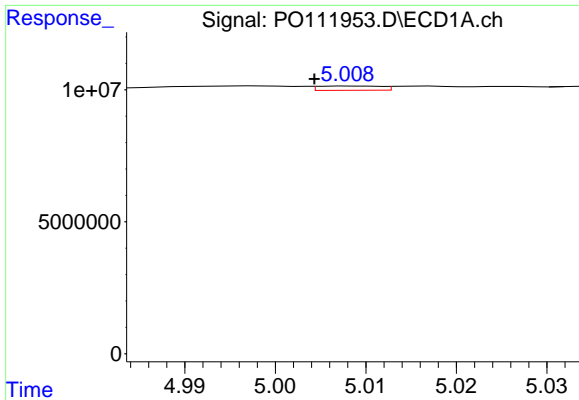
#14 AR-1232-4

R.T.: 4.961 min
 Delta R.T.: 0.000 min
 Response: 2146435
 Conc: 24.67 ng/ml



#14 AR-1232-4

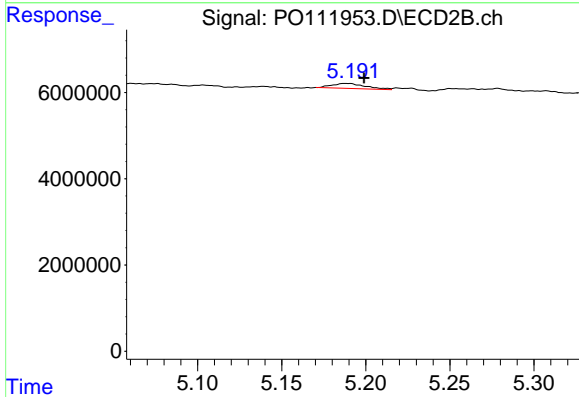
R.T.: 5.052 min
 Delta R.T.: 0.023 min
 Response: 532283
 Conc: 8.80 ng/ml



#15 AR-1232-5

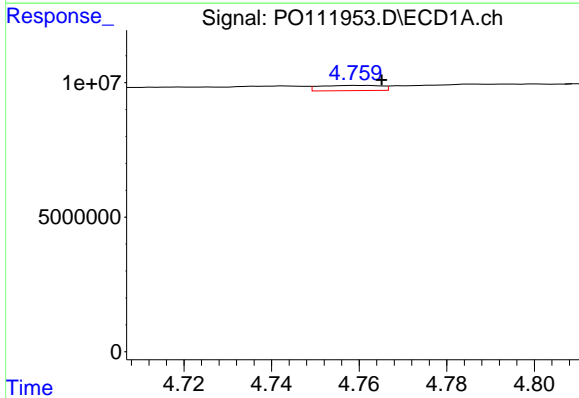
R.T.: 5.009 min
 Delta R.T.: 0.004 min
 Response: 782880
 Conc: 13.84 ng/ml

Instrument :
 ECD_O
 ClientSampleId :
 TP-1



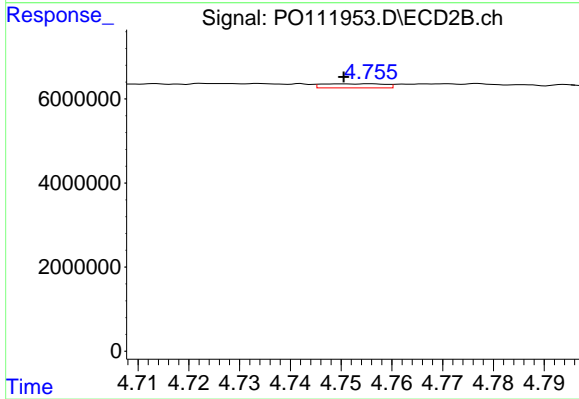
#15 AR-1232-5

R.T.: 5.188 min
 Delta R.T.: -0.010 min
 Response: 1625324
 Conc: 24.47 ng/ml



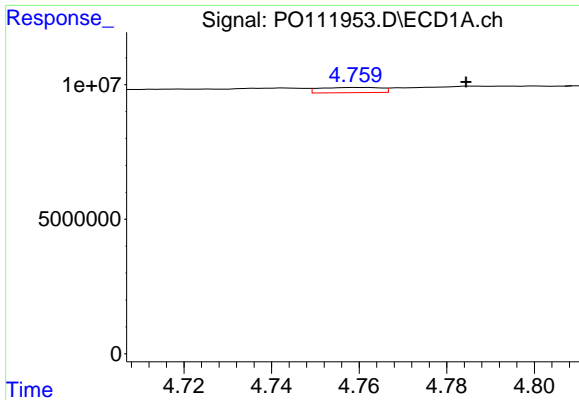
#16 AR-1242-1

R.T.: 4.760 min
 Delta R.T.: -0.005 min
 Response: 1898842
 Conc: 9.43 ng/ml



#16 AR-1242-1

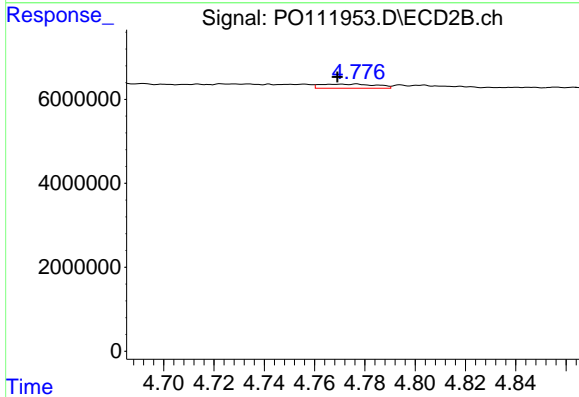
R.T.: 4.756 min
 Delta R.T.: 0.005 min
 Response: 819322
 Conc: 5.03 ng/ml



#17 AR-1242-2

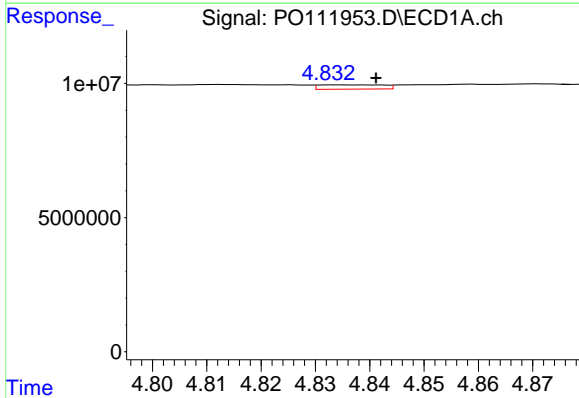
R.T.: 4.760 min
 Delta R.T.: -0.024 min
 Response: 1898842
 Conc: 6.74 ng/ml

Instrument :
 ECD_O
 ClientSampleId :
 TP-1



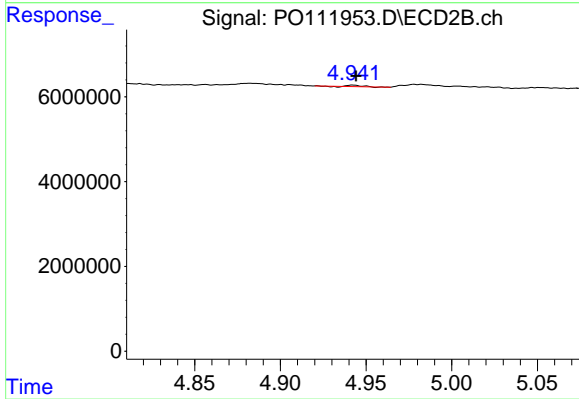
#17 AR-1242-2

R.T.: 4.777 min
 Delta R.T.: 0.008 min
 Response: 1528138
 Conc: 6.47 ng/ml



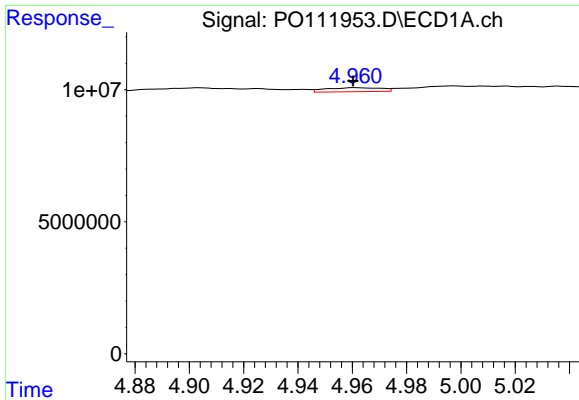
#18 AR-1242-3

R.T.: 4.834 min
 Delta R.T.: -0.007 min
 Response: 1308429
 Conc: 6.58 ng/ml



#18 AR-1242-3

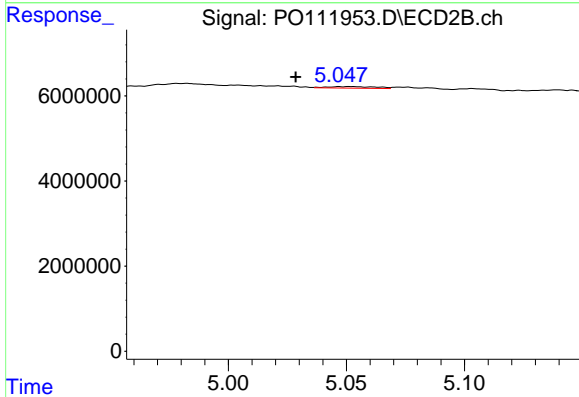
R.T.: 4.942 min
 Delta R.T.: -0.002 min
 Response: 145610
 Conc: 1.16 ng/ml



#19 AR-1242-4

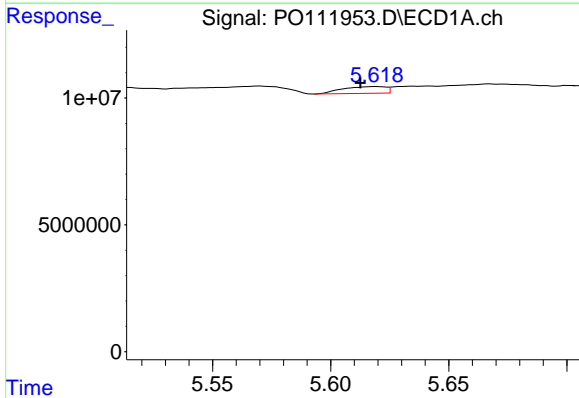
R.T.: 4.961 min
 Delta R.T.: 0.001 min
 Response: 2146435
 Conc: 13.57 ng/ml

Instrument :
 ECD_O
 ClientSampleId :
 TP-1



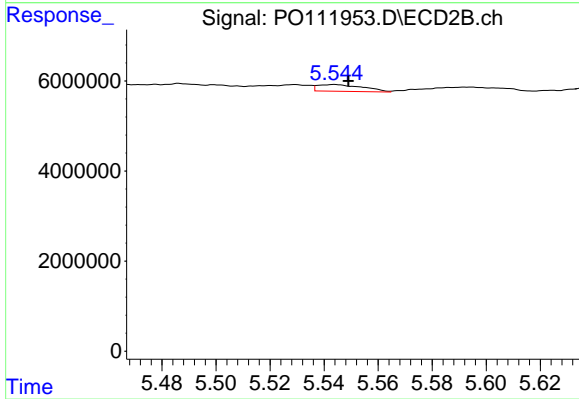
#19 AR-1242-4

R.T.: 5.052 min
 Delta R.T.: 0.023 min
 Response: 532283
 Conc: 4.34 ng/ml



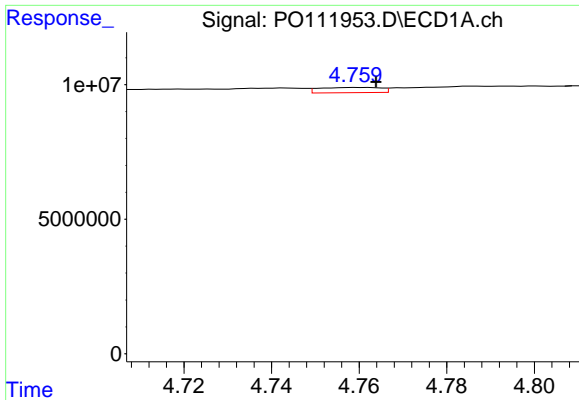
#20 AR-1242-5

R.T.: 5.619 min
 Delta R.T.: 0.007 min
 Response: 3394239
 Conc: 20.30 ng/ml



#20 AR-1242-5

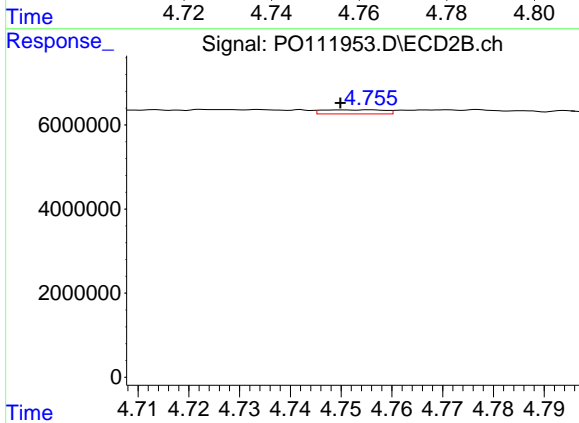
R.T.: 5.544 min
 Delta R.T.: -0.005 min
 Response: 1736690
 Conc: 11.59 ng/ml



#21 AR-1248-1

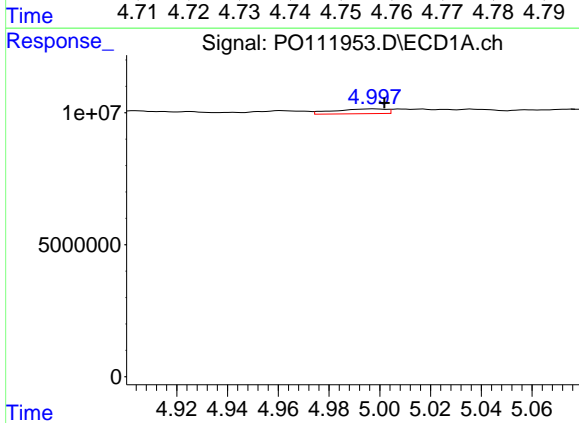
R.T.: 4.760 min
 Delta R.T.: -0.004 min
 Response: 1898842
 Conc: 11.77 ng/ml

Instrument :
 ECD_O
 ClientSampleId :
 TP-1



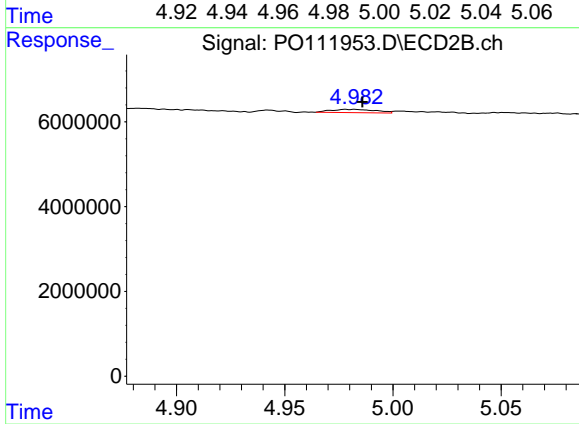
#21 AR-1248-1

R.T.: 4.756 min
 Delta R.T.: 0.006 min
 Response: 819322
 Conc: 6.15 ng/ml



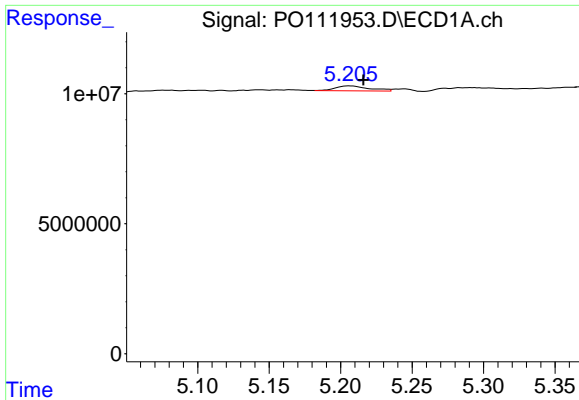
#22 AR-1248-2

R.T.: 4.998 min
 Delta R.T.: -0.004 min
 Response: 2610260
 Conc: 12.11 ng/ml



#22 AR-1248-2

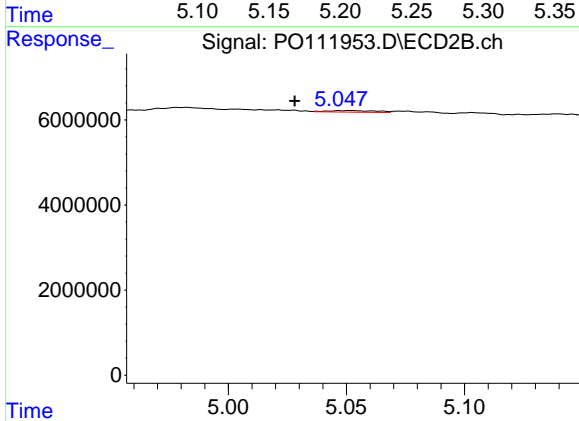
R.T.: 4.982 min
 Delta R.T.: -0.004 min
 Response: 1098646
 Conc: 6.17 ng/ml



#23 AR-1248-3

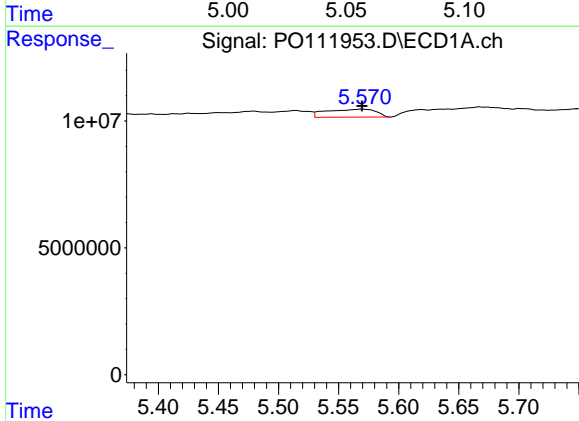
R.T.: 5.206 min
 Delta R.T.: -0.010 min
 Response: 3153373
 Conc: 11.69 ng/ml

Instrument :
 ECD_O
 ClientSampleId :
 TP-1



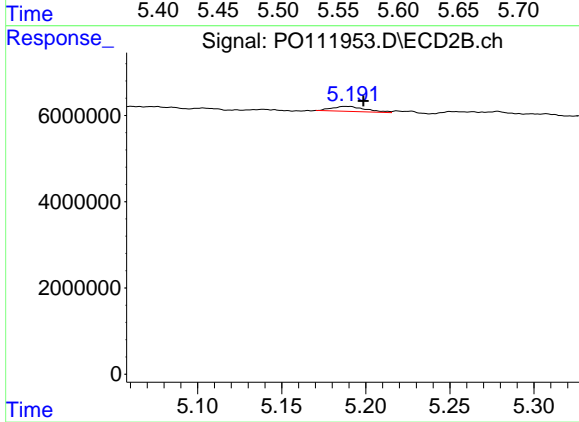
#23 AR-1248-3

R.T.: 5.052 min
 Delta R.T.: 0.024 min
 Response: 532283
 Conc: 2.81 ng/ml



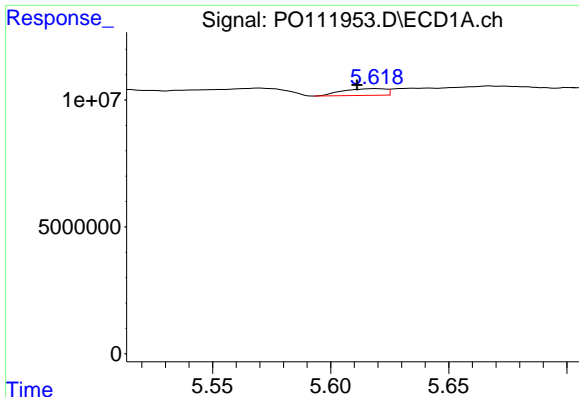
#24 AR-1248-4

R.T.: 5.570 min
 Delta R.T.: 0.000 min
 Response: 9012601
 Conc: 22.54 ng/ml



#24 AR-1248-4

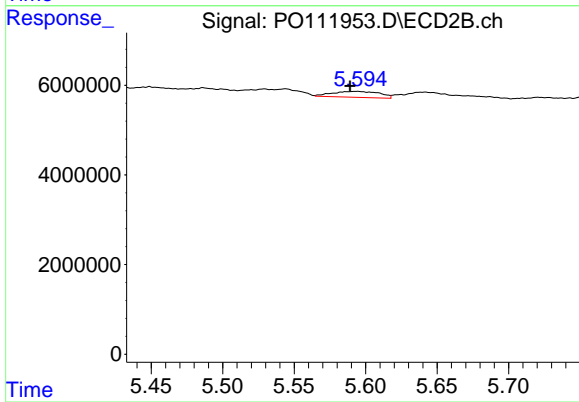
R.T.: 5.188 min
 Delta R.T.: -0.010 min
 Response: 1625324
 Conc: 7.12 ng/ml



#25 AR-1248-5

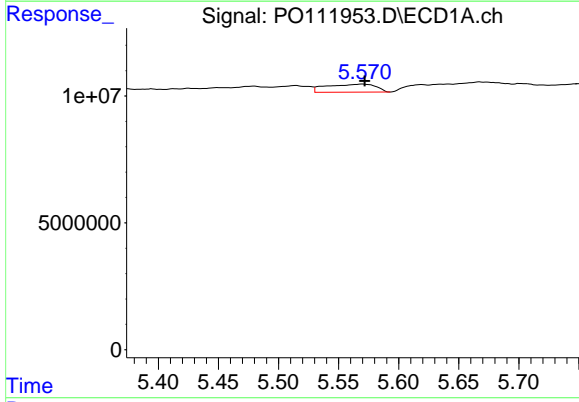
R.T.: 5.619 min
 Delta R.T.: 0.008 min
 Response: 3394239
 Conc: 12.09 ng/ml

Instrument :
 ECD_O
 ClientSampleId :
 TP-1



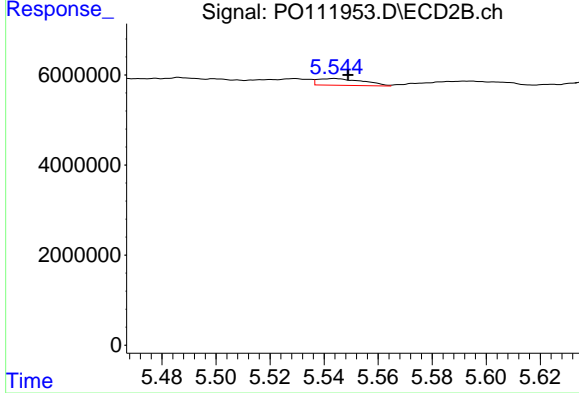
#25 AR-1248-5

R.T.: 5.593 min
 Delta R.T.: 0.004 min
 Response: 3077239
 Conc: 14.13 ng/ml



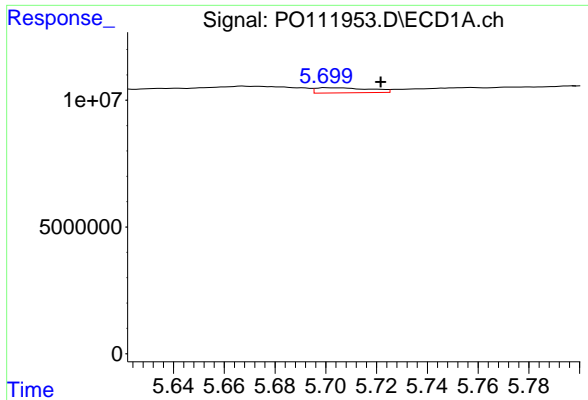
#26 AR-1254-1

R.T.: 5.570 min
 Delta R.T.: -0.002 min
 Response: 9012601
 Conc: 21.20 ng/ml



#26 AR-1254-1

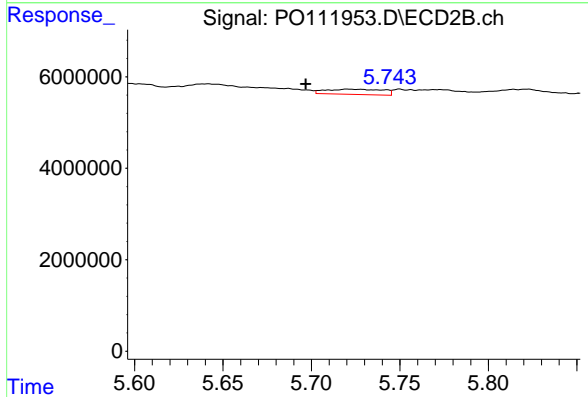
R.T.: 5.544 min
 Delta R.T.: -0.005 min
 Response: 1736690
 Conc: 5.38 ng/ml



#27 AR-1254-2

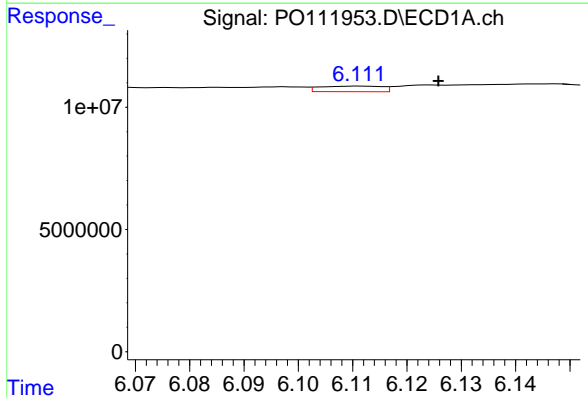
R.T.: 5.701 min
 Delta R.T.: -0.021 min
 Response: 2998245
 Conc: 7.90 ng/ml

Instrument :
 ECD_O
 ClientSampleId :
 TP-1



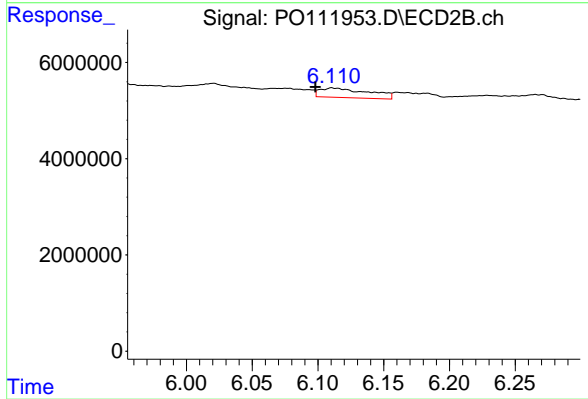
#27 AR-1254-2

R.T.: 5.721 min
 Delta R.T.: 0.024 min
 Response: 2558765
 Conc: 9.16 ng/ml



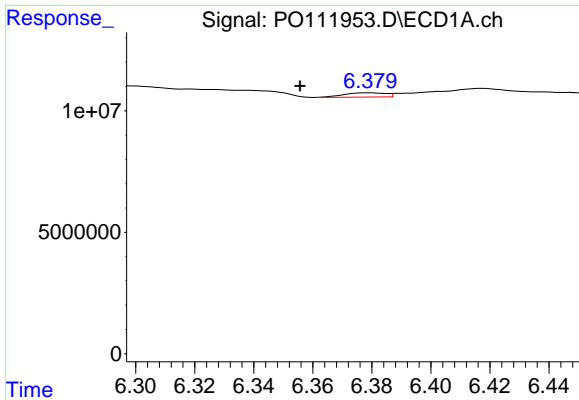
#28 AR-1254-3

R.T.: 6.112 min
 Delta R.T.: -0.014 min
 Response: 1786788
 Conc: 3.13 ng/ml



#28 AR-1254-3

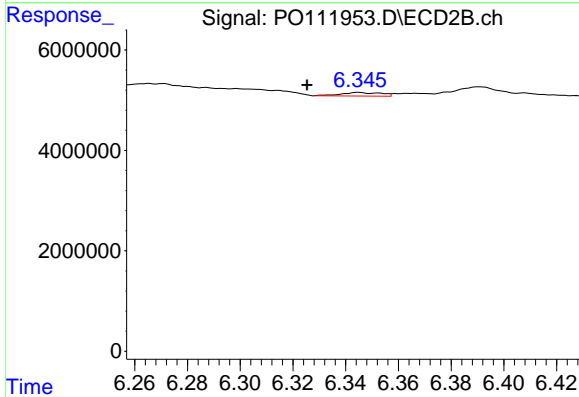
R.T.: 6.111 min
 Delta R.T.: 0.013 min
 Response: 5085603
 Conc: 12.14 ng/ml



#29 AR-1254-4

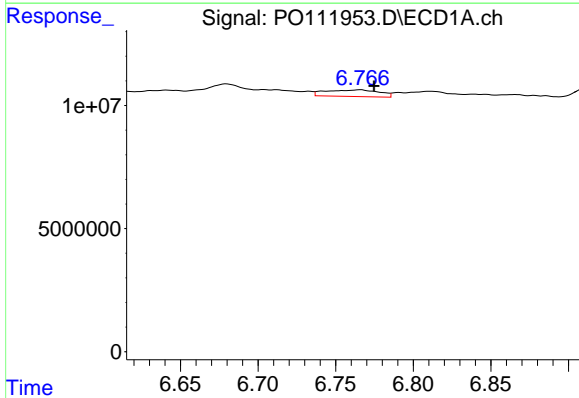
R.T.: 6.379 min
 Delta R.T.: 0.024 min
 Response: 1728550
 Conc: 4.95 ng/ml

Instrument :
 ECD_O
 ClientSampleId :
 TP-1



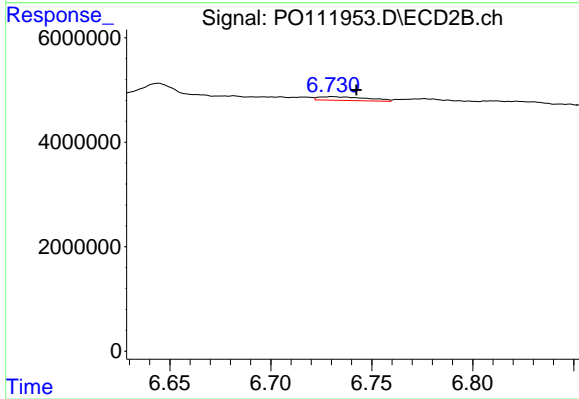
#29 AR-1254-4

R.T.: 6.345 min
 Delta R.T.: 0.020 min
 Response: 753126
 Conc: 3.31 ng/ml



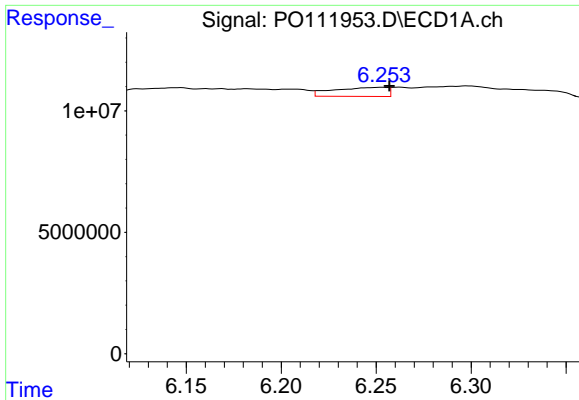
#30 AR-1254-5

R.T.: 6.766 min
 Delta R.T.: -0.009 min
 Response: 6481989
 Conc: 12.66 ng/ml



#30 AR-1254-5

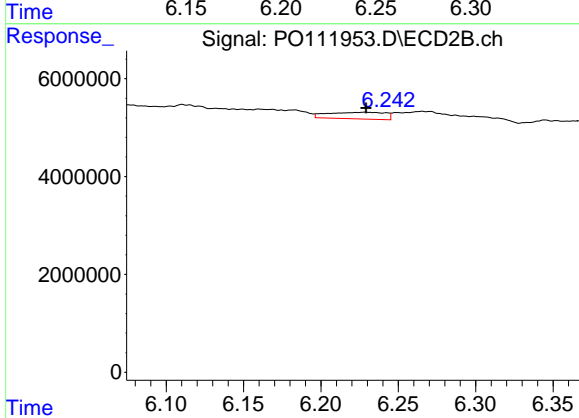
R.T.: 6.731 min
 Delta R.T.: -0.012 min
 Response: 1190214
 Conc: 3.66 ng/ml



#31 AR-1260-1

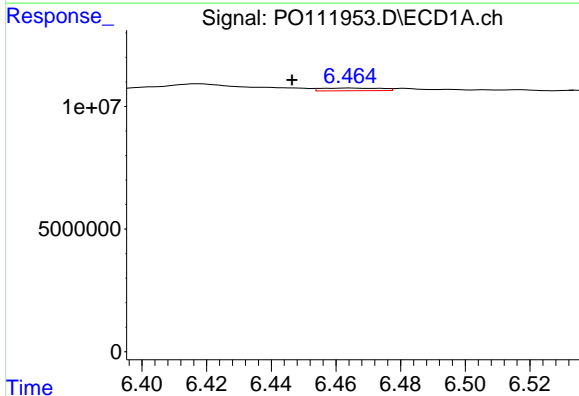
R.T.: 6.253 min
 Delta R.T.: -0.004 min
 Response: 7399651
 Conc: 20.83 ng/ml

Instrument :
 ECD_O
 ClientSampleId :
 TP-1



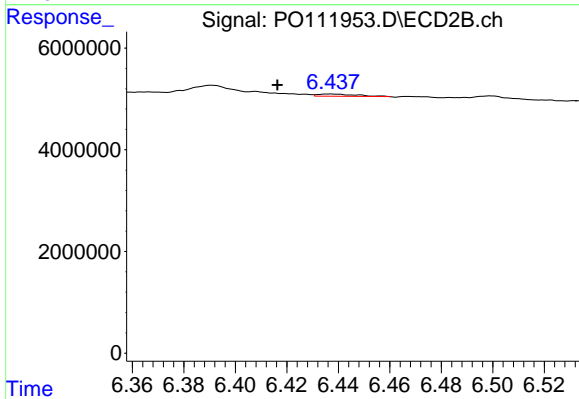
#31 AR-1260-1

R.T.: 6.229 min
 Delta R.T.: 0.000 min
 Response: 3443570
 Conc: 13.72 ng/ml



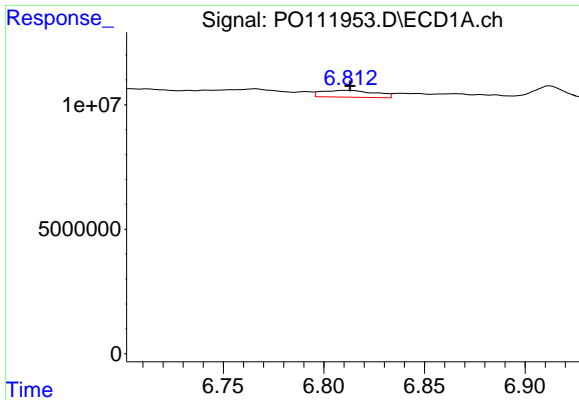
#32 AR-1260-2

R.T.: 6.464 min
 Delta R.T.: 0.018 min
 Response: 1424578
 Conc: 3.02 ng/ml



#32 AR-1260-2

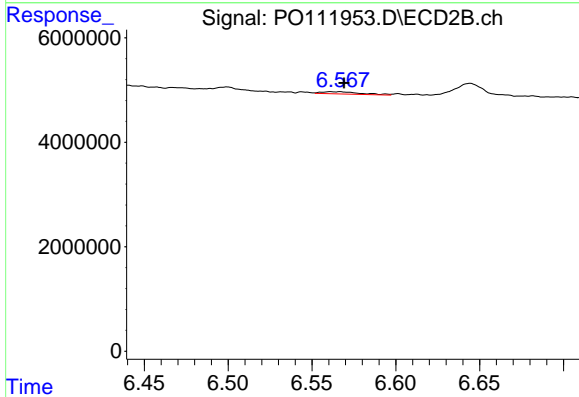
R.T.: 6.437 min
 Delta R.T.: 0.020 min
 Response: 169334
 Conc: 0.58 ng/ml



#33 AR-1260-3

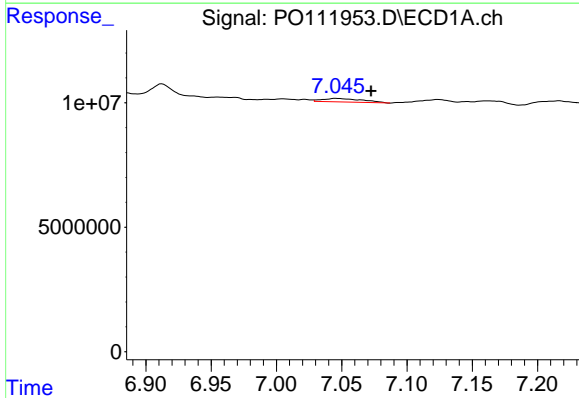
R.T.: 6.812 min
 Delta R.T.: -0.001 min
 Response: 5008278
 Conc: 11.79 ng/ml

Instrument :
 ECD_O
 ClientSampleId :
 TP-1



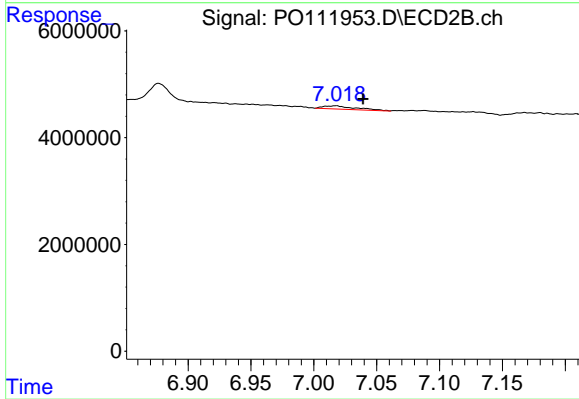
#33 AR-1260-3

R.T.: 6.567 min
 Delta R.T.: -0.002 min
 Response: 709073
 Conc: 2.65 ng/ml



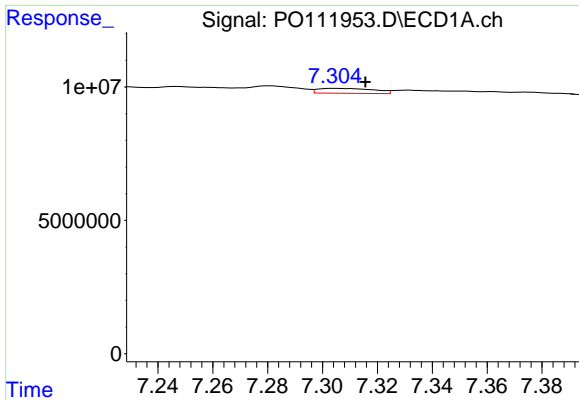
#34 AR-1260-4

R.T.: 7.046 min
 Delta R.T.: -0.027 min
 Response: 3008278
 Conc: 9.57 ng/ml



#34 AR-1260-4

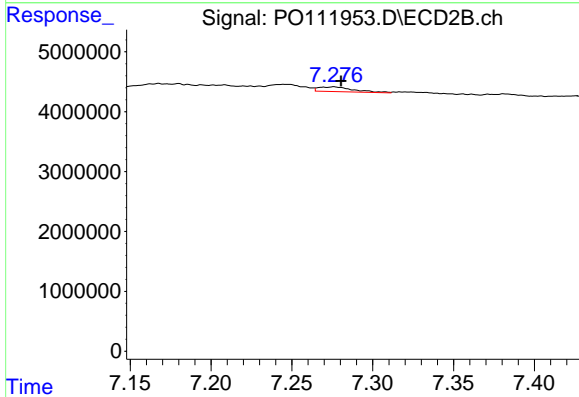
R.T.: 7.017 min
 Delta R.T.: -0.022 min
 Response: 1110343
 Conc: 5.84 ng/ml



#35 AR-1260-5

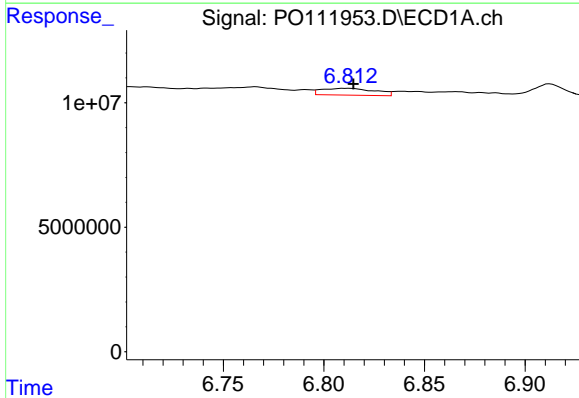
R.T.: 7.304 min
 Delta R.T.: -0.011 min
 Response: 2609053
 Conc: 3.17 ng/ml

Instrument :
 ECD_O
 ClientSampleId :
 TP-1



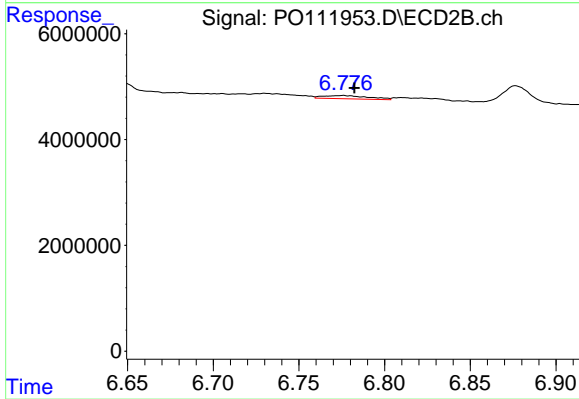
#35 AR-1260-5

R.T.: 7.276 min
 Delta R.T.: -0.005 min
 Response: 1168876
 Conc: 2.75 ng/ml



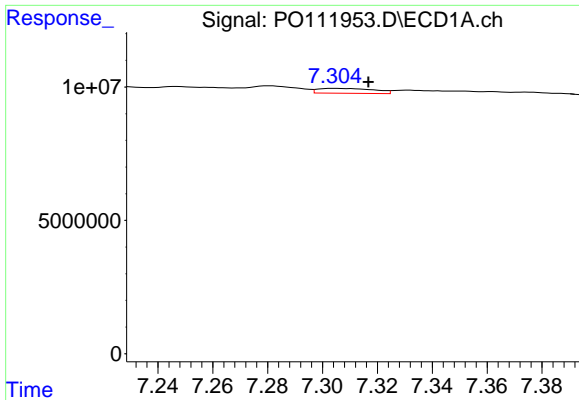
#36 AR-1262-1

R.T.: 6.812 min
 Delta R.T.: -0.003 min
 Response: 5008278
 Conc: 8.21 ng/ml



#36 AR-1262-1

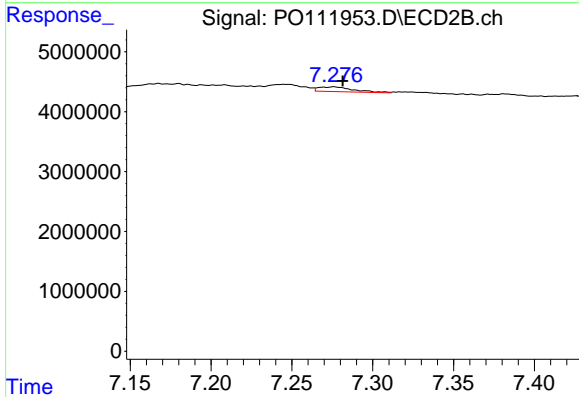
R.T.: 6.776 min
 Delta R.T.: -0.007 min
 Response: 1132062
 Conc: 3.35 ng/ml



#37 AR-1262-2

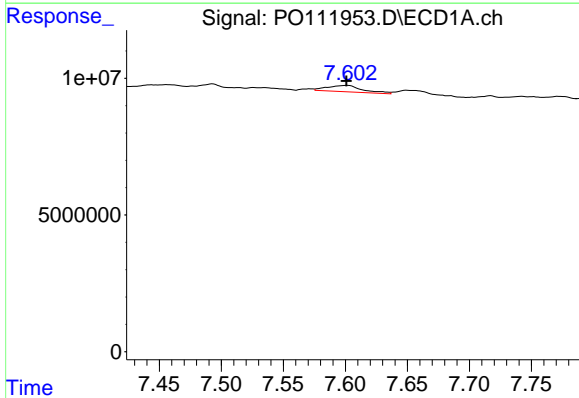
R.T.: 7.304 min
 Delta R.T.: -0.012 min
 Response: 2609053
 Conc: 2.77 ng/ml

Instrument :
 ECD_O
 ClientSampleId :
 TP-1



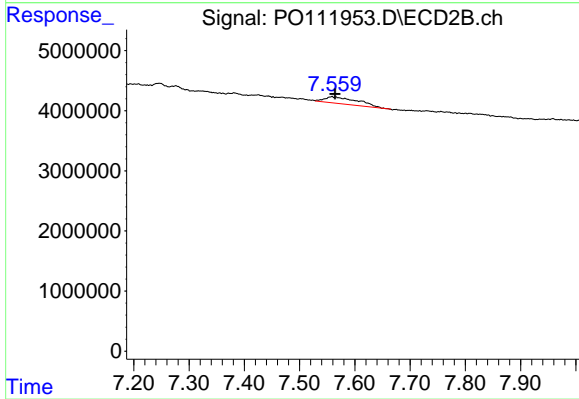
#37 AR-1262-2

R.T.: 7.276 min
 Delta R.T.: -0.005 min
 Response: 1168876
 Conc: 2.51 ng/ml



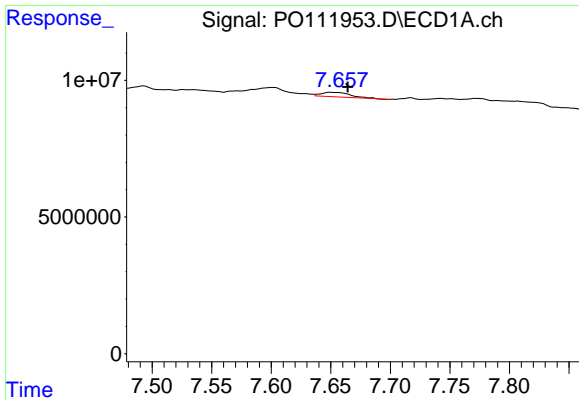
#38 AR-1262-3

R.T.: 7.601 min
 Delta R.T.: 0.000 min
 Response: 4528184
 Conc: 11.42 ng/ml



#38 AR-1262-3

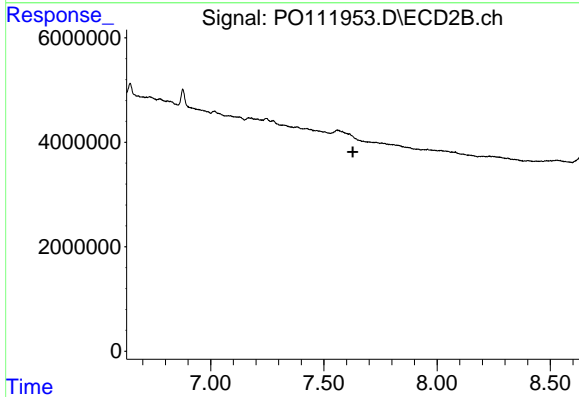
R.T.: 7.559 min
 Delta R.T.: -0.005 min
 Response: 4662563
 Conc: 28.04 ng/ml



#39 AR-1262-4

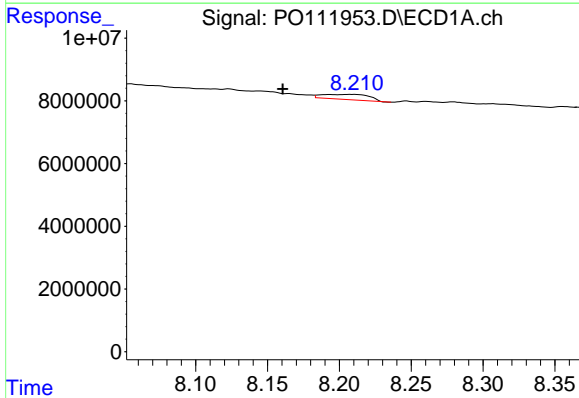
R.T.: 7.651 min
 Delta R.T.: -0.014 min
 Response: 2786289
 Conc: 4.24 ng/ml

Instrument :
 ECD_O
 ClientSampleId :
 TP-1



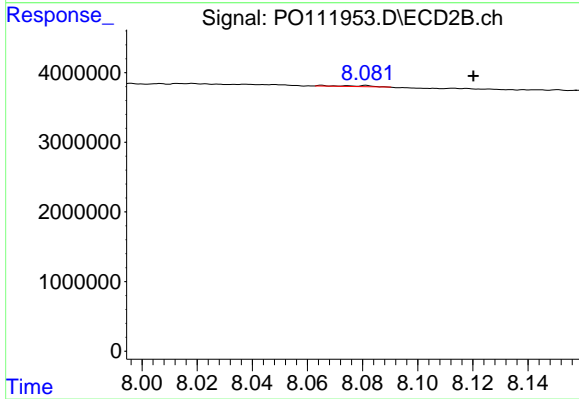
#39 AR-1262-4

R.T.: 7.674 min
 Delta R.T.: 0.047 min
 Response: -36901
 Conc: N.D.



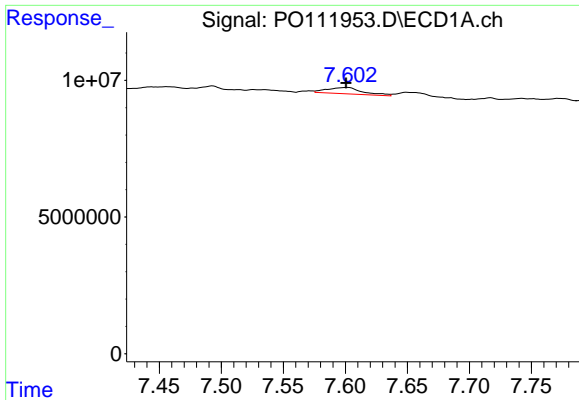
#40 AR-1262-5

R.T.: 8.209 min
 Delta R.T.: 0.048 min
 Response: 3729542
 Conc: 12.24 ng/ml



#40 AR-1262-5

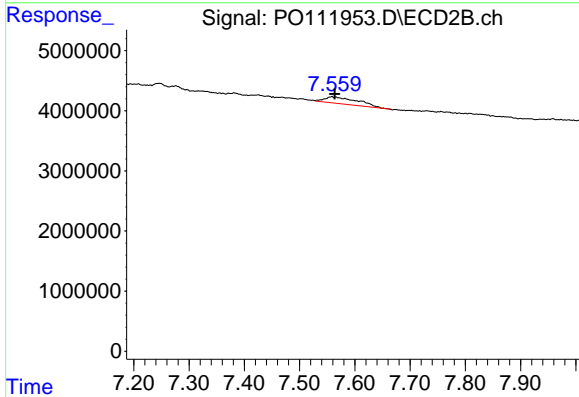
R.T.: 8.065 min
 Delta R.T.: -0.055 min
 Response: 116884
 Conc: 1.15 ng/ml



#41 AR-1268-1

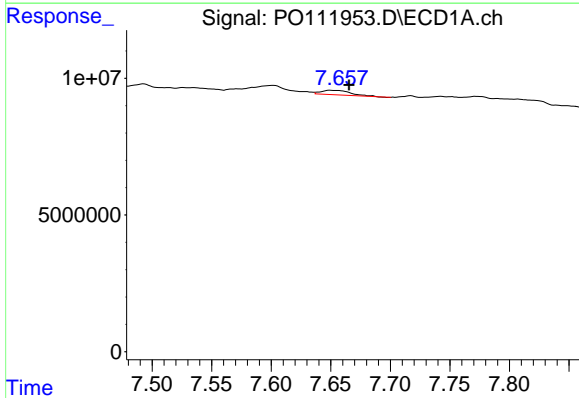
R.T.: 7.601 min
 Delta R.T.: 0.000 min
 Response: 4528184
 Conc: 4.02 ng/ml

Instrument :
 ECD_O
 ClientSampleId :
 TP-1



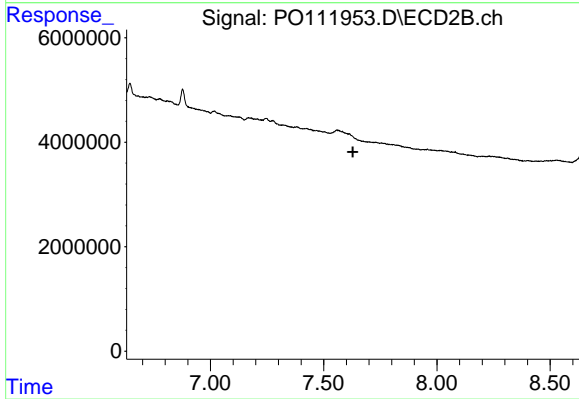
#41 AR-1268-1

R.T.: 7.559 min
 Delta R.T.: -0.005 min
 Response: 4662563
 Conc: 9.75 ng/ml



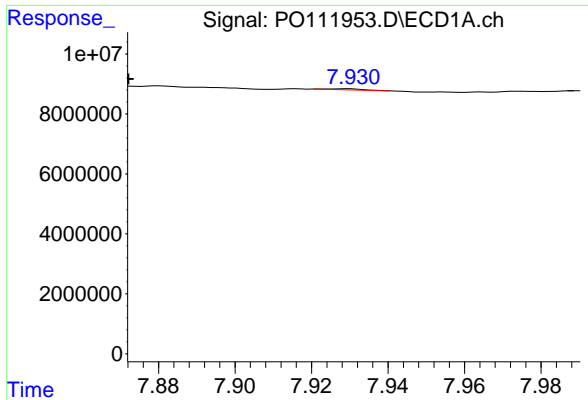
#42 AR-1268-2

R.T.: 7.651 min
 Delta R.T.: -0.015 min
 Response: 2786289
 Conc: 2.85 ng/ml



#42 AR-1268-2

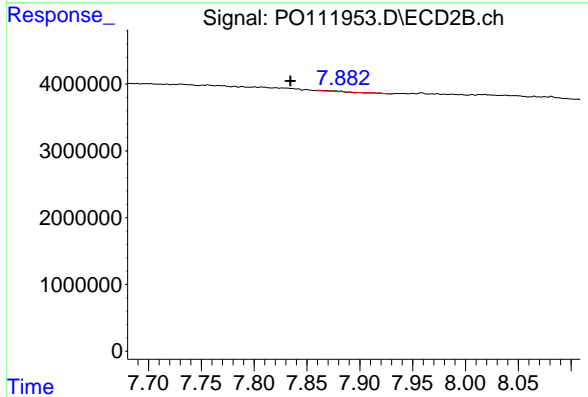
R.T.: 7.674 min
 Delta R.T.: 0.045 min
 Response: -36901
 Conc: N.D.



#43 AR-1268-3

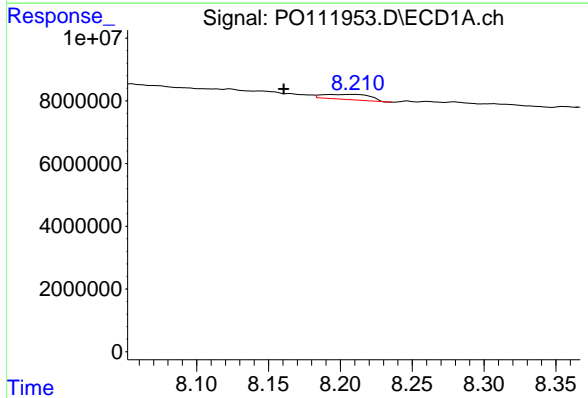
R.T.: 7.928 min
 Delta R.T.: 0.056 min
 Response: 183915
 Conc: 0.22 ng/ml

Instrument :
 ECD_O
 ClientSampleId :
 TP-1



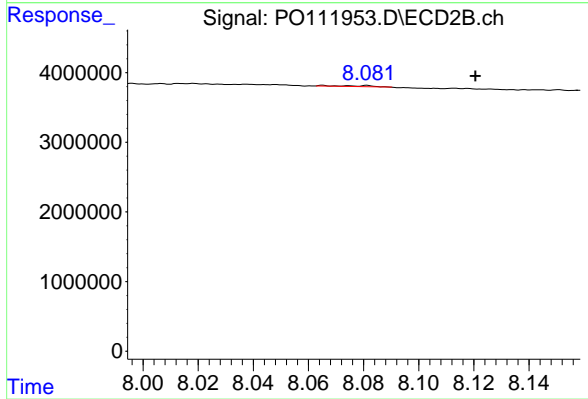
#43 AR-1268-3

R.T.: 7.862 min
 Delta R.T.: 0.027 min
 Response: 61432
 Conc: 0.19 ng/ml



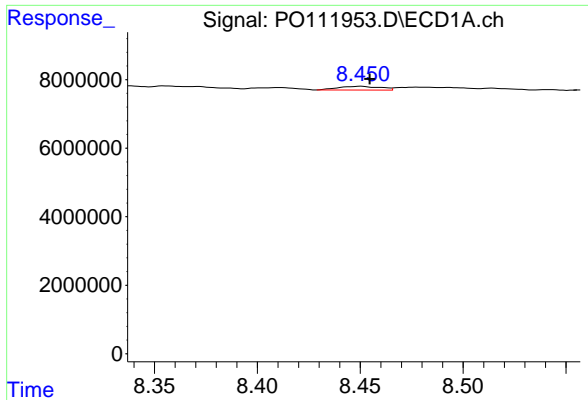
#44 AR-1268-4

R.T.: 8.209 min
 Delta R.T.: 0.048 min
 Response: 3729542
 Conc: 10.84 ng/ml



#44 AR-1268-4

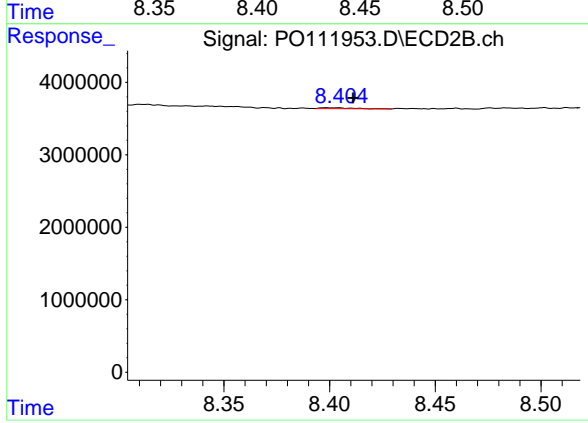
R.T.: 8.065 min
 Delta R.T.: -0.055 min
 Response: 116884
 Conc: 1.01 ng/ml



#45 AR-1268-5

R.T.: 8.450 min
 Delta R.T.: -0.005 min
 Response: 1528314
 Conc: 0.69 ng/ml

Instrument :
 ECD_O
 ClientSampleId :
 TP-1



#45 AR-1268-5

R.T.: 8.399 min
 Delta R.T.: -0.012 min
 Response: 135473
 Conc: 0.19 ng/ml