

Data Path : Z:\pestpcbsrv\HPCHEM1\ECD_0\Data\P0070125\
 Data File : P0111955.D
 Signal(s) : Signal #1: ECD1A.ch Signal #2: ECD2B.ch
 Acq On : 02 Jul 2025 00:00
 Operator : YP/AJ
 Sample : Q2464-01
 Misc :
 ALS Vial : 32 Sample Multiplier: 1

Instrument :
 ECD_0
 ClientSampleId :
 OR-3-063025

Integration File signal 1: autoint1.e
 Integration File signal 2: autoint2.e
 Quant Time: Jul 02 01:53:15 2025
 Quant Method : Z:\pestpcbsrv\HPCHEM1\ECD_0\methods\P0061125.M
 Quant Title : GC EXTRACTABLES
 QLast Update : Thu Jun 12 06:25:26 2025
 Response via : Initial Calibration
 Integrator: ChemStation

Volume Inj. : 2 µl
 Signal #1 Phase : ZB-MR1 Signal #2 Phase: ZB-MR2
 Signal #1 Info : 30Mx0.32mmx 0.50µ Signal #2 Info : 30M x 0.32mm x 0.25µm

Compound	RT#1	RT#2	Resp#1	Resp#2	ng/ml	ng/ml
System Monitoring Compounds						
1) SA Tetrachlo...	3.677	3.672	116.6E6	107.7E6	20.252	19.182
2) SA Decachlor...	8.709	8.657	74587273	30650894	14.209	17.242
Target Compounds						
3) L1 AR-1016-1	4.767	4.751	61129195	26733776	256.249	135.865 #
4) L1 AR-1016-2	4.767	4.751	61129195	26733776	183.713	93.842 #
5) L1 AR-1016-3	4.855	4.944	90315081	5947868	392.434	39.589 #
6) L1 AR-1016-4	4.961	4.985	43738612	19148888	235.835	157.232 #
7) L1 AR-1016-5	5.206	5.188	6293616	4985910	33.720	31.319
8) L2 AR-1221-1	3.897	3.890	9599038	5089755	110.234	68.160 #
9) L2 AR-1221-2	3.979	3.970	11057691	8190075	172.325	146.385
10) L2 AR-1221-3	4.030	4.044	3798075	1161540	19.474	6.760 #
11) L3 AR-1232-1	4.030	4.044	3798075	1161540	25.029	8.734 #
12) L3 AR-1232-2	4.535	4.751	50828406	26733776	589.512	202.850 #
13) L3 AR-1232-3	4.767	4.944	61129195	5947868	375.300	86.054 #
14) L3 AR-1232-4	4.961	5.035	43738612	8753789	502.632	144.729 #
15) L3 AR-1232-5	5.001	5.188	59852727	4985910	1057.832	75.072 #
16) L4 AR-1242-1	4.767	4.751	61129195	26733776	303.455	164.253 #
17) L4 AR-1242-2	4.767	4.751	61129195	26733776	216.950	113.249 #
18) L4 AR-1242-3	4.855	4.944	90315081	5947868	454.247	47.360 #
19) L4 AR-1242-4	4.961	5.035	43738612	8753789	276.482	71.425 #
20) L4 AR-1242-5	5.622	5.550	43685646	16471155	261.252	109.889 #
21) L5 AR-1248-1	4.767	4.751	61129195	26733776	379.059	200.577 #
22) L5 AR-1248-2	5.001	4.985	59852727	19148888	277.603	107.484 #
23) L5 AR-1248-3	5.206	5.035	6293616	8753789	23.332	46.209 #
24) L5 AR-1248-4	5.575	5.188	39671140	4985910	99.227	21.837 #
25) L5 AR-1248-5	5.622	5.595	43685646	10205842	155.570	46.866 #
26) L6 AR-1254-1	5.575	5.550	39671140	16471155	93.328	50.993 #
27) L6 AR-1254-2	5.718	5.694	48899491	15209774	128.843	54.454 #
28) L6 AR-1254-3	6.117	6.093	63767143	43930707	111.608	104.833
29) L6 AR-1254-4	6.346	6.320	59404998	10517156	170.272	46.168 #
30) L6 AR-1254-5	6.770	6.739	23781300	9867954	46.436	30.308 #
31) L7 AR-1260-1	6.258	6.231	62538495	24634399	176.005	98.178 #
32) L7 AR-1260-2	6.444	6.413	37397108	5795370	79.152	19.711 #
33) L7 AR-1260-3	6.834	6.565	7877757	5027031	18.550	18.815
34) L7 AR-1260-4	7.075	7.040	16828200	2229898	53.517	11.730 #
35) L7 AR-1260-5	7.312	7.276	12069749	5186197	14.653	12.202
36) L8 AR-1262-1	6.834	6.804	7877757	921879	12.917	2.730 #
37) L8 AR-1262-2	7.312	7.276	12069749	5186197	12.821	11.135
38) L8 AR-1262-3	7.595	7.555	24755193	4969576	62.415	29.886 #
39) L8 AR-1262-4	7.667	7.627	33075504	7560504	50.343	27.287 #
40) L8 AR-1262-5	8.195	8.153	2896920	-286427	9.508	N.D. #
41) L9 AR-1268-1	7.595	7.555	24755193	4969576	21.974	10.388 #

Data Path : Z:\pestpcbsrv\HPCHEM1\ECD_0\Data\P0070125\
 Data File : P0111955.D
 Signal(s) : Signal #1: ECD1A.ch Signal #2: ECD2B.ch
 Acq On : 02 Jul 2025 00:00
 Operator : YP/AJ
 Sample : Q2464-01
 Misc :
 ALS Vial : 32 Sample Multiplier: 1

Instrument :
 ECD_0
ClientSampleId :
 OR-3-063025

Integration File signal 1: autoint1.e
 Integration File signal 2: autoint2.e
 Quant Time: Jul 02 01:53:15 2025
 Quant Method : Z:\pestpcbsrv\HPCHEM1\ECD_0\methods\P0061125.M
 Quant Title : GC EXTRACTABLES
 QLast Update : Thu Jun 12 06:25:26 2025
 Response via : Initial Calibration
 Integrator: ChemStation

Volume Inj. : 2 µl
 Signal #1 Phase : ZB-MR1 Signal #2 Phase: ZB-MR2
 Signal #1 Info : 30Mx0.32mmx 0.50µ Signal #2 Info : 30M x 0.32mm x 0.25µm

	Compound	RT#1	RT#2	Resp#1	Resp#2	ng/ml	ng/ml
42)	L9 AR-1268-2	7.667	7.627	33075504	7560504	33.846	18.152 #
43)	L9 AR-1268-3	7.872	7.829	2078072	366957	2.535	1.158 #
44)	L9 AR-1268-4	8.195	8.153	2896920	-286427	8.422	N.D. #
45)	L9 AR-1268-5	8.443	8.405	1633342	169951	0.736	0.235 #

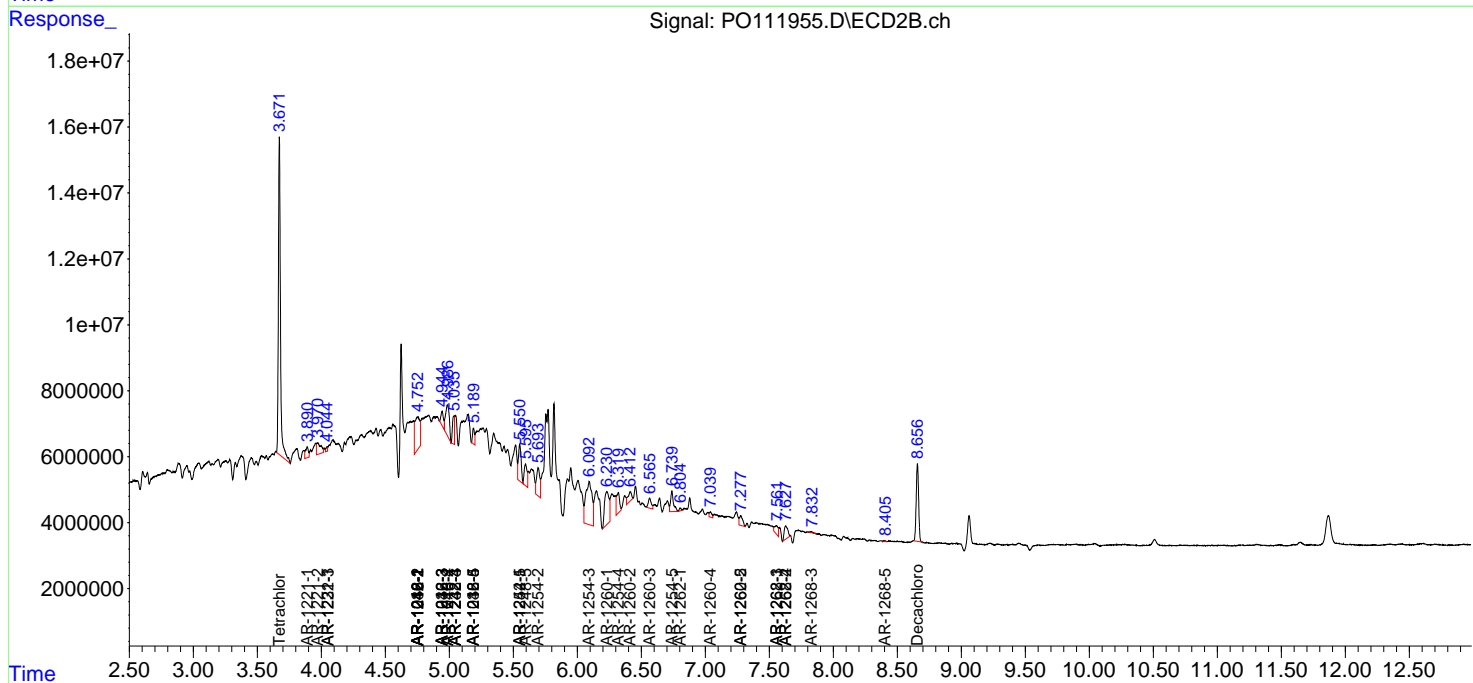
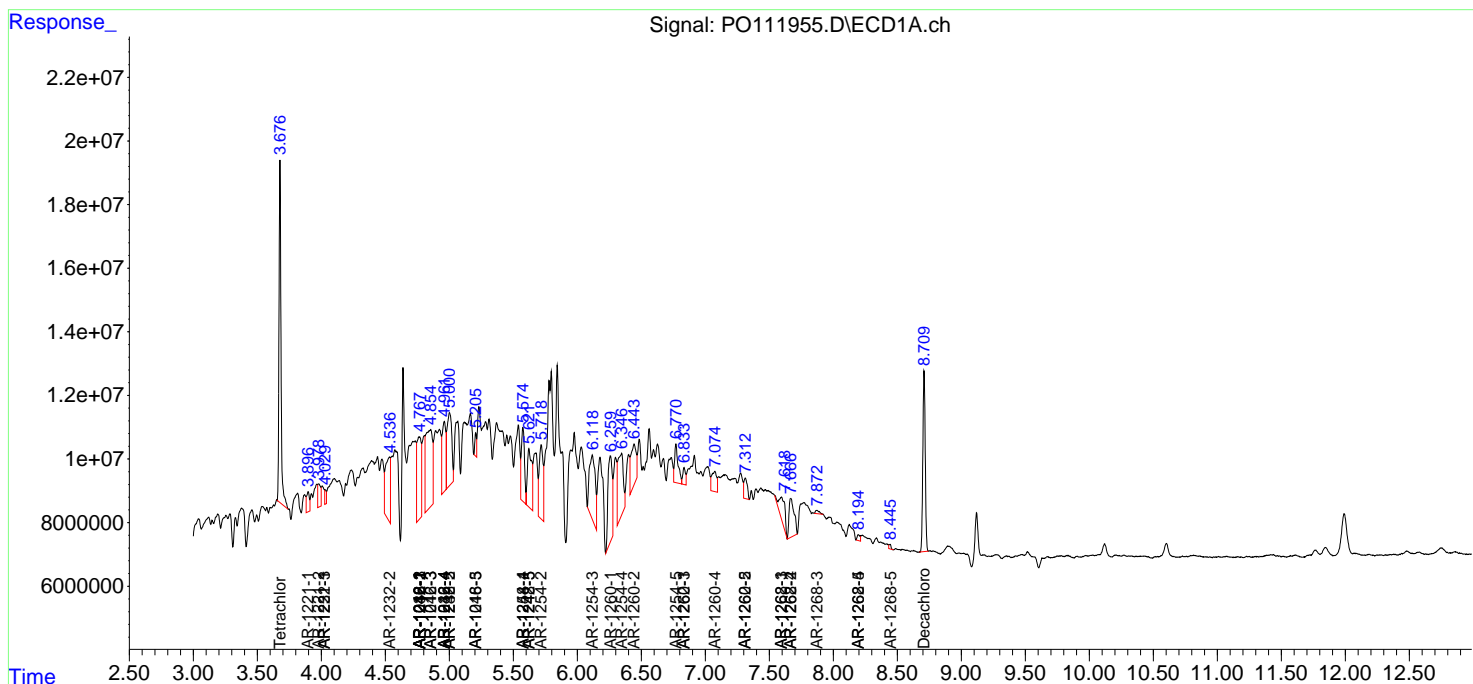
(f)=RT Delta > 1/2 Window (#)=Amounts differ by > 25% (m)=manual int.

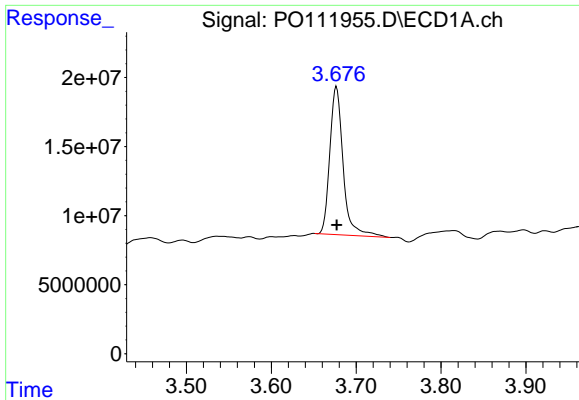
Data Path : Z:\pestpcbsrv\HPCHEM1\ECD_O\Data\PO070125\
 Data File : PO111955.D
 Signal(s) : Signal #1: ECD1A.ch Signal #2: ECD2B.ch
 Acq On : 02 Jul 2025 00:00
 Operator : YP/AJ
 Sample : Q2464-01
 Misc :
 ALS Vial : 32 Sample Multiplier: 1

Instrument :
 ECD_O
 ClientSampleId :
 OR-3-063025

Integration File signal 1: autoint1.e
 Integration File signal 2: autoint2.e
 Quant Time: Jul 02 01:53:15 2025
 Quant Method : Z:\pestpcbsrv\HPCHEM1\ECD_O\methods\PO061125.M
 Quant Title : GC EXTRACTABLES
 QLast Update : Thu Jun 12 06:25:26 2025
 Response via : Initial Calibration
 Integrator: ChemStation

Volume Inj. : 2 µl
 Signal #1 Phase : ZB-MR1 Signal #2 Phase: ZB-MR2
 Signal #1 Info : 30Mx0.32mmx 0.50µ Signal #2 Info : 30M x 0.32mm x 0.25µm

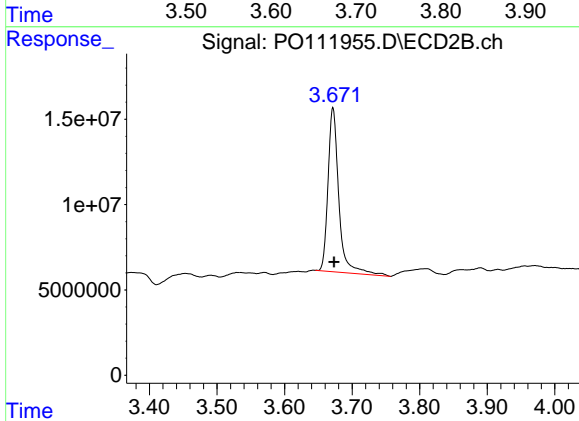




#1 Tetrachloro-m-xylene

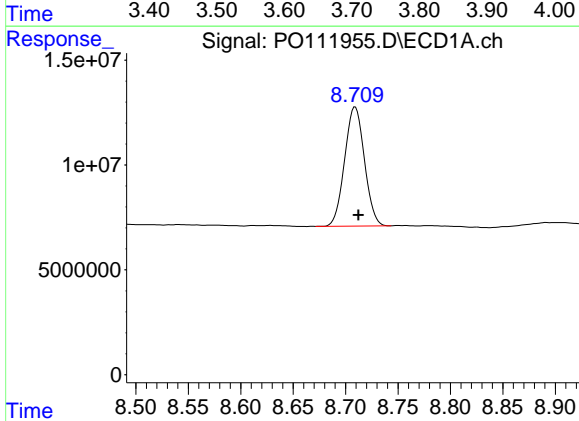
R.T.: 3.677 min
 Delta R.T.: 0.000 min
 Response: 116640427
 Conc: 20.25 ng/ml

Instrument :
 ECD_O
 ClientSampleId :
 OR-3-063025



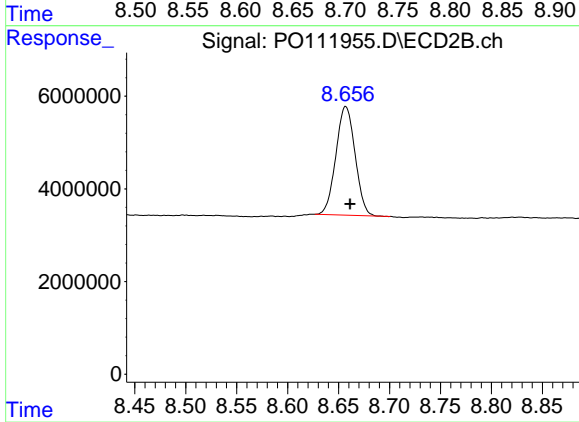
#1 Tetrachloro-m-xylene

R.T.: 3.672 min
 Delta R.T.: -0.002 min
 Response: 107749355
 Conc: 19.18 ng/ml



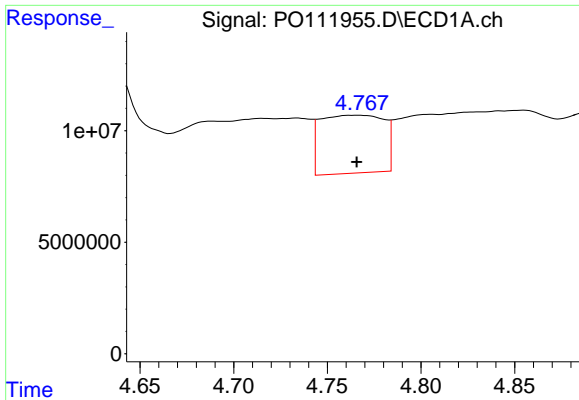
#2 Decachlorobiphenyl

R.T.: 8.709 min
 Delta R.T.: -0.003 min
 Response: 74587273
 Conc: 14.21 ng/ml



#2 Decachlorobiphenyl

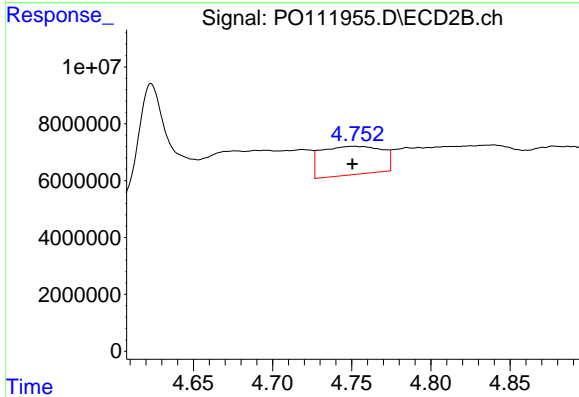
R.T.: 8.657 min
 Delta R.T.: -0.004 min
 Response: 30650894
 Conc: 17.24 ng/ml



#3 AR-1016-1

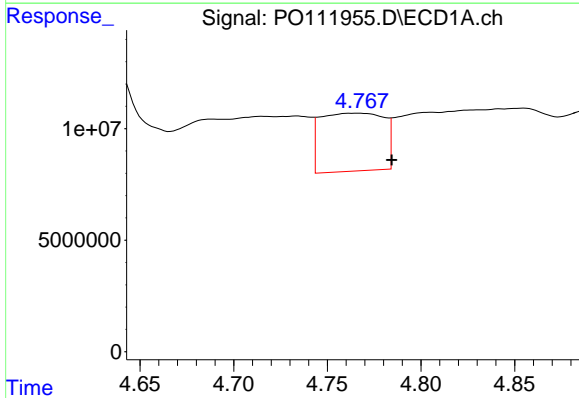
R.T.: 4.767 min
Delta R.T.: 0.001 min
Response: 61129195
Conc: 256.25 ng/ml

Instrument :
ECD_O
ClientSampleId :
OR-3-063025



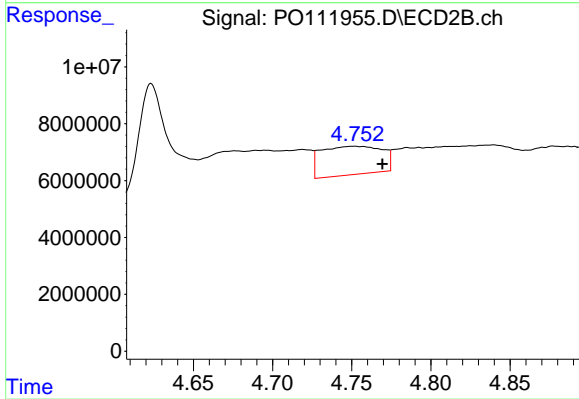
#3 AR-1016-1

R.T.: 4.751 min
Delta R.T.: 0.000 min
Response: 26733776
Conc: 135.87 ng/ml



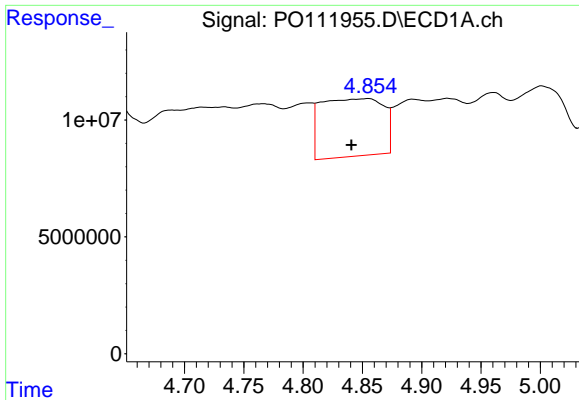
#4 AR-1016-2

R.T.: 4.767 min
Delta R.T.: -0.017 min
Response: 61129195
Conc: 183.71 ng/ml



#4 AR-1016-2

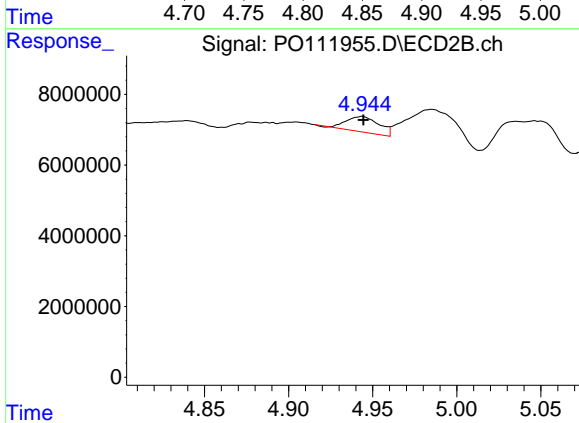
R.T.: 4.751 min
Delta R.T.: -0.018 min
Response: 26733776
Conc: 93.84 ng/ml



#5 AR-1016-3

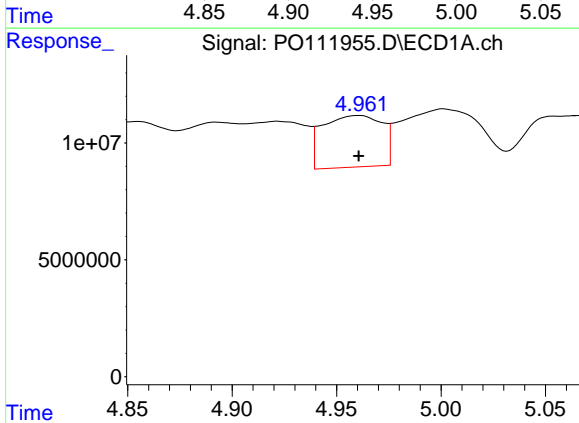
R.T.: 4.855 min
 Delta R.T.: 0.015 min
 Response: 90315081
 Conc: 392.43 ng/ml

Instrument :
 ECD_O
 ClientSampleId :
 OR-3-063025



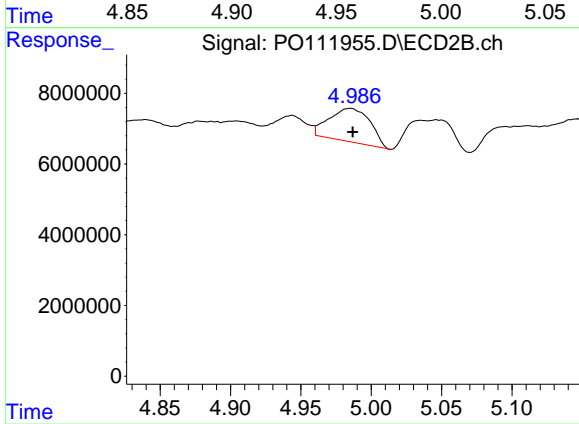
#5 AR-1016-3

R.T.: 4.944 min
 Delta R.T.: 0.000 min
 Response: 5947868
 Conc: 39.59 ng/ml



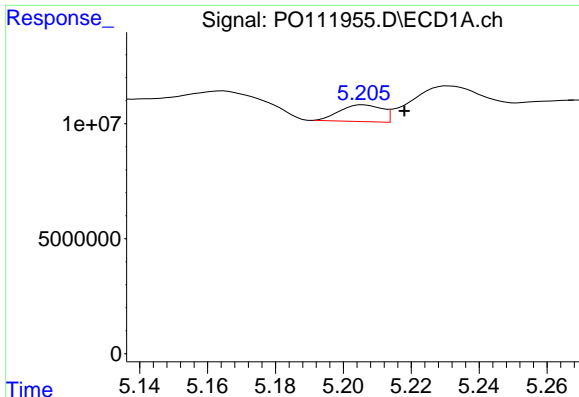
#6 AR-1016-4

R.T.: 4.961 min
 Delta R.T.: 0.000 min
 Response: 43738612
 Conc: 235.84 ng/ml



#6 AR-1016-4

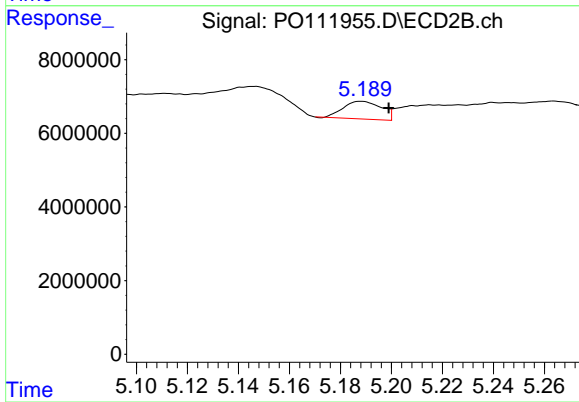
R.T.: 4.985 min
 Delta R.T.: -0.002 min
 Response: 19148888
 Conc: 157.23 ng/ml



#7 AR-1016-5

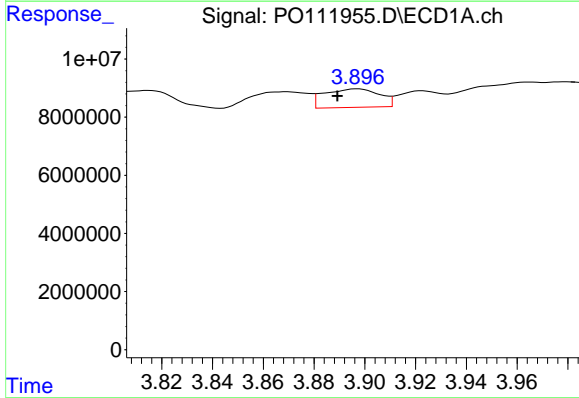
R.T.: 5.206 min
 Delta R.T.: -0.012 min
 Response: 6293616
 Conc: 33.72 ng/ml

Instrument :
 ECD_O
 ClientSampleId :
 OR-3-063025



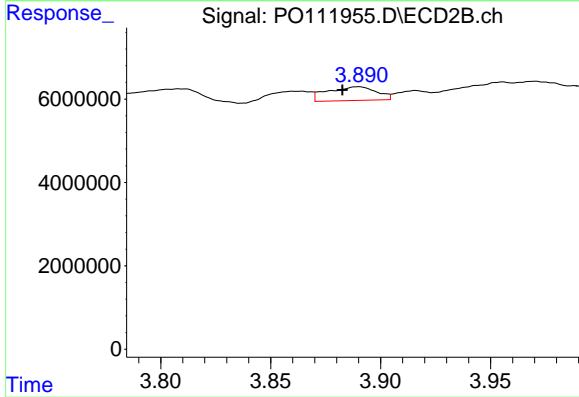
#7 AR-1016-5

R.T.: 5.188 min
 Delta R.T.: -0.011 min
 Response: 4985910
 Conc: 31.32 ng/ml



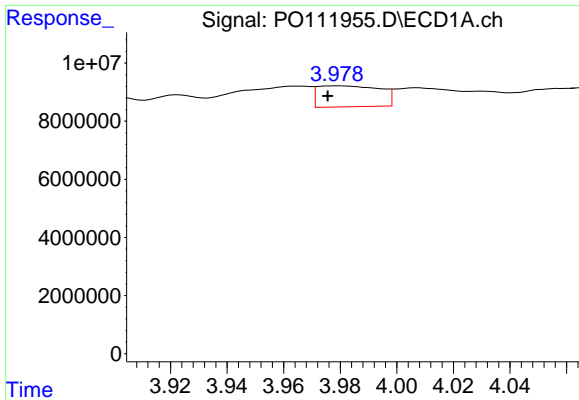
#8 AR-1221-1

R.T.: 3.897 min
 Delta R.T.: 0.008 min
 Response: 9599038
 Conc: 110.23 ng/ml



#8 AR-1221-1

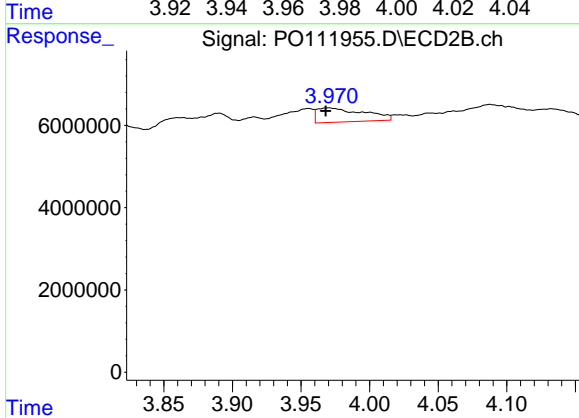
R.T.: 3.890 min
 Delta R.T.: 0.007 min
 Response: 5089755
 Conc: 68.16 ng/ml



#9 AR-1221-2

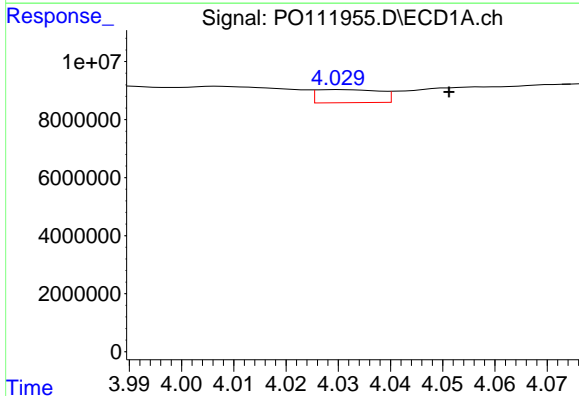
R.T.: 3.979 min
 Delta R.T.: 0.004 min
 Response: 11057691
 Conc: 172.32 ng/ml

Instrument :
 ECD_O
 ClientSampleId :
 OR-3-063025



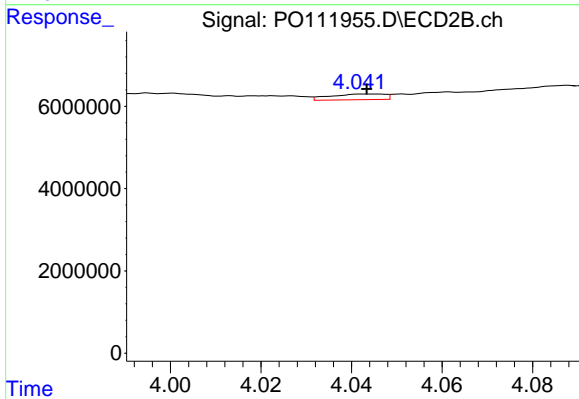
#9 AR-1221-2

R.T.: 3.970 min
 Delta R.T.: 0.002 min
 Response: 8190075
 Conc: 146.38 ng/ml



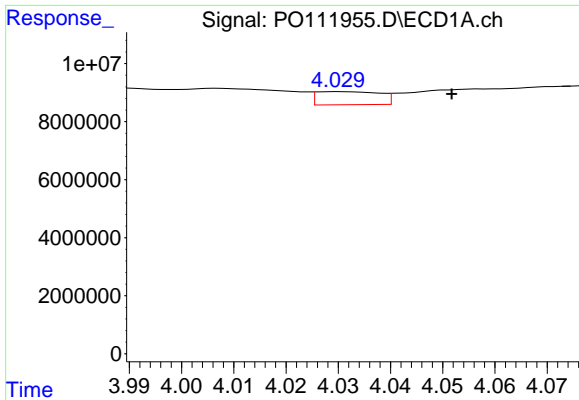
#10 AR-1221-3

R.T.: 4.030 min
 Delta R.T.: -0.021 min
 Response: 3798075
 Conc: 19.47 ng/ml



#10 AR-1221-3

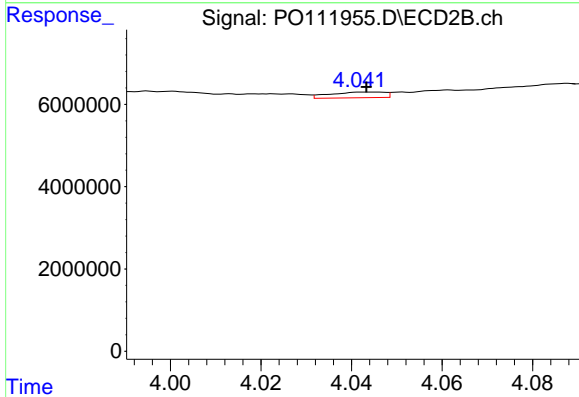
R.T.: 4.044 min
 Delta R.T.: 0.000 min
 Response: 1161540
 Conc: 6.76 ng/ml



#11 AR-1232-1

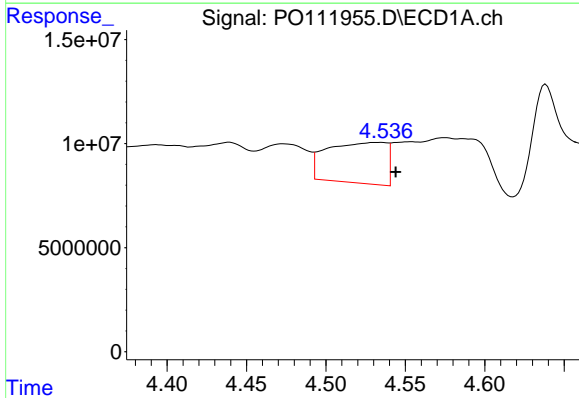
R.T.: 4.030 min
 Delta R.T.: -0.022 min
 Response: 3798075
 Conc: 25.03 ng/ml

Instrument :
 ECD_O
 ClientSampleId :
 OR-3-063025



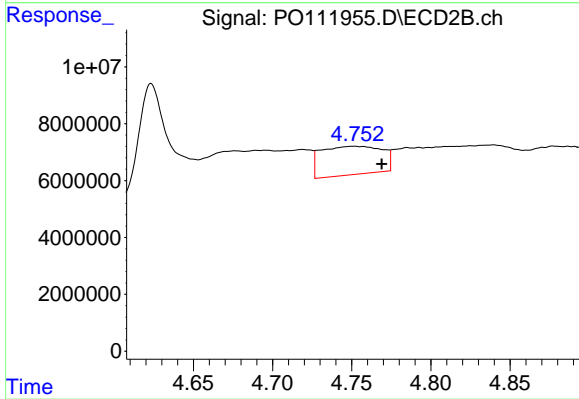
#11 AR-1232-1

R.T.: 4.044 min
 Delta R.T.: 0.000 min
 Response: 1161540
 Conc: 8.73 ng/ml



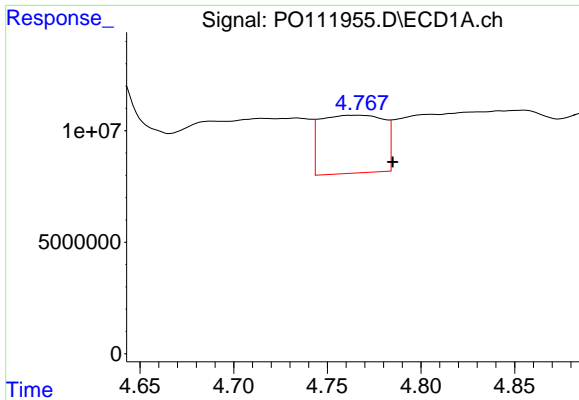
#12 AR-1232-2

R.T.: 4.535 min
 Delta R.T.: -0.009 min
 Response: 50828406
 Conc: 589.51 ng/ml



#12 AR-1232-2

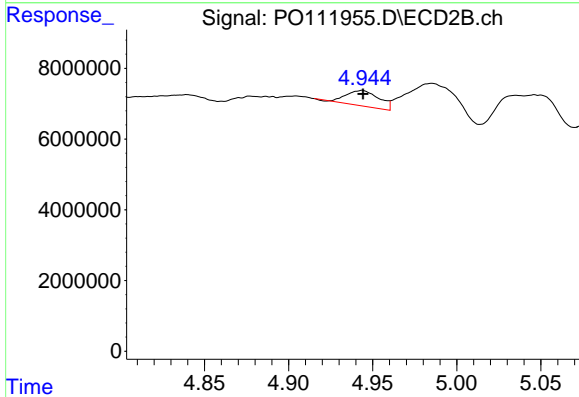
R.T.: 4.751 min
 Delta R.T.: -0.018 min
 Response: 26733776
 Conc: 202.85 ng/ml



#13 AR-1232-3

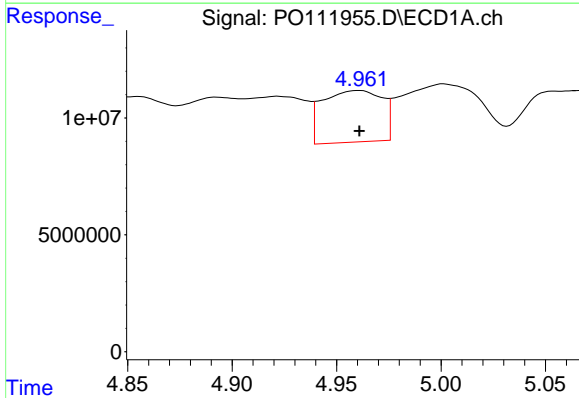
R.T.: 4.767 min
 Delta R.T.: -0.018 min
 Response: 61129195
 Conc: 375.30 ng/ml

Instrument :
 ECD_O
 ClientSampleId :
 OR-3-063025



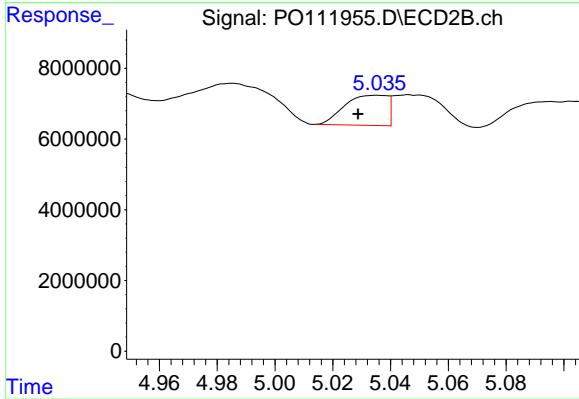
#13 AR-1232-3

R.T.: 4.944 min
 Delta R.T.: 0.000 min
 Response: 5947868
 Conc: 86.05 ng/ml



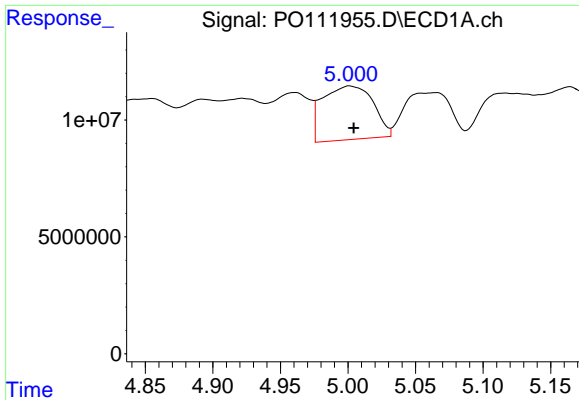
#14 AR-1232-4

R.T.: 4.961 min
 Delta R.T.: 0.000 min
 Response: 43738612
 Conc: 502.63 ng/ml



#14 AR-1232-4

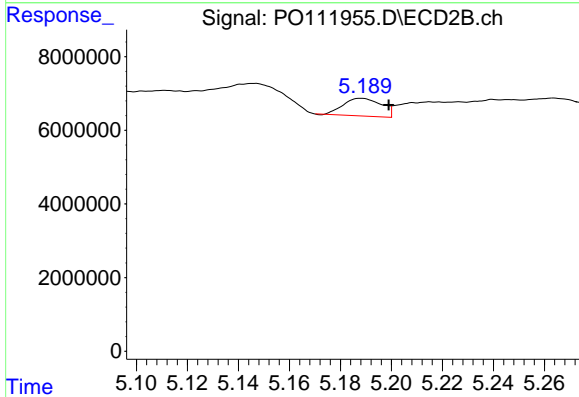
R.T.: 5.035 min
 Delta R.T.: 0.007 min
 Response: 8753789
 Conc: 144.73 ng/ml



#15 AR-1232-5

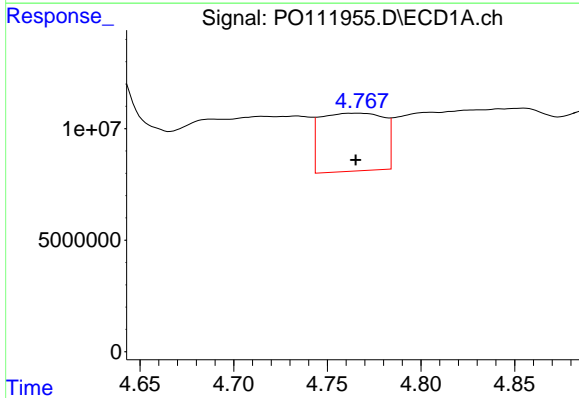
R.T.: 5.001 min
Delta R.T.: -0.003 min
Response: 59852727
Conc: 1057.83 ng/ml

Instrument :
ECD_O
ClientSampleId :
OR-3-063025



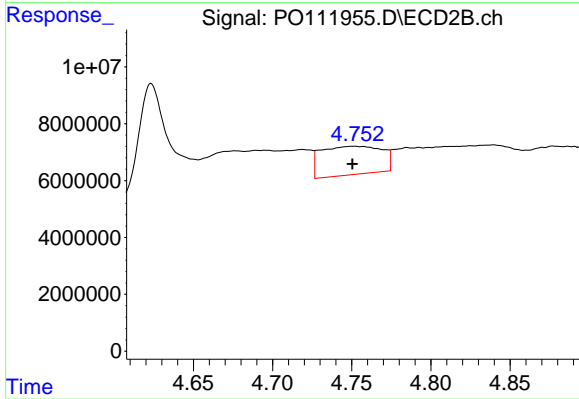
#15 AR-1232-5

R.T.: 5.188 min
Delta R.T.: -0.011 min
Response: 4985910
Conc: 75.07 ng/ml



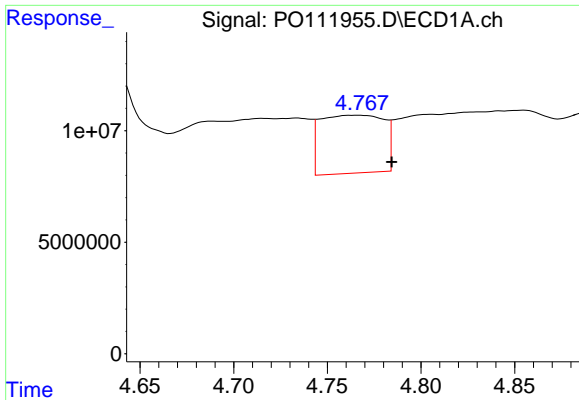
#16 AR-1242-1

R.T.: 4.767 min
Delta R.T.: 0.002 min
Response: 61129195
Conc: 303.46 ng/ml



#16 AR-1242-1

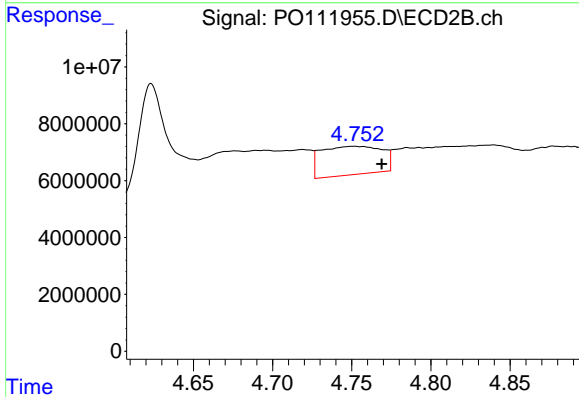
R.T.: 4.751 min
Delta R.T.: 0.000 min
Response: 26733776
Conc: 164.25 ng/ml



#17 AR-1242-2

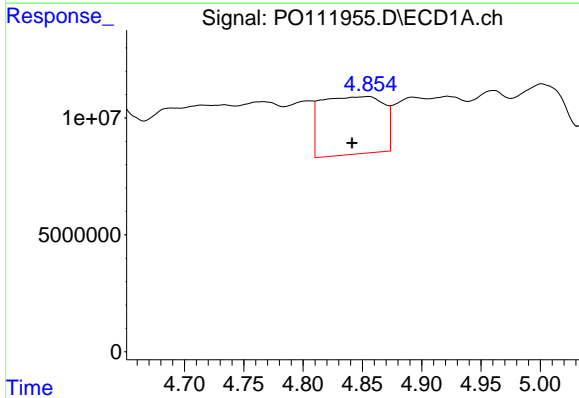
R.T.: 4.767 min
 Delta R.T.: -0.018 min
 Response: 61129195
 Conc: 216.95 ng/ml

Instrument :
 ECD_O
 ClientSampleId :
 OR-3-063025



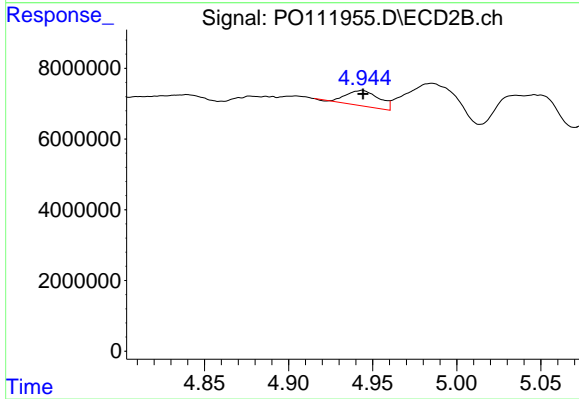
#17 AR-1242-2

R.T.: 4.751 min
 Delta R.T.: -0.018 min
 Response: 26733776
 Conc: 113.25 ng/ml



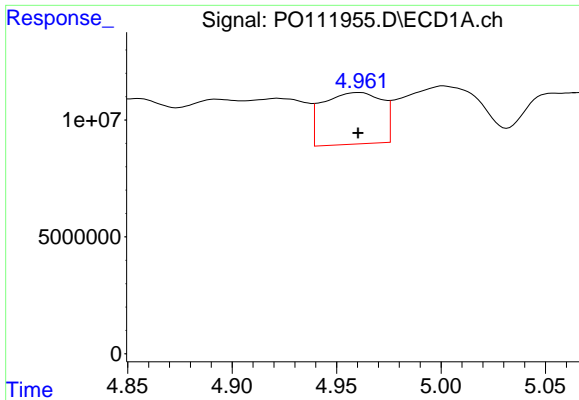
#18 AR-1242-3

R.T.: 4.855 min
 Delta R.T.: 0.014 min
 Response: 90315081
 Conc: 454.25 ng/ml



#18 AR-1242-3

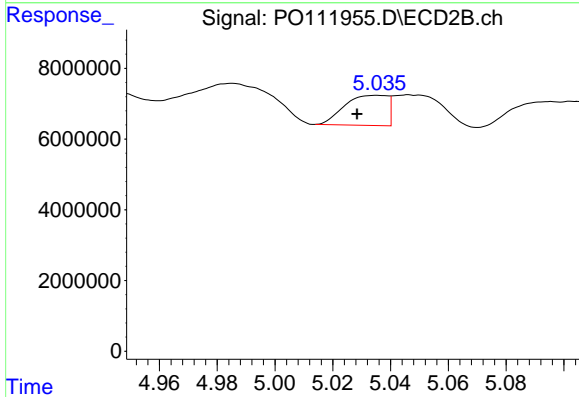
R.T.: 4.944 min
 Delta R.T.: 0.000 min
 Response: 5947868
 Conc: 47.36 ng/ml



#19 AR-1242-4

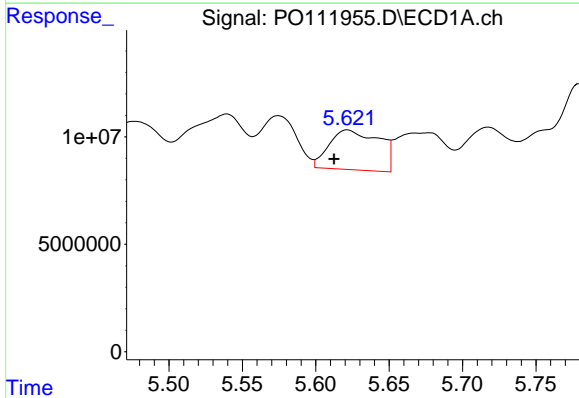
R.T.: 4.961 min
 Delta R.T.: 0.000 min
 Response: 43738612
 Conc: 276.48 ng/ml

Instrument :
 ECD_O
 ClientSampleId :
 OR-3-063025



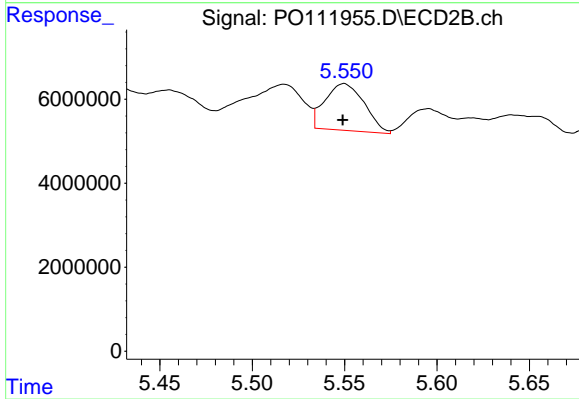
#19 AR-1242-4

R.T.: 5.035 min
 Delta R.T.: 0.007 min
 Response: 8753789
 Conc: 71.43 ng/ml



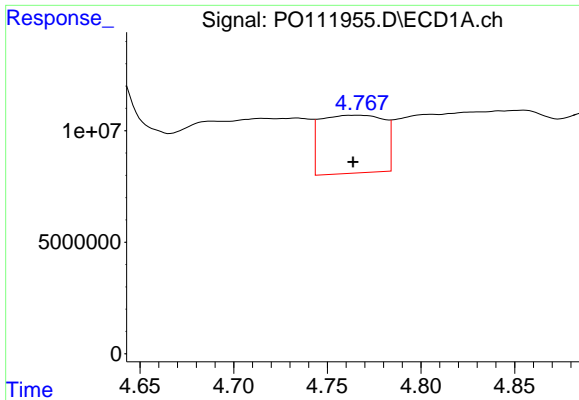
#20 AR-1242-5

R.T.: 5.622 min
 Delta R.T.: 0.009 min
 Response: 43685646
 Conc: 261.25 ng/ml



#20 AR-1242-5

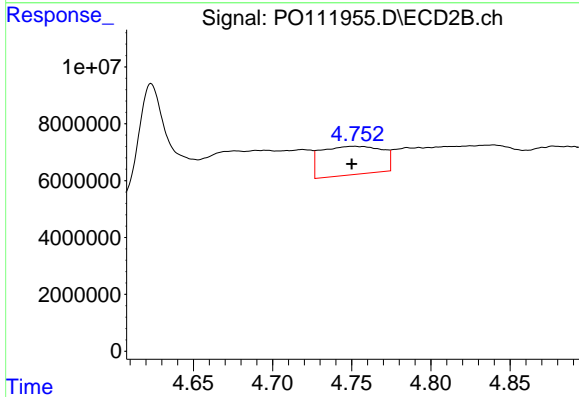
R.T.: 5.550 min
 Delta R.T.: 0.000 min
 Response: 16471155
 Conc: 109.89 ng/ml



#21 AR-1248-1

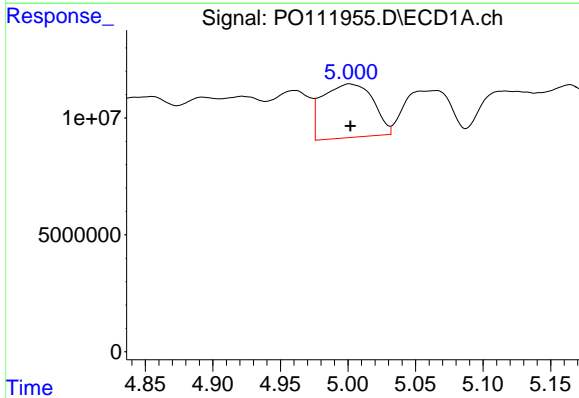
R.T.: 4.767 min
Delta R.T.: 0.003 min
Response: 61129195
Conc: 379.06 ng/ml

Instrument :
ECD_O
ClientSampleId :
OR-3-063025



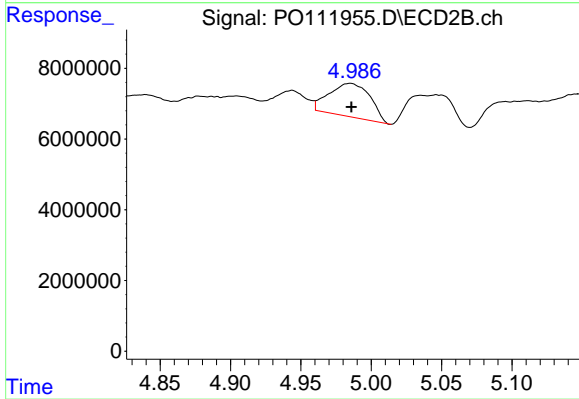
#21 AR-1248-1

R.T.: 4.751 min
Delta R.T.: 0.002 min
Response: 26733776
Conc: 200.58 ng/ml



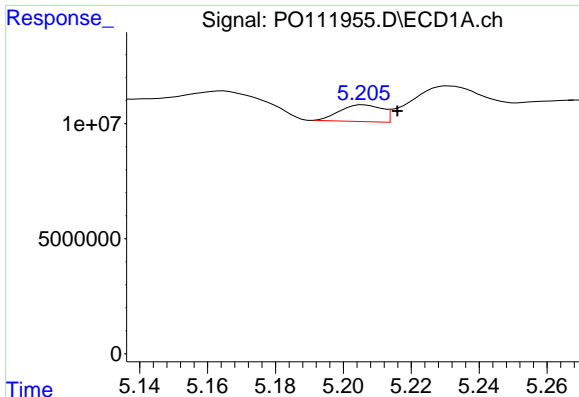
#22 AR-1248-2

R.T.: 5.001 min
Delta R.T.: 0.000 min
Response: 59852727
Conc: 277.60 ng/ml



#22 AR-1248-2

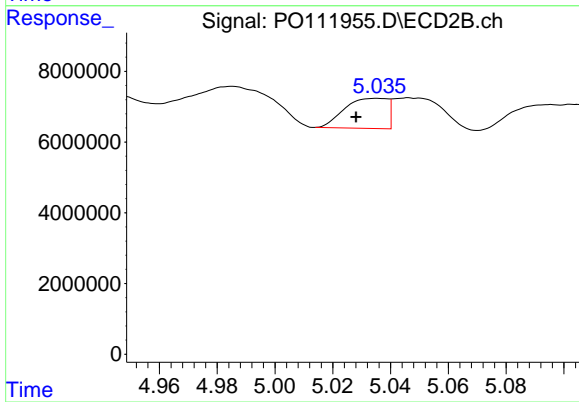
R.T.: 4.985 min
Delta R.T.: 0.000 min
Response: 19148888
Conc: 107.48 ng/ml



#23 AR-1248-3

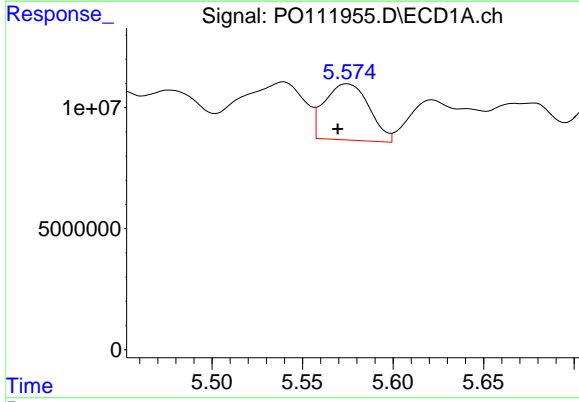
R.T.: 5.206 min
 Delta R.T.: -0.010 min
 Response: 6293616
 Conc: 23.33 ng/ml

Instrument :
 ECD_O
 ClientSampleId :
 OR-3-063025



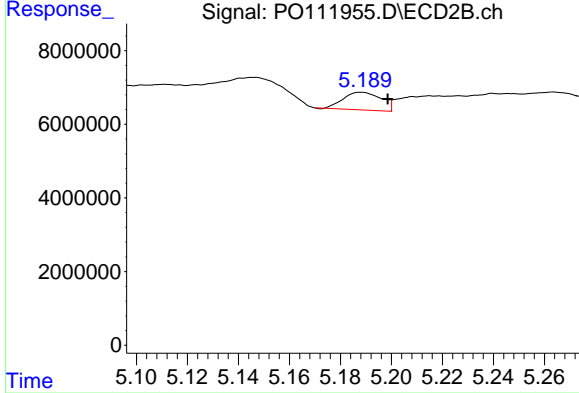
#23 AR-1248-3

R.T.: 5.035 min
 Delta R.T.: 0.007 min
 Response: 8753789
 Conc: 46.21 ng/ml



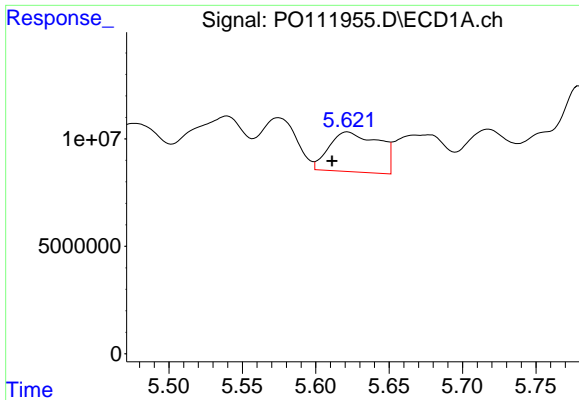
#24 AR-1248-4

R.T.: 5.575 min
 Delta R.T.: 0.005 min
 Response: 39671140
 Conc: 99.23 ng/ml



#24 AR-1248-4

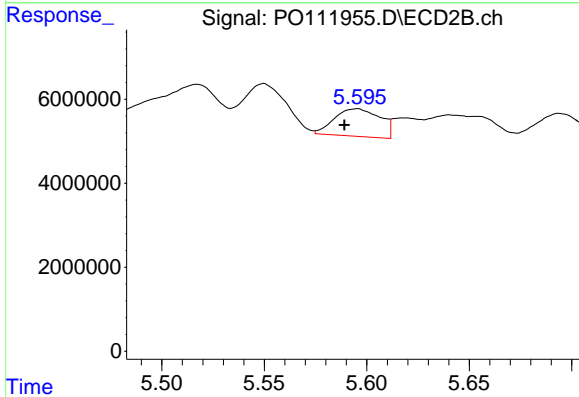
R.T.: 5.188 min
 Delta R.T.: -0.010 min
 Response: 4985910
 Conc: 21.84 ng/ml



#25 AR-1248-5

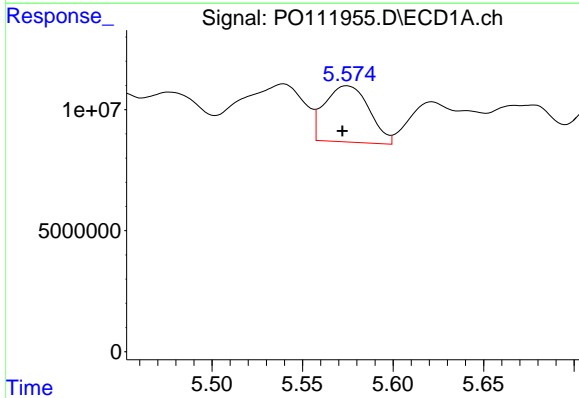
R.T.: 5.622 min
 Delta R.T.: 0.011 min
 Response: 43685646
 Conc: 155.57 ng/ml

Instrument :
 ECD_O
 ClientSampleId :
 OR-3-063025



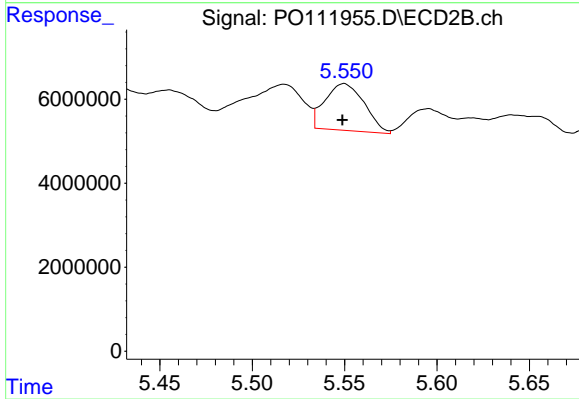
#25 AR-1248-5

R.T.: 5.595 min
 Delta R.T.: 0.006 min
 Response: 10205842
 Conc: 46.87 ng/ml



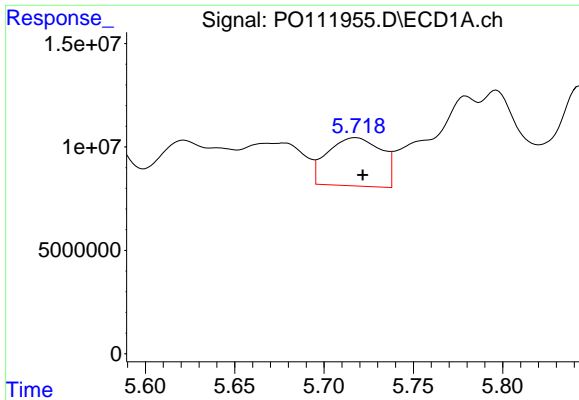
#26 AR-1254-1

R.T.: 5.575 min
 Delta R.T.: 0.003 min
 Response: 39671140
 Conc: 93.33 ng/ml



#26 AR-1254-1

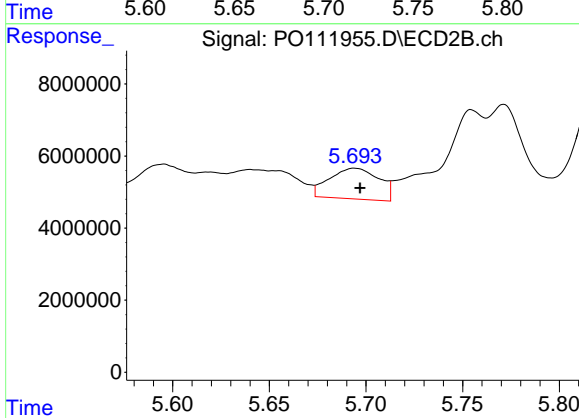
R.T.: 5.550 min
 Delta R.T.: 0.000 min
 Response: 16471155
 Conc: 50.99 ng/ml



#27 AR-1254-2

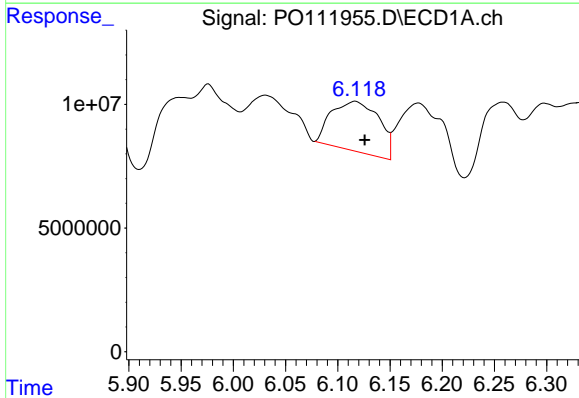
R.T.: 5.718 min
 Delta R.T.: -0.004 min
 Response: 48899491
 Conc: 128.84 ng/ml

Instrument :
 ECD_O
 ClientSampleId :
 OR-3-063025



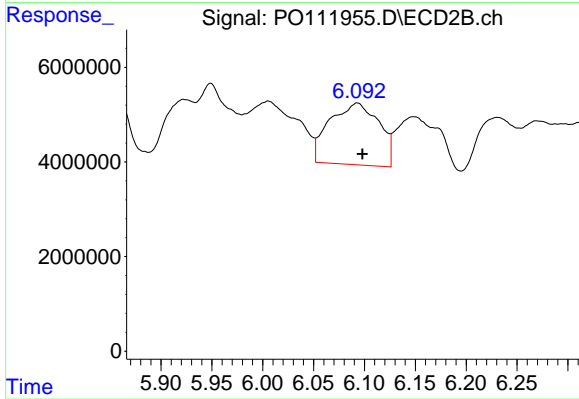
#27 AR-1254-2

R.T.: 5.694 min
 Delta R.T.: -0.003 min
 Response: 15209774
 Conc: 54.45 ng/ml



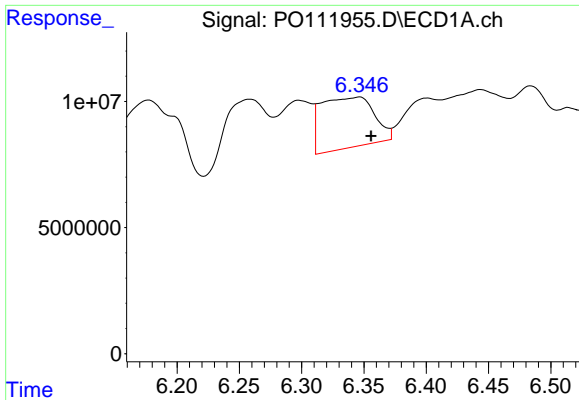
#28 AR-1254-3

R.T.: 6.117 min
 Delta R.T.: -0.009 min
 Response: 63767143
 Conc: 111.61 ng/ml



#28 AR-1254-3

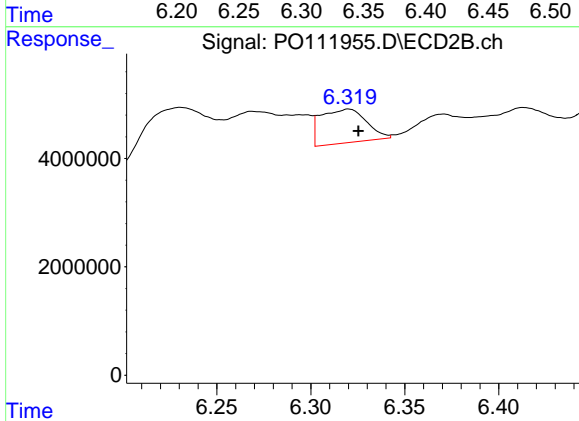
R.T.: 6.093 min
 Delta R.T.: -0.005 min
 Response: 43930707
 Conc: 104.83 ng/ml



#29 AR-1254-4

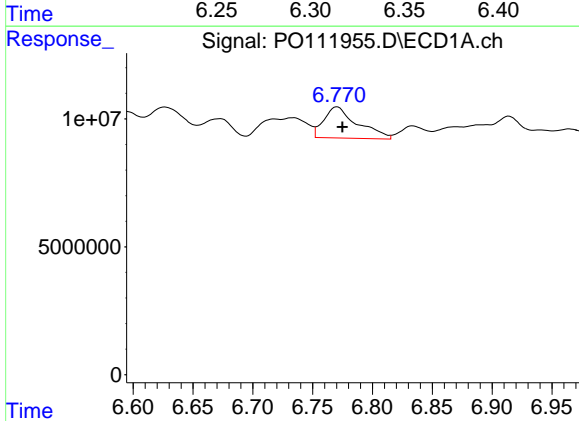
R.T.: 6.346 min
 Delta R.T.: -0.010 min
 Response: 59404998
 Conc: 170.27 ng/ml

Instrument :
 ECD_O
 ClientSampleId :
 OR-3-063025



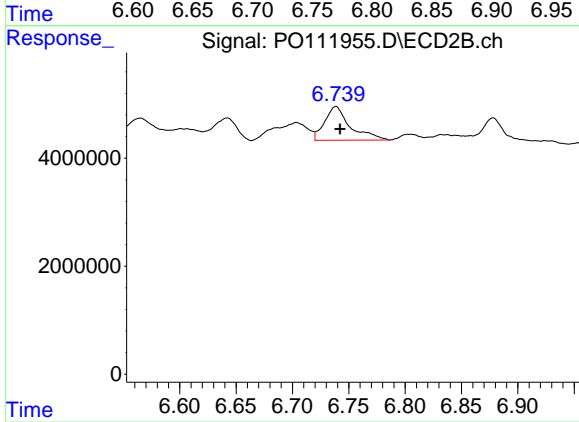
#29 AR-1254-4

R.T.: 6.320 min
 Delta R.T.: -0.005 min
 Response: 10517156
 Conc: 46.17 ng/ml



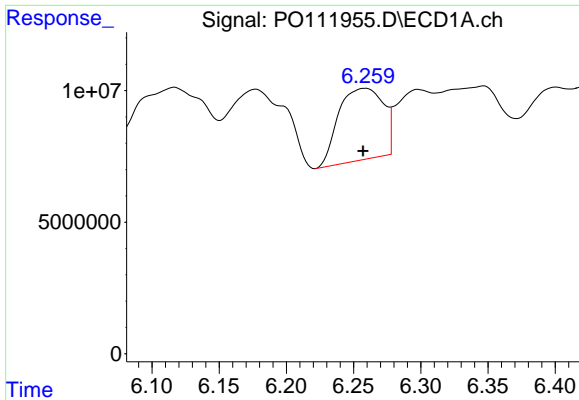
#30 AR-1254-5

R.T.: 6.770 min
 Delta R.T.: -0.004 min
 Response: 23781300
 Conc: 46.44 ng/ml



#30 AR-1254-5

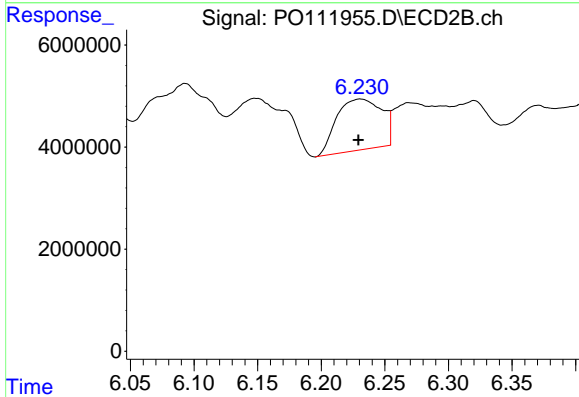
R.T.: 6.739 min
 Delta R.T.: -0.004 min
 Response: 9867954
 Conc: 30.31 ng/ml



#31 AR-1260-1

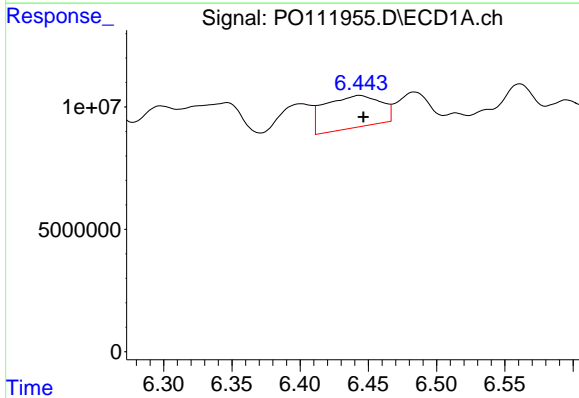
R.T.: 6.258 min
 Delta R.T.: 0.001 min
 Response: 62538495
 Conc: 176.01 ng/ml

Instrument :
 ECD_O
 ClientSampleId :
 OR-3-063025



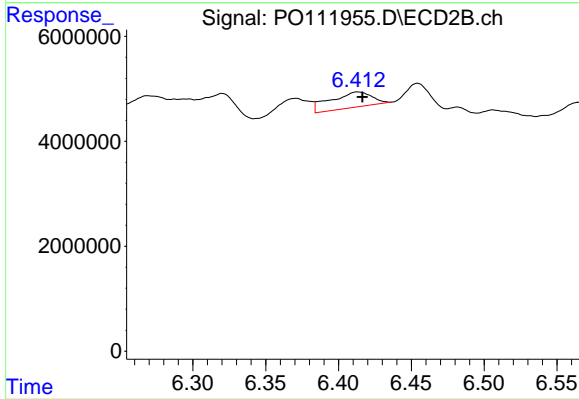
#31 AR-1260-1

R.T.: 6.231 min
 Delta R.T.: 0.001 min
 Response: 24634399
 Conc: 98.18 ng/ml



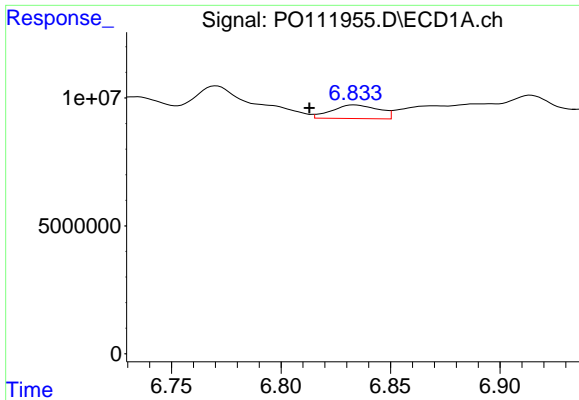
#32 AR-1260-2

R.T.: 6.444 min
 Delta R.T.: -0.003 min
 Response: 37397108
 Conc: 79.15 ng/ml



#32 AR-1260-2

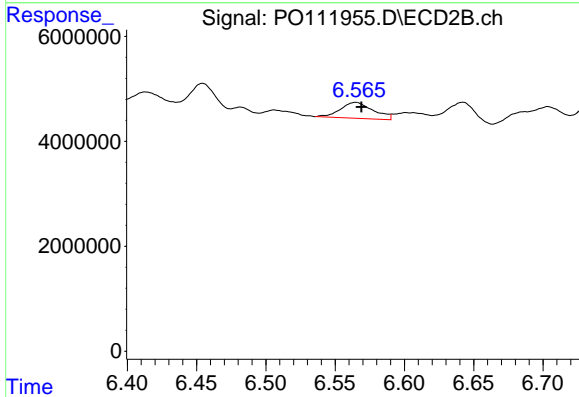
R.T.: 6.413 min
 Delta R.T.: -0.003 min
 Response: 5795370
 Conc: 19.71 ng/ml



#33 AR-1260-3

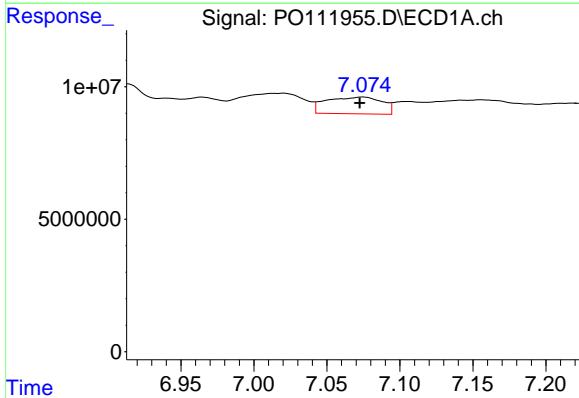
R.T.: 6.834 min
 Delta R.T.: 0.021 min
 Response: 7877757
 Conc: 18.55 ng/ml

Instrument :
 ECD_O
 ClientSampleId :
 OR-3-063025



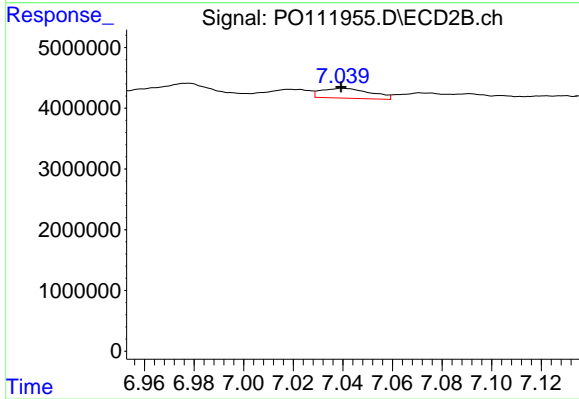
#33 AR-1260-3

R.T.: 6.565 min
 Delta R.T.: -0.004 min
 Response: 5027031
 Conc: 18.82 ng/ml



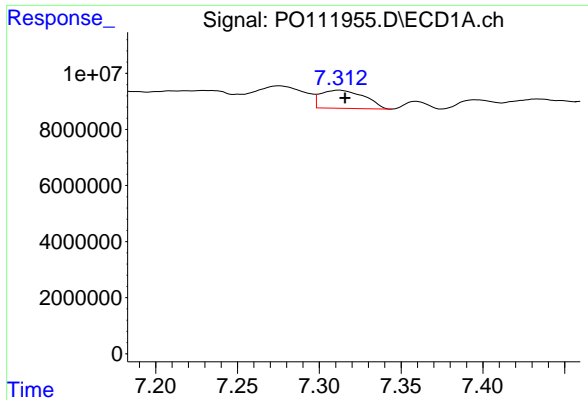
#34 AR-1260-4

R.T.: 7.075 min
 Delta R.T.: 0.002 min
 Response: 16828200
 Conc: 53.52 ng/ml



#34 AR-1260-4

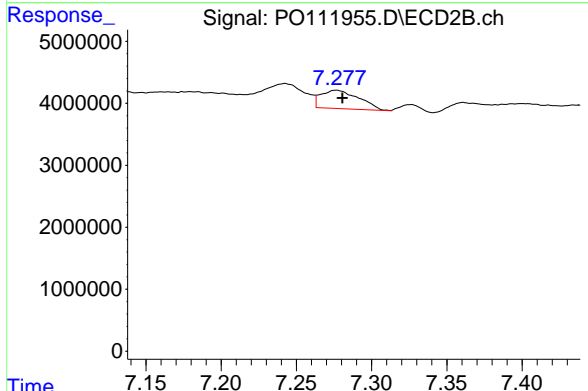
R.T.: 7.040 min
 Delta R.T.: 0.000 min
 Response: 2229898
 Conc: 11.73 ng/ml



#35 AR-1260-5

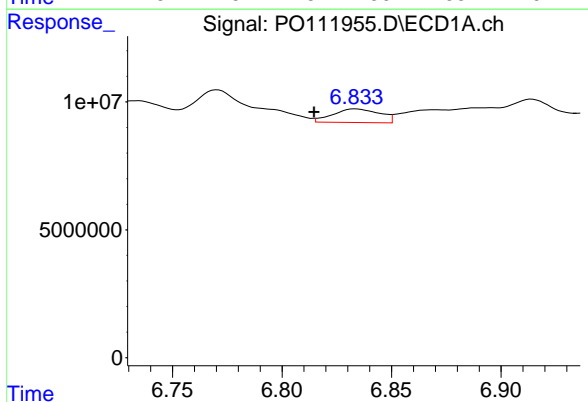
R.T.: 7.312 min
 Delta R.T.: -0.003 min
 Response: 12069749
 Conc: 14.65 ng/ml

Instrument :
 ECD_O
 ClientSampleId :
 OR-3-063025



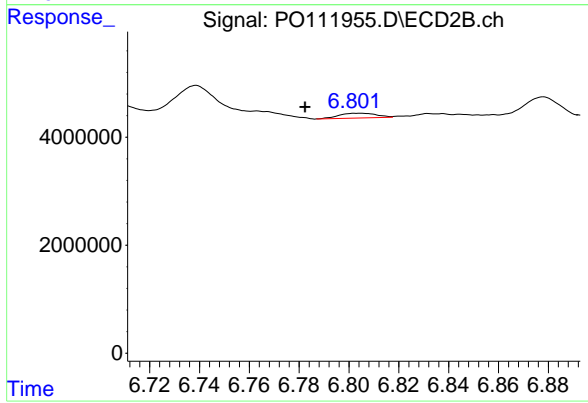
#35 AR-1260-5

R.T.: 7.276 min
 Delta R.T.: -0.004 min
 Response: 5186197
 Conc: 12.20 ng/ml



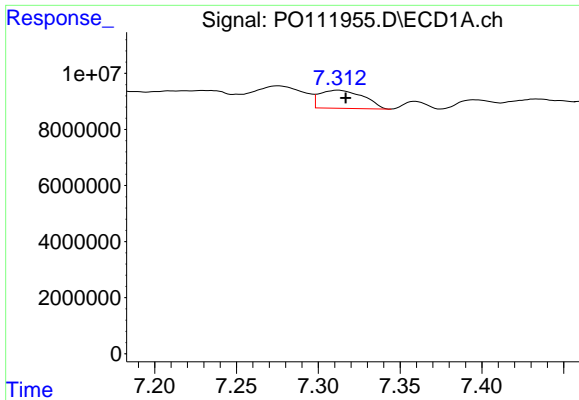
#36 AR-1262-1

R.T.: 6.834 min
 Delta R.T.: 0.019 min
 Response: 7877757
 Conc: 12.92 ng/ml



#36 AR-1262-1

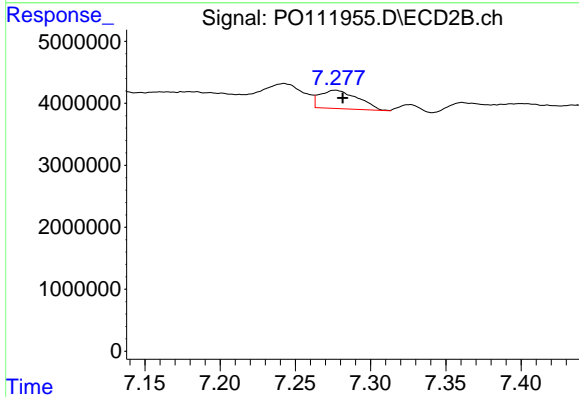
R.T.: 6.804 min
 Delta R.T.: 0.022 min
 Response: 921879
 Conc: 2.73 ng/ml



#37 AR-1262-2

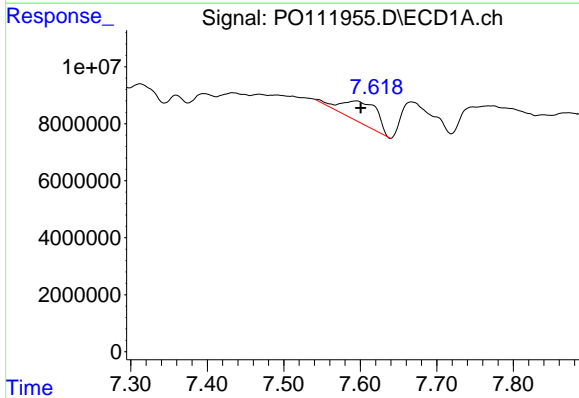
R.T.: 7.312 min
 Delta R.T.: -0.005 min
 Response: 12069749
 Conc: 12.82 ng/ml

Instrument :
 ECD_O
 ClientSampleId :
 OR-3-063025



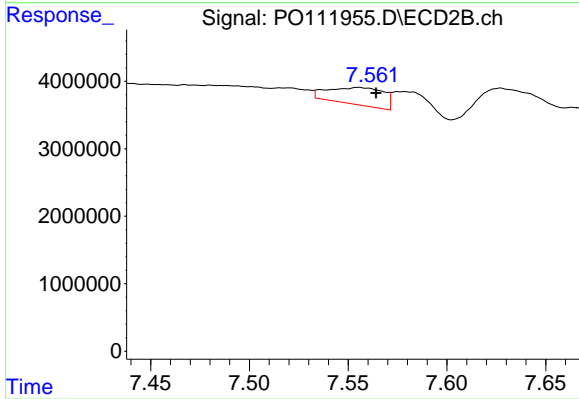
#37 AR-1262-2

R.T.: 7.276 min
 Delta R.T.: -0.005 min
 Response: 5186197
 Conc: 11.13 ng/ml



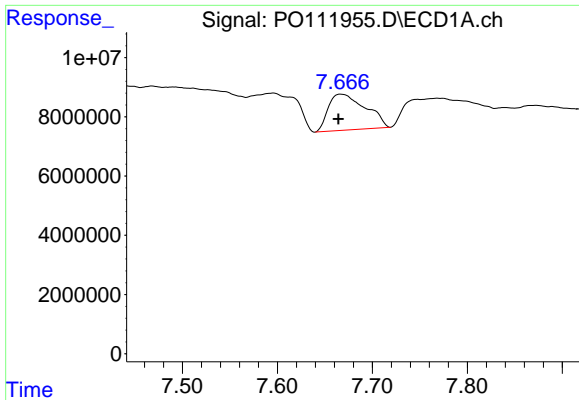
#38 AR-1262-3

R.T.: 7.595 min
 Delta R.T.: -0.006 min
 Response: 24755193
 Conc: 62.41 ng/ml



#38 AR-1262-3

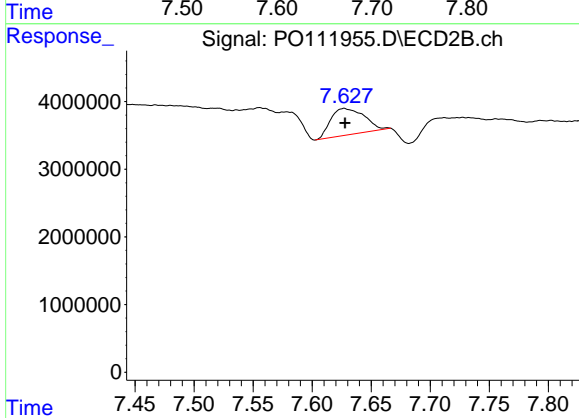
R.T.: 7.555 min
 Delta R.T.: -0.009 min
 Response: 4969576
 Conc: 29.89 ng/ml



#39 AR-1262-4

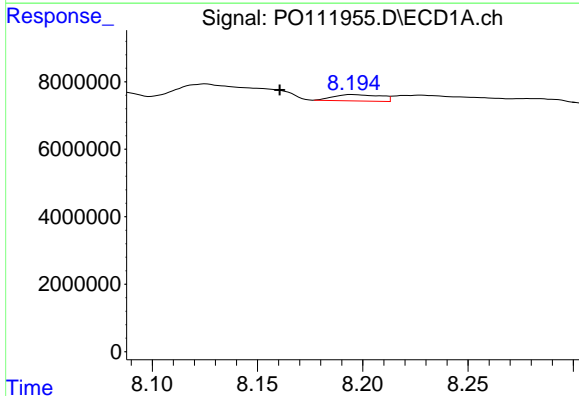
R.T.: 7.667 min
 Delta R.T.: 0.003 min
 Response: 33075504
 Conc: 50.34 ng/ml

Instrument :
 ECD_O
 ClientSampleId :
 OR-3-063025



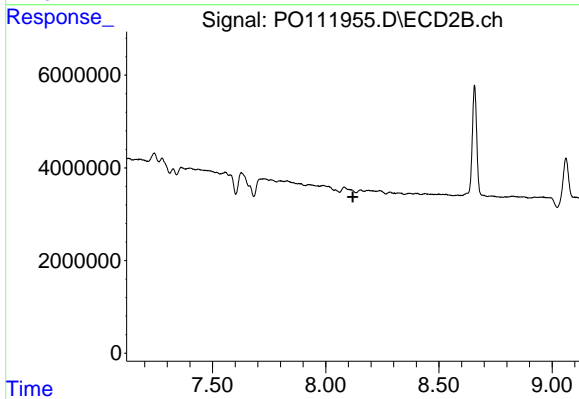
#39 AR-1262-4

R.T.: 7.627 min
 Delta R.T.: 0.000 min
 Response: 7560504
 Conc: 27.29 ng/ml



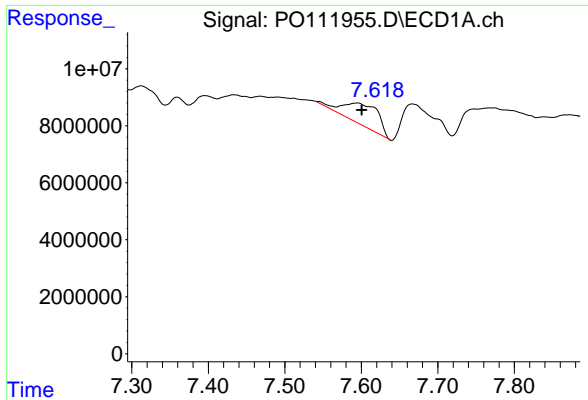
#40 AR-1262-5

R.T.: 8.195 min
 Delta R.T.: 0.035 min
 Response: 2896920
 Conc: 9.51 ng/ml



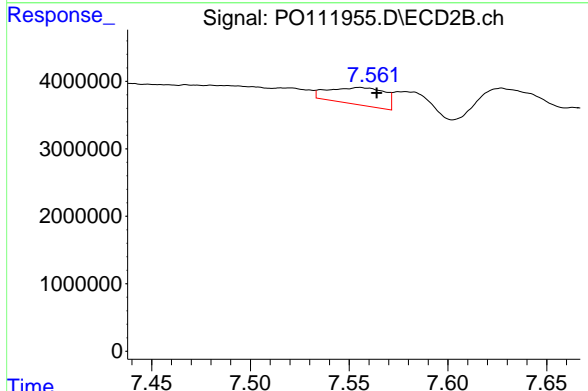
#40 AR-1262-5

R.T.: 8.153 min
 Delta R.T.: 0.033 min
 Response: -286427
 Conc: N.D.

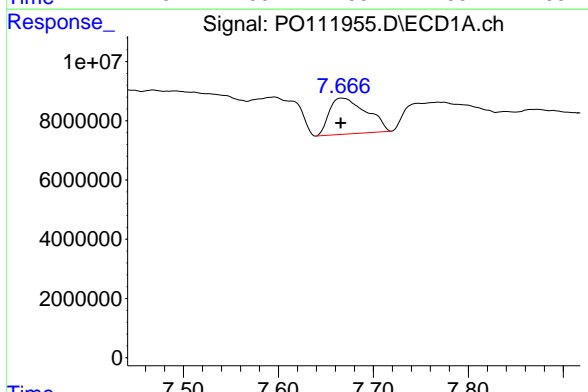


#41 AR-1268-1
 R.T.: 7.595 min
 Delta R.T.: -0.006 min
 Response: 24755193
 Conc: 21.97 ng/ml

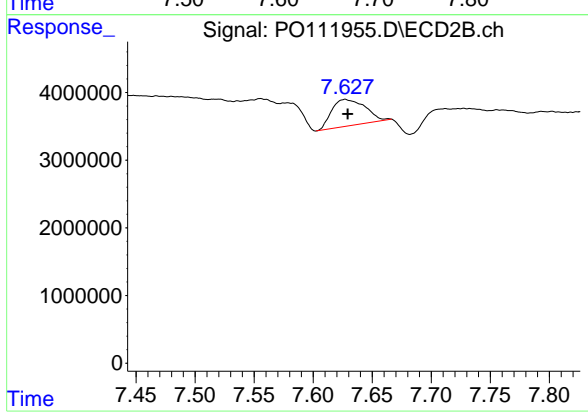
Instrument :
 ECD_O
 ClientSampleId :
 OR-3-063025



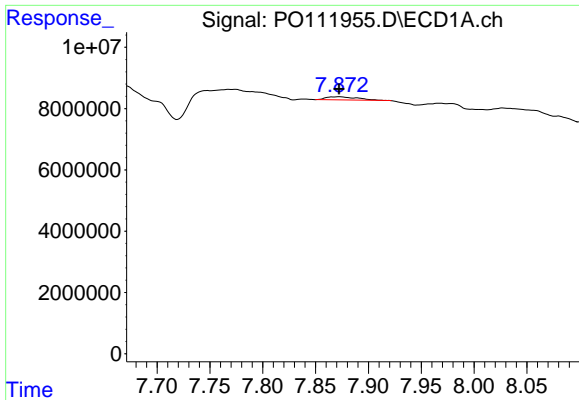
#41 AR-1268-1
 R.T.: 7.555 min
 Delta R.T.: -0.009 min
 Response: 4969576
 Conc: 10.39 ng/ml



#42 AR-1268-2
 R.T.: 7.667 min
 Delta R.T.: 0.002 min
 Response: 33075504
 Conc: 33.85 ng/ml



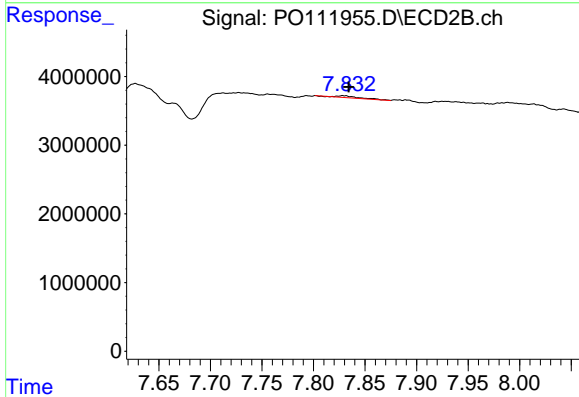
#42 AR-1268-2
 R.T.: 7.627 min
 Delta R.T.: -0.002 min
 Response: 7560504
 Conc: 18.15 ng/ml



#43 AR-1268-3

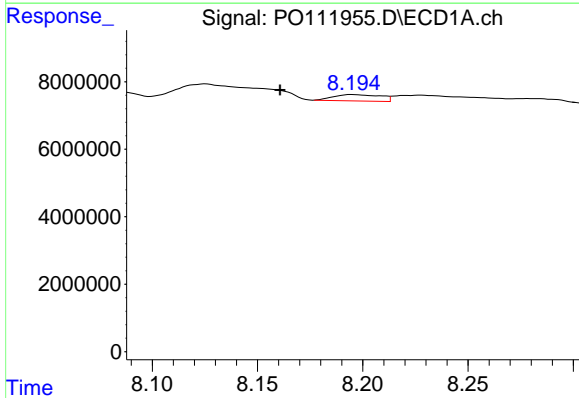
R.T.: 7.872 min
 Delta R.T.: 0.000 min
 Response: 2078072
 Conc: 2.54 ng/ml

Instrument :
 ECD_O
 ClientSampleId :
 OR-3-063025



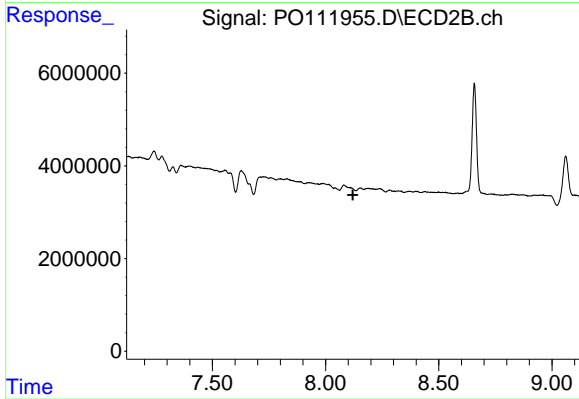
#43 AR-1268-3

R.T.: 7.829 min
 Delta R.T.: -0.005 min
 Response: 366957
 Conc: 1.16 ng/ml



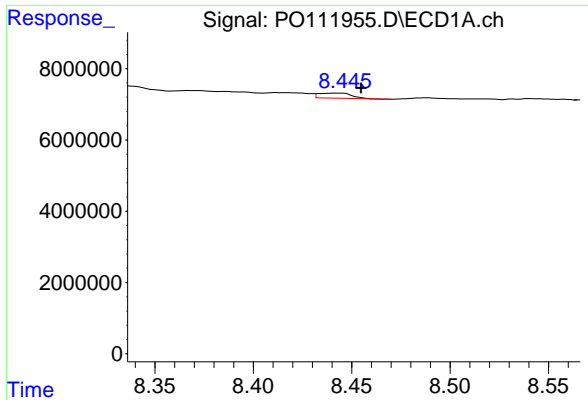
#44 AR-1268-4

R.T.: 8.195 min
 Delta R.T.: 0.035 min
 Response: 2896920
 Conc: 8.42 ng/ml



#44 AR-1268-4

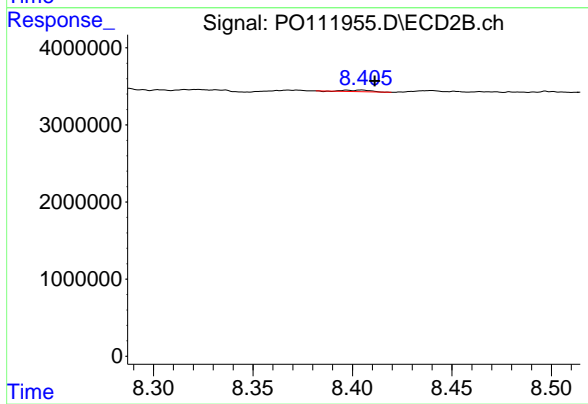
R.T.: 8.153 min
 Delta R.T.: 0.032 min
 Response: -286427
 Conc: N.D.



#45 AR-1268-5

R.T.: 8.443 min
 Delta R.T.: -0.012 min
 Response: 1633342
 Conc: 0.74 ng/ml

Instrument :
 ECD_O
 ClientSampleId :
 OR-3-063025



#45 AR-1268-5

R.T.: 8.405 min
 Delta R.T.: -0.007 min
 Response: 169951
 Conc: 0.23 ng/ml