

Data Path : Z:\pestpcbsrv\HPCHEM1\ECD\_0\Data\P0070125\  
 Data File : P0111963.D  
 Signal(s) : Signal #1: ECD1A.ch Signal #2: ECD2B.ch  
 Acq On : 02 Jul 2025 03:49  
 Operator : YP/AJ  
 Sample : AR1254CCC500  
 Misc :  
 ALS Vial : 6 Sample Multiplier: 1

**Instrument :**  
 ECD\_0  
**ClientSampleId :**  
 AR1254CCC500

**Manual Integrations**  
**APPROVED**  
 Reviewed By :Yogesh Patel 07/02/2025  
 Supervised By :mohammad ahmed 07/04/2025

Integration File signal 1: autoint1.e  
 Integration File signal 2: autoint2.e  
 Quant Time: Jul 02 05:27:19 2025  
 Quant Method : Z:\pestpcbsrv\HPCHEM1\ECD\_0\methods\P0061125.M  
 Quant Title : GC EXTRACTABLES  
 QLast Update : Thu Jun 12 06:25:26 2025  
 Response via : Initial Calibration  
 Integrator: ChemStation

Volume Inj. : 2 µl  
 Signal #1 Phase : ZB-MR1 Signal #2 Phase: ZB-MR2  
 Signal #1 Info : 30Mx0.32mmx 0.50µ Signal #2 Info : 30M x 0.32mm x 0.25µm

Compound	RT#1	RT#2	Resp#1	Resp#2	ng/ml	ng/ml
-----						
System Monitoring Compounds						
1) SA Tetrachlo...	3.676	3.693	307.9E6	284.6E6	53.465	50.666m
2) SA Decachlor...	8.709	8.678	238.3E6	85772893	45.390	48.250m
Target Compounds						
26) L6 AR-1254-1	5.570	5.568	210.0E6	172.2E6	493.953	532.992m
27) L6 AR-1254-2	5.719	5.716	181.9E6	144.6E6	479.286	517.817
28) L6 AR-1254-3	6.123	6.117	288.0E6	215.1E6	504.067	513.413
29) L6 AR-1254-4	6.353	6.345	203.3E6	129.6E6	582.796	568.829
30) L6 AR-1254-5	6.771	6.761	273.3E6	163.0E6	533.647	500.720
-----						

(f)=RT Delta > 1/2 Window (#)=Amounts differ by > 25% (m)=manual int.

Data Path : Z:\pestpcbsrv\HPCHEM1\ECD\_O\Data\P0070125\  
 Data File : P0111963.D  
 Signal(s) : Signal #1: ECD1A.ch Signal #2: ECD2B.ch  
 Acq On : 02 Jul 2025 03:49  
 Operator : YP/AJ  
 Sample : AR1254CCC500  
 Misc :  
 ALS Vial : 6 Sample Multiplier: 1

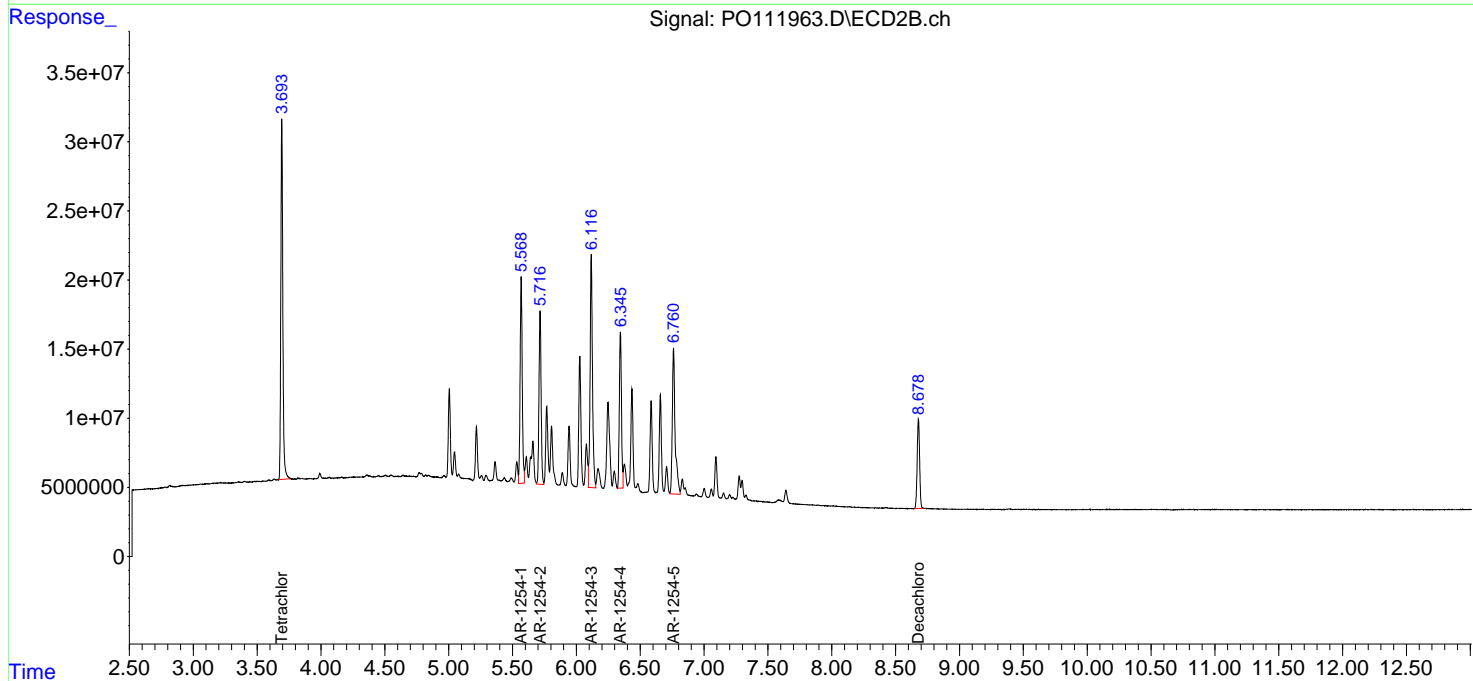
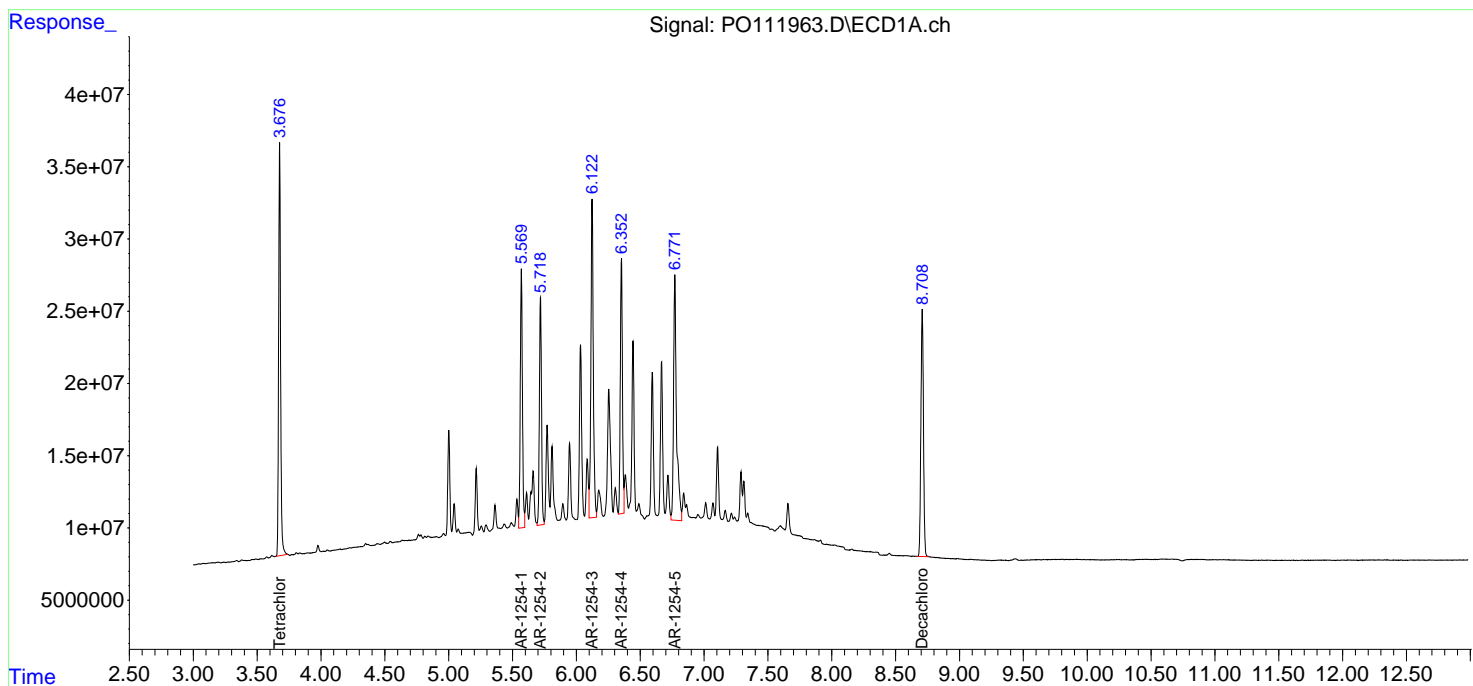
Instrument :  
 ECD\_O  
 ClientSampleId :  
 AR1254CCC500

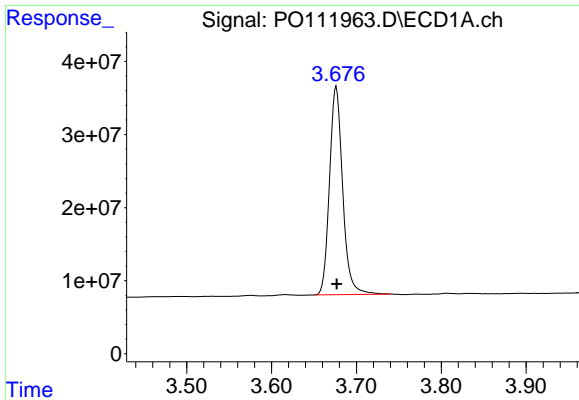
Manual Integrations  
**APPROVED**

Reviewed By :Yogesh Patel 07/02/2025  
 Supervised By :mohammad ahmed 07/04/2025

Integration File signal 1: autoint1.e  
 Integration File signal 2: autoint2.e  
 Quant Time: Jul 02 05:27:19 2025  
 Quant Method : Z:\pestpcbsrv\HPCHEM1\ECD\_O\methods\P0061125.M  
 Quant Title : GC EXTRACTABLES  
 QLast Update : Thu Jun 12 06:25:26 2025  
 Response via : Initial Calibration  
 Integrator: ChemStation

Volume Inj. : 2 µl  
 Signal #1 Phase : ZB-MR1 Signal #2 Phase: ZB-MR2  
 Signal #1 Info : 30Mx0.32mmx 0.50µ Signal #2 Info : 30M x 0.32mm x 0.25µm





#1 Tetrachloro-m-xylene

R.T.: 3.676 min  
 Delta R.T.: 0.000 min  
 Response: 307924524  
 Conc: 53.46 ng/ml

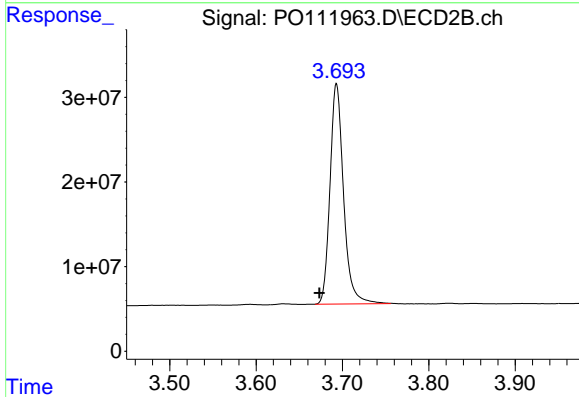
Instrument :

ECD\_O

ClientSampleId :  
 AR1254CCC500

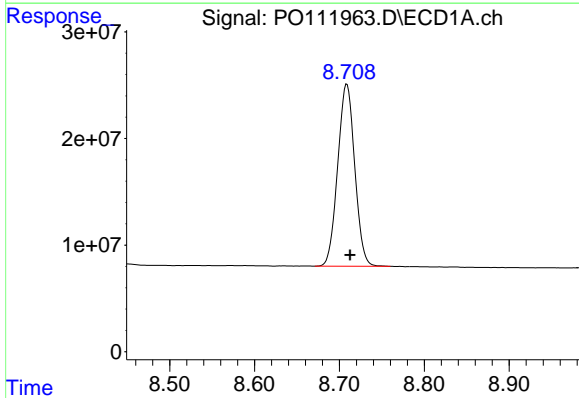
Manual Integrations  
 APPROVED

Reviewed By :Yogesh Patel 07/02/2025  
 Supervised By :mohammad ahmed 07/04/2025



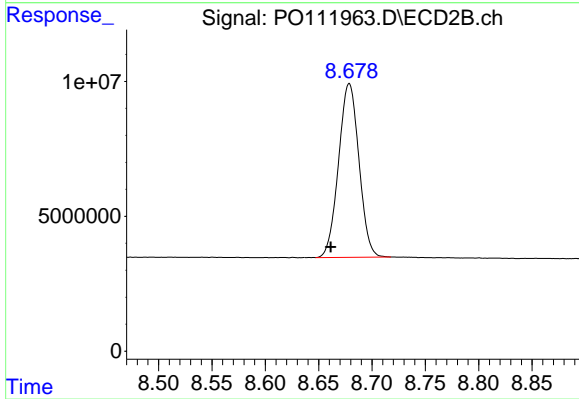
#1 Tetrachloro-m-xylene

R.T.: 3.693 min  
 Delta R.T.: 0.019 min  
 Response: 284604755  
 Conc: 50.67 ng/ml m



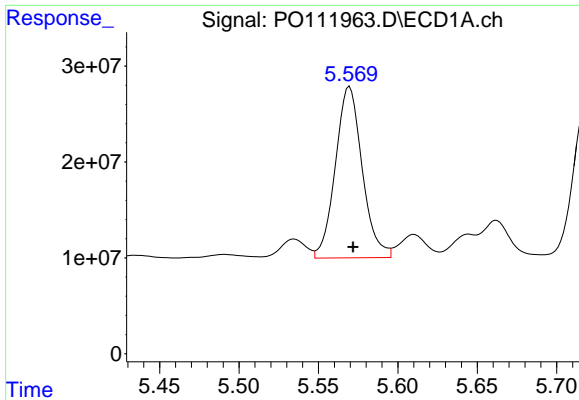
#2 Decachlorobiphenyl

R.T.: 8.709 min  
 Delta R.T.: -0.004 min  
 Response: 238263476  
 Conc: 45.39 ng/ml



#2 Decachlorobiphenyl

R.T.: 8.678 min  
 Delta R.T.: 0.017 min  
 Response: 85772893  
 Conc: 48.25 ng/ml m



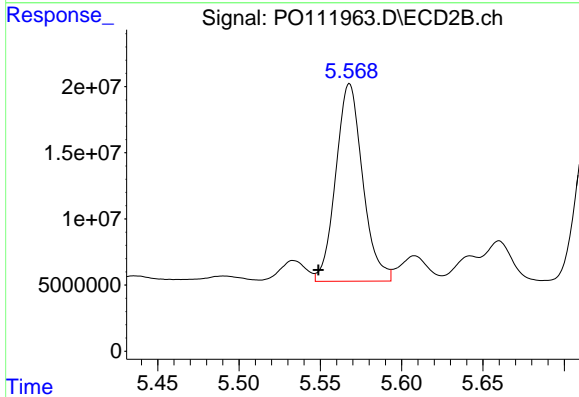
#26 AR-1254-1

R.T.: 5.570 min  
 Delta R.T.: -0.002 min  
 Response: 209965126  
 Conc: 493.95 ng/ml

Instrument :  
 ECD\_O  
 ClientSampleId :  
 AR1254CCC500

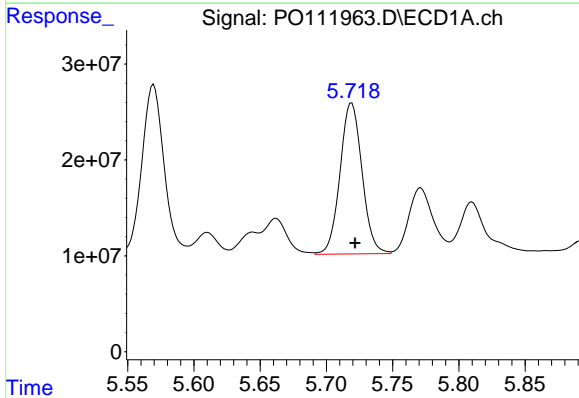
Manual Integrations  
 APPROVED

Reviewed By :Yogesh Patel 07/02/2025  
 Supervised By :mohammad ahmed 07/04/2025



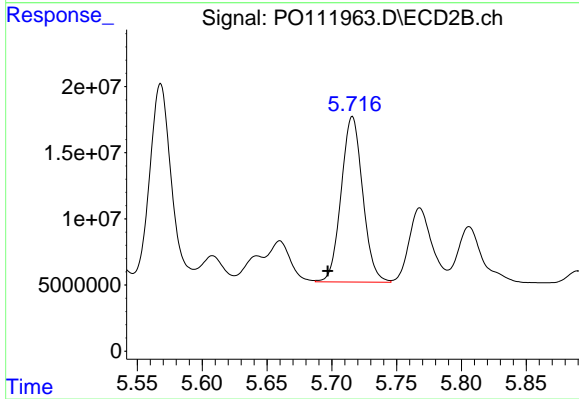
#26 AR-1254-1

R.T.: 5.568 min  
 Delta R.T.: 0.019 min  
 Response: 172160900  
 Conc: 532.99 ng/ml m



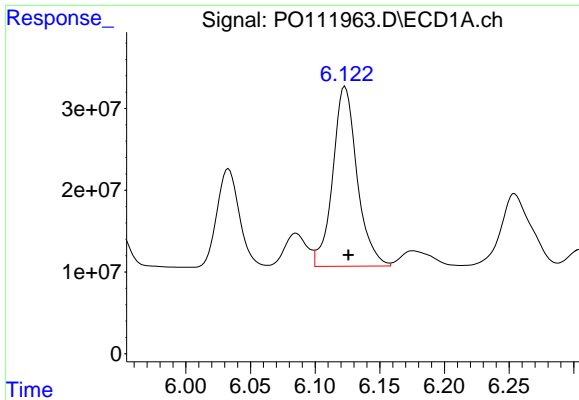
#27 AR-1254-2

R.T.: 5.719 min  
 Delta R.T.: -0.002 min  
 Response: 181902694  
 Conc: 479.29 ng/ml



#27 AR-1254-2

R.T.: 5.716 min  
 Delta R.T.: 0.019 min  
 Response: 144633279  
 Conc: 517.82 ng/ml



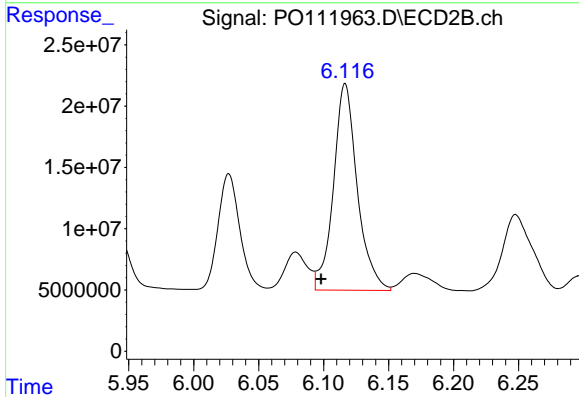
#28 AR-1254-3

R.T.: 6.123 min  
 Delta R.T.: -0.003 min  
 Response: 287997435  
 Conc: 504.07 ng/ml

Instrument :  
 ECD\_O  
 ClientSampleId :  
 AR1254CCC500

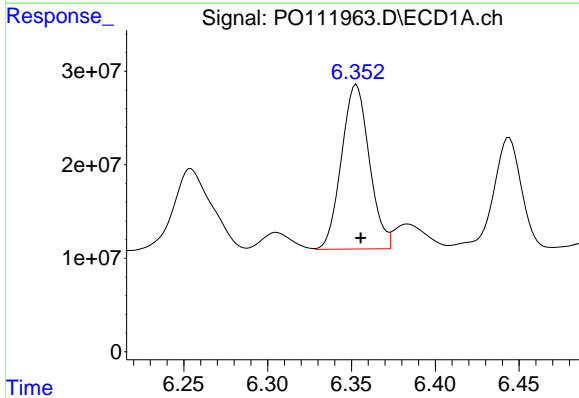
Manual Integrations  
 APPROVED

Reviewed By :Yogesh Patel 07/02/2025  
 Supervised By :mohammad ahmed 07/04/2025



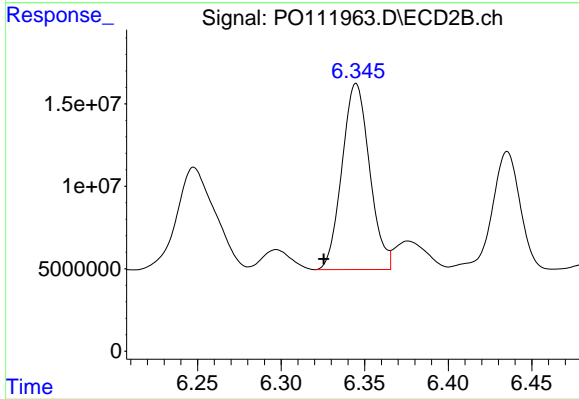
#28 AR-1254-3

R.T.: 6.117 min  
 Delta R.T.: 0.019 min  
 Response: 215147361  
 Conc: 513.41 ng/ml



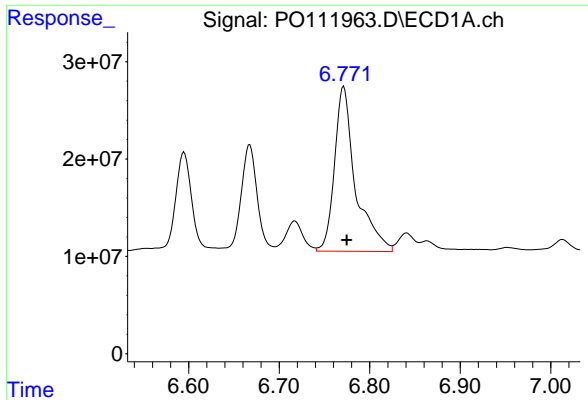
#29 AR-1254-4

R.T.: 6.353 min  
 Delta R.T.: -0.003 min  
 Response: 203327500  
 Conc: 582.80 ng/ml



#29 AR-1254-4

R.T.: 6.345 min  
 Delta R.T.: 0.020 min  
 Response: 129580150  
 Conc: 568.83 ng/ml



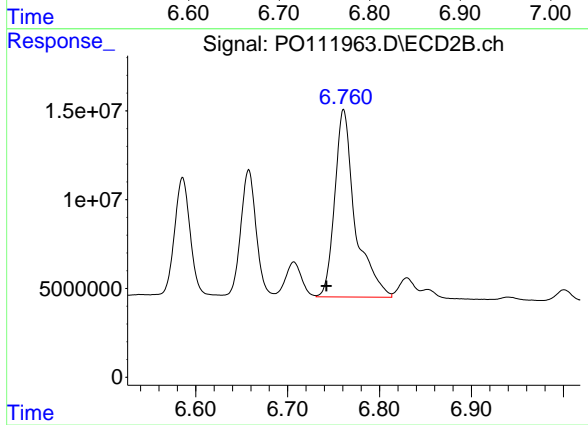
#30 AR-1254-5

R.T.: 6.771 min  
Delta R.T.: -0.004 min  
Response: 273296762  
Conc: 533.65 ng/ml

Instrument :  
ECD\_O  
ClientSampleId :  
AR1254CCC500

Manual Integrations  
APPROVED

Reviewed By :Yogesh Patel 07/02/2025  
Supervised By :mohammad ahmed 07/04/2025



#30 AR-1254-5

R.T.: 6.761 min  
Delta R.T.: 0.019 min  
Response: 163029723  
Conc: 500.72 ng/ml