

Data Path : Z:\pestpcbsrv\HPCHEM1\ECD O\Data\PO070218\  
 Data File : PO046421.D  
 Signal(s) : Signal #1: ECD1A.CH Signal #2: ECD2B.CH  
 Acq On : 02 Jul 2018 10:06  
 Operator : SM/UA  
 Sample : AR1660ICC500  
 Misc :  
 ALS Vial : 5 Sample Multiplier: 1

Instrument :  
 ECD\_O  
 ClientSampleId :  
 AR1660ICC500

Integration File signal 1: autoint1.e  
 Integration File signal 2: autoint2.e  
 Quant Time: Jul 02 10:32:45 2018  
 Quant Method : Z:\pestpcbsrv\HPCHEM1\ECD\_O\methods\PO070118.M  
 Quant Title : GC EXTRACTABLES  
 QLast Update : Mon Jul 02 10:24:37 2018  
 Response via : Initial Calibration  
 Integrator: ChemStation 6890 Scale Mode: Small noise peaks clipped

Volume Inj. : 2 µl  
 Signal #1 Phase : ZB-MR1 Signal #2 Phase: ZB-MR2  
 Signal #1 Info : 30Mx0.32mmx 0.50µ Signal #2 Info : 30M x 0.32mm x 0.25µm

Compound	RT#1	RT#2	Resp#1	Resp#2	ng/ml	ng/ml
-----						
System Monitoring Compounds						
1) SA Tetrachlo...	4.380	3.606	14133138	5145639	50.000	50.000
2) SA Decachlor...	10.039	8.563	13321969	4565107	50.000	50.000
Target Compounds						
3) L1 AR-1016-1	5.273	4.463	3230079	1354310	500.000	500.000
4) L1 AR-1016-2	5.622	4.916	4306008	1120485	500.000	500.000
5) L1 AR-1016-3	5.720	4.957	3564894	1346436	500.000	500.000
6) L1 AR-1016-4	6.153	5.128	3788676	1557818	500.000	500.000
7) L1 AR-1016-5	6.387	5.476	3271991	1530917	500.000	500.000
31) L7 AR-1260-1	7.132	6.152	7056539	3070946	500.000	500.000
32) L7 AR-1260-2	7.387	6.338	8532105	3731032	500.000	500.000
33) L7 AR-1260-3	7.667	6.664	10145816	4275795	500.000	500.000
34) L7 AR-1260-4	8.281	7.200	13484809	6310977	500.000	500.000
35) L7 AR-1260-5	8.596	7.545	8729843	4397294	500.000	500.000

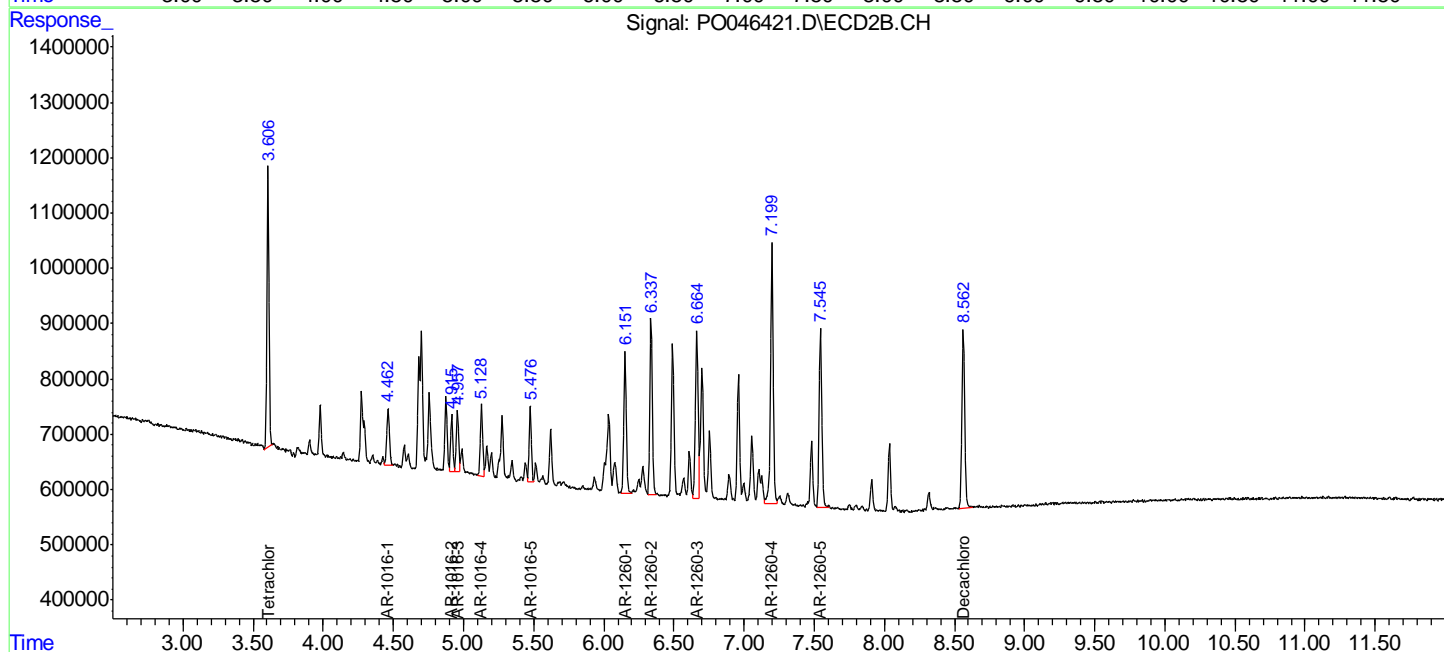
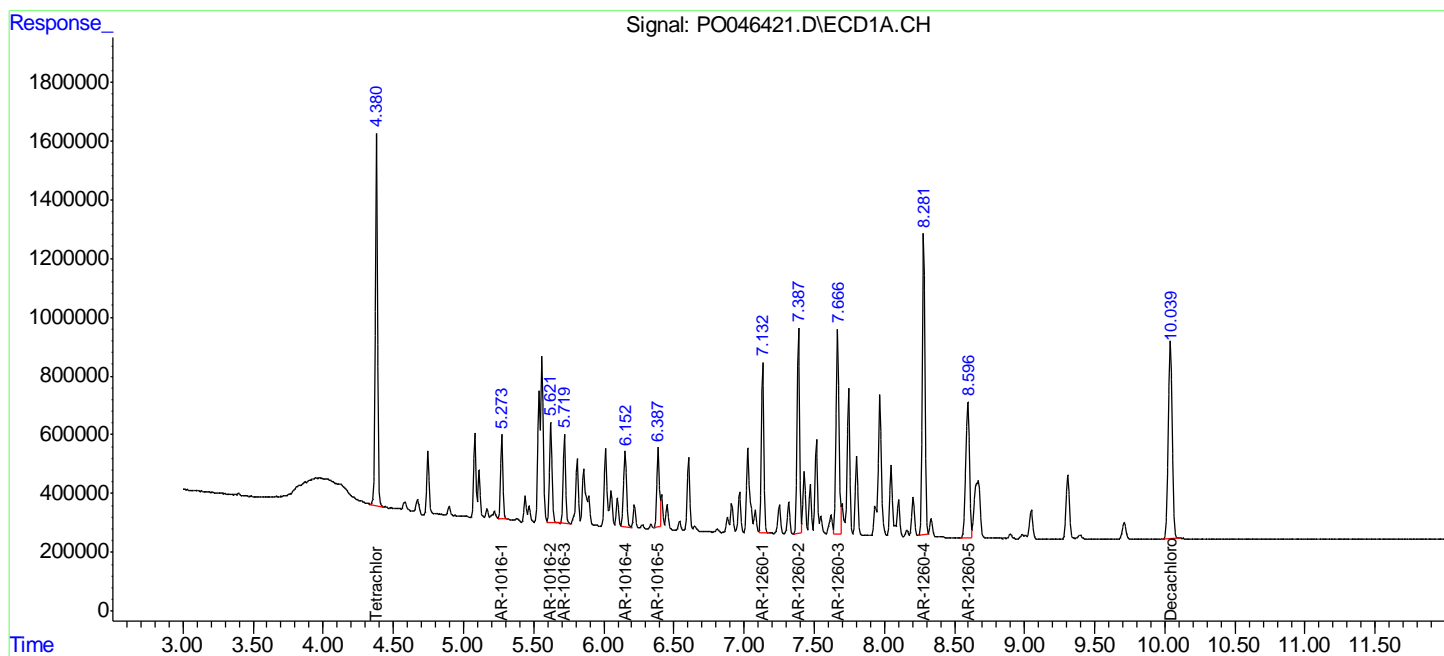
(f)=RT Delta > 1/2 Window (#)=Amounts differ by > 25% (m)=manual int.

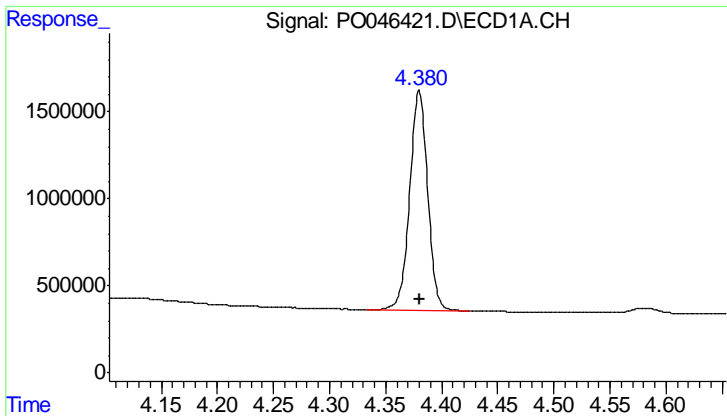
Data Path : Z:\pestpcbsrv\HPCHEM1\ECD O\Data\PO070218\  
 Data File : PO046421.D  
 Signal(s) : Signal #1: ECD1A.CH Signal #2: ECD2B.CH  
 Acq On : 02 Jul 2018 10:06  
 Operator : SM/UA  
 Sample : AR1660ICC500  
 Misc :  
 ALS Vial : 5 Sample Multiplier: 1

Instrument :  
 ECD\_O  
 ClientSampled :  
 AR1660ICC500

Integration File signal 1: autoint1.e  
 Integration File signal 2: autoint2.e  
 Quant Time: Jul 02 10:32:45 2018  
 Quant Method : Z:\pestpcbsrv\HPCHEM1\ECD\_O\methods\PO070118.M  
 Quant Title : GC EXTRACTABLES  
 QLast Update : Mon Jul 02 10:24:37 2018  
 Response via : Initial Calibration  
 Integrator: ChemStation 6890 Scale Mode: Small noise peaks clipped

Volume Inj. : 2 ul  
 Signal #1 Phase : ZB-MR1 Signal #2 Phase: ZB-MR2  
 Signal #1 Info : 30Mx0.32mmx 0.50µ Signal #2 Info : 30M x 0.32mm x 0.25µm

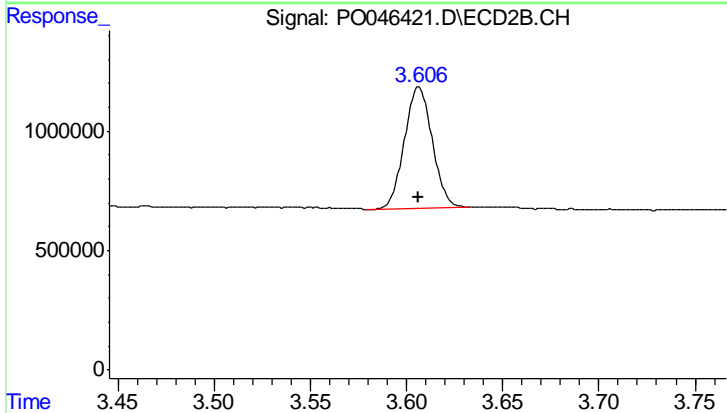




#1 Tetrachloro-m-xylene

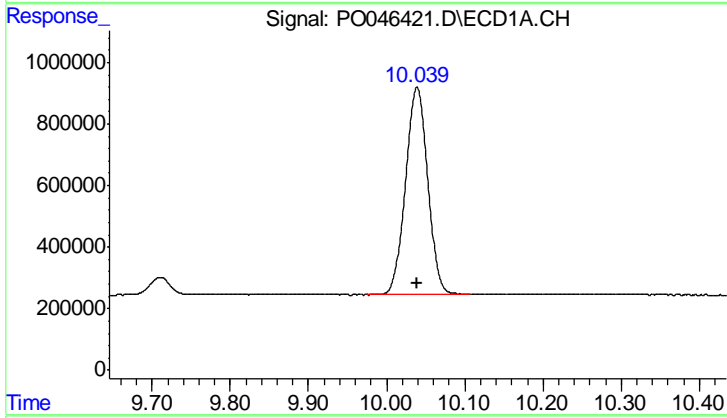
R.T.: 4.380 min  
 Delta R.T.: 0.000 min  
 Response: 14133138  
 Conc: 50.00 ng/ml

Instrument :  
 ECD\_O  
 ClientSampleId :  
 AR1660ICC500



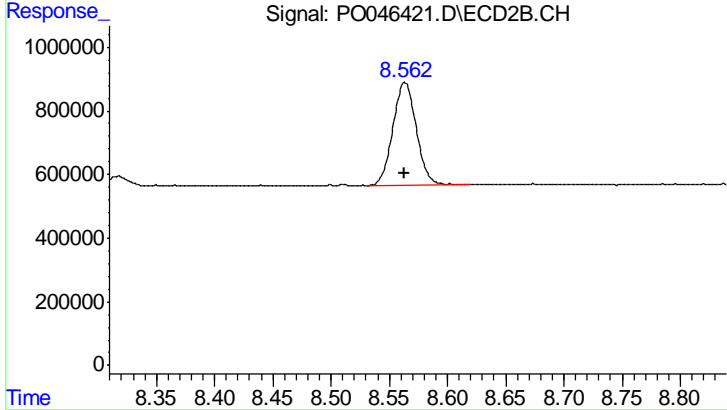
#1 Tetrachloro-m-xylene

R.T.: 3.606 min  
 Delta R.T.: 0.000 min  
 Response: 5145639  
 Conc: 50.00 ng/ml



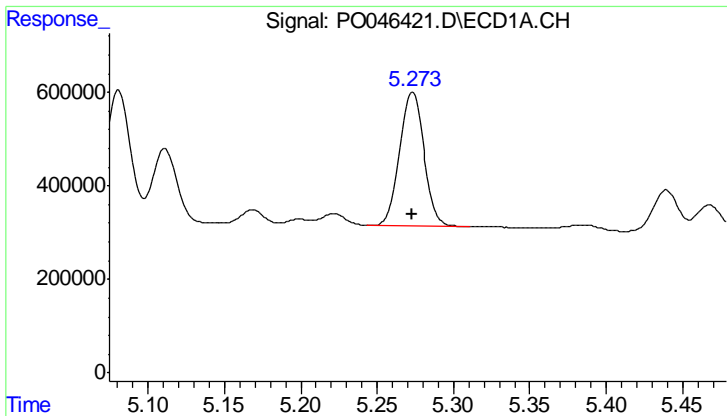
#2 Decachlorobiphenyl

R.T.: 10.039 min  
 Delta R.T.: 0.000 min  
 Response: 13321969  
 Conc: 50.00 ng/ml



#2 Decachlorobiphenyl

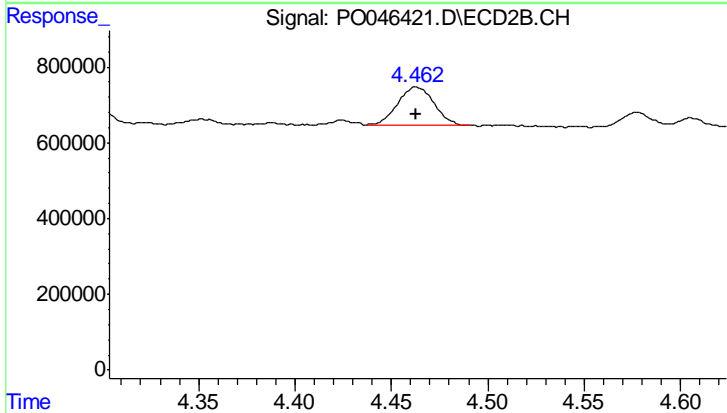
R.T.: 8.563 min  
 Delta R.T.: 0.000 min  
 Response: 4565107  
 Conc: 50.00 ng/ml



#3 AR-1016-1

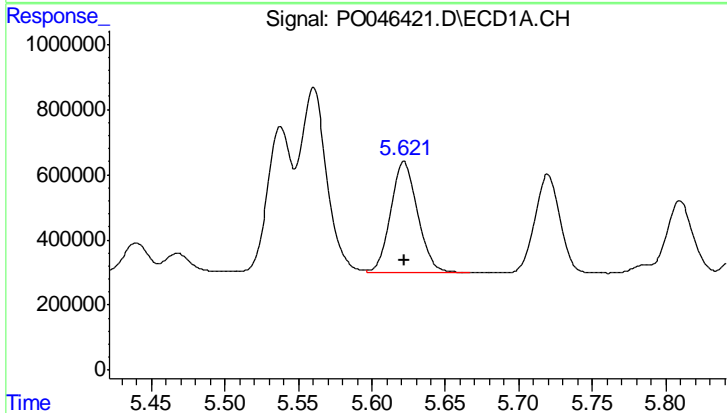
R.T.: 5.273 min  
 Delta R.T.: 0.000 min  
 Response: 3230079  
 Conc: 500.00 ng/ml

Instrument :  
 ECD\_O  
 ClientSampleId :  
 AR1660ICC500



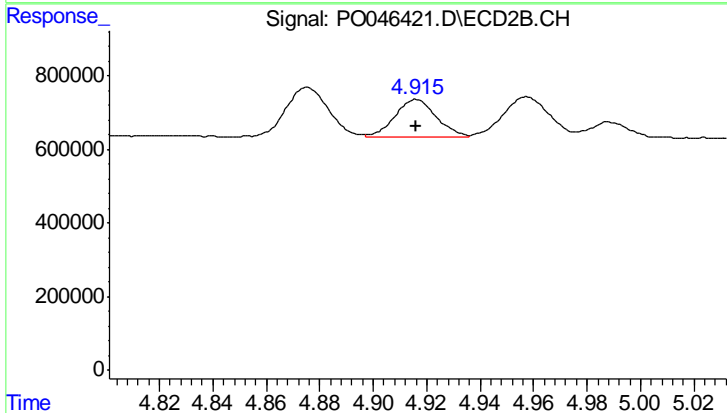
#3 AR-1016-1

R.T.: 4.463 min  
 Delta R.T.: 0.000 min  
 Response: 1354310  
 Conc: 500.00 ng/ml



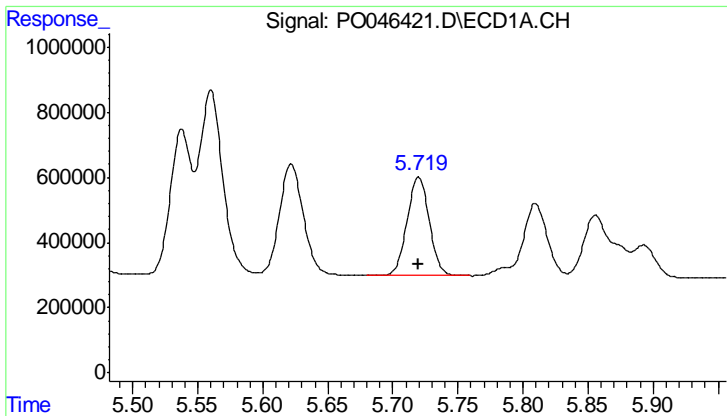
#4 AR-1016-2

R.T.: 5.622 min  
 Delta R.T.: 0.000 min  
 Response: 4306008  
 Conc: 500.00 ng/ml



#4 AR-1016-2

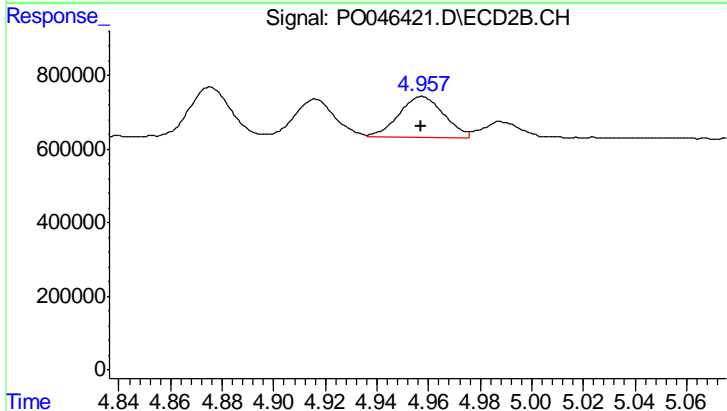
R.T.: 4.916 min  
 Delta R.T.: 0.000 min  
 Response: 1120485  
 Conc: 500.00 ng/ml



#5 AR-1016-3

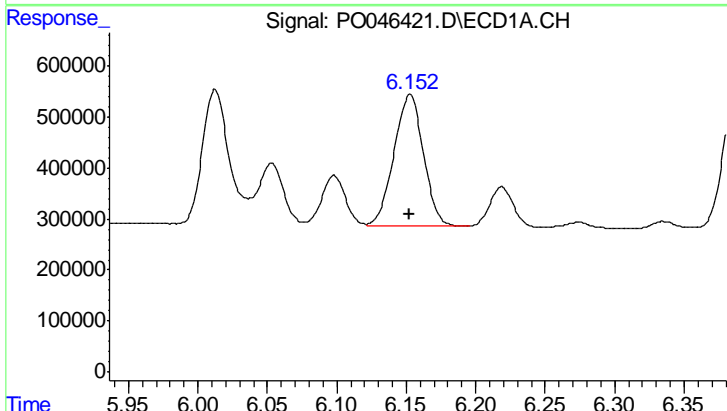
R.T.: 5.720 min  
 Delta R.T.: 0.000 min  
 Response: 3564894  
 Conc: 500.00 ng/ml

Instrument :  
 ECD\_O  
 ClientSampleId :  
 AR1660ICC500



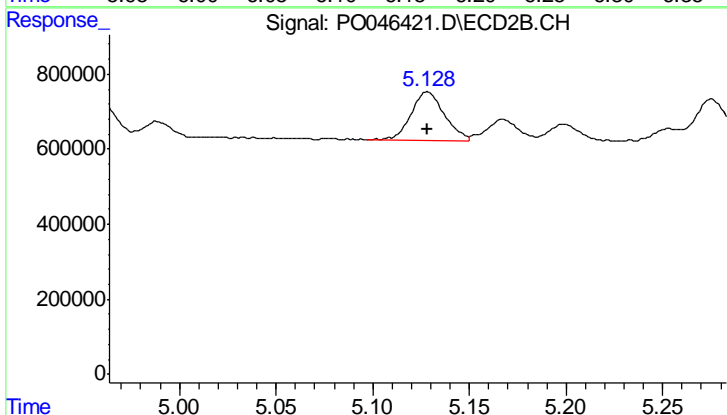
#5 AR-1016-3

R.T.: 4.957 min  
 Delta R.T.: 0.000 min  
 Response: 1346436  
 Conc: 500.00 ng/ml



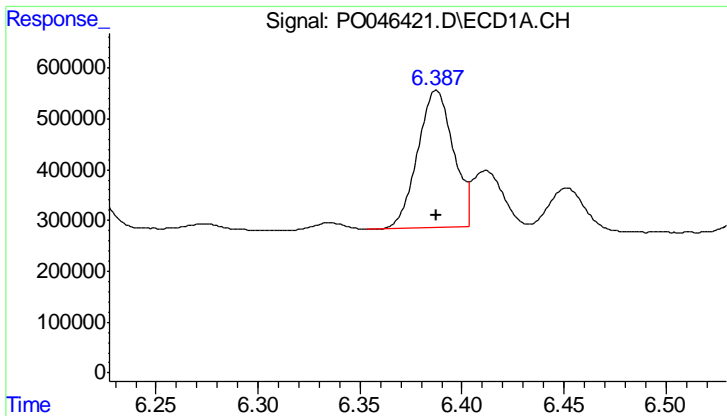
#6 AR-1016-4

R.T.: 6.153 min  
 Delta R.T.: 0.000 min  
 Response: 3788676  
 Conc: 500.00 ng/ml



#6 AR-1016-4

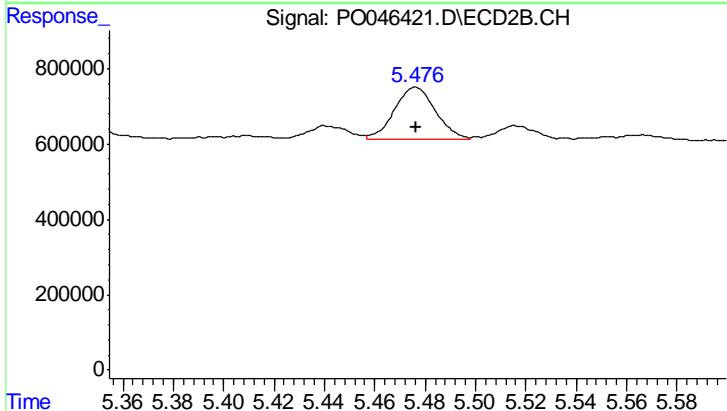
R.T.: 5.128 min  
 Delta R.T.: 0.000 min  
 Response: 1557818  
 Conc: 500.00 ng/ml



#7 AR-1016-5

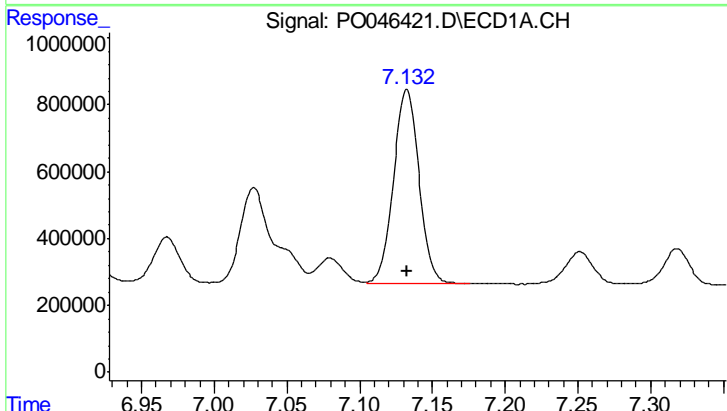
R.T.: 6.387 min  
 Delta R.T.: 0.000 min  
 Response: 3271991  
 Conc: 500.00 ng/ml

Instrument :  
 ECD\_O  
 ClientSampleId :  
 AR1660ICC500



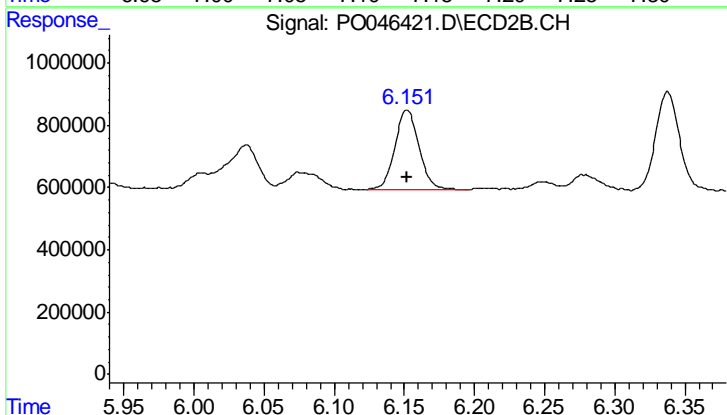
#7 AR-1016-5

R.T.: 5.476 min  
 Delta R.T.: 0.000 min  
 Response: 1530917  
 Conc: 500.00 ng/ml



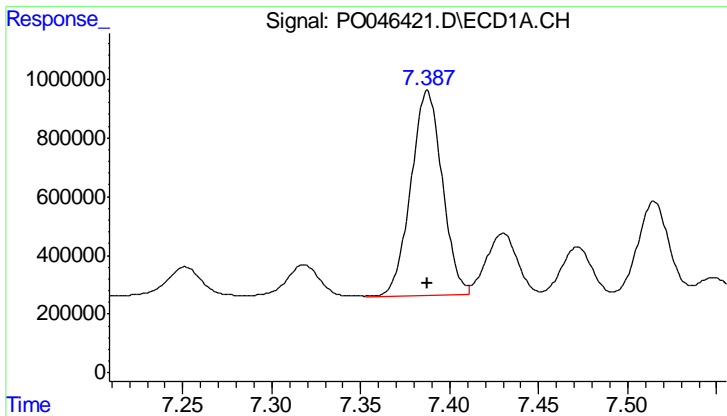
#31 AR-1260-1

R.T.: 7.132 min  
 Delta R.T.: 0.000 min  
 Response: 7056539  
 Conc: 500.00 ng/ml



#31 AR-1260-1

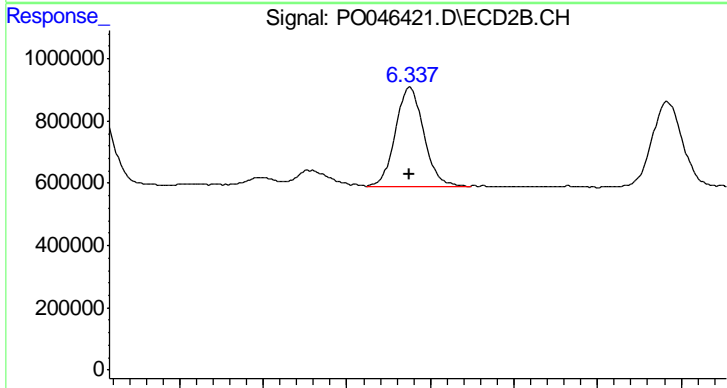
R.T.: 6.152 min  
 Delta R.T.: 0.000 min  
 Response: 3070946  
 Conc: 500.00 ng/ml



#32 AR-1260-2

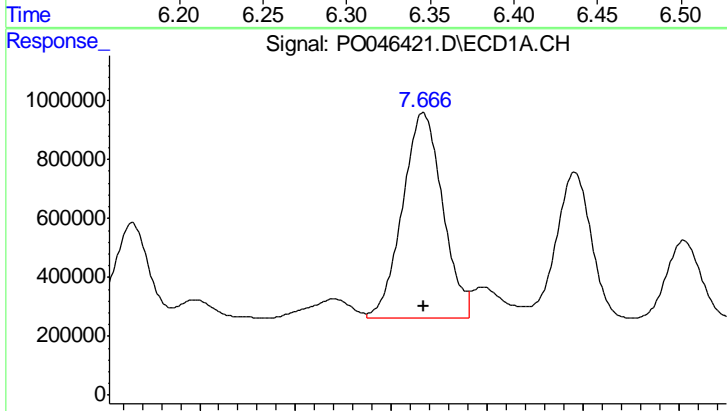
R.T.: 7.387 min  
 Delta R.T.: 0.000 min  
 Response: 8532105  
 Conc: 500.00 ng/ml

Instrument :  
 ECD\_O  
 ClientSampleId :  
 AR1660ICC500



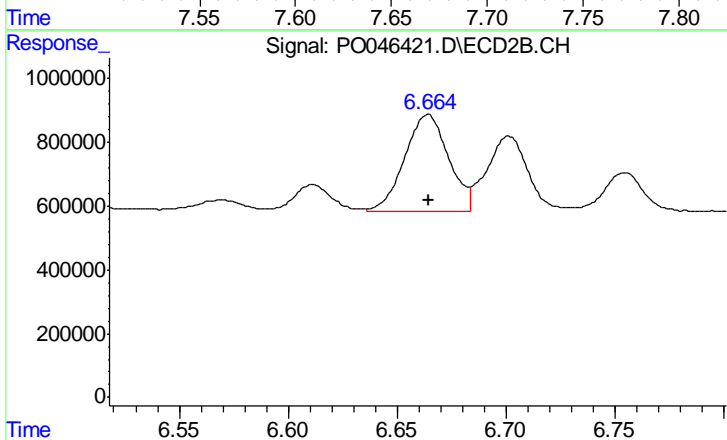
#32 AR-1260-2

R.T.: 6.338 min  
 Delta R.T.: 0.000 min  
 Response: 3731032  
 Conc: 500.00 ng/ml



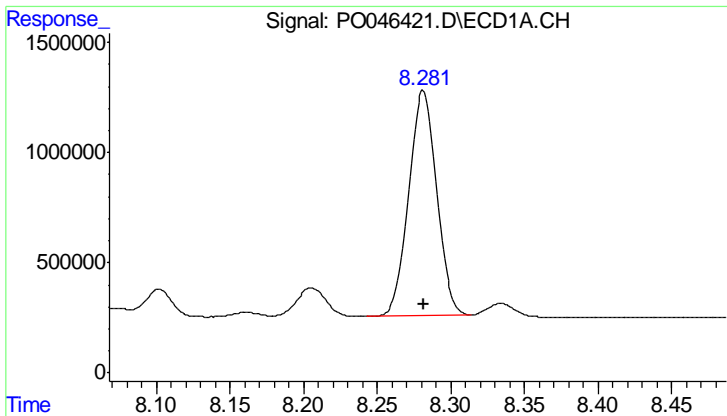
#33 AR-1260-3

R.T.: 7.667 min  
 Delta R.T.: 0.000 min  
 Response: 10145816  
 Conc: 500.00 ng/ml



#33 AR-1260-3

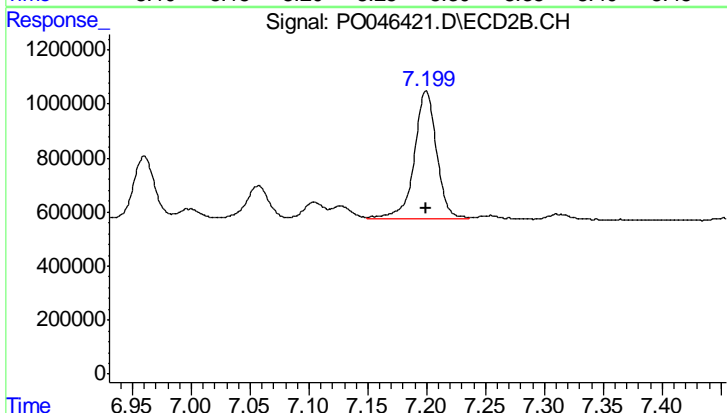
R.T.: 6.664 min  
 Delta R.T.: 0.000 min  
 Response: 4275795  
 Conc: 500.00 ng/ml



#34 AR-1260-4

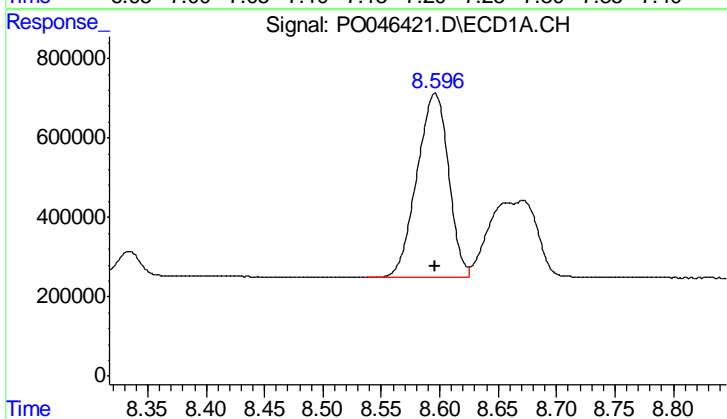
R.T.: 8.281 min  
Delta R.T.: 0.000 min  
Response: 13484809  
Conc: 500.00 ng/ml

Instrument :  
ECD\_O  
ClientSampleId :  
AR1660ICC500



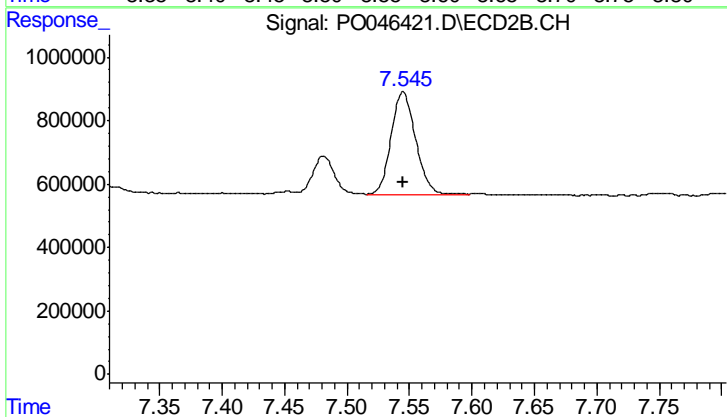
#34 AR-1260-4

R.T.: 7.200 min  
Delta R.T.: 0.000 min  
Response: 6310977  
Conc: 500.00 ng/ml



#35 AR-1260-5

R.T.: 8.596 min  
Delta R.T.: 0.000 min  
Response: 8729843  
Conc: 500.00 ng/ml



#35 AR-1260-5

R.T.: 7.545 min  
Delta R.T.: 0.000 min  
Response: 4397294  
Conc: 500.00 ng/ml