

Data Path : Z:\pestpcbsrv\HPCHEM1\ECD_0\Data\P0070219\
 Data File : P0057683.D
 Signal(s) : Signal #1: ECD1A.CH Signal #2: ECD2B.CH
 Acq On : 02 Jul 2019 17:45
 Operator : SM/SJ
 Sample : PB121981BS
 Misc :
 ALS Vial : 6 Sample Multiplier: 1

Instrument :
 ECD_0
ClientSampleId :
 PB121981BS

Manual Integrations
APPROVED
 Ankita
 7/3/2019 9:40:12 AM

Integration File signal 1: autoint1.e
 Integration File signal 2: autoint2.e
 Quant Time: Jul 03 04:24:51 2019
 Quant Method : Z:\pestpcbsrv\HPCHEM1\ECD_0\methods\P0062419.M
 Quant Title : GC EXTRACTABLES
 QLast Update : Mon Jun 24 14:02:43 2019
 Response via : Initial Calibration
 Integrator: ChemStation 6890 Scale Mode: Small noise peaks clipped

Volume Inj. : 2 µl
 Signal #1 Phase : ZB-MR1 Signal #2 Phase: ZB-MR2
 Signal #1 Info : 30Mx0.32mmx 0.50µ Signal #2 Info : 30M x 0.32mm x 0.25µm

| Compound | RT#1 | RT#2 | Resp#1 | Resp#2 | ng/ml | ng/ml |
|-----------------------------|-------|-------|---------|---------|----------|----------|
| ----- | | | | | | |
| System Monitoring Compounds | | | | | | |
| 1) SA Tetrachlo... | 4.214 | 3.547 | 829985 | 774314 | 21.129 | 22.021 |
| 2) SA Decachlor... | 9.753 | 8.462 | 1364934 | 880073 | 24.273 | 23.527 |
| Target Compounds | | | | | | |
| 3) L1 AR-1016-1 | 5.373 | 4.611 | 393215 | 304673 | 222.475m | 227.881m |
| 4) L1 AR-1016-2 | 5.395 | 4.629 | 548160 | 425478 | 212.714m | 218.543m |
| 5) L1 AR-1016-3 | 5.456 | 4.802 | 337883 | 233548 | 216.751 | 220.591m |
| 6) L1 AR-1016-4 | 5.554 | 4.843 | 294076 | 197544 | 226.772m | 222.033m |
| 7) L1 AR-1016-5 | 5.844 | 5.054 | 305676 | 238678 | 223.637m | 208.926 |
| 31) L7 AR-1260-1 | 6.957 | 6.071 | 650338 | 494974 | 234.663 | 231.264 |
| 32) L7 AR-1260-2 | 7.214 | 6.259 | 856238 | 636842 | 232.257 | 232.117 |
| 33) L7 AR-1260-3 | 7.568 | 6.410 | 730159 | 572487 | 240.331 | 234.481 |
| 34) L7 AR-1260-4 | 7.793 | 6.876 | 713675 | 507073 | 235.324 | 243.546 |
| 35) L7 AR-1260-5 | 8.101 | 7.118 | 1505195 | 1174801 | 240.694 | 231.619 |
| ----- | | | | | | |

(f)=RT Delta > 1/2 Window (#)=Amounts differ by > 25% (m)=manual int.

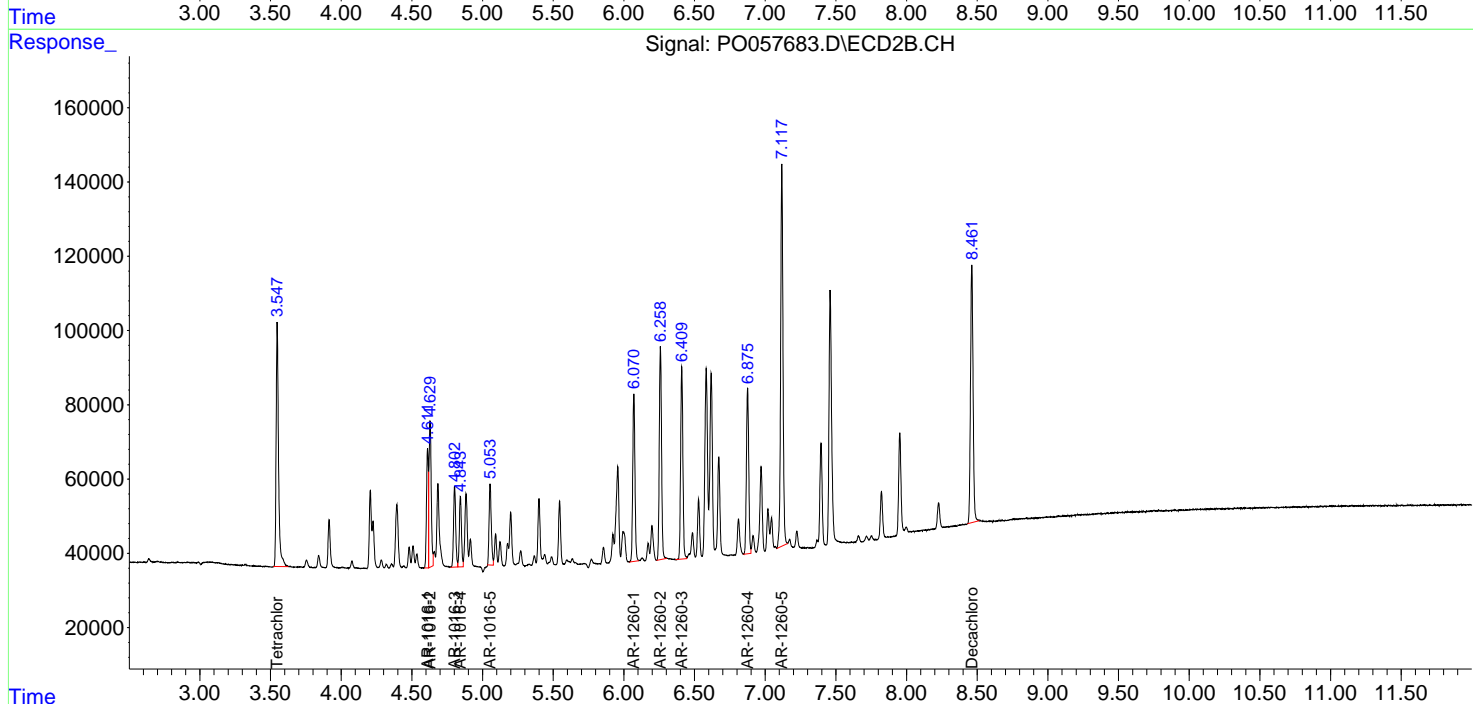
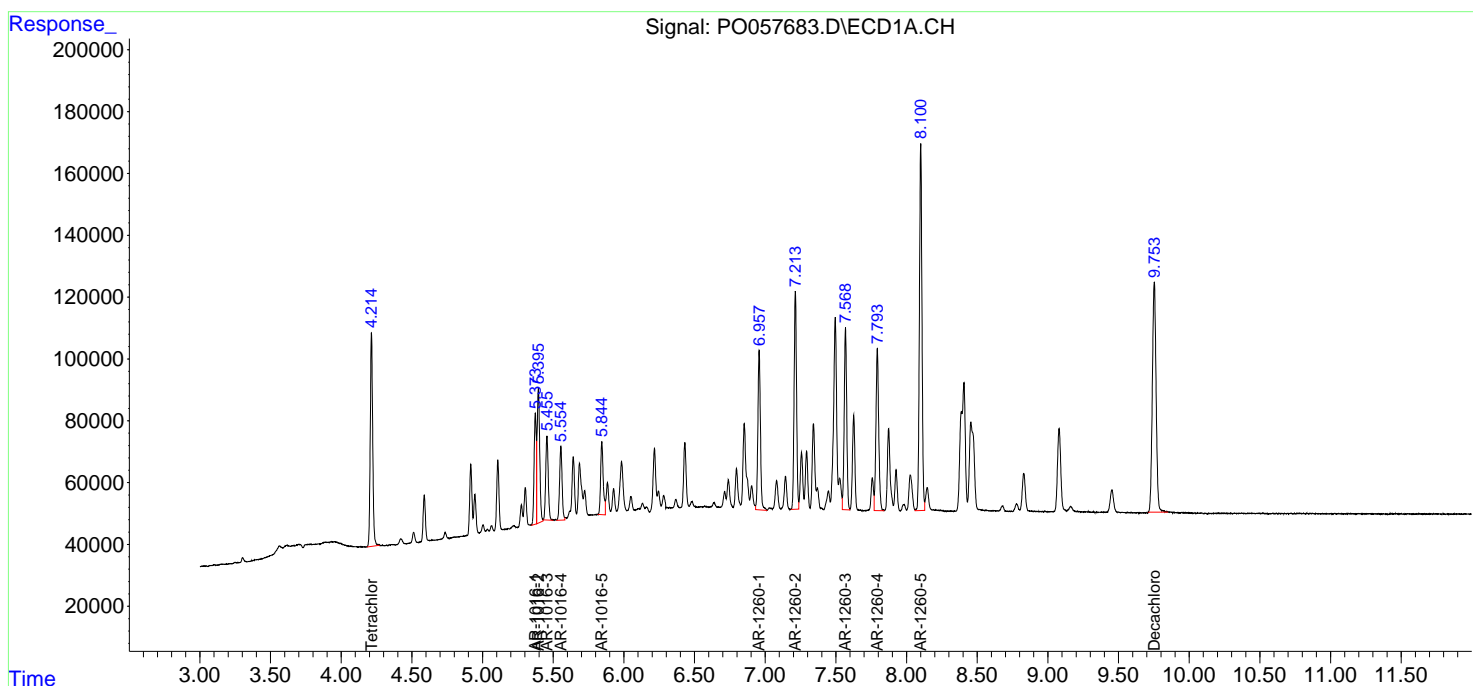
Data Path : Z:\pestpcbsrv\HPCHEM1\ECD_0\Data\P0070219\
 Data File : P0057683.D
 Signal(s) : Signal #1: ECD1A.CH Signal #2: ECD2B.CH
 Acq On : 02 Jul 2019 17:45
 Operator : SM/SJ
 Sample : PB121981BS
 Misc :
 ALS Vial : 6 Sample Multiplier: 1

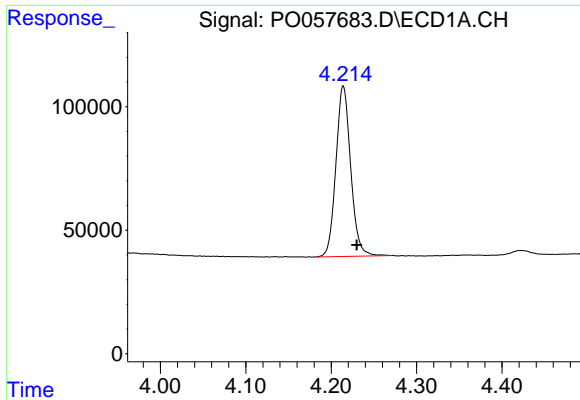
Instrument :
 ECD_O
Client Sampled :
 PB121981BS

Manual Integrations
APPROVED
 Ankita
 7/3/2019 9:40:12 AM

Integration File signal 1: autoint1.e
 Integration File signal 2: autoint2.e
 Quant Time: Jul 03 04:24:51 2019
 Quant Method : Z:\pestpcbsrv\HPCHEM1\ECD_0\methods\P0062419.M
 Quant Title : GC EXTRACTABLES
 QLast Update : Mon Jun 24 14:02:43 2019
 Response via : Initial Calibration
 Integrator: ChemStation 6890 Scale Mode: Small noise peaks clipped

Volume Inj. : 2 µl
 Signal #1 Phase : ZB-MR1 Signal #2 Phase: ZB-MR2
 Signal #1 Info : 30Mx0.32mmx 0.50µ Signal #2 Info : 30M x 0.32mm x 0.25µm

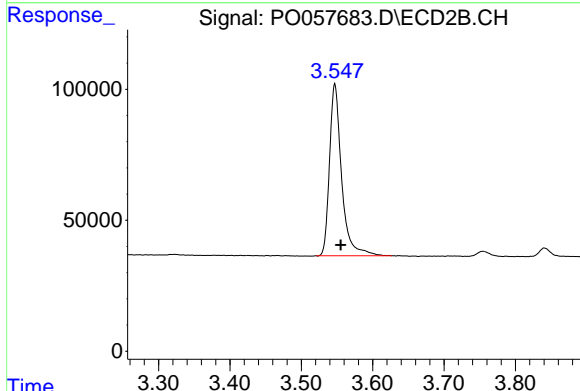




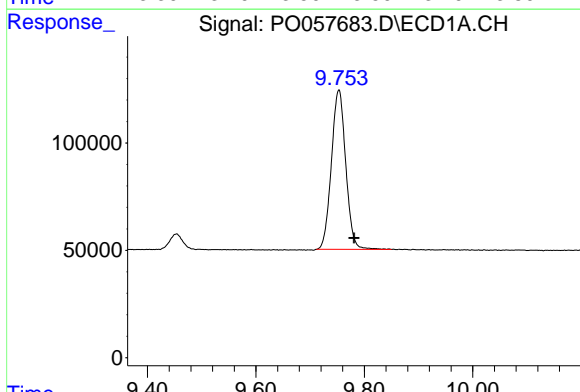
#1 Tetrachloro-m-xylene
 R.T.: 4.214 min
 Delta R.T.: -0.016 min
 Response: 829985
 Conc: 21.13 ng/ml

Instrument :
 ECD_O
ClientSampled :
 PB121981BS

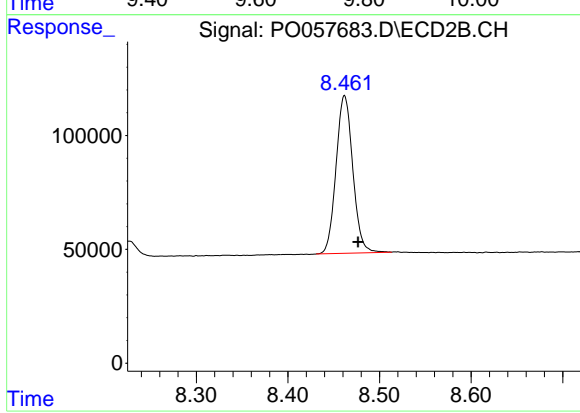
Manual Integrations
APPROVED
 Ankita
 7/3/2019 9:40:12 AM



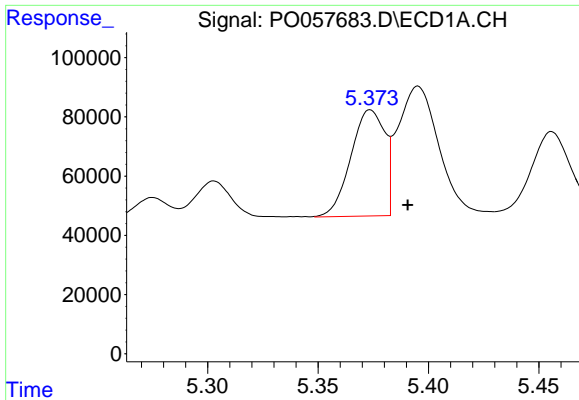
#1 Tetrachloro-m-xylene
 R.T.: 3.547 min
 Delta R.T.: -0.008 min
 Response: 774314
 Conc: 22.02 ng/ml



#2 Decachlorobiphenyl
 R.T.: 9.753 min
 Delta R.T.: -0.028 min
 Response: 1364934
 Conc: 24.27 ng/ml



#2 Decachlorobiphenyl
 R.T.: 8.462 min
 Delta R.T.: -0.015 min
 Response: 880073
 Conc: 23.53 ng/ml

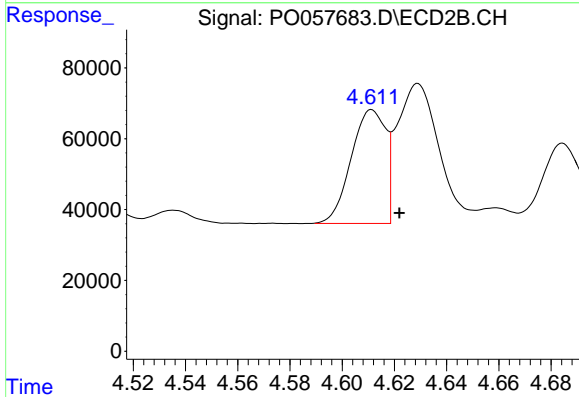


#3 AR-1016-1

R.T.: 5.373 min
 Delta R.T.: -0.018 min
 Response: 393215
 Conc: 222.47 ng/ml m

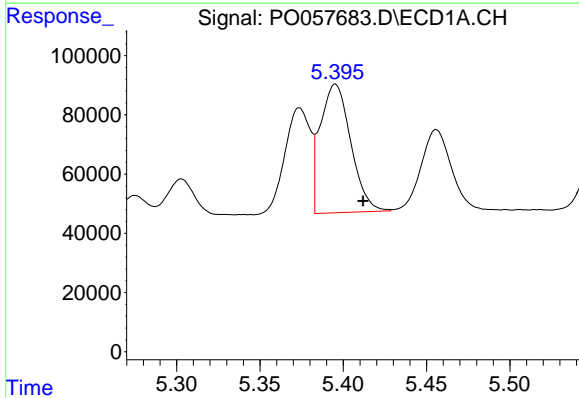
Instrument :
 ECD_O
ClientSampled :
 PB121981BS

Manual Integrations
APPROVED
 Ankita
 7/3/2019 9:40:12 AM



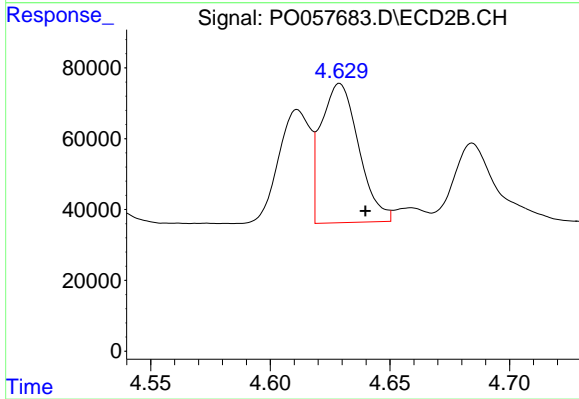
#3 AR-1016-1

R.T.: 4.611 min
 Delta R.T.: -0.011 min
 Response: 304673
 Conc: 227.88 ng/ml m



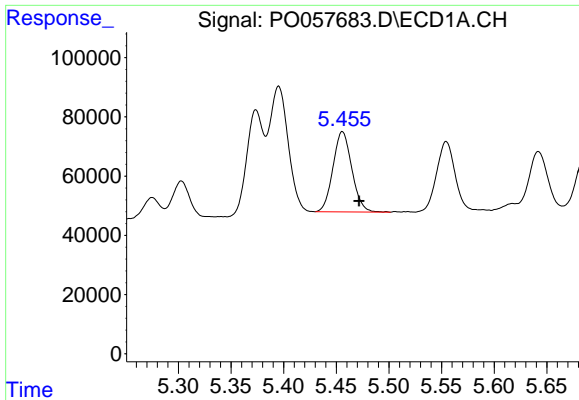
#4 AR-1016-2

R.T.: 5.395 min
 Delta R.T.: -0.017 min
 Response: 548160
 Conc: 212.71 ng/ml m



#4 AR-1016-2

R.T.: 4.629 min
 Delta R.T.: -0.011 min
 Response: 425478
 Conc: 218.54 ng/ml m

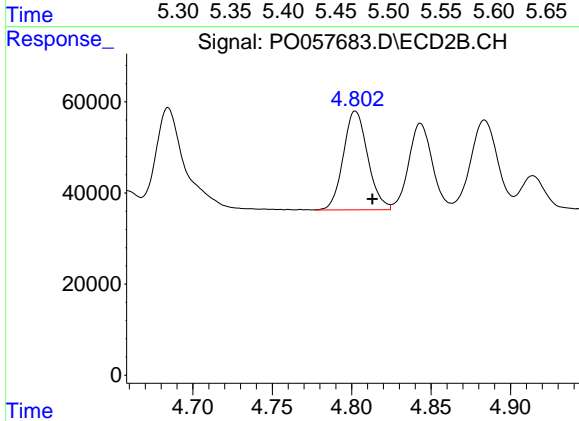


#5 AR-1016-3

R.T.: 5.456 min
 Delta R.T.: -0.016 min
 Response: 337883
 Conc: 216.75 ng/ml

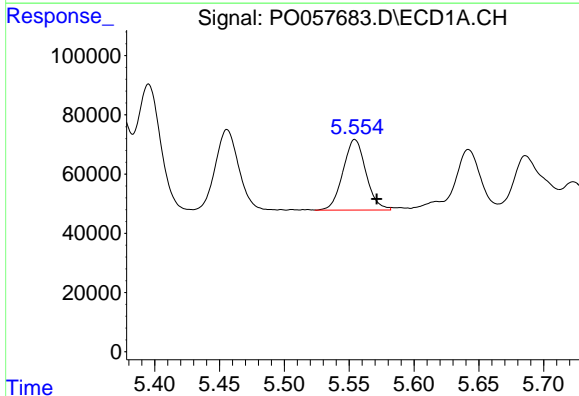
Instrument :
 ECD_O
ClientSampled :
 PB121981BS

Manual Integrations
APPROVED
 Ankita
 7/3/2019 9:40:12 AM



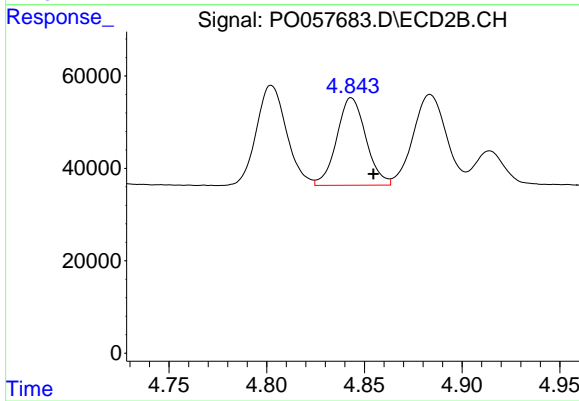
#5 AR-1016-3

R.T.: 4.802 min
 Delta R.T.: -0.011 min
 Response: 233548
 Conc: 220.59 ng/ml m



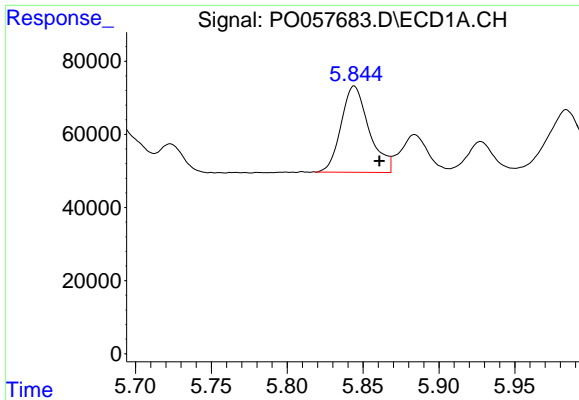
#6 AR-1016-4

R.T.: 5.554 min
 Delta R.T.: -0.017 min
 Response: 294076
 Conc: 226.77 ng/ml m



#6 AR-1016-4

R.T.: 4.843 min
 Delta R.T.: -0.012 min
 Response: 197544
 Conc: 222.03 ng/ml m

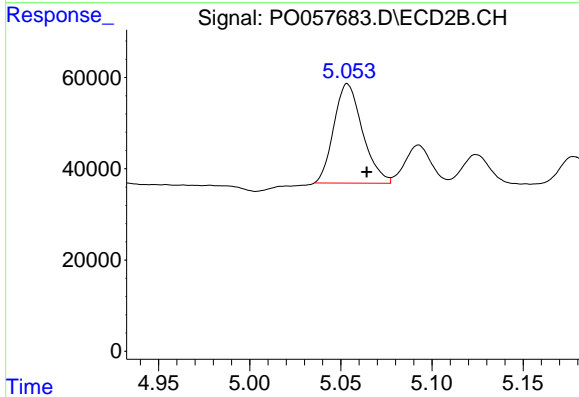


#7 AR-1016-5

R.T.: 5.844 min
 Delta R.T.: -0.017 min
 Response: 305676
 Conc: 223.64 ng/ml m

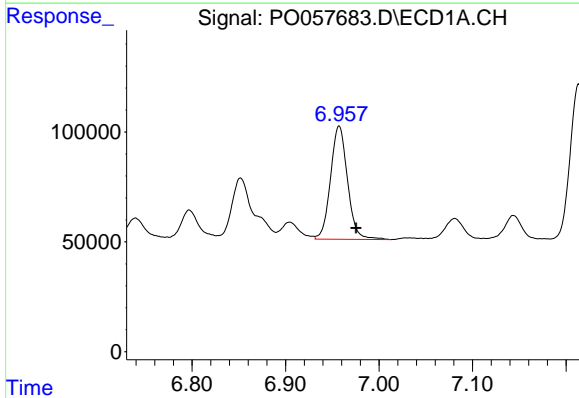
Instrument :
 ECD_O
 ClientSampled :
 PB121981BS

Manual Integrations
 APPROVED
 Ankita
 7/3/2019 9:40:12 AM



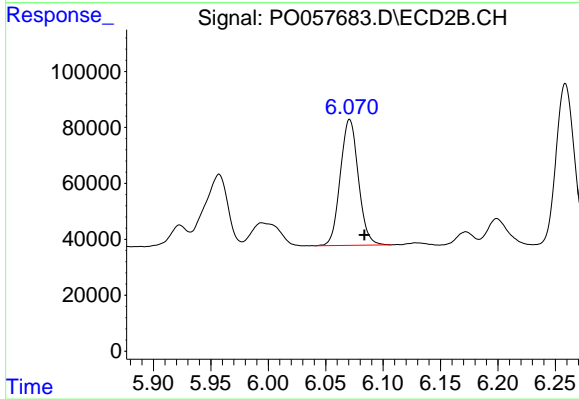
#7 AR-1016-5

R.T.: 5.054 min
 Delta R.T.: -0.011 min
 Response: 238678
 Conc: 208.93 ng/ml



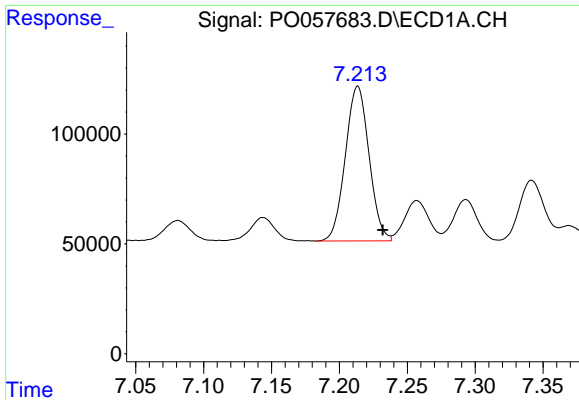
#31 AR-1260-1

R.T.: 6.957 min
 Delta R.T.: -0.018 min
 Response: 650338
 Conc: 234.66 ng/ml



#31 AR-1260-1

R.T.: 6.071 min
 Delta R.T.: -0.013 min
 Response: 494974
 Conc: 231.26 ng/ml

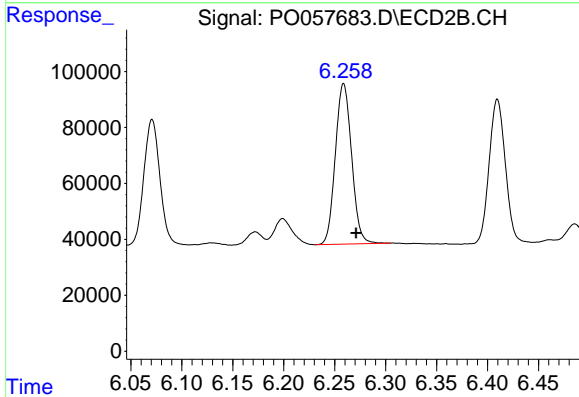


#32 AR-1260-2

R.T.: 7.214 min
 Delta R.T.: -0.018 min
 Response: 856238
 Conc: 232.26 ng/ml

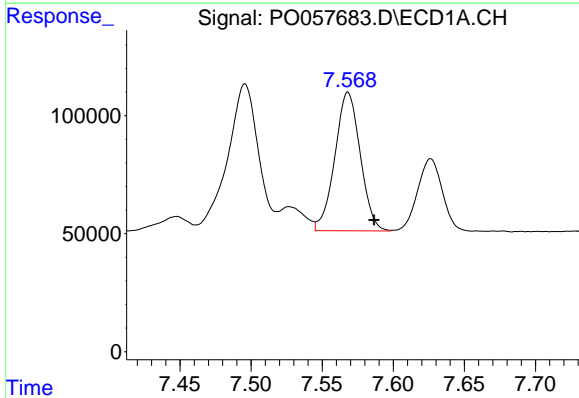
Instrument :
 ECD_O
 ClientSampled :
 PB121981BS

Manual Integrations
 APPROVED
 Ankita
 7/3/2019 9:40:12 AM



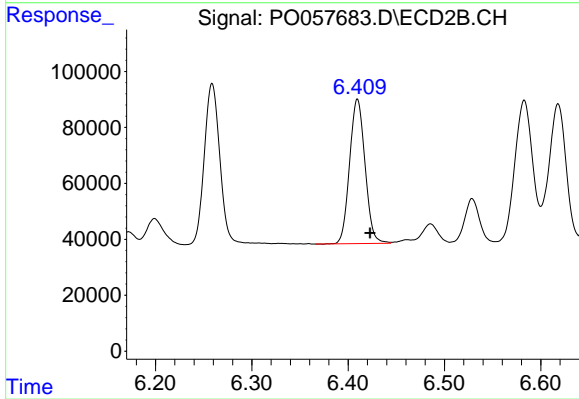
#32 AR-1260-2

R.T.: 6.259 min
 Delta R.T.: -0.012 min
 Response: 636842
 Conc: 232.12 ng/ml



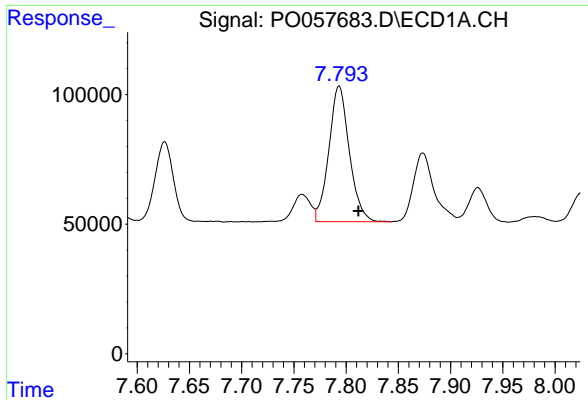
#33 AR-1260-3

R.T.: 7.568 min
 Delta R.T.: -0.018 min
 Response: 730159
 Conc: 240.33 ng/ml



#33 AR-1260-3

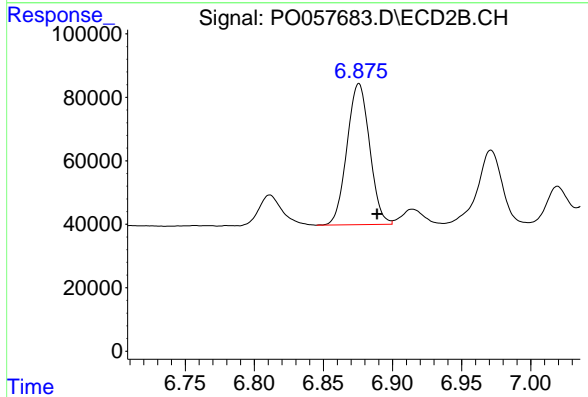
R.T.: 6.410 min
 Delta R.T.: -0.013 min
 Response: 572487
 Conc: 234.48 ng/ml



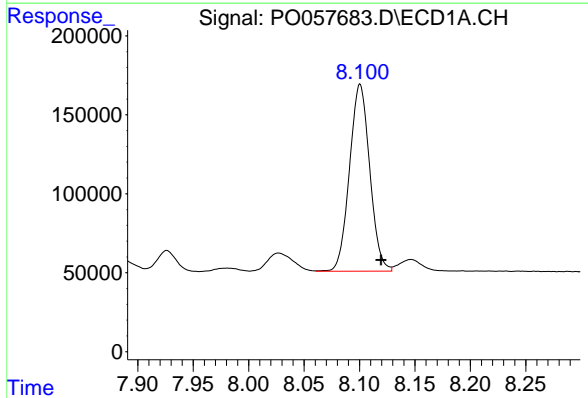
#34 AR-1260-4
 R.T.: 7.793 min
 Delta R.T.: -0.018 min
 Response: 713675
 Conc: 235.32 ng/ml

Instrument :
 ECD_O
ClientSampled :
 PB121981BS

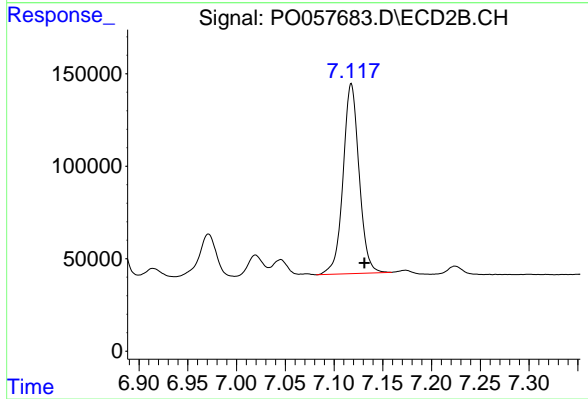
Manual Integrations
APPROVED
 Ankita
 7/3/2019 9:40:12 AM



#34 AR-1260-4
 R.T.: 6.876 min
 Delta R.T.: -0.013 min
 Response: 507073
 Conc: 243.55 ng/ml



#35 AR-1260-5
 R.T.: 8.101 min
 Delta R.T.: -0.019 min
 Response: 1505195
 Conc: 240.69 ng/ml



#35 AR-1260-5
 R.T.: 7.118 min
 Delta R.T.: -0.013 min
 Response: 1174801
 Conc: 231.62 ng/ml