

Data Path : Z:\pestpcbsrv\HPCHEM1\ECD_0\Data\P0070220\
 Data File : P0069363.D
 Signal(s) : Signal #1: ECD1A.CH Signal #2: ECD2B.CH
 Acq On : 02 Jul 2020 12:42
 Operator : DD\AJ
 Sample : PB129922BS
 Misc :
 ALS Vial : 6 Sample Multiplier: 1

Instrument :
 ECD_0
 ClientSampled :

Integration File signal 1: autoint1.e
 Integration File signal 2: autoint2.e
 Quant Time: Jul 02 13:42:15 2020
 Quant Method : Z:\pestpcbsrv\HPCHEM1\ECD_0\methods\P0061820.M
 Quant Title : GC EXTRACTABLES
 QLast Update : Mon Jun 29 12:05:30 2020
 Response via : Initial Calibration
 Integrator: ChemStation 6890 Scale Mode: Small noise peaks clipped

Volume Inj. : 2 µl
 Signal #1 Phase : ZB-MR1 Signal #2 Phase: ZB-MR2
 Signal #1 Info : 30Mx0.32mmx 0.50µ Signal #2 Info : 30M x 0.32mm x 0.25µm

Compound	RT#1	RT#2	Resp#1	Resp#2	ng/ml	ng/ml
System Monitoring Compounds						
1) SA Tetrachlo...	4.401	3.566	837639	864563	28.315	22.462
2) SA Decachlor...	10.066	8.777	1132468	1132641	23.843	20.807
Target Compounds						
3) L1 AR-1016-1	5.709	4.798	328176	329514	253.563	217.977
4) L1 AR-1016-2	5.731	4.817	456020	446639	248.469	210.646
5) L1 AR-1016-3	5.794	5.003	275638	242416	246.431	215.132
6) L1 AR-1016-4	5.901	5.059	234089	207726	249.644	211.355
7) L1 AR-1016-5	6.212	5.281	223579	254625	221.836	209.186
9) L2 AR-1221-2	0.000	3.915	0	39309	N.D.	114.620 #
10) L2 AR-1221-3	4.838	4.002	145877	155712	166.540	144.967
11) L3 AR-1232-1	4.838	4.002	145877	155712	200.002	176.810
12) L3 AR-1232-2	5.415	4.817	209550	446639	506.225	487.937
13) L3 AR-1232-3	5.731	5.003	456020	242416	554.623	494.395
14) L3 AR-1232-4	5.901	5.101	234089	231655	564.844	547.672
15) L3 AR-1232-5	6.000	5.281	176130	254625	620.924	520.582
16) L4 AR-1242-1	5.709	4.798	328176	329514	329.920	297.882
17) L4 AR-1242-2	5.731	4.817	456020	446639	328.796	291.965
18) L4 AR-1242-3	5.794	5.003	275638	242416	319.561	291.398
19) L4 AR-1242-4	5.901	5.101	234089	231655	325.880	291.620
20) L4 AR-1242-5	0.000	5.656	0	199730	N.D.	179.473 #
21) L5 AR-1248-1	5.709	4.798	328176	329514	420.958	380.978
22) L5 AR-1248-2	6.000	5.059	176130	207726	172.245	172.193
23) L5 AR-1248-3	6.212	5.101	223579	231655	180.724	204.743
24) L5 AR-1248-4	6.605	5.281	150098	254625	99.802	176.086 #
25) L5 AR-1248-5	0.000	5.656	0	199730	N.D.	138.058 #
26) L6 AR-1254-1	6.605	5.656	150098	199730	102.195	85.070
27) L6 AR-1254-2	6.833	5.818	184247	204893	76.668	96.379 #
28) L6 AR-1254-3	7.211	6.230	101243	109417	39.289	32.104
29) L6 AR-1254-4	7.502	6.469	70378	39241	32.912	17.289 #
30) L6 AR-1254-5	7.928	6.894	683383	774442	326.736	243.168 #
31) L7 AR-1260-1	7.375	6.367	450871	520243	236.252	222.331
32) L7 AR-1260-2	7.642	6.567	568809	637130	243.027	223.827
33) L7 AR-1260-3	8.001	6.715	373181	595935	210.058	221.572
34) L7 AR-1260-4	8.227	7.195	421611	454468	202.168	189.688
35) L7 AR-1260-5	8.542	7.446	864394	1050843	196.657	181.387
36) L8 AR-1262-1	8.001	6.894	373181	774442	147.155	442.011 #
37) L8 AR-1262-2	8.542	7.446	864394	1050843	179.987	173.775
38) L8 AR-1262-3	8.834	7.728	556708	236516	262.172	95.290 #
39) L8 AR-1262-4	8.877	7.789	319434	801753	130.122	172.968 #
40) L8 AR-1262-5	9.457	8.288	230302	259395	128.355	111.642
41) L9 AR-1268-1	8.834	7.728	556708	236516	83.049	33.413 #
42) L9 AR-1268-2	8.877	7.789	319434	801753	50.022	124.196 #

Data Path : Z:\pestpcbsrv\HPCHEM1\ECD_0\Data\P0070220\
 Data File : P0069363.D
 Signal(s) : Signal #1: ECD1A.CH Signal #2: ECD2B.CH
 Acq On : 02 Jul 2020 12:42
 Operator : DD\AJ
 Sample : PB129922BS
 Misc :
 ALS Vial : 6 Sample Multiplier: 1

Instrument :
 ECD_0
 ClientSampleId :

Integration File signal 1: autoint1.e
 Integration File signal 2: autoint2.e
 Quant Time: Jul 02 13:42:15 2020
 Quant Method : Z:\pestpcbsrv\HPCHEM1\ECD_0\methods\P0061820.M
 Quant Title : GC EXTRACTABLES
 QLast Update : Mon Jun 29 12:05:30 2020
 Response via : Initial Calibration
 Integrator: ChemStation 6890 Scale Mode: Small noise peaks clipped

Volume Inj. : 2 µl
 Signal #1 Phase : ZB-MR1 Signal #2 Phase: ZB-MR2
 Signal #1 Info : 30Mx0.32mmx 0.50µ Signal #2 Info : 30M x 0.32mm x 0.25µm

	Compound	RT#1	RT#2	Resp#1	Resp#2	ng/ml	ng/ml
44)	L9 AR-1268-4	9.457	8.288	230302	259395	93.833	101.325
45)	L9 AR-1268-5	9.797	8.558	80572	91260	4.381	5.286

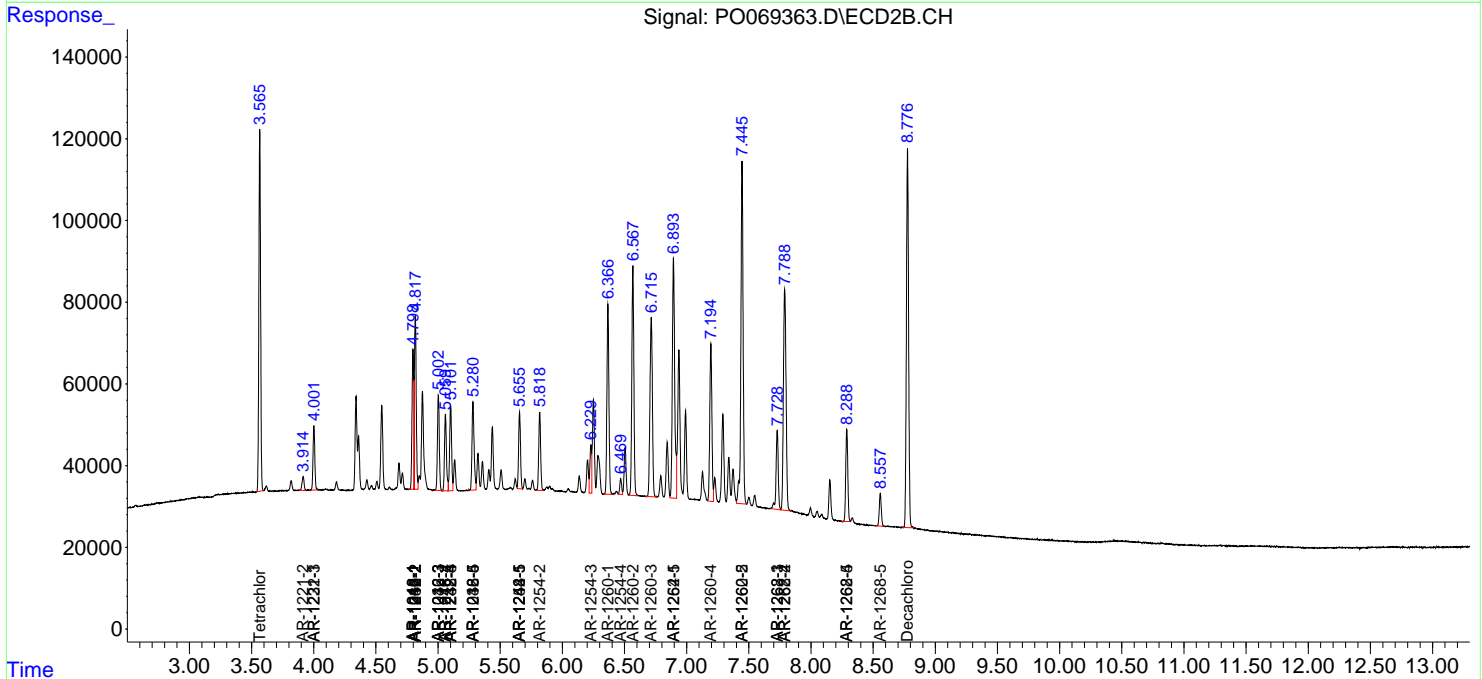
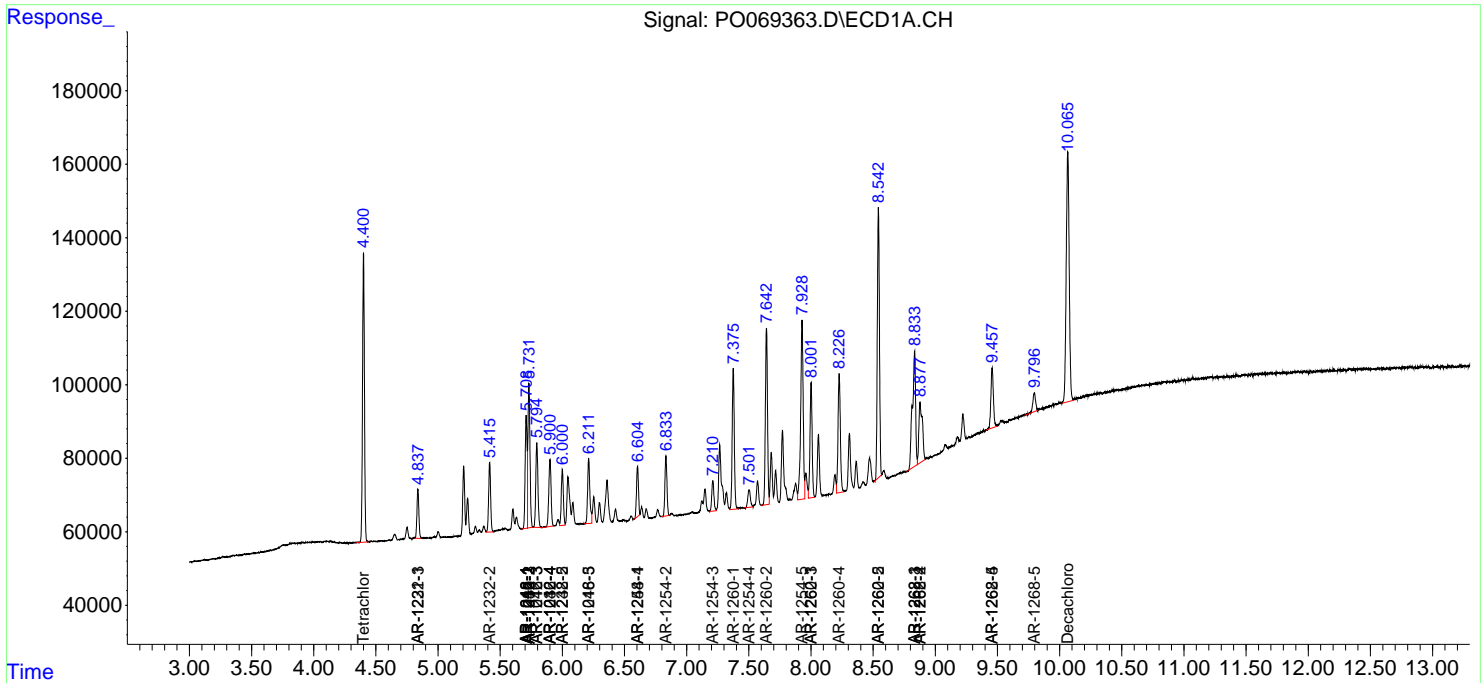
(f)=RT Delta > 1/2 Window (#)=Amounts differ by > 25% (m)=manual int.

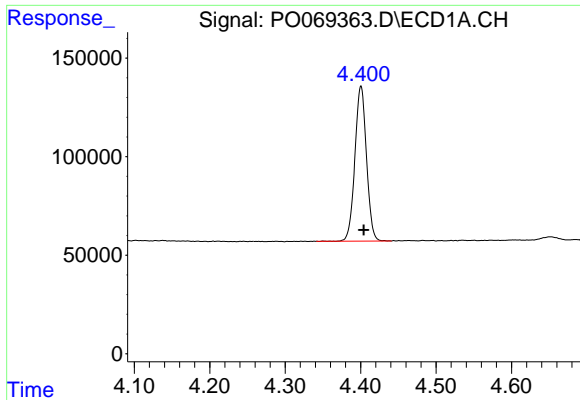
Data Path : Z:\pestpcbsrv\HPCHEM1\ECD_O\Data\P0070220\
 Data File : P0069363.D
 Signal(s) : Signal #1: ECD1A.CH Signal #2: ECD2B.CH
 Acq On : 02 Jul 2020 12:42
 Operator : DD\AJ
 Sample : PB129922BS
 Misc :
 ALS Vial : 6 Sample Multiplier: 1

Instrument :
 ECD_O
 ClientSampled :

Integration File signal 1: autoint1.e
 Integration File signal 2: autoint2.e
 Quant Time: Jul 02 13:42:15 2020
 Quant Method : Z:\pestpcbsrv\HPCHEM1\ECD_O\methods\P0061820.M
 Quant Title : GC EXTRACTABLES
 QLast Update : Mon Jun 29 12:05:30 2020
 Response via : Initial Calibration
 Integrator: ChemStation 6890 Scale Mode: Small noise peaks clipped

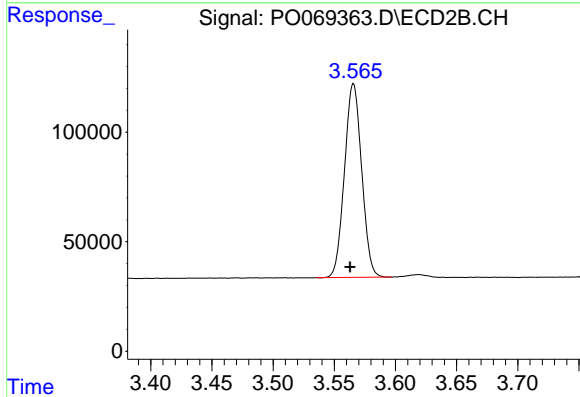
Volume Inj. : 2 µl
 Signal #1 Phase : ZB-MR1 Signal #2 Phase: ZB-MR2
 Signal #1 Info : 30Mx0.32mmx 0.50µ Signal #2 Info : 30M x 0.32mm x 0.25µm



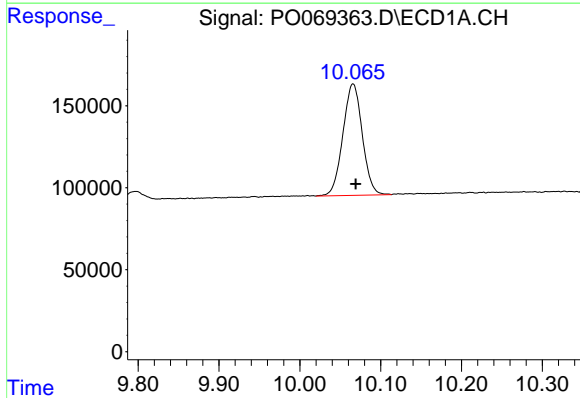


#1 Tetrachloro-m-xylene
 R.T.: 4.401 min
 Delta R.T.: -0.003 min
 Response: 837639
 Conc: 28.31 ng/ml

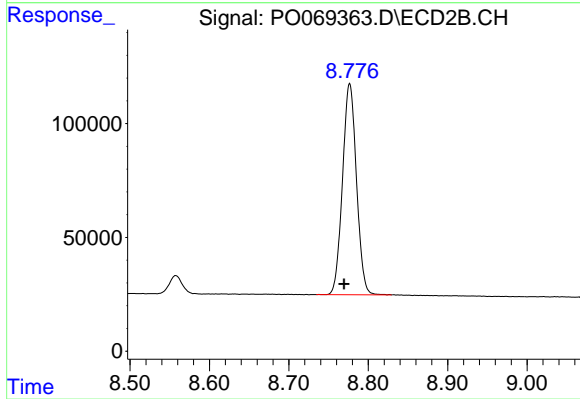
Instrument :
 ECD_O
 ClientSampled :



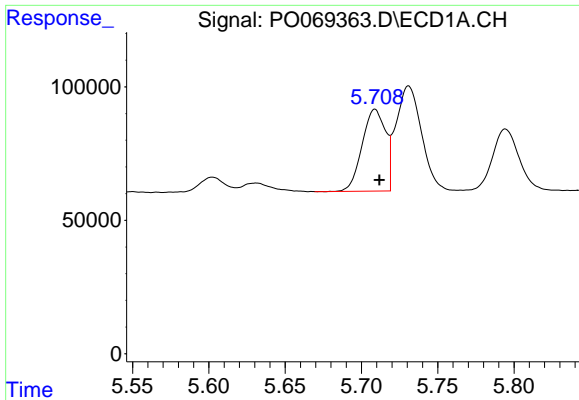
#1 Tetrachloro-m-xylene
 R.T.: 3.566 min
 Delta R.T.: 0.003 min
 Response: 864563
 Conc: 22.46 ng/ml



#2 Decachlorobiphenyl
 R.T.: 10.066 min
 Delta R.T.: -0.003 min
 Response: 1132468
 Conc: 23.84 ng/ml



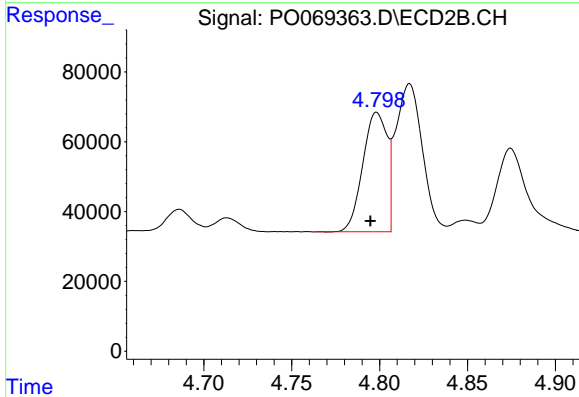
#2 Decachlorobiphenyl
 R.T.: 8.777 min
 Delta R.T.: 0.007 min
 Response: 1132641
 Conc: 20.81 ng/ml



#3 AR-1016-1

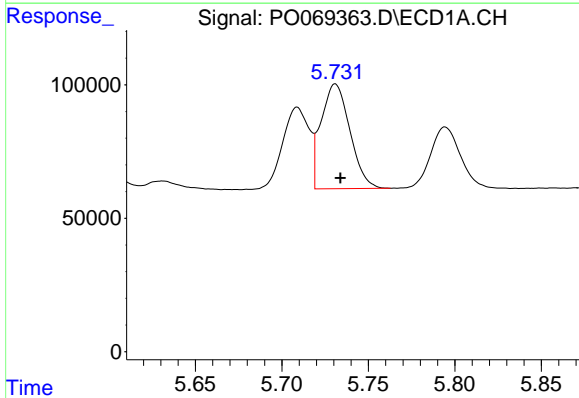
R.T.: 5.709 min
 Delta R.T.: -0.003 min
 Response: 328176
 Conc: 253.56 ng/ml

Instrument :
 ECD_O
 ClientSampleId :



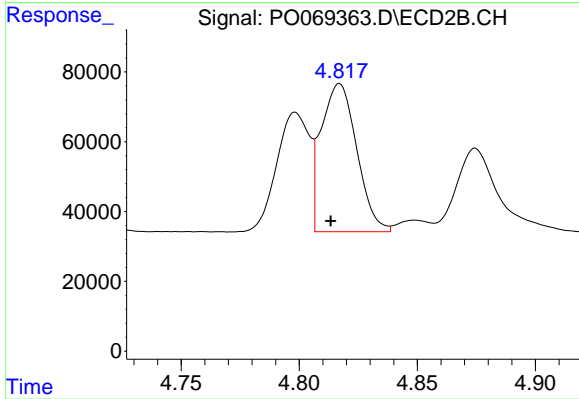
#3 AR-1016-1

R.T.: 4.798 min
 Delta R.T.: 0.004 min
 Response: 329514
 Conc: 217.98 ng/ml



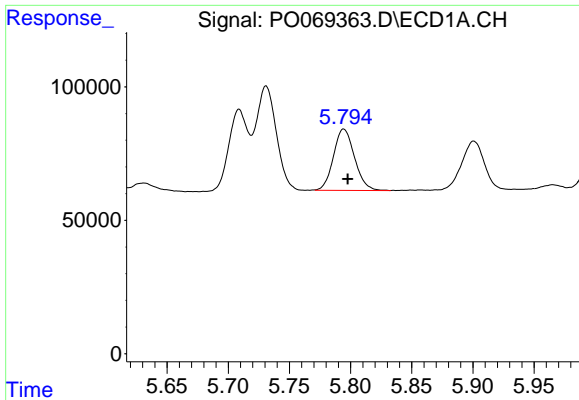
#4 AR-1016-2

R.T.: 5.731 min
 Delta R.T.: -0.003 min
 Response: 456020
 Conc: 248.47 ng/ml



#4 AR-1016-2

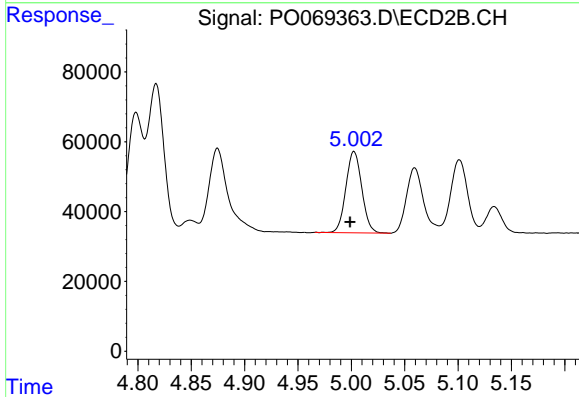
R.T.: 4.817 min
 Delta R.T.: 0.004 min
 Response: 446639
 Conc: 210.65 ng/ml



#5 AR-1016-3

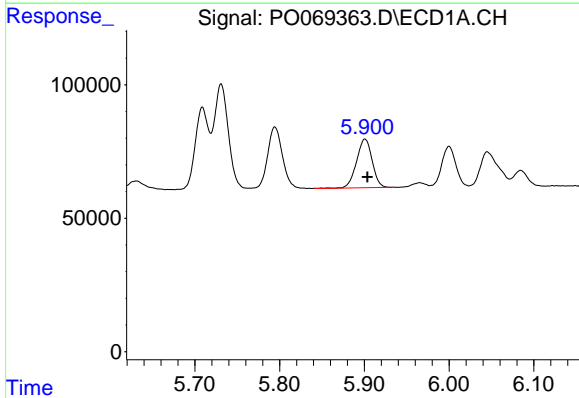
R.T.: 5.794 min
 Delta R.T.: -0.003 min
 Response: 275638
 Conc: 246.43 ng/ml

Instrument :
 ECD_O
 ClientSampled :



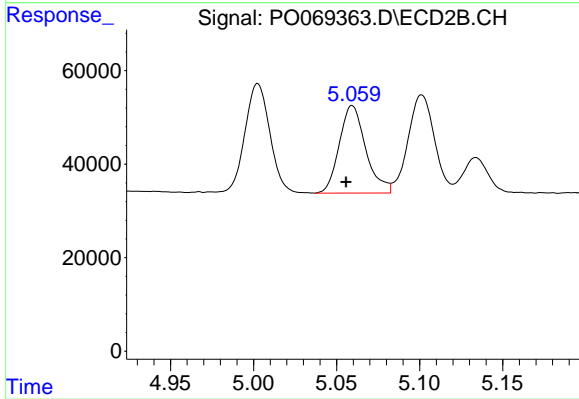
#5 AR-1016-3

R.T.: 5.003 min
 Delta R.T.: 0.004 min
 Response: 242416
 Conc: 215.13 ng/ml



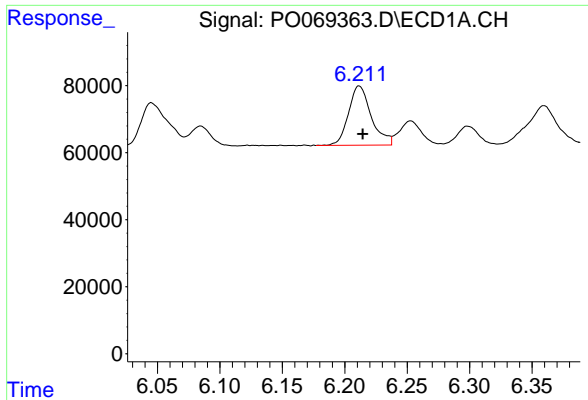
#6 AR-1016-4

R.T.: 5.901 min
 Delta R.T.: -0.003 min
 Response: 234089
 Conc: 249.64 ng/ml



#6 AR-1016-4

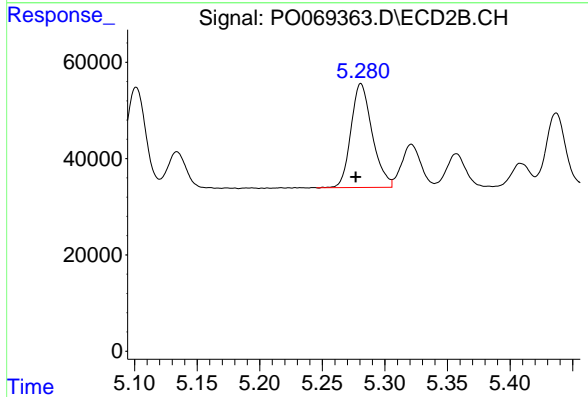
R.T.: 5.059 min
 Delta R.T.: 0.004 min
 Response: 207726
 Conc: 211.35 ng/ml



#7 AR-1016-5

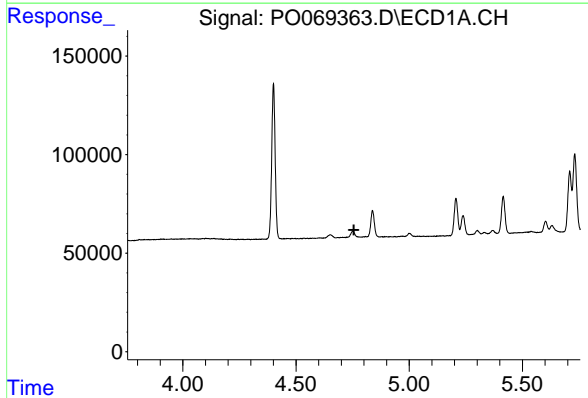
R.T.: 6.212 min
 Delta R.T.: -0.003 min
 Response: 223579
 Conc: 221.84 ng/ml

Instrument :
 ECD_O
 ClientSampleId :



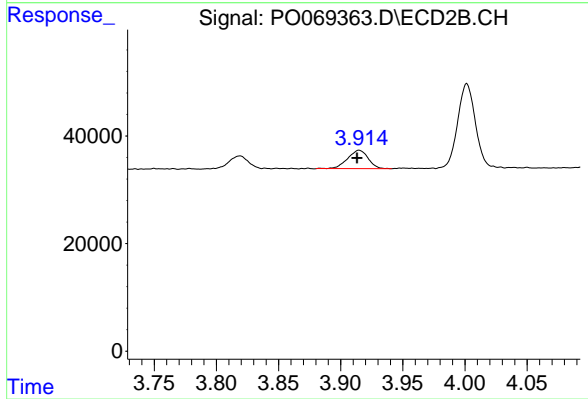
#7 AR-1016-5

R.T.: 5.281 min
 Delta R.T.: 0.004 min
 Response: 254625
 Conc: 209.19 ng/ml



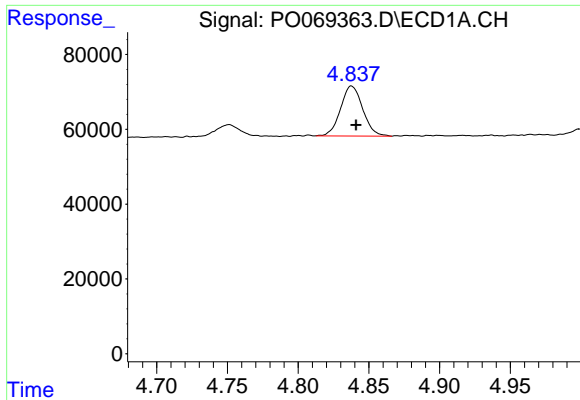
#9 AR-1221-2

R.T.: 0.000 min
 Exp R.T. : 4.755 min
 Response: 0
 Conc: N.D.



#9 AR-1221-2

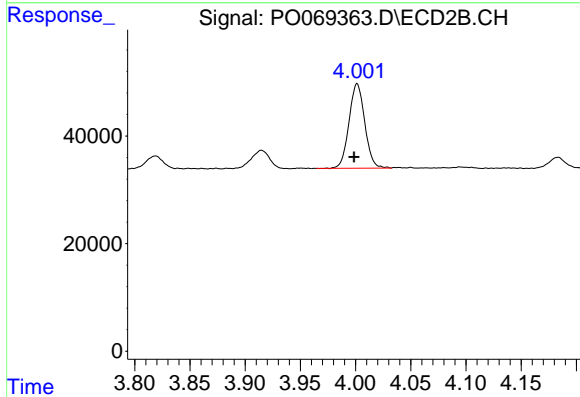
R.T.: 3.915 min
 Delta R.T.: 0.002 min
 Response: 39309
 Conc: 114.62 ng/ml



#10 AR-1221-3

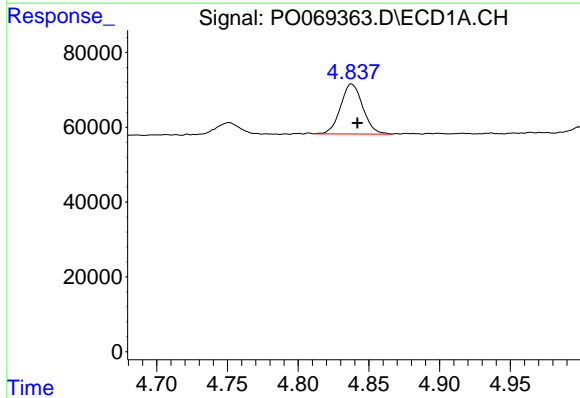
R.T.: 4.838 min
 Delta R.T.: -0.003 min
 Response: 145877
 Conc: 166.54 ng/ml

Instrument :
 ECD_O
 ClientSampled :



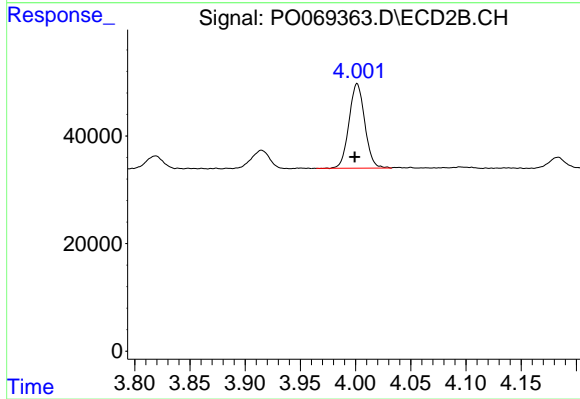
#10 AR-1221-3

R.T.: 4.002 min
 Delta R.T.: 0.003 min
 Response: 155712
 Conc: 144.97 ng/ml



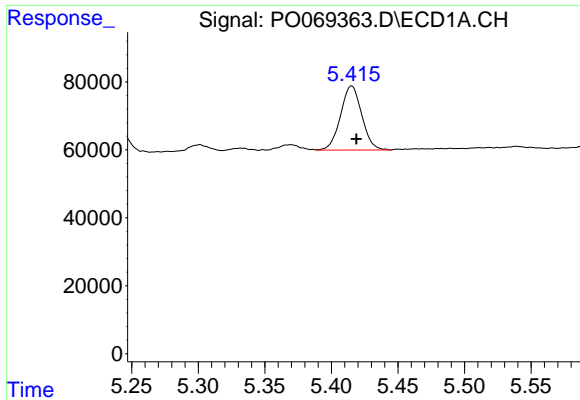
#11 AR-1232-1

R.T.: 4.838 min
 Delta R.T.: -0.004 min
 Response: 145877
 Conc: 200.00 ng/ml



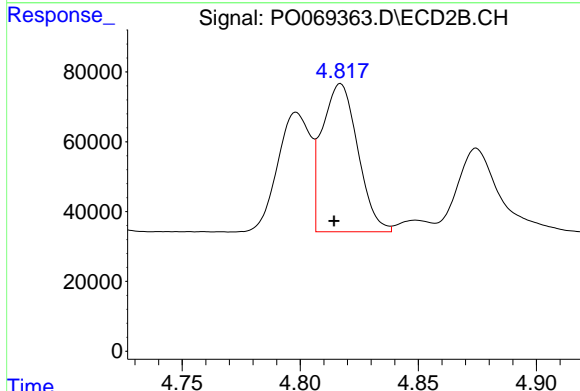
#11 AR-1232-1

R.T.: 4.002 min
 Delta R.T.: 0.002 min
 Response: 155712
 Conc: 176.81 ng/ml

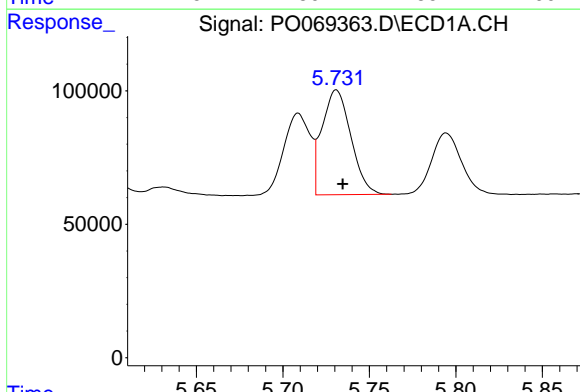


#12 AR-1232-2
 R.T.: 5.415 min
 Delta R.T.: -0.003 min
 Response: 209550
 Conc: 506.22 ng/ml

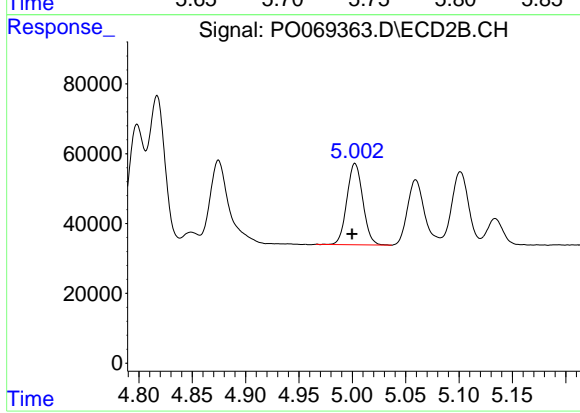
Instrument :
 ECD_O
 ClientSampled :



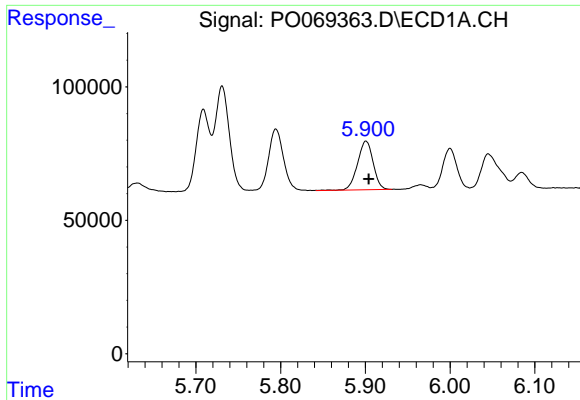
#12 AR-1232-2
 R.T.: 4.817 min
 Delta R.T.: 0.003 min
 Response: 446639
 Conc: 487.94 ng/ml



#13 AR-1232-3
 R.T.: 5.731 min
 Delta R.T.: -0.004 min
 Response: 456020
 Conc: 554.62 ng/ml



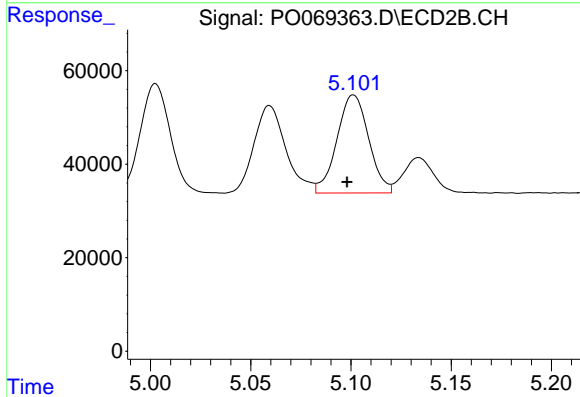
#13 AR-1232-3
 R.T.: 5.003 min
 Delta R.T.: 0.003 min
 Response: 242416
 Conc: 494.39 ng/ml



#14 AR-1232-4

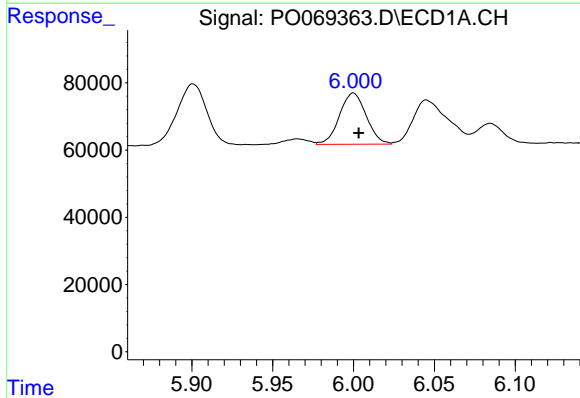
R.T.: 5.901 min
 Delta R.T.: -0.003 min
 Response: 234089
 Conc: 564.84 ng/ml

Instrument :
 ECD_O
 ClientSampleId :



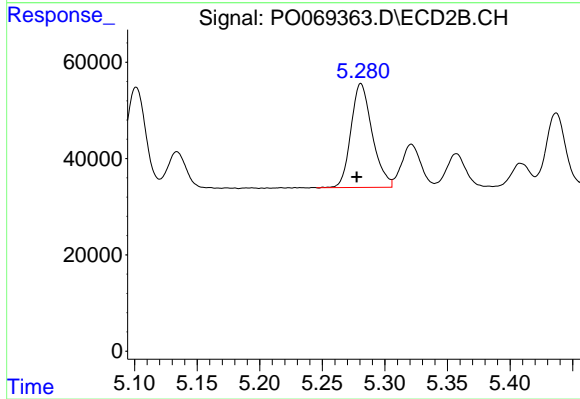
#14 AR-1232-4

R.T.: 5.101 min
 Delta R.T.: 0.003 min
 Response: 231655
 Conc: 547.67 ng/ml



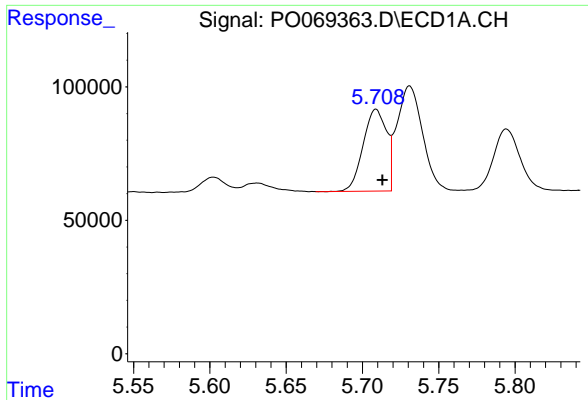
#15 AR-1232-5

R.T.: 6.000 min
 Delta R.T.: -0.003 min
 Response: 176130
 Conc: 620.92 ng/ml



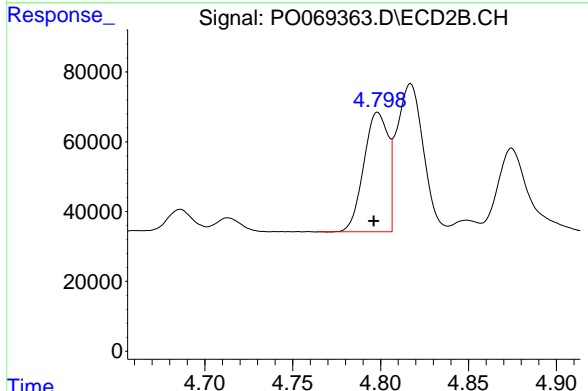
#15 AR-1232-5

R.T.: 5.281 min
 Delta R.T.: 0.003 min
 Response: 254625
 Conc: 520.58 ng/ml

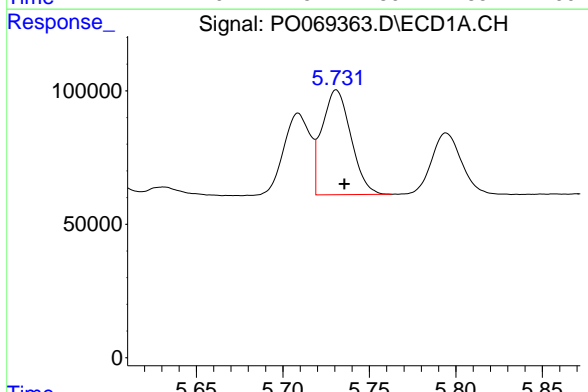


#16 AR-1242-1
 R.T.: 5.709 min
 Delta R.T.: -0.004 min
 Response: 328176
 Conc: 329.92 ng/ml

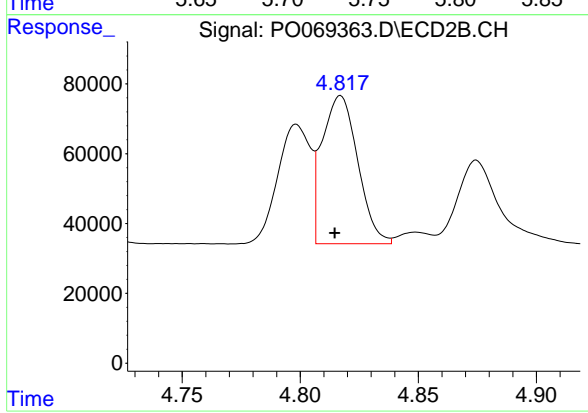
Instrument :
 ECD_O
 ClientSampled :



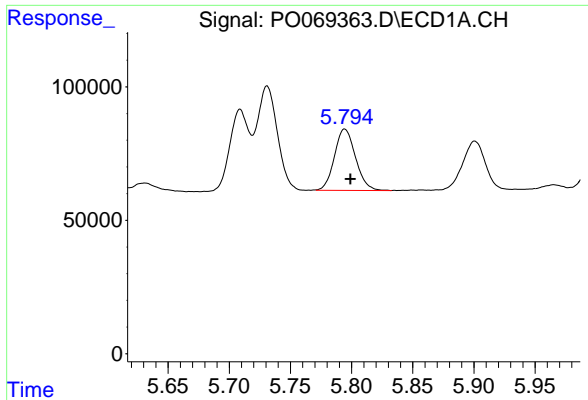
#16 AR-1242-1
 R.T.: 4.798 min
 Delta R.T.: 0.002 min
 Response: 329514
 Conc: 297.88 ng/ml



#17 AR-1242-2
 R.T.: 5.731 min
 Delta R.T.: -0.005 min
 Response: 456020
 Conc: 328.80 ng/ml

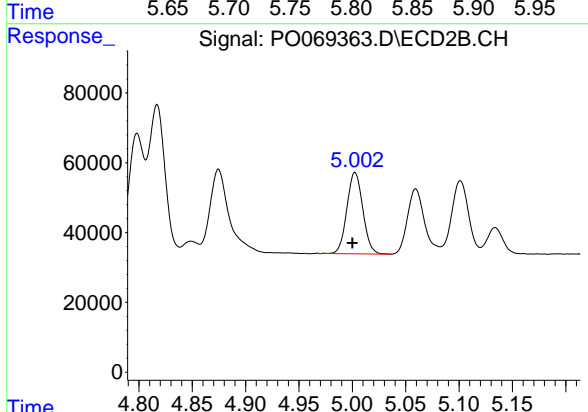


#17 AR-1242-2
 R.T.: 4.817 min
 Delta R.T.: 0.003 min
 Response: 446639
 Conc: 291.96 ng/ml

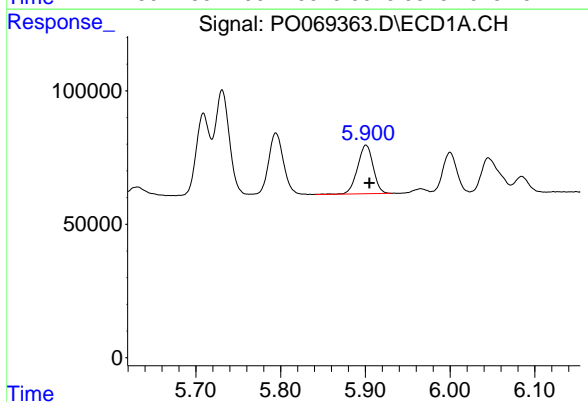


#18 AR-1242-3
 R.T.: 5.794 min
 Delta R.T.: -0.005 min
 Response: 275638
 Conc: 319.56 ng/ml

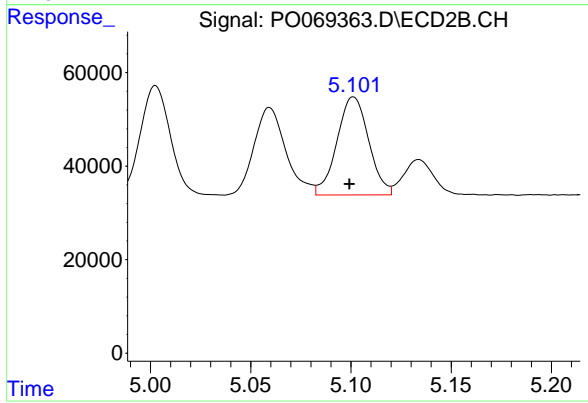
Instrument :
 ECD_O
 ClientSampleId :



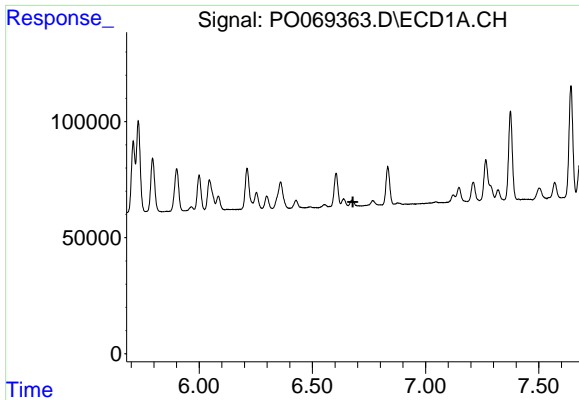
#18 AR-1242-3
 R.T.: 5.003 min
 Delta R.T.: 0.002 min
 Response: 242416
 Conc: 291.40 ng/ml



#19 AR-1242-4
 R.T.: 5.901 min
 Delta R.T.: -0.004 min
 Response: 234089
 Conc: 325.88 ng/ml



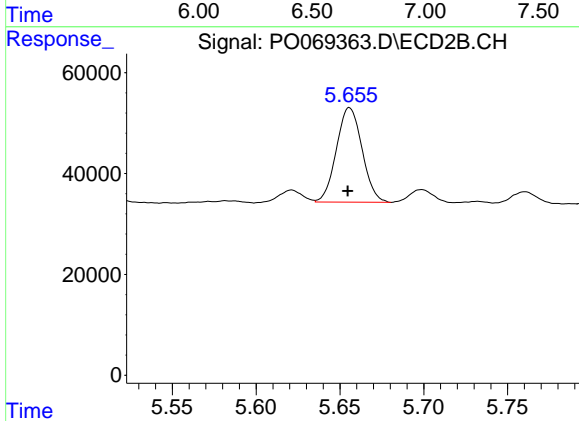
#19 AR-1242-4
 R.T.: 5.101 min
 Delta R.T.: 0.002 min
 Response: 231655
 Conc: 291.62 ng/ml



#20 AR-1242-5

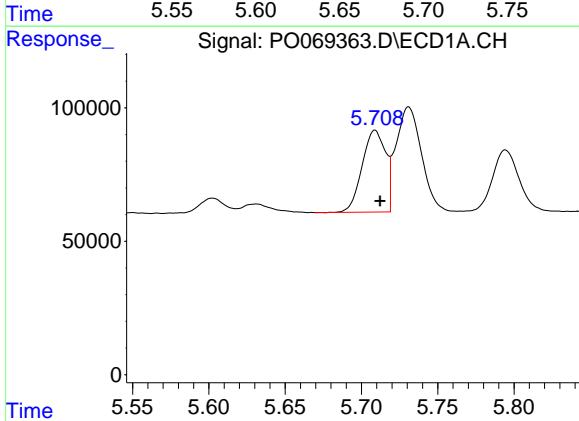
R.T.: 0.000 min
 Exp R.T.: 6.679 min
 Response: 0
 Conc: N.D.

Instrument :
 ECD_O
 ClientSampleId :



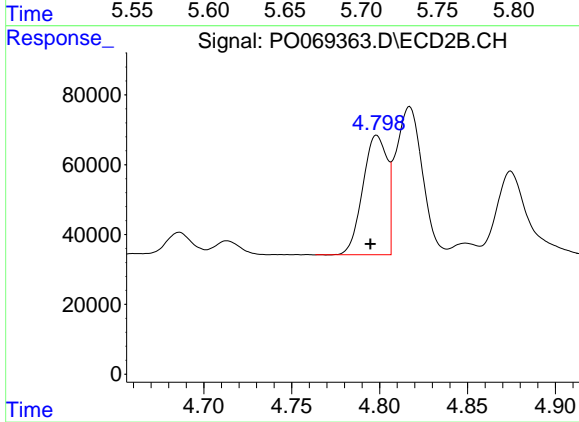
#20 AR-1242-5

R.T.: 5.656 min
 Delta R.T.: 0.001 min
 Response: 199730
 Conc: 179.47 ng/ml



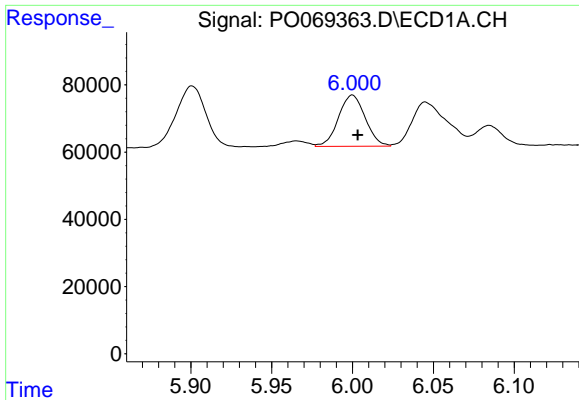
#21 AR-1248-1

R.T.: 5.709 min
 Delta R.T.: -0.003 min
 Response: 328176
 Conc: 420.96 ng/ml



#21 AR-1248-1

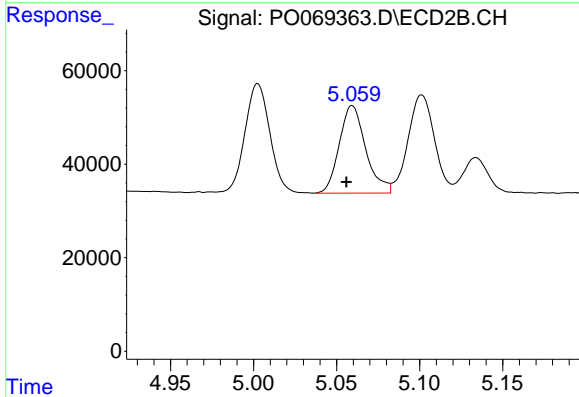
R.T.: 4.798 min
 Delta R.T.: 0.004 min
 Response: 329514
 Conc: 380.98 ng/ml



#22 AR-1248-2

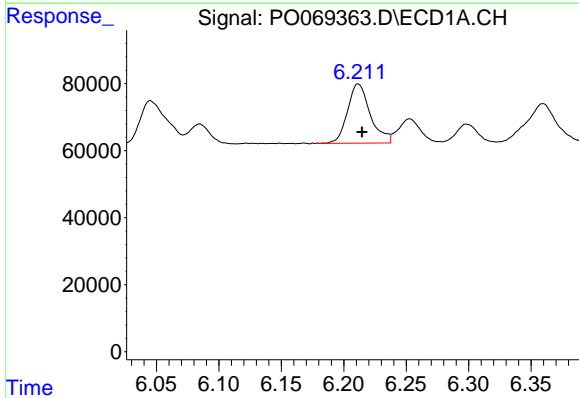
R.T.: 6.000 min
Delta R.T.: -0.003 min
Response: 176130
Conc: 172.25 ng/ml

Instrument :
ECD_O
ClientSampleId :



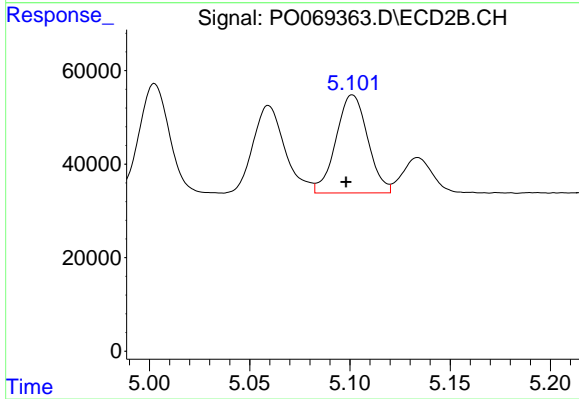
#22 AR-1248-2

R.T.: 5.059 min
Delta R.T.: 0.003 min
Response: 207726
Conc: 172.19 ng/ml



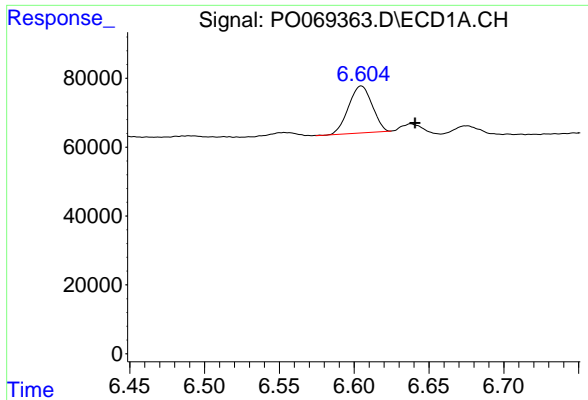
#23 AR-1248-3

R.T.: 6.212 min
Delta R.T.: -0.003 min
Response: 223579
Conc: 180.72 ng/ml



#23 AR-1248-3

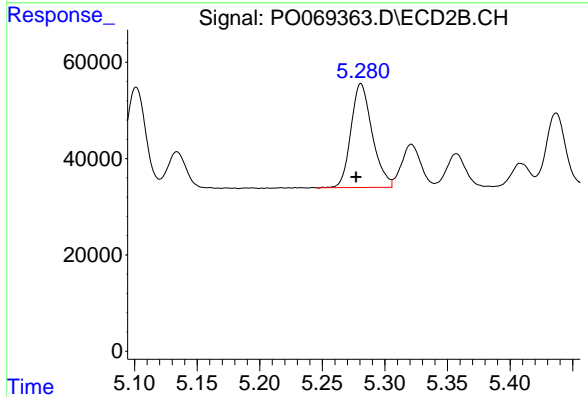
R.T.: 5.101 min
Delta R.T.: 0.003 min
Response: 231655
Conc: 204.74 ng/ml



#24 AR-1248-4

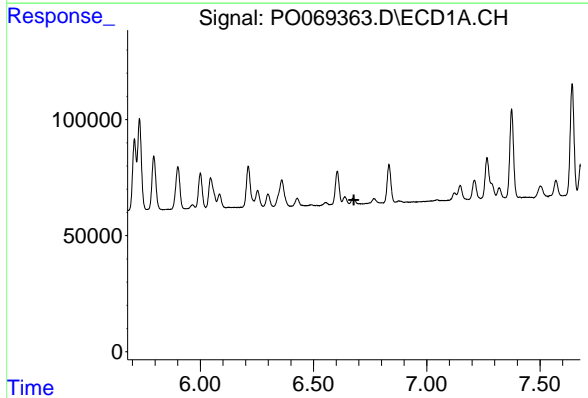
R.T.: 6.605 min
 Delta R.T.: -0.036 min
 Response: 150098
 Conc: 99.80 ng/ml

Instrument :
 ECD_O
 ClientSampled :



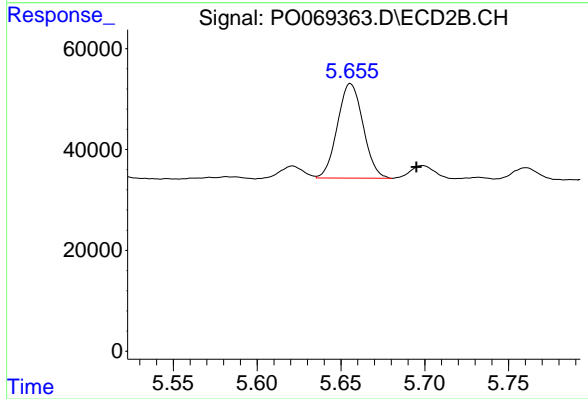
#24 AR-1248-4

R.T.: 5.281 min
 Delta R.T.: 0.004 min
 Response: 254625
 Conc: 176.09 ng/ml



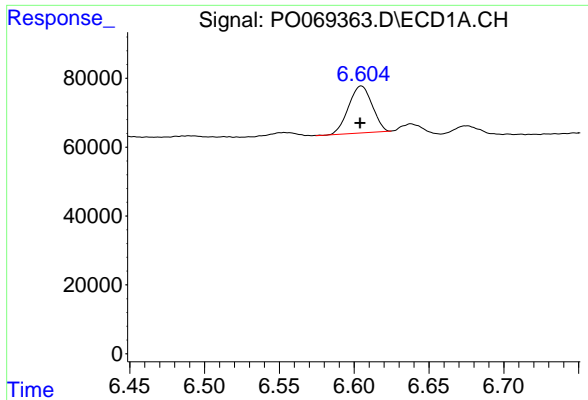
#25 AR-1248-5

R.T.: 0.000 min
 Exp R.T. : 6.678 min
 Response: 0
 Conc: N.D.



#25 AR-1248-5

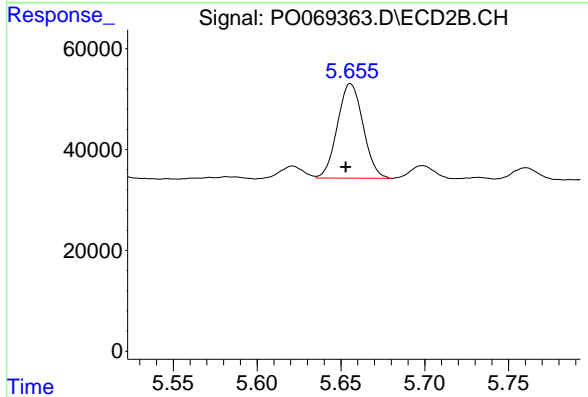
R.T.: 5.656 min
 Delta R.T.: -0.039 min
 Response: 199730
 Conc: 138.06 ng/ml



#26 AR-1254-1

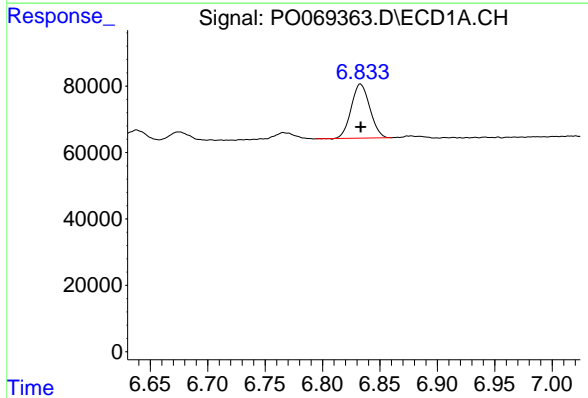
R.T.: 6.605 min
 Delta R.T.: 0.000 min
 Response: 150098
 Conc: 102.20 ng/ml

Instrument :
 ECD_O
 ClientSampleId :



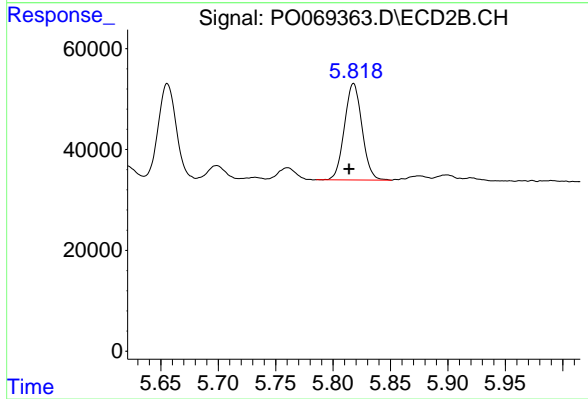
#26 AR-1254-1

R.T.: 5.656 min
 Delta R.T.: 0.003 min
 Response: 199730
 Conc: 85.07 ng/ml



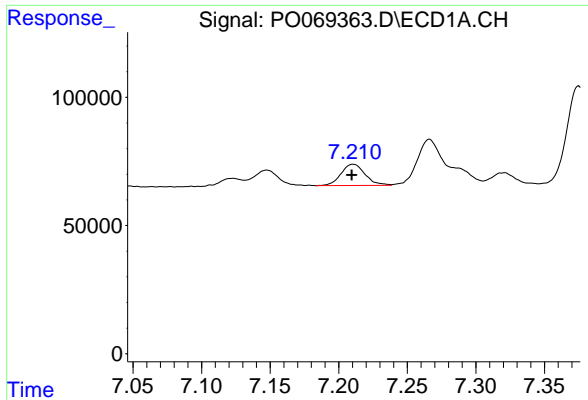
#27 AR-1254-2

R.T.: 6.833 min
 Delta R.T.: 0.000 min
 Response: 184247
 Conc: 76.67 ng/ml



#27 AR-1254-2

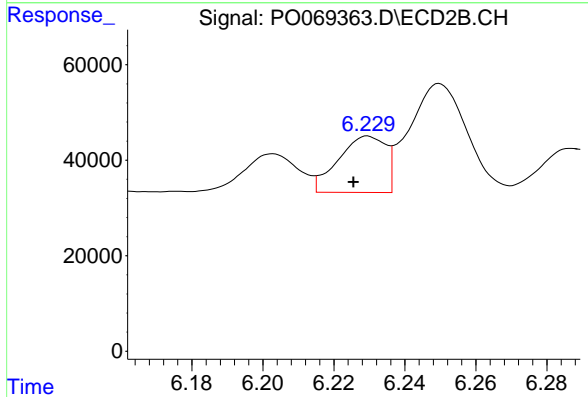
R.T.: 5.818 min
 Delta R.T.: 0.004 min
 Response: 204893
 Conc: 96.38 ng/ml



#28 AR-1254-3

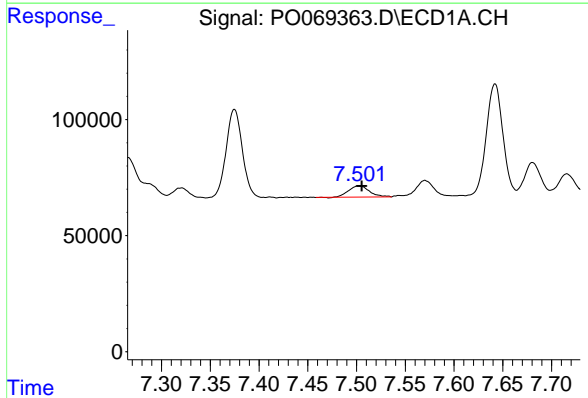
R.T.: 7.211 min
 Delta R.T.: 0.001 min
 Response: 101243
 Conc: 39.29 ng/ml

Instrument :
 ECD_O
 ClientSampleId :



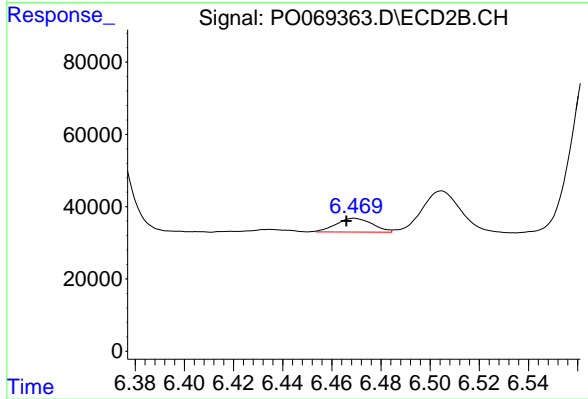
#28 AR-1254-3

R.T.: 6.230 min
 Delta R.T.: 0.004 min
 Response: 109417
 Conc: 32.10 ng/ml



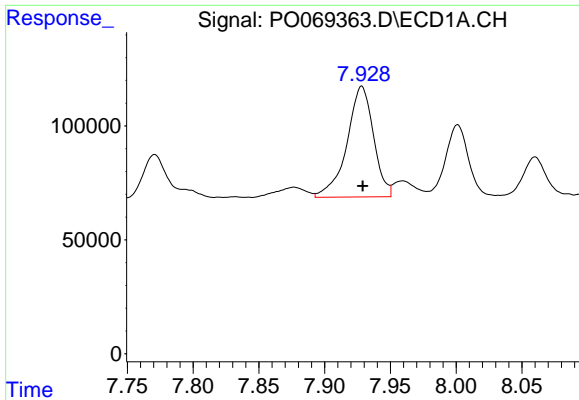
#29 AR-1254-4

R.T.: 7.502 min
 Delta R.T.: -0.003 min
 Response: 70378
 Conc: 32.91 ng/ml



#29 AR-1254-4

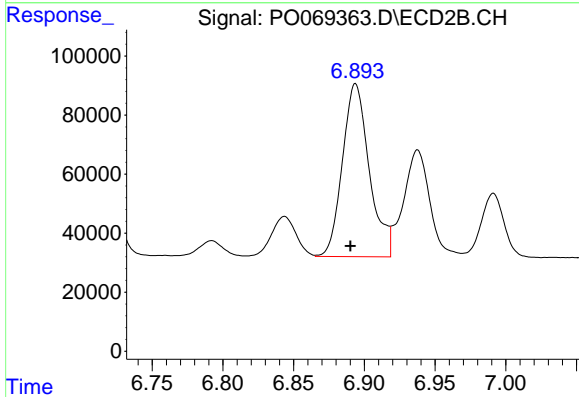
R.T.: 6.469 min
 Delta R.T.: 0.003 min
 Response: 39241
 Conc: 17.29 ng/ml



#30 AR-1254-5

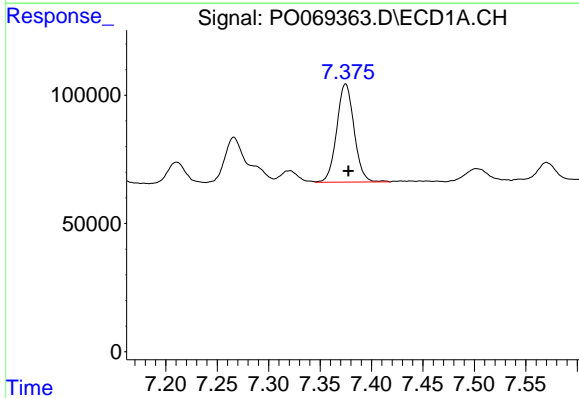
R.T.: 7.928 min
 Delta R.T.: 0.000 min
 Response: 683383
 Conc: 326.74 ng/ml

Instrument :
 ECD_O
 ClientSampled :



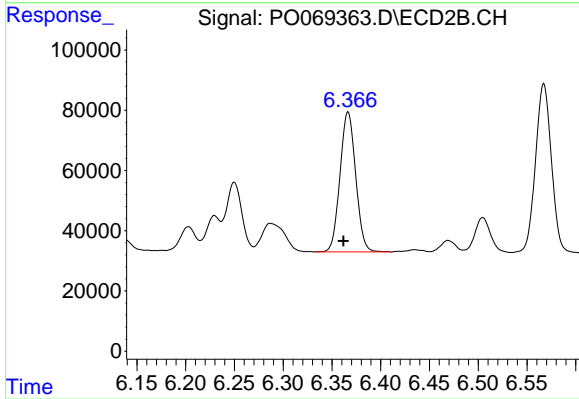
#30 AR-1254-5

R.T.: 6.894 min
 Delta R.T.: 0.004 min
 Response: 774442
 Conc: 243.17 ng/ml



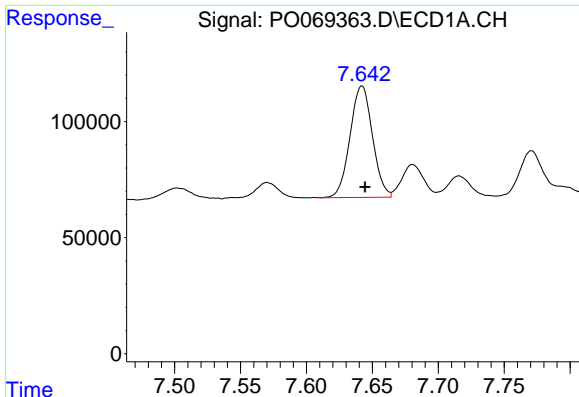
#31 AR-1260-1

R.T.: 7.375 min
 Delta R.T.: -0.003 min
 Response: 450871
 Conc: 236.25 ng/ml



#31 AR-1260-1

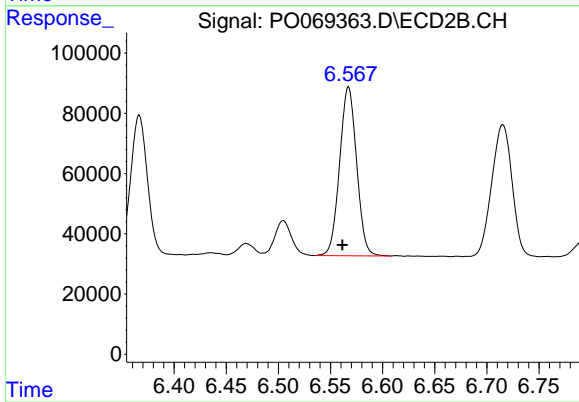
R.T.: 6.367 min
 Delta R.T.: 0.005 min
 Response: 520243
 Conc: 222.33 ng/ml



#32 AR-1260-2

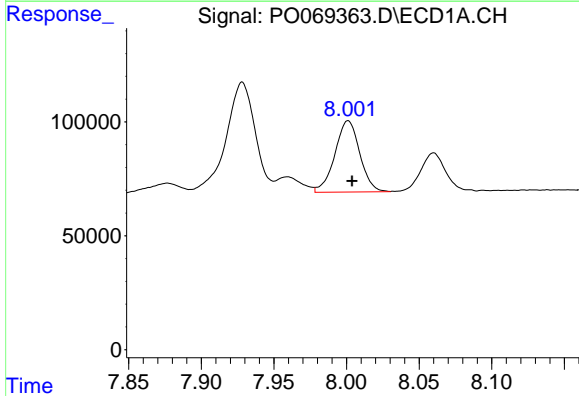
R.T.: 7.642 min
 Delta R.T.: -0.002 min
 Response: 568809
 Conc: 243.03 ng/ml

Instrument :
 ECD_O
 ClientSampleId :



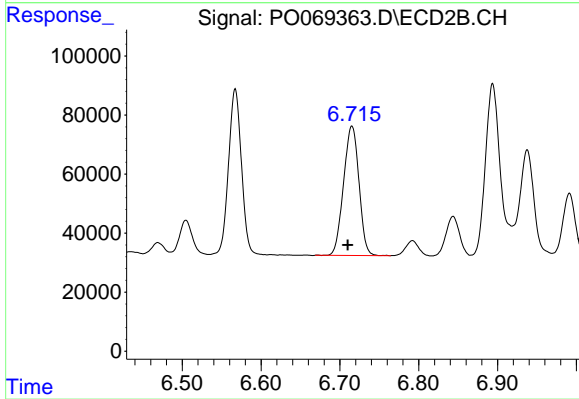
#32 AR-1260-2

R.T.: 6.567 min
 Delta R.T.: 0.006 min
 Response: 637130
 Conc: 223.83 ng/ml



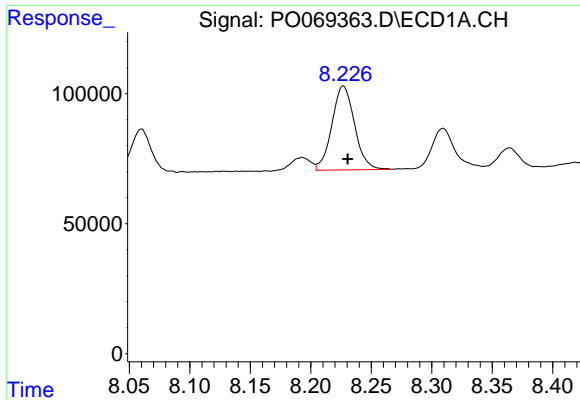
#33 AR-1260-3

R.T.: 8.001 min
 Delta R.T.: -0.003 min
 Response: 373181
 Conc: 210.06 ng/ml



#33 AR-1260-3

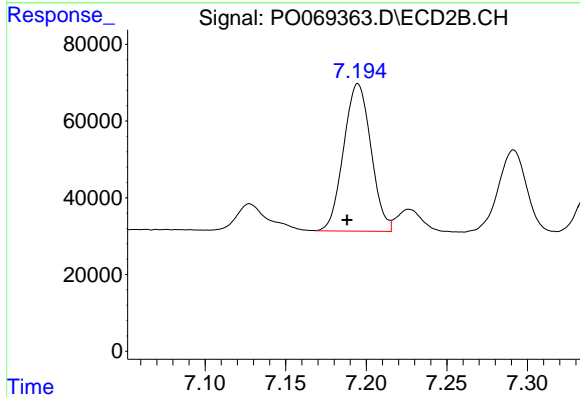
R.T.: 6.715 min
 Delta R.T.: 0.005 min
 Response: 595935
 Conc: 221.57 ng/ml



#34 AR-1260-4

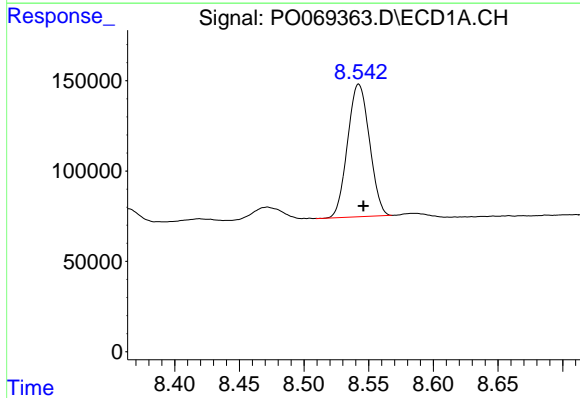
R.T.: 8.227 min
 Delta R.T.: -0.004 min
 Response: 421611
 Conc: 202.17 ng/ml

Instrument :
 ECD_O
 ClientSampleId :



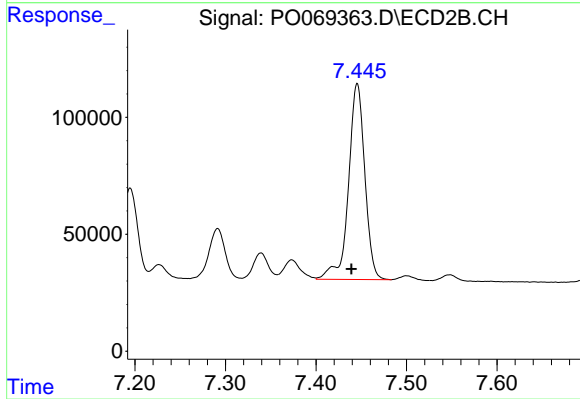
#34 AR-1260-4

R.T.: 7.195 min
 Delta R.T.: 0.007 min
 Response: 454468
 Conc: 189.69 ng/ml



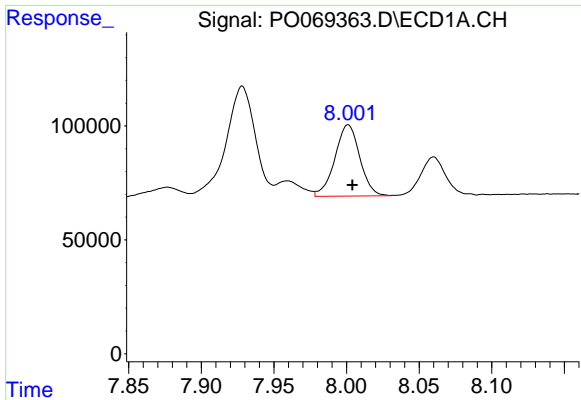
#35 AR-1260-5

R.T.: 8.542 min
 Delta R.T.: -0.004 min
 Response: 864394
 Conc: 196.66 ng/ml



#35 AR-1260-5

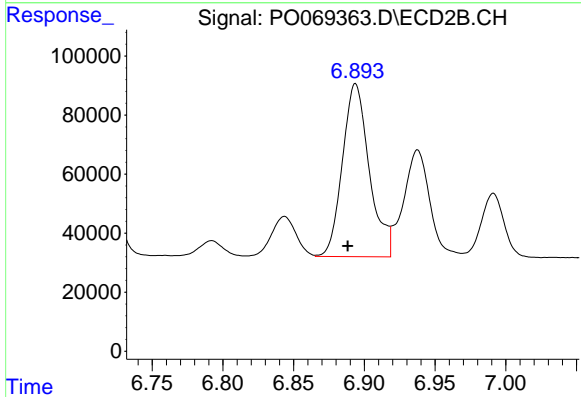
R.T.: 7.446 min
 Delta R.T.: 0.006 min
 Response: 1050843
 Conc: 181.39 ng/ml



#36 AR-1262-1

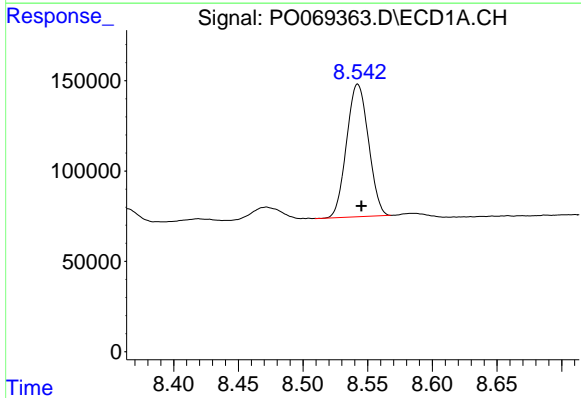
R.T.: 8.001 min
 Delta R.T.: -0.003 min
 Response: 373181
 Conc: 147.15 ng/ml

Instrument :
 ECD_O
 ClientSampleId :



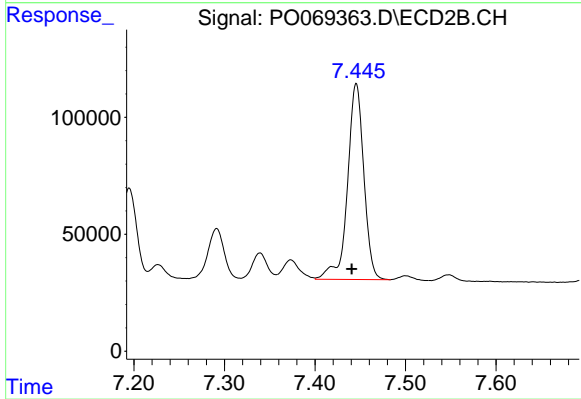
#36 AR-1262-1

R.T.: 6.894 min
 Delta R.T.: 0.006 min
 Response: 774442
 Conc: 442.01 ng/ml



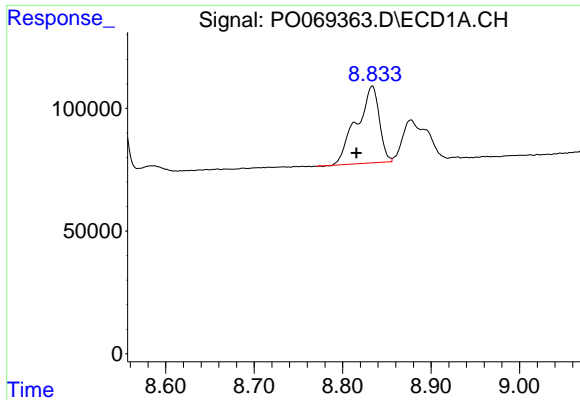
#37 AR-1262-2

R.T.: 8.542 min
 Delta R.T.: -0.003 min
 Response: 864394
 Conc: 179.99 ng/ml



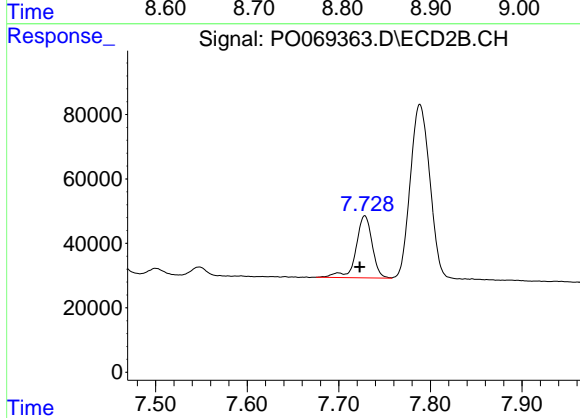
#37 AR-1262-2

R.T.: 7.446 min
 Delta R.T.: 0.005 min
 Response: 1050843
 Conc: 173.77 ng/ml

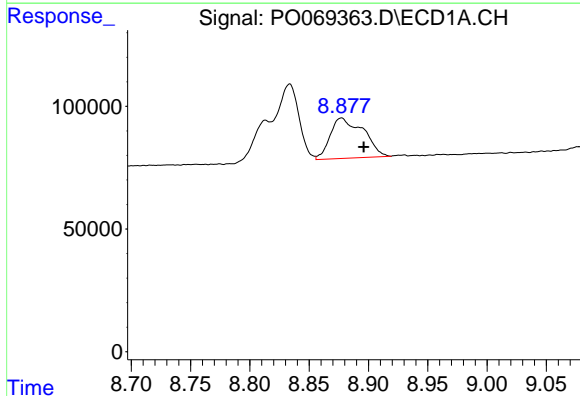


#38 AR-1262-3
 R.T.: 8.834 min
 Delta R.T.: 0.018 min
 Response: 556708
 Conc: 262.17 ng/ml

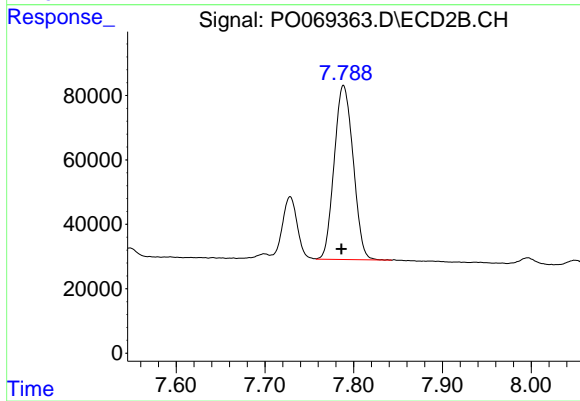
Instrument :
 ECD_O
 ClientSampleId :



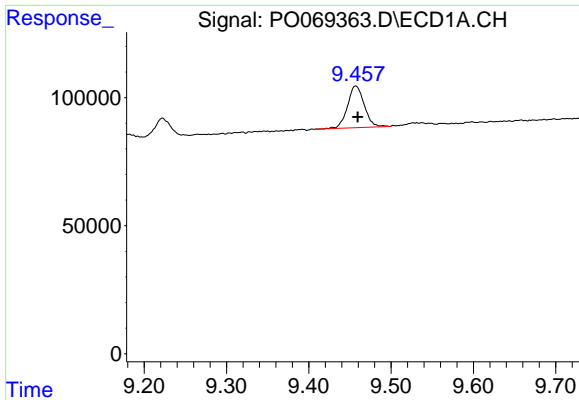
#38 AR-1262-3
 R.T.: 7.728 min
 Delta R.T.: 0.005 min
 Response: 236516
 Conc: 95.29 ng/ml



#39 AR-1262-4
 R.T.: 8.877 min
 Delta R.T.: -0.019 min
 Response: 319434
 Conc: 130.12 ng/ml



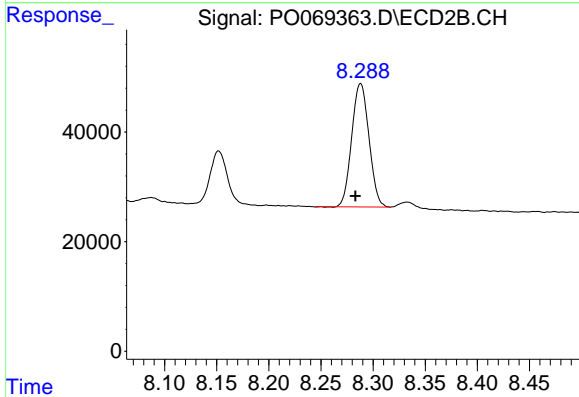
#39 AR-1262-4
 R.T.: 7.789 min
 Delta R.T.: 0.002 min
 Response: 801753
 Conc: 172.97 ng/ml



#40 AR-1262-5

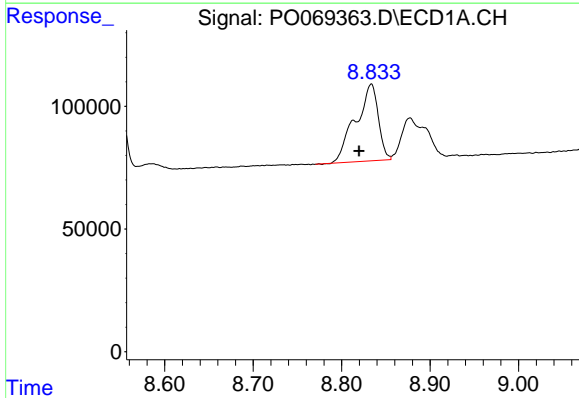
R.T.: 9.457 min
 Delta R.T.: -0.003 min
 Response: 230302
 Conc: 128.35 ng/ml

Instrument :
 ECD_O
 ClientSampleId :



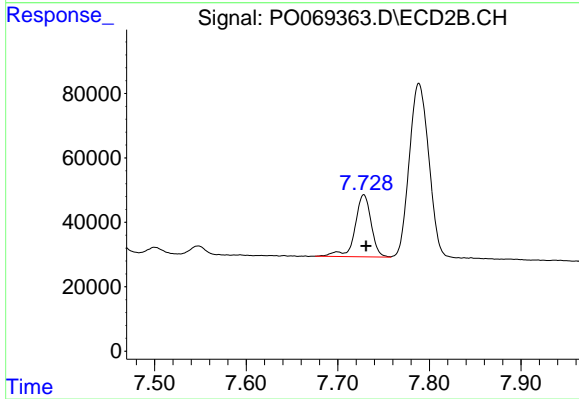
#40 AR-1262-5

R.T.: 8.288 min
 Delta R.T.: 0.005 min
 Response: 259395
 Conc: 111.64 ng/ml



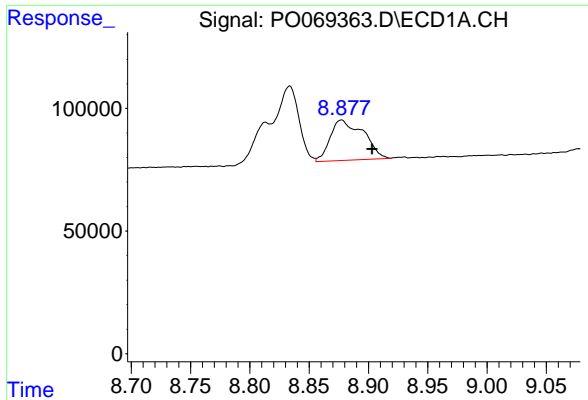
#41 AR-1268-1

R.T.: 8.834 min
 Delta R.T.: 0.014 min
 Response: 556708
 Conc: 83.05 ng/ml



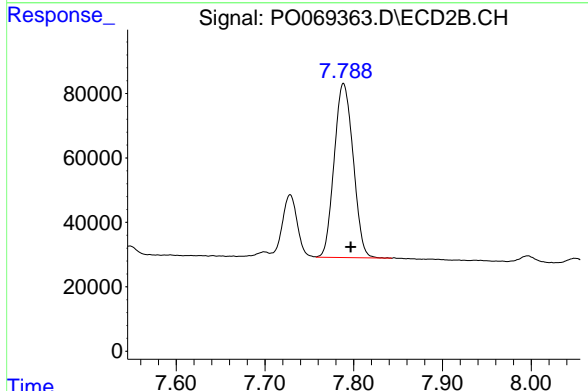
#41 AR-1268-1

R.T.: 7.728 min
 Delta R.T.: -0.003 min
 Response: 236516
 Conc: 33.41 ng/ml

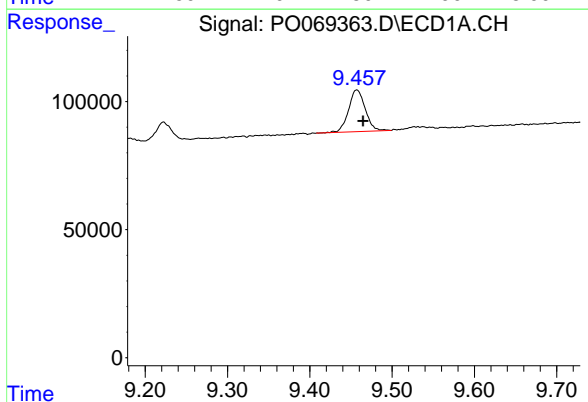


#42 AR-1268-2
 R.T.: 8.877 min
 Delta R.T.: -0.026 min
 Response: 319434
 Conc: 50.02 ng/ml

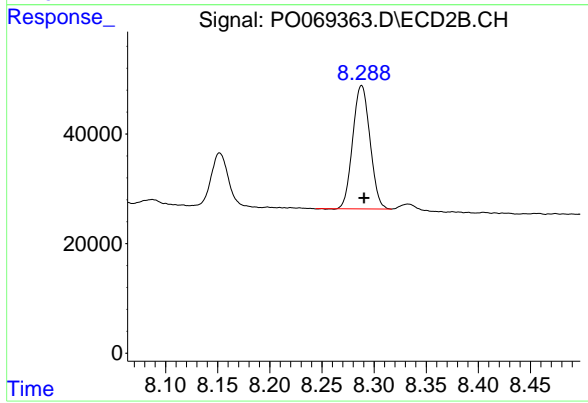
Instrument :
 ECD_O
 ClientSampleId :



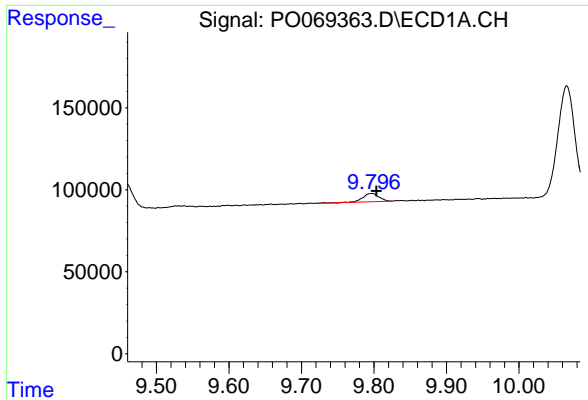
#42 AR-1268-2
 R.T.: 7.789 min
 Delta R.T.: -0.008 min
 Response: 801753
 Conc: 124.20 ng/ml



#44 AR-1268-4
 R.T.: 9.457 min
 Delta R.T.: -0.008 min
 Response: 230302
 Conc: 93.83 ng/ml



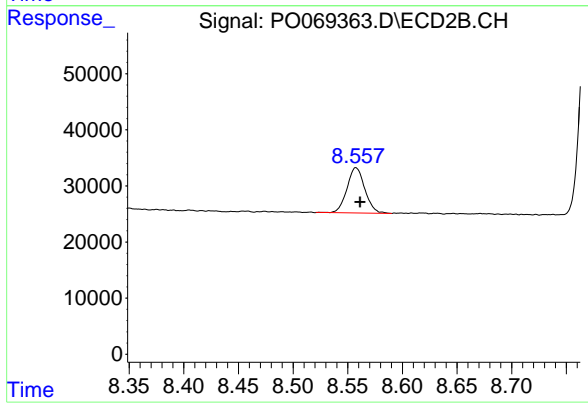
#44 AR-1268-4
 R.T.: 8.288 min
 Delta R.T.: -0.002 min
 Response: 259395
 Conc: 101.32 ng/ml



#45 AR-1268-5

R.T.: 9.797 min
Delta R.T.: -0.006 min
Response: 80572
Conc: 4.38 ng/ml

Instrument :
ECD_O
ClientSampleId :



#45 AR-1268-5

R.T.: 8.558 min
Delta R.T.: -0.004 min
Response: 91260
Conc: 5.29 ng/ml