

Data Path : Z:\pestpcbsrv\HPCHEM1\ECD\_O\Data\P0070323\  
 Data File : P0096150.D  
 Signal(s) : Signal #1: ECD1A.ch Signal #2: ECD2B.ch  
 Acq On : 03 Jul 2023 14:42  
 Operator : YP/AJ  
 Sample : AR1660CCC500  
 Misc :  
 ALS Vial : 3 Sample Multiplier: 1

Instrument :  
 ECD\_O  
 ClientSampleId :  
 AR1660CCC500

Integration File signal 1: autoint1.e  
 Integration File signal 2: autoint2.e  
 Quant Time: Jul 04 02:44:04 2023  
 Quant Method : Z:\pestpcbsrv\HPCHEM1\ECD\_O\methods\P0070123.M  
 Quant Title : GC EXTRACTABLES  
 QLast Update : Tue Jul 04 02:14:24 2023  
 Response via : Initial Calibration  
 Integrator: ChemStation

Volume Inj. : 2 µl  
 Signal #1 Phase : ZB-MR1 Signal #2 Phase: ZB-MR2  
 Signal #1 Info : 30Mx0.32mmx 0.50µ Signal #2 Info : 30M x 0.32mm x 0.25µm

Compound	RT#1	RT#2	Resp#1	Resp#2	ng/ml	ng/ml
-----						
System Monitoring Compounds						
1) SA Tetrachlo...	4.418	3.635	143.1E6	63505864	46.117	47.102
2) SA Decachlor...	10.250	8.671	108.2E6	53937514	53.881	46.147
Target Compounds						
3) L1 AR-1016-1	5.599	4.724	40098285	21832367	457.883	478.381
4) L1 AR-1016-2	5.622	4.742	57775516	35931141	456.202	575.953 #
5) L1 AR-1016-3	5.684	4.919	35810988	16808844	434.432	500.583
6) L1 AR-1016-4	5.783	4.962	28115560	14060231	430.471	477.935
7) L1 AR-1016-5	6.082	5.176	29501690	17903132	454.471	487.965
31) L7 AR-1260-1	7.217	6.215	58362789	32523179	489.052	455.947
32) L7 AR-1260-2	7.476	6.404	59270090	38086768	457.549	452.486
33) L7 AR-1260-3	7.760	6.558	72160277	35322665	497.149	435.731
34) L7 AR-1260-4	8.065	7.032	48550420	25585555	497.108	448.044
35) L7 AR-1260-5	8.390	7.275	90363258	57990045	524.765	450.312

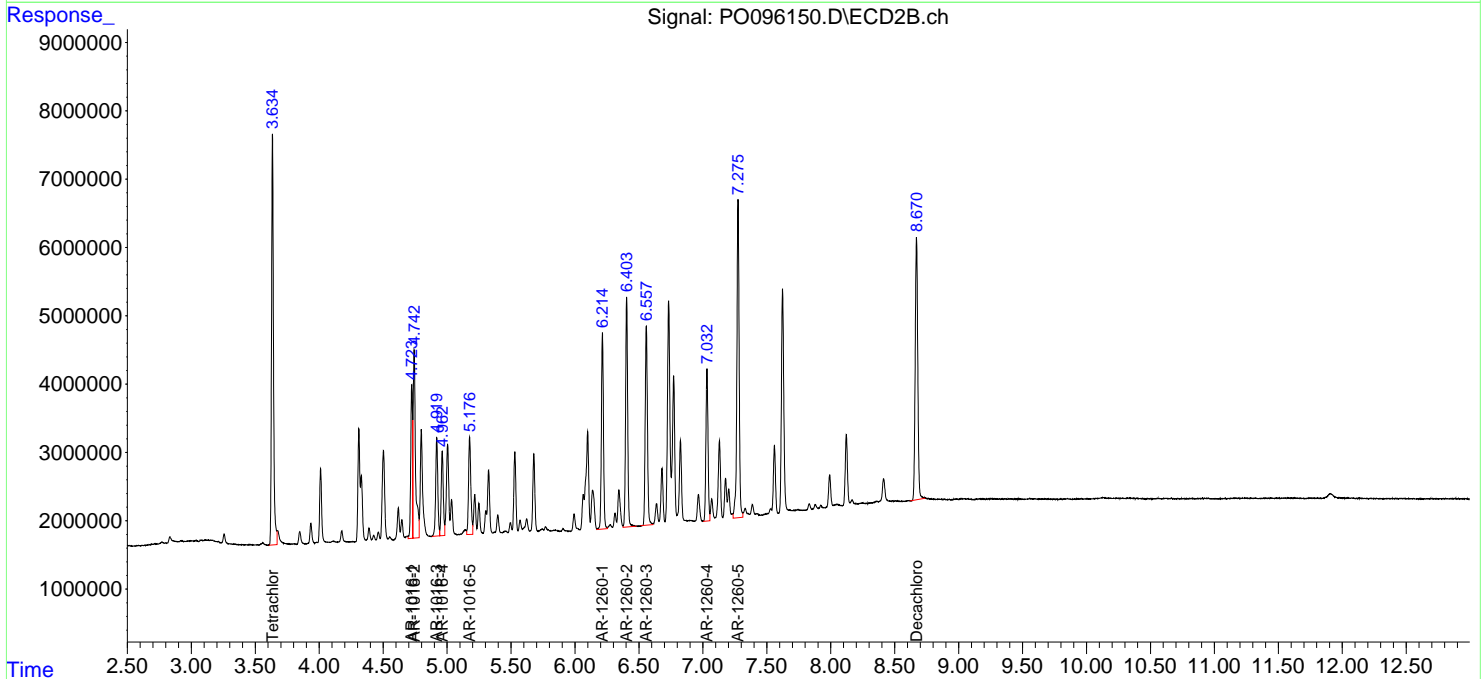
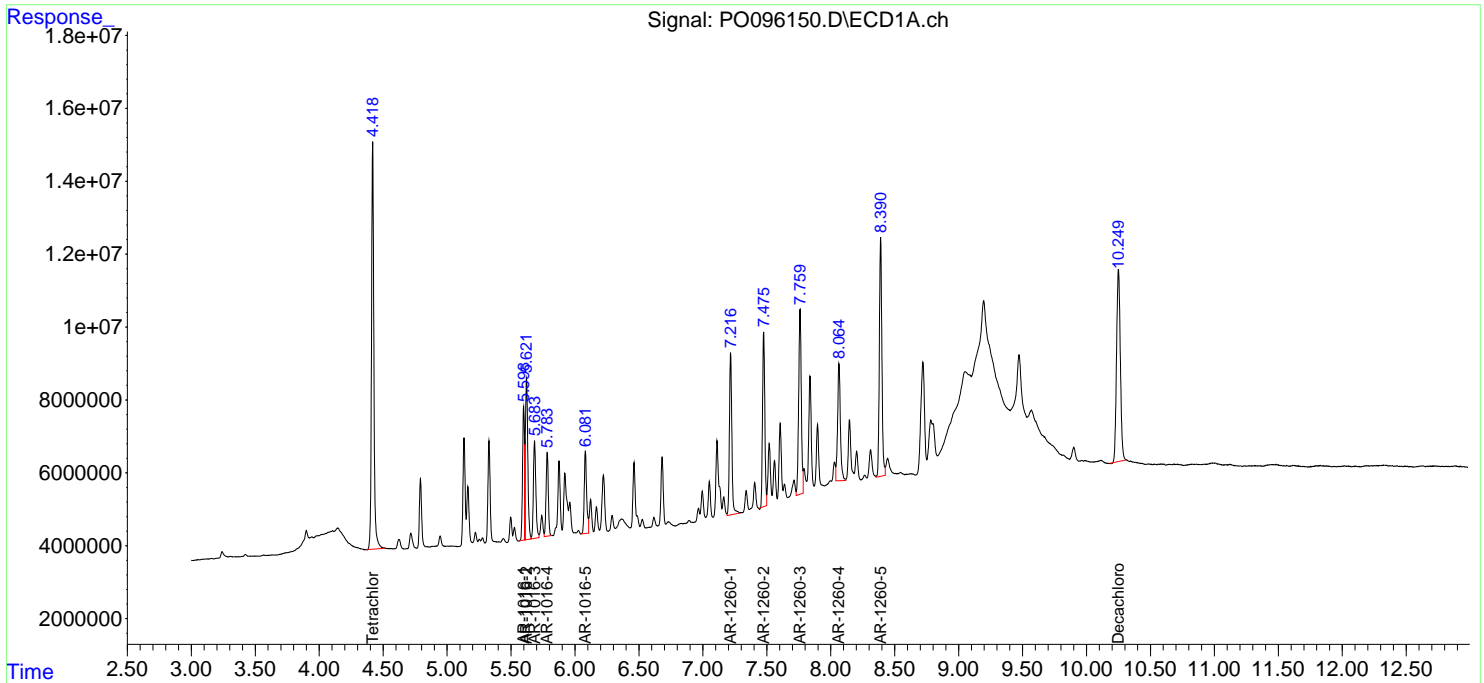
(f)=RT Delta > 1/2 Window (#)=Amounts differ by > 25% (m)=manual int.

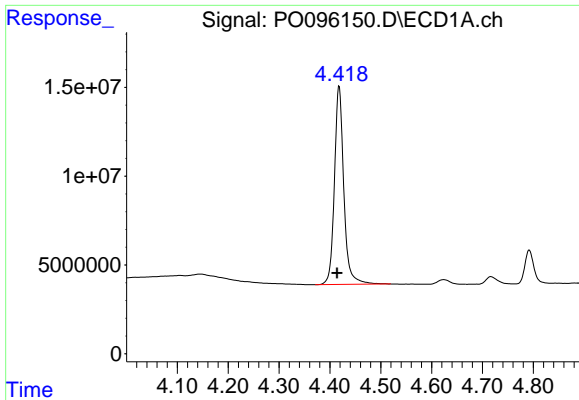
Data Path : Z:\pestpcbsrv\HPCHEM1\ECD\_O\Data\P0070323\  
 Data File : P0096150.D  
 Signal(s) : Signal #1: ECD1A.ch Signal #2: ECD2B.ch  
 Acq On : 03 Jul 2023 14:42  
 Operator : YP/AJ  
 Sample : AR1660CCC500  
 Misc :  
 ALS Vial : 3 Sample Multiplier: 1

Instrument :  
 ECD\_O  
 ClientSampleId :  
 AR1660CCC500

Integration File signal 1: autoint1.e  
 Integration File signal 2: autoint2.e  
 Quant Time: Jul 04 02:44:04 2023  
 Quant Method : Z:\pestpcbsrv\HPCHEM1\ECD\_O\methods\P0070123.M  
 Quant Title : GC EXTRACTABLES  
 QLast Update : Tue Jul 04 02:14:24 2023  
 Response via : Initial Calibration  
 Integrator: ChemStation

Volume Inj. : 2 µl  
 Signal #1 Phase : ZB-MR1 Signal #2 Phase: ZB-MR2  
 Signal #1 Info : 30Mx0.32mmx 0.50µ Signal #2 Info : 30M x 0.32mm x 0.25µm

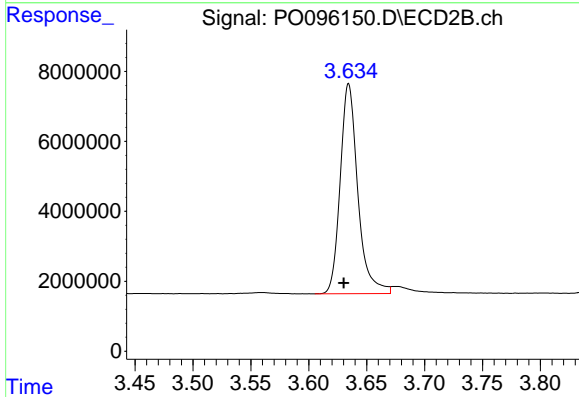




#1 Tetrachloro-m-xylene

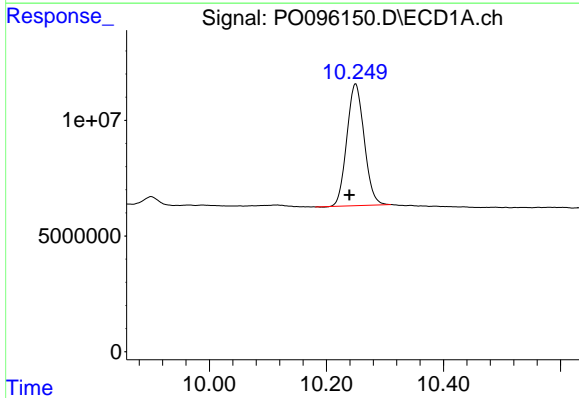
R.T.: 4.418 min  
 Delta R.T.: 0.004 min  
 Response: 143086950  
 Conc: 46.12 ng/ml

Instrument :  
 ECD\_O  
 ClientSampleId :  
 AR1660CCC500



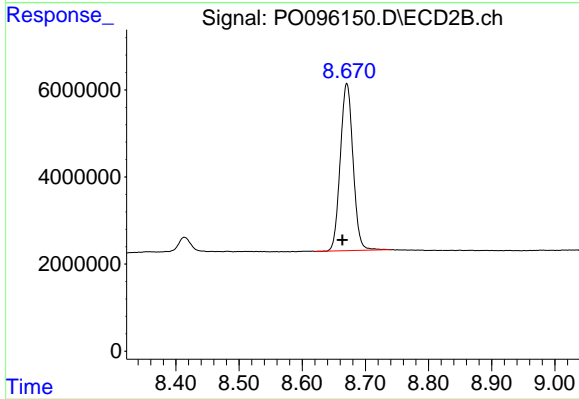
#1 Tetrachloro-m-xylene

R.T.: 3.635 min  
 Delta R.T.: 0.004 min  
 Response: 63505864  
 Conc: 47.10 ng/ml



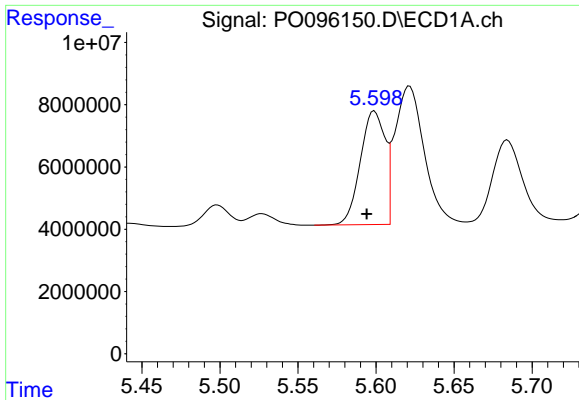
#2 Decachlorobiphenyl

R.T.: 10.250 min  
 Delta R.T.: 0.010 min  
 Response: 108159785  
 Conc: 53.88 ng/ml



#2 Decachlorobiphenyl

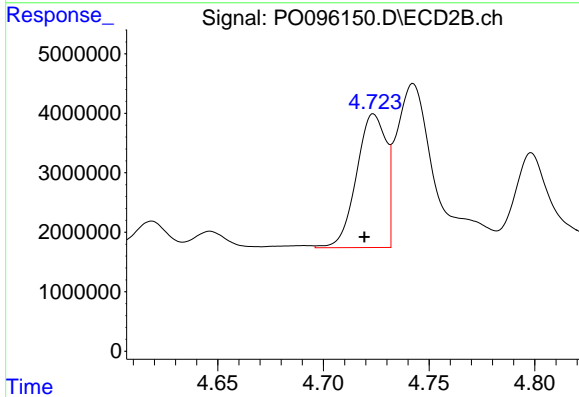
R.T.: 8.671 min  
 Delta R.T.: 0.007 min  
 Response: 53937514  
 Conc: 46.15 ng/ml



#3 AR-1016-1

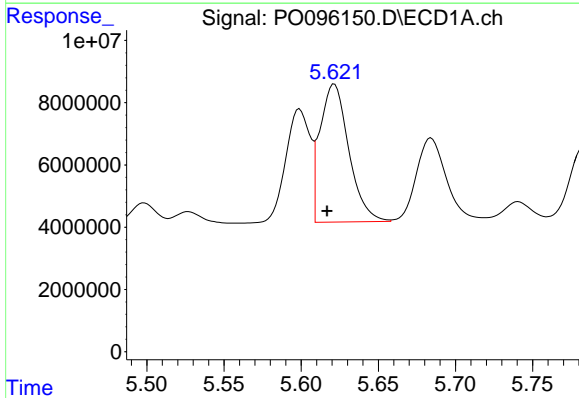
R.T.: 5.599 min  
 Delta R.T.: 0.005 min  
 Response: 40098285  
 Conc: 457.88 ng/ml

Instrument :  
 ECD\_O  
 ClientSampleId :  
 AR1660CCC500



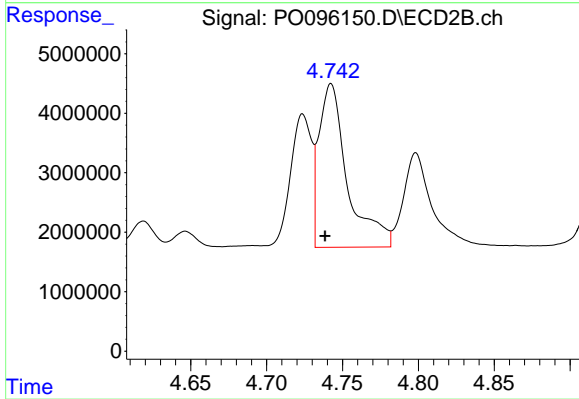
#3 AR-1016-1

R.T.: 4.724 min  
 Delta R.T.: 0.004 min  
 Response: 21832367  
 Conc: 478.38 ng/ml



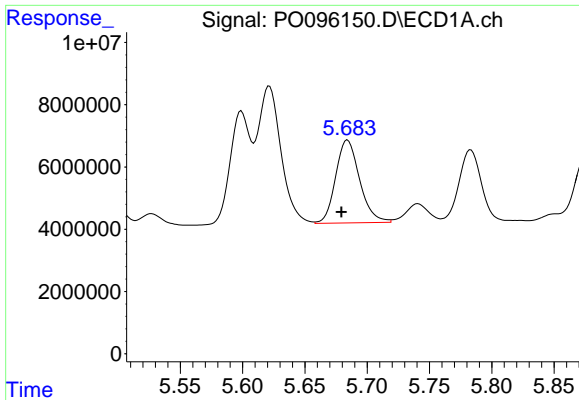
#4 AR-1016-2

R.T.: 5.622 min  
 Delta R.T.: 0.005 min  
 Response: 57775516  
 Conc: 456.20 ng/ml



#4 AR-1016-2

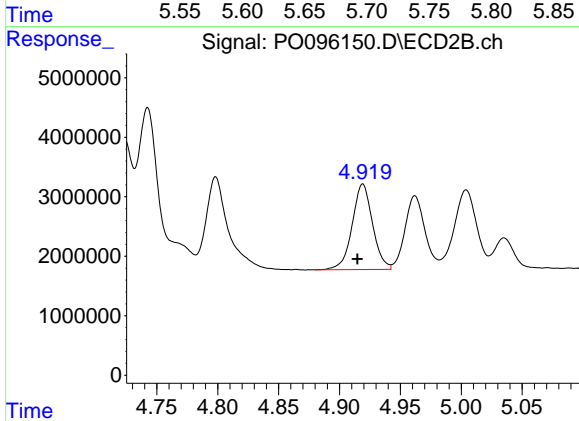
R.T.: 4.742 min  
 Delta R.T.: 0.004 min  
 Response: 35931141  
 Conc: 575.95 ng/ml



#5 AR-1016-3

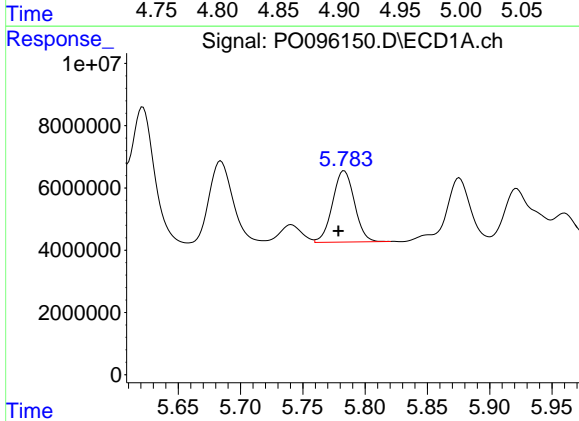
R.T.: 5.684 min  
 Delta R.T.: 0.005 min  
 Response: 35810988  
 Conc: 434.43 ng/ml

Instrument :  
 ECD\_O  
 ClientSampleId :  
 AR1660CCC500



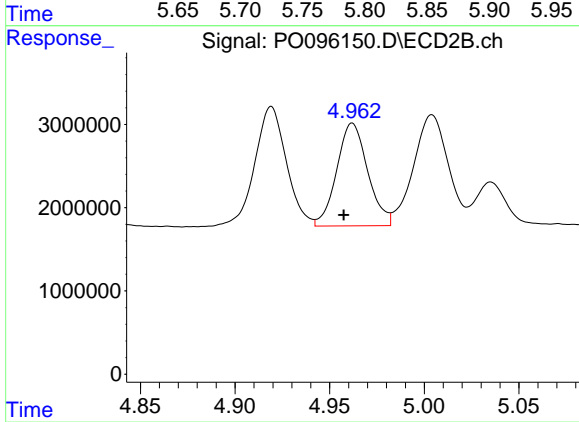
#5 AR-1016-3

R.T.: 4.919 min  
 Delta R.T.: 0.004 min  
 Response: 16808844  
 Conc: 500.58 ng/ml



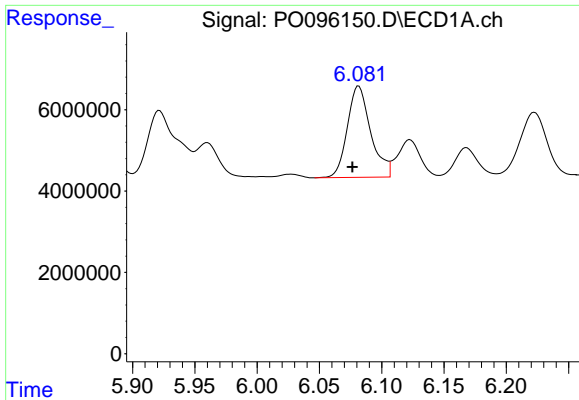
#6 AR-1016-4

R.T.: 5.783 min  
 Delta R.T.: 0.005 min  
 Response: 28115560  
 Conc: 430.47 ng/ml



#6 AR-1016-4

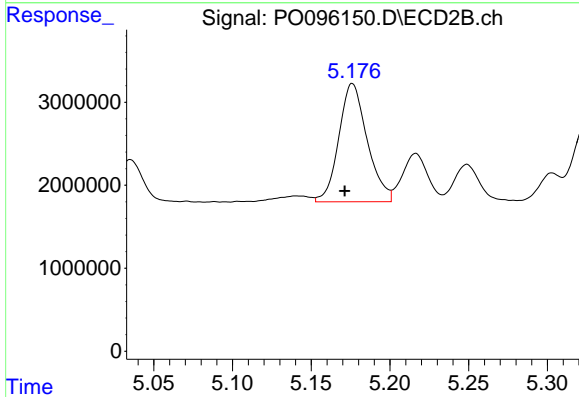
R.T.: 4.962 min  
 Delta R.T.: 0.005 min  
 Response: 14060231  
 Conc: 477.94 ng/ml



#7 AR-1016-5

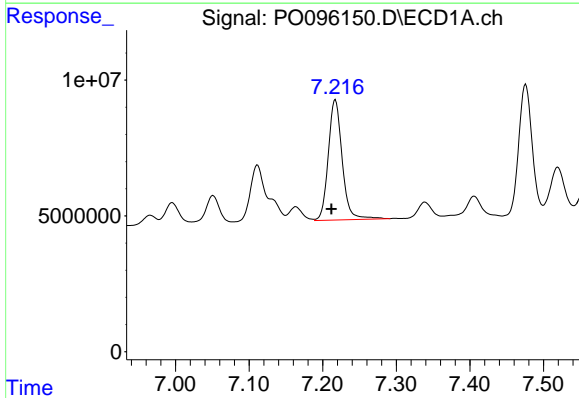
R.T.: 6.082 min  
 Delta R.T.: 0.005 min  
 Response: 29501690  
 Conc: 454.47 ng/ml

Instrument :  
 ECD\_O  
 ClientSampleId :  
 AR1660CCC500



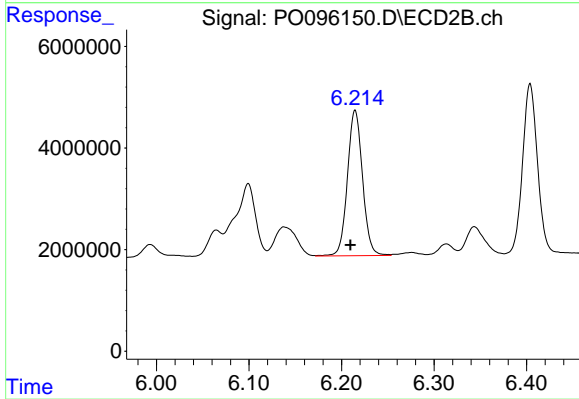
#7 AR-1016-5

R.T.: 5.176 min  
 Delta R.T.: 0.005 min  
 Response: 17903132  
 Conc: 487.97 ng/ml



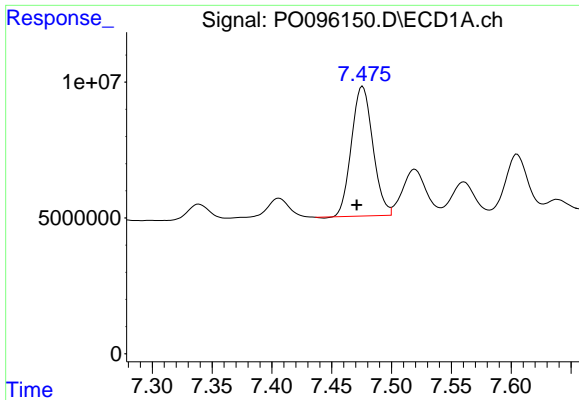
#31 AR-1260-1

R.T.: 7.217 min  
 Delta R.T.: 0.005 min  
 Response: 58362789  
 Conc: 489.05 ng/ml



#31 AR-1260-1

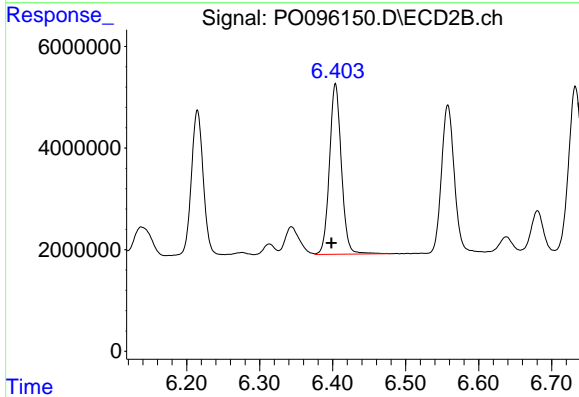
R.T.: 6.215 min  
 Delta R.T.: 0.005 min  
 Response: 32523179  
 Conc: 455.95 ng/ml



#32 AR-1260-2

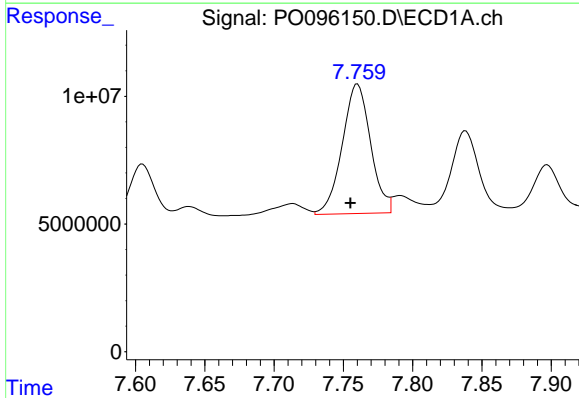
R.T.: 7.476 min  
 Delta R.T.: 0.005 min  
 Response: 59270090  
 Conc: 457.55 ng/ml

Instrument :  
 ECD\_O  
 ClientSampleId :  
 AR1660CCC500



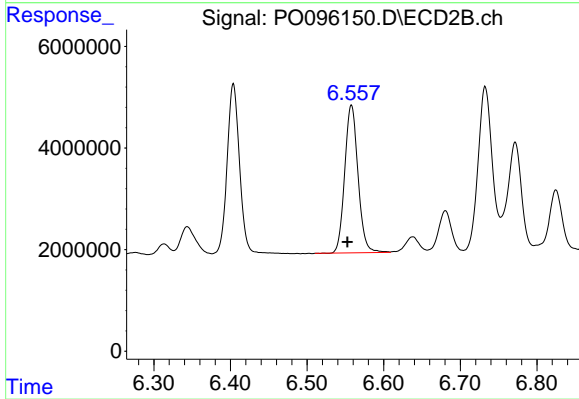
#32 AR-1260-2

R.T.: 6.404 min  
 Delta R.T.: 0.006 min  
 Response: 38086768  
 Conc: 452.49 ng/ml



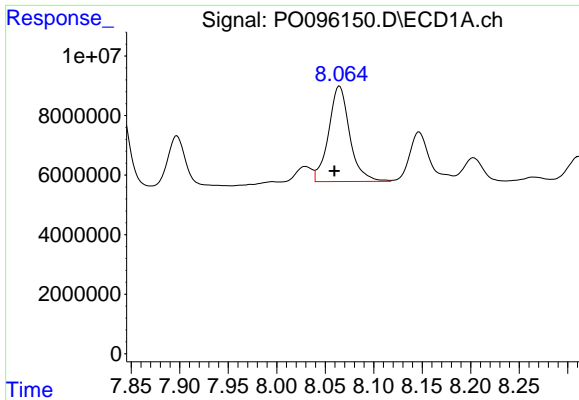
#33 AR-1260-3

R.T.: 7.760 min  
 Delta R.T.: 0.005 min  
 Response: 72160277  
 Conc: 497.15 ng/ml



#33 AR-1260-3

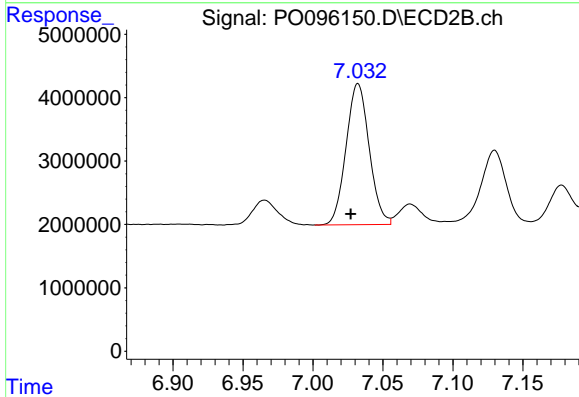
R.T.: 6.558 min  
 Delta R.T.: 0.005 min  
 Response: 35322665  
 Conc: 435.73 ng/ml



#34 AR-1260-4

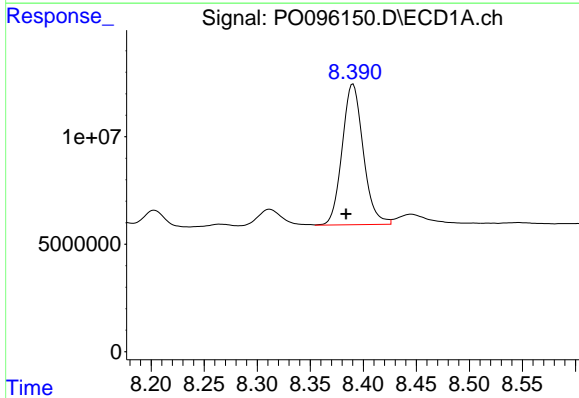
R.T.: 8.065 min  
 Delta R.T.: 0.005 min  
 Response: 48550420  
 Conc: 497.11 ng/ml

Instrument :  
 ECD\_O  
 ClientSampleId :  
 AR1660CCC500



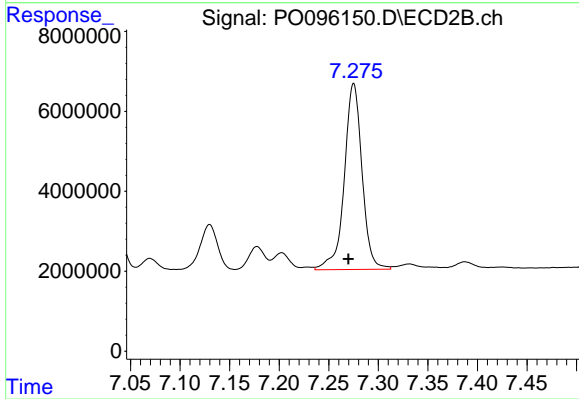
#34 AR-1260-4

R.T.: 7.032 min  
 Delta R.T.: 0.005 min  
 Response: 25585555  
 Conc: 448.04 ng/ml



#35 AR-1260-5

R.T.: 8.390 min  
 Delta R.T.: 0.006 min  
 Response: 90363258  
 Conc: 524.77 ng/ml



#35 AR-1260-5

R.T.: 7.275 min  
 Delta R.T.: 0.006 min  
 Response: 57990045  
 Conc: 450.31 ng/ml