

Data Path : Z:\pestpcbsrv\HPCHEM1\ECD\_0\Data\P0070324\  
 Data File : P0104673.D  
 Signal(s) : Signal #1: ECD1A.ch Signal #2: ECD2B.ch  
 Acq On : 03 Jul 2024 23:39  
 Operator : YP/AJ  
 Sample : AR1248CCC500  
 Misc :  
 ALS Vial : 5 Sample Multiplier: 1

**Instrument :**  
 ECD\_0  
**ClientSampleId :**  
 AR1248CCC500

**Manual Integrations**  
**APPROVED**

Reviewed By :Yogesh Patel 07/05/2024  
 Supervised By :Ankita Jodhani 07/08/2024

Integration File signal 1: autoint1.e  
 Integration File signal 2: autoint2.e  
 Quant Time: Jul 04 01:12:00 2024  
 Quant Method : Z:\pestpcbsrv\HPCHEM1\ECD\_0\methods\P0070224.M  
 Quant Title : GC EXTRACTABLES  
 QLast Update : Tue Jul 02 16:29:20 2024  
 Response via : Initial Calibration  
 Integrator: ChemStation

Volume Inj. : 2 µl  
 Signal #1 Phase : ZB-MR1 Signal #2 Phase: ZB-MR2  
 Signal #1 Info : 30Mx0.32mmx 0.50µ Signal #2 Info : 30M x 0.32mm x 0.25µm

Compound	RT#1	RT#2	Resp#1	Resp#2	ng/ml	ng/ml
-----						
System Monitoring Compounds						
1) SA Tetrachlo...	4.425	3.542	504.4E6	193.0E6	56.339	59.152
2) SA Decachlor...	10.208	8.441	316.7E6	112.5E6	51.637	53.656
Target Compounds						
21) L5 AR-1248-1	5.593	4.599	102.4E6	40652296	561.400	585.950
22) L5 AR-1248-2	5.868	4.831	144.9E6	54193360	560.898	573.746
23) L5 AR-1248-3	6.073	4.871	156.6E6	57457630	570.090	582.615
24) L5 AR-1248-4	6.479	5.040	172.6E6	68560019	566.767	599.690
25) L5 AR-1248-5	6.518	5.424	167.4E6	64539690	568.913	578.005m
-----						

(f)=RT Delta > 1/2 Window (#)=Amounts differ by > 25% (m)=manual int.

Data Path : Z:\pestpcbsrv\HPCHEM1\ECD\_O\Data\PO070324\  
 Data File : PO104673.D  
 Signal(s) : Signal #1: ECD1A.ch Signal #2: ECD2B.ch  
 Acq On : 03 Jul 2024 23:39  
 Operator : YP/AJ  
 Sample : AR1248CCC500  
 Misc :  
 ALS Vial : 5 Sample Multiplier: 1

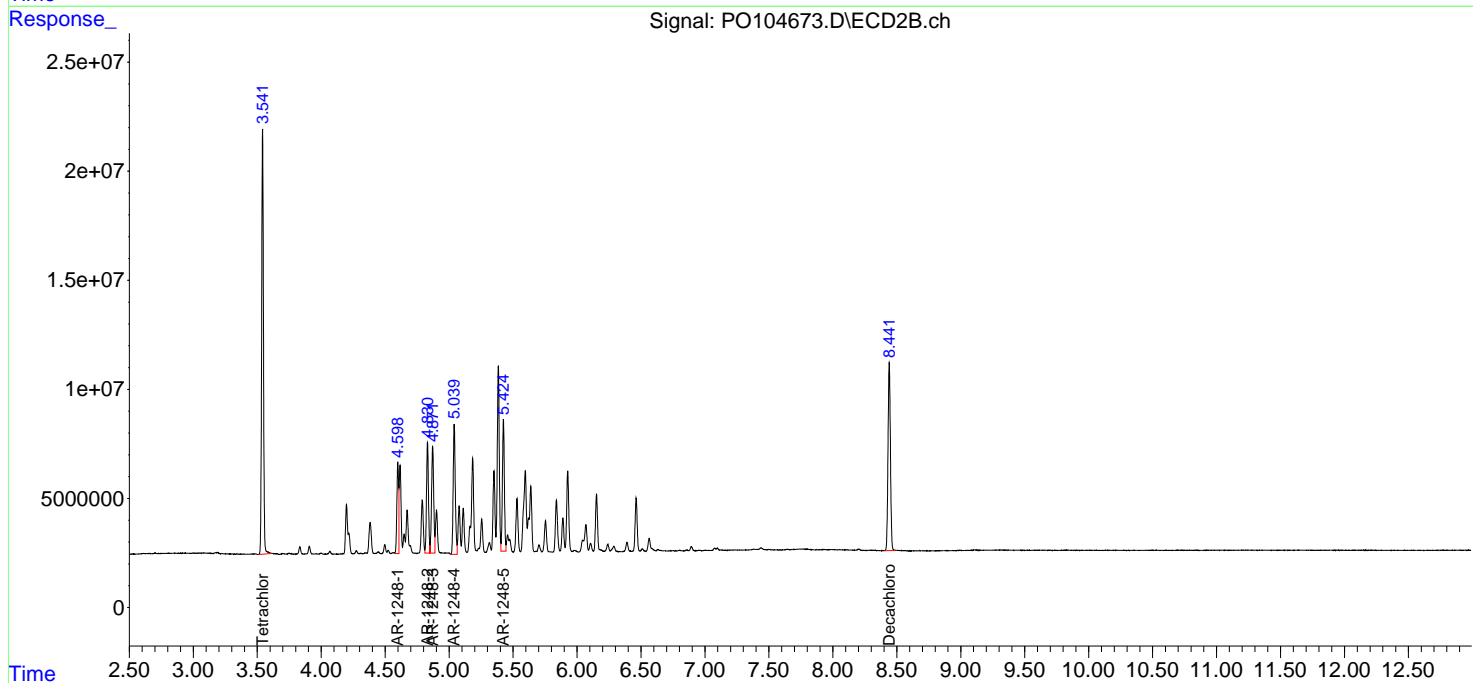
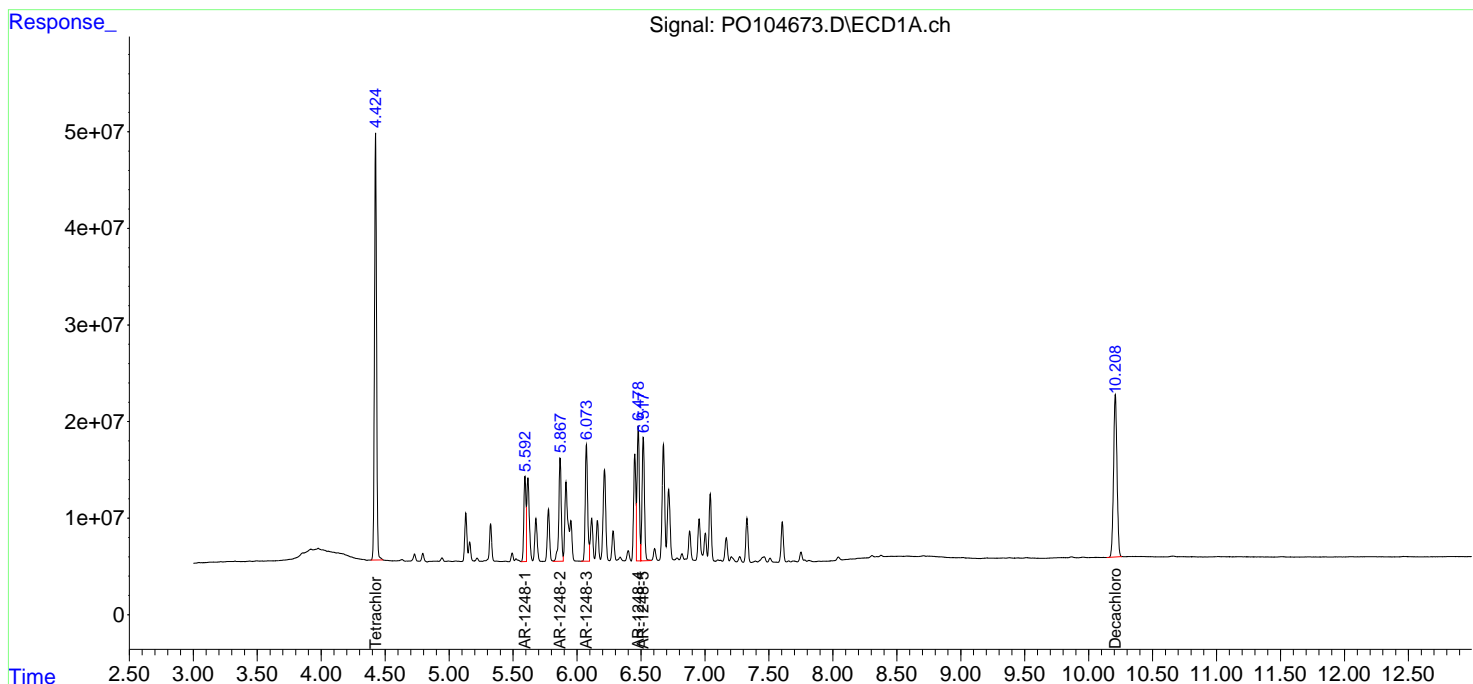
**Instrument :**  
 ECD\_O  
**ClientSampleId :**  
 AR1248CCC500

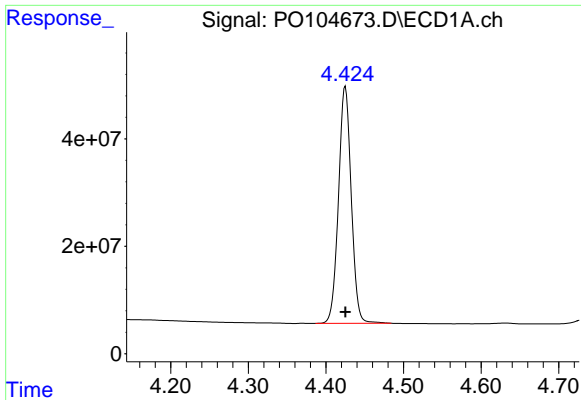
**Manual Integrations**  
**APPROVED**

Reviewed By :Yogesh Patel 07/05/2024  
 Supervised By :Ankita Jodhani 07/08/2024

Integration File signal 1: autoint1.e  
 Integration File signal 2: autoint2.e  
 Quant Time: Jul 04 01:12:00 2024  
 Quant Method : Z:\pestpcbsrv\HPCHEM1\ECD\_O\methods\PO070224.M  
 Quant Title : GC EXTRACTABLES  
 QLast Update : Tue Jul 02 16:29:20 2024  
 Response via : Initial Calibration  
 Integrator: ChemStation

Volume Inj. : 2 µl  
 Signal #1 Phase : ZB-MR1 Signal #2 Phase: ZB-MR2  
 Signal #1 Info : 30Mx0.32mmx 0.50µ Signal #2 Info : 30M x 0.32mm x 0.25µm



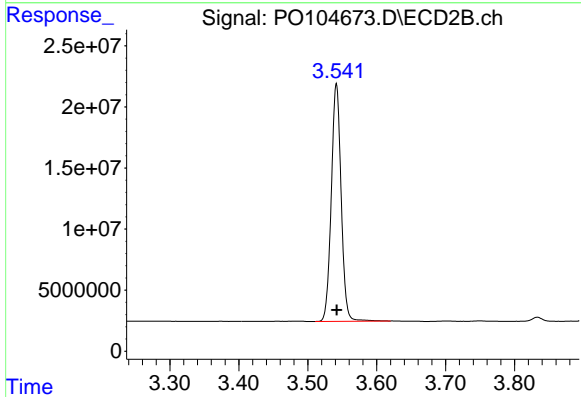


#1 Tetrachloro-m-xylene  
 R.T.: 4.425 min  
 Delta R.T.: 0.000 min  
 Response: 504430457  
 Conc: 56.34 ng/ml

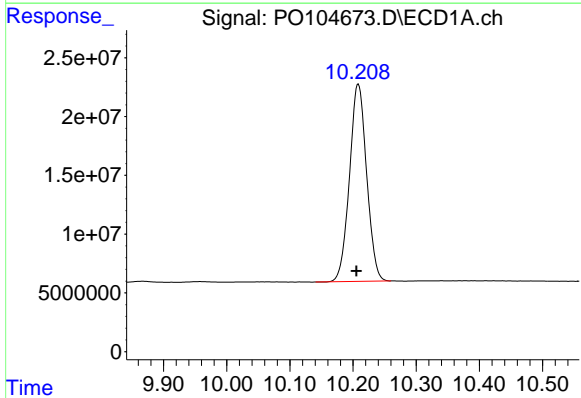
Instrument :  
 ECD\_O  
 ClientSampleId :  
 AR1248CCC500

Manual Integrations  
 APPROVED

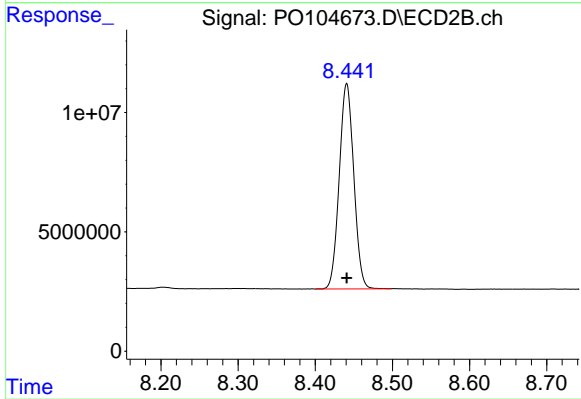
Reviewed By :Yogesh Patel 07/05/2024  
 Supervised By :Ankita Jodhani 07/08/2024



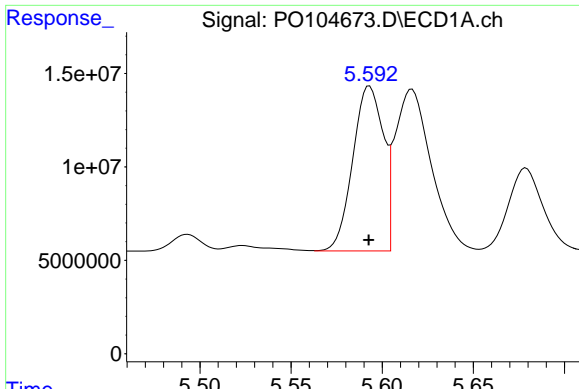
#1 Tetrachloro-m-xylene  
 R.T.: 3.542 min  
 Delta R.T.: 0.000 min  
 Response: 192989094  
 Conc: 59.15 ng/ml



#2 Decachlorobiphenyl  
 R.T.: 10.208 min  
 Delta R.T.: 0.003 min  
 Response: 316666671  
 Conc: 51.64 ng/ml



#2 Decachlorobiphenyl  
 R.T.: 8.441 min  
 Delta R.T.: 0.000 min  
 Response: 112522545  
 Conc: 53.66 ng/ml



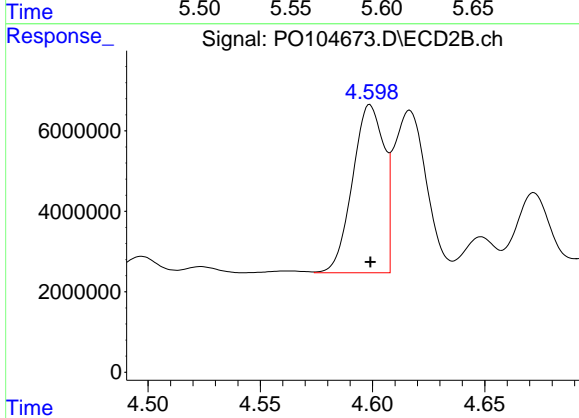
#21 AR-1248-1

R.T.: 5.593 min  
 Delta R.T.: 0.000 min  
 Response: 102422187  
 Conc: 561.40 ng/ml

Instrument :  
 ECD\_O  
 ClientSampleId :  
 AR1248CCC500

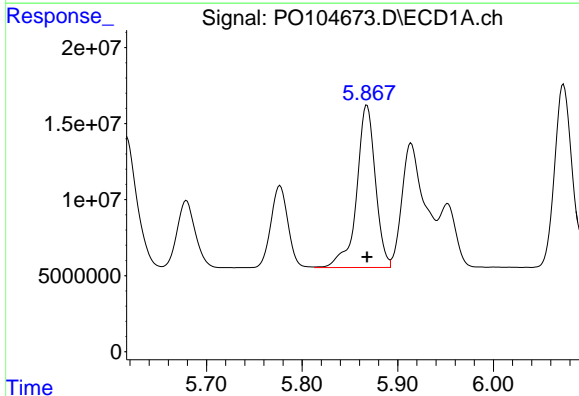
Manual Integrations  
 APPROVED

Reviewed By :Yogesh Patel 07/05/2024  
 Supervised By :Ankita Jodhani 07/08/2024



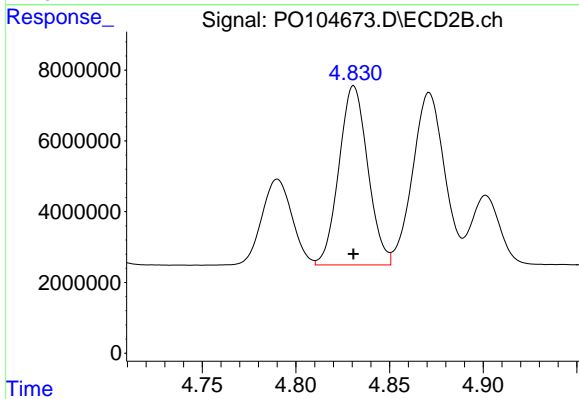
#21 AR-1248-1

R.T.: 4.599 min  
 Delta R.T.: 0.000 min  
 Response: 40652296  
 Conc: 585.95 ng/ml



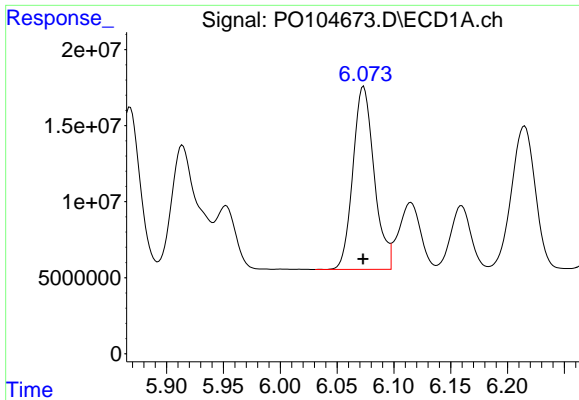
#22 AR-1248-2

R.T.: 5.868 min  
 Delta R.T.: 0.000 min  
 Response: 144862970  
 Conc: 560.90 ng/ml



#22 AR-1248-2

R.T.: 4.831 min  
 Delta R.T.: 0.000 min  
 Response: 54193360  
 Conc: 573.75 ng/ml



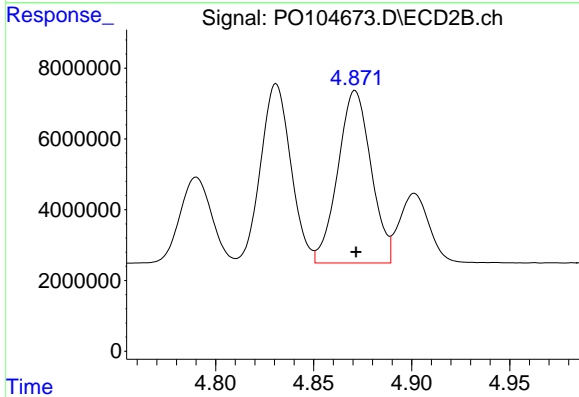
#23 AR-1248-3

R.T.: 6.073 min  
 Delta R.T.: 0.000 min  
 Response: 156557951  
 Conc: 570.09 ng/ml

Instrument :  
 ECD\_O  
 ClientSampleId :  
 AR1248CCC500

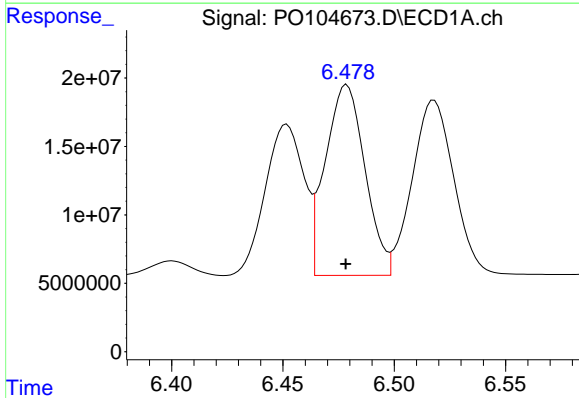
Manual Integrations  
 APPROVED

Reviewed By :Yogesh Patel 07/05/2024  
 Supervised By :Ankita Jodhani 07/08/2024



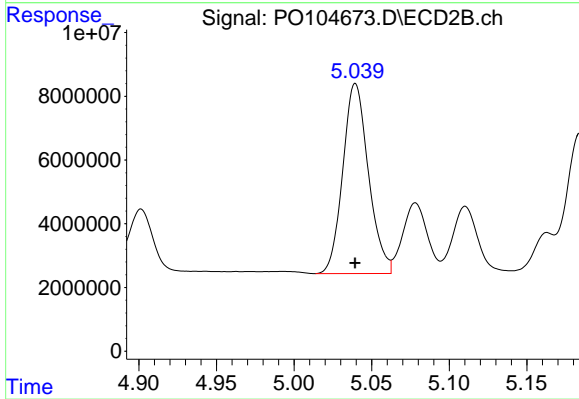
#23 AR-1248-3

R.T.: 4.871 min  
 Delta R.T.: 0.000 min  
 Response: 57457630  
 Conc: 582.61 ng/ml



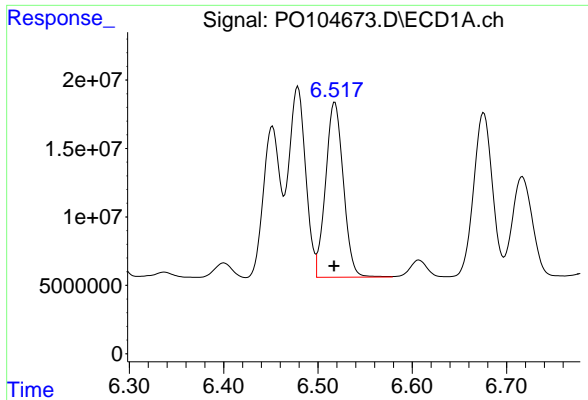
#24 AR-1248-4

R.T.: 6.479 min  
 Delta R.T.: 0.000 min  
 Response: 172552830  
 Conc: 566.77 ng/ml



#24 AR-1248-4

R.T.: 5.040 min  
 Delta R.T.: 0.000 min  
 Response: 68560019  
 Conc: 599.69 ng/ml



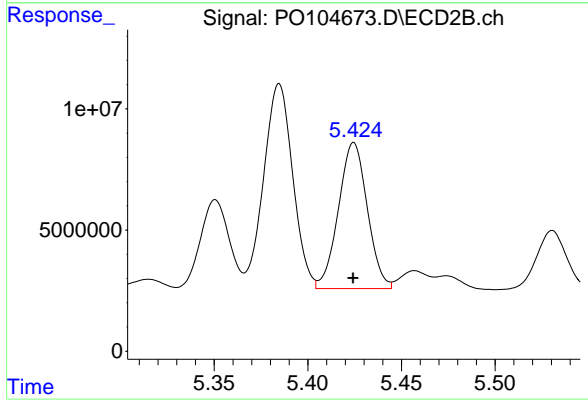
#25 AR-1248-5

R.T.: 6.518 min  
Delta R.T.: 0.000 min  
Response: 167371463  
Conc: 568.91 ng/ml

Instrument :  
ECD\_O  
ClientSampleId :  
AR1248CCC500

Manual Integrations  
APPROVED

Reviewed By :Yogesh Patel 07/05/2024  
Supervised By :Ankita Jodhani 07/08/2024



#25 AR-1248-5

R.T.: 5.424 min  
Delta R.T.: 0.000 min  
Response: 64539690  
Conc: 578.01 ng/ml m