

Data Path : Z:\pestpcbsrv\HPCHEM1\ECD_0\Data\P0070620\
 Data File : P0069414.D
 Signal(s) : Signal #1: ECD1A.CH Signal #2: ECD2B.CH
 Acq On : 06 Jul 2020 21:03
 Operator : DD\AJ
 Sample : L3225-01 5X
 Misc :
 ALS Vial : 22 Sample Multiplier: 1

Instrument :
 ECD_0
 ClientSampleId :
 PCB-062220-SR-06

Integration File signal 1: autoint1.e
 Integration File signal 2: autoint2.e
 Quant Time: Jul 07 07:10:26 2020
 Quant Method : Z:\pestpcbsrv\HPCHEM1\ECD_0\methods\P0061820.M
 Quant Title : GC EXTRACTABLES
 QLast Update : Mon Jun 29 12:05:30 2020
 Response via : Initial Calibration
 Integrator: ChemStation 6890 Scale Mode: Small noise peaks clipped

Volume Inj. : 2 µl
 Signal #1 Phase : ZB-MR1 Signal #2 Phase: ZB-MR2
 Signal #1 Info : 30Mx0.32mmx 0.50µ Signal #2 Info : 30M x 0.32mm x 0.25µm

Compound	RT#1	RT#2	Resp#1	Resp#2	ng/ml	ng/ml

System Monitoring Compounds						
1) SA Tetrachlo...	4.397	3.565	172762	189561	5.840	4.925
2) SA Decachlor...	10.058	8.773	272752	521065	5.743	9.572 #

Target Compounds

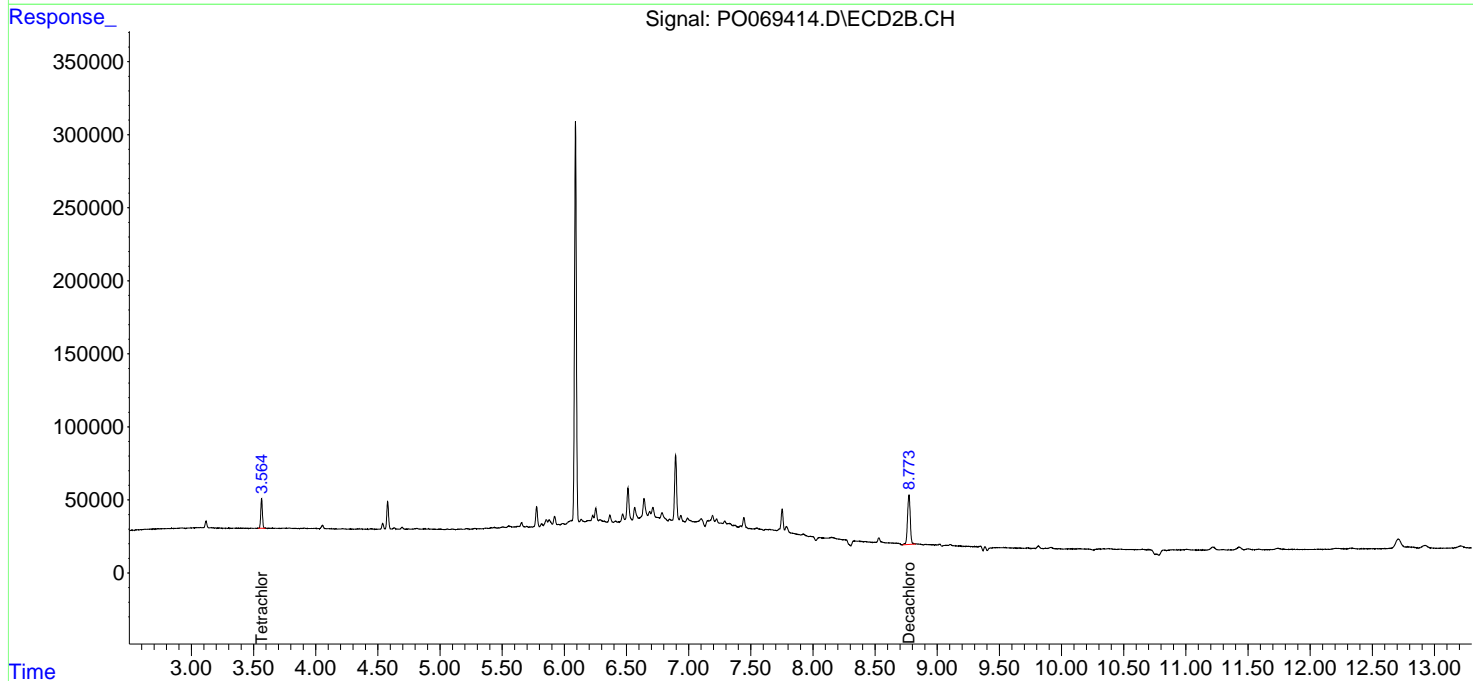
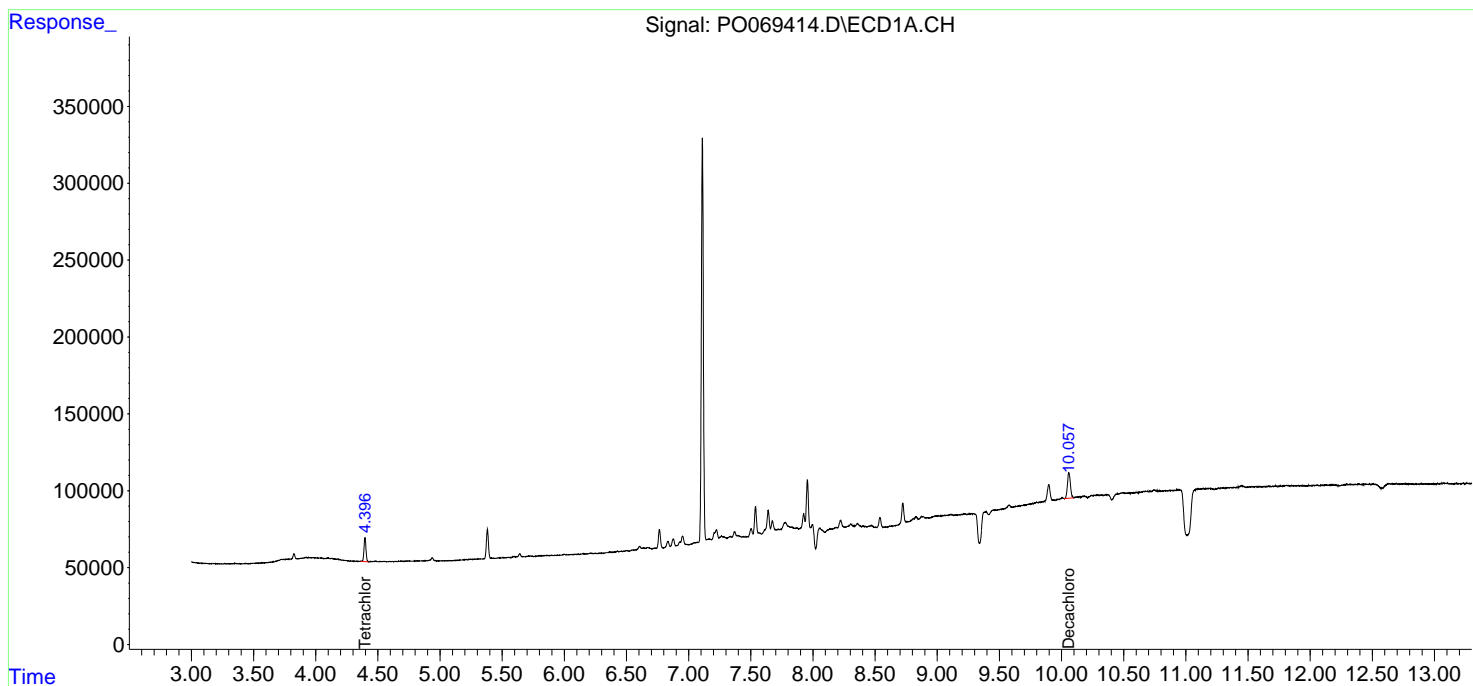
(f)=RT Delta > 1/2 Window (#)=Amounts differ by > 25% (m)=manual int.

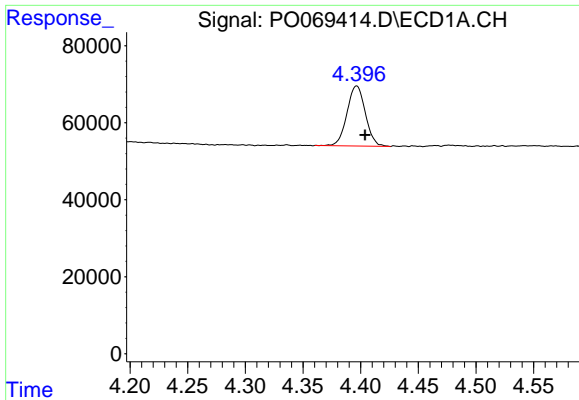
Data Path : Z:\pestpcbsrv\HPCHEM1\ECD_0\Data\P0070620\
 Data File : P0069414.D
 Signal(s) : Signal #1: ECD1A.CH Signal #2: ECD2B.CH
 Acq On : 06 Jul 2020 21:03
 Operator : DD\AJ
 Sample : L3225-01 5X
 Misc :
 ALS Vial : 22 Sample Multiplier: 1

Instrument :
 ECD_O
 ClientSampleId :
 PCB-062220-SR-06

Integration File signal 1: autoint1.e
 Integration File signal 2: autoint2.e
 Quant Time: Jul 07 07:10:26 2020
 Quant Method : Z:\pestpcbsrv\HPCHEM1\ECD_0\methods\P0061820.M
 Quant Title : GC EXTRACTABLES
 QLast Update : Mon Jun 29 12:05:30 2020
 Response via : Initial Calibration
 Integrator: ChemStation 6890 Scale Mode: Small noise peaks clipped

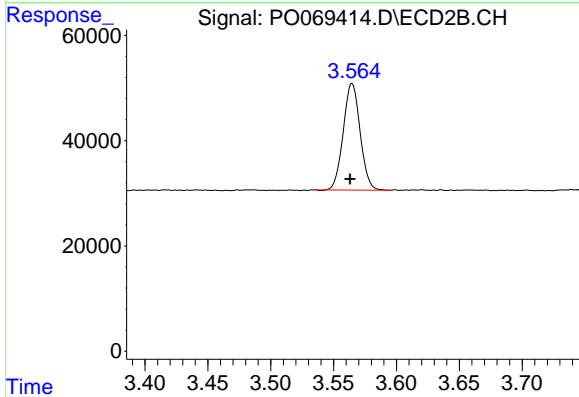
Volume Inj. : 2 µl
 Signal #1 Phase : ZB-MR1 Signal #2 Phase: ZB-MR2
 Signal #1 Info : 30Mx0.32mmx 0.50µ Signal #2 Info : 30M x 0.32mm x 0.25µm



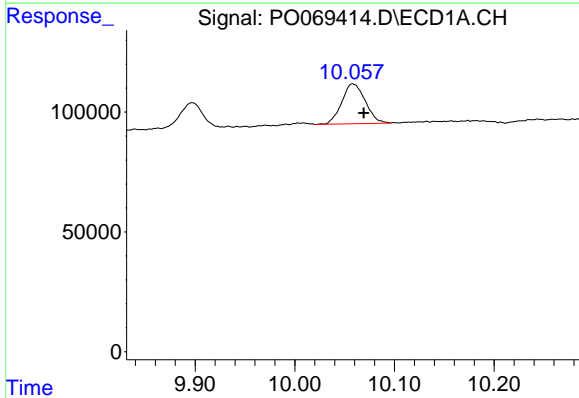


#1 Tetrachloro-m-xylene
 R.T.: 4.397 min
 Delta R.T.: -0.007 min
 Response: 172762
 Conc: 5.84 ng/ml

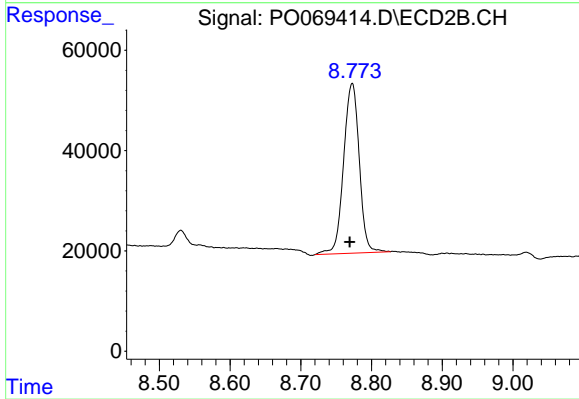
Instrument :
 ECD_O
 ClientSampleId :
 PCB-062220-SR-06



#1 Tetrachloro-m-xylene
 R.T.: 3.565 min
 Delta R.T.: 0.002 min
 Response: 189561
 Conc: 4.93 ng/ml



#2 Decachlorobiphenyl
 R.T.: 10.058 min
 Delta R.T.: -0.011 min
 Response: 272752
 Conc: 5.74 ng/ml



#2 Decachlorobiphenyl
 R.T.: 8.773 min
 Delta R.T.: 0.003 min
 Response: 521065
 Conc: 9.57 ng/ml