

Data Path : Z:\pestpcbsrv\HPCHEM1\ECD_0\Data\P0070622\
 Data File : P0087783.D
 Signal(s) : Signal #1: ECD1A.ch Signal #2: ECD2B.ch
 Acq On : 07 Jul 2022 03:31
 Operator : YP/AJ
 Sample : AR1242CCC500
 Misc :
 ALS Vial : 4 Sample Multiplier: 1

Instrument :
 ECD_0
 ClientSampleId :
 AR1242CCC500

Integration File signal 1: autoint1.e
 Integration File signal 2: autoint2.e
 Quant Time: Jul 07 05:52:38 2022
 Quant Method : Z:\pestpcbsrv\HPCHEM1\ECD_0\methods\P0062722.M
 Quant Title : GC EXTRACTABLES
 QLast Update : Tue Jun 28 02:46:21 2022
 Response via : Initial Calibration
 Integrator: ChemStation

Volume Inj. : 2 µl
 Signal #1 Phase : ZB-MR1 Signal #2 Phase: ZB-MR2
 Signal #1 Info : 30Mx0.32mmx 0.50µ Signal #2 Info : 30M x 0.32mm x 0.25µm

Compound	RT#1	RT#2	Resp#1	Resp#2	ng/ml	ng/ml

System Monitoring Compounds						
1) SA Tetrachlo...	4.448	3.607	137.4E6	55060543	53.068	55.956
2) SA Decachlor...	10.297	8.611	110.3E6	37689745	54.015	46.492
Target Compounds						
16) L4 AR-1242-1	5.624	4.687	35447636	15954974	488.844	559.033
17) L4 AR-1242-2	5.647	4.706	49041557	21883519	480.314	560.979
18) L4 AR-1242-3	5.709	4.881	31411039	11987569	489.088	575.110
19) L4 AR-1242-4	5.809	4.965	25253710	12085342	496.062	572.037
20) L4 AR-1242-5	6.550	5.488	29447335	15541095	554.634	594.535

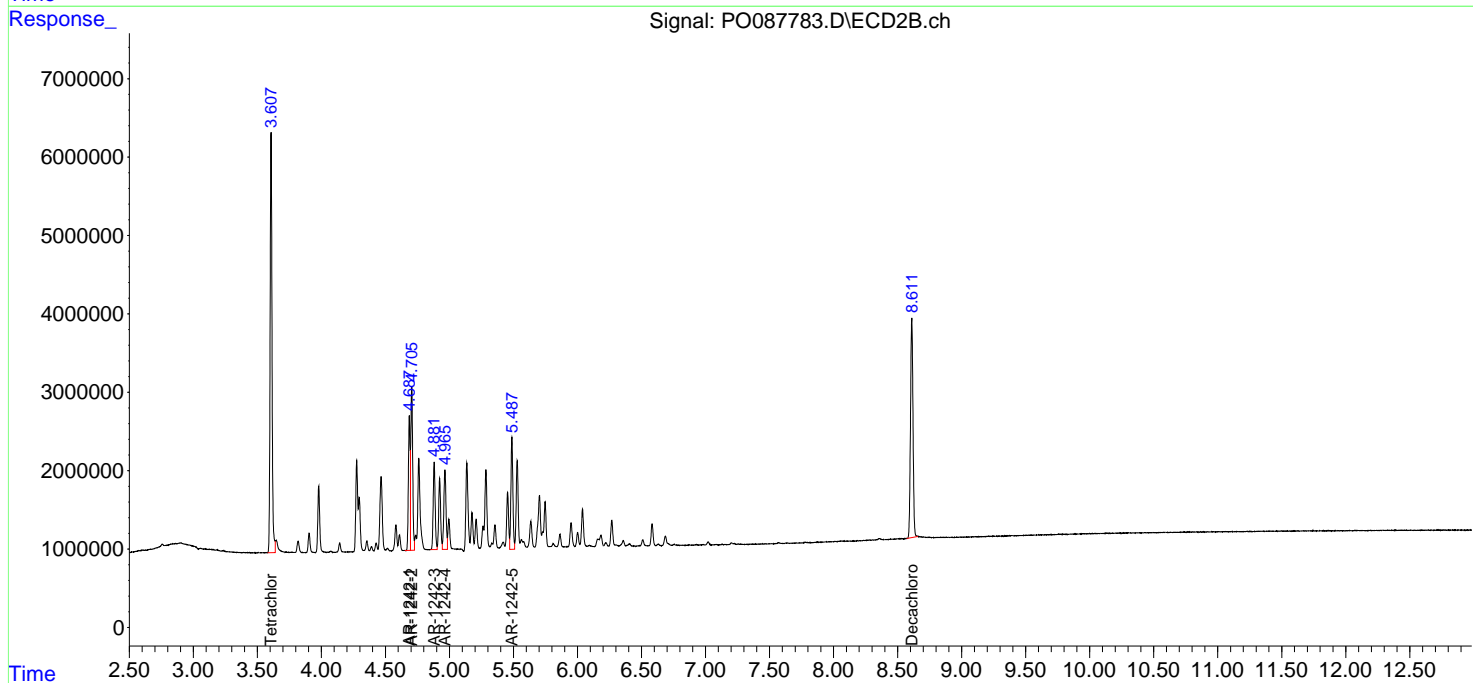
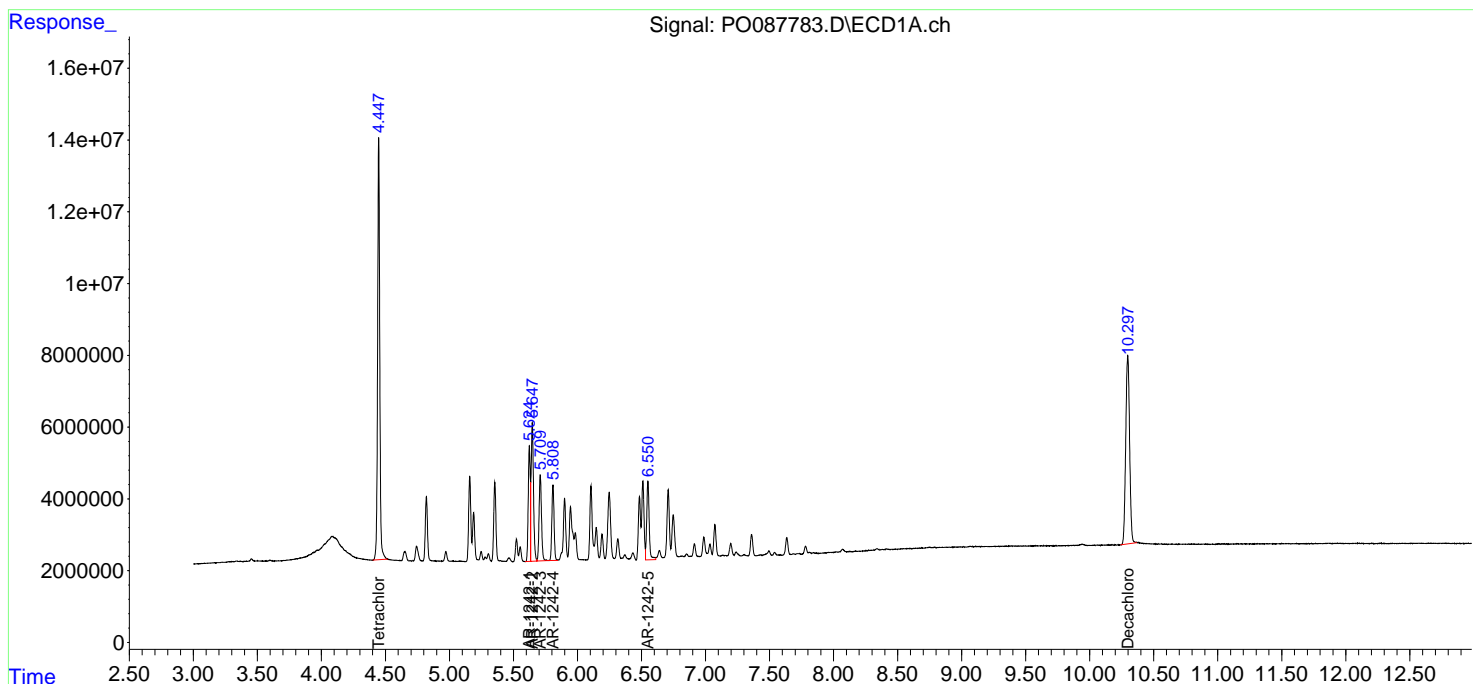
(f)=RT Delta > 1/2 Window (#)=Amounts differ by > 25% (m)=manual int.

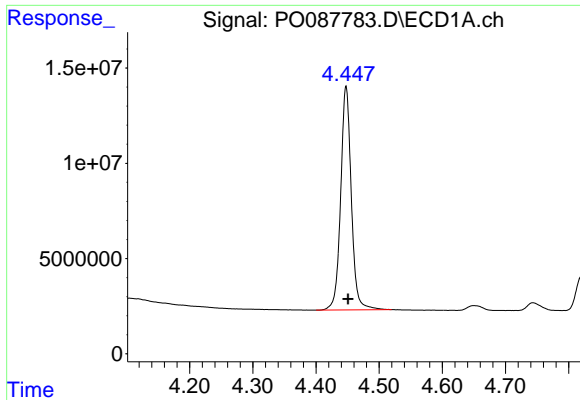
Data Path : Z:\pestpcbsrv\HPCHEM1\ECD_O\Data\P0070622\
 Data File : P0087783.D
 Signal(s) : Signal #1: ECD1A.ch Signal #2: ECD2B.ch
 Acq On : 07 Jul 2022 03:31
 Operator : YP/AJ
 Sample : AR1242CCC500
 Misc :
 ALS Vial : 4 Sample Multiplier: 1

Instrument :
 ECD_O
 ClientSampleId :
 AR1242CCC500

Integration File signal 1: autoint1.e
 Integration File signal 2: autoint2.e
 Quant Time: Jul 07 05:52:38 2022
 Quant Method : Z:\pestpcbsrv\HPCHEM1\ECD_O\methods\P0062722.M
 Quant Title : GC EXTRACTABLES
 QLast Update : Tue Jun 28 02:46:21 2022
 Response via : Initial Calibration
 Integrator: ChemStation

Volume Inj. : 2 µl
 Signal #1 Phase : ZB-MR1 Signal #2 Phase: ZB-MR2
 Signal #1 Info : 30Mx0.32mmx 0.50µ Signal #2 Info : 30M x 0.32mm x 0.25µm

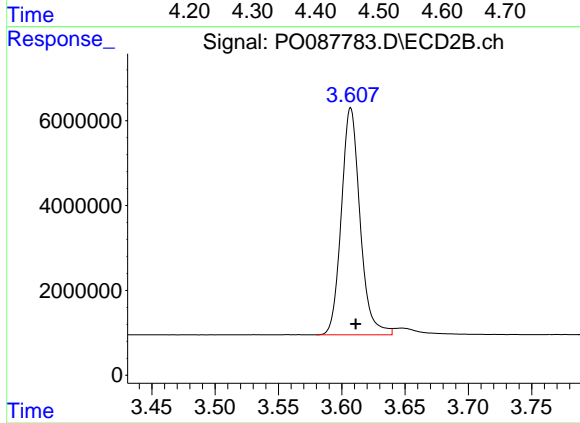




#1 Tetrachloro-m-xylene

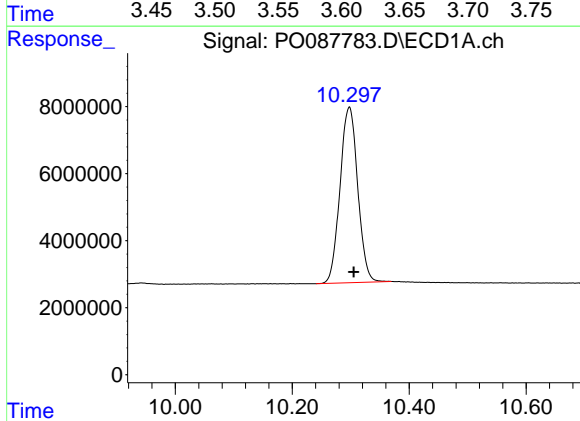
R.T.: 4.448 min
Delta R.T.: -0.003 min
Response: 137358789
Conc: 53.07 ng/ml

Instrument :
ECD_O
ClientSampleId :
AR1242CCC500



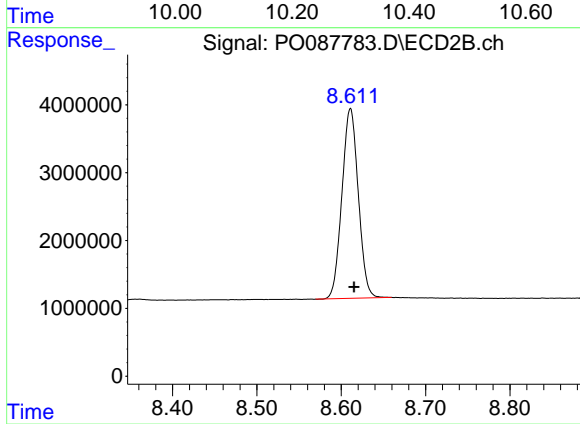
#1 Tetrachloro-m-xylene

R.T.: 3.607 min
Delta R.T.: -0.004 min
Response: 55060543
Conc: 55.96 ng/ml



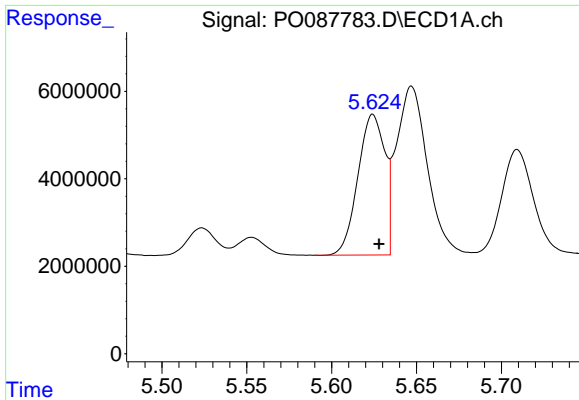
#2 Decachlorobiphenyl

R.T.: 10.297 min
Delta R.T.: -0.008 min
Response: 110334306
Conc: 54.01 ng/ml



#2 Decachlorobiphenyl

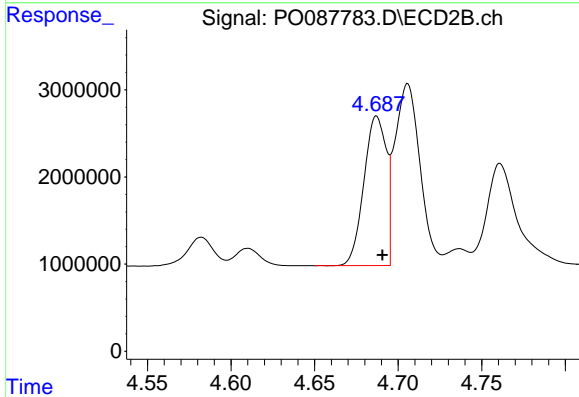
R.T.: 8.611 min
Delta R.T.: -0.004 min
Response: 37689745
Conc: 46.49 ng/ml



#16 AR-1242-1

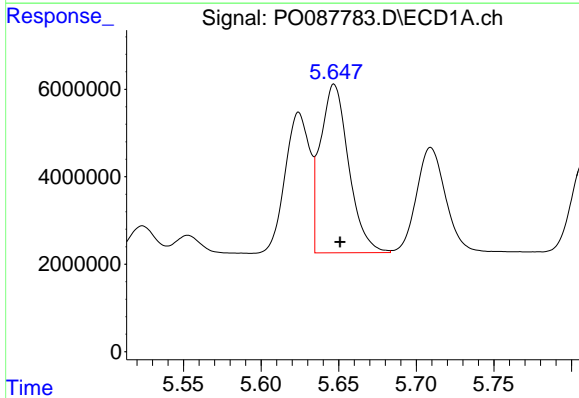
R.T.: 5.624 min
 Delta R.T.: -0.004 min
 Response: 35447636
 Conc: 488.84 ng/ml

Instrument :
 ECD_O
 ClientSampleId :
 AR1242CCC500



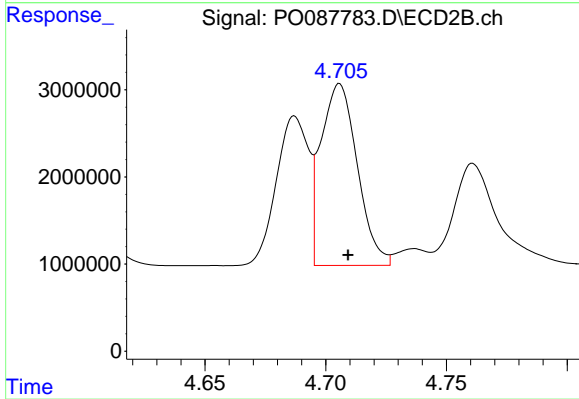
#16 AR-1242-1

R.T.: 4.687 min
 Delta R.T.: -0.003 min
 Response: 15954974
 Conc: 559.03 ng/ml



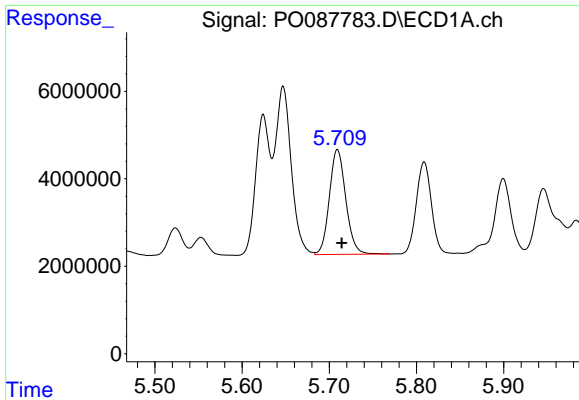
#17 AR-1242-2

R.T.: 5.647 min
 Delta R.T.: -0.004 min
 Response: 49041557
 Conc: 480.31 ng/ml



#17 AR-1242-2

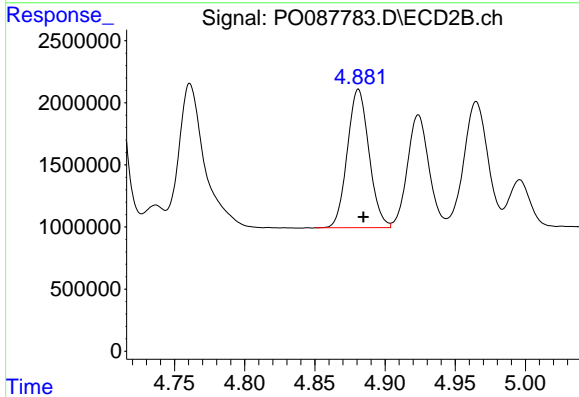
R.T.: 4.706 min
 Delta R.T.: -0.004 min
 Response: 21883519
 Conc: 560.98 ng/ml



#18 AR-1242-3

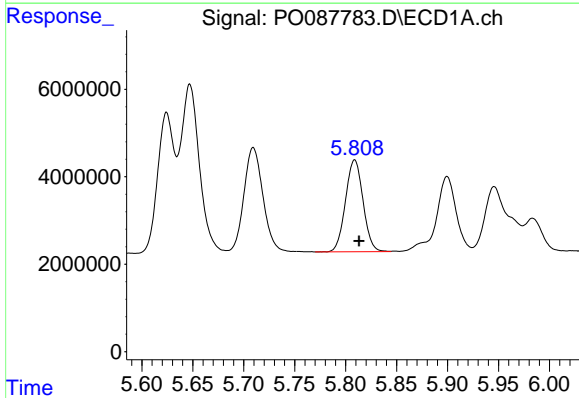
R.T.: 5.709 min
 Delta R.T.: -0.005 min
 Response: 31411039
 Conc: 489.09 ng/ml

Instrument :
 ECD_O
 ClientSampleId :
 AR1242CCC500



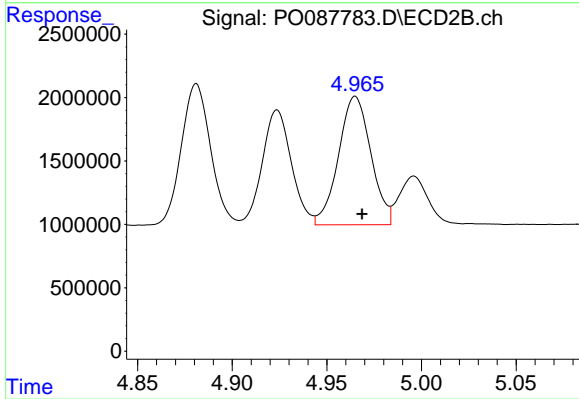
#18 AR-1242-3

R.T.: 4.881 min
 Delta R.T.: -0.003 min
 Response: 11987569
 Conc: 575.11 ng/ml



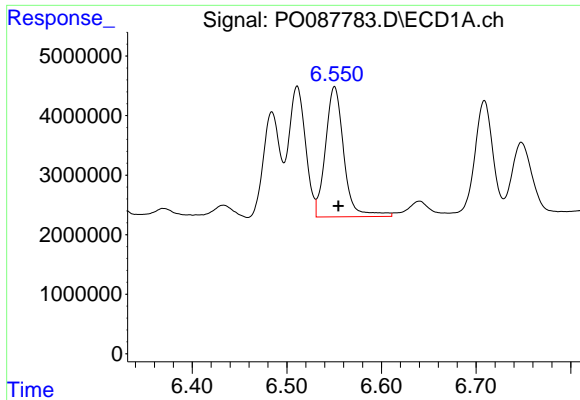
#19 AR-1242-4

R.T.: 5.809 min
 Delta R.T.: -0.004 min
 Response: 25253710
 Conc: 496.06 ng/ml



#19 AR-1242-4

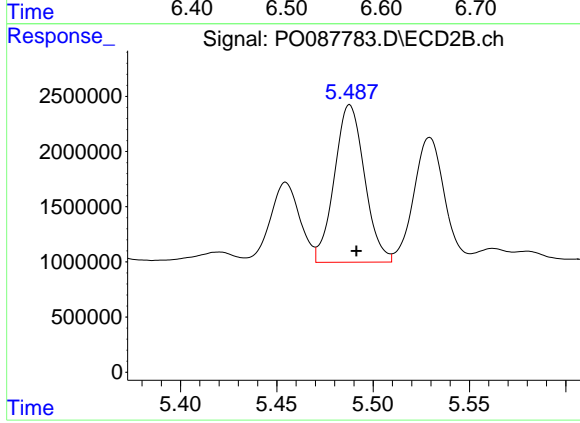
R.T.: 4.965 min
 Delta R.T.: -0.004 min
 Response: 12085342
 Conc: 572.04 ng/ml



#20 AR-1242-5

R.T.: 6.550 min
Delta R.T.: -0.004 min
Response: 29447335
Conc: 554.63 ng/ml

Instrument :
ECD_O
ClientSampleId :
AR1242CCC500



#20 AR-1242-5

R.T.: 5.488 min
Delta R.T.: -0.003 min
Response: 15541095
Conc: 594.53 ng/ml