

Data Path : Z:\pestpcbsrv\HPCHEM1\ECD_0\Data\P0070820\
 Data File : P0069446.D
 Signal(s) : Signal #1: ECD1A.CH Signal #2: ECD2B.CH
 Acq On : 08 Jul 2020 13:39
 Operator : DD\AJ
 Sample : AR1660CCC500
 Misc :
 ALS Vial : 3 Sample Multiplier: 1

Instrument :
 ECD_0
 ClientSampled :

Integration File signal 1: autoint1.e
 Integration File signal 2: autoint2.e
 Quant Time: Jul 08 17:24:03 2020
 Quant Method : Z:\pestpcbsrv\HPCHEM1\ECD_0\methods\P0070820.M
 Quant Title : GC EXTRACTABLES
 QLast Update : Wed Jul 08 16:12:41 2020
 Response via : Initial Calibration
 Integrator: ChemStation 6890 Scale Mode: Small noise peaks clipped

Volume Inj. : 2 µl
 Signal #1 Phase : ZB-MR1 Signal #2 Phase: ZB-MR2
 Signal #1 Info : 30Mx0.32mmx 0.50µ Signal #2 Info : 30M x 0.32mm x 0.25µm

Compound	RT#1	RT#2	Resp#1	Resp#2	ng/ml	ng/ml
System Monitoring Compounds						
1) SA Tetrachlo...	4.392	3.562	1844619	1949702	49.406	48.992
2) SA Decachlor...	10.054	8.773	2910168	2674138	48.369	47.118
Target Compounds						
3) L1 AR-1016-1	5.701	4.795	876997	821113	489.548	488.286
4) L1 AR-1016-2	5.723	4.814	1261220	1145826	497.498	492.759
5) L1 AR-1016-3	5.786	5.000	757517	625660	493.911	491.150
6) L1 AR-1016-4	5.892	5.056	644543	553741	497.356	507.075
7) L1 AR-1016-5	6.203	5.278	634972	666929	481.916	484.845
8) L2 AR-1221-1	4.643	3.815	62949	72185	156.982	151.016
9) L2 AR-1221-2	4.743	3.912	88283	104051	287.967	290.788
10) L2 AR-1221-3	4.830	3.998	352227	395875	346.632	361.981
11) L3 AR-1232-1	4.830	3.998	352227	395875	433.025	442.772
12) L3 AR-1232-2	5.407	4.814	541406	1145826	1263.210	1185.275
13) L3 AR-1232-3	5.723	5.000	1261220	625660	1261.686	1197.493
14) L3 AR-1232-4	5.892	5.099	644543	582500	1317.318	1328.592
15) L3 AR-1232-5	5.992	5.278	501572	666929	1580.487	1274.861
16) L4 AR-1242-1	5.701	4.795	876997	821113	672.862	654.861
17) L4 AR-1242-2	5.723	4.814	1261220	1145826	669.763	655.830
18) L4 AR-1242-3	5.786	5.000	757517	625660	667.054	649.920
19) L4 AR-1242-4	5.892	5.099	644543	582500	671.683	643.878
20) L4 AR-1242-5	6.668	5.653	105650	549836	88.996	433.812 #
21) L5 AR-1248-1	5.701	4.795	876997	821113	898.044	839.027
22) L5 AR-1248-2	5.992	5.056	501572	553741	393.937	406.750
23) L5 AR-1248-3	6.203	5.099	634972	582500	401.761	461.227
24) L5 AR-1248-4	6.630	5.278	133147	666929	65.619	410.582 #
25) L5 AR-1248-5	6.668	5.696	105650	90428	55.047	54.799
26) L6 AR-1254-1	6.598	5.653	413187	549836	207.571	211.224
27) L6 AR-1254-2	6.825	5.815	526510	471097	164.009	204.064
28) L6 AR-1254-3	7.202	6.227	303717	284101	86.478	75.649
29) L6 AR-1254-4	7.497	6.467	200325	156541	66.934	61.944
30) L6 AR-1254-5	7.919	6.891	1934233	1815640	642.860	505.897
31) L7 AR-1260-1	7.366	6.364	1292320	1260388	491.486	477.859
32) L7 AR-1260-2	7.633	6.564	1718745	1558566	484.508	476.166
33) L7 AR-1260-3	7.992	6.713	1409758	1451772	487.639	476.829
34) L7 AR-1260-4	8.218	7.191	1436059	1292602	484.838	477.541
35) L7 AR-1260-5	8.534	7.443	3298113	3112649	487.426	485.697
36) L8 AR-1262-1	7.992	6.891	1409758	1815640	354.258	940.260 #
37) L8 AR-1262-2	8.534	7.443	3298113	3112649	456.921	476.724
38) L8 AR-1262-3	8.804	7.726	747147	819185	156.038	303.960 #
39) L8 AR-1262-4	8.869f	7.786	1305611	2383301	673.547	478.655 #
40) L8 AR-1262-5	9.446	8.286	972236	951308	372.773	382.837
41) L9 AR-1268-1	8.804	7.726	747147	819185	81.510	104.647 #

Data Path : Z:\pestpcbsrv\HPCHEM1\ECD_0\Data\P0070820\
 Data File : P0069446.D
 Signal(s) : Signal #1: ECD1A.CH Signal #2: ECD2B.CH
 Acq On : 08 Jul 2020 13:39
 Operator : DD\AJ
 Sample : AR1660CCC500
 Misc :
 ALS Vial : 3 Sample Multiplier: 1

Instrument :
 ECD_0
 ClientSampleId :

Integration File signal 1: autoint1.e
 Integration File signal 2: autoint2.e
 Quant Time: Jul 08 17:24:03 2020
 Quant Method : Z:\pestpcbsrv\HPCHEM1\ECD_0\methods\P0070820.M
 Quant Title : GC EXTRACTABLES
 QLast Update : Wed Jul 08 16:12:41 2020
 Response via : Initial Calibration
 Integrator: ChemStation 6890 Scale Mode: Small noise peaks clipped

Volume Inj. : 2 µl
 Signal #1 Phase : ZB-MR1 Signal #2 Phase: ZB-MR2
 Signal #1 Info : 30Mx0.32mmx 0.50µ Signal #2 Info : 30M x 0.32mm x 0.25µm

	Compound	RT#1	RT#2	Resp#1	Resp#2	ng/ml	ng/ml
42)	L9 AR-1268-2	8.869f	7.786	1305611	2383301	157.519	333.656 #
43)	L9 AR-1268-3	9.072	7.993	47430	55819	6.703	9.348 #
44)	L9 AR-1268-4	9.446	8.286	972236	951308	320.772	328.941
45)	L9 AR-1268-5	9.784	8.556	253481	289941	11.411	15.037 #

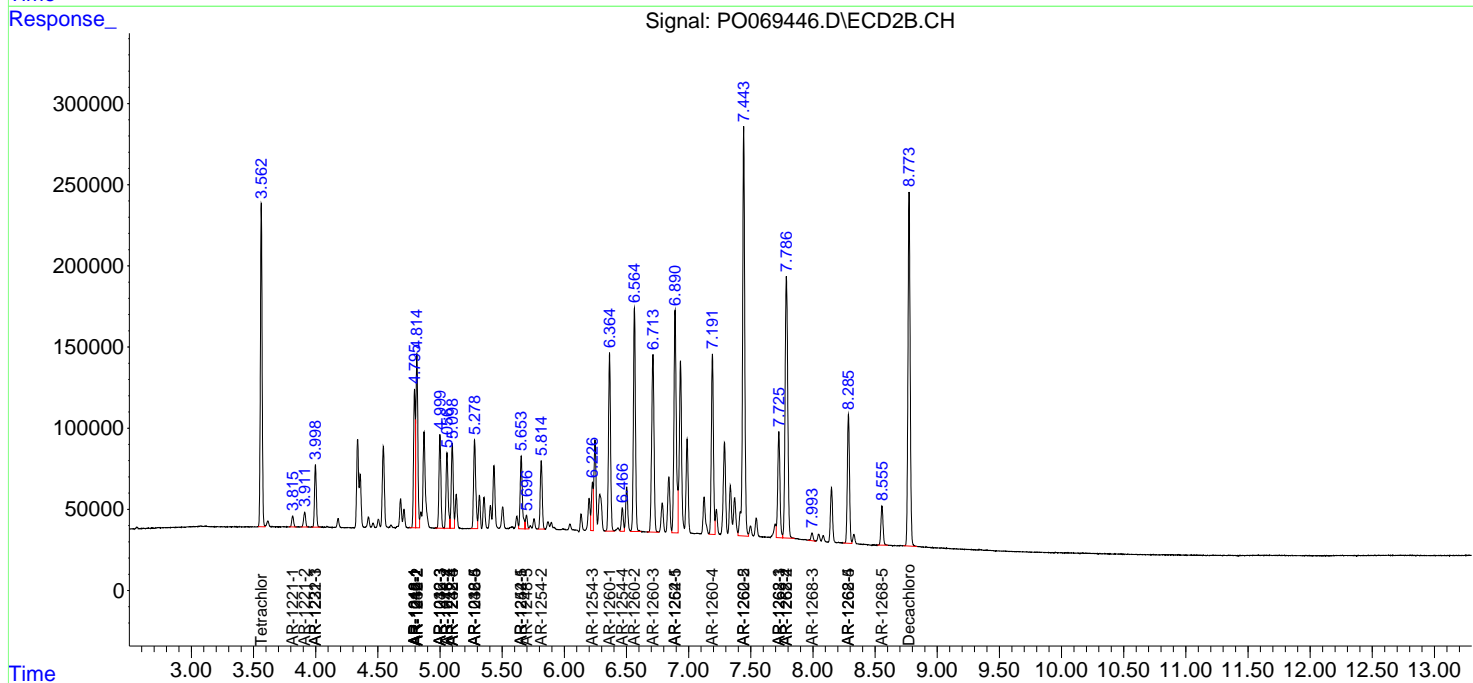
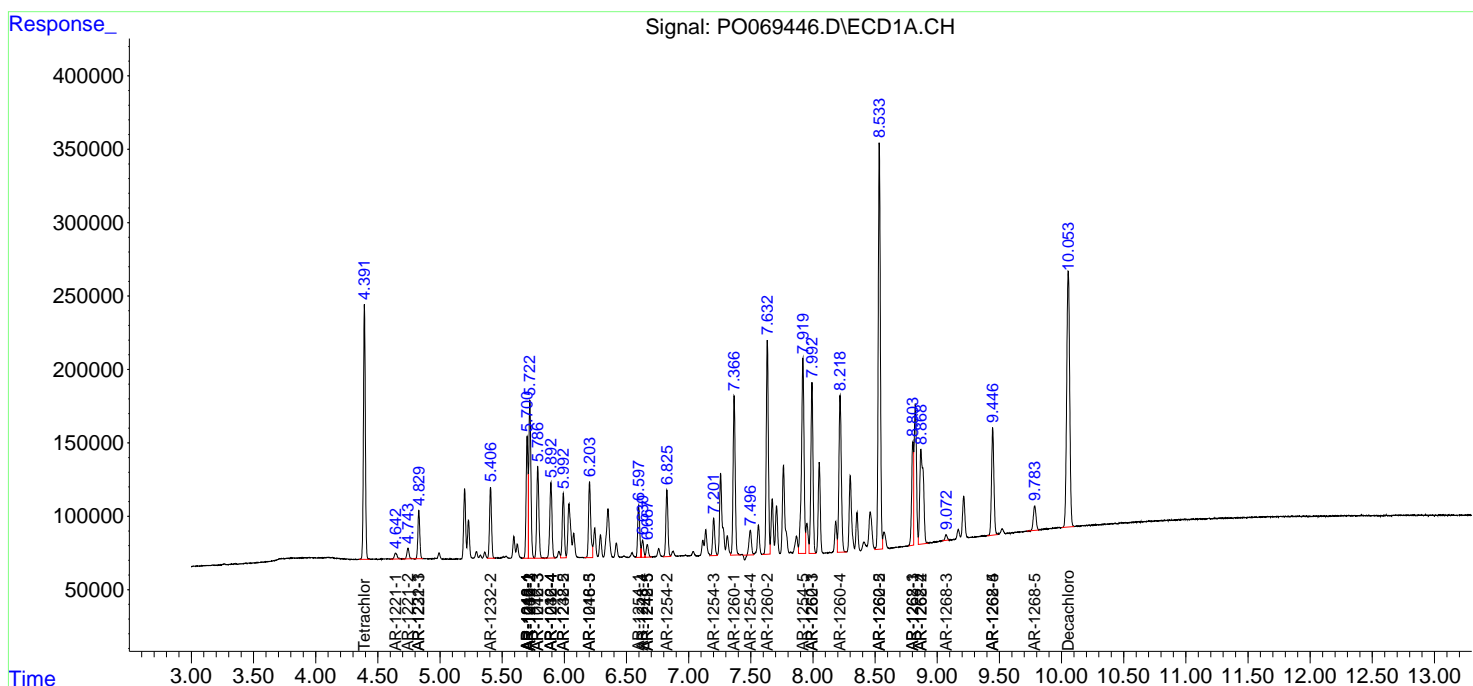
(f)=RT Delta > 1/2 Window (#)=Amounts differ by > 25% (m)=manual int.

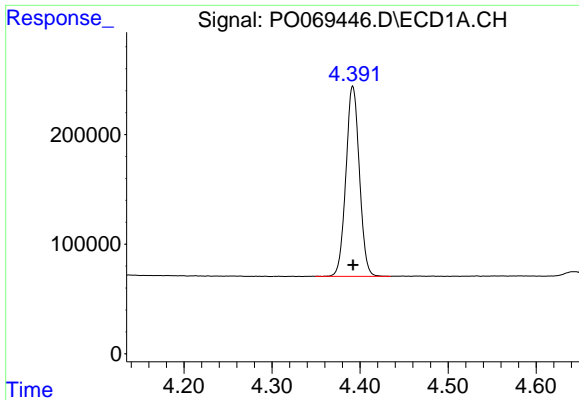
Data Path : Z:\pestpcbsrv\HPCHEM1\ECD_O\Data\P0070820\
 Data File : P0069446.D
 Signal(s) : Signal #1: ECD1A.CH Signal #2: ECD2B.CH
 Acq On : 08 Jul 2020 13:39
 Operator : DD\AJ
 Sample : AR1660CCC500
 Misc :
 ALS Vial : 3 Sample Multiplier: 1

Instrument :
 ECD_O
 ClientSampled :

Integration File signal 1: autoint1.e
 Integration File signal 2: autoint2.e
 Quant Time: Jul 08 17:24:03 2020
 Quant Method : Z:\pestpcbsrv\HPCHEM1\ECD_O\methods\P0070820.M
 Quant Title : GC EXTRACTABLES
 QLast Update : Wed Jul 08 16:12:41 2020
 Response via : Initial Calibration
 Integrator: ChemStation 6890 Scale Mode: Small noise peaks clipped

Volume Inj. : 2 µl
 Signal #1 Phase : ZB-MR1 Signal #2 Phase: ZB-MR2
 Signal #1 Info : 30Mx0.32mmx 0.50µ Signal #2 Info : 30M x 0.32mm x 0.25µm

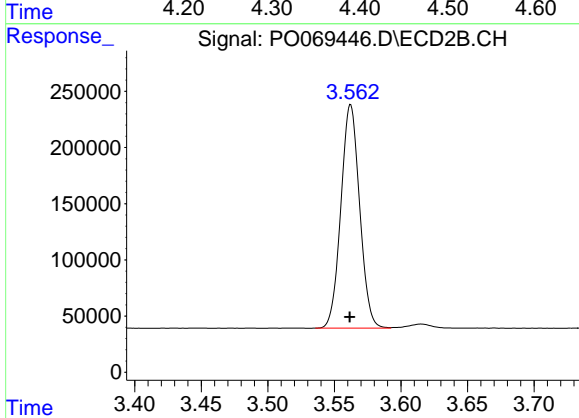




#1 Tetrachloro-m-xylene

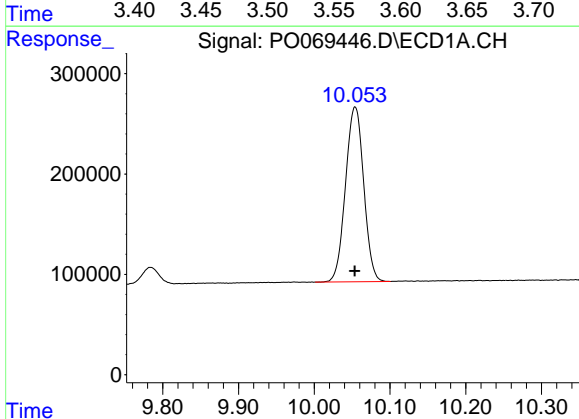
R.T.: 4.392 min
 Delta R.T.: 0.000 min
 Response: 1844619
 Conc: 49.41 ng/ml

Instrument :
 ECD_O
 ClientSampled :



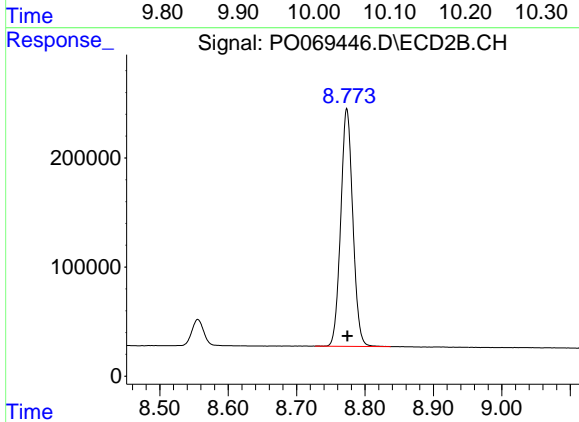
#1 Tetrachloro-m-xylene

R.T.: 3.562 min
 Delta R.T.: 0.000 min
 Response: 1949702
 Conc: 48.99 ng/ml



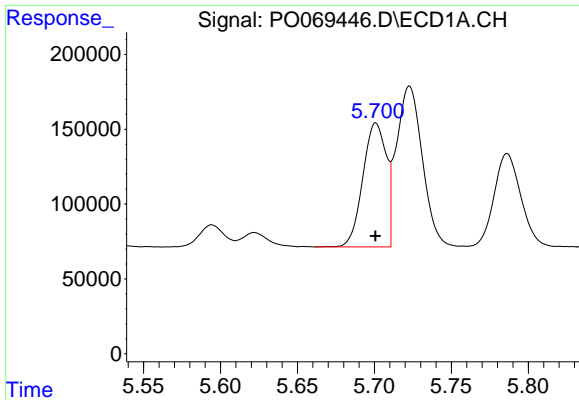
#2 Decachlorobiphenyl

R.T.: 10.054 min
 Delta R.T.: 0.000 min
 Response: 2910168
 Conc: 48.37 ng/ml



#2 Decachlorobiphenyl

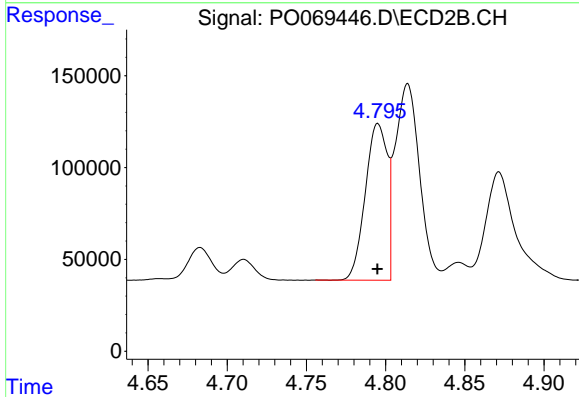
R.T.: 8.773 min
 Delta R.T.: 0.000 min
 Response: 2674138
 Conc: 47.12 ng/ml



#3 AR-1016-1

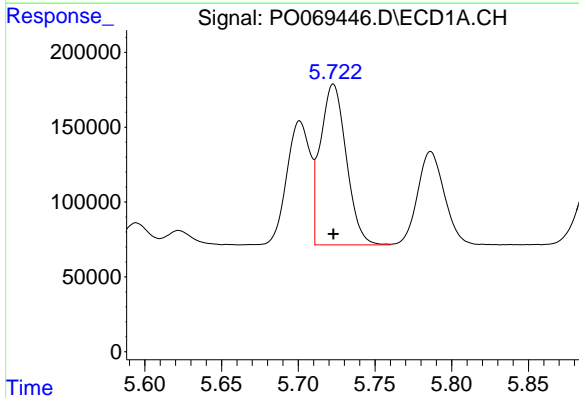
R.T.: 5.701 min
 Delta R.T.: 0.000 min
 Response: 876997
 Conc: 489.55 ng/ml

Instrument :
 ECD_O
 ClientSampled :



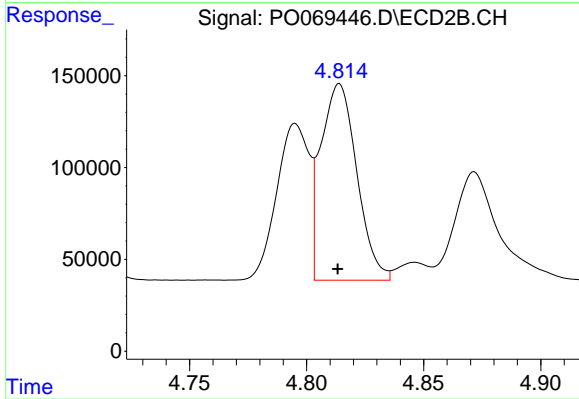
#3 AR-1016-1

R.T.: 4.795 min
 Delta R.T.: 0.000 min
 Response: 821113
 Conc: 488.29 ng/ml



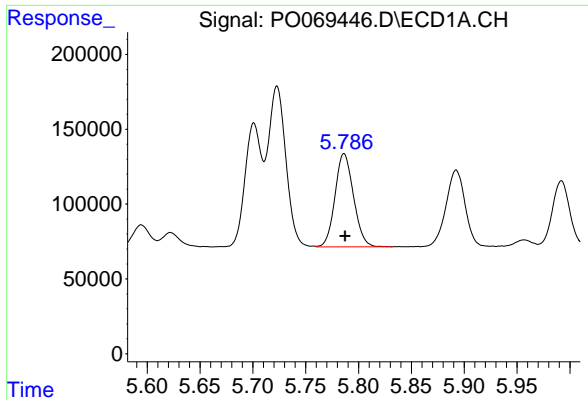
#4 AR-1016-2

R.T.: 5.723 min
 Delta R.T.: 0.000 min
 Response: 1261220
 Conc: 497.50 ng/ml



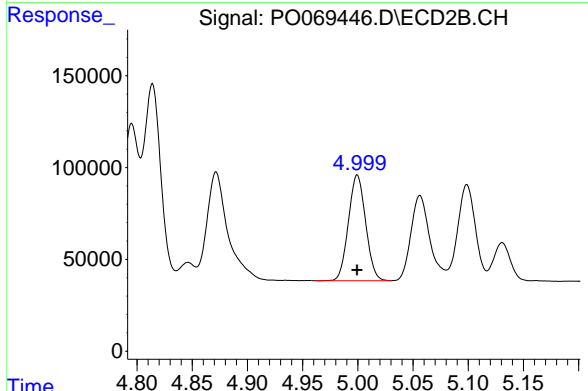
#4 AR-1016-2

R.T.: 4.814 min
 Delta R.T.: 0.000 min
 Response: 1145826
 Conc: 492.76 ng/ml

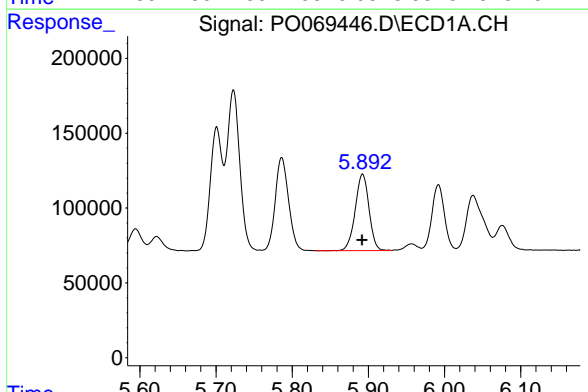


#5 AR-1016-3
 R.T.: 5.786 min
 Delta R.T.: 0.000 min
 Response: 757517
 Conc: 493.91 ng/ml

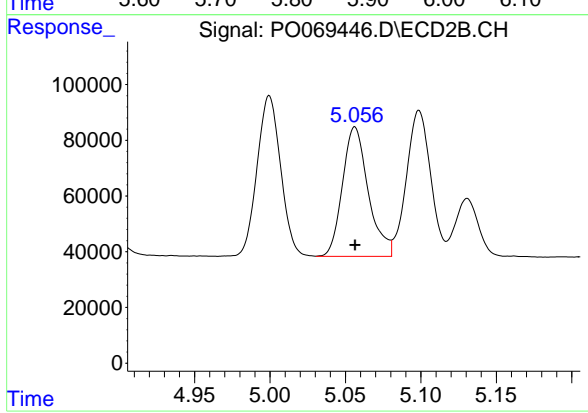
Instrument :
 ECD_O
 ClientSampled :



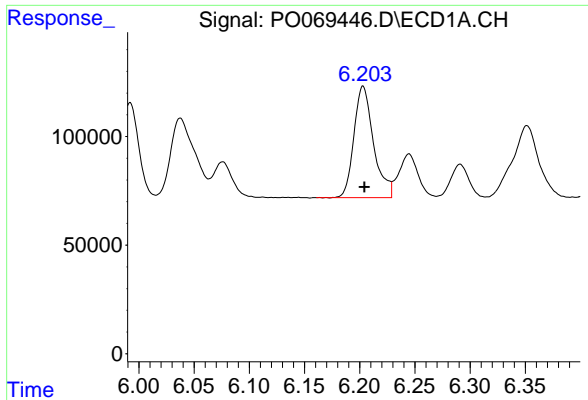
#5 AR-1016-3
 R.T.: 5.000 min
 Delta R.T.: 0.000 min
 Response: 625660
 Conc: 491.15 ng/ml



#6 AR-1016-4
 R.T.: 5.892 min
 Delta R.T.: 0.000 min
 Response: 644543
 Conc: 497.36 ng/ml

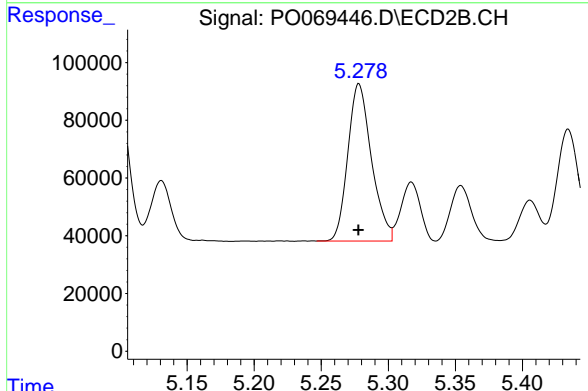


#6 AR-1016-4
 R.T.: 5.056 min
 Delta R.T.: 0.000 min
 Response: 553741
 Conc: 507.07 ng/ml

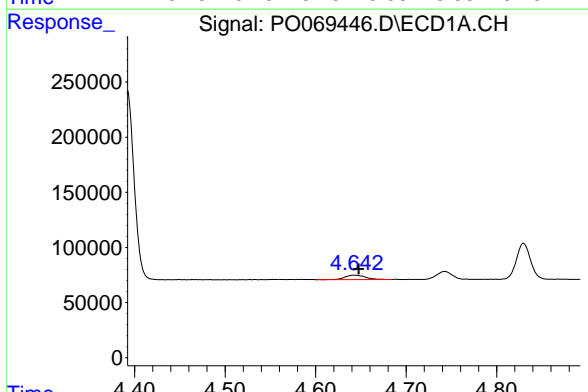


#7 AR-1016-5
 R.T.: 6.203 min
 Delta R.T.: -0.001 min
 Response: 634972
 Conc: 481.92 ng/ml

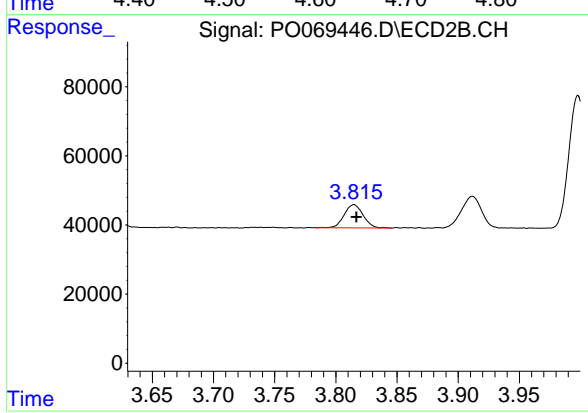
Instrument :
 ECD_O
 ClientSampled :



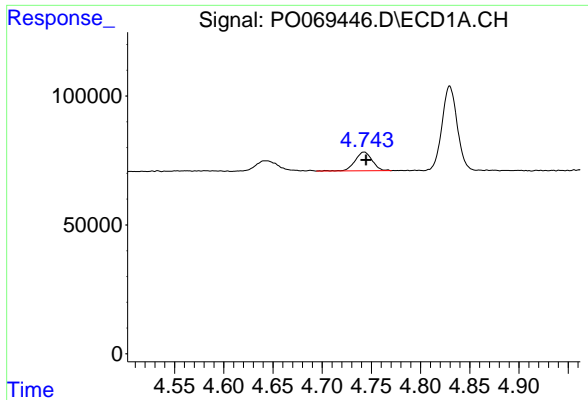
#7 AR-1016-5
 R.T.: 5.278 min
 Delta R.T.: 0.000 min
 Response: 666929
 Conc: 484.85 ng/ml



#8 AR-1221-1
 R.T.: 4.643 min
 Delta R.T.: -0.005 min
 Response: 62949
 Conc: 156.98 ng/ml

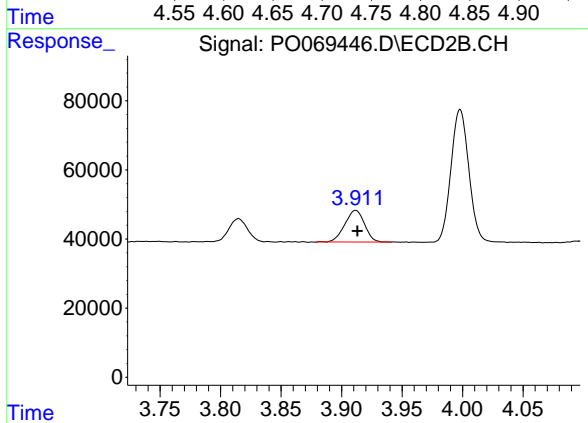


#8 AR-1221-1
 R.T.: 3.815 min
 Delta R.T.: -0.002 min
 Response: 72185
 Conc: 151.02 ng/ml

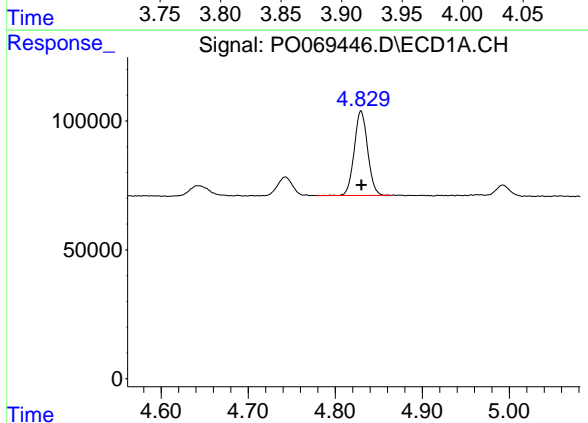


#9 AR-1221-2
 R.T.: 4.743 min
 Delta R.T.: -0.002 min
 Response: 88283
 Conc: 287.97 ng/ml

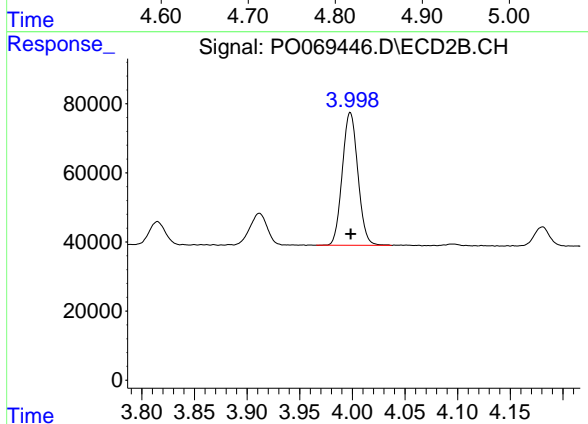
Instrument :
 ECD_O
 ClientSampled :



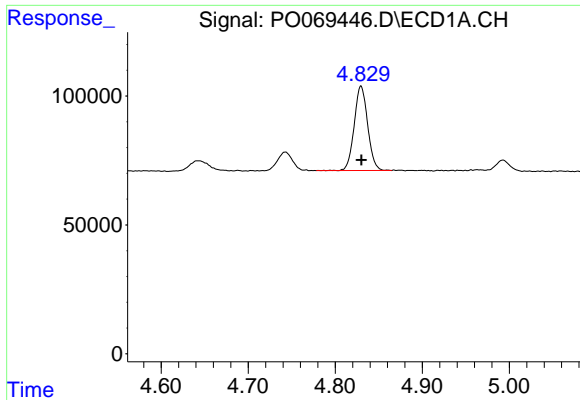
#9 AR-1221-2
 R.T.: 3.912 min
 Delta R.T.: -0.001 min
 Response: 104051
 Conc: 290.79 ng/ml



#10 AR-1221-3
 R.T.: 4.830 min
 Delta R.T.: 0.000 min
 Response: 352227
 Conc: 346.63 ng/ml

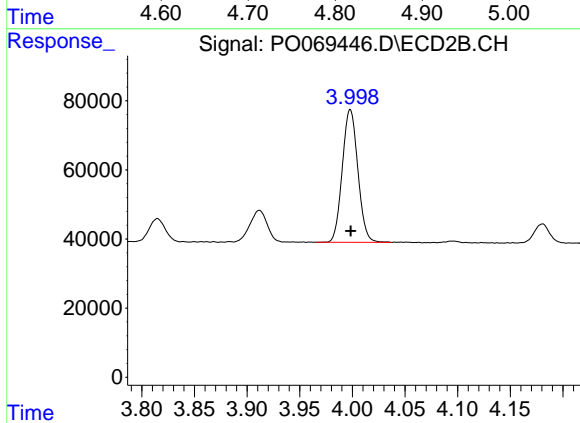


#10 AR-1221-3
 R.T.: 3.998 min
 Delta R.T.: 0.000 min
 Response: 395875
 Conc: 361.98 ng/ml

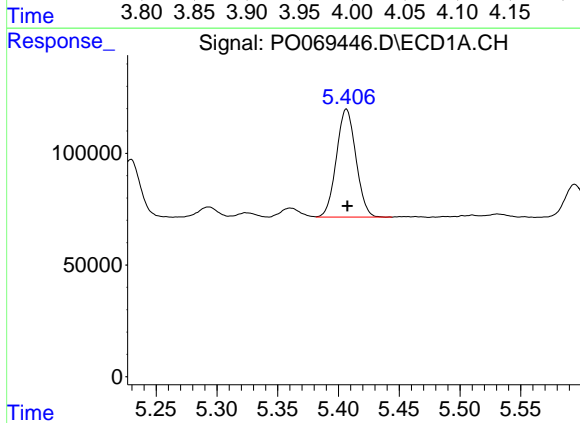


#11 AR-1232-1
 R.T.: 4.830 min
 Delta R.T.: 0.000 min
 Response: 352227
 Conc: 433.03 ng/ml

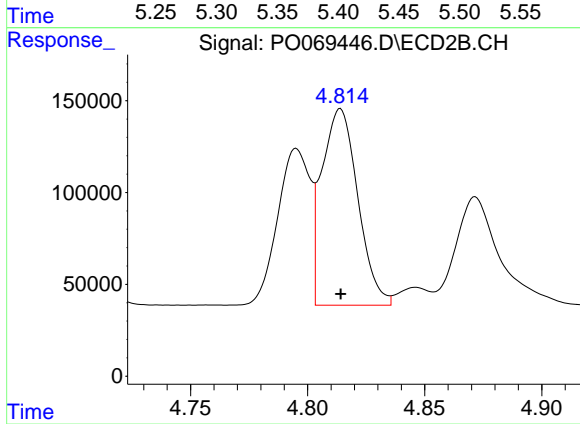
Instrument :
 ECD_O
 ClientSampleId :



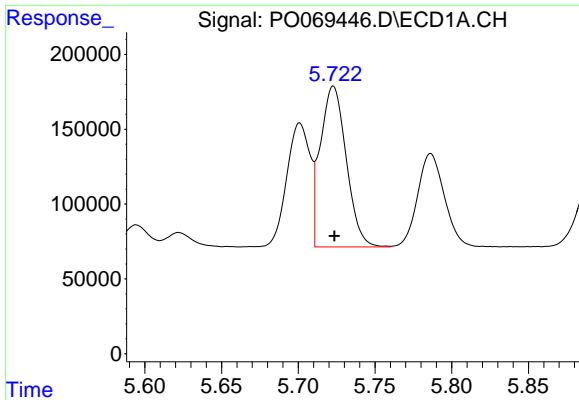
#11 AR-1232-1
 R.T.: 3.998 min
 Delta R.T.: 0.000 min
 Response: 395875
 Conc: 442.77 ng/ml



#12 AR-1232-2
 R.T.: 5.407 min
 Delta R.T.: 0.000 min
 Response: 541406
 Conc: 1263.21 ng/ml



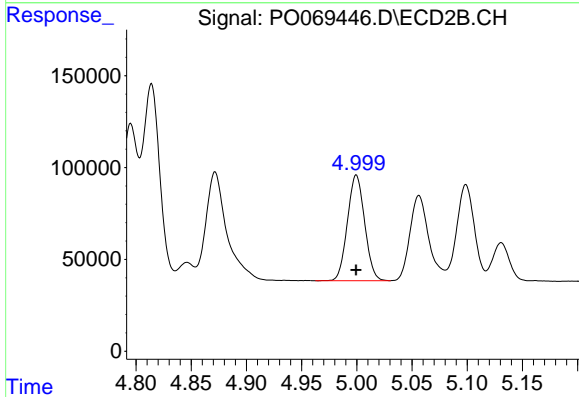
#12 AR-1232-2
 R.T.: 4.814 min
 Delta R.T.: 0.000 min
 Response: 1145826
 Conc: 1185.27 ng/ml



#13 AR-1232-3

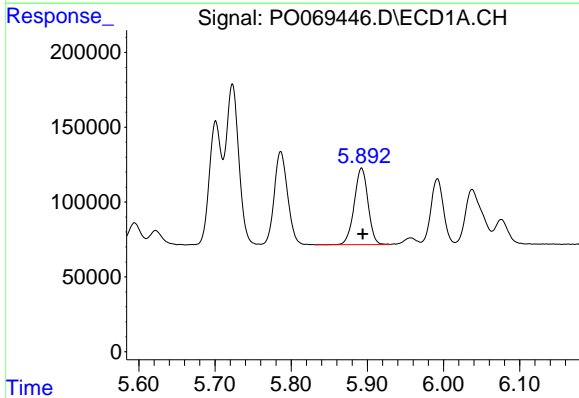
R.T.: 5.723 min
 Delta R.T.: 0.000 min
 Response: 1261220
 Conc: 1261.69 ng/ml

Instrument :
 ECD_O
 ClientSampleId :



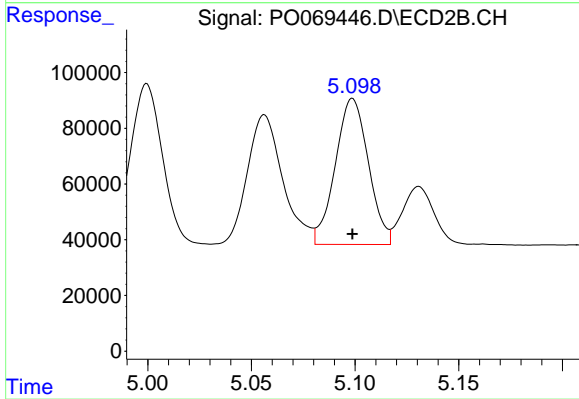
#13 AR-1232-3

R.T.: 5.000 min
 Delta R.T.: 0.000 min
 Response: 625660
 Conc: 1197.49 ng/ml



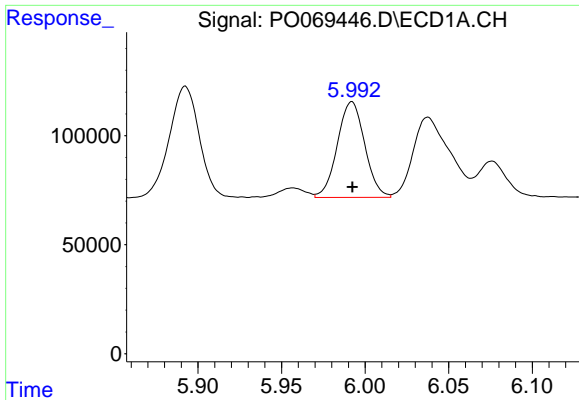
#14 AR-1232-4

R.T.: 5.892 min
 Delta R.T.: -0.001 min
 Response: 644543
 Conc: 1317.32 ng/ml



#14 AR-1232-4

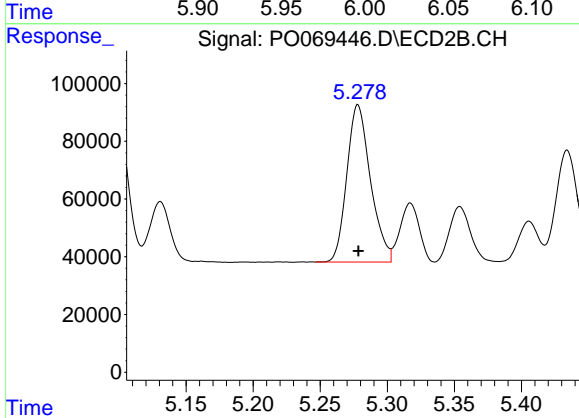
R.T.: 5.099 min
 Delta R.T.: 0.000 min
 Response: 582500
 Conc: 1328.59 ng/ml



#15 AR-1232-5

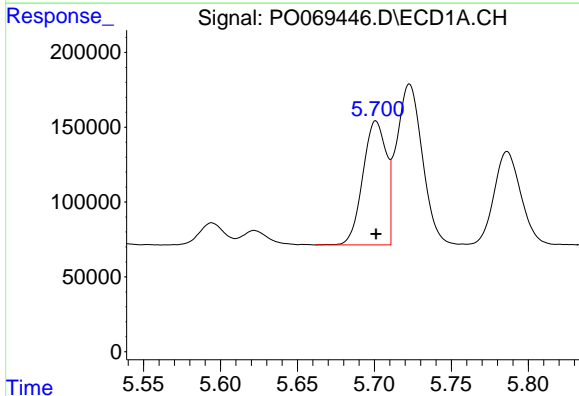
R.T.: 5.992 min
 Delta R.T.: 0.000 min
 Response: 501572
 Conc: 1580.49 ng/ml

Instrument :
 ECD_O
 ClientSampleId :



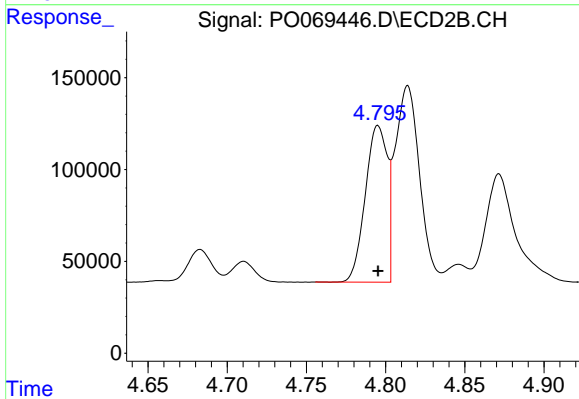
#15 AR-1232-5

R.T.: 5.278 min
 Delta R.T.: 0.000 min
 Response: 666929
 Conc: 1274.86 ng/ml



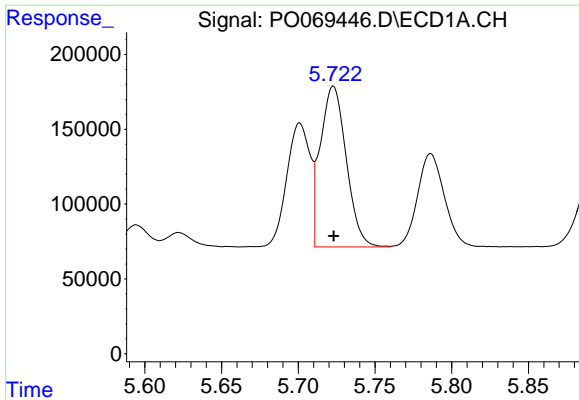
#16 AR-1242-1

R.T.: 5.701 min
 Delta R.T.: 0.000 min
 Response: 876997
 Conc: 672.86 ng/ml



#16 AR-1242-1

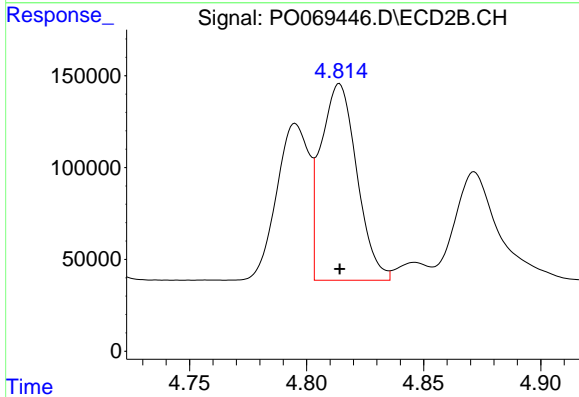
R.T.: 4.795 min
 Delta R.T.: 0.000 min
 Response: 821113
 Conc: 654.86 ng/ml



#17 AR-1242-2

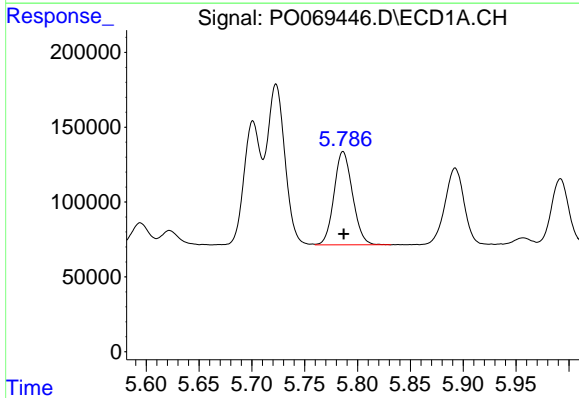
R.T.: 5.723 min
 Delta R.T.: 0.000 min
 Response: 1261220
 Conc: 669.76 ng/ml

Instrument :
 ECD_O
 ClientSampled :



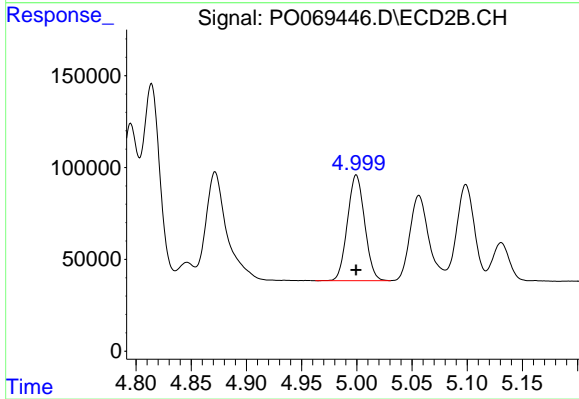
#17 AR-1242-2

R.T.: 4.814 min
 Delta R.T.: 0.000 min
 Response: 1145826
 Conc: 655.83 ng/ml



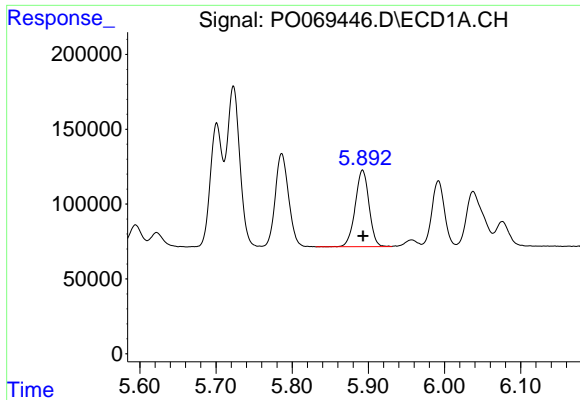
#18 AR-1242-3

R.T.: 5.786 min
 Delta R.T.: 0.000 min
 Response: 757517
 Conc: 667.05 ng/ml



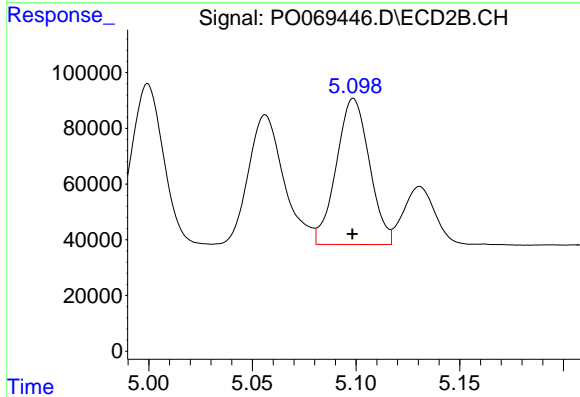
#18 AR-1242-3

R.T.: 5.000 min
 Delta R.T.: 0.000 min
 Response: 625660
 Conc: 649.92 ng/ml

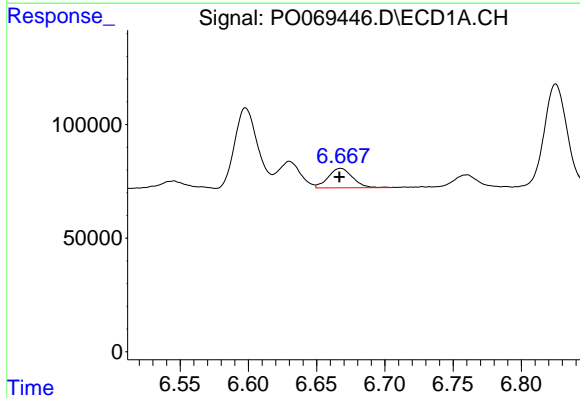


#19 AR-1242-4
 R.T.: 5.892 min
 Delta R.T.: 0.000 min
 Response: 644543
 Conc: 671.68 ng/ml

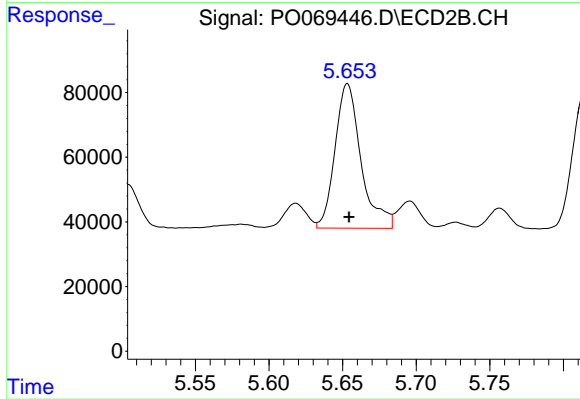
Instrument :
 ECD_O
 ClientSampled :



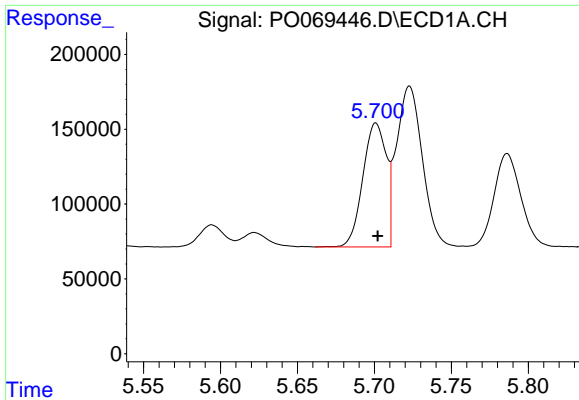
#19 AR-1242-4
 R.T.: 5.099 min
 Delta R.T.: 0.000 min
 Response: 582500
 Conc: 643.88 ng/ml



#20 AR-1242-5
 R.T.: 6.668 min
 Delta R.T.: 0.000 min
 Response: 105650
 Conc: 89.00 ng/ml

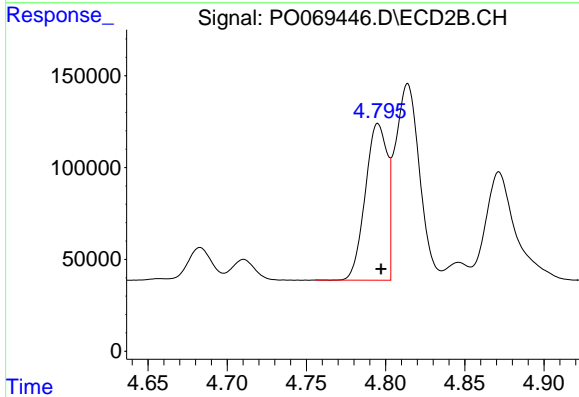


#20 AR-1242-5
 R.T.: 5.653 min
 Delta R.T.: -0.001 min
 Response: 549836
 Conc: 433.81 ng/ml

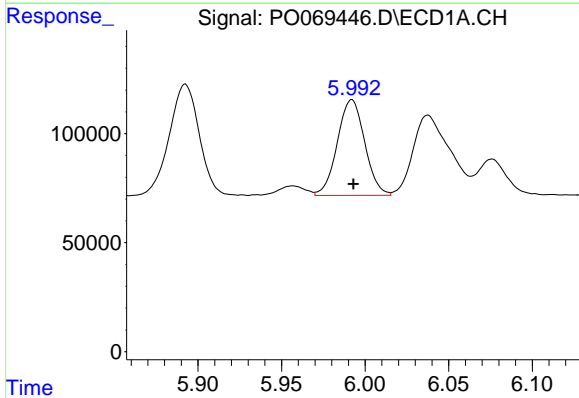


#21 AR-1248-1
 R.T.: 5.701 min
 Delta R.T.: -0.001 min
 Response: 876997
 Conc: 898.04 ng/ml

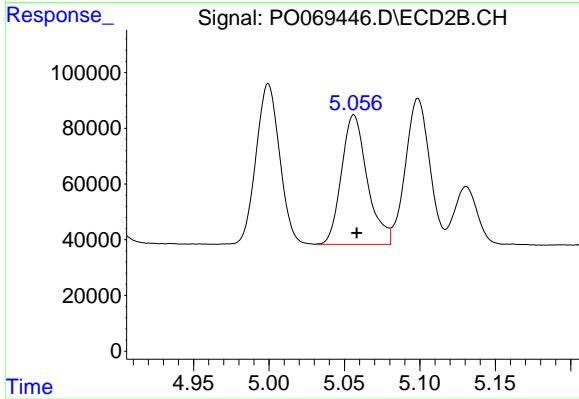
Instrument :
 ECD_O
 ClientSampled :



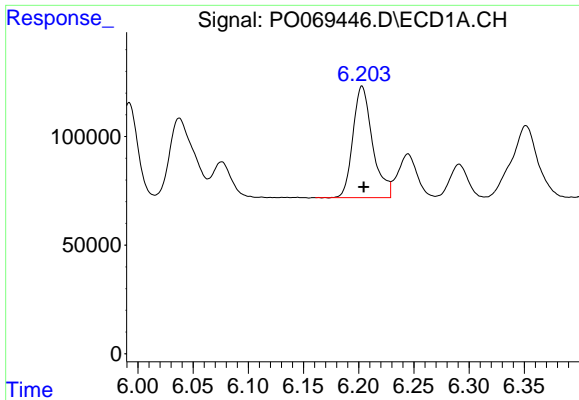
#21 AR-1248-1
 R.T.: 4.795 min
 Delta R.T.: -0.002 min
 Response: 821113
 Conc: 839.03 ng/ml



#22 AR-1248-2
 R.T.: 5.992 min
 Delta R.T.: 0.000 min
 Response: 501572
 Conc: 393.94 ng/ml



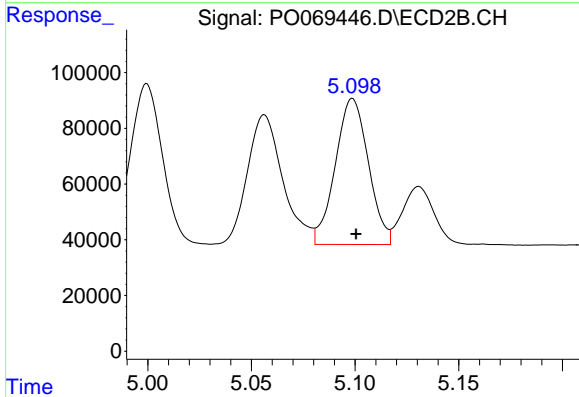
#22 AR-1248-2
 R.T.: 5.056 min
 Delta R.T.: -0.002 min
 Response: 553741
 Conc: 406.75 ng/ml



#23 AR-1248-3

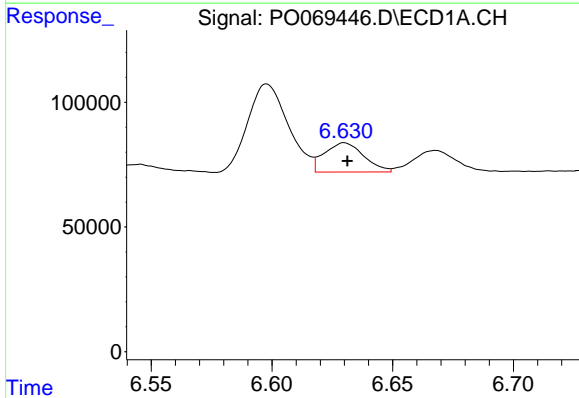
R.T.: 6.203 min
 Delta R.T.: -0.002 min
 Response: 634972
 Conc: 401.76 ng/ml

Instrument :
 ECD_O
 ClientSampled :



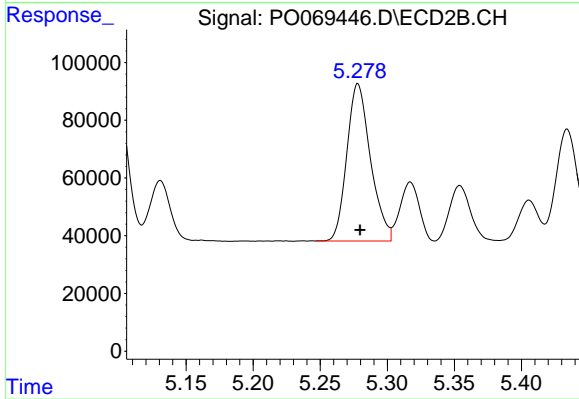
#23 AR-1248-3

R.T.: 5.099 min
 Delta R.T.: -0.002 min
 Response: 582500
 Conc: 461.23 ng/ml



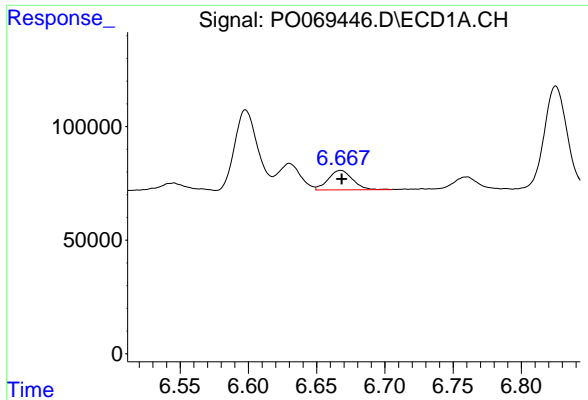
#24 AR-1248-4

R.T.: 6.630 min
 Delta R.T.: -0.001 min
 Response: 133147
 Conc: 65.62 ng/ml



#24 AR-1248-4

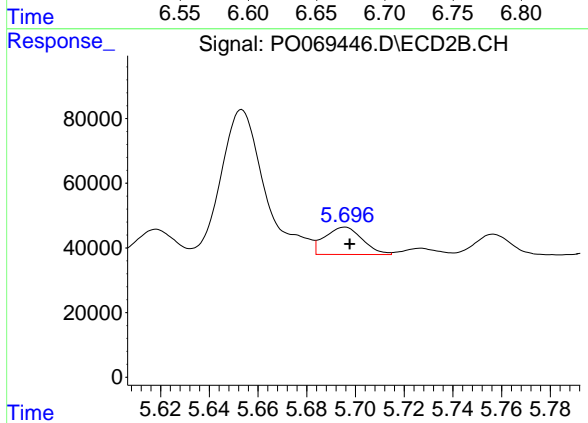
R.T.: 5.278 min
 Delta R.T.: -0.002 min
 Response: 666929
 Conc: 410.58 ng/ml



#25 AR-1248-5

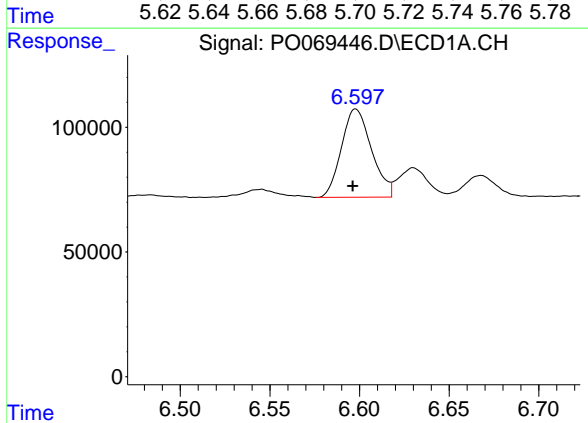
R.T.: 6.668 min
 Delta R.T.: 0.000 min
 Response: 105650
 Conc: 55.05 ng/ml

Instrument :
 ECD_O
 ClientSampleId :



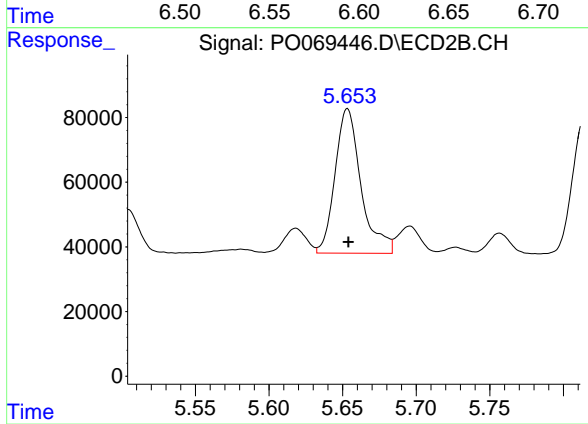
#25 AR-1248-5

R.T.: 5.696 min
 Delta R.T.: -0.002 min
 Response: 90428
 Conc: 54.80 ng/ml



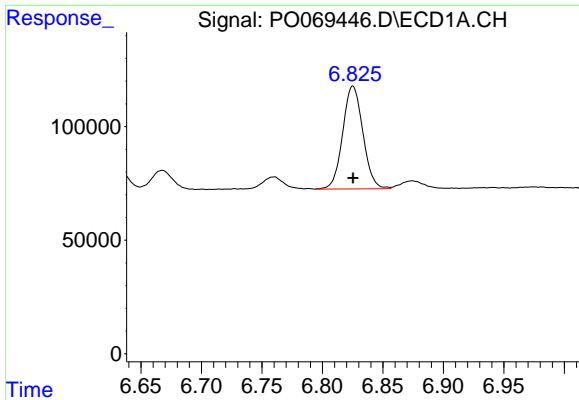
#26 AR-1254-1

R.T.: 6.598 min
 Delta R.T.: 0.002 min
 Response: 413187
 Conc: 207.57 ng/ml



#26 AR-1254-1

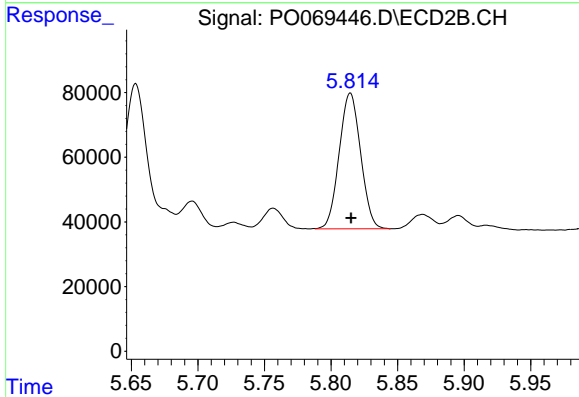
R.T.: 5.653 min
 Delta R.T.: 0.000 min
 Response: 549836
 Conc: 211.22 ng/ml



#27 AR-1254-2

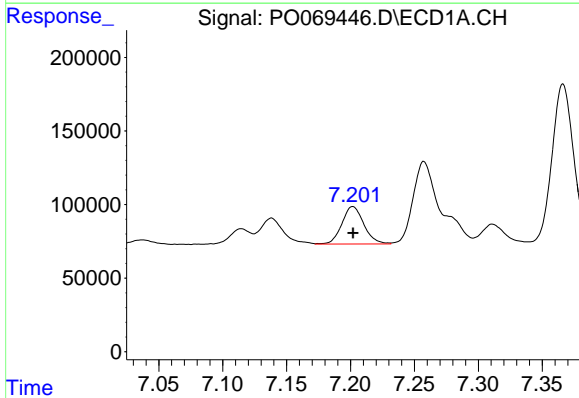
R.T.: 6.825 min
 Delta R.T.: 0.000 min
 Response: 526510
 Conc: 164.01 ng/ml

Instrument :
 ECD_O
 ClientSampleId :



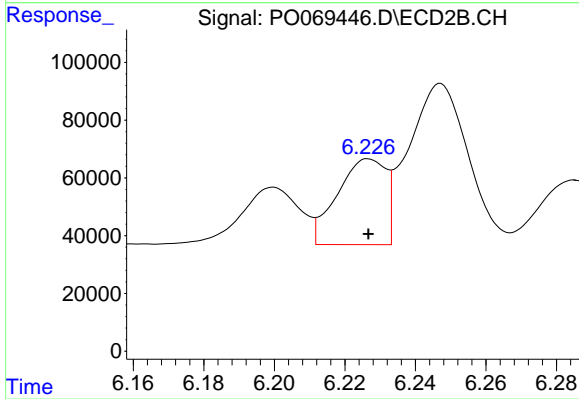
#27 AR-1254-2

R.T.: 5.815 min
 Delta R.T.: 0.000 min
 Response: 471097
 Conc: 204.06 ng/ml



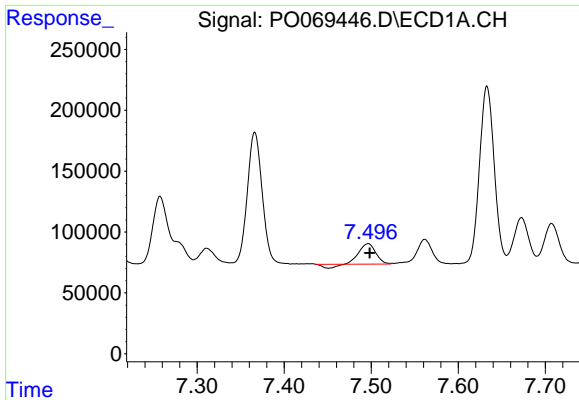
#28 AR-1254-3

R.T.: 7.202 min
 Delta R.T.: 0.000 min
 Response: 303717
 Conc: 86.48 ng/ml



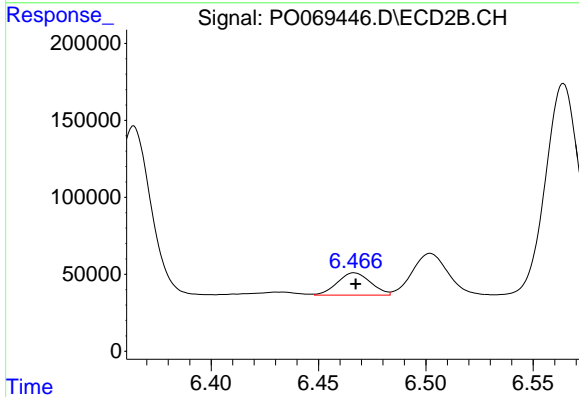
#28 AR-1254-3

R.T.: 6.227 min
 Delta R.T.: 0.000 min
 Response: 284101
 Conc: 75.65 ng/ml

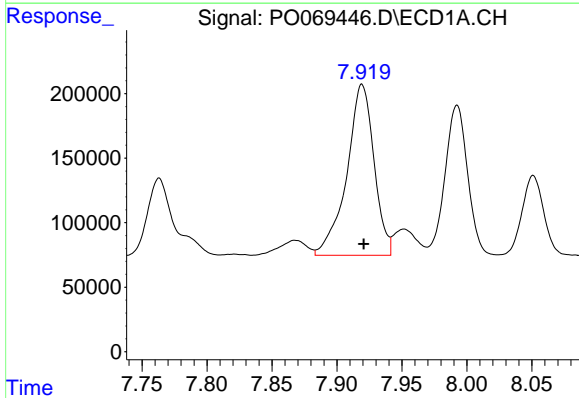


#29 AR-1254-4
 R.T.: 7.497 min
 Delta R.T.: -0.002 min
 Response: 200325
 Conc: 66.93 ng/ml

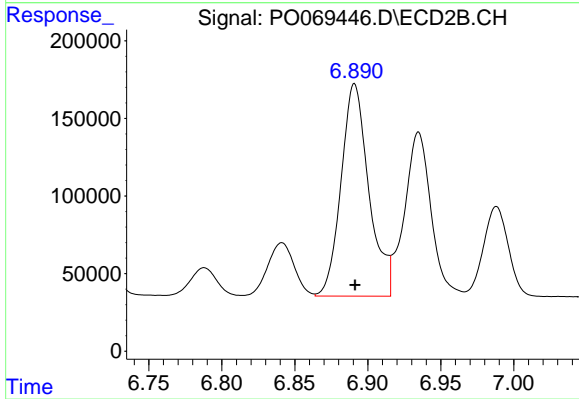
Instrument :
 ECD_O
 ClientSampled :



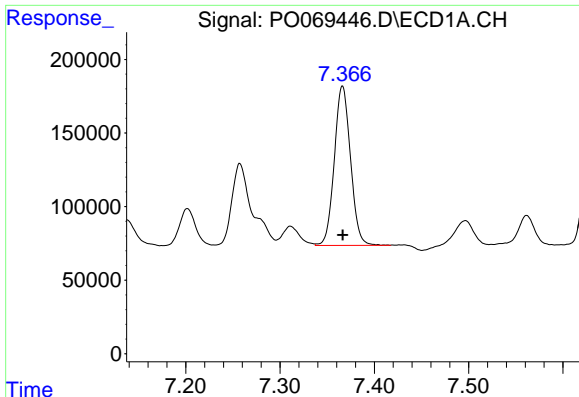
#29 AR-1254-4
 R.T.: 6.467 min
 Delta R.T.: 0.000 min
 Response: 156541
 Conc: 61.94 ng/ml



#30 AR-1254-5
 R.T.: 7.919 min
 Delta R.T.: -0.001 min
 Response: 1934233
 Conc: 642.86 ng/ml



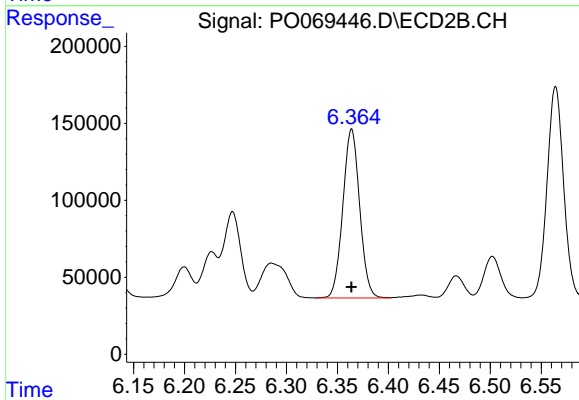
#30 AR-1254-5
 R.T.: 6.891 min
 Delta R.T.: 0.000 min
 Response: 1815640
 Conc: 505.90 ng/ml



#31 AR-1260-1

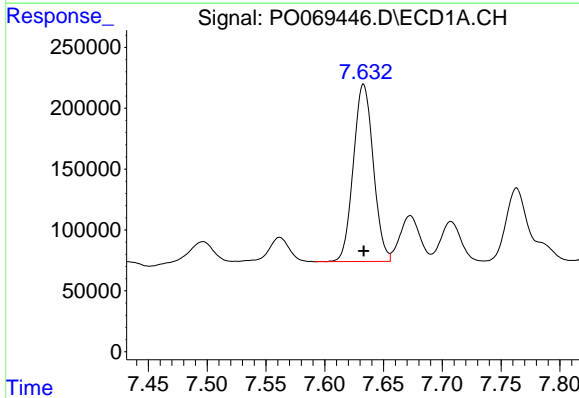
R.T.: 7.366 min
 Delta R.T.: 0.000 min
 Response: 1292320
 Conc: 491.49 ng/ml

Instrument :
 ECD_O
 ClientSampled :



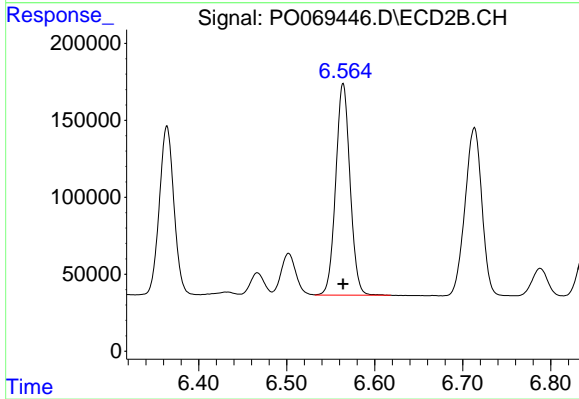
#31 AR-1260-1

R.T.: 6.364 min
 Delta R.T.: 0.000 min
 Response: 1260388
 Conc: 477.86 ng/ml



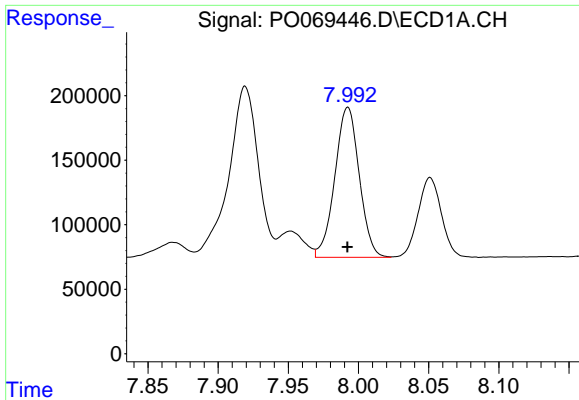
#32 AR-1260-2

R.T.: 7.633 min
 Delta R.T.: 0.000 min
 Response: 1718745
 Conc: 484.51 ng/ml



#32 AR-1260-2

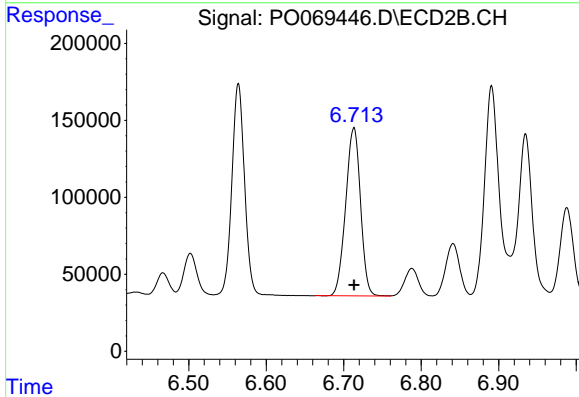
R.T.: 6.564 min
 Delta R.T.: 0.000 min
 Response: 1558566
 Conc: 476.17 ng/ml



#33 AR-1260-3

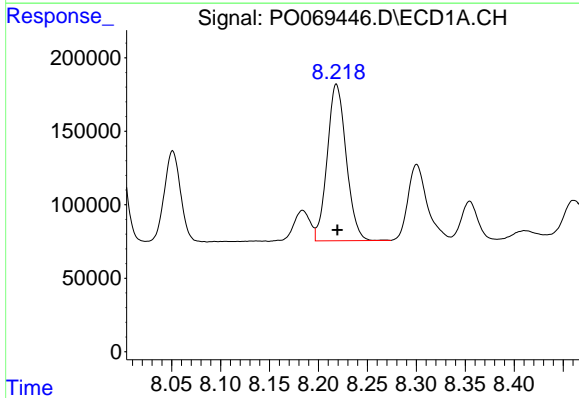
R.T.: 7.992 min
 Delta R.T.: 0.000 min
 Response: 1409758
 Conc: 487.64 ng/ml

Instrument :
 ECD_O
 ClientSampled :



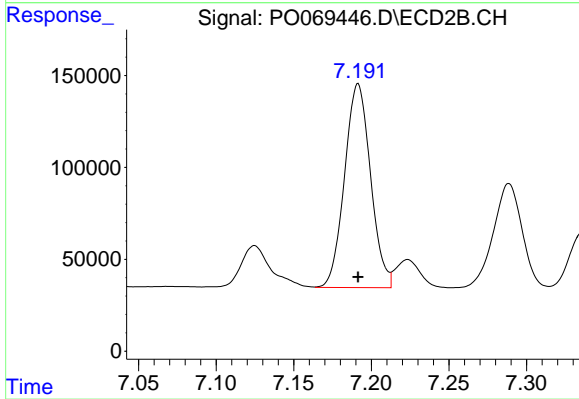
#33 AR-1260-3

R.T.: 6.713 min
 Delta R.T.: 0.000 min
 Response: 1451772
 Conc: 476.83 ng/ml



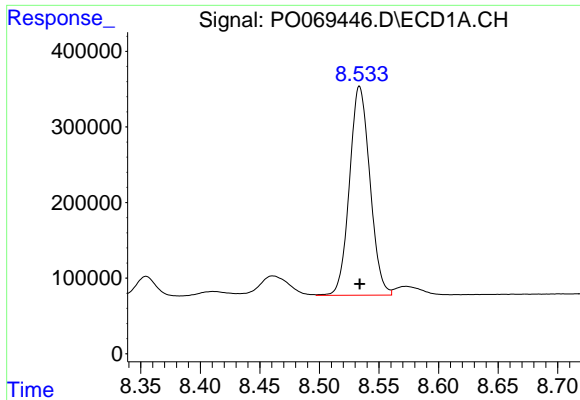
#34 AR-1260-4

R.T.: 8.218 min
 Delta R.T.: -0.001 min
 Response: 1436059
 Conc: 484.84 ng/ml



#34 AR-1260-4

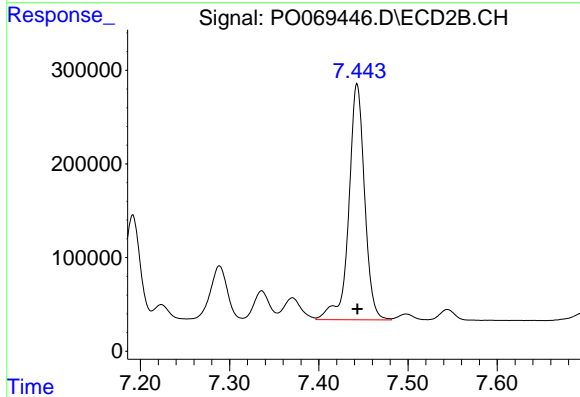
R.T.: 7.191 min
 Delta R.T.: 0.000 min
 Response: 1292602
 Conc: 477.54 ng/ml



#35 AR-1260-5

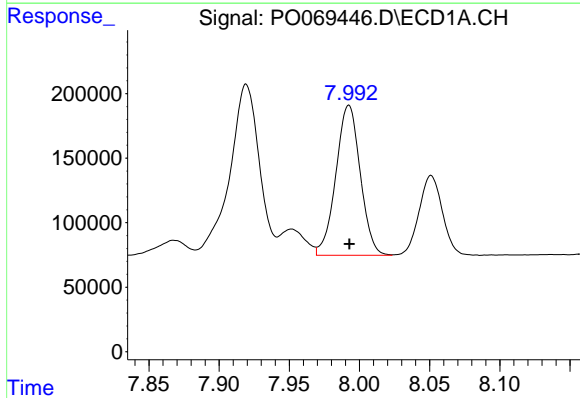
R.T.: 8.534 min
 Delta R.T.: 0.000 min
 Response: 3298113
 Conc: 487.43 ng/ml

Instrument :
 ECD_O
 ClientSampleId :



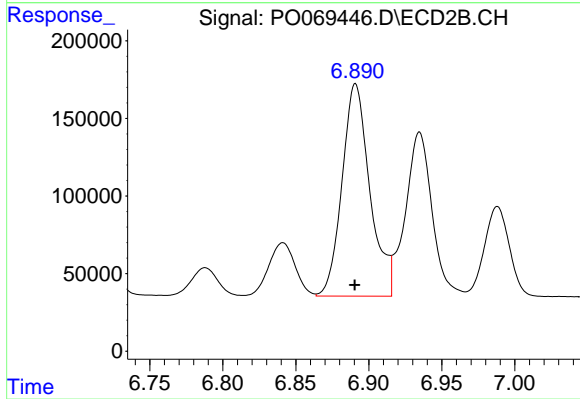
#35 AR-1260-5

R.T.: 7.443 min
 Delta R.T.: 0.000 min
 Response: 3112649
 Conc: 485.70 ng/ml



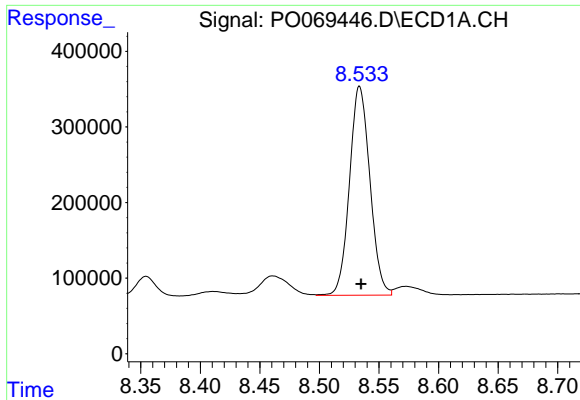
#36 AR-1262-1

R.T.: 7.992 min
 Delta R.T.: 0.000 min
 Response: 1409758
 Conc: 354.26 ng/ml



#36 AR-1262-1

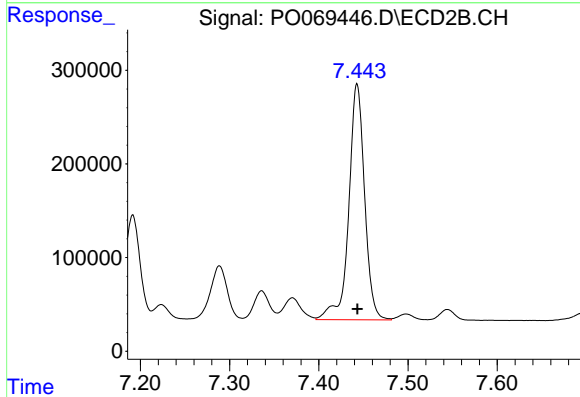
R.T.: 6.891 min
 Delta R.T.: 0.000 min
 Response: 1815640
 Conc: 940.26 ng/ml



#37 AR-1262-2

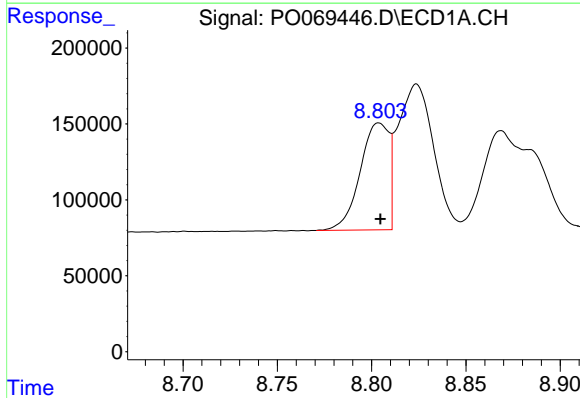
R.T.: 8.534 min
 Delta R.T.: -0.001 min
 Response: 3298113
 Conc: 456.92 ng/ml

Instrument :
 ECD_O
 ClientSampleId :



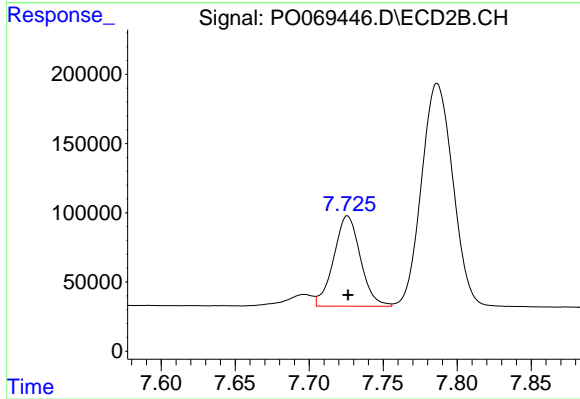
#37 AR-1262-2

R.T.: 7.443 min
 Delta R.T.: 0.000 min
 Response: 3112649
 Conc: 476.72 ng/ml



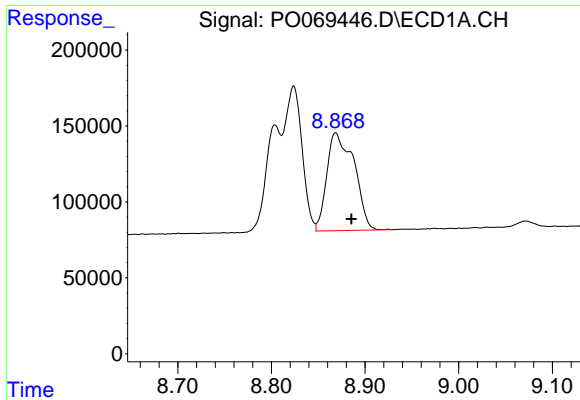
#38 AR-1262-3

R.T.: 8.804 min
 Delta R.T.: 0.000 min
 Response: 747147
 Conc: 156.04 ng/ml



#38 AR-1262-3

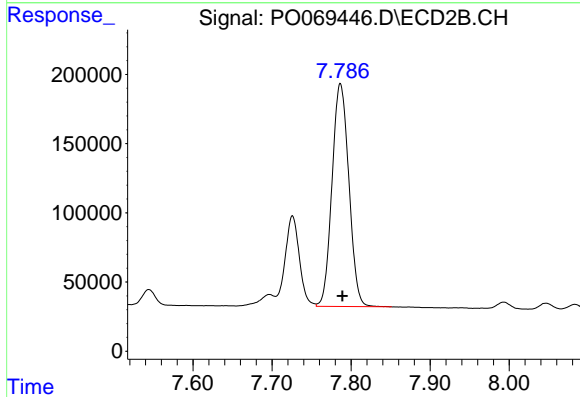
R.T.: 7.726 min
 Delta R.T.: 0.000 min
 Response: 819185
 Conc: 303.96 ng/ml



#39 AR-1262-4

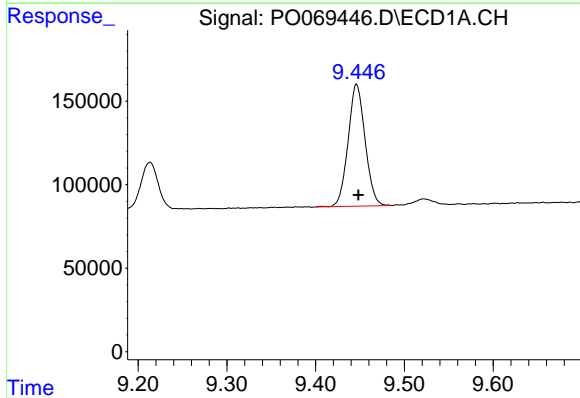
R.T.: 8.869 min
 Delta R.T.: -0.017 min
 Response: 1305611
 Conc: 673.55 ng/ml

Instrument :
 ECD_O
 ClientSampled :



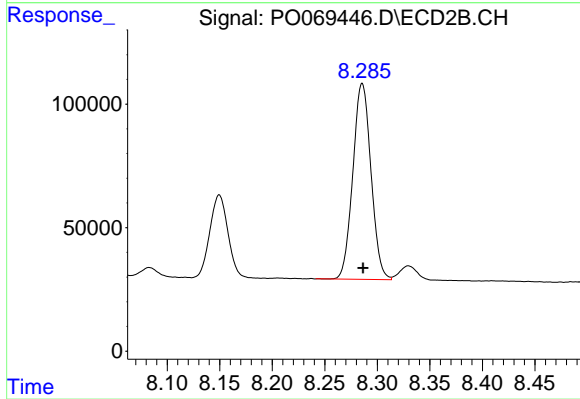
#39 AR-1262-4

R.T.: 7.786 min
 Delta R.T.: -0.003 min
 Response: 2383301
 Conc: 478.66 ng/ml



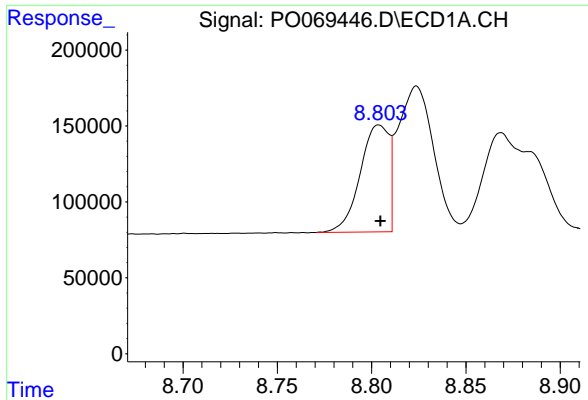
#40 AR-1262-5

R.T.: 9.446 min
 Delta R.T.: -0.002 min
 Response: 972236
 Conc: 372.77 ng/ml



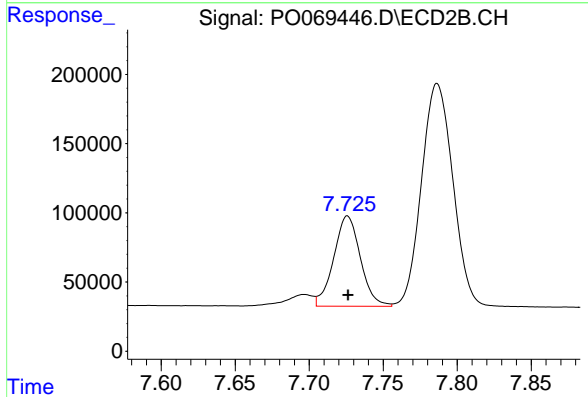
#40 AR-1262-5

R.T.: 8.286 min
 Delta R.T.: 0.000 min
 Response: 951308
 Conc: 382.84 ng/ml

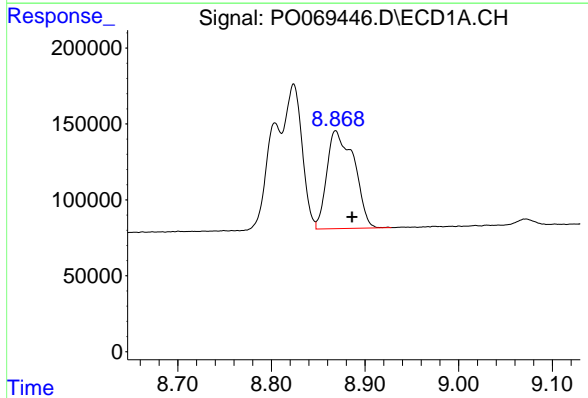


#41 AR-1268-1
 R.T.: 8.804 min
 Delta R.T.: 0.000 min
 Response: 747147
 Conc: 81.51 ng/ml

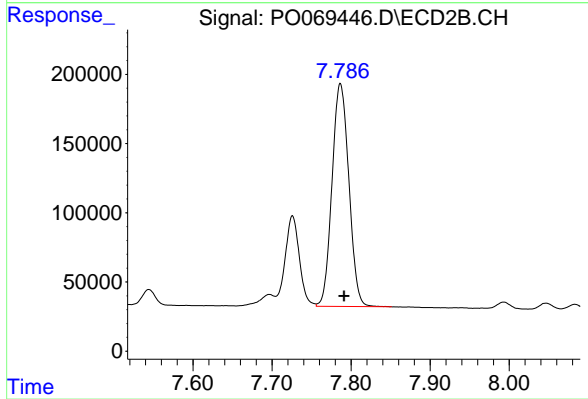
Instrument :
 ECD_O
 ClientSampled :



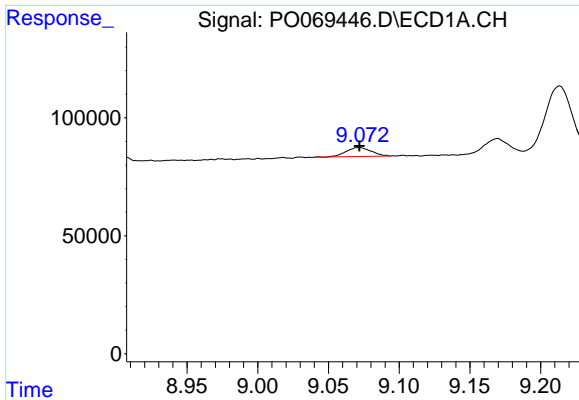
#41 AR-1268-1
 R.T.: 7.726 min
 Delta R.T.: 0.000 min
 Response: 819185
 Conc: 104.65 ng/ml



#42 AR-1268-2
 R.T.: 8.869 min
 Delta R.T.: -0.018 min
 Response: 1305611
 Conc: 157.52 ng/ml



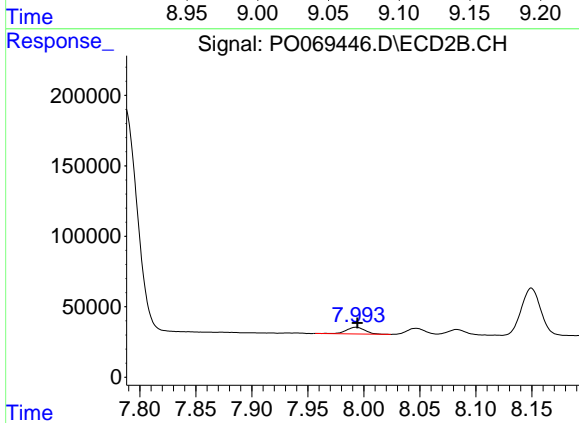
#42 AR-1268-2
 R.T.: 7.786 min
 Delta R.T.: -0.005 min
 Response: 2383301
 Conc: 333.66 ng/ml



#43 AR-1268-3

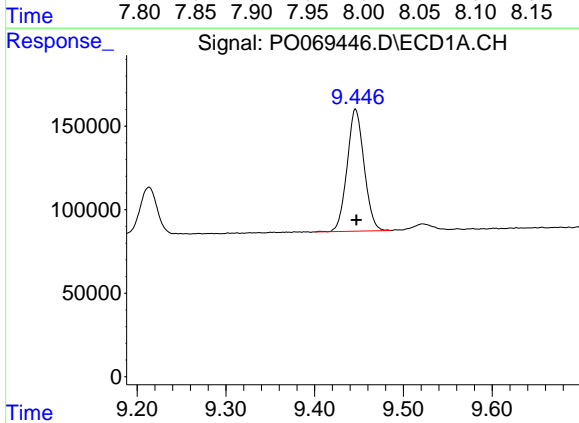
R.T.: 9.072 min
 Delta R.T.: 0.000 min
 Response: 47430
 Conc: 6.70 ng/ml

Instrument :
 ECD_O
 ClientSampled :



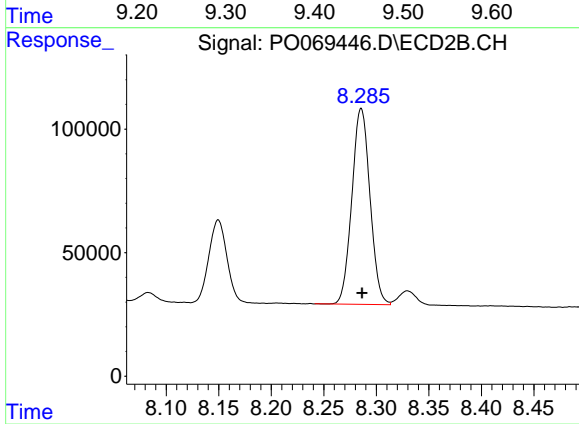
#43 AR-1268-3

R.T.: 7.993 min
 Delta R.T.: -0.001 min
 Response: 55819
 Conc: 9.35 ng/ml



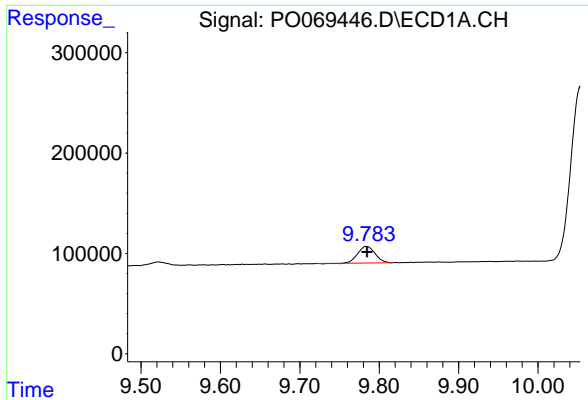
#44 AR-1268-4

R.T.: 9.446 min
 Delta R.T.: -0.001 min
 Response: 972236
 Conc: 320.77 ng/ml



#44 AR-1268-4

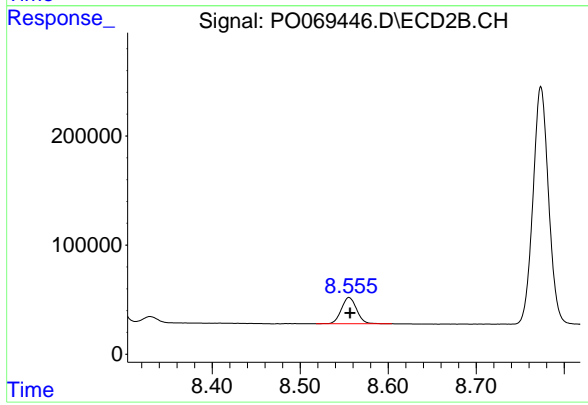
R.T.: 8.286 min
 Delta R.T.: 0.000 min
 Response: 951308
 Conc: 328.94 ng/ml



#45 AR-1268-5

R.T.: 9.784 min
Delta R.T.: 0.000 min
Response: 253481
Conc: 11.41 ng/ml

Instrument :
ECD_O
ClientSampleId :



#45 AR-1268-5

R.T.: 8.556 min
Delta R.T.: -0.001 min
Response: 289941
Conc: 15.04 ng/ml