

Data Path : Z:\pestpcbsrv\HPCHEM1\ECD_0\Data\P0070821\
 Data File : P0079424.D
 Signal(s) : Signal #1: ECD1A.CH Signal #2: ECD2B.CH
 Acq On : 08 Jul 2021 23:18
 Operator : DD\AJ
 Sample : AR1268ICC050
 Misc :
 ALS Vial : 34 Sample Multiplier: 1

Instrument :
 ECD_0
 ClientSampleId :
 AR1268ICC050

Integration File signal 1: autoint1.e
 Integration File signal 2: autoint2.e
 Quant Time: Jul 09 04:30:58 2021
 Quant Method : Z:\pestpcbsrv\HPCHEM1\ECD_0\methods\P0070821.M
 Quant Title : GC EXTRACTABLES
 QLast Update : Fri Jul 09 04:29:34 2021
 Response via : Initial Calibration
 Integrator: ChemStation 6890 Scale Mode: Small noise peaks clipped

Volume Inj. : 2 µl
 Signal #1 Phase : ZB-MR1 Signal #2 Phase: ZB-MR2
 Signal #1 Info : 30Mx0.32mmx 0.50µ Signal #2 Info : 30M x 0.32mm x 0.25µm

Compound	RT#1	RT#2	Resp#1	Resp#2	ng/ml	ng/ml

System Monitoring Compounds						
1) SA Tetrachlo...	5.021	4.229	344246	156754	4.875	5.271
2) SA Decachlor...	11.149	9.680	502979	269505	5.511	5.903
Target Compounds						
41) L9 AR-1268-1	9.572	8.518	386874	232183	53.356	56.928
42) L9 AR-1268-2	9.672	8.583	360264	209889	53.245	57.453
43) L9 AR-1268-3	9.907	8.796	305107	182140	53.706	58.375
44) L9 AR-1268-4	10.366	9.094	132275	79940	52.159	55.472
45) L9 AR-1268-5	10.797	9.405	990136	537006	52.230	56.033

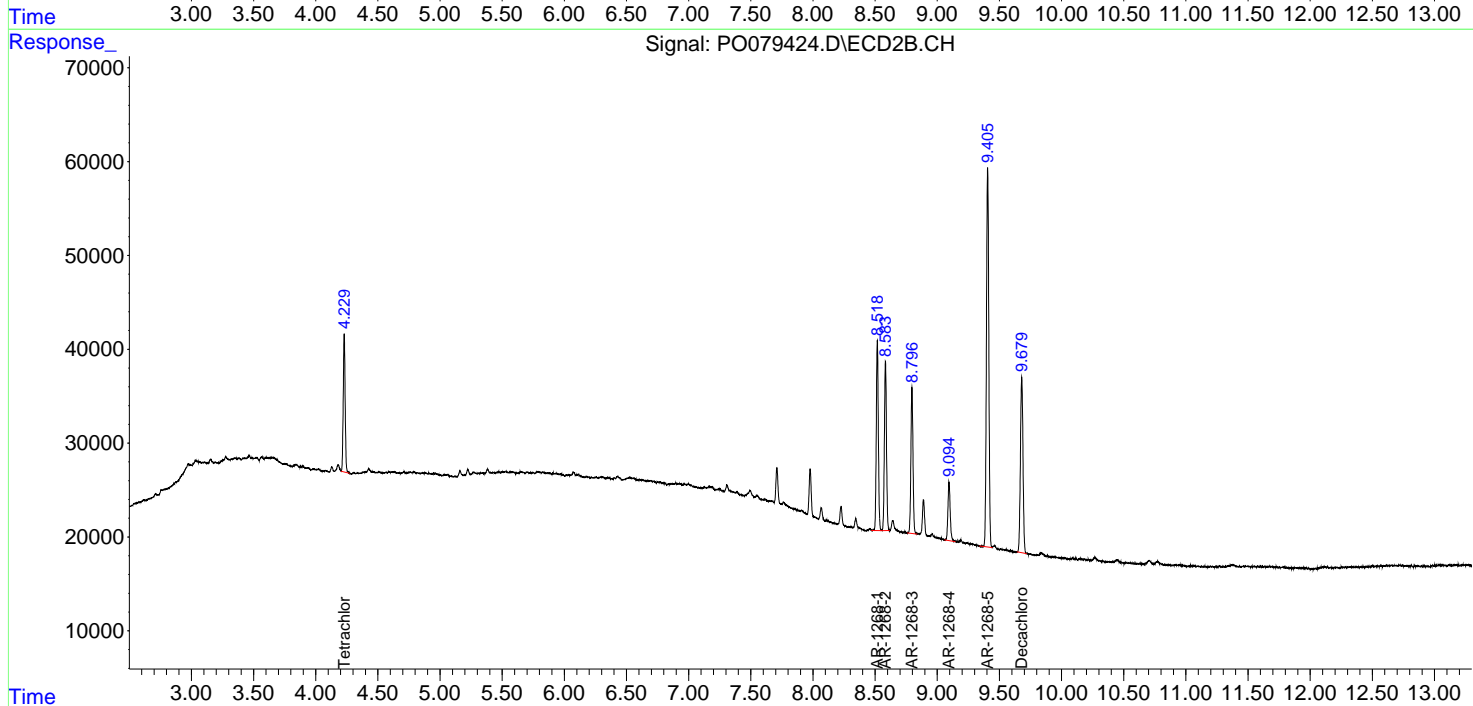
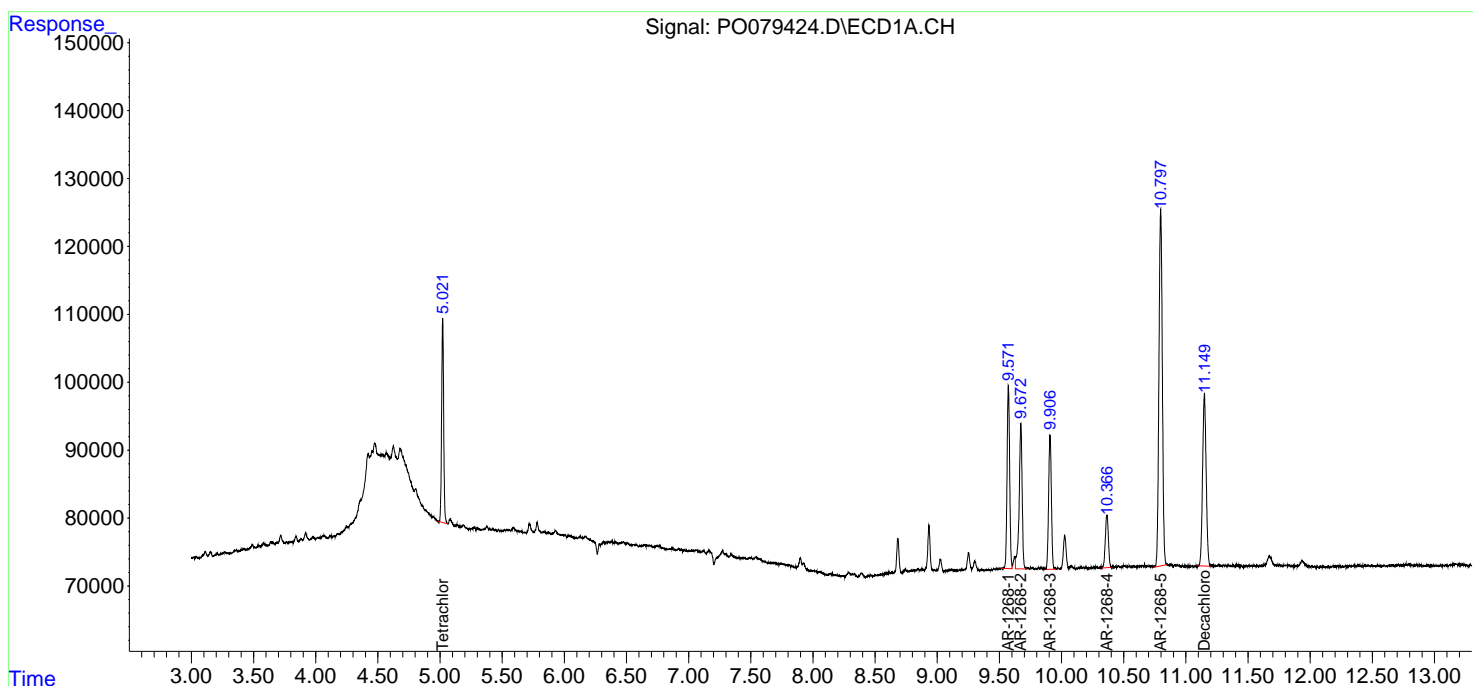
(f)=RT Delta > 1/2 Window (#)=Amounts differ by > 25% (m)=manual int.

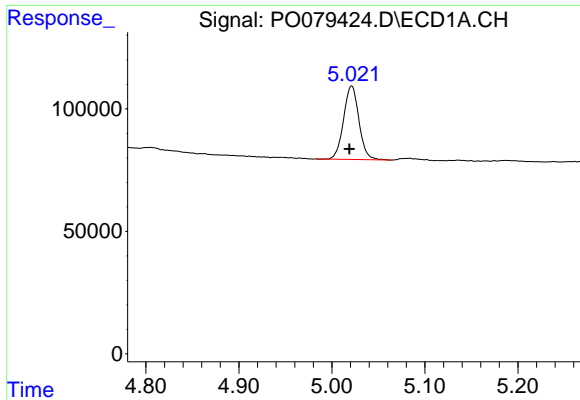
Data Path : Z:\pestpcbsrv\HPCHEM1\ECD_0\Data\P0070821\
 Data File : P0079424.D
 Signal(s) : Signal #1: ECD1A.CH Signal #2: ECD2B.CH
 Acq On : 08 Jul 2021 23:18
 Operator : DD\AJ
 Sample : AR1268ICC050
 Misc :
 ALS Vial : 34 Sample Multiplier: 1

Instrument :
 ECD_O
 ClientSampleId :
 AR1268ICC050

Integration File signal 1: autoint1.e
 Integration File signal 2: autoint2.e
 Quant Time: Jul 09 04:30:58 2021
 Quant Method : Z:\pestpcbsrv\HPCHEM1\ECD_0\methods\P0070821.M
 Quant Title : GC EXTRACTABLES
 QLast Update : Fri Jul 09 04:29:34 2021
 Response via : Initial Calibration
 Integrator: ChemStation 6890 Scale Mode: Small noise peaks clipped

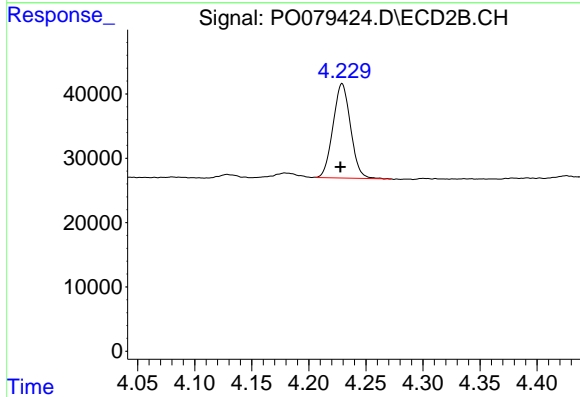
Volume Inj. : 2 µl
 Signal #1 Phase : ZB-MR1 Signal #2 Phase: ZB-MR2
 Signal #1 Info : 30Mx0.32mmx 0.50µ Signal #2 Info : 30M x 0.32mm x 0.25µm



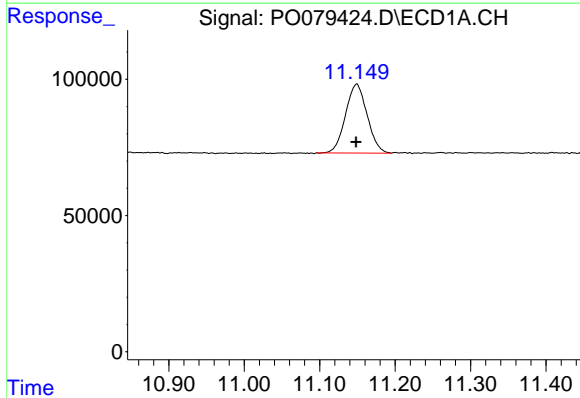


#1 Tetrachloro-m-xylene
 R.T.: 5.021 min
 Delta R.T.: 0.002 min
 Response: 344246
 Conc: 4.88 ng/ml

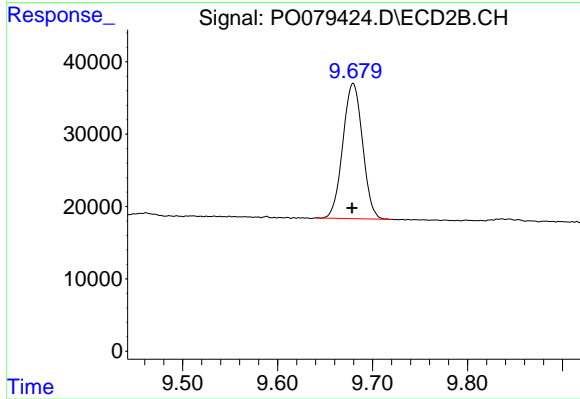
Instrument :
 ECD_O
 ClientSampleId :
 AR1268ICC050



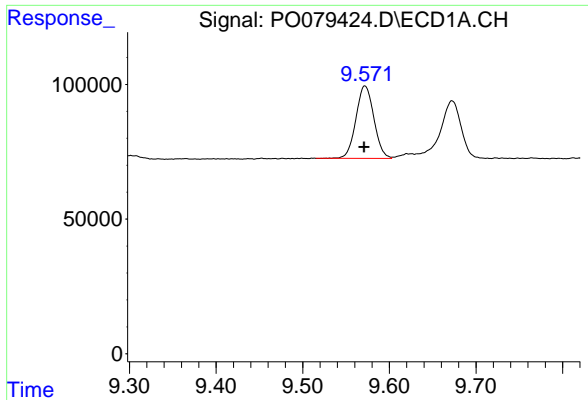
#1 Tetrachloro-m-xylene
 R.T.: 4.229 min
 Delta R.T.: 0.002 min
 Response: 156754
 Conc: 5.27 ng/ml



#2 Decachlorobiphenyl
 R.T.: 11.149 min
 Delta R.T.: 0.001 min
 Response: 502979
 Conc: 5.51 ng/ml



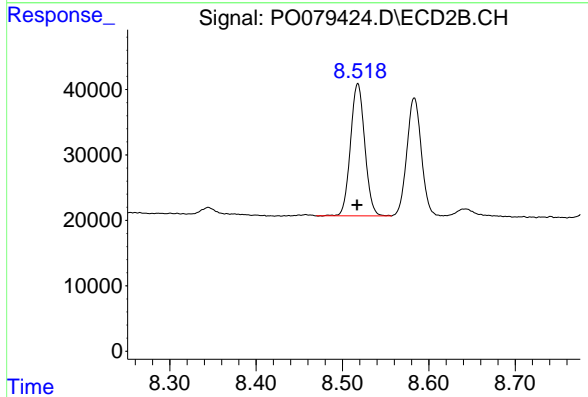
#2 Decachlorobiphenyl
 R.T.: 9.680 min
 Delta R.T.: 0.001 min
 Response: 269505
 Conc: 5.90 ng/ml



#41 AR-1268-1

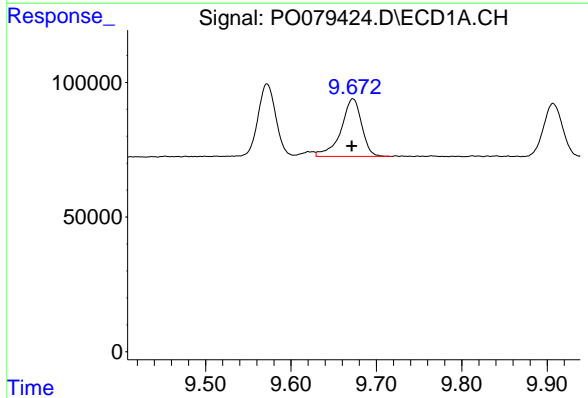
R.T.: 9.572 min
 Delta R.T.: 0.001 min
 Response: 386874
 Conc: 53.36 ng/ml

Instrument :
 ECD_O
 ClientSampled :
 AR1268ICC050



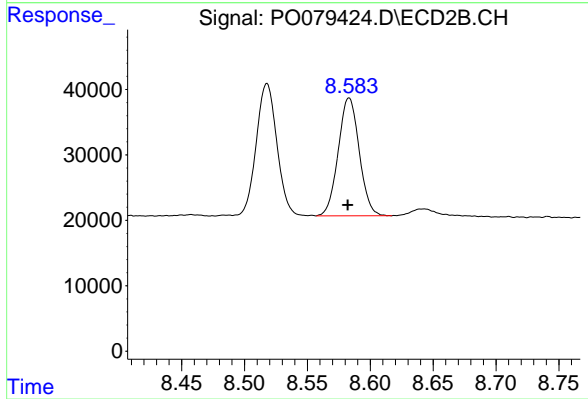
#41 AR-1268-1

R.T.: 8.518 min
 Delta R.T.: 0.000 min
 Response: 232183
 Conc: 56.93 ng/ml



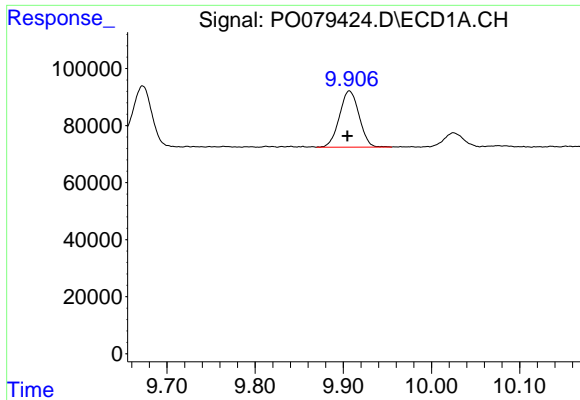
#42 AR-1268-2

R.T.: 9.672 min
 Delta R.T.: 0.001 min
 Response: 360264
 Conc: 53.24 ng/ml



#42 AR-1268-2

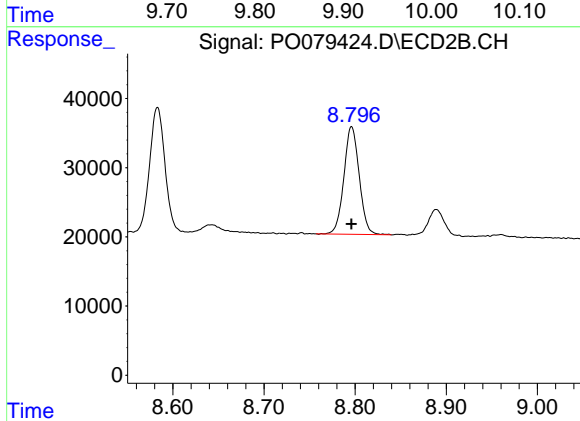
R.T.: 8.583 min
 Delta R.T.: 0.001 min
 Response: 209889
 Conc: 57.45 ng/ml



#43 AR-1268-3

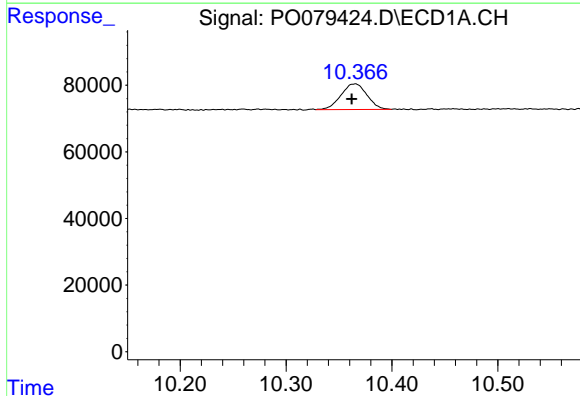
R.T.: 9.907 min
 Delta R.T.: 0.002 min
 Response: 305107
 Conc: 53.71 ng/ml

Instrument :
 ECD_O
 ClientSampled :
 AR1268ICC050



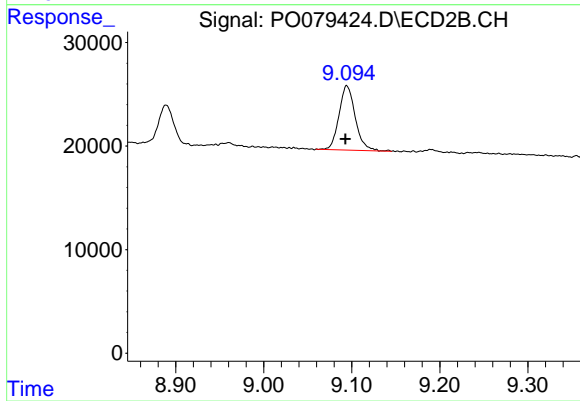
#43 AR-1268-3

R.T.: 8.796 min
 Delta R.T.: 0.000 min
 Response: 182140
 Conc: 58.38 ng/ml



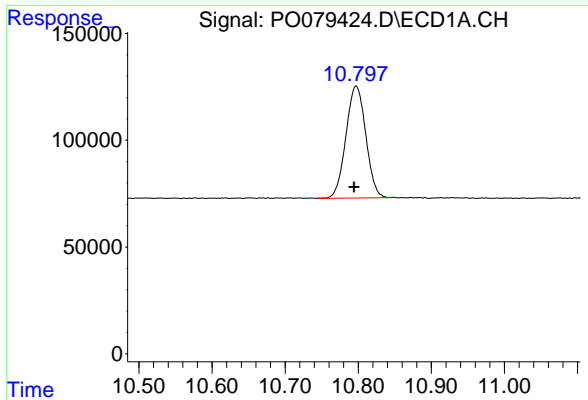
#44 AR-1268-4

R.T.: 10.366 min
 Delta R.T.: 0.004 min
 Response: 132275
 Conc: 52.16 ng/ml



#44 AR-1268-4

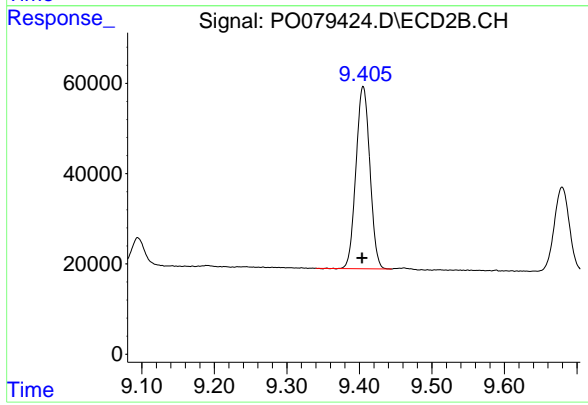
R.T.: 9.094 min
 Delta R.T.: 0.001 min
 Response: 79940
 Conc: 55.47 ng/ml



#45 AR-1268-5

R.T.: 10.797 min
Delta R.T.: 0.003 min
Response: 990136
Conc: 52.23 ng/ml

Instrument :
ECD_O
ClientSampled :
AR1268ICC050



#45 AR-1268-5

R.T.: 9.405 min
Delta R.T.: 0.002 min
Response: 537006
Conc: 56.03 ng/ml