

Data Path : Z:\pestpcbsrv\HPCHEM1\ECD_0\Data\P0070825\
 Data File : PO112086.D
 Signal(s) : Signal #1: ECD1A.ch Signal #2: ECD2B.ch
 Acq On : 08 Jul 2025 13:32
 Operator : YP/AJ
 Sample : HEXANE
 Misc :
 ALS Vial : 1 Sample Multiplier: 1

Instrument :
 ECD_0
 ClientSampleId :
 HEXANE

Integration File signal 1: autoint1.e
 Integration File signal 2: autoint2.e
 Quant Time: Jul 09 04:03:59 2025
 Quant Method : Z:\pestpcbsrv\HPCHEM1\ECD_0\methods\P0070825.M
 Quant Title : GC EXTRACTABLES
 QLast Update : Wed Jul 09 04:02:23 2025
 Response via : Initial Calibration
 Integrator: ChemStation

Volume Inj. : 2 µl
 Signal #1 Phase : ZB-MR1 Signal #2 Phase: ZB-MR2
 Signal #1 Info : 30Mx0.32mmx 0.50µ Signal #2 Info : 30M x 0.32mm x 0.25µm

Compound	RT#1	RT#2	Resp#1	Resp#2	ng/ml	ng/ml
System Monitoring Compounds						
1) SA Tetrachlo...	3.698f	3.684	262101	16933	0.026	0.003 #
2) SA Decachlor...	8.694	8.665	220621	92904	0.032	0.054 #
Target Compounds						
3) L1 AR-1016-1	4.769	4.759	224703	238964	0.661	1.072 #
4) L1 AR-1016-2	4.769	4.789	224703	157508	0.452	0.479
5) L1 AR-1016-3	4.854	4.957	1757576	814245	5.429	4.793
6) L1 AR-1016-4	4.959	4.993	3111893	361957	12.118	2.638 #
7) L1 AR-1016-5	5.212	5.219	15155349	1716211	55.380	9.952 #
8) L2 AR-1221-1	3.919f	3.873	478708	52908	4.105	0.643 #
9) L2 AR-1221-2	3.919f	3.961	478708	84417	6.072	1.422 #
10) L2 AR-1221-3	4.030	4.035	-67024	53107	N.D.	0.281 #
11) L3 AR-1232-1	4.060	4.035	246529	53107	1.148	0.354 #
12) L3 AR-1232-2	4.517	4.759	794020	238964	6.987	1.561 #
13) L3 AR-1232-3	4.769	4.935	224703	512259	0.981	6.784 #
14) L3 AR-1232-4	4.959	5.022	3111893	439047	27.226	6.653 #
15) L3 AR-1232-5	5.022	5.185	5773398	9539059	78.656	128.455 #
16) L4 AR-1242-1	4.769	4.742	224703	472909	0.776	2.439 #
17) L4 AR-1242-2	4.769	4.759	224703	238964	0.528	0.843 #
18) L4 AR-1242-3	4.854	4.935	1757576	512259	6.422	3.516 #
19) L4 AR-1242-4	4.959	5.022	3111893	439047	13.811	3.095 #
20) L4 AR-1242-5	5.595	5.534	9105293	2549716	43.016	14.030 #
21) L5 AR-1248-1	4.769	4.742	224703	472909	0.990	3.064 #
22) L5 AR-1248-2	5.022	4.986	5773398	719758	18.725	3.498 #
23) L5 AR-1248-3	5.212	5.022	15155349	439047	37.207	2.044 #
24) L5 AR-1248-4	5.573	5.185	15665215	9539059	27.142	36.869 #
25) L5 AR-1248-5	5.595	5.596	9105293	2173400	23.329	8.675 #
26) L6 AR-1254-1	5.573	5.534	15665215	2549716	25.467	6.689 #
27) L6 AR-1254-2	5.728	5.691	23851252	5922508	44.525	17.849 #
28) L6 AR-1254-3	6.114	6.070	1267259	6330483	1.509	13.133 #
29) L6 AR-1254-4	6.375	6.309	832237	1333711	1.730	5.116 #
30) L6 AR-1254-5	6.773	6.734	279152	119589	0.361	0.336
31) L7 AR-1260-1	6.247	6.234	2872630	2681422	5.731	9.557 #
32) L7 AR-1260-2	6.417	6.427	11143575	62000	15.097	0.182 #
33) L7 AR-1260-3	6.803	6.581	4032228	71856	6.152	0.261 #
34) L7 AR-1260-4	7.061	7.050	765385	70863	1.759	0.353 #
35) L7 AR-1260-5	7.304	7.274	1117267	608111	0.885	1.358 #
36) L8 AR-1262-1	6.803	6.770	4032228	2875374	3.947	7.059 #
37) L8 AR-1262-2	7.304	7.274	1117267	608111	0.682	1.186 #
38) L8 AR-1262-3	7.592	7.546	3917242	1217431	6.102	6.781
39) L8 AR-1262-4	7.664	7.646	2308102	62770	2.154	0.216 #
40) L8 AR-1262-5	8.149	8.148f	248591	55093	0.555	0.521
41) L9 AR-1268-1	7.592	7.546	3917242	1217431	2.132	2.477

Data Path : Z:\pestpcbsrv\HPCHEM1\ECD_0\Data\P0070825\
 Data File : P0112086.D
 Signal(s) : Signal #1: ECD1A.ch Signal #2: ECD2B.ch
 Acq On : 08 Jul 2025 13:32
 Operator : YP/AJ
 Sample : HEXANE
 Misc :
 ALS Vial : 1 Sample Multiplier: 1

Instrument :
 ECD_0
 ClientSampleId :
 HEXANE

Integration File signal 1: autoint1.e
 Integration File signal 2: autoint2.e
 Quant Time: Jul 09 04:03:59 2025
 Quant Method : Z:\pestpcbsrv\HPCHEM1\ECD_0\methods\P0070825.M
 Quant Title : GC EXTRACTABLES
 QLast Update : Wed Jul 09 04:02:23 2025
 Response via : Initial Calibration
 Integrator: ChemStation

Volume Inj. : 2 µl
 Signal #1 Phase : ZB-MR1 Signal #2 Phase: ZB-MR2
 Signal #1 Info : 30Mx0.32mmx 0.50µ Signal #2 Info : 30M x 0.32mm x 0.25µm

	Compound	RT#1	RT#2	Resp#1	Resp#2	ng/ml	ng/ml
42)	L9 AR-1268-2	7.664	7.646	2308102	62770	1.482	0.150 #
43)	L9 AR-1268-3	7.862	7.855	270202	-8231	0.208	N.D. #
44)	L9 AR-1268-4	8.149	8.148f	248591	55093	0.517	0.494
45)	L9 AR-1268-5	8.459	8.399	601772	55583	0.184	0.077 #

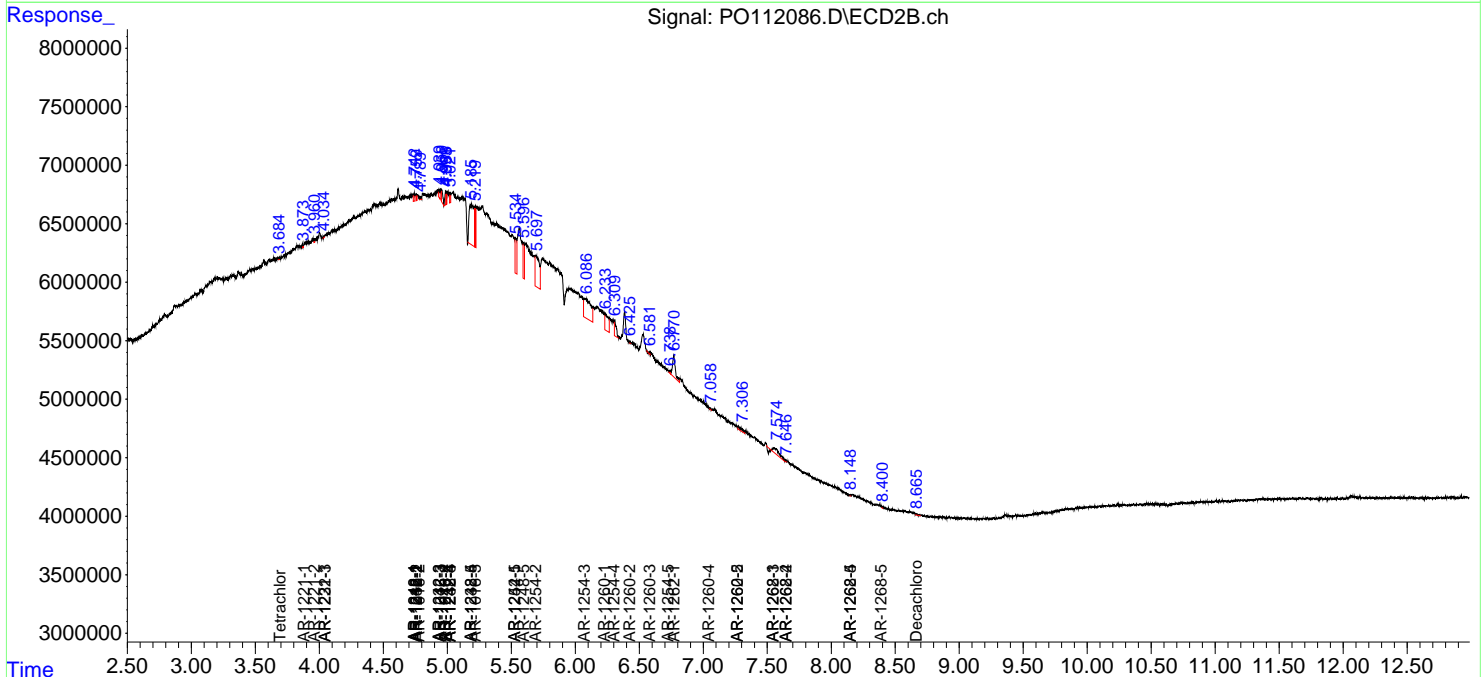
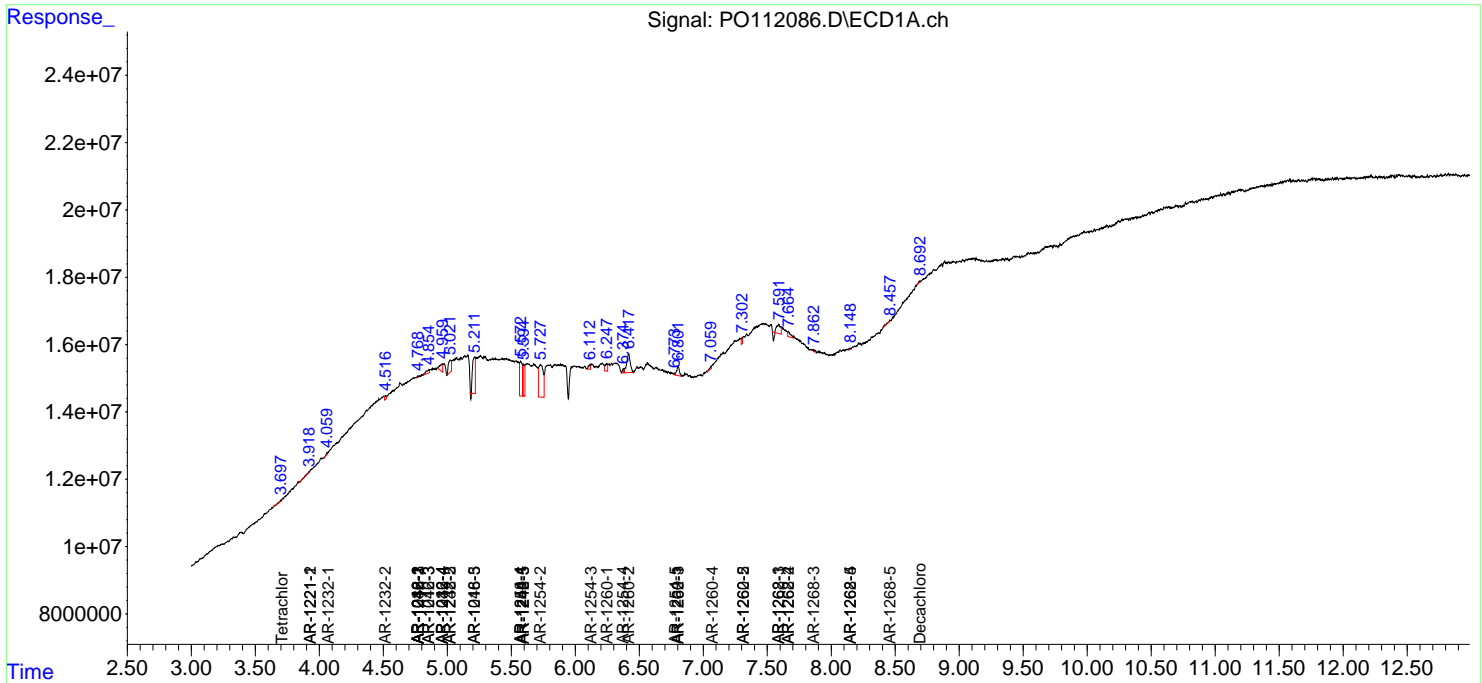
(f)=RT Delta > 1/2 Window (#)=Amounts differ by > 25% (m)=manual int.

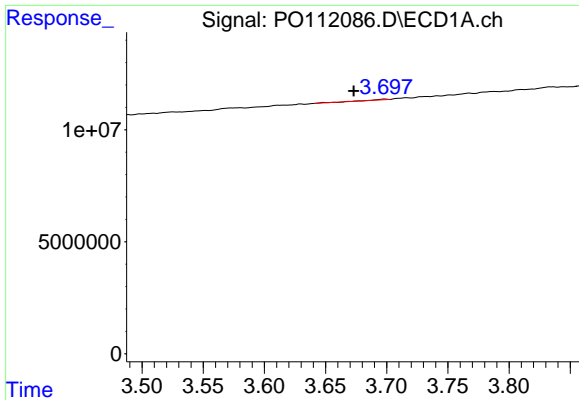
Data Path : Z:\pestpcbsrv\HPCHEM1\ECD_O\Data\PO070825\
 Data File : PO112086.D
 Signal(s) : Signal #1: ECD1A.ch Signal #2: ECD2B.ch
 Acq On : 08 Jul 2025 13:32
 Operator : YP/AJ
 Sample : HEXANE
 Misc :
 ALS Vial : 1 Sample Multiplier: 1

Instrument :
 ECD_O
ClientSampleId :
 HEXANE

Integration File signal 1: autoint1.e
 Integration File signal 2: autoint2.e
 Quant Time: Jul 09 04:03:59 2025
 Quant Method : Z:\pestpcbsrv\HPCHEM1\ECD_O\methods\PO070825.M
 Quant Title : GC EXTRACTABLES
 QLast Update : Wed Jul 09 04:02:23 2025
 Response via : Initial Calibration
 Integrator: ChemStation

Volume Inj. : 2 µl
 Signal #1 Phase : ZB-MR1 Signal #2 Phase: ZB-MR2
 Signal #1 Info : 30Mx0.32mmx 0.50µ Signal #2 Info : 30M x 0.32mm x 0.25µm

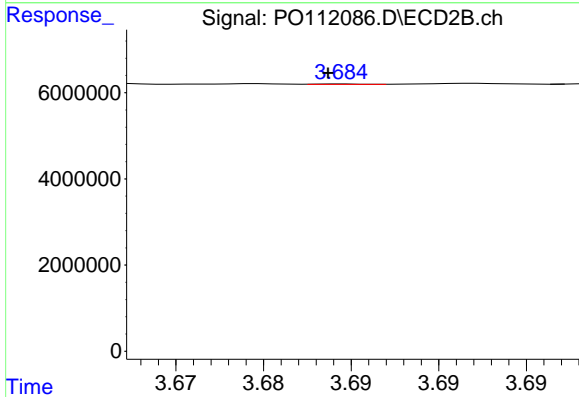




#1 Tetrachloro-m-xylene

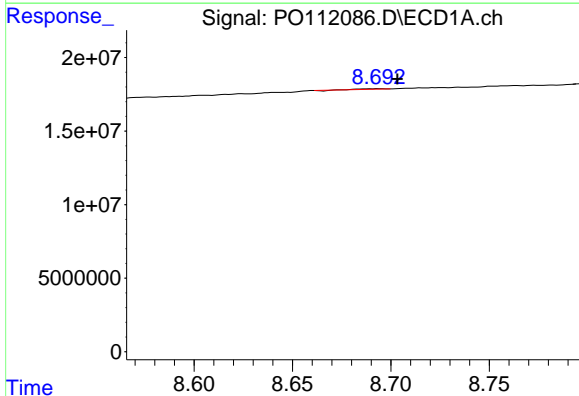
R.T.: 3.698 min
 Delta R.T.: 0.025 min
 Response: 262101
 Conc: 0.03 ng/ml

Instrument :
 ECD_O
 ClientSampleId :
 HEXANE



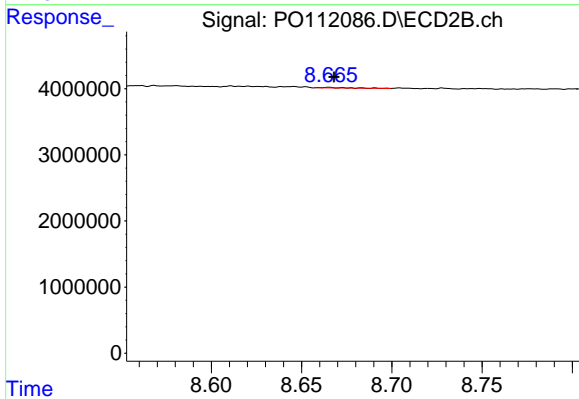
#1 Tetrachloro-m-xylene

R.T.: 3.684 min
 Delta R.T.: 0.000 min
 Response: 16933
 Conc: 0.00 ng/ml



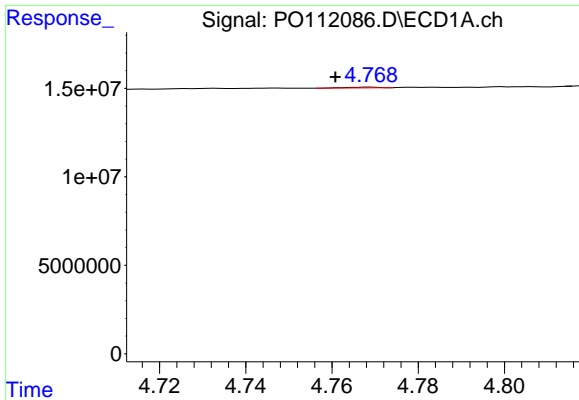
#2 Decachlorobiphenyl

R.T.: 8.694 min
 Delta R.T.: -0.009 min
 Response: 220621
 Conc: 0.03 ng/ml



#2 Decachlorobiphenyl

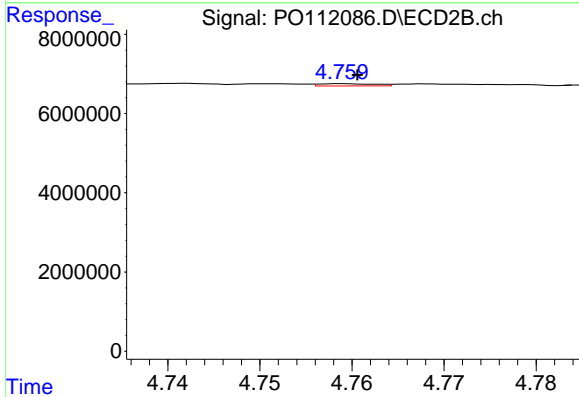
R.T.: 8.665 min
 Delta R.T.: -0.003 min
 Response: 92904
 Conc: 0.05 ng/ml



#3 AR-1016-1

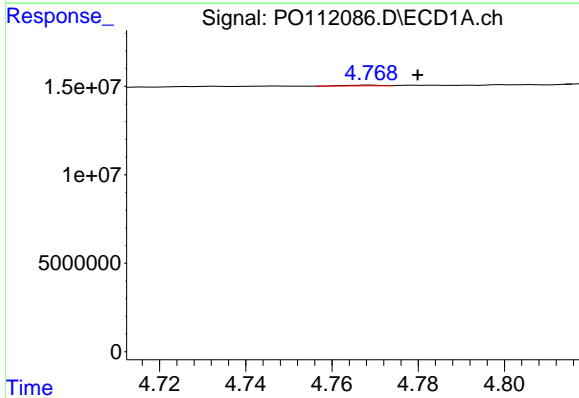
R.T.: 4.769 min
 Delta R.T.: 0.008 min
 Response: 224703
 Conc: 0.66 ng/ml

Instrument :
 ECD_O
 ClientSampleId :
 HEXANE



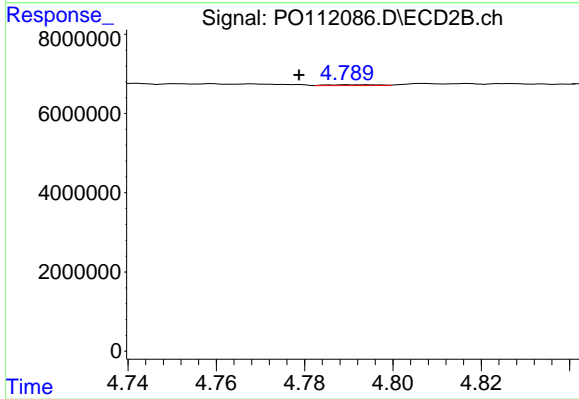
#3 AR-1016-1

R.T.: 4.759 min
 Delta R.T.: -0.002 min
 Response: 238964
 Conc: 1.07 ng/ml



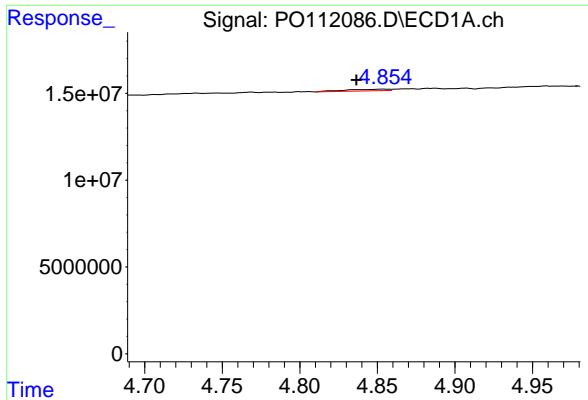
#4 AR-1016-2

R.T.: 4.769 min
 Delta R.T.: -0.011 min
 Response: 224703
 Conc: 0.45 ng/ml



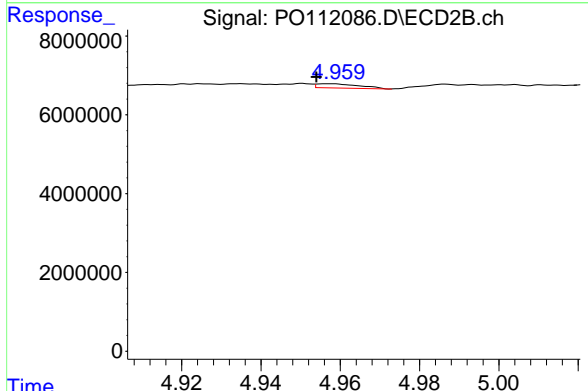
#4 AR-1016-2

R.T.: 4.789 min
 Delta R.T.: 0.011 min
 Response: 157508
 Conc: 0.48 ng/ml

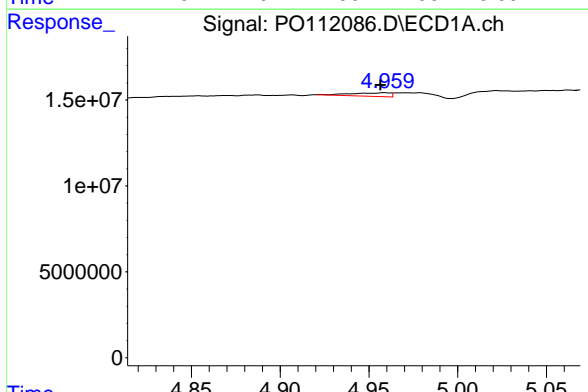


#5 AR-1016-3
 R.T.: 4.854 min
 Delta R.T.: 0.017 min
 Response: 1757576
 Conc: 5.43 ng/ml

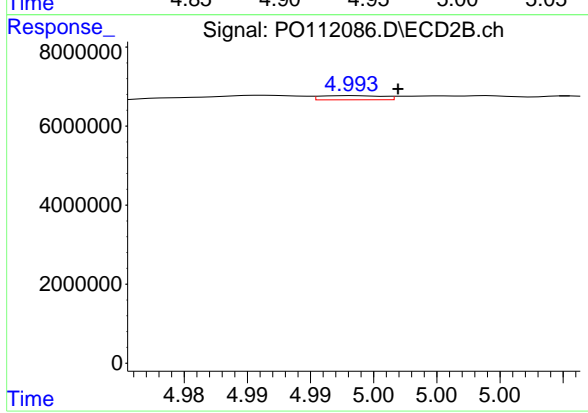
Instrument :
 ECD_O
 ClientSampleId :
 HEXANE



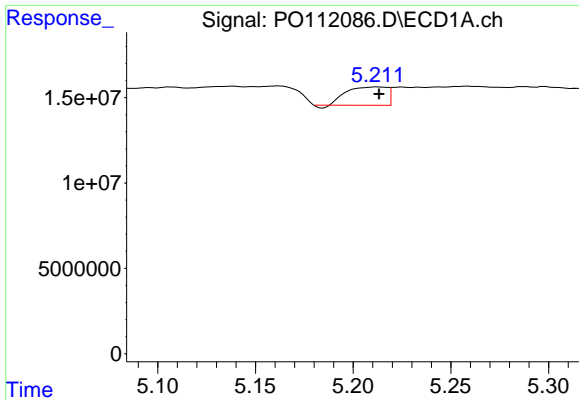
#5 AR-1016-3
 R.T.: 4.957 min
 Delta R.T.: 0.003 min
 Response: 814245
 Conc: 4.79 ng/ml



#6 AR-1016-4
 R.T.: 4.959 min
 Delta R.T.: 0.003 min
 Response: 3111893
 Conc: 12.12 ng/ml



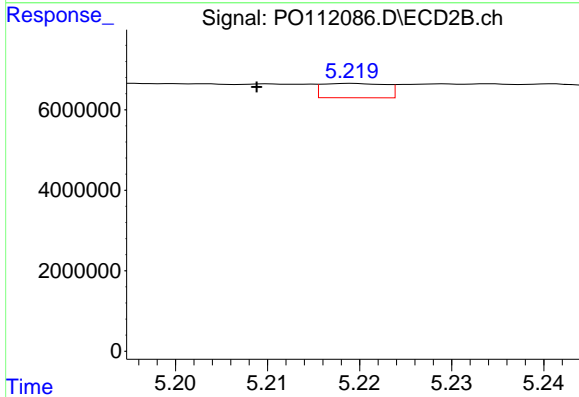
#6 AR-1016-4
 R.T.: 4.993 min
 Delta R.T.: -0.004 min
 Response: 361957
 Conc: 2.64 ng/ml



#7 AR-1016-5

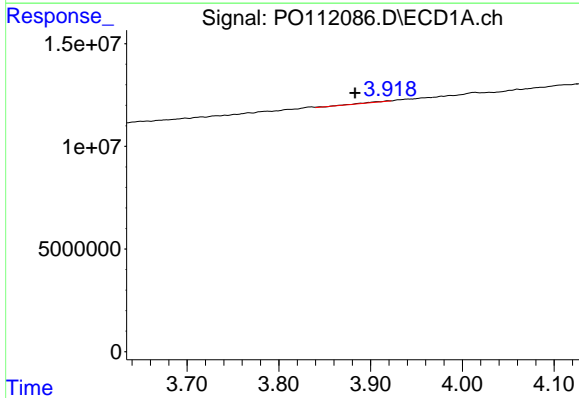
R.T.: 5.212 min
 Delta R.T.: 0.000 min
 Response: 15155349
 Conc: 55.38 ng/ml

Instrument :
 ECD_O
 ClientSampleId :
 HEXANE



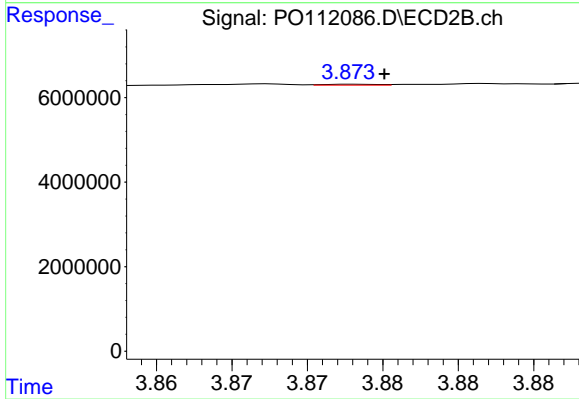
#7 AR-1016-5

R.T.: 5.219 min
 Delta R.T.: 0.010 min
 Response: 1716211
 Conc: 9.95 ng/ml



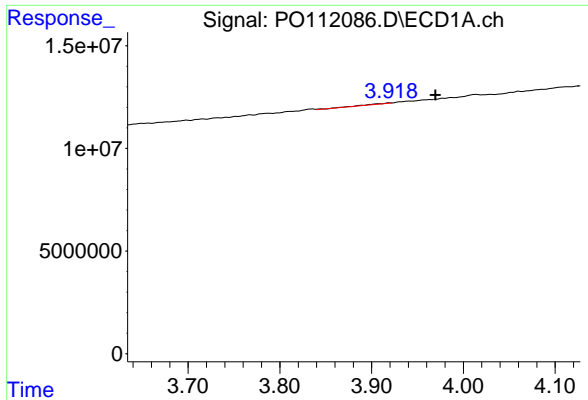
#8 AR-1221-1

R.T.: 3.919 min
 Delta R.T.: 0.036 min
 Response: 478708
 Conc: 4.11 ng/ml



#8 AR-1221-1

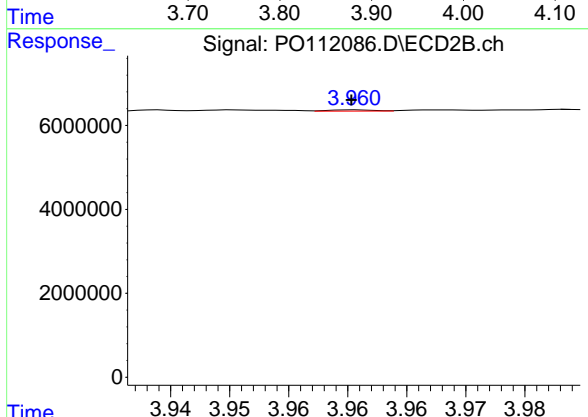
R.T.: 3.873 min
 Delta R.T.: -0.002 min
 Response: 52908
 Conc: 0.64 ng/ml



#9 AR-1221-2

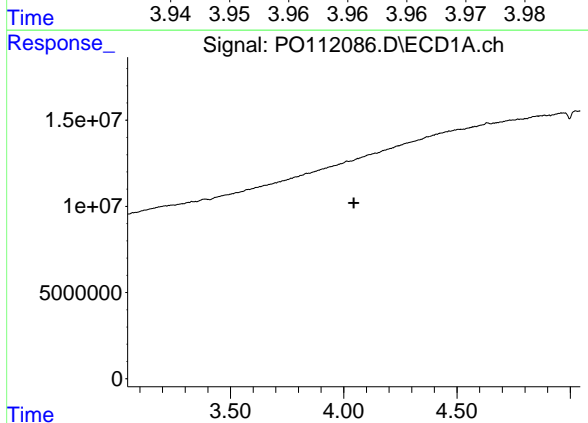
R.T.: 3.919 min
 Delta R.T.: -0.050 min
 Response: 478708
 Conc: 6.07 ng/ml

Instrument :
 ECD_O
 ClientSampleId :
 HEXANE



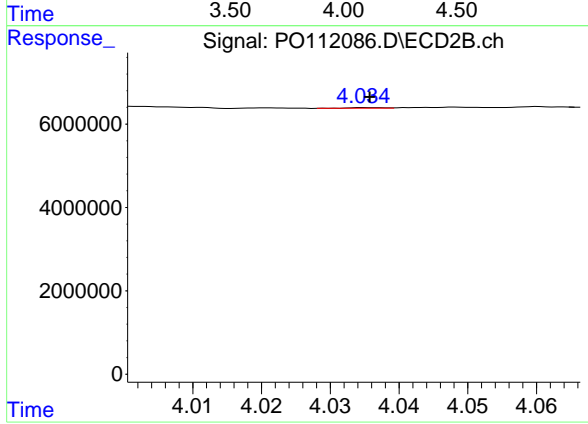
#9 AR-1221-2

R.T.: 3.961 min
 Delta R.T.: 0.000 min
 Response: 84417
 Conc: 1.42 ng/ml



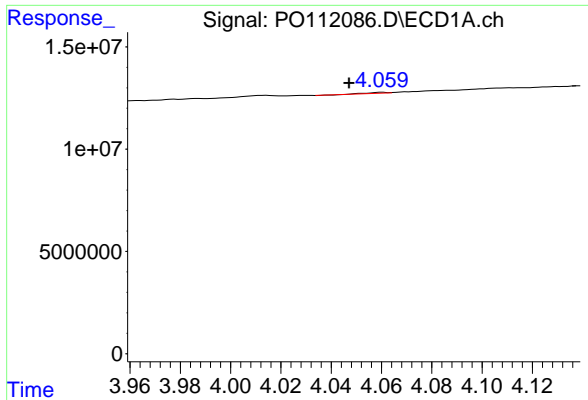
#10 AR-1221-3

R.T.: 4.030 min
 Delta R.T.: -0.015 min
 Response: -67024
 Conc: N.D.



#10 AR-1221-3

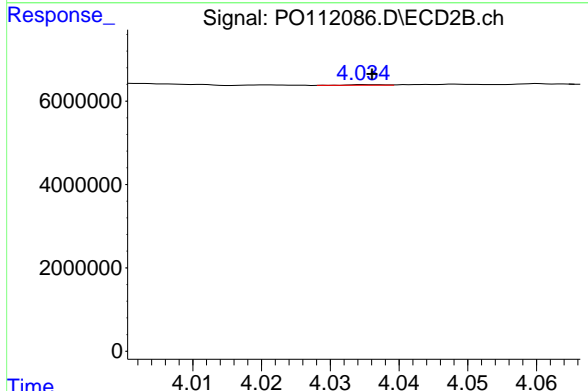
R.T.: 4.035 min
 Delta R.T.: 0.000 min
 Response: 53107
 Conc: 0.28 ng/ml



#11 AR-1232-1

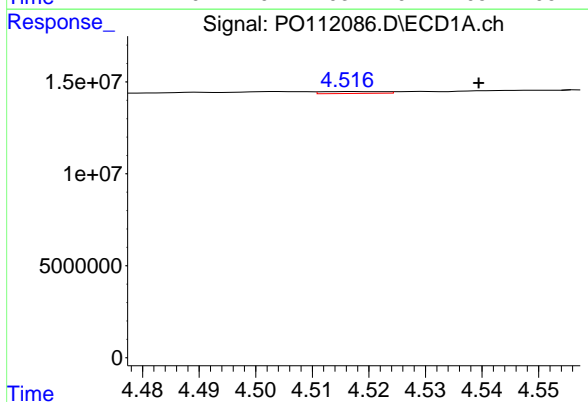
R.T.: 4.060 min
 Delta R.T.: 0.013 min
 Response: 246529
 Conc: 1.15 ng/ml

Instrument : ECD_O
 ClientSampleId : HEXANE



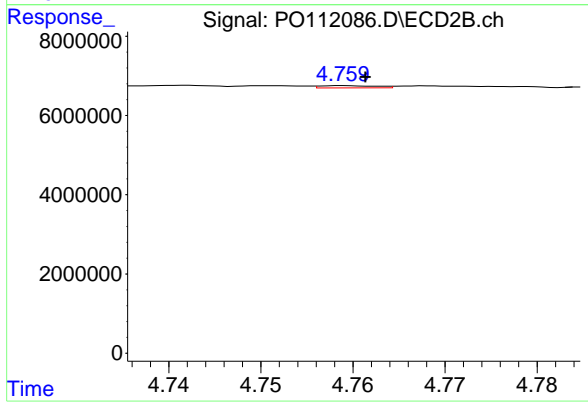
#11 AR-1232-1

R.T.: 4.035 min
 Delta R.T.: -0.001 min
 Response: 53107
 Conc: 0.35 ng/ml



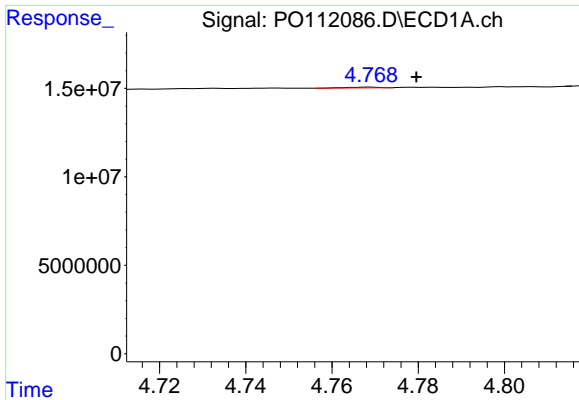
#12 AR-1232-2

R.T.: 4.517 min
 Delta R.T.: -0.022 min
 Response: 794020
 Conc: 6.99 ng/ml



#12 AR-1232-2

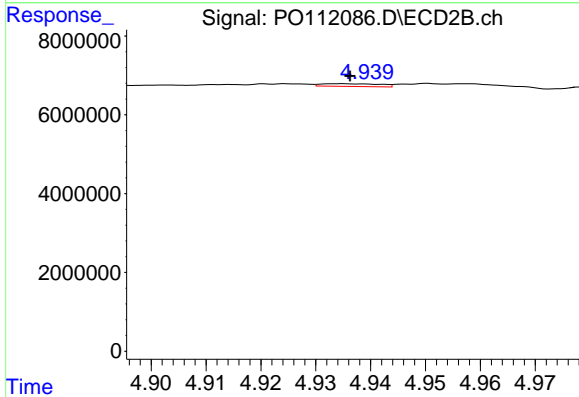
R.T.: 4.759 min
 Delta R.T.: -0.002 min
 Response: 238964
 Conc: 1.56 ng/ml



#13 AR-1232-3

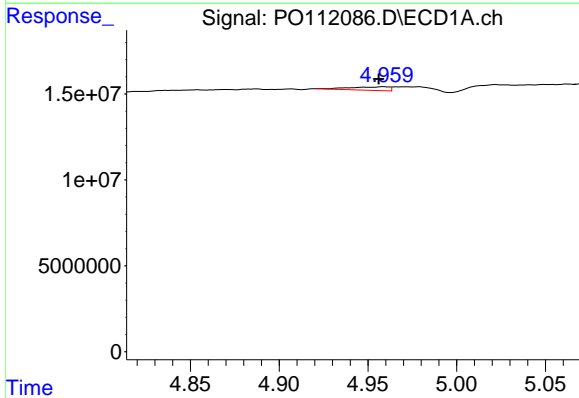
R.T.: 4.769 min
 Delta R.T.: -0.011 min
 Response: 224703
 Conc: 0.98 ng/ml

Instrument :
 ECD_O
 ClientSampleId :
 HEXANE



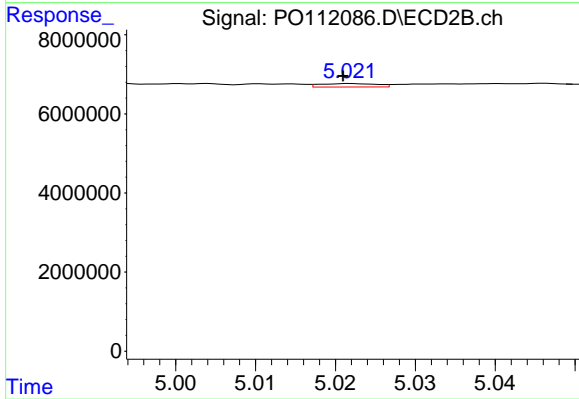
#13 AR-1232-3

R.T.: 4.935 min
 Delta R.T.: -0.002 min
 Response: 512259
 Conc: 6.78 ng/ml



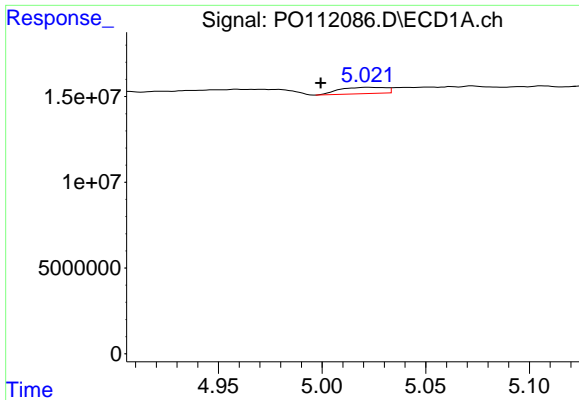
#14 AR-1232-4

R.T.: 4.959 min
 Delta R.T.: 0.003 min
 Response: 3111893
 Conc: 27.23 ng/ml



#14 AR-1232-4

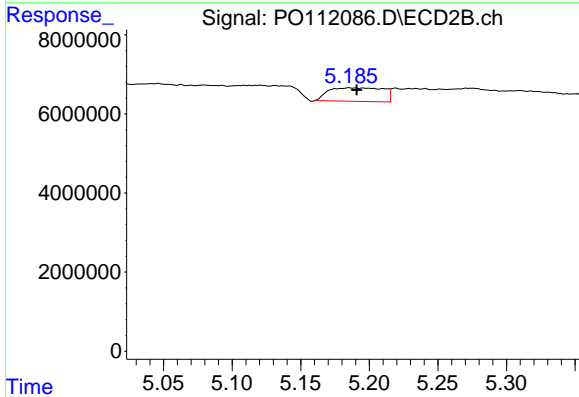
R.T.: 5.022 min
 Delta R.T.: 0.001 min
 Response: 439047
 Conc: 6.65 ng/ml



#15 AR-1232-5

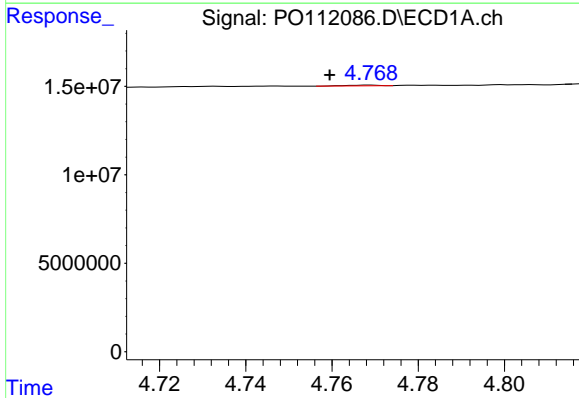
R.T.: 5.022 min
 Delta R.T.: 0.023 min
 Response: 5773398
 Conc: 78.66 ng/ml

Instrument :
 ECD_O
 ClientSampleId :
 HEXANE



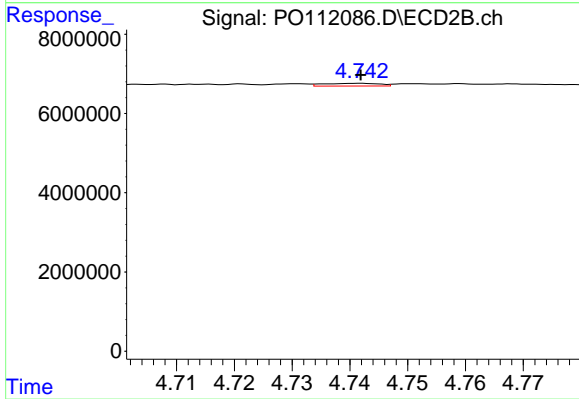
#15 AR-1232-5

R.T.: 5.185 min
 Delta R.T.: -0.006 min
 Response: 9539059
 Conc: 128.46 ng/ml



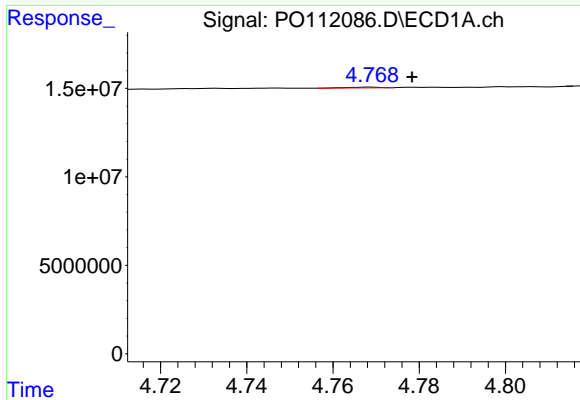
#16 AR-1242-1

R.T.: 4.769 min
 Delta R.T.: 0.010 min
 Response: 224703
 Conc: 0.78 ng/ml



#16 AR-1242-1

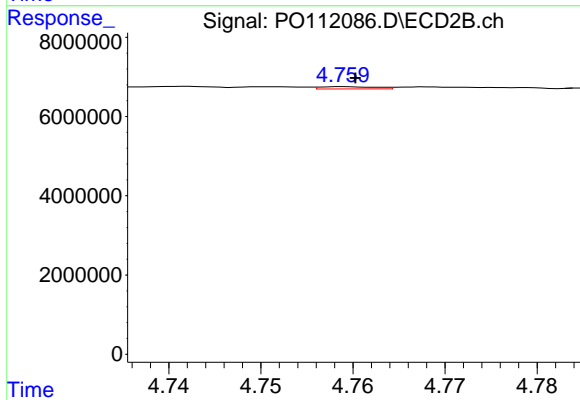
R.T.: 4.742 min
 Delta R.T.: 0.000 min
 Response: 472909
 Conc: 2.44 ng/ml



#17 AR-1242-2

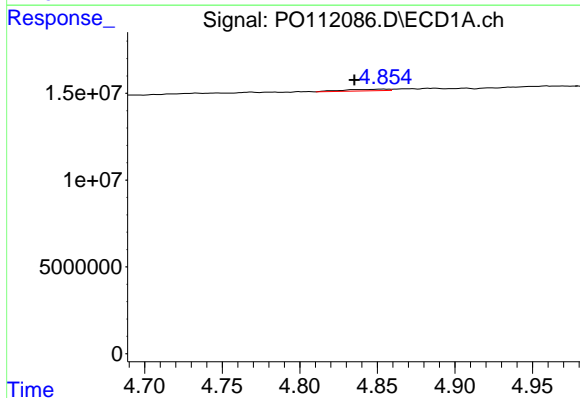
R.T.: 4.769 min
 Delta R.T.: -0.009 min
 Response: 224703
 Conc: 0.53 ng/ml

Instrument :
 ECD_O
 ClientSampleId :
 HEXANE



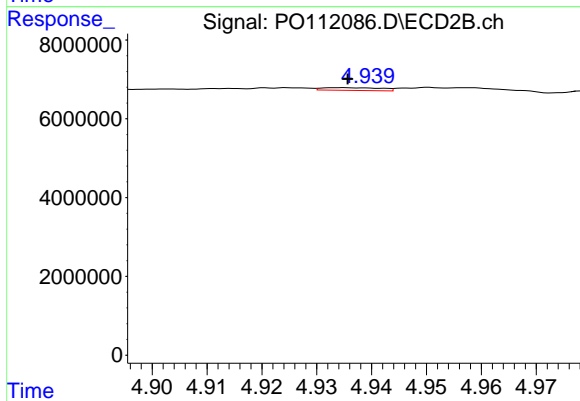
#17 AR-1242-2

R.T.: 4.759 min
 Delta R.T.: -0.001 min
 Response: 238964
 Conc: 0.84 ng/ml



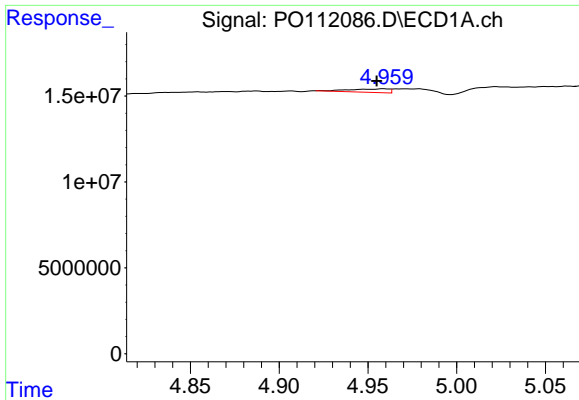
#18 AR-1242-3

R.T.: 4.854 min
 Delta R.T.: 0.019 min
 Response: 1757576
 Conc: 6.42 ng/ml



#18 AR-1242-3

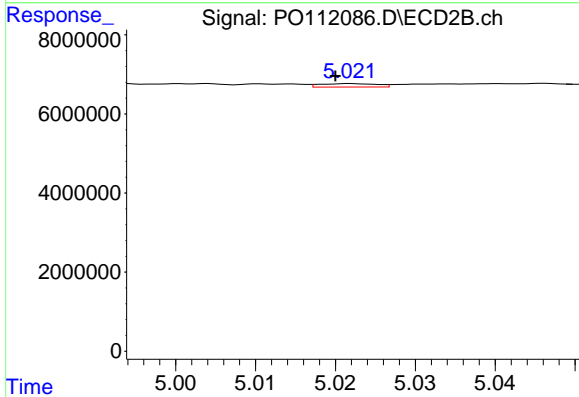
R.T.: 4.935 min
 Delta R.T.: 0.000 min
 Response: 512259
 Conc: 3.52 ng/ml



#19 AR-1242-4

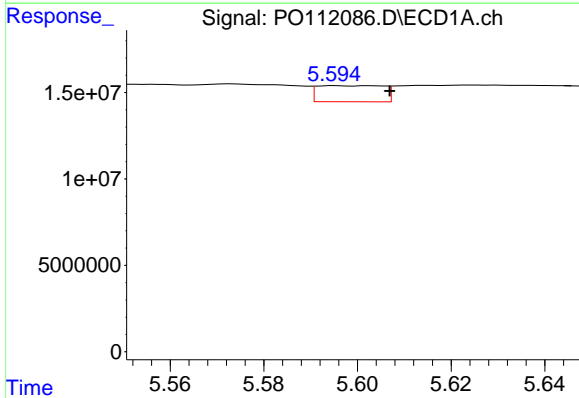
R.T.: 4.959 min
 Delta R.T.: 0.004 min
 Response: 3111893
 Conc: 13.81 ng/ml

Instrument :
 ECD_O
 ClientSampleId :
 HEXANE



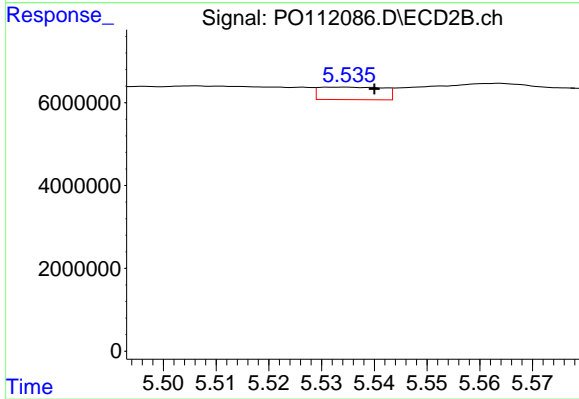
#19 AR-1242-4

R.T.: 5.022 min
 Delta R.T.: 0.002 min
 Response: 439047
 Conc: 3.10 ng/ml



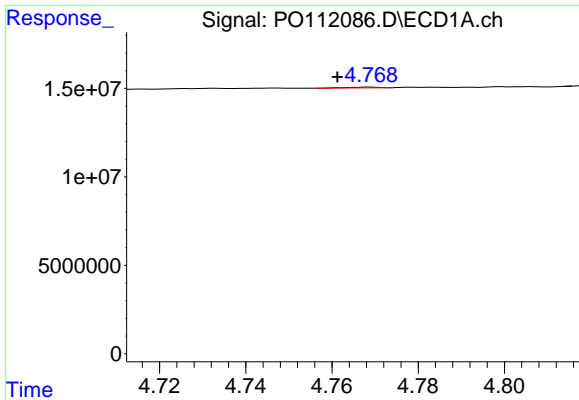
#20 AR-1242-5

R.T.: 5.595 min
 Delta R.T.: -0.011 min
 Response: 9105293
 Conc: 43.02 ng/ml



#20 AR-1242-5

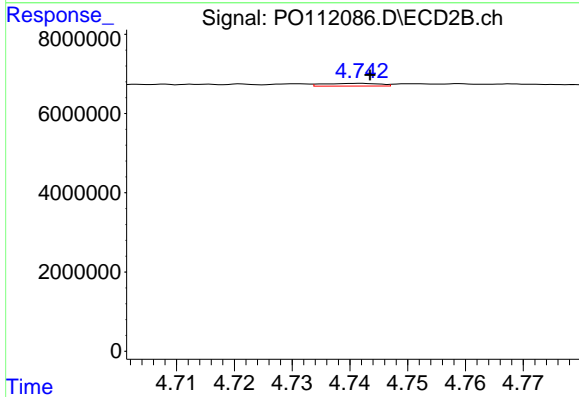
R.T.: 5.534 min
 Delta R.T.: -0.006 min
 Response: 2549716
 Conc: 14.03 ng/ml



#21 AR-1248-1

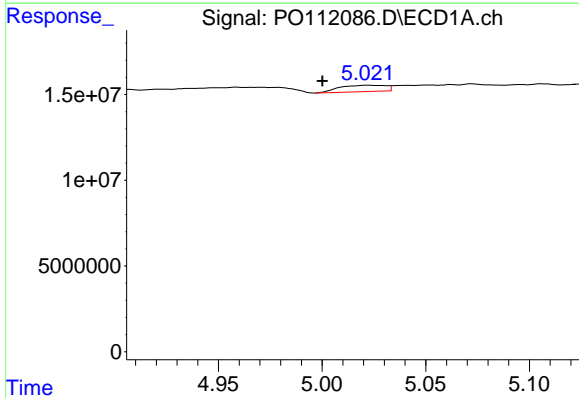
R.T.: 4.769 min
 Delta R.T.: 0.008 min
 Response: 224703
 Conc: 0.99 ng/ml

Instrument :
 ECD_O
 ClientSampleId :
 HEXANE



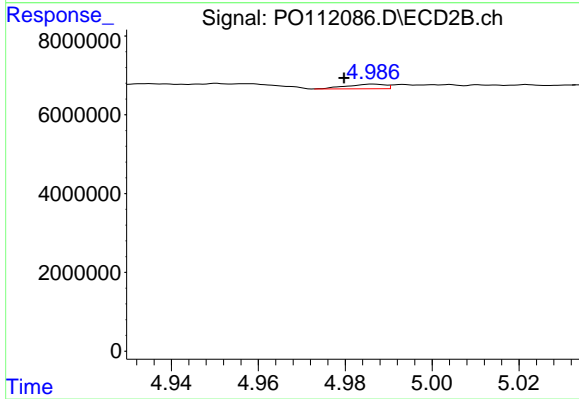
#21 AR-1248-1

R.T.: 4.742 min
 Delta R.T.: -0.002 min
 Response: 472909
 Conc: 3.06 ng/ml



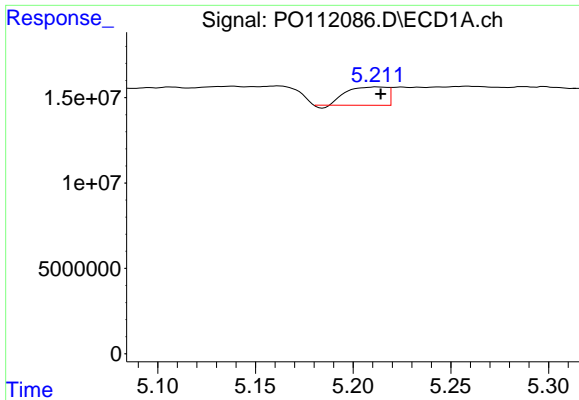
#22 AR-1248-2

R.T.: 5.022 min
 Delta R.T.: 0.022 min
 Response: 5773398
 Conc: 18.73 ng/ml



#22 AR-1248-2

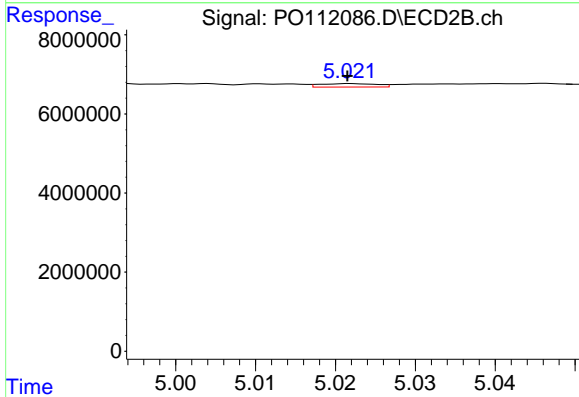
R.T.: 4.986 min
 Delta R.T.: 0.007 min
 Response: 719758
 Conc: 3.50 ng/ml



#23 AR-1248-3

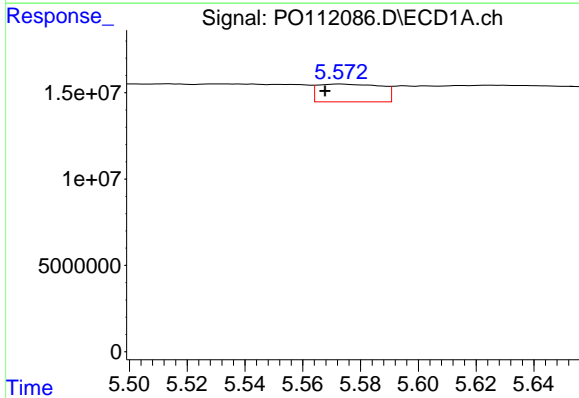
R.T.: 5.212 min
 Delta R.T.: -0.002 min
 Response: 15155349
 Conc: 37.21 ng/ml

Instrument :
 ECD_O
 ClientSampleId :
 HEXANE



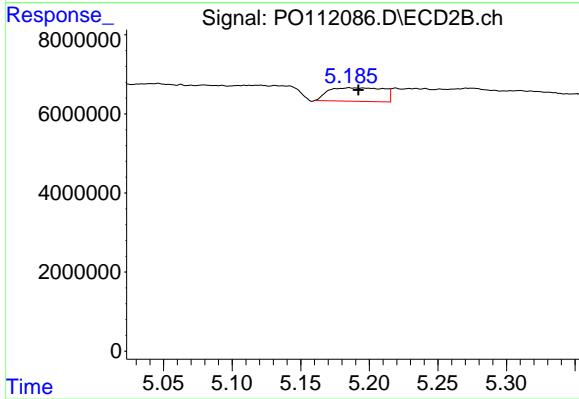
#23 AR-1248-3

R.T.: 5.022 min
 Delta R.T.: 0.000 min
 Response: 439047
 Conc: 2.04 ng/ml



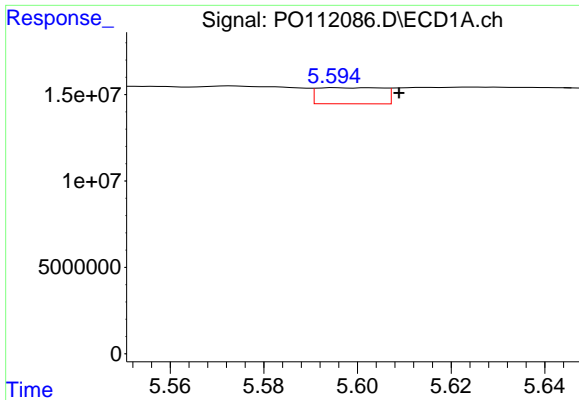
#24 AR-1248-4

R.T.: 5.573 min
 Delta R.T.: 0.005 min
 Response: 15665215
 Conc: 27.14 ng/ml



#24 AR-1248-4

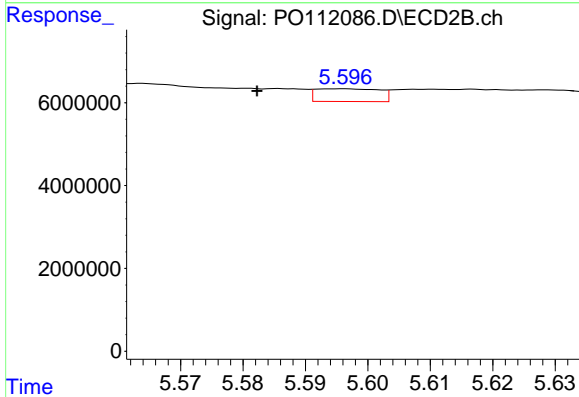
R.T.: 5.185 min
 Delta R.T.: -0.007 min
 Response: 9539059
 Conc: 36.87 ng/ml



#25 AR-1248-5

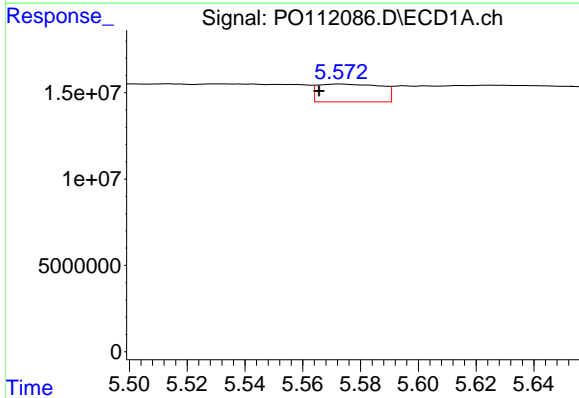
R.T.: 5.595 min
 Delta R.T.: -0.013 min
 Response: 9105293
 Conc: 23.33 ng/ml

Instrument :
 ECD_O
 ClientSampleId :
 HEXANE



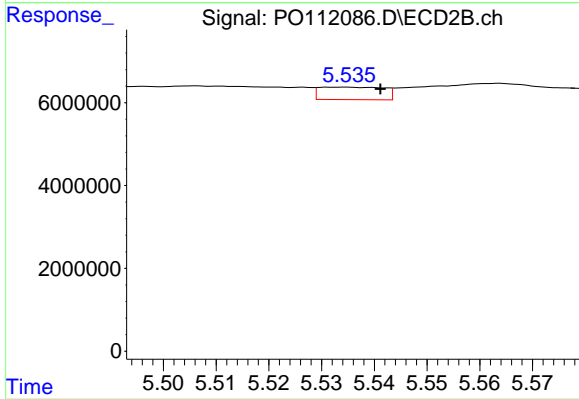
#25 AR-1248-5

R.T.: 5.596 min
 Delta R.T.: 0.013 min
 Response: 2173400
 Conc: 8.67 ng/ml



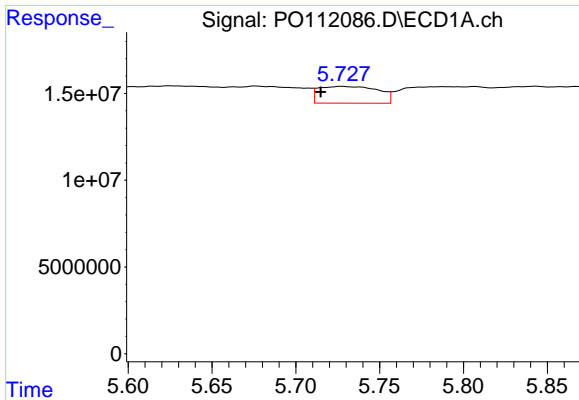
#26 AR-1254-1

R.T.: 5.573 min
 Delta R.T.: 0.007 min
 Response: 15665215
 Conc: 25.47 ng/ml



#26 AR-1254-1

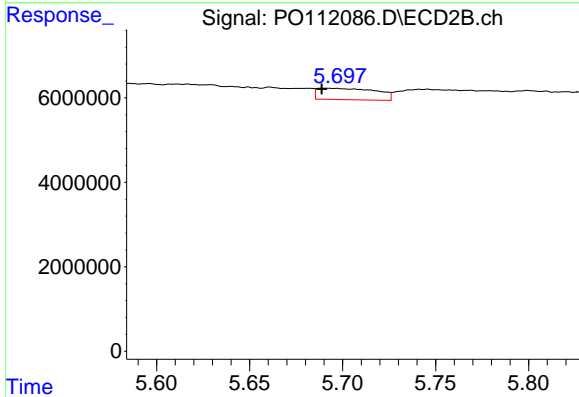
R.T.: 5.534 min
 Delta R.T.: -0.007 min
 Response: 2549716
 Conc: 6.69 ng/ml



#27 AR-1254-2

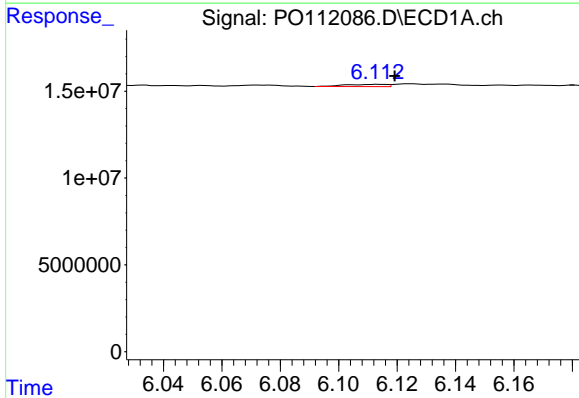
R.T.: 5.728 min
 Delta R.T.: 0.013 min
 Response: 23851252
 Conc: 44.52 ng/ml

Instrument :
 ECD_O
 ClientSampleId :
 HEXANE



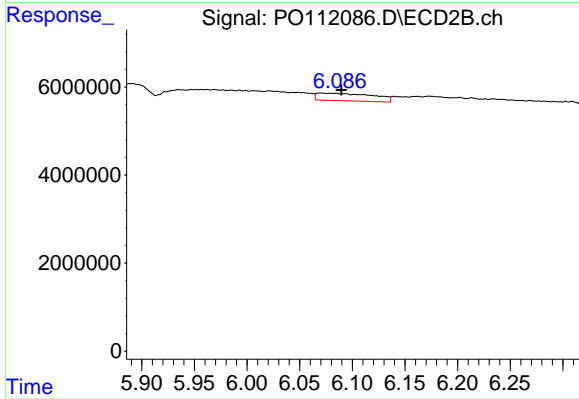
#27 AR-1254-2

R.T.: 5.691 min
 Delta R.T.: 0.002 min
 Response: 5922508
 Conc: 17.85 ng/ml



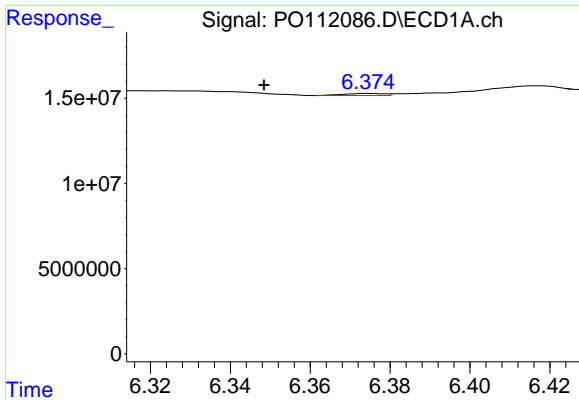
#28 AR-1254-3

R.T.: 6.114 min
 Delta R.T.: -0.005 min
 Response: 1267259
 Conc: 1.51 ng/ml



#28 AR-1254-3

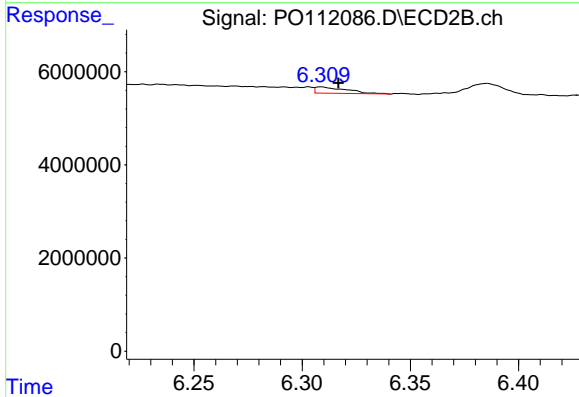
R.T.: 6.070 min
 Delta R.T.: -0.020 min
 Response: 6330483
 Conc: 13.13 ng/ml



#29 AR-1254-4

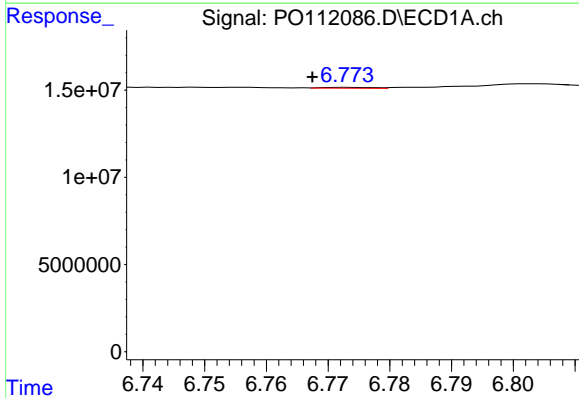
R.T.: 6.375 min
 Delta R.T.: 0.026 min
 Response: 832237
 Conc: 1.73 ng/ml

Instrument :
 ECD_O
 ClientSampleId :
 HEXANE



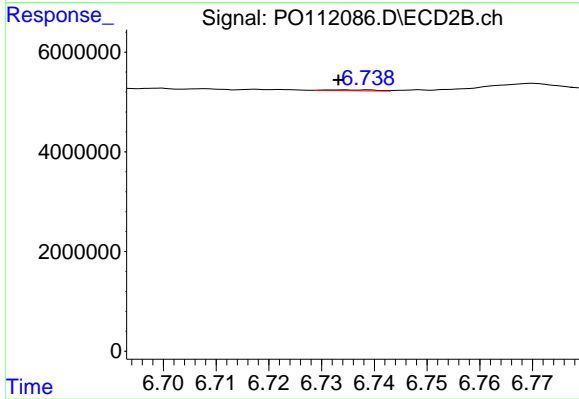
#29 AR-1254-4

R.T.: 6.309 min
 Delta R.T.: -0.008 min
 Response: 1333711
 Conc: 5.12 ng/ml



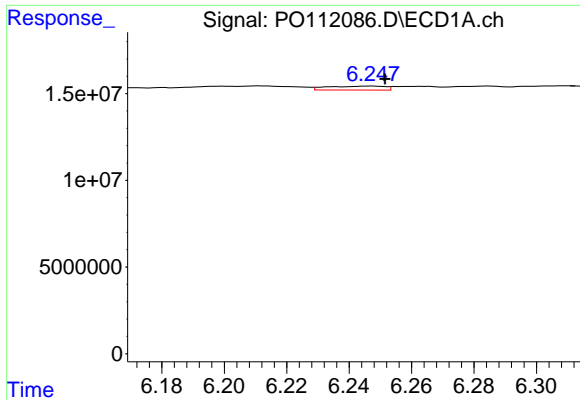
#30 AR-1254-5

R.T.: 6.773 min
 Delta R.T.: 0.006 min
 Response: 279152
 Conc: 0.36 ng/ml



#30 AR-1254-5

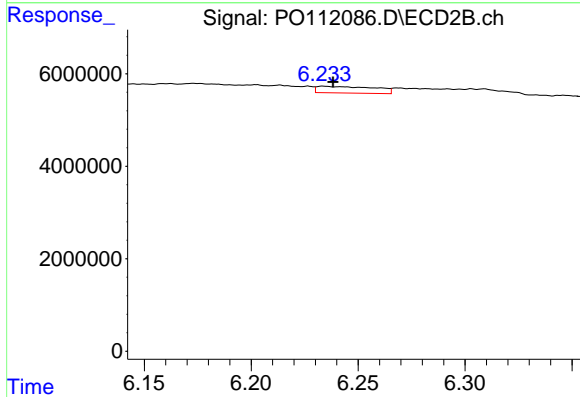
R.T.: 6.734 min
 Delta R.T.: 0.000 min
 Response: 119589
 Conc: 0.34 ng/ml



#31 AR-1260-1

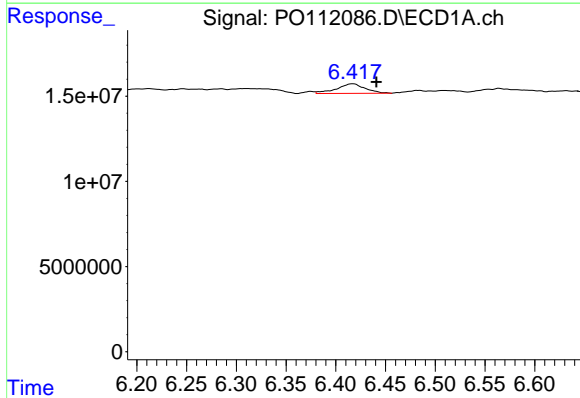
R.T.: 6.247 min
 Delta R.T.: -0.005 min
 Response: 2872630
 Conc: 5.73 ng/ml

Instrument :
 ECD_O
 ClientSampleId :
 HEXANE



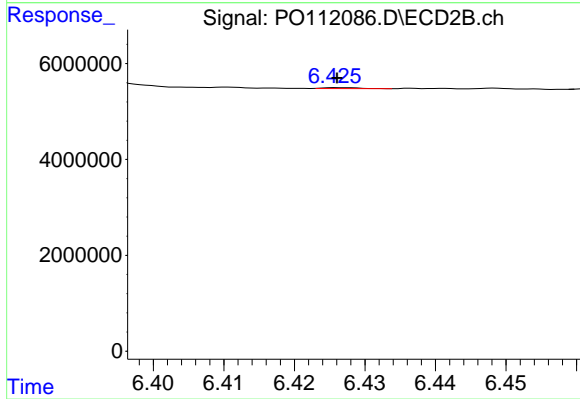
#31 AR-1260-1

R.T.: 6.234 min
 Delta R.T.: -0.004 min
 Response: 2681422
 Conc: 9.56 ng/ml



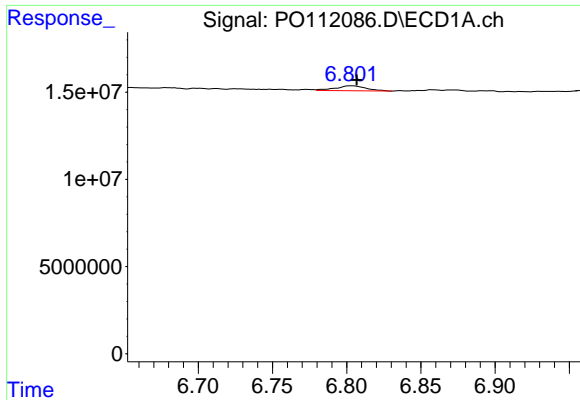
#32 AR-1260-2

R.T.: 6.417 min
 Delta R.T.: -0.024 min
 Response: 11143575
 Conc: 15.10 ng/ml



#32 AR-1260-2

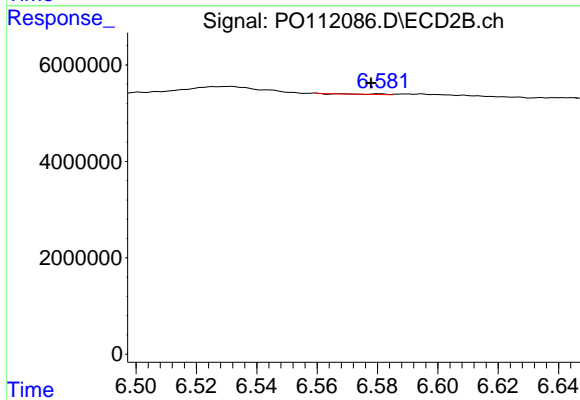
R.T.: 6.427 min
 Delta R.T.: 0.000 min
 Response: 62000
 Conc: 0.18 ng/ml



#33 AR-1260-3

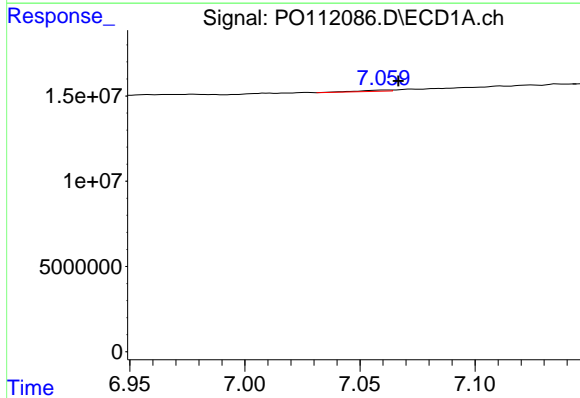
R.T.: 6.803 min
 Delta R.T.: -0.004 min
 Response: 4032228
 Conc: 6.15 ng/ml

Instrument :
 ECD_O
 ClientSampleId :
 HEXANE



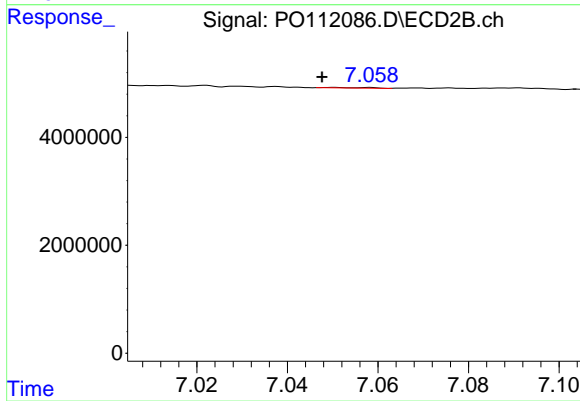
#33 AR-1260-3

R.T.: 6.581 min
 Delta R.T.: 0.003 min
 Response: 71856
 Conc: 0.26 ng/ml



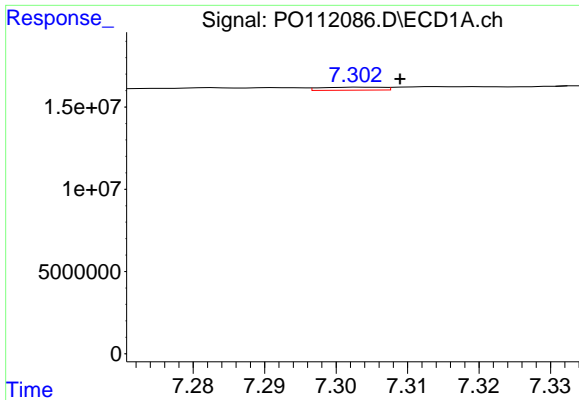
#34 AR-1260-4

R.T.: 7.061 min
 Delta R.T.: -0.006 min
 Response: 765385
 Conc: 1.76 ng/ml



#34 AR-1260-4

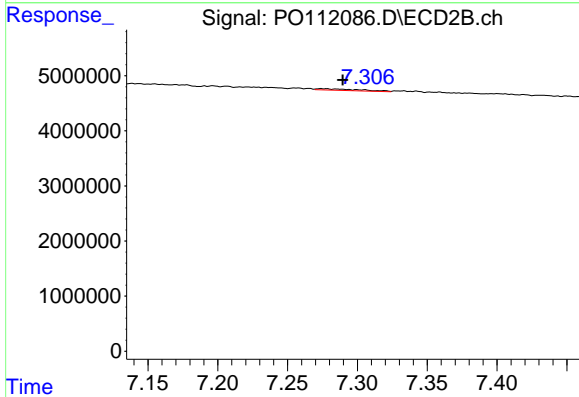
R.T.: 7.050 min
 Delta R.T.: 0.003 min
 Response: 70863
 Conc: 0.35 ng/ml



#35 AR-1260-5

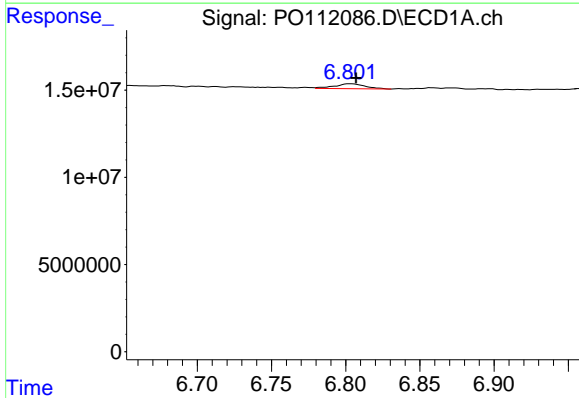
R.T.: 7.304 min
 Delta R.T.: -0.005 min
 Response: 1117267
 Conc: 0.88 ng/ml

Instrument :
 ECD_O
 ClientSampleId :
 HEXANE



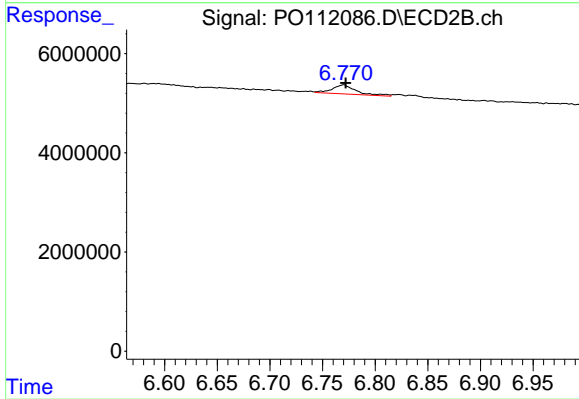
#35 AR-1260-5

R.T.: 7.274 min
 Delta R.T.: -0.015 min
 Response: 608111
 Conc: 1.36 ng/ml



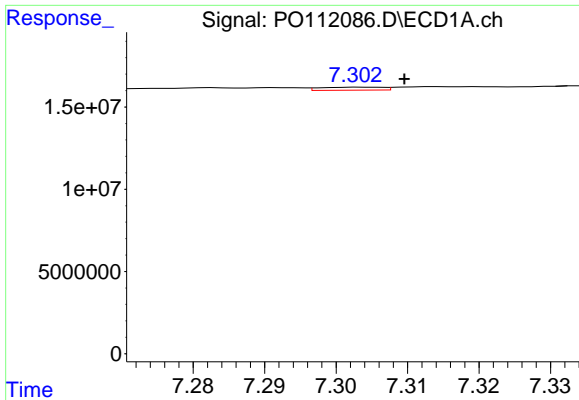
#36 AR-1262-1

R.T.: 6.803 min
 Delta R.T.: -0.004 min
 Response: 4032228
 Conc: 3.95 ng/ml



#36 AR-1262-1

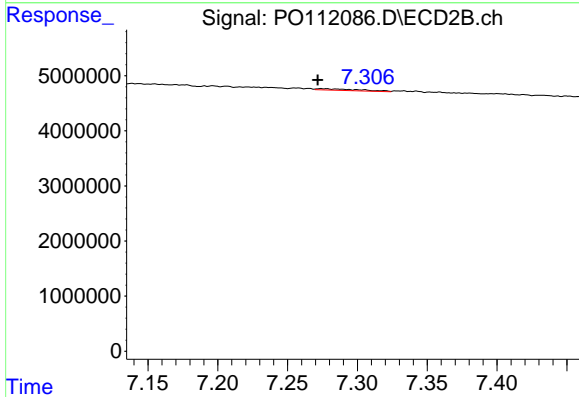
R.T.: 6.770 min
 Delta R.T.: -0.002 min
 Response: 2875374
 Conc: 7.06 ng/ml



#37 AR-1262-2

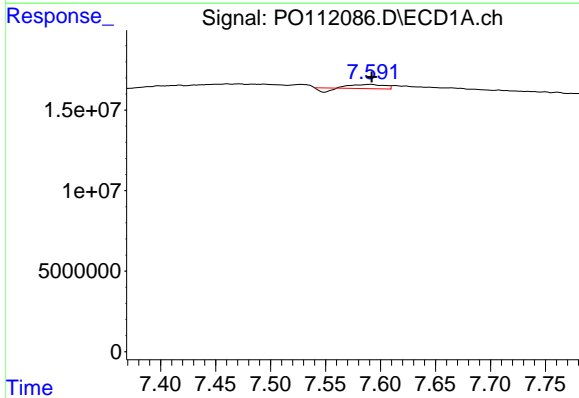
R.T.: 7.304 min
 Delta R.T.: -0.005 min
 Response: 1117267
 Conc: 0.68 ng/ml

Instrument :
 ECD_O
 ClientSampleId :
 HEXANE



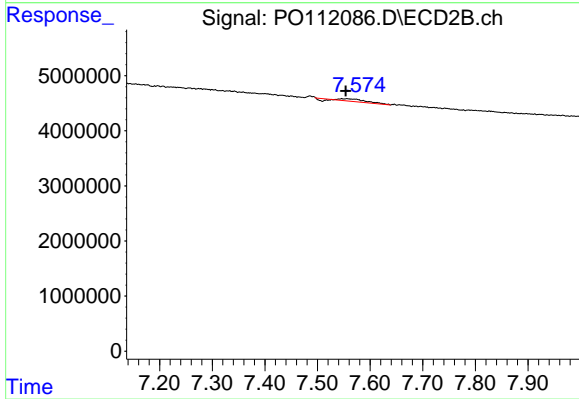
#37 AR-1262-2

R.T.: 7.274 min
 Delta R.T.: 0.003 min
 Response: 608111
 Conc: 1.19 ng/ml



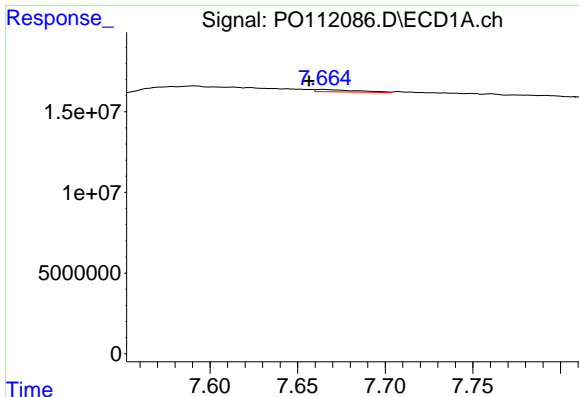
#38 AR-1262-3

R.T.: 7.592 min
 Delta R.T.: 0.000 min
 Response: 3917242
 Conc: 6.10 ng/ml



#38 AR-1262-3

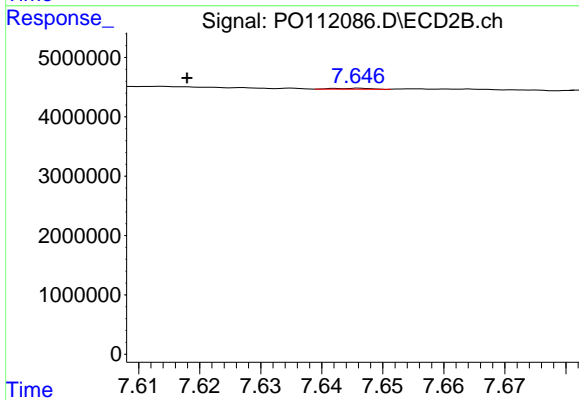
R.T.: 7.546 min
 Delta R.T.: -0.008 min
 Response: 1217431
 Conc: 6.78 ng/ml



#39 AR-1262-4

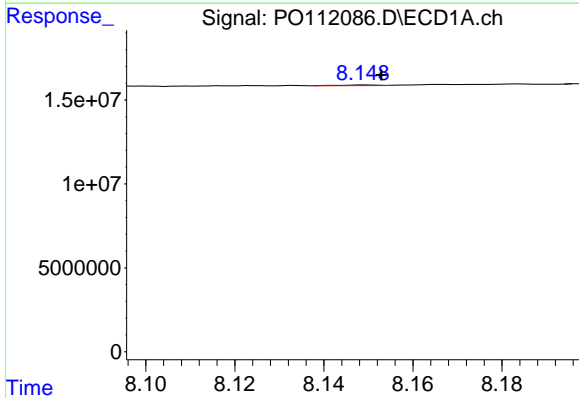
R.T.: 7.664 min
 Delta R.T.: 0.008 min
 Response: 2308102
 Conc: 2.15 ng/ml

Instrument :
 ECD_O
 ClientSampleId :
 HEXANE



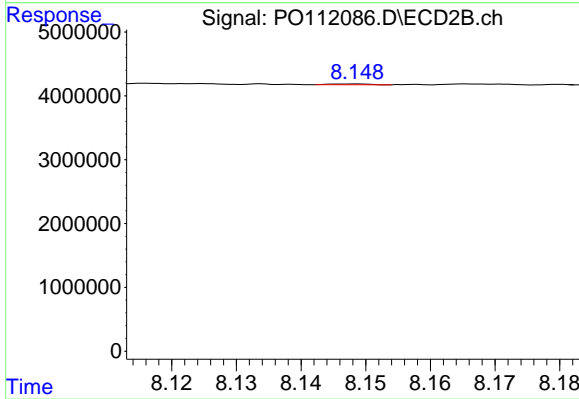
#39 AR-1262-4

R.T.: 7.646 min
 Delta R.T.: 0.028 min
 Response: 62770
 Conc: 0.22 ng/ml



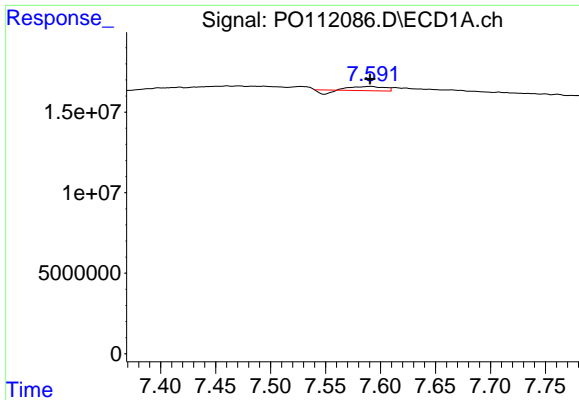
#40 AR-1262-5

R.T.: 8.149 min
 Delta R.T.: -0.004 min
 Response: 248591
 Conc: 0.55 ng/ml



#40 AR-1262-5

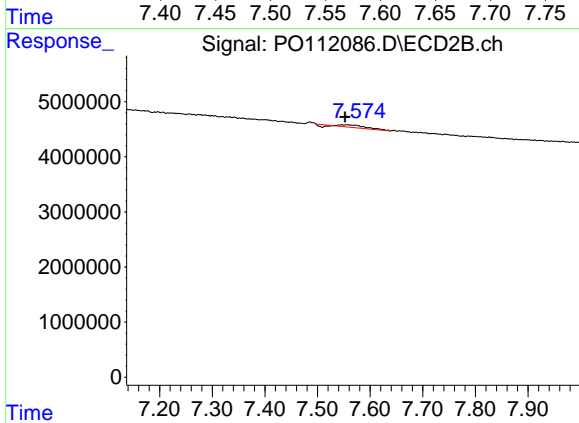
R.T.: 8.148 min
 Delta R.T.: 0.038 min
 Response: 55093
 Conc: 0.52 ng/ml



#41 AR-1268-1

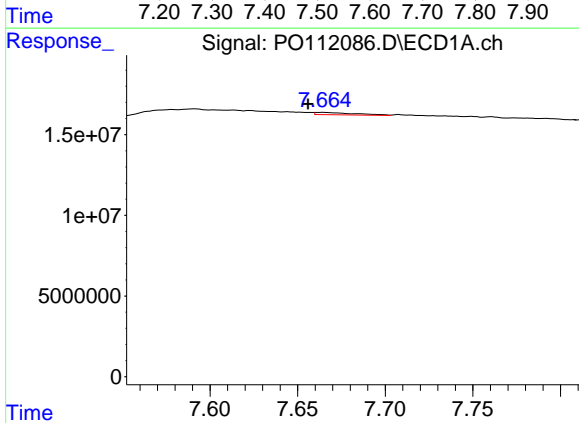
R.T.: 7.592 min
 Delta R.T.: 0.001 min
 Response: 3917242
 Conc: 2.13 ng/ml

Instrument :
 ECD_O
 ClientSampleId :
 HEXANE



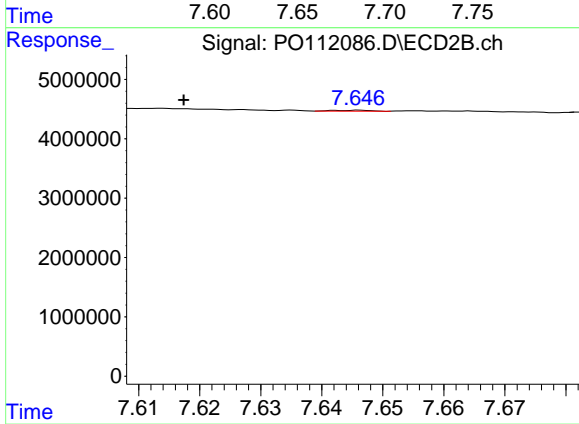
#41 AR-1268-1

R.T.: 7.546 min
 Delta R.T.: -0.006 min
 Response: 1217431
 Conc: 2.48 ng/ml



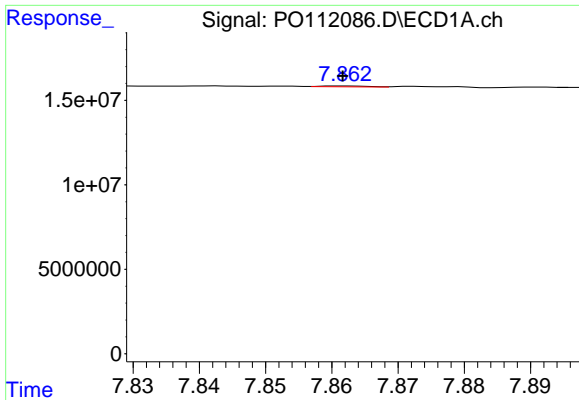
#42 AR-1268-2

R.T.: 7.664 min
 Delta R.T.: 0.008 min
 Response: 2308102
 Conc: 1.48 ng/ml



#42 AR-1268-2

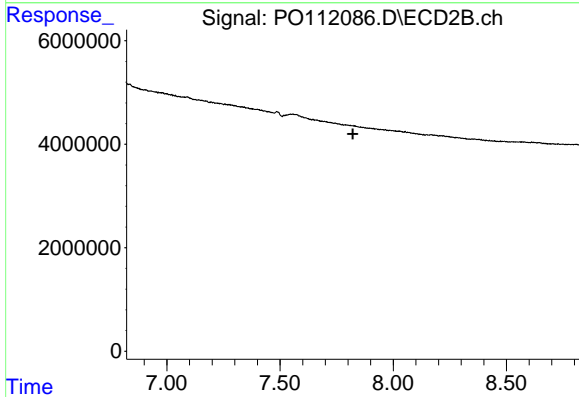
R.T.: 7.646 min
 Delta R.T.: 0.029 min
 Response: 62770
 Conc: 0.15 ng/ml



#43 AR-1268-3

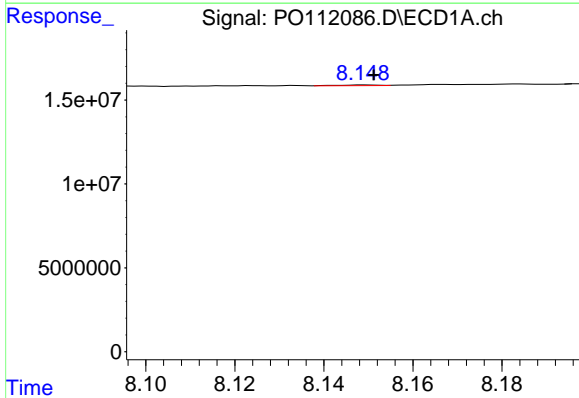
R.T.: 7.862 min
 Delta R.T.: 0.000 min
 Response: 270202
 Conc: 0.21 ng/ml

Instrument :
 ECD_O
 ClientSampleId :
 HEXANE



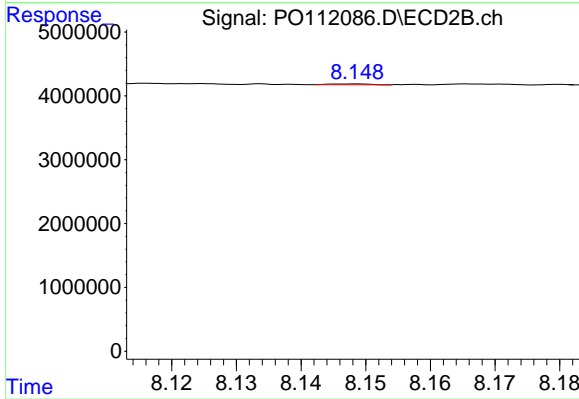
#43 AR-1268-3

R.T.: 7.855 min
 Delta R.T.: 0.034 min
 Response: -8231
 Conc: N.D.



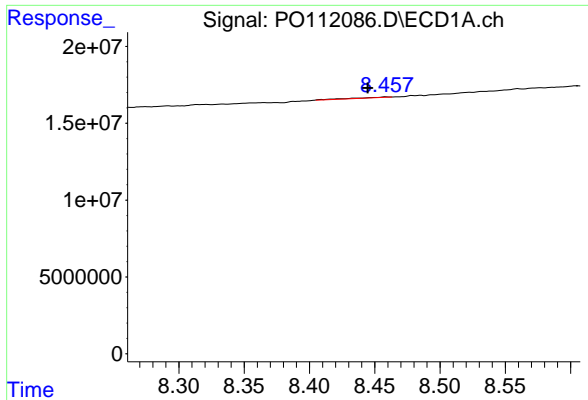
#44 AR-1268-4

R.T.: 8.149 min
 Delta R.T.: -0.002 min
 Response: 248591
 Conc: 0.52 ng/ml



#44 AR-1268-4

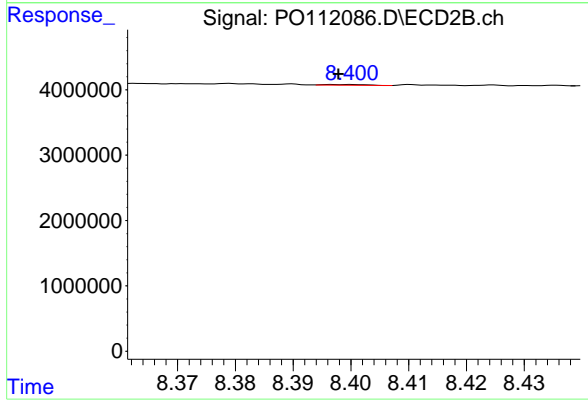
R.T.: 8.148 min
 Delta R.T.: 0.040 min
 Response: 55093
 Conc: 0.49 ng/ml



#45 AR-1268-5

R.T.: 8.459 min
 Delta R.T.: 0.014 min
 Response: 601772
 Conc: 0.18 ng/ml

Instrument :
 ECD_O
 ClientSampleId :
 HEXANE



#45 AR-1268-5

R.T.: 8.399 min
 Delta R.T.: 0.002 min
 Response: 55583
 Conc: 0.08 ng/ml