

Data Path : Z:\pestpcbsrv\HPCHEM1\ECD_0\Data\P0070825\
 Data File : PO112088.D
 Signal(s) : Signal #1: ECD1A.ch Signal #2: ECD2B.ch
 Acq On : 08 Jul 2025 14:06
 Operator : YP/AJ
 Sample : AR1660ICC1000
 Misc :
 ALS Vial : 3 Sample Multiplier: 1

Instrument :
 ECD_0
 ClientSampleId :
 AR1660ICC1000

Integration File signal 1: autoint1.e
 Integration File signal 2: autoint2.e
 Quant Time: Jul 08 15:11:12 2025
 Quant Method : Z:\pestpcbsrv\HPCHEM1\ECD_0\methods\P0070825.M
 Quant Title : GC EXTRACTABLES
 QLast Update : Tue Jul 08 15:05:13 2025
 Response via : Initial Calibration
 Integrator: ChemStation

Volume Inj. : 2 µl
 Signal #1 Phase : ZB-MR1 Signal #2 Phase: ZB-MR2
 Signal #1 Info : 30Mx0.32mmx 0.50µ Signal #2 Info : 30M x 0.32mm x 0.25µm

Compound	RT#1	RT#2	Resp#1	Resp#2	ng/ml	ng/ml

System Monitoring Compounds						
1) SA Tetrachlo...	3.671	3.666	1065.4E6	678.6E6	100.030	99.492
2) SA Decachlor...	8.702	8.650	709.2E6	145.2E6	99.363	82.863
Target Compounds						
3) L1 AR-1016-1	4.759	4.743	360.7E6	224.7E6	1002.967	1009.911
4) L1 AR-1016-2	4.777	4.761	524.8E6	333.7E6	997.596	990.816
5) L1 AR-1016-3	4.834	4.937	332.8E6	170.0E6	996.764	978.505
6) L1 AR-1016-4	4.954	4.980	267.1E6	133.5E6	996.410	973.937
7) L1 AR-1016-5	5.211	5.191	281.3E6	173.0E6	1001.444	970.770
31) L7 AR-1260-1	6.249	6.220	515.3E6	274.0E6	991.090	981.321
32) L7 AR-1260-2	6.438	6.409	755.5E6	339.5E6	994.979	991.780
33) L7 AR-1260-3	6.805	6.560	672.8E6	271.1E6	982.211	938.011
34) L7 AR-1260-4	7.065	7.031	428.5E6	190.3E6	967.221	967.353
35) L7 AR-1260-5	7.308	7.272	1355.3E6	439.4E6	1014.259	981.589

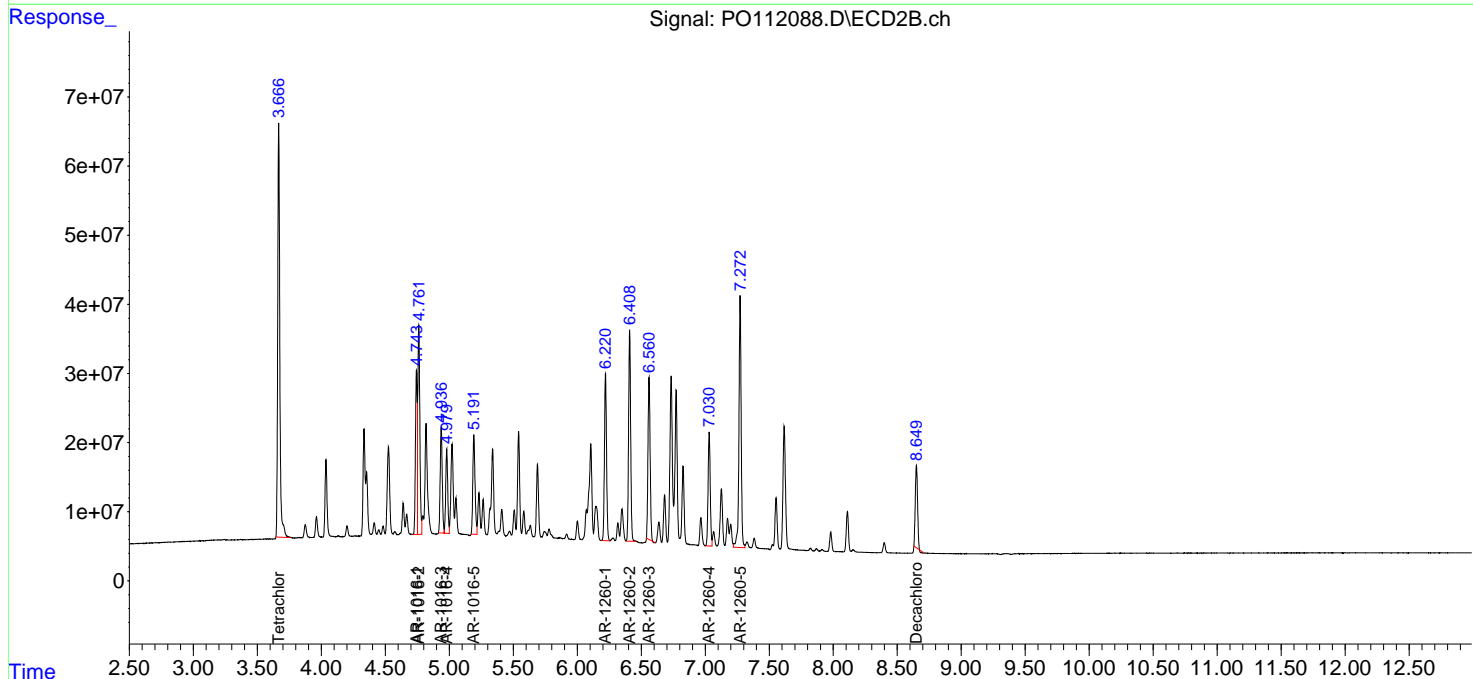
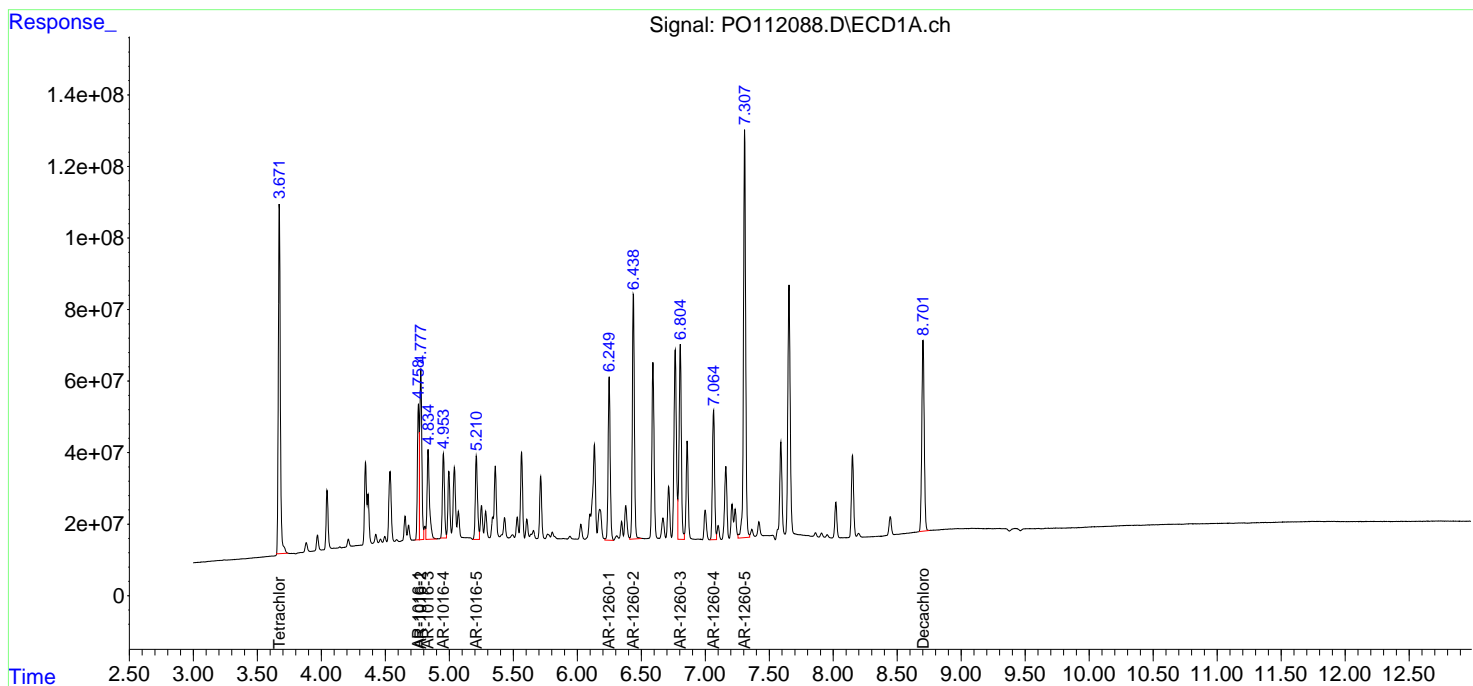
(f)=RT Delta > 1/2 Window (#)=Amounts differ by > 25% (m)=manual int.

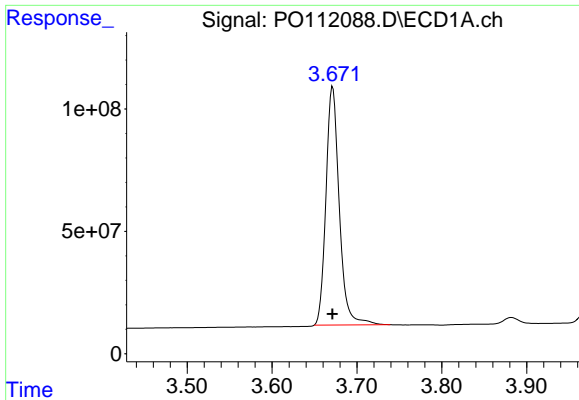
Data Path : Z:\pestpcbsrv\HPCHEM1\ECD_O\Data\P0070825\
 Data File : P0112088.D
 Signal(s) : Signal #1: ECD1A.ch Signal #2: ECD2B.ch
 Acq On : 08 Jul 2025 14:06
 Operator : YP/AJ
 Sample : AR1660ICC1000
 Misc :
 ALS Vial : 3 Sample Multiplier: 1

Instrument :
 ECD_O
 ClientSampleId :
 AR1660ICC1000

Integration File signal 1: autoint1.e
 Integration File signal 2: autoint2.e
 Quant Time: Jul 08 15:11:12 2025
 Quant Method : Z:\pestpcbsrv\HPCHEM1\ECD_O\methods\P0070825.M
 Quant Title : GC EXTRACTABLES
 QLast Update : Tue Jul 08 15:05:13 2025
 Response via : Initial Calibration
 Integrator: ChemStation

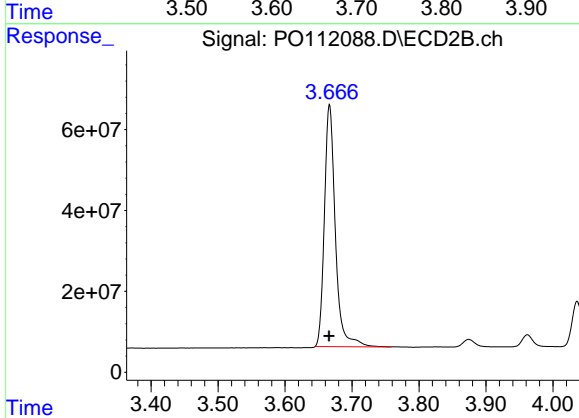
Volume Inj. : 2 µl
 Signal #1 Phase : ZB-MR1 Signal #2 Phase: ZB-MR2
 Signal #1 Info : 30Mx0.32mmx 0.50µ Signal #2 Info : 30M x 0.32mm x 0.25µm



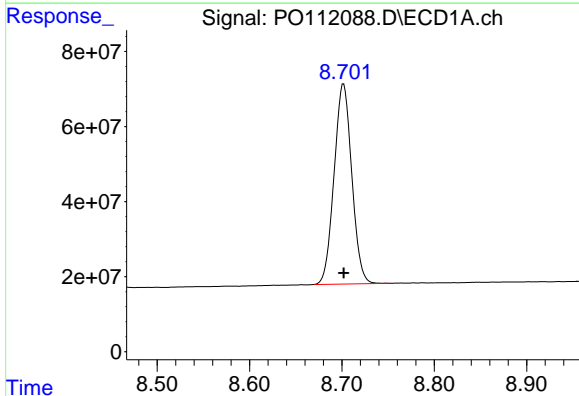


#1 Tetrachloro-m-xylene
 R.T.: 3.671 min
 Delta R.T.: 0.000 min
 Response: 1065391349
 Conc: 100.03 ng/ml

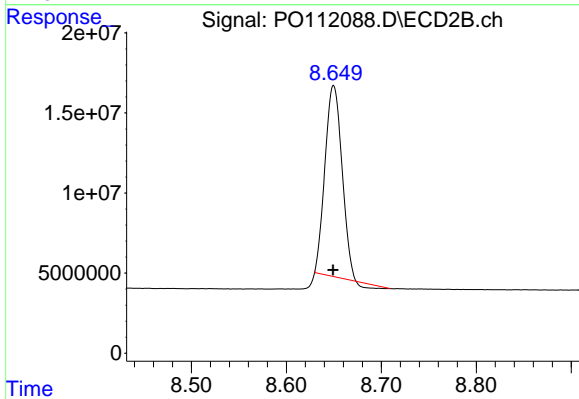
Instrument :
 ECD_O
 ClientSampleId :
 AR1660ICC1000



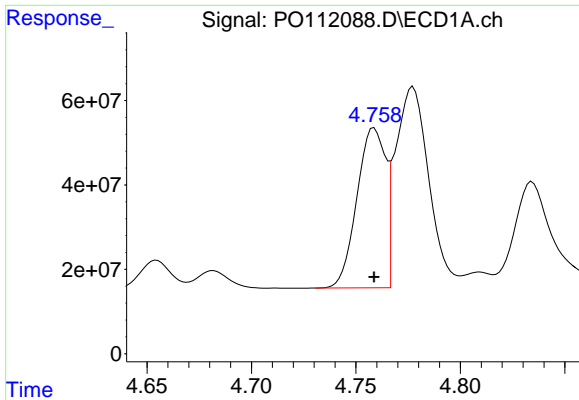
#1 Tetrachloro-m-xylene
 R.T.: 3.666 min
 Delta R.T.: 0.000 min
 Response: 678623932
 Conc: 99.49 ng/ml



#2 Decachlorobiphenyl
 R.T.: 8.702 min
 Delta R.T.: 0.000 min
 Response: 709169575
 Conc: 99.36 ng/ml



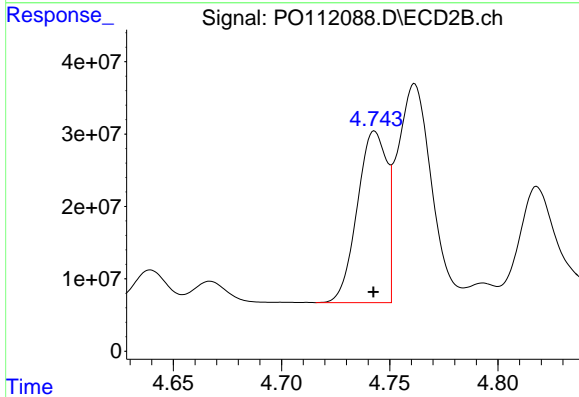
#2 Decachlorobiphenyl
 R.T.: 8.650 min
 Delta R.T.: 0.000 min
 Response: 145220382
 Conc: 82.86 ng/ml



#3 AR-1016-1

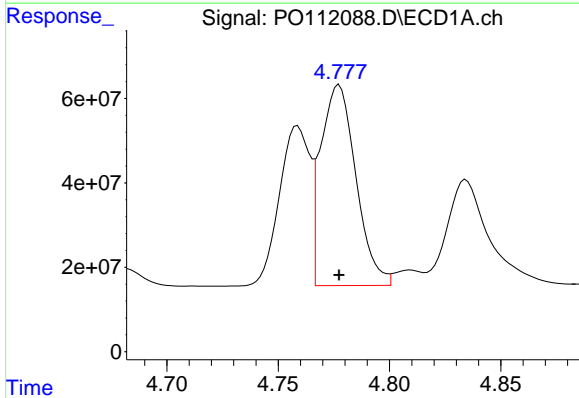
R.T.: 4.759 min
 Delta R.T.: 0.000 min
 Response: 360742355
 Conc: 1002.97 ng/ml

Instrument :
 ECD_O
 ClientSampleId :
 AR1660ICC1000



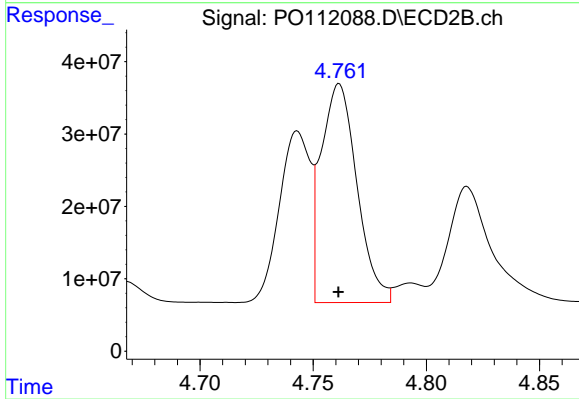
#3 AR-1016-1

R.T.: 4.743 min
 Delta R.T.: 0.000 min
 Response: 224689947
 Conc: 1009.91 ng/ml



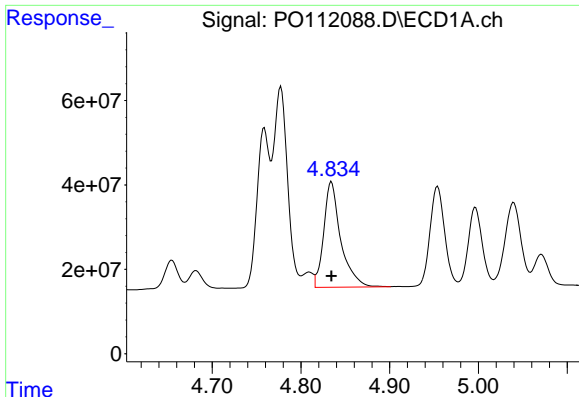
#4 AR-1016-2

R.T.: 4.777 min
 Delta R.T.: 0.000 min
 Response: 524757576
 Conc: 997.60 ng/ml



#4 AR-1016-2

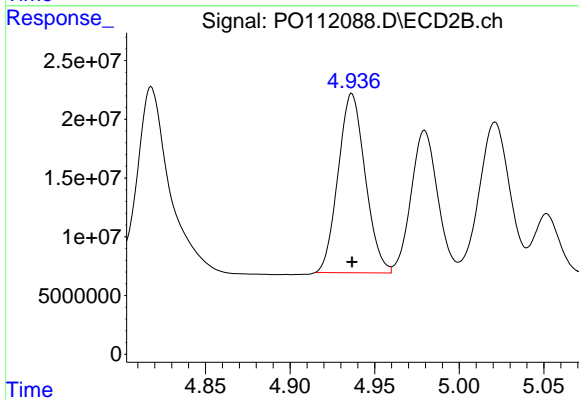
R.T.: 4.761 min
 Delta R.T.: 0.000 min
 Response: 333676696
 Conc: 990.82 ng/ml



#5 AR-1016-3

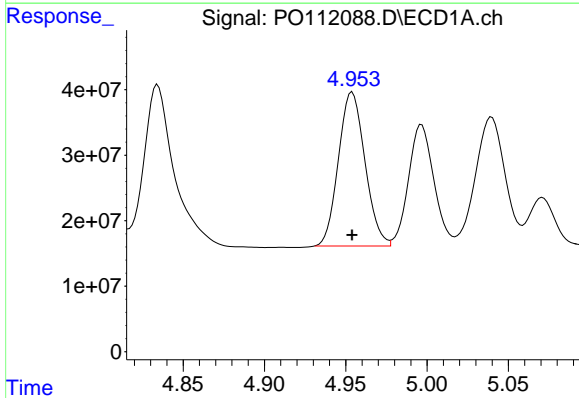
R.T.: 4.834 min
 Delta R.T.: 0.000 min
 Response: 332829086
 Conc: 996.76 ng/ml

Instrument :
 ECD_O
 ClientSampleId :
 AR1660ICC1000



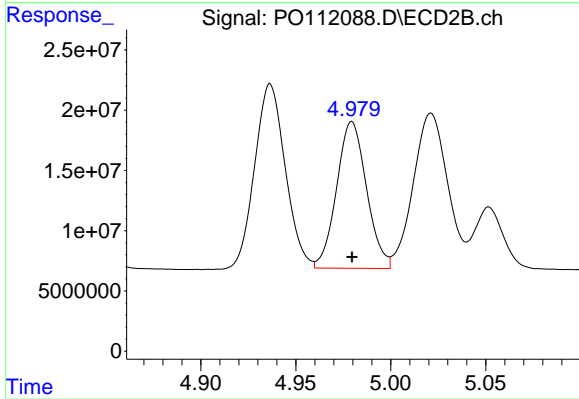
#5 AR-1016-3

R.T.: 4.937 min
 Delta R.T.: 0.000 min
 Response: 170039672
 Conc: 978.50 ng/ml



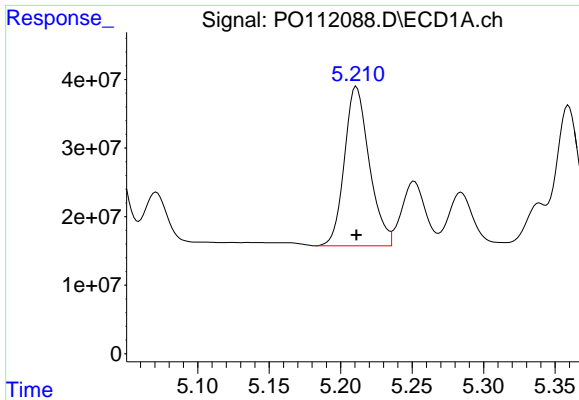
#6 AR-1016-4

R.T.: 4.954 min
 Delta R.T.: 0.000 min
 Response: 267114546
 Conc: 996.41 ng/ml



#6 AR-1016-4

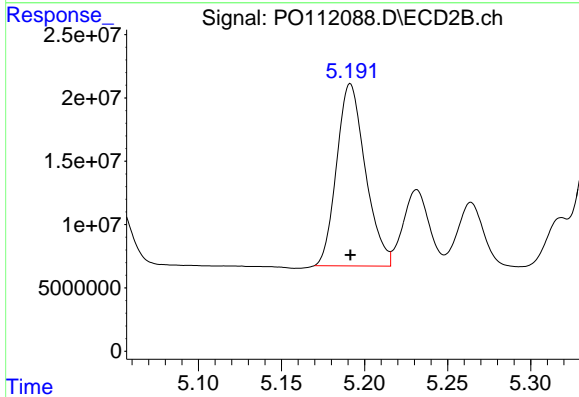
R.T.: 4.980 min
 Delta R.T.: 0.000 min
 Response: 133548654
 Conc: 973.94 ng/ml



#7 AR-1016-5

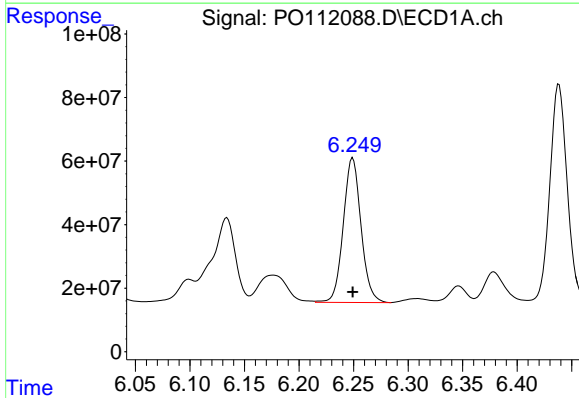
R.T.: 5.211 min
 Delta R.T.: 0.000 min
 Response: 281257689
 Conc: 1001.44 ng/ml

Instrument :
 ECD_O
 ClientSampleId :
 AR1660ICC1000



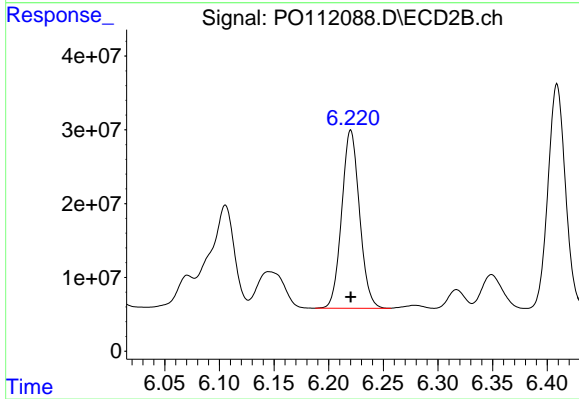
#7 AR-1016-5

R.T.: 5.191 min
 Delta R.T.: 0.000 min
 Response: 172958737
 Conc: 970.77 ng/ml



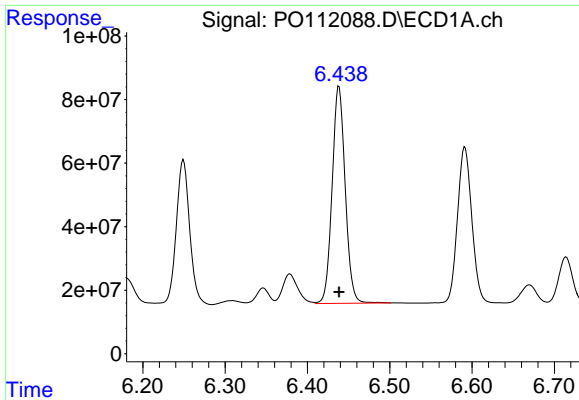
#31 AR-1260-1

R.T.: 6.249 min
 Delta R.T.: 0.000 min
 Response: 515263930
 Conc: 991.09 ng/ml



#31 AR-1260-1

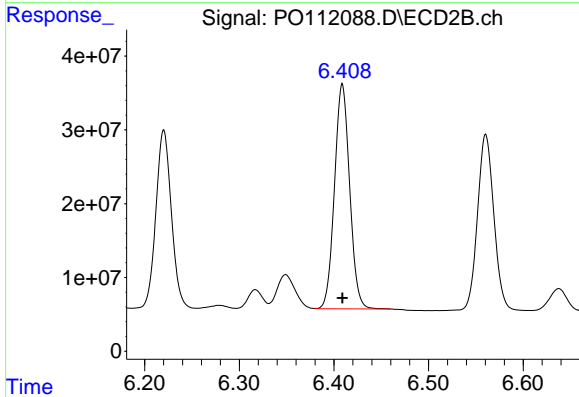
R.T.: 6.220 min
 Delta R.T.: 0.000 min
 Response: 273966572
 Conc: 981.32 ng/ml



#32 AR-1260-2

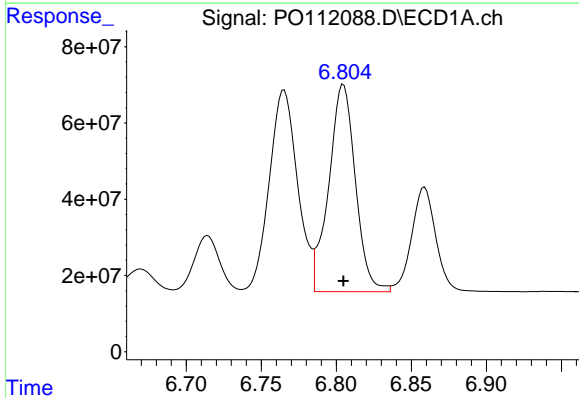
R.T.: 6.438 min
 Delta R.T.: 0.000 min
 Response: 755458656
 Conc: 994.98 ng/ml

Instrument :
 ECD_O
 ClientSampleId :
 AR1660ICC1000



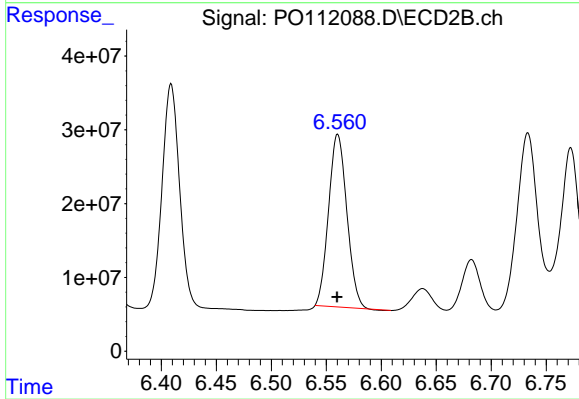
#32 AR-1260-2

R.T.: 6.409 min
 Delta R.T.: 0.000 min
 Response: 339471861
 Conc: 991.78 ng/ml



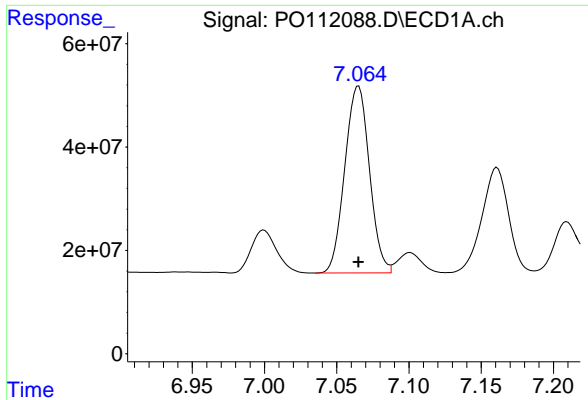
#33 AR-1260-3

R.T.: 6.805 min
 Delta R.T.: 0.000 min
 Response: 672764264
 Conc: 982.21 ng/ml



#33 AR-1260-3

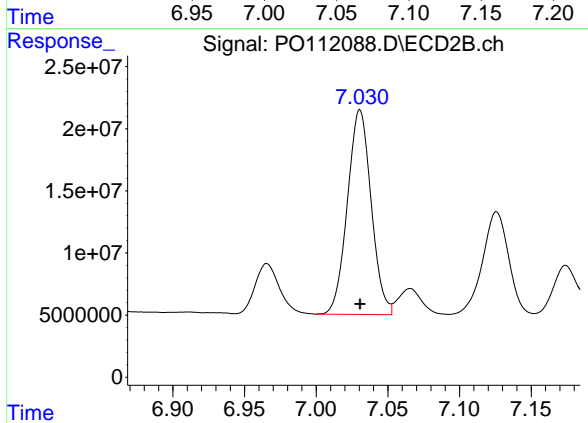
R.T.: 6.560 min
 Delta R.T.: 0.000 min
 Response: 271095387
 Conc: 938.01 ng/ml



#34 AR-1260-4

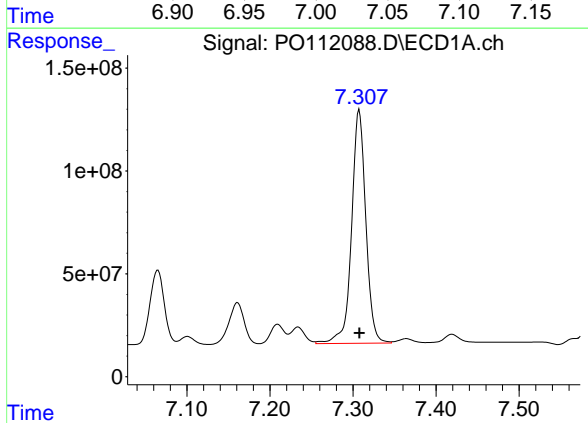
R.T.: 7.065 min
 Delta R.T.: 0.000 min
 Response: 428461498
 Conc: 967.22 ng/ml

Instrument :
 ECD_O
 ClientSampleId :
 AR1660ICC1000



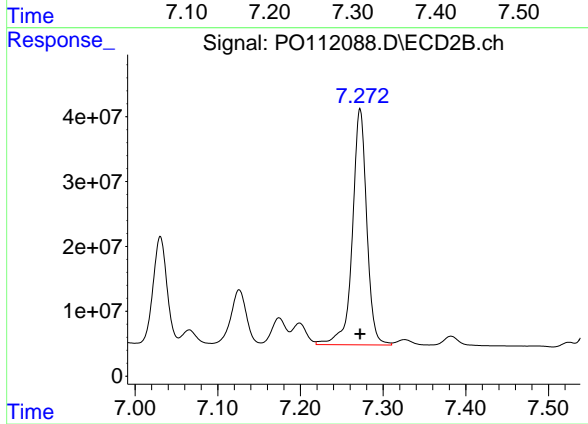
#34 AR-1260-4

R.T.: 7.031 min
 Delta R.T.: 0.000 min
 Response: 190320237
 Conc: 967.35 ng/ml



#35 AR-1260-5

R.T.: 7.308 min
 Delta R.T.: 0.000 min
 Response: 1355306152
 Conc: 1014.26 ng/ml



#35 AR-1260-5

R.T.: 7.272 min
 Delta R.T.: 0.000 min
 Response: 439428363
 Conc: 981.59 ng/ml