

Data Path : Z:\pestpcbsrv\HPCHEM1\ECD_0\Data\P0070825\
 Data File : P0112089.D
 Signal(s) : Signal #1: ECD1A.ch Signal #2: ECD2B.ch
 Acq On : 08 Jul 2025 14:25
 Operator : YP/AJ
 Sample : AR1660ICC750
 Misc :
 ALS Vial : 4 Sample Multiplier: 1

Instrument :
 ECD_0
 ClientSampleId :
 AR1660ICC750

Integration File signal 1: autoint1.e
 Integration File signal 2: autoint2.e
 Quant Time: Jul 08 15:14:45 2025
 Quant Method : Z:\pestpcbsrv\HPCHEM1\ECD_0\methods\P0070825.M
 Quant Title : GC EXTRACTABLES
 QLast Update : Tue Jul 08 15:05:13 2025
 Response via : Initial Calibration
 Integrator: ChemStation

Volume Inj. : 2 µl
 Signal #1 Phase : ZB-MR2 Signal #2 Phase: ZB-MR2
 Signal #1 Info : 30Mx0.32mmx 0.50µ Signal #2 Info : 30M x 0.32mm x 0.25µm

Compound	RT#1	RT#2	Resp#1	Resp#2	ng/ml	ng/ml

System Monitoring Compounds						
1) SA Tetrachlo...	3.673	3.666	782.4E6	495.9E6	73.811	73.003
2) SA Decachlor...	8.704	8.650	536.0E6	117.1E6	75.070	66.913
Target Compounds						
3) L1 AR-1016-1	4.761	4.743	265.1E6	165.9E6	741.241	736.514
4) L1 AR-1016-2	4.780	4.762	385.3E6	249.7E6	738.229	743.699
5) L1 AR-1016-3	4.837	4.937	243.8E6	126.3E6	736.557	729.877
6) L1 AR-1016-4	4.956	4.979	197.7E6	99974022	741.523	735.926
7) L1 AR-1016-5	5.213	5.192	204.1E6	129.1E6	734.329	732.695
31) L7 AR-1260-1	6.252	6.221	385.5E6	206.7E6	744.352	743.536
32) L7 AR-1260-2	6.441	6.409	563.9E6	254.9E6	745.065	746.483
33) L7 AR-1260-3	6.808	6.561	509.8E6	203.6E6	746.212	709.489
34) L7 AR-1260-4	7.067	7.031	332.1E6	145.8E6	749.812	743.946
35) L7 AR-1260-5	7.309	7.273	1000.2E6	336.4E6	749.018	750.945

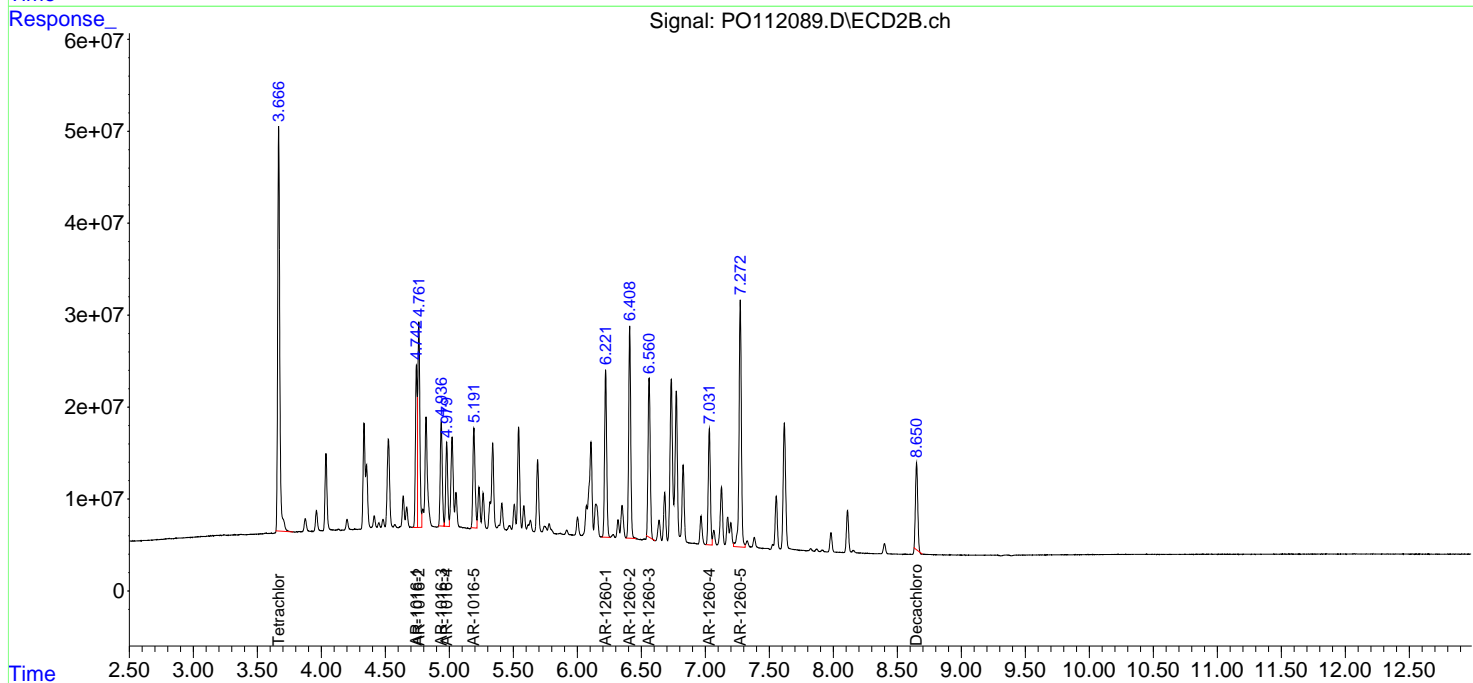
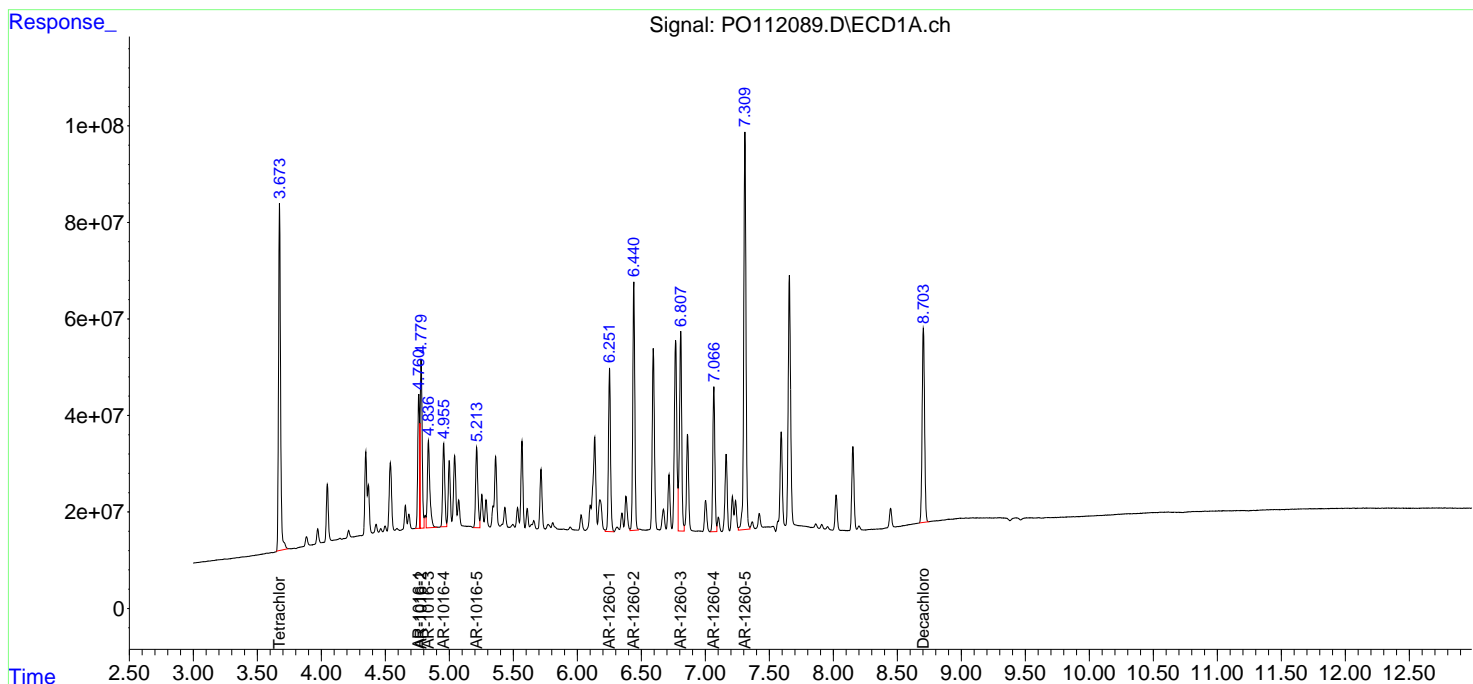
(f)=RT Delta > 1/2 Window (#)=Amounts differ by > 25% (m)=manual int.

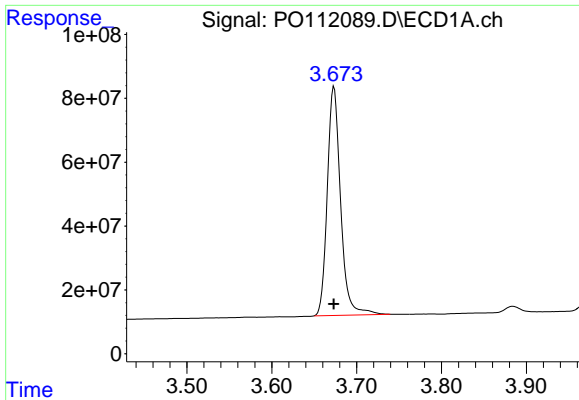
Data Path : Z:\pestpcbsrv\HPCHEM1\ECD_O\Data\PO070825\
 Data File : PO112089.D
 Signal(s) : Signal #1: ECD1A.ch Signal #2: ECD2B.ch
 Acq On : 08 Jul 2025 14:25
 Operator : YP/AJ
 Sample : AR1660ICC750
 Misc :
 ALS Vial : 4 Sample Multiplier: 1

Instrument :
 ECD_O
 ClientSampleId :
 AR1660ICC750

Integration File signal 1: autoint1.e
 Integration File signal 2: autoint2.e
 Quant Time: Jul 08 15:14:45 2025
 Quant Method : Z:\pestpcbsrv\HPCHEM1\ECD_O\methods\PO070825.M
 Quant Title : GC EXTRACTABLES
 QLast Update : Tue Jul 08 15:05:13 2025
 Response via : Initial Calibration
 Integrator: ChemStation

Volume Inj. : 2 µl
 Signal #1 Phase : ZB-MR1 Signal #2 Phase: ZB-MR2
 Signal #1 Info : 30Mx0.32mmx 0.50µ Signal #2 Info : 30M x 0.32mm x 0.25µm

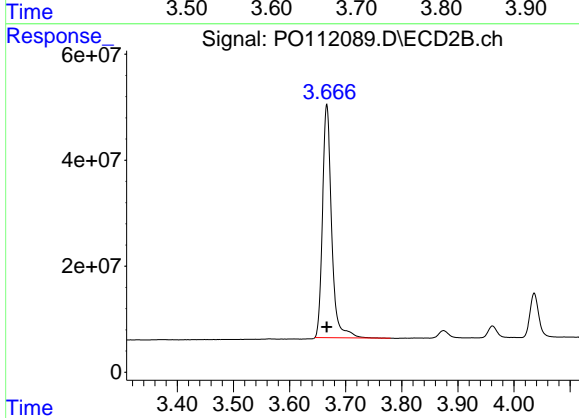




#1 Tetrachloro-m-xylene

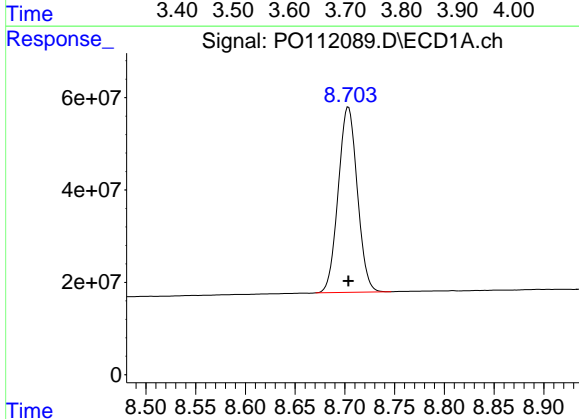
R.T.: 3.673 min
 Delta R.T.: 0.000 min
 Response: 782438196
 Conc: 73.81 ng/ml

Instrument :
 ECD_O
 ClientSampleId :
 AR1660ICC750



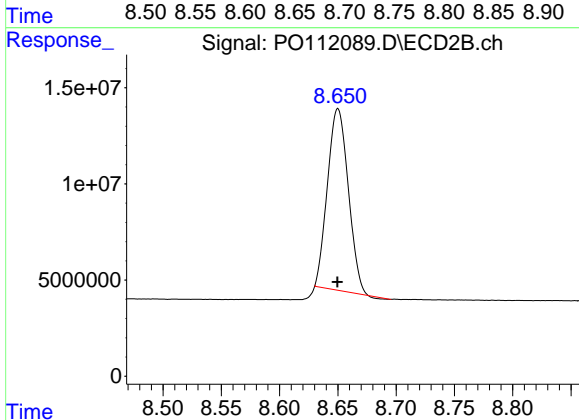
#1 Tetrachloro-m-xylene

R.T.: 3.666 min
 Delta R.T.: 0.000 min
 Response: 495928068
 Conc: 73.00 ng/ml



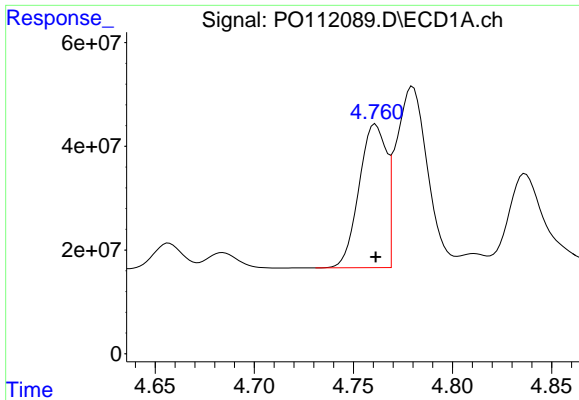
#2 Decachlorobiphenyl

R.T.: 8.704 min
 Delta R.T.: 0.000 min
 Response: 536034291
 Conc: 75.07 ng/ml



#2 Decachlorobiphenyl

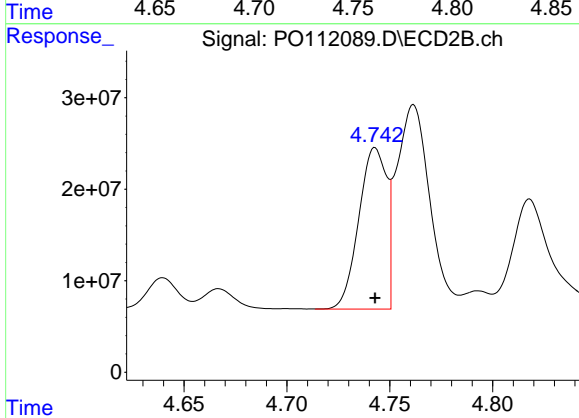
R.T.: 8.650 min
 Delta R.T.: 0.000 min
 Response: 117060156
 Conc: 66.91 ng/ml



#3 AR-1016-1

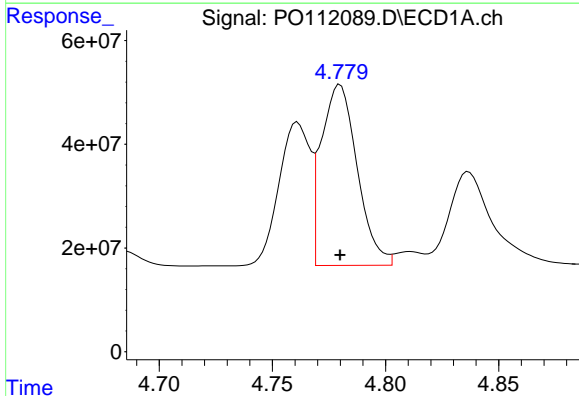
R.T.: 4.761 min
 Delta R.T.: 0.000 min
 Response: 265058313
 Conc: 741.24 ng/ml

Instrument :
 ECD_O
 ClientSampleId :
 AR1660ICC750



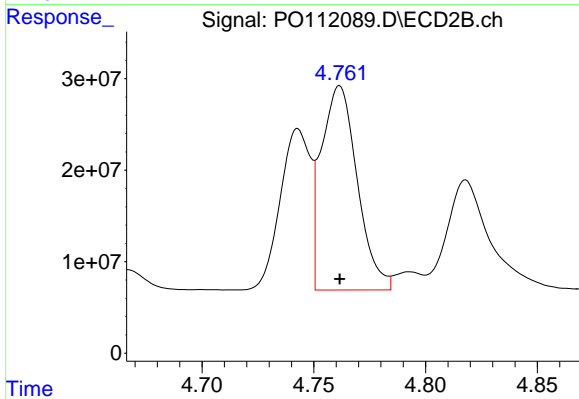
#3 AR-1016-1

R.T.: 4.743 min
 Delta R.T.: 0.000 min
 Response: 165898192
 Conc: 736.51 ng/ml



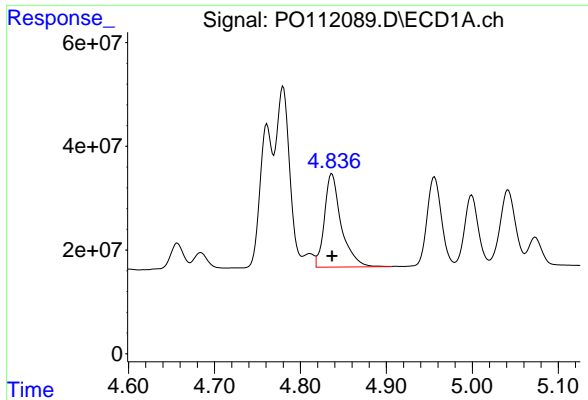
#4 AR-1016-2

R.T.: 4.780 min
 Delta R.T.: 0.000 min
 Response: 385300934
 Conc: 738.23 ng/ml



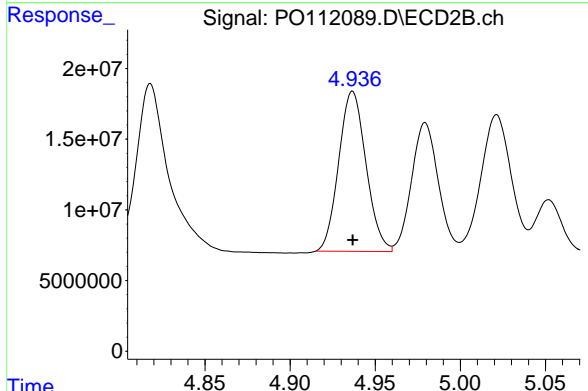
#4 AR-1016-2

R.T.: 4.762 min
 Delta R.T.: 0.000 min
 Response: 249723612
 Conc: 743.70 ng/ml

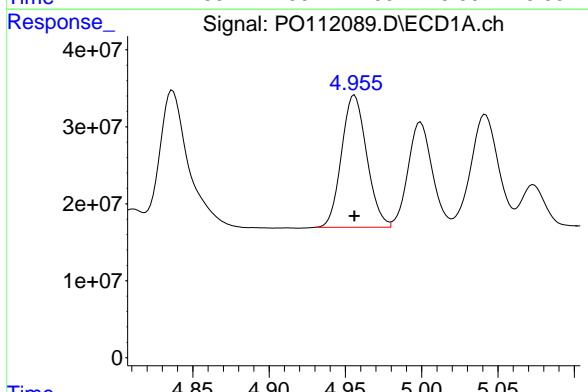


#5 AR-1016-3
 R.T.: 4.837 min
 Delta R.T.: 0.000 min
 Response: 243759059
 Conc: 736.56 ng/ml

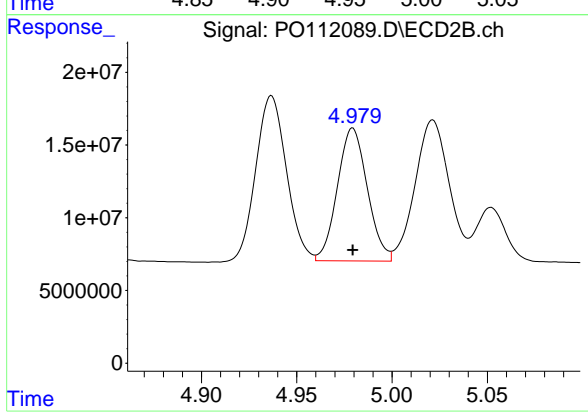
Instrument :
 ECD_O
 ClientSampleId :
 AR1660ICC750



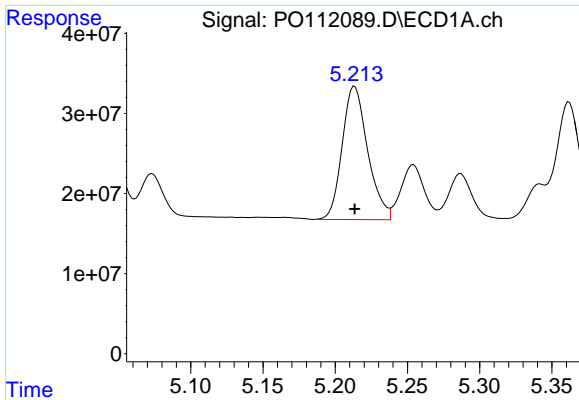
#5 AR-1016-3
 R.T.: 4.937 min
 Delta R.T.: 0.000 min
 Response: 126300756
 Conc: 729.88 ng/ml



#6 AR-1016-4
 R.T.: 4.956 min
 Delta R.T.: 0.000 min
 Response: 197668080
 Conc: 741.52 ng/ml



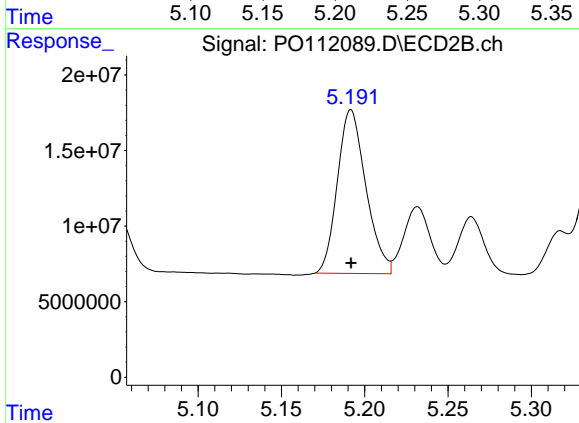
#6 AR-1016-4
 R.T.: 4.979 min
 Delta R.T.: 0.000 min
 Response: 99974022
 Conc: 735.93 ng/ml



#7 AR-1016-5

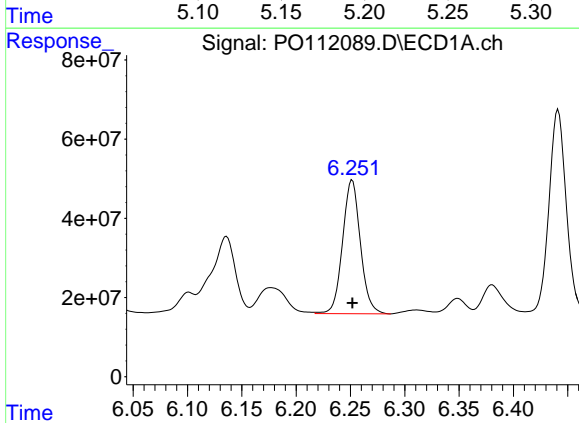
R.T.: 5.213 min
 Delta R.T.: 0.000 min
 Response: 204105527
 Conc: 734.33 ng/ml

Instrument :
 ECD_O
 ClientSampleId :
 AR1660ICC750



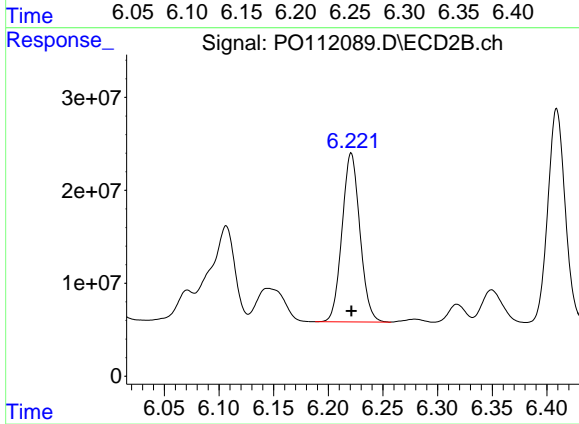
#7 AR-1016-5

R.T.: 5.192 min
 Delta R.T.: 0.000 min
 Response: 129052813
 Conc: 732.69 ng/ml



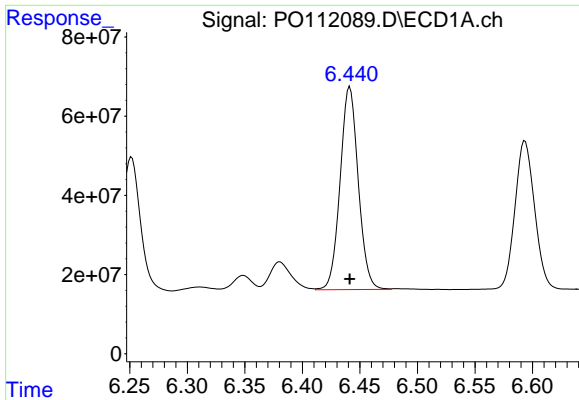
#31 AR-1260-1

R.T.: 6.252 min
 Delta R.T.: 0.000 min
 Response: 385533844
 Conc: 744.35 ng/ml



#31 AR-1260-1

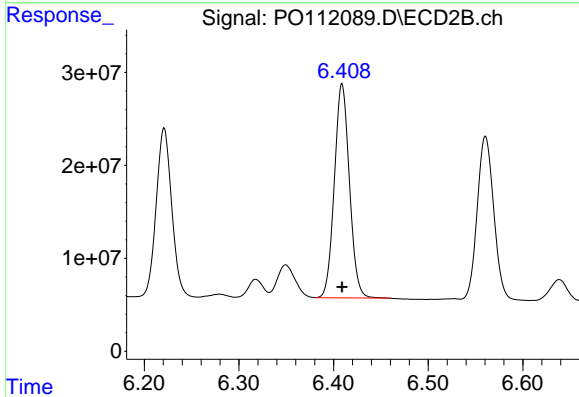
R.T.: 6.221 min
 Delta R.T.: 0.000 min
 Response: 206690683
 Conc: 743.54 ng/ml



#32 AR-1260-2

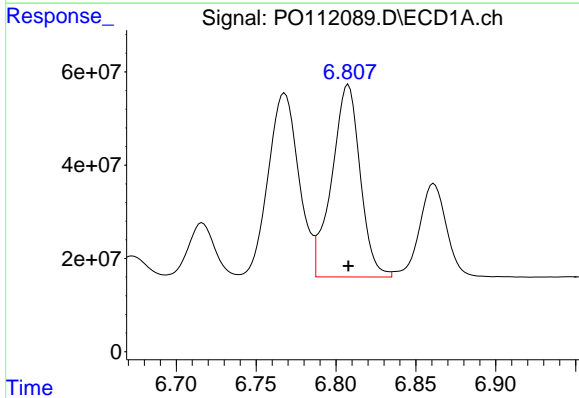
R.T.: 6.441 min
 Delta R.T.: 0.000 min
 Response: 563851179
 Conc: 745.06 ng/ml

Instrument :
 ECD_O
 ClientSampleId :
 AR1660ICC750



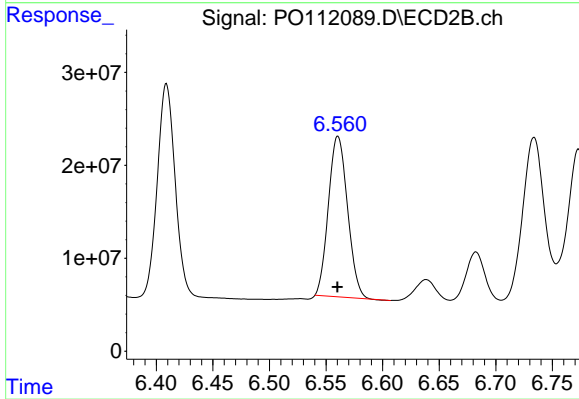
#32 AR-1260-2

R.T.: 6.409 min
 Delta R.T.: 0.000 min
 Response: 254912389
 Conc: 746.48 ng/ml



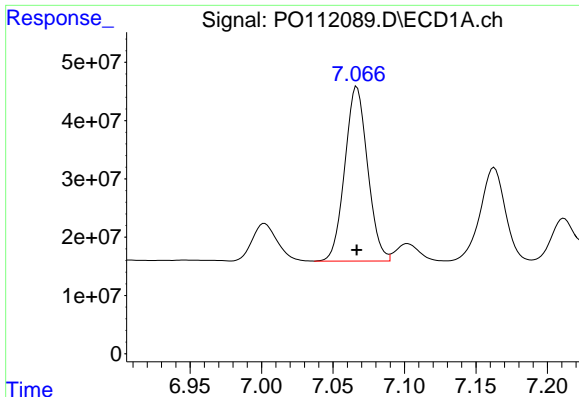
#33 AR-1260-3

R.T.: 6.808 min
 Delta R.T.: 0.000 min
 Response: 509828933
 Conc: 746.21 ng/ml



#33 AR-1260-3

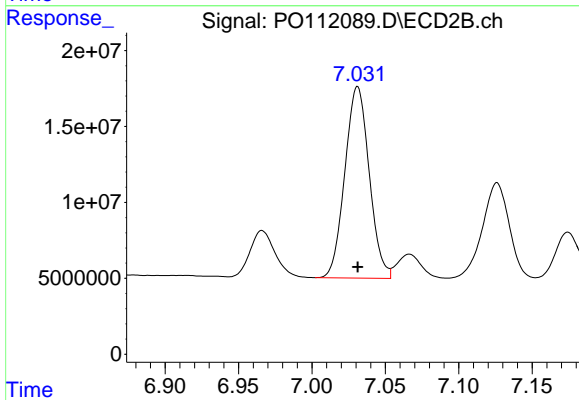
R.T.: 6.561 min
 Delta R.T.: 0.000 min
 Response: 203595451
 Conc: 709.49 ng/ml



#34 AR-1260-4

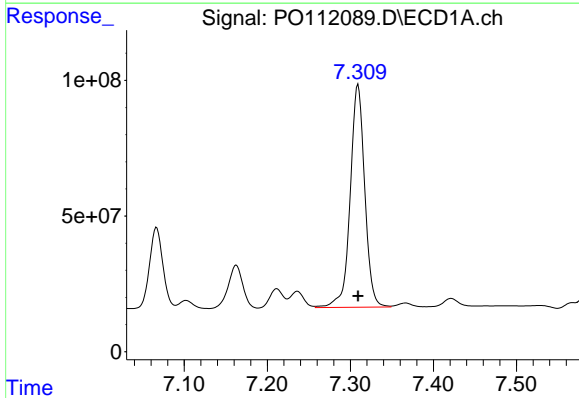
R.T.: 7.067 min
 Delta R.T.: 0.000 min
 Response: 332111911
 Conc: 749.81 ng/ml

Instrument :
 ECD_O
 ClientSampleId :
 AR1660ICC750



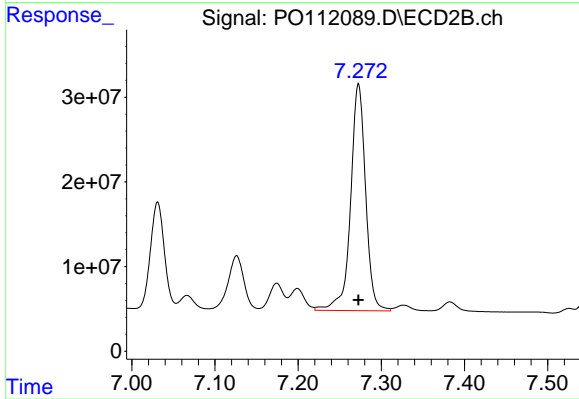
#34 AR-1260-4

R.T.: 7.031 min
 Delta R.T.: 0.000 min
 Response: 145778050
 Conc: 743.95 ng/ml



#35 AR-1260-5

R.T.: 7.309 min
 Delta R.T.: 0.000 min
 Response: 1000222126
 Conc: 749.02 ng/ml



#35 AR-1260-5

R.T.: 7.273 min
 Delta R.T.: 0.000 min
 Response: 336387510
 Conc: 750.94 ng/ml