

Data Path : Z:\pestpcbsrv\HPCHEM1\ECD_0\Data\P0070825\
 Data File : PO112090.D
 Signal(s) : Signal #1: ECD1A.ch Signal #2: ECD2B.ch
 Acq On : 08 Jul 2025 14:43
 Operator : YP/AJ
 Sample : AR1660ICC500
 Misc :
 ALS Vial : 5 Sample Multiplier: 1

Instrument :
 ECD_0
 ClientSampleId :
 AR1660ICC500

Integration File signal 1: autoint1.e
 Integration File signal 2: autoint2.e
 Quant Time: Jul 08 15:07:25 2025
 Quant Method : Z:\pestpcbsrv\HPCHEM1\ECD_0\methods\P0070825.M
 Quant Title : GC EXTRACTABLES
 QLast Update : Tue Jul 08 15:05:13 2025
 Response via : Initial Calibration
 Integrator: ChemStation

Volume Inj. : 2 µl
 Signal #1 Phase : ZB-MR1 Signal #2 Phase: ZB-MR2
 Signal #1 Info : 30Mx0.32mmx 0.50µ Signal #2 Info : 30M x 0.32mm x 0.25µm

| Compound | RT#1 | RT#2 | Resp#1 | Resp#2 | ng/ml | ng/ml |
|-----------------------------|-------|-------|---------|----------|---------|---------|
| ----- | | | | | | |
| System Monitoring Compounds | | | | | | |
| 1) SA Tetrachlo... | 3.673 | 3.684 | 525.7E6 | 341.2E6 | 50.000 | 50.000 |
| 2) SA Decachlor... | 8.703 | 8.668 | 359.1E6 | 89500378 | 50.000 | 50.000 |
| Target Compounds | | | | | | |
| 3) L1 AR-1016-1 | 4.761 | 4.761 | 179.3E6 | 114.9E6 | 500.000 | 500.000 |
| 4) L1 AR-1016-2 | 4.780 | 4.779 | 263.6E6 | 170.4E6 | 500.000 | 500.000 |
| 5) L1 AR-1016-3 | 4.836 | 4.954 | 167.5E6 | 88755203 | 500.000 | 500.000 |
| 6) L1 AR-1016-4 | 4.956 | 4.997 | 134.5E6 | 70348152 | 500.000 | 500.000 |
| 7) L1 AR-1016-5 | 5.213 | 5.209 | 140.2E6 | 91687095 | 500.000 | 500.000 |
| 31) L7 AR-1260-1 | 6.251 | 6.238 | 262.3E6 | 142.2E6 | 500.000 | 500.000 |
| 32) L7 AR-1260-2 | 6.441 | 6.426 | 381.5E6 | 172.5E6 | 500.000 | 500.000 |
| 33) L7 AR-1260-3 | 6.807 | 6.578 | 348.6E6 | 146.6E6 | 500.000 | 500.000 |
| 34) L7 AR-1260-4 | 7.067 | 7.048 | 228.8E6 | 101.6E6 | 500.000 | 500.000 |
| 35) L7 AR-1260-5 | 7.309 | 7.290 | 658.6E6 | 228.0E6 | 500.000 | 500.000 |

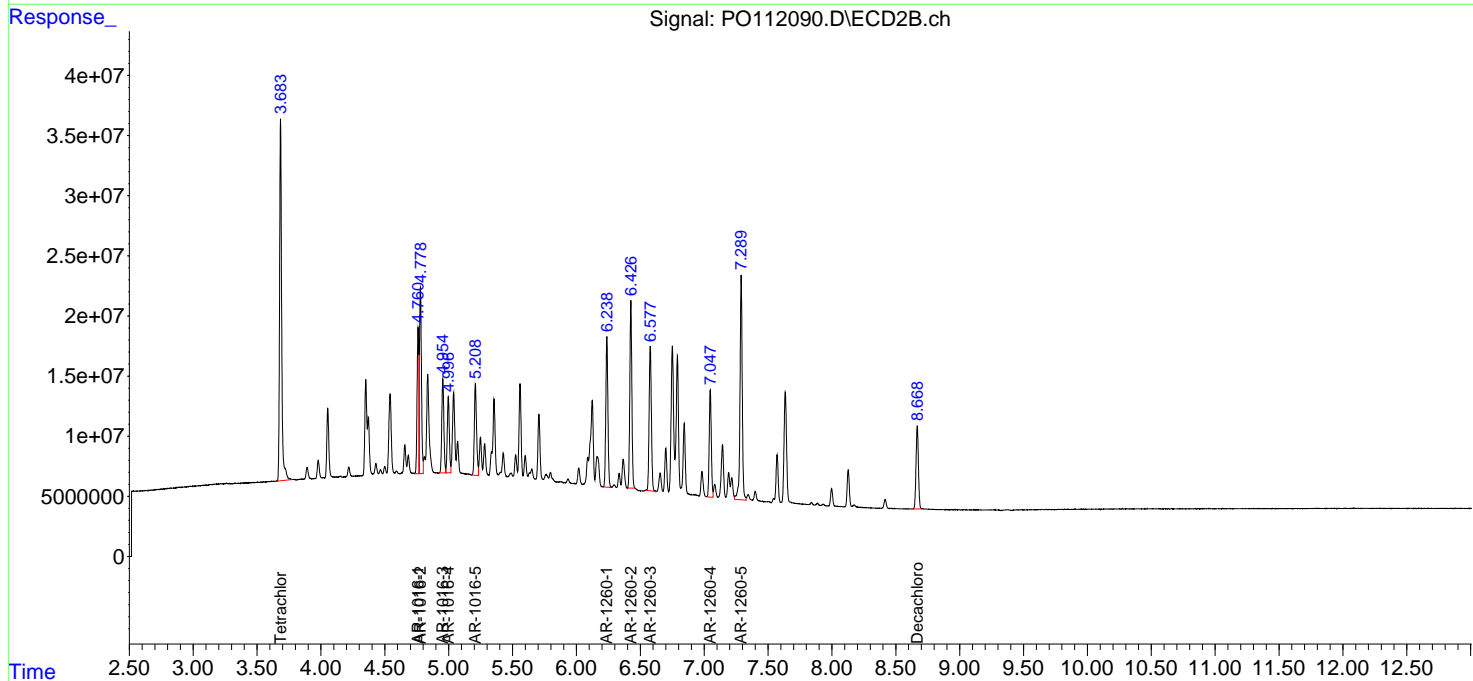
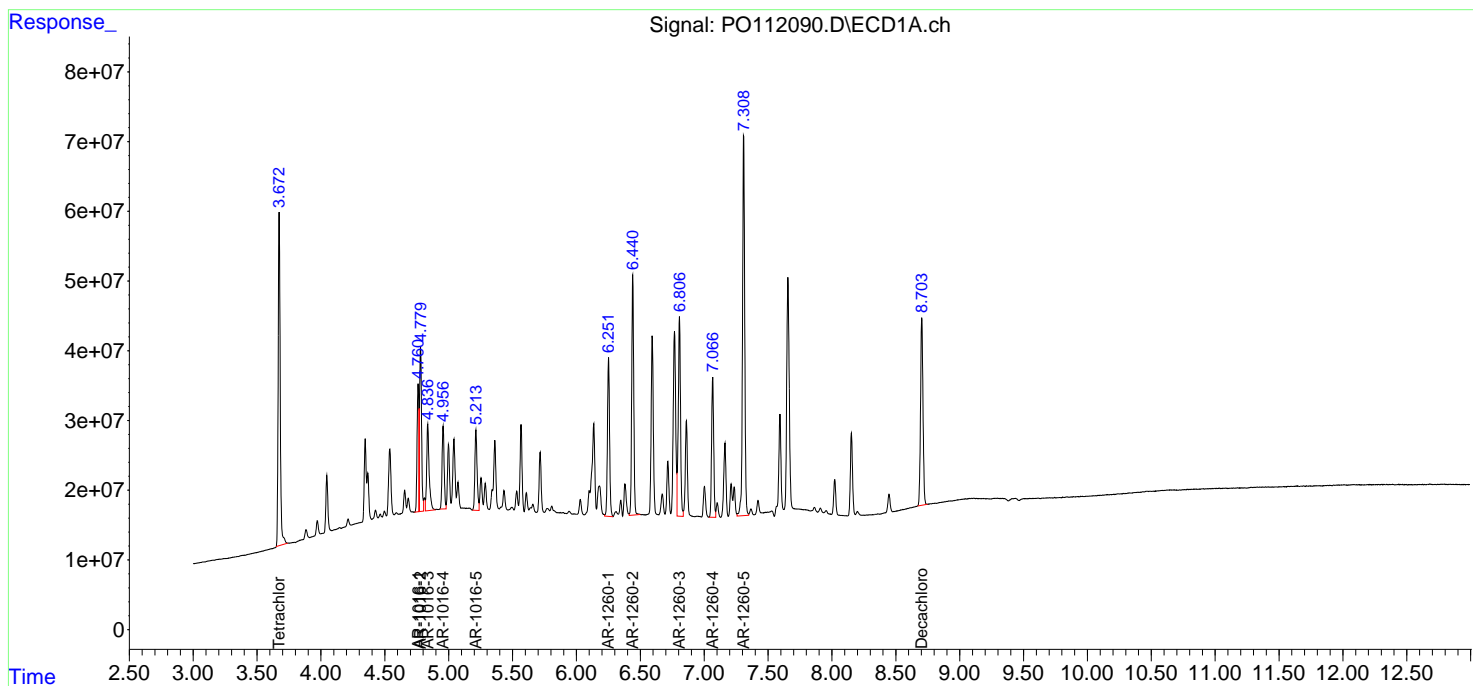
(f)=RT Delta > 1/2 Window (#)=Amounts differ by > 25% (m)=manual int.

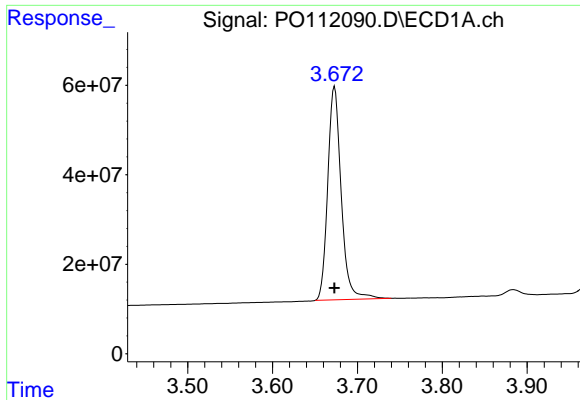
Data Path : Z:\pestpcbsrv\HPCHEM1\ECD_O\Data\PO070825\
Data File : PO112090.D
Signal(s) : Signal #1: ECD1A.ch Signal #2: ECD2B.ch
Acq On : 08 Jul 2025 14:43
Operator : YP/AJ
Sample : AR1660ICC500
Misc :
ALS Vial : 5 Sample Multiplier: 1

Instrument :
ECD_O
ClientSampleId :
AR1660ICC500

Integration File signal 1: autoint1.e
Integration File signal 2: autoint2.e
Quant Time: Jul 08 15:07:25 2025
Quant Method : Z:\pestpcbsrv\HPCHEM1\ECD_O\methods\PO070825.M
Quant Title : GC EXTRACTABLES
QLast Update : Tue Jul 08 15:05:13 2025
Response via : Initial Calibration
Integrator: ChemStation

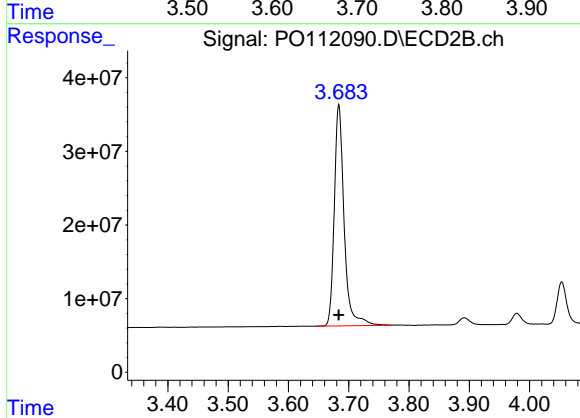
Volume Inj. : 2 µl
Signal #1 Phase : ZB-MR1 Signal #2 Phase: ZB-MR2
Signal #1 Info : 30Mx0.32mmx 0.50µ Signal #2 Info : 30M x 0.32mm x 0.25µm



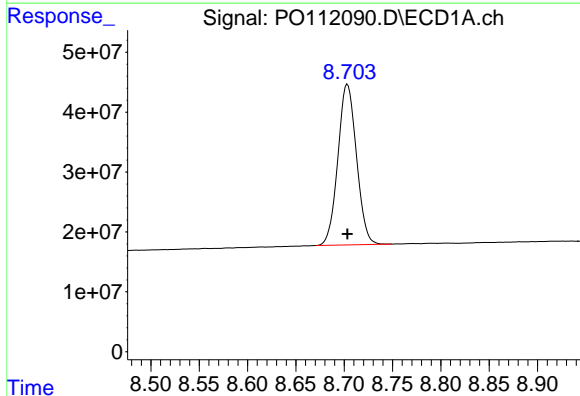


#1 Tetrachloro-m-xylene
 R.T.: 3.673 min
 Delta R.T.: 0.000 min
 Response: 525664563
 Conc: 50.00 ng/ml

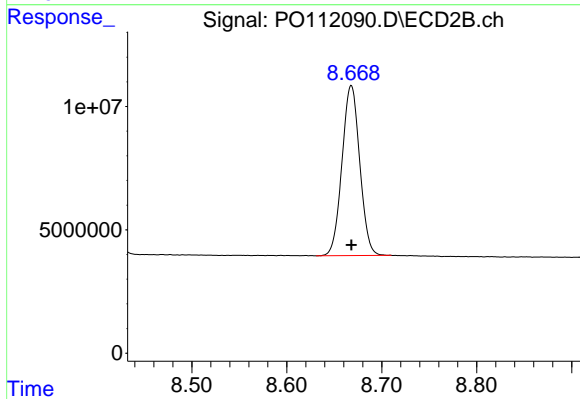
Instrument :
 ECD_O
 ClientSampleId :
 AR1660ICC500



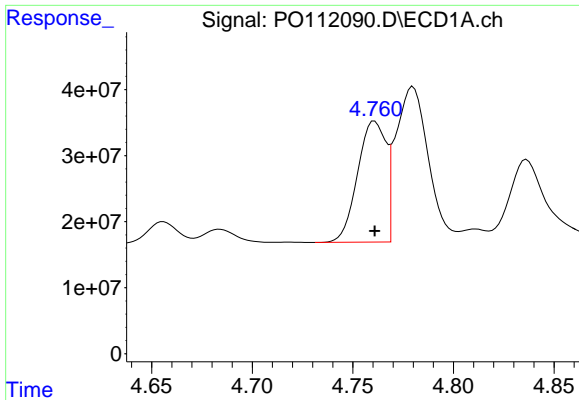
#1 Tetrachloro-m-xylene
 R.T.: 3.684 min
 Delta R.T.: 0.000 min
 Response: 341192636
 Conc: 50.00 ng/ml



#2 Decachlorobiphenyl
 R.T.: 8.703 min
 Delta R.T.: 0.000 min
 Response: 359131525
 Conc: 50.00 ng/ml



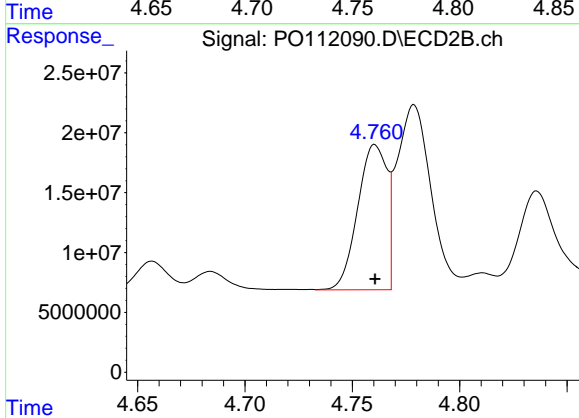
#2 Decachlorobiphenyl
 R.T.: 8.668 min
 Delta R.T.: 0.000 min
 Response: 89500378
 Conc: 50.00 ng/ml



#3 AR-1016-1

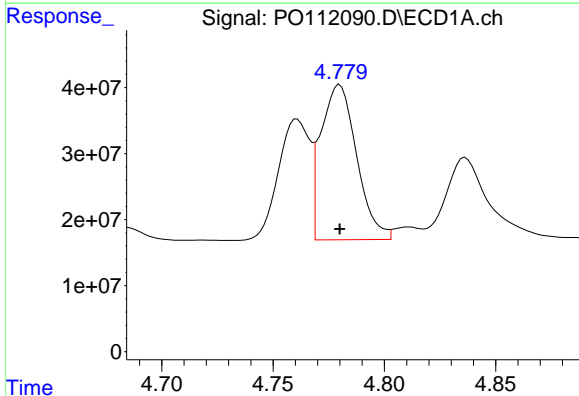
R.T.: 4.761 min
 Delta R.T.: 0.000 min
 Response: 179304039
 Conc: 500.00 ng/ml

Instrument :
 ECD_O
 ClientSampleId :
 AR1660ICC500



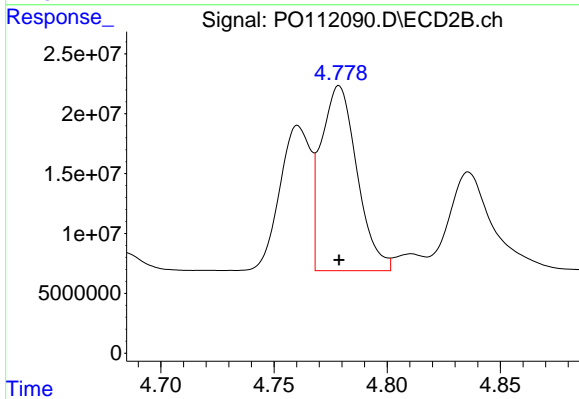
#3 AR-1016-1

R.T.: 4.761 min
 Delta R.T.: 0.000 min
 Response: 114927870
 Conc: 500.00 ng/ml



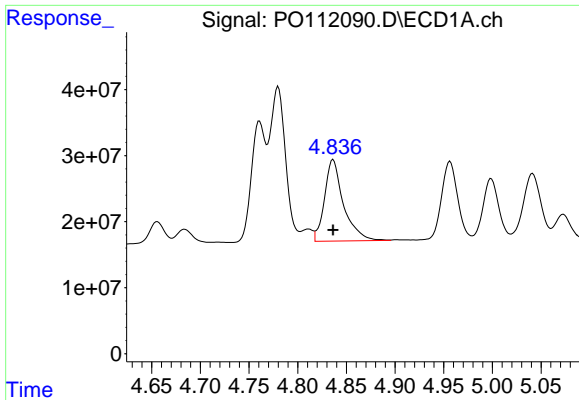
#4 AR-1016-2

R.T.: 4.780 min
 Delta R.T.: 0.000 min
 Response: 263643129
 Conc: 500.00 ng/ml



#4 AR-1016-2

R.T.: 4.779 min
 Delta R.T.: 0.000 min
 Response: 170358287
 Conc: 500.00 ng/ml

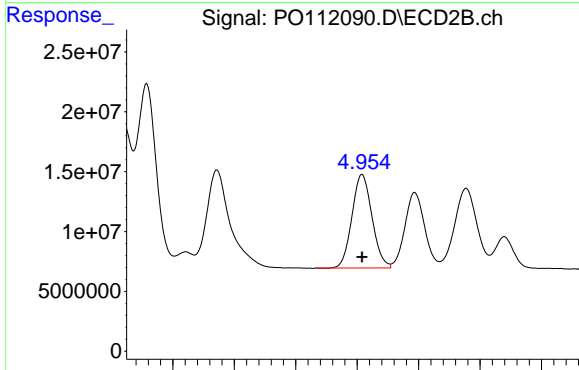


#5 AR-1016-3

R.T.: 4.836 min
 Delta R.T.: 0.000 min
 Response: 167495186
 Conc: 500.00 ng/ml

Instrument :
 ECD_O
 ClientSampleId :
 AR1660ICC500

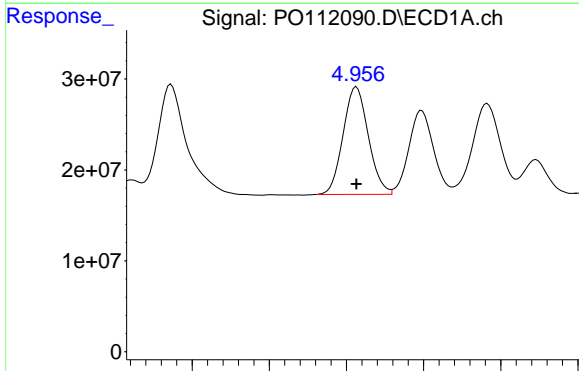
Time 4.65 4.70 4.75 4.80 4.85 4.90 4.95 5.00 5.05



#5 AR-1016-3

R.T.: 4.954 min
 Delta R.T.: 0.000 min
 Response: 88755203
 Conc: 500.00 ng/ml

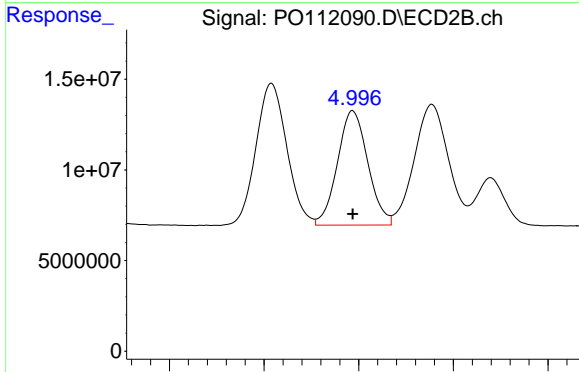
Time 4.80 4.85 4.90 4.95 5.00 5.05 5.10



#6 AR-1016-4

R.T.: 4.956 min
 Delta R.T.: 0.000 min
 Response: 134519633
 Conc: 500.00 ng/ml

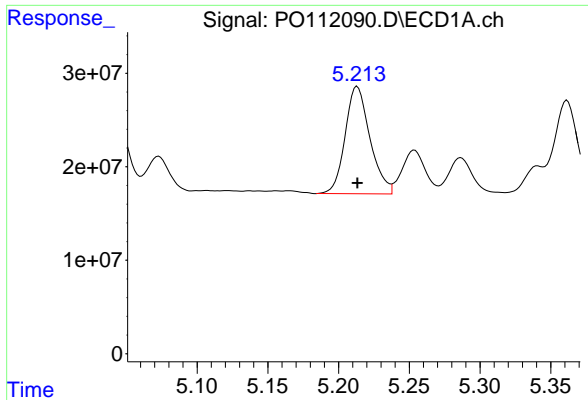
Time 4.85 4.90 4.95 5.00 5.05



#6 AR-1016-4

R.T.: 4.997 min
 Delta R.T.: 0.000 min
 Response: 70348152
 Conc: 500.00 ng/ml

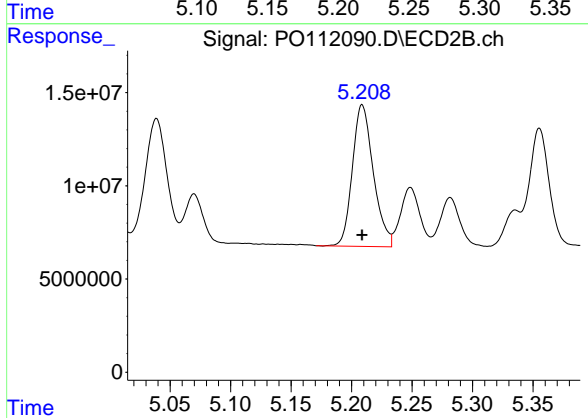
Time 4.90 4.95 5.00 5.05 5.10



#7 AR-1016-5

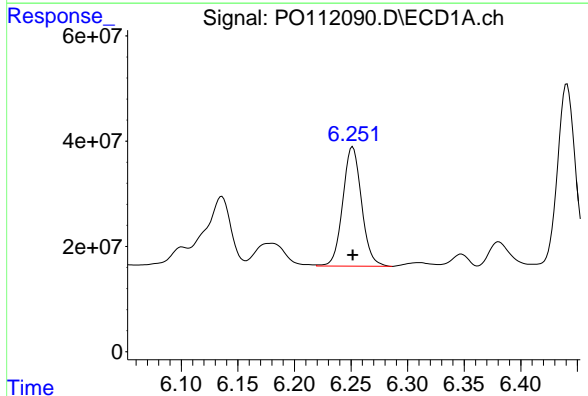
R.T.: 5.213 min
 Delta R.T.: 0.000 min
 Response: 140223352
 Conc: 500.00 ng/ml

Instrument :
 ECD_O
 ClientSampleId :
 AR1660ICC500



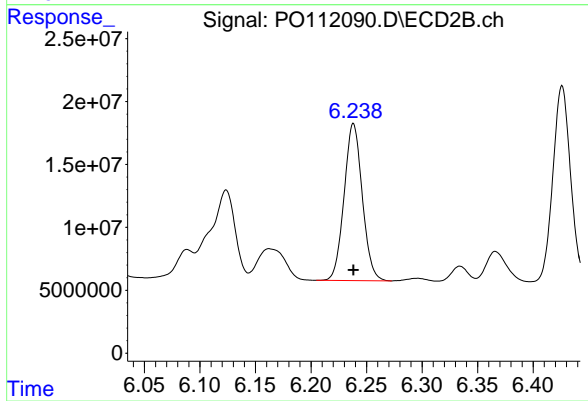
#7 AR-1016-5

R.T.: 5.209 min
 Delta R.T.: 0.000 min
 Response: 91687095
 Conc: 500.00 ng/ml



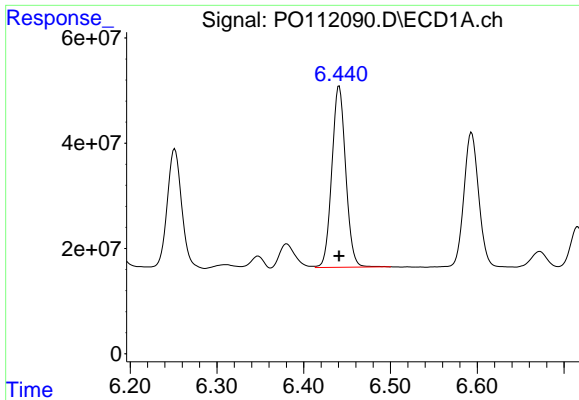
#31 AR-1260-1

R.T.: 6.251 min
 Delta R.T.: 0.000 min
 Response: 262264034
 Conc: 500.00 ng/ml



#31 AR-1260-1

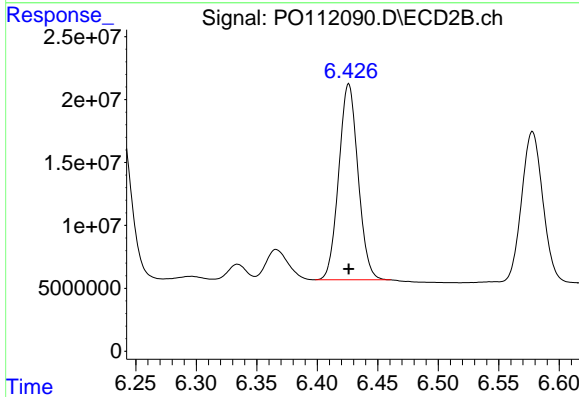
R.T.: 6.238 min
 Delta R.T.: 0.000 min
 Response: 142198185
 Conc: 500.00 ng/ml



#32 AR-1260-2

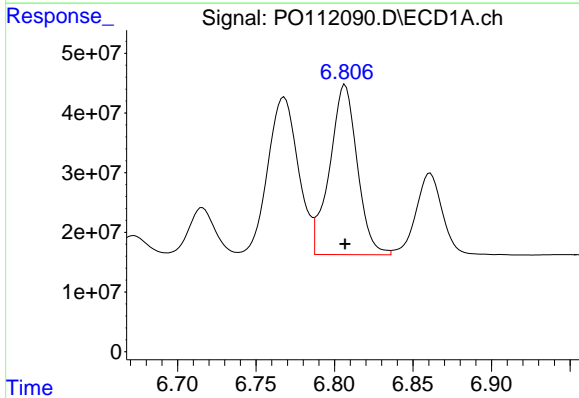
R.T.: 6.441 min
 Delta R.T.: 0.000 min
 Response: 381541844
 Conc: 500.00 ng/ml

Instrument :
 ECD_O
 ClientSampleId :
 AR1660ICC500



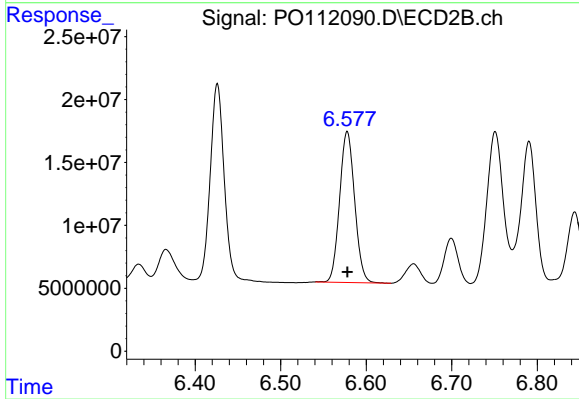
#32 AR-1260-2

R.T.: 6.426 min
 Delta R.T.: 0.000 min
 Response: 172549408
 Conc: 500.00 ng/ml



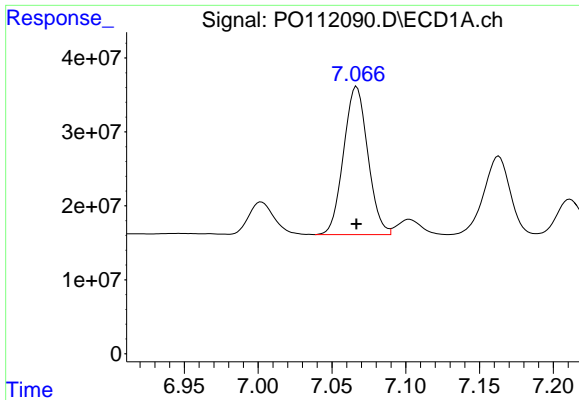
#33 AR-1260-3

R.T.: 6.807 min
 Delta R.T.: 0.000 min
 Response: 348566351
 Conc: 500.00 ng/ml



#33 AR-1260-3

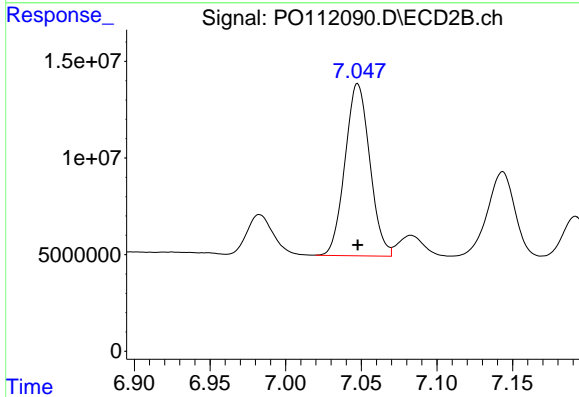
R.T.: 6.578 min
 Delta R.T.: 0.000 min
 Response: 146577768
 Conc: 500.00 ng/ml



#34 AR-1260-4

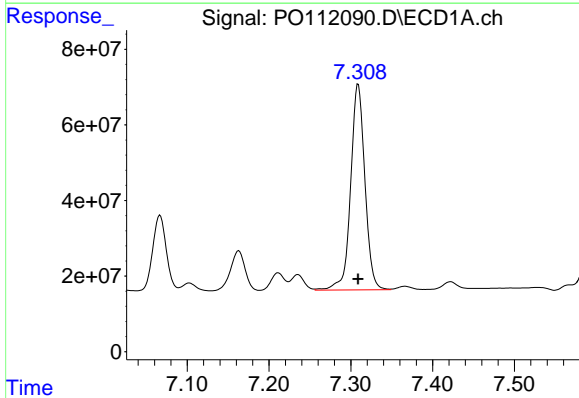
R.T.: 7.067 min
Delta R.T.: 0.000 min
Response: 228751380
Conc: 500.00 ng/ml

Instrument :
ECD_O
ClientSampleId :
AR1660ICC500



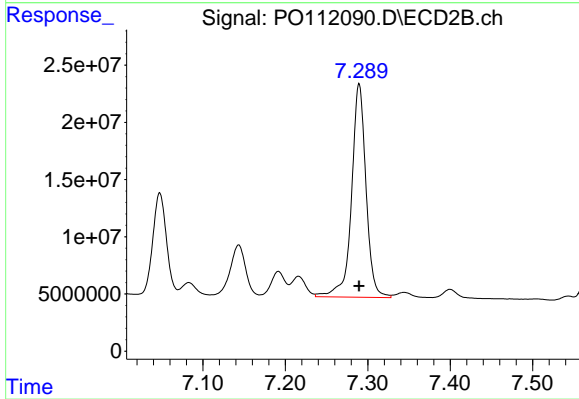
#34 AR-1260-4

R.T.: 7.048 min
Delta R.T.: 0.000 min
Response: 101583197
Conc: 500.00 ng/ml



#35 AR-1260-5

R.T.: 7.309 min
Delta R.T.: 0.000 min
Response: 658599875
Conc: 500.00 ng/ml



#35 AR-1260-5

R.T.: 7.290 min
Delta R.T.: 0.000 min
Response: 227956292
Conc: 500.00 ng/ml