

Data Path : Z:\pestpcbsrv\HPCHEM1\ECD\_0\Data\P0070825\  
 Data File : PO112092.D  
 Signal(s) : Signal #1: ECD1A.ch Signal #2: ECD2B.ch  
 Acq On : 08 Jul 2025 15:21  
 Operator : YP/AJ  
 Sample : AR1660ICC050  
 Misc :  
 ALS Vial : 7 Sample Multiplier: 1

Instrument :  
 ECD\_0  
 ClientSampleId :  
 AR1660ICC050

Integration File signal 1: autoint1.e  
 Integration File signal 2: autoint2.e  
 Quant Time: Jul 08 15:36:17 2025  
 Quant Method : Z:\pestpcbsrv\HPCHEM1\ECD\_0\methods\P0070825.M  
 Quant Title : GC EXTRACTABLES  
 QLast Update : Tue Jul 08 15:36:04 2025  
 Response via : Initial Calibration  
 Integrator: ChemStation

Volume Inj. : 2 µl  
 Signal #1 Phase : ZB-MR2 Signal #2 Phase: ZB-MR2  
 Signal #1 Info : 30Mx0.32mmx 0.50µ Signal #2 Info : 30M x 0.32mm x 0.25µm

Compound	RT#1	RT#2	Resp#1	Resp#2	ng/ml	ng/ml
-----						
System Monitoring Compounds						
1) SA Tetrachlo...	3.673	3.666	37442397	24163066	3.784	3.793
2) SA Decachlor...	8.703	8.650	27391770	6408552	4.006	3.715
Target Compounds						
3) L1 AR-1016-1	4.761	4.743	13802015	10149679	40.580	45.548
4) L1 AR-1016-2	4.780	4.761	19790298	14662938	39.796	44.555
5) L1 AR-1016-3	4.836	4.936	14195524	7549659	43.852	44.445
6) L1 AR-1016-4	4.956	4.979	10940244	6781238	42.602	49.416
7) L1 AR-1016-5	5.212	5.191	14240179	7528374	51.694	43.655
31) L7 AR-1260-1	6.251	6.220	59957659	21359833	120.174	76.207 #
32) L7 AR-1260-2	6.441	6.408	51044679	20093020	69.700	58.992
33) L7 AR-1260-3	6.806	6.559	29007819	11088040	44.254	40.234
34) L7 AR-1260-4	7.066	7.030	19317003	9814007	44.382	48.912
35) L7 AR-1260-5	7.309	7.272	50382935	20576692	39.906	45.958

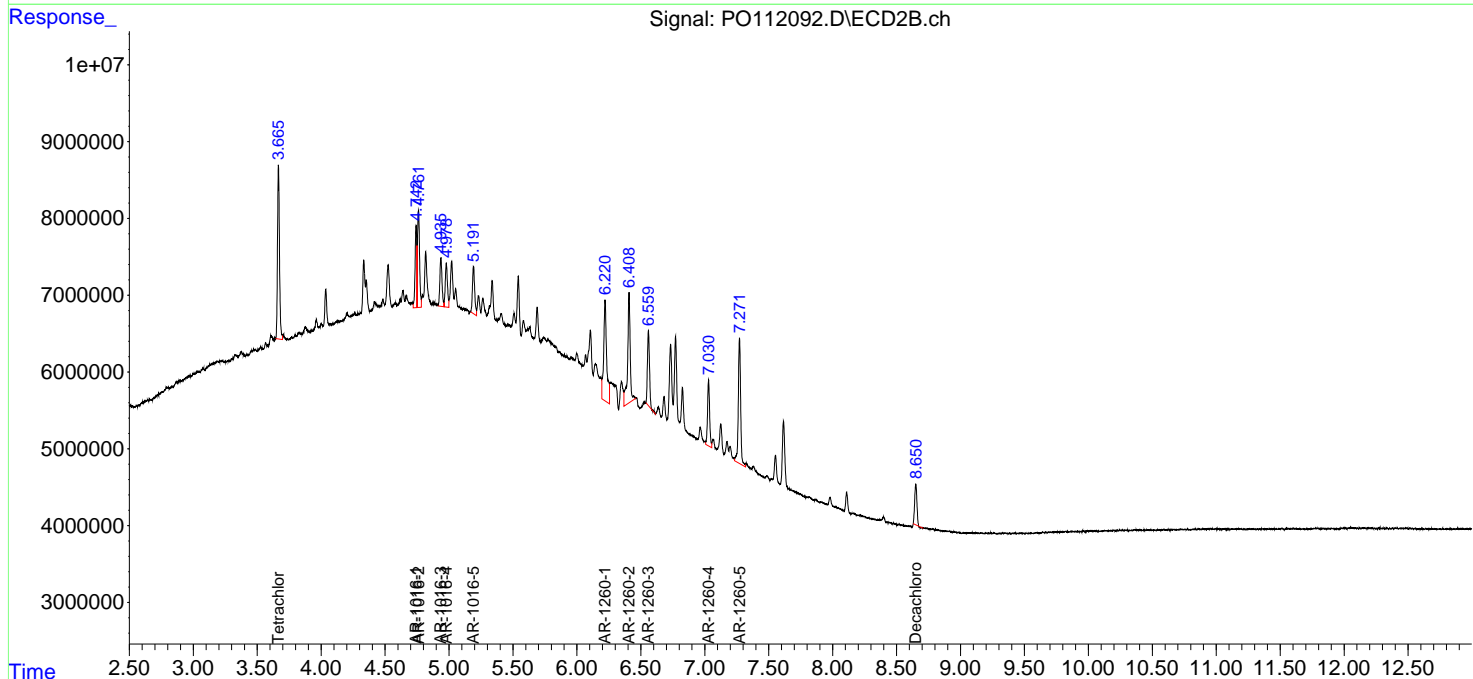
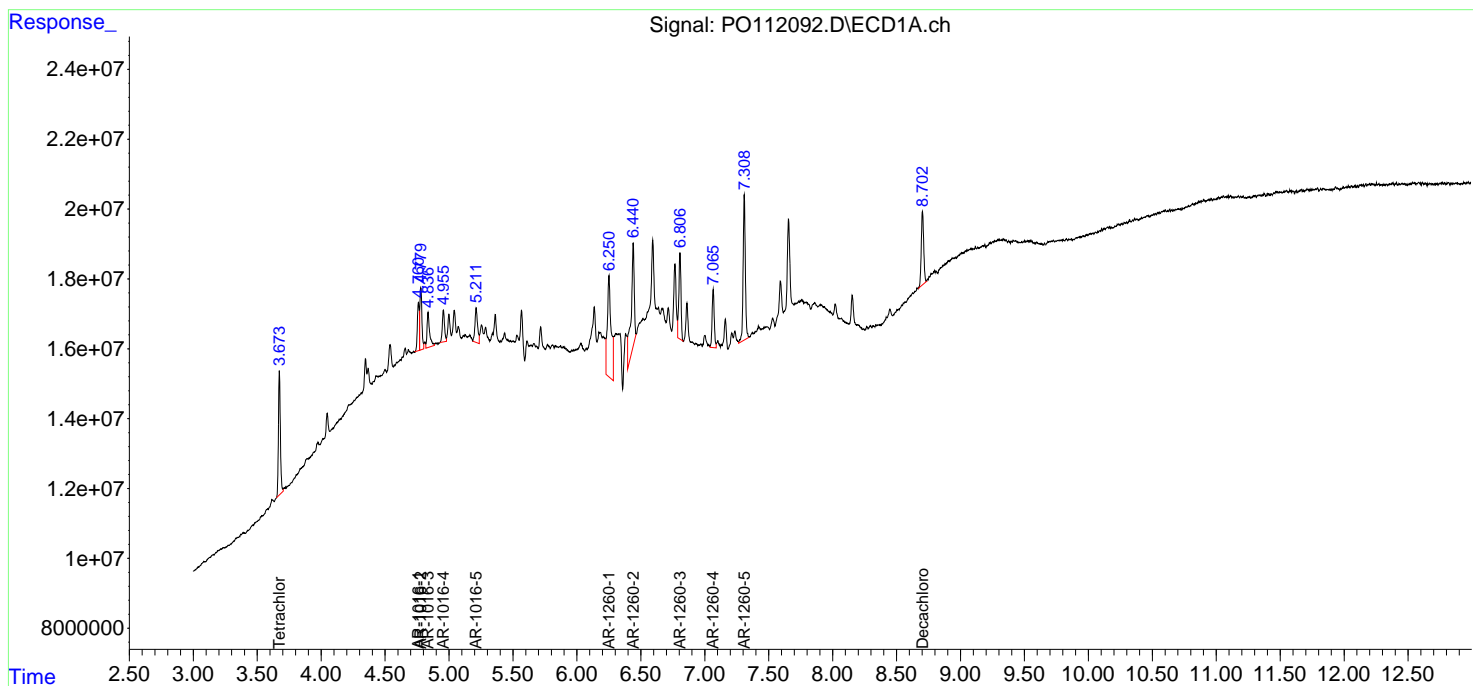
(f)=RT Delta > 1/2 Window (#)=Amounts differ by > 25% (m)=manual int.

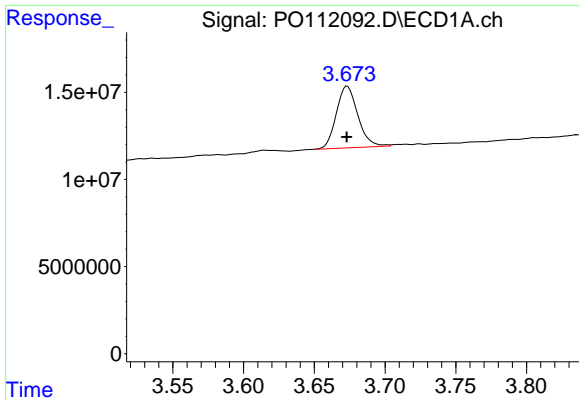
Data Path : Z:\pestpcbsrv\HPCHEM1\ECD\_O\Data\PO070825\  
 Data File : PO112092.D  
 Signal(s) : Signal #1: ECD1A.ch Signal #2: ECD2B.ch  
 Acq On : 08 Jul 2025 15:21  
 Operator : YP/AJ  
 Sample : AR1660ICC050  
 Misc :  
 ALS Vial : 7 Sample Multiplier: 1

Instrument :  
 ECD\_O  
 ClientSampleId :  
 AR1660ICC050

Integration File signal 1: autoint1.e  
 Integration File signal 2: autoint2.e  
 Quant Time: Jul 08 15:36:17 2025  
 Quant Method : Z:\pestpcbsrv\HPCHEM1\ECD\_O\methods\PO070825.M  
 Quant Title : GC EXTRACTABLES  
 QLast Update : Tue Jul 08 15:36:04 2025  
 Response via : Initial Calibration  
 Integrator: ChemStation

Volume Inj. : 2 µl  
 Signal #1 Phase : ZB-MR1 Signal #2 Phase: ZB-MR2  
 Signal #1 Info : 30Mx0.32mmx 0.50µ Signal #2 Info : 30M x 0.32mm x 0.25µm

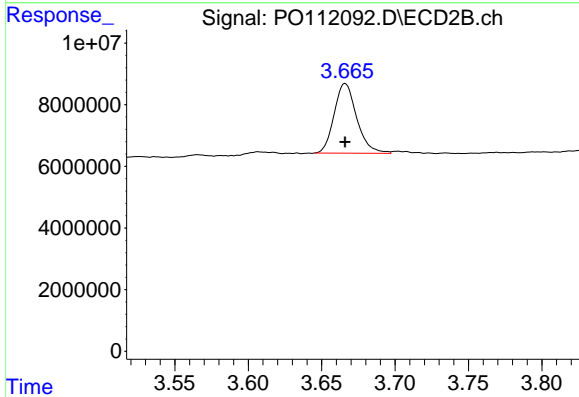




#1 Tetrachloro-m-xylene

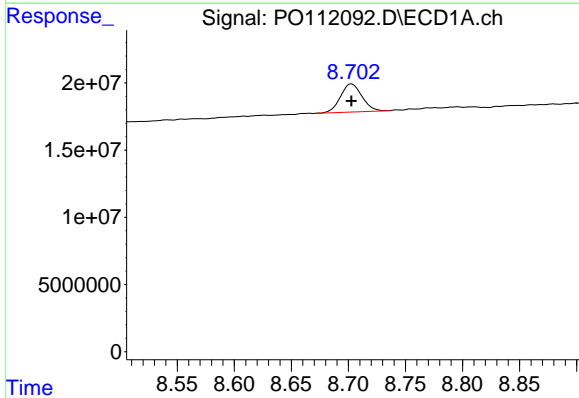
R.T.: 3.673 min  
 Delta R.T.: 0.000 min  
 Response: 37442397  
 Conc: 3.78 ng/ml

Instrument :  
 ECD\_O  
 ClientSampleId :  
 AR1660ICC050



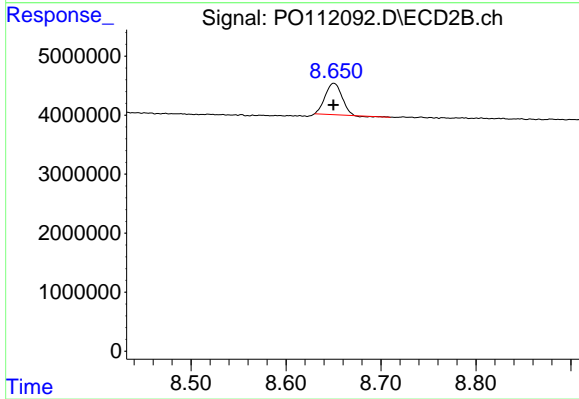
#1 Tetrachloro-m-xylene

R.T.: 3.666 min  
 Delta R.T.: 0.000 min  
 Response: 24163066  
 Conc: 3.79 ng/ml



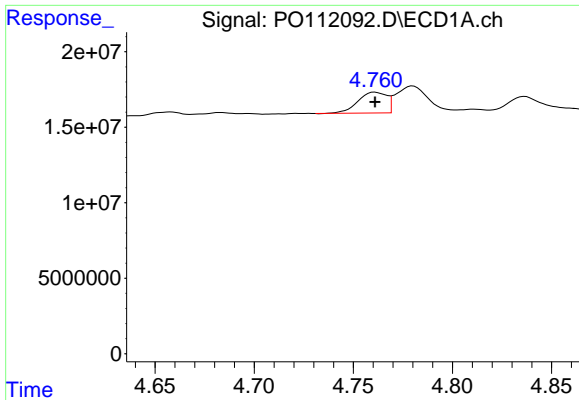
#2 Decachlorobiphenyl

R.T.: 8.703 min  
 Delta R.T.: 0.000 min  
 Response: 27391770  
 Conc: 4.01 ng/ml



#2 Decachlorobiphenyl

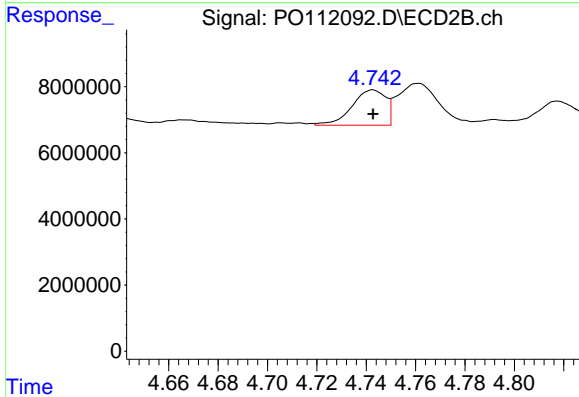
R.T.: 8.650 min  
 Delta R.T.: 0.000 min  
 Response: 6408552  
 Conc: 3.72 ng/ml



#3 AR-1016-1

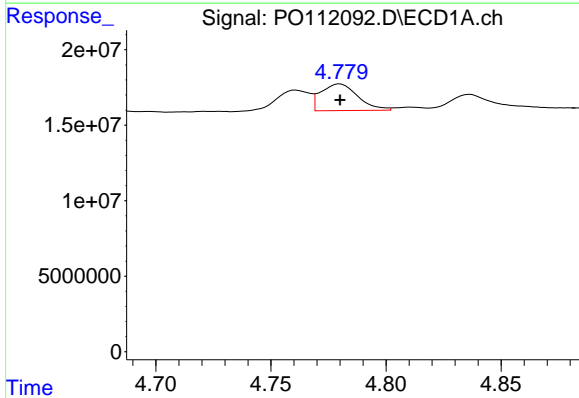
R.T.: 4.761 min  
 Delta R.T.: 0.000 min  
 Response: 13802015  
 Conc: 40.58 ng/ml

Instrument :  
 ECD\_O  
 ClientSampleId :  
 AR1660ICC050



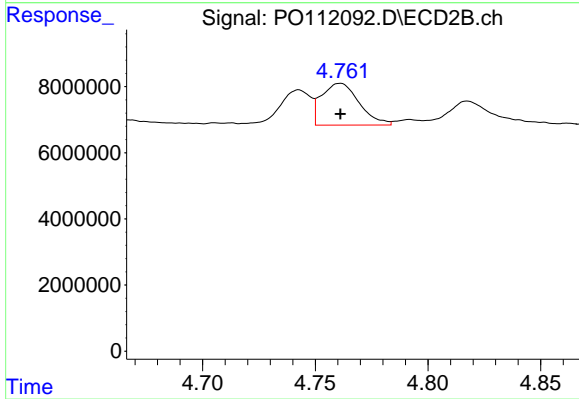
#3 AR-1016-1

R.T.: 4.743 min  
 Delta R.T.: 0.000 min  
 Response: 10149679  
 Conc: 45.55 ng/ml



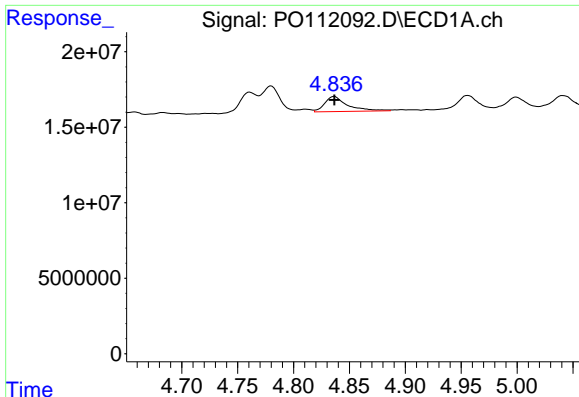
#4 AR-1016-2

R.T.: 4.780 min  
 Delta R.T.: 0.000 min  
 Response: 19790298  
 Conc: 39.80 ng/ml



#4 AR-1016-2

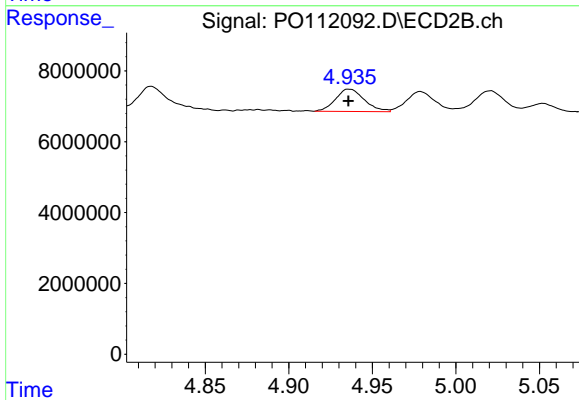
R.T.: 4.761 min  
 Delta R.T.: 0.000 min  
 Response: 14662938  
 Conc: 44.55 ng/ml



#5 AR-1016-3

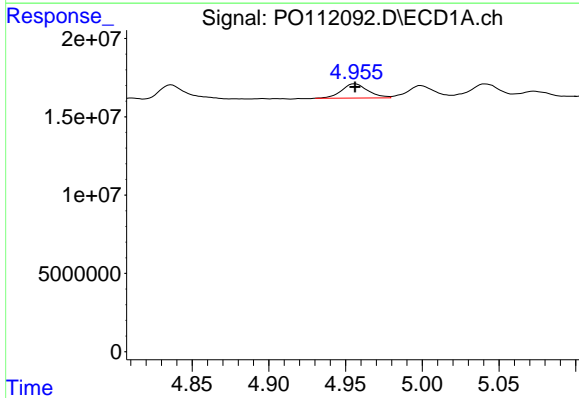
R.T.: 4.836 min  
 Delta R.T.: 0.000 min  
 Response: 14195524  
 Conc: 43.85 ng/ml

Instrument :  
 ECD\_O  
 ClientSampleId :  
 AR1660ICC050



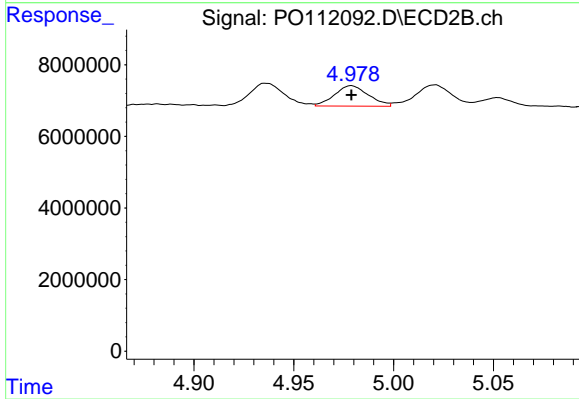
#5 AR-1016-3

R.T.: 4.936 min  
 Delta R.T.: 0.000 min  
 Response: 7549659  
 Conc: 44.44 ng/ml



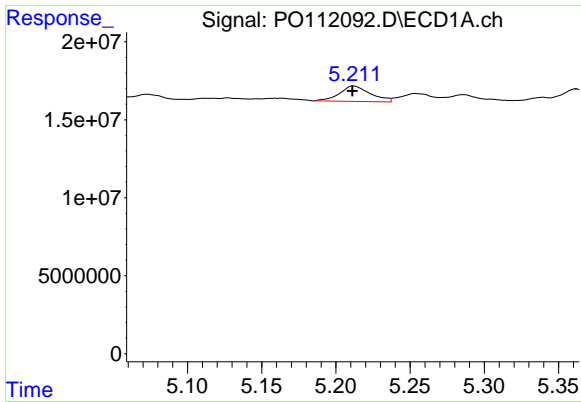
#6 AR-1016-4

R.T.: 4.956 min  
 Delta R.T.: 0.000 min  
 Response: 10940244  
 Conc: 42.60 ng/ml



#6 AR-1016-4

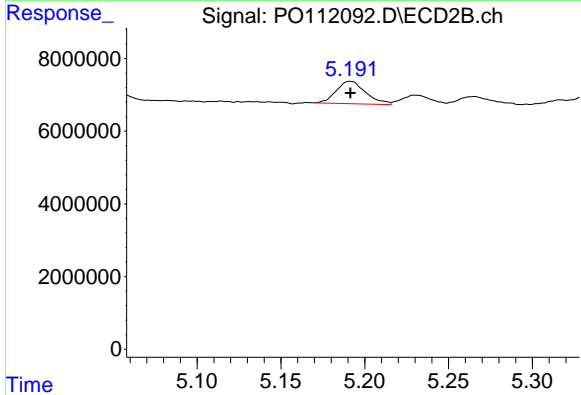
R.T.: 4.979 min  
 Delta R.T.: 0.000 min  
 Response: 6781238  
 Conc: 49.42 ng/ml



#7 AR-1016-5

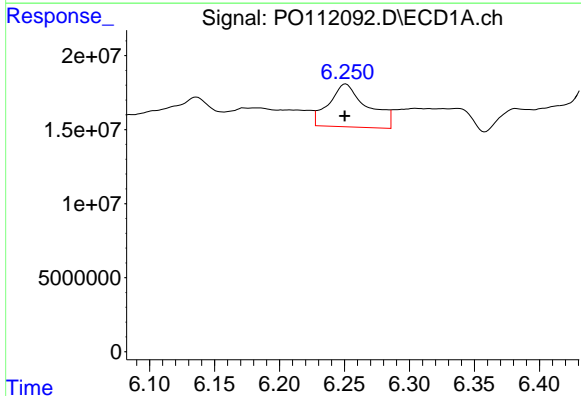
R.T.: 5.212 min  
 Delta R.T.: 0.000 min  
 Response: 14240179  
 Conc: 51.69 ng/ml

Instrument :  
 ECD\_O  
 ClientSampleId :  
 AR1660ICC050



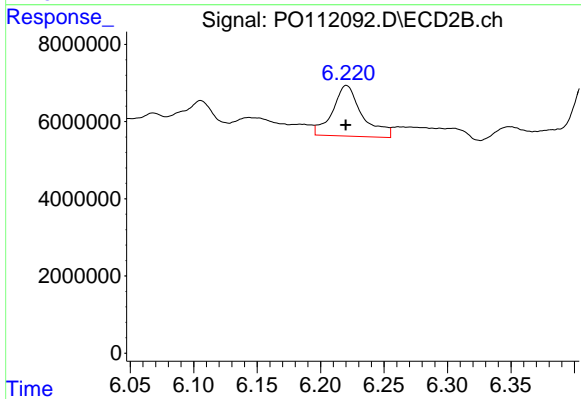
#7 AR-1016-5

R.T.: 5.191 min  
 Delta R.T.: 0.000 min  
 Response: 7528374  
 Conc: 43.66 ng/ml



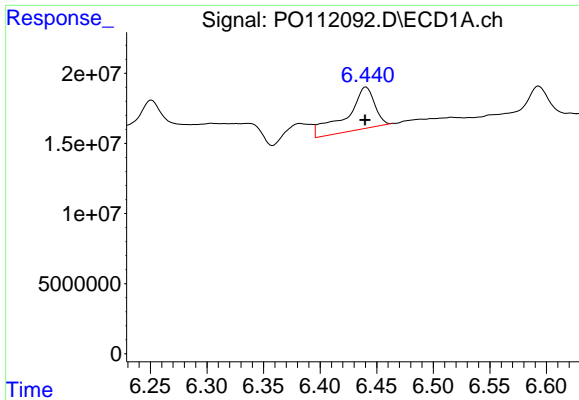
#31 AR-1260-1

R.T.: 6.251 min  
 Delta R.T.: 0.000 min  
 Response: 59957659  
 Conc: 120.17 ng/ml



#31 AR-1260-1

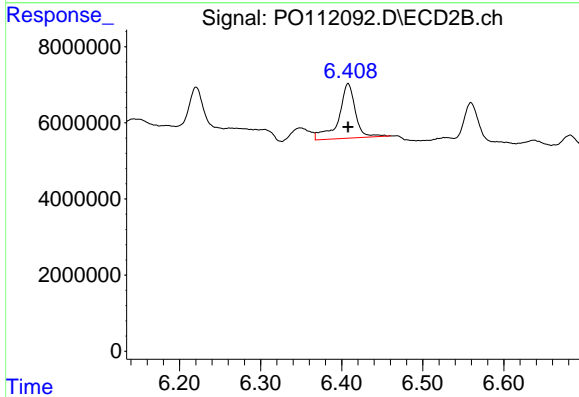
R.T.: 6.220 min  
 Delta R.T.: 0.000 min  
 Response: 21359833  
 Conc: 76.21 ng/ml



#32 AR-1260-2

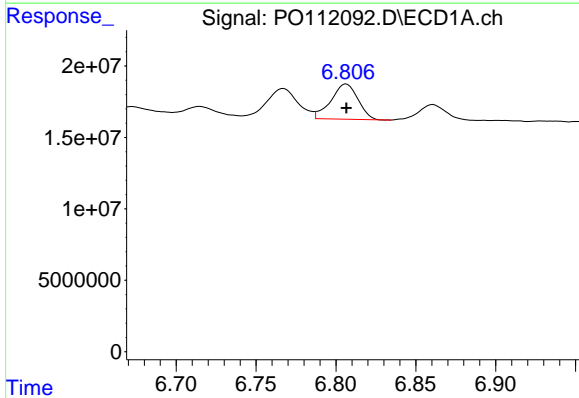
R.T.: 6.441 min  
 Delta R.T.: 0.000 min  
 Response: 51044679  
 Conc: 69.70 ng/ml

Instrument :  
 ECD\_O  
 ClientSampleId :  
 AR1660ICC050



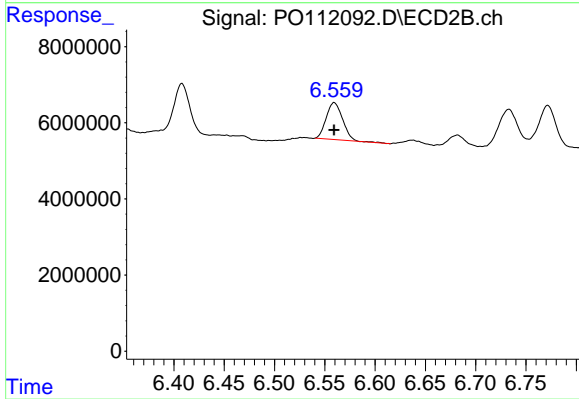
#32 AR-1260-2

R.T.: 6.408 min  
 Delta R.T.: 0.000 min  
 Response: 20093020  
 Conc: 58.99 ng/ml



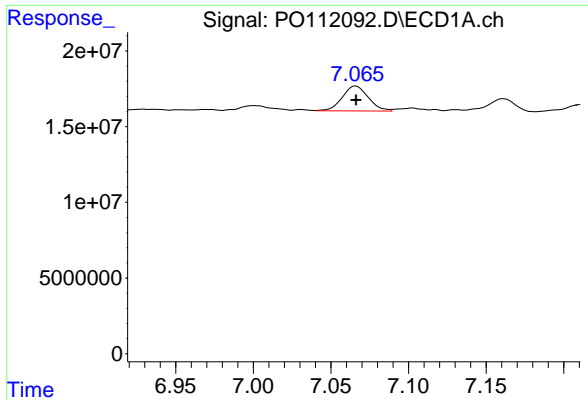
#33 AR-1260-3

R.T.: 6.806 min  
 Delta R.T.: 0.000 min  
 Response: 29007819  
 Conc: 44.25 ng/ml



#33 AR-1260-3

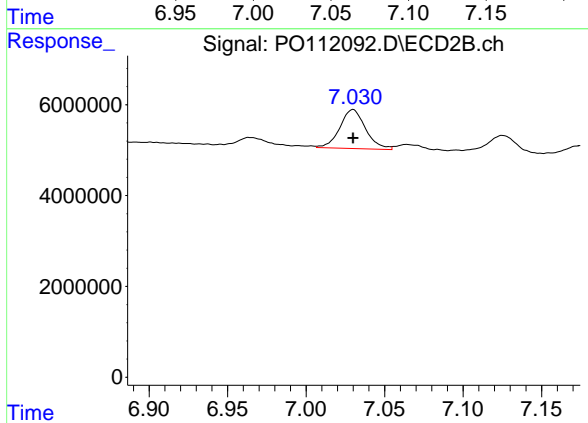
R.T.: 6.559 min  
 Delta R.T.: 0.000 min  
 Response: 11088040  
 Conc: 40.23 ng/ml



#34 AR-1260-4

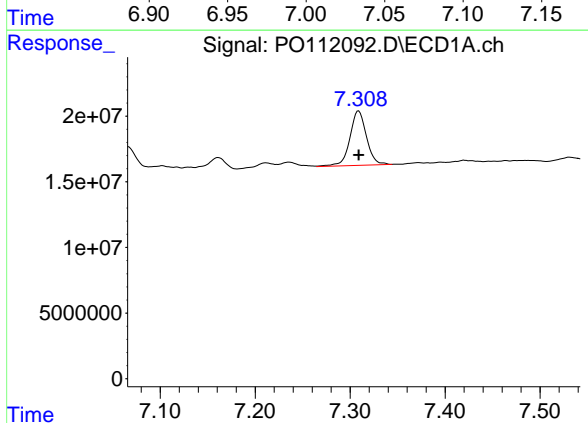
R.T.: 7.066 min  
 Delta R.T.: 0.000 min  
 Response: 19317003  
 Conc: 44.38 ng/ml

Instrument :  
 ECD\_O  
 ClientSampleId :  
 AR1660ICC050



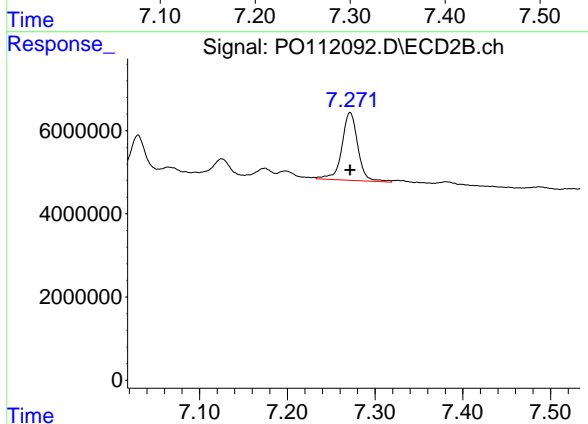
#34 AR-1260-4

R.T.: 7.030 min  
 Delta R.T.: 0.000 min  
 Response: 9814007  
 Conc: 48.91 ng/ml



#35 AR-1260-5

R.T.: 7.309 min  
 Delta R.T.: 0.000 min  
 Response: 50382935  
 Conc: 39.91 ng/ml



#35 AR-1260-5

R.T.: 7.272 min  
 Delta R.T.: 0.000 min  
 Response: 20576692  
 Conc: 45.96 ng/ml