

Data Path : Z:\pestpcbsrv\HPCHEM1\ECD_0\Data\P0070825\
 Data File : P0112093.D
 Signal(s) : Signal #1: ECD1A.ch Signal #2: ECD2B.ch
 Acq On : 08 Jul 2025 15:38
 Operator : YP/AJ
 Sample : AR1221ICC500
 Misc :
 ALS Vial : 8 Sample Multiplier: 1

Instrument :
 ECD_0
ClientSampleId :
 AR1221ICC500

Integration File signal 1: autoint1.e
 Integration File signal 2: autoint2.e
 Quant Time: Jul 09 02:15:50 2025
 Quant Method : Z:\pestpcbsrv\HPCHEM1\ECD_0\methods\P0070825.M
 Quant Title : GC EXTRACTABLES
 QLast Update : Wed Jul 09 02:08:52 2025
 Response via : Initial Calibration
 Integrator: ChemStation

Volume Inj. : 2 µl
 Signal #1 Phase : ZB-MR1 Signal #2 Phase: ZB-MR2
 Signal #1 Info : 30Mx0.32mmx 0.50µ Signal #2 Info : 30M x 0.32mm x 0.25µm

Compound	RT#1	RT#2	Resp#1	Resp#2	ng/ml	ng/ml

System Monitoring Compounds						
1) SA Tetrachlo...	3.671	3.666	491.3E6	310.8E6	50.000	50.000
2) SA Decachlor...	8.701	8.649	354.6E6	89358669	50.000	50.000
Target Compounds						
8) L2 AR-1221-1	3.883	3.875	58306973	41147512	500.000	500.000
9) L2 AR-1221-2	3.969	3.960	39420252	29676775	500.000	500.000
10) L2 AR-1221-3	4.045	4.036	134.8E6	94388324	500.000	500.000

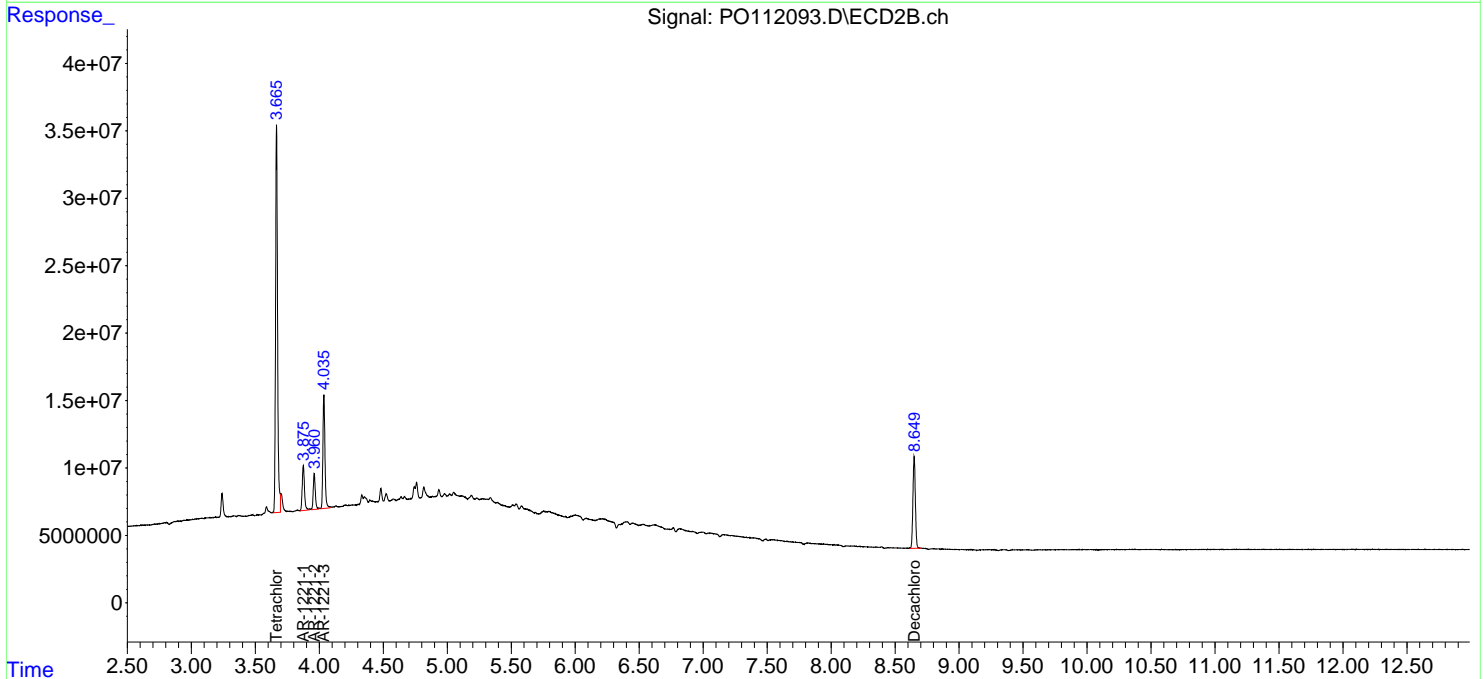
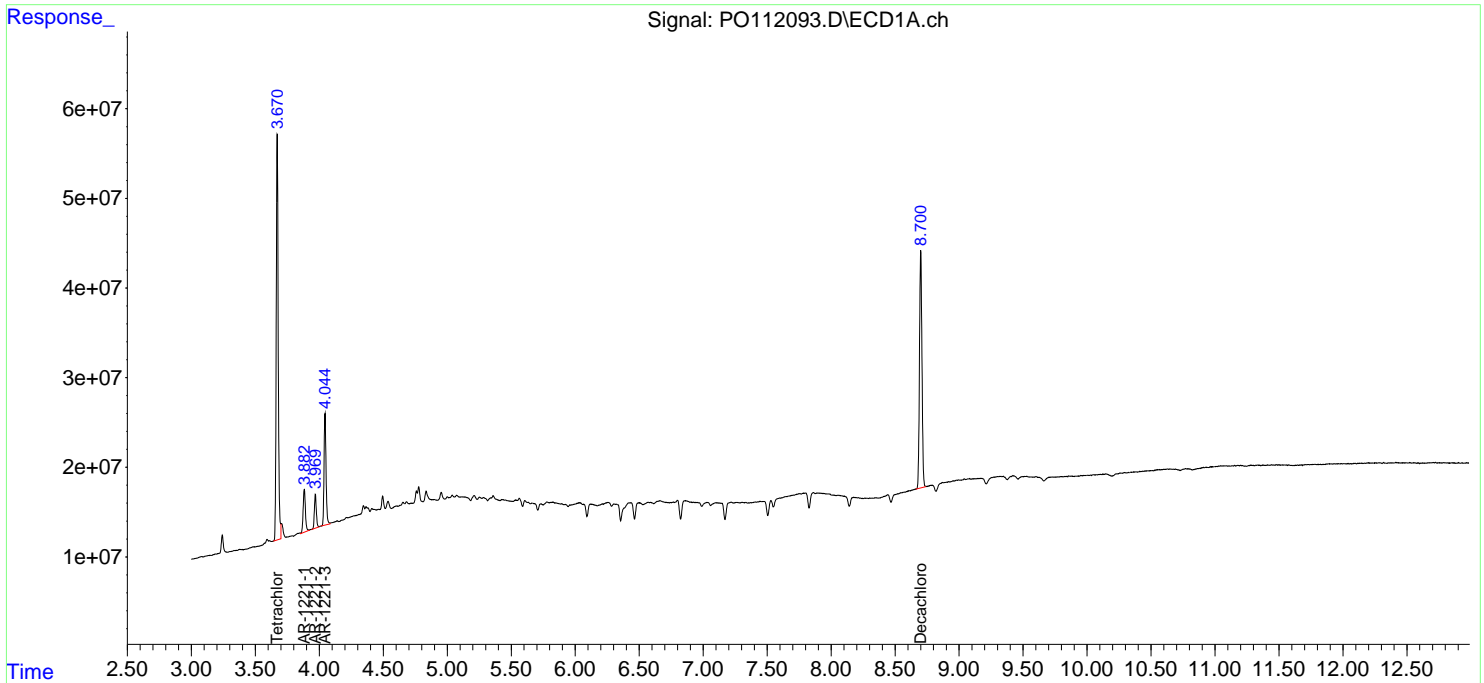
(f)=RT Delta > 1/2 Window (#)=Amounts differ by > 25% (m)=manual int.

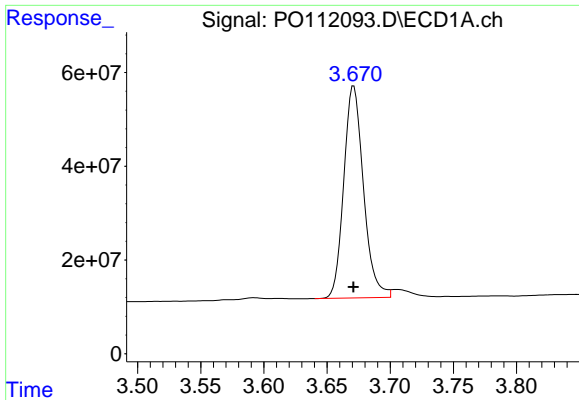
Data Path : Z:\pestpcbsrv\HPCHEM1\ECD_O\Data\P0070825\
 Data File : P0112093.D
 Signal(s) : Signal #1: ECD1A.ch Signal #2: ECD2B.ch
 Acq On : 08 Jul 2025 15:38
 Operator : YP/AJ
 Sample : AR1221ICC500
 Misc :
 ALS Vial : 8 Sample Multiplier: 1

Instrument :
 ECD_O
 ClientSampleId :
 AR1221ICC500

Integration File signal 1: autoint1.e
 Integration File signal 2: autoint2.e
 Quant Time: Jul 09 02:15:50 2025
 Quant Method : Z:\pestpcbsrv\HPCHEM1\ECD_O\methods\P0070825.M
 Quant Title : GC EXTRACTABLES
 QLast Update : Wed Jul 09 02:08:52 2025
 Response via : Initial Calibration
 Integrator: ChemStation

Volume Inj. : 2 µl
 Signal #1 Phase : ZB-MR1 Signal #2 Phase: ZB-MR2
 Signal #1 Info : 30Mx0.32mmx 0.50µm Signal #2 Info : 30M x 0.32mm x 0.25µm

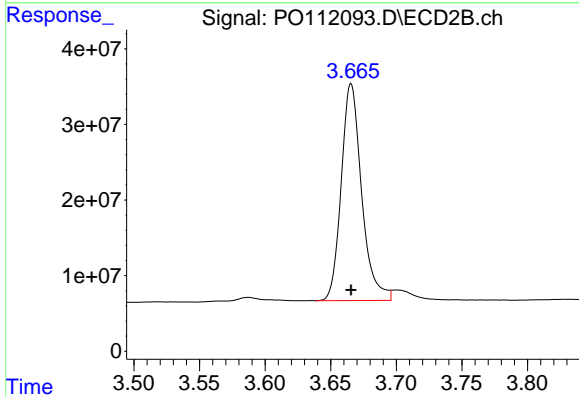




#1 Tetrachloro-m-xylene

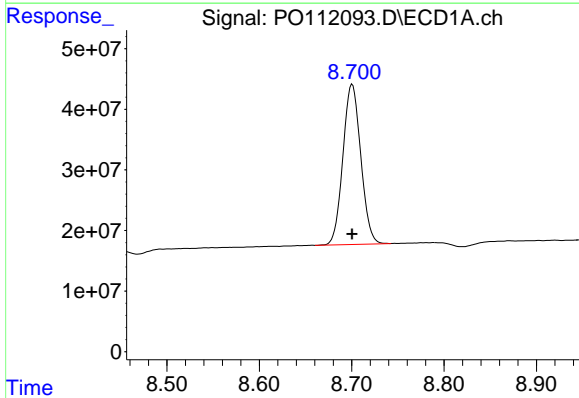
R.T.: 3.671 min
Delta R.T.: 0.000 min
Response: 491308255
Conc: 50.00 ng/ml

Instrument :
ECD_O
ClientSampleId :
AR1221ICC500



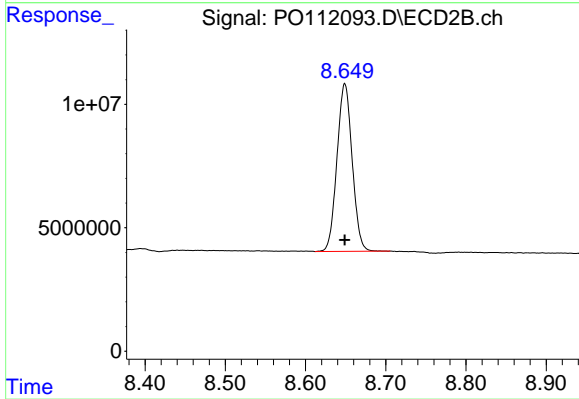
#1 Tetrachloro-m-xylene

R.T.: 3.666 min
Delta R.T.: 0.000 min
Response: 310794942
Conc: 50.00 ng/ml



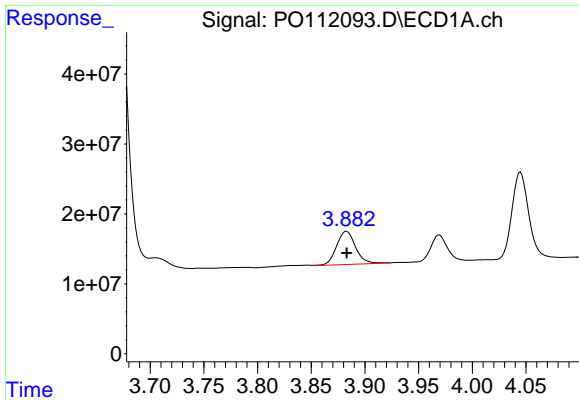
#2 Decachlorobiphenyl

R.T.: 8.701 min
Delta R.T.: 0.000 min
Response: 354582449
Conc: 50.00 ng/ml



#2 Decachlorobiphenyl

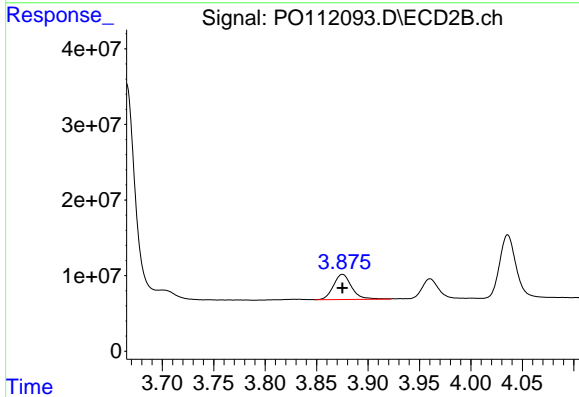
R.T.: 8.649 min
Delta R.T.: 0.000 min
Response: 89358669
Conc: 50.00 ng/ml



#8 AR-1221-1

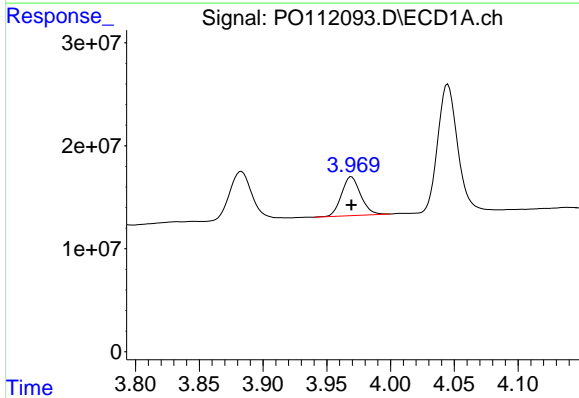
R.T.: 3.883 min
 Delta R.T.: 0.000 min
 Response: 58306973
 Conc: 500.00 ng/ml

Instrument :
 ECD_O
 ClientSampleId :
 AR1221ICC500



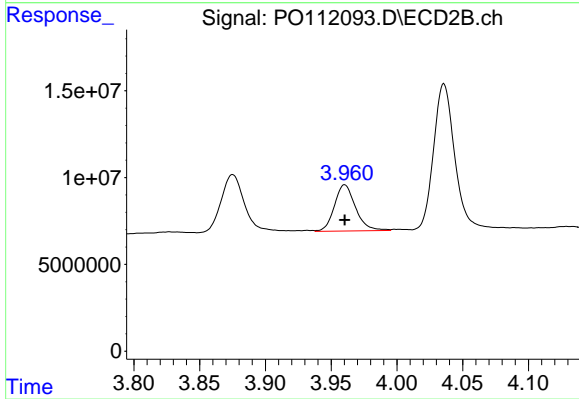
#8 AR-1221-1

R.T.: 3.875 min
 Delta R.T.: 0.000 min
 Response: 41147512
 Conc: 500.00 ng/ml



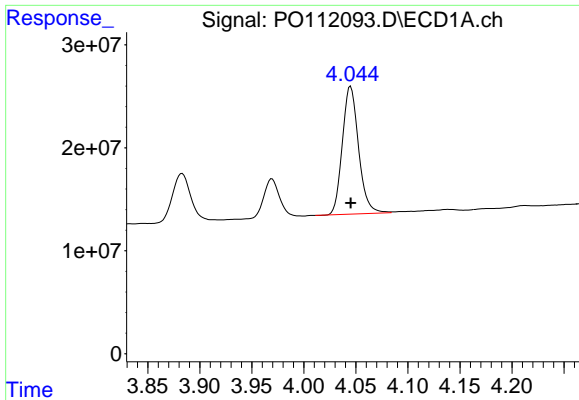
#9 AR-1221-2

R.T.: 3.969 min
 Delta R.T.: 0.000 min
 Response: 39420252
 Conc: 500.00 ng/ml



#9 AR-1221-2

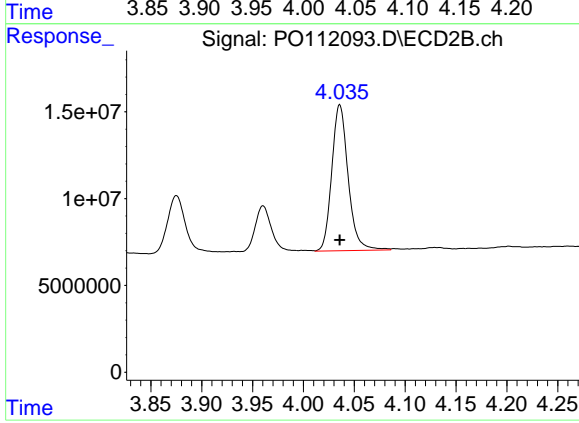
R.T.: 3.960 min
 Delta R.T.: 0.000 min
 Response: 29676775
 Conc: 500.00 ng/ml



#10 AR-1221-3

R.T.: 4.045 min
Delta R.T.: 0.000 min
Response: 134790876
Conc: 500.00 ng/ml

Instrument :
ECD_O
ClientSampleId :
AR1221ICC500



#10 AR-1221-3

R.T.: 4.036 min
Delta R.T.: 0.000 min
Response: 94388324
Conc: 500.00 ng/ml