

Data Path : Z:\pestpcbsrv\HPCHEM1\ECD\_0\Data\P0070825\  
 Data File : PO112094.D  
 Signal(s) : Signal #1: ECD1A.ch Signal #2: ECD2B.ch  
 Acq On : 08 Jul 2025 15:57  
 Operator : YP/AJ  
 Sample : AR1232ICC500  
 Misc :  
 ALS Vial : 9 Sample Multiplier: 1

Instrument :  
 ECD\_0  
 ClientSampleId :  
 AR1232ICC500

Integration File signal 1: autoint1.e  
 Integration File signal 2: autoint2.e  
 Quant Time: Jul 09 02:23:21 2025  
 Quant Method : Z:\pestpcbsrv\HPCHEM1\ECD\_0\methods\P0070825.M  
 Quant Title : GC EXTRACTABLES  
 QLast Update : Wed Jul 09 02:18:55 2025  
 Response via : Initial Calibration  
 Integrator: ChemStation

Volume Inj. : 2 µl  
 Signal #1 Phase : ZB-MR1 Signal #2 Phase: ZB-MR2  
 Signal #1 Info : 30Mx0.32mmx 0.50µ Signal #2 Info : 30M x 0.32mm x 0.25µm

Compound	RT#1	RT#2	Resp#1	Resp#2	ng/ml	ng/ml
-----						
System Monitoring Compounds						
1) SA Tetrachlo...	3.673	3.667	508.1E6	328.2E6	50.000	50.000
2) SA Decachlor...	8.703	8.649	348.2E6	88061507	50.000	50.000
Target Compounds						
11) L3 AR-1232-1	4.047	4.036	107.3E6	75049686	500.000	500.000
12) L3 AR-1232-2	4.539	4.761	56818484	76542867	500.000	500.000
13) L3 AR-1232-3	4.780	4.936	114.5E6	37753016	500.000	500.000
14) L3 AR-1232-4	4.956	5.021	57148344	32994097	500.000	500.000
15) L3 AR-1232-5	4.999	5.191	36700121	37129963	500.000	500.000
-----						

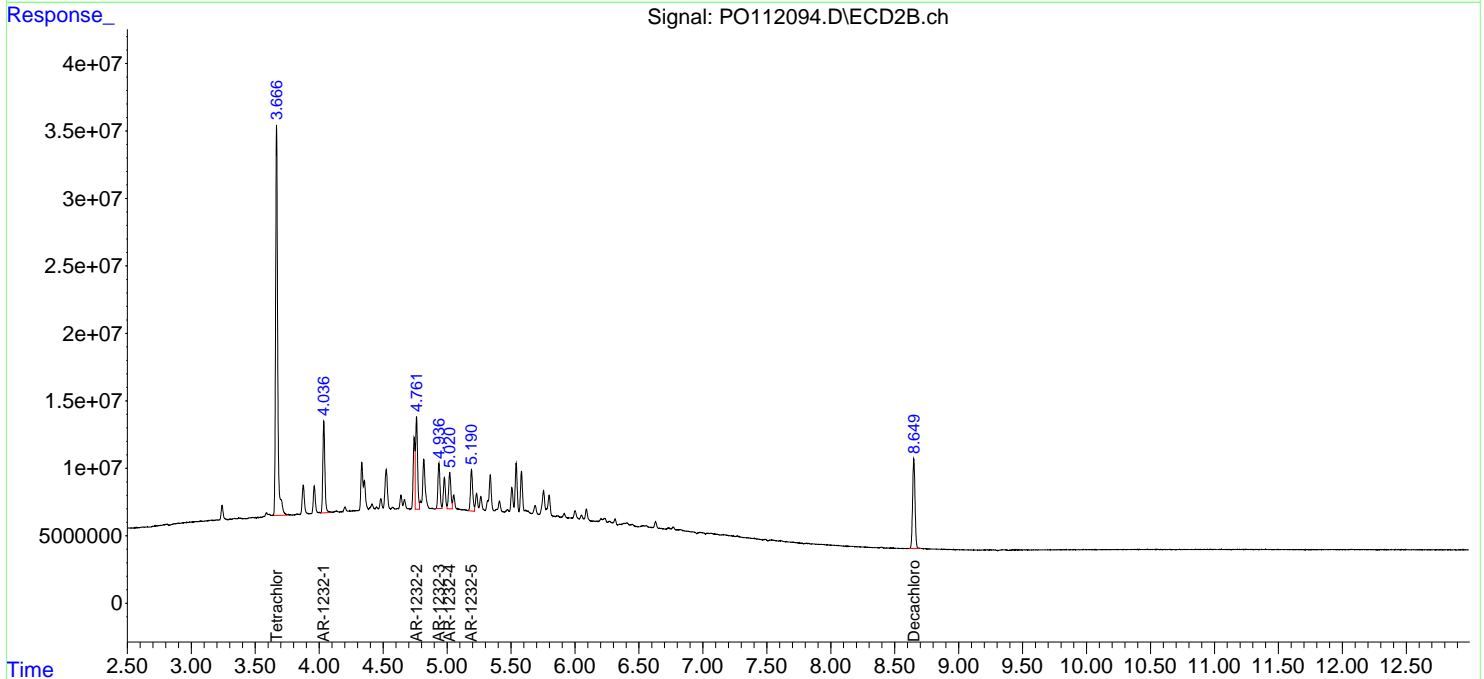
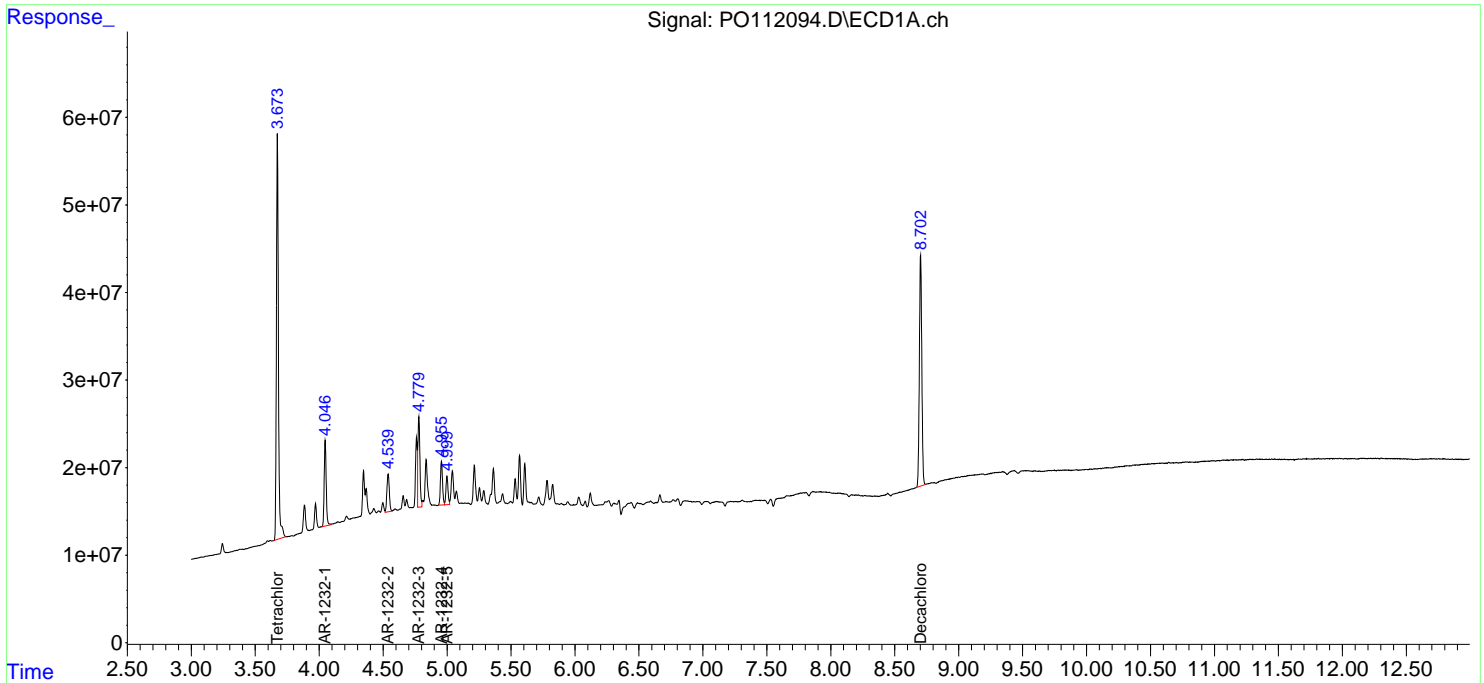
(f)=RT Delta > 1/2 Window (#)=Amounts differ by > 25% (m)=manual int.

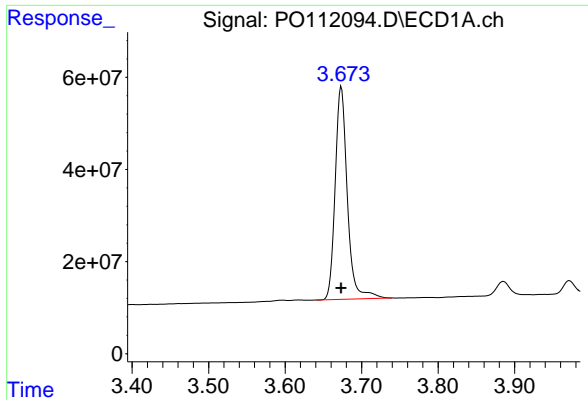
Data Path : Z:\pestpcbsrv\HPCHEM1\ECD\_O\Data\PO070825\  
 Data File : PO112094.D  
 Signal(s) : Signal #1: ECD1A.ch Signal #2: ECD2B.ch  
 Acq On : 08 Jul 2025 15:57  
 Operator : YP/AJ  
 Sample : AR1232ICC500  
 Misc :  
 ALS Vial : 9 Sample Multiplier: 1

Instrument :  
 ECD\_O  
 ClientSampleId :  
 AR1232ICC500

Integration File signal 1: autoint1.e  
 Integration File signal 2: autoint2.e  
 Quant Time: Jul 09 02:23:21 2025  
 Quant Method : Z:\pestpcbsrv\HPCHEM1\ECD\_O\methods\PO070825.M  
 Quant Title : GC EXTRACTABLES  
 QLast Update : Wed Jul 09 02:18:55 2025  
 Response via : Initial Calibration  
 Integrator: ChemStation

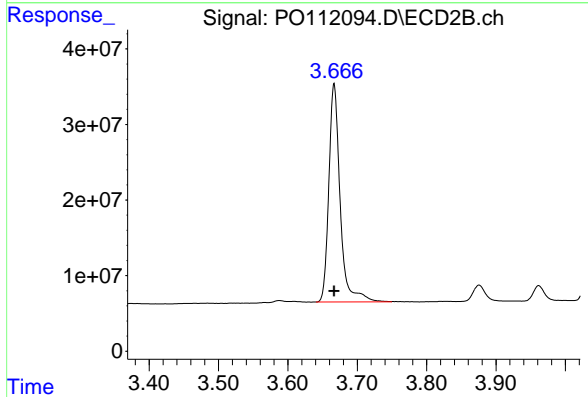
Volume Inj. : 2 µl  
 Signal #1 Phase : ZB-MR1 Signal #2 Phase: ZB-MR2  
 Signal #1 Info : 30Mx0.32mmx 0.50µ Signal #2 Info : 30M x 0.32mm x 0.25µm



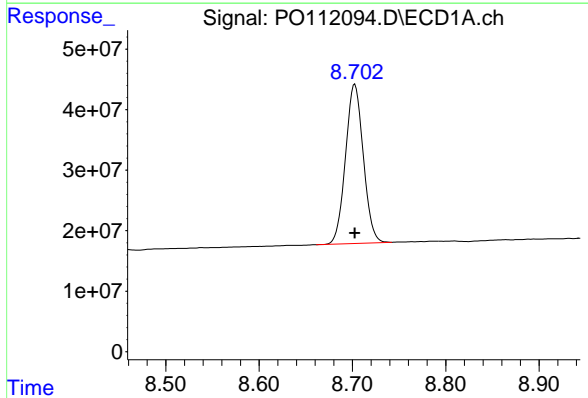


#1 Tetrachloro-m-xylene  
 R.T.: 3.673 min  
 Delta R.T.: 0.000 min  
 Response: 508090487  
 Conc: 50.00 ng/ml

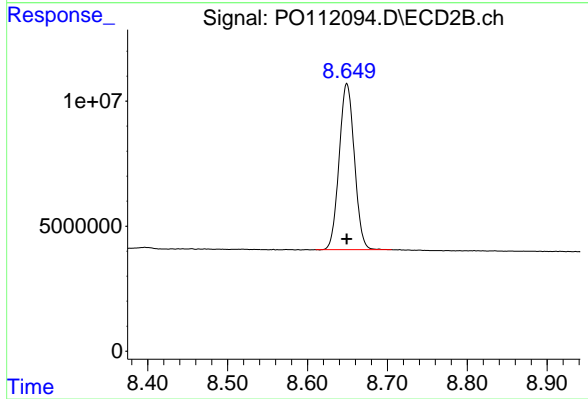
Instrument :  
 ECD\_O  
 ClientSampleId :  
 AR1232ICC500



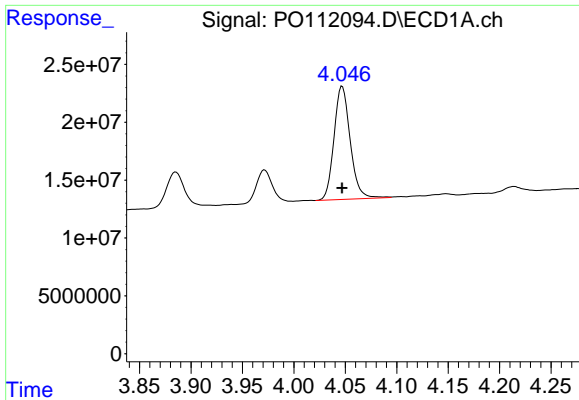
#1 Tetrachloro-m-xylene  
 R.T.: 3.667 min  
 Delta R.T.: 0.000 min  
 Response: 328240519  
 Conc: 50.00 ng/ml



#2 Decachlorobiphenyl  
 R.T.: 8.703 min  
 Delta R.T.: 0.000 min  
 Response: 348200291  
 Conc: 50.00 ng/ml



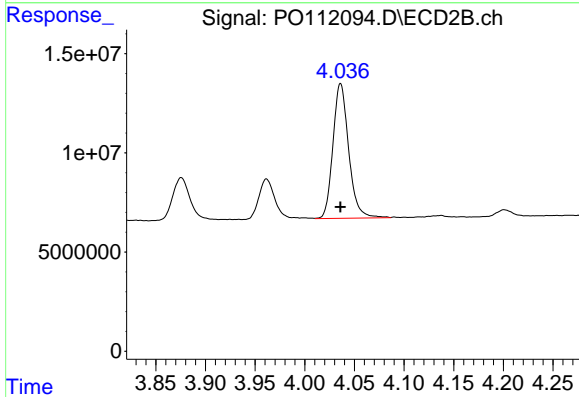
#2 Decachlorobiphenyl  
 R.T.: 8.649 min  
 Delta R.T.: 0.000 min  
 Response: 88061507  
 Conc: 50.00 ng/ml



#11 AR-1232-1

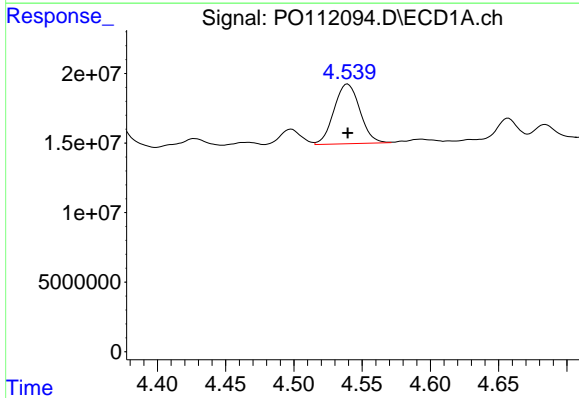
R.T.: 4.047 min  
 Delta R.T.: 0.000 min  
 Response: 107333865  
 Conc: 500.00 ng/ml

Instrument :  
 ECD\_O  
 ClientSampleId :  
 AR1232ICC500



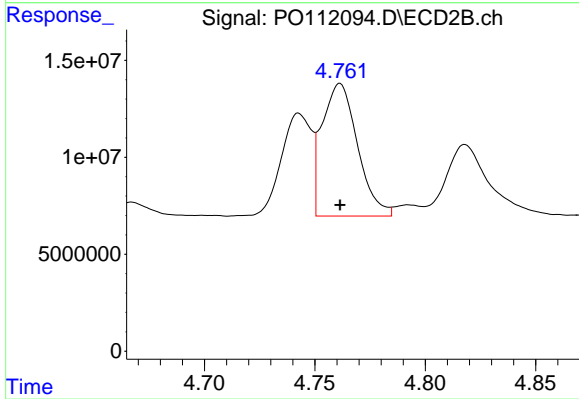
#11 AR-1232-1

R.T.: 4.036 min  
 Delta R.T.: 0.000 min  
 Response: 75049686  
 Conc: 500.00 ng/ml



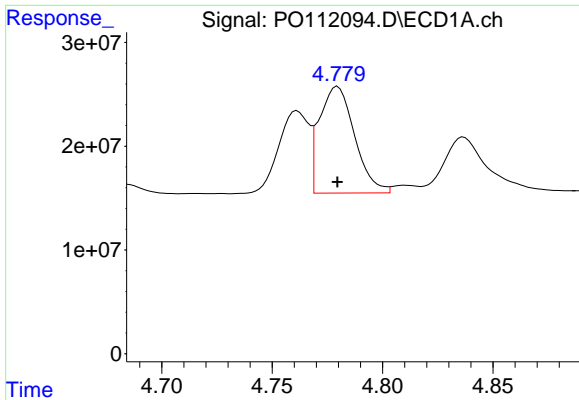
#12 AR-1232-2

R.T.: 4.539 min  
 Delta R.T.: 0.000 min  
 Response: 56818484  
 Conc: 500.00 ng/ml



#12 AR-1232-2

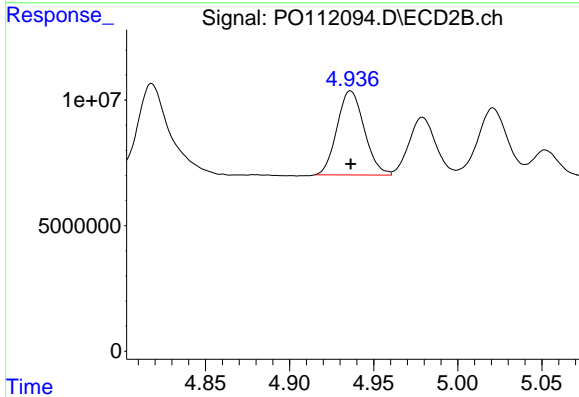
R.T.: 4.761 min  
 Delta R.T.: 0.000 min  
 Response: 76542867  
 Conc: 500.00 ng/ml



#13 AR-1232-3

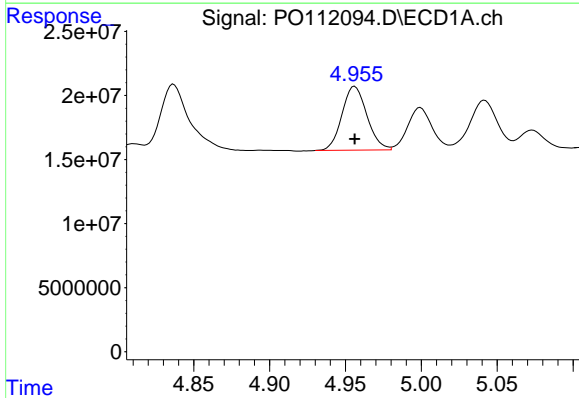
R.T.: 4.780 min  
 Delta R.T.: 0.000 min  
 Response: 114504426  
 Conc: 500.00 ng/ml

Instrument :  
 ECD\_O  
 ClientSampleId :  
 AR1232ICC500



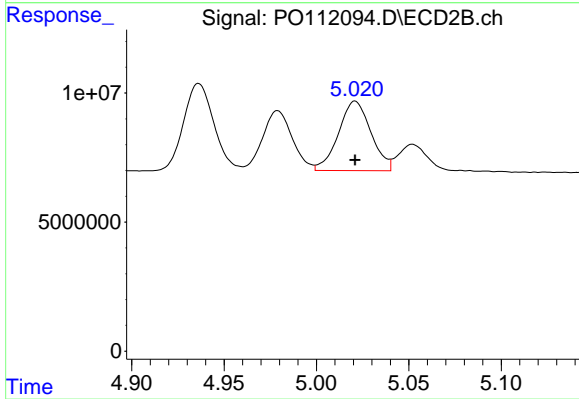
#13 AR-1232-3

R.T.: 4.936 min  
 Delta R.T.: 0.000 min  
 Response: 37753016  
 Conc: 500.00 ng/ml



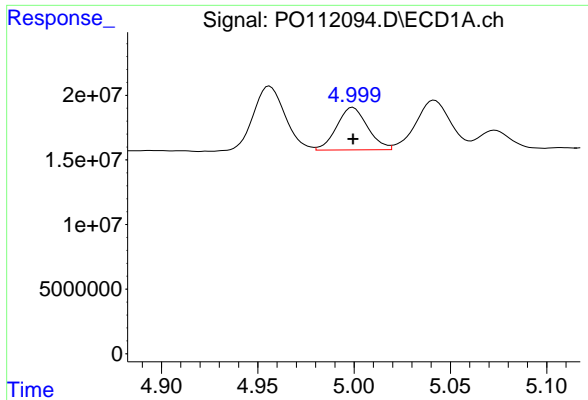
#14 AR-1232-4

R.T.: 4.956 min  
 Delta R.T.: 0.000 min  
 Response: 57148344  
 Conc: 500.00 ng/ml



#14 AR-1232-4

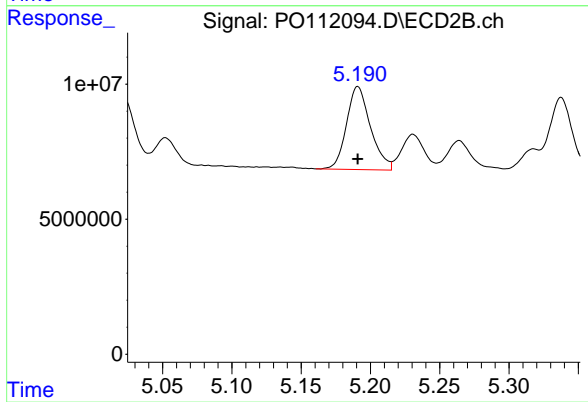
R.T.: 5.021 min  
 Delta R.T.: 0.000 min  
 Response: 32994097  
 Conc: 500.00 ng/ml



#15 AR-1232-5

R.T.: 4.999 min  
Delta R.T.: 0.000 min  
Response: 36700121  
Conc: 500.00 ng/ml

Instrument :  
ECD\_O  
ClientSampleId :  
AR1232ICC500



#15 AR-1232-5

R.T.: 5.191 min  
Delta R.T.: 0.000 min  
Response: 37129963  
Conc: 500.00 ng/ml