

Data Path : Z:\pestpcbsrv\HPCHEM1\ECD_0\Data\P0070825\
 Data File : PO112095.D
 Signal(s) : Signal #1: ECD1A.ch Signal #2: ECD2B.ch
 Acq On : 08 Jul 2025 16:15
 Operator : YP/AJ
 Sample : AR1242ICC1000
 Misc :
 ALS Vial : 10 Sample Multiplier: 1

Instrument :
 ECD_0
 ClientSampleId :
 AR1242ICC1000

Integration File signal 1: autoint1.e
 Integration File signal 2: autoint2.e
 Quant Time: Jul 09 02:30:35 2025
 Quant Method : Z:\pestpcbsrv\HPCHEM1\ECD_0\methods\P0070825.M
 Quant Title : GC EXTRACTABLES
 QLast Update : Wed Jul 09 02:27:13 2025
 Response via : Initial Calibration
 Integrator: ChemStation

Volume Inj. : 2 µl
 Signal #1 Phase : ZB-MR1 Signal #2 Phase: ZB-MR2
 Signal #1 Info : 30Mx0.32mmx 0.50µ Signal #2 Info : 30M x 0.32mm x 0.25µm

Compound	RT#1	RT#2	Resp#1	Resp#2	ng/ml	ng/ml

System Monitoring Compounds						
1) SA Tetrachlo...	3.674	3.667	1004.8E6	640.9E6	95.343	95.216
2) SA Decachlor...	8.703	8.651	698.0E6	169.5E6	97.460	94.180
Target Compounds						
16) L4 AR-1242-1	4.761	4.744	285.0E6	180.6E6	941.908	920.490
17) L4 AR-1242-2	4.780	4.762	425.0E6	267.1E6	945.333	925.046
18) L4 AR-1242-3	4.837	4.937	267.3E6	139.4E6	930.232	929.182
19) L4 AR-1242-4	4.957	5.022	217.5E6	132.6E6	938.623	923.575
20) L4 AR-1242-5	5.608	5.541	218.4E6	169.3E6	972.805	904.772

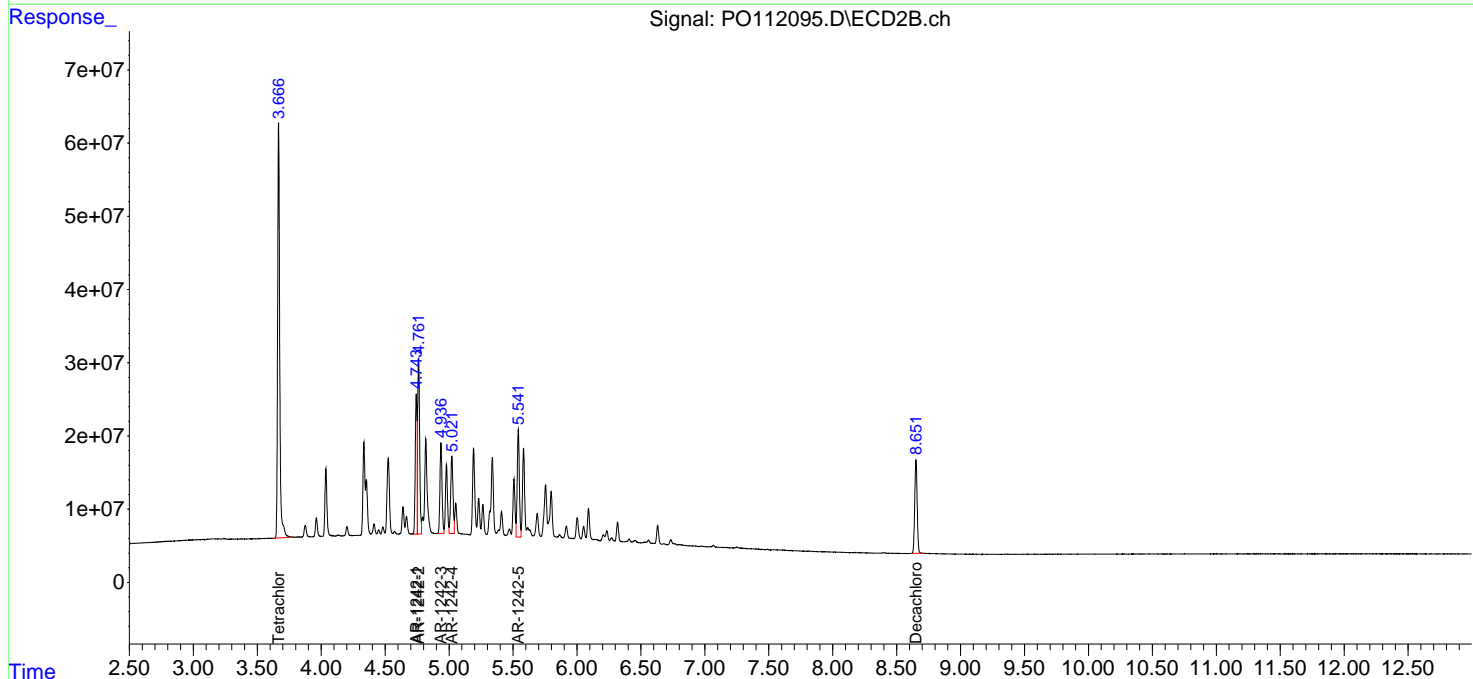
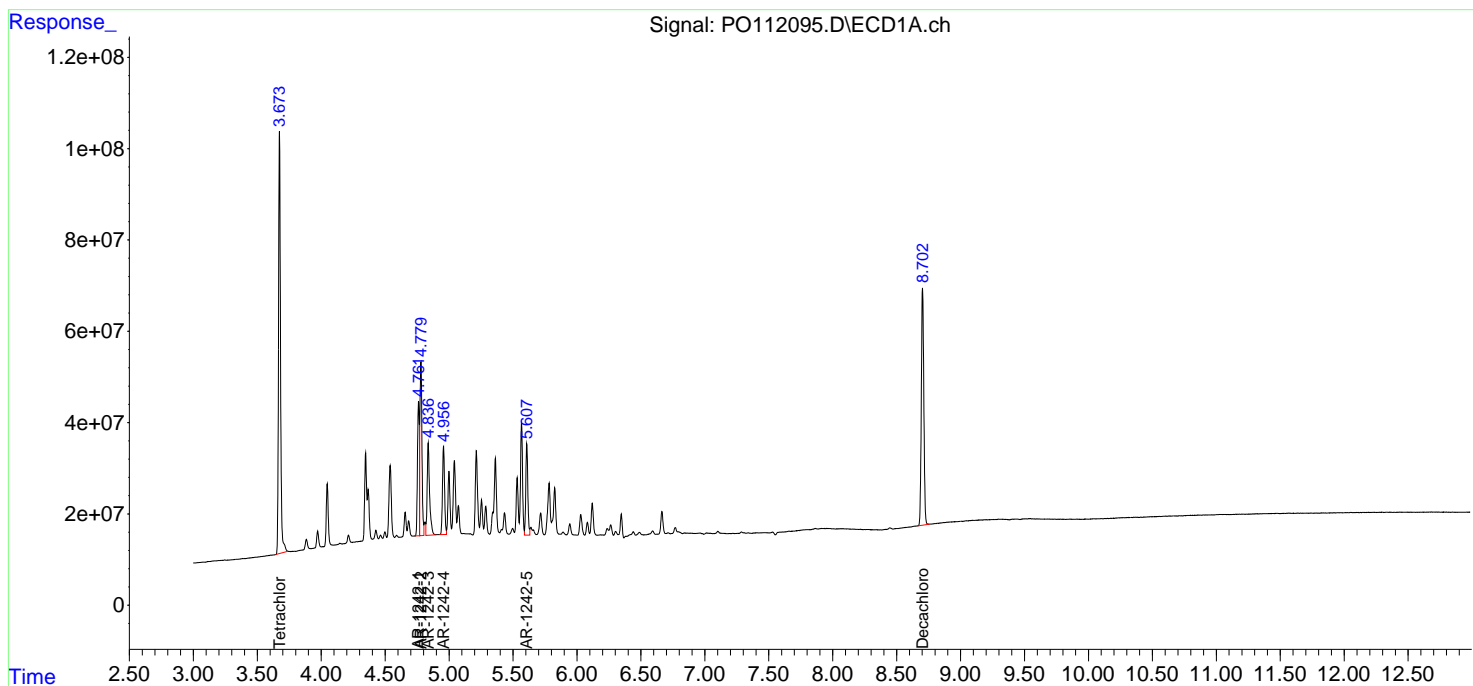
(f)=RT Delta > 1/2 Window (#)=Amounts differ by > 25% (m)=manual int.

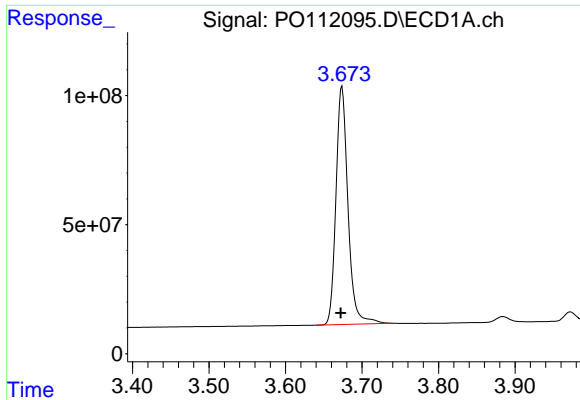
Data Path : Z:\pestpcbsrv\HPCHEM1\ECD_O\Data\P0070825\
 Data File : P0112095.D
 Signal(s) : Signal #1: ECD1A.ch Signal #2: ECD2B.ch
 Acq On : 08 Jul 2025 16:15
 Operator : YP/AJ
 Sample : AR1242ICC1000
 Misc :
 ALS Vial : 10 Sample Multiplier: 1

Instrument :
 ECD_O
 ClientSampleId :
 AR1242ICC1000

Integration File signal 1: autoint1.e
 Integration File signal 2: autoint2.e
 Quant Time: Jul 09 02:30:35 2025
 Quant Method : Z:\pestpcbsrv\HPCHEM1\ECD_O\methods\P0070825.M
 Quant Title : GC EXTRACTABLES
 QLast Update : Wed Jul 09 02:27:13 2025
 Response via : Initial Calibration
 Integrator: ChemStation

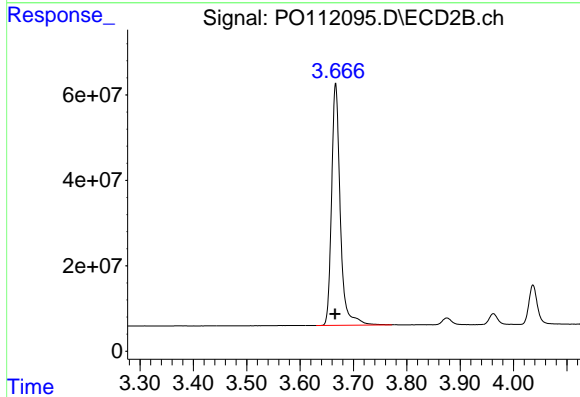
Volume Inj. : 2 µl
 Signal #1 Phase : ZB-MR1 Signal #2 Phase: ZB-MR2
 Signal #1 Info : 30Mx0.32mmx 0.50µ Signal #2 Info : 30M x 0.32mm x 0.25µm



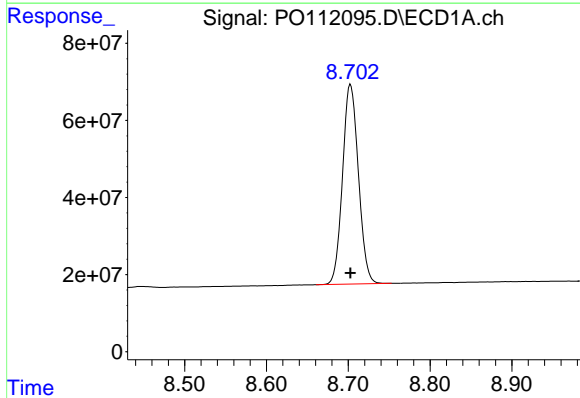


#1 Tetrachloro-m-xylene
 R.T.: 3.674 min
 Delta R.T.: 0.002 min
 Response: 1004763356
 Conc: 95.34 ng/ml

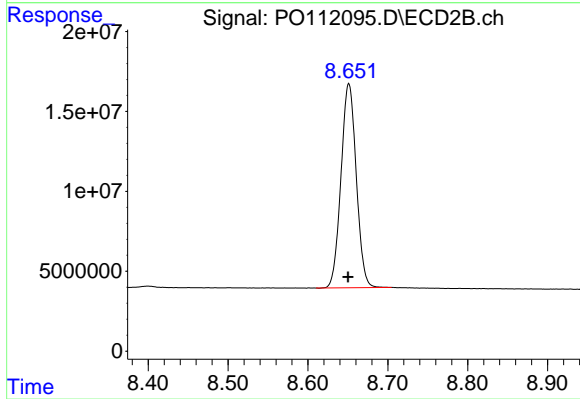
Instrument :
 ECD_O
 ClientSampleId :
 AR1242ICC1000



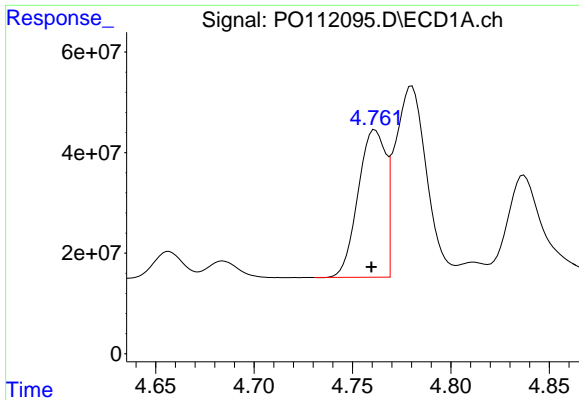
#1 Tetrachloro-m-xylene
 R.T.: 3.667 min
 Delta R.T.: 0.001 min
 Response: 640869487
 Conc: 95.22 ng/ml



#2 Decachlorobiphenyl
 R.T.: 8.703 min
 Delta R.T.: 0.000 min
 Response: 697996912
 Conc: 97.46 ng/ml



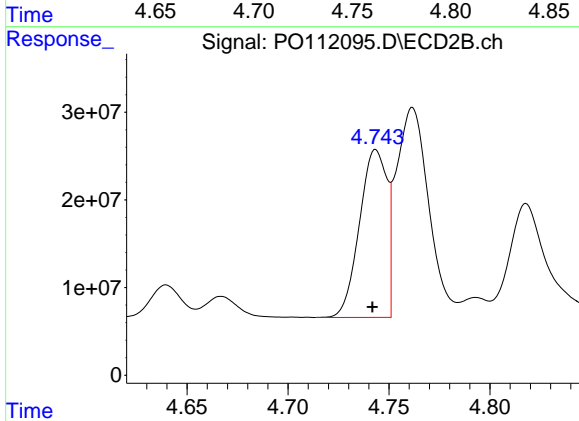
#2 Decachlorobiphenyl
 R.T.: 8.651 min
 Delta R.T.: 0.001 min
 Response: 169498593
 Conc: 94.18 ng/ml



#16 AR-1242-1

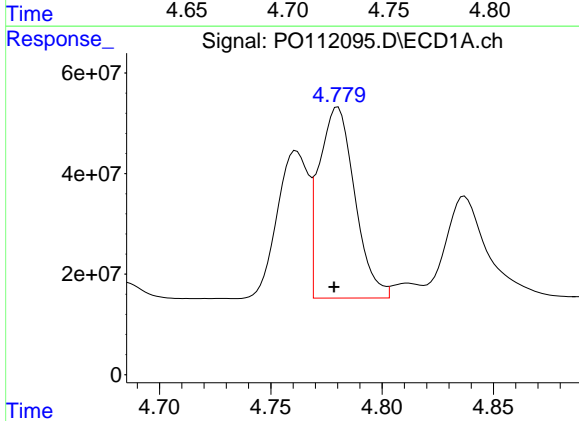
R.T.: 4.761 min
 Delta R.T.: 0.002 min
 Response: 285009923
 Conc: 941.91 ng/ml

Instrument :
 ECD_O
 ClientSampleId :
 AR1242ICC1000



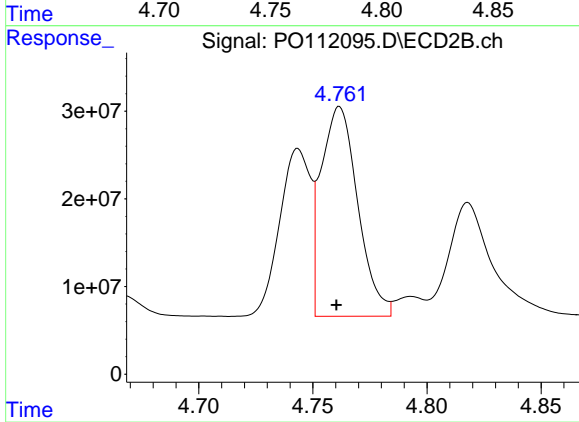
#16 AR-1242-1

R.T.: 4.744 min
 Delta R.T.: 0.002 min
 Response: 180558203
 Conc: 920.49 ng/ml



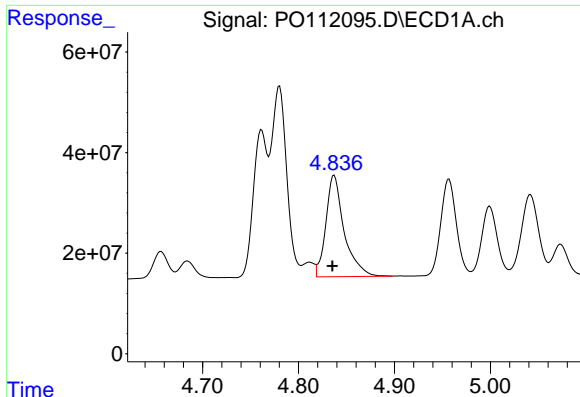
#17 AR-1242-2

R.T.: 4.780 min
 Delta R.T.: 0.002 min
 Response: 424985528
 Conc: 945.33 ng/ml



#17 AR-1242-2

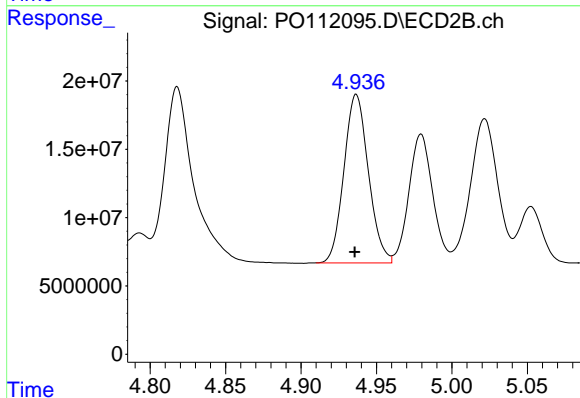
R.T.: 4.762 min
 Delta R.T.: 0.001 min
 Response: 267145812
 Conc: 925.05 ng/ml



#18 AR-1242-3

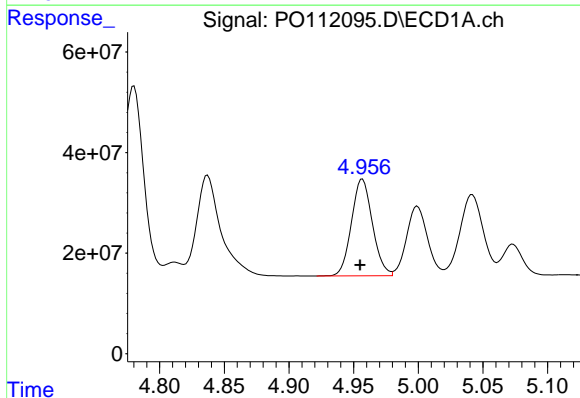
R.T.: 4.837 min
 Delta R.T.: 0.002 min
 Response: 267327438
 Conc: 930.23 ng/ml

Instrument :
 ECD_O
 ClientSampleId :
 AR1242ICC1000



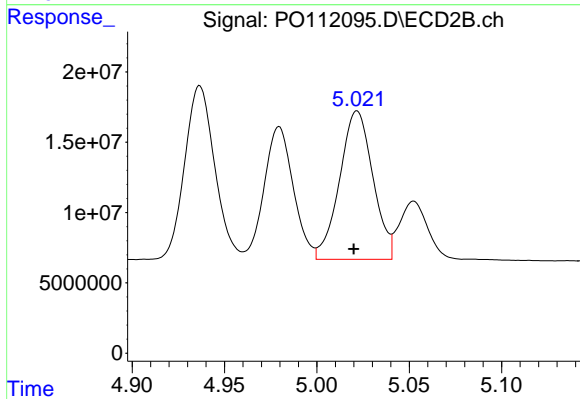
#18 AR-1242-3

R.T.: 4.937 min
 Delta R.T.: 0.000 min
 Response: 139388587
 Conc: 929.18 ng/ml



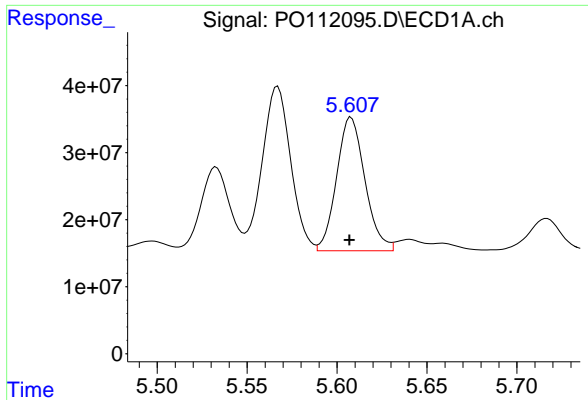
#19 AR-1242-4

R.T.: 4.957 min
 Delta R.T.: 0.002 min
 Response: 217524144
 Conc: 938.62 ng/ml



#19 AR-1242-4

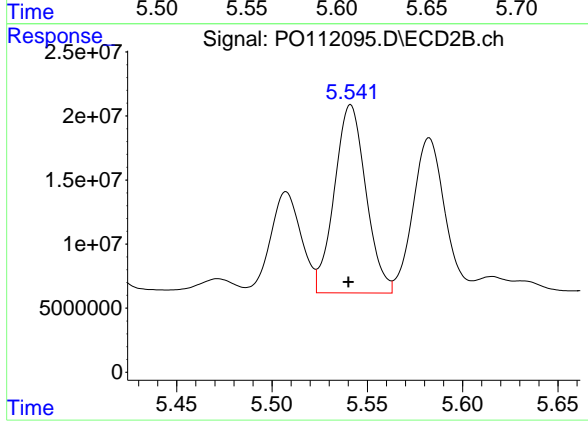
R.T.: 5.022 min
 Delta R.T.: 0.002 min
 Response: 132647733
 Conc: 923.58 ng/ml



#20 AR-1242-5

R.T.: 5.608 min
Delta R.T.: 0.000 min
Response: 218416651
Conc: 972.81 ng/ml

Instrument :
ECD_O
ClientSampleId :
AR1242ICC1000



#20 AR-1242-5

R.T.: 5.541 min
Delta R.T.: 0.001 min
Response: 169256952
Conc: 904.77 ng/ml