

Data Path : Z:\pestpcbsrv\HPCHEM1\ECD_0\Data\P0070825\
 Data File : PO112096.D
 Signal(s) : Signal #1: ECD1A.ch Signal #2: ECD2B.ch
 Acq On : 08 Jul 2025 16:34
 Operator : YP/AJ
 Sample : AR1242ICC750
 Misc :
 ALS Vial : 11 Sample Multiplier: 1

Instrument :
 ECD_0
 ClientSampleId :
 AR1242ICC750

Integration File signal 1: autoint1.e
 Integration File signal 2: autoint2.e
 Quant Time: Jul 09 02:30:45 2025
 Quant Method : Z:\pestpcbsrv\HPCHEM1\ECD_0\methods\P0070825.M
 Quant Title : GC EXTRACTABLES
 QLast Update : Wed Jul 09 02:27:13 2025
 Response via : Initial Calibration
 Integrator: ChemStation

Volume Inj. : 2 µl
 Signal #1 Phase : ZB-MR1 Signal #2 Phase: ZB-MR2
 Signal #1 Info : 30Mx0.32mmx 0.50µ Signal #2 Info : 30M x 0.32mm x 0.25µm

Compound	RT#1	RT#2	Resp#1	Resp#2	ng/ml	ng/ml

System Monitoring Compounds						
1) SA Tetrachlo...	3.673	3.666	806.4E6	515.4E6	76.520	76.575
2) SA Decachlor...	8.704	8.650	536.1E6	132.4E6	74.848	73.593
Target Compounds						
16) L4 AR-1242-1	4.761	4.743	229.3E6	145.7E6	757.886	742.820
17) L4 AR-1242-2	4.780	4.761	338.7E6	214.4E6	753.331	742.460
18) L4 AR-1242-3	4.837	4.936	213.9E6	112.4E6	744.270	749.423
19) L4 AR-1242-4	4.956	5.021	174.1E6	106.9E6	751.378	744.191
20) L4 AR-1242-5	5.608	5.540	174.3E6	136.6E6	776.440	729.978

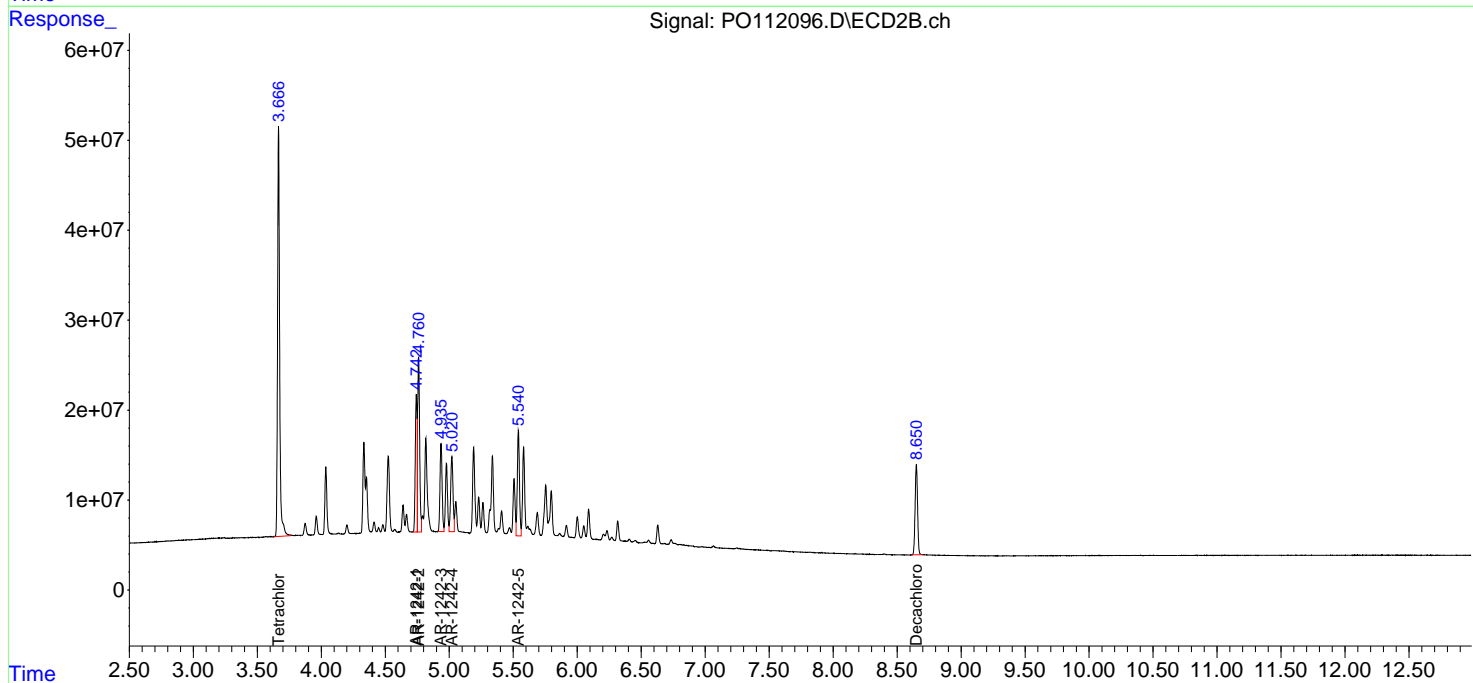
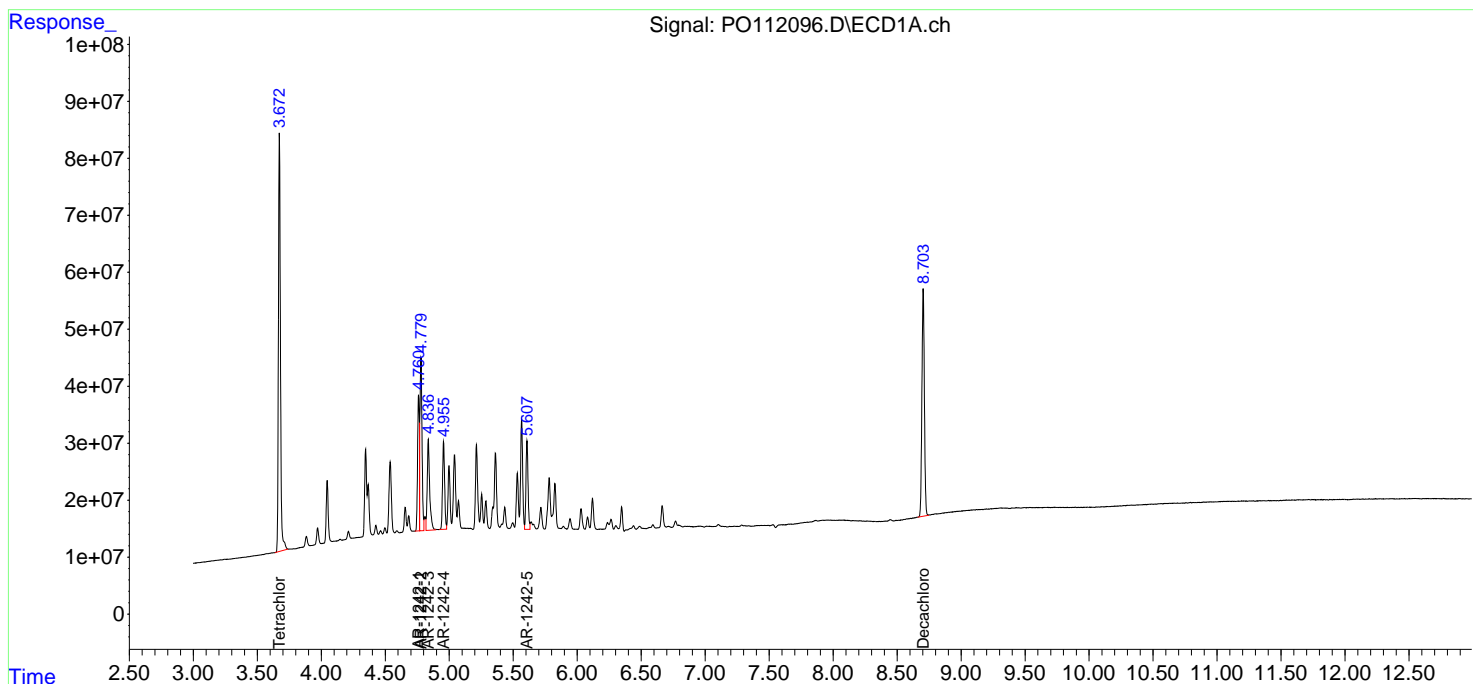
(f)=RT Delta > 1/2 Window (#)=Amounts differ by > 25% (m)=manual int.

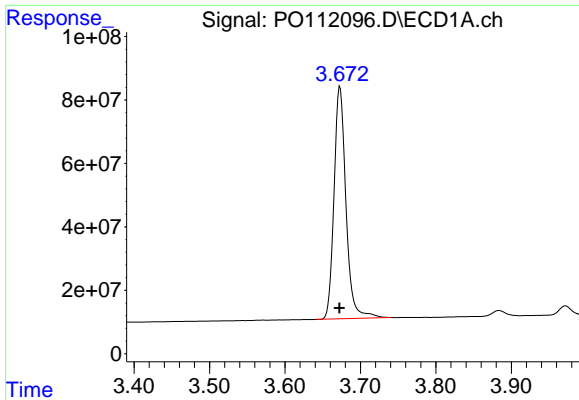
Data Path : Z:\pestpcbsrv\HPCHEM1\ECD_O\Data\P0070825\
 Data File : P0112096.D
 Signal(s) : Signal #1: ECD1A.ch Signal #2: ECD2B.ch
 Acq On : 08 Jul 2025 16:34
 Operator : YP/AJ
 Sample : AR1242ICC750
 Misc :
 ALS Vial : 11 Sample Multiplier: 1

Instrument :
 ECD_O
 ClientSampleId :
 AR1242ICC750

Integration File signal 1: autoint1.e
 Integration File signal 2: autoint2.e
 Quant Time: Jul 09 02:30:45 2025
 Quant Method : Z:\pestpcbsrv\HPCHEM1\ECD_O\methods\P0070825.M
 Quant Title : GC EXTRACTABLES
 QLast Update : Wed Jul 09 02:27:13 2025
 Response via : Initial Calibration
 Integrator: ChemStation

Volume Inj. : 2 µl
 Signal #1 Phase : ZB-MR1 Signal #2 Phase: ZB-MR2
 Signal #1 Info : 30Mx0.32mmx 0.50µ Signal #2 Info : 30M x 0.32mm x 0.25µm

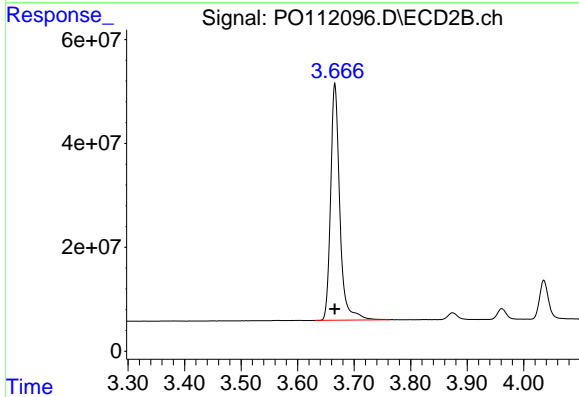




#1 Tetrachloro-m-xylene

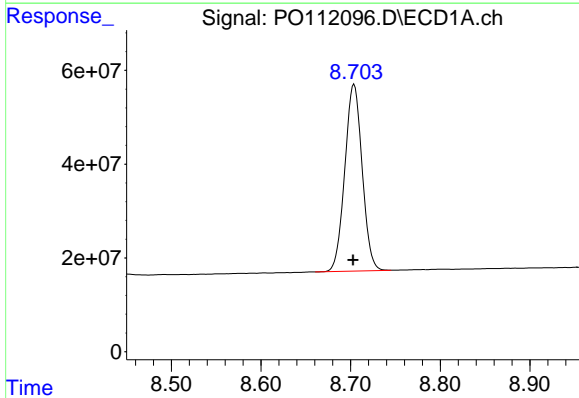
R.T.: 3.673 min
 Delta R.T.: 0.000 min
 Response: 806402483
 Conc: 76.52 ng/ml

Instrument :
 ECD_O
 ClientSampleId :
 AR1242ICC750



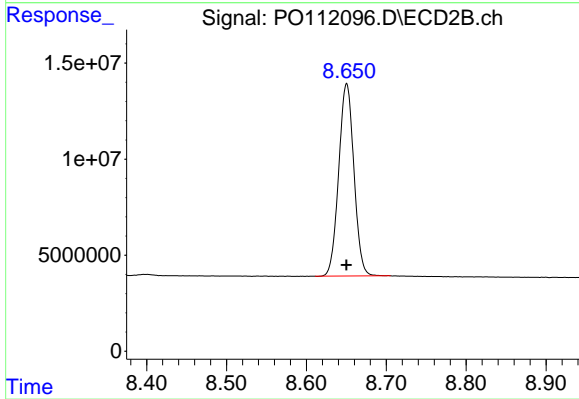
#1 Tetrachloro-m-xylene

R.T.: 3.666 min
 Delta R.T.: 0.000 min
 Response: 515402675
 Conc: 76.57 ng/ml



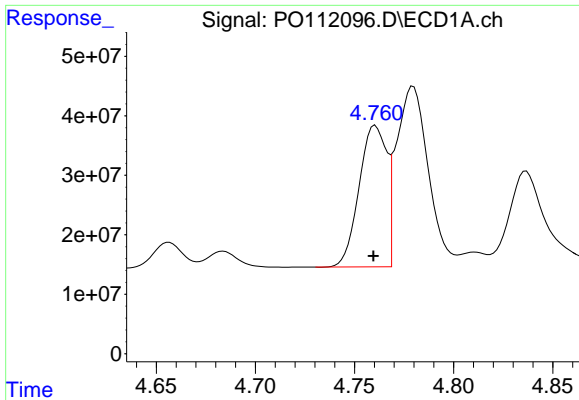
#2 Decachlorobiphenyl

R.T.: 8.704 min
 Delta R.T.: 0.001 min
 Response: 536055523
 Conc: 74.85 ng/ml



#2 Decachlorobiphenyl

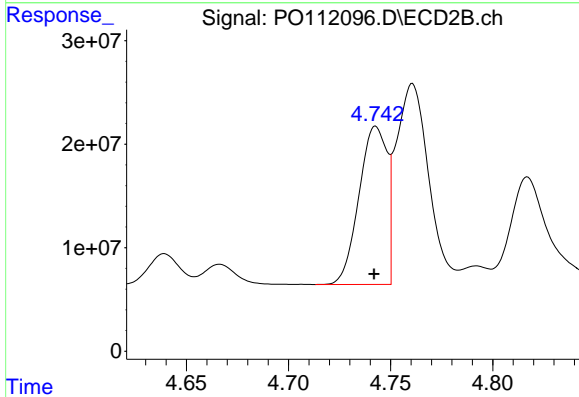
R.T.: 8.650 min
 Delta R.T.: 0.000 min
 Response: 132448036
 Conc: 73.59 ng/ml



#16 AR-1242-1

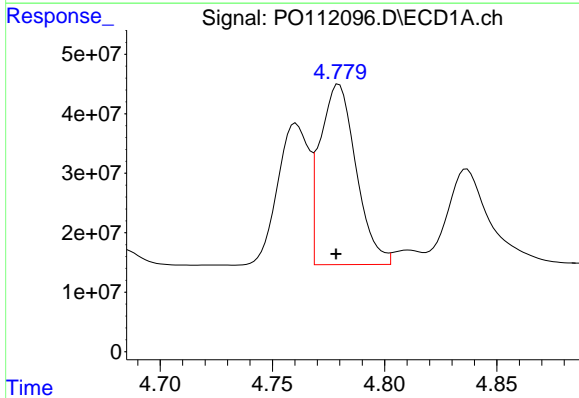
R.T.: 4.761 min
 Delta R.T.: 0.001 min
 Response: 229327263
 Conc: 757.89 ng/ml

Instrument :
 ECD_O
 ClientSampleId :
 AR1242ICC750



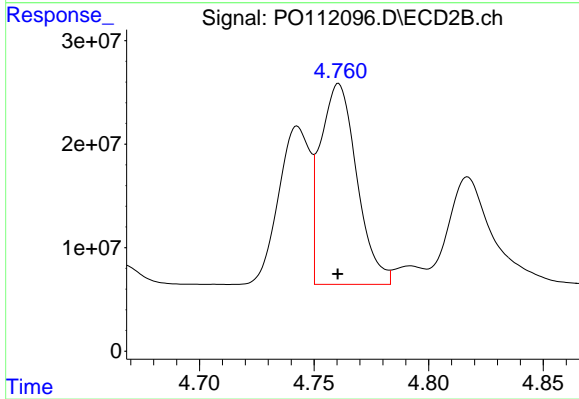
#16 AR-1242-1

R.T.: 4.743 min
 Delta R.T.: 0.000 min
 Response: 145707357
 Conc: 742.82 ng/ml



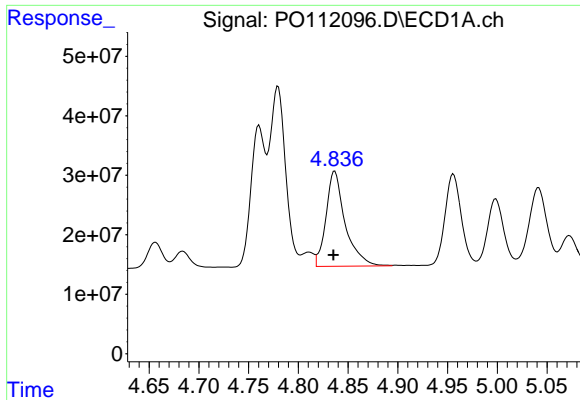
#17 AR-1242-2

R.T.: 4.780 min
 Delta R.T.: 0.001 min
 Response: 338668755
 Conc: 753.33 ng/ml



#17 AR-1242-2

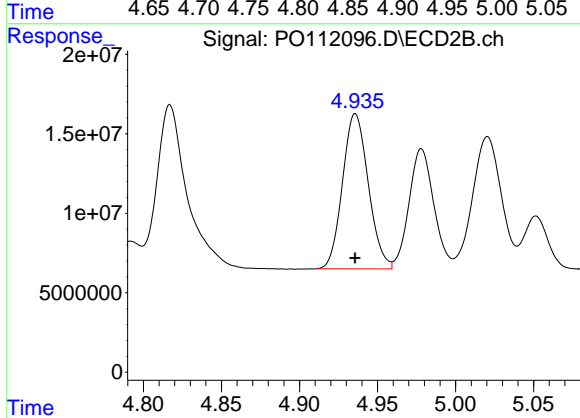
R.T.: 4.761 min
 Delta R.T.: 0.000 min
 Response: 214416419
 Conc: 742.46 ng/ml



#18 AR-1242-3

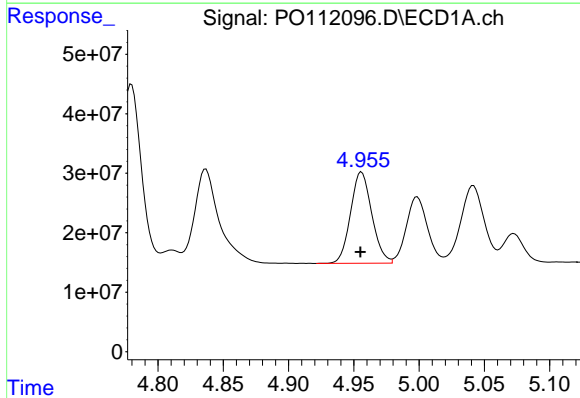
R.T.: 4.837 min
 Delta R.T.: 0.001 min
 Response: 213886334
 Conc: 744.27 ng/ml

Instrument :
 ECD_O
 ClientSampleId :
 AR1242ICC750



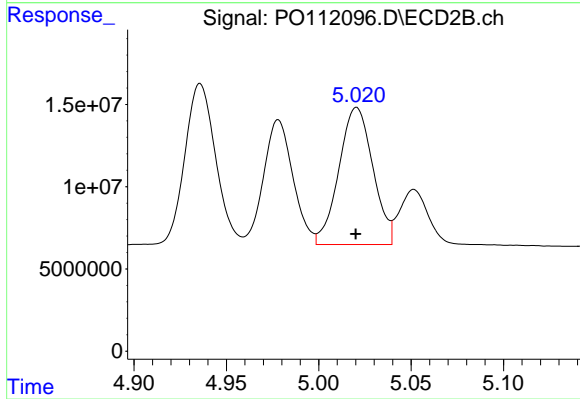
#18 AR-1242-3

R.T.: 4.936 min
 Delta R.T.: 0.000 min
 Response: 112422531
 Conc: 749.42 ng/ml



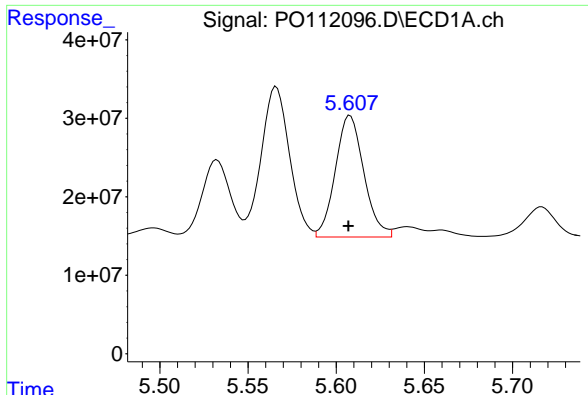
#19 AR-1242-4

R.T.: 4.956 min
 Delta R.T.: 0.000 min
 Response: 174130485
 Conc: 751.38 ng/ml



#19 AR-1242-4

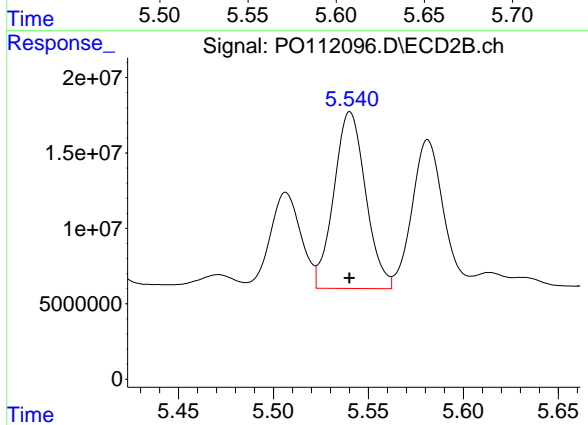
R.T.: 5.021 min
 Delta R.T.: 0.000 min
 Response: 106883873
 Conc: 744.19 ng/ml



#20 AR-1242-5

R.T.: 5.608 min
 Delta R.T.: 0.001 min
 Response: 174328144
 Conc: 776.44 ng/ml

Instrument :
 ECD_O
 ClientSampleId :
 AR1242ICC750



#20 AR-1242-5

R.T.: 5.540 min
 Delta R.T.: 0.000 min
 Response: 136558108
 Conc: 729.98 ng/ml