

Data Path : Z:\pestpcbsrv\HPCHEM1\ECD_0\Data\P0070825\
 Data File : P0112101.D
 Signal(s) : Signal #1: ECD1A.ch Signal #2: ECD2B.ch
 Acq On : 08 Jul 2025 18:05
 Operator : YP/AJ
 Sample : AR1248ICC750
 Misc :
 ALS Vial : 16 Sample Multiplier: 1

Instrument :
 ECD_0
 ClientSampleId :
 AR1248ICC750

Integration File signal 1: autoint1.e
 Integration File signal 2: autoint2.e
 Quant Time: Jul 09 02:45:12 2025
 Quant Method : Z:\pestpcbsrv\HPCHEM1\ECD_0\methods\P0070825.M
 Quant Title : GC EXTRACTABLES
 QLast Update : Wed Jul 09 02:41:59 2025
 Response via : Initial Calibration
 Integrator: ChemStation

Volume Inj. : 2 µl
 Signal #1 Phase : ZB-MR1 Signal #2 Phase: ZB-MR2
 Signal #1 Info : 30Mx0.32mmx 0.50µ Signal #2 Info : 30M x 0.32mm x 0.25µm

Compound	RT#1	RT#2	Resp#1	Resp#2	ng/ml	ng/ml

System Monitoring Compounds						
1) SA Tetrachlo...	3.671	3.666	800.2E6	504.2E6	75.968	75.785
2) SA Decachlor...	8.700	8.649	537.9E6	133.0E6	74.111	72.476
Target Compounds						
21) L5 AR-1248-1	4.758	4.742	170.5E6	110.1E6	748.923	735.697
22) L5 AR-1248-2	4.996	4.978	229.4E6	148.7E6	746.494	731.979
23) L5 AR-1248-3	5.211	5.020	293.7E6	156.3E6	747.424	734.330
24) L5 AR-1248-4	5.564	5.190	429.4E6	184.7E6	746.110	728.503
25) L5 AR-1248-5	5.605	5.580	293.6E6	182.5E6	751.479	727.317

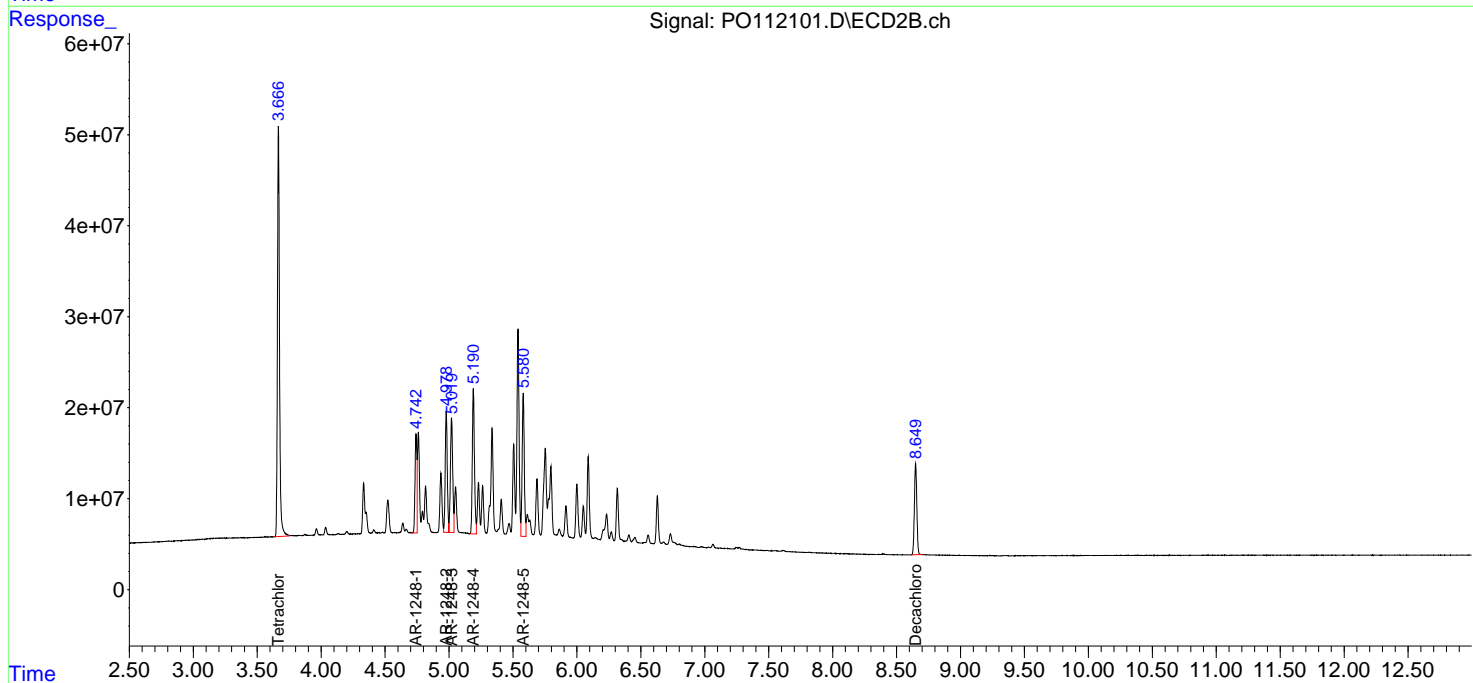
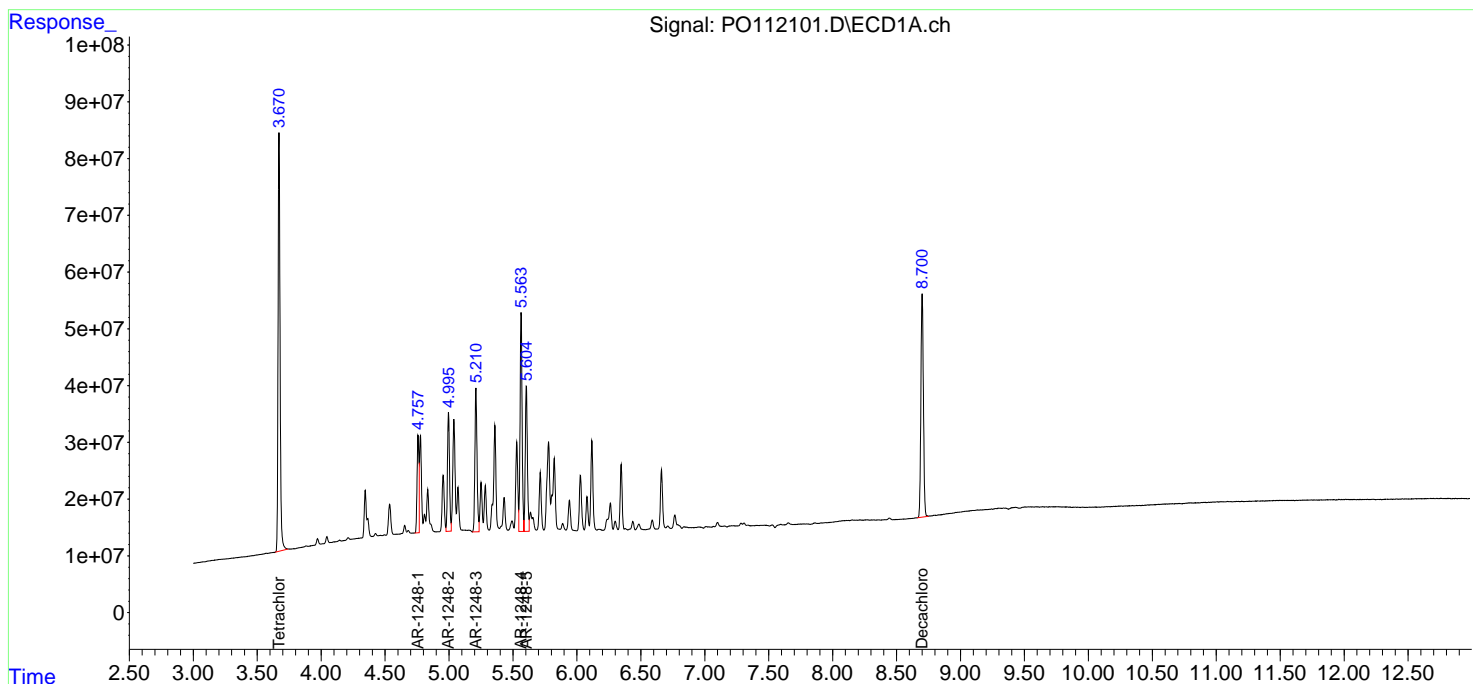
(f)=RT Delta > 1/2 Window (#)=Amounts differ by > 25% (m)=manual int.

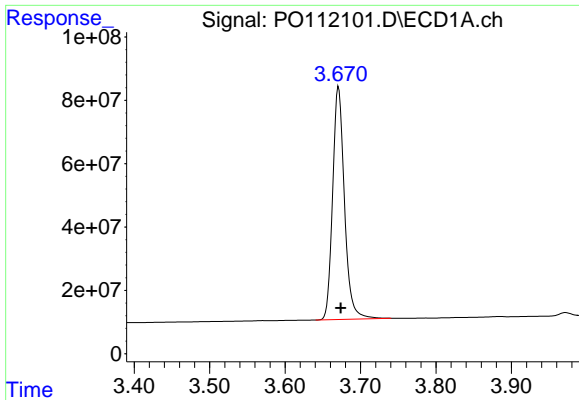
Data Path : Z:\pestpcbsrv\HPCHEM1\ECD_O\Data\P0070825\
 Data File : P0112101.D
 Signal(s) : Signal #1: ECD1A.ch Signal #2: ECD2B.ch
 Acq On : 08 Jul 2025 18:05
 Operator : YP/AJ
 Sample : AR1248ICC750
 Misc :
 ALS Vial : 16 Sample Multiplier: 1

Instrument :
 ECD_O
 ClientSampleId :
 AR1248ICC750

Integration File signal 1: autoint1.e
 Integration File signal 2: autoint2.e
 Quant Time: Jul 09 02:45:12 2025
 Quant Method : Z:\pestpcbsrv\HPCHEM1\ECD_O\methods\P0070825.M
 Quant Title : GC EXTRACTABLES
 QLast Update : Wed Jul 09 02:41:59 2025
 Response via : Initial Calibration
 Integrator: ChemStation

Volume Inj. : 2 µl
 Signal #1 Phase : ZB-MR1 Signal #2 Phase: ZB-MR2
 Signal #1 Info : 30Mx0.32mmx 0.50µ Signal #2 Info : 30M x 0.32mm x 0.25µm

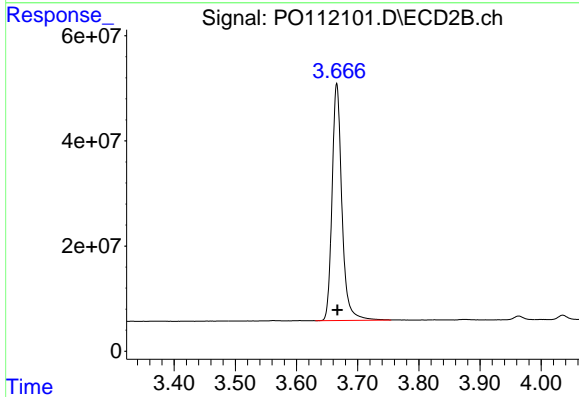




#1 Tetrachloro-m-xylene

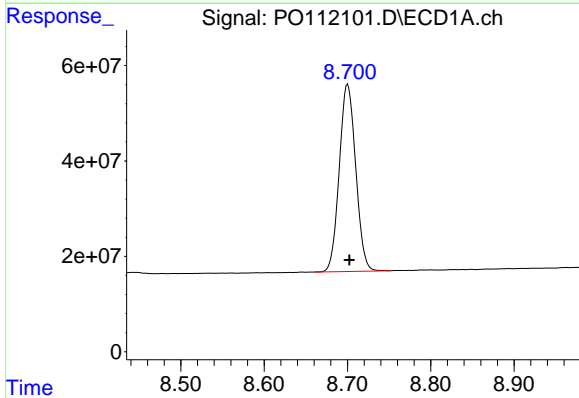
R.T.: 3.671 min
 Delta R.T.: -0.003 min
 Response: 800174691
 Conc: 75.97 ng/ml

Instrument :
 ECD_O
 ClientSampleId :
 AR1248ICC750



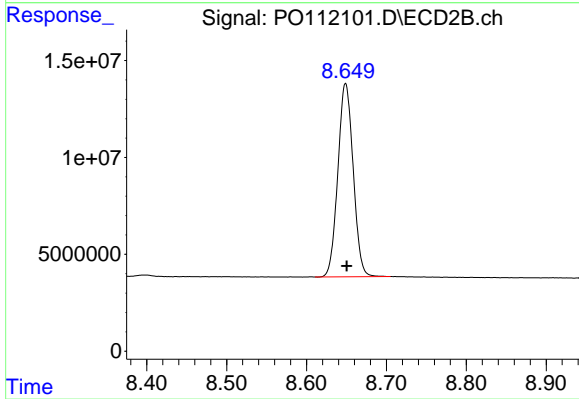
#1 Tetrachloro-m-xylene

R.T.: 3.666 min
 Delta R.T.: -0.001 min
 Response: 504222637
 Conc: 75.78 ng/ml



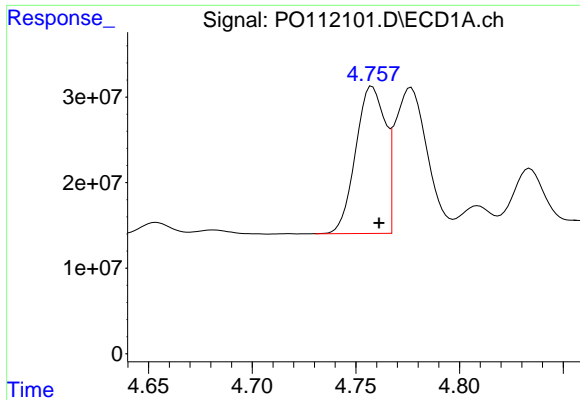
#2 Decachlorobiphenyl

R.T.: 8.700 min
 Delta R.T.: -0.002 min
 Response: 537944254
 Conc: 74.11 ng/ml



#2 Decachlorobiphenyl

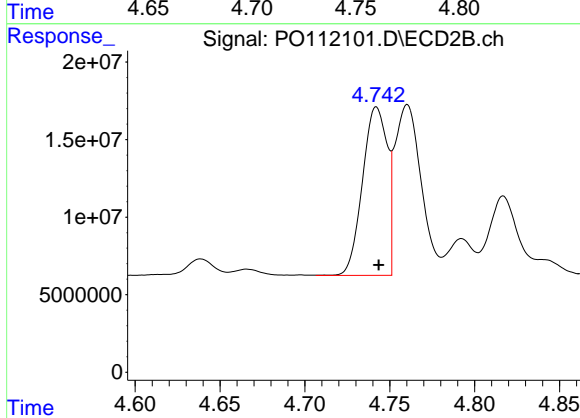
R.T.: 8.649 min
 Delta R.T.: -0.001 min
 Response: 132988512
 Conc: 72.48 ng/ml



#21 AR-1248-1

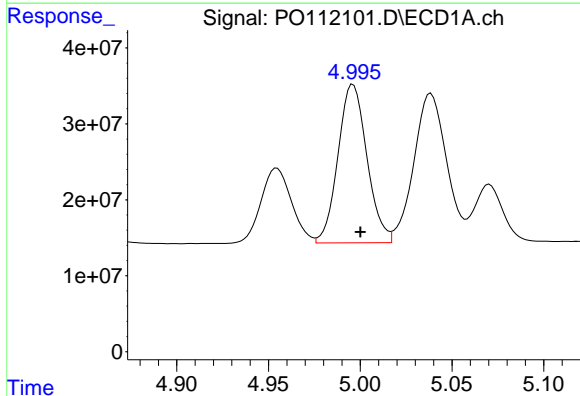
R.T.: 4.758 min
 Delta R.T.: -0.003 min
 Response: 170473785
 Conc: 748.92 ng/ml

Instrument :
 ECD_O
 ClientSampleId :
 AR1248ICC750



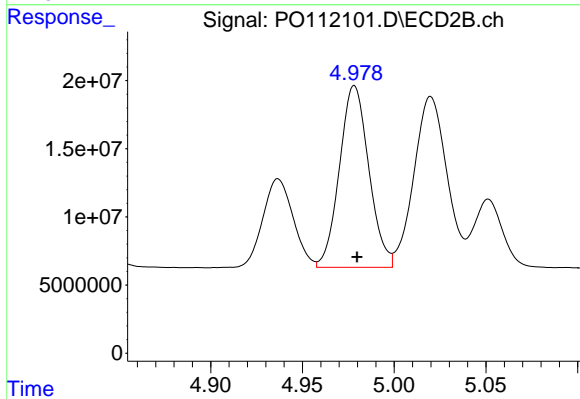
#21 AR-1248-1

R.T.: 4.742 min
 Delta R.T.: -0.001 min
 Response: 110087825
 Conc: 735.70 ng/ml



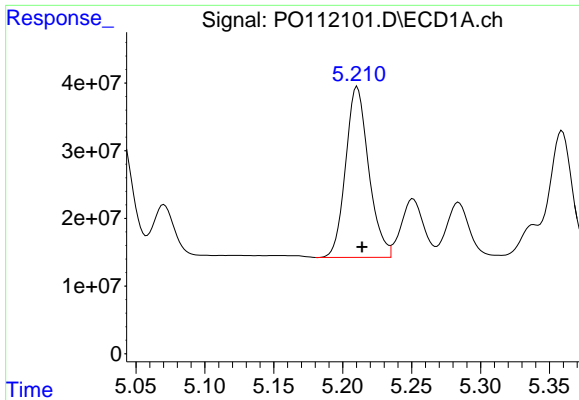
#22 AR-1248-2

R.T.: 4.996 min
 Delta R.T.: -0.004 min
 Response: 229364504
 Conc: 746.49 ng/ml



#22 AR-1248-2

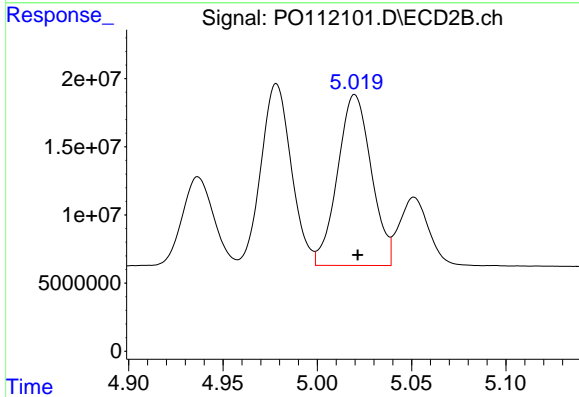
R.T.: 4.978 min
 Delta R.T.: -0.001 min
 Response: 148681673
 Conc: 731.98 ng/ml



#23 AR-1248-3

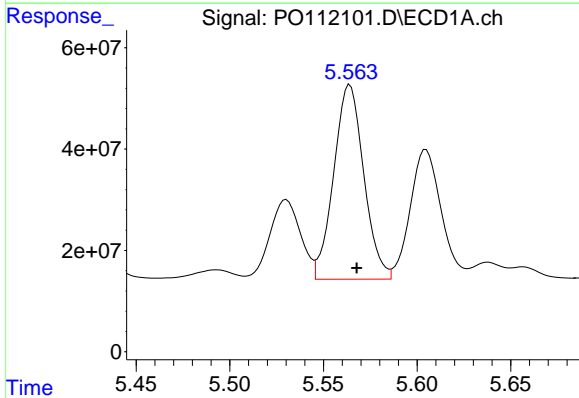
R.T.: 5.211 min
 Delta R.T.: -0.004 min
 Response: 293676772
 Conc: 747.42 ng/ml

Instrument :
 ECD_O
 ClientSampleId :
 AR1248ICC750



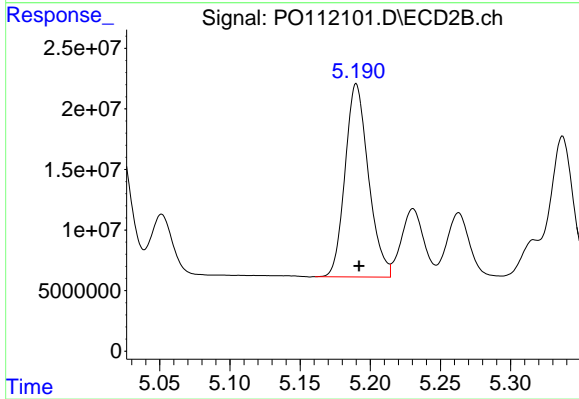
#23 AR-1248-3

R.T.: 5.020 min
 Delta R.T.: -0.002 min
 Response: 156253250
 Conc: 734.33 ng/ml



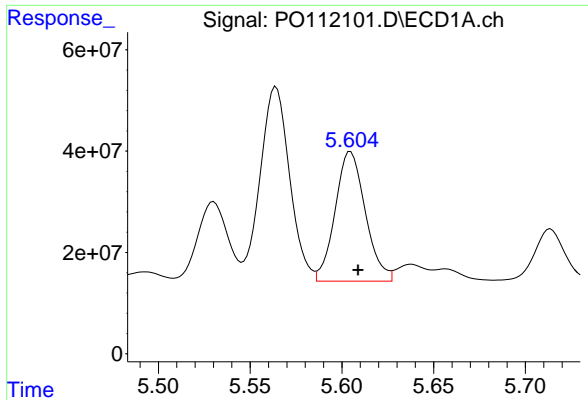
#24 AR-1248-4

R.T.: 5.564 min
 Delta R.T.: -0.004 min
 Response: 429428792
 Conc: 746.11 ng/ml



#24 AR-1248-4

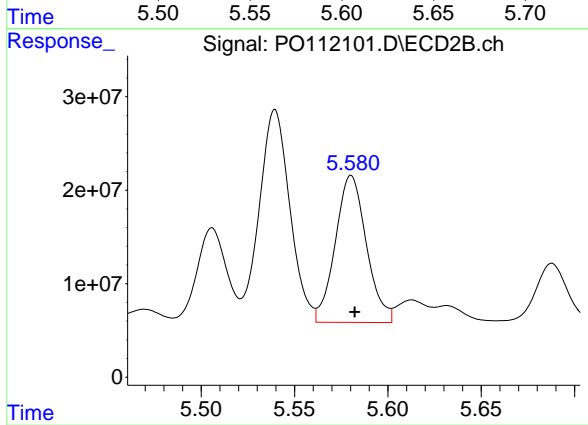
R.T.: 5.190 min
 Delta R.T.: -0.002 min
 Response: 184689305
 Conc: 728.50 ng/ml



#25 AR-1248-5

R.T.: 5.605 min
Delta R.T.: -0.004 min
Response: 293601725
Conc: 751.48 ng/ml

Instrument :
ECD_O
ClientSampleId :
AR1248ICC750



#25 AR-1248-5

R.T.: 5.580 min
Delta R.T.: -0.002 min
Response: 182546914
Conc: 727.32 ng/ml