

Data Path : Z:\pestpcbsrv\HPCHEM1\ECD_0\Data\P0070825\
 Data File : P0112103.D
 Signal(s) : Signal #1: ECD1A.ch Signal #2: ECD2B.ch
 Acq On : 08 Jul 2025 18:41
 Operator : YP/AJ
 Sample : AR1248ICC250
 Misc :
 ALS Vial : 18 Sample Multiplier: 1

Instrument :
 ECD_0
 ClientSampleId :
 AR1248ICC250

Integration File signal 1: autoint1.e
 Integration File signal 2: autoint2.e
 Quant Time: Jul 09 02:45:32 2025
 Quant Method : Z:\pestpcbsrv\HPCHEM1\ECD_0\methods\P0070825.M
 Quant Title : GC EXTRACTABLES
 QLast Update : Wed Jul 09 02:41:59 2025
 Response via : Initial Calibration
 Integrator: ChemStation

Volume Inj. : 2 µl
 Signal #1 Phase : ZB-MR1 Signal #2 Phase: ZB-MR2
 Signal #1 Info : 30Mx0.32mmx 0.50µ Signal #2 Info : 30M x 0.32mm x 0.25µm

Compound	RT#1	RT#2	Resp#1	Resp#2	ng/ml	ng/ml

System Monitoring Compounds						
1) SA Tetrachlo...	3.671	3.666	291.9E6	186.4E6	27.709	28.020
2) SA Decachlor...	8.702	8.649	189.2E6	49988120	26.067	27.243
Target Compounds						
21) L5 AR-1248-1	4.759	4.742	62843351	43399528	276.083	290.031
22) L5 AR-1248-2	4.997	4.978	87401333	57560333	284.458	283.377
23) L5 AR-1248-3	5.211	5.020	114.9E6	60695146	292.428	285.244
24) L5 AR-1248-4	5.565	5.190	153.8E6	74439996	267.224	293.627
25) L5 AR-1248-5	5.606	5.581	108.9E6	74875919	278.783	298.326

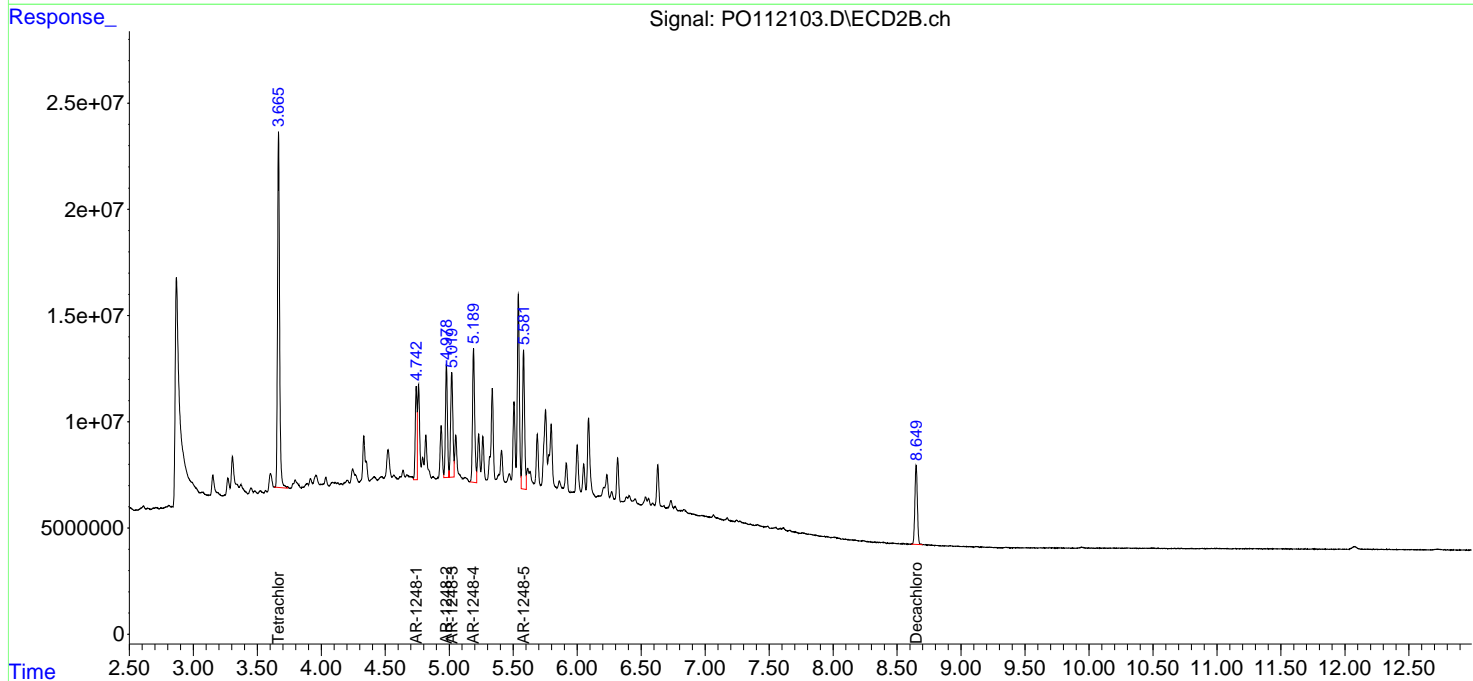
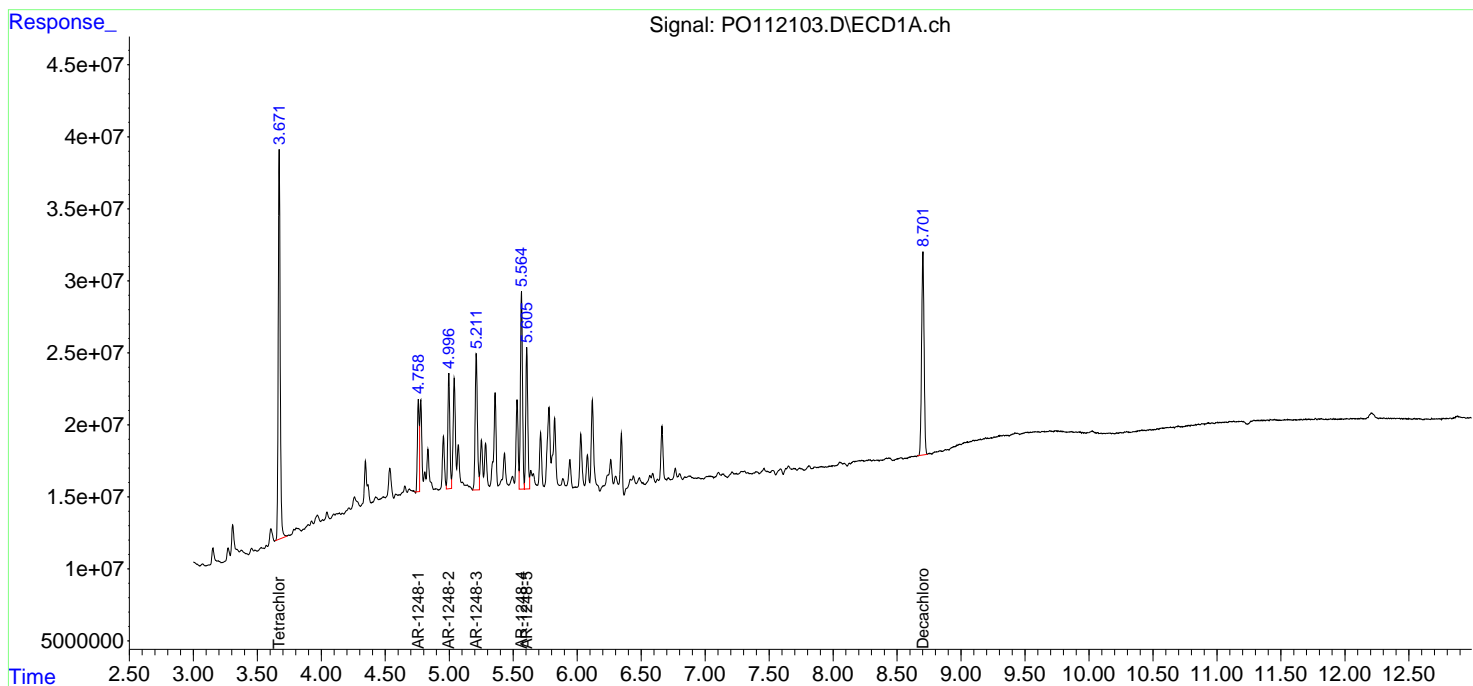
(f)=RT Delta > 1/2 Window (#)=Amounts differ by > 25% (m)=manual int.

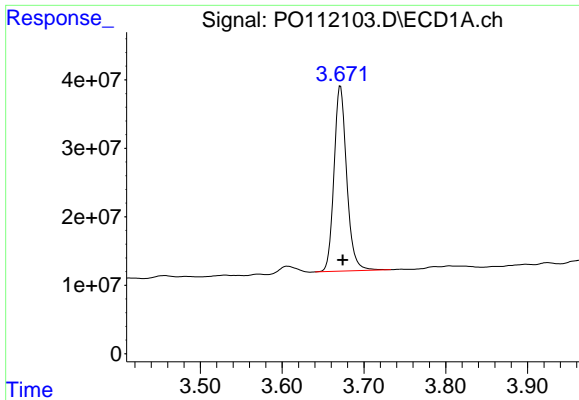
Data Path : Z:\pestpcbsrv\HPCHEM1\ECD_O\Data\PO070825\
 Data File : PO112103.D
 Signal(s) : Signal #1: ECD1A.ch Signal #2: ECD2B.ch
 Acq On : 08 Jul 2025 18:41
 Operator : YP/AJ
 Sample : AR1248ICC250
 Misc :
 ALS Vial : 18 Sample Multiplier: 1

Instrument :
 ECD_O
 ClientSampleId :
 AR1248ICC250

Integration File signal 1: autoint1.e
 Integration File signal 2: autoint2.e
 Quant Time: Jul 09 02:45:32 2025
 Quant Method : Z:\pestpcbsrv\HPCHEM1\ECD_O\methods\PO070825.M
 Quant Title : GC EXTRACTABLES
 QLast Update : Wed Jul 09 02:41:59 2025
 Response via : Initial Calibration
 Integrator: ChemStation

Volume Inj. : 2 µl
 Signal #1 Phase : ZB-MR1 Signal #2 Phase: ZB-MR2
 Signal #1 Info : 30Mx0.32mmx 0.50µ Signal #2 Info : 30M x 0.32mm x 0.25µm

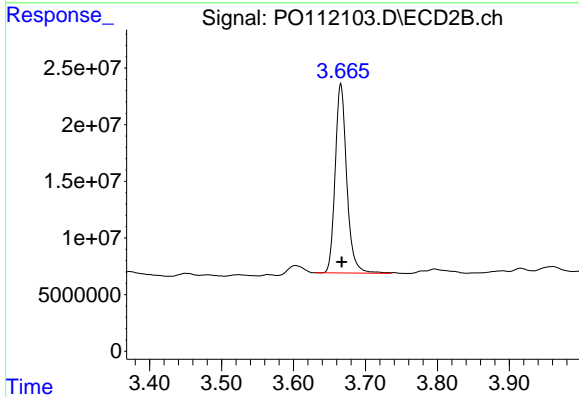




#1 Tetrachloro-m-xylene

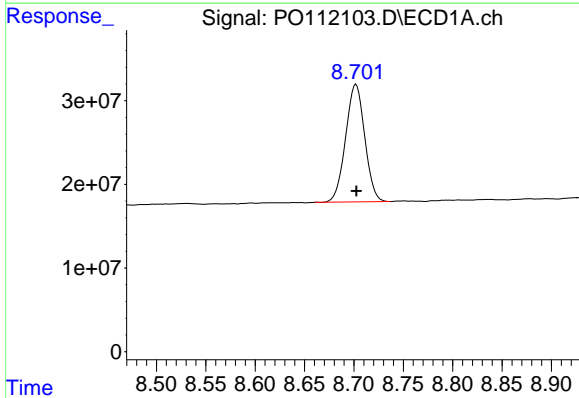
R.T.: 3.671 min
 Delta R.T.: -0.003 min
 Response: 291855307
 Conc: 27.71 ng/ml

Instrument :
 ECD_O
 ClientSampleId :
 AR1248ICC250



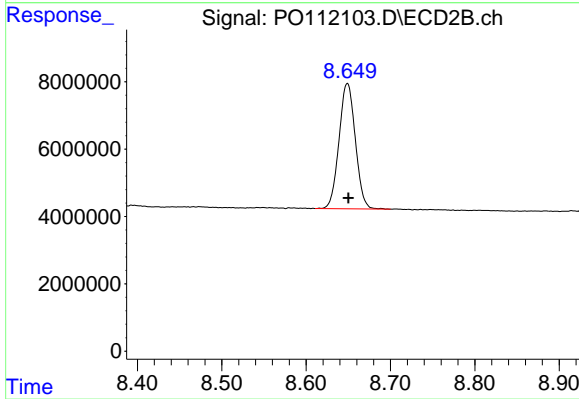
#1 Tetrachloro-m-xylene

R.T.: 3.666 min
 Delta R.T.: -0.001 min
 Response: 186430413
 Conc: 28.02 ng/ml



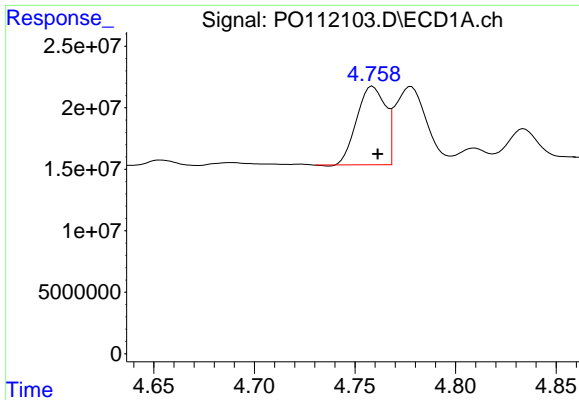
#2 Decachlorobiphenyl

R.T.: 8.702 min
 Delta R.T.: 0.000 min
 Response: 189212036
 Conc: 26.07 ng/ml



#2 Decachlorobiphenyl

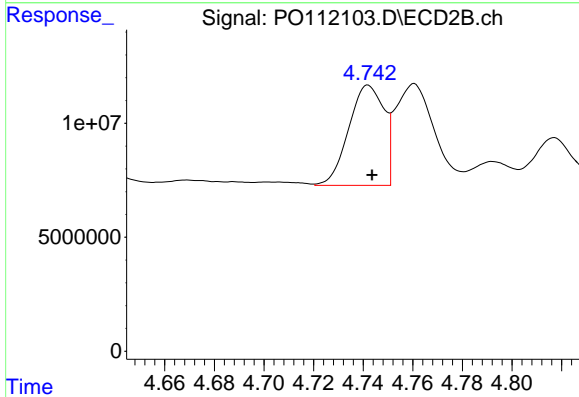
R.T.: 8.649 min
 Delta R.T.: -0.001 min
 Response: 49988120
 Conc: 27.24 ng/ml



#21 AR-1248-1

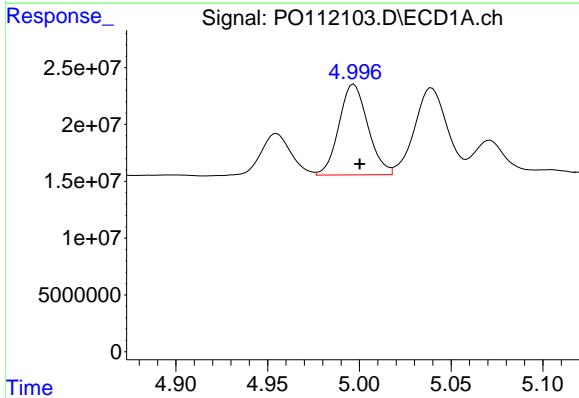
R.T.: 4.759 min
 Delta R.T.: -0.002 min
 Response: 62843351
 Conc: 276.08 ng/ml

Instrument :
 ECD_O
 ClientSampleId :
 AR1248ICC250



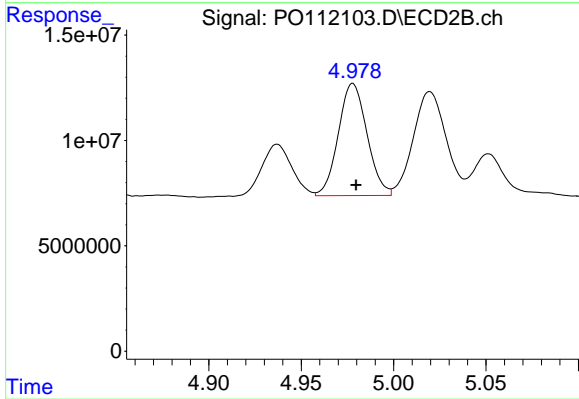
#21 AR-1248-1

R.T.: 4.742 min
 Delta R.T.: -0.001 min
 Response: 43399528
 Conc: 290.03 ng/ml



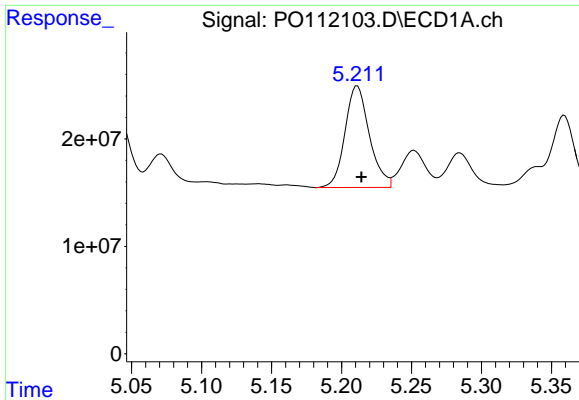
#22 AR-1248-2

R.T.: 4.997 min
 Delta R.T.: -0.003 min
 Response: 87401333
 Conc: 284.46 ng/ml



#22 AR-1248-2

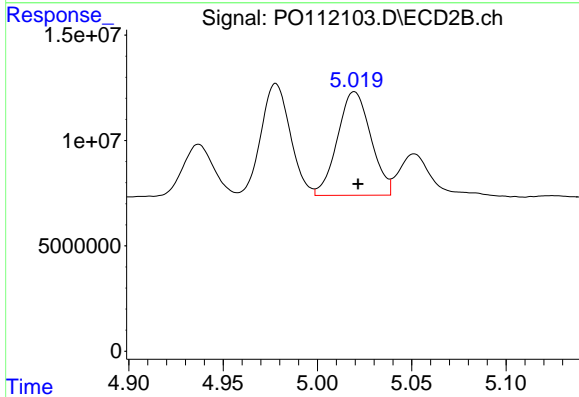
R.T.: 4.978 min
 Delta R.T.: -0.002 min
 Response: 57560333
 Conc: 283.38 ng/ml



#23 AR-1248-3

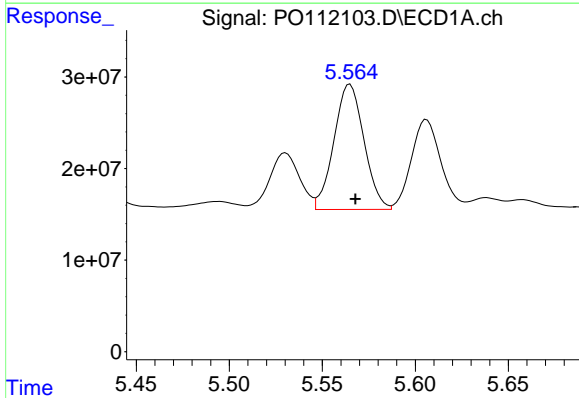
R.T.: 5.211 min
 Delta R.T.: -0.003 min
 Response: 114900435
 Conc: 292.43 ng/ml

Instrument :
 ECD_O
 ClientSampleId :
 AR1248ICC250



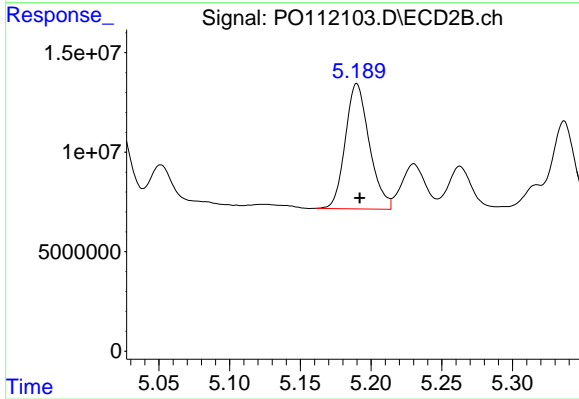
#23 AR-1248-3

R.T.: 5.020 min
 Delta R.T.: -0.002 min
 Response: 60695146
 Conc: 285.24 ng/ml



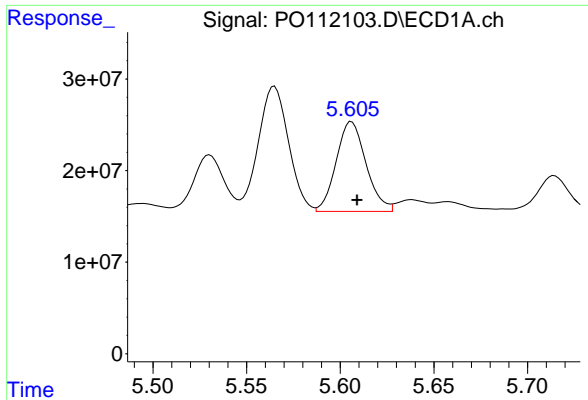
#24 AR-1248-4

R.T.: 5.565 min
 Delta R.T.: -0.003 min
 Response: 153802772
 Conc: 267.22 ng/ml



#24 AR-1248-4

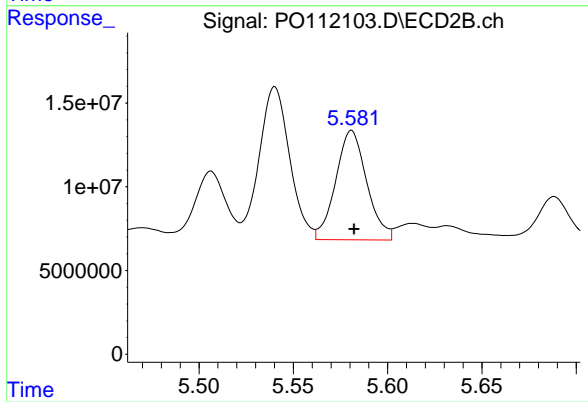
R.T.: 5.190 min
 Delta R.T.: -0.002 min
 Response: 74439996
 Conc: 293.63 ng/ml



#25 AR-1248-5

R.T.: 5.606 min
Delta R.T.: -0.003 min
Response: 108920138
Conc: 278.78 ng/ml

Instrument :
ECD_O
ClientSampleId :
AR1248ICC250



#25 AR-1248-5

R.T.: 5.581 min
Delta R.T.: -0.001 min
Response: 74875919
Conc: 298.33 ng/ml