

Data Path : Z:\pestpcbsrv\HPCHEM1\ECD_0\Data\P0070825\
 Data File : P0112105.D
 Signal(s) : Signal #1: ECD1A.ch Signal #2: ECD2B.ch
 Acq On : 08 Jul 2025 19:18
 Operator : YP/AJ
 Sample : AR1254ICC1000
 Misc :
 ALS Vial : 20 Sample Multiplier: 1

Instrument :
 ECD_0
 ClientSampleId :
 AR1254ICC1000

Integration File signal 1: autoint1.e
 Integration File signal 2: autoint2.e
 Quant Time: Jul 09 03:13:13 2025
 Quant Method : Z:\pestpcbsrv\HPCHEM1\ECD_0\methods\P0070825.M
 Quant Title : GC EXTRACTABLES
 QLast Update : Wed Jul 09 03:10:24 2025
 Response via : Initial Calibration
 Integrator: ChemStation

Volume Inj. : 2 µl
 Signal #1 Phase : ZB-MR1 Signal #2 Phase: ZB-MR2
 Signal #1 Info : 30Mx0.32mmx 0.50µ Signal #2 Info : 30M x 0.32mm x 0.25µm

Compound	RT#1	RT#2	Resp#1	Resp#2	ng/ml	ng/ml

System Monitoring Compounds						
1) SA Tetrachlo...	3.674	3.666	1081.7E6	681.3E6	100.629	100.324
2) SA Decachlor...	8.704	8.651	731.3E6	176.2E6	97.187	95.129
Target Compounds						
26) L6 AR-1254-1	5.567	5.542	596.4E6	358.7E6	968.859	952.427
27) L6 AR-1254-2	5.716	5.689	526.6E6	309.3E6	978.251	948.939
28) L6 AR-1254-3	6.120	6.090	832.4E6	457.0E6	985.524	970.955
29) L6 AR-1254-4	6.349	6.317	488.3E6	242.7E6	924.821	917.706
30) L6 AR-1254-5	6.769	6.735	772.8E6	340.9E6	976.309	957.333

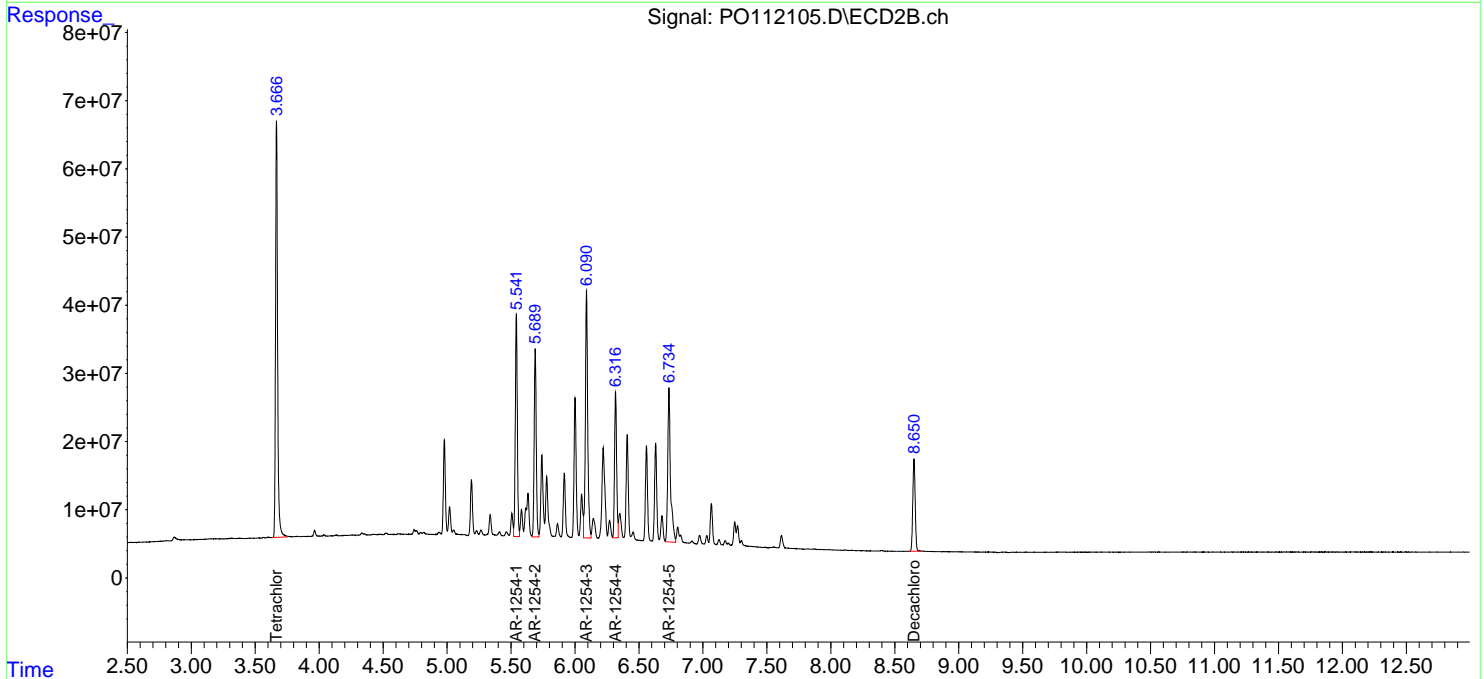
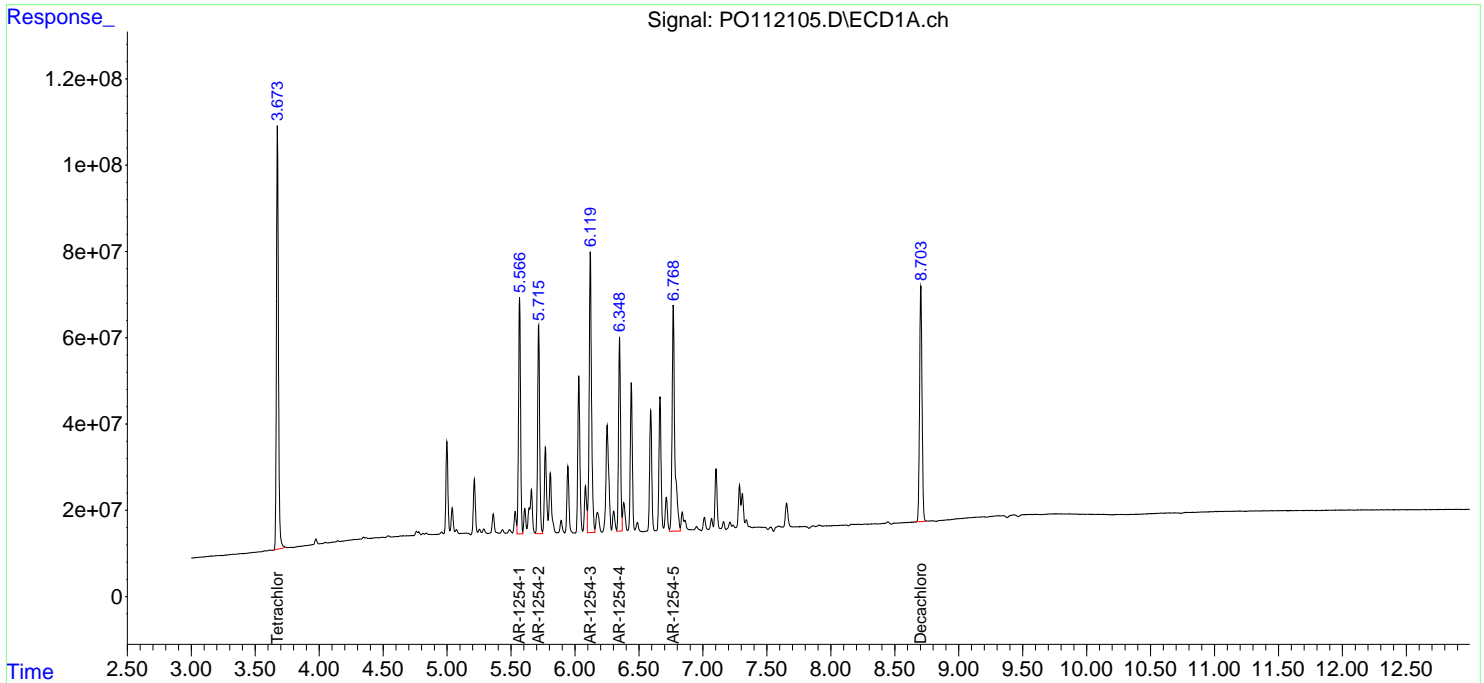
(f)=RT Delta > 1/2 Window (#)=Amounts differ by > 25% (m)=manual int.

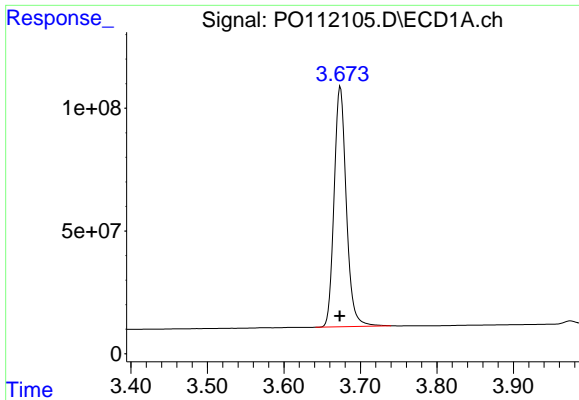
Data Path : Z:\pestpcbsrv\HPCHEM1\ECD_O\Data\PO070825\
 Data File : PO112105.D
 Signal(s) : Signal #1: ECD1A.ch Signal #2: ECD2B.ch
 Acq On : 08 Jul 2025 19:18
 Operator : YP/AJ
 Sample : AR1254ICC1000
 Misc :
 ALS Vial : 20 Sample Multiplier: 1

Instrument :
 ECD_O
 ClientSampleId :
 AR1254ICC1000

Integration File signal 1: autoint1.e
 Integration File signal 2: autoint2.e
 Quant Time: Jul 09 03:13:13 2025
 Quant Method : Z:\pestpcbsrv\HPCHEM1\ECD_O\methods\PO070825.M
 Quant Title : GC EXTRACTABLES
 QLast Update : Wed Jul 09 03:10:24 2025
 Response via : Initial Calibration
 Integrator: ChemStation

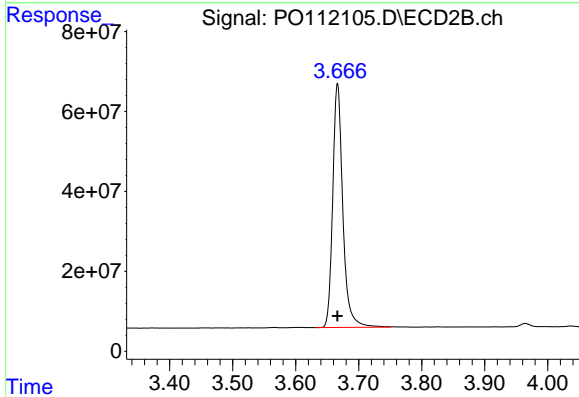
Volume Inj. : 2 µl
 Signal #1 Phase : ZB-MR1 Signal #2 Phase: ZB-MR2
 Signal #1 Info : 30Mx0.32mmx 0.50µ Signal #2 Info : 30M x 0.32mm x 0.25µm



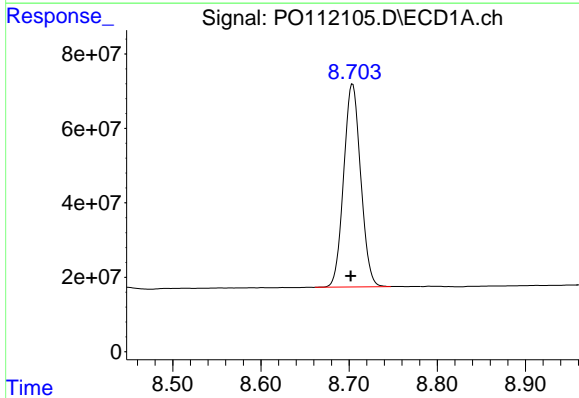


#1 Tetrachloro-m-xylene
 R.T.: 3.674 min
 Delta R.T.: 0.000 min
 Response: 1081749553
 Conc: 100.63 ng/ml

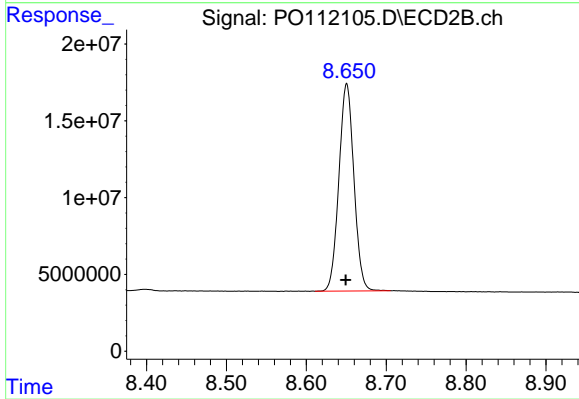
Instrument :
 ECD_O
 ClientSampleId :
 AR1254ICC1000



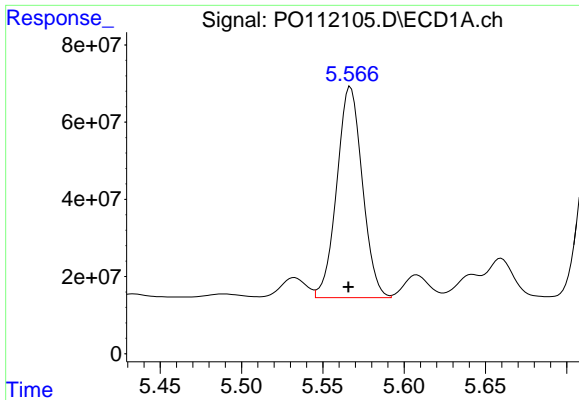
#1 Tetrachloro-m-xylene
 R.T.: 3.666 min
 Delta R.T.: 0.000 min
 Response: 681267764
 Conc: 100.32 ng/ml



#2 Decachlorobiphenyl
 R.T.: 8.704 min
 Delta R.T.: 0.002 min
 Response: 731321852
 Conc: 97.19 ng/ml



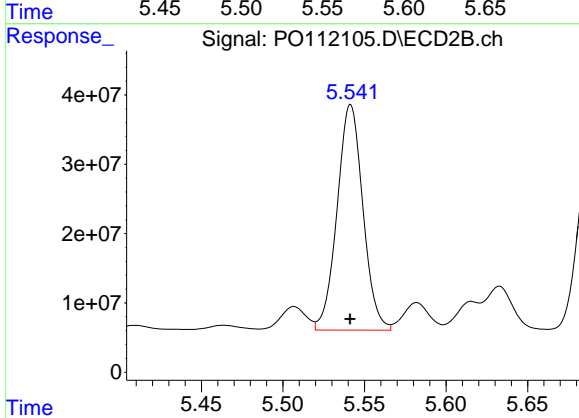
#2 Decachlorobiphenyl
 R.T.: 8.651 min
 Delta R.T.: 0.001 min
 Response: 176203798
 Conc: 95.13 ng/ml



#26 AR-1254-1

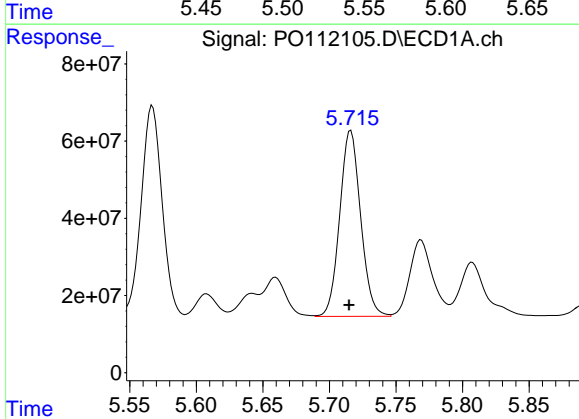
R.T.: 5.567 min
Delta R.T.: 0.001 min
Response: 596387386
Conc: 968.86 ng/ml

Instrument :
ECD_O
ClientSampleId :
AR1254ICC1000



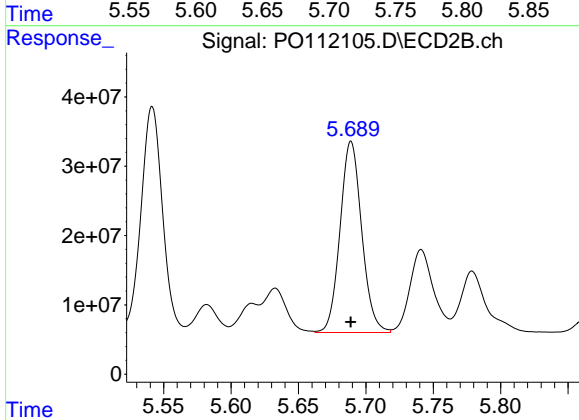
#26 AR-1254-1

R.T.: 5.542 min
Delta R.T.: 0.000 min
Response: 358701312
Conc: 952.43 ng/ml



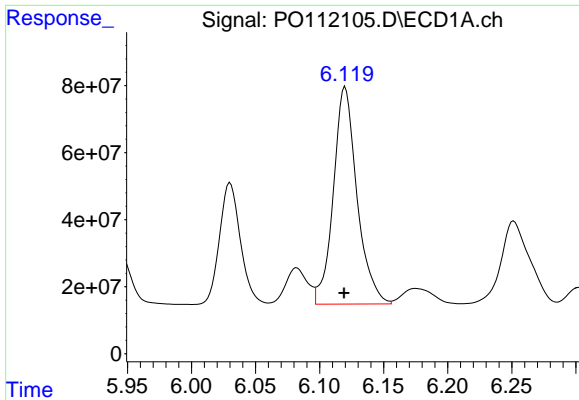
#27 AR-1254-2

R.T.: 5.716 min
Delta R.T.: 0.001 min
Response: 526620849
Conc: 978.25 ng/ml



#27 AR-1254-2

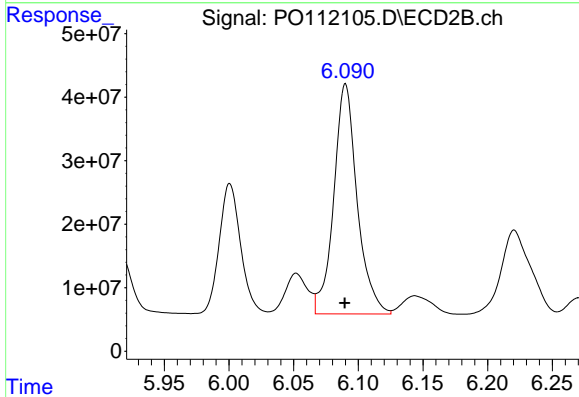
R.T.: 5.689 min
Delta R.T.: 0.000 min
Response: 309319461
Conc: 948.94 ng/ml



#28 AR-1254-3

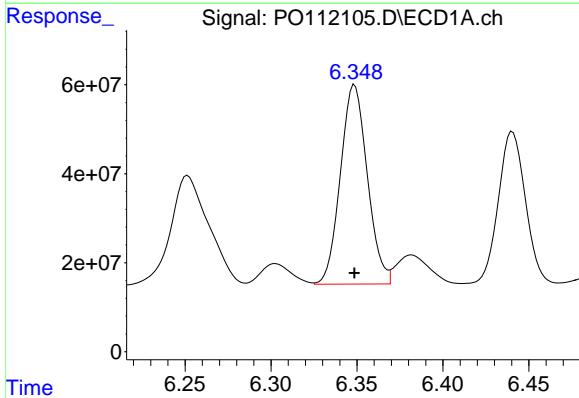
R.T.: 6.120 min
 Delta R.T.: 0.000 min
 Response: 832372124
 Conc: 985.52 ng/ml

Instrument :
 ECD_O
 ClientSampleId :
 AR1254ICC1000



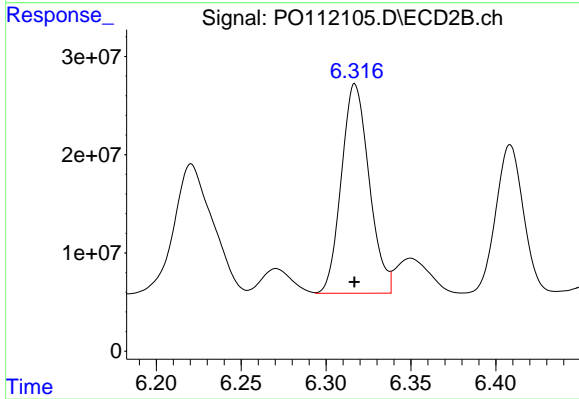
#28 AR-1254-3

R.T.: 6.090 min
 Delta R.T.: 0.000 min
 Response: 457035033
 Conc: 970.96 ng/ml



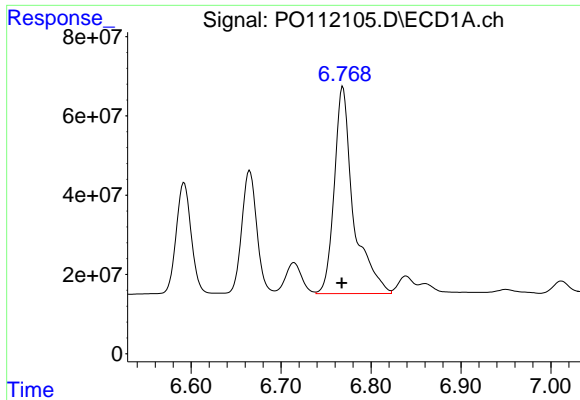
#29 AR-1254-4

R.T.: 6.349 min
 Delta R.T.: 0.000 min
 Response: 488348458
 Conc: 924.82 ng/ml



#29 AR-1254-4

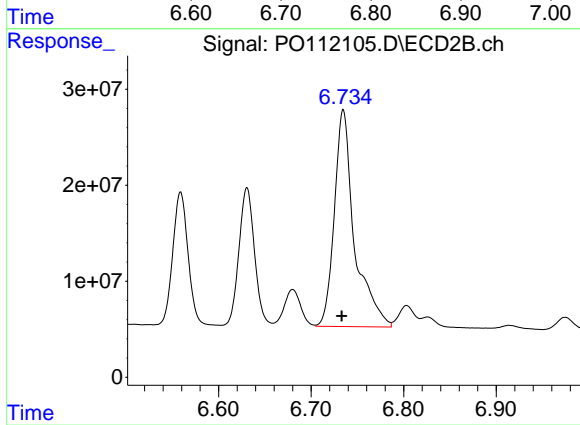
R.T.: 6.317 min
 Delta R.T.: 0.000 min
 Response: 242702235
 Conc: 917.71 ng/ml



#30 AR-1254-5

R.T.: 6.769 min
Delta R.T.: 0.001 min
Response: 772769124
Conc: 976.31 ng/ml

Instrument :
ECD_O
ClientSampleId :
AR1254ICC1000



#30 AR-1254-5

R.T.: 6.735 min
Delta R.T.: 0.002 min
Response: 340856875
Conc: 957.33 ng/ml