

Data Path : Z:\pestpcbsrv\HPCHEM1\ECD\_0\Data\P0070825\  
 Data File : PO112109.D  
 Signal(s) : Signal #1: ECD1A.ch Signal #2: ECD2B.ch  
 Acq On : 08 Jul 2025 20:28  
 Operator : YP/AJ  
 Sample : AR1254ICC050  
 Misc :  
 ALS Vial : 24 Sample Multiplier: 1

Instrument :  
 ECD\_0  
 ClientSampleId :  
 AR1254ICC050

Integration File signal 1: autoint1.e  
 Integration File signal 2: autoint2.e  
 Quant Time: Jul 09 03:13:58 2025  
 Quant Method : Z:\pestpcbsrv\HPCHEM1\ECD\_0\methods\P0070825.M  
 Quant Title : GC EXTRACTABLES  
 QLast Update : Wed Jul 09 03:10:24 2025  
 Response via : Initial Calibration  
 Integrator: ChemStation

Volume Inj. : 2 µl  
 Signal #1 Phase : ZB-MR1 Signal #2 Phase: ZB-MR2  
 Signal #1 Info : 30Mx0.32mmx 0.50µ Signal #2 Info : 30M x 0.32mm x 0.25µm

Compound	RT#1	RT#2	Resp#1	Resp#2	ng/ml	ng/ml
-----						
System Monitoring Compounds						
1) SA Tetrachlo...	3.672	3.666	45533046	29689581	4.236	4.372
2) SA Decachlor...	8.701	8.650	32557073	8527820	4.327	4.604
Target Compounds						
26) L6 AR-1254-1	5.565	5.541	30856160	21377359	50.127	56.761
27) L6 AR-1254-2	5.714	5.688	25962033	19942992	48.227	61.182 #
28) L6 AR-1254-3	6.118	6.089	40531096	25609316	47.989	54.406
29) L6 AR-1254-4	6.346	6.316	23345099	12905837	44.210	48.800
30) L6 AR-1254-5	6.765	6.733	35718880	18096474	45.127	50.826
-----						

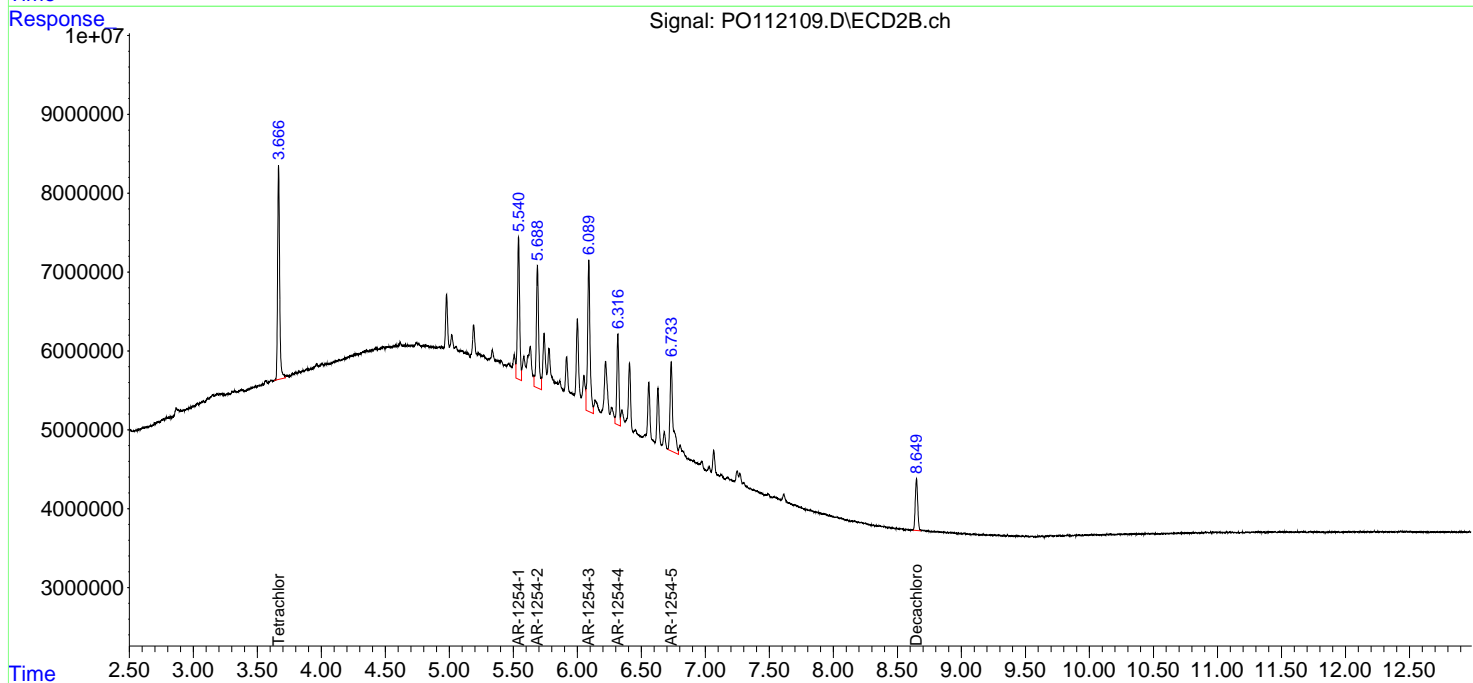
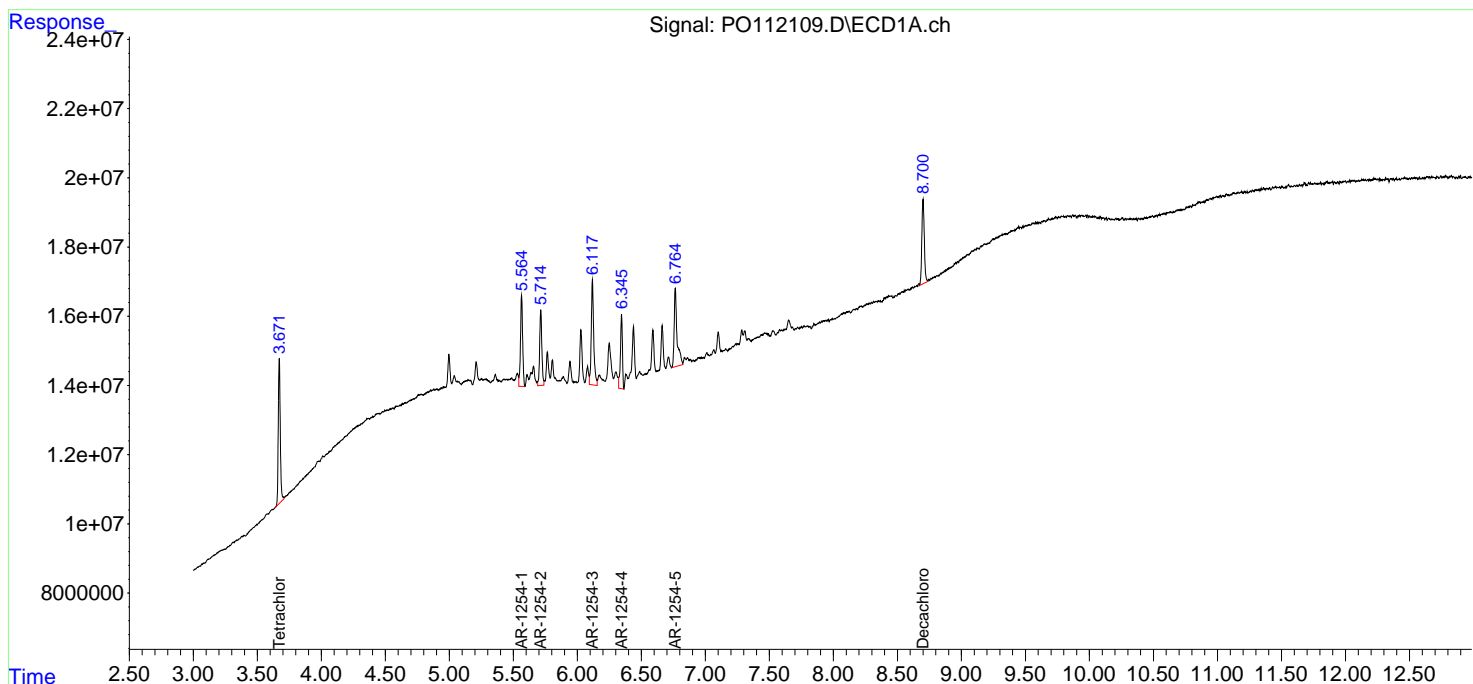
(f)=RT Delta > 1/2 Window (#)=Amounts differ by > 25% (m)=manual int.

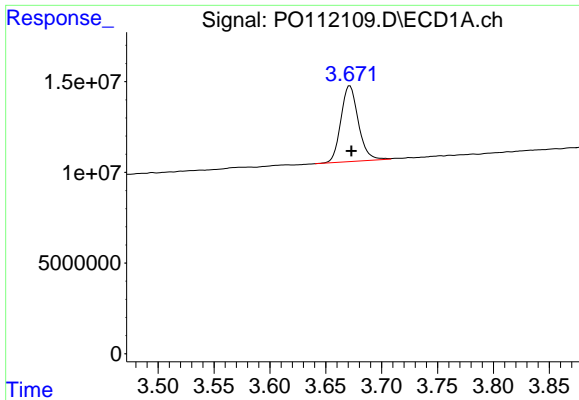
Data Path : Z:\pestpcbsrv\HPCHEM1\ECD\_O\Data\PO070825\  
 Data File : PO112109.D  
 Signal(s) : Signal #1: ECD1A.ch Signal #2: ECD2B.ch  
 Acq On : 08 Jul 2025 20:28  
 Operator : YP/AJ  
 Sample : AR1254IC050  
 Misc :  
 ALS Vial : 24 Sample Multiplier: 1

Instrument :  
 ECD\_O  
 ClientSampleId :  
 AR1254IC050

Integration File signal 1: autoint1.e  
 Integration File signal 2: autoint2.e  
 Quant Time: Jul 09 03:13:58 2025  
 Quant Method : Z:\pestpcbsrv\HPCHEM1\ECD\_O\methods\PO070825.M  
 Quant Title : GC EXTRACTABLES  
 QLast Update : Wed Jul 09 03:10:24 2025  
 Response via : Initial Calibration  
 Integrator: ChemStation

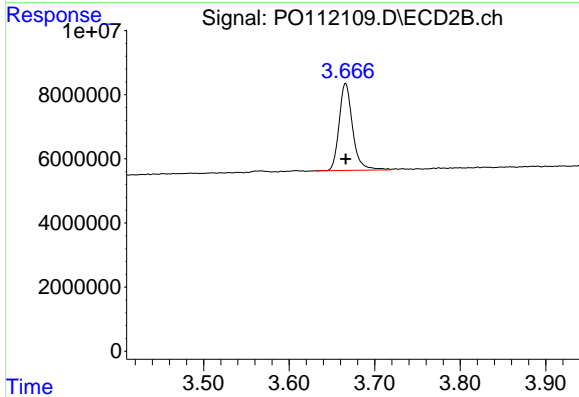
Volume Inj. : 2 µl  
 Signal #1 Phase : ZB-MR1 Signal #2 Phase: ZB-MR2  
 Signal #1 Info : 30Mx0.32mmx 0.50µm Signal #2 Info : 30M x 0.32mm x 0.25µm



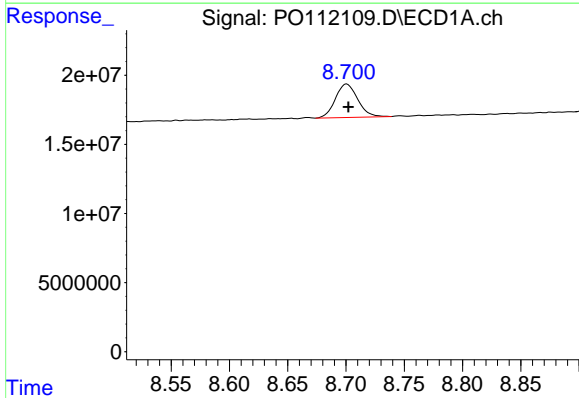


#1 Tetrachloro-m-xylene  
 R.T.: 3.672 min  
 Delta R.T.: -0.001 min  
 Response: 45533046  
 Conc: 4.24 ng/ml

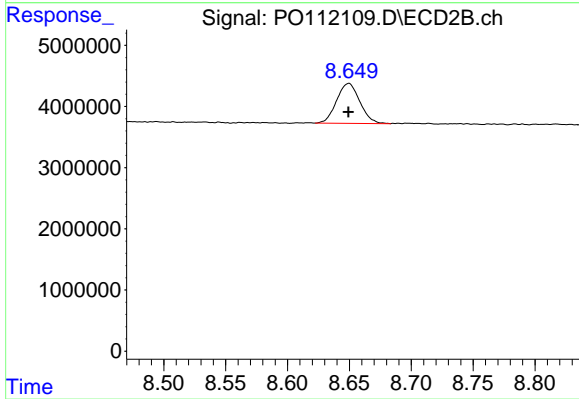
Instrument :  
 ECD\_O  
 ClientSampleId :  
 AR1254ICC050



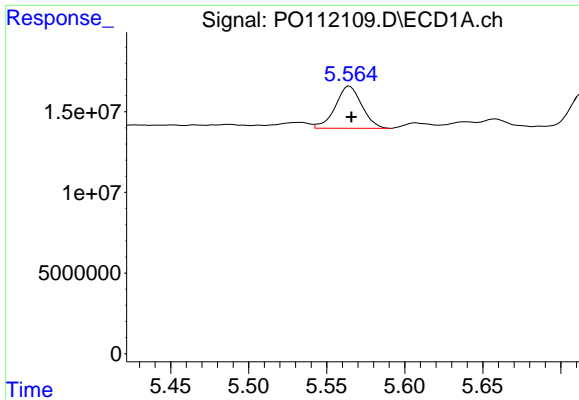
#1 Tetrachloro-m-xylene  
 R.T.: 3.666 min  
 Delta R.T.: 0.000 min  
 Response: 29689581  
 Conc: 4.37 ng/ml



#2 Decachlorobiphenyl  
 R.T.: 8.701 min  
 Delta R.T.: -0.001 min  
 Response: 32557073  
 Conc: 4.33 ng/ml



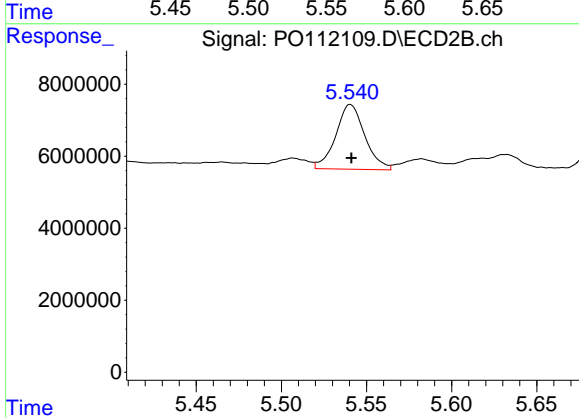
#2 Decachlorobiphenyl  
 R.T.: 8.650 min  
 Delta R.T.: 0.000 min  
 Response: 8527820  
 Conc: 4.60 ng/ml



#26 AR-1254-1

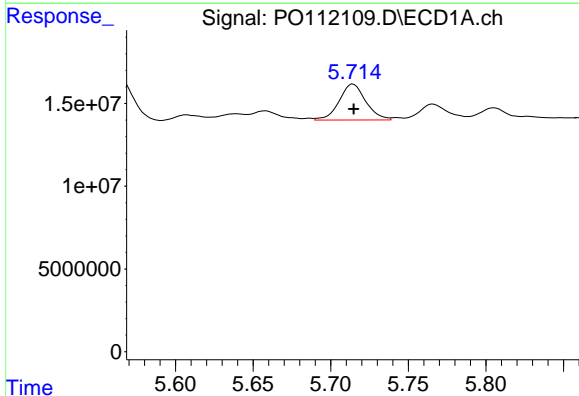
R.T.: 5.565 min  
 Delta R.T.: -0.001 min  
 Response: 30856160  
 Conc: 50.13 ng/ml

Instrument :  
 ECD\_O  
 ClientSampleId :  
 AR1254ICC050



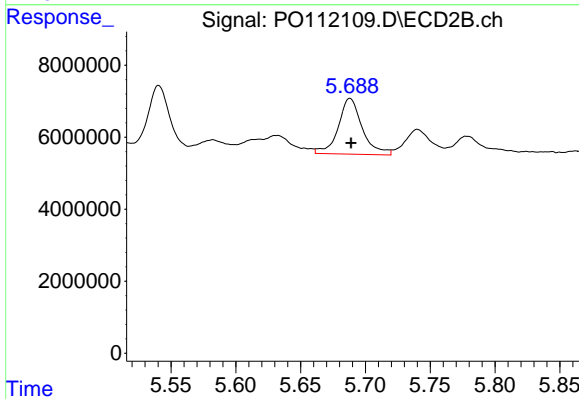
#26 AR-1254-1

R.T.: 5.541 min  
 Delta R.T.: 0.000 min  
 Response: 21377359  
 Conc: 56.76 ng/ml



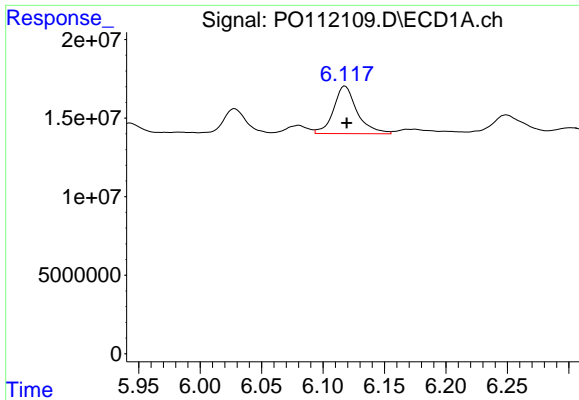
#27 AR-1254-2

R.T.: 5.714 min  
 Delta R.T.: 0.000 min  
 Response: 25962033  
 Conc: 48.23 ng/ml



#27 AR-1254-2

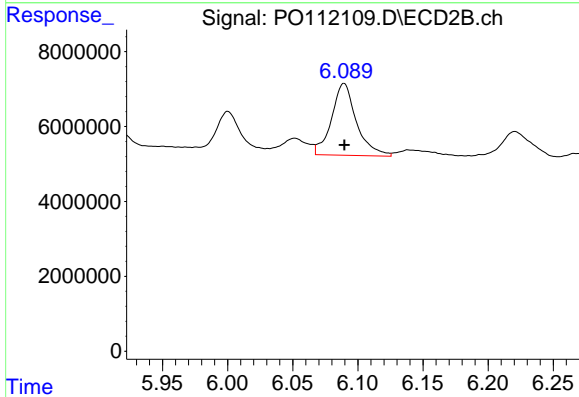
R.T.: 5.688 min  
 Delta R.T.: 0.000 min  
 Response: 19942992  
 Conc: 61.18 ng/ml



#28 AR-1254-3

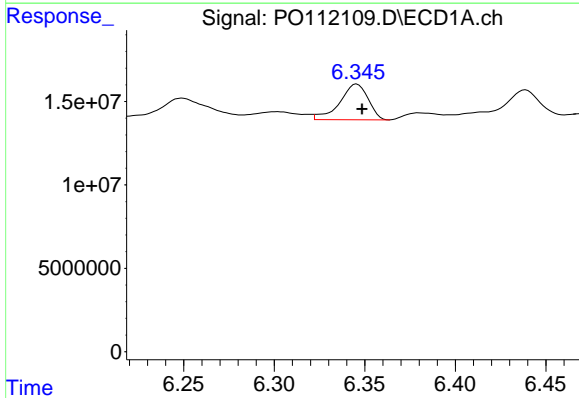
R.T.: 6.118 min  
 Delta R.T.: -0.001 min  
 Response: 40531096  
 Conc: 47.99 ng/ml

Instrument :  
 ECD\_O  
 ClientSampleId :  
 AR1254IC050



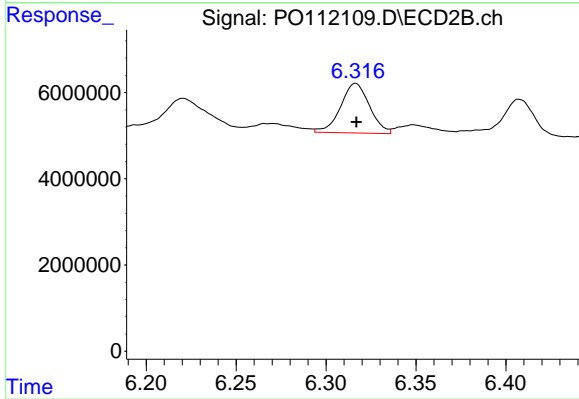
#28 AR-1254-3

R.T.: 6.089 min  
 Delta R.T.: 0.000 min  
 Response: 25609316  
 Conc: 54.41 ng/ml



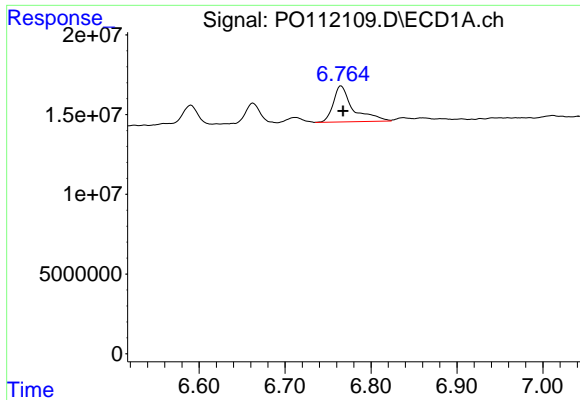
#29 AR-1254-4

R.T.: 6.346 min  
 Delta R.T.: -0.003 min  
 Response: 23345099  
 Conc: 44.21 ng/ml



#29 AR-1254-4

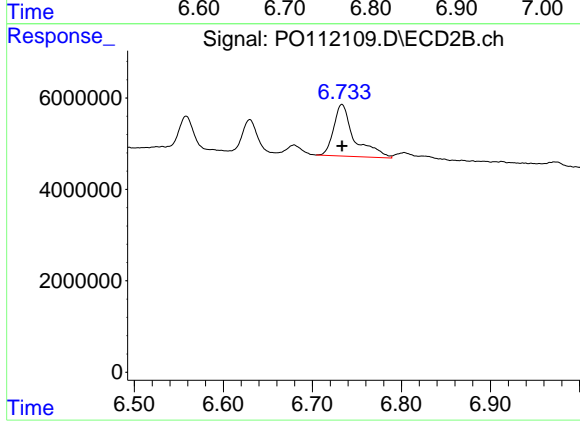
R.T.: 6.316 min  
 Delta R.T.: 0.000 min  
 Response: 12905837  
 Conc: 48.80 ng/ml



#30 AR-1254-5

R.T.: 6.765 min  
 Delta R.T.: -0.002 min  
 Response: 35718880  
 Conc: 45.13 ng/ml

Instrument :  
 ECD\_O  
 ClientSampleId :  
 AR1254IC050



#30 AR-1254-5

R.T.: 6.733 min  
 Delta R.T.: 0.000 min  
 Response: 18096474  
 Conc: 50.83 ng/ml