

Data Path : Z:\pestpcbsrv\HPCHEM1\ECD\_0\Data\P0070825\  
 Data File : P0112110.D  
 Signal(s) : Signal #1: ECD1A.ch Signal #2: ECD2B.ch  
 Acq On : 08 Jul 2025 20:47  
 Operator : YP/AJ  
 Sample : AR1262ICC500  
 Misc :  
 ALS Vial : 25 Sample Multiplier: 1

**Instrument :**  
 ECD\_0  
**ClientSampleId :**  
 AR1262ICC500

Integration File signal 1: autoint1.e  
 Integration File signal 2: autoint2.e  
 Quant Time: Jul 09 03:29:27 2025  
 Quant Method : Z:\pestpcbsrv\HPCHEM1\ECD\_0\methods\P0070825.M  
 Quant Title : GC EXTRACTABLES  
 QLast Update : Wed Jul 09 03:25:20 2025  
 Response via : Initial Calibration  
 Integrator: ChemStation

Volume Inj. : 2 µl  
 Signal #1 Phase : ZB-MR1 Signal #2 Phase: ZB-MR2  
 Signal #1 Info : 30Mx0.32mmx 0.50µ Signal #2 Info : 30M x 0.32mm x 0.25µm

Compound	RT#1	RT#2	Resp#1	Resp#2	ng/ml	ng/ml
-----						
System Monitoring Compounds						
1) SA Tetrachlo...	3.672	3.666	525.8E6	329.4E6	50.000	50.000
2) SA Decachlor...	8.703	8.651	370.9E6	90608483	50.000	50.000
Target Compounds						
36) L8 AR-1262-1	6.807	6.772	510.8E6	203.7E6	500.000	500.000
37) L8 AR-1262-2	7.310	7.272	819.7E6	256.3E6	500.000	500.000
38) L8 AR-1262-3	7.592	7.554	321.0E6	89762034	500.000	500.000
39) L8 AR-1262-4	7.657	7.618	535.7E6	145.5E6	500.000	500.000
40) L8 AR-1262-5	8.153	8.110	224.1E6	52891763	500.000	500.000
-----						

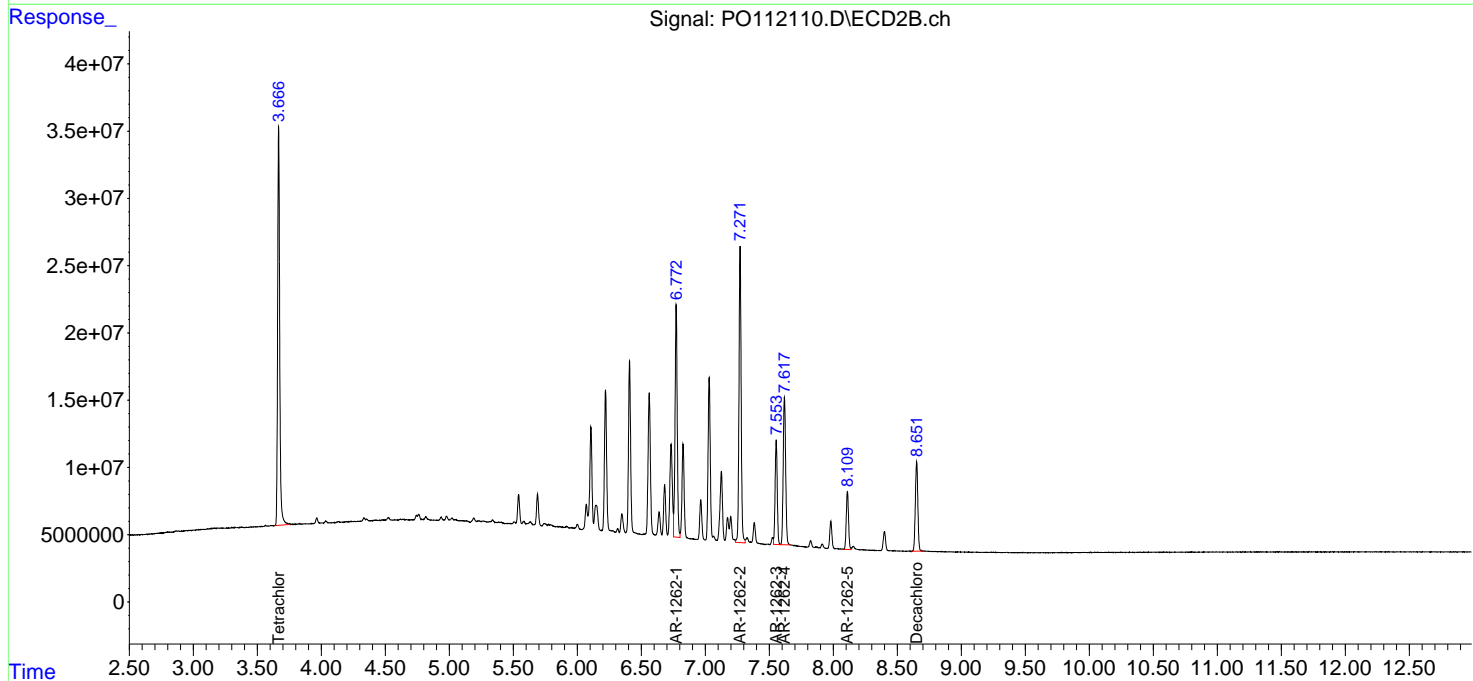
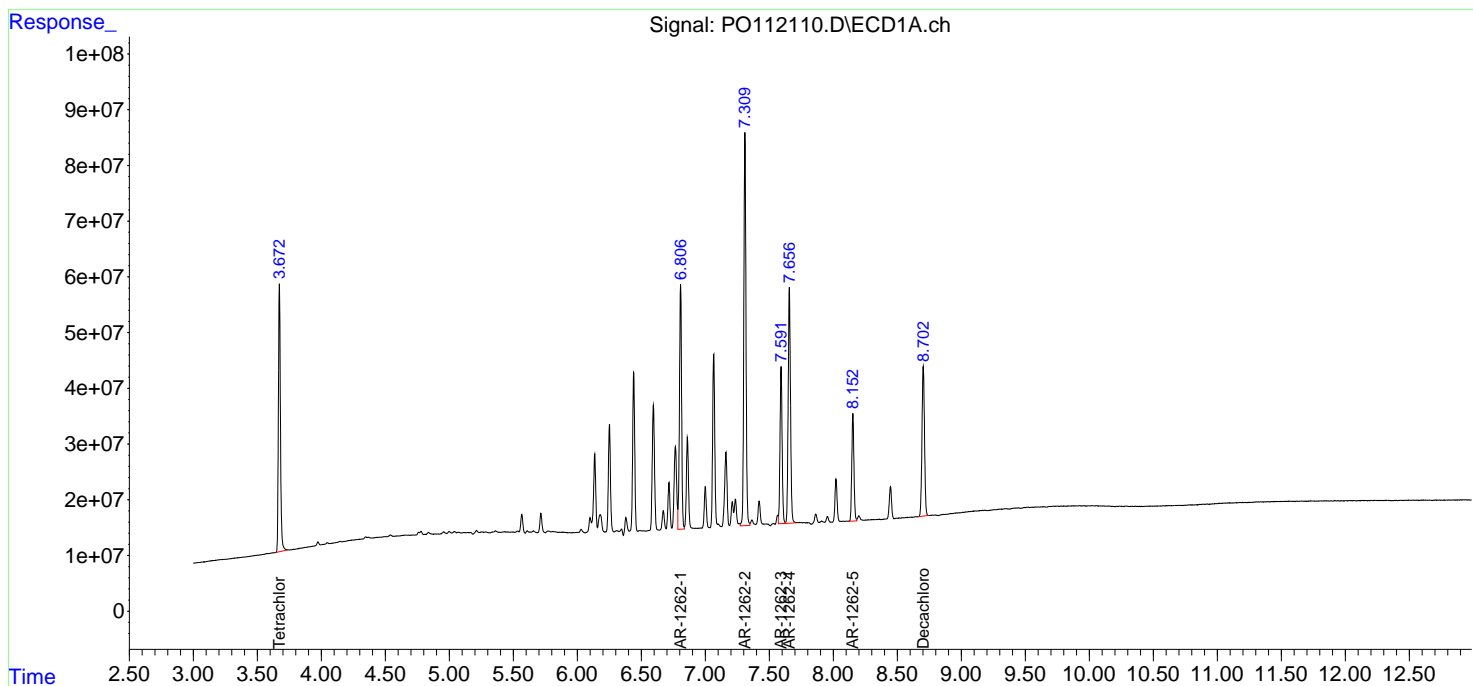
(f)=RT Delta > 1/2 Window (#)=Amounts differ by > 25% (m)=manual int.

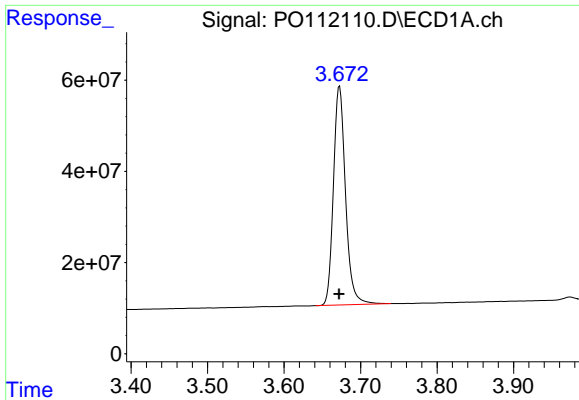
Data Path : Z:\pestpcbsrv\HPCHEM1\ECD\_O\Data\P0070825\  
 Data File : P0112110.D  
 Signal(s) : Signal #1: ECD1A.ch Signal #2: ECD2B.ch  
 Acq On : 08 Jul 2025 20:47  
 Operator : YP/AJ  
 Sample : AR1262ICC500  
 Misc :  
 ALS Vial : 25 Sample Multiplier: 1

Instrument :  
 ECD\_O  
 ClientSampleId :  
 AR1262ICC500

Integration File signal 1: autoint1.e  
 Integration File signal 2: autoint2.e  
 Quant Time: Jul 09 03:29:27 2025  
 Quant Method : Z:\pestpcbsrv\HPCHEM1\ECD\_O\methods\P0070825.M  
 Quant Title : GC EXTRACTABLES  
 QLast Update : Wed Jul 09 03:25:20 2025  
 Response via : Initial Calibration  
 Integrator: ChemStation

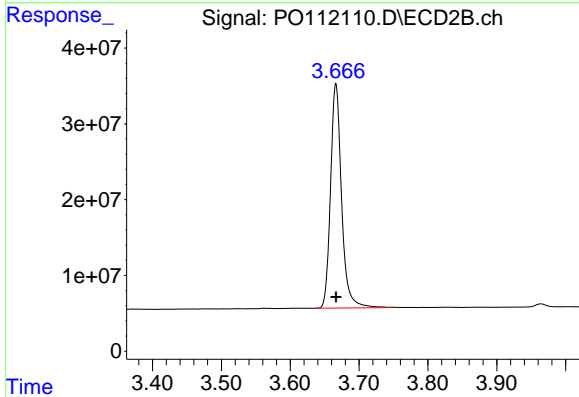
Volume Inj. : 2 µl  
 Signal #1 Phase : ZB-MR1 Signal #2 Phase: ZB-MR2  
 Signal #1 Info : 30Mx0.32mmx 0.50µm Signal #2 Info : 30M x 0.32mm x 0.25µm



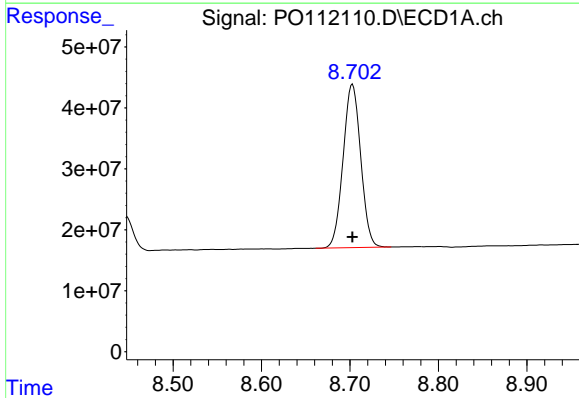


#1 Tetrachloro-m-xylene  
 R.T.: 3.672 min  
 Delta R.T.: 0.000 min  
 Response: 525756507  
 Conc: 50.00 ng/ml

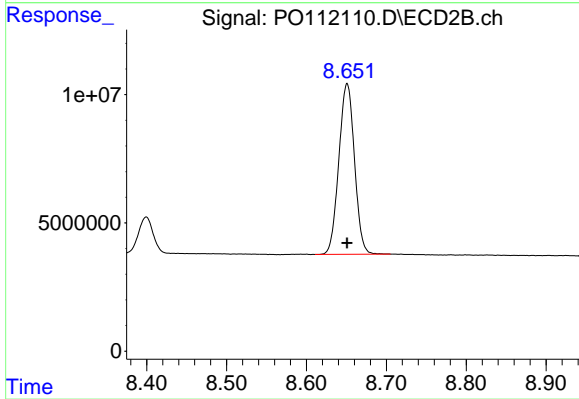
Instrument :  
 ECD\_O  
 ClientSampleId :  
 AR1262ICC500



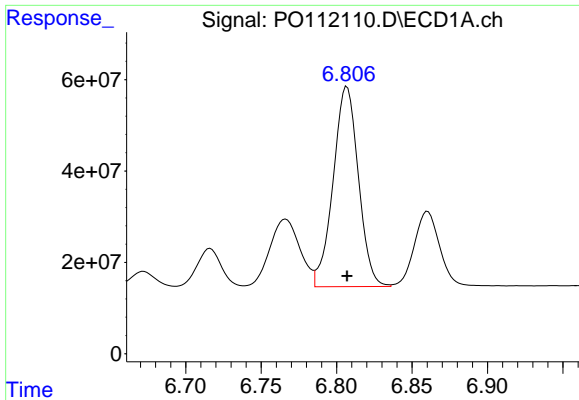
#1 Tetrachloro-m-xylene  
 R.T.: 3.666 min  
 Delta R.T.: 0.000 min  
 Response: 329387316  
 Conc: 50.00 ng/ml



#2 Decachlorobiphenyl  
 R.T.: 8.703 min  
 Delta R.T.: 0.000 min  
 Response: 370896650  
 Conc: 50.00 ng/ml



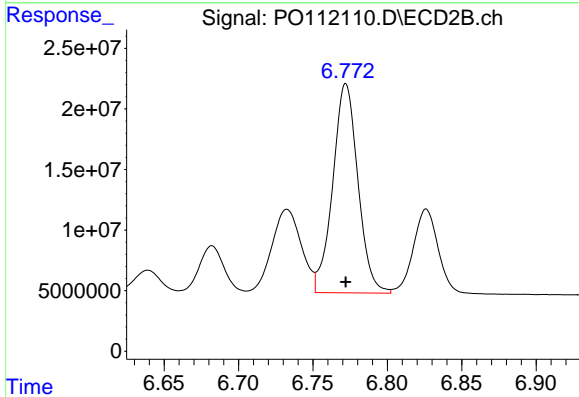
#2 Decachlorobiphenyl  
 R.T.: 8.651 min  
 Delta R.T.: 0.000 min  
 Response: 90608483  
 Conc: 50.00 ng/ml



#36 AR-1262-1

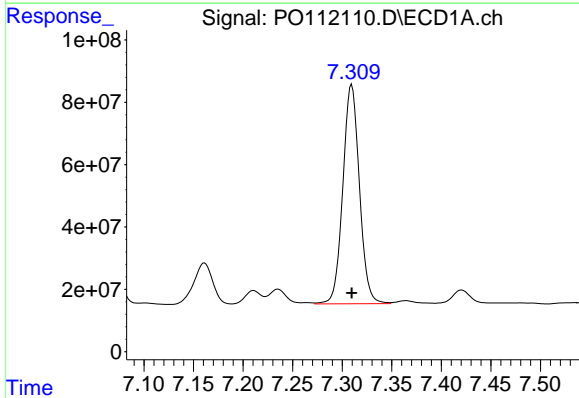
R.T.: 6.807 min  
 Delta R.T.: 0.000 min  
 Response: 510843479  
 Conc: 500.00 ng/ml

Instrument :  
 ECD\_O  
 ClientSampleId :  
 AR1262ICC500



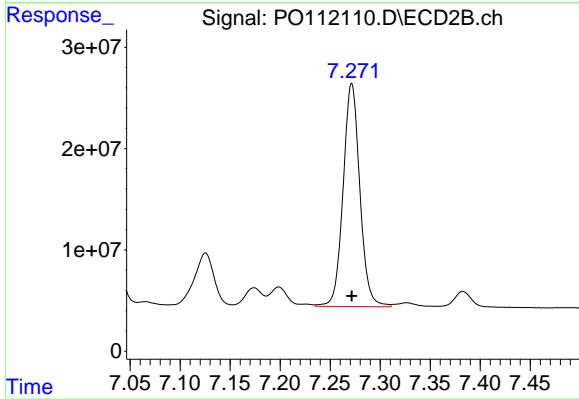
#36 AR-1262-1

R.T.: 6.772 min  
 Delta R.T.: 0.000 min  
 Response: 203660426  
 Conc: 500.00 ng/ml



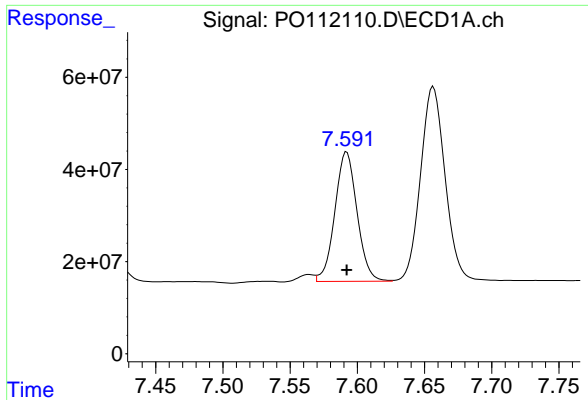
#37 AR-1262-2

R.T.: 7.310 min  
 Delta R.T.: 0.000 min  
 Response: 819686360  
 Conc: 500.00 ng/ml



#37 AR-1262-2

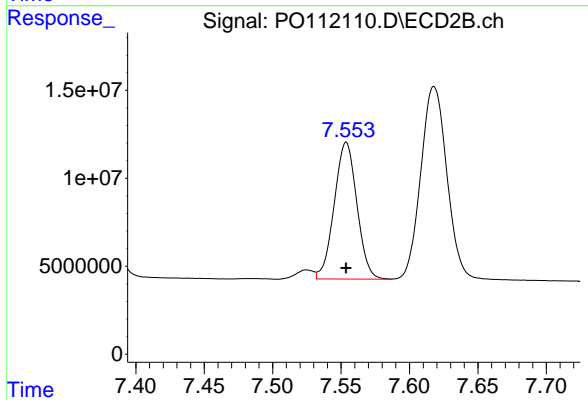
R.T.: 7.272 min  
 Delta R.T.: 0.000 min  
 Response: 256274286  
 Conc: 500.00 ng/ml



#38 AR-1262-3

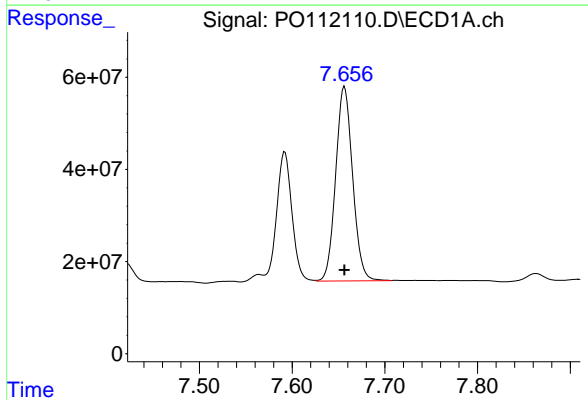
R.T.: 7.592 min  
 Delta R.T.: 0.000 min  
 Response: 320987602  
 Conc: 500.00 ng/ml

Instrument :  
 ECD\_O  
 ClientSampleId :  
 AR1262ICC500



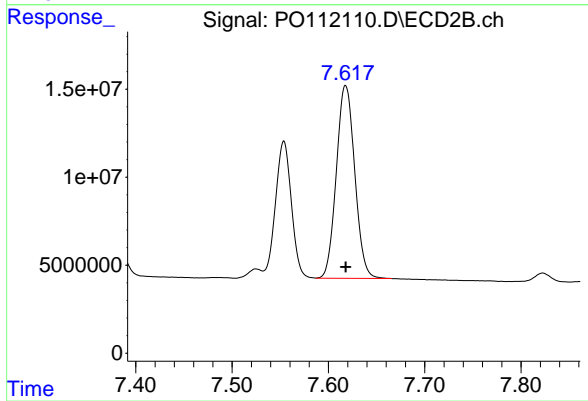
#38 AR-1262-3

R.T.: 7.554 min  
 Delta R.T.: 0.000 min  
 Response: 89762034  
 Conc: 500.00 ng/ml



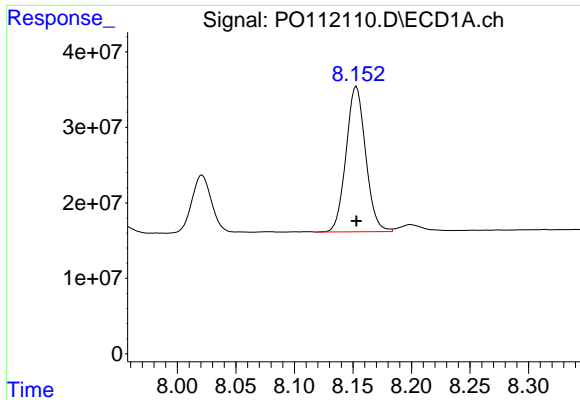
#39 AR-1262-4

R.T.: 7.657 min  
 Delta R.T.: 0.000 min  
 Response: 535717312  
 Conc: 500.00 ng/ml



#39 AR-1262-4

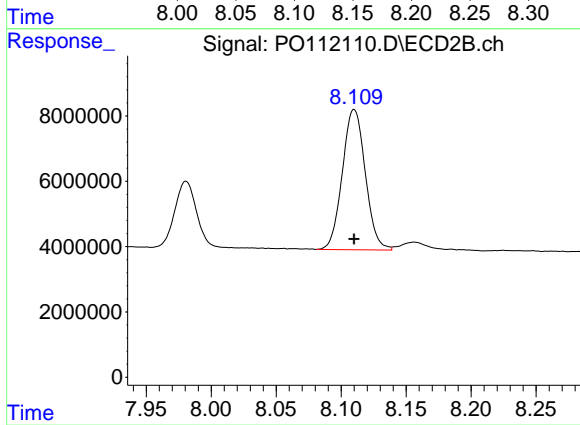
R.T.: 7.618 min  
 Delta R.T.: 0.000 min  
 Response: 145459780  
 Conc: 500.00 ng/ml



#40 AR-1262-5

R.T.: 8.153 min  
Delta R.T.: 0.000 min  
Response: 224070443  
Conc: 500.00 ng/ml

Instrument :  
ECD\_O  
ClientSampleId :  
AR1262ICC500



#40 AR-1262-5

R.T.: 8.110 min  
Delta R.T.: 0.000 min  
Response: 52891763  
Conc: 500.00 ng/ml