

Data Path : Z:\pestpcbsrv\HPCHEM1\ECD_0\Data\P0070825\
 Data File : P0112111.D
 Signal(s) : Signal #1: ECD1A.ch Signal #2: ECD2B.ch
 Acq On : 08 Jul 2025 21:04
 Operator : YP/AJ
 Sample : AR1268ICC1000
 Misc :
 ALS Vial : 26 Sample Multiplier: 1

Instrument :
 ECD_0
 ClientSampleId :
 AR1268ICC1000

Integration File signal 1: autoint1.e
 Integration File signal 2: autoint2.e
 Quant Time: Jul 09 03:41:55 2025
 Quant Method : Z:\pestpcbsrv\HPCHEM1\ECD_0\methods\P0070825.M
 Quant Title : GC EXTRACTABLES
 QLast Update : Wed Jul 09 03:33:24 2025
 Response via : Initial Calibration
 Integrator: ChemStation

Volume Inj. : 2 µl
 Signal #1 Phase : ZB-MR1 Signal #2 Phase: ZB-MR2
 Signal #1 Info : 30Mx0.32mmx 0.50µ Signal #2 Info : 30M x 0.32mm x 0.25µm

Compound	RT#1	RT#2	Resp#1	Resp#2	ng/ml	ng/ml

System Monitoring Compounds						
1) SA Tetrachlo...	3.672	3.667	1082.8E6	673.3E6	101.066	99.562
2) SA Decachlor...	8.702	8.650	1378.0E6	313.9E6	99.628	96.478
Target Compounds						
41) L9 AR-1268-1	7.590	7.554	1933.7E6	486.6E6	1000.189	974.104
42) L9 AR-1268-2	7.656	7.619	1621.3E6	414.1E6	997.801	973.991
43) L9 AR-1268-3	7.862	7.823	1337.7E6	309.6E6	989.536	960.409
44) L9 AR-1268-4	8.151	8.111	513.2E6	111.4E6	998.446	963.536
45) L9 AR-1268-5	8.445	8.399	3474.7E6	736.5E6	1008.979	983.566

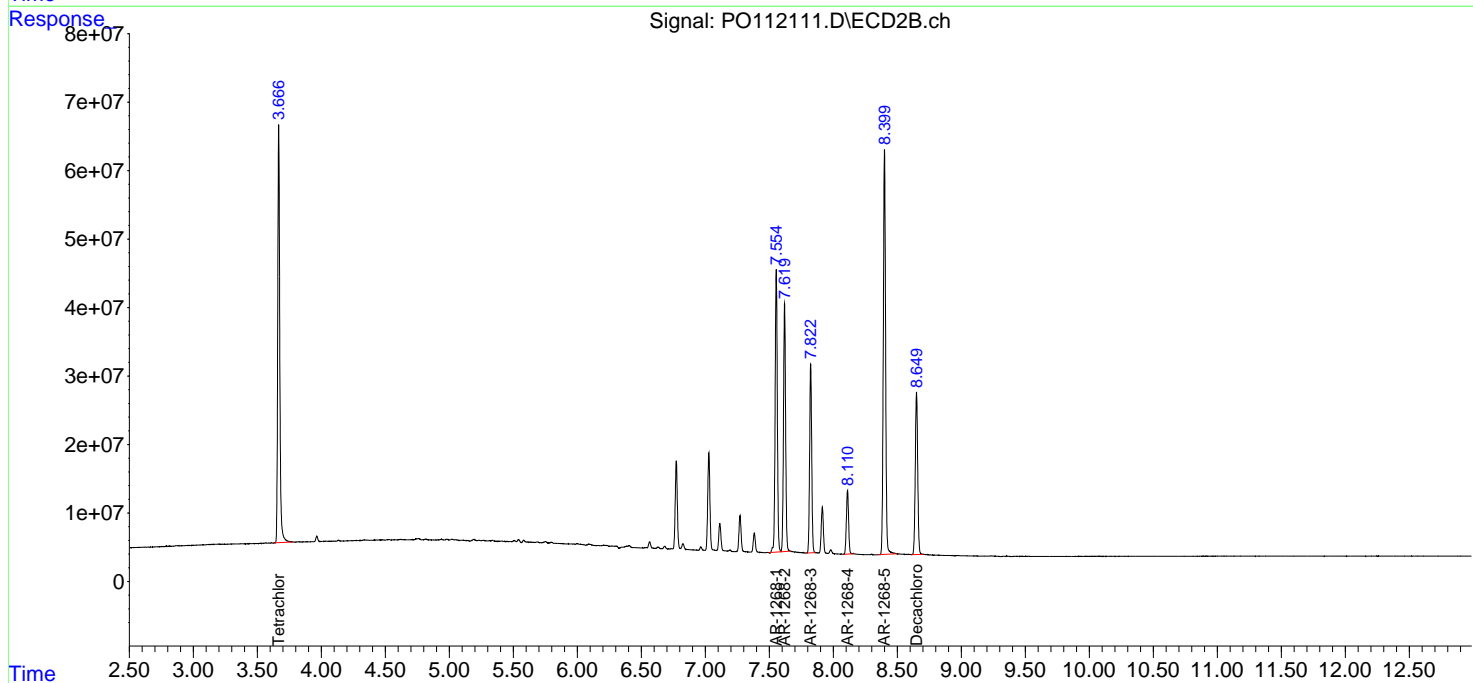
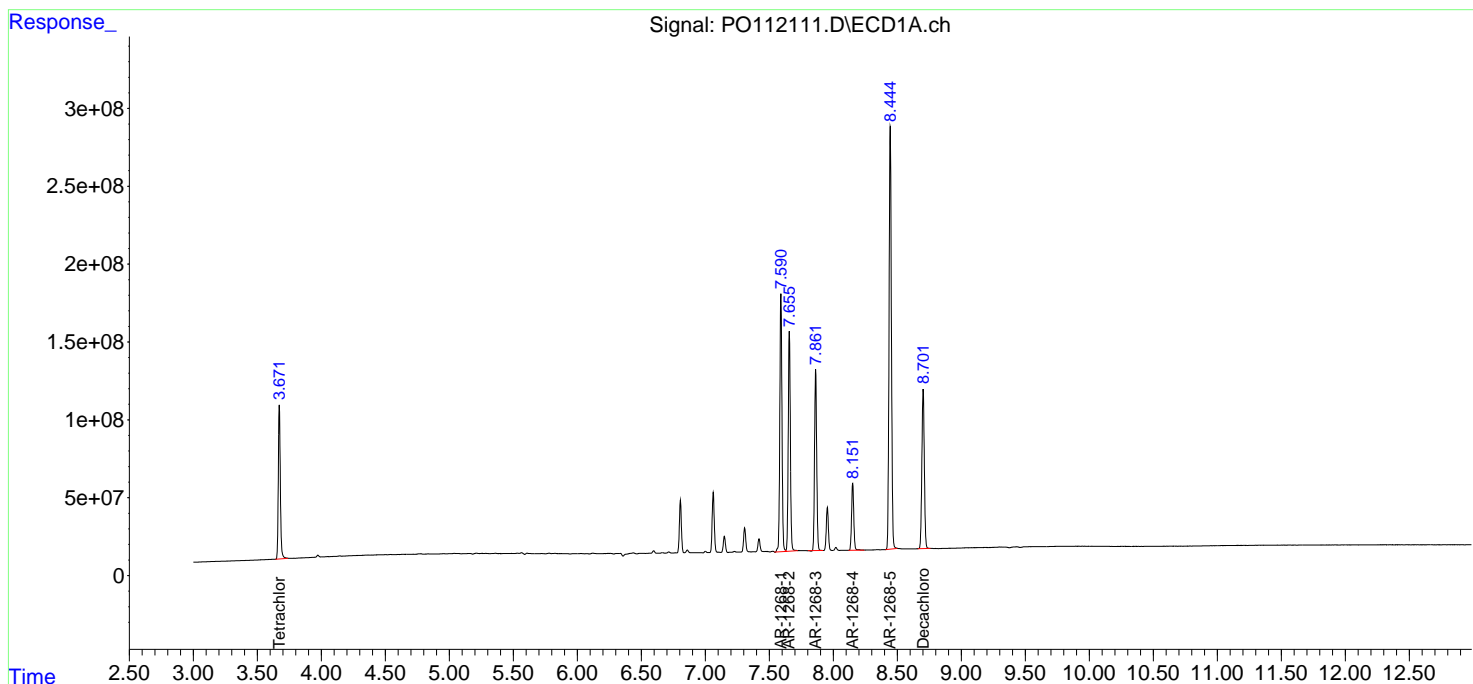
(f)=RT Delta > 1/2 Window (#)=Amounts differ by > 25% (m)=manual int.

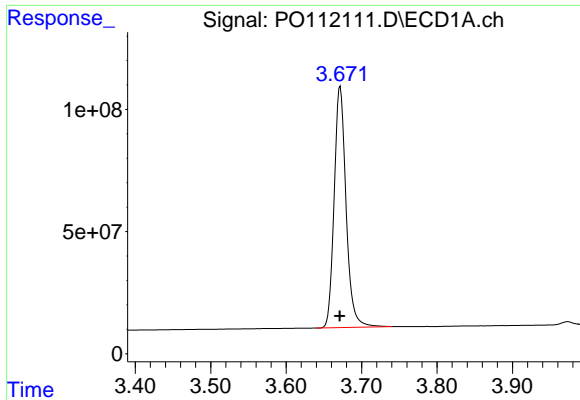
Data Path : Z:\pestpcbsrv\HPCHEM1\ECD_O\Data\P0070825\
 Data File : P0112111.D
 Signal(s) : Signal #1: ECD1A.ch Signal #2: ECD2B.ch
 Acq On : 08 Jul 2025 21:04
 Operator : YP/AJ
 Sample : AR1268ICC1000
 Misc :
 ALS Vial : 26 Sample Multiplier: 1

Instrument :
 ECD_O
 ClientSampleId :
 AR1268ICC1000

Integration File signal 1: autoint1.e
 Integration File signal 2: autoint2.e
 Quant Time: Jul 09 03:41:55 2025
 Quant Method : Z:\pestpcbsrv\HPCHEM1\ECD_O\methods\P0070825.M
 Quant Title : GC EXTRACTABLES
 QLast Update : Wed Jul 09 03:33:24 2025
 Response via : Initial Calibration
 Integrator: ChemStation

Volume Inj. : 2 µl
 Signal #1 Phase : ZB-MR1 Signal #2 Phase: ZB-MR2
 Signal #1 Info : 30Mx0.32mmx 0.50µm Signal #2 Info : 30M x 0.32mm x 0.25µm

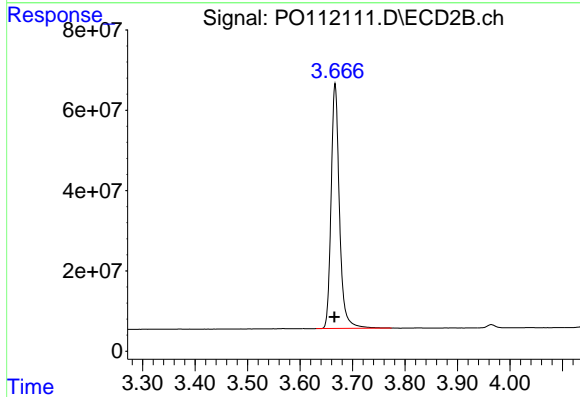




#1 Tetrachloro-m-xylene

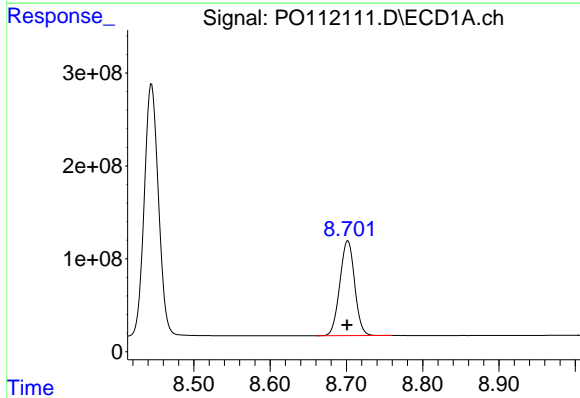
R.T.: 3.672 min
 Delta R.T.: 0.000 min
 Response: 1082841647
 Conc: 101.07 ng/ml

Instrument :
 ECD_O
 ClientSampleId :
 AR1268ICC1000



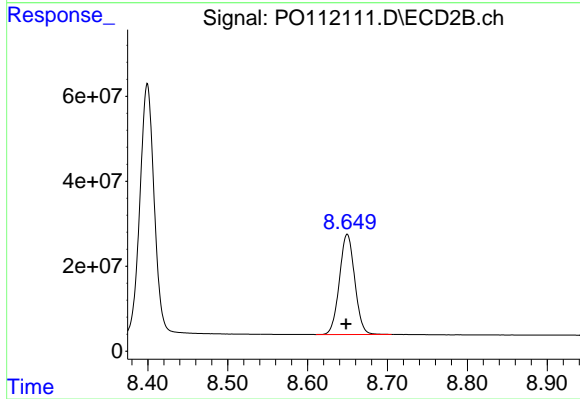
#1 Tetrachloro-m-xylene

R.T.: 3.667 min
 Delta R.T.: 0.001 min
 Response: 673253587
 Conc: 99.56 ng/ml



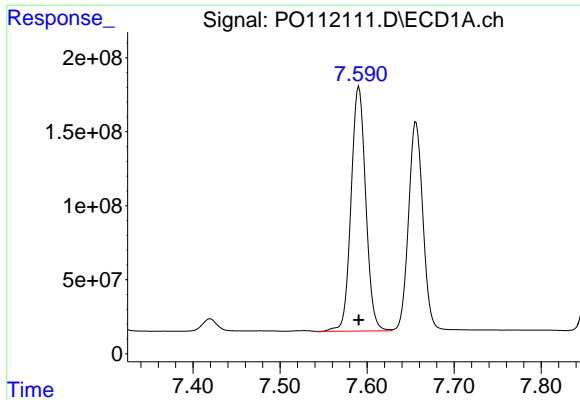
#2 Decachlorobiphenyl

R.T.: 8.702 min
 Delta R.T.: 0.000 min
 Response: 1377978961
 Conc: 99.63 ng/ml



#2 Decachlorobiphenyl

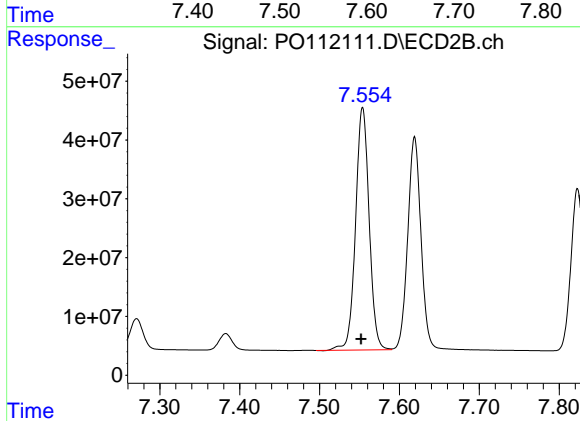
R.T.: 8.650 min
 Delta R.T.: 0.002 min
 Response: 313919147
 Conc: 96.48 ng/ml



#41 AR-1268-1

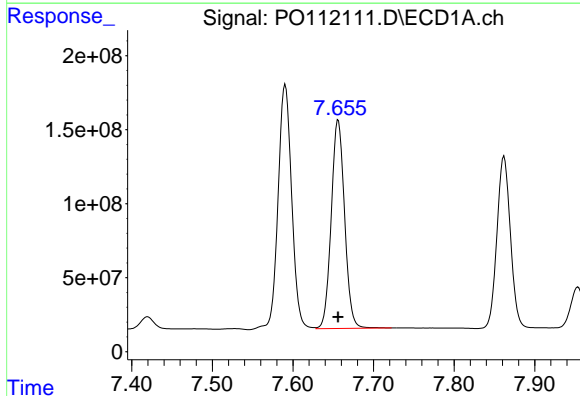
R.T.: 7.590 min
 Delta R.T.: 0.000 min
 Response: 1933697823
 Conc: 1000.19 ng/ml

Instrument :
 ECD_O
 ClientSampleId :
 AR1268ICC1000



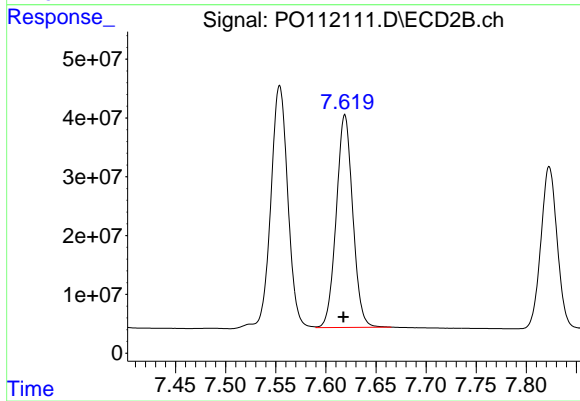
#41 AR-1268-1

R.T.: 7.554 min
 Delta R.T.: 0.002 min
 Response: 486556055
 Conc: 974.10 ng/ml



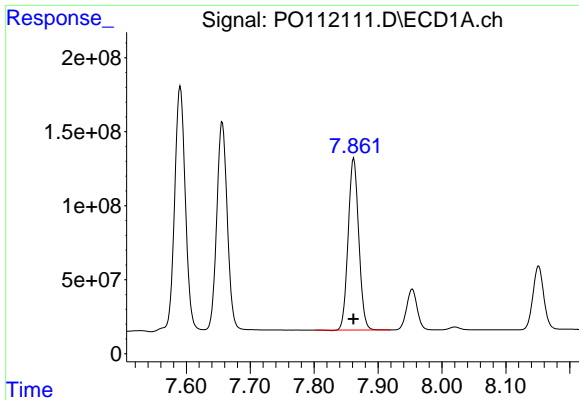
#42 AR-1268-2

R.T.: 7.656 min
 Delta R.T.: 0.000 min
 Response: 1621310763
 Conc: 997.80 ng/ml



#42 AR-1268-2

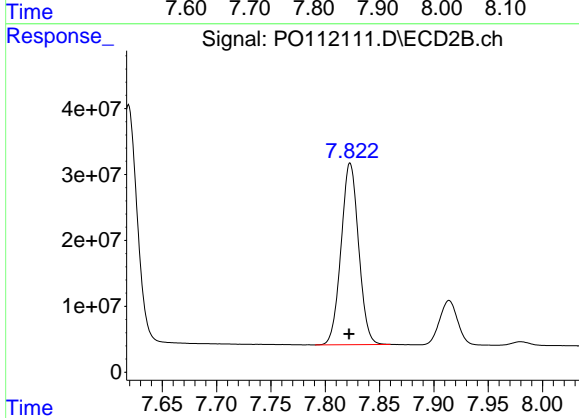
R.T.: 7.619 min
 Delta R.T.: 0.002 min
 Response: 414074889
 Conc: 973.99 ng/ml



#43 AR-1268-3

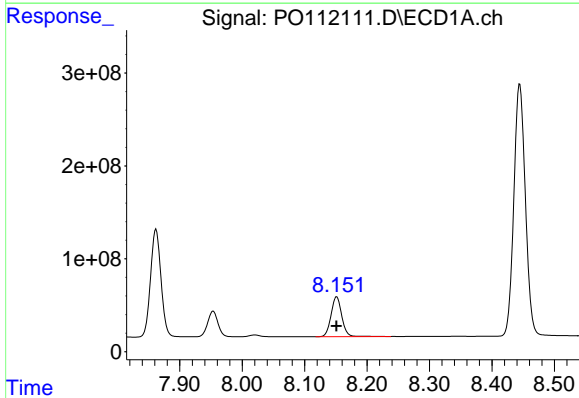
R.T.: 7.862 min
 Delta R.T.: 0.000 min
 Response: 1337748865
 Conc: 989.54 ng/ml

Instrument :
 ECD_O
 ClientSampleId :
 AR1268ICC1000



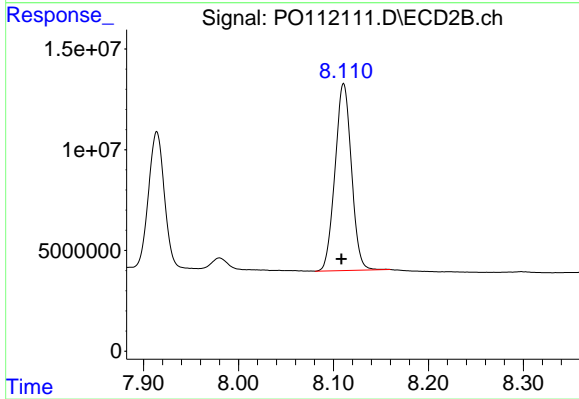
#43 AR-1268-3

R.T.: 7.823 min
 Delta R.T.: 0.001 min
 Response: 309607188
 Conc: 960.41 ng/ml



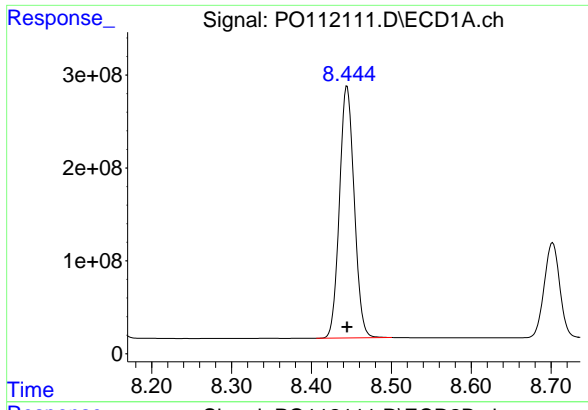
#44 AR-1268-4

R.T.: 8.151 min
 Delta R.T.: 0.000 min
 Response: 513241738
 Conc: 998.45 ng/ml



#44 AR-1268-4

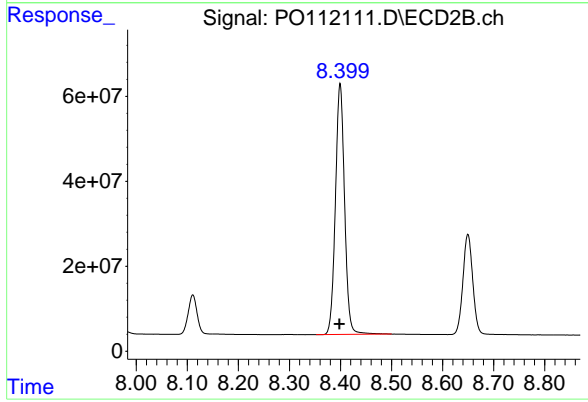
R.T.: 8.111 min
 Delta R.T.: 0.002 min
 Response: 111375490
 Conc: 963.54 ng/ml



#45 AR-1268-5

R.T.: 8.445 min
 Delta R.T.: 0.000 min
 Response: 3474681887
 Conc: 1008.98 ng/m

Instrument :
 ECD_O
 ClientSampleId :
 AR1268ICC1000



#45 AR-1268-5

R.T.: 8.399 min
 Delta R.T.: 0.002 min
 Response: 736492551
 Conc: 983.57 ng/ml