

Data Path : Z:\pestpcbsrv\HPCHEM1\ECD\_0\Data\P0070825\  
 Data File : P0112112.D  
 Signal(s) : Signal #1: ECD1A.ch Signal #2: ECD2B.ch  
 Acq On : 08 Jul 2025 21:22  
 Operator : YP/AJ  
 Sample : AR1268ICC750  
 Misc :  
 ALS Vial : 27 Sample Multiplier: 1

**Instrument :**  
 ECD\_0  
**ClientSampleId :**  
 AR1268ICC750

Integration File signal 1: autoint1.e  
 Integration File signal 2: autoint2.e  
 Quant Time: Jul 09 03:42:05 2025  
 Quant Method : Z:\pestpcbsrv\HPCHEM1\ECD\_0\methods\P0070825.M  
 Quant Title : GC EXTRACTABLES  
 QLast Update : Wed Jul 09 03:33:24 2025  
 Response via : Initial Calibration  
 Integrator: ChemStation

Volume Inj. : 2 µl  
 Signal #1 Phase : ZB-MR1 Signal #2 Phase: ZB-MR2  
 Signal #1 Info : 30Mx0.32mmx 0.50µ Signal #2 Info : 30M x 0.32mm x 0.25µm

Compound	RT#1	RT#2	Resp#1	Resp#2	ng/ml	ng/ml
-----						
System Monitoring Compounds						
1) SA Tetrachlo...	3.672	3.666	822.0E6	512.2E6	76.722	75.743
2) SA Decachlor...	8.700	8.649	1050.8E6	242.3E6	75.975	74.472
Target Compounds						
41) L9 AR-1268-1	7.591	7.553	1471.3E6	372.2E6	761.010	745.185
42) L9 AR-1268-2	7.656	7.618	1239.2E6	317.2E6	762.647	746.065
43) L9 AR-1268-3	7.861	7.823	1019.5E6	238.5E6	754.122	739.688
44) L9 AR-1268-4	8.150	8.110	374.5E6	85695746	728.612	741.374
45) L9 AR-1268-5	8.444	8.399	2621.5E6	562.6E6	761.236	751.350
-----						

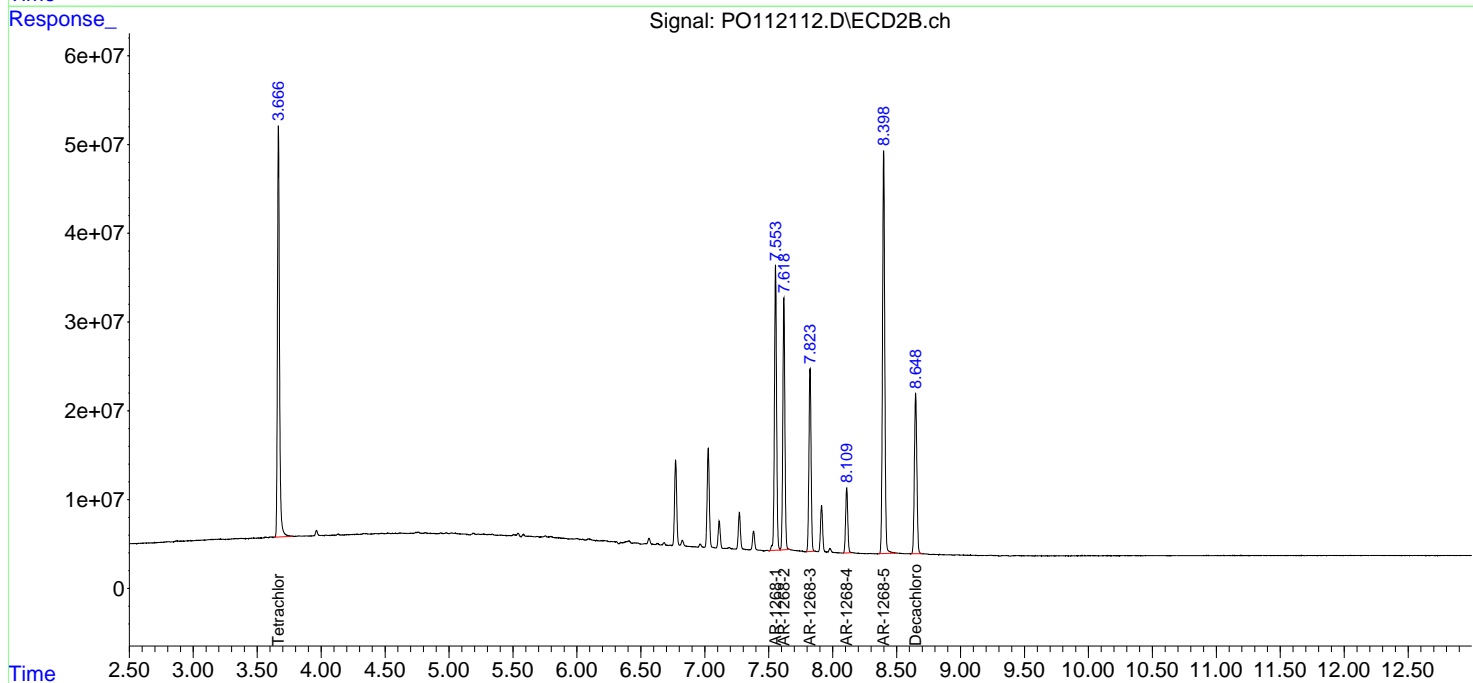
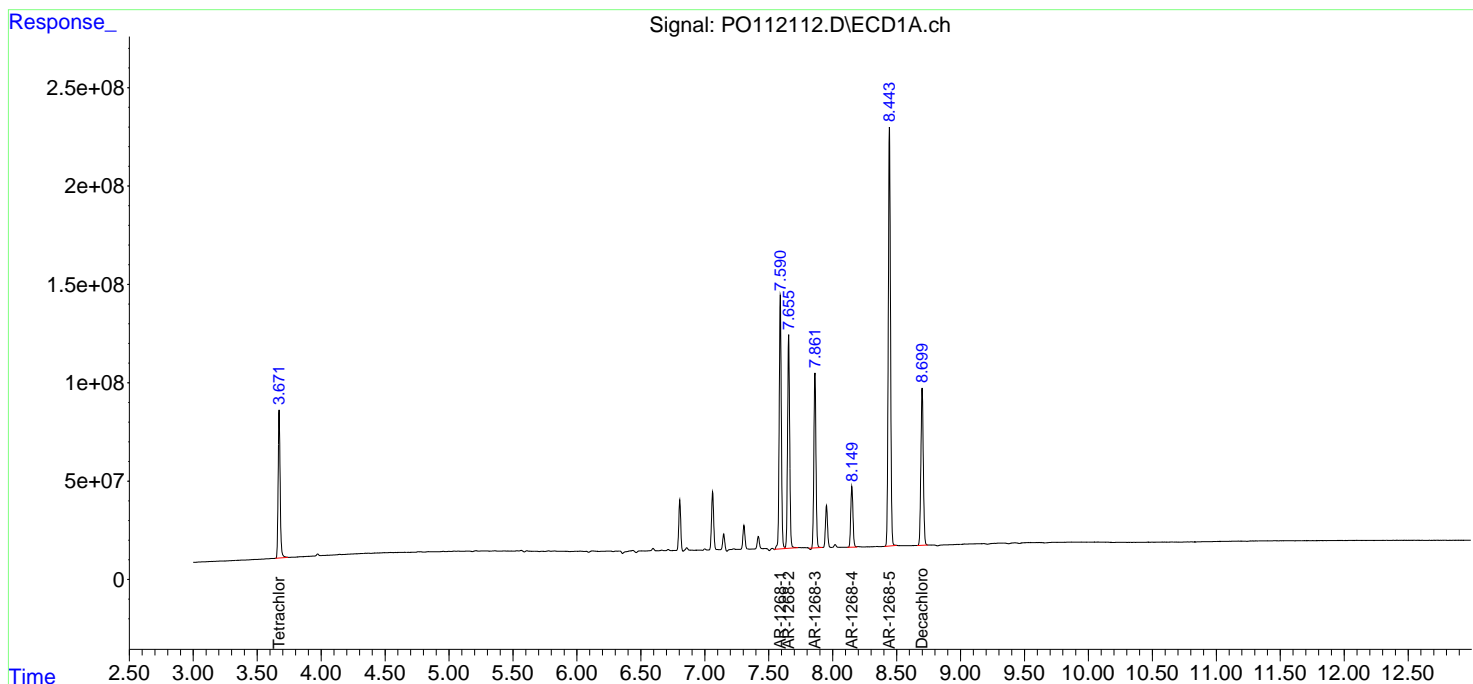
(f)=RT Delta > 1/2 Window (#)=Amounts differ by > 25% (m)=manual int.

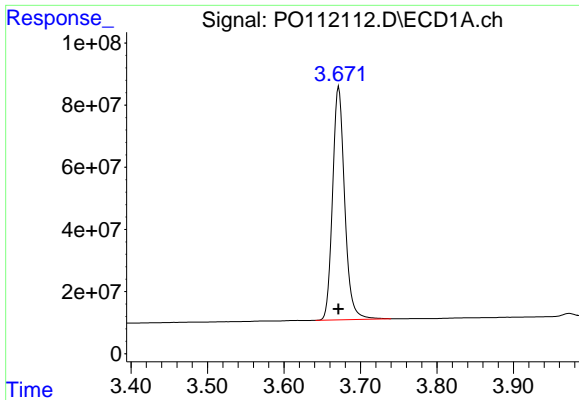
Data Path : Z:\pestpcbsrv\HPCHEM1\ECD\_O\Data\P0070825\  
 Data File : P0112112.D  
 Signal(s) : Signal #1: ECD1A.ch Signal #2: ECD2B.ch  
 Acq On : 08 Jul 2025 21:22  
 Operator : YP/AJ  
 Sample : AR1268ICC750  
 Misc :  
 ALS Vial : 27 Sample Multiplier: 1

Instrument :  
 ECD\_O  
 ClientSampleId :  
 AR1268ICC750

Integration File signal 1: autoint1.e  
 Integration File signal 2: autoint2.e  
 Quant Time: Jul 09 03:42:05 2025  
 Quant Method : Z:\pestpcbsrv\HPCHEM1\ECD\_O\methods\P0070825.M  
 Quant Title : GC EXTRACTABLES  
 QLast Update : Wed Jul 09 03:33:24 2025  
 Response via : Initial Calibration  
 Integrator: ChemStation

Volume Inj. : 2 µl  
 Signal #1 Phase : ZB-MR1 Signal #2 Phase: ZB-MR2  
 Signal #1 Info : 30Mx0.32mmx 0.50µ Signal #2 Info : 30M x 0.32mm x 0.25µm

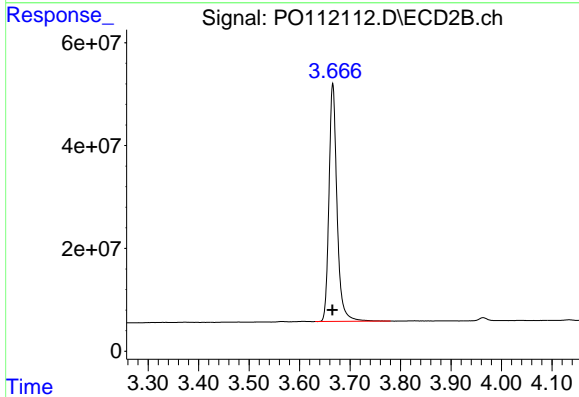




#1 Tetrachloro-m-xylene

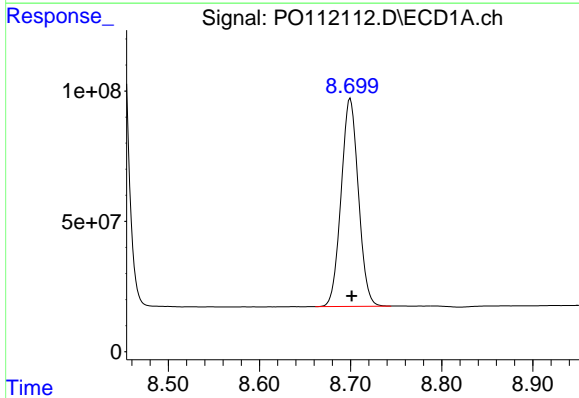
R.T.: 3.672 min  
 Delta R.T.: 0.000 min  
 Response: 822012649  
 Conc: 76.72 ng/ml

Instrument :  
 ECD\_O  
 ClientSampleId :  
 AR1268ICC750



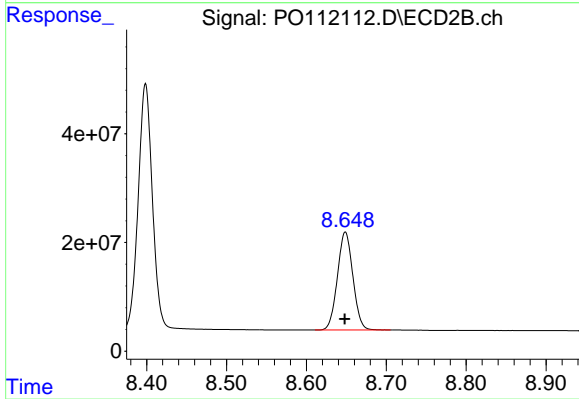
#1 Tetrachloro-m-xylene

R.T.: 3.666 min  
 Delta R.T.: 0.000 min  
 Response: 512184009  
 Conc: 75.74 ng/ml



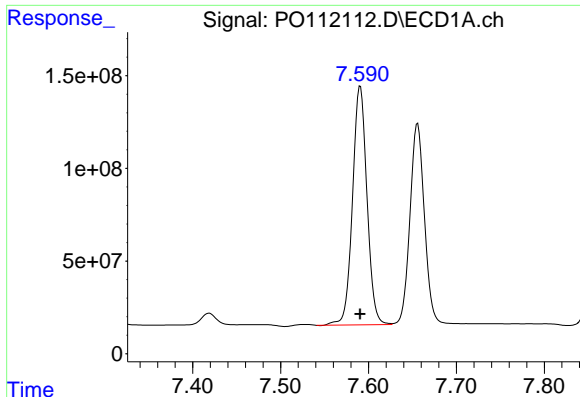
#2 Decachlorobiphenyl

R.T.: 8.700 min  
 Delta R.T.: -0.001 min  
 Response: 1050822148  
 Conc: 75.97 ng/ml



#2 Decachlorobiphenyl

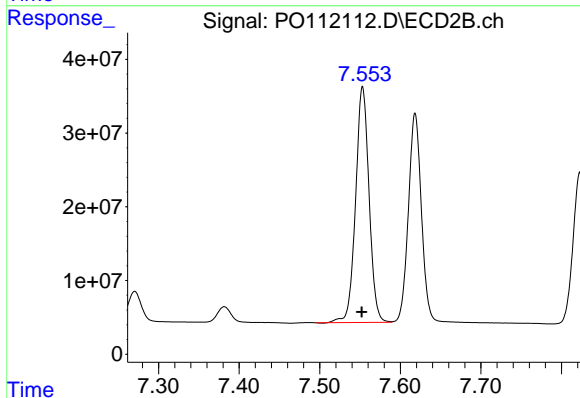
R.T.: 8.649 min  
 Delta R.T.: 0.000 min  
 Response: 242314616  
 Conc: 74.47 ng/ml



#41 AR-1268-1

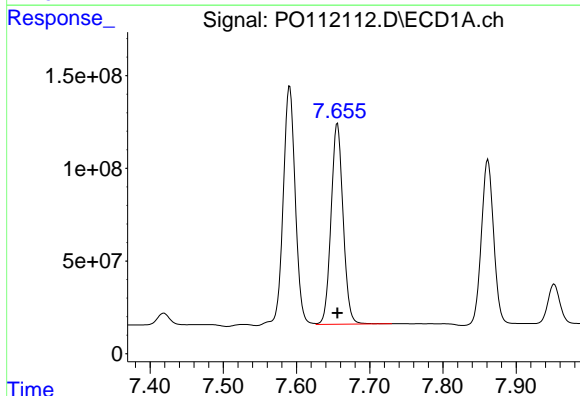
R.T.: 7.591 min  
 Delta R.T.: 0.000 min  
 Response: 1471286032  
 Conc: 761.01 ng/ml

Instrument :  
 ECD\_O  
 ClientSampleId :  
 AR1268ICC750



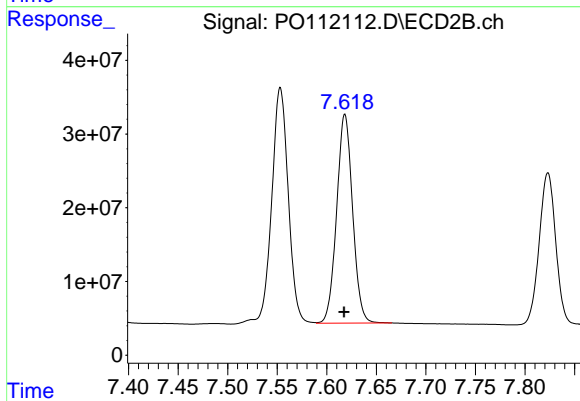
#41 AR-1268-1

R.T.: 7.553 min  
 Delta R.T.: 0.001 min  
 Response: 372212901  
 Conc: 745.18 ng/ml



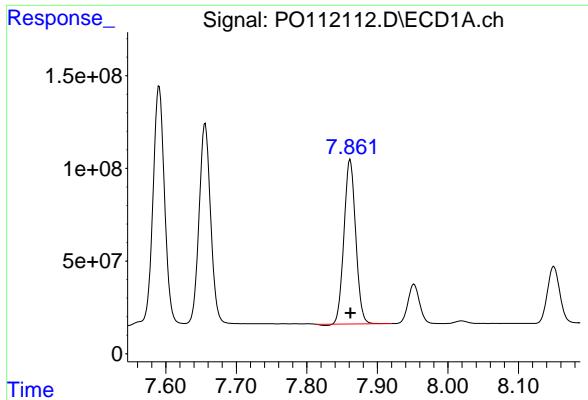
#42 AR-1268-2

R.T.: 7.656 min  
 Delta R.T.: 0.000 min  
 Response: 1239212669  
 Conc: 762.65 ng/ml



#42 AR-1268-2

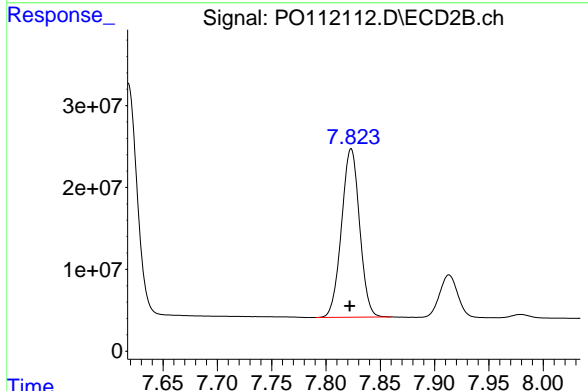
R.T.: 7.618 min  
 Delta R.T.: 0.000 min  
 Response: 317176067  
 Conc: 746.06 ng/ml



#43 AR-1268-3

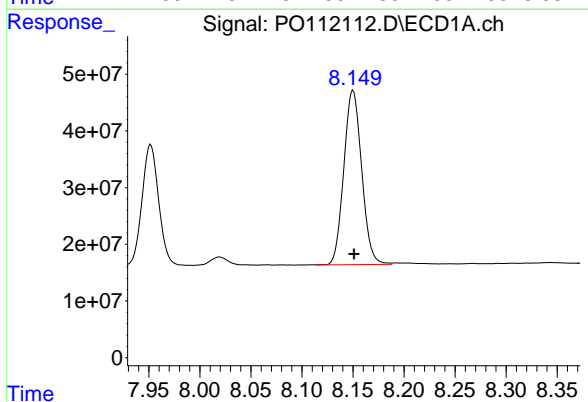
R.T.: 7.861 min  
 Delta R.T.: 0.000 min  
 Response: 1019493923  
 Conc: 754.12 ng/ml

Instrument :  
 ECD\_O  
 ClientSampleId :  
 AR1268ICC750



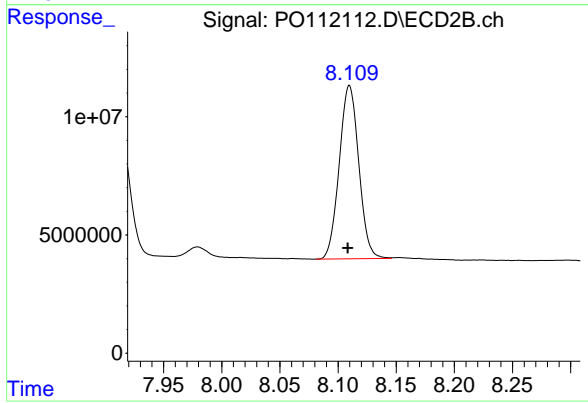
#43 AR-1268-3

R.T.: 7.823 min  
 Delta R.T.: 0.001 min  
 Response: 238453171  
 Conc: 739.69 ng/ml



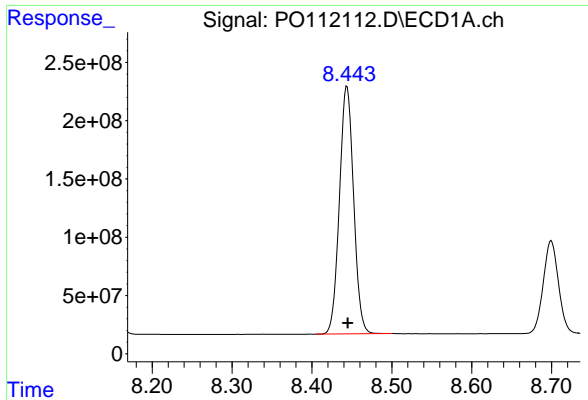
#44 AR-1268-4

R.T.: 8.150 min  
 Delta R.T.: -0.001 min  
 Response: 374536426  
 Conc: 728.61 ng/ml



#44 AR-1268-4

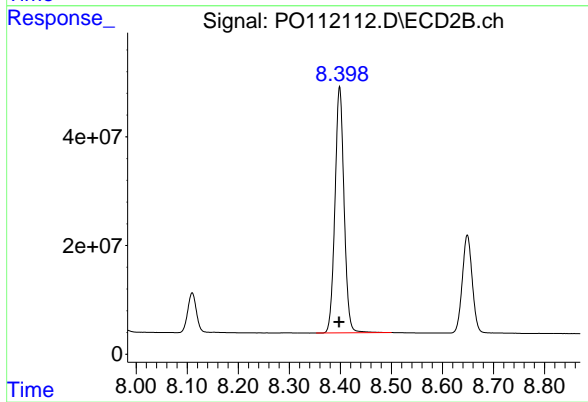
R.T.: 8.110 min  
 Delta R.T.: 0.002 min  
 Response: 85695746  
 Conc: 741.37 ng/ml



#45 AR-1268-5

R.T.: 8.444 min  
Delta R.T.: 0.000 min  
Response: 2621514587  
Conc: 761.24 ng/ml

Instrument :  
ECD\_O  
ClientSampleId :  
AR1268ICC750



#45 AR-1268-5

R.T.: 8.399 min  
Delta R.T.: 0.000 min  
Response: 562609528  
Conc: 751.35 ng/ml