

Data Path : Z:\pestpcbsrv\HPCHEM1\ECD\_0\Data\P0070825\  
 Data File : P0112113.D  
 Signal(s) : Signal #1: ECD1A.ch Signal #2: ECD2B.ch  
 Acq On : 08 Jul 2025 21:39  
 Operator : YP/AJ  
 Sample : AR1268ICC500  
 Misc :  
 ALS Vial : 28 Sample Multiplier: 1

**Instrument :**  
 ECD\_0  
**ClientSampleId :**  
 AR1268ICC500

Integration File signal 1: autoint1.e  
 Integration File signal 2: autoint2.e  
 Quant Time: Jul 09 03:42:15 2025  
 Quant Method : Z:\pestpcbsrv\HPCHEM1\ECD\_0\methods\P0070825.M  
 Quant Title : GC EXTRACTABLES  
 QLast Update : Wed Jul 09 03:33:24 2025  
 Response via : Initial Calibration  
 Integrator: ChemStation

Volume Inj. : 2 µl  
 Signal #1 Phase : ZB-MR1 Signal #2 Phase: ZB-MR2  
 Signal #1 Info : 30Mx0.32mmx 0.50µ Signal #2 Info : 30M x 0.32mm x 0.25µm

Compound	RT#1	RT#2	Resp#1	Resp#2	ng/ml	ng/ml
-----						
System Monitoring Compounds						
1) SA Tetrachlo...	3.671	3.666	535.7E6	338.1E6	50.000	50.000
2) SA Decachlor...	8.701	8.648	691.6E6	162.7E6	50.000	50.000
Target Compounds						
41) L9 AR-1268-1	7.590	7.552	966.7E6	249.7E6	500.000	500.000
42) L9 AR-1268-2	7.656	7.617	812.4E6	212.6E6	500.000	500.000
43) L9 AR-1268-3	7.862	7.822	675.9E6	161.2E6	500.000	500.000
44) L9 AR-1268-4	8.151	8.108	257.0E6	57795189	500.000	500.000
45) L9 AR-1268-5	8.445	8.398	1721.9E6	374.4E6	500.000	500.000
-----						

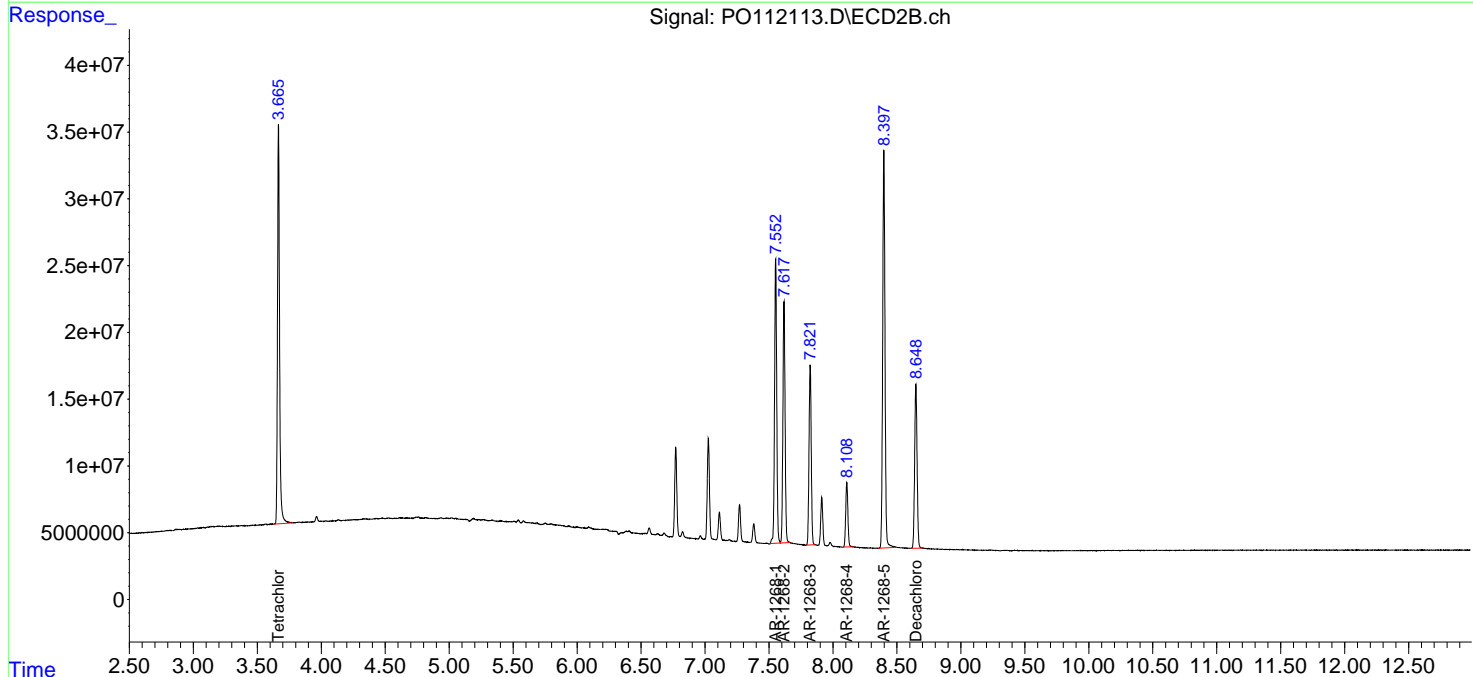
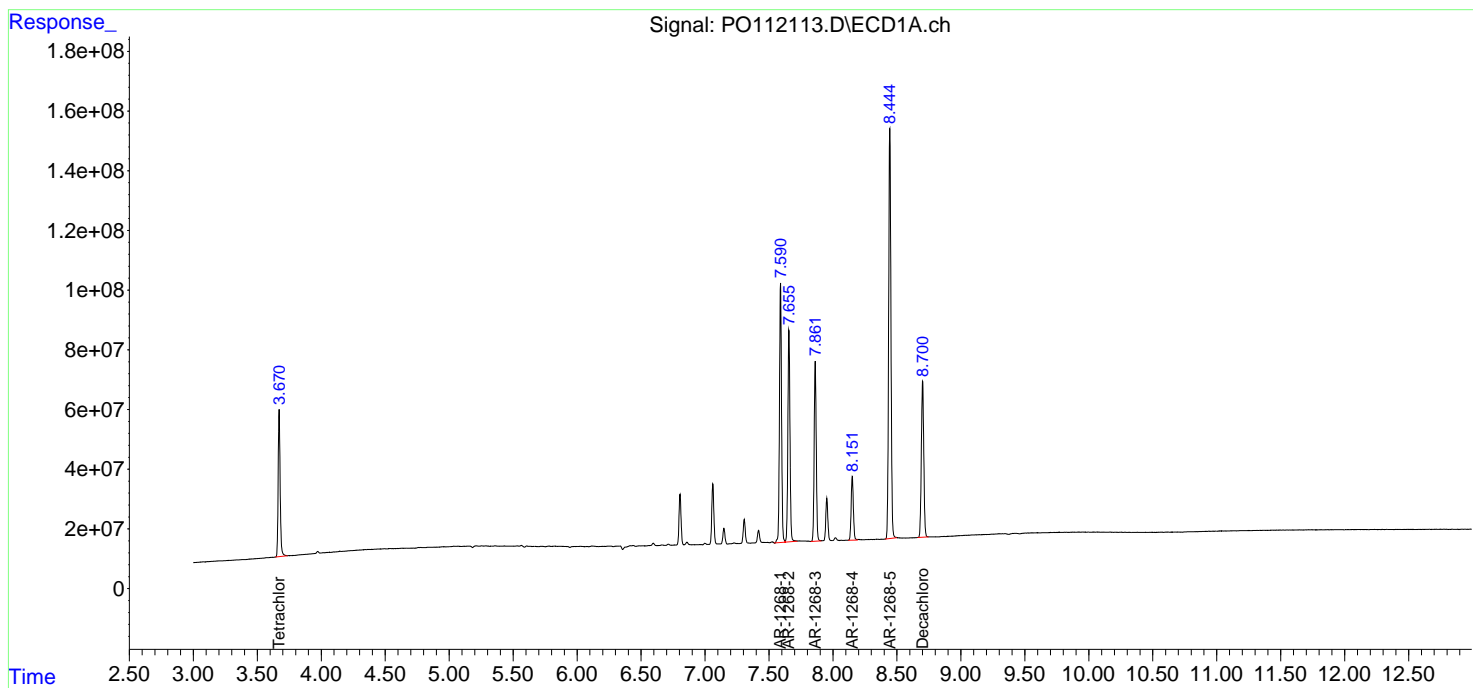
(f)=RT Delta > 1/2 Window (#)=Amounts differ by > 25% (m)=manual int.

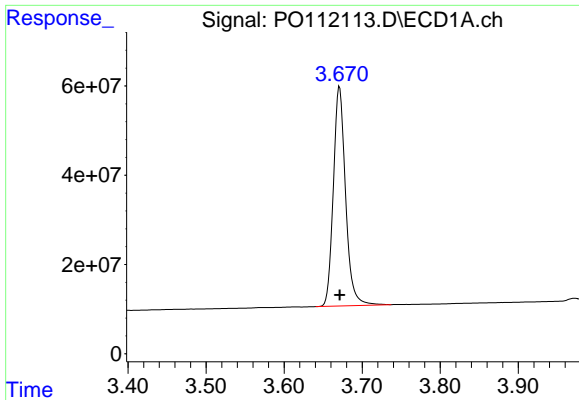
Data Path : Z:\pestpcbsrv\HPCHEM1\ECD\_O\Data\P0070825\  
 Data File : P0112113.D  
 Signal(s) : Signal #1: ECD1A.ch Signal #2: ECD2B.ch  
 Acq On : 08 Jul 2025 21:39  
 Operator : YP/AJ  
 Sample : AR1268ICC500  
 Misc :  
 ALS Vial : 28 Sample Multiplier: 1

Instrument :  
 ECD\_O  
 ClientSampleId :  
 AR1268ICC500

Integration File signal 1: autoint1.e  
 Integration File signal 2: autoint2.e  
 Quant Time: Jul 09 03:42:15 2025  
 Quant Method : Z:\pestpcbsrv\HPCHEM1\ECD\_O\methods\P0070825.M  
 Quant Title : GC EXTRACTABLES  
 QLast Update : Wed Jul 09 03:33:24 2025  
 Response via : Initial Calibration  
 Integrator: ChemStation

Volume Inj. : 2 µl  
 Signal #1 Phase : ZB-MR1 Signal #2 Phase: ZB-MR2  
 Signal #1 Info : 30Mx0.32mmx 0.50µ Signal #2 Info : 30M x 0.32mm x 0.25µm

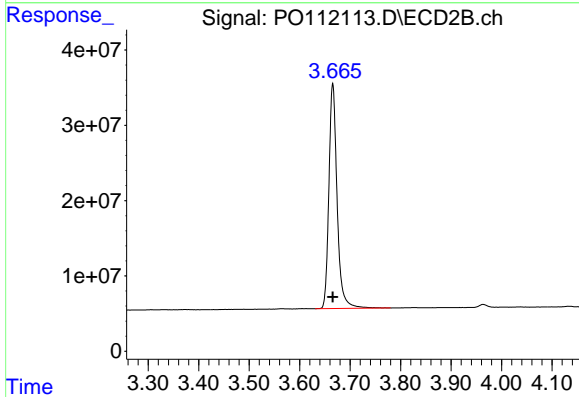




#1 Tetrachloro-m-xylene

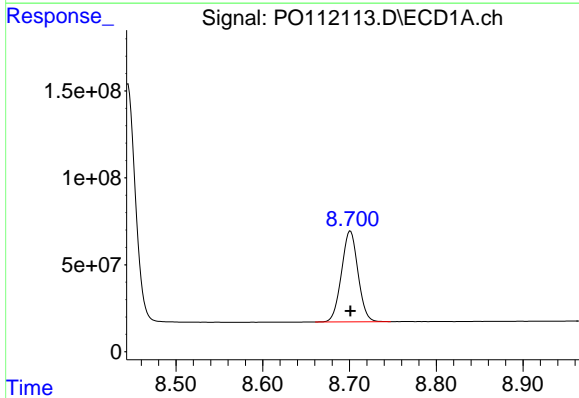
R.T.: 3.671 min  
 Delta R.T.: 0.000 min  
 Response: 535710880  
 Conc: 50.00 ng/ml

Instrument :  
 ECD\_O  
 ClientSampleId :  
 AR1268ICC500



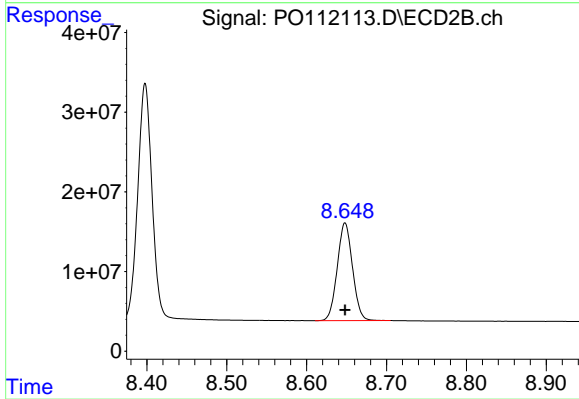
#1 Tetrachloro-m-xylene

R.T.: 3.666 min  
 Delta R.T.: 0.000 min  
 Response: 338108720  
 Conc: 50.00 ng/ml



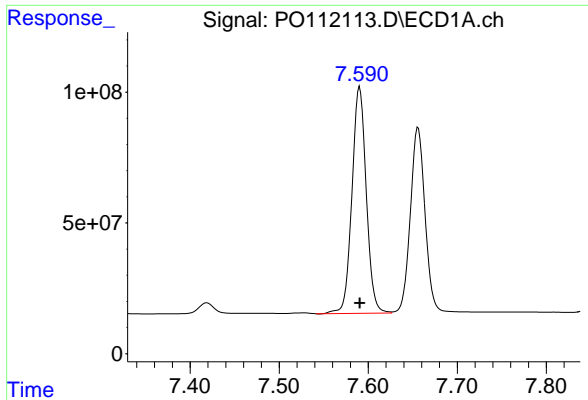
#2 Decachlorobiphenyl

R.T.: 8.701 min  
 Delta R.T.: 0.000 min  
 Response: 691560412  
 Conc: 50.00 ng/ml



#2 Decachlorobiphenyl

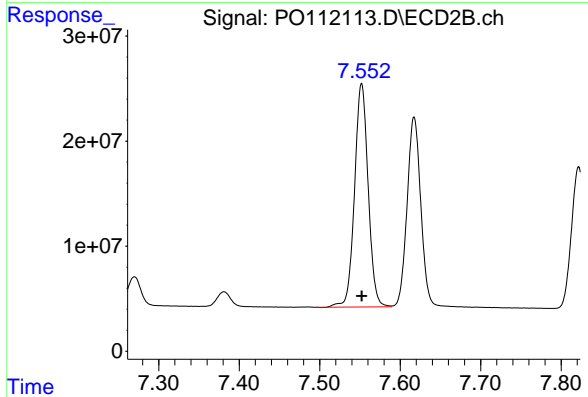
R.T.: 8.648 min  
 Delta R.T.: 0.000 min  
 Response: 162688721  
 Conc: 50.00 ng/ml



#41 AR-1268-1

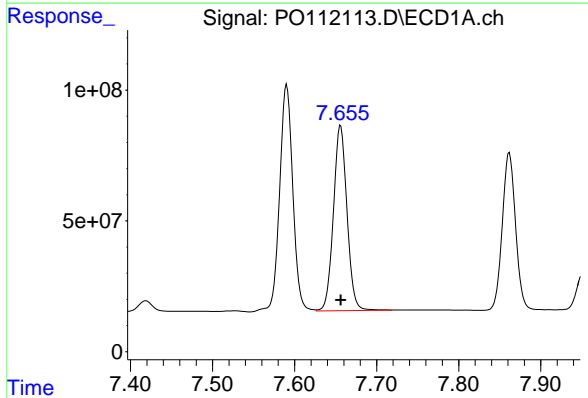
R.T.: 7.590 min  
 Delta R.T.: 0.000 min  
 Response: 966666591  
 Conc: 500.00 ng/ml

Instrument :  
 ECD\_O  
 ClientSampleId :  
 AR1268ICC500



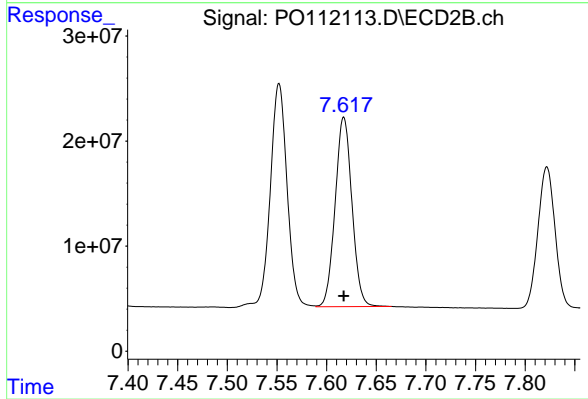
#41 AR-1268-1

R.T.: 7.552 min  
 Delta R.T.: 0.000 min  
 Response: 249745315  
 Conc: 500.00 ng/ml



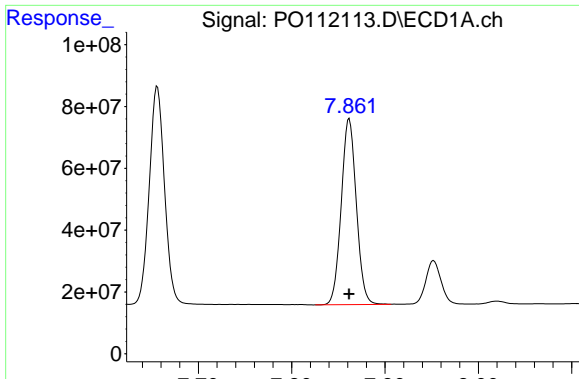
#42 AR-1268-2

R.T.: 7.656 min  
 Delta R.T.: 0.000 min  
 Response: 812441643  
 Conc: 500.00 ng/ml



#42 AR-1268-2

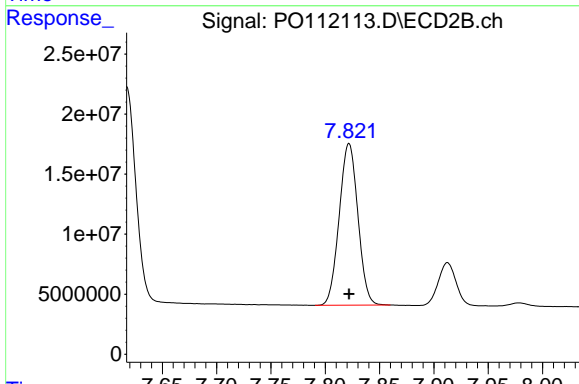
R.T.: 7.617 min  
 Delta R.T.: 0.000 min  
 Response: 212566069  
 Conc: 500.00 ng/ml



#43 AR-1268-3

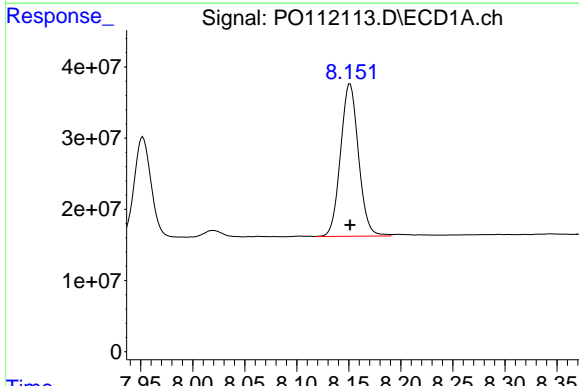
R.T.: 7.862 min  
 Delta R.T.: 0.000 min  
 Response: 675947461  
 Conc: 500.00 ng/ml

Instrument :  
 ECD\_O  
 ClientSampleId :  
 AR1268ICC500



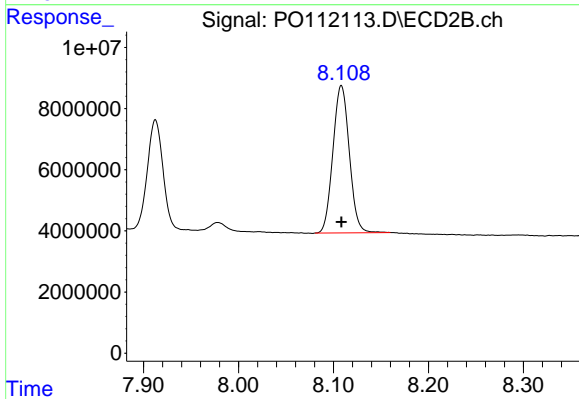
#43 AR-1268-3

R.T.: 7.822 min  
 Delta R.T.: 0.000 min  
 Response: 161185006  
 Conc: 500.00 ng/ml



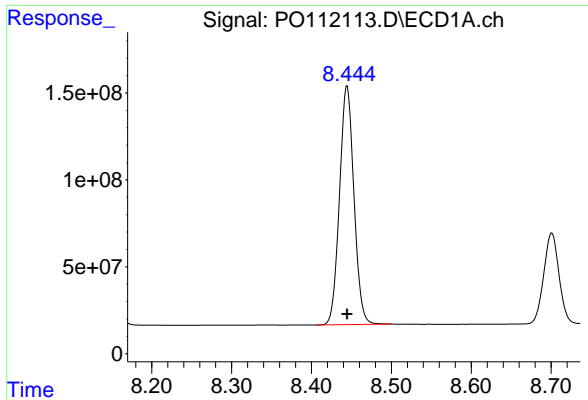
#44 AR-1268-4

R.T.: 8.151 min  
 Delta R.T.: 0.000 min  
 Response: 257020392  
 Conc: 500.00 ng/ml



#44 AR-1268-4

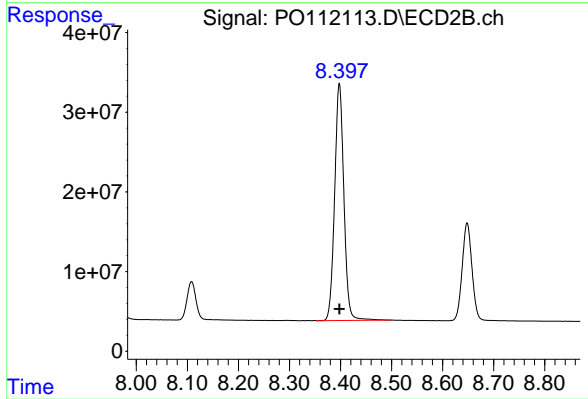
R.T.: 8.108 min  
 Delta R.T.: 0.000 min  
 Response: 57795189  
 Conc: 500.00 ng/ml



#45 AR-1268-5

R.T.: 8.445 min  
 Delta R.T.: 0.000 min  
 Response: 1721880535  
 Conc: 500.00 ng/ml

Instrument :  
 ECD\_O  
 ClientSampleId :  
 AR1268ICC500



#45 AR-1268-5

R.T.: 8.398 min  
 Delta R.T.: 0.000 min  
 Response: 374399232  
 Conc: 500.00 ng/ml