

Data Path : Z:\pestpcbsrv\HPCHEM1\ECD\_0\Data\P0070825\  
 Data File : PO112116.D  
 Signal(s) : Signal #1: ECD1A.ch Signal #2: ECD2B.ch  
 Acq On : 08 Jul 2025 22:34  
 Operator : YP/AJ  
 Sample : P0070825ICV500  
 Misc :  
 ALS Vial : 31 Sample Multiplier: 1

Instrument :  
 ECD\_0  
 ClientSampleId :  
 ICVPO070825

Integration File signal 1: autoint1.e  
 Integration File signal 2: autoint2.e  
 Quant Time: Jul 09 04:04:41 2025  
 Quant Method : Z:\pestpcbsrv\HPCHEM1\ECD\_0\methods\P0070825.M  
 Quant Title : GC EXTRACTABLES  
 QLast Update : Wed Jul 09 04:02:23 2025  
 Response via : Initial Calibration  
 Integrator: ChemStation

Volume Inj. : 2 µl  
 Signal #1 Phase : ZB-MR1 Signal #2 Phase: ZB-MR2  
 Signal #1 Info : 30Mx0.32mmx 0.50µ Signal #2 Info : 30M x 0.32mm x 0.25µm

Compound	RT#1	RT#2	Resp#1	Resp#2	ng/ml	ng/ml
System Monitoring Compounds						
1) SA Tetrachlo...	3.672	3.666	521.7E6	329.9E6	52.728	51.784
2) SA Decachlor...	8.702	8.649	362.0E6	87909411	52.944	51.007
Target Compounds						
3) L1 AR-1016-1	4.760	4.761	175.3E6	164.0E6	515.284	736.075 #
4) L1 AR-1016-2	4.779	4.792	259.8E6	11895525	522.388	36.146 #
5) L1 AR-1016-3	4.836	4.936	165.0E6	85046592	509.600	500.666
6) L1 AR-1016-4	4.956	4.979	132.8E6	68299058	517.300	497.707
7) L1 AR-1016-5	5.213	5.190	137.8E6	89116759	503.683	516.768
8) L2 AR-1221-1	3.883	3.873	15947935	11246969	136.758	136.666
9) L2 AR-1221-2	3.971	3.961	21794231	16662019	276.434	280.725
10) L2 AR-1221-3	4.046	4.036	87428058	61302785	324.310	324.737
11) L3 AR-1232-1	4.046	4.036	87428058	61302785	407.272	408.415
12) L3 AR-1232-2	4.539	4.761	132.6E6	164.0E6	1166.980	1071.444
13) L3 AR-1232-3	4.779	4.936	259.8E6	85046592	1134.364	1126.355
14) L3 AR-1232-4	4.956	5.020	132.8E6	81017586	1162.259	1227.759
15) L3 AR-1232-5	4.998	5.190	102.3E6	89116759	1393.978	1200.065
16) L4 AR-1242-1	4.760	4.742	175.3E6	109.9E6	605.102	566.708
17) L4 AR-1242-2	4.779	4.761	259.8E6	164.0E6	609.926	578.865
18) L4 AR-1242-3	4.836	4.936	165.0E6	85046592	602.752	583.801
19) L4 AR-1242-4	4.956	5.020	132.8E6	81017586	589.577	571.187
20) L4 AR-1242-5	5.607	5.540	29284624	86955161	138.350	478.475 #
21) L5 AR-1248-1	4.760	4.742	175.3E6	109.9E6	772.411	711.683
22) L5 AR-1248-2	4.998	4.979	102.3E6	68299058	331.852	331.923
23) L5 AR-1248-3	5.213	5.020	137.8E6	81017586	338.404	377.180
24) L5 AR-1248-4	5.566	5.190	135.0E6	89116759	233.845	344.444 #
25) L5 AR-1248-5	5.607	5.581	29284624	22496977	75.030	89.791
26) L6 AR-1254-1	5.566	5.540	135.0E6	86955161	219.411	228.128
27) L6 AR-1254-2	5.715	5.688	90019733	62065631	168.046	187.051
28) L6 AR-1254-3	6.135	6.105	227.7E6	108.7E6	271.151	225.457
29) L6 AR-1254-4	6.347	6.316	25832693	12233696	53.704	46.927
30) L6 AR-1254-5	6.767	6.732	353.7E6	156.0E6	456.992	437.848
31) L7 AR-1260-1	6.250	6.220	257.1E6	138.6E6	512.929	493.882
32) L7 AR-1260-2	6.440	6.408	380.3E6	165.9E6	515.168	487.864
33) L7 AR-1260-3	6.806	6.559	331.7E6	128.1E6	506.110	464.787
34) L7 AR-1260-4	7.065	7.065	235.9E6	12589968	541.983	62.747 #
35) L7 AR-1260-5	7.308	7.271	694.1E6	218.4E6	549.787	487.907
36) L8 AR-1262-1	6.806	6.771	331.7E6	137.5E6	324.704	337.557
37) L8 AR-1262-2	7.308	7.271	694.1E6	218.4E6	423.410	426.203
38) L8 AR-1262-3	7.592	7.552	161.8E6	44636216	252.033	248.636
39) L8 AR-1262-4	7.655	7.616	445.6E6	119.2E6	415.901	409.608
40) L8 AR-1262-5	8.153	8.109	146.1E6	33885824	325.982	320.332
41) L9 AR-1268-1	7.592	7.552	161.8E6	44636216	88.056	90.825

Data Path : Z:\pestpcbsrv\HPCHEM1\ECD\_0\Data\P0070825\  
 Data File : P0112116.D  
 Signal(s) : Signal #1: ECD1A.ch Signal #2: ECD2B.ch  
 Acq On : 08 Jul 2025 22:34  
 Operator : YP/AJ  
 Sample : P0070825ICV500  
 Misc :  
 ALS Vial : 31 Sample Multiplier: 1

Instrument :  
 ECD\_0  
 ClientSampleId :  
 ICVPO070825

Integration File signal 1: autoint1.e  
 Integration File signal 2: autoint2.e  
 Quant Time: Jul 09 04:04:41 2025  
 Quant Method : Z:\pestpcbsrv\HPCHEM1\ECD\_0\methods\P0070825.M  
 Quant Title : GC EXTRACTABLES  
 QLast Update : Wed Jul 09 04:02:23 2025  
 Response via : Initial Calibration  
 Integrator: ChemStation

Volume Inj. : 2 µl  
 Signal #1 Phase : ZB-MR1 Signal #2 Phase: ZB-MR2  
 Signal #1 Info : 30Mx0.32mmx 0.50µ Signal #2 Info : 30M x 0.32mm x 0.25µm

	Compound	RT#1	RT#2	Resp#1	Resp#2	ng/ml	ng/ml
42)	L9 AR-1268-2	7.655	7.616	445.6E6	119.2E6	286.087	285.635
43)	L9 AR-1268-3	7.863	7.821	2769823	2396044	2.131	7.573 #
44)	L9 AR-1268-4	8.153	8.109	146.1E6	33885824	304.087	303.876
45)	L9 AR-1268-5	8.446	8.398	35455171	8565740	10.863	11.790

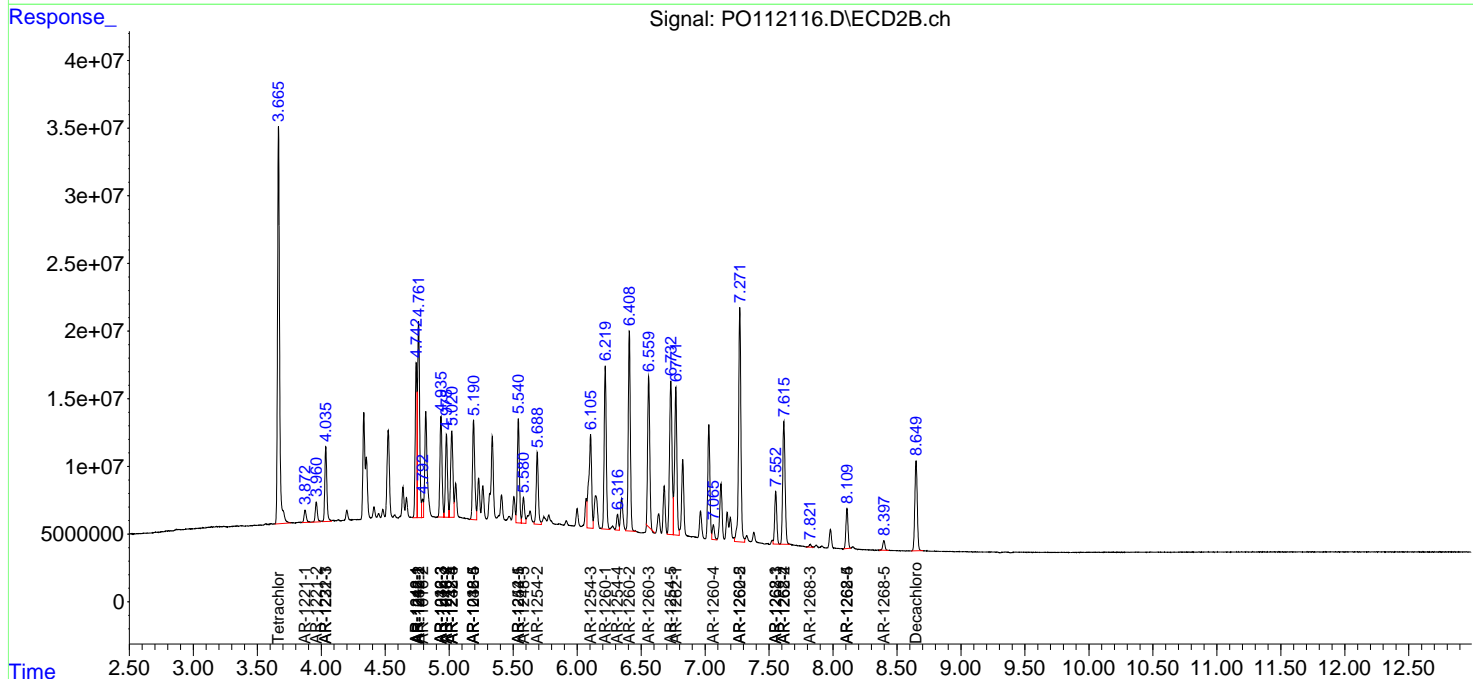
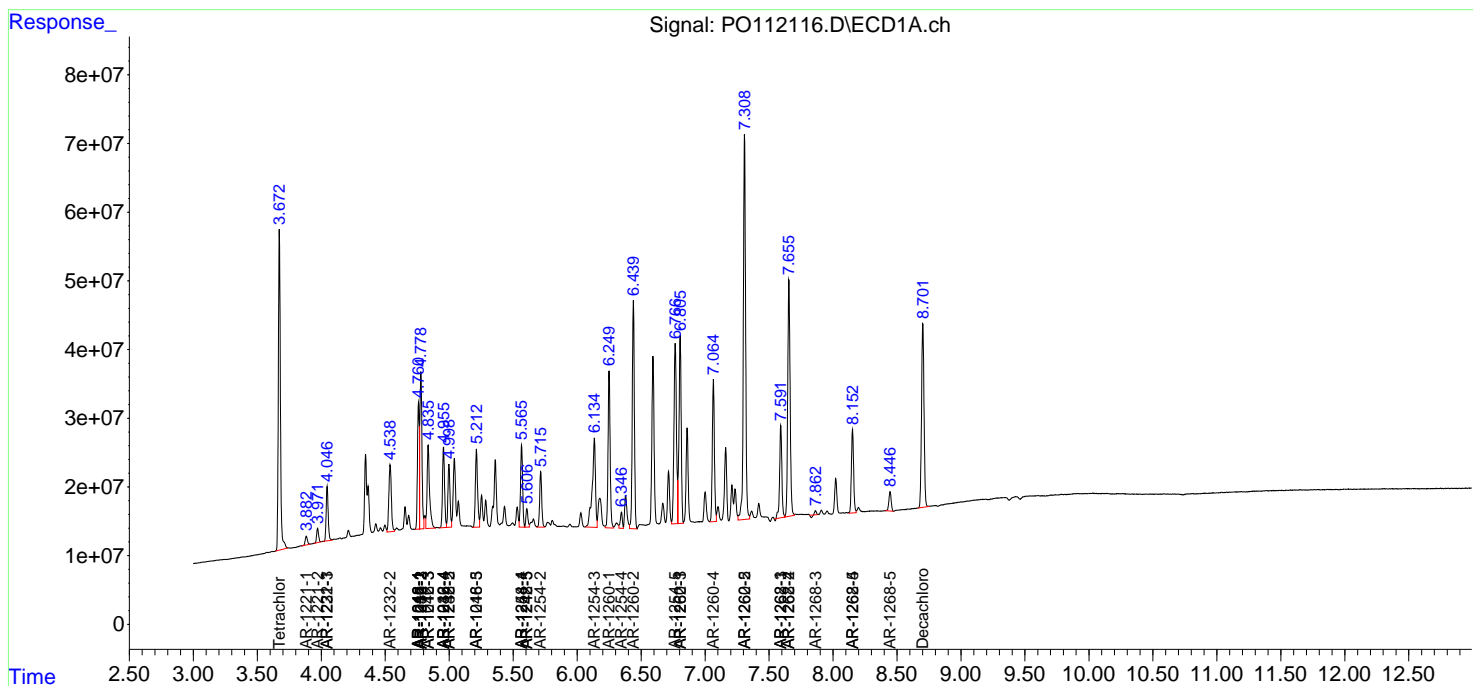
(f)=RT Delta > 1/2 Window (#)=Amounts differ by > 25% (m)=manual int.

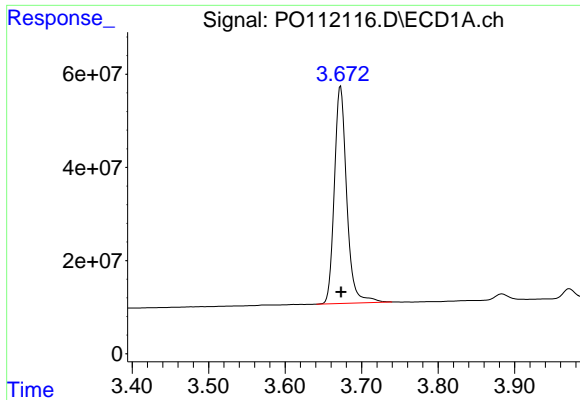
Data Path : Z:\pestpcbsrv\HPCHEM1\ECD\_O\Data\P0070825\  
 Data File : P0112116.D  
 Signal(s) : Signal #1: ECD1A.ch Signal #2: ECD2B.ch  
 Acq On : 08 Jul 2025 22:34  
 Operator : YP/AJ  
 Sample : P0070825ICV500  
 Misc :  
 ALS Vial : 31 Sample Multiplier: 1

Instrument :  
 ECD\_O  
 ClientSampleId :  
 ICVPO070825

Integration File signal 1: autoint1.e  
 Integration File signal 2: autoint2.e  
 Quant Time: Jul 09 04:04:41 2025  
 Quant Method : Z:\pestpcbsrv\HPCHEM1\ECD\_O\methods\P0070825.M  
 Quant Title : GC EXTRACTABLES  
 QLast Update : Wed Jul 09 04:02:23 2025  
 Response via : Initial Calibration  
 Integrator: ChemStation

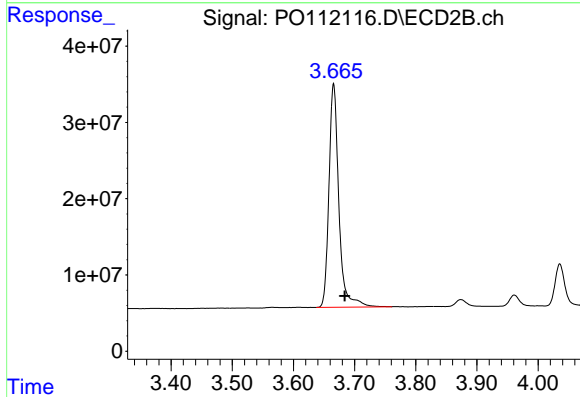
Volume Inj. : 2 µl  
 Signal #1 Phase : ZB-MR1 Signal #2 Phase: ZB-MR2  
 Signal #1 Info : 30Mx0.32mmx 0.50µ Signal #2 Info : 30M x 0.32mm x 0.25µm



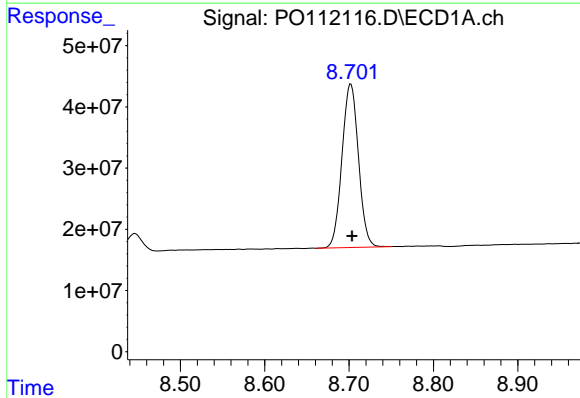


#1 Tetrachloro-m-xylene  
 R.T.: 3.672 min  
 Delta R.T.: 0.000 min  
 Response: 521724349  
 Conc: 52.73 ng/ml

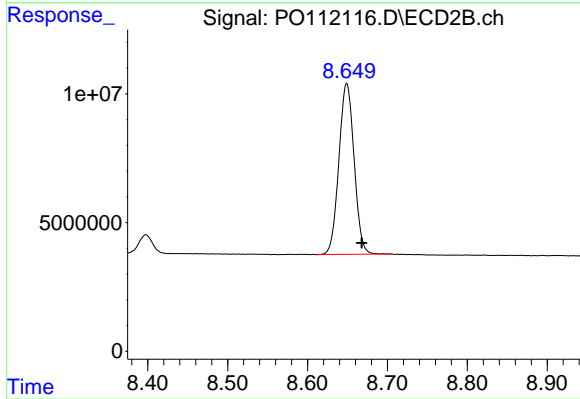
Instrument :  
 ECD\_O  
 ClientSampleId :  
 ICVPO070825



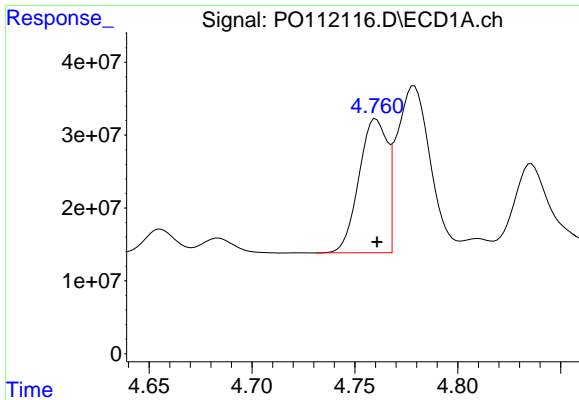
#1 Tetrachloro-m-xylene  
 R.T.: 3.666 min  
 Delta R.T.: -0.018 min  
 Response: 329918340  
 Conc: 51.78 ng/ml



#2 Decachlorobiphenyl  
 R.T.: 8.702 min  
 Delta R.T.: -0.001 min  
 Response: 361977757  
 Conc: 52.94 ng/ml



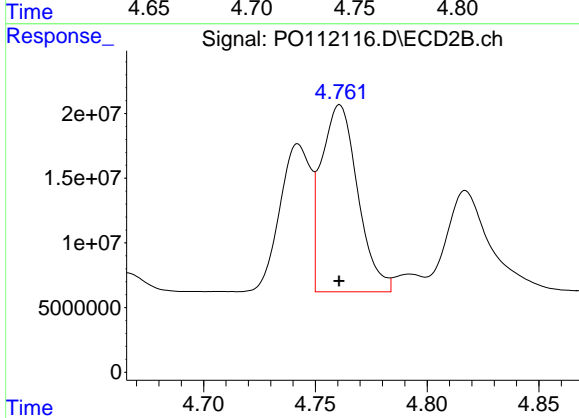
#2 Decachlorobiphenyl  
 R.T.: 8.649 min  
 Delta R.T.: -0.019 min  
 Response: 87909411  
 Conc: 51.01 ng/ml



#3 AR-1016-1

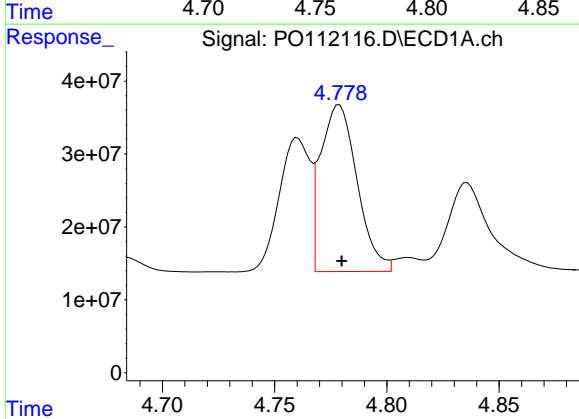
R.T.: 4.760 min  
 Delta R.T.: 0.000 min  
 Response: 175259674  
 Conc: 515.28 ng/ml

Instrument :  
 ECD\_O  
 ClientSampleId :  
 ICVPO070825



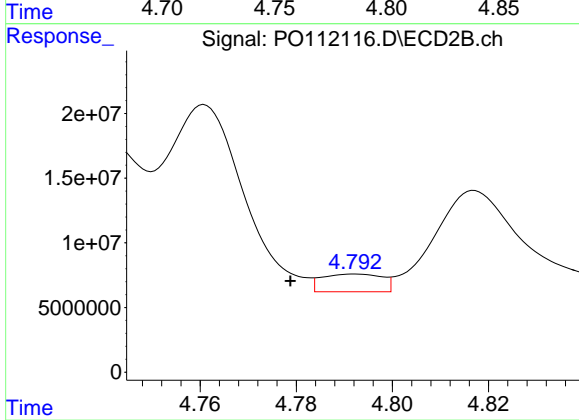
#3 AR-1016-1

R.T.: 4.761 min  
 Delta R.T.: 0.000 min  
 Response: 164022813  
 Conc: 736.07 ng/ml



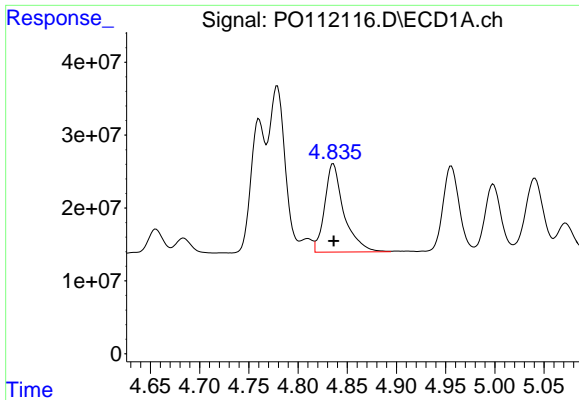
#4 AR-1016-2

R.T.: 4.779 min  
 Delta R.T.: -0.001 min  
 Response: 259779428  
 Conc: 522.39 ng/ml



#4 AR-1016-2

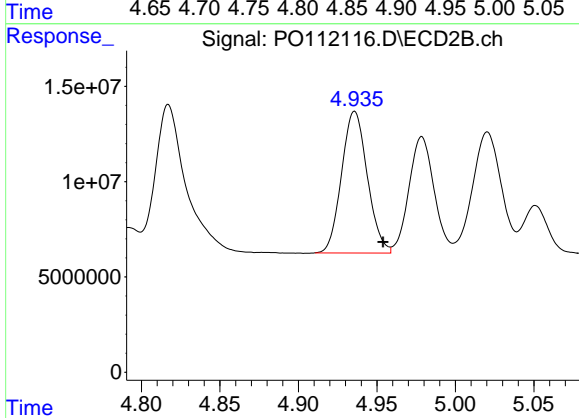
R.T.: 4.792 min  
 Delta R.T.: 0.013 min  
 Response: 11895525  
 Conc: 36.15 ng/ml



#5 AR-1016-3

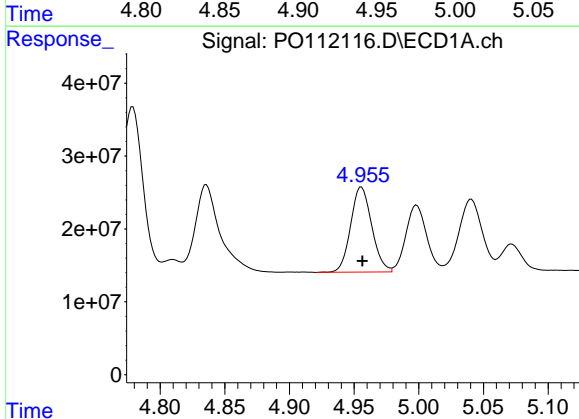
R.T.: 4.836 min  
 Delta R.T.: 0.000 min  
 Response: 164964568  
 Conc: 509.60 ng/ml

Instrument :  
 ECD\_O  
 ClientSampleId :  
 ICVPO070825



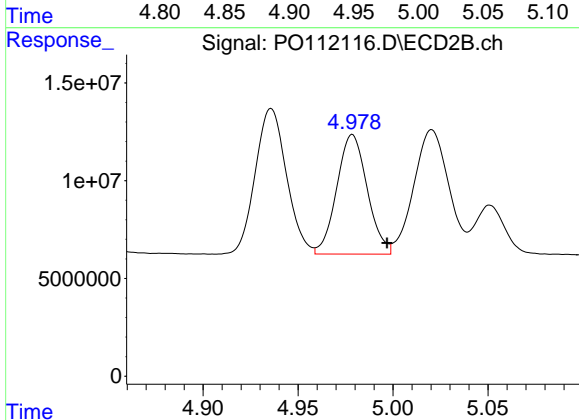
#5 AR-1016-3

R.T.: 4.936 min  
 Delta R.T.: -0.018 min  
 Response: 85046592  
 Conc: 500.67 ng/ml



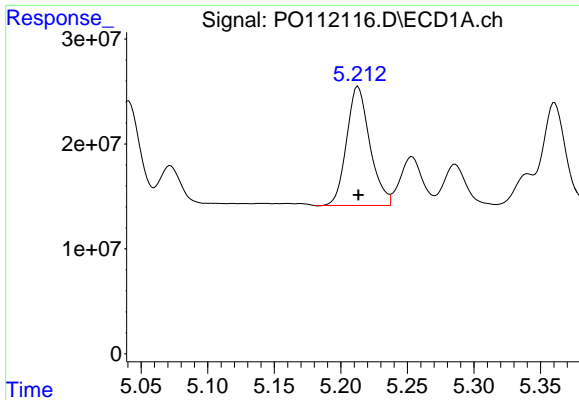
#6 AR-1016-4

R.T.: 4.956 min  
 Delta R.T.: 0.000 min  
 Response: 132842340  
 Conc: 517.30 ng/ml



#6 AR-1016-4

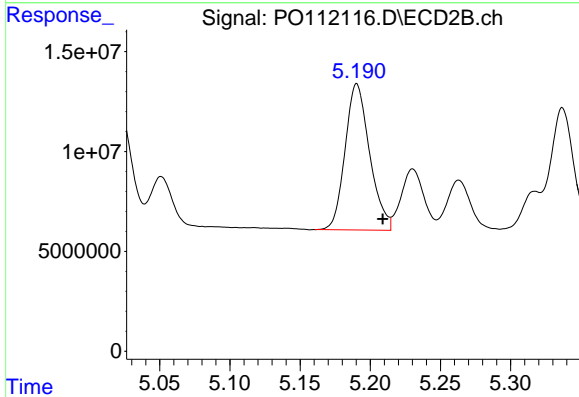
R.T.: 4.979 min  
 Delta R.T.: -0.018 min  
 Response: 68299058  
 Conc: 497.71 ng/ml



#7 AR-1016-5

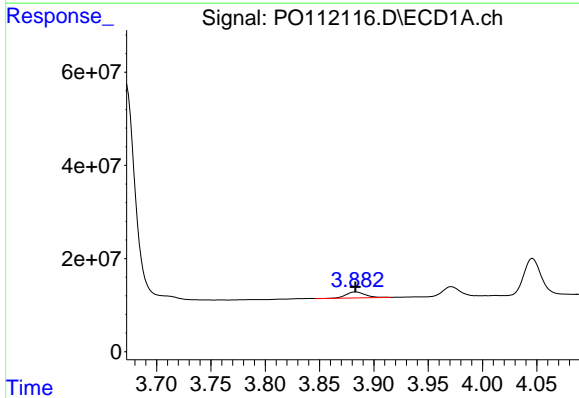
R.T.: 5.213 min  
 Delta R.T.: 0.000 min  
 Response: 137838808  
 Conc: 503.68 ng/ml

Instrument :  
 ECD\_O  
 ClientSampleId :  
 ICVPO070825



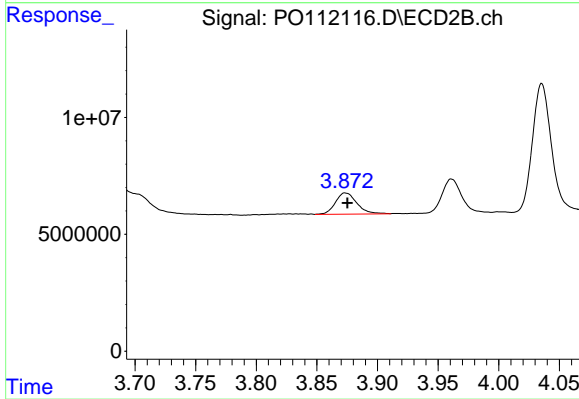
#7 AR-1016-5

R.T.: 5.190 min  
 Delta R.T.: -0.018 min  
 Response: 89116759  
 Conc: 516.77 ng/ml



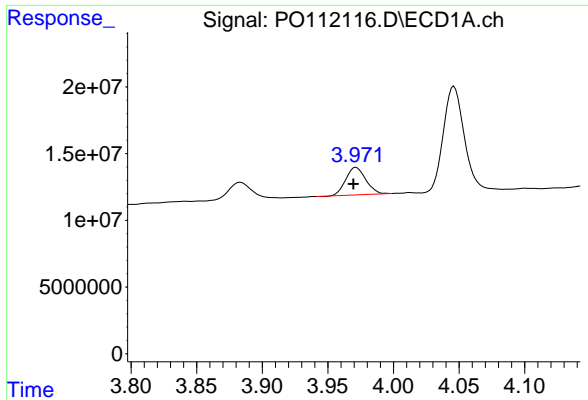
#8 AR-1221-1

R.T.: 3.883 min  
 Delta R.T.: 0.000 min  
 Response: 15947935  
 Conc: 136.76 ng/ml



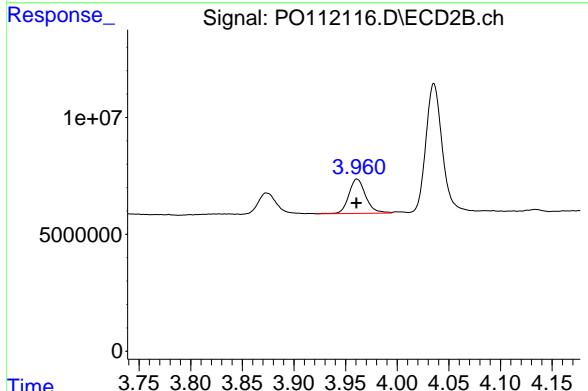
#8 AR-1221-1

R.T.: 3.873 min  
 Delta R.T.: -0.002 min  
 Response: 11246969  
 Conc: 136.67 ng/ml

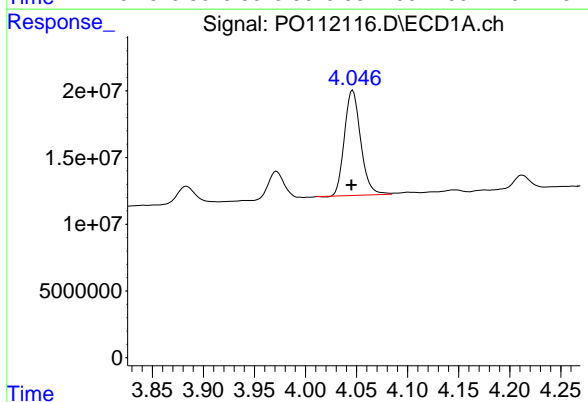


#9 AR-1221-2  
 R.T.: 3.971 min  
 Delta R.T.: 0.002 min  
 Response: 21794231  
 Conc: 276.43 ng/ml

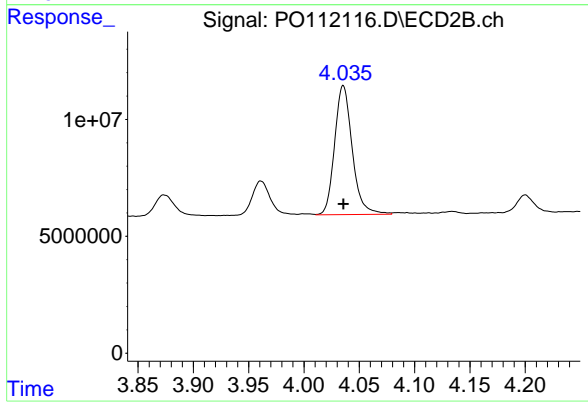
Instrument :  
 ECD\_O  
 ClientSampleId :  
 ICVPO070825



#9 AR-1221-2  
 R.T.: 3.961 min  
 Delta R.T.: 0.000 min  
 Response: 16662019  
 Conc: 280.72 ng/ml

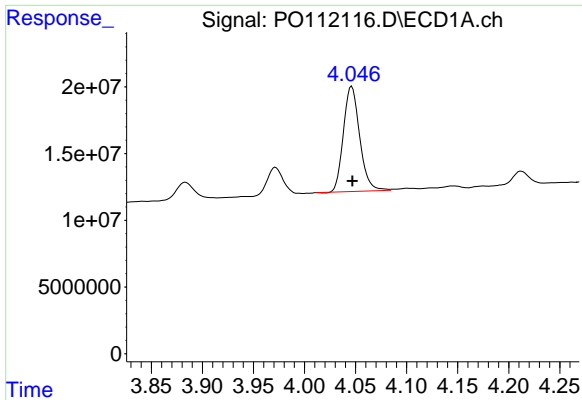


#10 AR-1221-3  
 R.T.: 4.046 min  
 Delta R.T.: 0.001 min  
 Response: 87428058  
 Conc: 324.31 ng/ml



#10 AR-1221-3  
 R.T.: 4.036 min  
 Delta R.T.: 0.000 min  
 Response: 61302785  
 Conc: 324.74 ng/ml

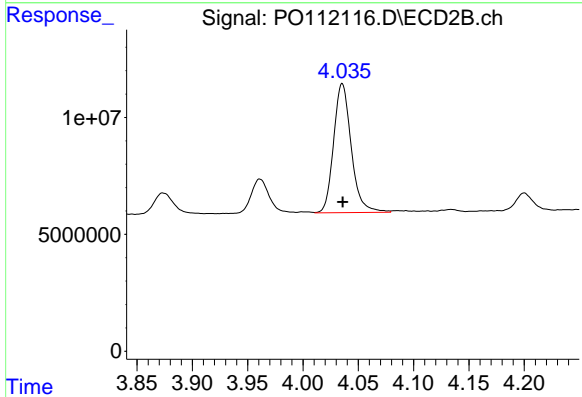




#11 AR-1232-1

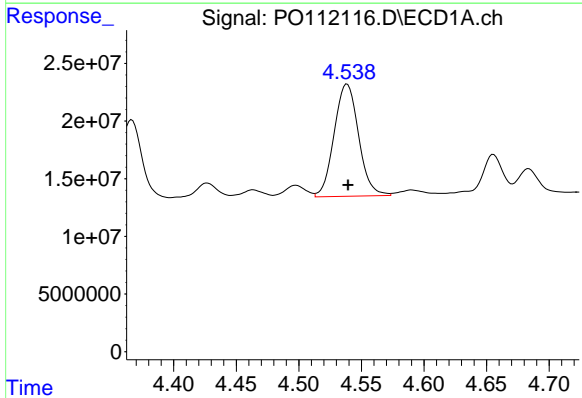
R.T.: 4.046 min  
 Delta R.T.: 0.000 min  
 Response: 87428058  
 Conc: 407.27 ng/ml

Instrument :  
 ECD\_O  
 ClientSampleId :  
 ICVPO070825



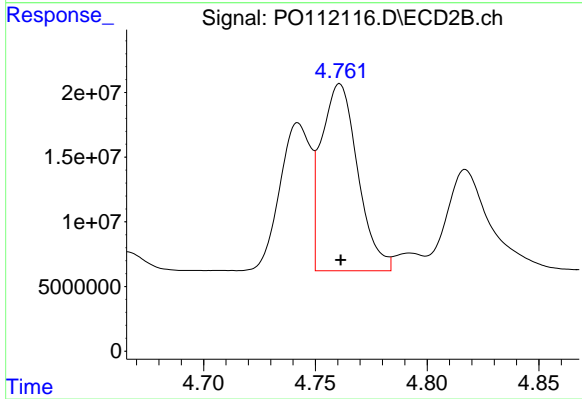
#11 AR-1232-1

R.T.: 4.036 min  
 Delta R.T.: 0.000 min  
 Response: 61302785  
 Conc: 408.41 ng/ml



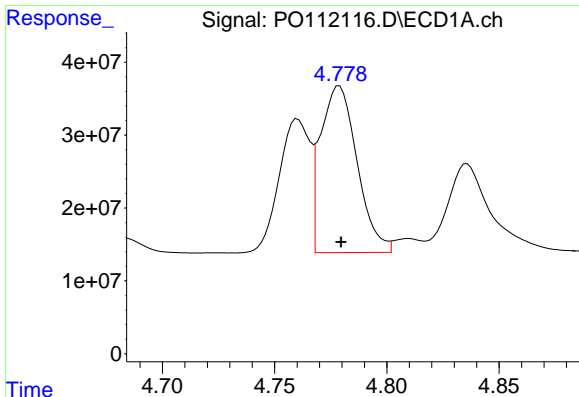
#12 AR-1232-2

R.T.: 4.539 min  
 Delta R.T.: 0.000 min  
 Response: 132612101  
 Conc: 1166.98 ng/ml



#12 AR-1232-2

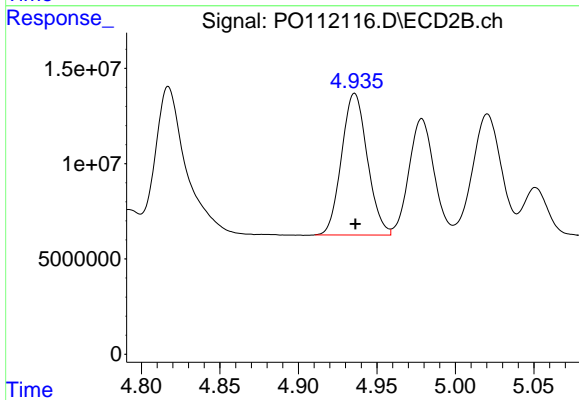
R.T.: 4.761 min  
 Delta R.T.: 0.000 min  
 Response: 164022813  
 Conc: 1071.44 ng/ml



#13 AR-1232-3

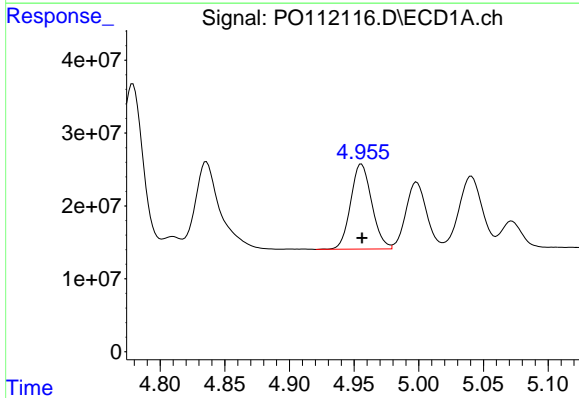
R.T.: 4.779 min  
 Delta R.T.: 0.000 min  
 Response: 259779428  
 Conc: 1134.36 ng/ml

Instrument :  
 ECD\_O  
 ClientSampleId :  
 ICVPO070825



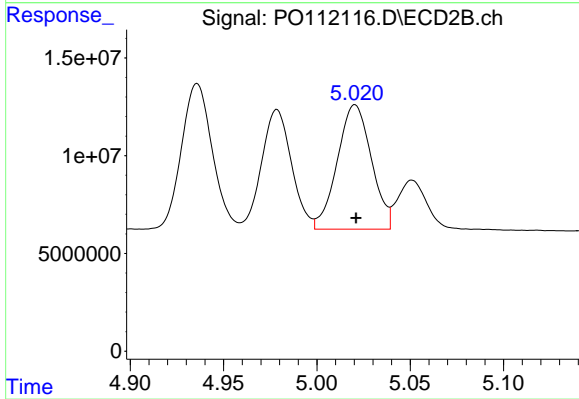
#13 AR-1232-3

R.T.: 4.936 min  
 Delta R.T.: 0.000 min  
 Response: 85046592  
 Conc: 1126.35 ng/ml



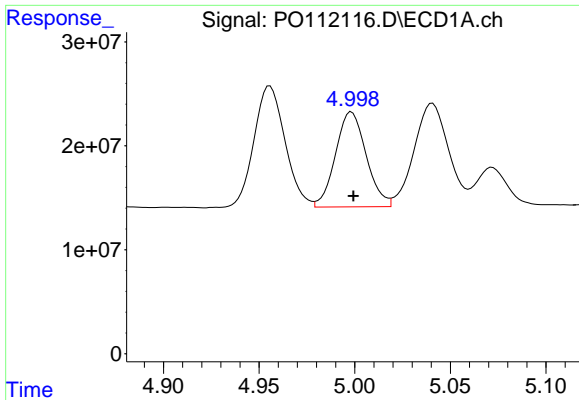
#14 AR-1232-4

R.T.: 4.956 min  
 Delta R.T.: 0.000 min  
 Response: 132842340  
 Conc: 1162.26 ng/ml



#14 AR-1232-4

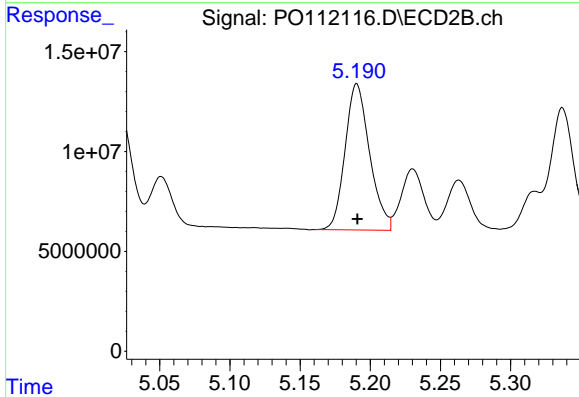
R.T.: 5.020 min  
 Delta R.T.: 0.000 min  
 Response: 81017586  
 Conc: 1227.76 ng/ml



#15 AR-1232-5

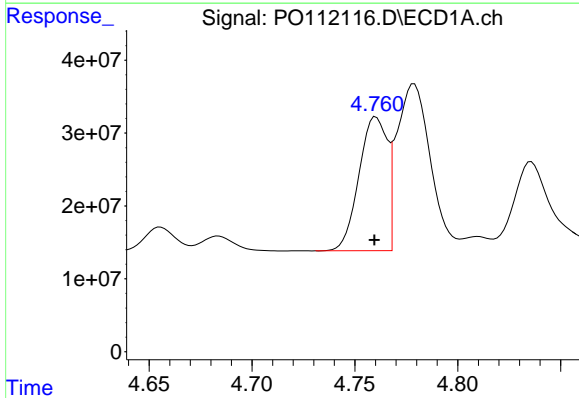
R.T.: 4.998 min  
 Delta R.T.: -0.001 min  
 Response: 102318301  
 Conc: 1393.98 ng/ml

Instrument :  
 ECD\_O  
 ClientSampleId :  
 ICVPO070825



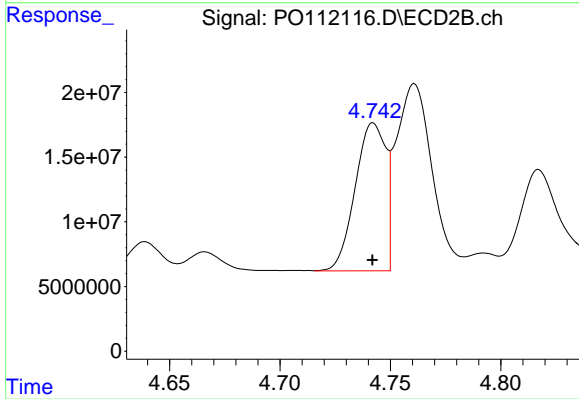
#15 AR-1232-5

R.T.: 5.190 min  
 Delta R.T.: 0.000 min  
 Response: 89116759  
 Conc: 1200.07 ng/ml



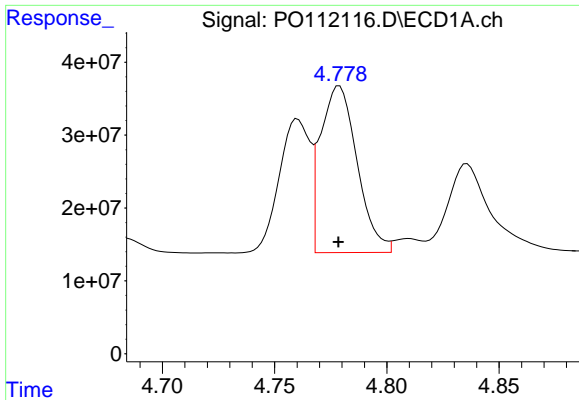
#16 AR-1242-1

R.T.: 4.760 min  
 Delta R.T.: 0.000 min  
 Response: 175259674  
 Conc: 605.10 ng/ml



#16 AR-1242-1

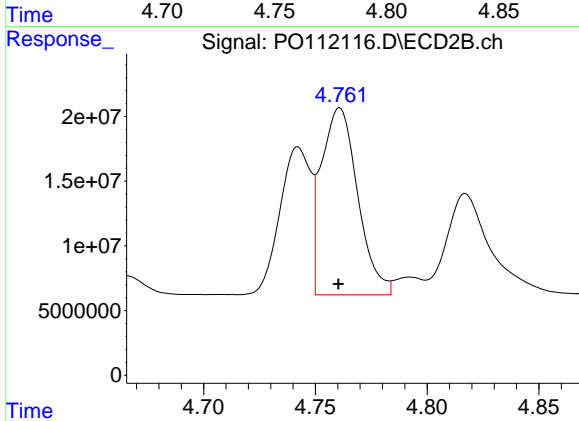
R.T.: 4.742 min  
 Delta R.T.: 0.000 min  
 Response: 109861140  
 Conc: 566.71 ng/ml



#17 AR-1242-2

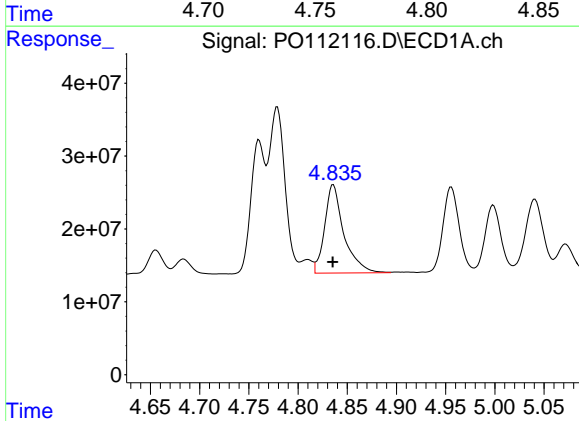
R.T.: 4.779 min  
 Delta R.T.: 0.000 min  
 Response: 259779428  
 Conc: 609.93 ng/ml

Instrument :  
 ECD\_O  
 ClientSampleId :  
 ICVPO070825



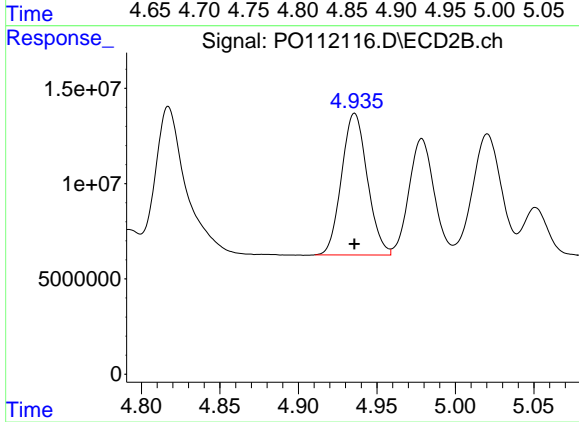
#17 AR-1242-2

R.T.: 4.761 min  
 Delta R.T.: 0.000 min  
 Response: 164022813  
 Conc: 578.87 ng/ml



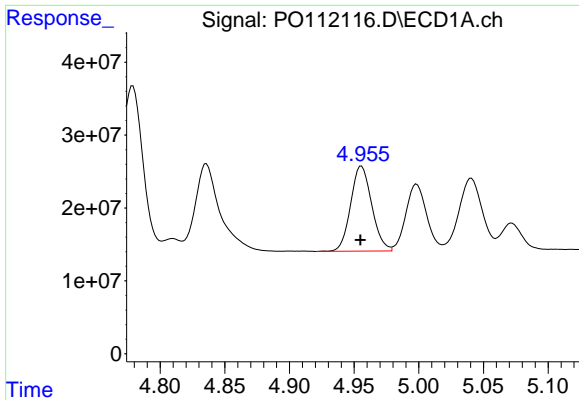
#18 AR-1242-3

R.T.: 4.836 min  
 Delta R.T.: 0.000 min  
 Response: 164964568  
 Conc: 602.75 ng/ml



#18 AR-1242-3

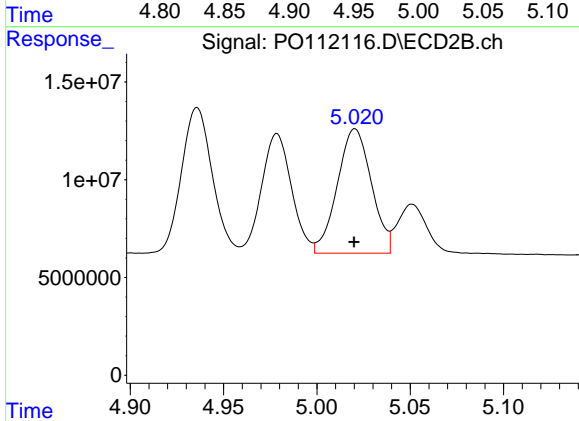
R.T.: 4.936 min  
 Delta R.T.: 0.000 min  
 Response: 85046592  
 Conc: 583.80 ng/ml



#19 AR-1242-4

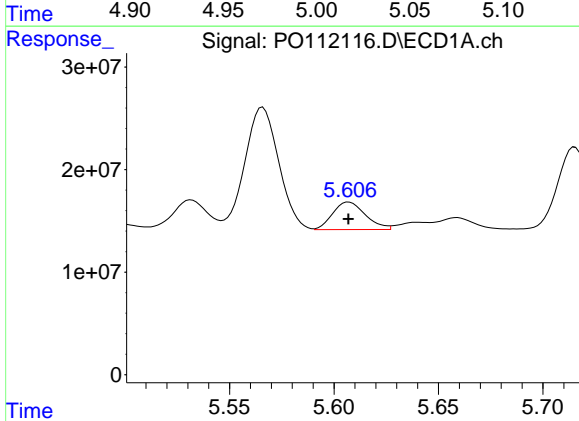
R.T.: 4.956 min  
 Delta R.T.: 0.000 min  
 Response: 132842340  
 Conc: 589.58 ng/ml

Instrument :  
 ECD\_O  
 ClientSampleId :  
 ICVPO070825



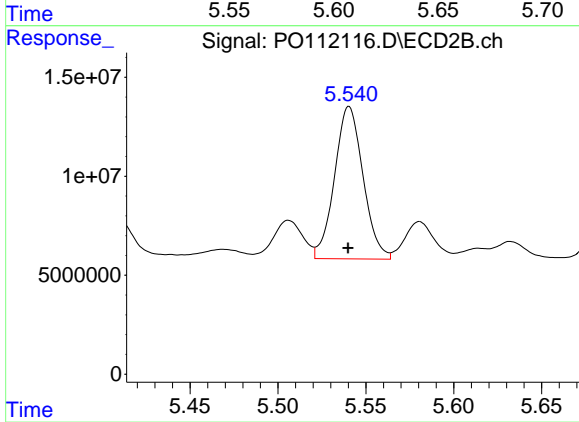
#19 AR-1242-4

R.T.: 5.020 min  
 Delta R.T.: 0.000 min  
 Response: 81017586  
 Conc: 571.19 ng/ml



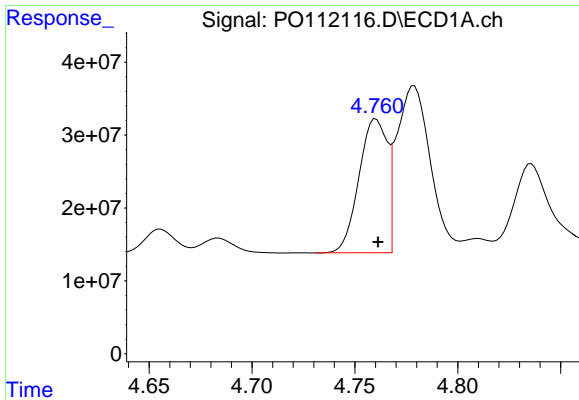
#20 AR-1242-5

R.T.: 5.607 min  
 Delta R.T.: 0.000 min  
 Response: 29284624  
 Conc: 138.35 ng/ml



#20 AR-1242-5

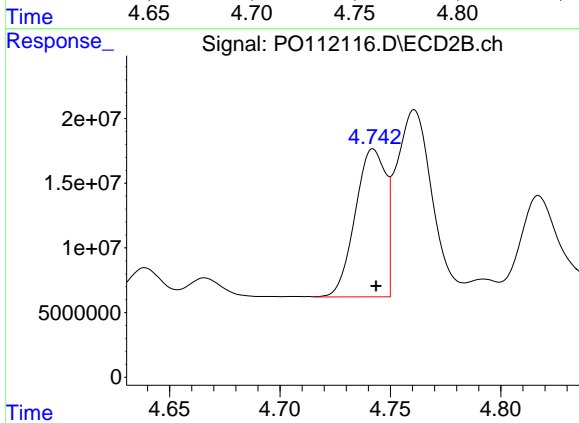
R.T.: 5.540 min  
 Delta R.T.: 0.000 min  
 Response: 86955161  
 Conc: 478.47 ng/ml



#21 AR-1248-1

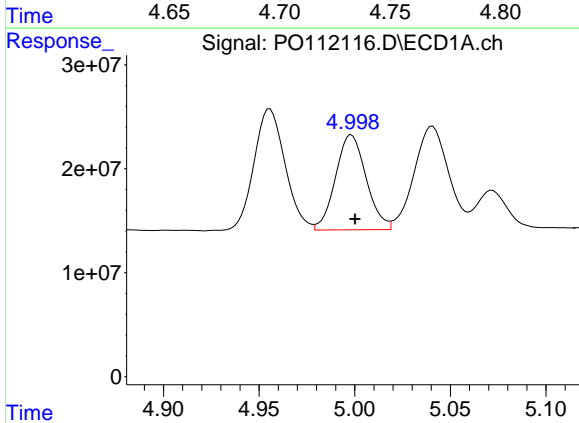
R.T.: 4.760 min  
 Delta R.T.: 0.000 min  
 Response: 175259674  
 Conc: 772.41 ng/ml

Instrument :  
 ECD\_O  
 ClientSampleId :  
 ICVPO070825



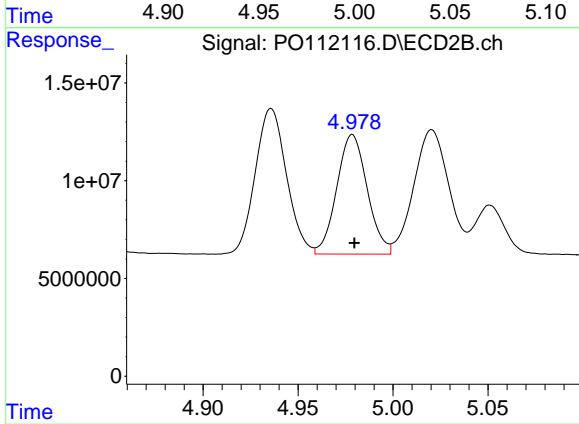
#21 AR-1248-1

R.T.: 4.742 min  
 Delta R.T.: -0.001 min  
 Response: 109861140  
 Conc: 711.68 ng/ml



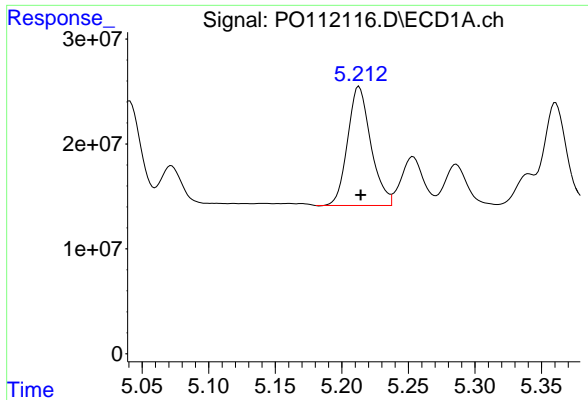
#22 AR-1248-2

R.T.: 4.998 min  
 Delta R.T.: -0.002 min  
 Response: 102318301  
 Conc: 331.85 ng/ml



#22 AR-1248-2

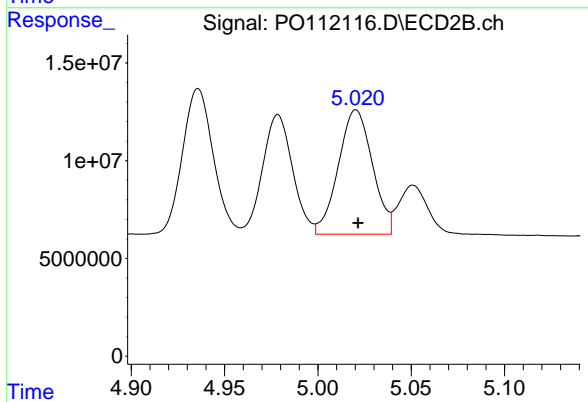
R.T.: 4.979 min  
 Delta R.T.: -0.001 min  
 Response: 68299058  
 Conc: 331.92 ng/ml



#23 AR-1248-3

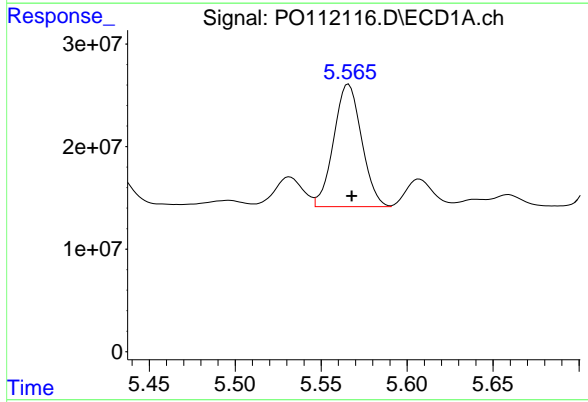
R.T.: 5.213 min  
 Delta R.T.: -0.001 min  
 Response: 137838808  
 Conc: 338.40 ng/ml

Instrument :  
 ECD\_O  
 ClientSampleId :  
 ICVPO070825



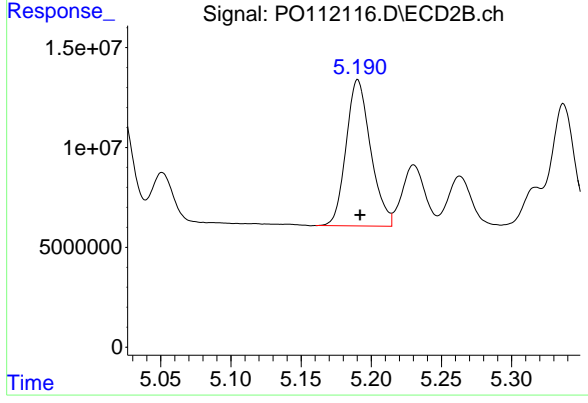
#23 AR-1248-3

R.T.: 5.020 min  
 Delta R.T.: -0.001 min  
 Response: 81017586  
 Conc: 377.18 ng/ml



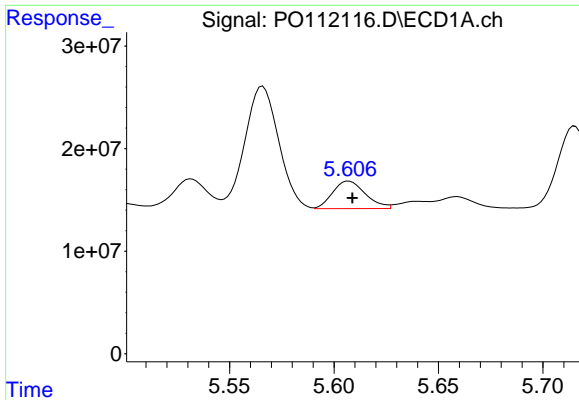
#24 AR-1248-4

R.T.: 5.566 min  
 Delta R.T.: -0.002 min  
 Response: 134962836  
 Conc: 233.84 ng/ml



#24 AR-1248-4

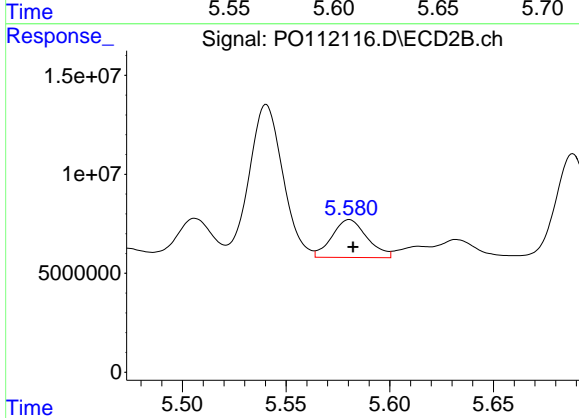
R.T.: 5.190 min  
 Delta R.T.: -0.002 min  
 Response: 89116759  
 Conc: 344.44 ng/ml



#25 AR-1248-5

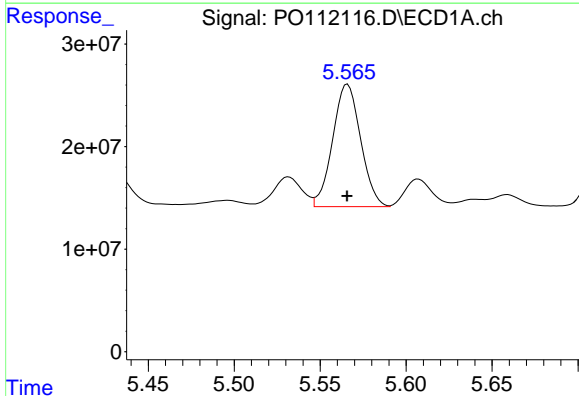
R.T.: 5.607 min  
 Delta R.T.: -0.002 min  
 Response: 29284624  
 Conc: 75.03 ng/ml

Instrument :  
 ECD\_O  
 ClientSampleId :  
 ICVPO070825



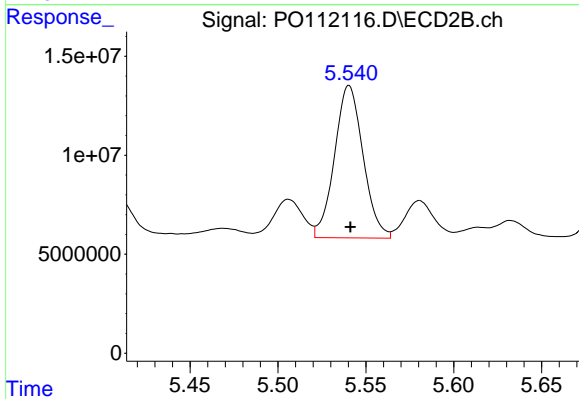
#25 AR-1248-5

R.T.: 5.581 min  
 Delta R.T.: -0.002 min  
 Response: 22496977  
 Conc: 89.79 ng/ml



#26 AR-1254-1

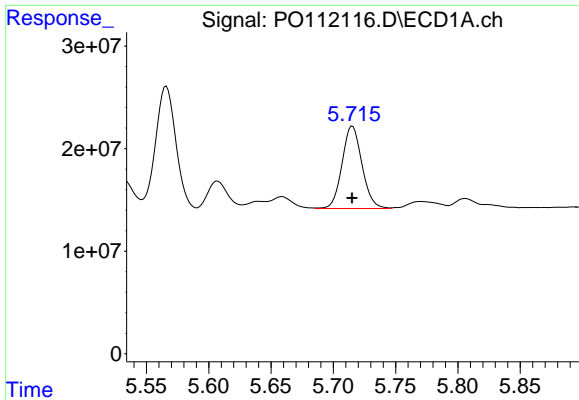
R.T.: 5.566 min  
 Delta R.T.: 0.000 min  
 Response: 134962836  
 Conc: 219.41 ng/ml



#26 AR-1254-1

R.T.: 5.540 min  
 Delta R.T.: 0.000 min  
 Response: 86955161  
 Conc: 228.13 ng/ml

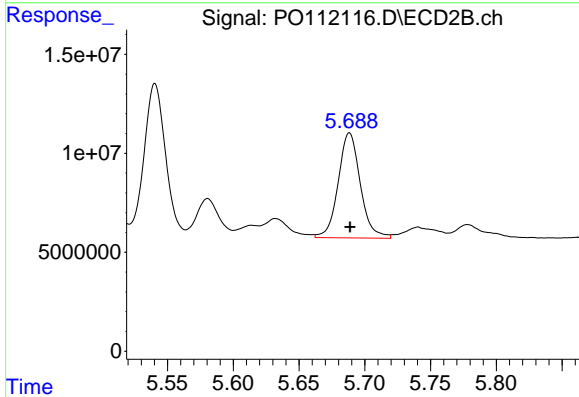




#27 AR-1254-2

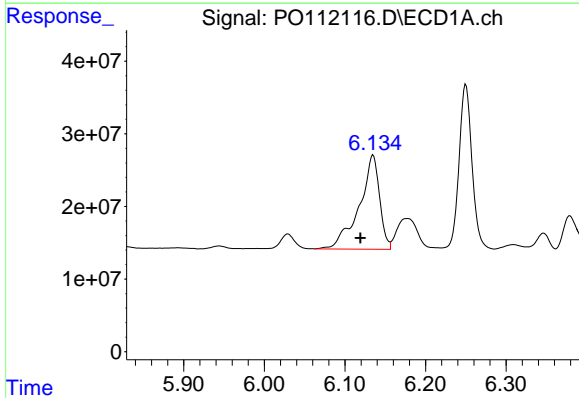
R.T.: 5.715 min  
 Delta R.T.: 0.000 min  
 Response: 90019733  
 Conc: 168.05 ng/ml

Instrument :  
 ECD\_O  
 ClientSampleId :  
 ICVPO070825



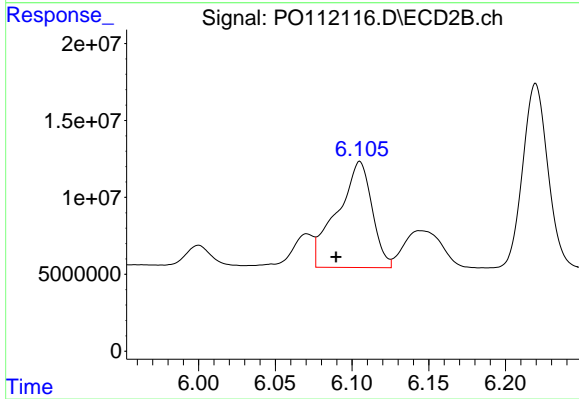
#27 AR-1254-2

R.T.: 5.688 min  
 Delta R.T.: 0.000 min  
 Response: 62065631  
 Conc: 187.05 ng/ml



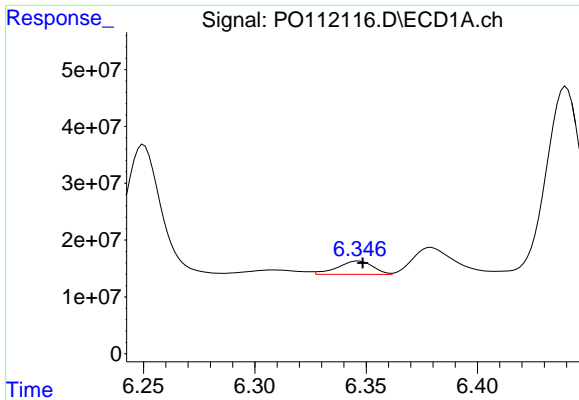
#28 AR-1254-3

R.T.: 6.135 min  
 Delta R.T.: 0.016 min  
 Response: 227652491  
 Conc: 271.15 ng/ml



#28 AR-1254-3

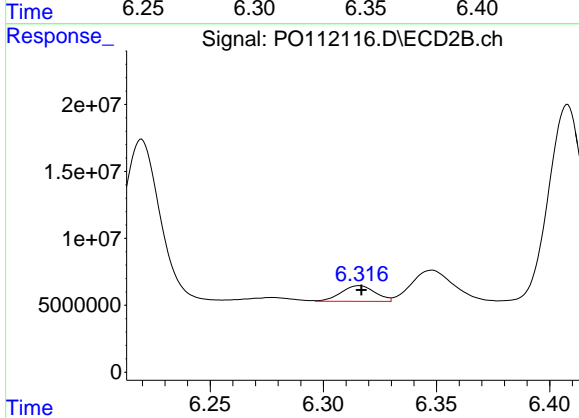
R.T.: 6.105 min  
 Delta R.T.: 0.015 min  
 Response: 108679730  
 Conc: 225.46 ng/ml



#29 AR-1254-4

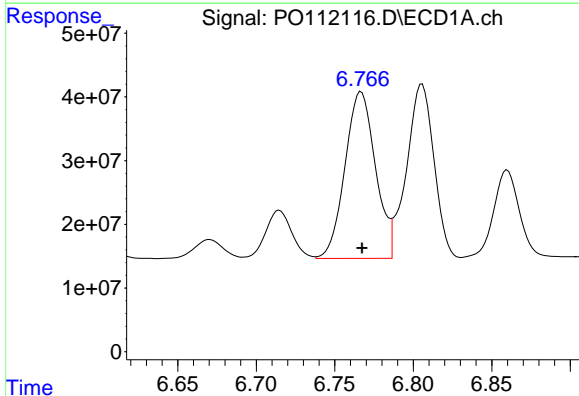
R.T.: 6.347 min  
 Delta R.T.: -0.002 min  
 Response: 25832693  
 Conc: 53.70 ng/ml

Instrument :  
 ECD\_O  
 ClientSampleId :  
 ICVPO070825



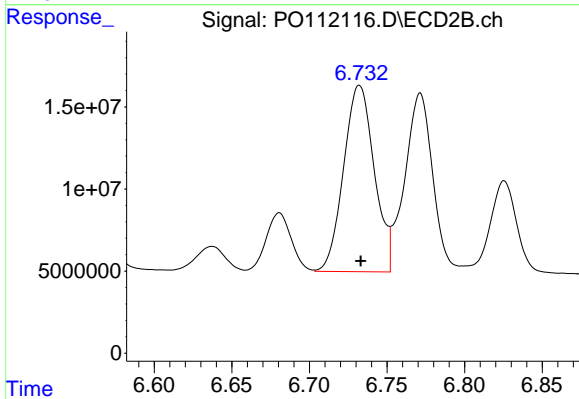
#29 AR-1254-4

R.T.: 6.316 min  
 Delta R.T.: 0.000 min  
 Response: 12233696  
 Conc: 46.93 ng/ml



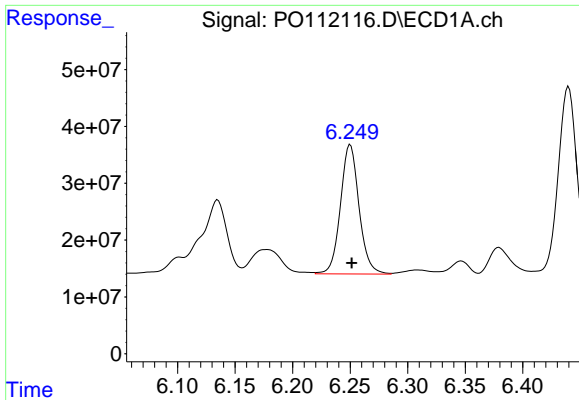
#30 AR-1254-5

R.T.: 6.767 min  
 Delta R.T.: 0.000 min  
 Response: 353687794  
 Conc: 456.99 ng/ml



#30 AR-1254-5

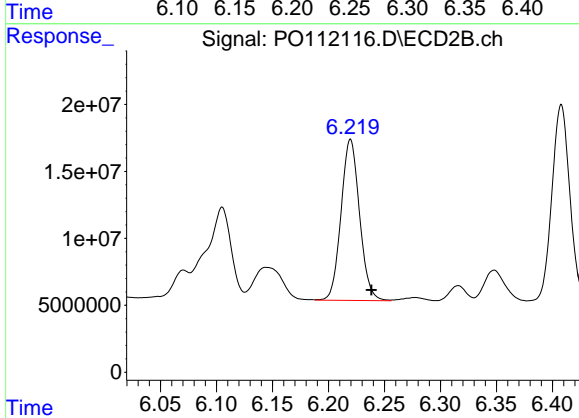
R.T.: 6.732 min  
 Delta R.T.: 0.000 min  
 Response: 156029824  
 Conc: 437.85 ng/ml



#31 AR-1260-1

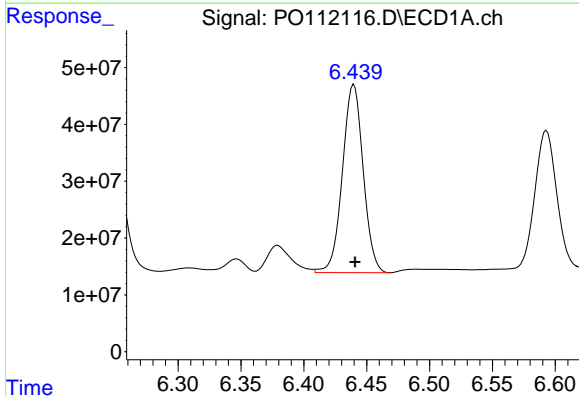
R.T.: 6.250 min  
 Delta R.T.: -0.001 min  
 Response: 257100150  
 Conc: 512.93 ng/ml

Instrument :  
 ECD\_O  
 ClientSampleId :  
 ICVPO070825



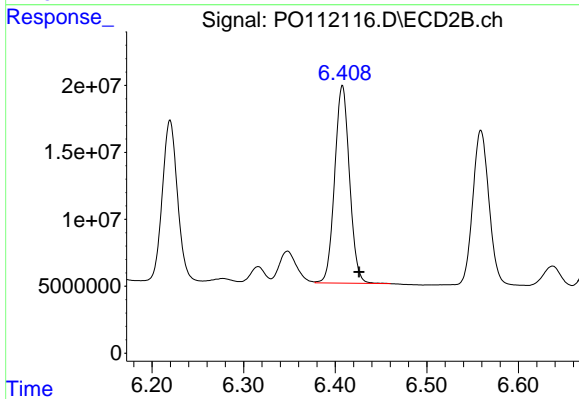
#31 AR-1260-1

R.T.: 6.220 min  
 Delta R.T.: -0.019 min  
 Response: 138564703  
 Conc: 493.88 ng/ml



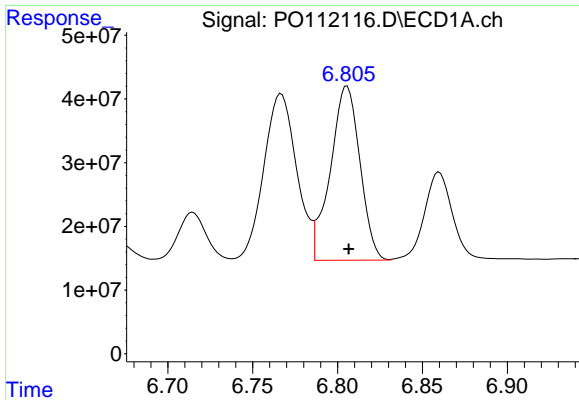
#32 AR-1260-2

R.T.: 6.440 min  
 Delta R.T.: -0.001 min  
 Response: 380263019  
 Conc: 515.17 ng/ml



#32 AR-1260-2

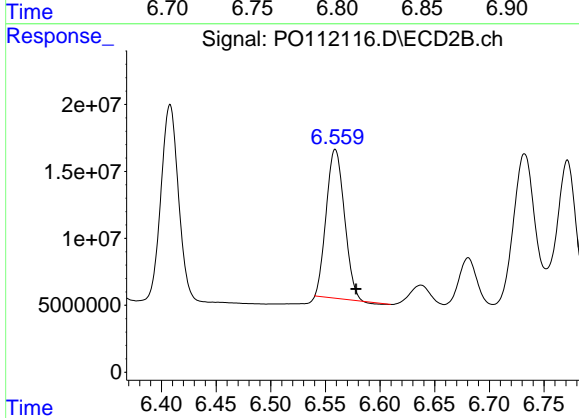
R.T.: 6.408 min  
 Delta R.T.: -0.018 min  
 Response: 165872316  
 Conc: 487.86 ng/ml



#33 AR-1260-3

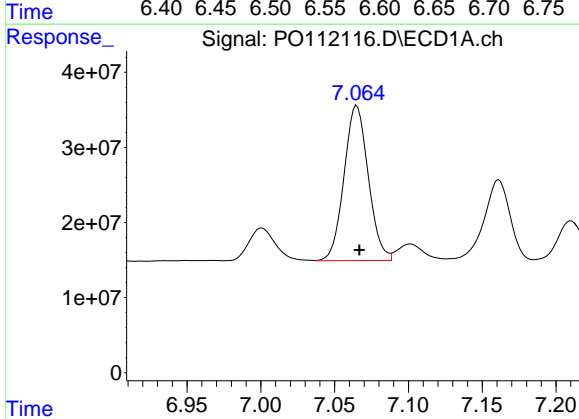
R.T.: 6.806 min  
 Delta R.T.: -0.001 min  
 Response: 331746197  
 Conc: 506.11 ng/ml

Instrument :  
 ECD\_O  
 ClientSampleId :  
 ICVPO070825



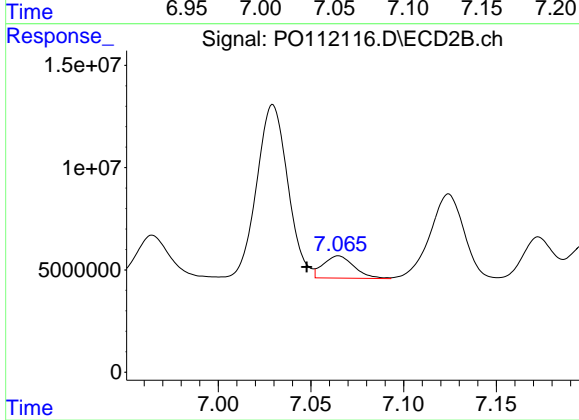
#33 AR-1260-3

R.T.: 6.559 min  
 Delta R.T.: -0.019 min  
 Response: 128088840  
 Conc: 464.79 ng/ml



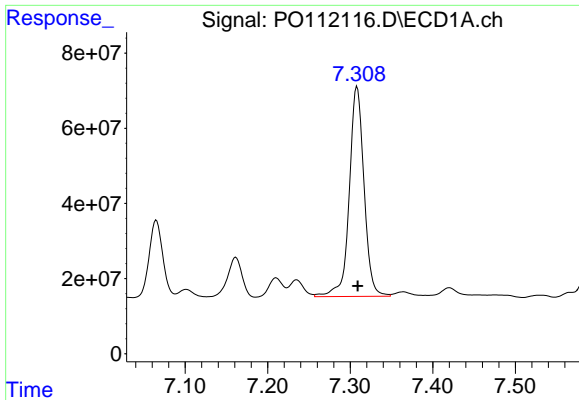
#34 AR-1260-4

R.T.: 7.065 min  
 Delta R.T.: -0.002 min  
 Response: 235897061  
 Conc: 541.98 ng/ml



#34 AR-1260-4

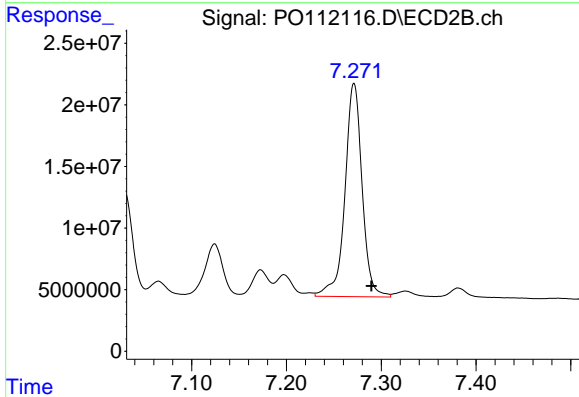
R.T.: 7.065 min  
 Delta R.T.: 0.017 min  
 Response: 12589968  
 Conc: 62.75 ng/ml



#35 AR-1260-5

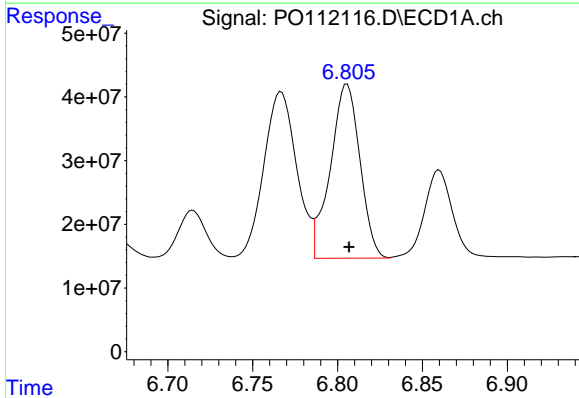
R.T.: 7.308 min  
 Delta R.T.: 0.000 min  
 Response: 694127135  
 Conc: 549.79 ng/ml

Instrument :  
 ECD\_O  
 ClientSampleId :  
 ICVPO070825



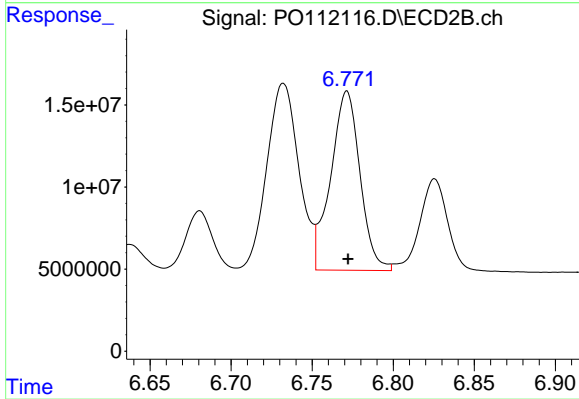
#35 AR-1260-5

R.T.: 7.271 min  
 Delta R.T.: -0.018 min  
 Response: 218449847  
 Conc: 487.91 ng/ml



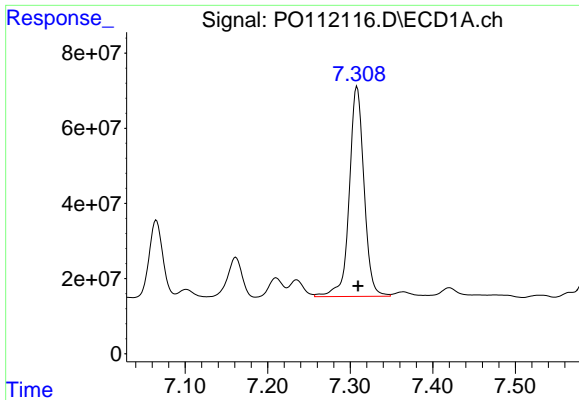
#36 AR-1262-1

R.T.: 6.806 min  
 Delta R.T.: -0.001 min  
 Response: 331746197  
 Conc: 324.70 ng/ml



#36 AR-1262-1

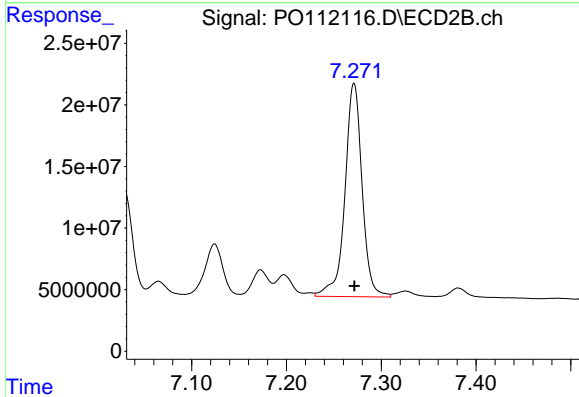
R.T.: 6.771 min  
 Delta R.T.: 0.000 min  
 Response: 137493855  
 Conc: 337.56 ng/ml



#37 AR-1262-2

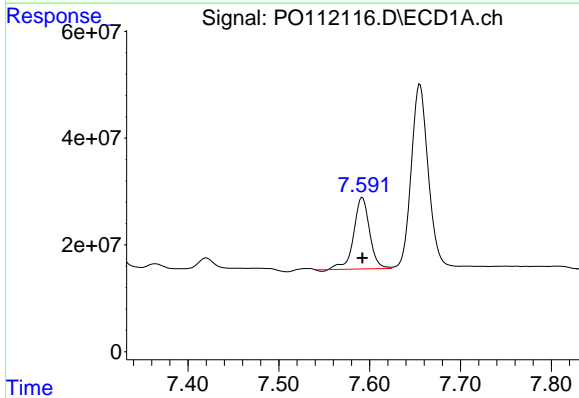
R.T.: 7.308 min  
 Delta R.T.: -0.001 min  
 Response: 694127135  
 Conc: 423.41 ng/ml

Instrument :  
 ECD\_O  
 ClientSampleId :  
 ICVPO070825



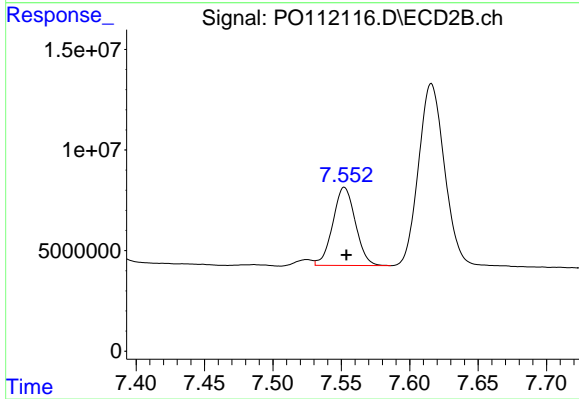
#37 AR-1262-2

R.T.: 7.271 min  
 Delta R.T.: 0.000 min  
 Response: 218449847  
 Conc: 426.20 ng/ml



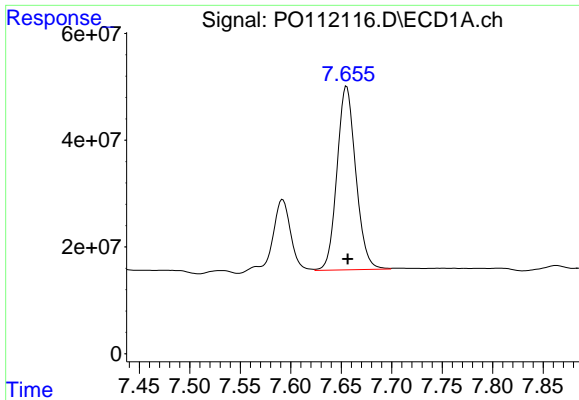
#38 AR-1262-3

R.T.: 7.592 min  
 Delta R.T.: 0.000 min  
 Response: 161799024  
 Conc: 252.03 ng/ml



#38 AR-1262-3

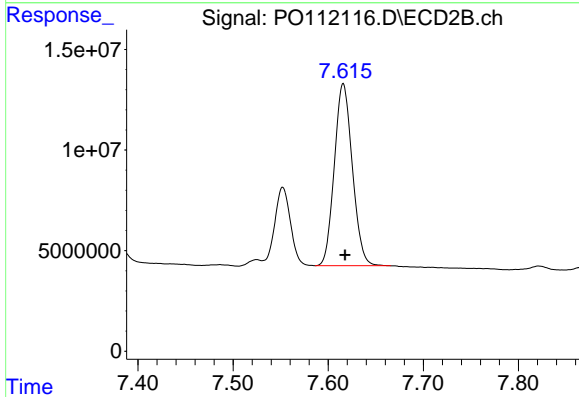
R.T.: 7.552 min  
 Delta R.T.: -0.002 min  
 Response: 44636216  
 Conc: 248.64 ng/ml



#39 AR-1262-4

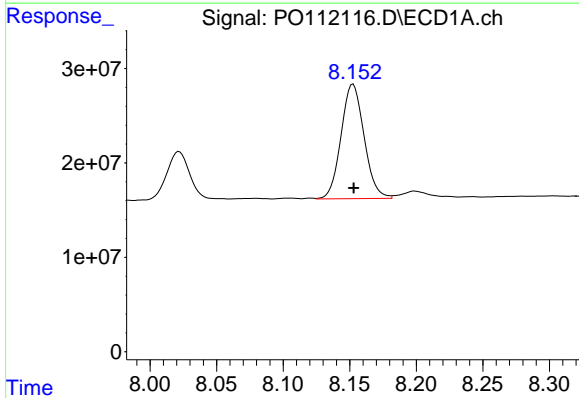
R.T.: 7.655 min  
 Delta R.T.: -0.001 min  
 Response: 445610398  
 Conc: 415.90 ng/ml

Instrument :  
 ECD\_O  
 ClientSampleId :  
 ICVPO070825



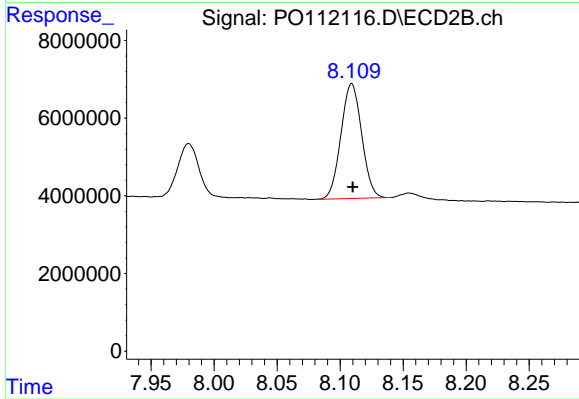
#39 AR-1262-4

R.T.: 7.616 min  
 Delta R.T.: -0.002 min  
 Response: 119162908  
 Conc: 409.61 ng/ml



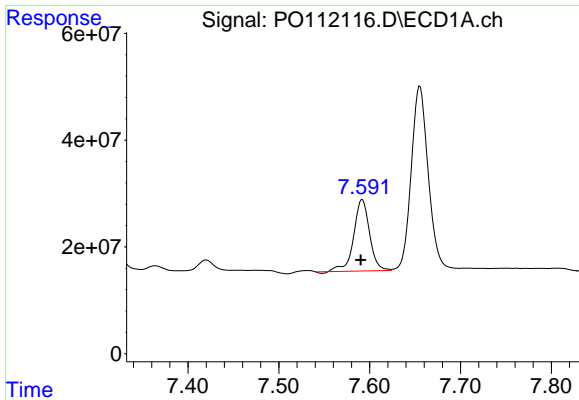
#40 AR-1262-5

R.T.: 8.153 min  
 Delta R.T.: 0.000 min  
 Response: 146085704  
 Conc: 325.98 ng/ml



#40 AR-1262-5

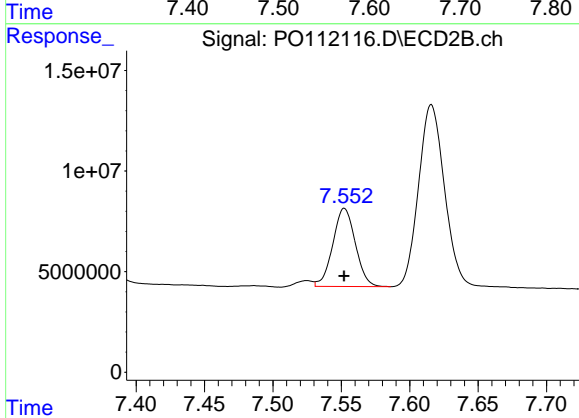
R.T.: 8.109 min  
 Delta R.T.: 0.000 min  
 Response: 33885824  
 Conc: 320.33 ng/ml



#41 AR-1268-1

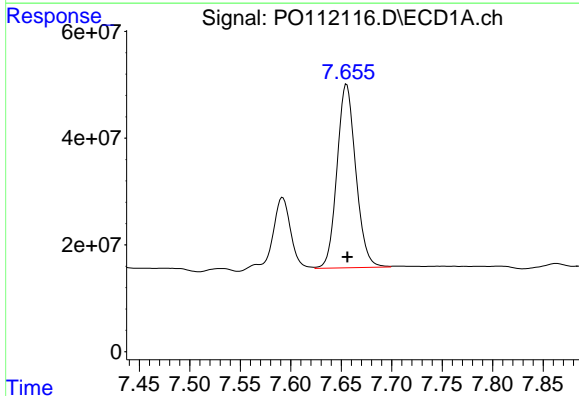
R.T.: 7.592 min  
 Delta R.T.: 0.002 min  
 Response: 161799024  
 Conc: 88.06 ng/ml

Instrument :  
 ECD\_O  
 ClientSampleId :  
 ICVPO070825



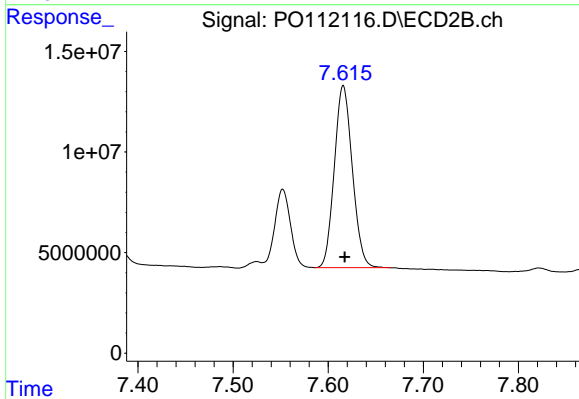
#41 AR-1268-1

R.T.: 7.552 min  
 Delta R.T.: 0.000 min  
 Response: 44636216  
 Conc: 90.82 ng/ml



#42 AR-1268-2

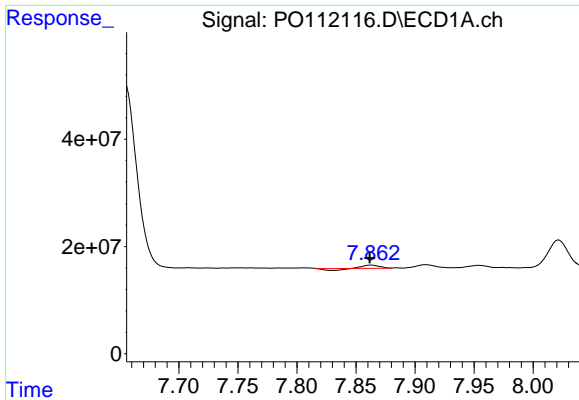
R.T.: 7.655 min  
 Delta R.T.: 0.000 min  
 Response: 445610398  
 Conc: 286.09 ng/ml



#42 AR-1268-2

R.T.: 7.616 min  
 Delta R.T.: -0.002 min  
 Response: 119162908  
 Conc: 285.63 ng/ml

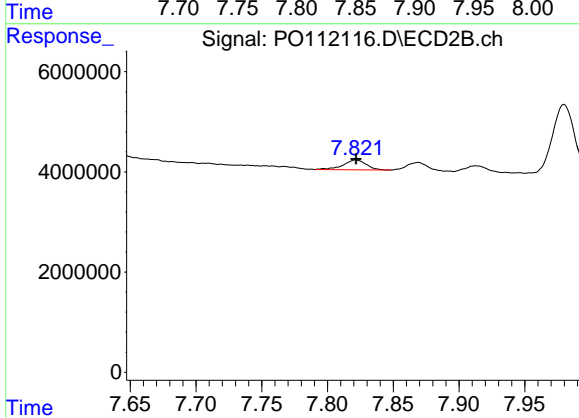




#43 AR-1268-3

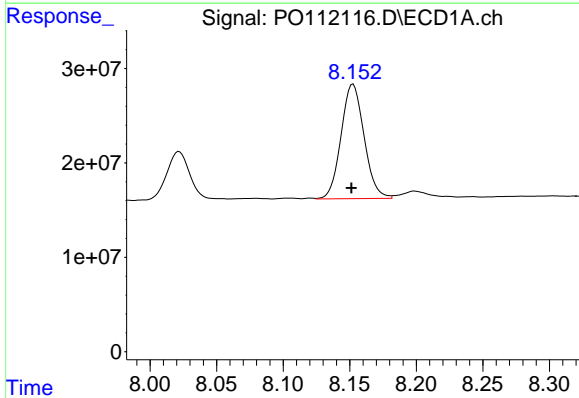
R.T.: 7.863 min  
 Delta R.T.: 0.001 min  
 Response: 2769823  
 Conc: 2.13 ng/ml

Instrument :  
 ECD\_O  
 ClientSampleId :  
 ICVPO070825



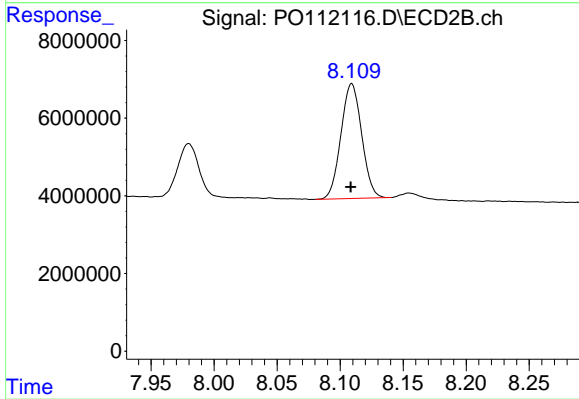
#43 AR-1268-3

R.T.: 7.821 min  
 Delta R.T.: 0.000 min  
 Response: 2396044  
 Conc: 7.57 ng/ml



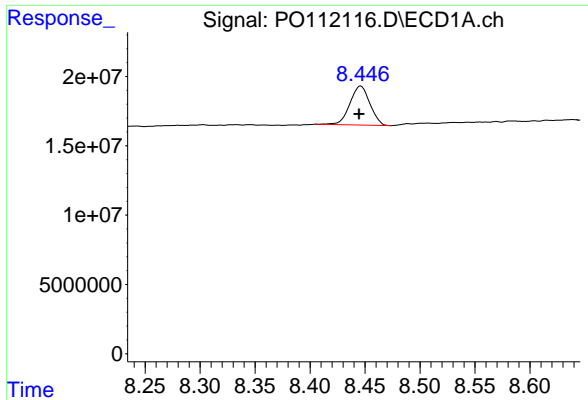
#44 AR-1268-4

R.T.: 8.153 min  
 Delta R.T.: 0.001 min  
 Response: 146085704  
 Conc: 304.09 ng/ml



#44 AR-1268-4

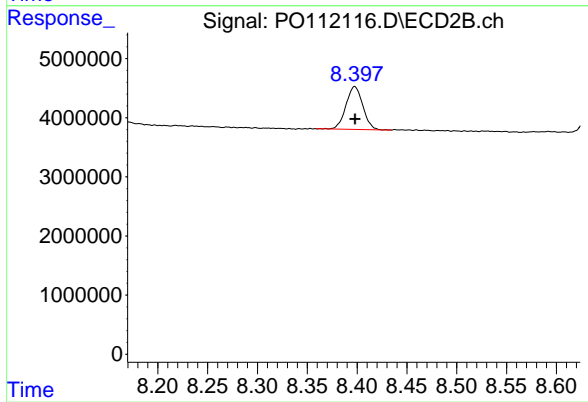
R.T.: 8.109 min  
 Delta R.T.: 0.000 min  
 Response: 33885824  
 Conc: 303.88 ng/ml



#45 AR-1268-5

R.T.: 8.446 min  
 Delta R.T.: 0.002 min  
 Response: 35455171  
 Conc: 10.86 ng/ml

Instrument :  
 ECD\_O  
 ClientSampleId :  
 ICVPO070825



#45 AR-1268-5

R.T.: 8.398 min  
 Delta R.T.: 0.000 min  
 Response: 8565740  
 Conc: 11.79 ng/ml