

Data Path : Z:\pestpcbsrv\HPCHEM1\ECD_0\Data\P0070825\
 Data File : PO112118.D
 Signal(s) : Signal #1: ECD1A.ch Signal #2: ECD2B.ch
 Acq On : 08 Jul 2025 23:47
 Operator : YP/AJ
 Sample : AR1248ICV500
 Misc :
 ALS Vial : 33 Sample Multiplier: 1

Instrument :
 ECD_0
 ClientSampleId :
 ICVPO070825AR1248

Integration File signal 1: autoint1.e
 Integration File signal 2: autoint2.e
 Quant Time: Jul 09 04:05:21 2025
 Quant Method : Z:\pestpcbsrv\HPCHEM1\ECD_0\methods\P0070825.M
 Quant Title : GC EXTRACTABLES
 QLast Update : Wed Jul 09 04:02:23 2025
 Response via : Initial Calibration
 Integrator: ChemStation

Volume Inj. : 2 µl
 Signal #1 Phase : ZB-MR2 Signal #2 Phase: ZB-MR2
 Signal #1 Info : 30Mx0.32mmx 0.50µ Signal #2 Info : 30M x 0.32mm x 0.25µm

Compound	RT#1	RT#2	Resp#1	Resp#2	ng/ml	ng/ml
System Monitoring Compounds						
1) SA Tetrachlo...	3.673	3.666	508.1E6	317.9E6	51.354	49.890
2) SA Decachlor...	8.702	8.650	362.9E6	88364492	53.072	51.272
Target Compounds						
3) L1 AR-1016-1	4.761	4.761	111.3E6	76780516	327.117	344.563
4) L1 AR-1016-2	4.779	4.793	117.5E6	15533213	236.304	47.199 #
5) L1 AR-1016-3	4.836	4.937	64405146	48120118	198.957	283.281 #
6) L1 AR-1016-4	4.957	4.979	74573031	96786968	290.394	705.303 #
7) L1 AR-1016-5	5.213	5.191	189.9E6	121.0E6	693.785	701.756
8) L2 AR-1221-1	3.887	3.873	808507	976839	6.933	11.870 #
9) L2 AR-1221-2	3.974	3.964	7000150	5371372	88.789	90.498
10) L2 AR-1221-3	4.047	4.036	7476888	5743925	27.735	30.427
11) L3 AR-1232-1	4.047	4.036	7476888	5743925	34.830	38.267
12) L3 AR-1232-2	4.538	4.761	50391383	76780516	443.442	501.552
13) L3 AR-1232-3	4.779	4.937	117.5E6	48120118	513.134	637.302
14) L3 AR-1232-4	4.957	5.020	74573031	101.5E6	652.451	1537.449 #
15) L3 AR-1232-5	4.998	5.191	149.3E6	121.0E6	2034.223	1629.656
16) L4 AR-1242-1	4.761	4.742	111.3E6	71004811	384.136	366.272
17) L4 AR-1242-2	4.779	4.761	117.5E6	76780516	275.902	270.972
18) L4 AR-1242-3	4.836	4.937	64405146	48120118	235.325	330.320 #
19) L4 AR-1242-4	4.957	5.020	74573031	101.5E6	330.968	715.263 #
20) L4 AR-1242-5	5.607	5.540	185.2E6	169.8E6	874.873	934.362
21) L5 AR-1248-1	4.761	4.742	111.3E6	71004811	490.349	459.970
22) L5 AR-1248-2	4.998	4.979	149.3E6	96786968	484.269	470.370
23) L5 AR-1248-3	5.213	5.020	189.9E6	101.5E6	466.127	472.319
24) L5 AR-1248-4	5.565	5.191	278.9E6	121.0E6	483.314	467.745
25) L5 AR-1248-5	5.607	5.581	185.2E6	118.9E6	474.463	474.612
26) L6 AR-1254-1	5.565	5.540	278.9E6	169.8E6	453.483	445.487
27) L6 AR-1254-2	5.716	5.689	74048024	54975268	138.230	165.682
28) L6 AR-1254-3	6.119	6.090	120.3E6	73016318	143.343	151.473
29) L6 AR-1254-4	6.348	6.317	86758729	45140043	180.365	173.153
30) L6 AR-1254-5	6.768	6.734	32913872	13109293	42.527	36.787
31) L7 AR-1260-1	6.264	6.233	65674541	34122980	131.024	121.624
32) L7 AR-1260-2	6.439	6.408	25708998	6984747	34.830	20.544 #
33) L7 AR-1260-3	6.794	6.558	14199472	5849106	21.663	21.224
34) L7 AR-1260-4	7.069	7.030	7926857	729782	18.212	3.637 #
35) L7 AR-1260-5	7.308	7.296	11821278	1366956	9.363	3.053 #
36) L8 AR-1262-1	6.794	6.801	14199472	2011096	13.898	4.937 #
37) L8 AR-1262-2	7.308	7.270	11821278	2210842	7.211	4.313 #
38) L8 AR-1262-3	7.593	7.551	2266197	838780	3.530	4.672 #
39) L8 AR-1262-4	7.655	7.614	7247861	1116363	6.765	3.837 #
40) L8 AR-1262-5	8.169	8.109	5058453	-76447	11.288	N.D. #
41) L9 AR-1268-1	7.593	7.551	2266197	838780	1.233	1.707 #

Data Path : Z:\pestpcbsrv\HPCHEM1\ECD_0\Data\P0070825\
 Data File : P0112118.D
 Signal(s) : Signal #1: ECD1A.ch Signal #2: ECD2B.ch
 Acq On : 08 Jul 2025 23:47
 Operator : YP/AJ
 Sample : AR1248ICV500
 Misc :
 ALS Vial : 33 Sample Multiplier: 1

Instrument :
 ECD_0
 ClientSampleId :
 ICVPO070825AR1248

Integration File signal 1: autoint1.e
 Integration File signal 2: autoint2.e
 Quant Time: Jul 09 04:05:21 2025
 Quant Method : Z:\pestpcbsrv\HPCHEM1\ECD_0\methods\P0070825.M
 Quant Title : GC EXTRACTABLES
 QLast Update : Wed Jul 09 04:02:23 2025
 Response via : Initial Calibration
 Integrator: ChemStation

Volume Inj. : 2 µl
 Signal #1 Phase : ZB-MR1 Signal #2 Phase: ZB-MR2
 Signal #1 Info : 30Mx0.32mmx 0.50µ Signal #2 Info : 30M x 0.32mm x 0.25µm

	Compound	RT#1	RT#2	Resp#1	Resp#2	ng/ml	ng/ml
42)	L9 AR-1268-2	7.655	7.614	7247861	1116363	4.653	2.676 #
43)	L9 AR-1268-3	7.860	7.821	-2786880	684596	N.D.	2.164 #
44)	L9 AR-1268-4	8.169	8.109	5058453	-76447	10.529	N.D. #
45)	L9 AR-1268-5	8.445	8.398	6117965	689628	1.875	0.949 #

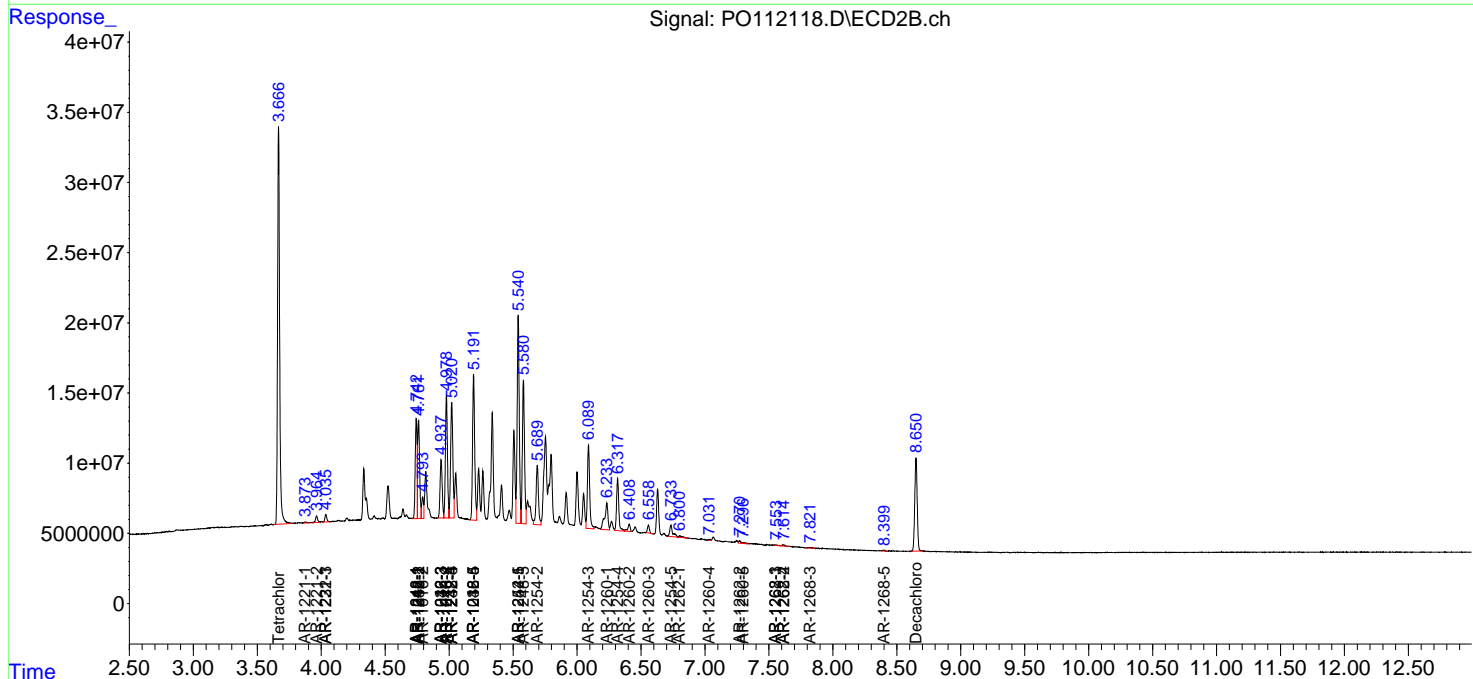
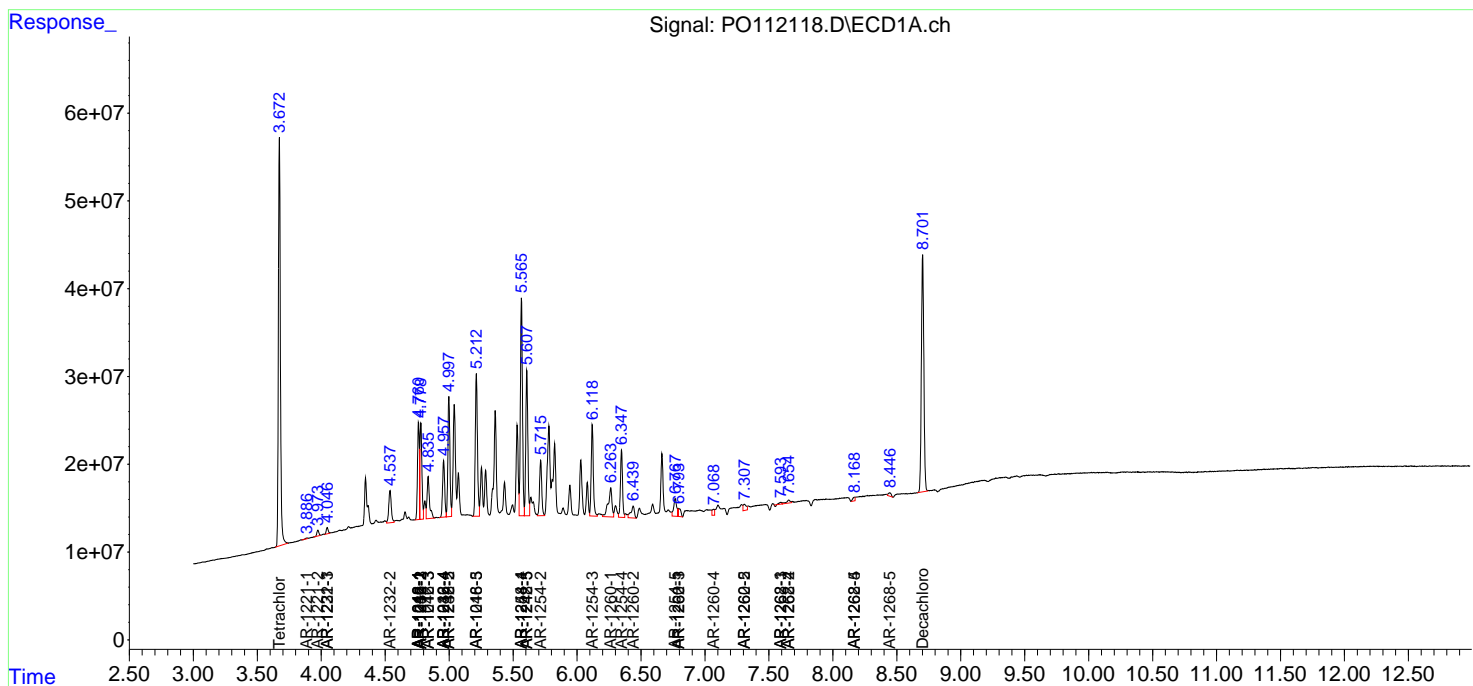
(f)=RT Delta > 1/2 Window (#)=Amounts differ by > 25% (m)=manual int.

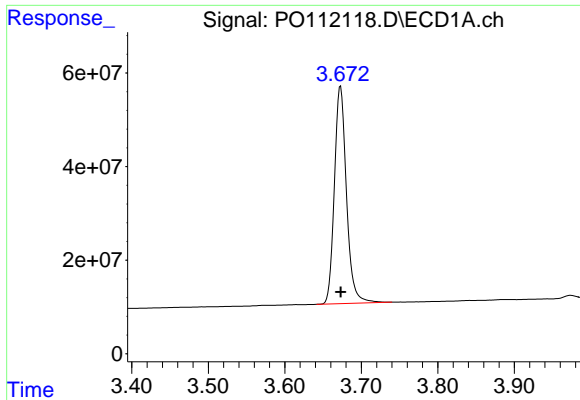
Data Path : Z:\pestpcbsrv\HPCHEM1\ECD_O\Data\PO070825\
 Data File : PO112118.D
 Signal(s) : Signal #1: ECD1A.ch Signal #2: ECD2B.ch
 Acq On : 08 Jul 2025 23:47
 Operator : YP/AJ
 Sample : AR1248ICV500
 Misc :
 ALS Vial : 33 Sample Multiplier: 1

Instrument :
 ECD_O
 ClientSampleId :
 ICVPO070825AR1248

Integration File signal 1: autoint1.e
 Integration File signal 2: autoint2.e
 Quant Time: Jul 09 04:05:21 2025
 Quant Method : Z:\pestpcbsrv\HPCHEM1\ECD_O\methods\PO070825.M
 Quant Title : GC EXTRACTABLES
 QLast Update : Wed Jul 09 04:02:23 2025
 Response via : Initial Calibration
 Integrator: ChemStation

Volume Inj. : 2 µl
 Signal #1 Phase : ZB-MR1 Signal #2 Phase: ZB-MR2
 Signal #1 Info : 30Mx0.32mmx 0.50µ Signal #2 Info : 30M x 0.32mm x 0.25µm

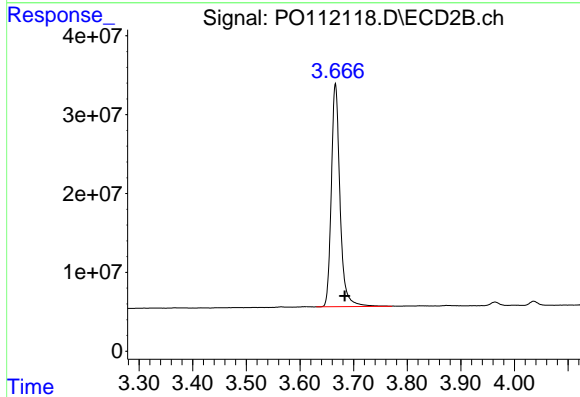




#1 Tetrachloro-m-xylene

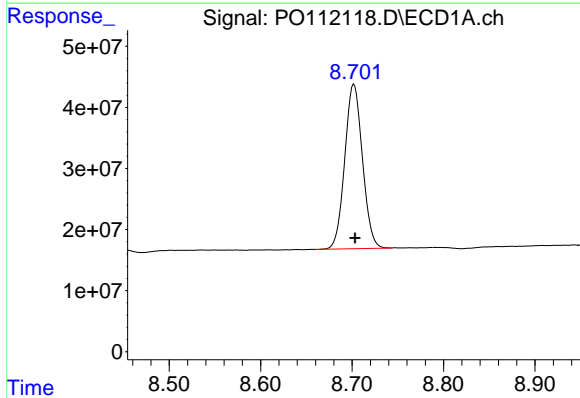
R.T.: 3.673 min
 Delta R.T.: 0.000 min
 Response: 508134642
 Conc: 51.35 ng/ml

Instrument :
 ECD_O
 ClientSampleId :
 ICVPO070825AR1248



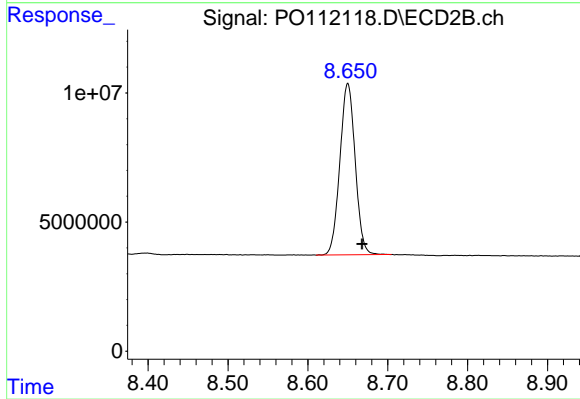
#1 Tetrachloro-m-xylene

R.T.: 3.666 min
 Delta R.T.: -0.017 min
 Response: 317852312
 Conc: 49.89 ng/ml



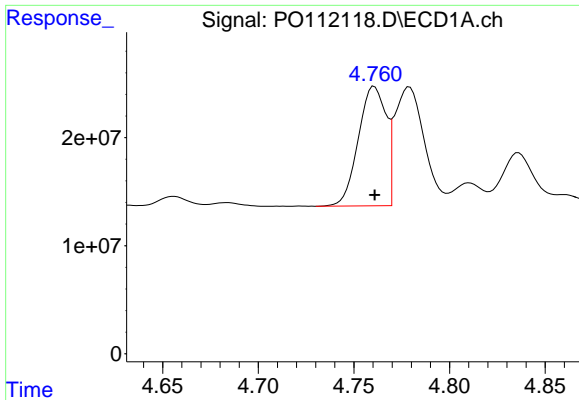
#2 Decachlorobiphenyl

R.T.: 8.702 min
 Delta R.T.: -0.001 min
 Response: 362852383
 Conc: 53.07 ng/ml



#2 Decachlorobiphenyl

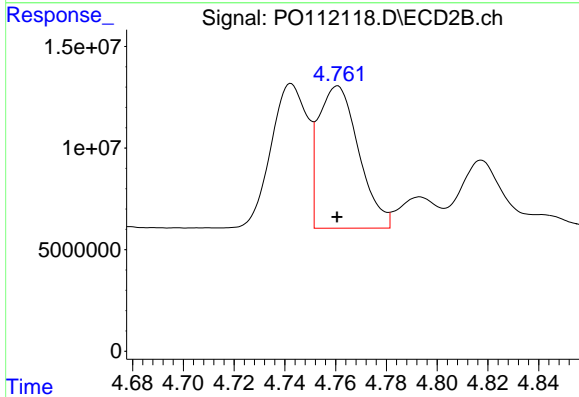
R.T.: 8.650 min
 Delta R.T.: -0.018 min
 Response: 88364492
 Conc: 51.27 ng/ml



#3 AR-1016-1

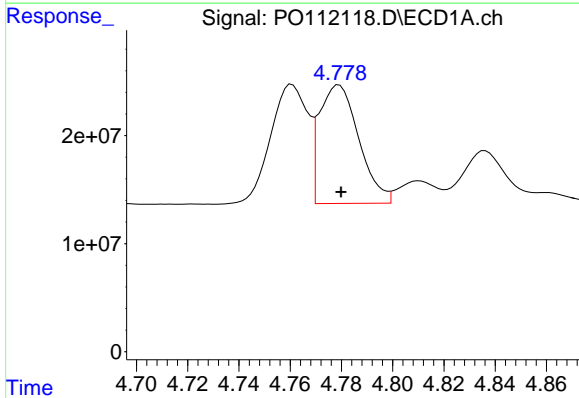
R.T.: 4.761 min
 Delta R.T.: 0.000 min
 Response: 111259949
 Conc: 327.12 ng/ml

Instrument :
 ECD_O
 ClientSampleId :
 ICVPO070825AR1248



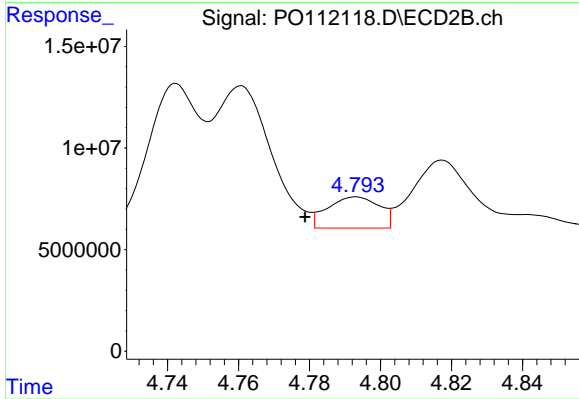
#3 AR-1016-1

R.T.: 4.761 min
 Delta R.T.: 0.000 min
 Response: 76780516
 Conc: 344.56 ng/ml



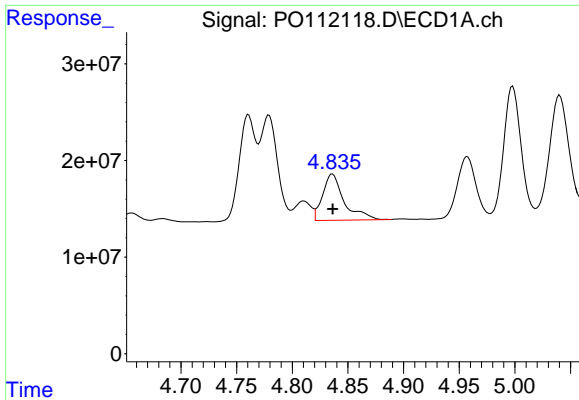
#4 AR-1016-2

R.T.: 4.779 min
 Delta R.T.: 0.000 min
 Response: 117512227
 Conc: 236.30 ng/ml



#4 AR-1016-2

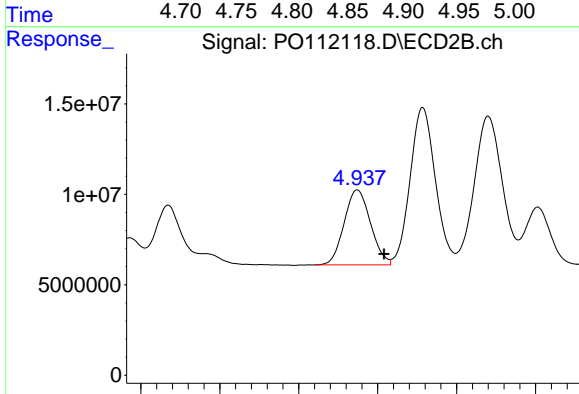
R.T.: 4.793 min
 Delta R.T.: 0.014 min
 Response: 15533213
 Conc: 47.20 ng/ml



#5 AR-1016-3

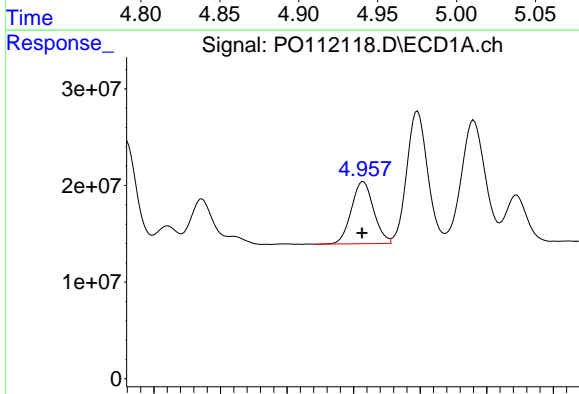
R.T.: 4.836 min
 Delta R.T.: 0.000 min
 Response: 64405146
 Conc: 198.96 ng/ml

Instrument :
 ECD_O
 ClientSampleId :
 ICVPO070825AR1248



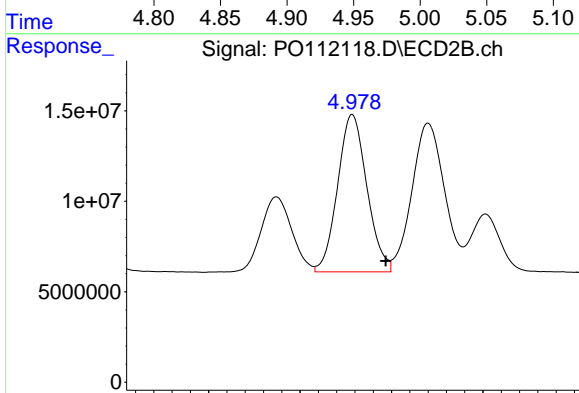
#5 AR-1016-3

R.T.: 4.937 min
 Delta R.T.: -0.017 min
 Response: 48120118
 Conc: 283.28 ng/ml



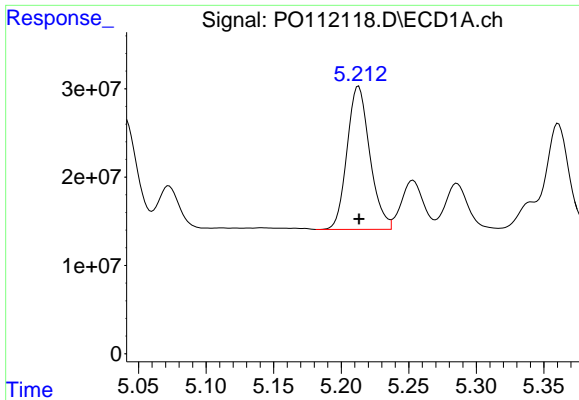
#6 AR-1016-4

R.T.: 4.957 min
 Delta R.T.: 0.000 min
 Response: 74573031
 Conc: 290.39 ng/ml



#6 AR-1016-4

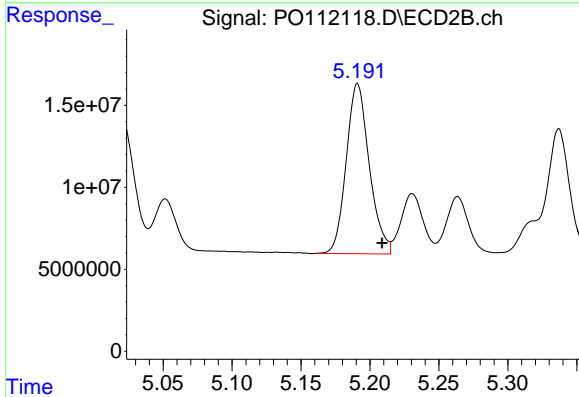
R.T.: 4.979 min
 Delta R.T.: -0.018 min
 Response: 96786968
 Conc: 705.30 ng/ml



#7 AR-1016-5

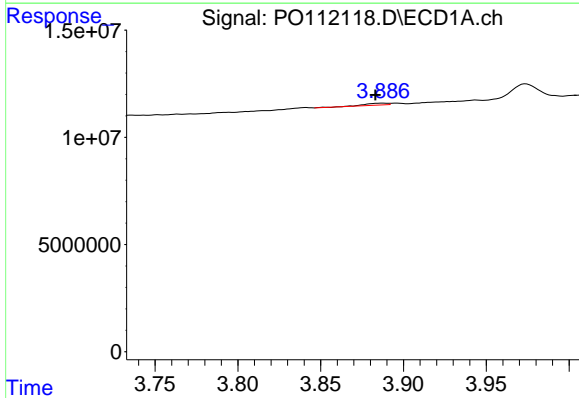
R.T.: 5.213 min
 Delta R.T.: 0.000 min
 Response: 189862604
 Conc: 693.79 ng/ml

Instrument :
 ECD_O
 ClientSampleId :
 ICVPO070825AR1248



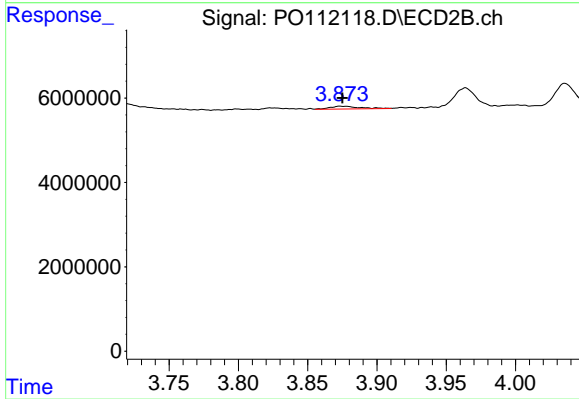
#7 AR-1016-5

R.T.: 5.191 min
 Delta R.T.: -0.018 min
 Response: 121018109
 Conc: 701.76 ng/ml



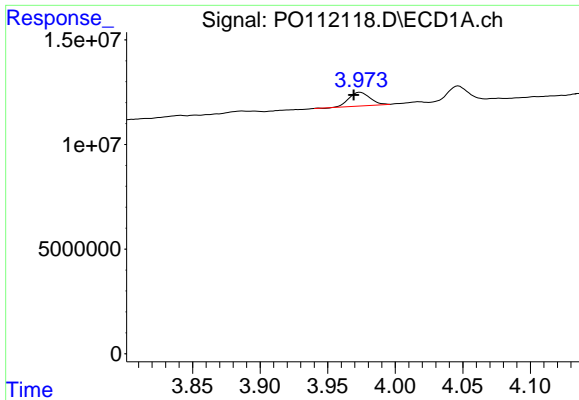
#8 AR-1221-1

R.T.: 3.887 min
 Delta R.T.: 0.004 min
 Response: 808507
 Conc: 6.93 ng/ml



#8 AR-1221-1

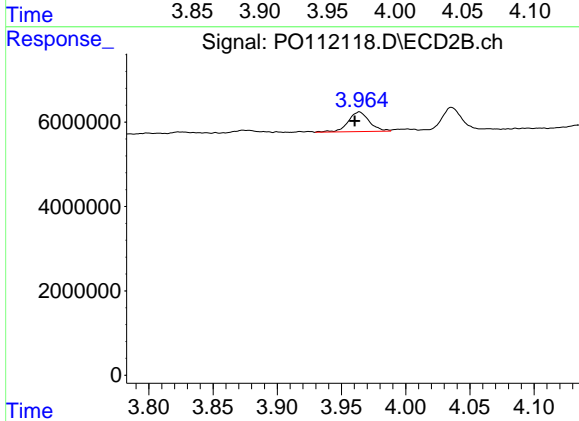
R.T.: 3.873 min
 Delta R.T.: -0.002 min
 Response: 976839
 Conc: 11.87 ng/ml



#9 AR-1221-2

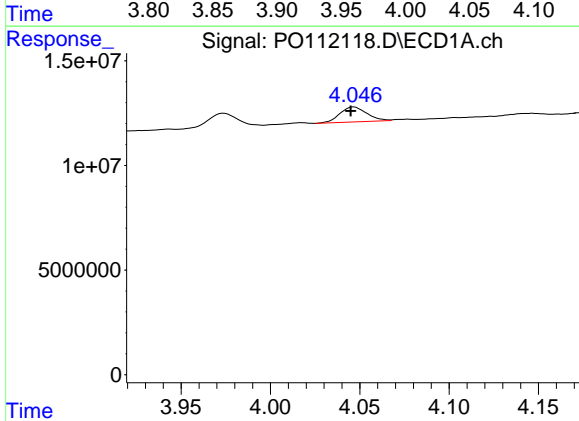
R.T.: 3.974 min
 Delta R.T.: 0.004 min
 Response: 7000150
 Conc: 88.79 ng/ml

Instrument :
 ECD_O
 ClientSampleId :
 ICVPO070825AR1248



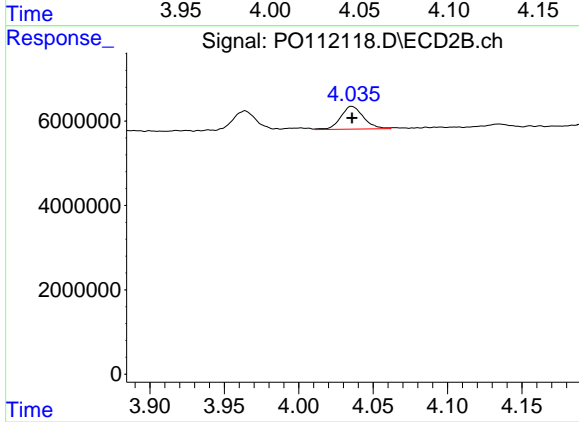
#9 AR-1221-2

R.T.: 3.964 min
 Delta R.T.: 0.004 min
 Response: 5371372
 Conc: 90.50 ng/ml



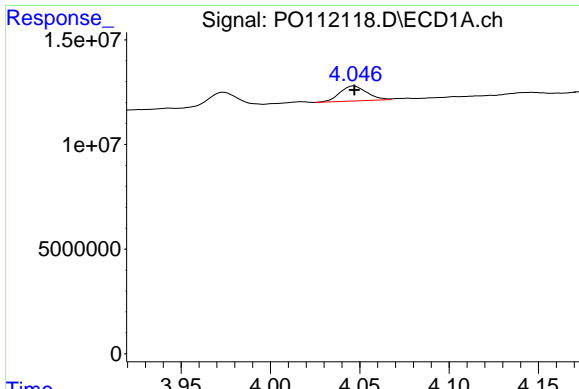
#10 AR-1221-3

R.T.: 4.047 min
 Delta R.T.: 0.002 min
 Response: 7476888
 Conc: 27.74 ng/ml



#10 AR-1221-3

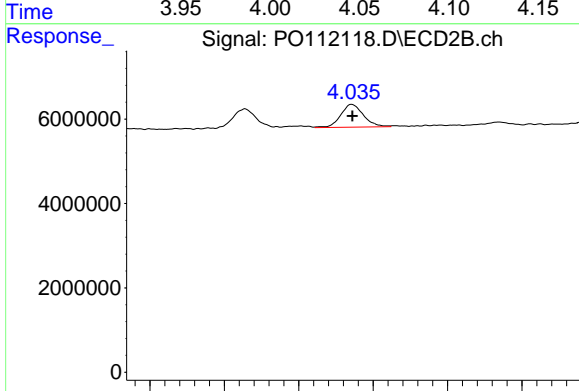
R.T.: 4.036 min
 Delta R.T.: 0.000 min
 Response: 5743925
 Conc: 30.43 ng/ml



#11 AR-1232-1

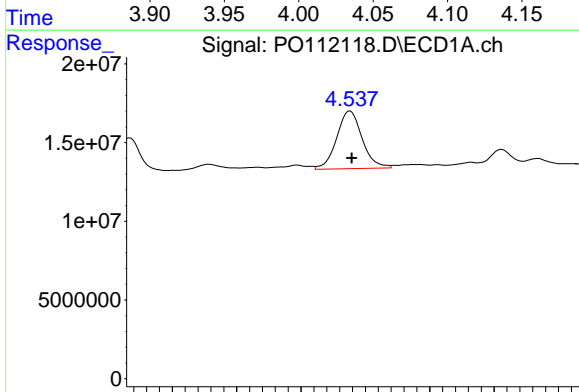
R.T.: 4.047 min
 Delta R.T.: 0.000 min
 Response: 7476888
 Conc: 34.83 ng/ml

Instrument :
 ECD_O
 ClientSampleId :
 ICVPO070825AR1248



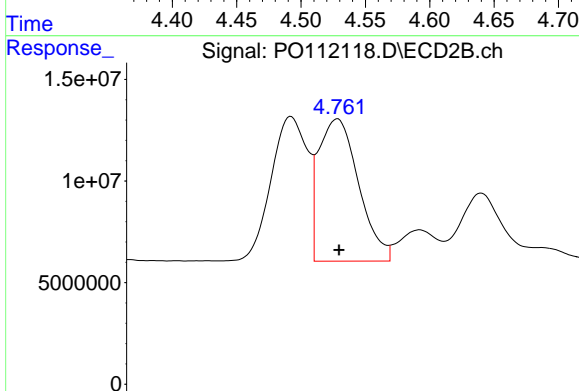
#11 AR-1232-1

R.T.: 4.036 min
 Delta R.T.: 0.000 min
 Response: 5743925
 Conc: 38.27 ng/ml



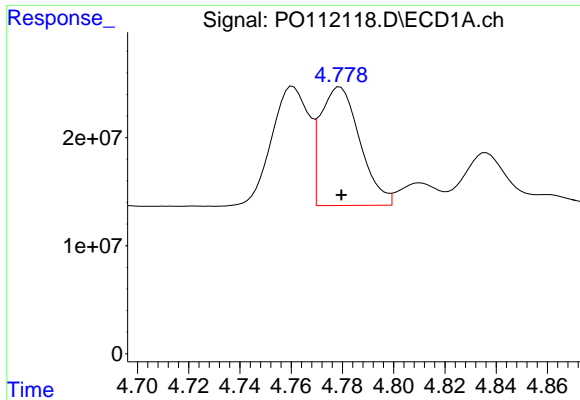
#12 AR-1232-2

R.T.: 4.538 min
 Delta R.T.: -0.001 min
 Response: 50391383
 Conc: 443.44 ng/ml



#12 AR-1232-2

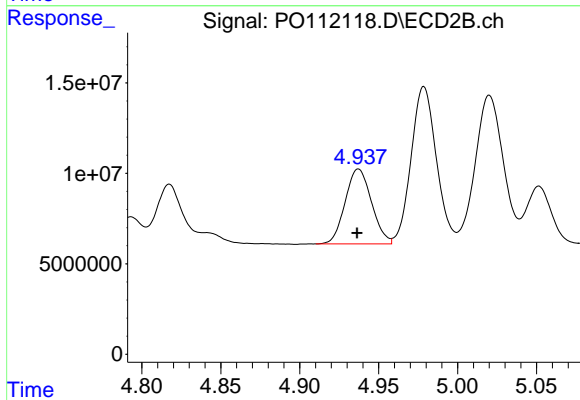
R.T.: 4.761 min
 Delta R.T.: 0.000 min
 Response: 76780516
 Conc: 501.55 ng/ml



#13 AR-1232-3

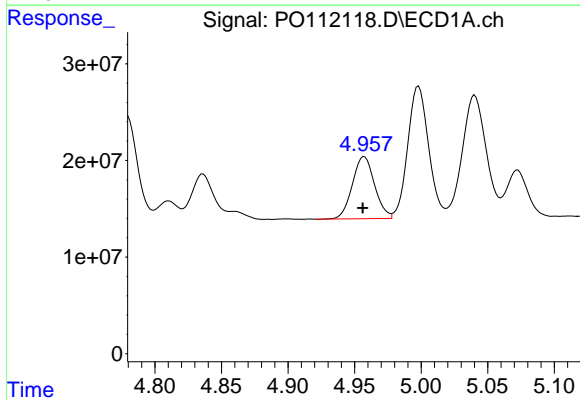
R.T.: 4.779 min
 Delta R.T.: 0.000 min
 Response: 117512227
 Conc: 513.13 ng/ml

Instrument :
 ECD_O
 ClientSampleId :
 ICVPO070825AR1248



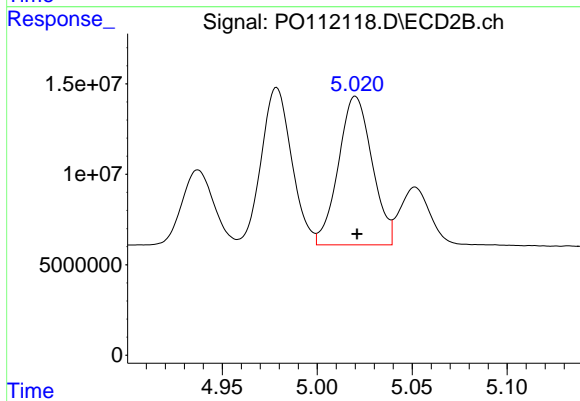
#13 AR-1232-3

R.T.: 4.937 min
 Delta R.T.: 0.000 min
 Response: 48120118
 Conc: 637.30 ng/ml



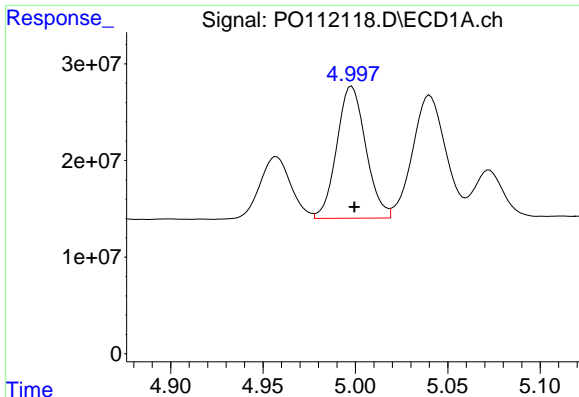
#14 AR-1232-4

R.T.: 4.957 min
 Delta R.T.: 0.001 min
 Response: 74573031
 Conc: 652.45 ng/ml



#14 AR-1232-4

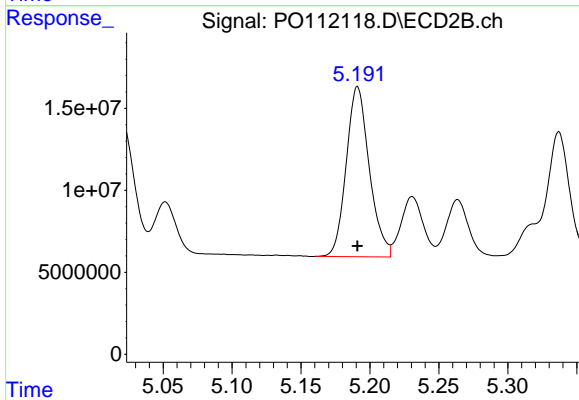
R.T.: 5.020 min
 Delta R.T.: 0.000 min
 Response: 101453483
 Conc: 1537.45 ng/ml



#15 AR-1232-5

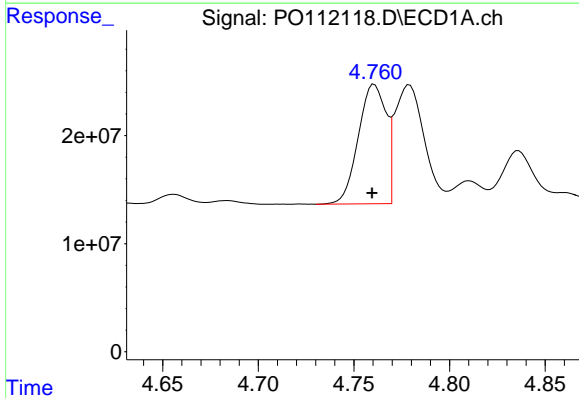
R.T.: 4.998 min
 Delta R.T.: -0.001 min
 Response: 149312470
 Conc: 2034.22 ng/ml

Instrument :
 ECD_O
 ClientSampleId :
 ICVPO070825AR1248



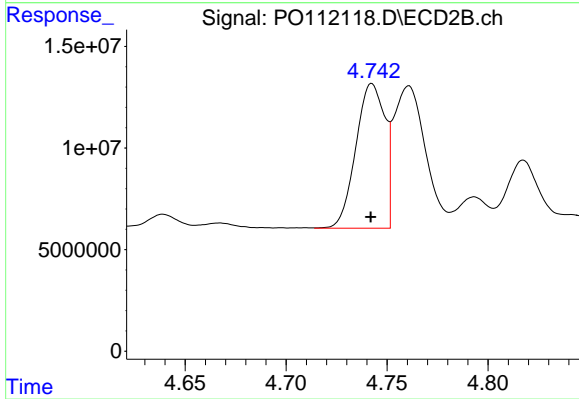
#15 AR-1232-5

R.T.: 5.191 min
 Delta R.T.: 0.000 min
 Response: 121018109
 Conc: 1629.66 ng/ml



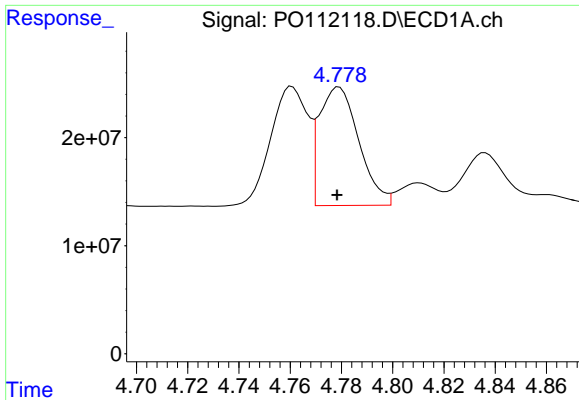
#16 AR-1242-1

R.T.: 4.761 min
 Delta R.T.: 0.001 min
 Response: 111259949
 Conc: 384.14 ng/ml



#16 AR-1242-1

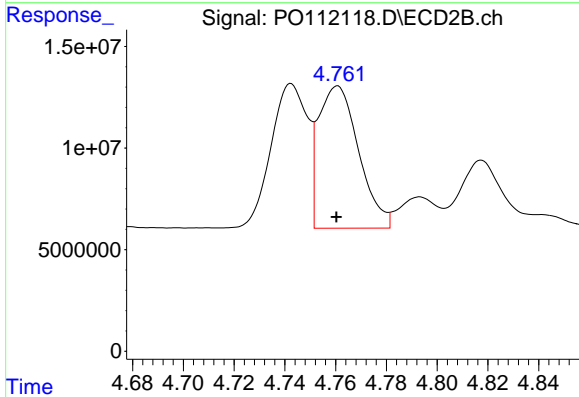
R.T.: 4.742 min
 Delta R.T.: 0.000 min
 Response: 71004811
 Conc: 366.27 ng/ml



#17 AR-1242-2

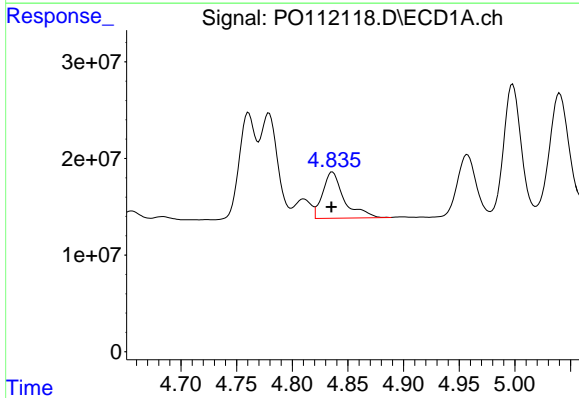
R.T.: 4.779 min
 Delta R.T.: 0.000 min
 Response: 117512227
 Conc: 275.90 ng/ml

Instrument :
 ECD_O
 ClientSampleId :
 ICVPO070825AR1248



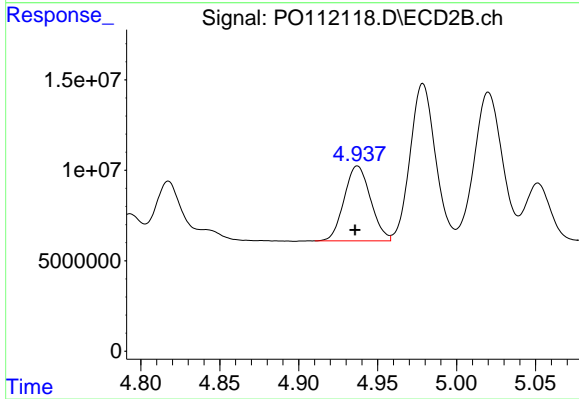
#17 AR-1242-2

R.T.: 4.761 min
 Delta R.T.: 0.000 min
 Response: 76780516
 Conc: 270.97 ng/ml



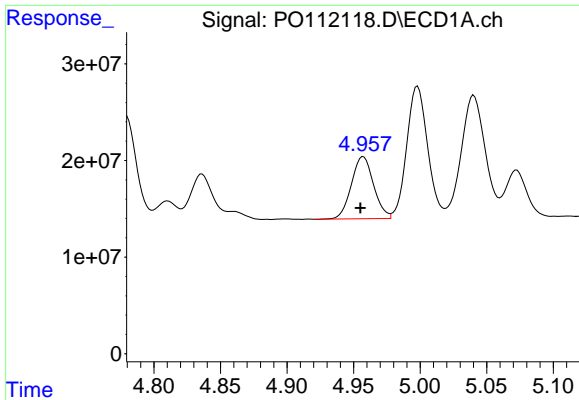
#18 AR-1242-3

R.T.: 4.836 min
 Delta R.T.: 0.000 min
 Response: 64405146
 Conc: 235.33 ng/ml



#18 AR-1242-3

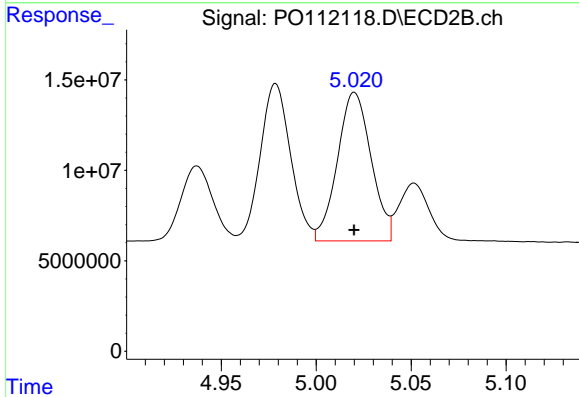
R.T.: 4.937 min
 Delta R.T.: 0.002 min
 Response: 48120118
 Conc: 330.32 ng/ml



#19 AR-1242-4

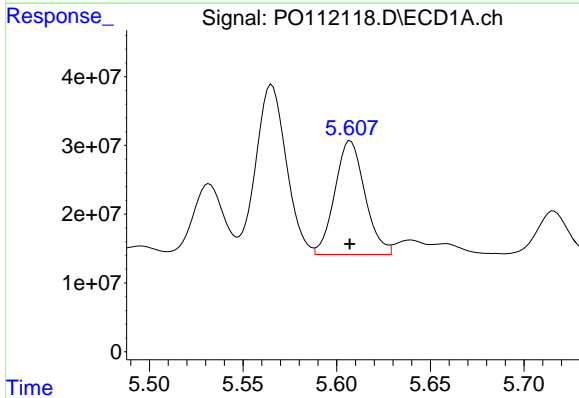
R.T.: 4.957 min
 Delta R.T.: 0.002 min
 Response: 74573031
 Conc: 330.97 ng/ml

Instrument :
 ECD_O
 ClientSampleId :
 ICVPO070825AR1248



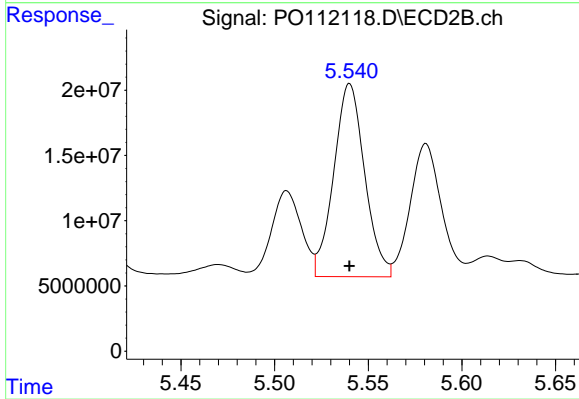
#19 AR-1242-4

R.T.: 5.020 min
 Delta R.T.: 0.000 min
 Response: 101453483
 Conc: 715.26 ng/ml



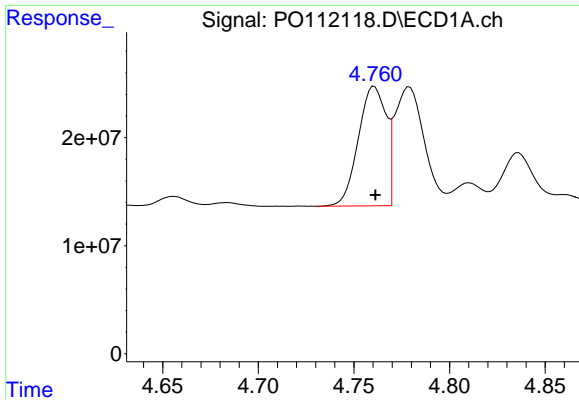
#20 AR-1242-5

R.T.: 5.607 min
 Delta R.T.: 0.000 min
 Response: 185185137
 Conc: 874.87 ng/ml



#20 AR-1242-5

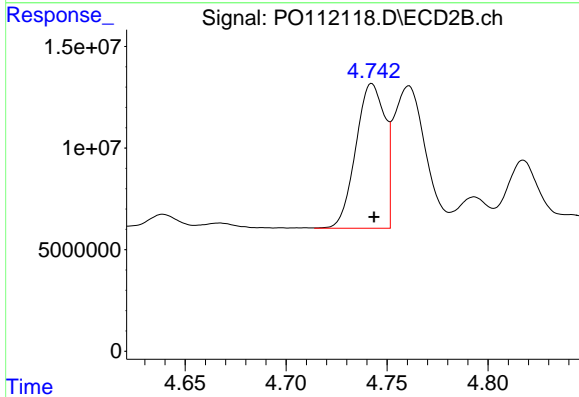
R.T.: 5.540 min
 Delta R.T.: 0.000 min
 Response: 169805425
 Conc: 934.36 ng/ml



#21 AR-1248-1

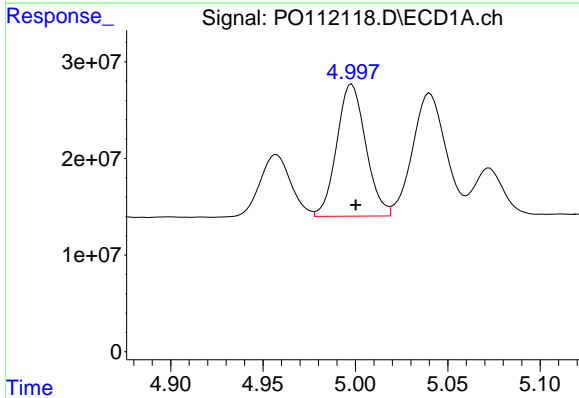
R.T.: 4.761 min
 Delta R.T.: 0.000 min
 Response: 111259949
 Conc: 490.35 ng/ml

Instrument :
 ECD_O
 ClientSampleId :
 ICVPO070825AR1248



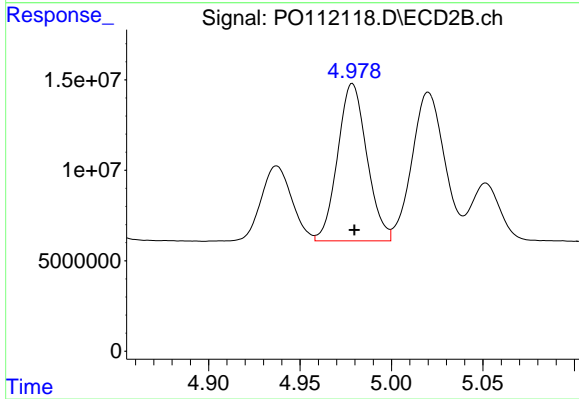
#21 AR-1248-1

R.T.: 4.742 min
 Delta R.T.: -0.001 min
 Response: 71004811
 Conc: 459.97 ng/ml



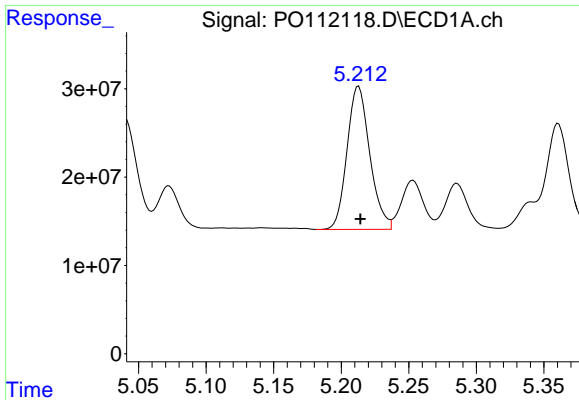
#22 AR-1248-2

R.T.: 4.998 min
 Delta R.T.: -0.002 min
 Response: 149312470
 Conc: 484.27 ng/ml



#22 AR-1248-2

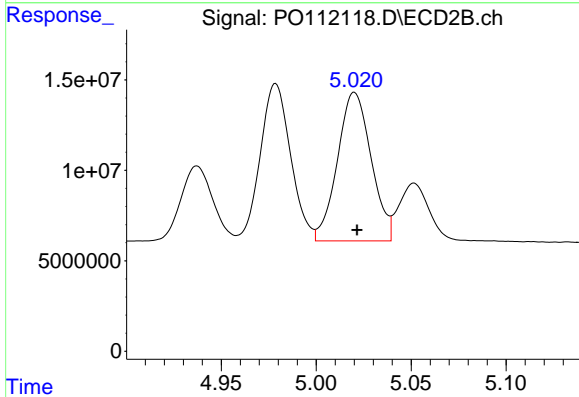
R.T.: 4.979 min
 Delta R.T.: -0.001 min
 Response: 96786968
 Conc: 470.37 ng/ml



#23 AR-1248-3

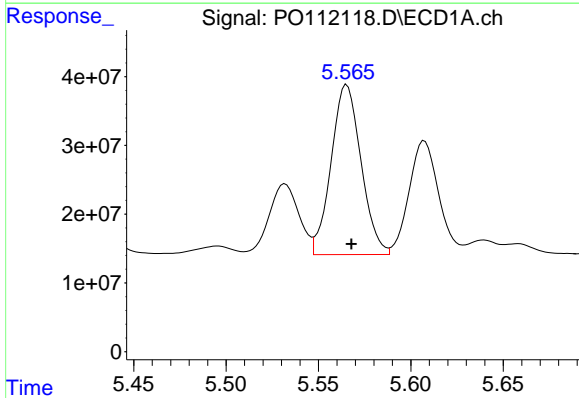
R.T.: 5.213 min
 Delta R.T.: -0.001 min
 Response: 189862604
 Conc: 466.13 ng/ml

Instrument :
 ECD_O
 ClientSampleId :
 ICVPO070825AR1248



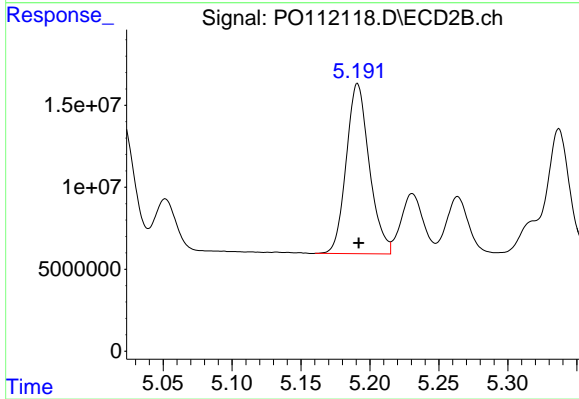
#23 AR-1248-3

R.T.: 5.020 min
 Delta R.T.: -0.001 min
 Response: 101453483
 Conc: 472.32 ng/ml



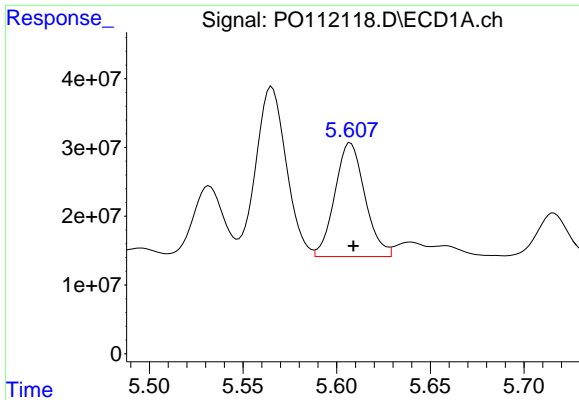
#24 AR-1248-4

R.T.: 5.565 min
 Delta R.T.: -0.002 min
 Response: 278943468
 Conc: 483.31 ng/ml



#24 AR-1248-4

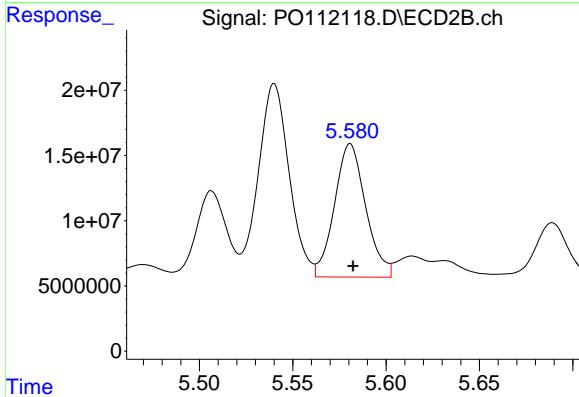
R.T.: 5.191 min
 Delta R.T.: 0.000 min
 Response: 121018109
 Conc: 467.74 ng/ml



#25 AR-1248-5

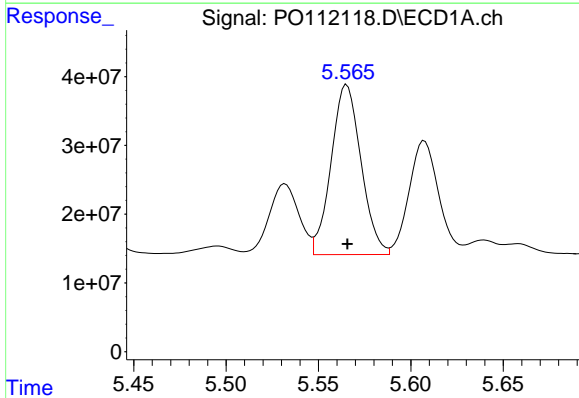
R.T.: 5.607 min
 Delta R.T.: -0.002 min
 Response: 185185137
 Conc: 474.46 ng/ml

Instrument :
 ECD_O
 ClientSampleId :
 ICVPO070825AR1248



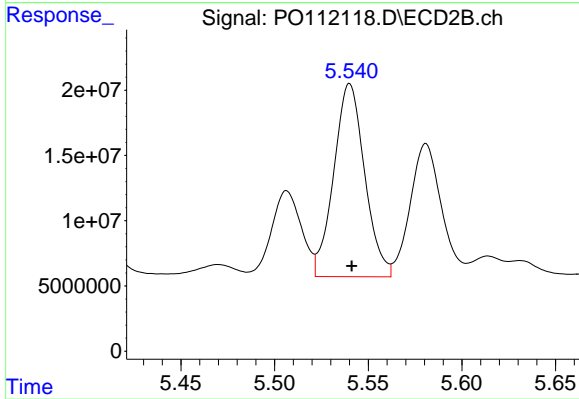
#25 AR-1248-5

R.T.: 5.581 min
 Delta R.T.: -0.001 min
 Response: 118913676
 Conc: 474.61 ng/ml



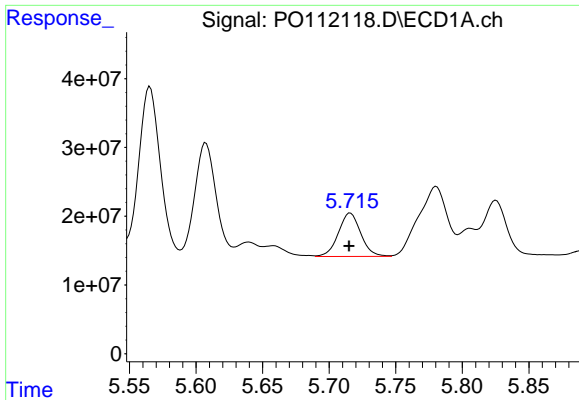
#26 AR-1254-1

R.T.: 5.565 min
 Delta R.T.: 0.000 min
 Response: 278943468
 Conc: 453.48 ng/ml



#26 AR-1254-1

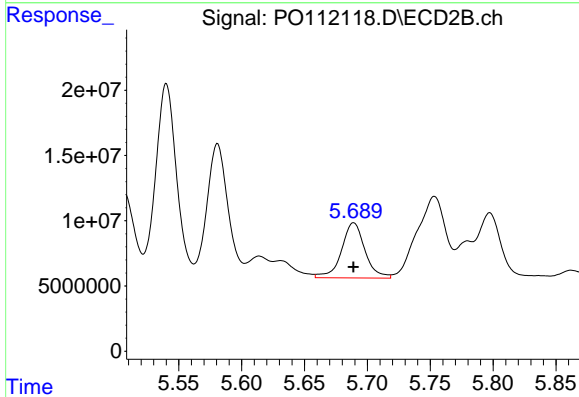
R.T.: 5.540 min
 Delta R.T.: -0.001 min
 Response: 169805425
 Conc: 445.49 ng/ml



#27 AR-1254-2

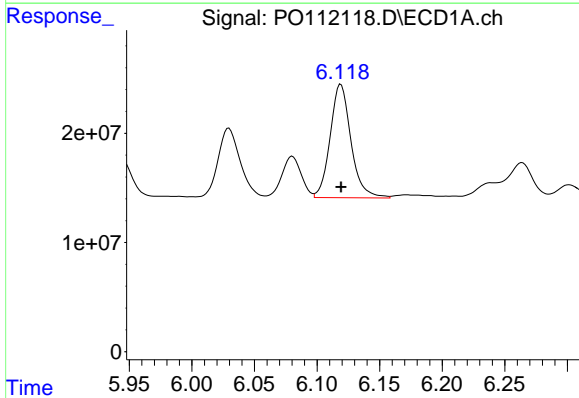
R.T.: 5.716 min
 Delta R.T.: 0.001 min
 Response: 74048024
 Conc: 138.23 ng/ml

Instrument :
 ECD_O
 ClientSampleId :
 ICVPO070825AR1248



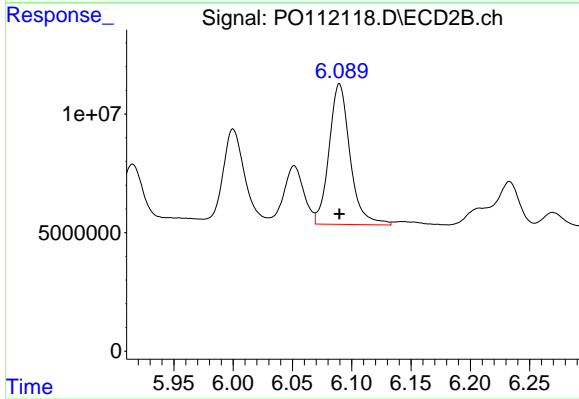
#27 AR-1254-2

R.T.: 5.689 min
 Delta R.T.: 0.000 min
 Response: 54975268
 Conc: 165.68 ng/ml



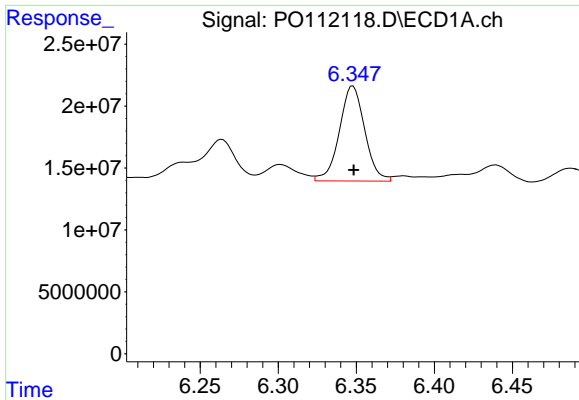
#28 AR-1254-3

R.T.: 6.119 min
 Delta R.T.: 0.000 min
 Response: 120347632
 Conc: 143.34 ng/ml



#28 AR-1254-3

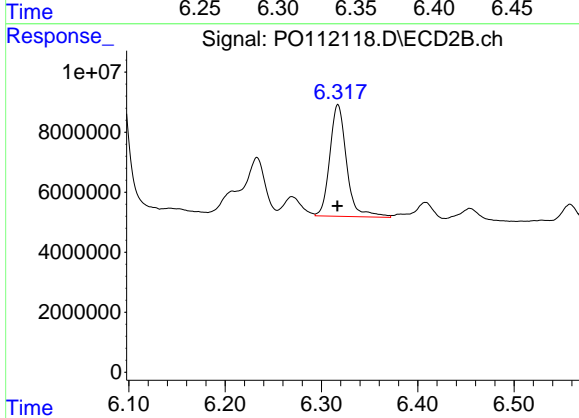
R.T.: 6.090 min
 Delta R.T.: 0.000 min
 Response: 73016318
 Conc: 151.47 ng/ml



#29 AR-1254-4

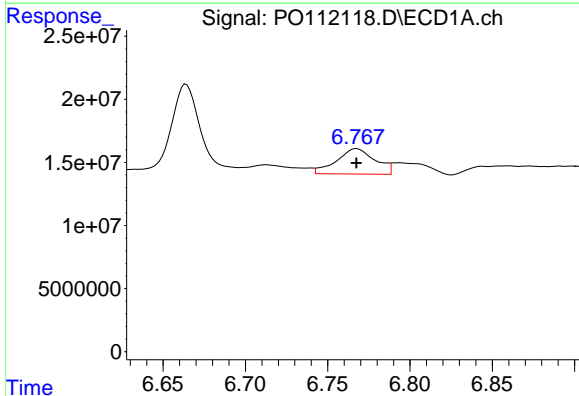
R.T.: 6.348 min
Delta R.T.: 0.000 min
Response: 86758729
Conc: 180.36 ng/ml

Instrument :
ECD_O
ClientSampleId :
ICVPO070825AR1248



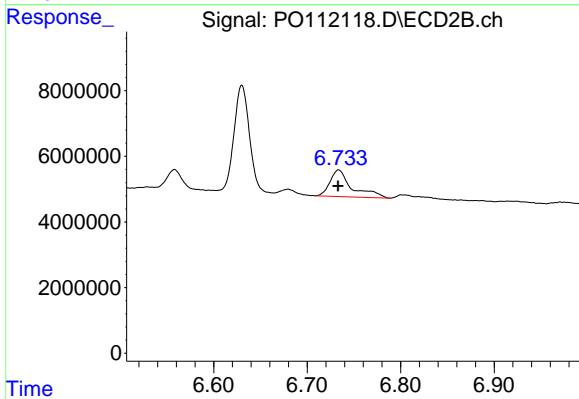
#29 AR-1254-4

R.T.: 6.317 min
Delta R.T.: 0.000 min
Response: 45140043
Conc: 173.15 ng/ml



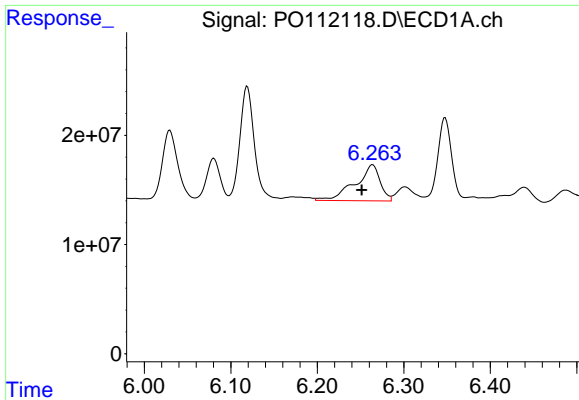
#30 AR-1254-5

R.T.: 6.768 min
Delta R.T.: 0.000 min
Response: 32913872
Conc: 42.53 ng/ml



#30 AR-1254-5

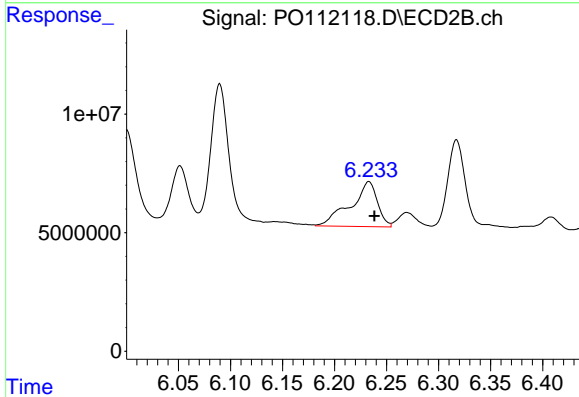
R.T.: 6.734 min
Delta R.T.: 0.000 min
Response: 13109293
Conc: 36.79 ng/ml



#31 AR-1260-1

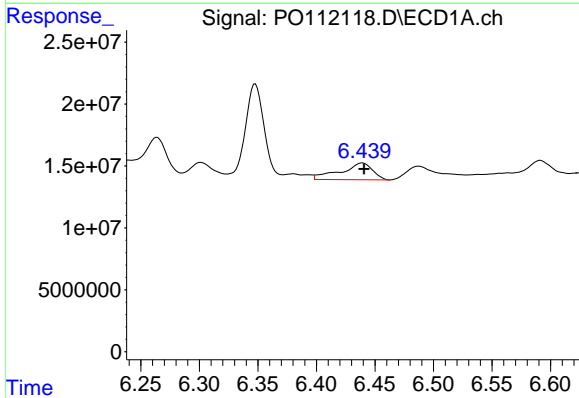
R.T.: 6.264 min
 Delta R.T.: 0.012 min
 Response: 65674541
 Conc: 131.02 ng/ml

Instrument :
 ECD_O
 ClientSampleId :
 ICVPO070825AR1248



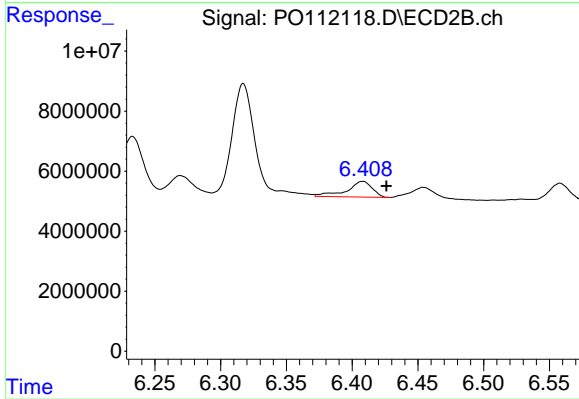
#31 AR-1260-1

R.T.: 6.233 min
 Delta R.T.: -0.005 min
 Response: 34122980
 Conc: 121.62 ng/ml



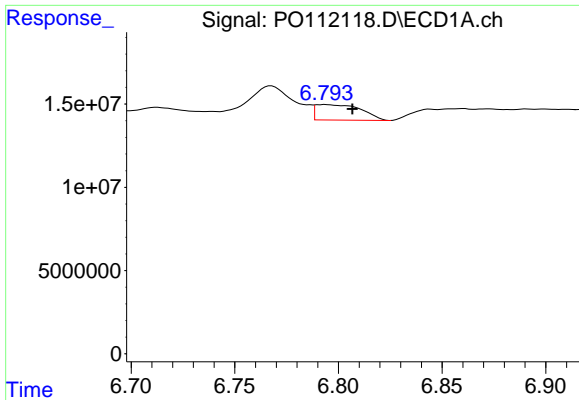
#32 AR-1260-2

R.T.: 6.439 min
 Delta R.T.: -0.002 min
 Response: 25708998
 Conc: 34.83 ng/ml



#32 AR-1260-2

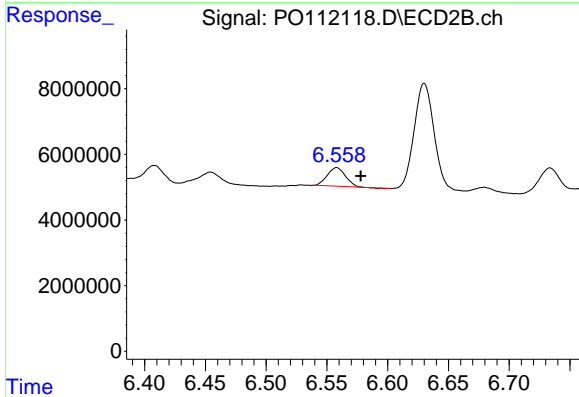
R.T.: 6.408 min
 Delta R.T.: -0.018 min
 Response: 6984747
 Conc: 20.54 ng/ml



#33 AR-1260-3

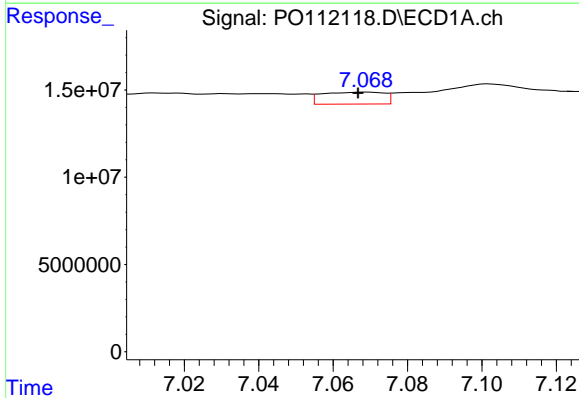
R.T.: 6.794 min
 Delta R.T.: -0.013 min
 Response: 14199472
 Conc: 21.66 ng/ml

Instrument :
 ECD_O
 ClientSampleId :
 ICVPO070825AR1248



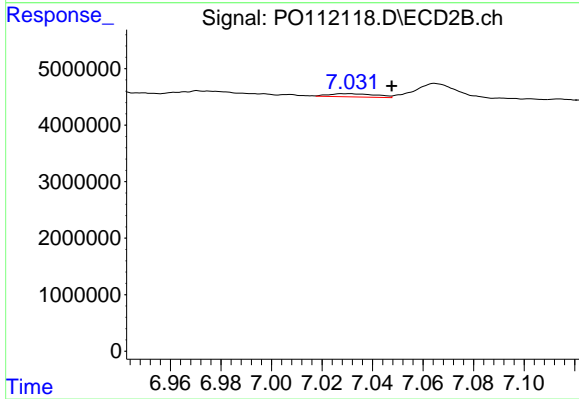
#33 AR-1260-3

R.T.: 6.558 min
 Delta R.T.: -0.020 min
 Response: 5849106
 Conc: 21.22 ng/ml



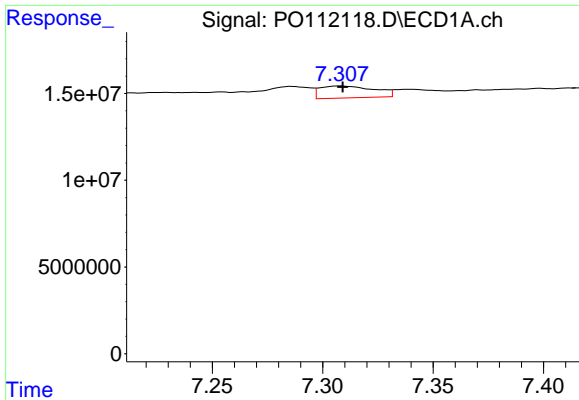
#34 AR-1260-4

R.T.: 7.069 min
 Delta R.T.: 0.002 min
 Response: 7926857
 Conc: 18.21 ng/ml



#34 AR-1260-4

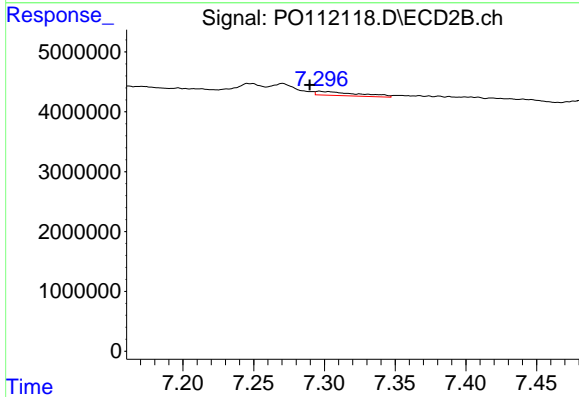
R.T.: 7.030 min
 Delta R.T.: -0.017 min
 Response: 729782
 Conc: 3.64 ng/ml



#35 AR-1260-5

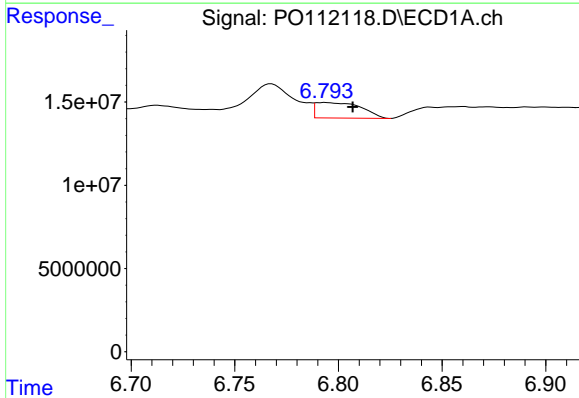
R.T.: 7.308 min
 Delta R.T.: 0.000 min
 Response: 11821278
 Conc: 9.36 ng/ml

Instrument :
 ECD_O
 ClientSampleId :
 ICVPO070825AR1248



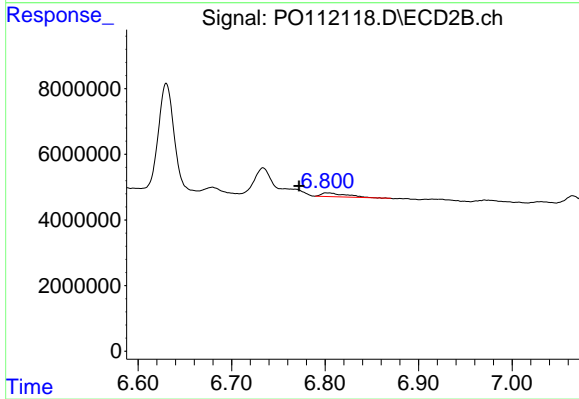
#35 AR-1260-5

R.T.: 7.296 min
 Delta R.T.: 0.007 min
 Response: 1366956
 Conc: 3.05 ng/ml



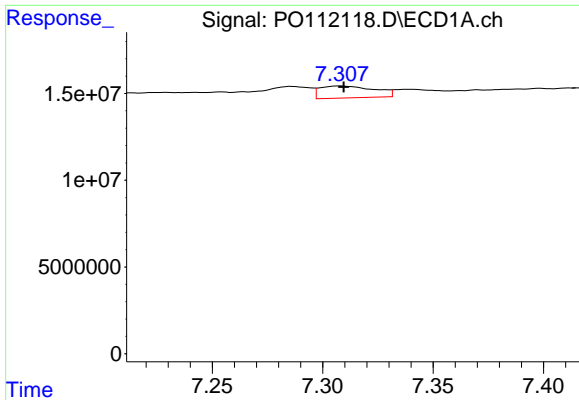
#36 AR-1262-1

R.T.: 6.794 min
 Delta R.T.: -0.013 min
 Response: 14199472
 Conc: 13.90 ng/ml



#36 AR-1262-1

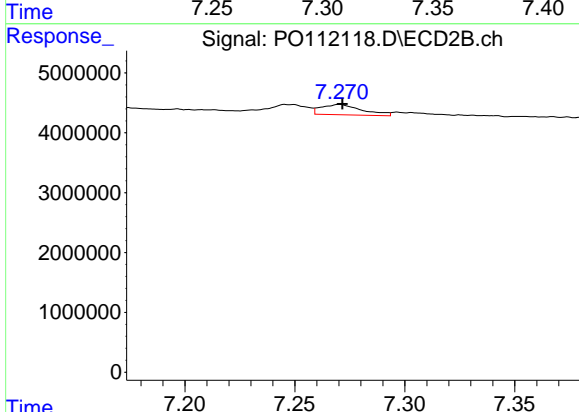
R.T.: 6.801 min
 Delta R.T.: 0.029 min
 Response: 2011096
 Conc: 4.94 ng/ml



#37 AR-1262-2

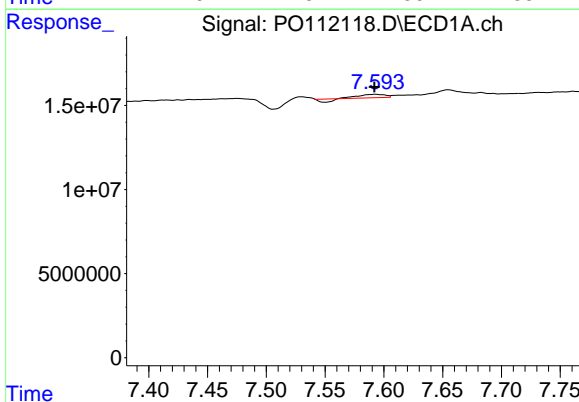
R.T.: 7.308 min
 Delta R.T.: -0.002 min
 Response: 11821278
 Conc: 7.21 ng/ml

Instrument :
 ECD_O
 ClientSampleId :
 ICVPO070825AR1248



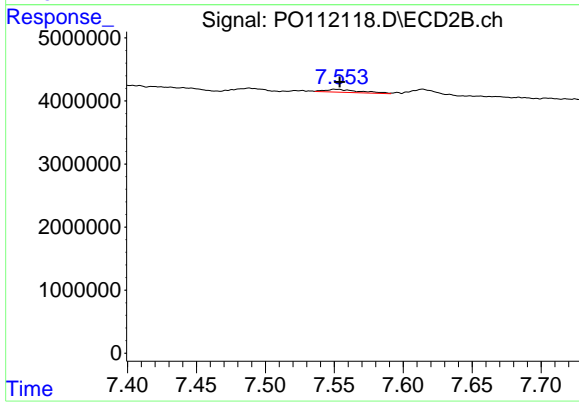
#37 AR-1262-2

R.T.: 7.270 min
 Delta R.T.: -0.001 min
 Response: 2210842
 Conc: 4.31 ng/ml



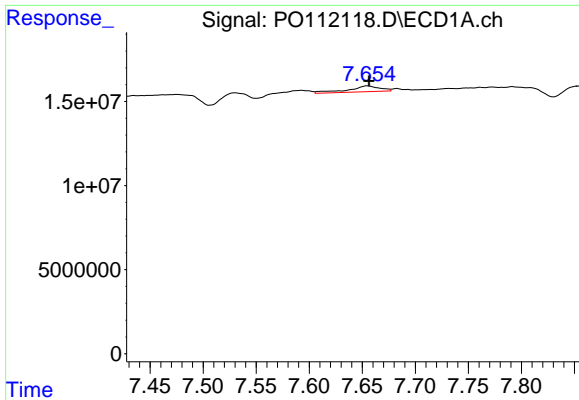
#38 AR-1262-3

R.T.: 7.593 min
 Delta R.T.: 0.001 min
 Response: 2266197
 Conc: 3.53 ng/ml



#38 AR-1262-3

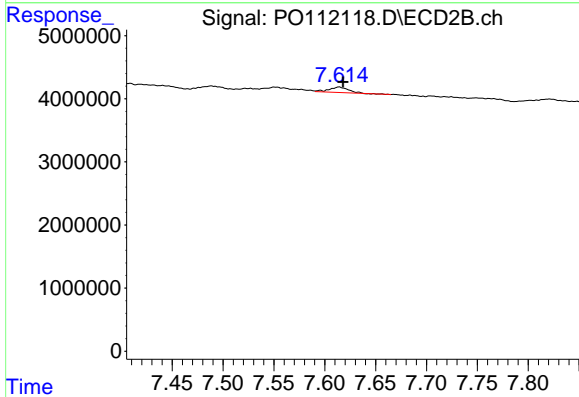
R.T.: 7.551 min
 Delta R.T.: -0.003 min
 Response: 838780
 Conc: 4.67 ng/ml



#39 AR-1262-4

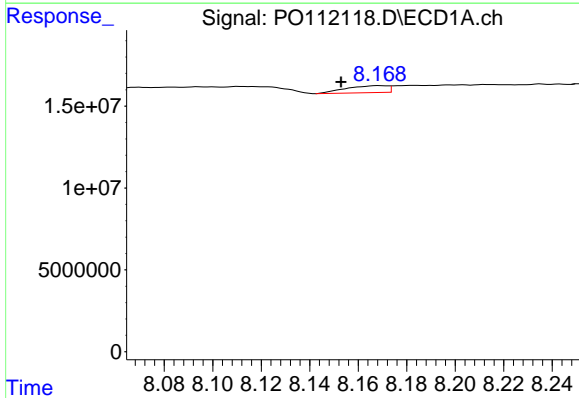
R.T.: 7.655 min
 Delta R.T.: -0.002 min
 Response: 7247861
 Conc: 6.76 ng/ml

Instrument :
 ECD_O
 ClientSampleId :
 ICVPO070825AR1248



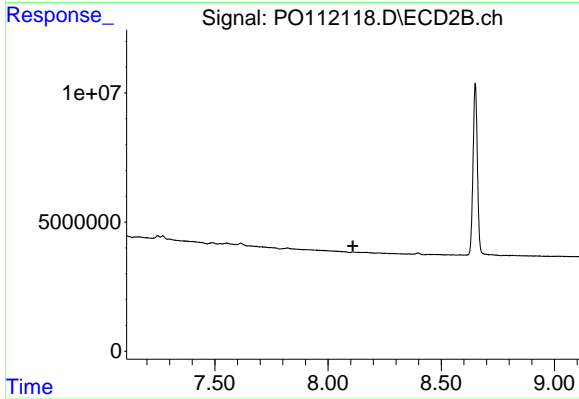
#39 AR-1262-4

R.T.: 7.614 min
 Delta R.T.: -0.004 min
 Response: 1116363
 Conc: 3.84 ng/ml



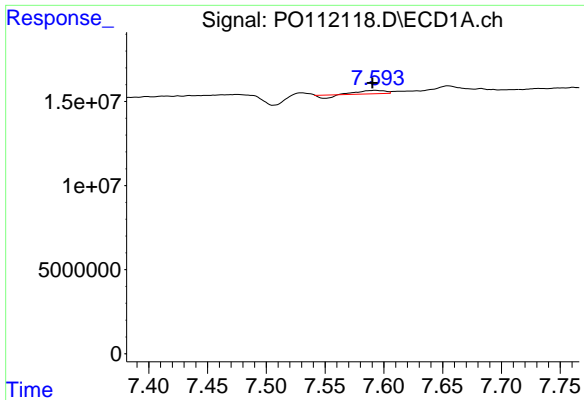
#40 AR-1262-5

R.T.: 8.169 min
 Delta R.T.: 0.016 min
 Response: 5058453
 Conc: 11.29 ng/ml



#40 AR-1262-5

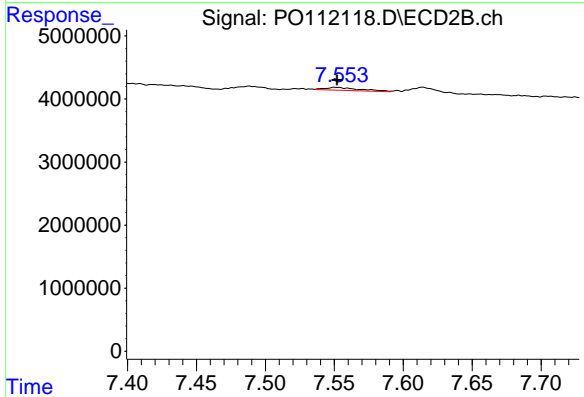
R.T.: 8.109 min
 Delta R.T.: 0.000 min
 Response: -76447
 Conc: N.D.



#41 AR-1268-1

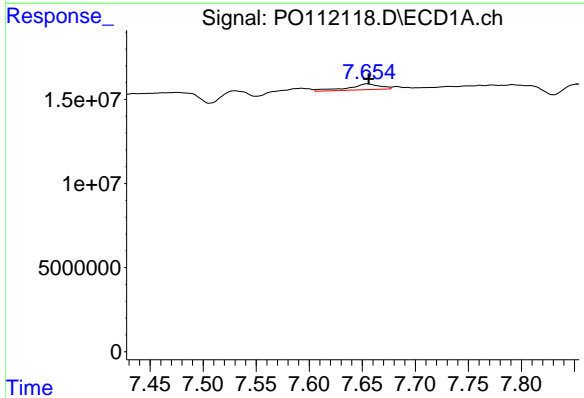
R.T.: 7.593 min
 Delta R.T.: 0.003 min
 Response: 2266197
 Conc: 1.23 ng/ml

Instrument :
 ECD_O
 ClientSampleId :
 ICVPO070825AR1248



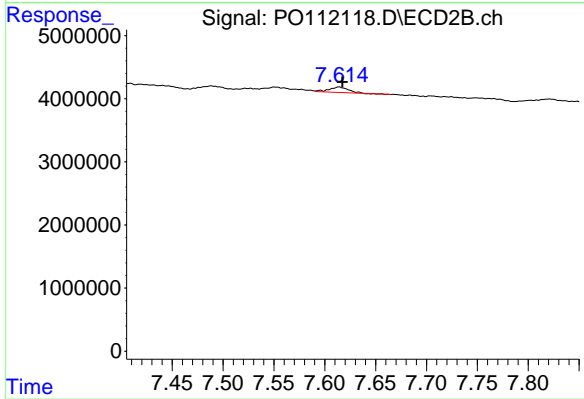
#41 AR-1268-1

R.T.: 7.551 min
 Delta R.T.: -0.001 min
 Response: 838780
 Conc: 1.71 ng/ml



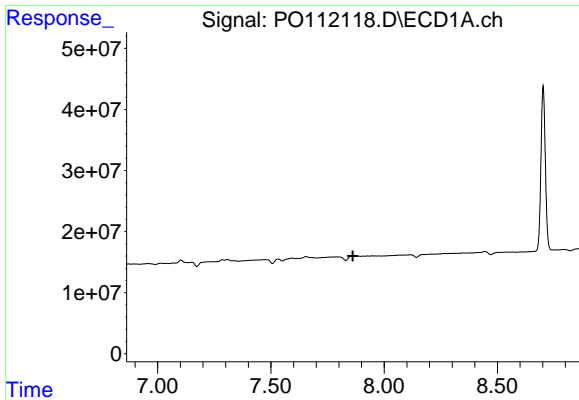
#42 AR-1268-2

R.T.: 7.655 min
 Delta R.T.: -0.001 min
 Response: 7247861
 Conc: 4.65 ng/ml



#42 AR-1268-2

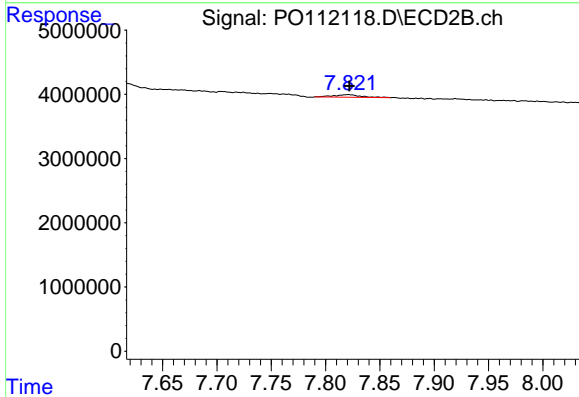
R.T.: 7.614 min
 Delta R.T.: -0.003 min
 Response: 1116363
 Conc: 2.68 ng/ml



#43 AR-1268-3

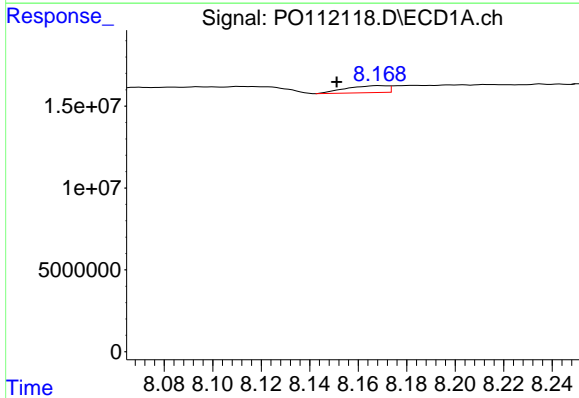
R.T.: 7.860 min
 Delta R.T.: -0.001 min
 Response: -2786880
 Conc: N.D.

Instrument :
 ECD_O
 ClientSampleId :
 ICVPO070825AR1248



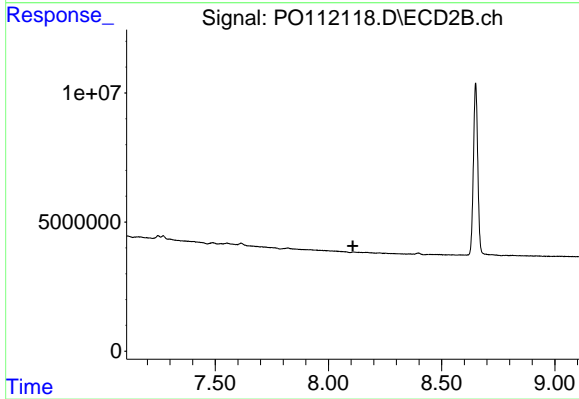
#43 AR-1268-3

R.T.: 7.821 min
 Delta R.T.: -0.001 min
 Response: 684596
 Conc: 2.16 ng/ml



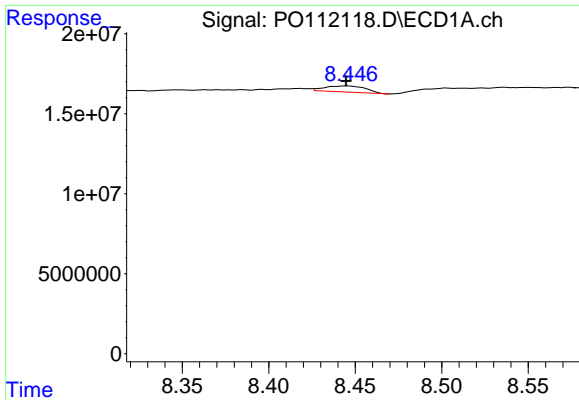
#44 AR-1268-4

R.T.: 8.169 min
 Delta R.T.: 0.018 min
 Response: 5058453
 Conc: 10.53 ng/ml



#44 AR-1268-4

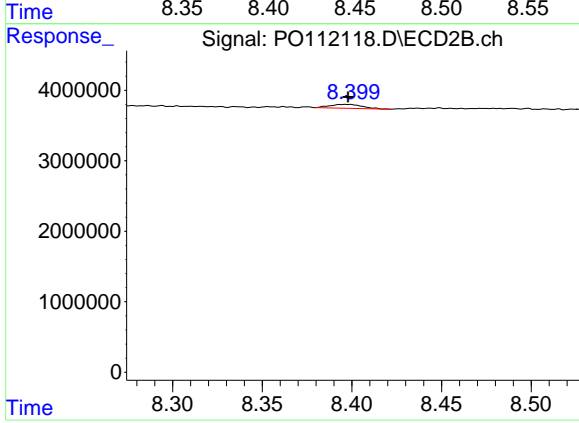
R.T.: 8.109 min
 Delta R.T.: 0.000 min
 Response: -76447
 Conc: N.D.



#45 AR-1268-5

R.T.: 8.445 min
 Delta R.T.: 0.000 min
 Response: 6117965
 Conc: 1.87 ng/ml

Instrument : ECD_O
 ClientSampleId : ICVPO070825AR1248



#45 AR-1268-5

R.T.: 8.398 min
 Delta R.T.: 0.000 min
 Response: 689628
 Conc: 0.95 ng/ml