

Data Path : Z:\pestpcbsrv\HPCHEM1\ECD_0\Data\P0070825\
 Data File : PO112119.D
 Signal(s) : Signal #1: ECD1A.ch Signal #2: ECD2B.ch
 Acq On : 09 Jul 2025 00:24
 Operator : YP/AJ
 Sample : AR1254ICV500
 Misc :
 ALS Vial : 34 Sample Multiplier: 1

Instrument :
 ECD_0
 ClientSampleId :
 ICVPO070825AR1254

Integration File signal 1: autoint1.e
 Integration File signal 2: autoint2.e
 Quant Time: Jul 09 04:05:39 2025
 Quant Method : Z:\pestpcbsrv\HPCHEM1\ECD_0\methods\P0070825.M
 Quant Title : GC EXTRACTABLES
 QLast Update : Wed Jul 09 04:02:23 2025
 Response via : Initial Calibration
 Integrator: ChemStation

Volume Inj. : 2 µl
 Signal #1 Phase : ZB-MR2 Signal #2 Phase: ZB-MR2
 Signal #1 Info : 30Mx0.32mmx 0.50µ Signal #2 Info : 30M x 0.32mm x 0.25µm

Compound	RT#1	RT#2	Resp#1	Resp#2	ng/ml	ng/ml
System Monitoring Compounds						
1) SA Tetrachlo...	3.673	3.666	520.2E6	322.7E6	52.569	50.649
2) SA Decachlor...	8.702	8.648	368.3E6	89811642	53.866	52.111
Target Compounds						
3) L1 AR-1016-1	4.761	4.759	4787862	3345268	14.077	15.012
4) L1 AR-1016-2	4.779	4.791	3652699	2120544	7.345	6.444
5) L1 AR-1016-3	4.837	4.935	3373373	1919058	10.421	11.297
6) L1 AR-1016-4	4.957	4.978	2870637	74498602	11.179	542.884 #
7) L1 AR-1016-5	5.212	5.190	73304723	46924816	267.866	272.106
8) L2 AR-1221-1	3.902	3.874	2534917	187714	21.738	2.281 #
9) L2 AR-1221-2	3.974	3.964	6093947	4870033	77.295	82.051
10) L2 AR-1221-3	4.047	4.035	843366	1019006	3.128	5.398 #
11) L3 AR-1232-1	4.047	4.035	843366	1019006	3.929	6.789 #
12) L3 AR-1232-2	4.537	4.759	3649045	3345268	32.111	21.852 #
13) L3 AR-1232-3	4.779	4.935	3652699	1919058	15.950	25.416 #
14) L3 AR-1232-4	4.957	5.019	2870637	22173199	25.116	336.018 #
15) L3 AR-1232-5	4.998	5.190	113.8E6	46924816	1550.545	631.900 #
16) L4 AR-1242-1	4.761	4.742	4787862	4519478	16.531	23.313 #
17) L4 AR-1242-2	4.779	4.759	3652699	3345268	8.576	11.806 #
18) L4 AR-1242-3	4.837	4.935	3373373	1919058	12.326	13.173
19) L4 AR-1242-4	4.957	5.019	2870637	22173199	12.740	156.325 #
20) L4 AR-1242-5	5.607	5.541	31573455	181.0E6	149.163	996.135 #
21) L5 AR-1248-1	4.761	4.742	4787862	4519478	21.101	29.277 #
22) L5 AR-1248-2	4.998	4.978	113.8E6	74498602	369.124	362.052
23) L5 AR-1248-3	5.212	5.019	73304723	22173199	179.968	103.228 #
24) L5 AR-1248-4	5.566	5.190	297.8E6	46924816	515.984	181.368 #
25) L5 AR-1248-5	5.607	5.581	31573455	23348583	80.894	93.190
26) L6 AR-1254-1	5.566	5.541	297.8E6	181.0E6	484.137	474.939
27) L6 AR-1254-2	5.715	5.688	261.9E6	156.8E6	488.891	472.651
28) L6 AR-1254-3	6.119	6.089	408.1E6	227.3E6	486.021	471.452
29) L6 AR-1254-4	6.348	6.317	268.6E6	129.6E6	558.360	496.987
30) L6 AR-1254-5	6.768	6.733	381.5E6	170.5E6	492.940	478.367
31) L7 AR-1260-1	6.251	6.220	185.5E6	105.1E6	370.145	374.555
32) L7 AR-1260-2	6.440	6.408	184.1E6	84447586	249.473	248.378
33) L7 AR-1260-3	6.838	6.558	24914935	69411944	38.010	251.870 #
34) L7 AR-1260-4	7.066	7.065	15559510	36429024	35.749	181.560 #
35) L7 AR-1260-5	7.308	7.301	47138384	4860559	37.336	10.856 #
36) L8 AR-1262-1	6.838	6.802	24914935	13741876	24.386	33.737 #
37) L8 AR-1262-2	7.308	7.270	47138384	16747621	28.754	32.675
38) L8 AR-1262-3	7.597	7.552	6084391	959403	9.478	5.344 #
39) L8 AR-1262-4	7.653	7.613	43701194	11851214	40.788	40.737
40) L8 AR-1262-5	8.156	8.107	3119028	395740	6.960	3.741 #
41) L9 AR-1268-1	7.597	7.552	6084391	959403	3.311	1.952 #

Data Path : Z:\pestpcbsrv\HPCHEM1\ECD_0\Data\P0070825\
 Data File : P0112119.D
 Signal(s) : Signal #1: ECD1A.ch Signal #2: ECD2B.ch
 Acq On : 09 Jul 2025 00:24
 Operator : YP/AJ
 Sample : AR1254ICV500
 Misc :
 ALS Vial : 34 Sample Multiplier: 1

Instrument :
 ECD_0
 ClientSampleId :
 ICVPO070825AR1254

Integration File signal 1: autoint1.e
 Integration File signal 2: autoint2.e
 Quant Time: Jul 09 04:05:39 2025
 Quant Method : Z:\pestpcbsrv\HPCHEM1\ECD_0\methods\P0070825.M
 Quant Title : GC EXTRACTABLES
 QLast Update : Wed Jul 09 04:02:23 2025
 Response via : Initial Calibration
 Integrator: ChemStation

Volume Inj. : 2 µl
 Signal #1 Phase : ZB-MR1 Signal #2 Phase: ZB-MR2
 Signal #1 Info : 30Mx0.32mmx 0.50µ Signal #2 Info : 30M x 0.32mm x 0.25µm

	Compound	RT#1	RT#2	Resp#1	Resp#2	ng/ml	ng/ml
42)	L9 AR-1268-2	7.653	7.613	43701194	11851214	28.057	28.407
43)	L9 AR-1268-3	7.863	7.819	3633662	325092	2.796	1.028 #
44)	L9 AR-1268-4	8.156	8.107	3119028	395740	6.492	3.549 #
45)	L9 AR-1268-5	8.444	8.393	3353233	662949	1.027	0.913

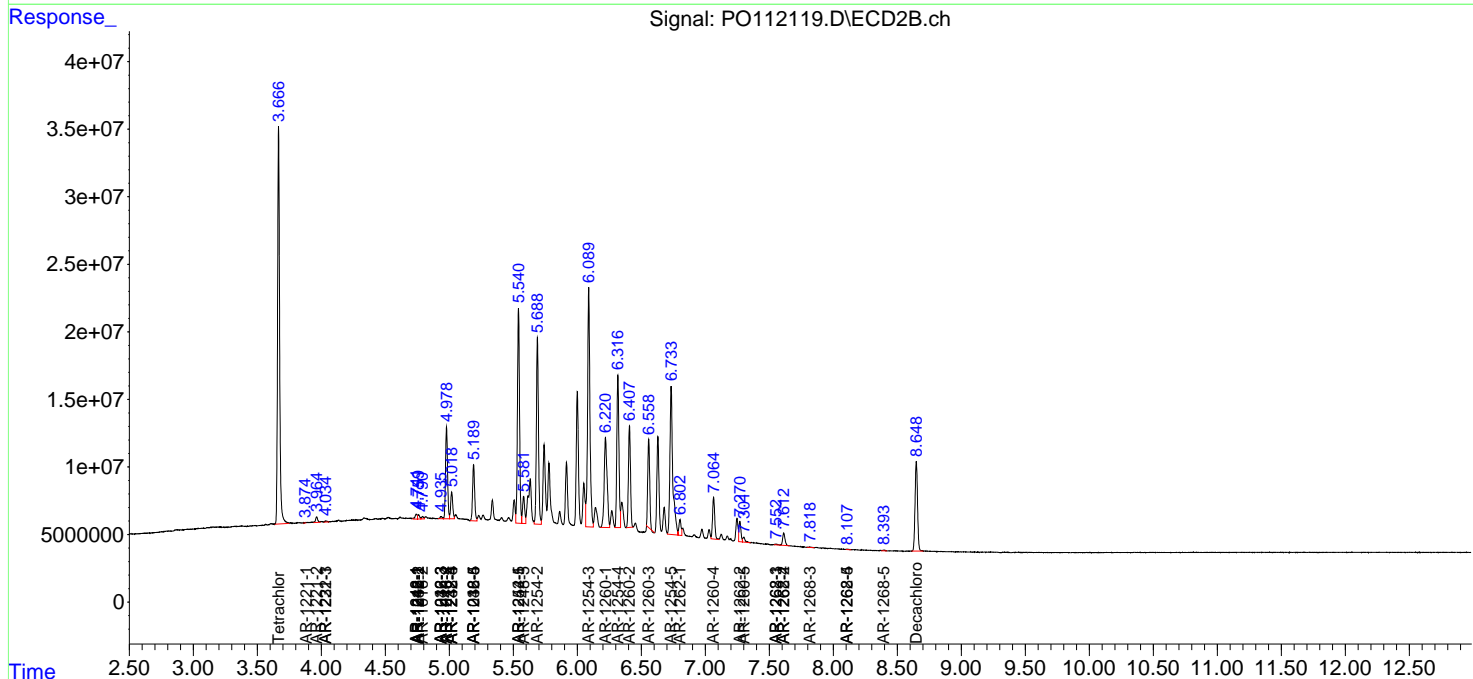
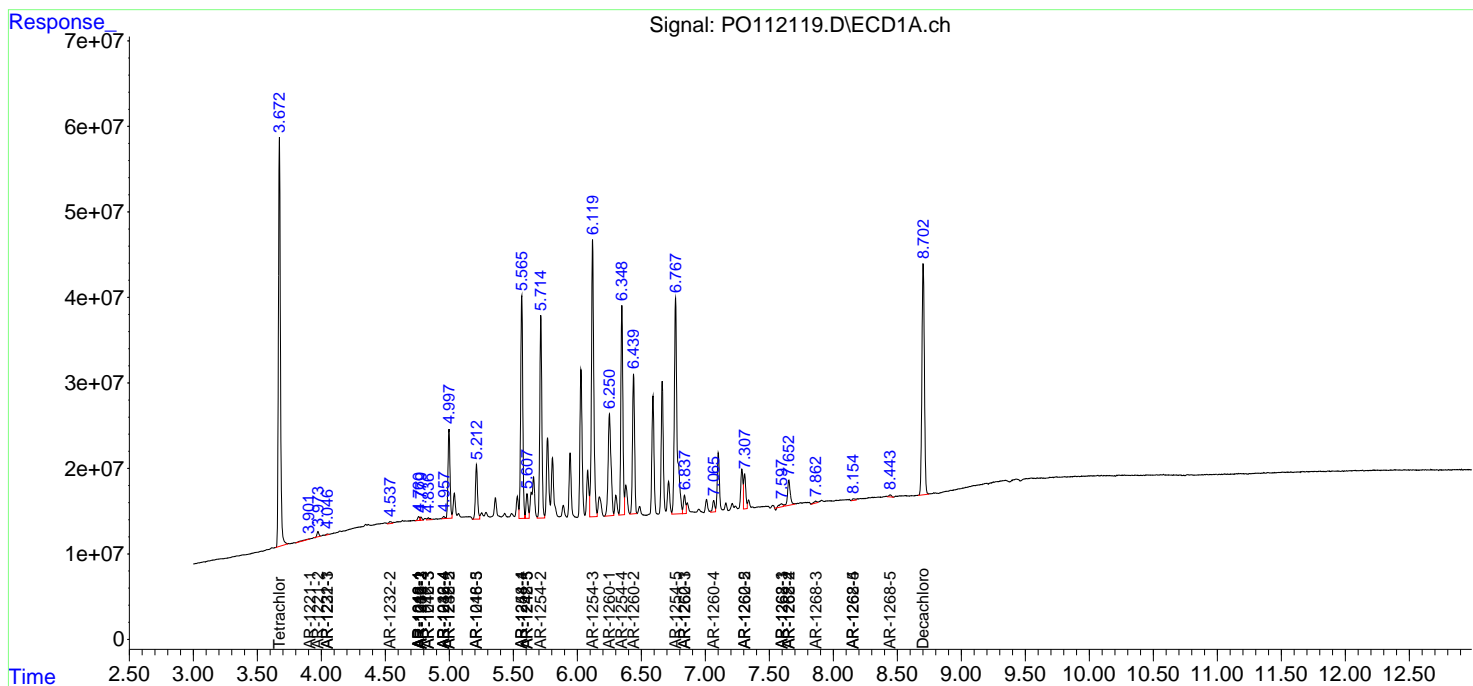
(f)=RT Delta > 1/2 Window (#)=Amounts differ by > 25% (m)=manual int.

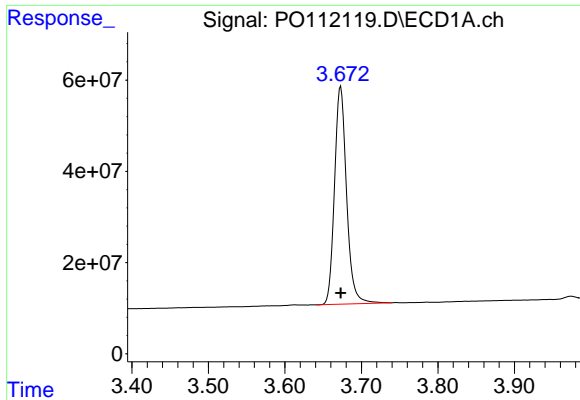
Data Path : Z:\pestpcbsrv\HPCHEM1\ECD_O\Data\PO070825\
 Data File : PO112119.D
 Signal(s) : Signal #1: ECD1A.ch Signal #2: ECD2B.ch
 Acq On : 09 Jul 2025 00:24
 Operator : YP/AJ
 Sample : AR1254ICV500
 Misc :
 ALS Vial : 34 Sample Multiplier: 1

Instrument :
 ECD_O
 ClientSampleId :
 ICVPO070825AR1254

Integration File signal 1: autoint1.e
 Integration File signal 2: autoint2.e
 Quant Time: Jul 09 04:05:39 2025
 Quant Method : Z:\pestpcbsrv\HPCHEM1\ECD_O\methods\PO070825.M
 Quant Title : GC EXTRACTABLES
 QLast Update : Wed Jul 09 04:02:23 2025
 Response via : Initial Calibration
 Integrator: ChemStation

Volume Inj. : 2 µl
 Signal #1 Phase : ZB-MR1 Signal #2 Phase: ZB-MR2
 Signal #1 Info : 30Mx0.32mmx 0.50µ Signal #2 Info : 30M x 0.32mm x 0.25µm

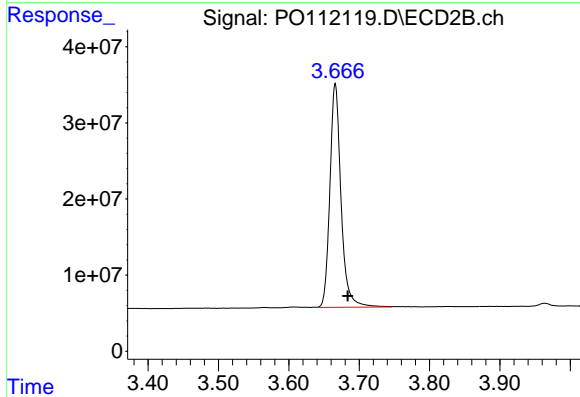




#1 Tetrachloro-m-xylene

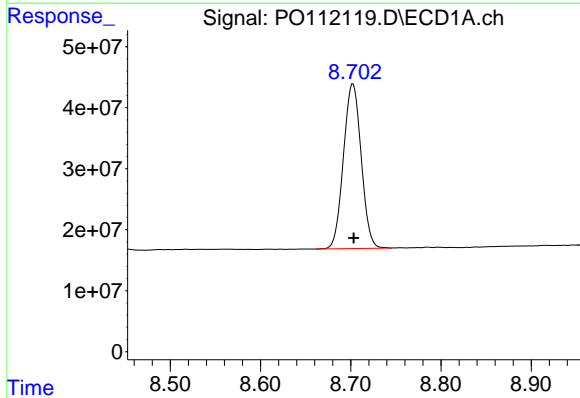
R.T.: 3.673 min
Delta R.T.: 0.000 min
Response: 520156758
Conc: 52.57 ng/ml

Instrument :
ECD_O
ClientSampleId :
ICVPO070825AR1254



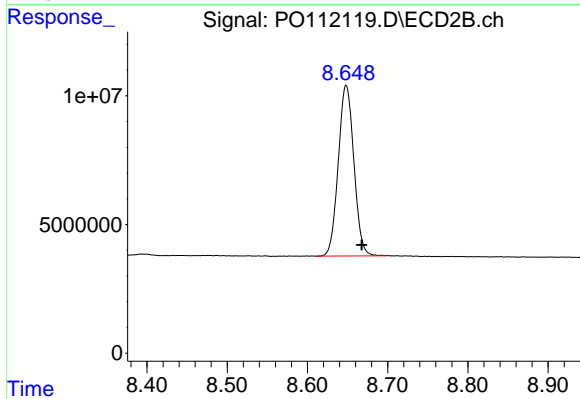
#1 Tetrachloro-m-xylene

R.T.: 3.666 min
Delta R.T.: -0.018 min
Response: 322690746
Conc: 50.65 ng/ml



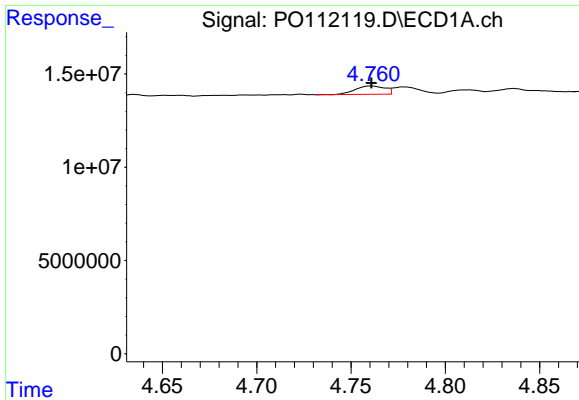
#2 Decachlorobiphenyl

R.T.: 8.702 min
Delta R.T.: 0.000 min
Response: 368283668
Conc: 53.87 ng/ml



#2 Decachlorobiphenyl

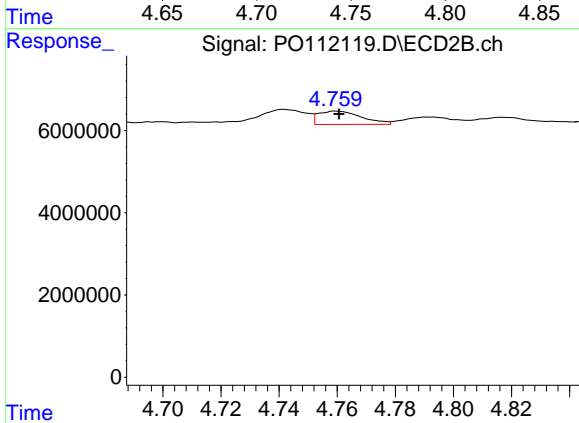
R.T.: 8.648 min
Delta R.T.: -0.020 min
Response: 89811642
Conc: 52.11 ng/ml



#3 AR-1016-1

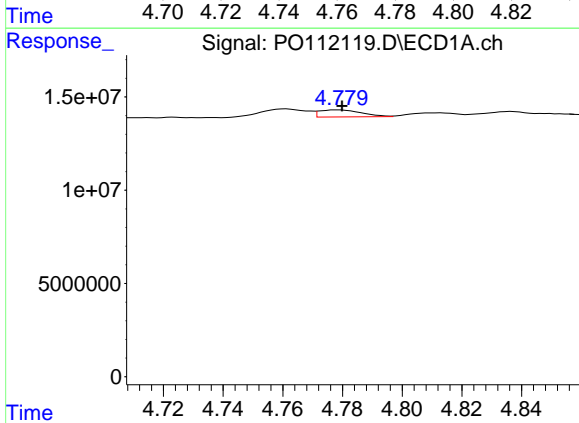
R.T.: 4.761 min
 Delta R.T.: 0.000 min
 Response: 4787862
 Conc: 14.08 ng/ml

Instrument :
 ECD_O
 ClientSampleId :
 ICVPO070825AR1254



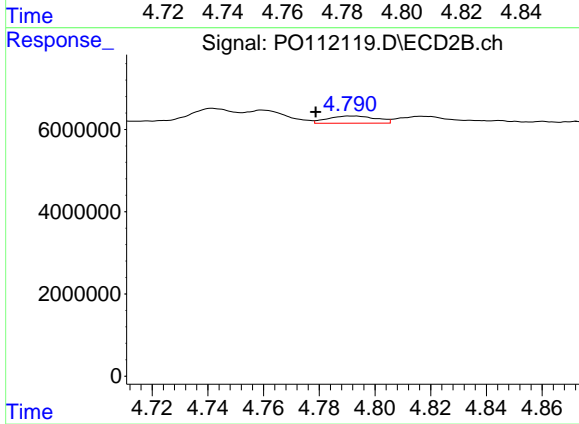
#3 AR-1016-1

R.T.: 4.759 min
 Delta R.T.: -0.001 min
 Response: 3345268
 Conc: 15.01 ng/ml



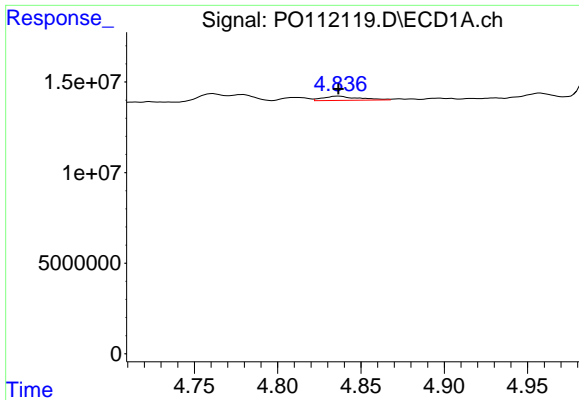
#4 AR-1016-2

R.T.: 4.779 min
 Delta R.T.: -0.001 min
 Response: 3652699
 Conc: 7.35 ng/ml



#4 AR-1016-2

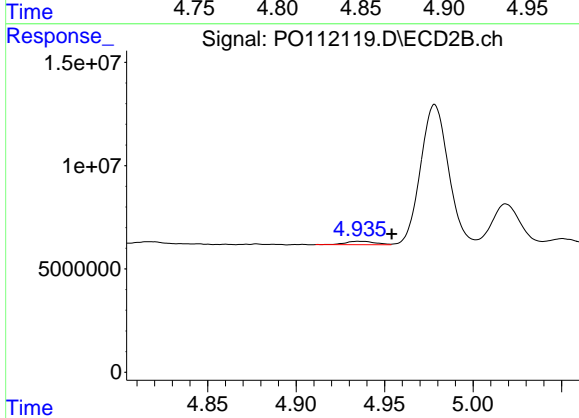
R.T.: 4.791 min
 Delta R.T.: 0.012 min
 Response: 2120544
 Conc: 6.44 ng/ml



#5 AR-1016-3

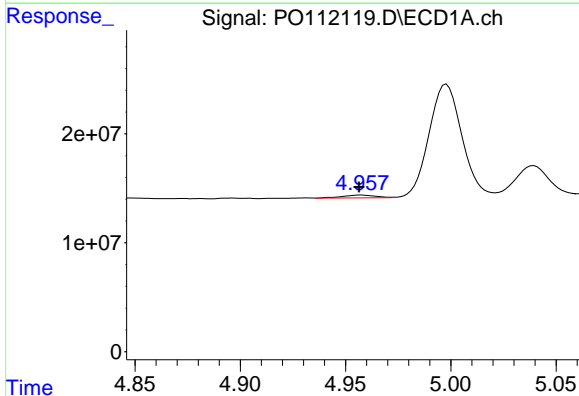
R.T.: 4.837 min
 Delta R.T.: 0.000 min
 Response: 3373373
 Conc: 10.42 ng/ml

Instrument :
 ECD_O
 ClientSampleId :
 ICVPO070825AR1254



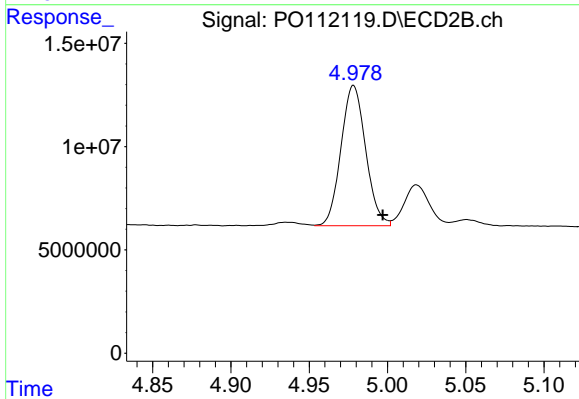
#5 AR-1016-3

R.T.: 4.935 min
 Delta R.T.: -0.019 min
 Response: 1919058
 Conc: 11.30 ng/ml



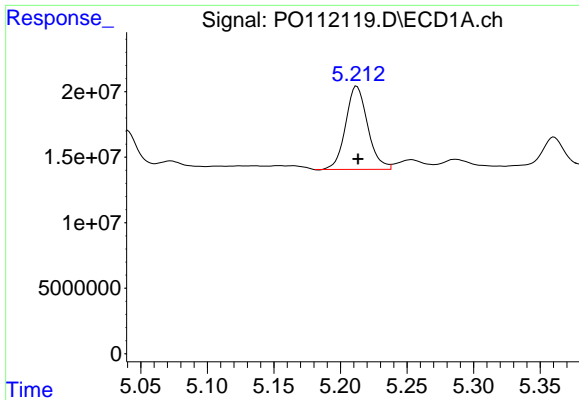
#6 AR-1016-4

R.T.: 4.957 min
 Delta R.T.: 0.000 min
 Response: 2870637
 Conc: 11.18 ng/ml



#6 AR-1016-4

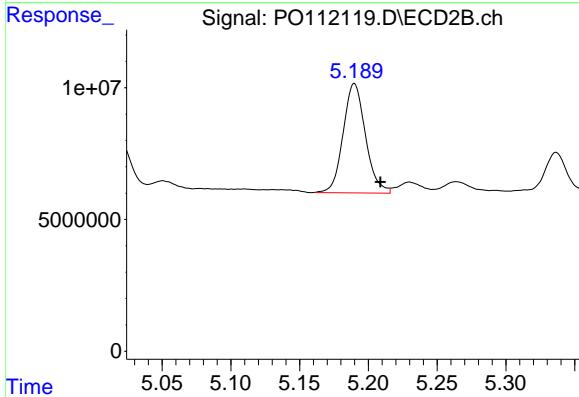
R.T.: 4.978 min
 Delta R.T.: -0.019 min
 Response: 74498602
 Conc: 542.88 ng/ml



#7 AR-1016-5

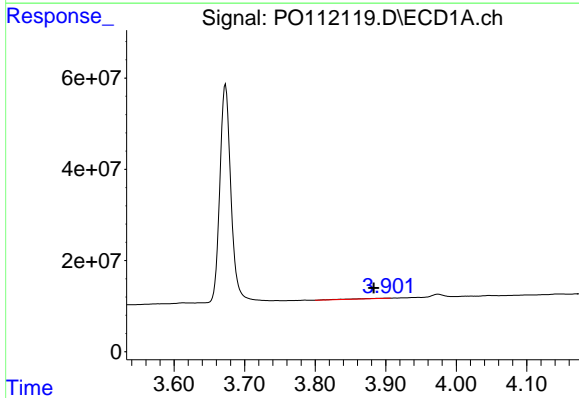
R.T.: 5.212 min
 Delta R.T.: 0.000 min
 Response: 73304723
 Conc: 267.87 ng/ml

Instrument :
 ECD_O
 ClientSampleId :
 ICVPO070825AR1254



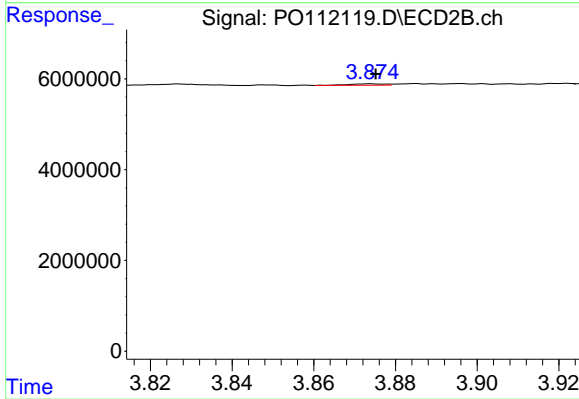
#7 AR-1016-5

R.T.: 5.190 min
 Delta R.T.: -0.019 min
 Response: 46924816
 Conc: 272.11 ng/ml



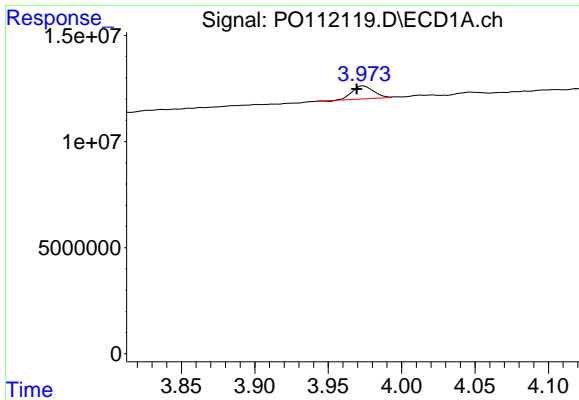
#8 AR-1221-1

R.T.: 3.902 min
 Delta R.T.: 0.019 min
 Response: 2534917
 Conc: 21.74 ng/ml



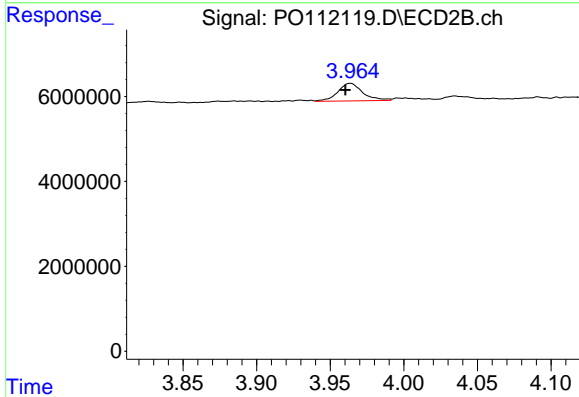
#8 AR-1221-1

R.T.: 3.874 min
 Delta R.T.: -0.001 min
 Response: 187714
 Conc: 2.28 ng/ml

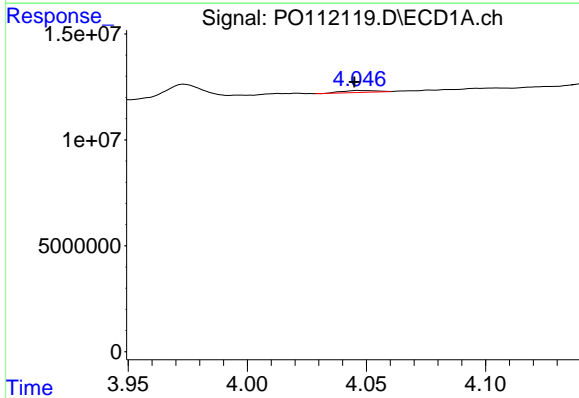


#9 AR-1221-2
 R.T.: 3.974 min
 Delta R.T.: 0.004 min
 Response: 6093947
 Conc: 77.29 ng/ml

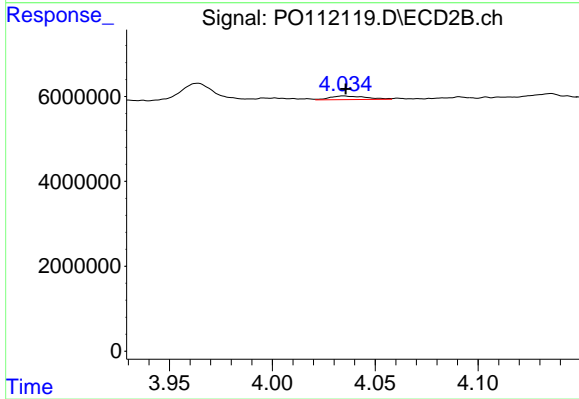
Instrument :
 ECD_O
 ClientSampleId :
 ICVPO070825AR1254



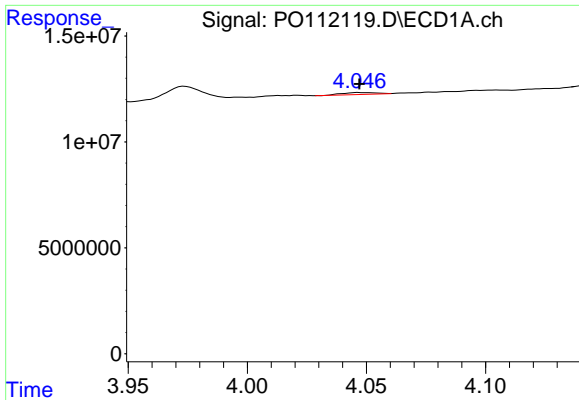
#9 AR-1221-2
 R.T.: 3.964 min
 Delta R.T.: 0.003 min
 Response: 4870033
 Conc: 82.05 ng/ml



#10 AR-1221-3
 R.T.: 4.047 min
 Delta R.T.: 0.002 min
 Response: 843366
 Conc: 3.13 ng/ml



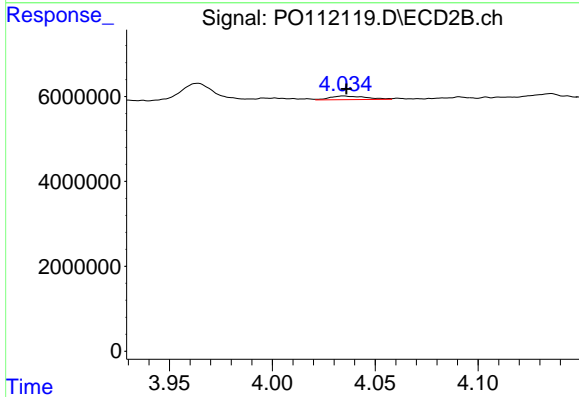
#10 AR-1221-3
 R.T.: 4.035 min
 Delta R.T.: 0.000 min
 Response: 1019006
 Conc: 5.40 ng/ml



#11 AR-1232-1

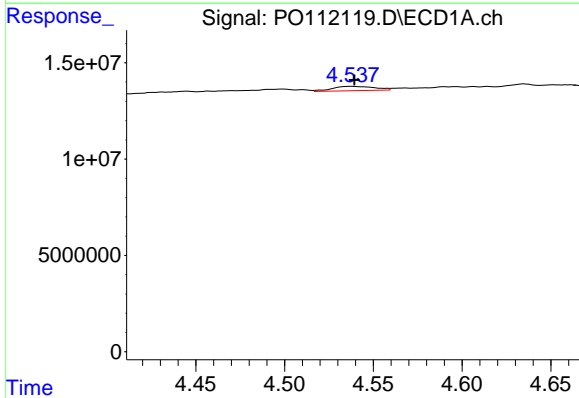
R.T.: 4.047 min
 Delta R.T.: 0.000 min
 Response: 843366
 Conc: 3.93 ng/ml

Instrument :
 ECD_O
 ClientSampleId :
 ICVPO070825AR1254



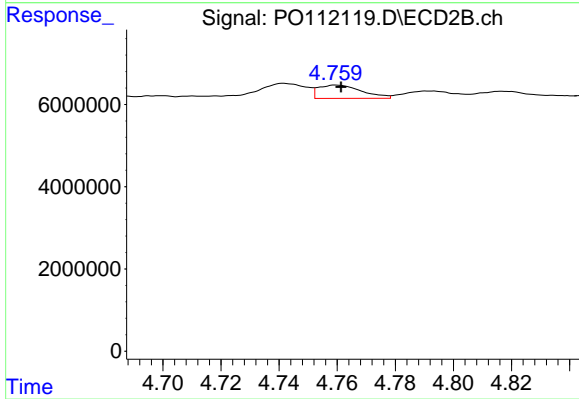
#11 AR-1232-1

R.T.: 4.035 min
 Delta R.T.: -0.001 min
 Response: 1019006
 Conc: 6.79 ng/ml



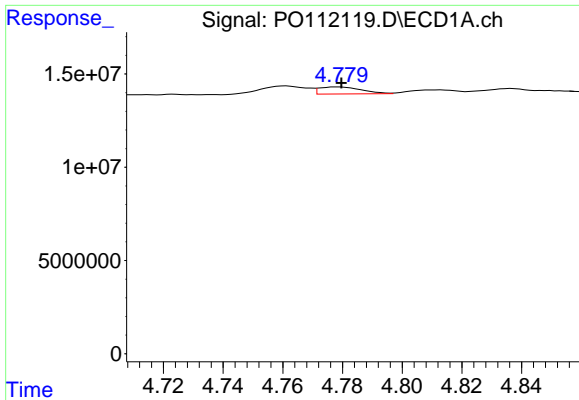
#12 AR-1232-2

R.T.: 4.537 min
 Delta R.T.: -0.002 min
 Response: 3649045
 Conc: 32.11 ng/ml



#12 AR-1232-2

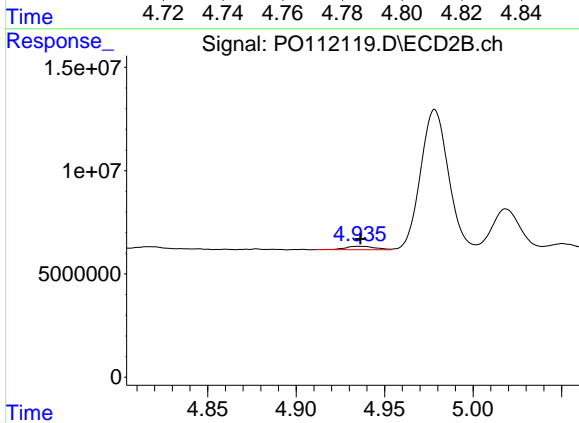
R.T.: 4.759 min
 Delta R.T.: -0.002 min
 Response: 3345268
 Conc: 21.85 ng/ml



#13 AR-1232-3

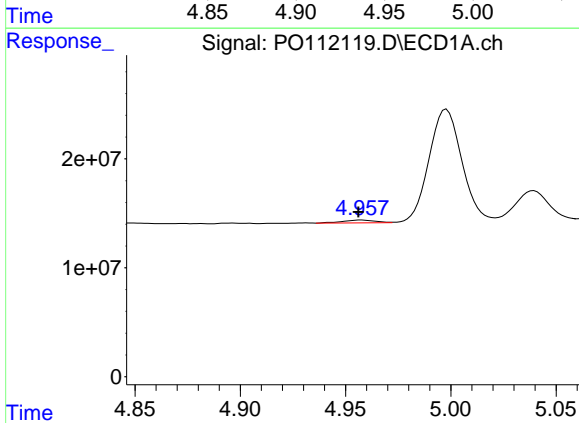
R.T.: 4.779 min
 Delta R.T.: 0.000 min
 Response: 3652699
 Conc: 15.95 ng/ml

Instrument :
 ECD_O
 ClientSampleId :
 ICVPO070825AR1254



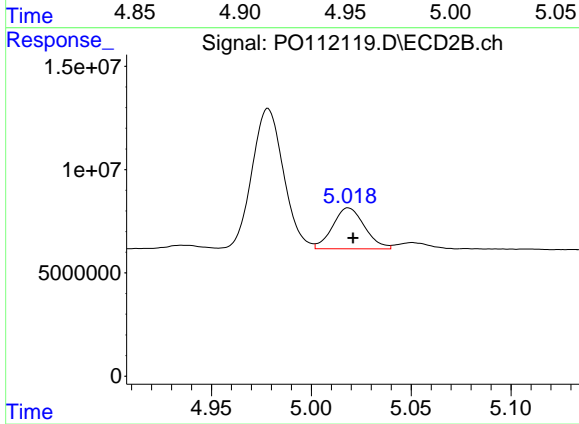
#13 AR-1232-3

R.T.: 4.935 min
 Delta R.T.: -0.001 min
 Response: 1919058
 Conc: 25.42 ng/ml



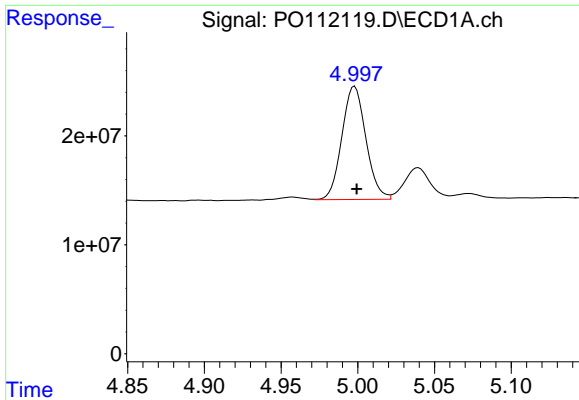
#14 AR-1232-4

R.T.: 4.957 min
 Delta R.T.: 0.001 min
 Response: 2870637
 Conc: 25.12 ng/ml



#14 AR-1232-4

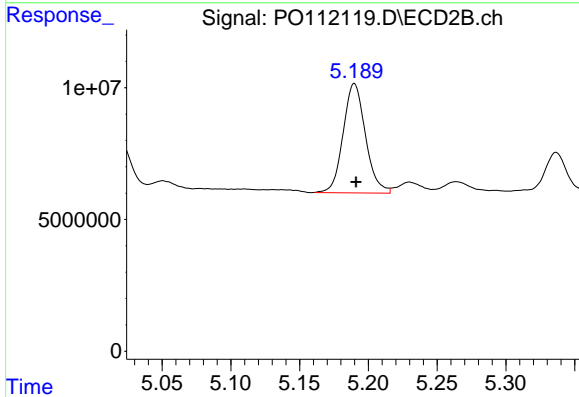
R.T.: 5.019 min
 Delta R.T.: -0.002 min
 Response: 22173199
 Conc: 336.02 ng/ml



#15 AR-1232-5

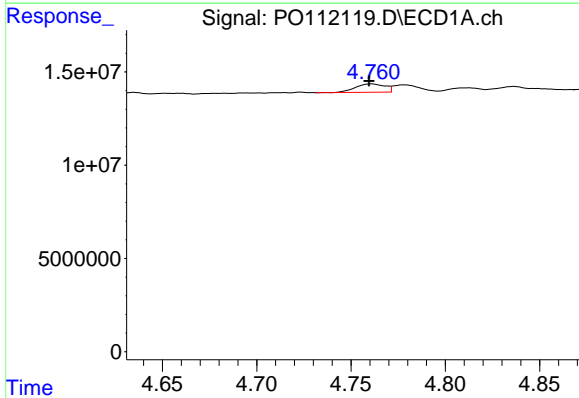
R.T.: 4.998 min
 Delta R.T.: -0.001 min
 Response: 113810382
 Conc: 1550.55 ng/ml

Instrument :
 ECD_O
 ClientSampleId :
 ICVPO070825AR1254



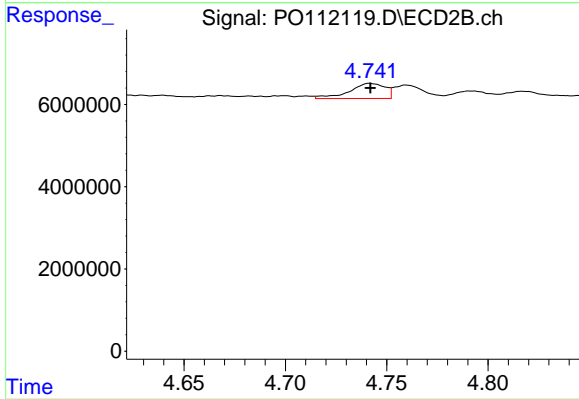
#15 AR-1232-5

R.T.: 5.190 min
 Delta R.T.: -0.001 min
 Response: 46924816
 Conc: 631.90 ng/ml



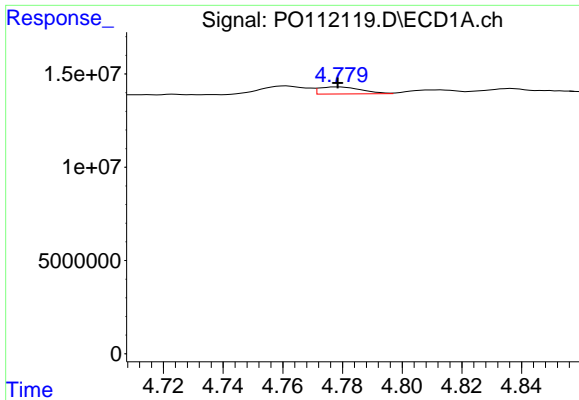
#16 AR-1242-1

R.T.: 4.761 min
 Delta R.T.: 0.001 min
 Response: 4787862
 Conc: 16.53 ng/ml



#16 AR-1242-1

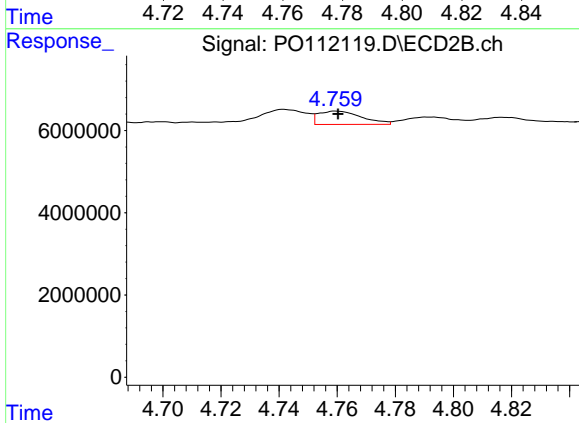
R.T.: 4.742 min
 Delta R.T.: 0.000 min
 Response: 4519478
 Conc: 23.31 ng/ml



#17 AR-1242-2

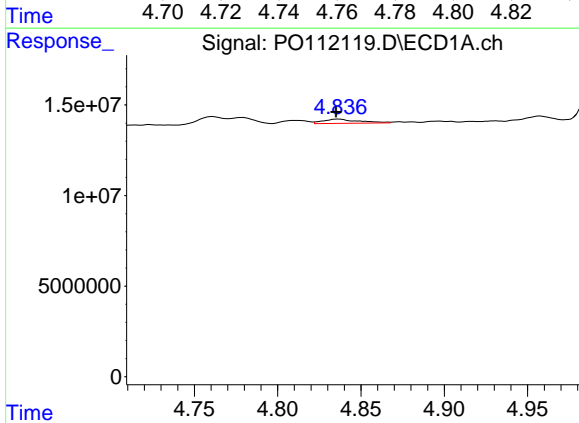
R.T.: 4.779 min
 Delta R.T.: 0.000 min
 Response: 3652699
 Conc: 8.58 ng/ml

Instrument :
 ECD_O
 ClientSampleId :
 ICVPO070825AR1254



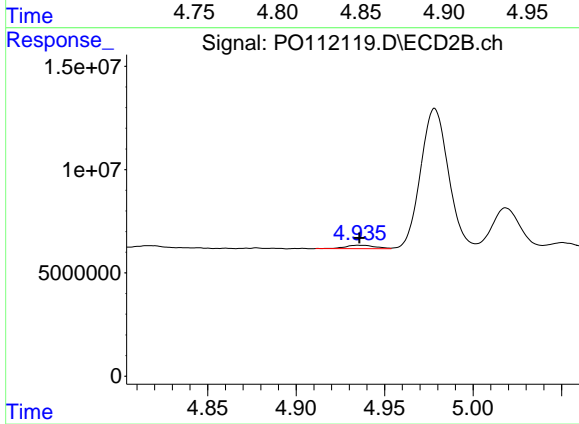
#17 AR-1242-2

R.T.: 4.759 min
 Delta R.T.: 0.000 min
 Response: 3345268
 Conc: 11.81 ng/ml



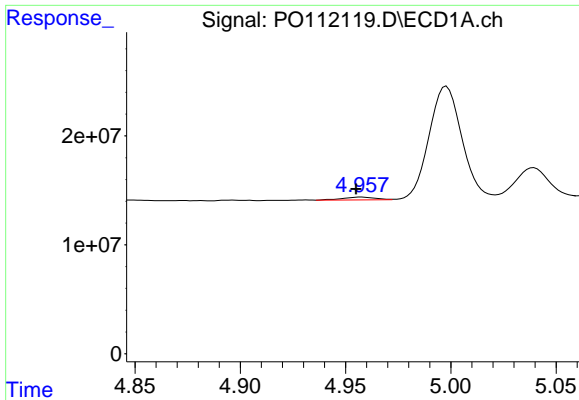
#18 AR-1242-3

R.T.: 4.837 min
 Delta R.T.: 0.001 min
 Response: 3373373
 Conc: 12.33 ng/ml



#18 AR-1242-3

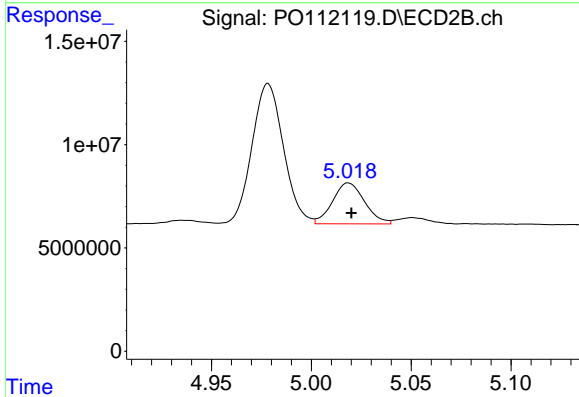
R.T.: 4.935 min
 Delta R.T.: 0.000 min
 Response: 1919058
 Conc: 13.17 ng/ml



#19 AR-1242-4

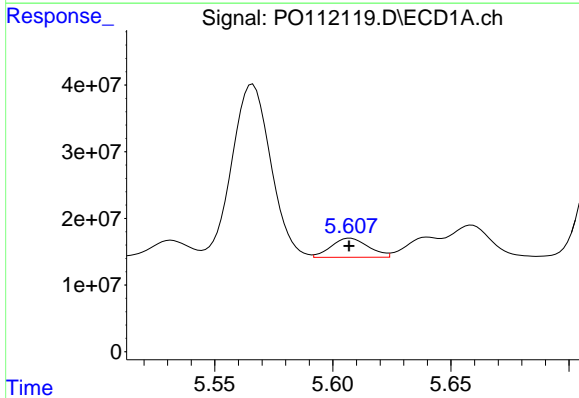
R.T.: 4.957 min
 Delta R.T.: 0.002 min
 Response: 2870637
 Conc: 12.74 ng/ml

Instrument :
 ECD_O
 ClientSampleId :
 ICVPO070825AR1254



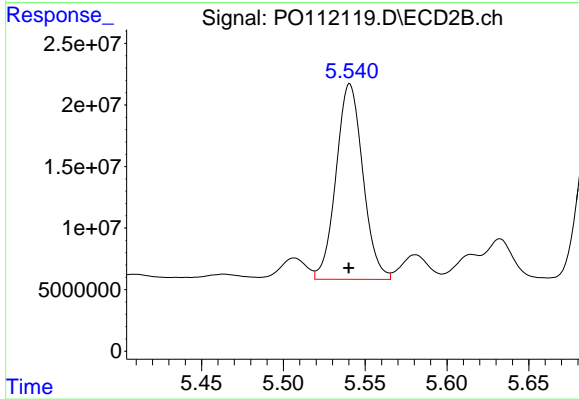
#19 AR-1242-4

R.T.: 5.019 min
 Delta R.T.: -0.001 min
 Response: 22173199
 Conc: 156.32 ng/ml



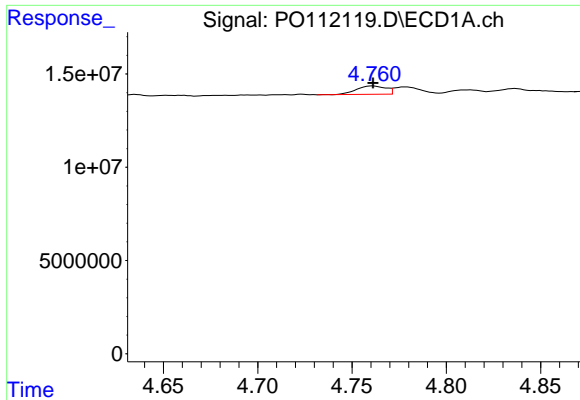
#20 AR-1242-5

R.T.: 5.607 min
 Delta R.T.: 0.000 min
 Response: 31573455
 Conc: 149.16 ng/ml



#20 AR-1242-5

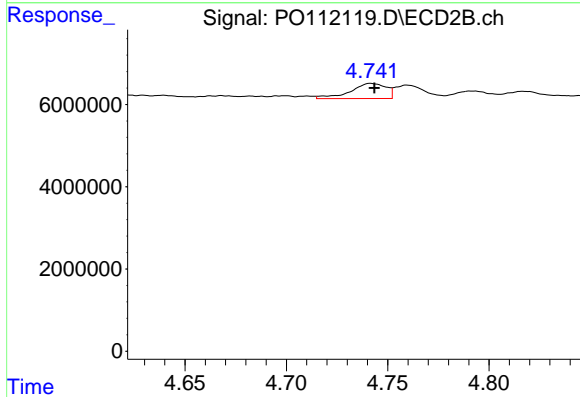
R.T.: 5.541 min
 Delta R.T.: 0.000 min
 Response: 181031677
 Conc: 996.13 ng/ml



#21 AR-1248-1

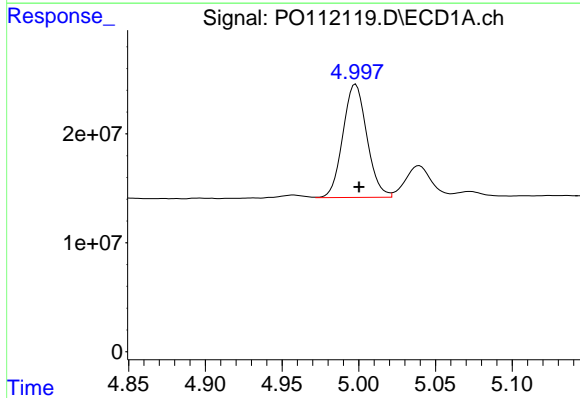
R.T.: 4.761 min
 Delta R.T.: 0.000 min
 Response: 4787862
 Conc: 21.10 ng/ml

Instrument :
 ECD_O
 ClientSampleId :
 ICVPO070825AR1254



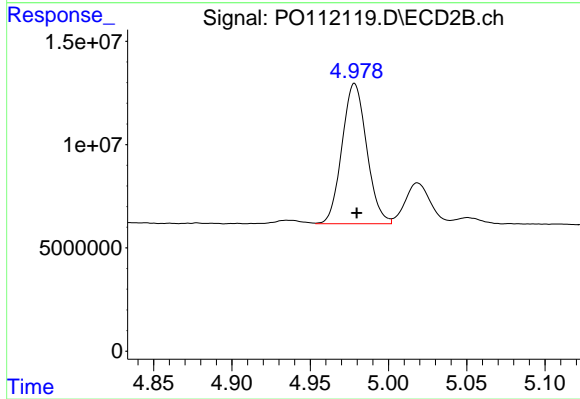
#21 AR-1248-1

R.T.: 4.742 min
 Delta R.T.: -0.002 min
 Response: 4519478
 Conc: 29.28 ng/ml



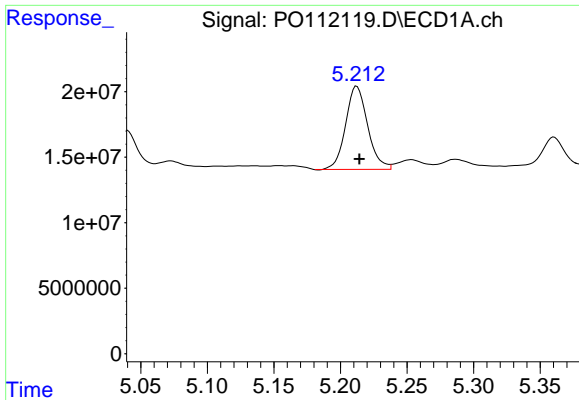
#22 AR-1248-2

R.T.: 4.998 min
 Delta R.T.: -0.002 min
 Response: 113810382
 Conc: 369.12 ng/ml



#22 AR-1248-2

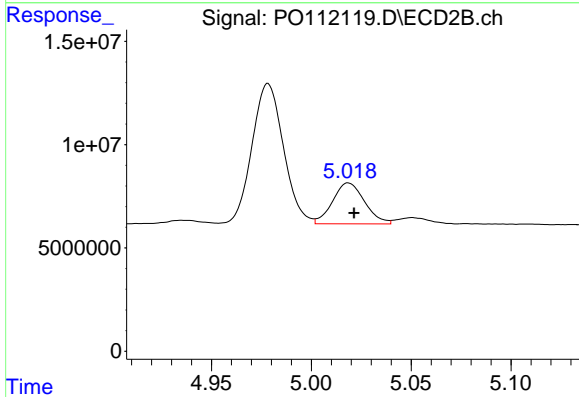
R.T.: 4.978 min
 Delta R.T.: -0.001 min
 Response: 74498602
 Conc: 362.05 ng/ml



#23 AR-1248-3

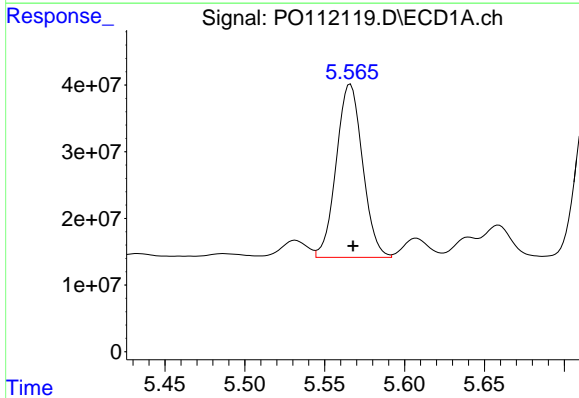
R.T.: 5.212 min
 Delta R.T.: -0.002 min
 Response: 73304723
 Conc: 179.97 ng/ml

Instrument :
 ECD_O
 ClientSampleId :
 ICVPO070825AR1254



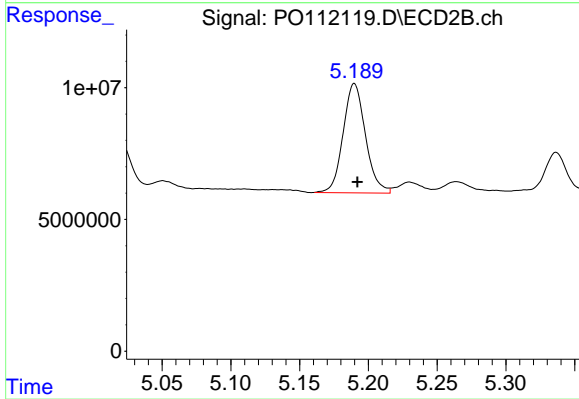
#23 AR-1248-3

R.T.: 5.019 min
 Delta R.T.: -0.003 min
 Response: 22173199
 Conc: 103.23 ng/ml



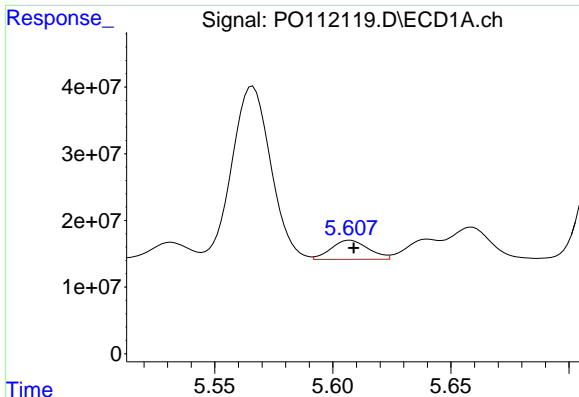
#24 AR-1248-4

R.T.: 5.566 min
 Delta R.T.: -0.002 min
 Response: 297798906
 Conc: 515.98 ng/ml



#24 AR-1248-4

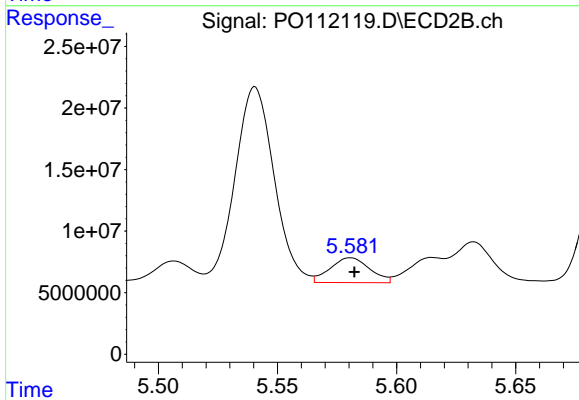
R.T.: 5.190 min
 Delta R.T.: -0.002 min
 Response: 46924816
 Conc: 181.37 ng/ml



#25 AR-1248-5

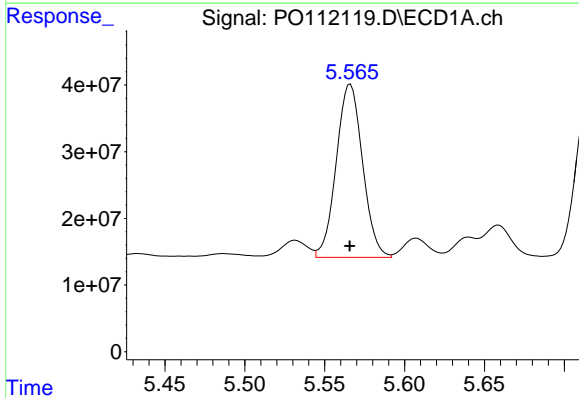
R.T.: 5.607 min
 Delta R.T.: -0.002 min
 Response: 31573455
 Conc: 80.89 ng/ml

Instrument :
 ECD_O
 ClientSampleId :
 ICVPO070825AR1254



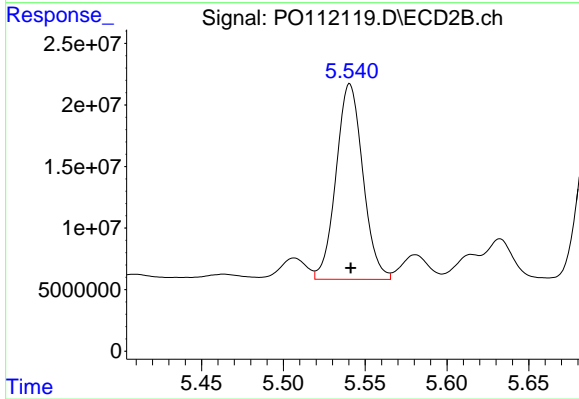
#25 AR-1248-5

R.T.: 5.581 min
 Delta R.T.: -0.002 min
 Response: 23348583
 Conc: 93.19 ng/ml



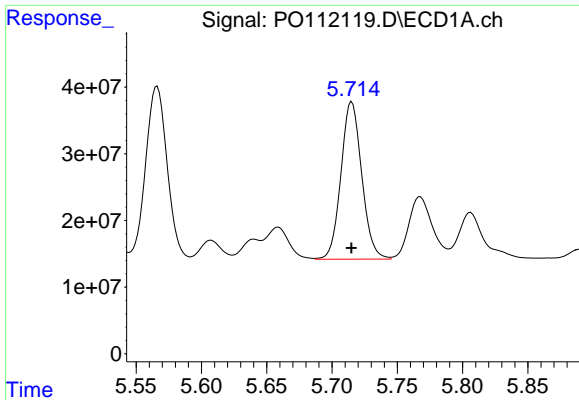
#26 AR-1254-1

R.T.: 5.566 min
 Delta R.T.: 0.000 min
 Response: 297798906
 Conc: 484.14 ng/ml



#26 AR-1254-1

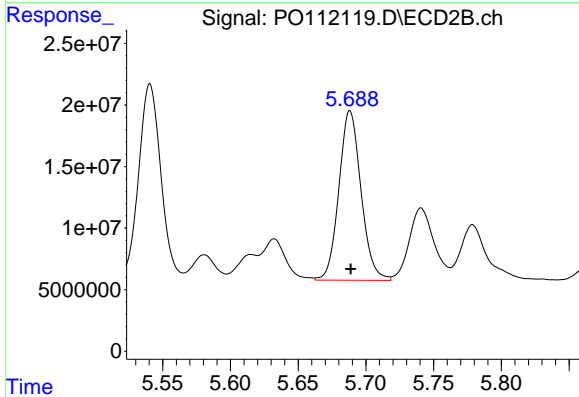
R.T.: 5.541 min
 Delta R.T.: 0.000 min
 Response: 181031677
 Conc: 474.94 ng/ml



#27 AR-1254-2

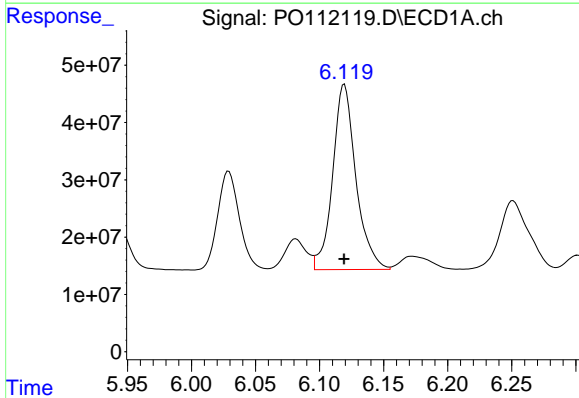
R.T.: 5.715 min
 Delta R.T.: 0.000 min
 Response: 261892236
 Conc: 488.89 ng/ml

Instrument :
 ECD_O
 ClientSampleId :
 ICVPO070825AR1254



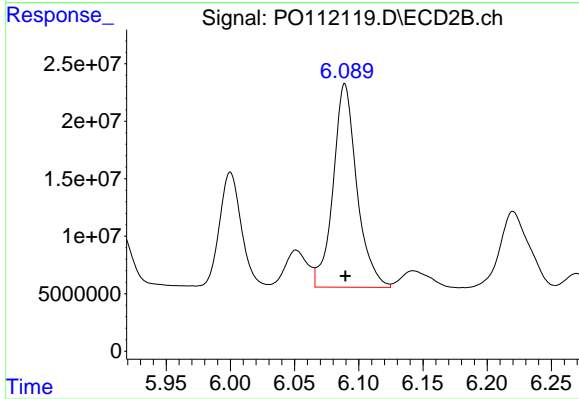
#27 AR-1254-2

R.T.: 5.688 min
 Delta R.T.: 0.000 min
 Response: 156830775
 Conc: 472.65 ng/ml



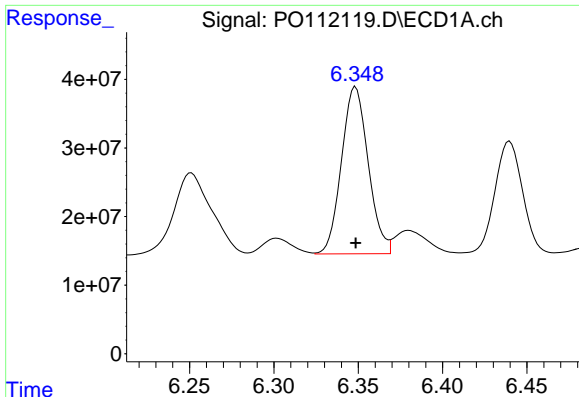
#28 AR-1254-3

R.T.: 6.119 min
 Delta R.T.: 0.000 min
 Response: 408052251
 Conc: 486.02 ng/ml



#28 AR-1254-3

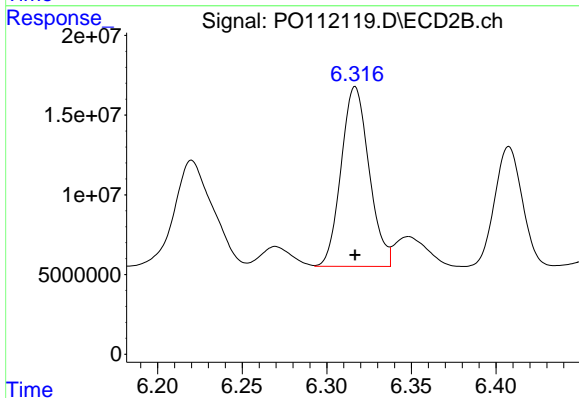
R.T.: 6.089 min
 Delta R.T.: 0.000 min
 Response: 227260272
 Conc: 471.45 ng/ml



#29 AR-1254-4

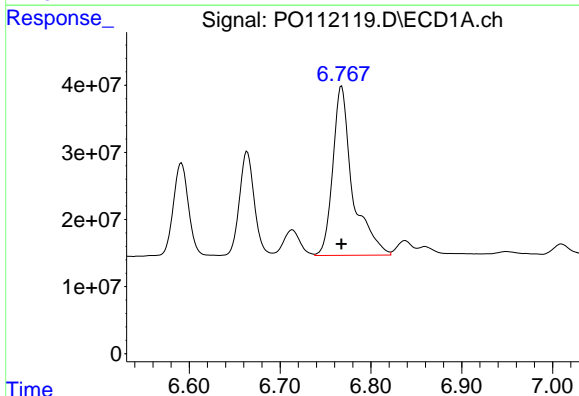
R.T.: 6.348 min
 Delta R.T.: 0.000 min
 Response: 268581641
 Conc: 558.36 ng/ml

Instrument :
 ECD_O
 ClientSampleId :
 ICVPO070825AR1254



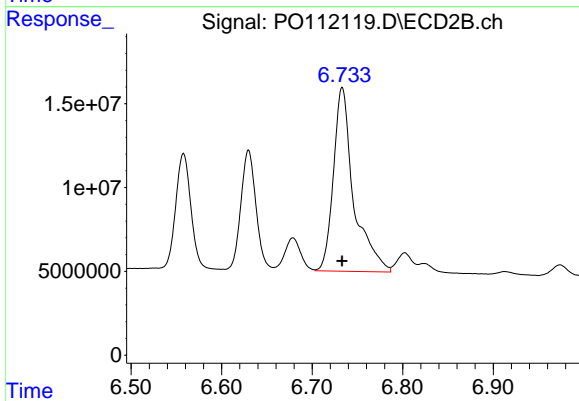
#29 AR-1254-4

R.T.: 6.317 min
 Delta R.T.: 0.000 min
 Response: 129562009
 Conc: 496.99 ng/ml



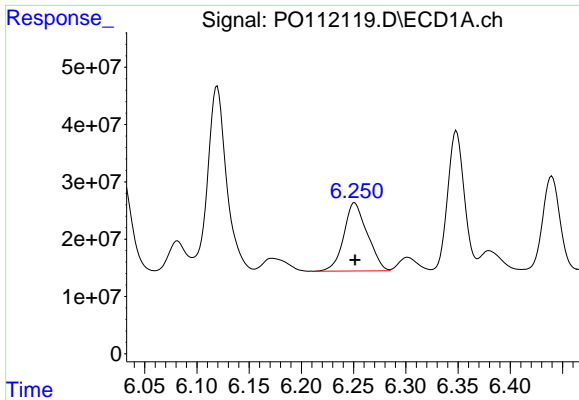
#30 AR-1254-5

R.T.: 6.768 min
 Delta R.T.: 0.000 min
 Response: 381510203
 Conc: 492.94 ng/ml



#30 AR-1254-5

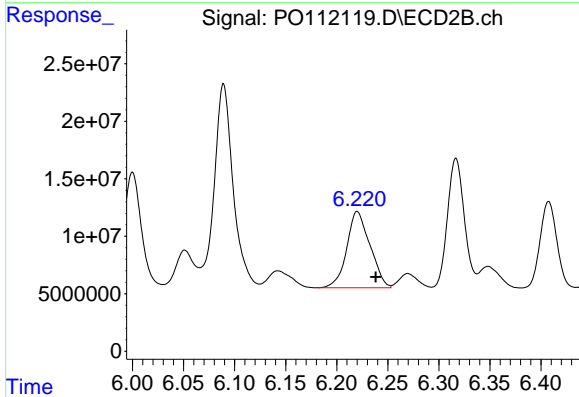
R.T.: 6.733 min
 Delta R.T.: 0.000 min
 Response: 170469199
 Conc: 478.37 ng/ml



#31 AR-1260-1

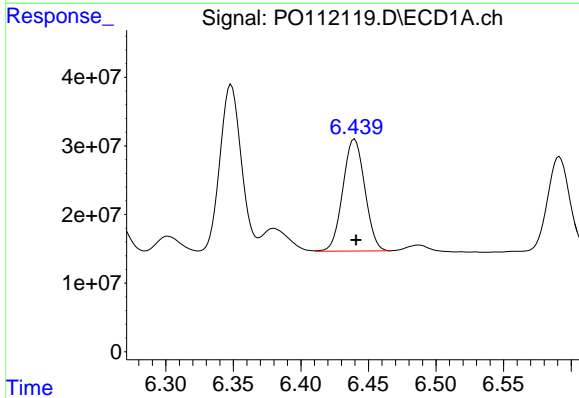
R.T.: 6.251 min
 Delta R.T.: 0.000 min
 Response: 185531244
 Conc: 370.15 ng/ml

Instrument :
 ECD_O
 ClientSampleId :
 ICVPO070825AR1254



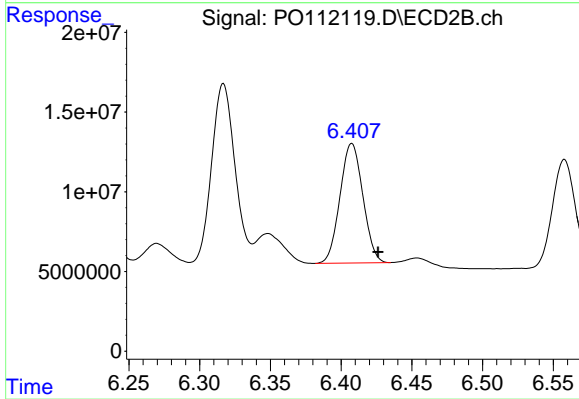
#31 AR-1260-1

R.T.: 6.220 min
 Delta R.T.: -0.018 min
 Response: 105086044
 Conc: 374.56 ng/ml



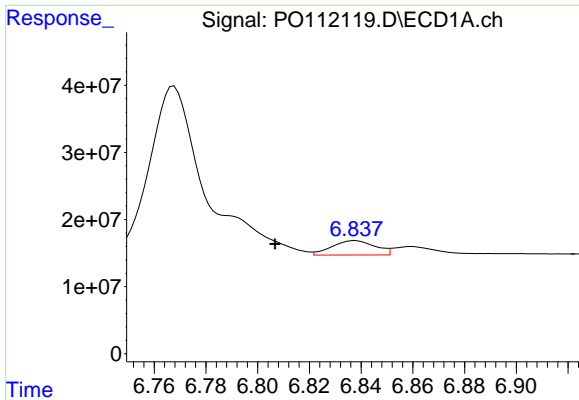
#32 AR-1260-2

R.T.: 6.440 min
 Delta R.T.: -0.001 min
 Response: 184144878
 Conc: 249.47 ng/ml



#32 AR-1260-2

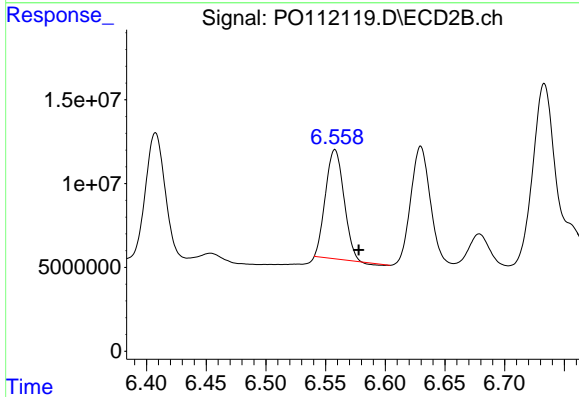
R.T.: 6.408 min
 Delta R.T.: -0.018 min
 Response: 84447586
 Conc: 248.38 ng/ml



#33 AR-1260-3

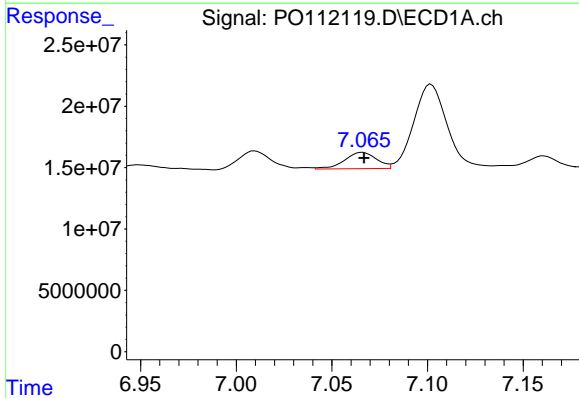
R.T.: 6.838 min
 Delta R.T.: 0.031 min
 Response: 24914935
 Conc: 38.01 ng/ml

Instrument :
 ECD_O
 ClientSampleId :
 ICVPO070825AR1254



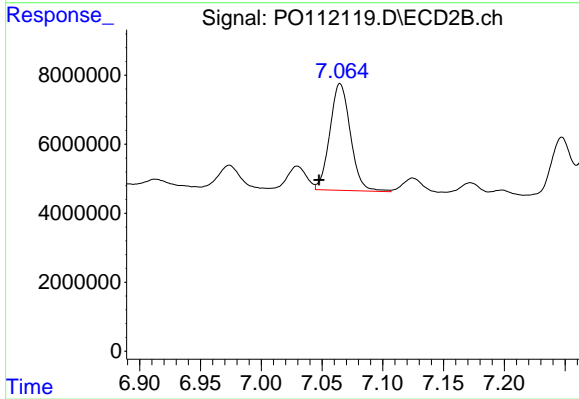
#33 AR-1260-3

R.T.: 6.558 min
 Delta R.T.: -0.020 min
 Response: 69411944
 Conc: 251.87 ng/ml



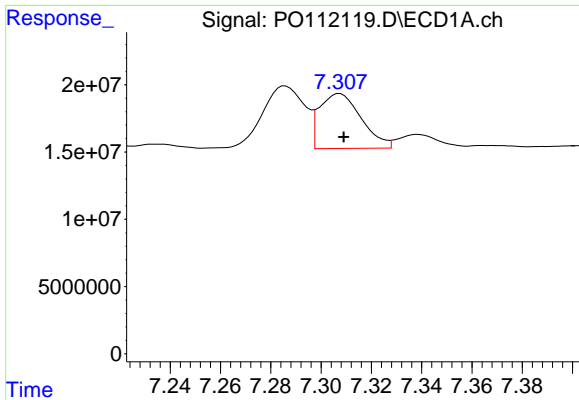
#34 AR-1260-4

R.T.: 7.066 min
 Delta R.T.: 0.000 min
 Response: 15559510
 Conc: 35.75 ng/ml



#34 AR-1260-4

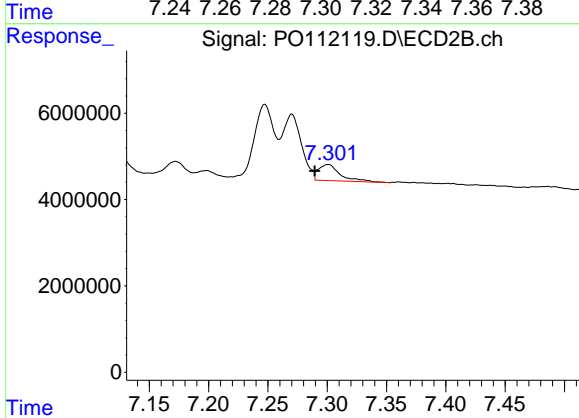
R.T.: 7.065 min
 Delta R.T.: 0.017 min
 Response: 36429024
 Conc: 181.56 ng/ml



#35 AR-1260-5

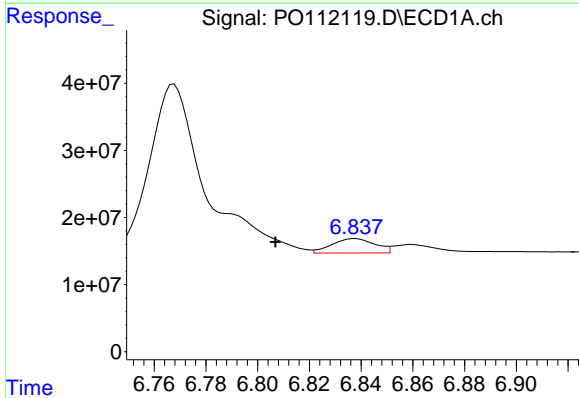
R.T.: 7.308 min
 Delta R.T.: -0.001 min
 Response: 47138384
 Conc: 37.34 ng/ml

Instrument :
 ECD_O
 ClientSampleId :
 ICVPO070825AR1254



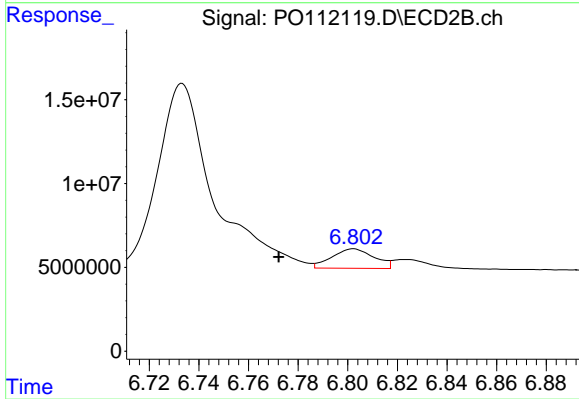
#35 AR-1260-5

R.T.: 7.301 min
 Delta R.T.: 0.011 min
 Response: 4860559
 Conc: 10.86 ng/ml



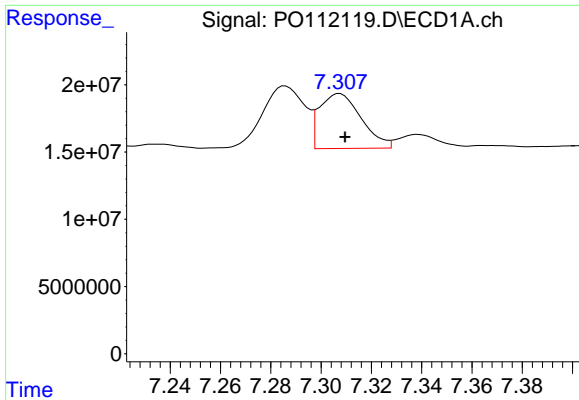
#36 AR-1262-1

R.T.: 6.838 min
 Delta R.T.: 0.031 min
 Response: 24914935
 Conc: 24.39 ng/ml



#36 AR-1262-1

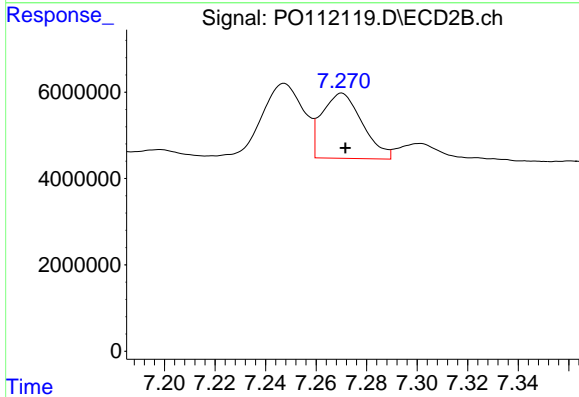
R.T.: 6.802 min
 Delta R.T.: 0.030 min
 Response: 13741876
 Conc: 33.74 ng/ml



#37 AR-1262-2

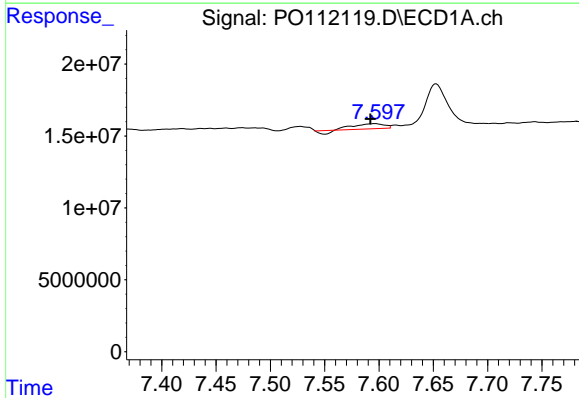
R.T.: 7.308 min
 Delta R.T.: -0.002 min
 Response: 47138384
 Conc: 28.75 ng/ml

Instrument :
 ECD_O
 ClientSampleId :
 ICVPO070825AR1254



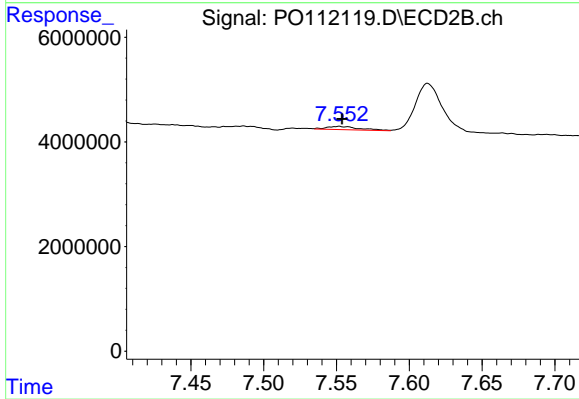
#37 AR-1262-2

R.T.: 7.270 min
 Delta R.T.: -0.001 min
 Response: 16747621
 Conc: 32.68 ng/ml



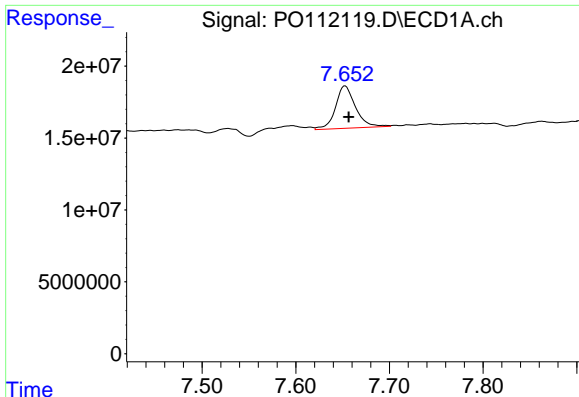
#38 AR-1262-3

R.T.: 7.597 min
 Delta R.T.: 0.005 min
 Response: 6084391
 Conc: 9.48 ng/ml



#38 AR-1262-3

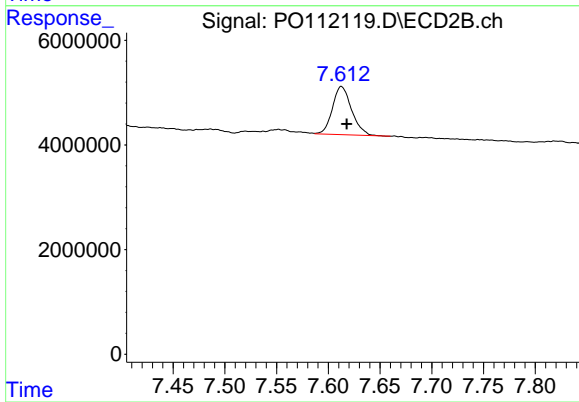
R.T.: 7.552 min
 Delta R.T.: -0.002 min
 Response: 959403
 Conc: 5.34 ng/ml



#39 AR-1262-4

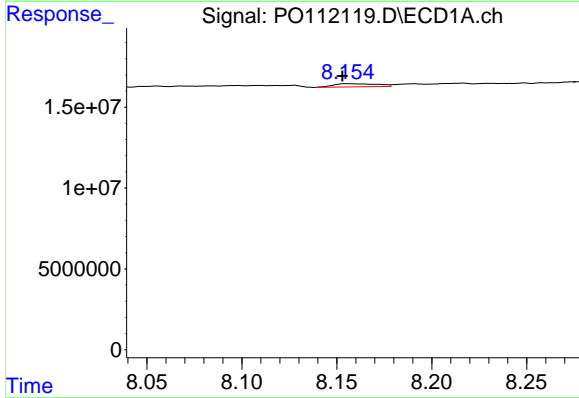
R.T.: 7.653 min
 Delta R.T.: -0.004 min
 Response: 43701194
 Conc: 40.79 ng/ml

Instrument :
 ECD_O
 ClientSampleId :
 ICVPO070825AR1254



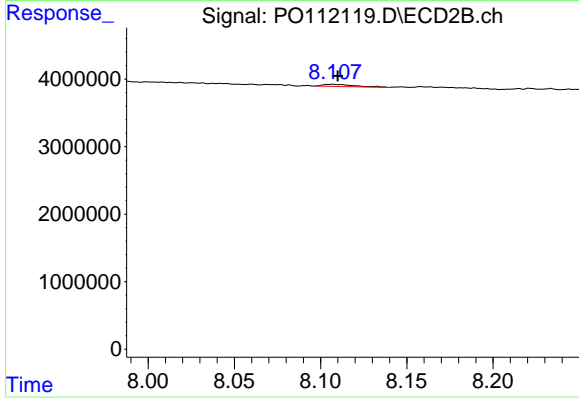
#39 AR-1262-4

R.T.: 7.613 min
 Delta R.T.: -0.005 min
 Response: 11851214
 Conc: 40.74 ng/ml



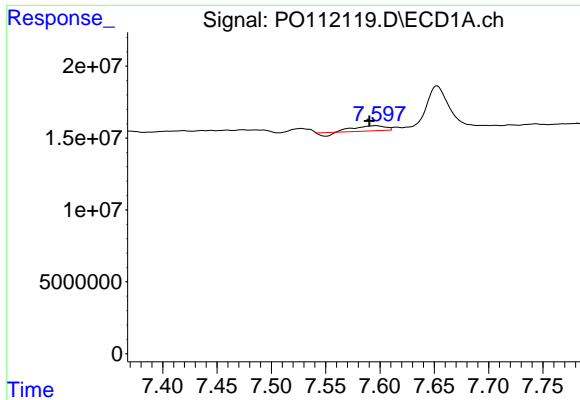
#40 AR-1262-5

R.T.: 8.156 min
 Delta R.T.: 0.003 min
 Response: 3119028
 Conc: 6.96 ng/ml



#40 AR-1262-5

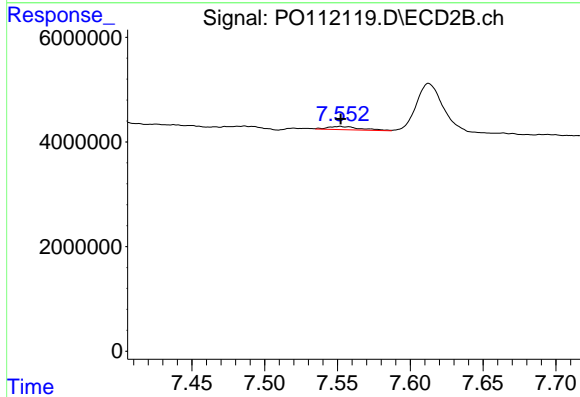
R.T.: 8.107 min
 Delta R.T.: -0.003 min
 Response: 395740
 Conc: 3.74 ng/ml



#41 AR-1268-1

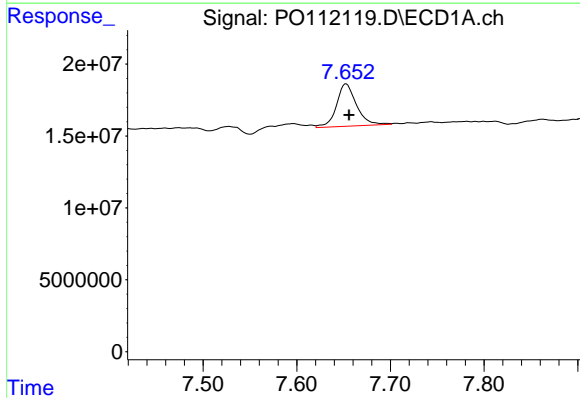
R.T.: 7.597 min
 Delta R.T.: 0.006 min
 Response: 6084391
 Conc: 3.31 ng/ml

Instrument :
 ECD_O
 ClientSampleId :
 ICVPO070825AR1254



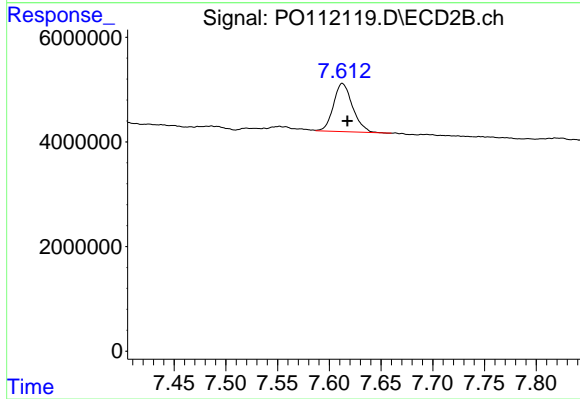
#41 AR-1268-1

R.T.: 7.552 min
 Delta R.T.: 0.000 min
 Response: 959403
 Conc: 1.95 ng/ml



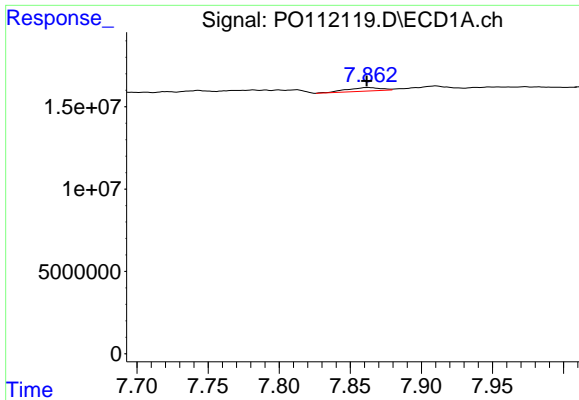
#42 AR-1268-2

R.T.: 7.653 min
 Delta R.T.: -0.003 min
 Response: 43701194
 Conc: 28.06 ng/ml



#42 AR-1268-2

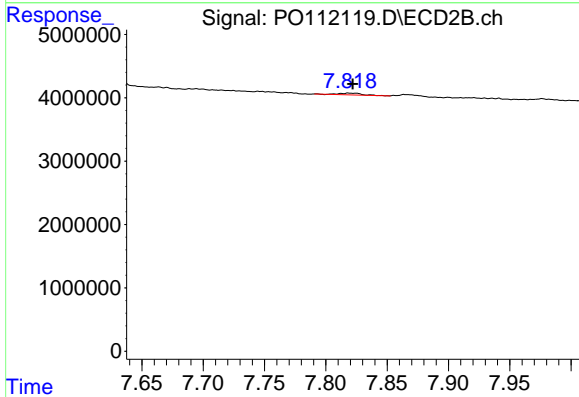
R.T.: 7.613 min
 Delta R.T.: -0.005 min
 Response: 11851214
 Conc: 28.41 ng/ml



#43 AR-1268-3

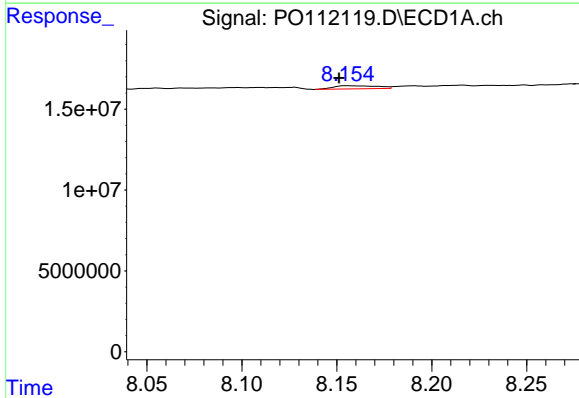
R.T.: 7.863 min
 Delta R.T.: 0.001 min
 Response: 3633662
 Conc: 2.80 ng/ml

Instrument :
 ECD_O
 ClientSampleId :
 ICVPO070825AR1254



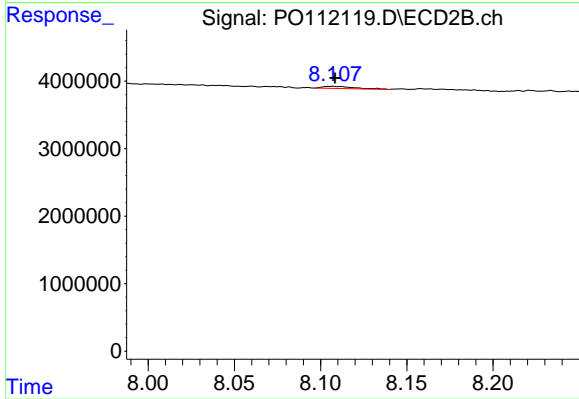
#43 AR-1268-3

R.T.: 7.819 min
 Delta R.T.: -0.003 min
 Response: 325092
 Conc: 1.03 ng/ml



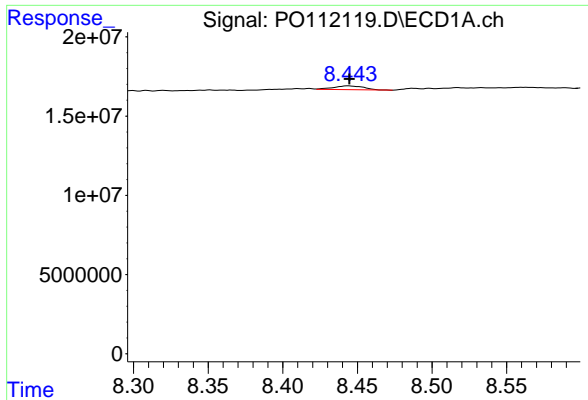
#44 AR-1268-4

R.T.: 8.156 min
 Delta R.T.: 0.004 min
 Response: 3119028
 Conc: 6.49 ng/ml



#44 AR-1268-4

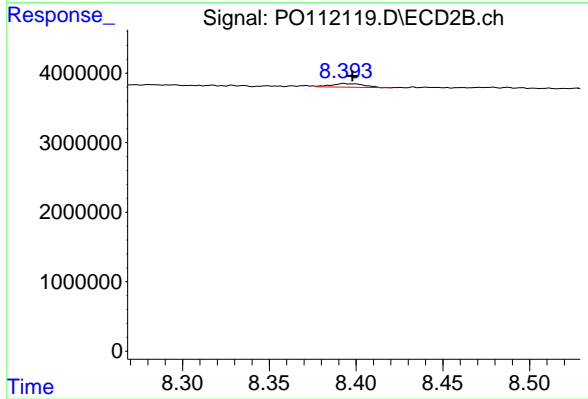
R.T.: 8.107 min
 Delta R.T.: -0.002 min
 Response: 395740
 Conc: 3.55 ng/ml



#45 AR-1268-5

R.T.: 8.444 min
 Delta R.T.: 0.000 min
 Response: 3353233
 Conc: 1.03 ng/ml

Instrument :
 ECD_O
 ClientSampleId :
 ICVPO070825AR1254



#45 AR-1268-5

R.T.: 8.393 min
 Delta R.T.: -0.005 min
 Response: 662949
 Conc: 0.91 ng/ml