

Data Path : Z:\pestpcbsrv\HPCHEM1\ECD_0\Data\P0070825\
 Data File : PO112120.D
 Signal(s) : Signal #1: ECD1A.ch Signal #2: ECD2B.ch
 Acq On : 09 Jul 2025 01:01
 Operator : YP/AJ
 Sample : AR1268ICV500
 Misc :
 ALS Vial : 35 Sample Multiplier: 1

Instrument :
 ECD_0
 ClientSampleId :
 ICVPO070825AR1268

Integration File signal 1: autoint1.e
 Integration File signal 2: autoint2.e
 Quant Time: Jul 09 03:54:46 2025
 Quant Method : Z:\pestpcbsrv\HPCHEM1\ECD_0\methods\P0070825.M
 Quant Title : GC EXTRACTABLES
 QLast Update : Wed Jul 09 03:33:24 2025
 Response via : Initial Calibration
 Integrator: ChemStation

Volume Inj. : 2 µl
 Signal #1 Phase : ZB-MR2 Signal #2 Phase: ZB-MR2
 Signal #1 Info : 30Mx0.32mmx 0.50µ Signal #2 Info : 30M x 0.32mm x 0.25µm

Compound	RT#1	RT#2	Resp#1	Resp#2	ng/ml	ng/ml

System Monitoring Compounds						
1) SA Tetrachlo...	3.672	3.666	507.9E6	314.4E6	50.119	49.097
2) SA Decachlor...	8.702	8.650	672.6E6	158.8E6	51.008	50.729
Target Compounds						
41) L9 AR-1268-1	7.592	7.554	933.4E6	244.5E6	507.990	497.487
42) L9 AR-1268-2	7.658	7.619	787.7E6	208.0E6	505.709	498.485
43) L9 AR-1268-3	7.863	7.823	660.1E6	157.4E6	507.919	497.424
44) L9 AR-1268-4	8.153	8.110	233.4E6	55400600	485.897	496.813
45) L9 AR-1268-5	8.446	8.399	1686.7E6	361.3E6	516.807	497.353

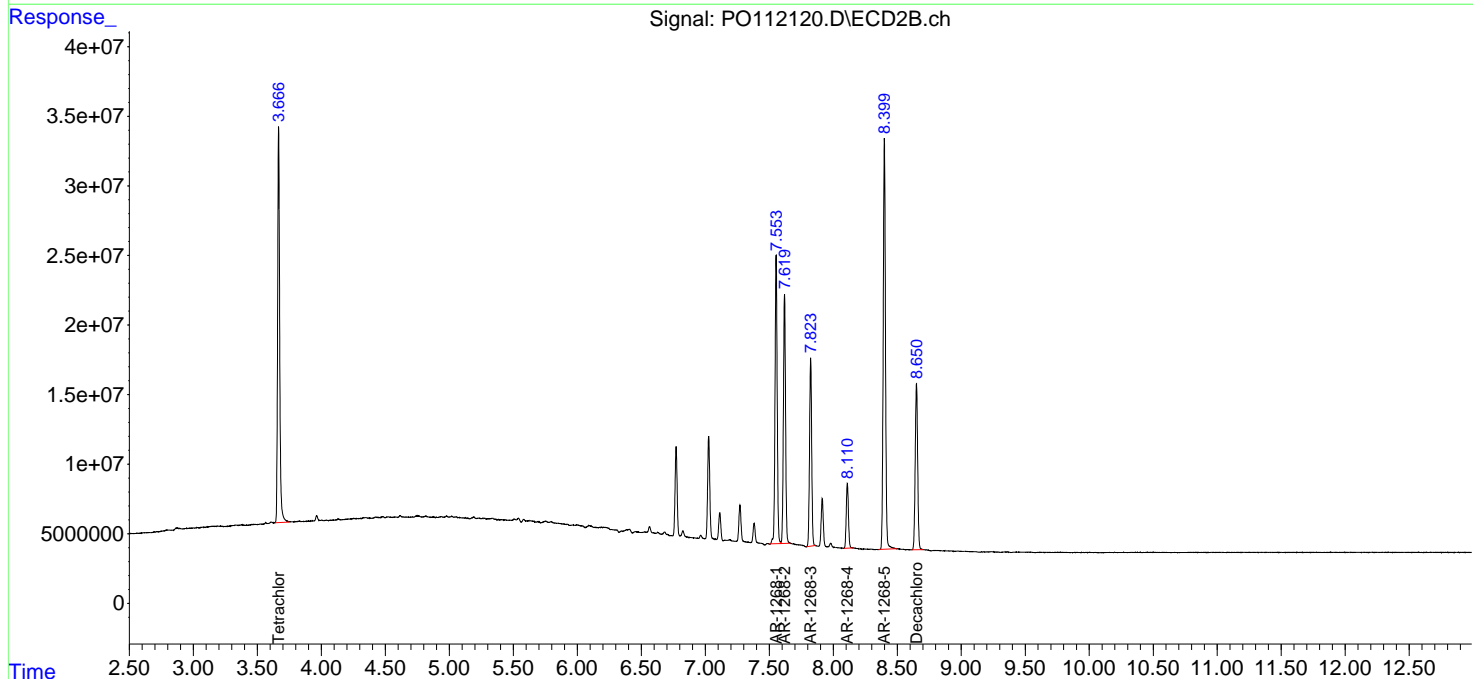
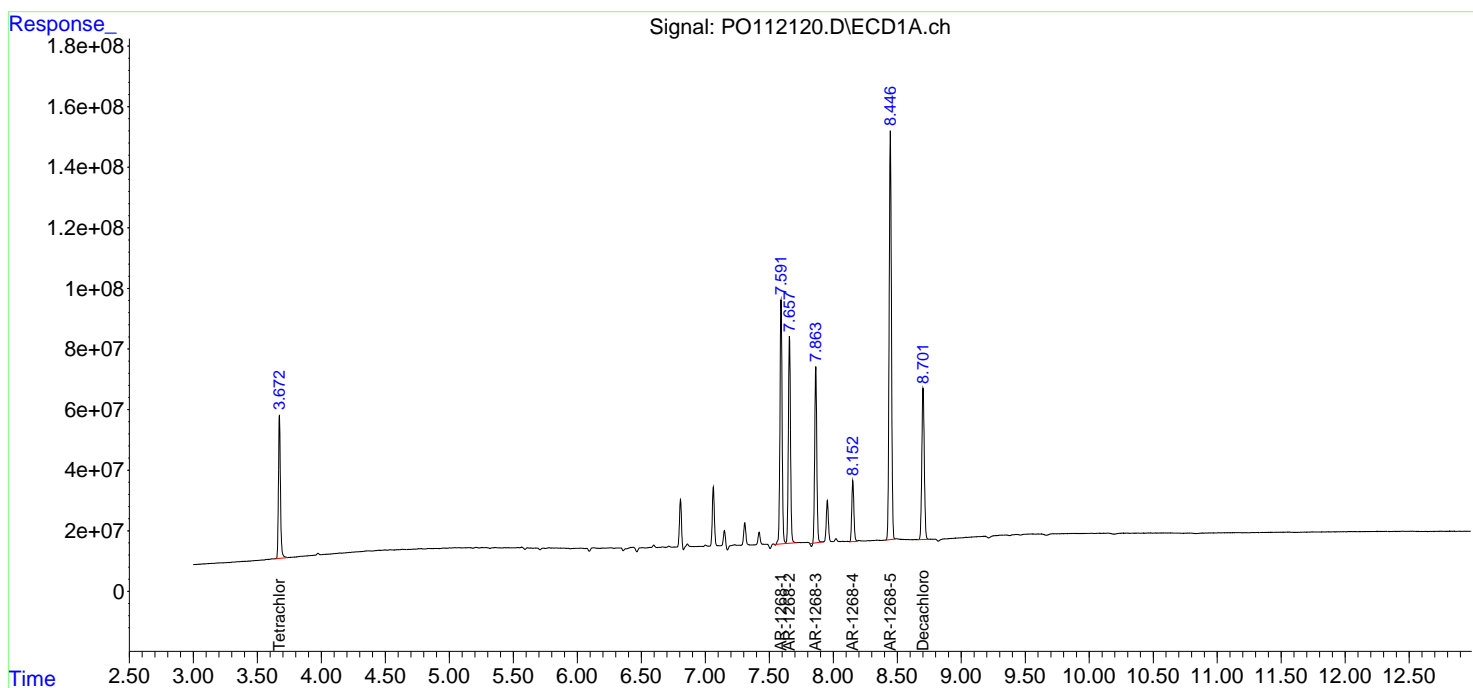
(f)=RT Delta > 1/2 Window (#)=Amounts differ by > 25% (m)=manual int.

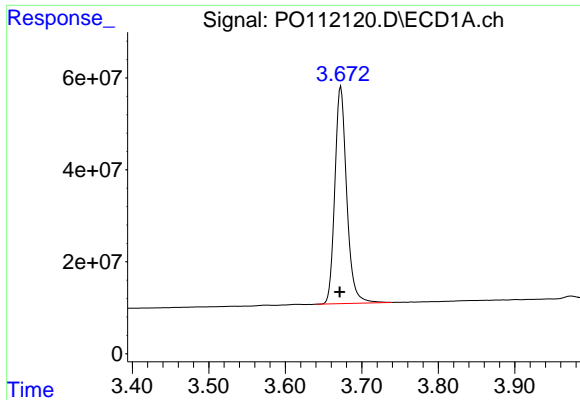
Data Path : Z:\pestpcbsrv\HPCHEM1\ECD_0\Data\P0070825\
 Data File : P0112120.D
 Signal(s) : Signal #1: ECD1A.ch Signal #2: ECD2B.ch
 Acq On : 09 Jul 2025 01:01
 Operator : YP/AJ
 Sample : AR1268ICV500
 Misc :
 ALS Vial : 35 Sample Multiplier: 1

Instrument :
 ECD_0
ClientSampleId :
 ICVPO070825AR1268

Integration File signal 1: autoint1.e
 Integration File signal 2: autoint2.e
 Quant Time: Jul 09 03:54:46 2025
 Quant Method : Z:\pestpcbsrv\HPCHEM1\ECD_0\methods\P0070825.M
 Quant Title : GC EXTRACTABLES
 QLast Update : Wed Jul 09 03:33:24 2025
 Response via : Initial Calibration
 Integrator: ChemStation

Volume Inj. : 2 µl
 Signal #1 Phase : ZB-MR1 Signal #2 Phase: ZB-MR2
 Signal #1 Info : 30Mx0.32mmx 0.50µ Signal #2 Info : 30M x 0.32mm x 0.25µm

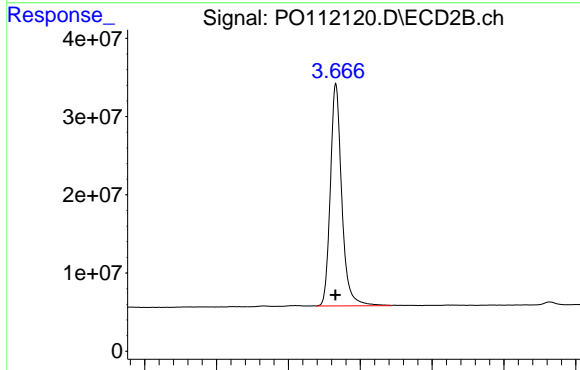




#1 Tetrachloro-m-xylene

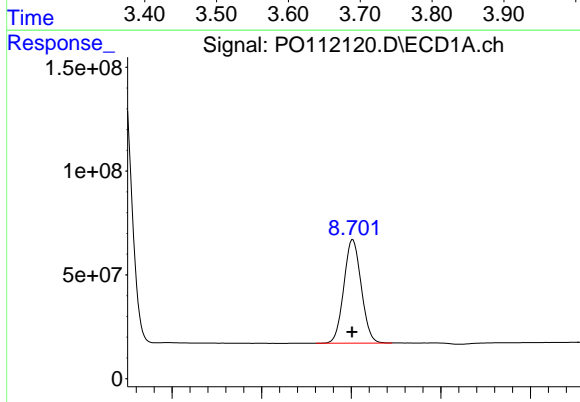
R.T.: 3.672 min
 Delta R.T.: 0.001 min
 Response: 507948794
 Conc: 50.12 ng/ml

Instrument :
 ECD_O
 ClientSampleId :
 ICVPO070825AR1268



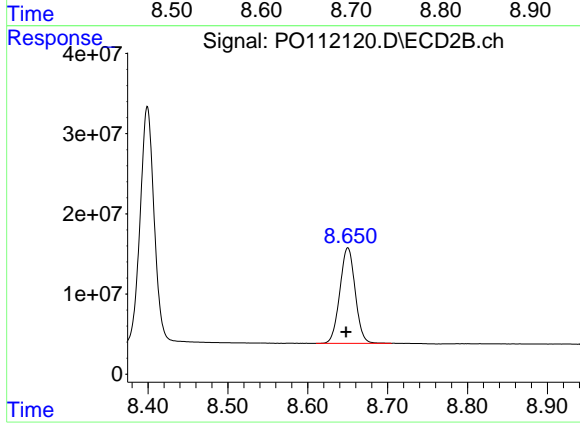
#1 Tetrachloro-m-xylene

R.T.: 3.666 min
 Delta R.T.: 0.000 min
 Response: 314362501
 Conc: 49.10 ng/ml



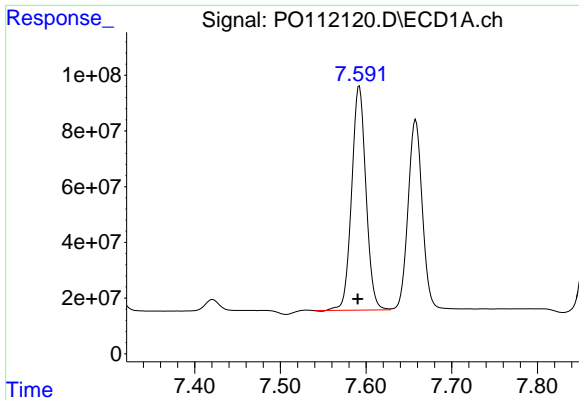
#2 Decachlorobiphenyl

R.T.: 8.702 min
 Delta R.T.: 0.000 min
 Response: 672554151
 Conc: 51.01 ng/ml



#2 Decachlorobiphenyl

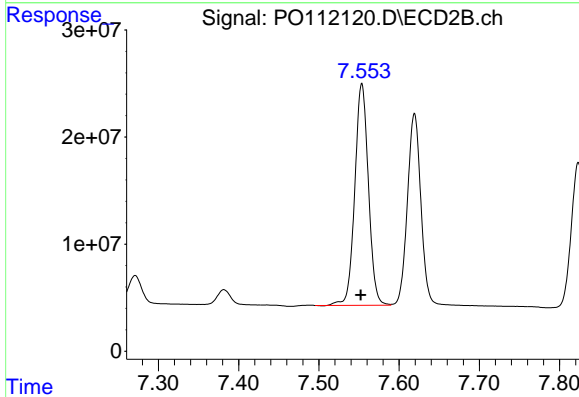
R.T.: 8.650 min
 Delta R.T.: 0.002 min
 Response: 158800125
 Conc: 50.73 ng/ml



#41 AR-1268-1

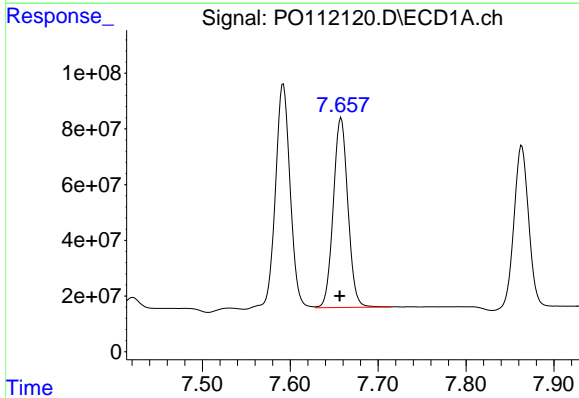
R.T.: 7.592 min
 Delta R.T.: 0.002 min
 Response: 933409161
 Conc: 507.99 ng/ml

Instrument :
 ECD_O
 ClientSampleId :
 ICVPO070825AR1268



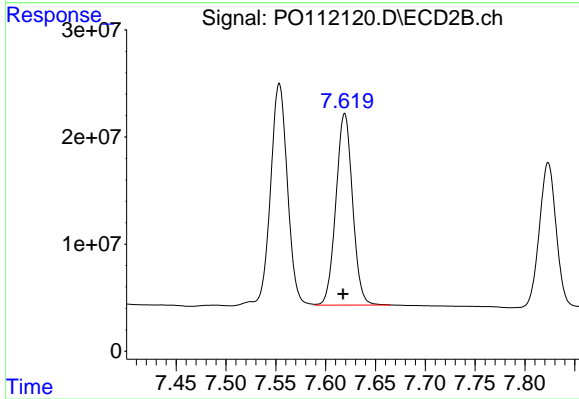
#41 AR-1268-1

R.T.: 7.554 min
 Delta R.T.: 0.001 min
 Response: 244492560
 Conc: 497.49 ng/ml



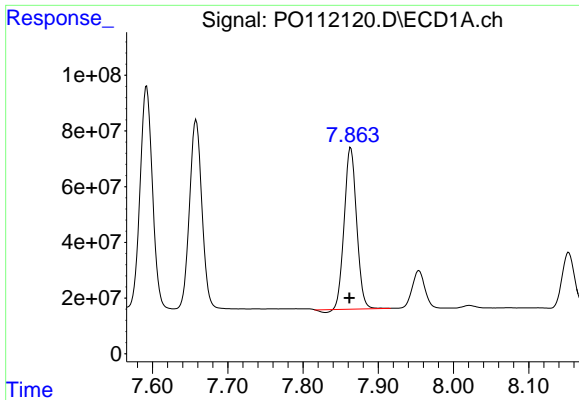
#42 AR-1268-2

R.T.: 7.658 min
 Delta R.T.: 0.002 min
 Response: 787696002
 Conc: 505.71 ng/ml



#42 AR-1268-2

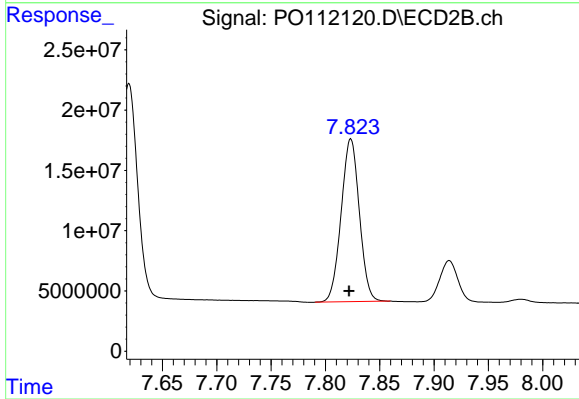
R.T.: 7.619 min
 Delta R.T.: 0.002 min
 Response: 207960999
 Conc: 498.48 ng/ml



#43 AR-1268-3

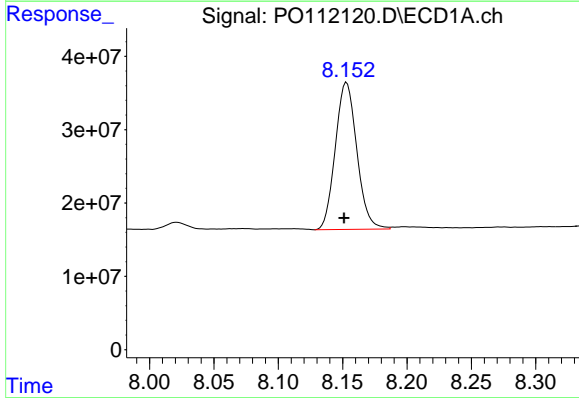
R.T.: 7.863 min
 Delta R.T.: 0.002 min
 Response: 660130633
 Conc: 507.92 ng/ml

Instrument :
 ECD_O
 ClientSampleId :
 ICVPO070825AR1268



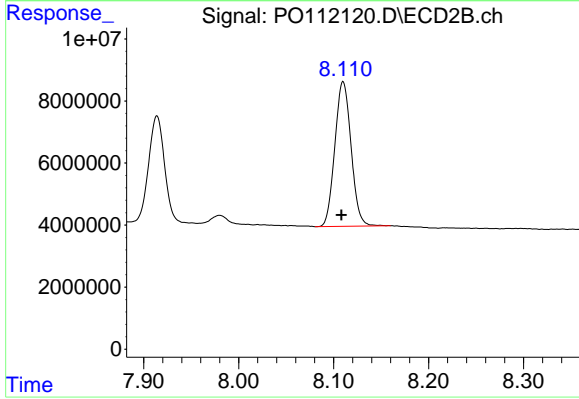
#43 AR-1268-3

R.T.: 7.823 min
 Delta R.T.: 0.002 min
 Response: 157379415
 Conc: 497.42 ng/ml



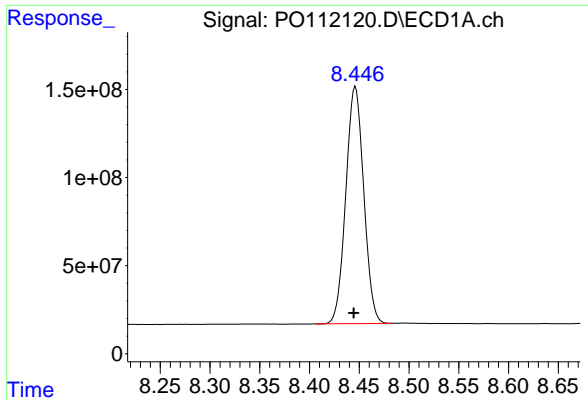
#44 AR-1268-4

R.T.: 8.153 min
 Delta R.T.: 0.002 min
 Response: 233428745
 Conc: 485.90 ng/ml



#44 AR-1268-4

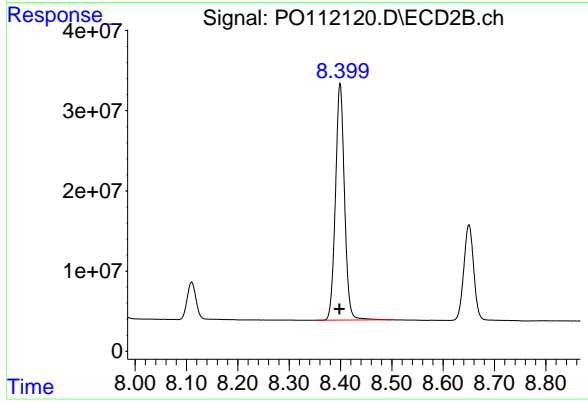
R.T.: 8.110 min
 Delta R.T.: 0.002 min
 Response: 55400600
 Conc: 496.81 ng/ml



#45 AR-1268-5

R.T.: 8.446 min
 Delta R.T.: 0.002 min
 Response: 1686709570
 Conc: 516.81 ng/ml

Instrument :
 ECD_O
 ClientSampleId :
 ICVPO070825AR1268



#45 AR-1268-5

R.T.: 8.399 min
 Delta R.T.: 0.001 min
 Response: 361335866
 Conc: 497.35 ng/ml