

Data Path : Z:\pestpcbsrv\HPCHEM1\ECD_0\Data\P0070921\
 Data File : P0079461.D
 Signal(s) : Signal #1: ECD1A.CH Signal #2: ECD2B.CH
 Acq On : 09 Jul 2021 18:47
 Operator : DD\AJ
 Sample : M2985-03
 Misc :
 ALS Vial : 25 Sample Multiplier: 1

Instrument :
 ECD_0
 ClientSampleId :
 33305

Integration File signal 1: autoint1.e
 Integration File signal 2: autoint2.e
 Quant Time: Jul 10 01:52:40 2021
 Quant Method : Z:\pestpcbsrv\HPCHEM1\ECD_0\methods\P0070821.M
 Quant Title : GC EXTRACTABLES
 QLast Update : Sat Jul 10 00:52:22 2021
 Response via : Initial Calibration
 Integrator: ChemStation 6890 Scale Mode: Small noise peaks clipped

Volume Inj. : 2 µl
 Signal #1 Phase : ZB-MR1 Signal #2 Phase: ZB-MR2
 Signal #1 Info : 30Mx0.32mmx 0.50µ Signal #2 Info : 30M x 0.32mm x 0.25µm

Compound	RT#1	RT#2	Resp#1	Resp#2	ng/ml	ng/ml

System Monitoring Compounds						
1) SA Tetrachlo...	5.020	4.228	1519463	643470	22.726	22.439
2) SA Decachlor...	11.149	9.681	1175842	557109	23.119	21.051

Target Compounds

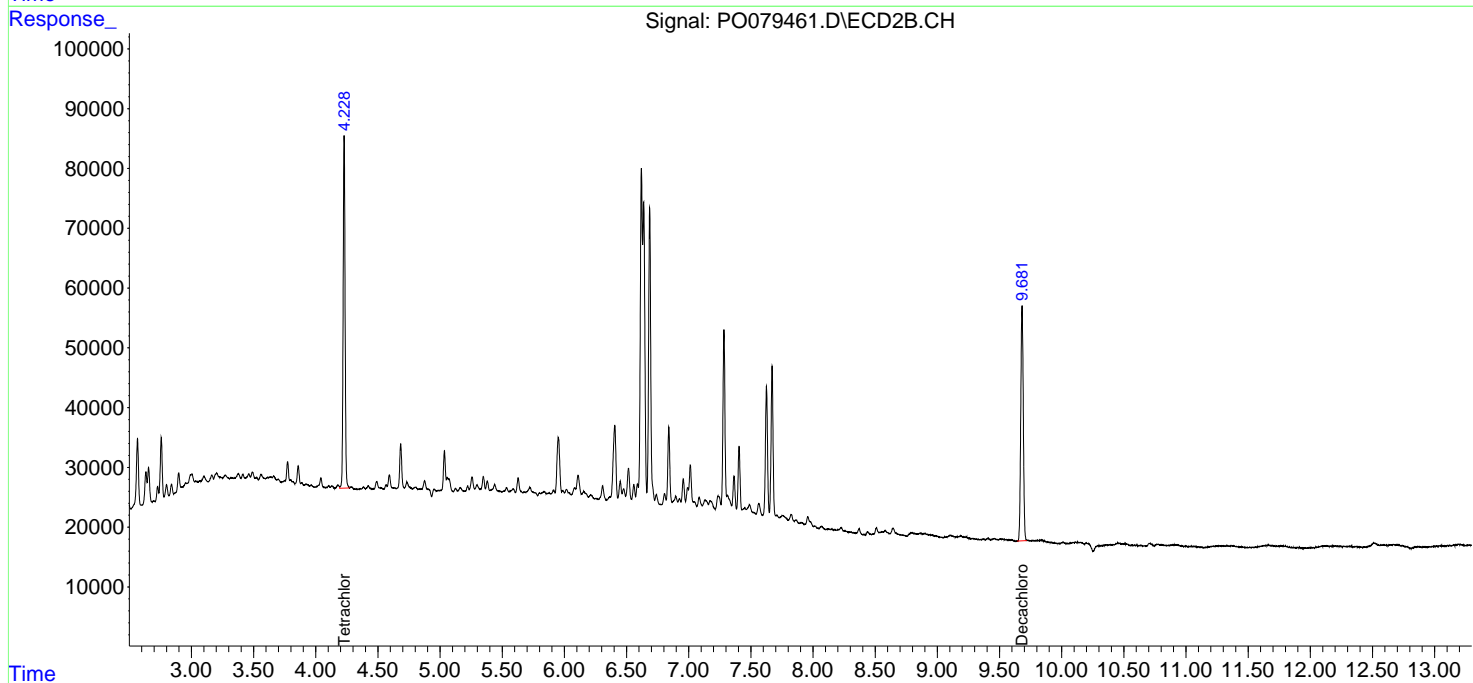
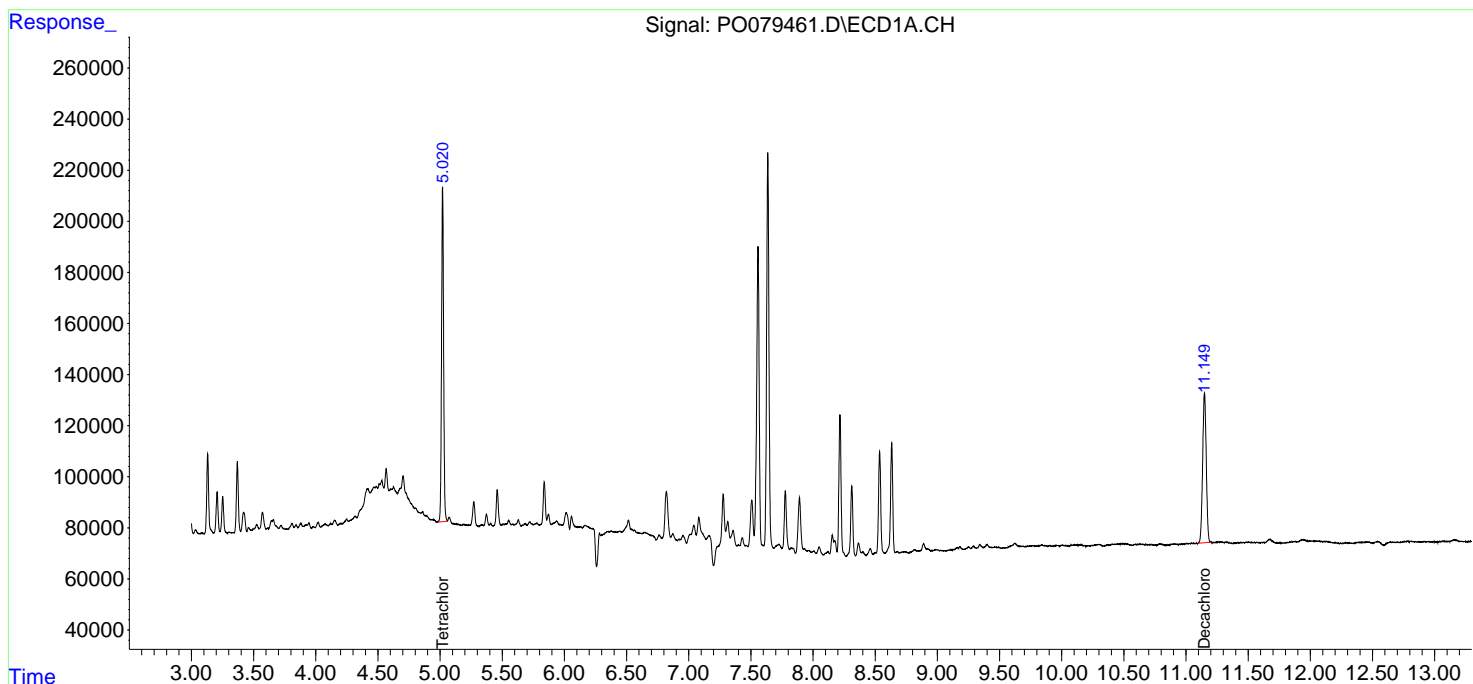
(f)=RT Delta > 1/2 Window (#)=Amounts differ by > 25% (m)=manual int.

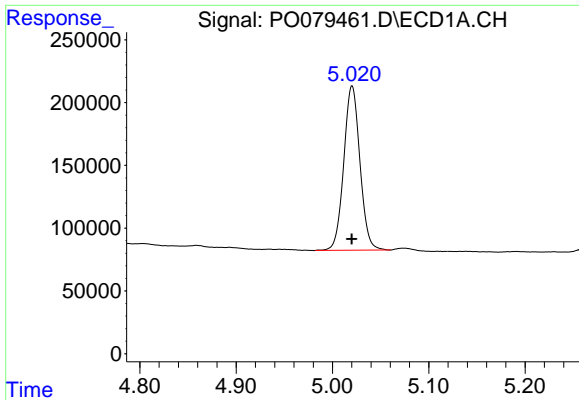
Data Path : Z:\pestpcbsrv\HPCHEM1\ECD_O\Data\P0070921\
 Data File : P0079461.D
 Signal(s) : Signal #1: ECD1A.CH Signal #2: ECD2B.CH
 Acq On : 09 Jul 2021 18:47
 Operator : DD\AJ
 Sample : M2985-03
 Misc :
 ALS Vial : 25 Sample Multiplier: 1

Instrument :
 ECD_O
 ClientSampled :
 33305

Integration File signal 1: autoint1.e
 Integration File signal 2: autoint2.e
 Quant Time: Jul 10 01:52:40 2021
 Quant Method : Z:\pestpcbsrv\HPCHEM1\ECD_O\methods\P0070821.M
 Quant Title : GC EXTRACTABLES
 QLast Update : Sat Jul 10 00:52:22 2021
 Response via : Initial Calibration
 Integrator: ChemStation 6890 Scale Mode: Small noise peaks clipped

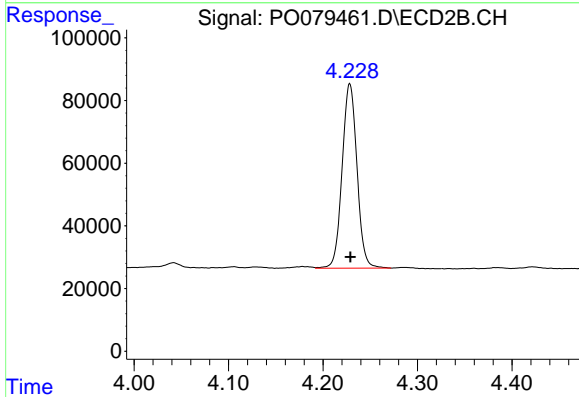
Volume Inj. : 2 µl
 Signal #1 Phase : ZB-MR1 Signal #2 Phase: ZB-MR2
 Signal #1 Info : 30Mx0.32mmx 0.50µ Signal #2 Info : 30M x 0.32mm x 0.25µm



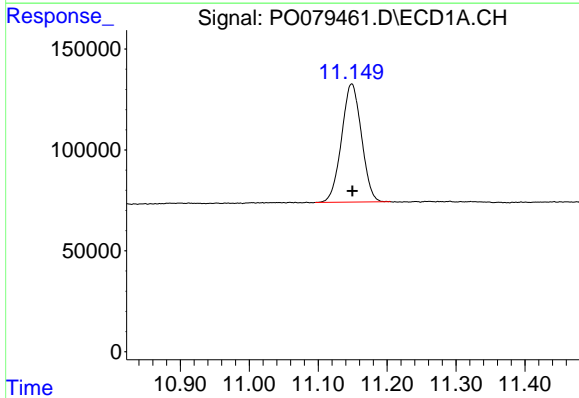


#1 Tetrachloro-m-xylene
 R.T.: 5.020 min
 Delta R.T.: 0.000 min
 Response: 1519463
 Conc: 22.73 ng/ml

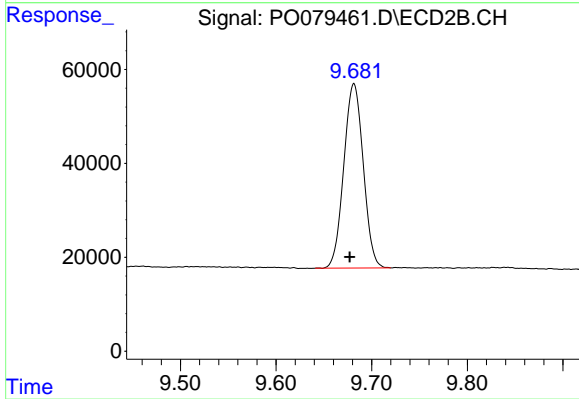
Instrument :
 ECD_O
 ClientSampleId :
 33305



#1 Tetrachloro-m-xylene
 R.T.: 4.228 min
 Delta R.T.: 0.000 min
 Response: 643470
 Conc: 22.44 ng/ml



#2 Decachlorobiphenyl
 R.T.: 11.149 min
 Delta R.T.: -0.001 min
 Response: 1175842
 Conc: 23.12 ng/ml



#2 Decachlorobiphenyl
 R.T.: 9.681 min
 Delta R.T.: 0.004 min
 Response: 557109
 Conc: 21.05 ng/ml