

Data Path : Z:\pestpcbsrv\HPCHEM1\ECD_0\Data\P0070921\
 Data File : P0079462.D
 Signal(s) : Signal #1: ECD1A.CH Signal #2: ECD2B.CH
 Acq On : 09 Jul 2021 20:15
 Operator : DD\AJ
 Sample : AR1660CCC500
 Misc :
 ALS Vial : 3 Sample Multiplier: 1

Instrument :
 ECD_0
 ClientSampleId :
 AR1660CCC500

Integration File signal 1: autoint1.e
 Integration File signal 2: autoint2.e
 Quant Time: Jul 10 01:53:20 2021
 Quant Method : Z:\pestpcbsrv\HPCHEM1\ECD_0\methods\P0070821.M
 Quant Title : GC EXTRACTABLES
 QLast Update : Sat Jul 10 00:52:22 2021
 Response via : Initial Calibration
 Integrator: ChemStation 6890 Scale Mode: Small noise peaks clipped

Volume Inj. : 2 µl
 Signal #1 Phase : ZB-MR1 Signal #2 Phase: ZB-MR2
 Signal #1 Info : 30Mx0.32mmx 0.50µ Signal #2 Info : 30M x 0.32mm x 0.25µm

Compound	RT#1	RT#2	Resp#1	Resp#2	ng/ml	ng/ml

System Monitoring Compounds						
1) SA Tetrachlo...	5.019	4.227	3688218	1461340	55.164	50.959
2) SA Decachlor...	11.147	9.678	2740335	1318569	53.879	49.822
Target Compounds						
3) L1 AR-1016-1	6.349	5.507	1307648	600864	552.323	502.834
4) L1 AR-1016-2	6.373	5.529	1828547	801150	552.853	505.623
5) L1 AR-1016-3	6.440	5.726	1126487	442624	555.081	518.269
6) L1 AR-1016-4	6.548	5.775	917794	370565	560.150	515.326
7) L1 AR-1016-5	6.865	6.011	889039	461905	552.283	519.973
31) L7 AR-1260-1	8.046	7.127	1387945	785617	530.470	505.138
32) L7 AR-1260-2	8.313	7.325	1644655	942166	522.199	499.179
33) L7 AR-1260-3	8.680	7.486	1244266	881076	541.176	492.364
34) L7 AR-1260-4	8.913	7.976	1410420	720205	529.607	500.832
35) L7 AR-1260-5	9.251	8.224	2800002	1676458	530.604	497.546

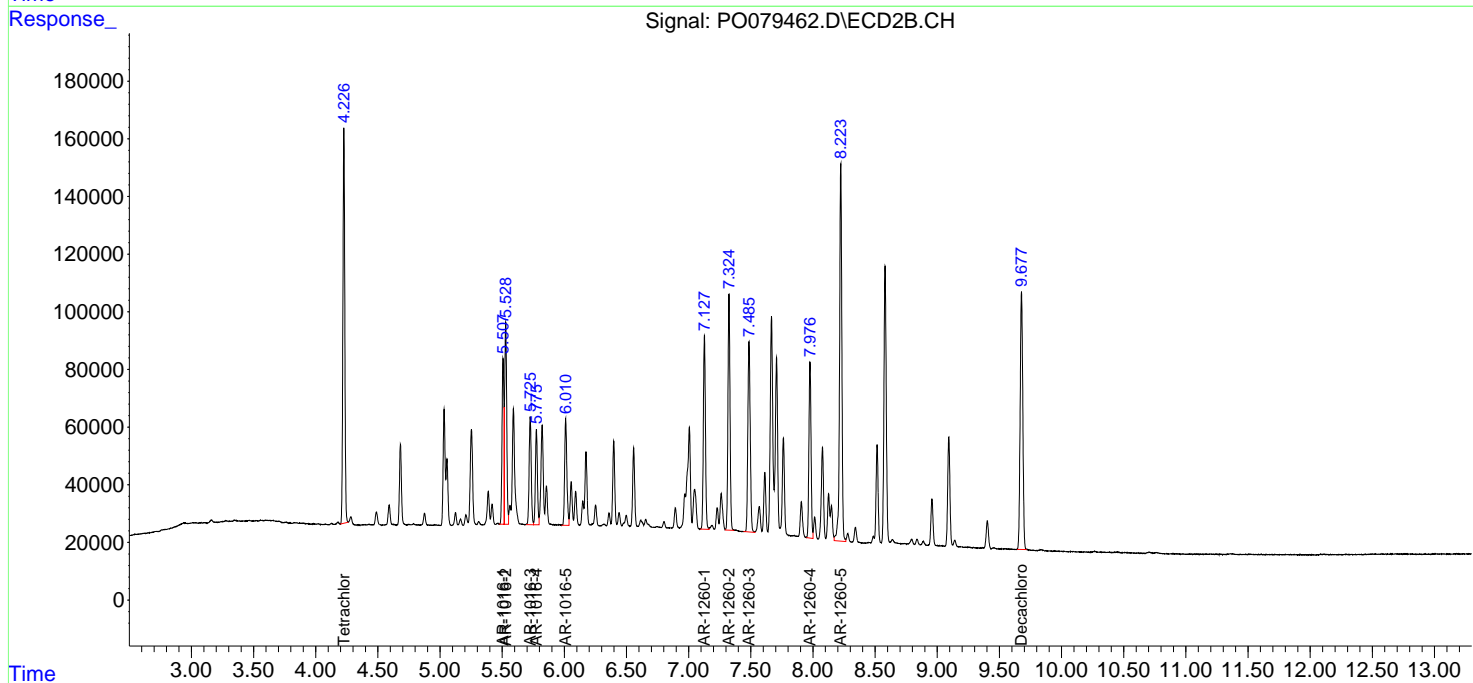
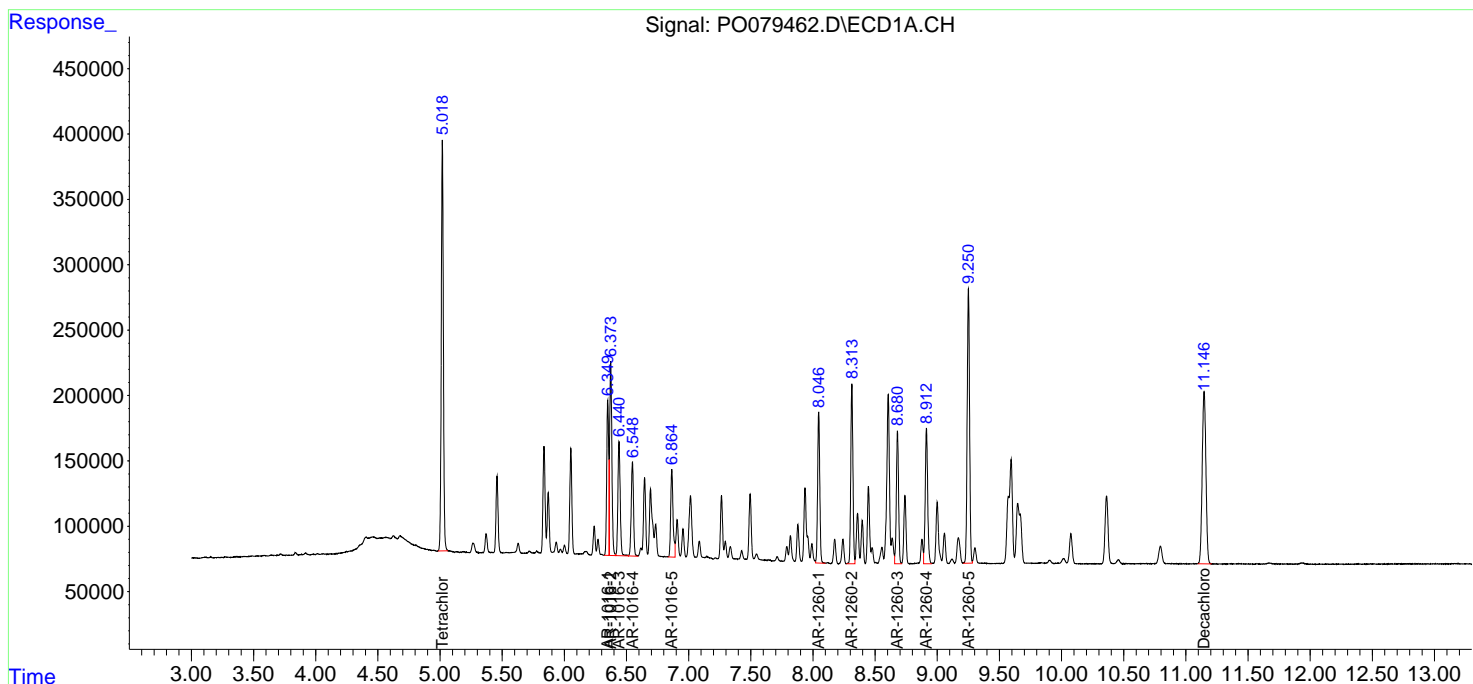
(f)=RT Delta > 1/2 Window (#)=Amounts differ by > 25% (m)=manual int.

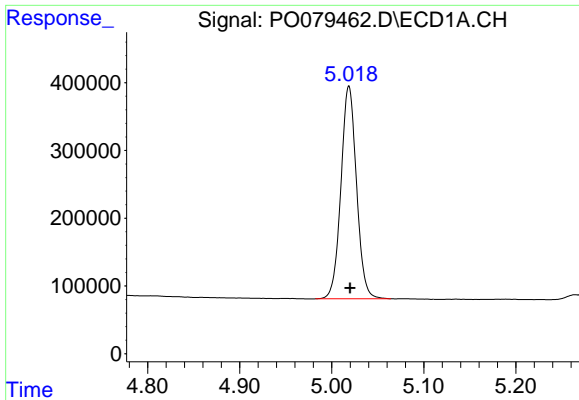
Data Path : Z:\pestpcbsrv\HPCHEM1\ECD_0\Data\P0070921\
 Data File : P0079462.D
 Signal(s) : Signal #1: ECD1A.CH Signal #2: ECD2B.CH
 Acq On : 09 Jul 2021 20:15
 Operator : DD\AJ
 Sample : AR1660CCC500
 Misc :
 ALS Vial : 3 Sample Multiplier: 1

Instrument :
 ECD_O
 ClientSampled :
 AR1660CCC500

Integration File signal 1: autoint1.e
 Integration File signal 2: autoint2.e
 Quant Time: Jul 10 01:53:20 2021
 Quant Method : Z:\pestpcbsrv\HPCHEM1\ECD_0\methods\P0070821.M
 Quant Title : GC EXTRACTABLES
 QLast Update : Sat Jul 10 00:52:22 2021
 Response via : Initial Calibration
 Integrator: ChemStation 6890 Scale Mode: Small noise peaks clipped

Volume Inj. : 2 µl
 Signal #1 Phase : ZB-MR1 Signal #2 Phase: ZB-MR2
 Signal #1 Info : 30Mx0.32mmx 0.50µ Signal #2 Info : 30M x 0.32mm x 0.25µm

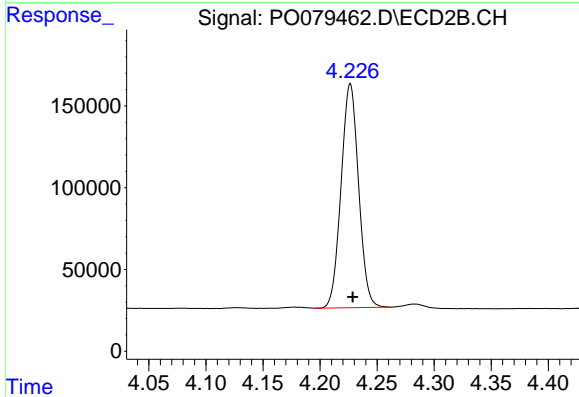




#1 Tetrachloro-m-xylene

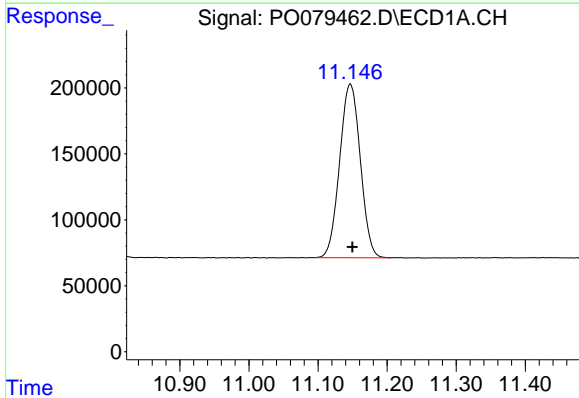
R.T.: 5.019 min
Delta R.T.: -0.001 min
Response: 3688218
Conc: 55.16 ng/ml

Instrument :
ECD_O
ClientSampleId :
AR1660CCC500



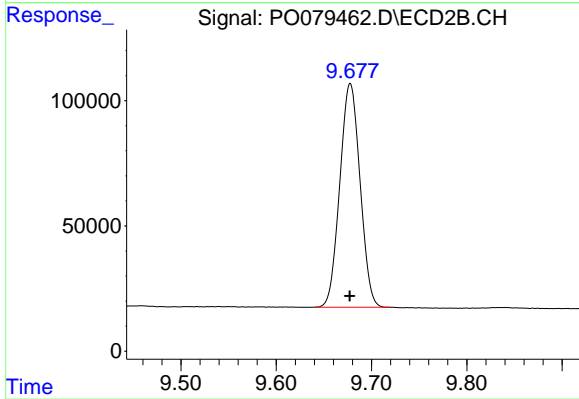
#1 Tetrachloro-m-xylene

R.T.: 4.227 min
Delta R.T.: -0.002 min
Response: 1461340
Conc: 50.96 ng/ml



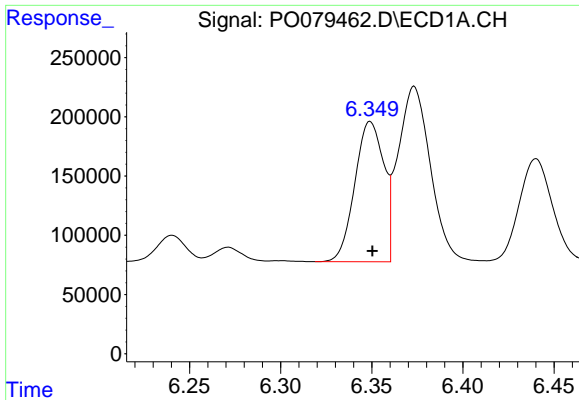
#2 Decachlorobiphenyl

R.T.: 11.147 min
Delta R.T.: -0.003 min
Response: 2740335
Conc: 53.88 ng/ml



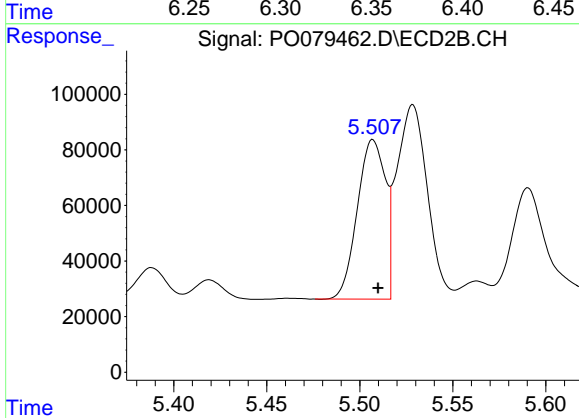
#2 Decachlorobiphenyl

R.T.: 9.678 min
Delta R.T.: 0.000 min
Response: 1318569
Conc: 49.82 ng/ml

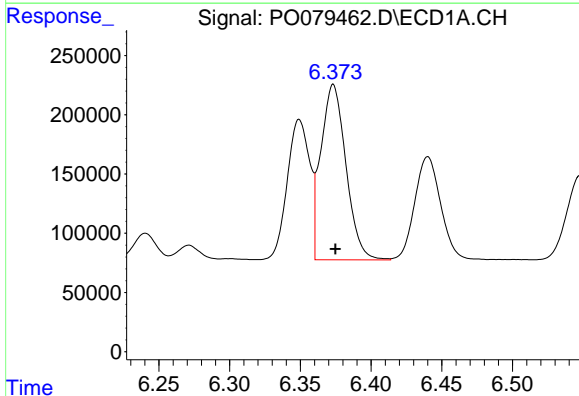


#3 AR-1016-1
 R.T.: 6.349 min
 Delta R.T.: -0.001 min
 Response: 1307648
 Conc: 552.32 ng/ml

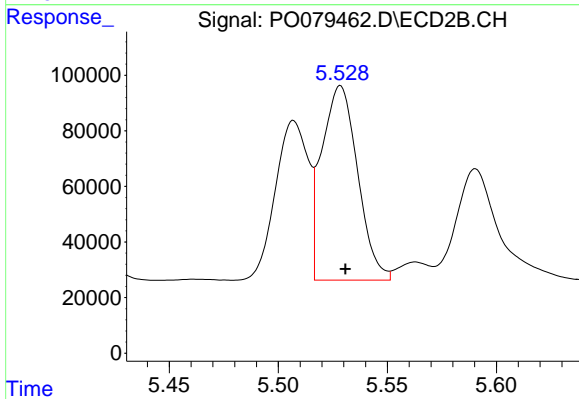
Instrument :
 ECD_O
 ClientSampleId :
 AR1660CCC500



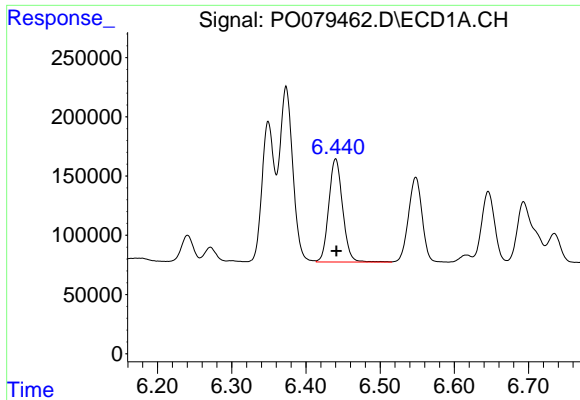
#3 AR-1016-1
 R.T.: 5.507 min
 Delta R.T.: -0.003 min
 Response: 600864
 Conc: 502.83 ng/ml



#4 AR-1016-2
 R.T.: 6.373 min
 Delta R.T.: -0.001 min
 Response: 1828547
 Conc: 552.85 ng/ml



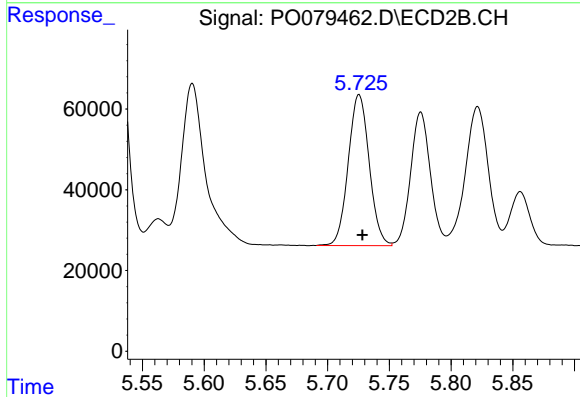
#4 AR-1016-2
 R.T.: 5.529 min
 Delta R.T.: -0.002 min
 Response: 801150
 Conc: 505.62 ng/ml



#5 AR-1016-3

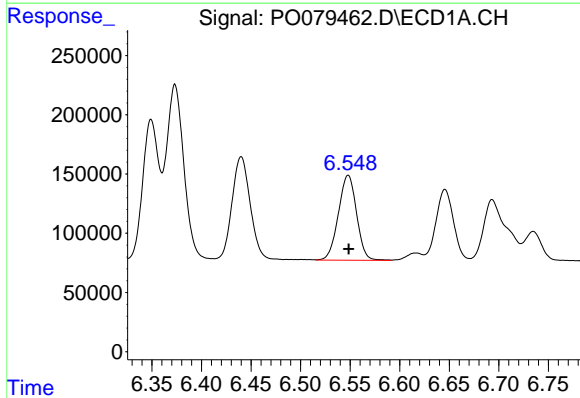
R.T.: 6.440 min
 Delta R.T.: 0.000 min
 Response: 1126487
 Conc: 555.08 ng/ml

Instrument :
 ECD_O
 ClientSampleId :
 AR1660CCC500



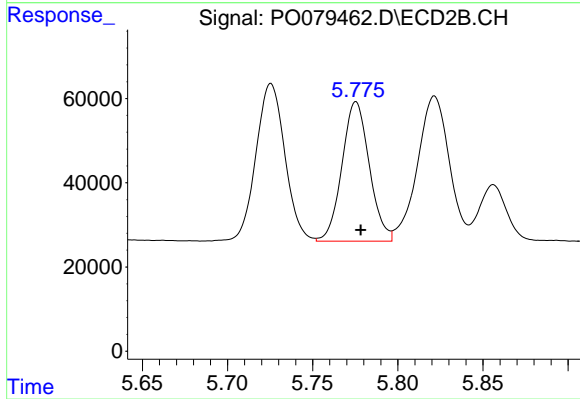
#5 AR-1016-3

R.T.: 5.726 min
 Delta R.T.: -0.003 min
 Response: 442624
 Conc: 518.27 ng/ml



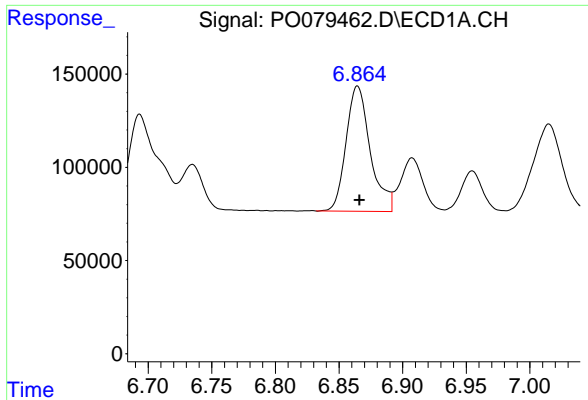
#6 AR-1016-4

R.T.: 6.548 min
 Delta R.T.: 0.000 min
 Response: 917794
 Conc: 560.15 ng/ml



#6 AR-1016-4

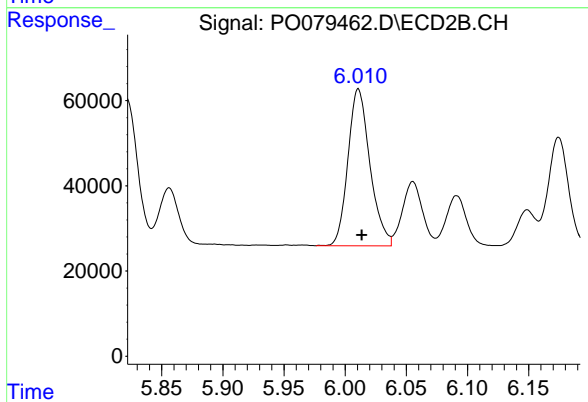
R.T.: 5.775 min
 Delta R.T.: -0.003 min
 Response: 370565
 Conc: 515.33 ng/ml



#7 AR-1016-5

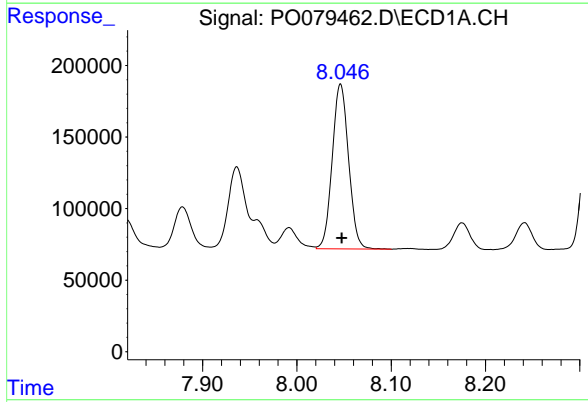
R.T.: 6.865 min
 Delta R.T.: -0.001 min
 Response: 889039
 Conc: 552.28 ng/ml

Instrument :
 ECD_O
 ClientSampleId :
 AR1660CCC500



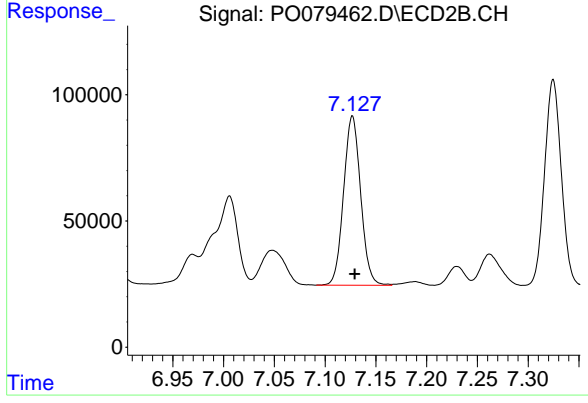
#7 AR-1016-5

R.T.: 6.011 min
 Delta R.T.: -0.003 min
 Response: 461905
 Conc: 519.97 ng/ml



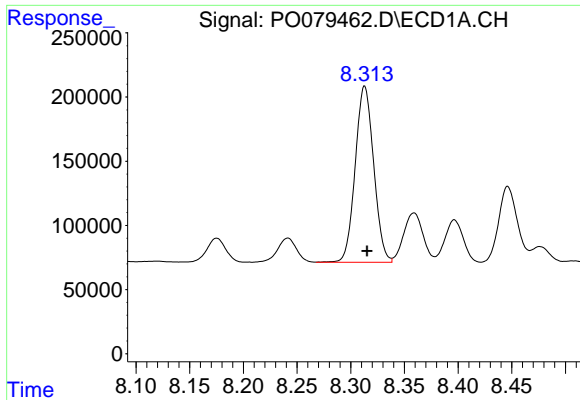
#31 AR-1260-1

R.T.: 8.046 min
 Delta R.T.: -0.001 min
 Response: 1387945
 Conc: 530.47 ng/ml



#31 AR-1260-1

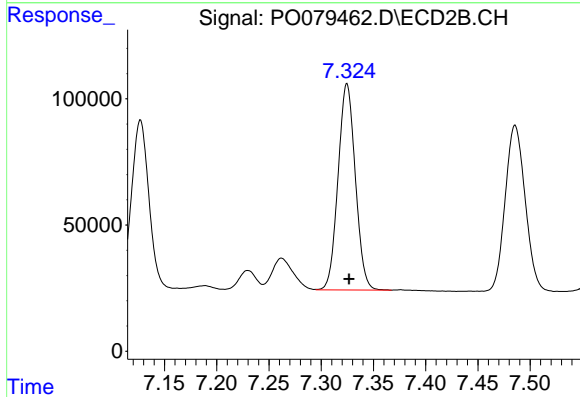
R.T.: 7.127 min
 Delta R.T.: -0.002 min
 Response: 785617
 Conc: 505.14 ng/ml



#32 AR-1260-2

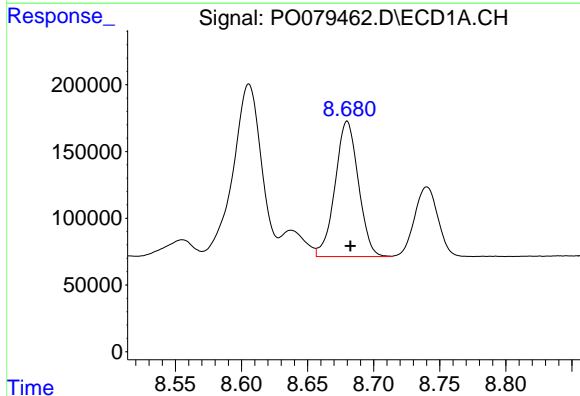
R.T.: 8.313 min
 Delta R.T.: -0.002 min
 Response: 1644655
 Conc: 522.20 ng/ml

Instrument :
 ECD_O
 ClientSampleId :
 AR1660CCC500



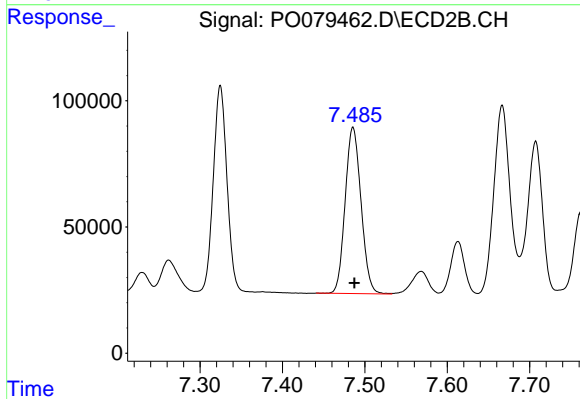
#32 AR-1260-2

R.T.: 7.325 min
 Delta R.T.: -0.002 min
 Response: 942166
 Conc: 499.18 ng/ml



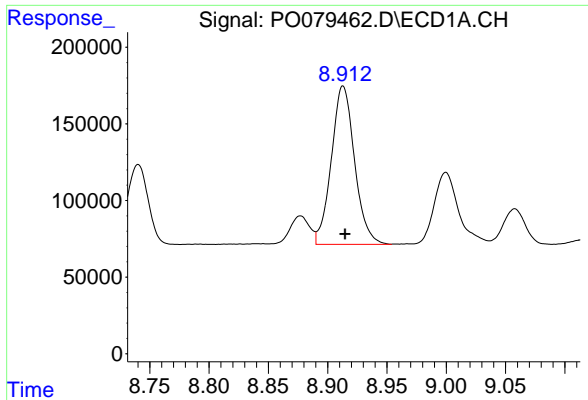
#33 AR-1260-3

R.T.: 8.680 min
 Delta R.T.: -0.002 min
 Response: 1244266
 Conc: 541.18 ng/ml



#33 AR-1260-3

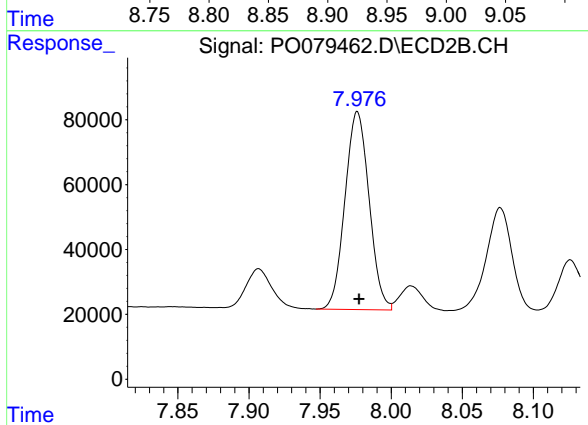
R.T.: 7.486 min
 Delta R.T.: -0.002 min
 Response: 881076
 Conc: 492.36 ng/ml



#34 AR-1260-4

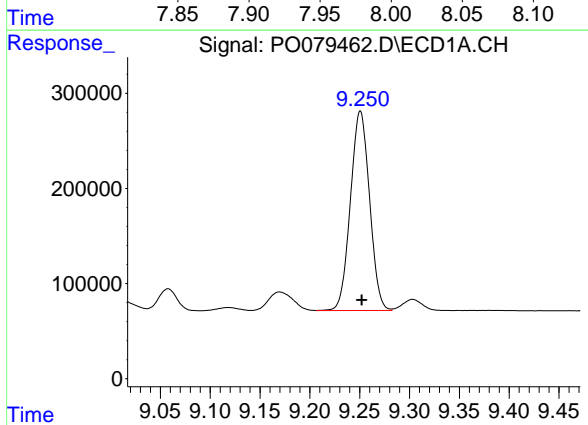
R.T.: 8.913 min
 Delta R.T.: -0.002 min
 Response: 1410420
 Conc: 529.61 ng/ml

Instrument :
 ECD_O
 ClientSampleId :
 AR1660CCC500



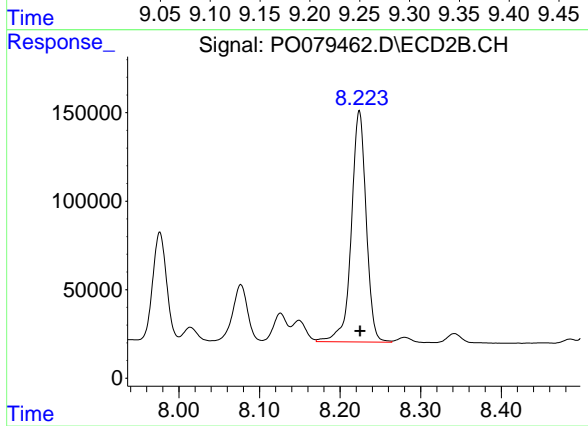
#34 AR-1260-4

R.T.: 7.976 min
 Delta R.T.: -0.001 min
 Response: 720205
 Conc: 500.83 ng/ml



#35 AR-1260-5

R.T.: 9.251 min
 Delta R.T.: -0.002 min
 Response: 2800002
 Conc: 530.60 ng/ml



#35 AR-1260-5

R.T.: 8.224 min
 Delta R.T.: 0.000 min
 Response: 1676458
 Conc: 497.55 ng/ml