

Data Path : Z:\pestpcbsrv\HPCHEM1\ECD\_0\Data\P0071025\  
 Data File : PO112181.D  
 Signal(s) : Signal #1: ECD1A.ch Signal #2: ECD2B.ch  
 Acq On : 10 Jul 2025 09:55  
 Operator : YP/AJ  
 Sample : AR1660CCC500  
 Misc :  
 ALS Vial : 3 Sample Multiplier: 1

Instrument :  
 ECD\_0  
 ClientSampleId :  
 AR1660CCC500

Integration File signal 1: autoint1.e  
 Integration File signal 2: autoint2.e  
 Quant Time: Jul 10 11:16:53 2025  
 Quant Method : Z:\pestpcbsrv\HPCHEM1\ECD\_0\methods\P0070825.M  
 Quant Title : GC EXTRACTABLES  
 QLast Update : Wed Jul 09 10:50:50 2025  
 Response via : Initial Calibration  
 Integrator: ChemStation

Volume Inj. : 2 µl  
 Signal #1 Phase : ZB-MR1 Signal #2 Phase: ZB-MR2  
 Signal #1 Info : 30Mx0.32mmx 0.50µ Signal #2 Info : 30M x 0.32mm x 0.25µm

Compound	RT#1	RT#2	Resp#1	Resp#2	ng/ml	ng/ml
System Monitoring Compounds						
1) SA Tetrachlo...	3.670	3.665	516.1E6	315.2E6	52.159	49.472
2) SA Decachlor...	8.699	8.647	362.9E6	87258999	53.083	50.630
Target Compounds						
3) L1 AR-1016-1	4.758	4.759	169.9E6	154.7E6	499.431	694.103 #
4) L1 AR-1016-2	4.776	4.791	255.2E6	11230021	513.208	34.124 #
5) L1 AR-1016-3	4.833	4.934	161.5E6	80934243	498.863	476.457
6) L1 AR-1016-4	4.953	4.977	131.2E6	64775266	510.774	472.028
7) L1 AR-1016-5	5.210	5.189	141.1E6	85860690	515.743	497.887
8) L2 AR-1221-1	3.881	3.873	16170897	11016556	138.670	133.867
9) L2 AR-1221-2	3.969	3.960	22390773	16188422	284.001	272.746
10) L2 AR-1221-3	4.044	4.034	87362632	59038419	324.067	312.742
11) L3 AR-1232-1	4.044	4.034	87362632	59038419	406.967	393.329
12) L3 AR-1232-2	4.536	4.759	128.7E6	154.7E6	1132.926	1010.349
13) L3 AR-1232-3	4.776	4.934	255.2E6	80934243	1114.428	1071.891
14) L3 AR-1232-4	4.953	5.019	131.2E6	77647961	1147.597	1176.695
15) L3 AR-1232-5	4.996	5.189	99805582	85860690	1359.745	1156.218
16) L4 AR-1242-1	4.758	4.741	169.9E6	105.8E6	586.486	545.633
17) L4 AR-1242-2	4.776	4.759	255.2E6	154.7E6	599.207	545.857
18) L4 AR-1242-3	4.833	4.934	161.5E6	80934243	590.053	555.572
19) L4 AR-1242-4	4.953	5.019	131.2E6	77647961	582.139	547.431
20) L4 AR-1242-5	5.604	5.539	34603759	86265589	163.479	474.680 #
21) L5 AR-1248-1	4.758	4.741	169.9E6	105.8E6	748.648	685.215
22) L5 AR-1248-2	4.996	4.977	99805582	64775266	323.702	314.798
23) L5 AR-1248-3	5.210	5.019	141.1E6	77647961	346.507	361.492
24) L5 AR-1248-4	5.563	5.189	138.5E6	85860690	239.969	331.859 #
25) L5 AR-1248-5	5.604	5.580	34603759	24013730	88.658	95.844
26) L6 AR-1254-1	5.563	5.539	138.5E6	86265589	225.157	226.319
27) L6 AR-1254-2	5.713	5.687	99115920	62163922	185.026	187.347
28) L6 AR-1254-3	6.132	6.104	197.3E6	109.0E6	235.045	226.151
29) L6 AR-1254-4	6.346	6.316	29745903	14174638	61.839	54.373
30) L6 AR-1254-5	6.764	6.731	336.9E6	152.1E6	435.359	426.903
31) L7 AR-1260-1	6.248	6.218	249.5E6	137.3E6	497.792	489.328
32) L7 AR-1260-2	6.437	6.406	371.9E6	167.6E6	503.843	492.957
33) L7 AR-1260-3	6.803	6.558	326.5E6	123.8E6	498.138	449.238
34) L7 AR-1260-4	7.063	7.063	225.9E6	11116803	519.115	55.405 #
35) L7 AR-1260-5	7.306	7.269	675.2E6	212.6E6	534.808	474.810
36) L8 AR-1262-1	6.803	6.770	326.5E6	135.5E6	319.590	332.750
37) L8 AR-1262-2	7.306	7.269	675.2E6	212.6E6	411.874	414.763
38) L8 AR-1262-3	7.589	7.551	165.0E6	48094831	257.095	267.902
39) L8 AR-1262-4	7.652	7.615	434.4E6	117.6E6	405.396	404.142
40) L8 AR-1262-5	8.149	8.108	145.7E6	34122760	325.168	322.572
41) L9 AR-1268-1	7.589	7.551	165.0E6	48094831	89.825	97.862

Data Path : Z:\pestpcbsrv\HPCHEM1\ECD\_0\Data\P0071025\  
 Data File : P0112181.D  
 Signal(s) : Signal #1: ECD1A.ch Signal #2: ECD2B.ch  
 Acq On : 10 Jul 2025 09:55  
 Operator : YP/AJ  
 Sample : AR1660CCC500  
 Misc :  
 ALS Vial : 3 Sample Multiplier: 1

Instrument :  
 ECD\_0  
 ClientSampleId :  
 AR1660CCC500

Integration File signal 1: autoint1.e  
 Integration File signal 2: autoint2.e  
 Quant Time: Jul 10 11:16:53 2025  
 Quant Method : Z:\pestpcbsrv\HPCHEM1\ECD\_0\methods\P0070825.M  
 Quant Title : GC EXTRACTABLES  
 QLast Update : Wed Jul 09 10:50:50 2025  
 Response via : Initial Calibration  
 Integrator: ChemStation

Volume Inj. : 2 µl  
 Signal #1 Phase : ZB-MR1 Signal #2 Phase: ZB-MR2  
 Signal #1 Info : 30Mx0.32mmx 0.50µ Signal #2 Info : 30M x 0.32mm x 0.25µm

	Compound	RT#1	RT#2	Resp#1	Resp#2	ng/ml	ng/ml
42)	L9 AR-1268-2	7.652	7.615	434.4E6	117.6E6	278.861	281.823
43)	L9 AR-1268-3	7.860	7.820	5577115	2217964	4.291	7.010 #
44)	L9 AR-1268-4	8.149	8.108	145.7E6	34122760	303.328	306.001
45)	L9 AR-1268-5	8.443	8.396	34954784	8457568	10.710	11.641

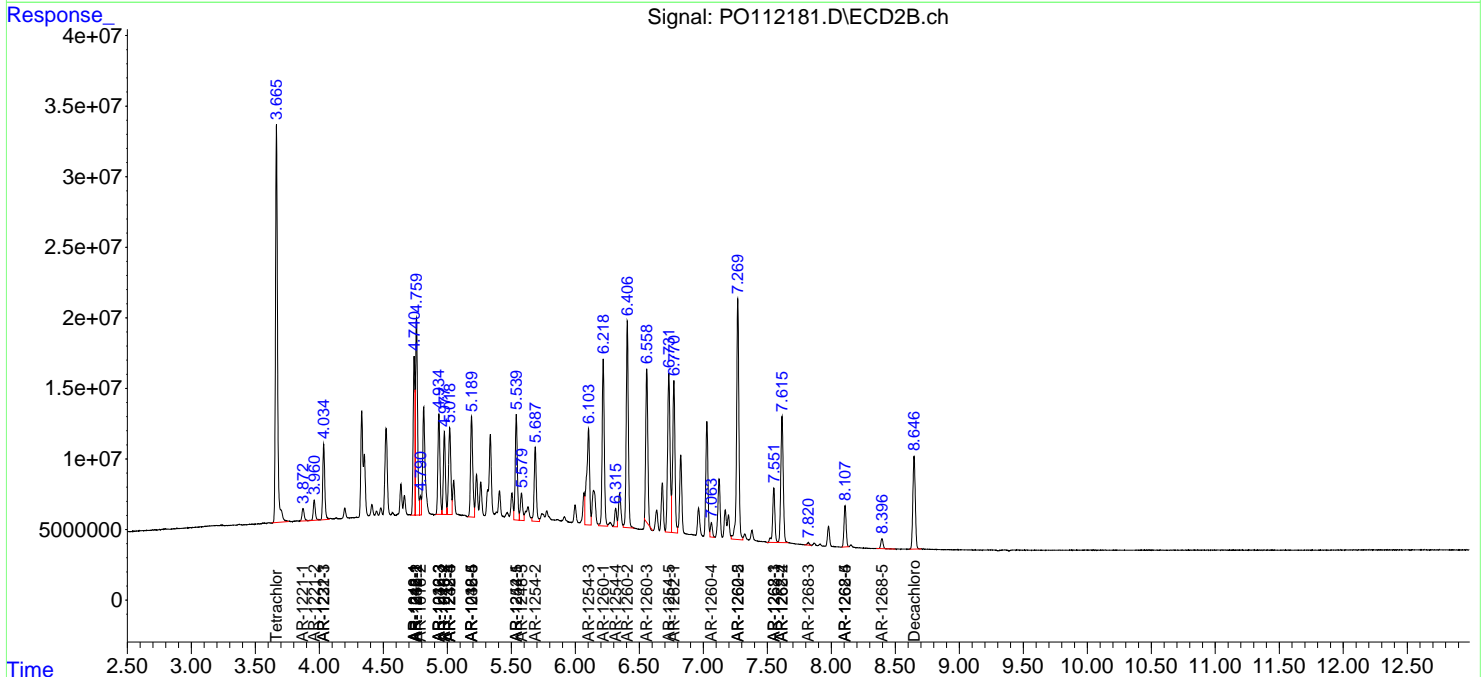
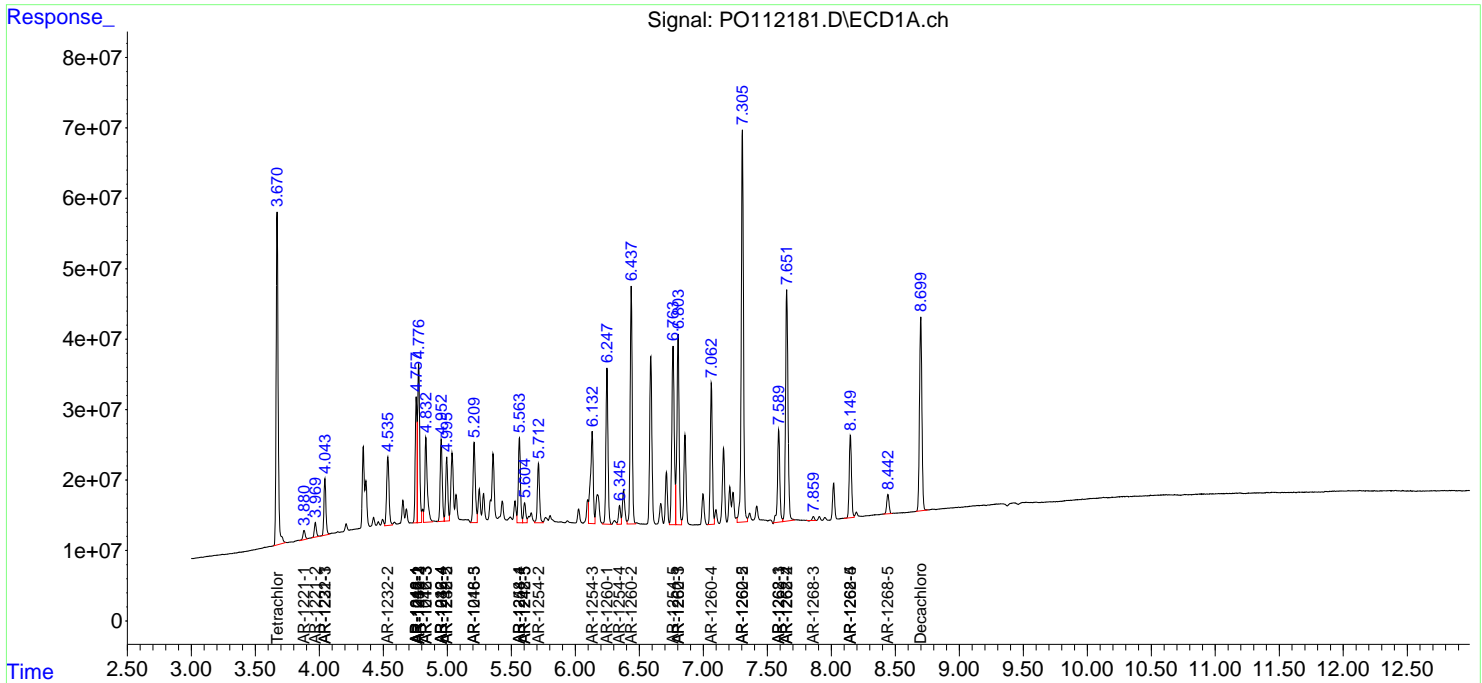
(f)=RT Delta > 1/2 Window (#)=Amounts differ by > 25% (m)=manual int.

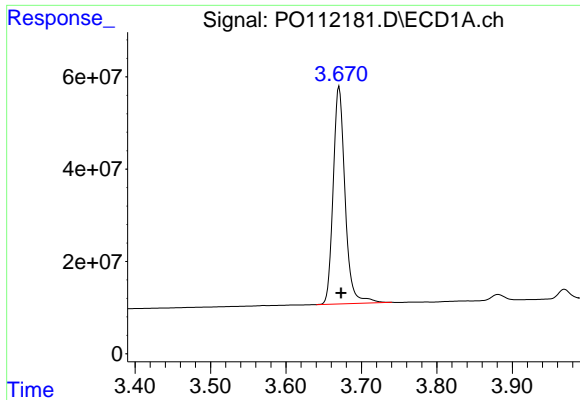
Data Path : Z:\pestpcbsrv\HPCHEM1\ECD\_O\Data\P0071025\  
 Data File : P0112181.D  
 Signal(s) : Signal #1: ECD1A.ch Signal #2: ECD2B.ch  
 Acq On : 10 Jul 2025 09:55  
 Operator : YP/AJ  
 Sample : AR1660CCC500  
 Misc :  
 ALS Vial : 3 Sample Multiplier: 1

Instrument :  
 ECD\_O  
 ClientSampleId :  
 AR1660CCC500

Integration File signal 1: autoint1.e  
 Integration File signal 2: autoint2.e  
 Quant Time: Jul 10 11:16:53 2025  
 Quant Method : Z:\pestpcbsrv\HPCHEM1\ECD\_O\methods\P0070825.M  
 Quant Title : GC EXTRACTABLES  
 QLast Update : Wed Jul 09 10:50:50 2025  
 Response via : Initial Calibration  
 Integrator: ChemStation

Volume Inj. : 2 µl  
 Signal #1 Phase : ZB-MR1 Signal #2 Phase: ZB-MR2  
 Signal #1 Info : 30Mx0.32mmx 0.50µ Signal #2 Info : 30M x 0.32mm x 0.25µm

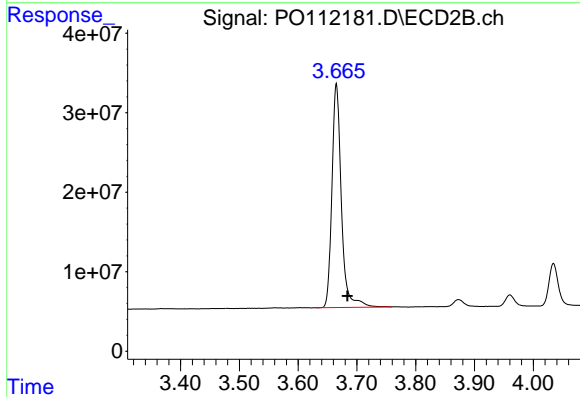




#1 Tetrachloro-m-xylene

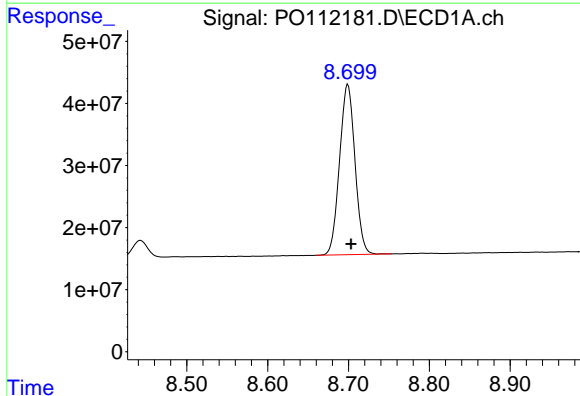
R.T.: 3.670 min  
 Delta R.T.: -0.003 min  
 Response: 516102295  
 Conc: 52.16 ng/ml

Instrument :  
 ECD\_O  
 ClientSampleId :  
 AR1660CCC500



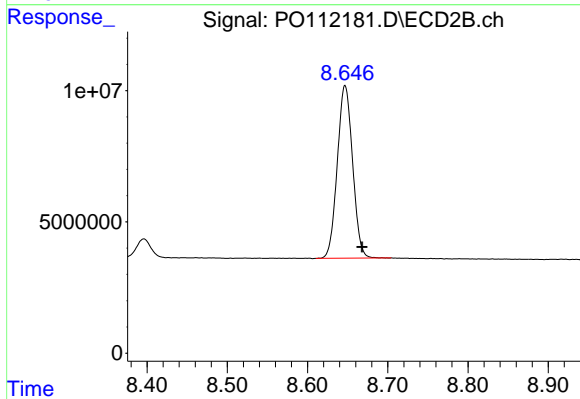
#1 Tetrachloro-m-xylene

R.T.: 3.665 min  
 Delta R.T.: -0.019 min  
 Response: 315190286  
 Conc: 49.47 ng/ml



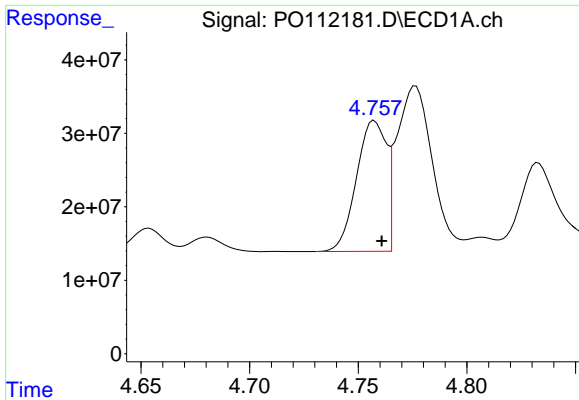
#2 Decachlorobiphenyl

R.T.: 8.699 min  
 Delta R.T.: -0.004 min  
 Response: 362933299  
 Conc: 53.08 ng/ml



#2 Decachlorobiphenyl

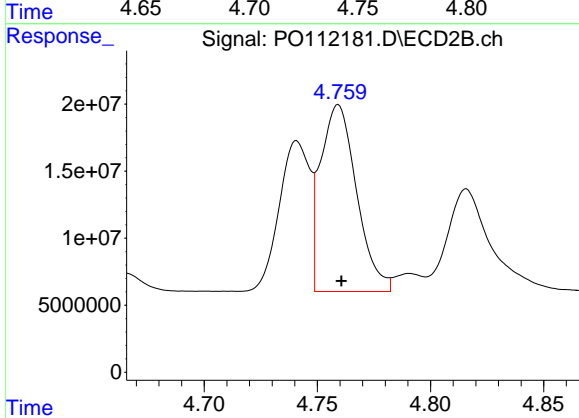
R.T.: 8.647 min  
 Delta R.T.: -0.021 min  
 Response: 87258999  
 Conc: 50.63 ng/ml



#3 AR-1016-1

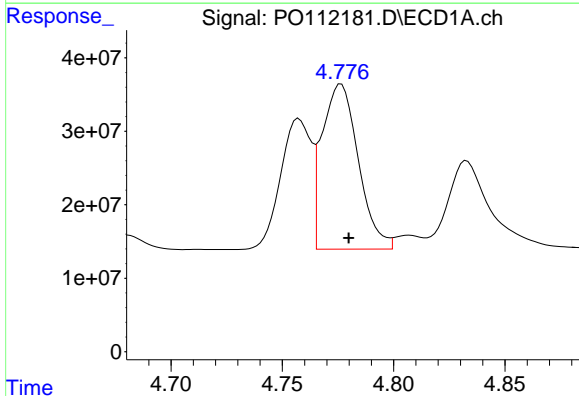
R.T.: 4.758 min  
 Delta R.T.: -0.003 min  
 Response: 169867861  
 Conc: 499.43 ng/ml

Instrument :  
 ECD\_O  
 ClientSampleId :  
 AR1660CCC500



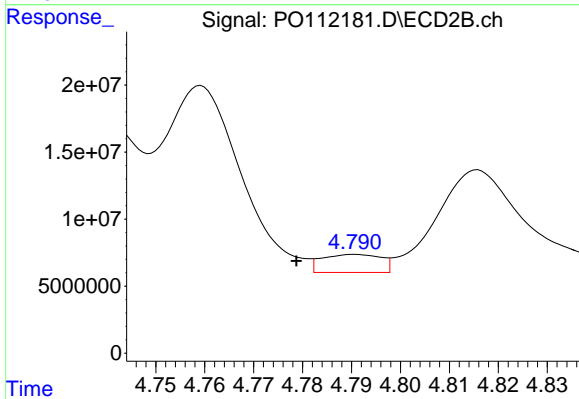
#3 AR-1016-1

R.T.: 4.759 min  
 Delta R.T.: -0.001 min  
 Response: 154669967  
 Conc: 694.10 ng/ml



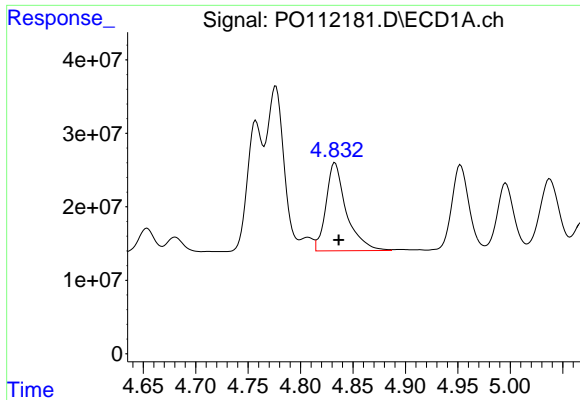
#4 AR-1016-2

R.T.: 4.776 min  
 Delta R.T.: -0.003 min  
 Response: 255213877  
 Conc: 513.21 ng/ml



#4 AR-1016-2

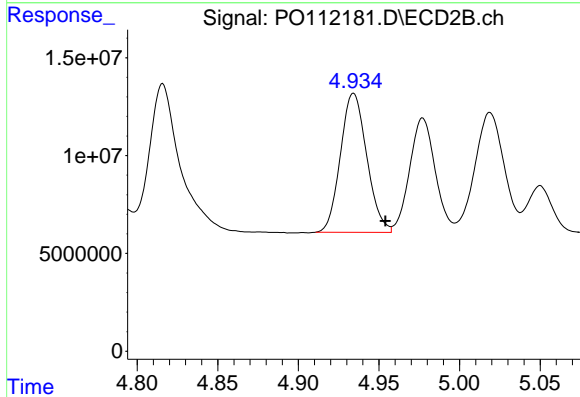
R.T.: 4.791 min  
 Delta R.T.: 0.012 min  
 Response: 11230021  
 Conc: 34.12 ng/ml



#5 AR-1016-3

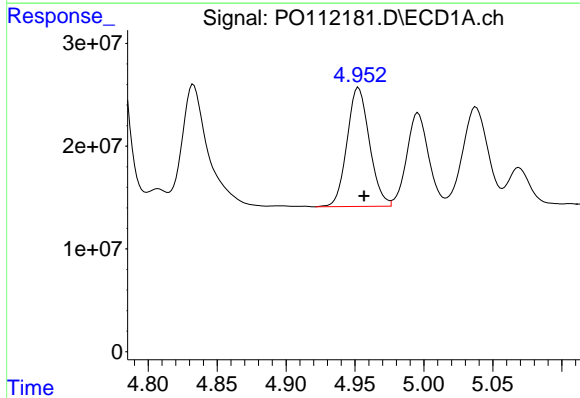
R.T.: 4.833 min  
 Delta R.T.: -0.004 min  
 Response: 161488853  
 Conc: 498.86 ng/ml

Instrument :  
 ECD\_O  
 ClientSampleId :  
 AR1660CCC500



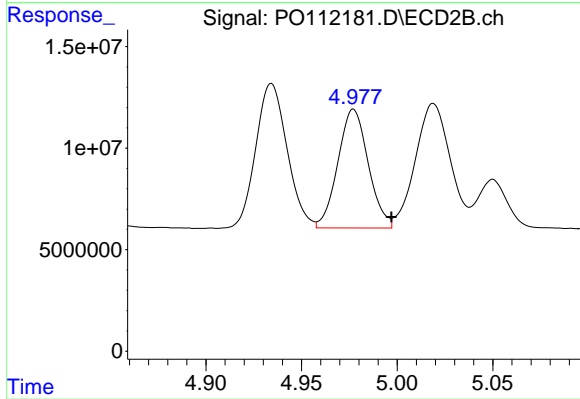
#5 AR-1016-3

R.T.: 4.934 min  
 Delta R.T.: -0.020 min  
 Response: 80934243  
 Conc: 476.46 ng/ml



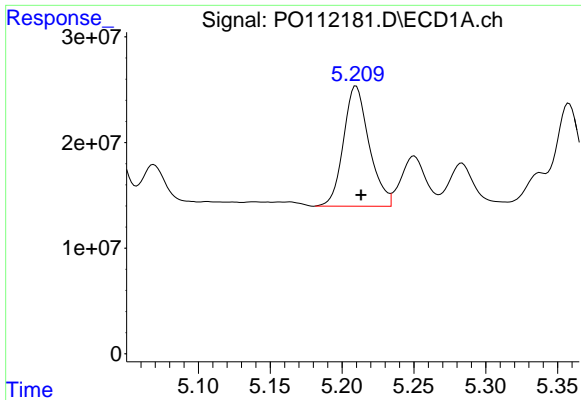
#6 AR-1016-4

R.T.: 4.953 min  
 Delta R.T.: -0.004 min  
 Response: 131166508  
 Conc: 510.77 ng/ml



#6 AR-1016-4

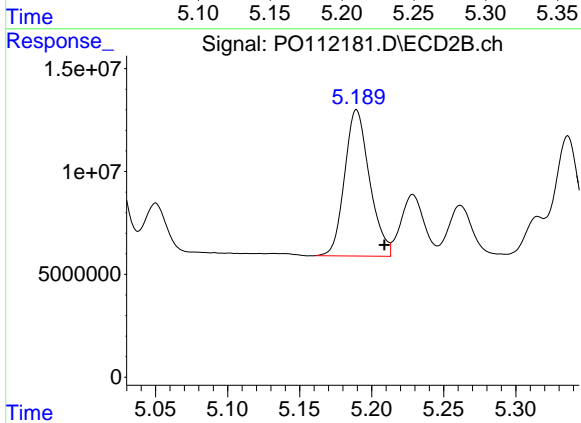
R.T.: 4.977 min  
 Delta R.T.: -0.020 min  
 Response: 64775266  
 Conc: 472.03 ng/ml



#7 AR-1016-5

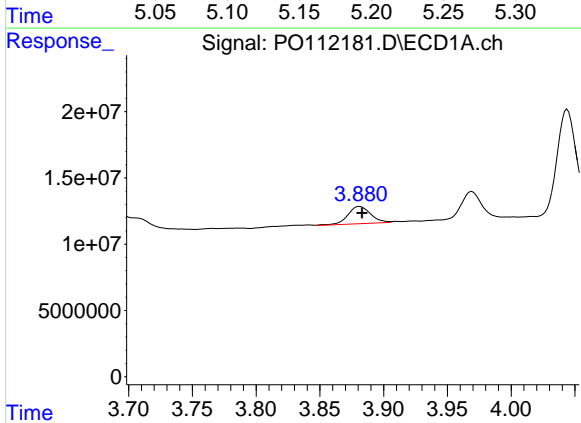
R.T.: 5.210 min  
 Delta R.T.: -0.003 min  
 Response: 141139162  
 Conc: 515.74 ng/ml

Instrument :  
 ECD\_O  
 ClientSampleId :  
 AR1660CCC500



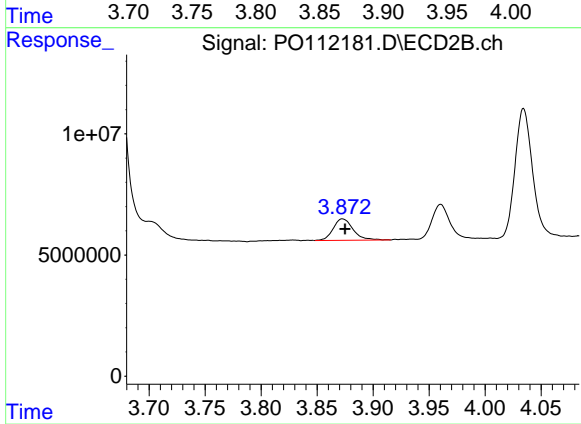
#7 AR-1016-5

R.T.: 5.189 min  
 Delta R.T.: -0.019 min  
 Response: 85860690  
 Conc: 497.89 ng/ml



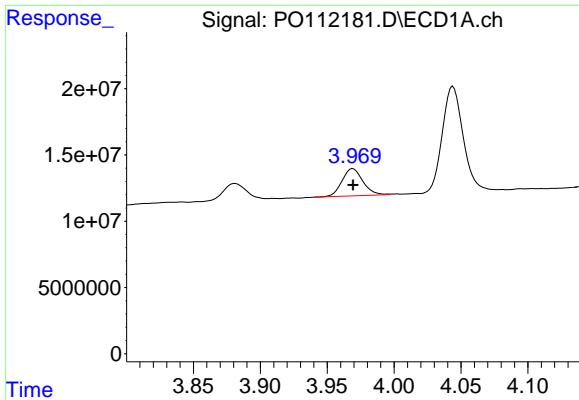
#8 AR-1221-1

R.T.: 3.881 min  
 Delta R.T.: -0.002 min  
 Response: 16170897  
 Conc: 138.67 ng/ml



#8 AR-1221-1

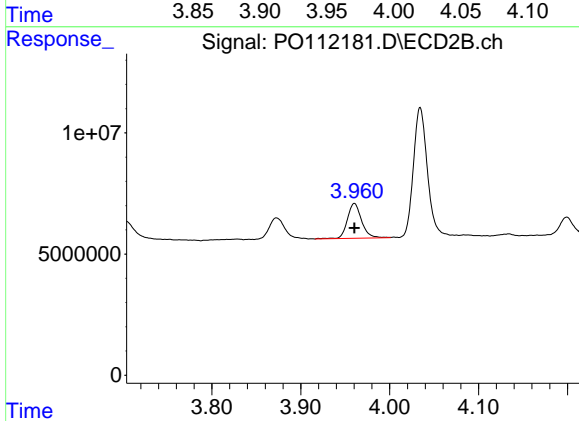
R.T.: 3.873 min  
 Delta R.T.: -0.002 min  
 Response: 11016556  
 Conc: 133.87 ng/ml



#9 AR-1221-2

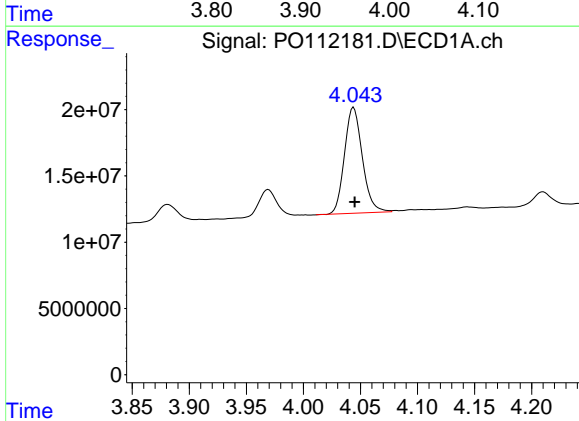
R.T.: 3.969 min  
 Delta R.T.: 0.000 min  
 Response: 22390773  
 Conc: 284.00 ng/ml

Instrument :  
 ECD\_O  
 ClientSampleId :  
 AR1660CCC500



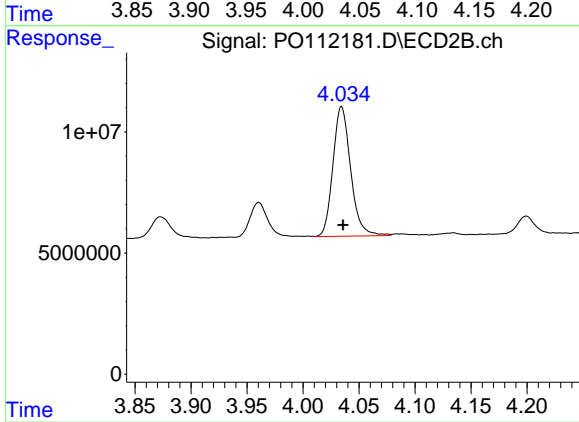
#9 AR-1221-2

R.T.: 3.960 min  
 Delta R.T.: 0.000 min  
 Response: 16188422  
 Conc: 272.75 ng/ml



#10 AR-1221-3

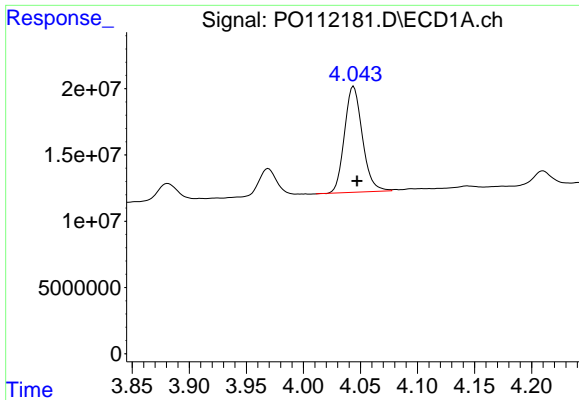
R.T.: 4.044 min  
 Delta R.T.: 0.000 min  
 Response: 87362632  
 Conc: 324.07 ng/ml



#10 AR-1221-3

R.T.: 4.034 min  
 Delta R.T.: -0.001 min  
 Response: 59038419  
 Conc: 312.74 ng/ml

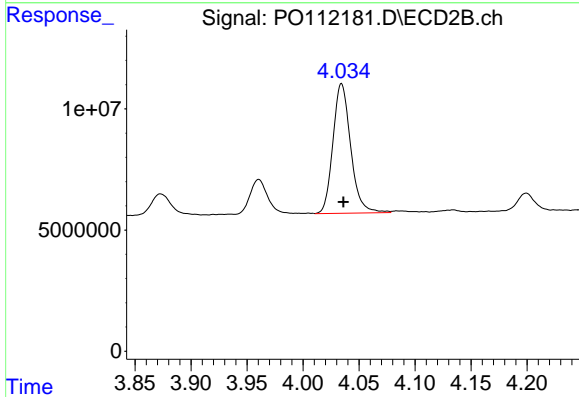




#11 AR-1232-1

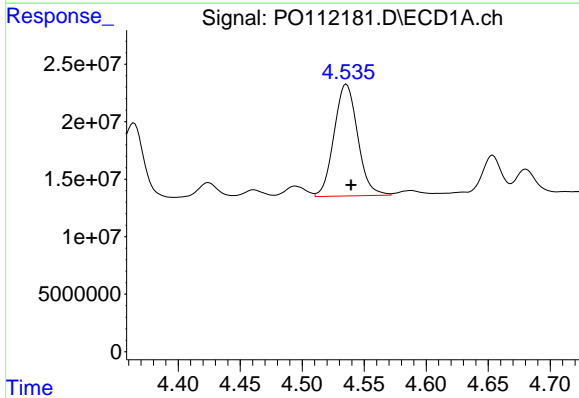
R.T.: 4.044 min  
 Delta R.T.: -0.003 min  
 Response: 87362632  
 Conc: 406.97 ng/ml

Instrument :  
 ECD\_O  
 ClientSampleId :  
 AR1660CCC500



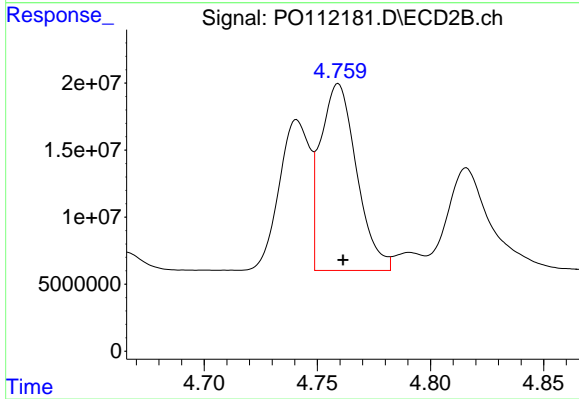
#11 AR-1232-1

R.T.: 4.034 min  
 Delta R.T.: -0.002 min  
 Response: 59038419  
 Conc: 393.33 ng/ml



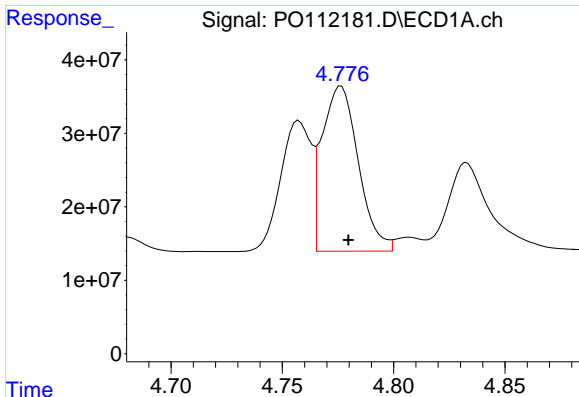
#12 AR-1232-2

R.T.: 4.536 min  
 Delta R.T.: -0.004 min  
 Response: 128742298  
 Conc: 1132.93 ng/ml



#12 AR-1232-2

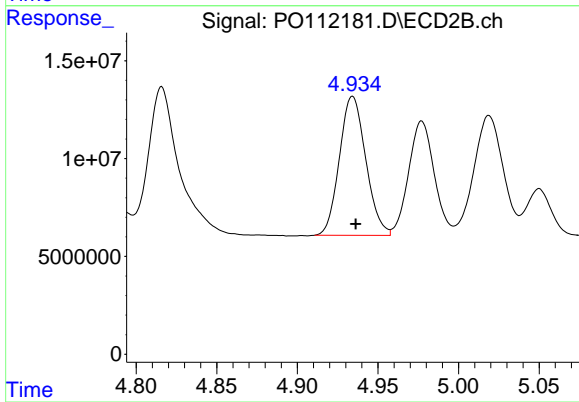
R.T.: 4.759 min  
 Delta R.T.: -0.002 min  
 Response: 154669967  
 Conc: 1010.35 ng/ml



#13 AR-1232-3

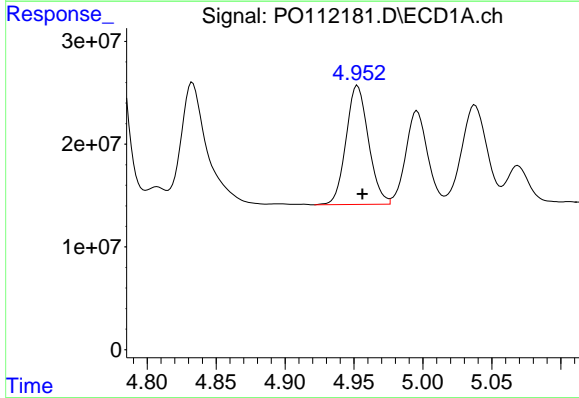
R.T.: 4.776 min  
 Delta R.T.: -0.003 min  
 Response: 255213877  
 Conc: 1114.43 ng/m

Instrument :  
 ECD\_O  
 ClientSampleId :  
 AR1660CCC500



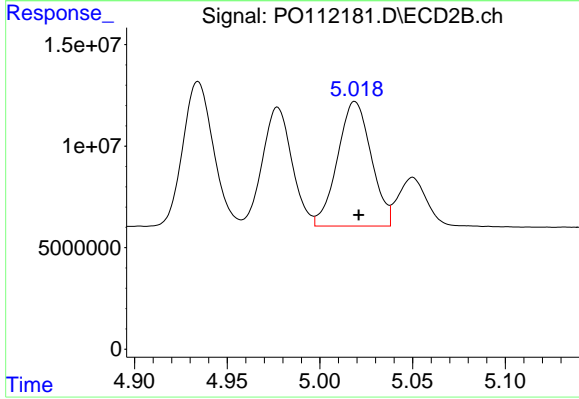
#13 AR-1232-3

R.T.: 4.934 min  
 Delta R.T.: -0.002 min  
 Response: 80934243  
 Conc: 1071.89 ng/ml



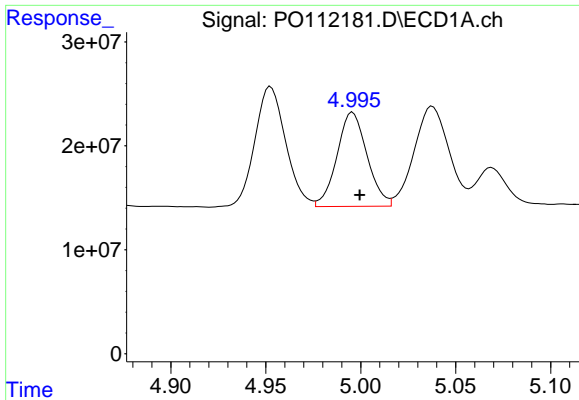
#14 AR-1232-4

R.T.: 4.953 min  
 Delta R.T.: -0.004 min  
 Response: 131166508  
 Conc: 1147.60 ng/ml



#14 AR-1232-4

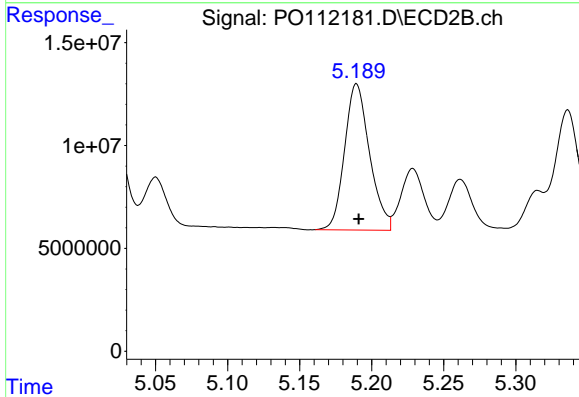
R.T.: 5.019 min  
 Delta R.T.: -0.002 min  
 Response: 77647961  
 Conc: 1176.69 ng/ml



#15 AR-1232-5

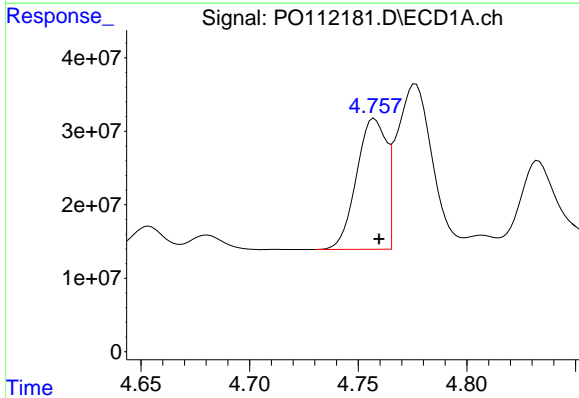
R.T.: 4.996 min  
 Delta R.T.: -0.004 min  
 Response: 99805582  
 Conc: 1359.74 ng/ml

Instrument :  
 ECD\_O  
 ClientSampleId :  
 AR1660CCC500



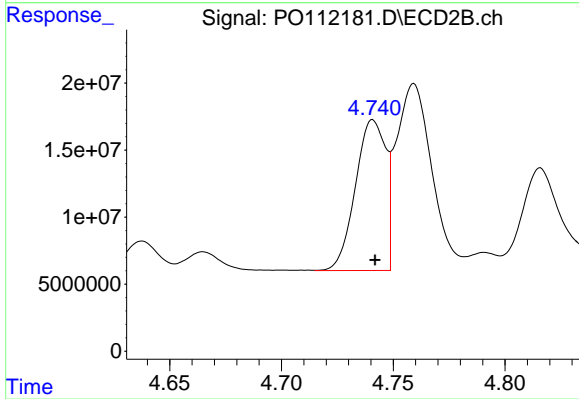
#15 AR-1232-5

R.T.: 5.189 min  
 Delta R.T.: -0.001 min  
 Response: 85860690  
 Conc: 1156.22 ng/ml



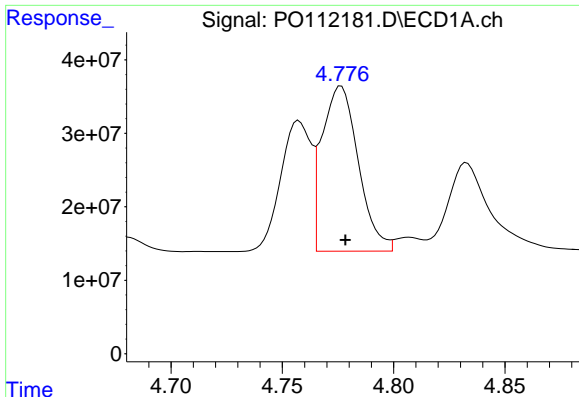
#16 AR-1242-1

R.T.: 4.758 min  
 Delta R.T.: -0.002 min  
 Response: 169867861  
 Conc: 586.49 ng/ml



#16 AR-1242-1

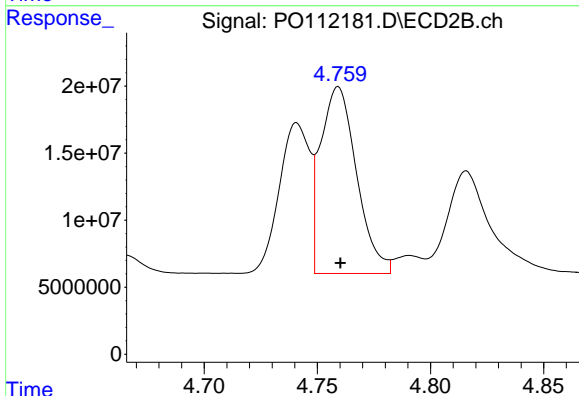
R.T.: 4.741 min  
 Delta R.T.: 0.000 min  
 Response: 105775427  
 Conc: 545.63 ng/ml



#17 AR-1242-2

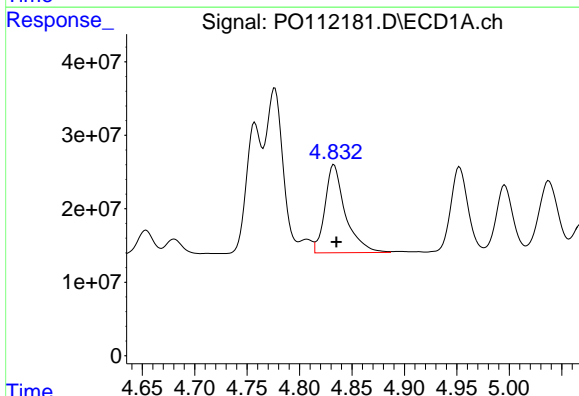
R.T.: 4.776 min  
 Delta R.T.: -0.002 min  
 Response: 255213877  
 Conc: 599.21 ng/ml

Instrument :  
 ECD\_O  
 ClientSampleId :  
 AR1660CCC500



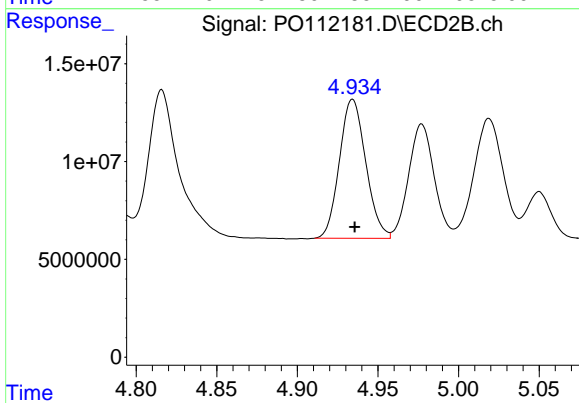
#17 AR-1242-2

R.T.: 4.759 min  
 Delta R.T.: -0.001 min  
 Response: 154669967  
 Conc: 545.86 ng/ml



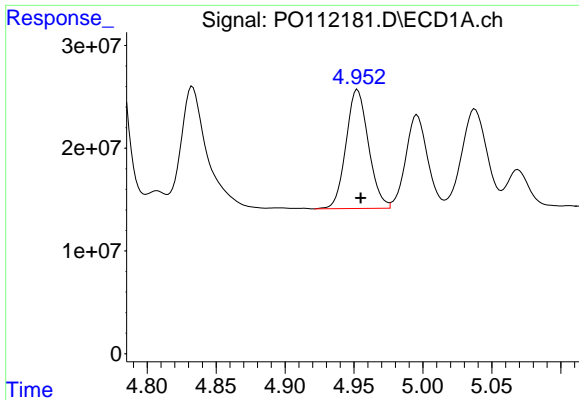
#18 AR-1242-3

R.T.: 4.833 min  
 Delta R.T.: -0.002 min  
 Response: 161488853  
 Conc: 590.05 ng/ml



#18 AR-1242-3

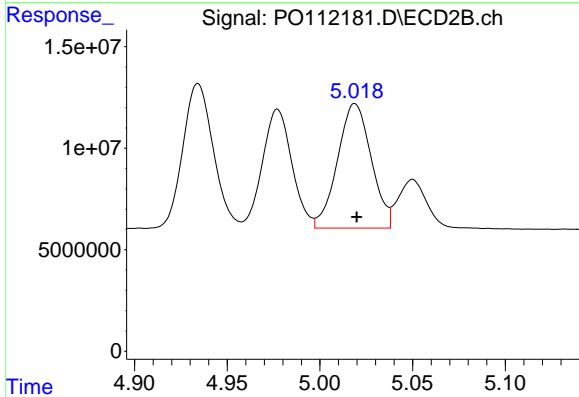
R.T.: 4.934 min  
 Delta R.T.: -0.001 min  
 Response: 80934243  
 Conc: 555.57 ng/ml



#19 AR-1242-4

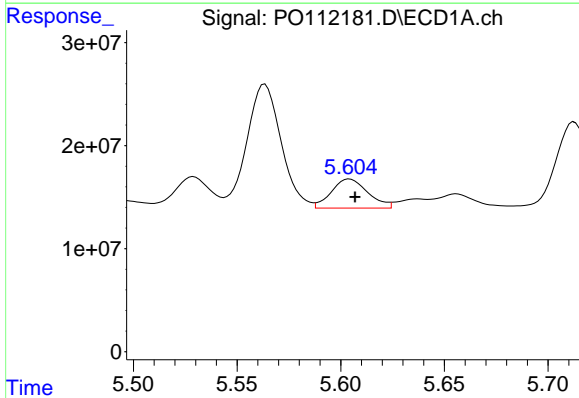
R.T.: 4.953 min  
 Delta R.T.: -0.002 min  
 Response: 131166508  
 Conc: 582.14 ng/ml

Instrument :  
 ECD\_O  
 ClientSampleId :  
 AR1660CCC500



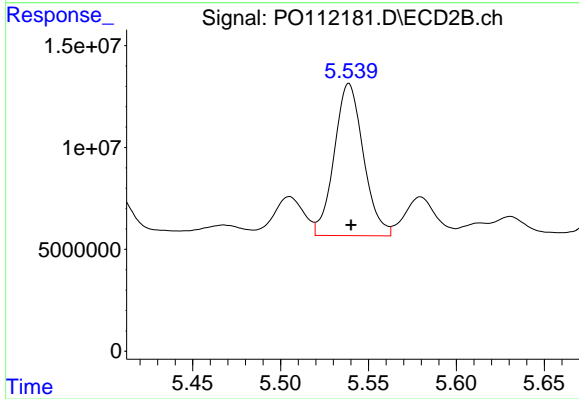
#19 AR-1242-4

R.T.: 5.019 min  
 Delta R.T.: -0.001 min  
 Response: 77647961  
 Conc: 547.43 ng/ml



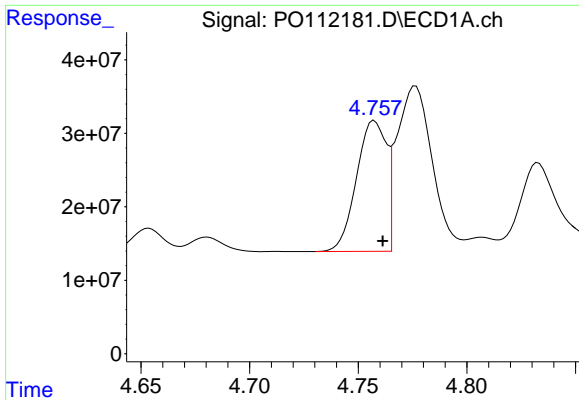
#20 AR-1242-5

R.T.: 5.604 min  
 Delta R.T.: -0.003 min  
 Response: 34603759  
 Conc: 163.48 ng/ml



#20 AR-1242-5

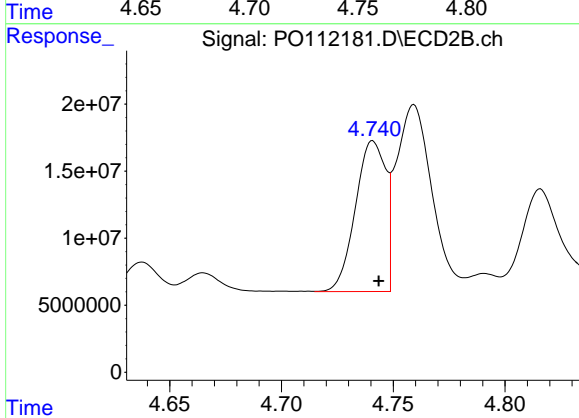
R.T.: 5.539 min  
 Delta R.T.: -0.001 min  
 Response: 86265589  
 Conc: 474.68 ng/ml



#21 AR-1248-1

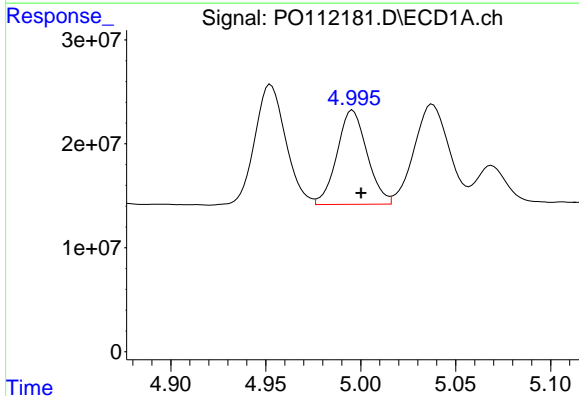
R.T.: 4.758 min  
 Delta R.T.: -0.004 min  
 Response: 169867861  
 Conc: 748.65 ng/ml

Instrument :  
 ECD\_O  
 ClientSampleId :  
 AR1660CCC500



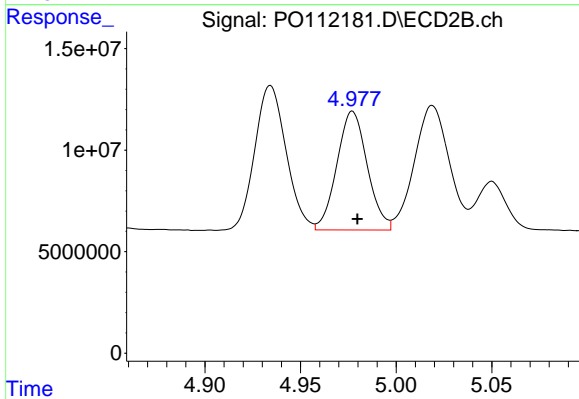
#21 AR-1248-1

R.T.: 4.741 min  
 Delta R.T.: -0.003 min  
 Response: 105775427  
 Conc: 685.22 ng/ml



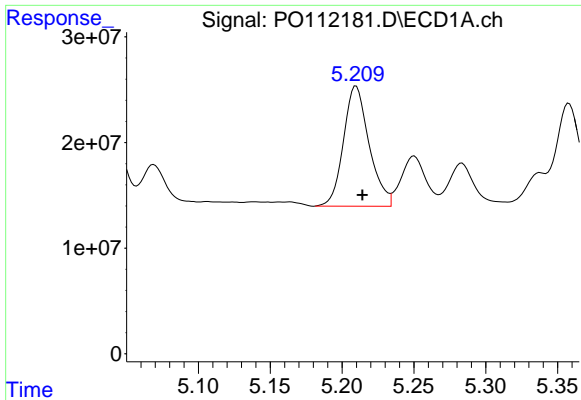
#22 AR-1248-2

R.T.: 4.996 min  
 Delta R.T.: -0.004 min  
 Response: 99805582  
 Conc: 323.70 ng/ml



#22 AR-1248-2

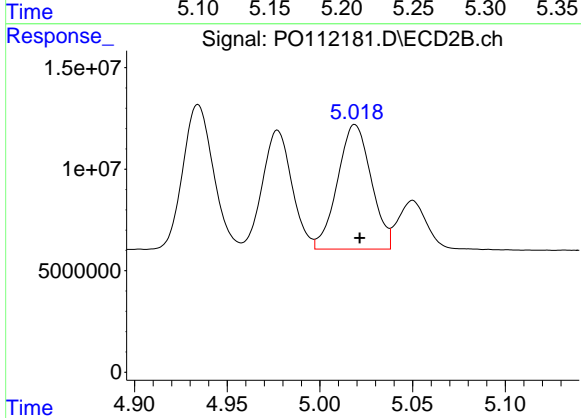
R.T.: 4.977 min  
 Delta R.T.: -0.003 min  
 Response: 64775266  
 Conc: 314.80 ng/ml



#23 AR-1248-3

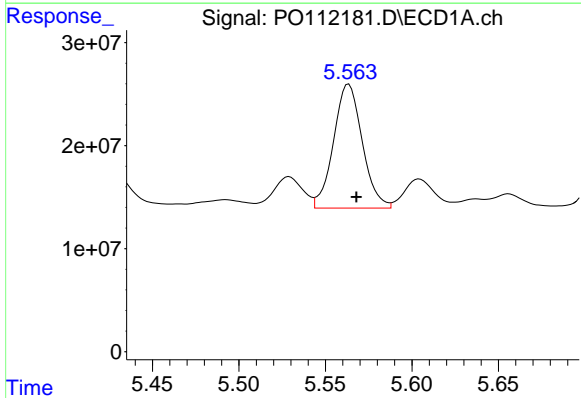
R.T.: 5.210 min  
 Delta R.T.: -0.004 min  
 Response: 141139162  
 Conc: 346.51 ng/ml

Instrument :  
 ECD\_O  
 ClientSampleId :  
 AR1660CCC500



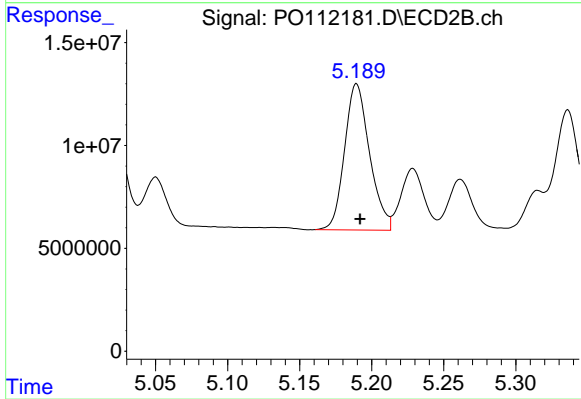
#23 AR-1248-3

R.T.: 5.019 min  
 Delta R.T.: -0.003 min  
 Response: 77647961  
 Conc: 361.49 ng/ml



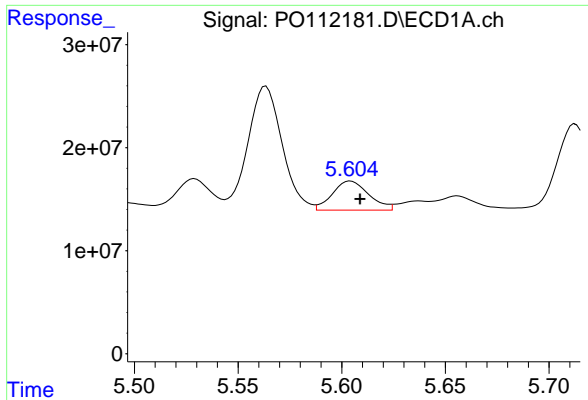
#24 AR-1248-4

R.T.: 5.563 min  
 Delta R.T.: -0.004 min  
 Response: 138497309  
 Conc: 239.97 ng/ml



#24 AR-1248-4

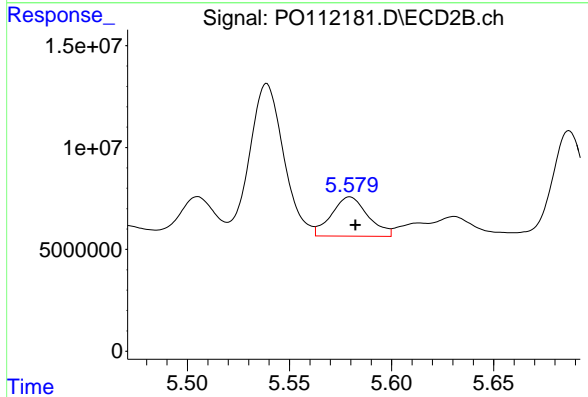
R.T.: 5.189 min  
 Delta R.T.: -0.002 min  
 Response: 85860690  
 Conc: 331.86 ng/ml



#25 AR-1248-5

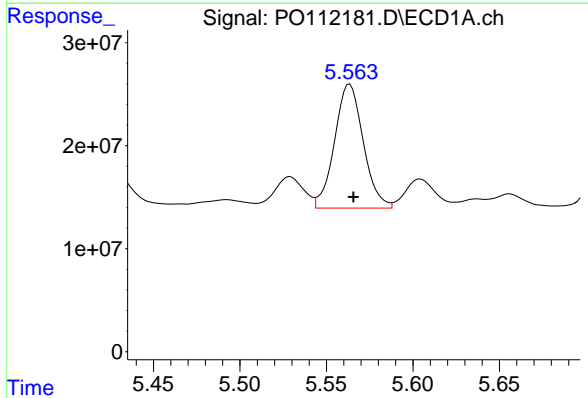
R.T.: 5.604 min  
 Delta R.T.: -0.005 min  
 Response: 34603759  
 Conc: 88.66 ng/ml

Instrument :  
 ECD\_O  
 ClientSampleId :  
 AR1660CCC500



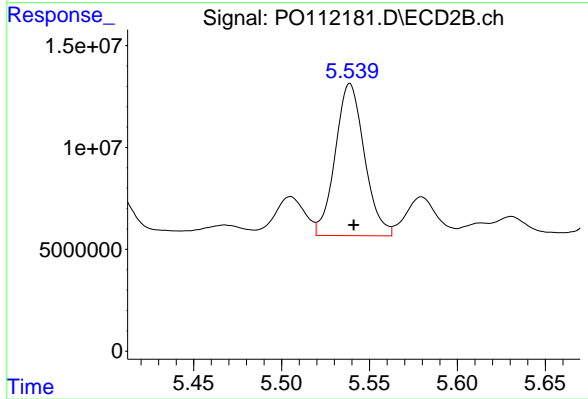
#25 AR-1248-5

R.T.: 5.580 min  
 Delta R.T.: -0.003 min  
 Response: 24013730  
 Conc: 95.84 ng/ml



#26 AR-1254-1

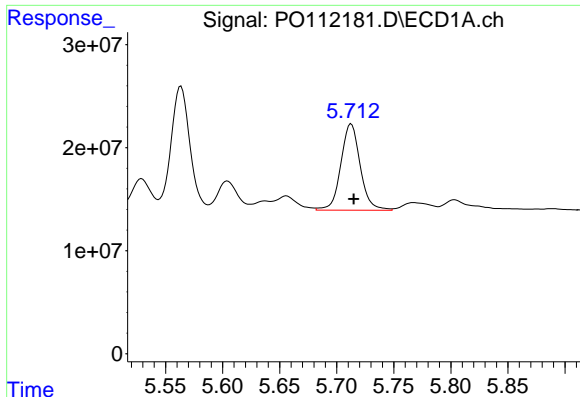
R.T.: 5.563 min  
 Delta R.T.: -0.002 min  
 Response: 138497309  
 Conc: 225.16 ng/ml



#26 AR-1254-1

R.T.: 5.539 min  
 Delta R.T.: -0.002 min  
 Response: 86265589  
 Conc: 226.32 ng/ml

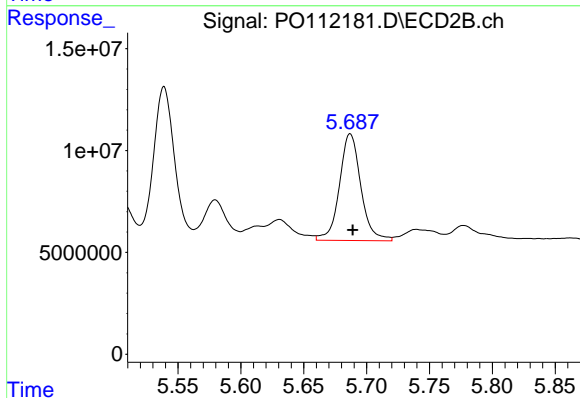




#27 AR-1254-2

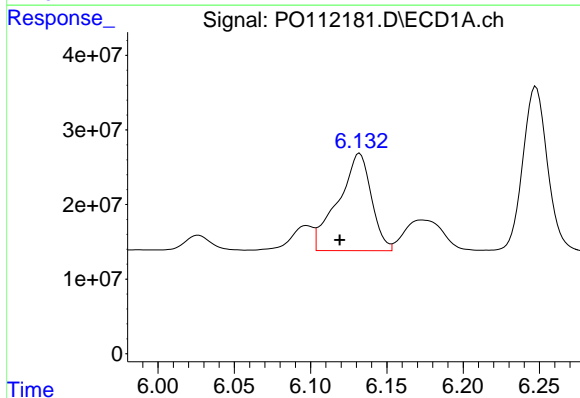
R.T.: 5.713 min  
 Delta R.T.: -0.002 min  
 Response: 99115920  
 Conc: 185.03 ng/ml

Instrument :  
 ECD\_O  
 ClientSampleId :  
 AR1660CCC500



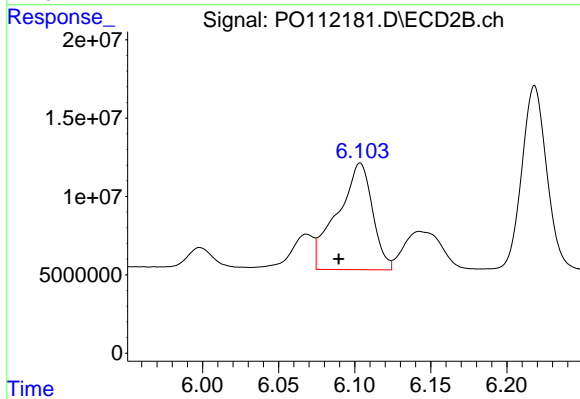
#27 AR-1254-2

R.T.: 5.687 min  
 Delta R.T.: -0.002 min  
 Response: 62163922  
 Conc: 187.35 ng/ml



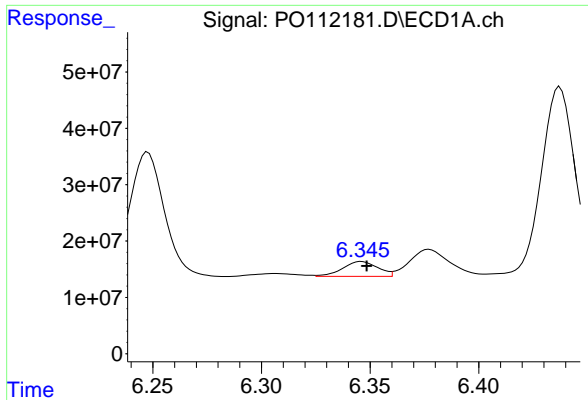
#28 AR-1254-3

R.T.: 6.132 min  
 Delta R.T.: 0.013 min  
 Response: 197338660  
 Conc: 235.05 ng/ml



#28 AR-1254-3

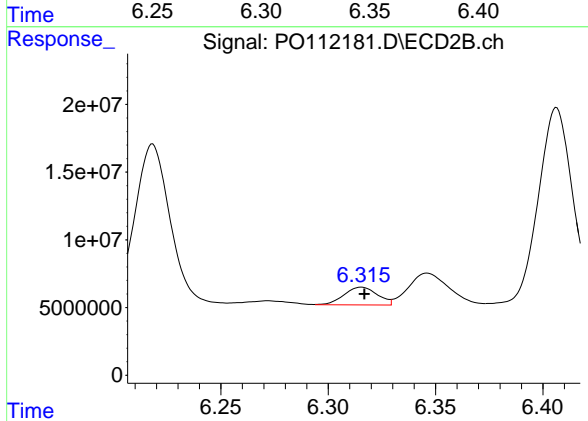
R.T.: 6.104 min  
 Delta R.T.: 0.014 min  
 Response: 109014459  
 Conc: 226.15 ng/ml



#29 AR-1254-4

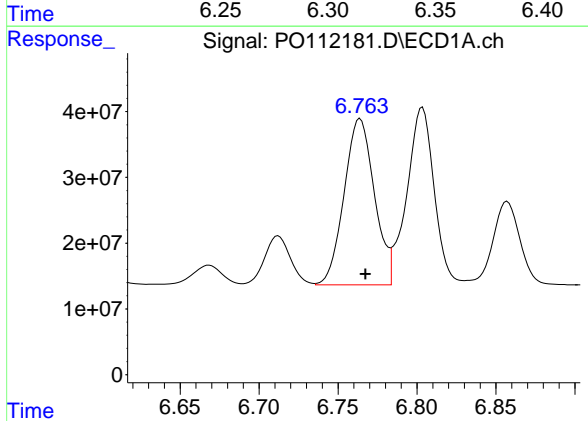
R.T.: 6.346 min  
 Delta R.T.: -0.002 min  
 Response: 29745903  
 Conc: 61.84 ng/ml

Instrument :  
 ECD\_O  
 ClientSampleId :  
 AR1660CCC500



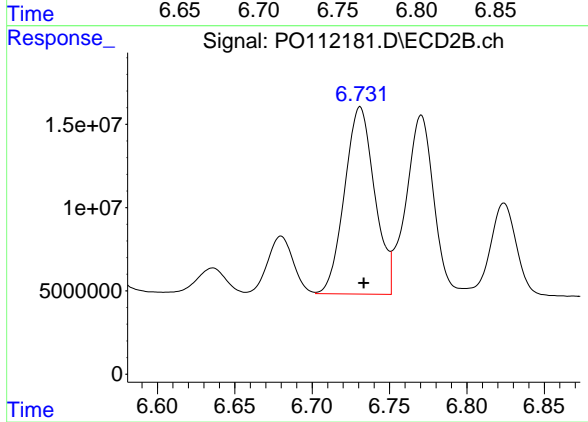
#29 AR-1254-4

R.T.: 6.316 min  
 Delta R.T.: -0.001 min  
 Response: 14174638  
 Conc: 54.37 ng/ml



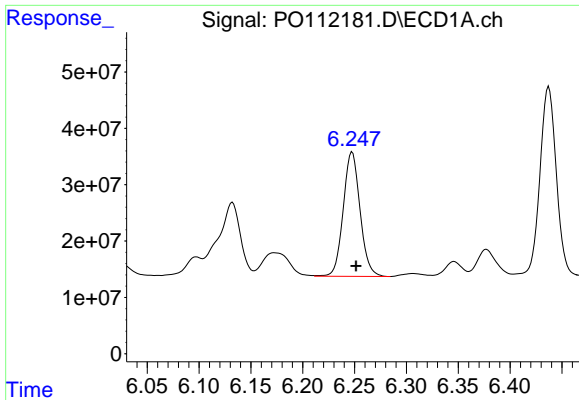
#30 AR-1254-5

R.T.: 6.764 min  
 Delta R.T.: -0.003 min  
 Response: 336945354  
 Conc: 435.36 ng/ml



#30 AR-1254-5

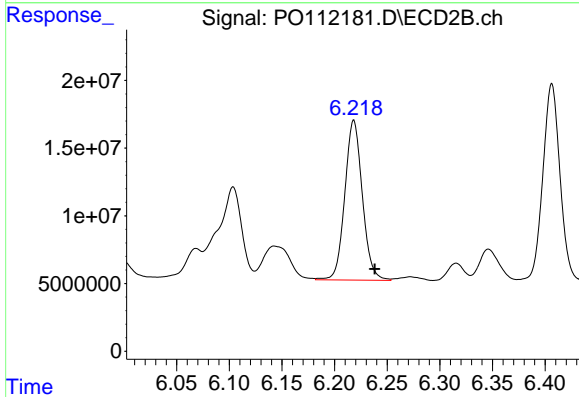
R.T.: 6.731 min  
 Delta R.T.: -0.002 min  
 Response: 152129448  
 Conc: 426.90 ng/ml



#31 AR-1260-1

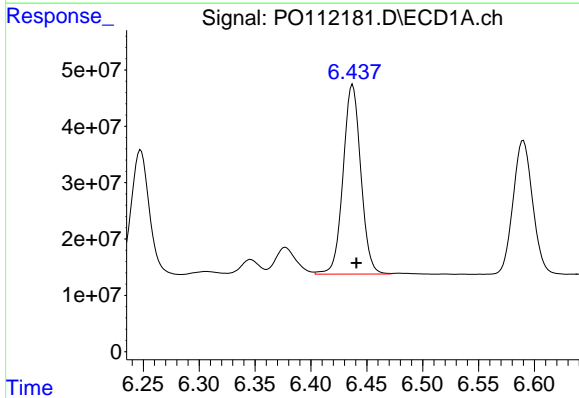
R.T.: 6.248 min  
 Delta R.T.: -0.004 min  
 Response: 249512804  
 Conc: 497.79 ng/ml

Instrument :  
 ECD\_O  
 ClientSampleId :  
 AR1660CCC500



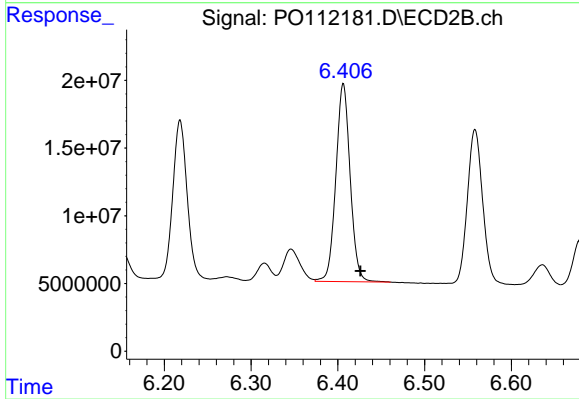
#31 AR-1260-1

R.T.: 6.218 min  
 Delta R.T.: -0.020 min  
 Response: 137286780  
 Conc: 489.33 ng/ml



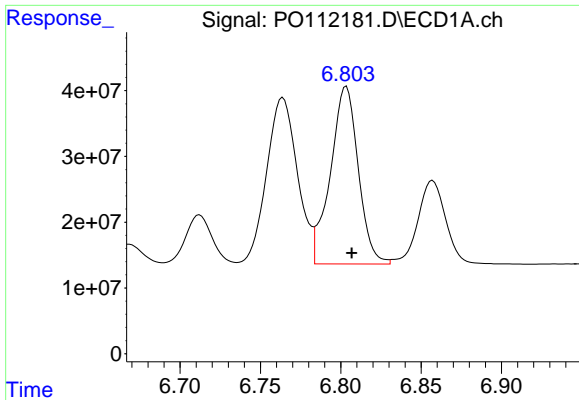
#32 AR-1260-2

R.T.: 6.437 min  
 Delta R.T.: -0.003 min  
 Response: 371903972  
 Conc: 503.84 ng/ml



#32 AR-1260-2

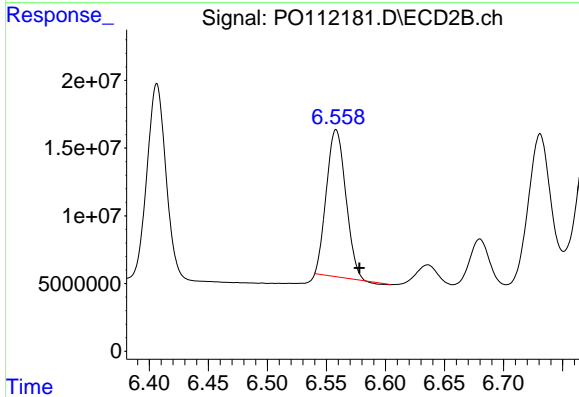
R.T.: 6.406 min  
 Delta R.T.: -0.020 min  
 Response: 167603848  
 Conc: 492.96 ng/ml



#33 AR-1260-3

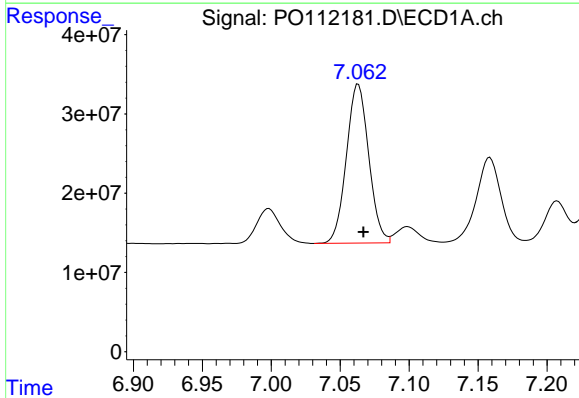
R.T.: 6.803 min  
 Delta R.T.: -0.003 min  
 Response: 326520686  
 Conc: 498.14 ng/ml

Instrument :  
 ECD\_O  
 ClientSampleId :  
 AR1660CCC500



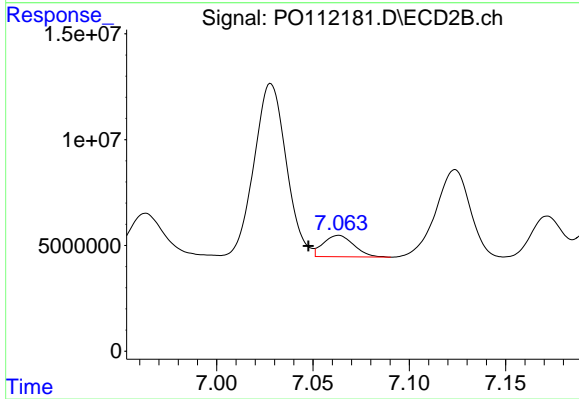
#33 AR-1260-3

R.T.: 6.558 min  
 Delta R.T.: -0.020 min  
 Response: 123803802  
 Conc: 449.24 ng/ml



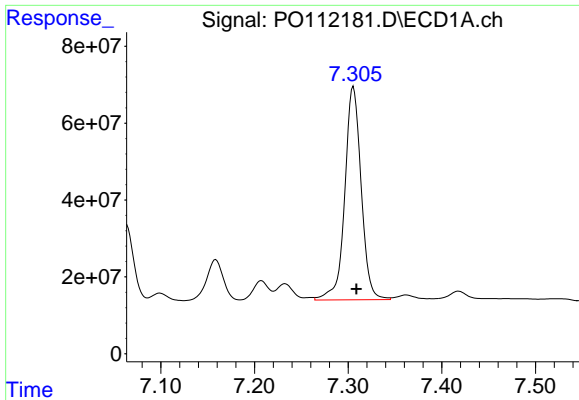
#34 AR-1260-4

R.T.: 7.063 min  
 Delta R.T.: -0.004 min  
 Response: 225943539  
 Conc: 519.11 ng/ml



#34 AR-1260-4

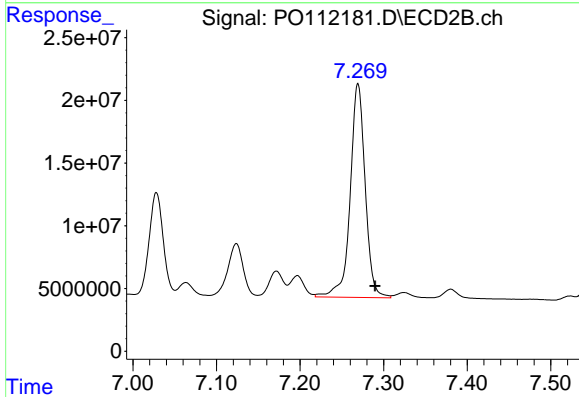
R.T.: 7.063 min  
 Delta R.T.: 0.016 min  
 Response: 11116803  
 Conc: 55.41 ng/ml



#35 AR-1260-5

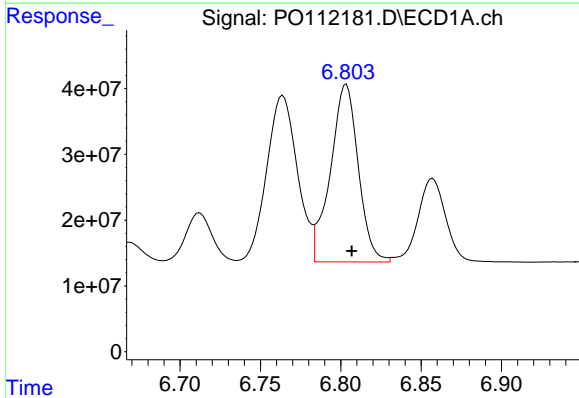
R.T.: 7.306 min  
 Delta R.T.: -0.003 min  
 Response: 675214841  
 Conc: 534.81 ng/ml

Instrument :  
 ECD\_O  
 ClientSampleId :  
 AR1660CCC500



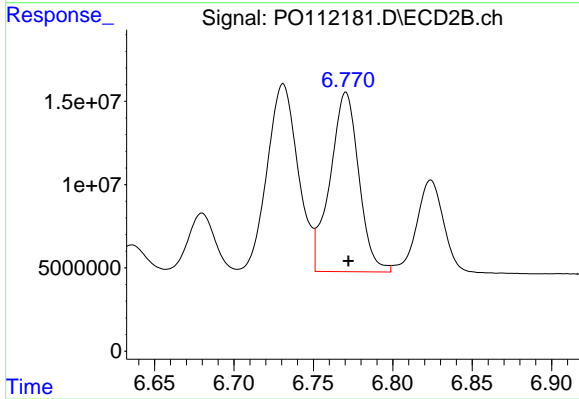
#35 AR-1260-5

R.T.: 7.269 min  
 Delta R.T.: -0.020 min  
 Response: 212586039  
 Conc: 474.81 ng/ml



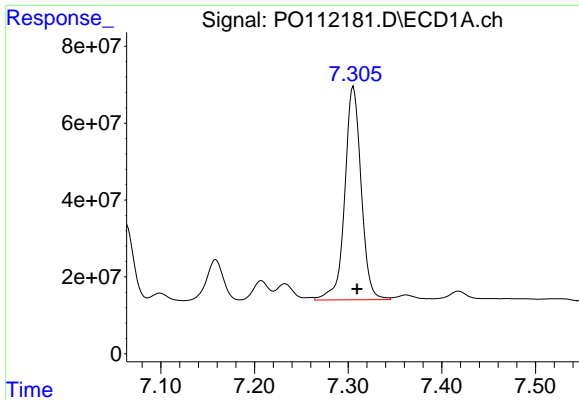
#36 AR-1262-1

R.T.: 6.803 min  
 Delta R.T.: -0.003 min  
 Response: 326520686  
 Conc: 319.59 ng/ml



#36 AR-1262-1

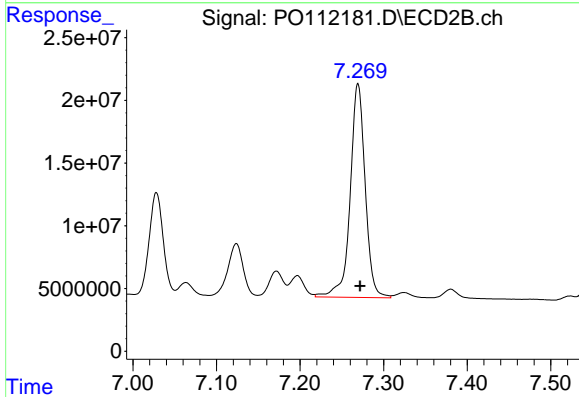
R.T.: 6.770 min  
 Delta R.T.: -0.002 min  
 Response: 135536079  
 Conc: 332.75 ng/ml



#37 AR-1262-2

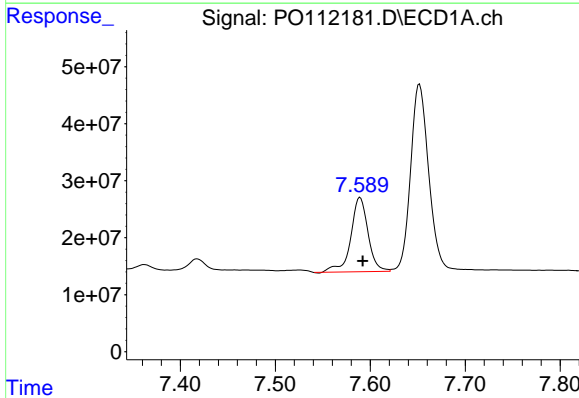
R.T.: 7.306 min  
 Delta R.T.: -0.004 min  
 Response: 675214841  
 Conc: 411.87 ng/ml

Instrument :  
 ECD\_O  
 ClientSampleId :  
 AR1660CCC500



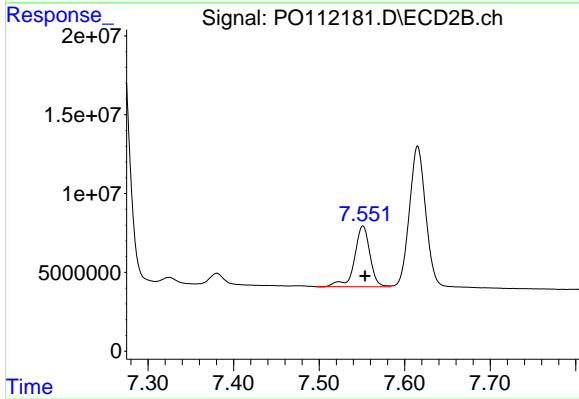
#37 AR-1262-2

R.T.: 7.269 min  
 Delta R.T.: -0.002 min  
 Response: 212586039  
 Conc: 414.76 ng/ml



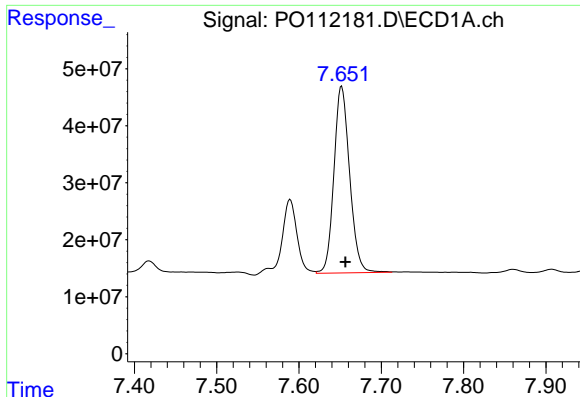
#38 AR-1262-3

R.T.: 7.589 min  
 Delta R.T.: -0.003 min  
 Response: 165048501  
 Conc: 257.09 ng/ml



#38 AR-1262-3

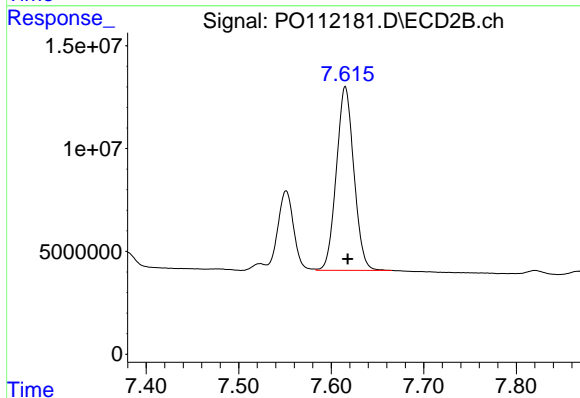
R.T.: 7.551 min  
 Delta R.T.: -0.003 min  
 Response: 48094831  
 Conc: 267.90 ng/ml



#39 AR-1262-4

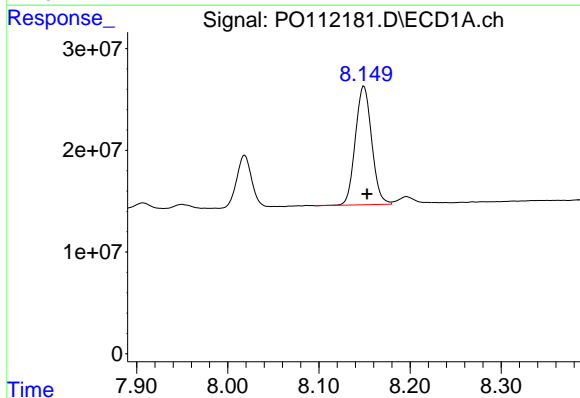
R.T.: 7.652 min  
 Delta R.T.: -0.005 min  
 Response: 434355491  
 Conc: 405.40 ng/ml

Instrument :  
 ECD\_O  
 ClientSampleId :  
 AR1660CCC500



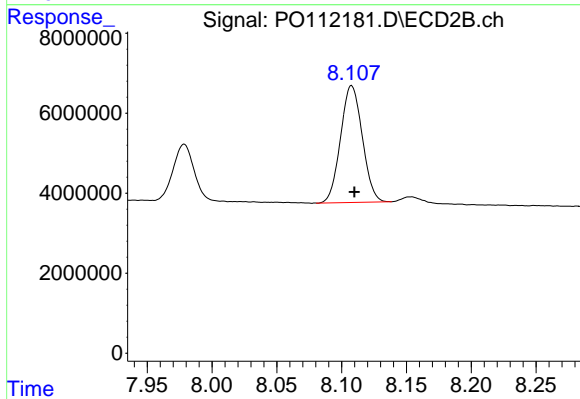
#39 AR-1262-4

R.T.: 7.615 min  
 Delta R.T.: -0.003 min  
 Response: 117572801  
 Conc: 404.14 ng/ml



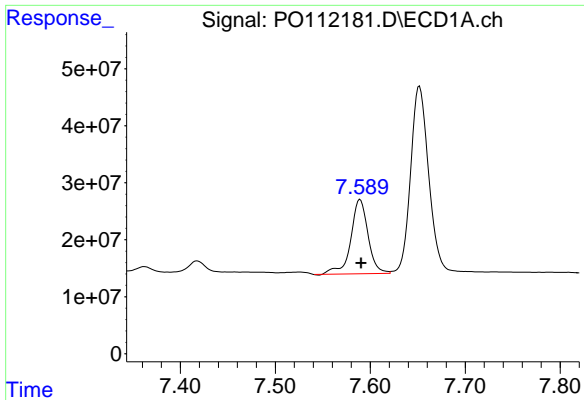
#40 AR-1262-5

R.T.: 8.149 min  
 Delta R.T.: -0.003 min  
 Response: 145721151  
 Conc: 325.17 ng/ml



#40 AR-1262-5

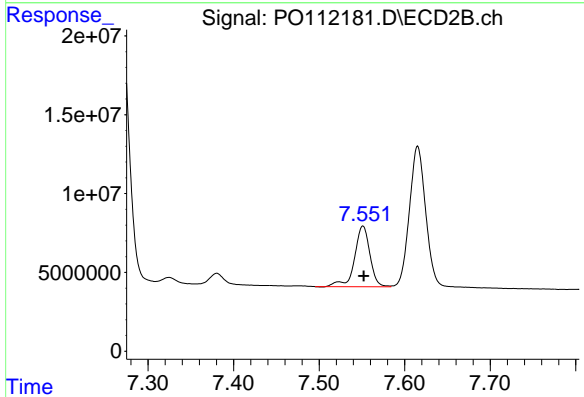
R.T.: 8.108 min  
 Delta R.T.: -0.002 min  
 Response: 34122760  
 Conc: 322.57 ng/ml



#41 AR-1268-1

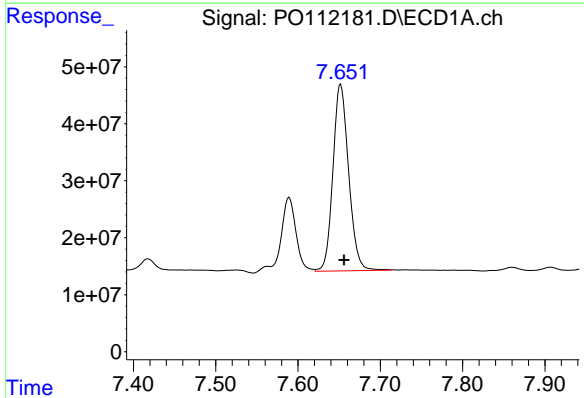
R.T.: 7.589 min  
 Delta R.T.: -0.001 min  
 Response: 165048501  
 Conc: 89.82 ng/ml

Instrument :  
 ECD\_O  
 ClientSampleId :  
 AR1660CCC500



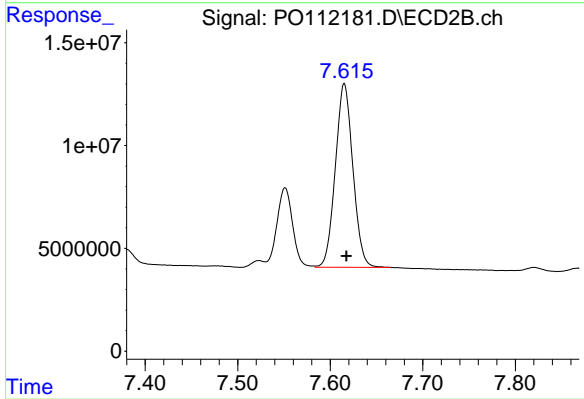
#41 AR-1268-1

R.T.: 7.551 min  
 Delta R.T.: 0.000 min  
 Response: 48094831  
 Conc: 97.86 ng/ml



#42 AR-1268-2

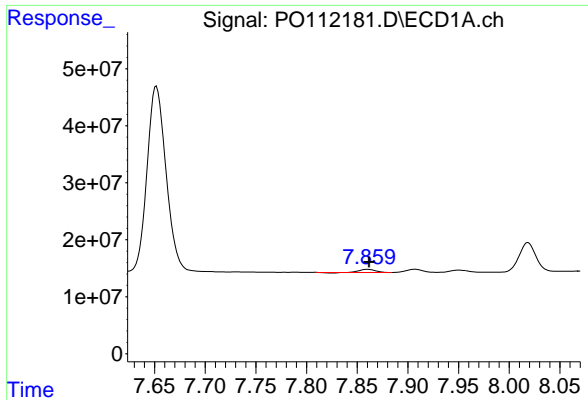
R.T.: 7.652 min  
 Delta R.T.: -0.004 min  
 Response: 434355491  
 Conc: 278.86 ng/ml



#42 AR-1268-2

R.T.: 7.615 min  
 Delta R.T.: -0.002 min  
 Response: 117572801  
 Conc: 281.82 ng/ml

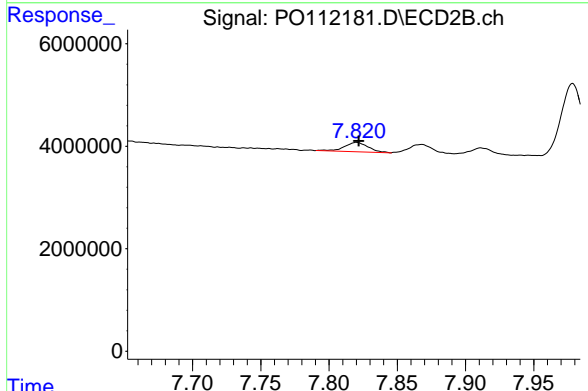




#43 AR-1268-3

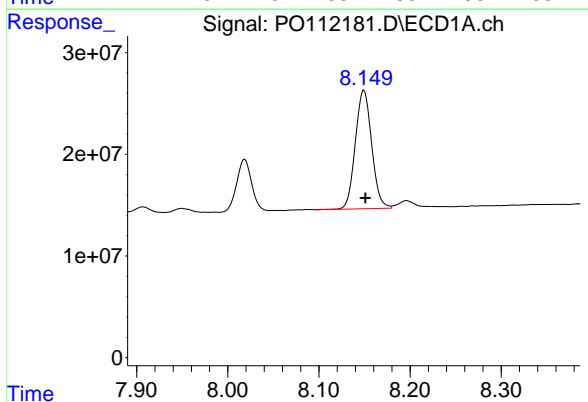
R.T.: 7.860 min  
 Delta R.T.: -0.001 min  
 Response: 5577115  
 Conc: 4.29 ng/ml

Instrument : ECD\_O  
 ClientSampleId : AR1660CCC500



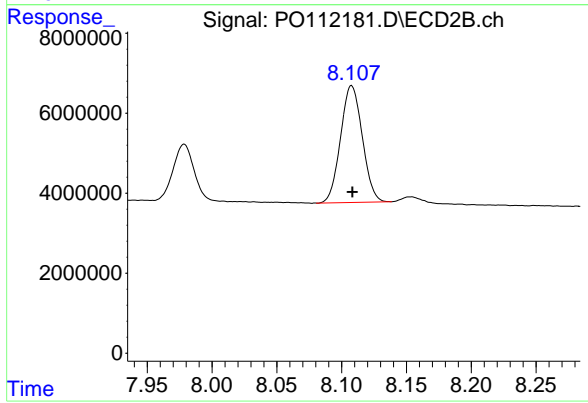
#43 AR-1268-3

R.T.: 7.820 min  
 Delta R.T.: -0.002 min  
 Response: 2217964  
 Conc: 7.01 ng/ml



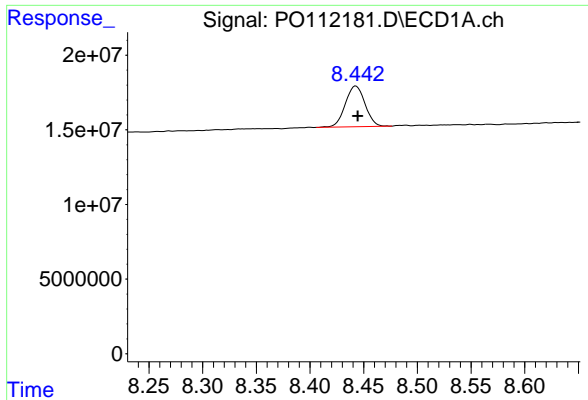
#44 AR-1268-4

R.T.: 8.149 min  
 Delta R.T.: -0.002 min  
 Response: 145721151  
 Conc: 303.33 ng/ml



#44 AR-1268-4

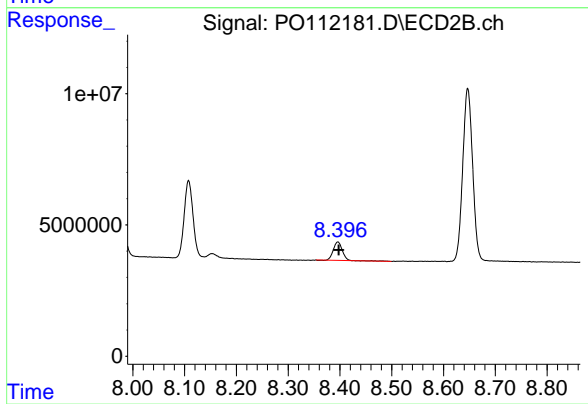
R.T.: 8.108 min  
 Delta R.T.: 0.000 min  
 Response: 34122760  
 Conc: 306.00 ng/ml



#45 AR-1268-5

R.T.: 8.443 min  
Delta R.T.: -0.002 min  
Response: 34954784  
Conc: 10.71 ng/ml

Instrument :  
ECD\_O  
ClientSampleId :  
AR1660CCC500



#45 AR-1268-5

R.T.: 8.396 min  
Delta R.T.: -0.002 min  
Response: 8457568  
Conc: 11.64 ng/ml