

Data Path : Z:\pestpcbsrv\HPCHEM1\ECD_0\Data\P0071025\
 Data File : PO112182.D
 Signal(s) : Signal #1: ECD1A.ch Signal #2: ECD2B.ch
 Acq On : 10 Jul 2025 10:13
 Operator : YP/AJ
 Sample : AR1242CCC500
 Misc :
 ALS Vial : 4 Sample Multiplier: 1

Instrument :
 ECD_0
 ClientSampleId :
 AR1242CCC500

Integration File signal 1: autoint1.e
 Integration File signal 2: autoint2.e
 Quant Time: Jul 10 11:17:59 2025
 Quant Method : Z:\pestpcbsrv\HPCHEM1\ECD_0\methods\P0070825.M
 Quant Title : GC EXTRACTABLES
 QLast Update : Wed Jul 09 10:50:50 2025
 Response via : Initial Calibration
 Integrator: ChemStation

Volume Inj. : 2 µl
 Signal #1 Phase : ZB-MR1 Signal #2 Phase: ZB-MR2
 Signal #1 Info : 30Mx0.32mmx 0.50µ Signal #2 Info : 30M x 0.32mm x 0.25µm

Compound	RT#1	RT#2	Resp#1	Resp#2	ng/ml	ng/ml
System Monitoring Compounds						
1) SA Tetrachlo...	3.672	3.665	511.6E6	309.5E6	51.704	48.572
2) SA Decachlor...	8.701	8.648	365.6E6	87144144	53.471	50.563
Target Compounds						
3) L1 AR-1016-1	4.759	4.759	143.6E6	132.5E6	422.176	594.442 #
4) L1 AR-1016-2	4.778	4.791	217.0E6	9635577	436.344	29.279 #
5) L1 AR-1016-3	4.835	4.934	136.3E6	68811848	421.072	405.093
6) L1 AR-1016-4	4.955	4.977	110.4E6	52172336	429.764	380.189
7) L1 AR-1016-5	5.212	5.190	117.1E6	73193994	427.754	424.435
8) L2 AR-1221-1	3.883	3.873	13496818	9529009	115.739	115.791
9) L2 AR-1221-2	3.971	3.960	19555821	13963797	248.043	235.265
10) L2 AR-1221-3	4.046	4.034	75495264	50895339	280.046	269.606
11) L3 AR-1232-1	4.046	4.034	75495264	50895339	351.684	339.078
12) L3 AR-1232-2	4.538	4.759	108.6E6	132.5E6	955.402	865.280
13) L3 AR-1232-3	4.778	4.934	217.0E6	68811848	947.519	911.342
14) L3 AR-1232-4	4.955	5.019	110.4E6	66658098	965.585	1010.152
15) L3 AR-1232-5	4.998	5.190	79580572	73193994	1084.200	985.646
16) L4 AR-1242-1	4.759	4.741	143.6E6	89466228	495.764	461.503
17) L4 AR-1242-2	4.778	4.759	217.0E6	132.5E6	509.463	467.482
18) L4 AR-1242-3	4.835	4.934	136.3E6	68811848	498.042	472.358
19) L4 AR-1242-4	4.955	5.019	110.4E6	66658098	489.811	469.950
20) L4 AR-1242-5	5.606	5.539	115.1E6	87882526	543.812	483.577
21) L5 AR-1248-1	4.759	4.741	143.6E6	89466228	632.841	579.564
22) L5 AR-1248-2	4.998	4.977	79580572	52172336	258.106	253.550
23) L5 AR-1248-3	5.212	5.019	117.1E6	66658098	287.391	310.329
24) L5 AR-1248-4	5.565	5.190	143.4E6	73193994	248.429	282.901
25) L5 AR-1248-5	5.606	5.580	115.1E6	74285884	294.922	296.492
26) L6 AR-1254-1	5.565	5.539	143.4E6	87882526	233.096	230.561
27) L6 AR-1254-2	5.715	5.687	34886941	26923503	65.126	81.141
28) L6 AR-1254-3	6.118	6.088	41111426	29288391	48.967	60.759
29) L6 AR-1254-4	6.348	6.316	39245914	20105313	81.589	77.122
30) L6 AR-1254-5	6.767	6.732	18162108	5764442	23.467	16.176 #
31) L7 AR-1260-1	6.263	6.231	16196908	9789946	32.314	34.894
32) L7 AR-1260-2	6.437	6.405	8087038	2631488	10.956	7.740 #
33) L7 AR-1260-3	6.841	6.556	2114759	2224980	3.226	8.074 #
34) L7 AR-1260-4	7.066	7.063	1897915	2247528	4.361	11.202 #
35) L7 AR-1260-5	7.303	7.246f	1712942	3505588	1.357	7.830 #
36) L8 AR-1262-1	6.841	6.798	2114759	1449435	2.070	3.558 #
37) L8 AR-1262-2	7.303	7.246	1712942	3505588	1.045	6.840 #
38) L8 AR-1262-3	7.594	7.554	3925914	786700	6.115	4.382 #
39) L8 AR-1262-4	7.649	7.605	3648214	636209	3.405	2.187 #
40) L8 AR-1262-5	8.157	0.000	940293	0	2.098	N.D. #
41) L9 AR-1268-1	7.594	7.554	3925914	786700	2.137	1.601 #

Data Path : Z:\pestpcbsrv\HPCHEM1\ECD_0\Data\P0071025\
 Data File : P0112182.D
 Signal(s) : Signal #1: ECD1A.ch Signal #2: ECD2B.ch
 Acq On : 10 Jul 2025 10:13
 Operator : YP/AJ
 Sample : AR1242CCC500
 Misc :
 ALS Vial : 4 Sample Multiplier: 1

Instrument :
 ECD_0
ClientSampleId :
 AR1242CCC500

Integration File signal 1: autoint1.e
 Integration File signal 2: autoint2.e
 Quant Time: Jul 10 11:17:59 2025
 Quant Method : Z:\pestpcbsrv\HPCHEM1\ECD_0\methods\P0070825.M
 Quant Title : GC EXTRACTABLES
 QLast Update : Wed Jul 09 10:50:50 2025
 Response via : Initial Calibration
 Integrator: ChemStation

Volume Inj. : 2 µl
 Signal #1 Phase : ZB-MR1 Signal #2 Phase: ZB-MR2
 Signal #1 Info : 30Mx0.32mmx 0.50µ Signal #2 Info : 30M x 0.32mm x 0.25µm

	Compound	RT#1	RT#2	Resp#1	Resp#2	ng/ml	ng/ml
42)	L9 AR-1268-2	7.649	7.605	3648214	636209	2.342	1.525 #
43)	L9 AR-1268-3	7.857	7.820	-394854	520541	N.D.	1.645 #
44)	L9 AR-1268-4	8.157	0.000	940293	0	1.957	N.D. #
45)	L9 AR-1268-5	8.445	8.398	4161873	621937	1.275	0.856 #

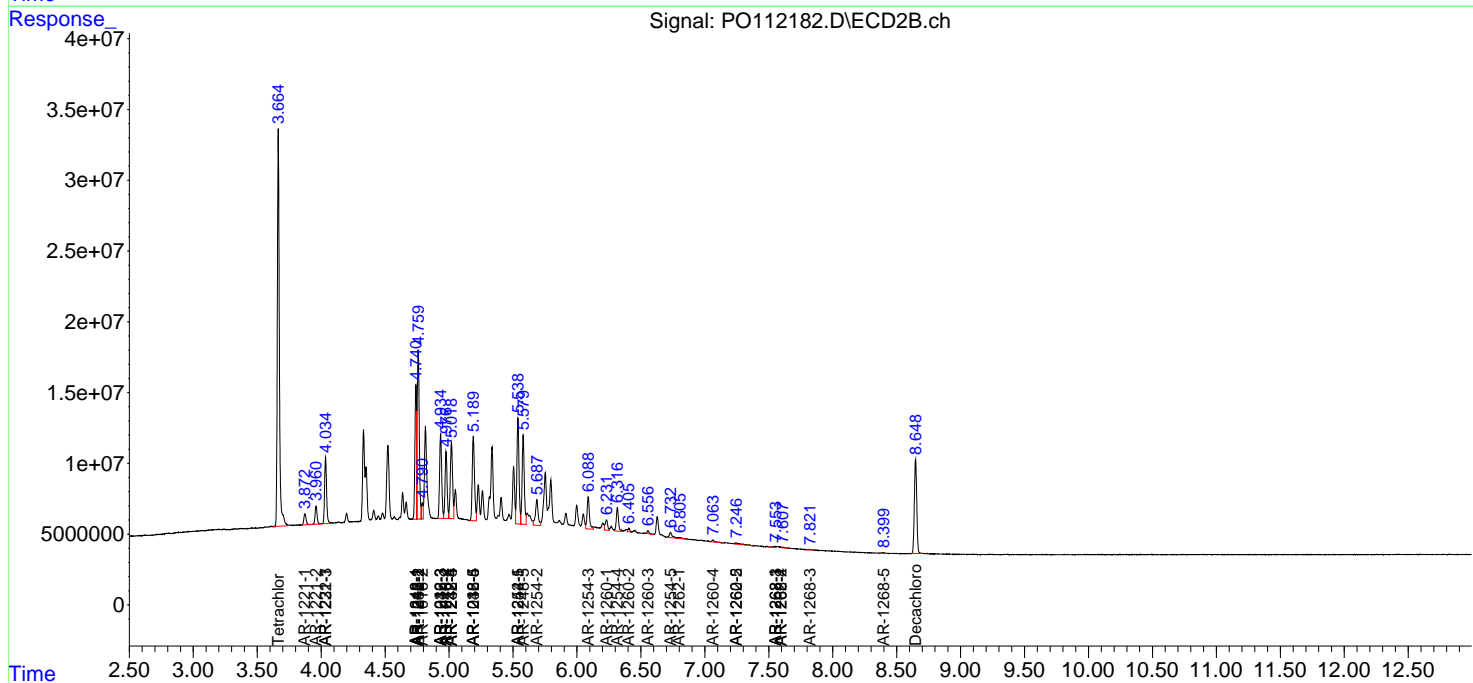
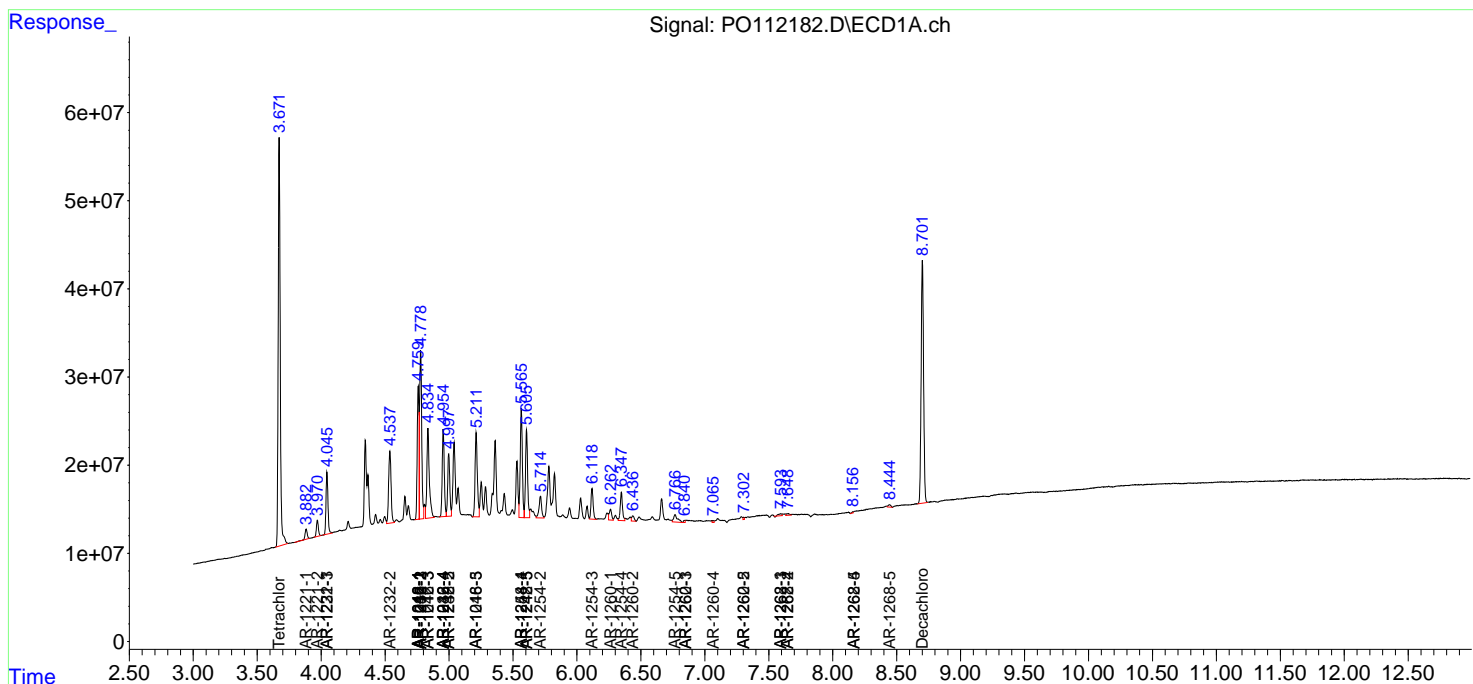
(f)=RT Delta > 1/2 Window (#)=Amounts differ by > 25% (m)=manual int.

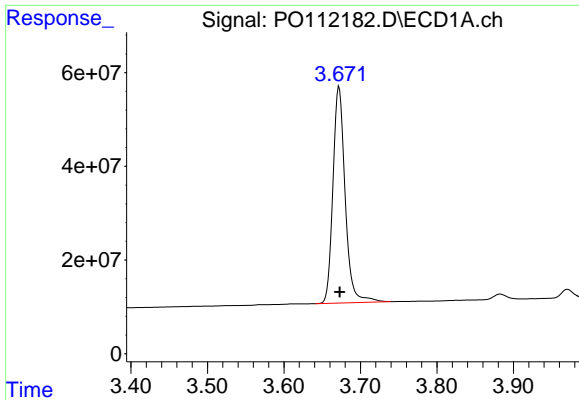
Data Path : Z:\pestpcbsrv\HPCHEM1\ECD_O\Data\PO071025\
 Data File : PO112182.D
 Signal(s) : Signal #1: ECD1A.ch Signal #2: ECD2B.ch
 Acq On : 10 Jul 2025 10:13
 Operator : YP/AJ
 Sample : AR1242CCC500
 Misc :
 ALS Vial : 4 Sample Multiplier: 1

Instrument :
 ECD_O
 ClientSampleId :
 AR1242CCC500

Integration File signal 1: autoint1.e
 Integration File signal 2: autoint2.e
 Quant Time: Jul 10 11:17:59 2025
 Quant Method : Z:\pestpcbsrv\HPCHEM1\ECD_O\methods\PO070825.M
 Quant Title : GC EXTRACTABLES
 QLast Update : Wed Jul 09 10:50:50 2025
 Response via : Initial Calibration
 Integrator: ChemStation

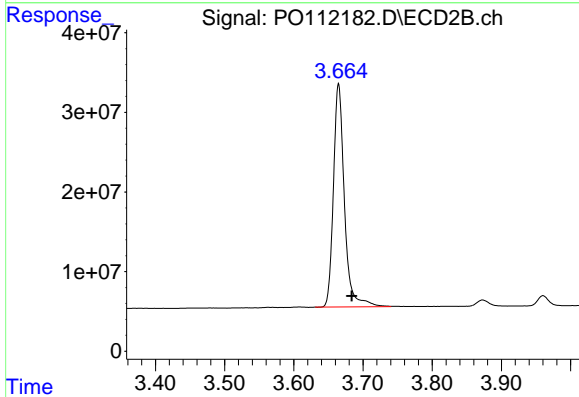
Volume Inj. : 2 µl
 Signal #1 Phase : ZB-MR1 Signal #2 Phase: ZB-MR2
 Signal #1 Info : 30Mx0.32mmx 0.50µ Signal #2 Info : 30M x 0.32mm x 0.25µm



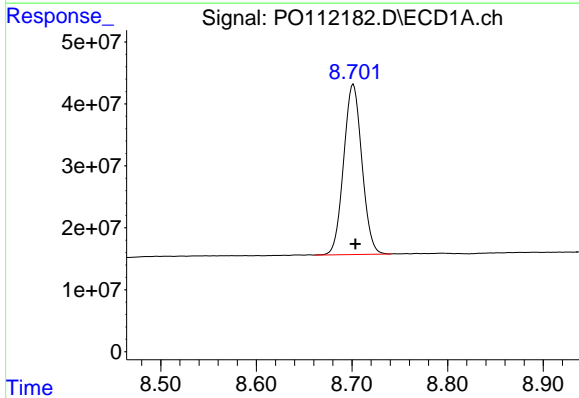


#1 Tetrachloro-m-xylene
 R.T.: 3.672 min
 Delta R.T.: 0.000 min
 Response: 511593344
 Conc: 51.70 ng/ml

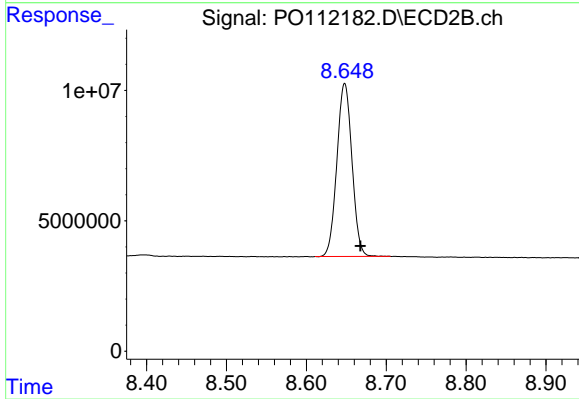
Instrument :
 ECD_O
 ClientSampleId :
 AR1242CCC500



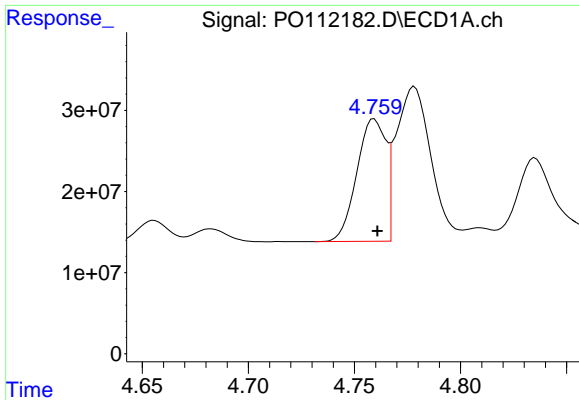
#1 Tetrachloro-m-xylene
 R.T.: 3.665 min
 Delta R.T.: -0.019 min
 Response: 309455631
 Conc: 48.57 ng/ml



#2 Decachlorobiphenyl
 R.T.: 8.701 min
 Delta R.T.: -0.002 min
 Response: 365580486
 Conc: 53.47 ng/ml



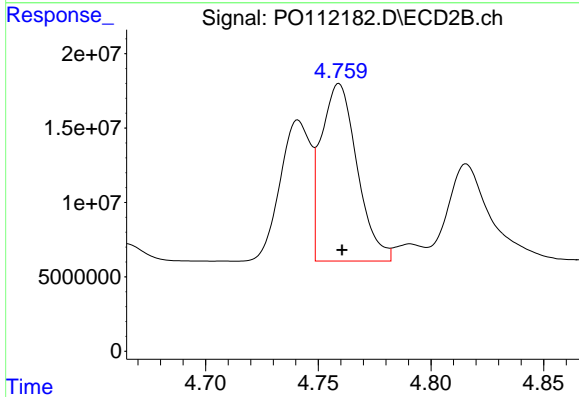
#2 Decachlorobiphenyl
 R.T.: 8.648 min
 Delta R.T.: -0.020 min
 Response: 87144144
 Conc: 50.56 ng/ml



#3 AR-1016-1

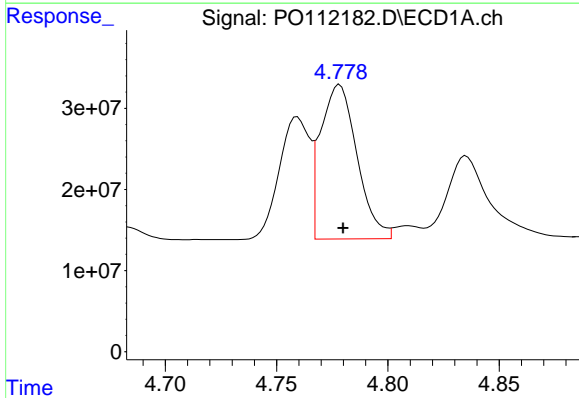
R.T.: 4.759 min
 Delta R.T.: -0.001 min
 Response: 143591501
 Conc: 422.18 ng/ml

Instrument :
 ECD_O
 ClientSampleId :
 AR1242CCC500



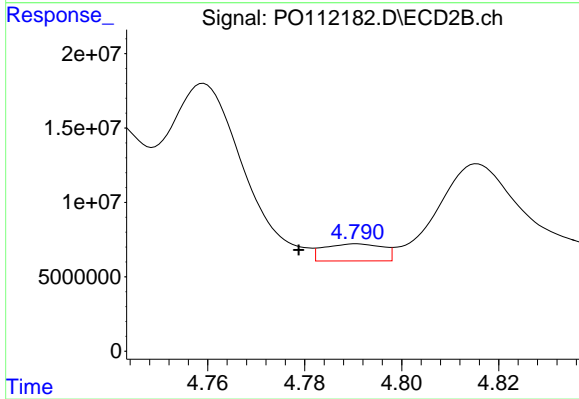
#3 AR-1016-1

R.T.: 4.759 min
 Delta R.T.: -0.001 min
 Response: 132462047
 Conc: 594.44 ng/ml



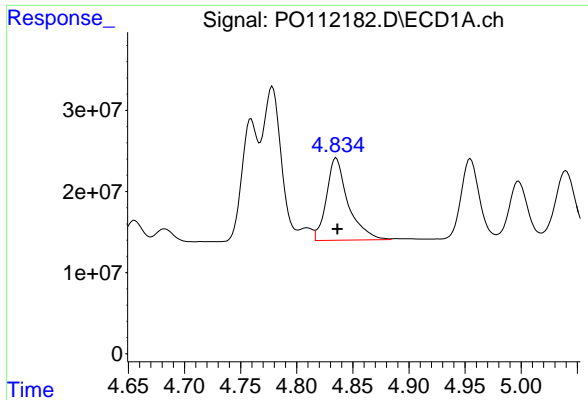
#4 AR-1016-2

R.T.: 4.778 min
 Delta R.T.: -0.002 min
 Response: 216990136
 Conc: 436.34 ng/ml



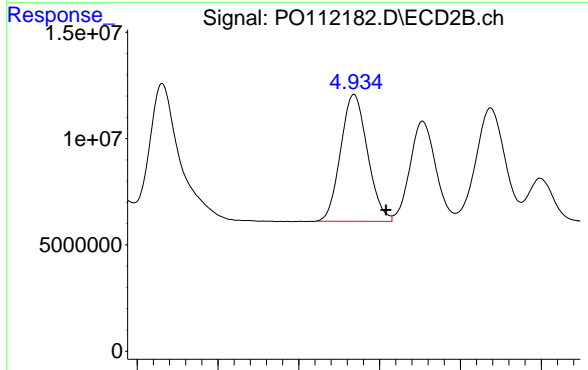
#4 AR-1016-2

R.T.: 4.791 min
 Delta R.T.: 0.012 min
 Response: 9635577
 Conc: 29.28 ng/ml

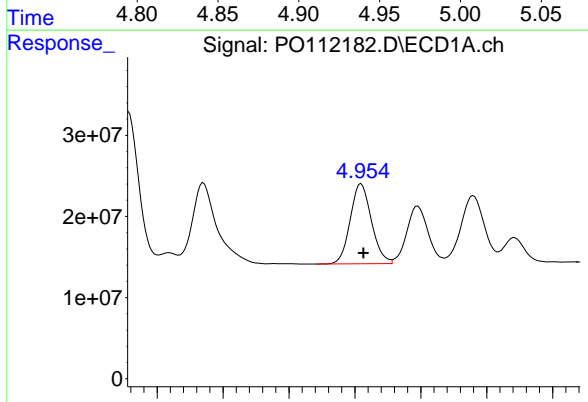


#5 AR-1016-3
 R.T.: 4.835 min
 Delta R.T.: -0.001 min
 Response: 136306923
 Conc: 421.07 ng/ml

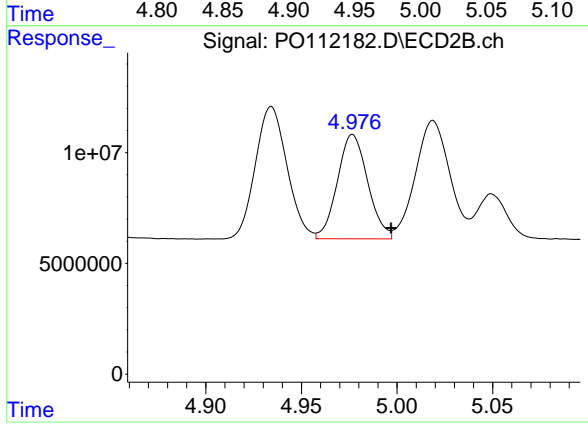
Instrument :
 ECD_O
 ClientSampleId :
 AR1242CCC500



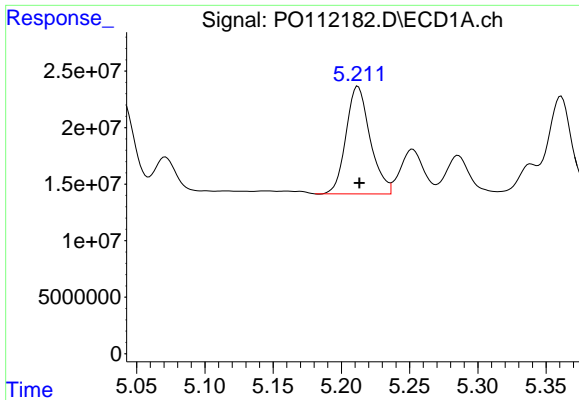
#5 AR-1016-3
 R.T.: 4.934 min
 Delta R.T.: -0.020 min
 Response: 68811848
 Conc: 405.09 ng/ml



#6 AR-1016-4
 R.T.: 4.955 min
 Delta R.T.: -0.002 min
 Response: 110363217
 Conc: 429.76 ng/ml



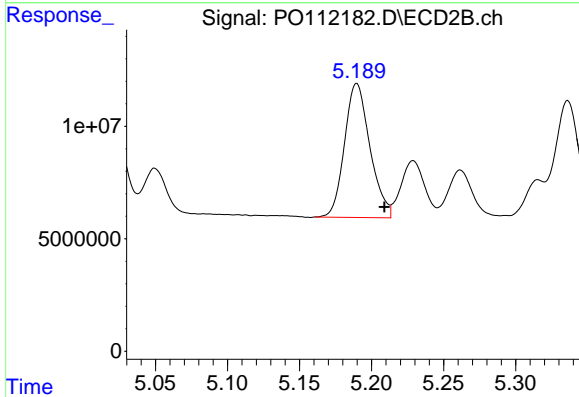
#6 AR-1016-4
 R.T.: 4.977 min
 Delta R.T.: -0.020 min
 Response: 52172336
 Conc: 380.19 ng/ml



#7 AR-1016-5

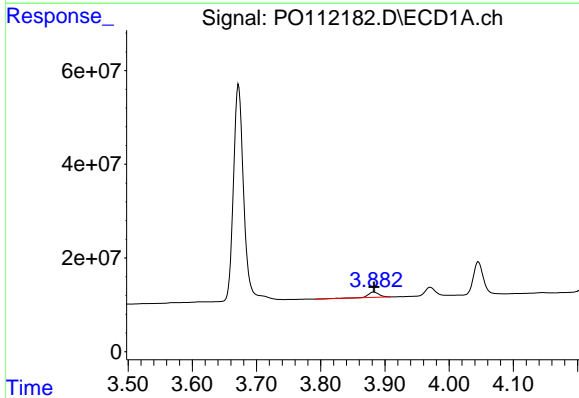
R.T.: 5.212 min
 Delta R.T.: -0.001 min
 Response: 117059941
 Conc: 427.75 ng/ml

Instrument :
 ECD_O
 ClientSampleId :
 AR1242CCC500



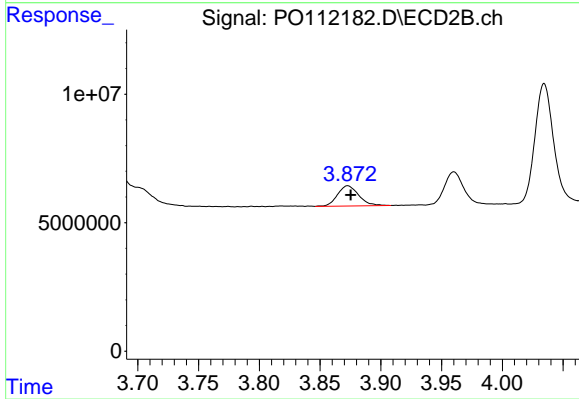
#7 AR-1016-5

R.T.: 5.190 min
 Delta R.T.: -0.019 min
 Response: 73193994
 Conc: 424.44 ng/ml



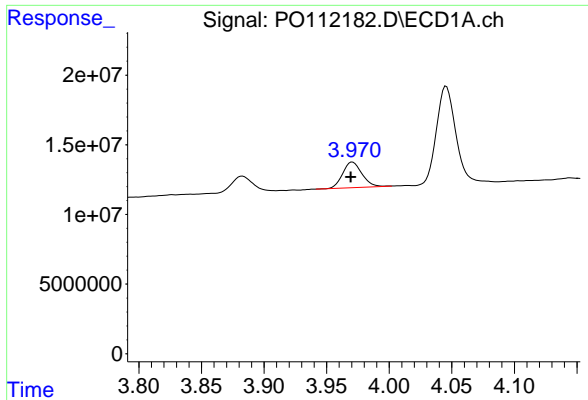
#8 AR-1221-1

R.T.: 3.883 min
 Delta R.T.: 0.000 min
 Response: 13496818
 Conc: 115.74 ng/ml



#8 AR-1221-1

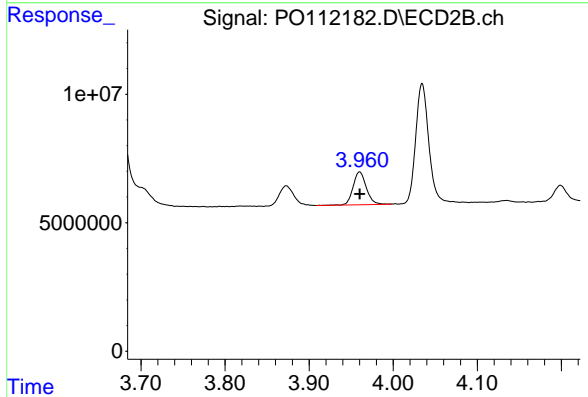
R.T.: 3.873 min
 Delta R.T.: -0.002 min
 Response: 9529009
 Conc: 115.79 ng/ml



#9 AR-1221-2

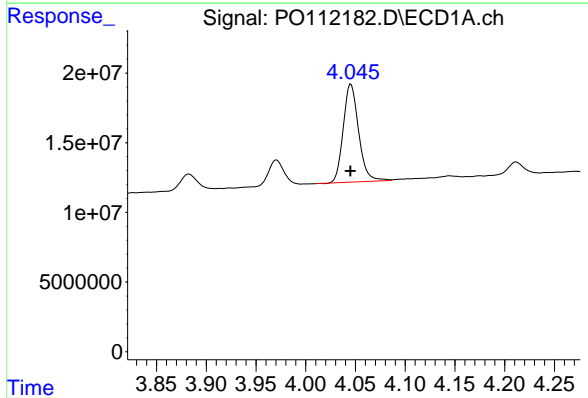
R.T.: 3.971 min
 Delta R.T.: 0.001 min
 Response: 19555821
 Conc: 248.04 ng/ml

Instrument :
 ECD_O
 ClientSampleId :
 AR1242CCC500



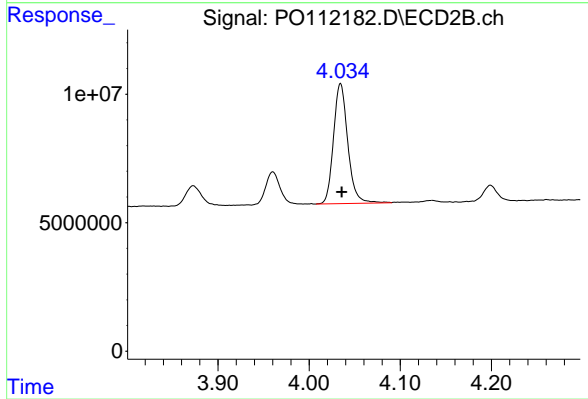
#9 AR-1221-2

R.T.: 3.960 min
 Delta R.T.: 0.000 min
 Response: 13963797
 Conc: 235.26 ng/ml



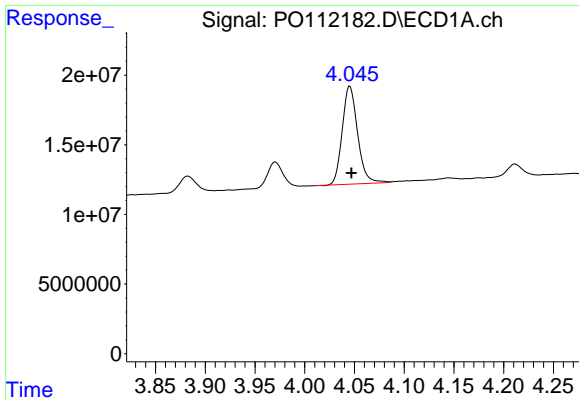
#10 AR-1221-3

R.T.: 4.046 min
 Delta R.T.: 0.000 min
 Response: 75495264
 Conc: 280.05 ng/ml



#10 AR-1221-3

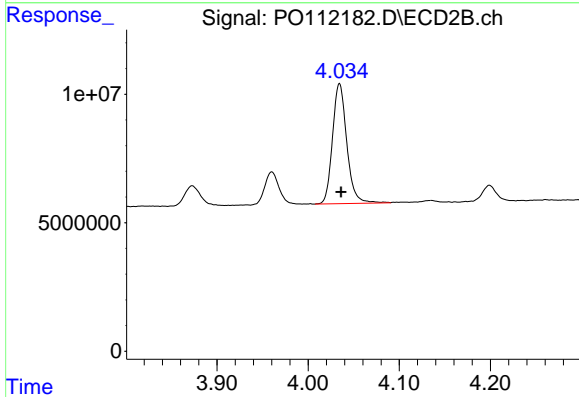
R.T.: 4.034 min
 Delta R.T.: -0.001 min
 Response: 50895339
 Conc: 269.61 ng/ml



#11 AR-1232-1

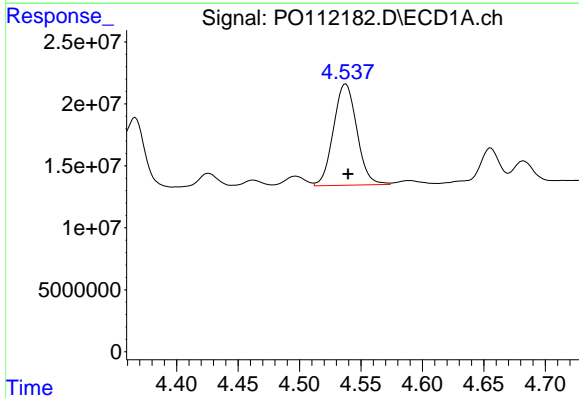
R.T.: 4.046 min
 Delta R.T.: -0.001 min
 Response: 75495264
 Conc: 351.68 ng/ml

Instrument :
 ECD_O
 ClientSampleId :
 AR1242CCC500



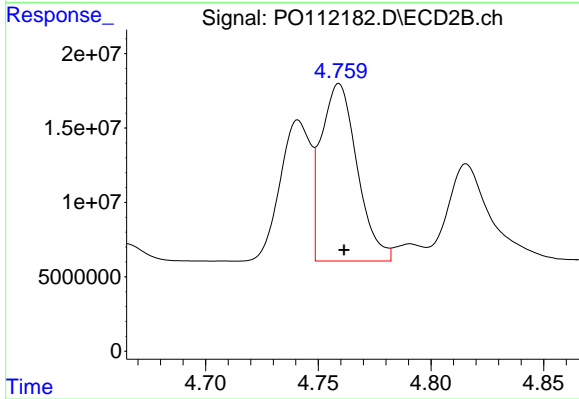
#11 AR-1232-1

R.T.: 4.034 min
 Delta R.T.: -0.002 min
 Response: 50895339
 Conc: 339.08 ng/ml



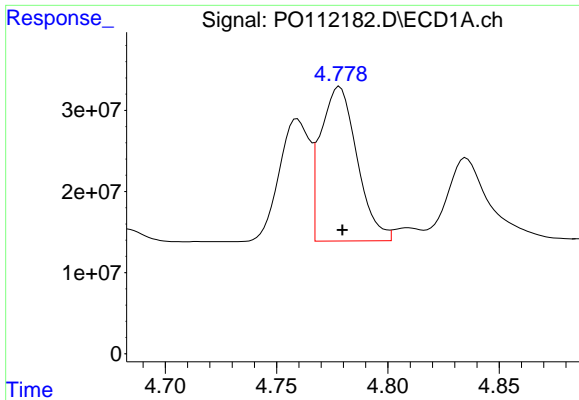
#12 AR-1232-2

R.T.: 4.538 min
 Delta R.T.: -0.002 min
 Response: 108569029
 Conc: 955.40 ng/ml



#12 AR-1232-2

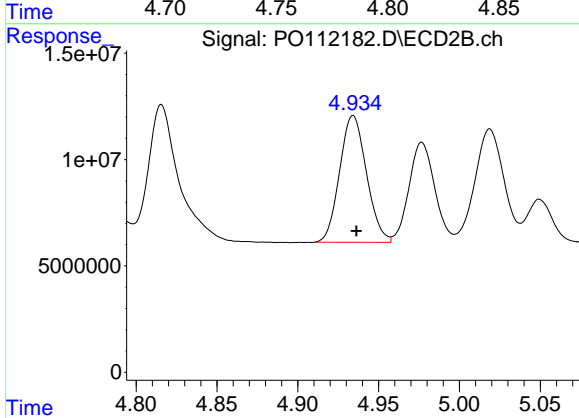
R.T.: 4.759 min
 Delta R.T.: -0.002 min
 Response: 132462047
 Conc: 865.28 ng/ml



#13 AR-1232-3

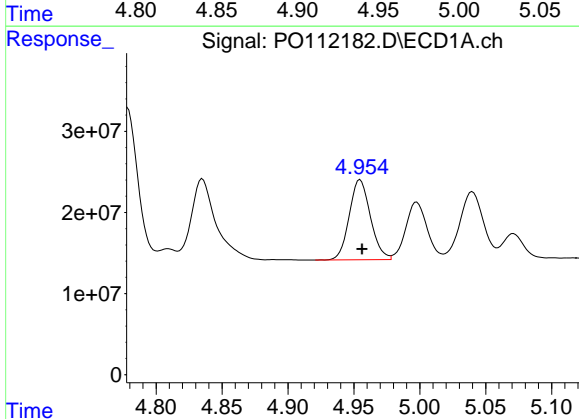
R.T.: 4.778 min
 Delta R.T.: -0.001 min
 Response: 216990136
 Conc: 947.52 ng/ml

Instrument :
 ECD_O
 ClientSampleId :
 AR1242CCC500



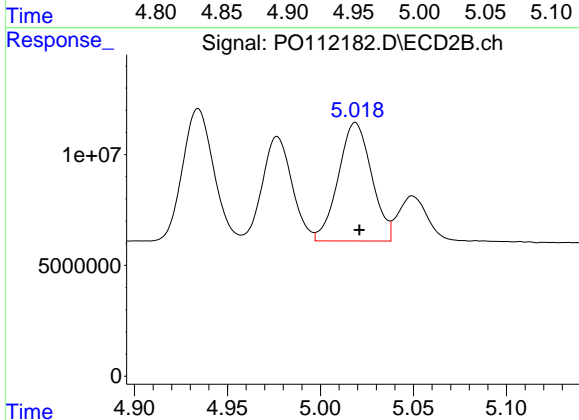
#13 AR-1232-3

R.T.: 4.934 min
 Delta R.T.: -0.002 min
 Response: 68811848
 Conc: 911.34 ng/ml



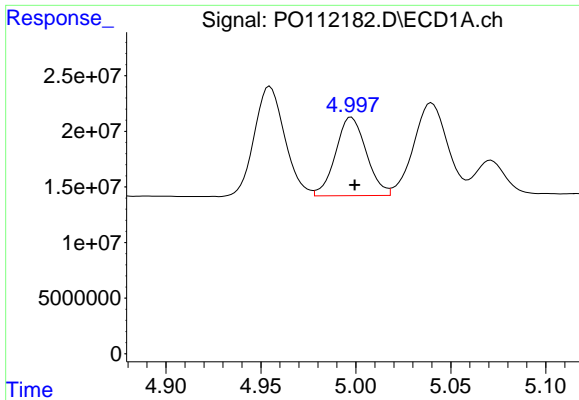
#14 AR-1232-4

R.T.: 4.955 min
 Delta R.T.: -0.001 min
 Response: 110363217
 Conc: 965.59 ng/ml



#14 AR-1232-4

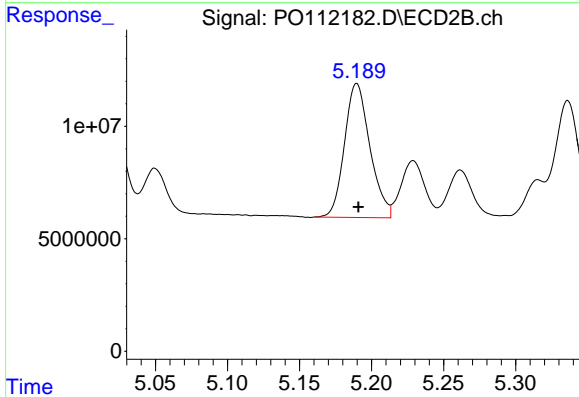
R.T.: 5.019 min
 Delta R.T.: -0.002 min
 Response: 66658098
 Conc: 1010.15 ng/ml



#15 AR-1232-5

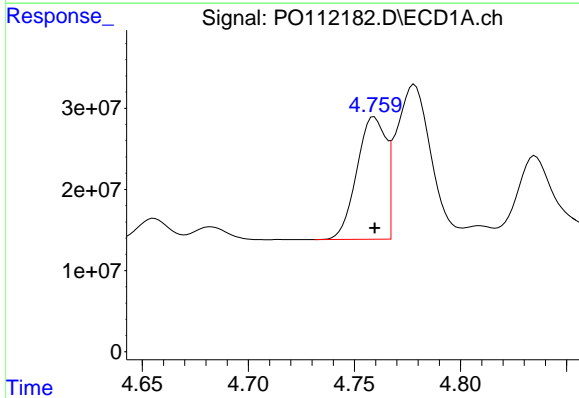
R.T.: 4.998 min
 Delta R.T.: -0.002 min
 Response: 79580572
 Conc: 1084.20 ng/ml

Instrument :
 ECD_O
 ClientSampleId :
 AR1242CCC500



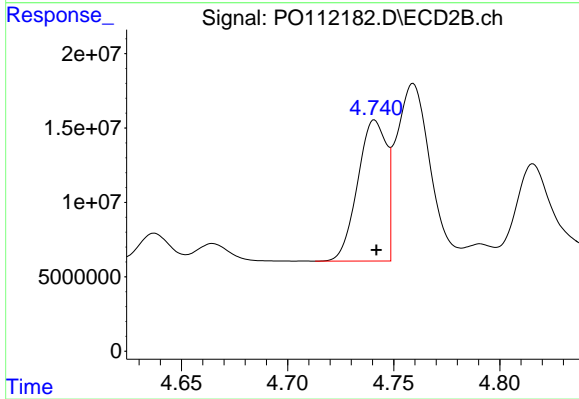
#15 AR-1232-5

R.T.: 5.190 min
 Delta R.T.: -0.001 min
 Response: 73193994
 Conc: 985.65 ng/ml



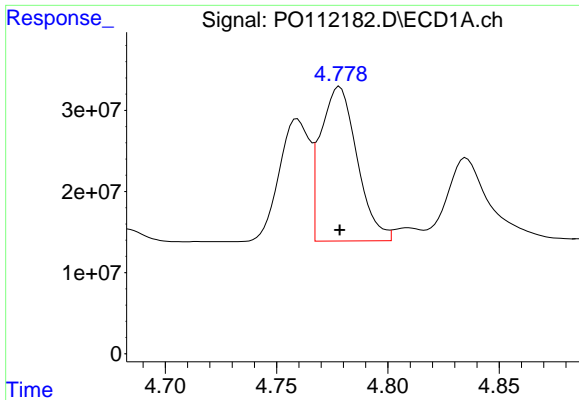
#16 AR-1242-1

R.T.: 4.759 min
 Delta R.T.: 0.000 min
 Response: 143591501
 Conc: 495.76 ng/ml



#16 AR-1242-1

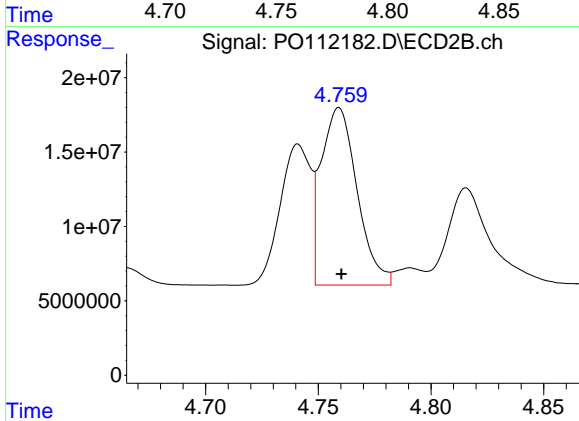
R.T.: 4.741 min
 Delta R.T.: 0.000 min
 Response: 89466228
 Conc: 461.50 ng/ml



#17 AR-1242-2

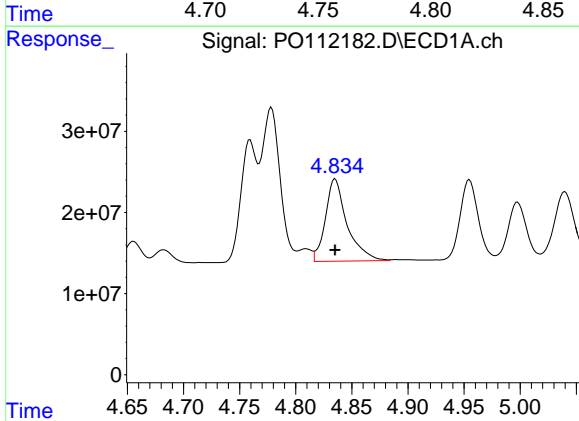
R.T.: 4.778 min
 Delta R.T.: 0.000 min
 Response: 216990136
 Conc: 509.46 ng/ml

Instrument :
 ECD_O
 ClientSampleId :
 AR1242CCC500



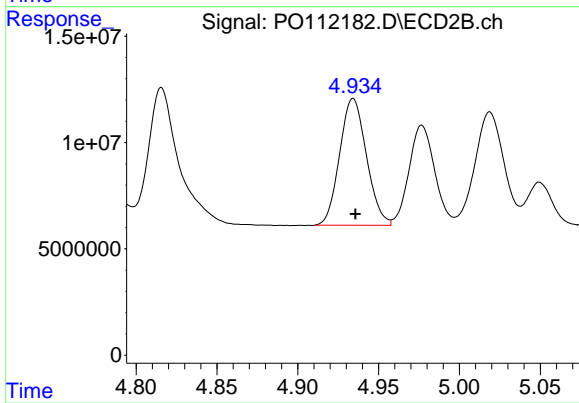
#17 AR-1242-2

R.T.: 4.759 min
 Delta R.T.: -0.001 min
 Response: 132462047
 Conc: 467.48 ng/ml



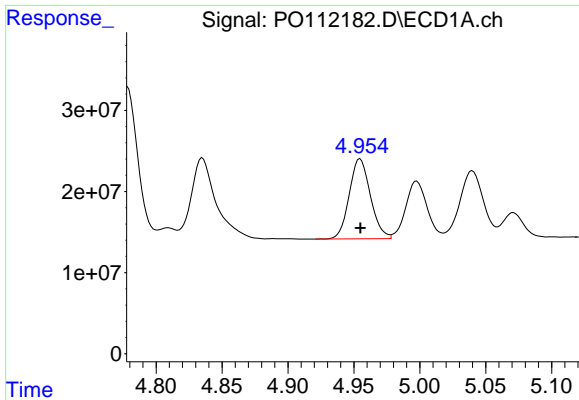
#18 AR-1242-3

R.T.: 4.835 min
 Delta R.T.: 0.000 min
 Response: 136306923
 Conc: 498.04 ng/ml



#18 AR-1242-3

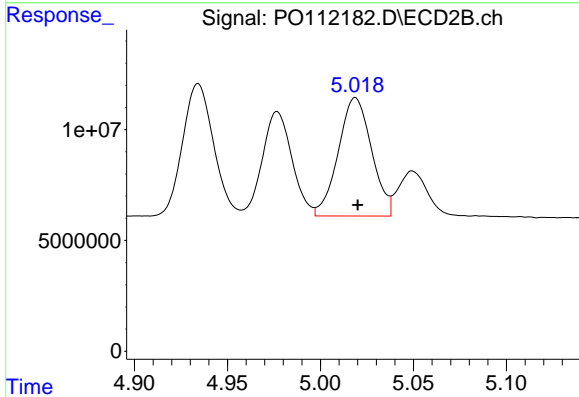
R.T.: 4.934 min
 Delta R.T.: -0.001 min
 Response: 68811848
 Conc: 472.36 ng/ml



#19 AR-1242-4

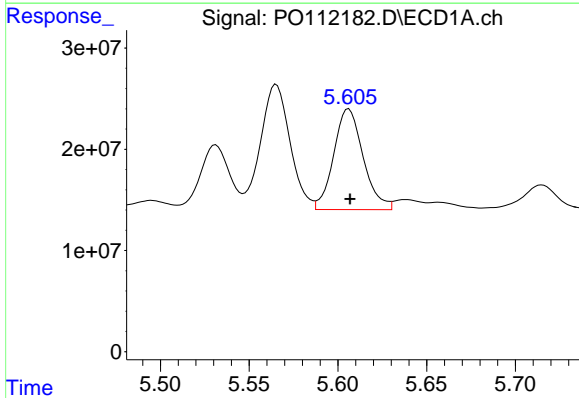
R.T.: 4.955 min
 Delta R.T.: 0.000 min
 Response: 110363217
 Conc: 489.81 ng/ml

Instrument :
 ECD_O
 ClientSampleId :
 AR1242CCC500



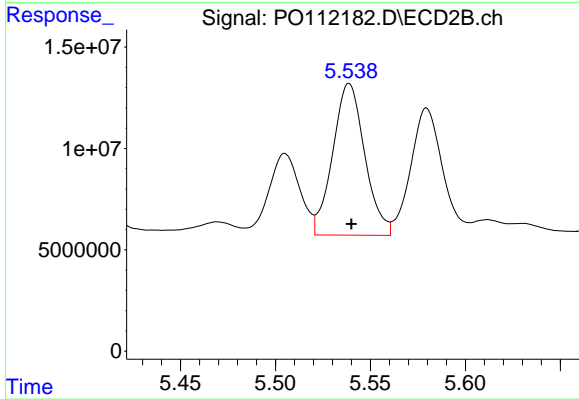
#19 AR-1242-4

R.T.: 5.019 min
 Delta R.T.: -0.001 min
 Response: 66658098
 Conc: 469.95 ng/ml



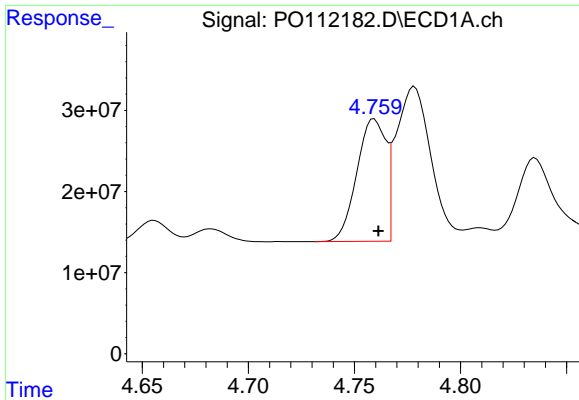
#20 AR-1242-5

R.T.: 5.606 min
 Delta R.T.: 0.000 min
 Response: 115109303
 Conc: 543.81 ng/ml



#20 AR-1242-5

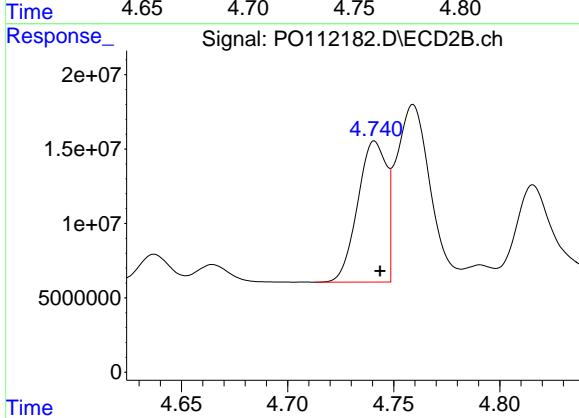
R.T.: 5.539 min
 Delta R.T.: -0.001 min
 Response: 87882526
 Conc: 483.58 ng/ml



#21 AR-1248-1

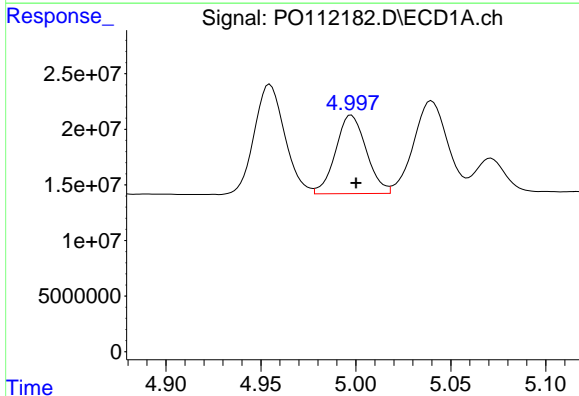
R.T.: 4.759 min
 Delta R.T.: -0.002 min
 Response: 143591501
 Conc: 632.84 ng/ml

Instrument :
 ECD_O
 ClientSampleId :
 AR1242CCC500



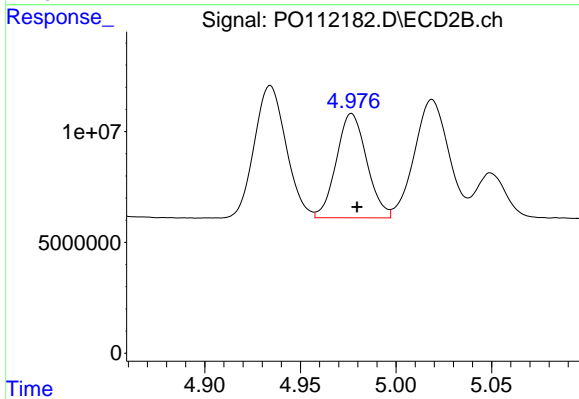
#21 AR-1248-1

R.T.: 4.741 min
 Delta R.T.: -0.002 min
 Response: 89466228
 Conc: 579.56 ng/ml



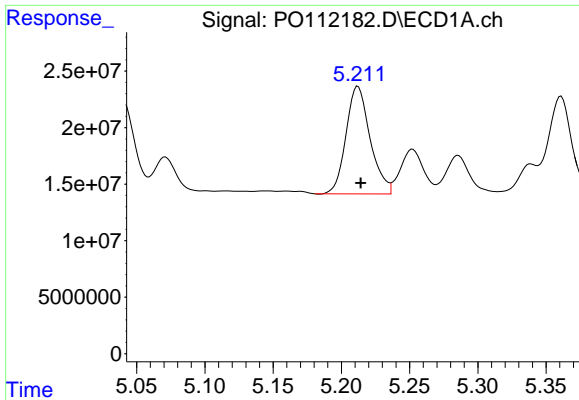
#22 AR-1248-2

R.T.: 4.998 min
 Delta R.T.: -0.002 min
 Response: 79580572
 Conc: 258.11 ng/ml



#22 AR-1248-2

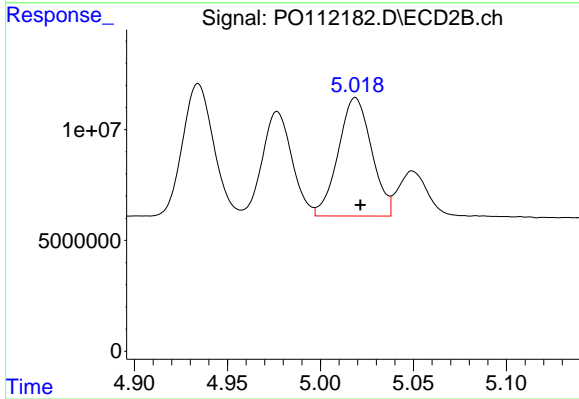
R.T.: 4.977 min
 Delta R.T.: -0.003 min
 Response: 52172336
 Conc: 253.55 ng/ml



#23 AR-1248-3

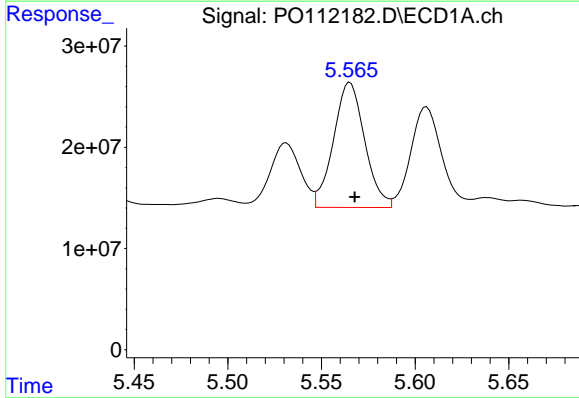
R.T.: 5.212 min
Delta R.T.: -0.002 min
Response: 117059941
Conc: 287.39 ng/ml

Instrument :
ECD_O
ClientSampleId :
AR1242CCC500



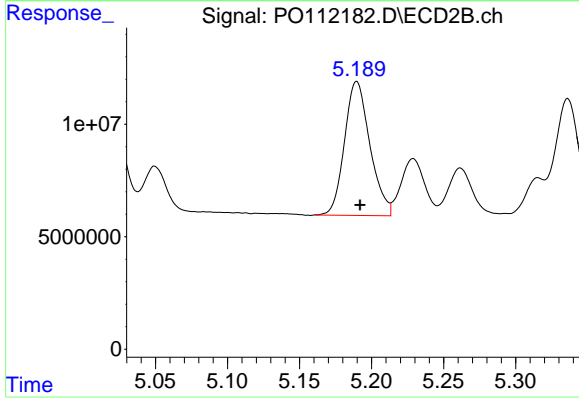
#23 AR-1248-3

R.T.: 5.019 min
Delta R.T.: -0.003 min
Response: 66658098
Conc: 310.33 ng/ml



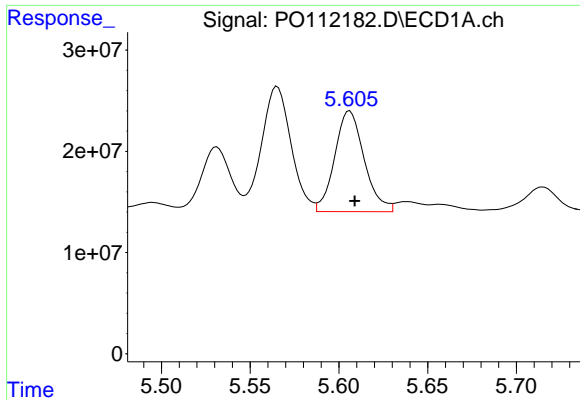
#24 AR-1248-4

R.T.: 5.565 min
Delta R.T.: -0.002 min
Response: 143380303
Conc: 248.43 ng/ml



#24 AR-1248-4

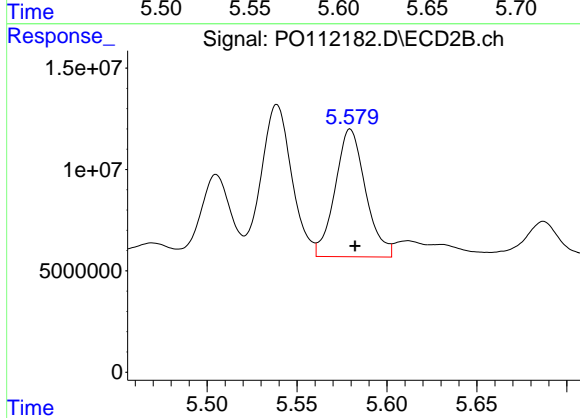
R.T.: 5.190 min
Delta R.T.: -0.002 min
Response: 73193994
Conc: 282.90 ng/ml



#25 AR-1248-5

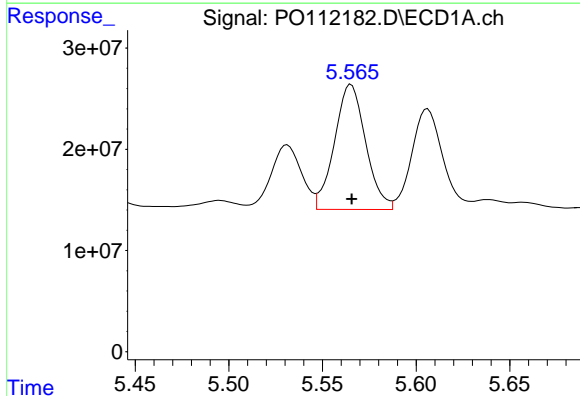
R.T.: 5.606 min
 Delta R.T.: -0.003 min
 Response: 115109303
 Conc: 294.92 ng/ml

Instrument :
 ECD_O
 ClientSampleId :
 AR1242CCC500



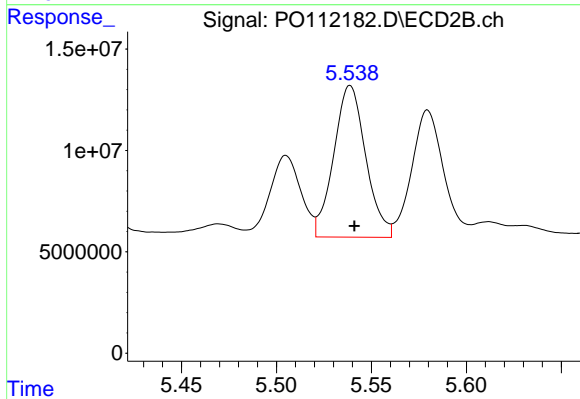
#25 AR-1248-5

R.T.: 5.580 min
 Delta R.T.: -0.003 min
 Response: 74285884
 Conc: 296.49 ng/ml



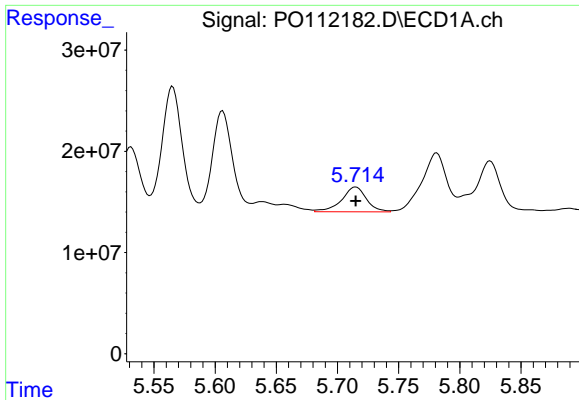
#26 AR-1254-1

R.T.: 5.565 min
 Delta R.T.: 0.000 min
 Response: 143380303
 Conc: 233.10 ng/ml



#26 AR-1254-1

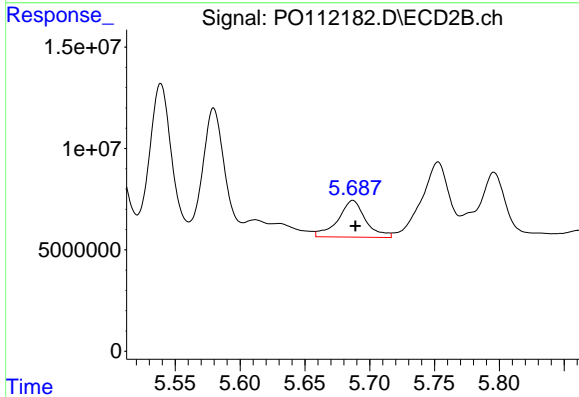
R.T.: 5.539 min
 Delta R.T.: -0.002 min
 Response: 87882526
 Conc: 230.56 ng/ml



#27 AR-1254-2

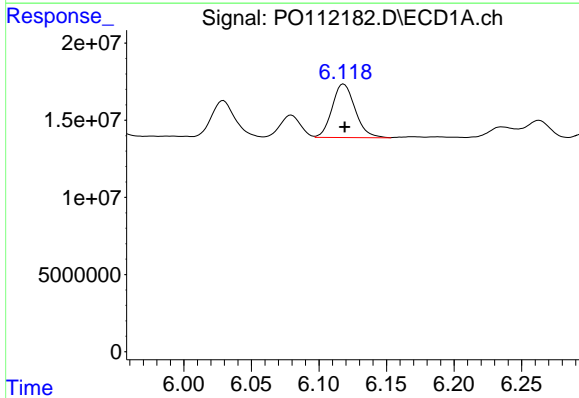
R.T.: 5.715 min
 Delta R.T.: 0.000 min
 Response: 34886941
 Conc: 65.13 ng/ml

Instrument :
 ECD_O
 ClientSampleId :
 AR1242CCC500



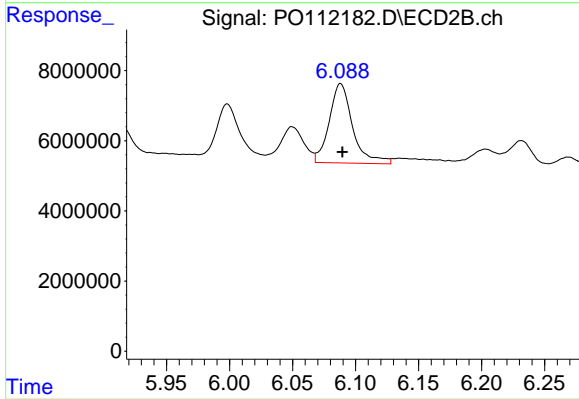
#27 AR-1254-2

R.T.: 5.687 min
 Delta R.T.: -0.002 min
 Response: 26923503
 Conc: 81.14 ng/ml



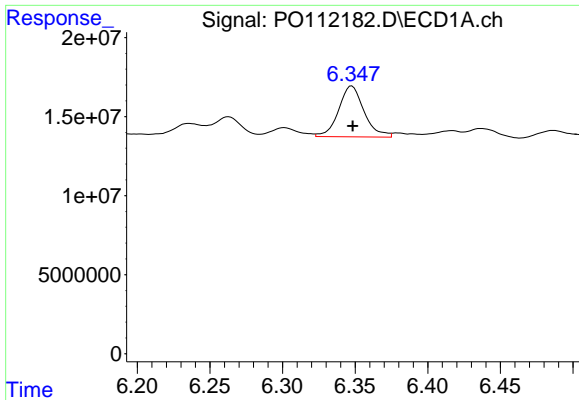
#28 AR-1254-3

R.T.: 6.118 min
 Delta R.T.: 0.000 min
 Response: 41111426
 Conc: 48.97 ng/ml



#28 AR-1254-3

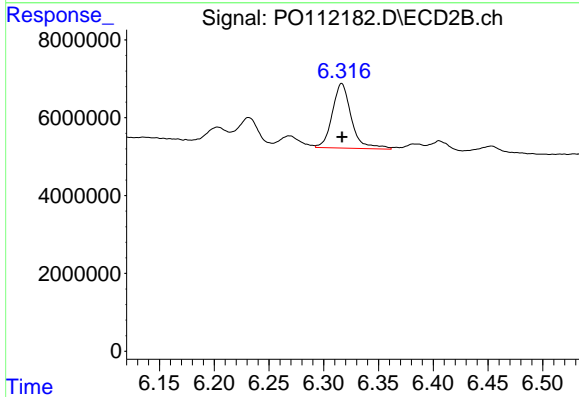
R.T.: 6.088 min
 Delta R.T.: -0.001 min
 Response: 29288391
 Conc: 60.76 ng/ml



#29 AR-1254-4

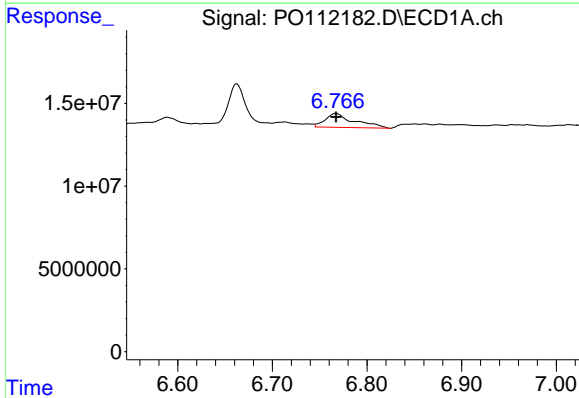
R.T.: 6.348 min
 Delta R.T.: 0.000 min
 Response: 39245914
 Conc: 81.59 ng/ml

Instrument :
 ECD_O
 ClientSampleId :
 AR1242CCC500



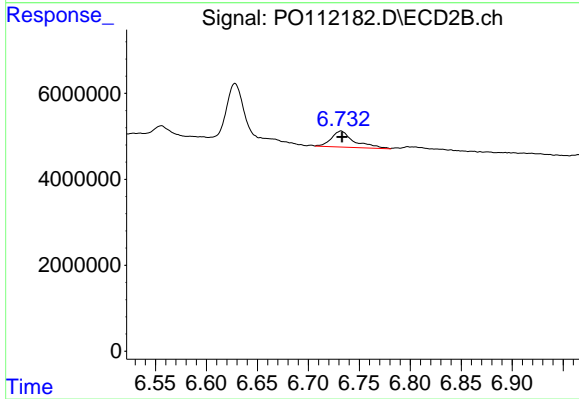
#29 AR-1254-4

R.T.: 6.316 min
 Delta R.T.: 0.000 min
 Response: 20105313
 Conc: 77.12 ng/ml



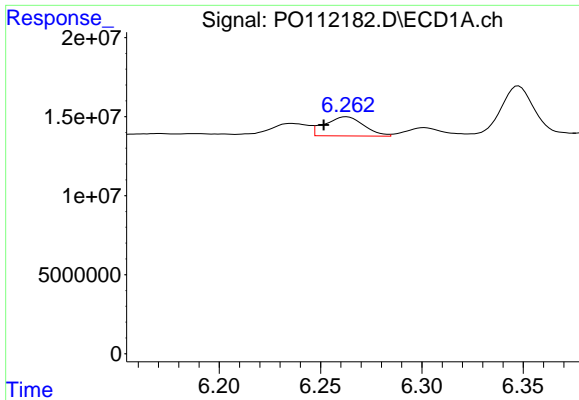
#30 AR-1254-5

R.T.: 6.767 min
 Delta R.T.: 0.000 min
 Response: 18162108
 Conc: 23.47 ng/ml



#30 AR-1254-5

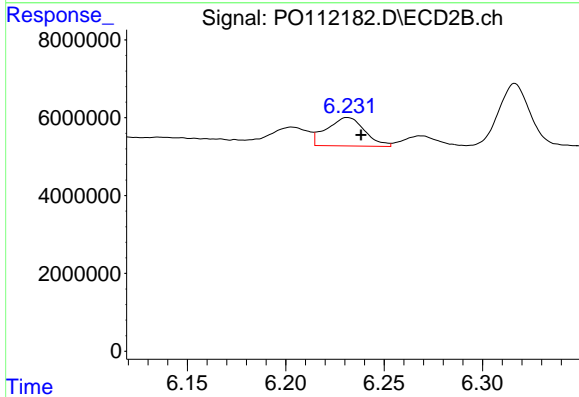
R.T.: 6.732 min
 Delta R.T.: -0.001 min
 Response: 5764442
 Conc: 16.18 ng/ml



#31 AR-1260-1

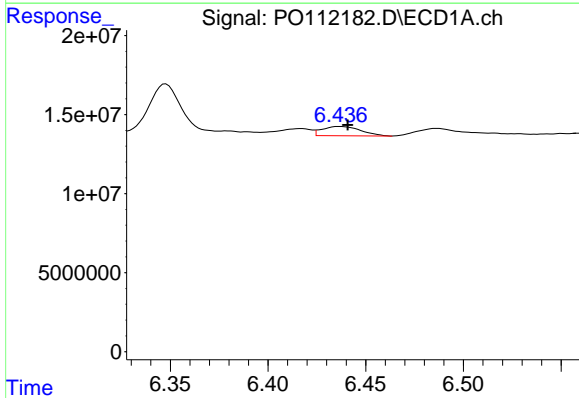
R.T.: 6.263 min
 Delta R.T.: 0.011 min
 Response: 16196908
 Conc: 32.31 ng/ml

Instrument :
 ECD_O
 ClientSampleId :
 AR1242CCC500



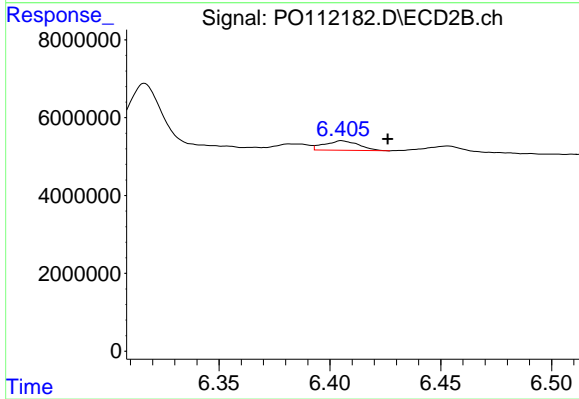
#31 AR-1260-1

R.T.: 6.231 min
 Delta R.T.: -0.007 min
 Response: 9789946
 Conc: 34.89 ng/ml



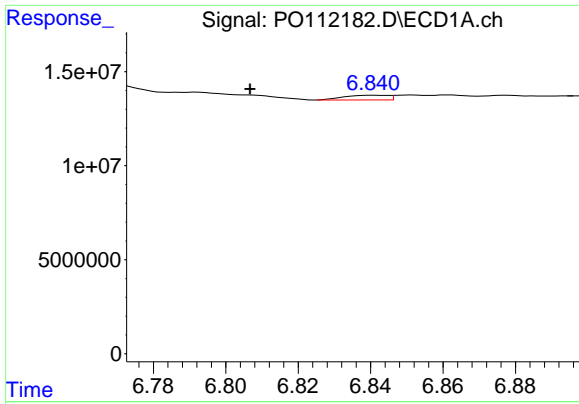
#32 AR-1260-2

R.T.: 6.437 min
 Delta R.T.: -0.004 min
 Response: 8087038
 Conc: 10.96 ng/ml



#32 AR-1260-2

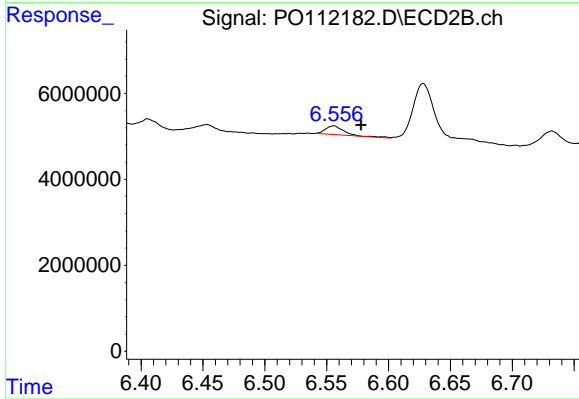
R.T.: 6.405 min
 Delta R.T.: -0.021 min
 Response: 2631488
 Conc: 7.74 ng/ml



#33 AR-1260-3

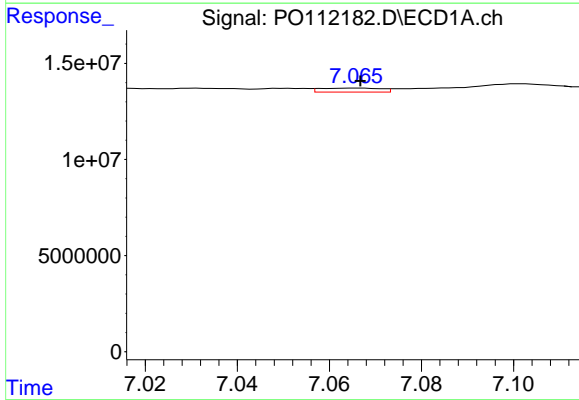
R.T.: 6.841 min
 Delta R.T.: 0.035 min
 Response: 2114759
 Conc: 3.23 ng/ml

Instrument :
 ECD_O
 ClientSampleId :
 AR1242CCC500



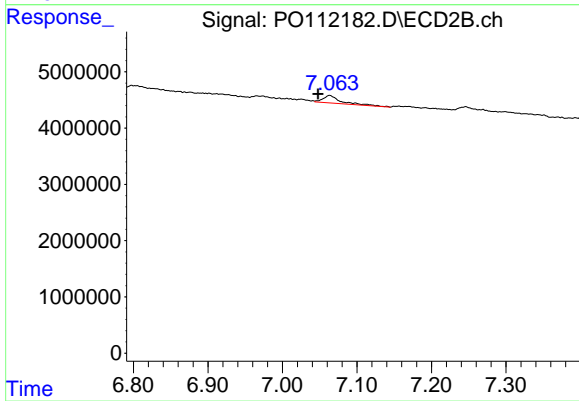
#33 AR-1260-3

R.T.: 6.556 min
 Delta R.T.: -0.022 min
 Response: 2224980
 Conc: 8.07 ng/ml



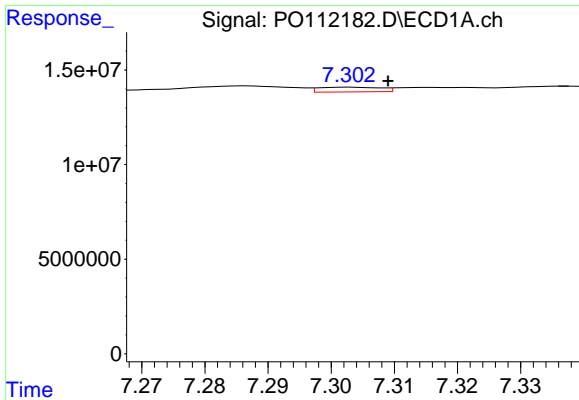
#34 AR-1260-4

R.T.: 7.066 min
 Delta R.T.: 0.000 min
 Response: 1897915
 Conc: 4.36 ng/ml



#34 AR-1260-4

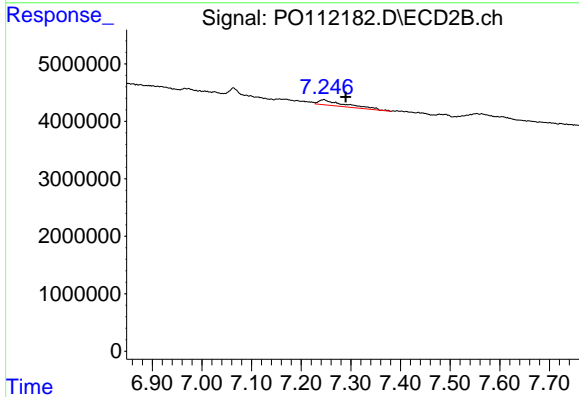
R.T.: 7.063 min
 Delta R.T.: 0.016 min
 Response: 2247528
 Conc: 11.20 ng/ml



#35 AR-1260-5

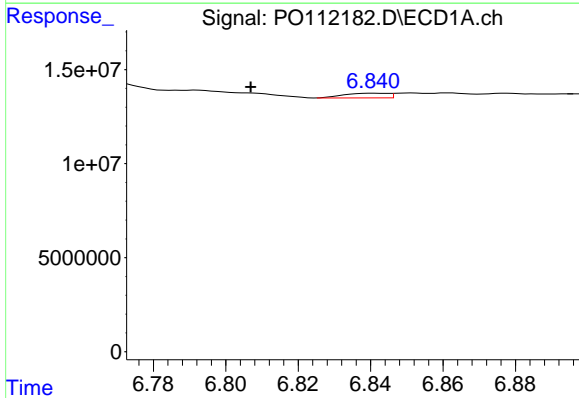
R.T.: 7.303 min
 Delta R.T.: -0.006 min
 Response: 1712942
 Conc: 1.36 ng/ml

Instrument :
 ECD_O
 ClientSampleId :
 AR1242CCC500



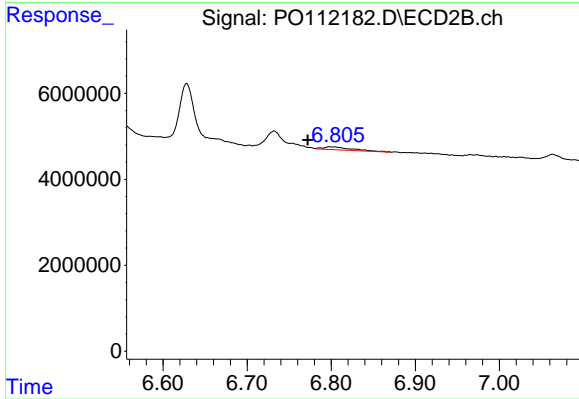
#35 AR-1260-5

R.T.: 7.246 min
 Delta R.T.: -0.044 min
 Response: 3505588
 Conc: 7.83 ng/ml



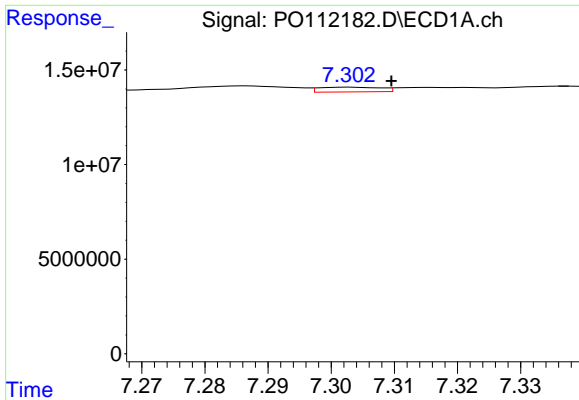
#36 AR-1262-1

R.T.: 6.841 min
 Delta R.T.: 0.034 min
 Response: 2114759
 Conc: 2.07 ng/ml



#36 AR-1262-1

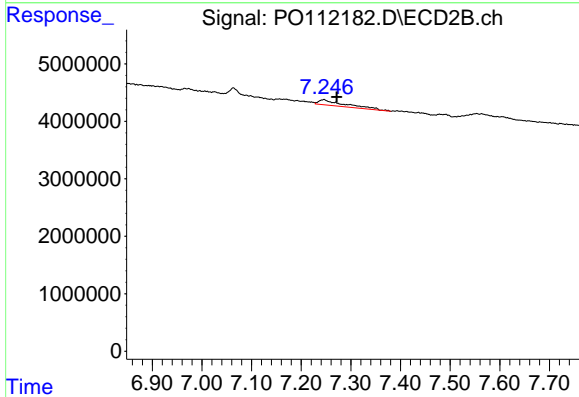
R.T.: 6.798 min
 Delta R.T.: 0.026 min
 Response: 1449435
 Conc: 3.56 ng/ml



#37 AR-1262-2

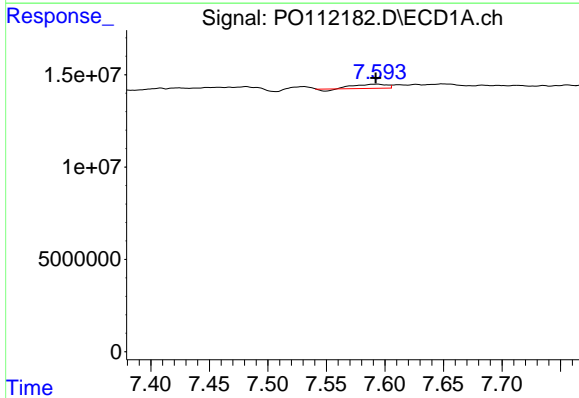
R.T.: 7.303 min
 Delta R.T.: -0.007 min
 Response: 1712942
 Conc: 1.04 ng/ml

Instrument :
 ECD_O
 ClientSampleId :
 AR1242CCC500



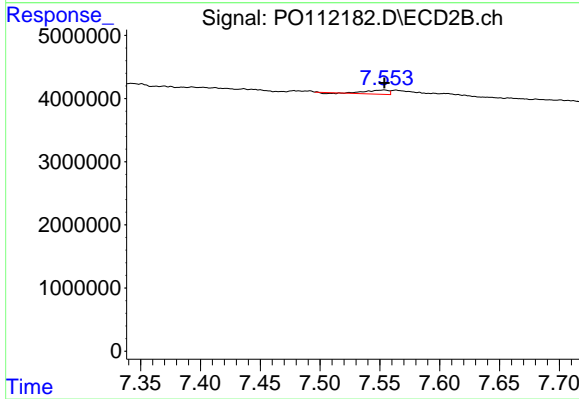
#37 AR-1262-2

R.T.: 7.246 min
 Delta R.T.: -0.026 min
 Response: 3505588
 Conc: 6.84 ng/ml



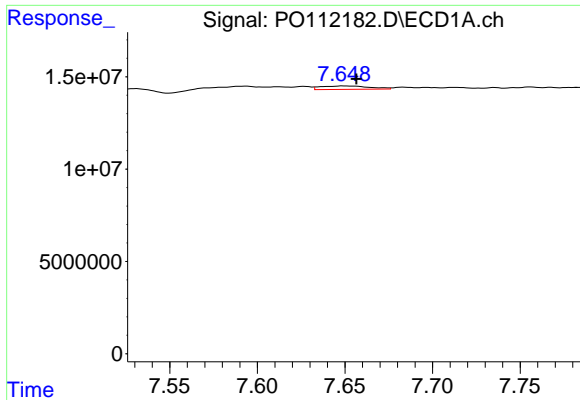
#38 AR-1262-3

R.T.: 7.594 min
 Delta R.T.: 0.002 min
 Response: 3925914
 Conc: 6.12 ng/ml



#38 AR-1262-3

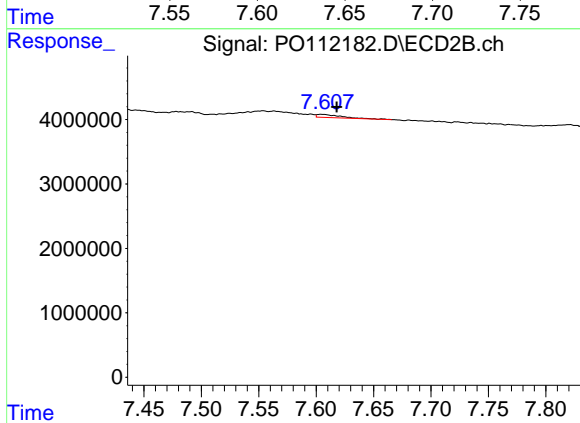
R.T.: 7.554 min
 Delta R.T.: 0.000 min
 Response: 786700
 Conc: 4.38 ng/ml



#39 AR-1262-4

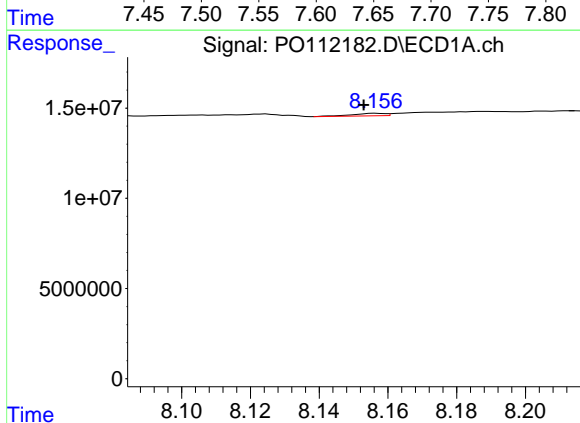
R.T.: 7.649 min
 Delta R.T.: -0.007 min
 Response: 3648214
 Conc: 3.40 ng/ml

Instrument :
 ECD_O
 ClientSampleId :
 AR1242CCC500



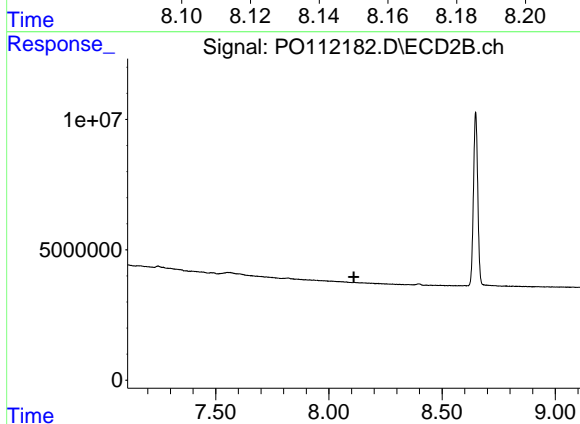
#39 AR-1262-4

R.T.: 7.605 min
 Delta R.T.: -0.013 min
 Response: 636209
 Conc: 2.19 ng/ml



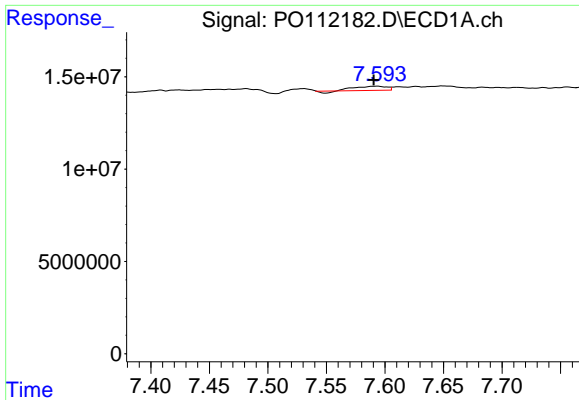
#40 AR-1262-5

R.T.: 8.157 min
 Delta R.T.: 0.004 min
 Response: 940293
 Conc: 2.10 ng/ml



#40 AR-1262-5

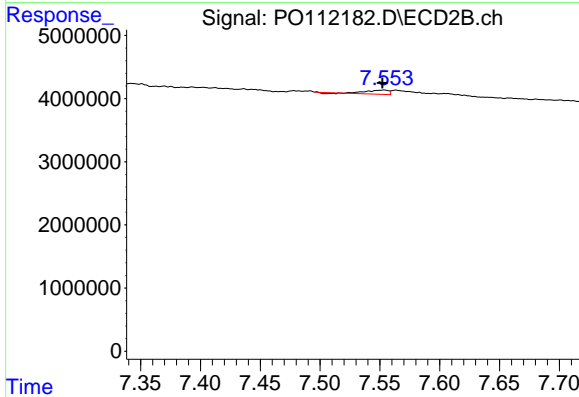
R.T.: 0.000 min
 Exp R.T. : 8.110 min
 Response: 0
 Conc: N.D.



#41 AR-1268-1

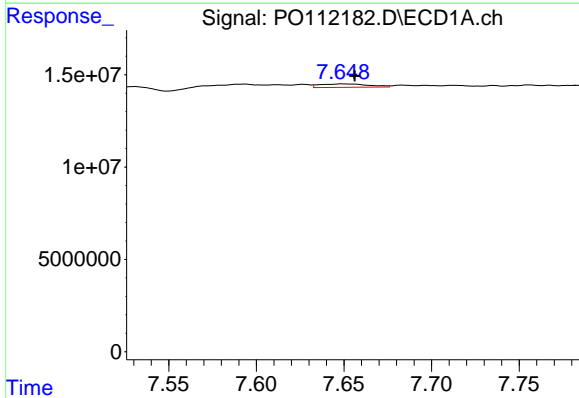
R.T.: 7.594 min
 Delta R.T.: 0.003 min
 Response: 3925914
 Conc: 2.14 ng/ml

Instrument :
 ECD_O
 ClientSampleId :
 AR1242CCC500



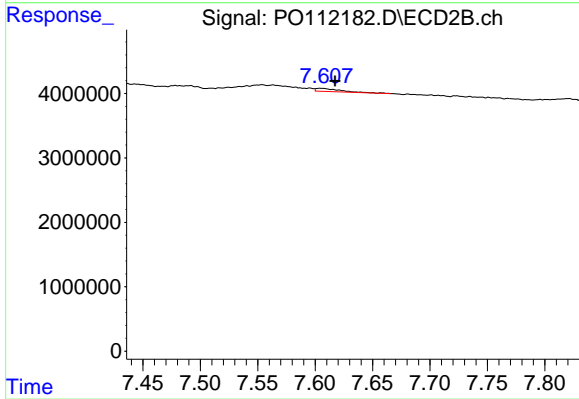
#41 AR-1268-1

R.T.: 7.554 min
 Delta R.T.: 0.002 min
 Response: 786700
 Conc: 1.60 ng/ml



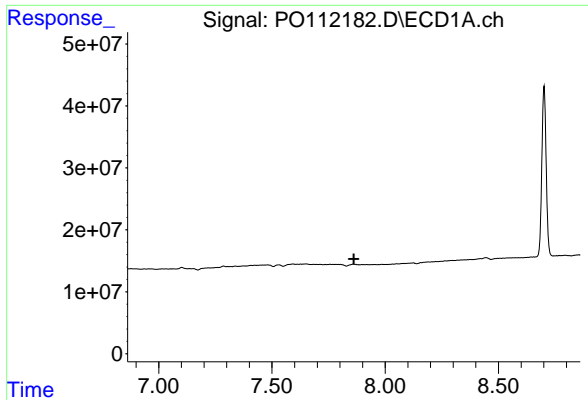
#42 AR-1268-2

R.T.: 7.649 min
 Delta R.T.: -0.007 min
 Response: 3648214
 Conc: 2.34 ng/ml



#42 AR-1268-2

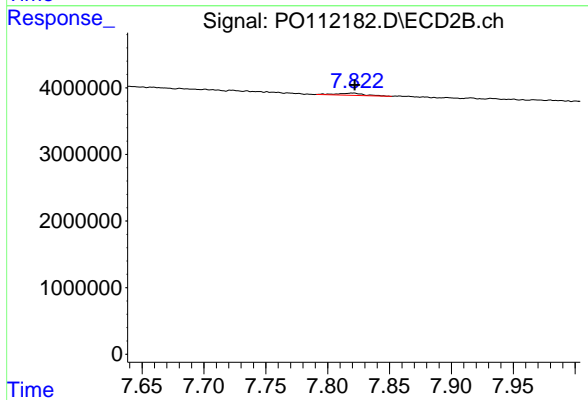
R.T.: 7.605 min
 Delta R.T.: -0.012 min
 Response: 636209
 Conc: 1.53 ng/ml



#43 AR-1268-3

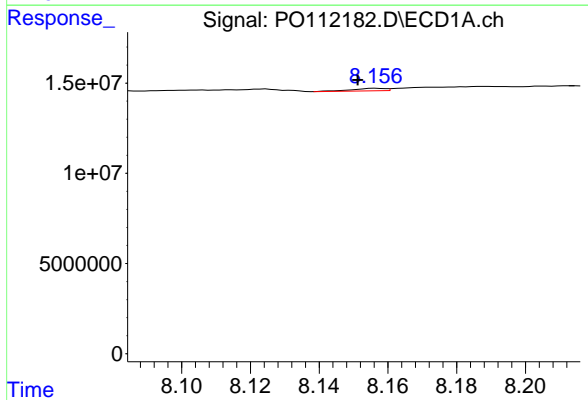
R.T.: 7.857 min
 Delta R.T.: -0.005 min
 Response: -394854
 Conc: N.D.

Instrument :
 ECD_O
 ClientSampleId :
 AR1242CCC500



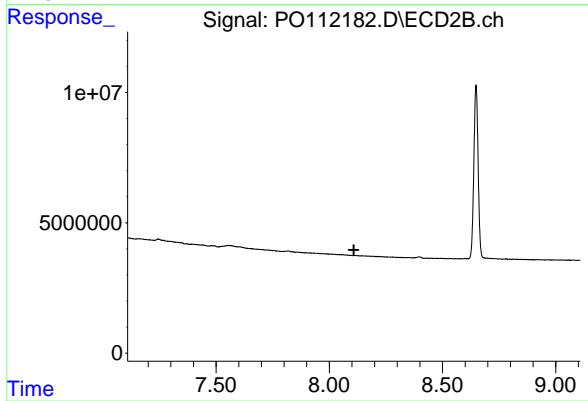
#43 AR-1268-3

R.T.: 7.820 min
 Delta R.T.: -0.001 min
 Response: 520541
 Conc: 1.65 ng/ml



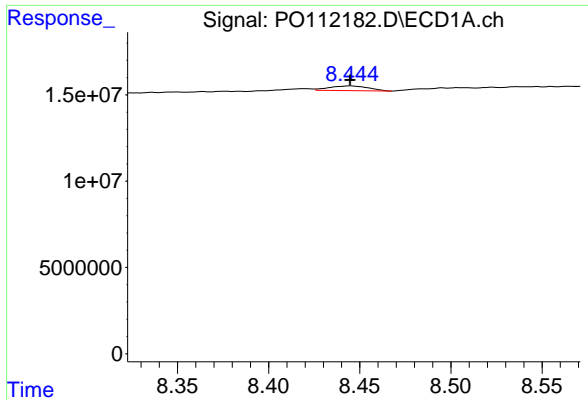
#44 AR-1268-4

R.T.: 8.157 min
 Delta R.T.: 0.005 min
 Response: 940293
 Conc: 1.96 ng/ml



#44 AR-1268-4

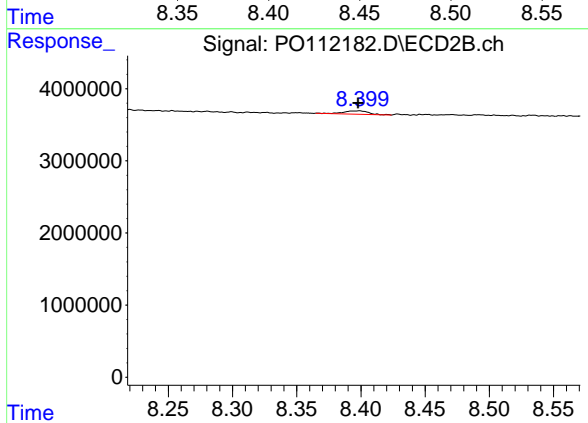
R.T.: 0.000 min
 Exp R.T. : 8.108 min
 Response: 0
 Conc: N.D.



#45 AR-1268-5

R.T.: 8.445 min
Delta R.T.: 0.000 min
Response: 4161873
Conc: 1.28 ng/ml

Instrument :
ECD_O
ClientSampleId :
AR1242CCC500



#45 AR-1268-5

R.T.: 8.398 min
Delta R.T.: 0.000 min
Response: 621937
Conc: 0.86 ng/ml