

Data Path : Z:\pestpcbsrv\HPCHEM1\ECD_O\Data\P0071025\
 Data File : PO112183.D
 Signal(s) : Signal #1: ECD1A.ch Signal #2: ECD2B.ch
 Acq On : 10 Jul 2025 10:32
 Operator : YP/AJ
 Sample : AR1248CCC500
 Misc :
 ALS Vial : 5 Sample Multiplier: 1

Instrument :
 ECD_O
 ClientSampleId :
 AR1248CCC500

Integration File signal 1: autoint1.e
 Integration File signal 2: autoint2.e
 Quant Time: Jul 10 11:18:44 2025
 Quant Method : Z:\pestpcbsrv\HPCHEM1\ECD_O\methods\P0070825.M
 Quant Title : GC EXTRACTABLES
 QLast Update : Wed Jul 09 10:50:50 2025
 Response via : Initial Calibration
 Integrator: ChemStation

Volume Inj. : 2 µl
 Signal #1 Phase : ZB-MR2 Signal #2 Phase: ZB-MR2
 Signal #1 Info : 30Mx0.32mmx 0.50µ Signal #2 Info : 30M x 0.32mm x 0.25µm

Compound	RT#1	RT#2	Resp#1	Resp#2	ng/ml	ng/ml
System Monitoring Compounds						
1) SA Tetrachlo...	3.671	3.664	513.6E6	312.0E6	51.909	48.973
2) SA Decachlor...	8.702	8.647	369.2E6	87946049	54.005	51.029
Target Compounds						
3) L1 AR-1016-1	4.758	4.758	110.2E6	75086771	323.957	336.962
4) L1 AR-1016-2	4.777	4.790	117.8E6	15067331	236.934	45.784 #
5) L1 AR-1016-3	4.834	4.934	66325778	46867377	204.890	275.907 #
6) L1 AR-1016-4	4.955	5.018	72953025	99184519	284.085	722.774 #
7) L1 AR-1016-5	5.210	5.228	190.8E6	40471016	697.386	234.682 #
8) L2 AR-1221-1	3.885	3.876	1072767	939310	9.199	11.414
9) L2 AR-1221-2	3.972	3.961	7464208	5199249	94.675	87.598
10) L2 AR-1221-3	4.045	4.034	7618070	5761117	28.259	30.518
11) L3 AR-1232-1	4.045	4.034	7618070	5761117	35.488	38.382
12) L3 AR-1232-2	4.536	4.758	49254426	75086771	433.437	490.488
13) L3 AR-1232-3	4.777	4.934	117.8E6	46867377	514.502	620.710
14) L3 AR-1232-4	4.955	5.018	72953025	99184519	638.278	1503.065 #
15) L3 AR-1232-5	4.996	5.188	148.1E6	118.8E6	2017.279	1599.571
16) L4 AR-1242-1	4.758	4.740	110.2E6	69329192	380.425	357.628
17) L4 AR-1242-2	4.777	4.758	117.8E6	75086771	276.638	264.994
18) L4 AR-1242-3	4.834	4.934	66325778	46867377	242.343	321.721 #
19) L4 AR-1242-4	4.955	5.018	72953025	99184519	323.778	699.267 #
20) L4 AR-1242-5	5.605	5.538	191.8E6	167.5E6	905.908	921.886
21) L5 AR-1248-1	4.758	4.740	110.2E6	69329192	485.611	449.116
22) L5 AR-1248-2	4.996	4.976	148.1E6	94761481	480.235	460.527
23) L5 AR-1248-3	5.210	5.018	190.8E6	99184519	468.546	461.756
24) L5 AR-1248-4	5.563	5.188	282.6E6	118.8E6	489.724	459.110
25) L5 AR-1248-5	5.605	5.579	191.8E6	117.8E6	491.294	470.363
26) L6 AR-1254-1	5.563	5.538	282.6E6	167.5E6	459.498	439.539
27) L6 AR-1254-2	5.713	5.686	80737218	55154945	150.717	166.224
28) L6 AR-1254-3	6.117	6.087	117.6E6	71844186	140.080	149.041
29) L6 AR-1254-4	6.347	6.315	95180877	48193415	197.874	184.865
30) L6 AR-1254-5	6.765	6.731	27137597	14136148	35.064	39.669
31) L7 AR-1260-1	6.262	6.231	54626431	35981021	108.983	128.246
32) L7 AR-1260-2	6.438	6.405	12746665	5332283	17.269	15.683
33) L7 AR-1260-3	6.836	6.555	4814430	5076288	7.345	18.420 #
34) L7 AR-1260-4	7.069	7.063	707638	3169224	1.626	15.795 #
35) L7 AR-1260-5	7.308	7.297	3534722	477270	2.800	1.066 #
36) L8 AR-1262-1	6.836	6.798	4814430	2058632	4.712	5.054
37) L8 AR-1262-2	7.308	7.269	3534722	1785864	2.156	3.484 #
38) L8 AR-1262-3	7.595	7.550	4294943	877557	6.690	4.888 #
39) L8 AR-1262-4	7.652	7.612	6358454	1327871	5.935	4.564
40) L8 AR-1262-5	8.153	8.109	599478	78204	1.338	0.739 #
41) L9 AR-1268-1	7.595	7.550	4294943	877557	2.337	1.786

Data Path : Z:\pestpcbsrv\HPCHEM1\ECD_0\Data\P0071025\
 Data File : P0112183.D
 Signal(s) : Signal #1: ECD1A.ch Signal #2: ECD2B.ch
 Acq On : 10 Jul 2025 10:32
 Operator : YP/AJ
 Sample : AR1248CCC500
 Misc :
 ALS Vial : 5 Sample Multiplier: 1

Instrument :
 ECD_0
 ClientSampleId :
 AR1248CCC500

Integration File signal 1: autoint1.e
 Integration File signal 2: autoint2.e
 Quant Time: Jul 10 11:18:44 2025
 Quant Method : Z:\pestpcbsrv\HPCHEM1\ECD_0\methods\P0070825.M
 Quant Title : GC EXTRACTABLES
 QLast Update : Wed Jul 09 10:50:50 2025
 Response via : Initial Calibration
 Integrator: ChemStation

Volume Inj. : 2 µl
 Signal #1 Phase : ZB-MR1 Signal #2 Phase: ZB-MR2
 Signal #1 Info : 30Mx0.32mmx 0.50µ Signal #2 Info : 30M x 0.32mm x 0.25µm

	Compound	RT#1	RT#2	Resp#1	Resp#2	ng/ml	ng/ml
42)	L9 AR-1268-2	7.652	7.612	6358454	1327871	4.082	3.183
43)	L9 AR-1268-3	7.864	7.820	2227109	466440	1.714	1.474
44)	L9 AR-1268-4	8.153	8.109	599478	78204	1.248	0.701 #
45)	L9 AR-1268-5	8.443	8.395	2718649	751136	0.833	1.034

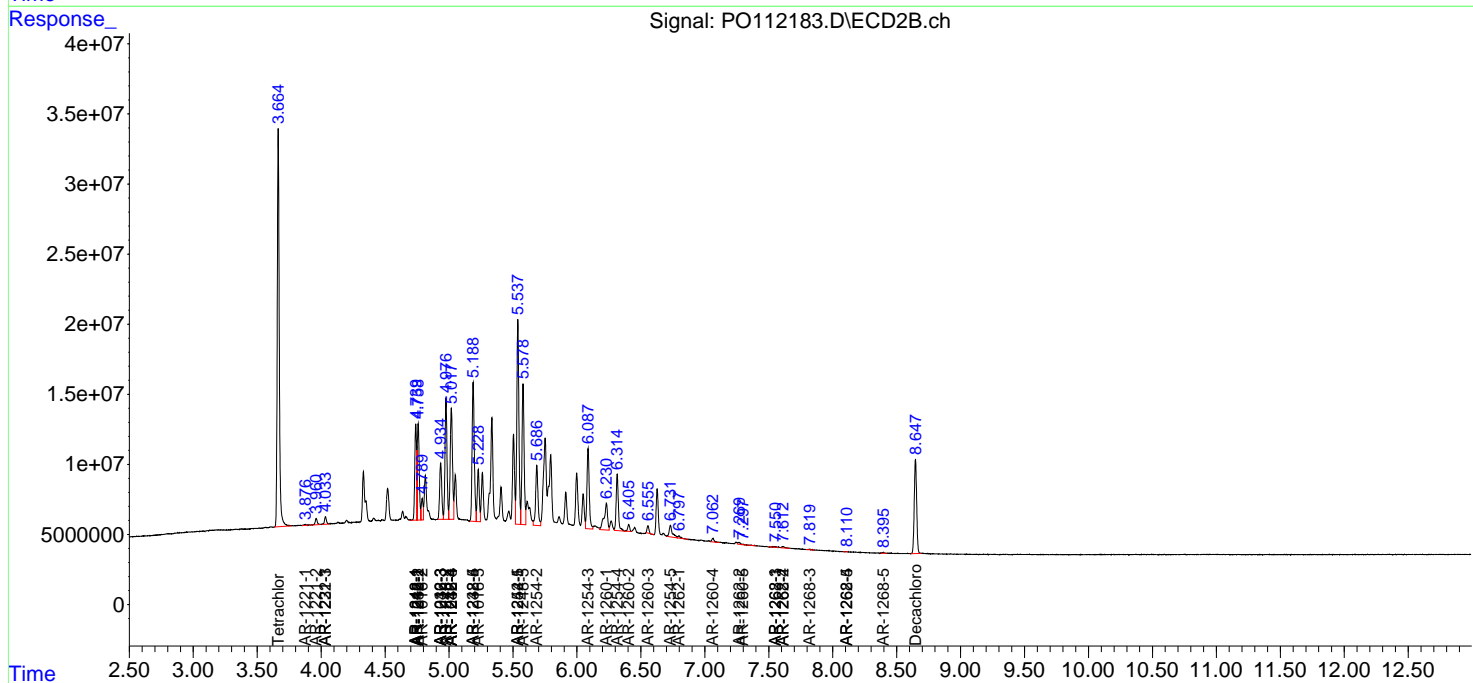
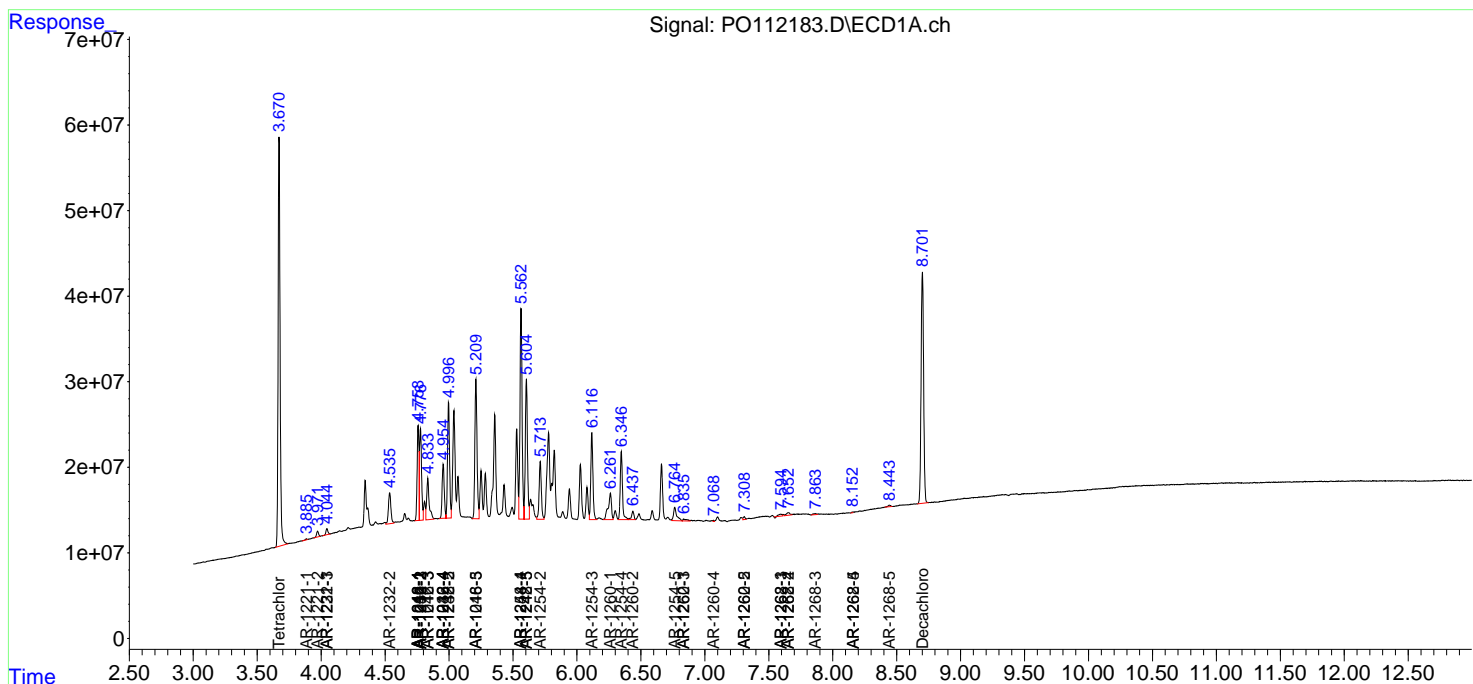
(f)=RT Delta > 1/2 Window (#)=Amounts differ by > 25% (m)=manual int.

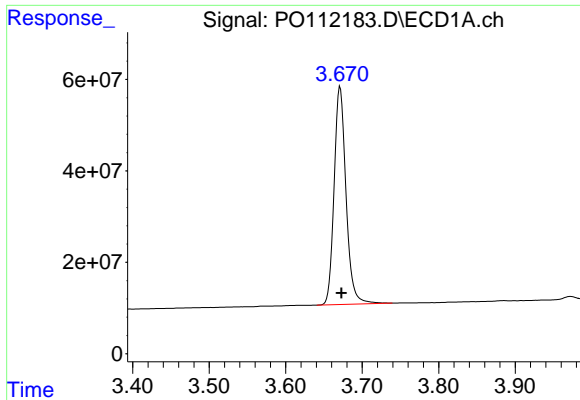
Data Path : Z:\pestpcbsrv\HPCHEM1\ECD_O\Data\PO071025\
 Data File : PO112183.D
 Signal(s) : Signal #1: ECD1A.ch Signal #2: ECD2B.ch
 Acq On : 10 Jul 2025 10:32
 Operator : YP/AJ
 Sample : AR1248CCC500
 Misc :
 ALS Vial : 5 Sample Multiplier: 1

Instrument :
 ECD_O
 ClientSampleId :
 AR1248CCC500

Integration File signal 1: autoint1.e
 Integration File signal 2: autoint2.e
 Quant Time: Jul 10 11:18:44 2025
 Quant Method : Z:\pestpcbsrv\HPCHEM1\ECD_O\methods\PO070825.M
 Quant Title : GC EXTRACTABLES
 QLast Update : Wed Jul 09 10:50:50 2025
 Response via : Initial Calibration
 Integrator: ChemStation

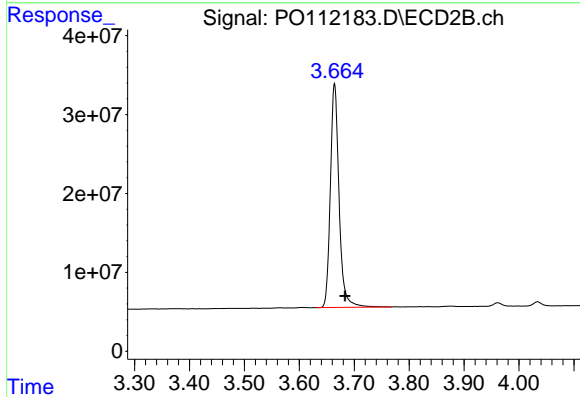
Volume Inj. : 2 µl
 Signal #1 Phase : ZB-MR1 Signal #2 Phase: ZB-MR2
 Signal #1 Info : 30Mx0.32mmx 0.50µ Signal #2 Info : 30M x 0.32mm x 0.25µm



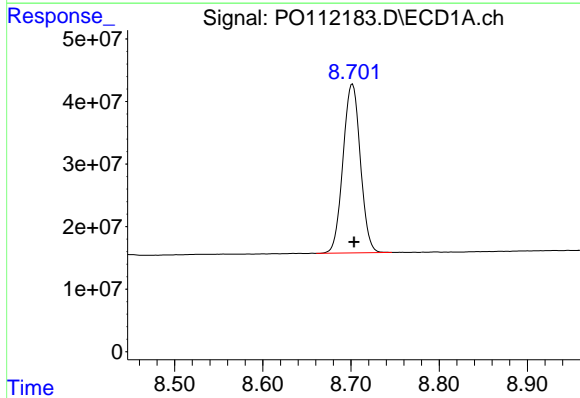


#1 Tetrachloro-m-xylene
 R.T.: 3.671 min
 Delta R.T.: -0.002 min
 Response: 513623894
 Conc: 51.91 ng/ml

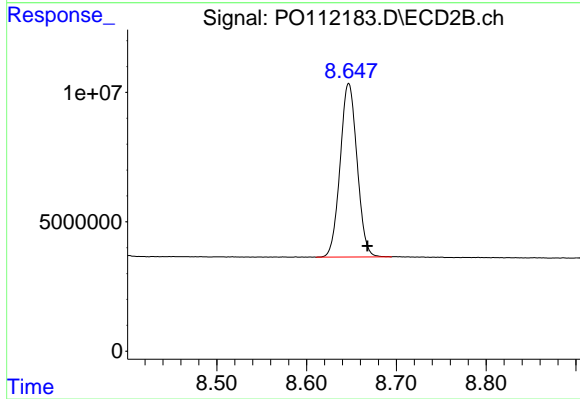
Instrument :
 ECD_O
 ClientSampleId :
 AR1248CCC500



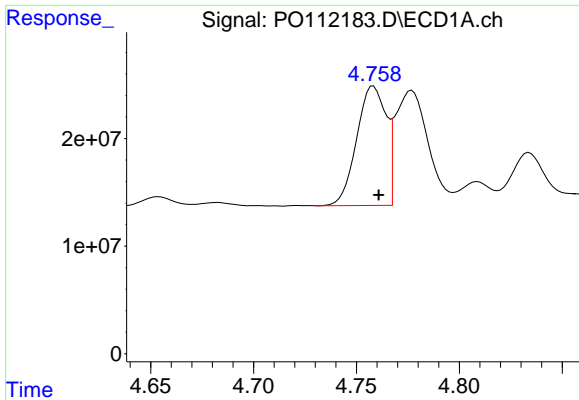
#1 Tetrachloro-m-xylene
 R.T.: 3.664 min
 Delta R.T.: -0.020 min
 Response: 312012996
 Conc: 48.97 ng/ml



#2 Decachlorobiphenyl
 R.T.: 8.702 min
 Delta R.T.: -0.002 min
 Response: 369237296
 Conc: 54.01 ng/ml



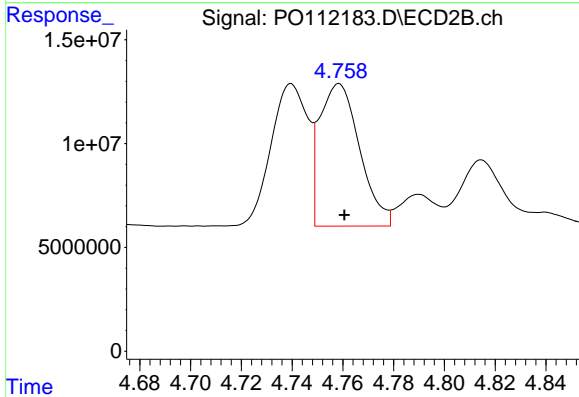
#2 Decachlorobiphenyl
 R.T.: 8.647 min
 Delta R.T.: -0.021 min
 Response: 87946049
 Conc: 51.03 ng/ml



#3 AR-1016-1

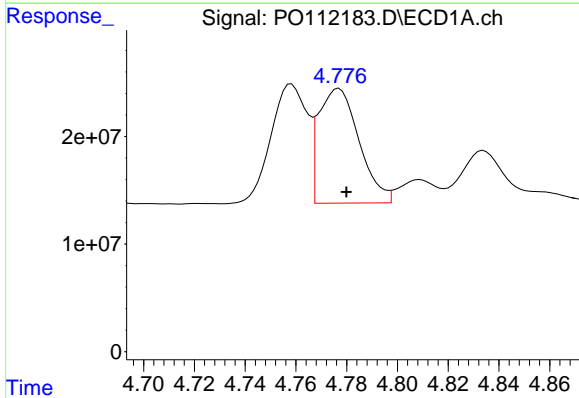
R.T.: 4.758 min
 Delta R.T.: -0.003 min
 Response: 110185051
 Conc: 323.96 ng/ml

Instrument :
 ECD_O
 ClientSampleId :
 AR1248CCC500



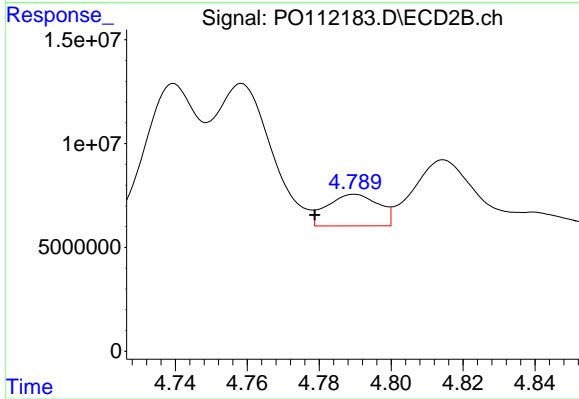
#3 AR-1016-1

R.T.: 4.758 min
 Delta R.T.: -0.002 min
 Response: 75086771
 Conc: 336.96 ng/ml



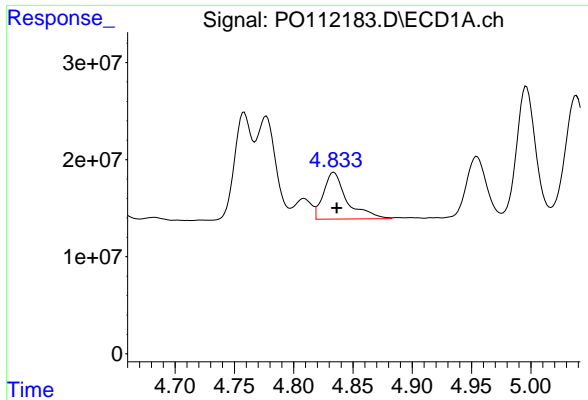
#4 AR-1016-2

R.T.: 4.777 min
 Delta R.T.: -0.003 min
 Response: 117825491
 Conc: 236.93 ng/ml



#4 AR-1016-2

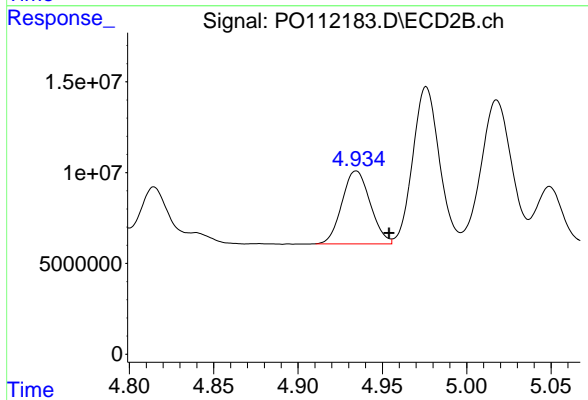
R.T.: 4.790 min
 Delta R.T.: 0.011 min
 Response: 15067331
 Conc: 45.78 ng/ml



#5 AR-1016-3

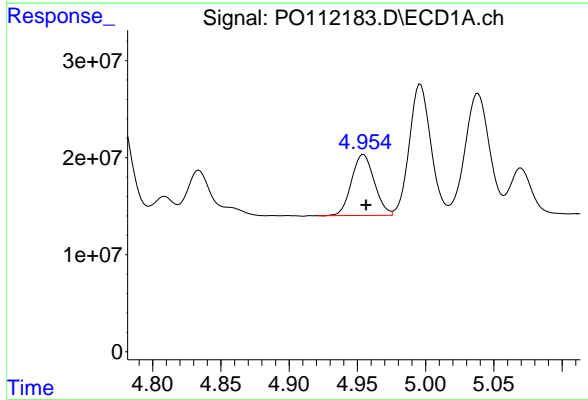
R.T.: 4.834 min
 Delta R.T.: -0.002 min
 Response: 66325778
 Conc: 204.89 ng/ml

Instrument :
 ECD_O
 ClientSampleId :
 AR1248CCC500



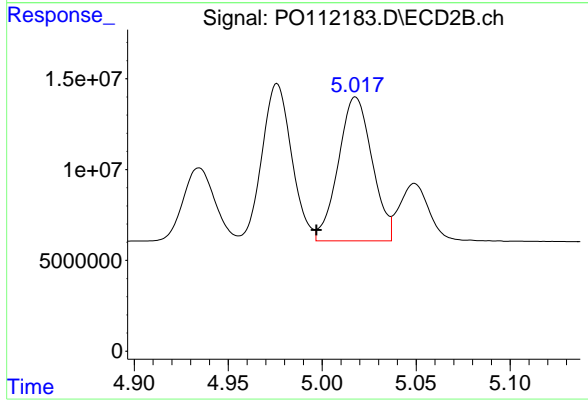
#5 AR-1016-3

R.T.: 4.934 min
 Delta R.T.: -0.019 min
 Response: 46867377
 Conc: 275.91 ng/ml



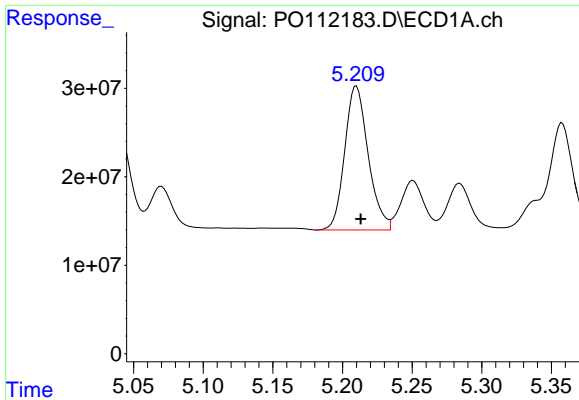
#6 AR-1016-4

R.T.: 4.955 min
 Delta R.T.: -0.002 min
 Response: 72953025
 Conc: 284.09 ng/ml



#6 AR-1016-4

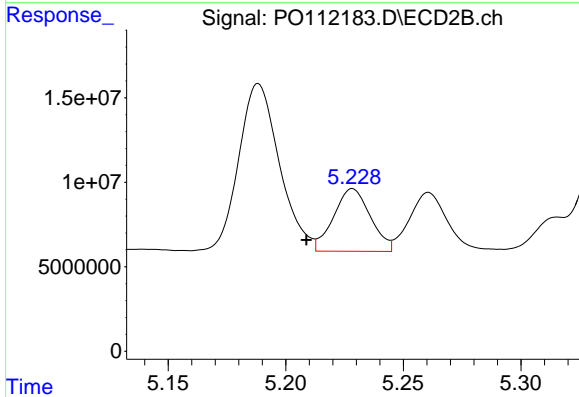
R.T.: 5.018 min
 Delta R.T.: 0.021 min
 Response: 99184519
 Conc: 722.77 ng/ml



#7 AR-1016-5

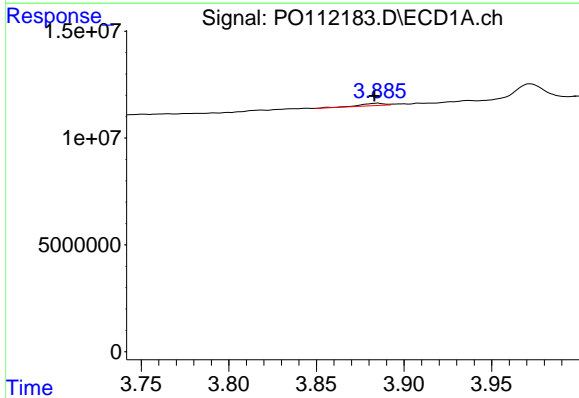
R.T.: 5.210 min
 Delta R.T.: -0.003 min
 Response: 190848079
 Conc: 697.39 ng/ml

Instrument :
 ECD_O
 ClientSampleId :
 AR1248CCC500



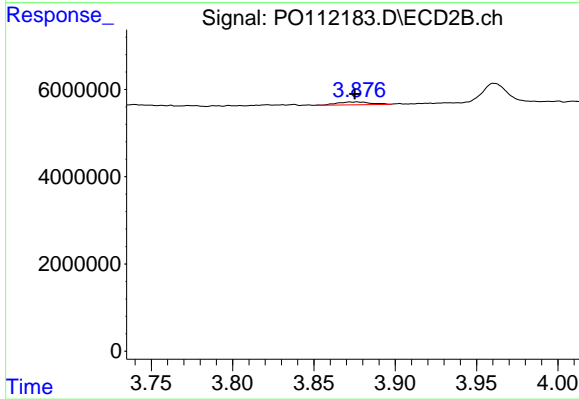
#7 AR-1016-5

R.T.: 5.228 min
 Delta R.T.: 0.020 min
 Response: 40471016
 Conc: 234.68 ng/ml



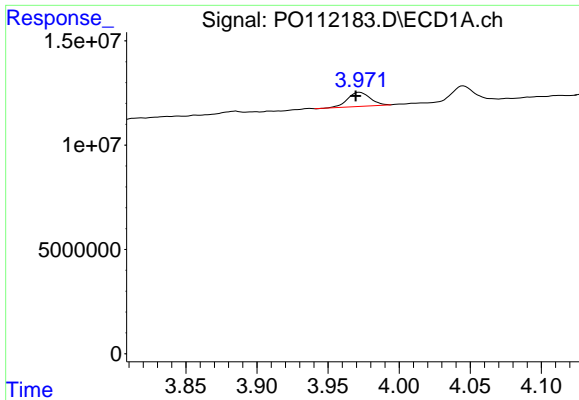
#8 AR-1221-1

R.T.: 3.885 min
 Delta R.T.: 0.002 min
 Response: 1072767
 Conc: 9.20 ng/ml



#8 AR-1221-1

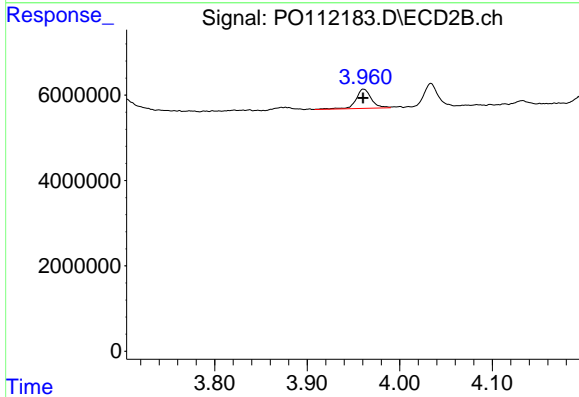
R.T.: 3.876 min
 Delta R.T.: 0.001 min
 Response: 939310
 Conc: 11.41 ng/ml



#9 AR-1221-2

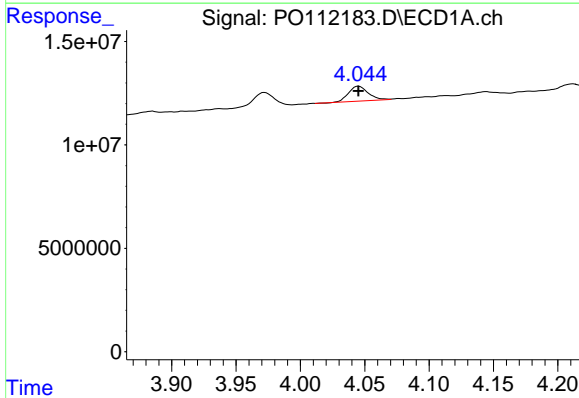
R.T.: 3.972 min
 Delta R.T.: 0.003 min
 Response: 7464208
 Conc: 94.67 ng/ml

Instrument :
 ECD_O
 ClientSampleId :
 AR1248CCC500



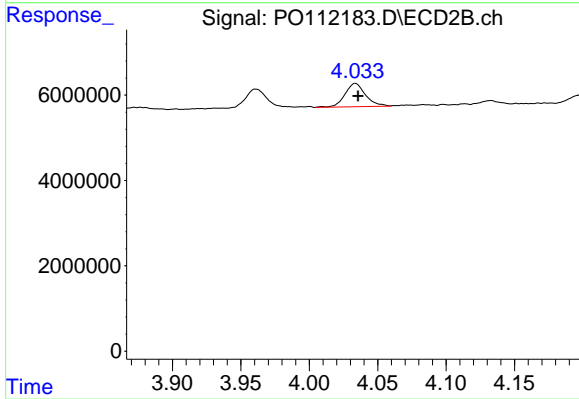
#9 AR-1221-2

R.T.: 3.961 min
 Delta R.T.: 0.000 min
 Response: 5199249
 Conc: 87.60 ng/ml



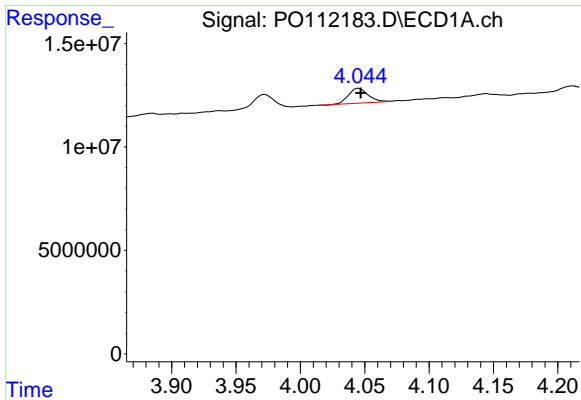
#10 AR-1221-3

R.T.: 4.045 min
 Delta R.T.: 0.000 min
 Response: 7618070
 Conc: 28.26 ng/ml



#10 AR-1221-3

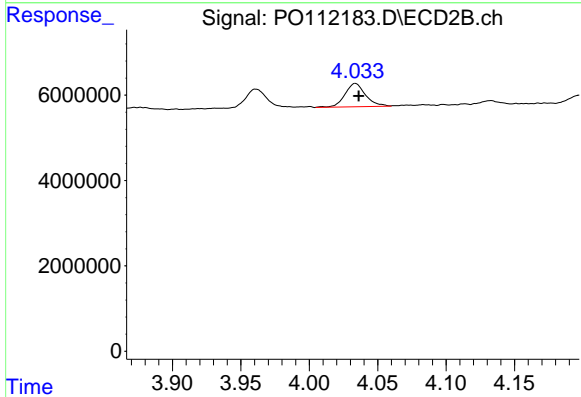
R.T.: 4.034 min
 Delta R.T.: -0.002 min
 Response: 5761117
 Conc: 30.52 ng/ml



#11 AR-1232-1

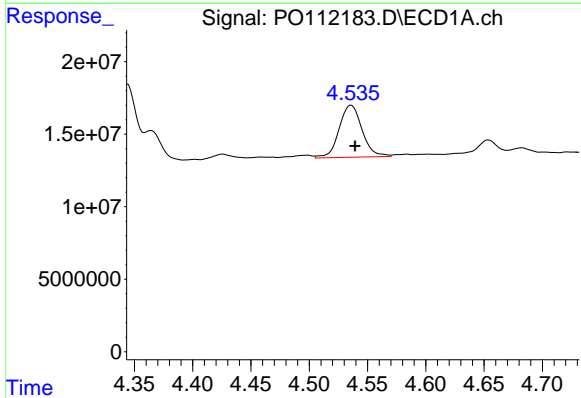
R.T.: 4.045 min
 Delta R.T.: -0.002 min
 Response: 7618070
 Conc: 35.49 ng/ml

Instrument :
 ECD_O
 ClientSampleId :
 AR1248CCC500



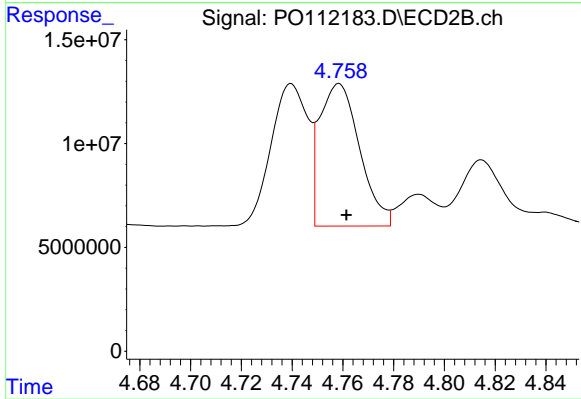
#11 AR-1232-1

R.T.: 4.034 min
 Delta R.T.: -0.002 min
 Response: 5761117
 Conc: 38.38 ng/ml



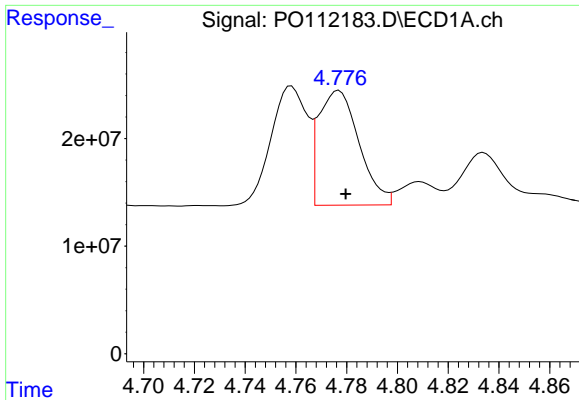
#12 AR-1232-2

R.T.: 4.536 min
 Delta R.T.: -0.003 min
 Response: 49254426
 Conc: 433.44 ng/ml



#12 AR-1232-2

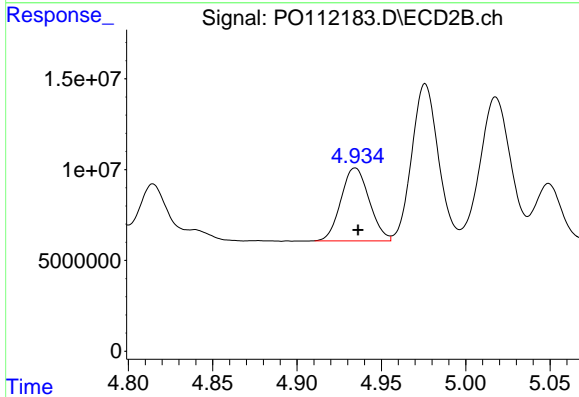
R.T.: 4.758 min
 Delta R.T.: -0.003 min
 Response: 75086771
 Conc: 490.49 ng/ml



#13 AR-1232-3

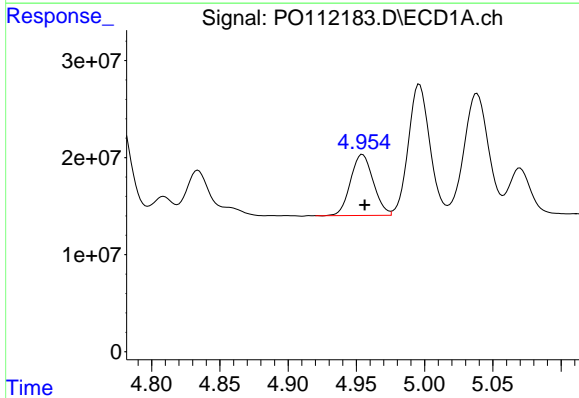
R.T.: 4.777 min
 Delta R.T.: -0.003 min
 Response: 117825491
 Conc: 514.50 ng/ml

Instrument :
 ECD_O
 ClientSampleId :
 AR1248CCC500



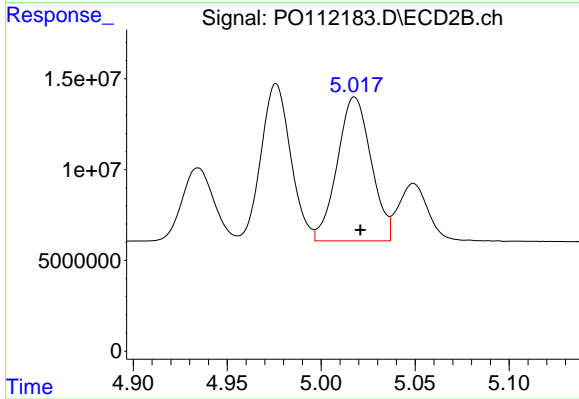
#13 AR-1232-3

R.T.: 4.934 min
 Delta R.T.: -0.002 min
 Response: 46867377
 Conc: 620.71 ng/ml



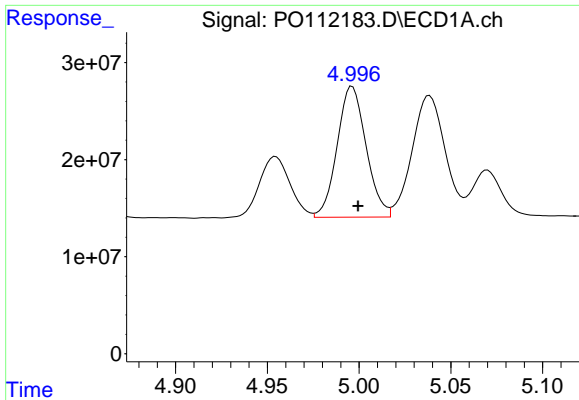
#14 AR-1232-4

R.T.: 4.955 min
 Delta R.T.: -0.002 min
 Response: 72953025
 Conc: 638.28 ng/ml



#14 AR-1232-4

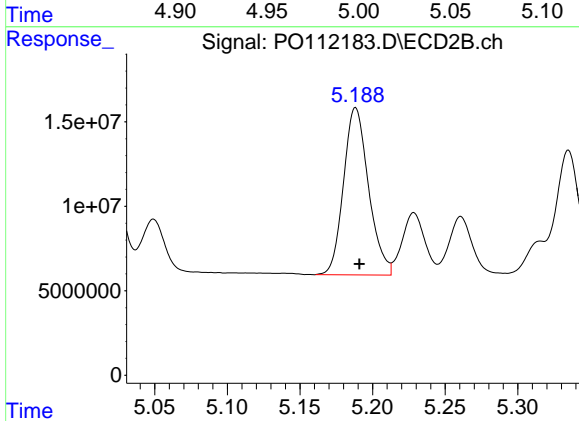
R.T.: 5.018 min
 Delta R.T.: -0.003 min
 Response: 99184519
 Conc: 1503.06 ng/ml



#15 AR-1232-5

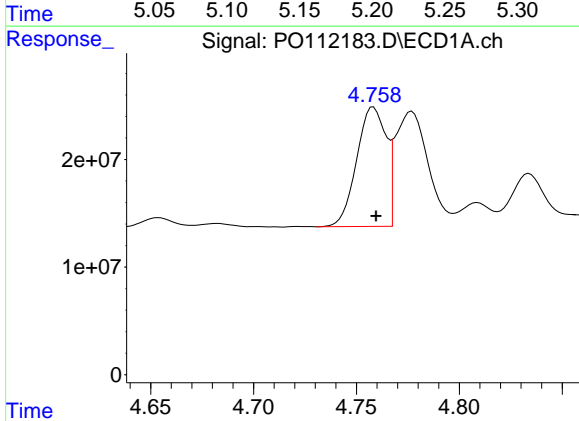
R.T.: 4.996 min
 Delta R.T.: -0.003 min
 Response: 148068732
 Conc: 2017.28 ng/ml

Instrument :
 ECD_O
 ClientSampleId :
 AR1248CCC500



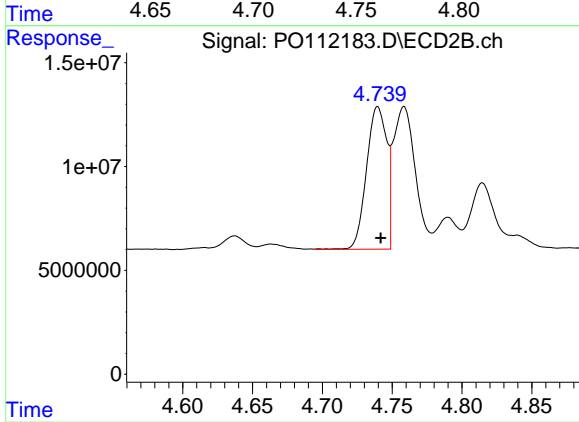
#15 AR-1232-5

R.T.: 5.188 min
 Delta R.T.: -0.003 min
 Response: 118784058
 Conc: 1599.57 ng/ml



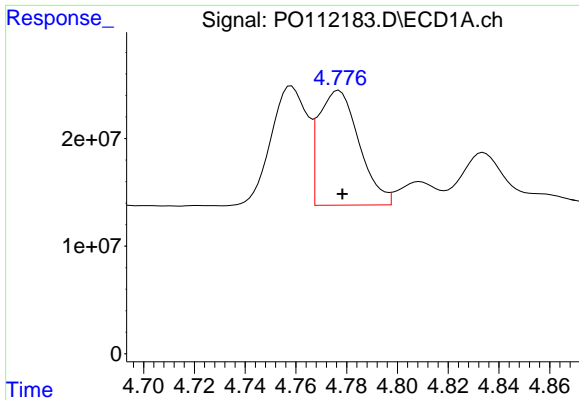
#16 AR-1242-1

R.T.: 4.758 min
 Delta R.T.: -0.001 min
 Response: 110185051
 Conc: 380.43 ng/ml



#16 AR-1242-1

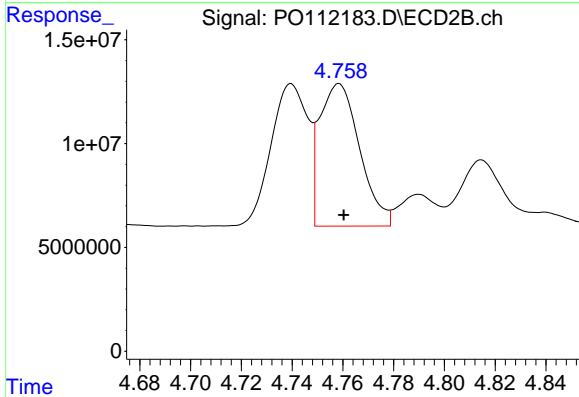
R.T.: 4.740 min
 Delta R.T.: -0.002 min
 Response: 69329192
 Conc: 357.63 ng/ml



#17 AR-1242-2

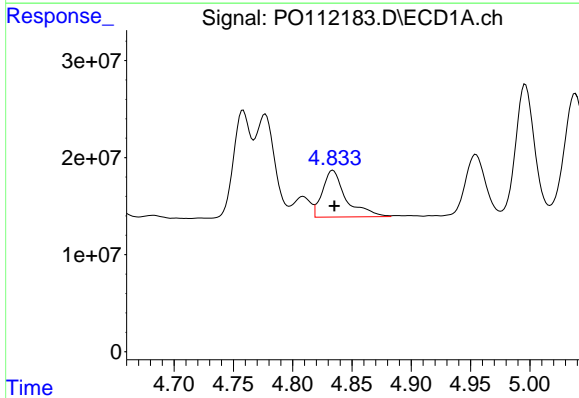
R.T.: 4.777 min
 Delta R.T.: -0.001 min
 Response: 117825491
 Conc: 276.64 ng/ml

Instrument :
 ECD_O
 ClientSampleId :
 AR1248CCC500



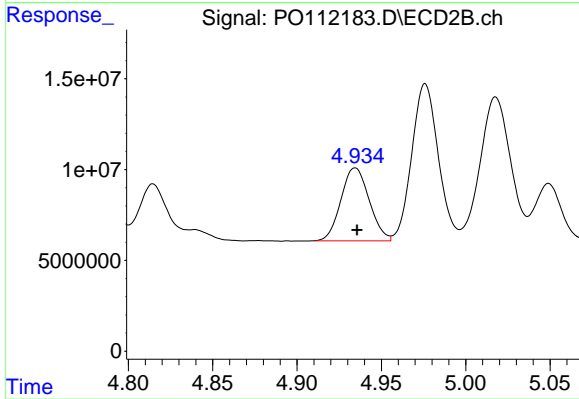
#17 AR-1242-2

R.T.: 4.758 min
 Delta R.T.: -0.002 min
 Response: 75086771
 Conc: 264.99 ng/ml



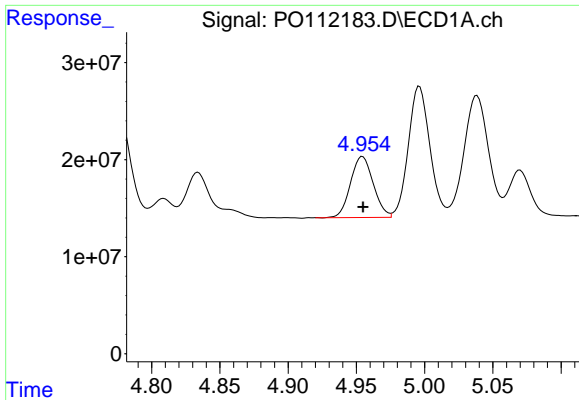
#18 AR-1242-3

R.T.: 4.834 min
 Delta R.T.: -0.001 min
 Response: 66325778
 Conc: 242.34 ng/ml



#18 AR-1242-3

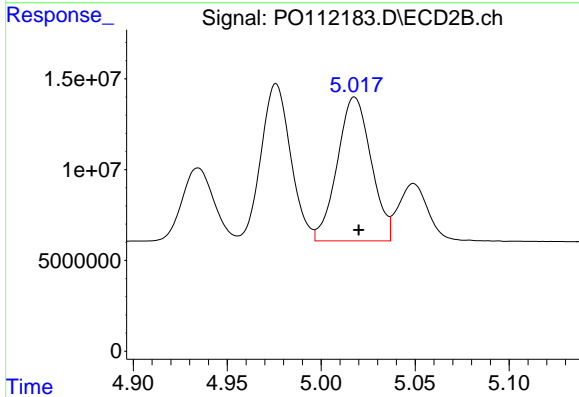
R.T.: 4.934 min
 Delta R.T.: -0.001 min
 Response: 46867377
 Conc: 321.72 ng/ml



#19 AR-1242-4

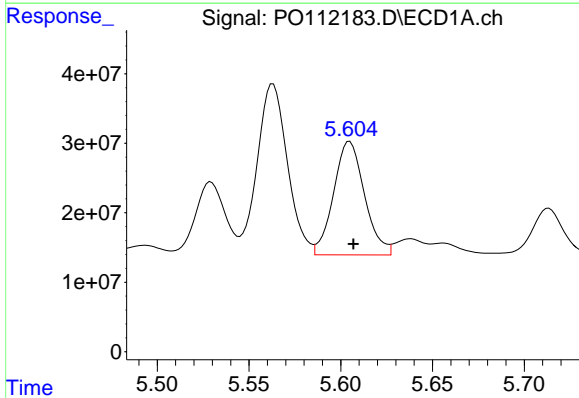
R.T.: 4.955 min
 Delta R.T.: 0.000 min
 Response: 72953025
 Conc: 323.78 ng/ml

Instrument :
 ECD_O
 ClientSampleId :
 AR1248CCC500



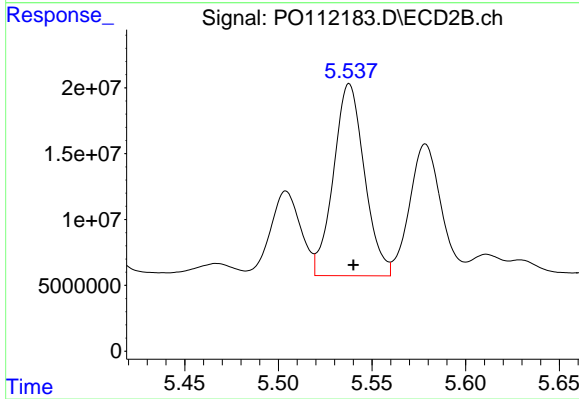
#19 AR-1242-4

R.T.: 5.018 min
 Delta R.T.: -0.002 min
 Response: 99184519
 Conc: 699.27 ng/ml



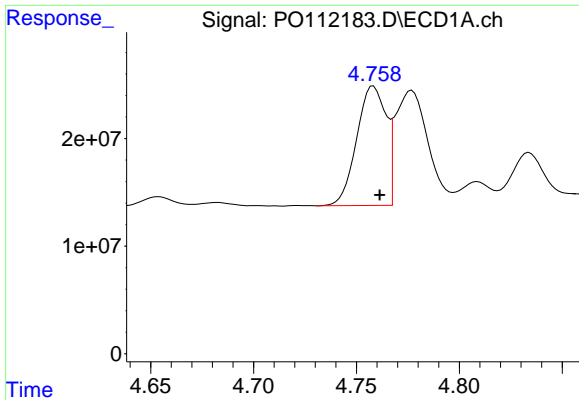
#20 AR-1242-5

R.T.: 5.605 min
 Delta R.T.: -0.002 min
 Response: 191754351
 Conc: 905.91 ng/ml



#20 AR-1242-5

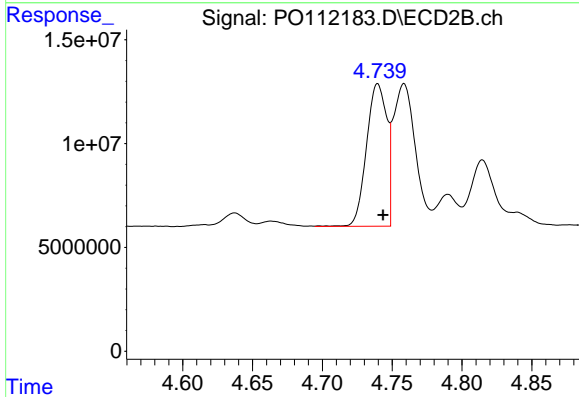
R.T.: 5.538 min
 Delta R.T.: -0.002 min
 Response: 167538160
 Conc: 921.89 ng/ml



#21 AR-1248-1

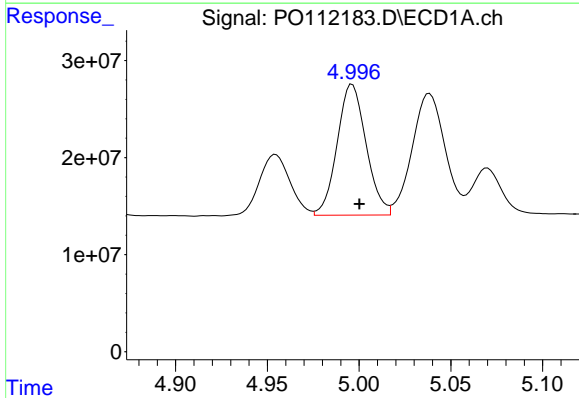
R.T.: 4.758 min
 Delta R.T.: -0.003 min
 Response: 110185051
 Conc: 485.61 ng/ml

Instrument :
 ECD_O
 ClientSampleId :
 AR1248CCC500



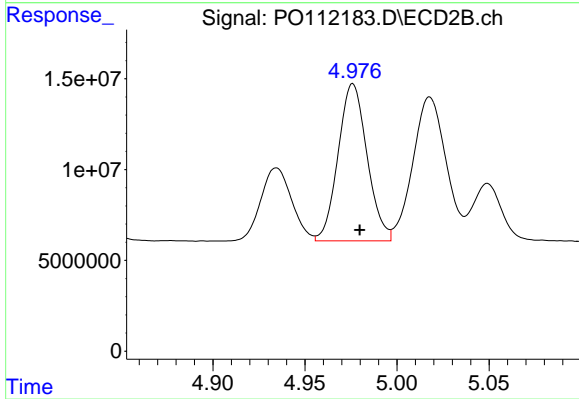
#21 AR-1248-1

R.T.: 4.740 min
 Delta R.T.: -0.004 min
 Response: 69329192
 Conc: 449.12 ng/ml



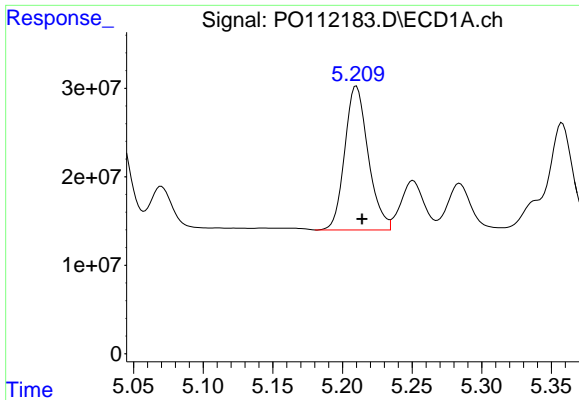
#22 AR-1248-2

R.T.: 4.996 min
 Delta R.T.: -0.004 min
 Response: 148068732
 Conc: 480.24 ng/ml



#22 AR-1248-2

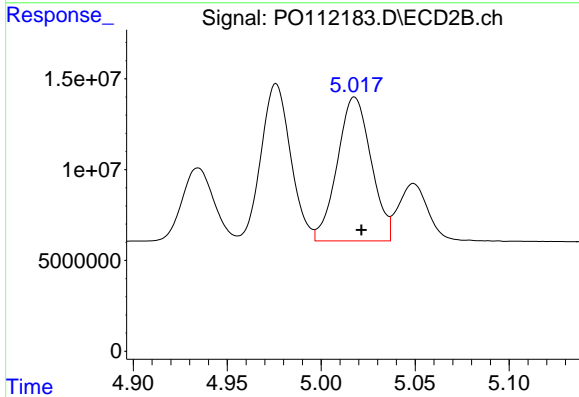
R.T.: 4.976 min
 Delta R.T.: -0.004 min
 Response: 94761481
 Conc: 460.53 ng/ml



#23 AR-1248-3

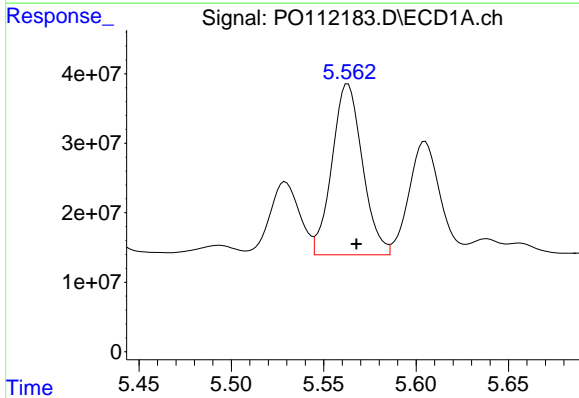
R.T.: 5.210 min
 Delta R.T.: -0.004 min
 Response: 190848079
 Conc: 468.55 ng/ml

Instrument :
 ECD_O
 ClientSampleId :
 AR1248CCC500



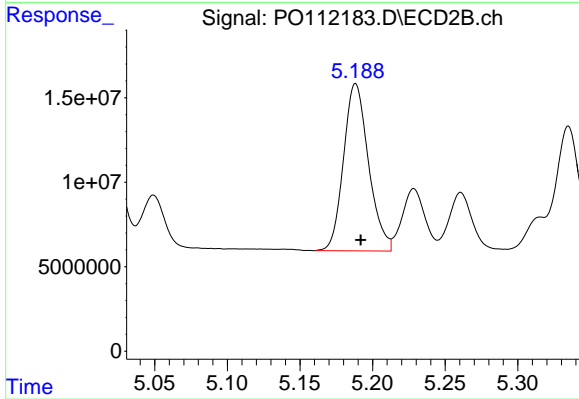
#23 AR-1248-3

R.T.: 5.018 min
 Delta R.T.: -0.004 min
 Response: 99184519
 Conc: 461.76 ng/ml



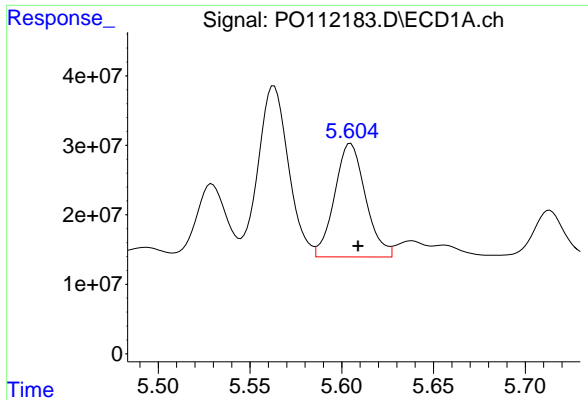
#24 AR-1248-4

R.T.: 5.563 min
 Delta R.T.: -0.005 min
 Response: 282643175
 Conc: 489.72 ng/ml



#24 AR-1248-4

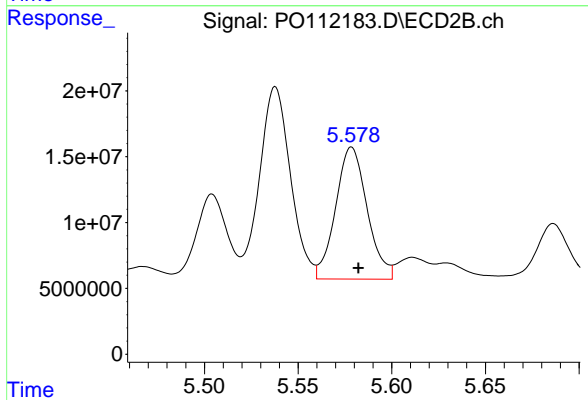
R.T.: 5.188 min
 Delta R.T.: -0.004 min
 Response: 118784058
 Conc: 459.11 ng/ml



#25 AR-1248-5

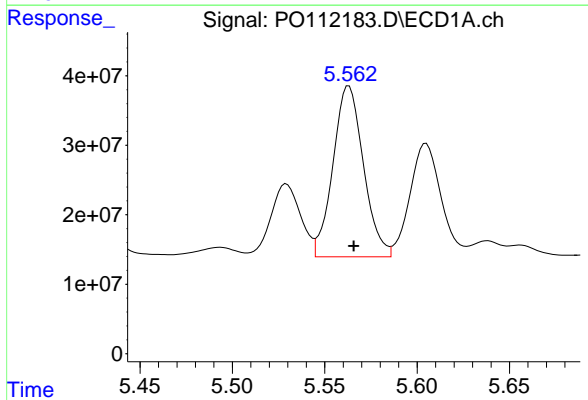
R.T.: 5.605 min
 Delta R.T.: -0.004 min
 Response: 191754351
 Conc: 491.29 ng/ml

Instrument :
 ECD_O
 ClientSampleId :
 AR1248CCC500



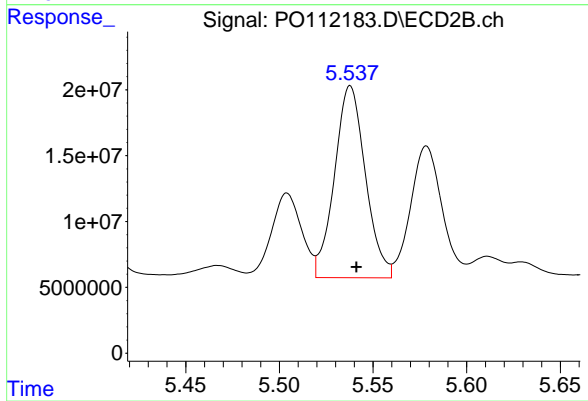
#25 AR-1248-5

R.T.: 5.579 min
 Delta R.T.: -0.004 min
 Response: 117849278
 Conc: 470.36 ng/ml



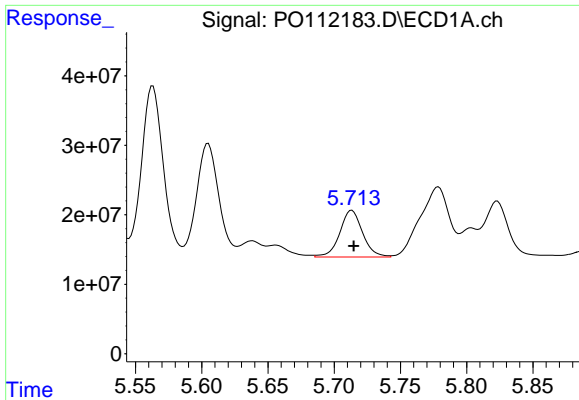
#26 AR-1254-1

R.T.: 5.563 min
 Delta R.T.: -0.003 min
 Response: 282643175
 Conc: 459.50 ng/ml



#26 AR-1254-1

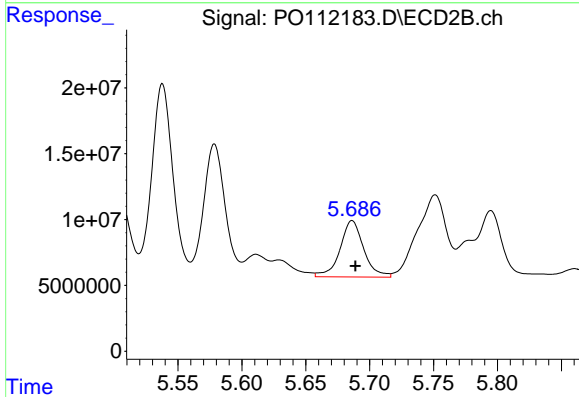
R.T.: 5.538 min
 Delta R.T.: -0.003 min
 Response: 167538160
 Conc: 439.54 ng/ml



#27 AR-1254-2

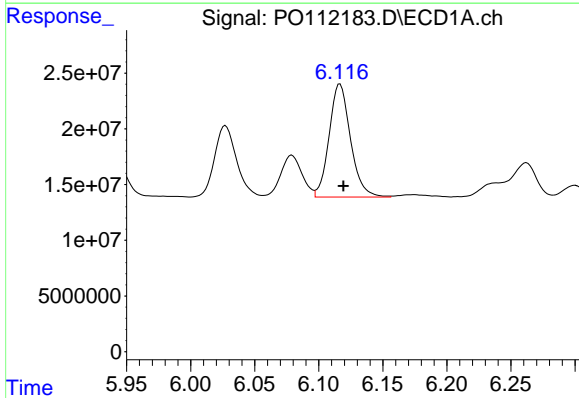
R.T.: 5.713 min
 Delta R.T.: -0.002 min
 Response: 80737218
 Conc: 150.72 ng/ml

Instrument :
 ECD_O
 ClientSampleId :
 AR1248CCC500



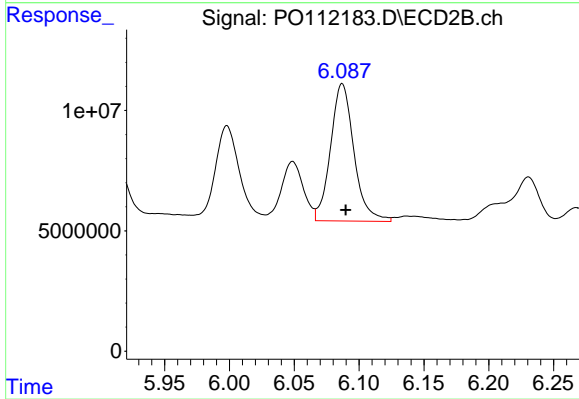
#27 AR-1254-2

R.T.: 5.686 min
 Delta R.T.: -0.003 min
 Response: 55154945
 Conc: 166.22 ng/ml



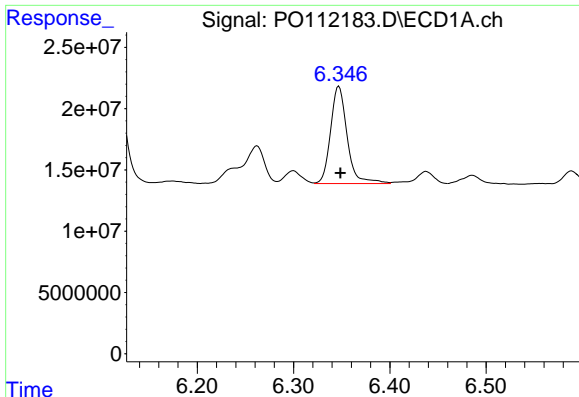
#28 AR-1254-3

R.T.: 6.117 min
 Delta R.T.: -0.003 min
 Response: 117607813
 Conc: 140.08 ng/ml



#28 AR-1254-3

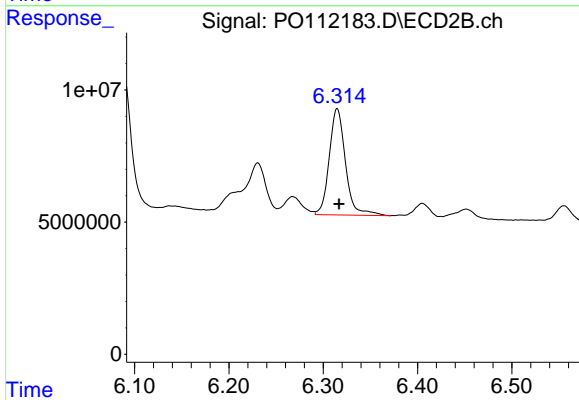
R.T.: 6.087 min
 Delta R.T.: -0.003 min
 Response: 71844186
 Conc: 149.04 ng/ml



#29 AR-1254-4

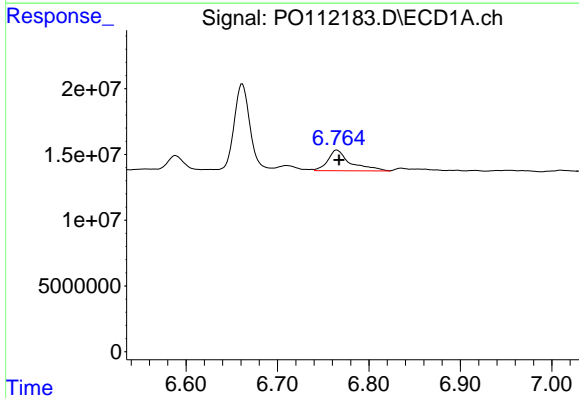
R.T.: 6.347 min
 Delta R.T.: -0.001 min
 Response: 95180877
 Conc: 197.87 ng/ml

Instrument :
 ECD_O
 ClientSampleId :
 AR1248CCC500



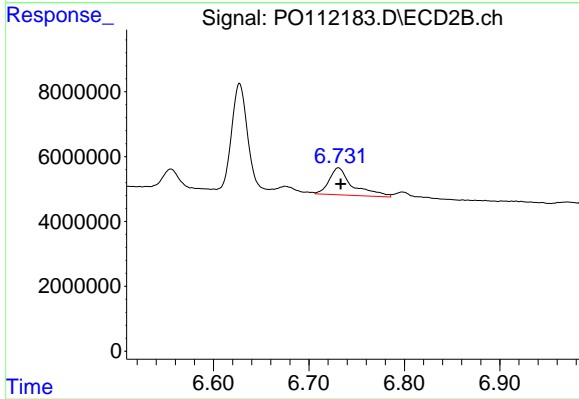
#29 AR-1254-4

R.T.: 6.315 min
 Delta R.T.: -0.002 min
 Response: 48193415
 Conc: 184.87 ng/ml



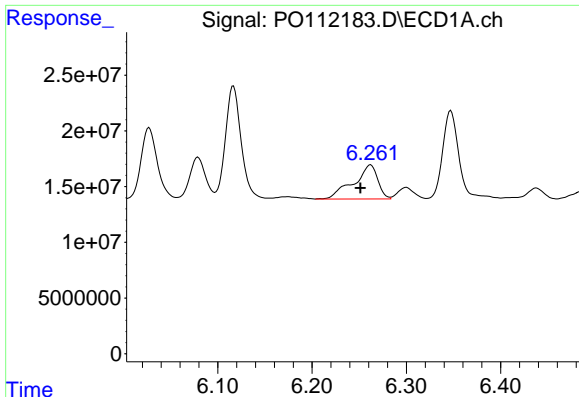
#30 AR-1254-5

R.T.: 6.765 min
 Delta R.T.: -0.003 min
 Response: 27137597
 Conc: 35.06 ng/ml



#30 AR-1254-5

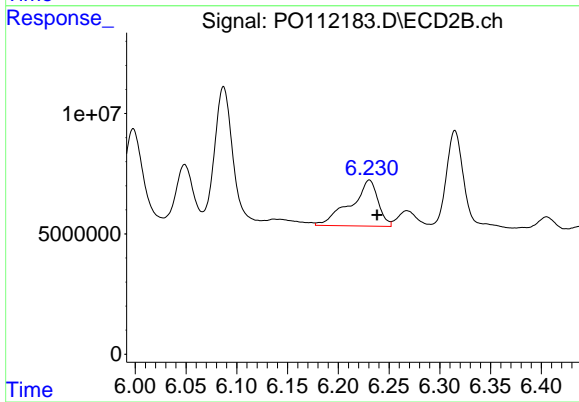
R.T.: 6.731 min
 Delta R.T.: -0.002 min
 Response: 14136148
 Conc: 39.67 ng/ml



#31 AR-1260-1

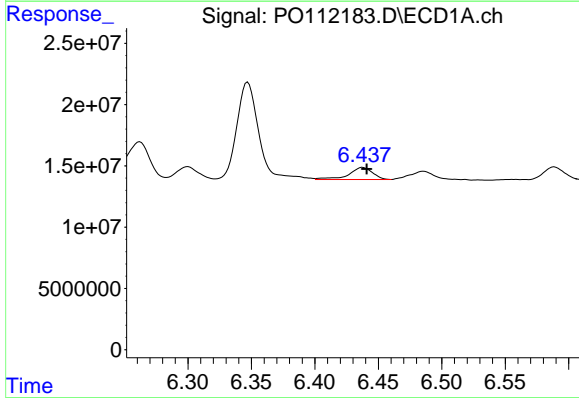
R.T.: 6.262 min
 Delta R.T.: 0.011 min
 Response: 54626431
 Conc: 108.98 ng/ml

Instrument :
 ECD_O
 ClientSampleId :
 AR1248CCC500



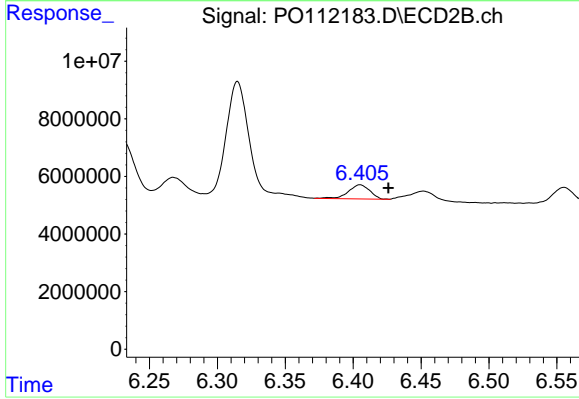
#31 AR-1260-1

R.T.: 6.231 min
 Delta R.T.: -0.008 min
 Response: 35981021
 Conc: 128.25 ng/ml



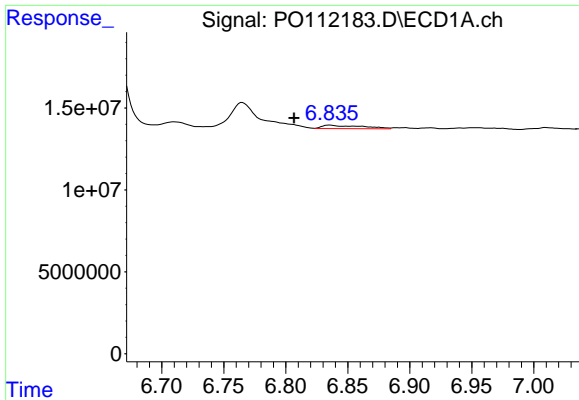
#32 AR-1260-2

R.T.: 6.438 min
 Delta R.T.: -0.003 min
 Response: 12746665
 Conc: 17.27 ng/ml



#32 AR-1260-2

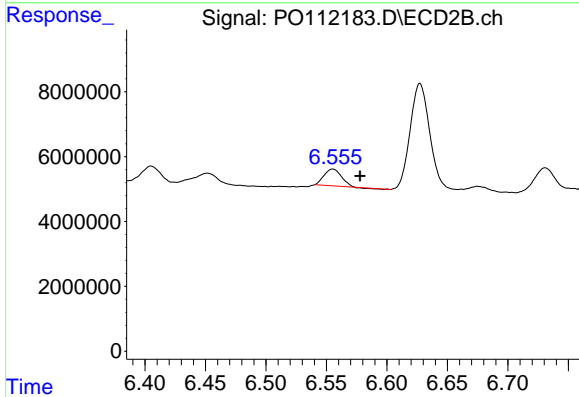
R.T.: 6.405 min
 Delta R.T.: -0.021 min
 Response: 5332283
 Conc: 15.68 ng/ml



#33 AR-1260-3

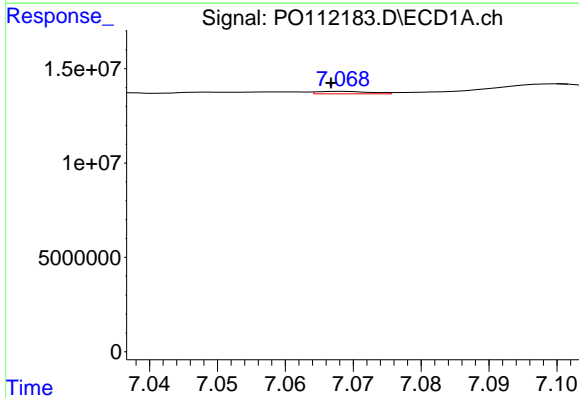
R.T.: 6.836 min
 Delta R.T.: 0.029 min
 Response: 4814430
 Conc: 7.34 ng/ml

Instrument :
 ECD_O
 ClientSampleId :
 AR1248CCC500



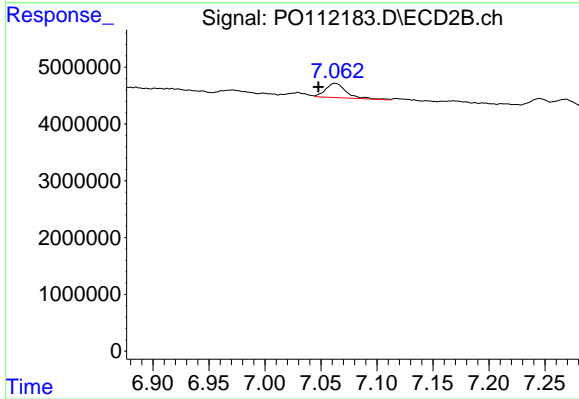
#33 AR-1260-3

R.T.: 6.555 min
 Delta R.T.: -0.023 min
 Response: 5076288
 Conc: 18.42 ng/ml



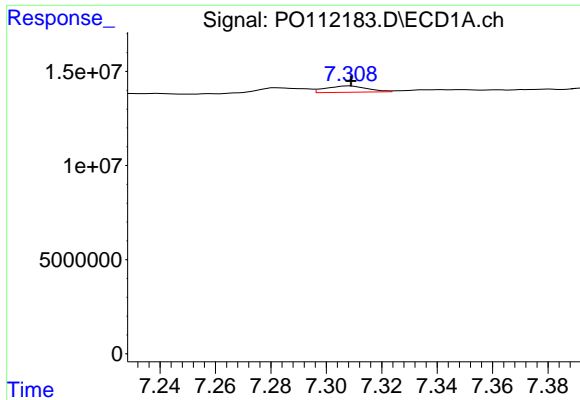
#34 AR-1260-4

R.T.: 7.069 min
 Delta R.T.: 0.002 min
 Response: 707638
 Conc: 1.63 ng/ml



#34 AR-1260-4

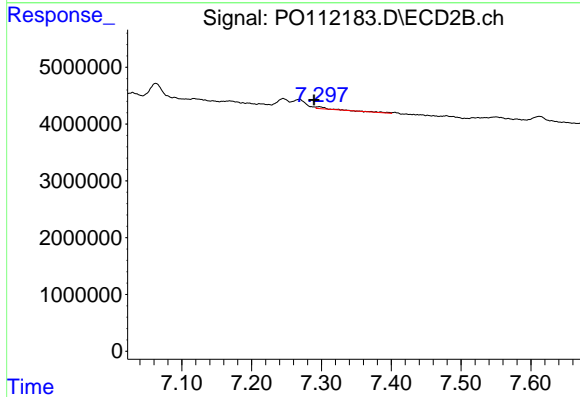
R.T.: 7.063 min
 Delta R.T.: 0.015 min
 Response: 3169224
 Conc: 15.80 ng/ml



#35 AR-1260-5

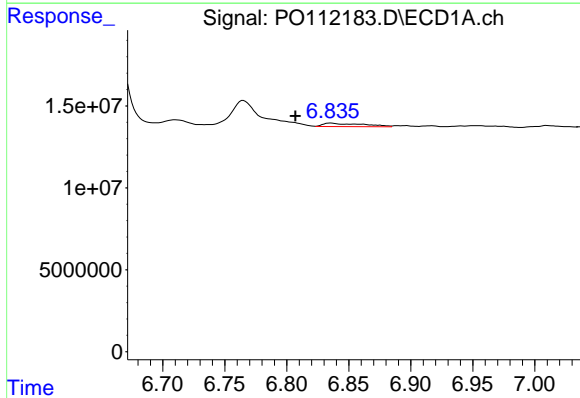
R.T.: 7.308 min
 Delta R.T.: 0.000 min
 Response: 3534722
 Conc: 2.80 ng/ml

Instrument :
 ECD_O
 ClientSampleId :
 AR1248CCC500



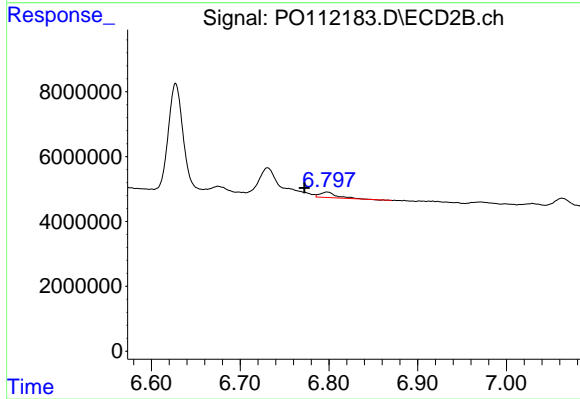
#35 AR-1260-5

R.T.: 7.297 min
 Delta R.T.: 0.007 min
 Response: 477270
 Conc: 1.07 ng/ml



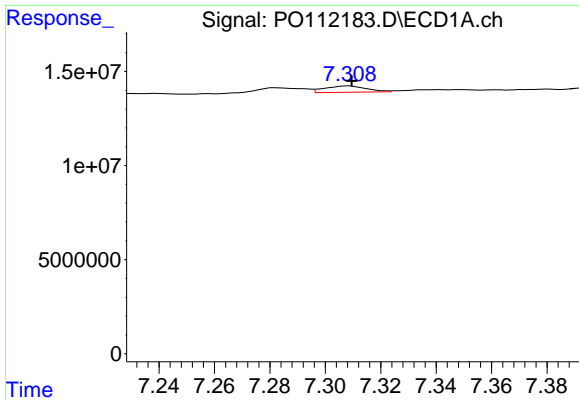
#36 AR-1262-1

R.T.: 6.836 min
 Delta R.T.: 0.029 min
 Response: 4814430
 Conc: 4.71 ng/ml



#36 AR-1262-1

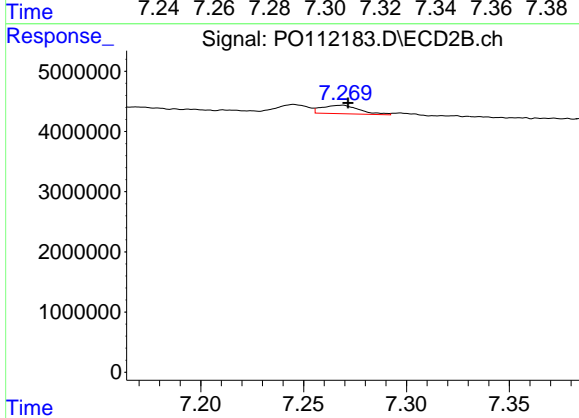
R.T.: 6.798 min
 Delta R.T.: 0.026 min
 Response: 2058632
 Conc: 5.05 ng/ml



#37 AR-1262-2

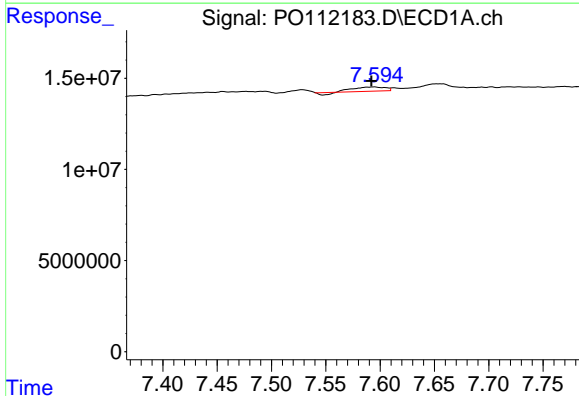
R.T.: 7.308 min
 Delta R.T.: -0.001 min
 Response: 3534722
 Conc: 2.16 ng/ml

Instrument :
 ECD_O
 ClientSampleId :
 AR1248CCC500



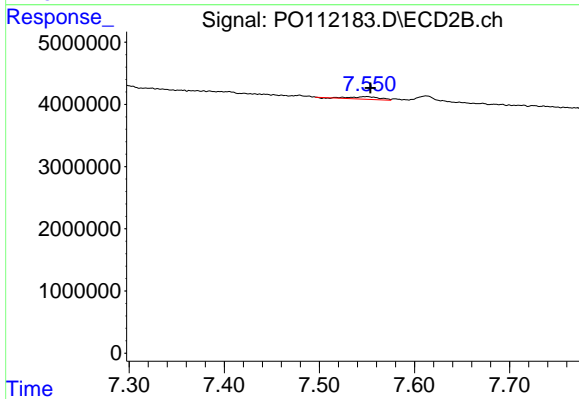
#37 AR-1262-2

R.T.: 7.269 min
 Delta R.T.: -0.003 min
 Response: 1785864
 Conc: 3.48 ng/ml



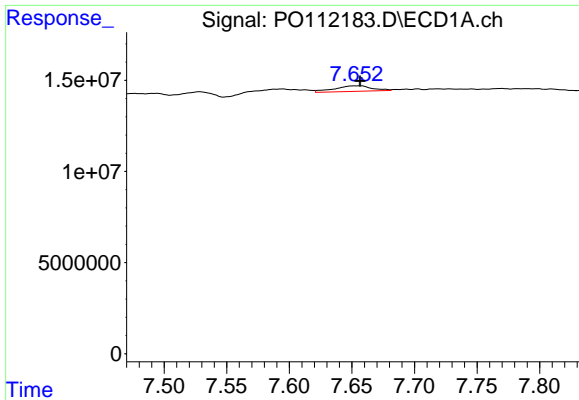
#38 AR-1262-3

R.T.: 7.595 min
 Delta R.T.: 0.002 min
 Response: 4294943
 Conc: 6.69 ng/ml



#38 AR-1262-3

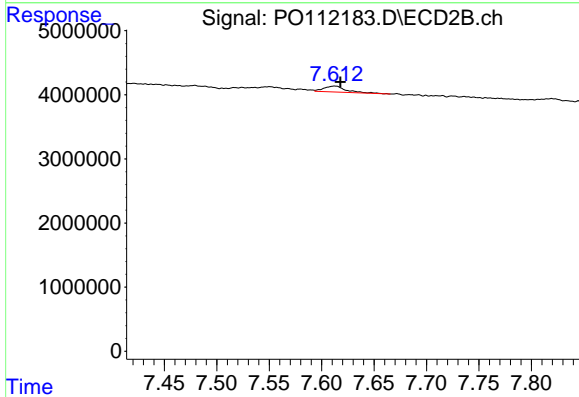
R.T.: 7.550 min
 Delta R.T.: -0.004 min
 Response: 877557
 Conc: 4.89 ng/ml



#39 AR-1262-4

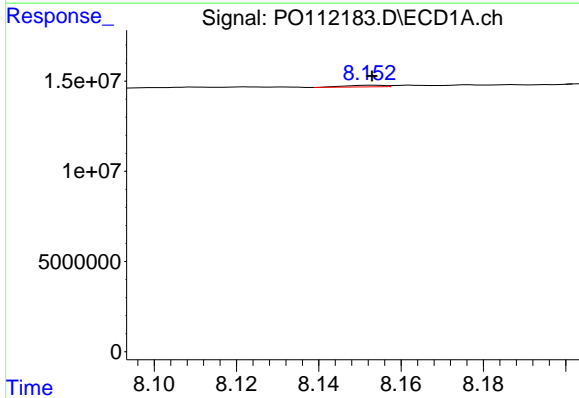
R.T.: 7.652 min
 Delta R.T.: -0.004 min
 Response: 6358454
 Conc: 5.93 ng/ml

Instrument :
 ECD_O
 ClientSampleId :
 AR1248CCC500



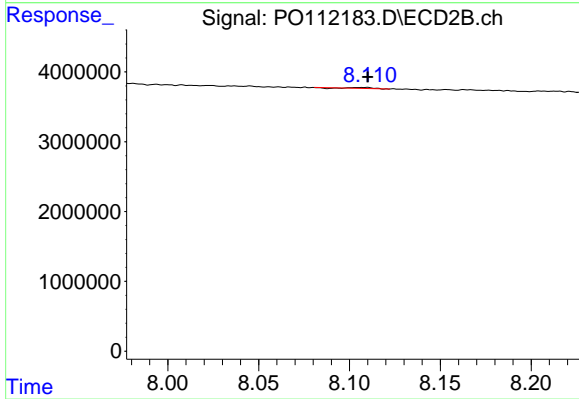
#39 AR-1262-4

R.T.: 7.612 min
 Delta R.T.: -0.006 min
 Response: 1327871
 Conc: 4.56 ng/ml



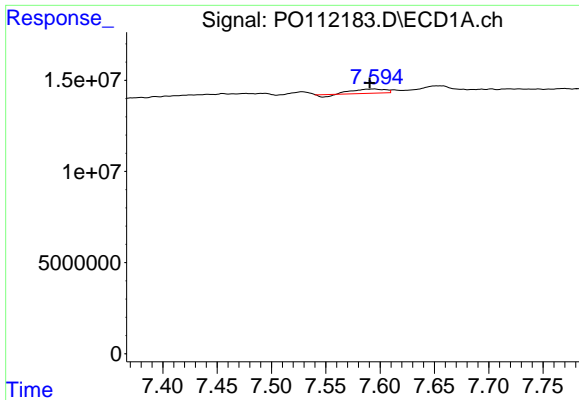
#40 AR-1262-5

R.T.: 8.153 min
 Delta R.T.: 0.000 min
 Response: 599478
 Conc: 1.34 ng/ml



#40 AR-1262-5

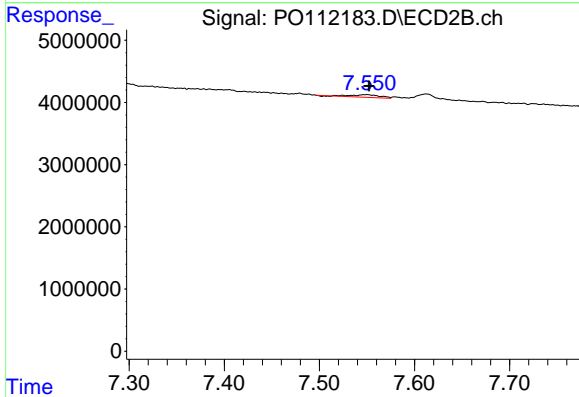
R.T.: 8.109 min
 Delta R.T.: -0.001 min
 Response: 78204
 Conc: 0.74 ng/ml



#41 AR-1268-1

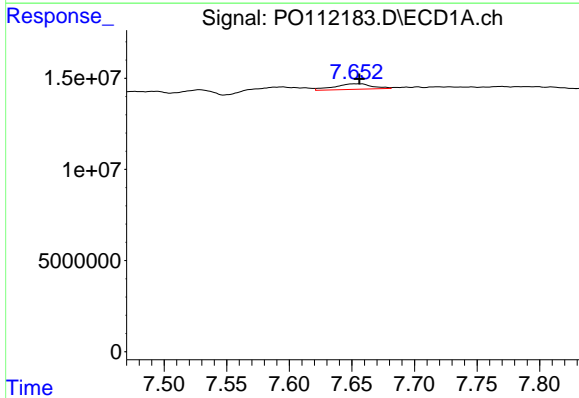
R.T.: 7.595 min
 Delta R.T.: 0.004 min
 Response: 4294943
 Conc: 2.34 ng/ml

Instrument :
 ECD_O
 ClientSampleId :
 AR1248CCC500



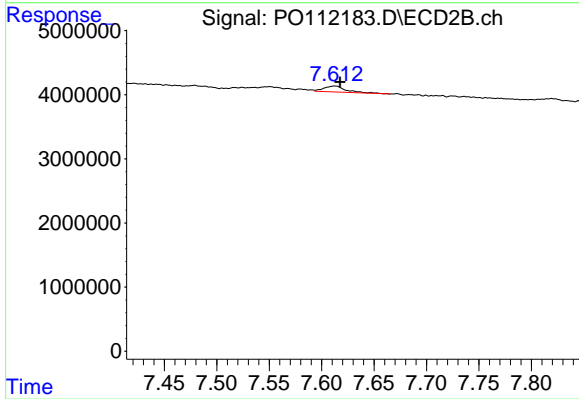
#41 AR-1268-1

R.T.: 7.550 min
 Delta R.T.: -0.002 min
 Response: 877557
 Conc: 1.79 ng/ml



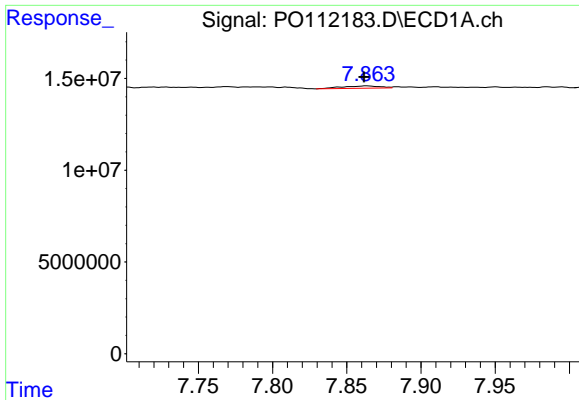
#42 AR-1268-2

R.T.: 7.652 min
 Delta R.T.: -0.004 min
 Response: 6358454
 Conc: 4.08 ng/ml



#42 AR-1268-2

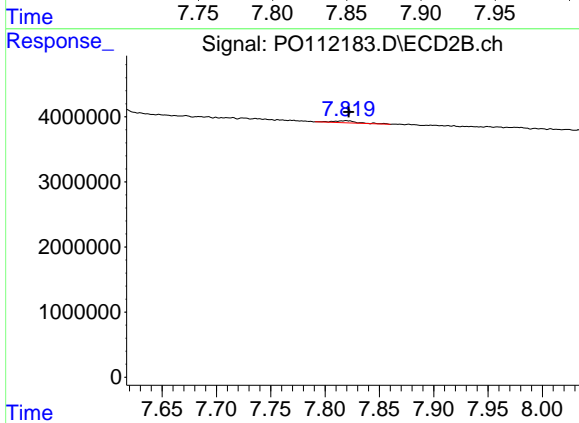
R.T.: 7.612 min
 Delta R.T.: -0.005 min
 Response: 1327871
 Conc: 3.18 ng/ml



#43 AR-1268-3

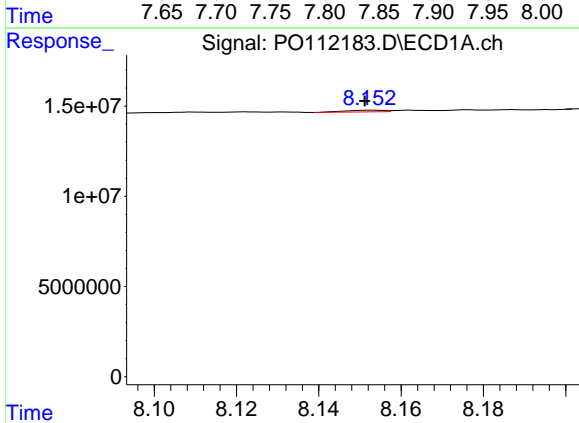
R.T.: 7.864 min
 Delta R.T.: 0.002 min
 Response: 2227109
 Conc: 1.71 ng/ml

Instrument :
 ECD_O
 ClientSampleId :
 AR1248CCC500



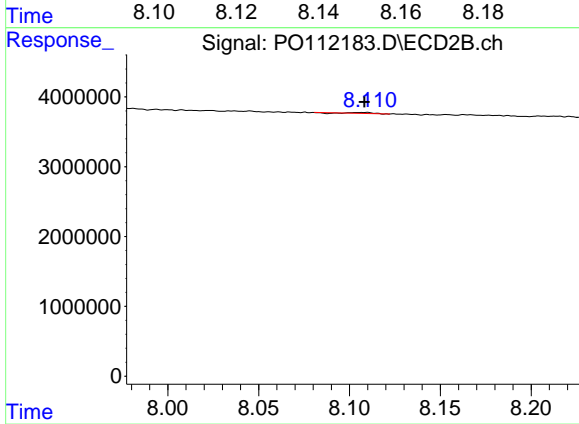
#43 AR-1268-3

R.T.: 7.820 min
 Delta R.T.: -0.002 min
 Response: 466440
 Conc: 1.47 ng/ml



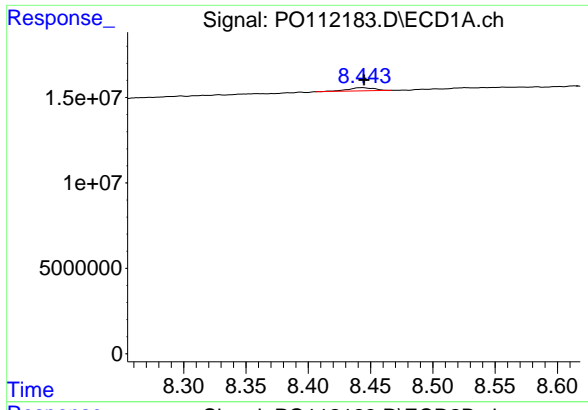
#44 AR-1268-4

R.T.: 8.153 min
 Delta R.T.: 0.002 min
 Response: 599478
 Conc: 1.25 ng/ml



#44 AR-1268-4

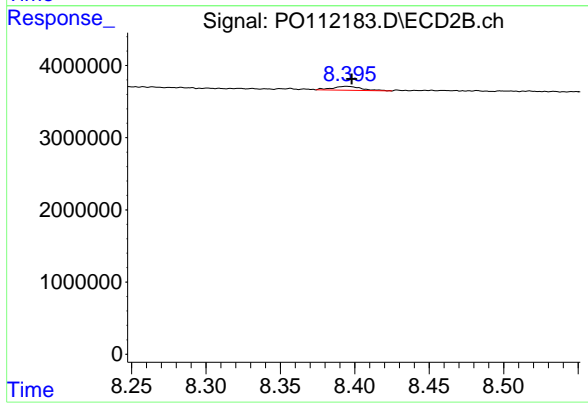
R.T.: 8.109 min
 Delta R.T.: 0.000 min
 Response: 78204
 Conc: 0.70 ng/ml



#45 AR-1268-5

R.T.: 8.443 min
Delta R.T.: -0.001 min
Response: 2718649
Conc: 0.83 ng/ml

Instrument :
ECD_O
ClientSampleId :
AR1248CCC500



#45 AR-1268-5

R.T.: 8.395 min
Delta R.T.: -0.003 min
Response: 751136
Conc: 1.03 ng/ml