

Data Path : Z:\pestpcbsrv\HPCHEM1\ECD_0\Data\P0071025\
 Data File : PO112184.D
 Signal(s) : Signal #1: ECD1A.ch Signal #2: ECD2B.ch
 Acq On : 10 Jul 2025 10:50
 Operator : YP/AJ
 Sample : AR1254CCC500
 Misc :
 ALS Vial : 6 Sample Multiplier: 1

Instrument :
 ECD_0
 ClientSampleId :
 AR1254CCC500

Integration File signal 1: autoint1.e
 Integration File signal 2: autoint2.e
 Quant Time: Jul 10 11:19:25 2025
 Quant Method : Z:\pestpcbsrv\HPCHEM1\ECD_0\methods\P0070825.M
 Quant Title : GC EXTRACTABLES
 QLast Update : Wed Jul 09 10:50:50 2025
 Response via : Initial Calibration
 Integrator: ChemStation

Volume Inj. : 2 µl
 Signal #1 Phase : ZB-MR2 Signal #2 Phase: ZB-MR2
 Signal #1 Info : 30Mx0.32mmx 0.50µ Signal #2 Info : 30M x 0.32mm x 0.25µm

Compound	RT#1	RT#2	Resp#1	Resp#2	ng/ml	ng/ml
System Monitoring Compounds						
1) SA Tetrachlo...	3.673	3.666	508.6E6	307.1E6	51.403	48.203
2) SA Decachlor...	8.702	8.648	373.6E6	88890062	54.640	51.577
Target Compounds						
3) L1 AR-1016-1	4.761	4.761	4320325	3220943	12.702	14.454
4) L1 AR-1016-2	4.778	4.792	3554769	1873722	7.148	5.694
5) L1 AR-1016-3	4.837	4.937	2885526	1513682	8.914	8.911
6) L1 AR-1016-4	4.956	4.978	3175723	71482392	12.367	520.904 #
7) L1 AR-1016-5	5.212	5.190	71494394	45257056	261.251	262.435
8) L2 AR-1221-1	3.884	3.876	758275	163739	6.502	1.990 #
9) L2 AR-1221-2	3.974	3.964	6213670	4251343	78.813	71.627
10) L2 AR-1221-3	4.048	4.035	1745927	750983	6.476	3.978 #
11) L3 AR-1232-1	4.048	4.035	1745927	750983	8.133	5.003 #
12) L3 AR-1232-2	4.539	4.761	3457230	3220943	30.423	21.040 #
13) L3 AR-1232-3	4.778	4.937	3554769	1513682	15.522	20.047 #
14) L3 AR-1232-4	4.956	5.018	3175723	21315690	27.785	323.023 #
15) L3 AR-1232-5	4.998	5.190	110.7E6	45257056	1508.641	609.441 #
16) L4 AR-1242-1	4.761	4.742	4320325	4063384	14.916	20.961 #
17) L4 AR-1242-2	4.778	4.761	3554769	3220943	8.346	11.367 #
18) L4 AR-1242-3	4.837	4.937	2885526	1513682	10.543	10.391
19) L4 AR-1242-4	4.956	5.018	3175723	21315690	14.094	150.279 #
20) L4 AR-1242-5	5.607	5.540	33712178	175.7E6	159.267	966.646 #
21) L5 AR-1248-1	4.761	4.742	4320325	4063384	19.041	26.323 #
22) L5 AR-1248-2	4.998	4.978	110.7E6	71482392	359.149	347.394
23) L5 AR-1248-3	5.212	5.018	71494394	21315690	175.524	99.236 #
24) L5 AR-1248-4	5.566	5.190	298.2E6	45257056	516.702	174.922 #
25) L5 AR-1248-5	5.607	5.581	33712178	23081867	86.374	92.125
26) L6 AR-1254-1	5.566	5.540	298.2E6	175.7E6	484.810	460.879
27) L6 AR-1254-2	5.715	5.688	260.5E6	152.4E6	486.350	459.251
28) L6 AR-1254-3	6.119	6.090	402.6E6	221.5E6	479.478	459.495
29) L6 AR-1254-4	6.349	6.317	285.7E6	133.2E6	594.037	511.124
30) L6 AR-1254-5	6.768	6.733	371.3E6	169.4E6	479.800	475.441
31) L7 AR-1260-1	6.251	6.220	184.1E6	102.2E6	367.329	364.309
32) L7 AR-1260-2	6.440	6.408	183.9E6	83958138	249.156	246.938
33) L7 AR-1260-3	6.837	6.558	24079671	70094556	36.736	254.347 #
34) L7 AR-1260-4	7.066	7.065	16505451	35465351	37.922	176.757 #
35) L7 AR-1260-5	7.309	7.300	44318015	5317358	35.102	11.876 #
36) L8 AR-1262-1	6.837	6.803	24079671	14669716	23.569	36.015 #
37) L8 AR-1262-2	7.309	7.270	44318015	16826463	27.034	32.829
38) L8 AR-1262-3	7.593	7.553	3261955	1012448	5.081	5.640
39) L8 AR-1262-4	7.653	7.612	39106950	12030938	36.500	41.355
40) L8 AR-1262-5	8.160	8.108	3129927	352443	6.984	3.332 #
41) L9 AR-1268-1	7.593	7.553	3261955	1012448	1.775	2.060

Data Path : Z:\pestpcbsrv\HPCHEM1\ECD_0\Data\P0071025\
 Data File : P0112184.D
 Signal(s) : Signal #1: ECD1A.ch Signal #2: ECD2B.ch
 Acq On : 10 Jul 2025 10:50
 Operator : YP/AJ
 Sample : AR1254CCC500
 Misc :
 ALS Vial : 6 Sample Multiplier: 1

Instrument :
 ECD_0
ClientSampleId :
 AR1254CCC500

Integration File signal 1: autoint1.e
 Integration File signal 2: autoint2.e
 Quant Time: Jul 10 11:19:25 2025
 Quant Method : Z:\pestpcbsrv\HPCHEM1\ECD_0\methods\P0070825.M
 Quant Title : GC EXTRACTABLES
 QLast Update : Wed Jul 09 10:50:50 2025
 Response via : Initial Calibration
 Integrator: ChemStation

Volume Inj. : 2 µl
 Signal #1 Phase : ZB-MR1 Signal #2 Phase: ZB-MR2
 Signal #1 Info : 30Mx0.32mmx 0.50µ Signal #2 Info : 30M x 0.32mm x 0.25µm

	Compound	RT#1	RT#2	Resp#1	Resp#2	ng/ml	ng/ml
42)	L9 AR-1268-2	7.653	7.612	39106950	12030938	25.107	28.838
43)	L9 AR-1268-3	7.863	7.816	4633651	358312	3.565	1.133 #
44)	L9 AR-1268-4	8.160	8.108	3129927	352443	6.515	3.161 #
45)	L9 AR-1268-5	8.447	8.395	3963405	792760	1.214	1.091

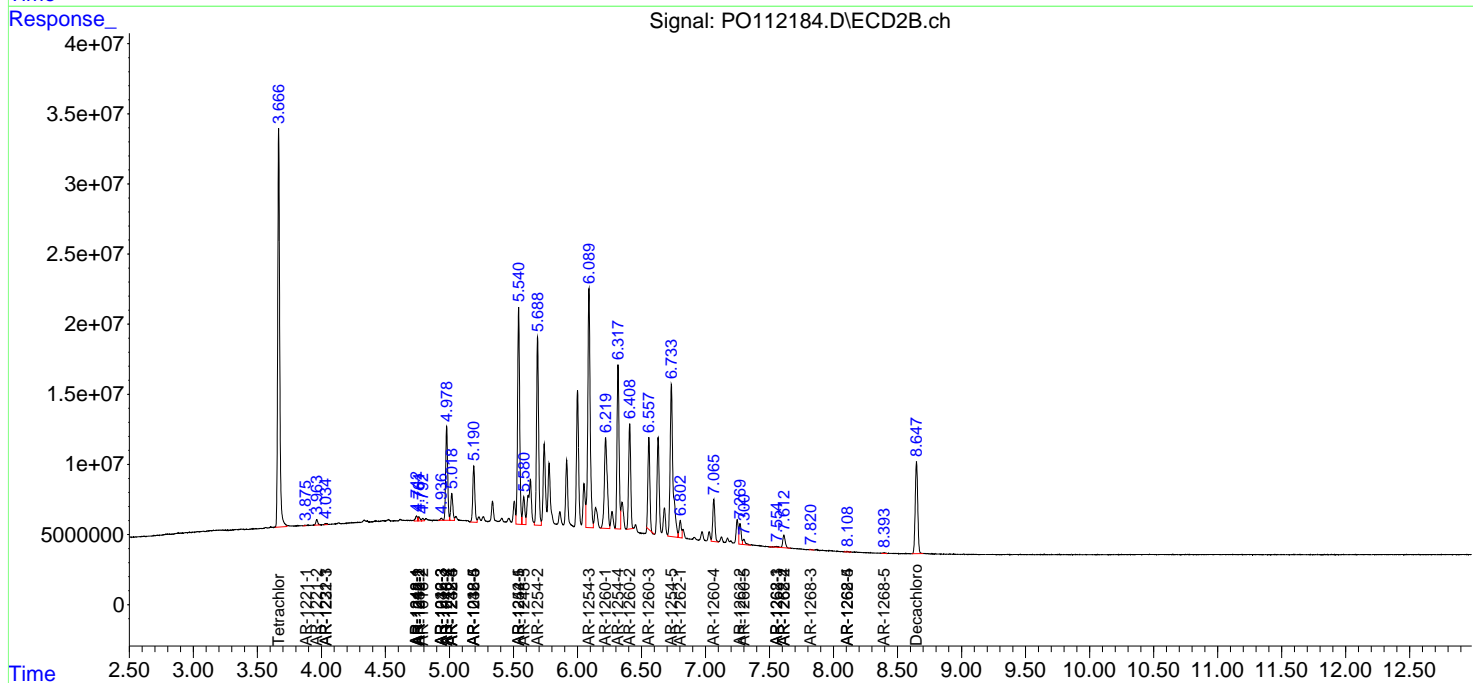
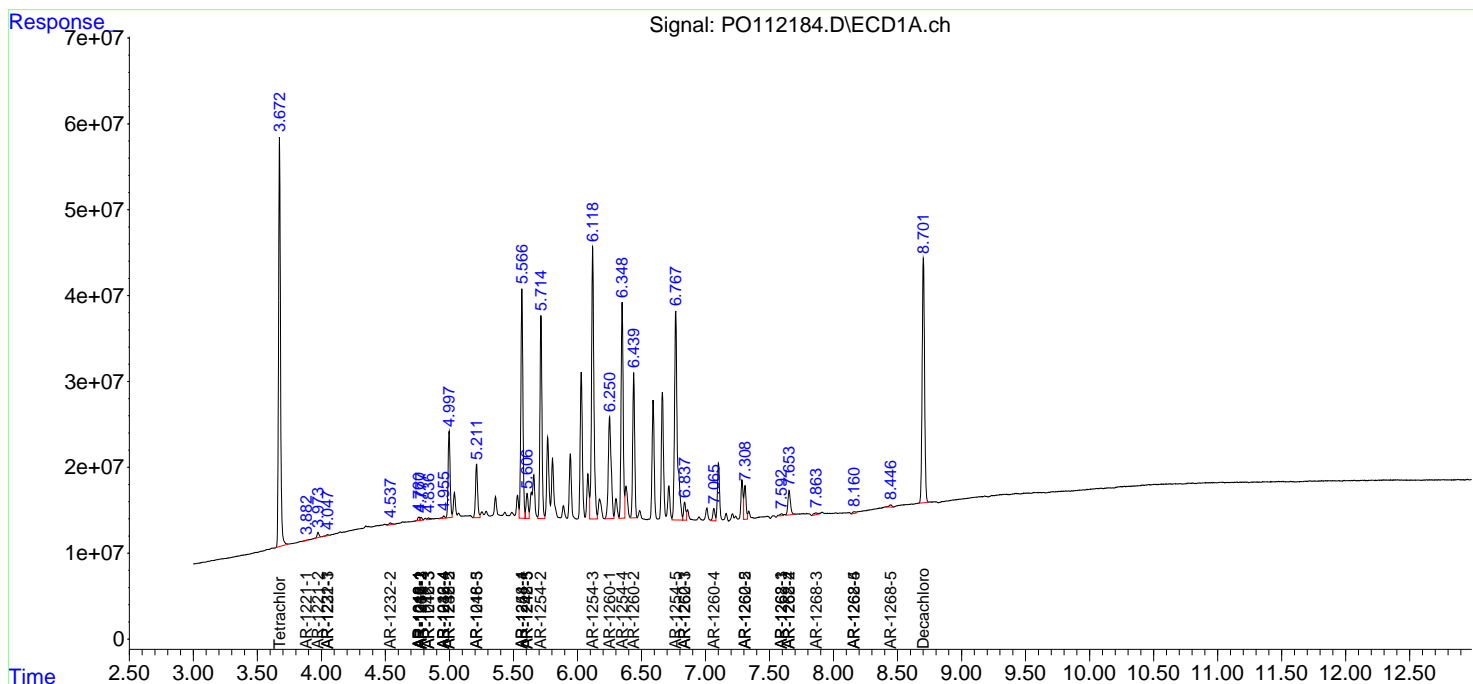
(f)=RT Delta > 1/2 Window (#)=Amounts differ by > 25% (m)=manual int.

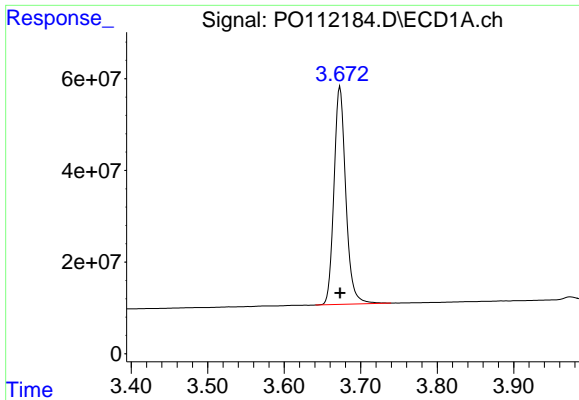
Data Path : Z:\pestpcbsrv\HPCHEM1\ECD_O\Data\PO071025\
 Data File : PO112184.D
 Signal(s) : Signal #1: ECD1A.ch Signal #2: ECD2B.ch
 Acq On : 10 Jul 2025 10:50
 Operator : YP/AJ
 Sample : AR1254CCC500
 Misc :
 ALS Vial : 6 Sample Multiplier: 1

Instrument :
 ECD_O
 ClientSampleId :
 AR1254CCC500

Integration File signal 1: autoint1.e
 Integration File signal 2: autoint2.e
 Quant Time: Jul 10 11:19:25 2025
 Quant Method : Z:\pestpcbsrv\HPCHEM1\ECD_O\methods\PO070825.M
 Quant Title : GC EXTRACTABLES
 QLast Update : Wed Jul 09 10:50:50 2025
 Response via : Initial Calibration
 Integrator: ChemStation

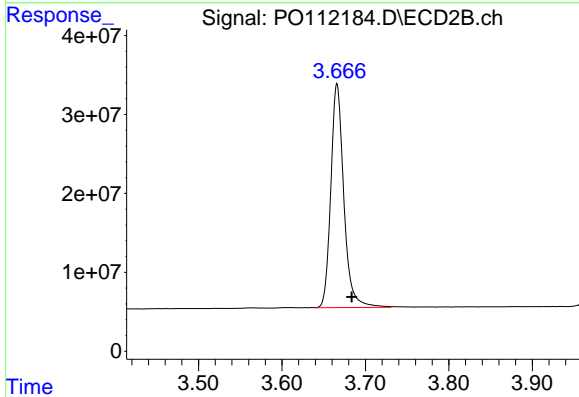
Volume Inj. : 2 µl
 Signal #1 Phase : ZB-MR1 Signal #2 Phase: ZB-MR2
 Signal #1 Info : 30Mx0.32mmx 0.50µ Signal #2 Info : 30M x 0.32mm x 0.25µm



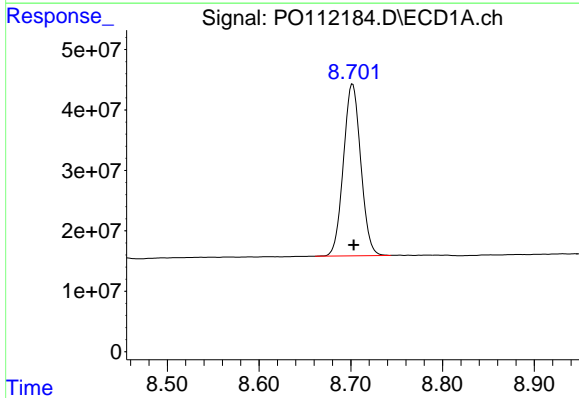


#1 Tetrachloro-m-xylene
 R.T.: 3.673 min
 Delta R.T.: 0.000 min
 Response: 508614291
 Conc: 51.40 ng/ml

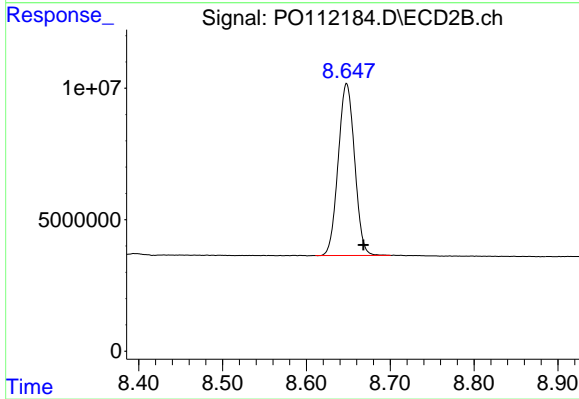
Instrument :
 ECD_O
 ClientSampleId :
 AR1254CCC500



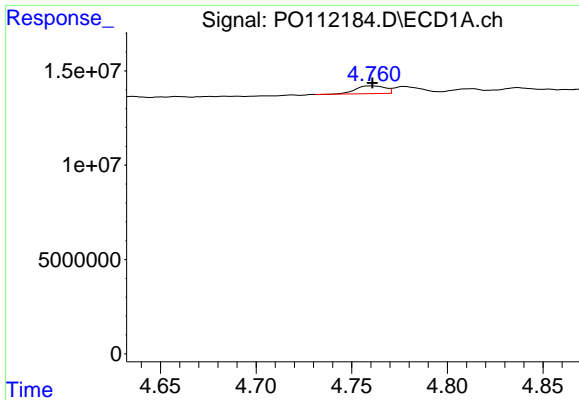
#1 Tetrachloro-m-xylene
 R.T.: 3.666 min
 Delta R.T.: -0.018 min
 Response: 307104280
 Conc: 48.20 ng/ml



#2 Decachlorobiphenyl
 R.T.: 8.702 min
 Delta R.T.: -0.001 min
 Response: 373579366
 Conc: 54.64 ng/ml



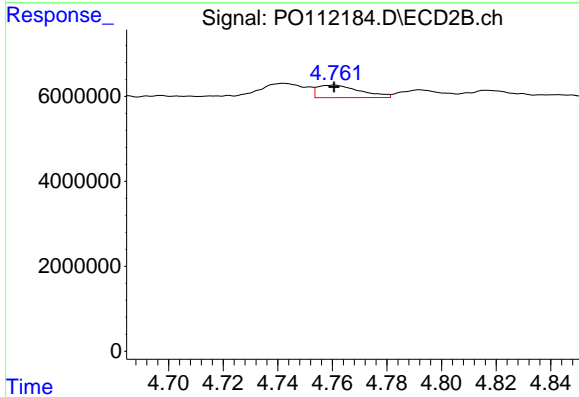
#2 Decachlorobiphenyl
 R.T.: 8.648 min
 Delta R.T.: -0.020 min
 Response: 88890062
 Conc: 51.58 ng/ml



#3 AR-1016-1

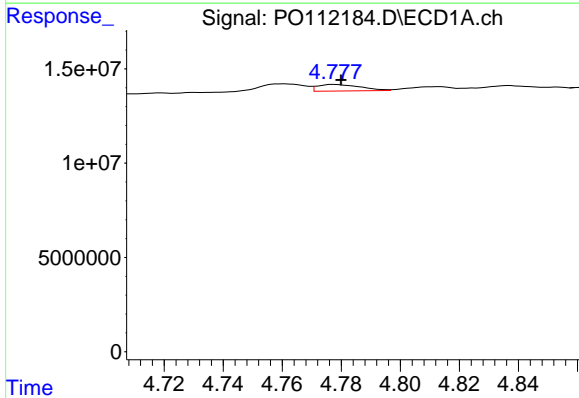
R.T.: 4.761 min
 Delta R.T.: 0.000 min
 Response: 4320325
 Conc: 12.70 ng/ml

Instrument :
 ECD_O
 ClientSampleId :
 AR1254CCC500



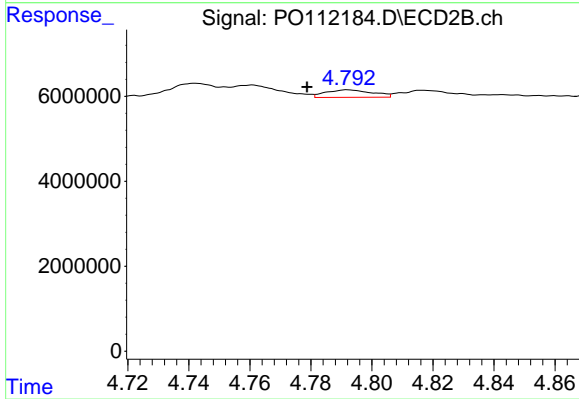
#3 AR-1016-1

R.T.: 4.761 min
 Delta R.T.: 0.000 min
 Response: 3220943
 Conc: 14.45 ng/ml



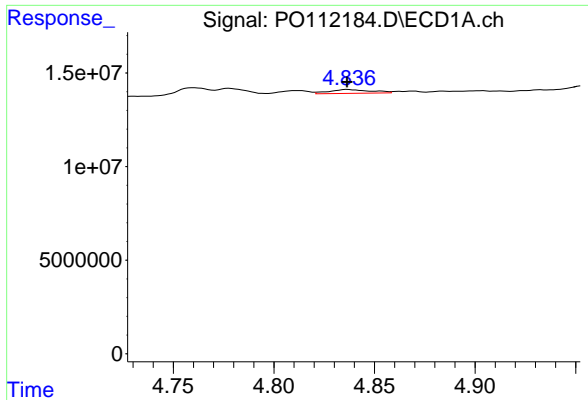
#4 AR-1016-2

R.T.: 4.778 min
 Delta R.T.: -0.002 min
 Response: 3554769
 Conc: 7.15 ng/ml



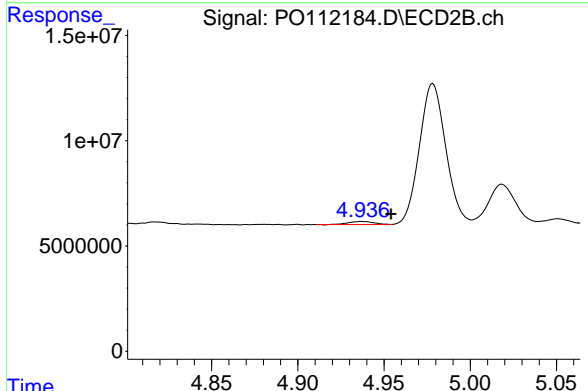
#4 AR-1016-2

R.T.: 4.792 min
 Delta R.T.: 0.013 min
 Response: 1873722
 Conc: 5.69 ng/ml

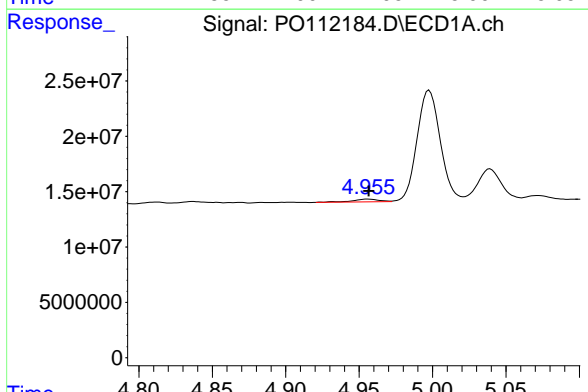


#5 AR-1016-3
 R.T.: 4.837 min
 Delta R.T.: 0.000 min
 Response: 2885526
 Conc: 8.91 ng/ml

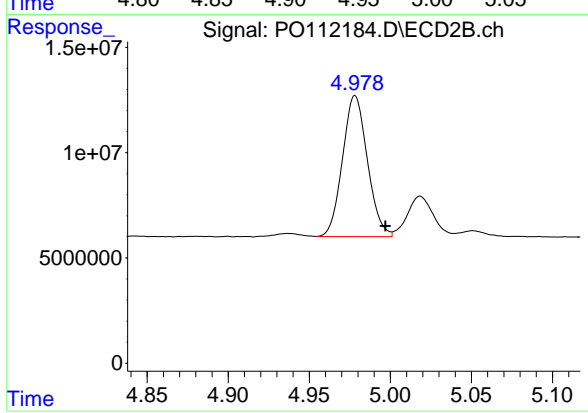
Instrument :
 ECD_O
 ClientSampleId :
 AR1254CCC500



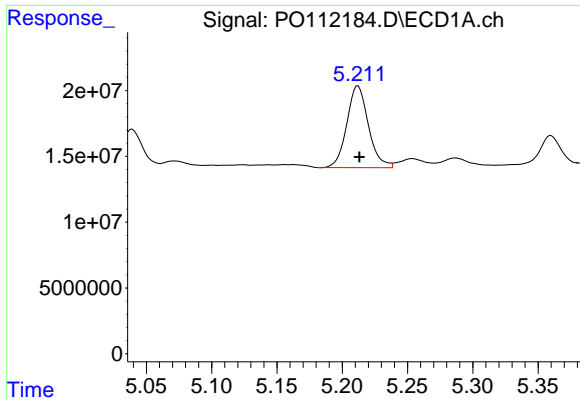
#5 AR-1016-3
 R.T.: 4.937 min
 Delta R.T.: -0.017 min
 Response: 1513682
 Conc: 8.91 ng/ml



#6 AR-1016-4
 R.T.: 4.956 min
 Delta R.T.: 0.000 min
 Response: 3175723
 Conc: 12.37 ng/ml



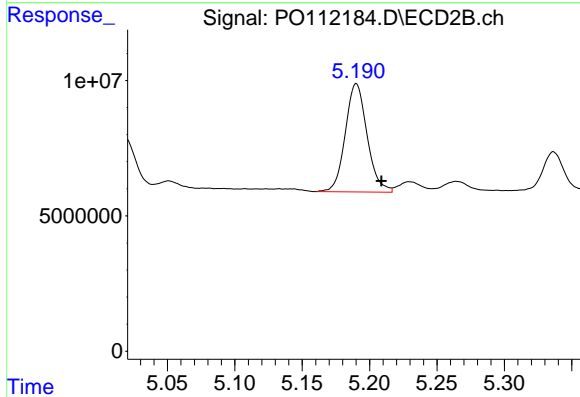
#6 AR-1016-4
 R.T.: 4.978 min
 Delta R.T.: -0.019 min
 Response: 71482392
 Conc: 520.90 ng/ml



#7 AR-1016-5

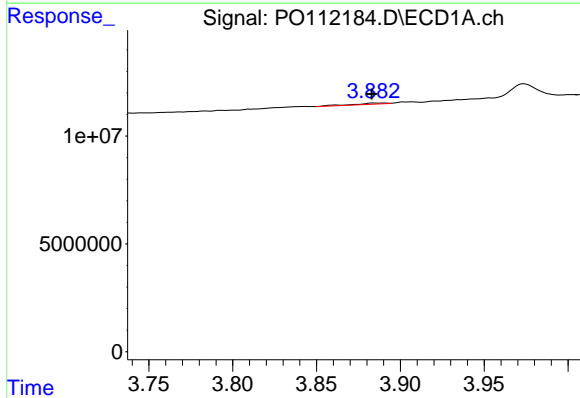
R.T.: 5.212 min
 Delta R.T.: -0.001 min
 Response: 71494394
 Conc: 261.25 ng/ml

Instrument :
 ECD_O
 ClientSampleId :
 AR1254CCC500



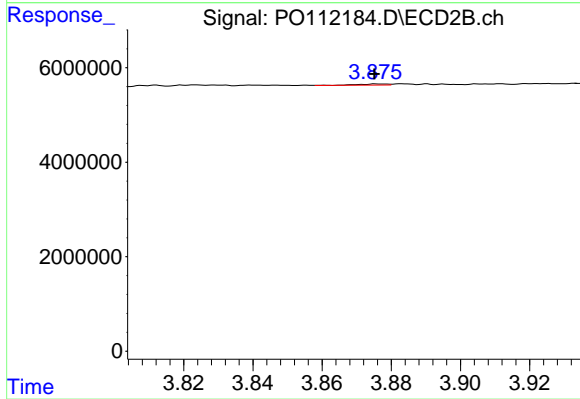
#7 AR-1016-5

R.T.: 5.190 min
 Delta R.T.: -0.019 min
 Response: 45257056
 Conc: 262.44 ng/ml



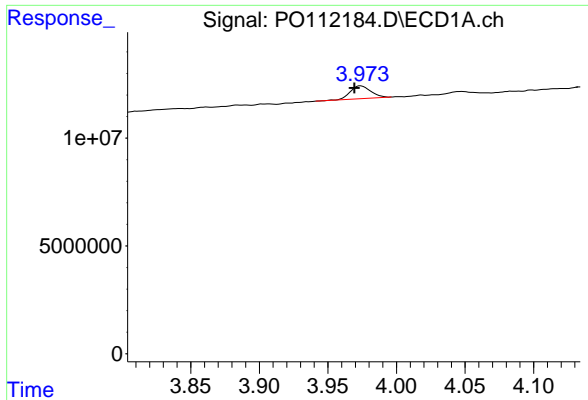
#8 AR-1221-1

R.T.: 3.884 min
 Delta R.T.: 0.001 min
 Response: 758275
 Conc: 6.50 ng/ml



#8 AR-1221-1

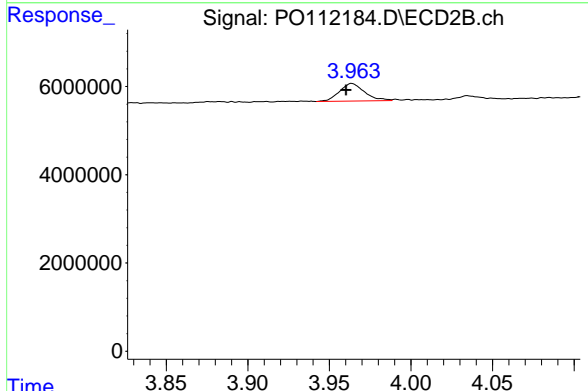
R.T.: 3.876 min
 Delta R.T.: 0.000 min
 Response: 163739
 Conc: 1.99 ng/ml



#9 AR-1221-2

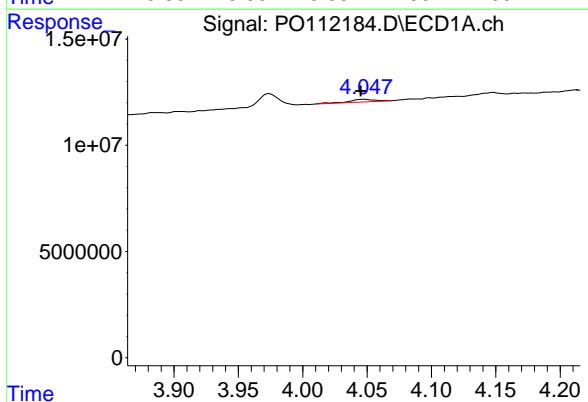
R.T.: 3.974 min
 Delta R.T.: 0.005 min
 Response: 6213670
 Conc: 78.81 ng/ml

Instrument : ECD_O
 ClientSampleId : AR1254CCC500



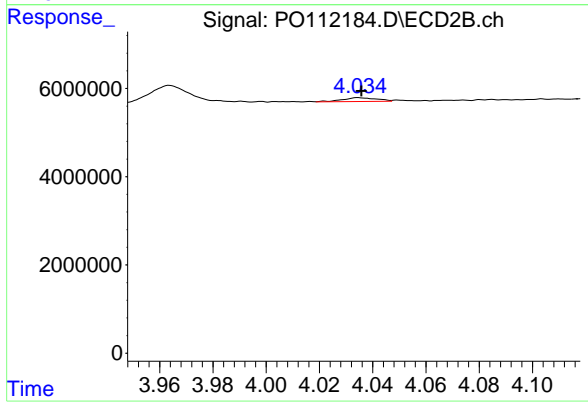
#9 AR-1221-2

R.T.: 3.964 min
 Delta R.T.: 0.003 min
 Response: 4251343
 Conc: 71.63 ng/ml



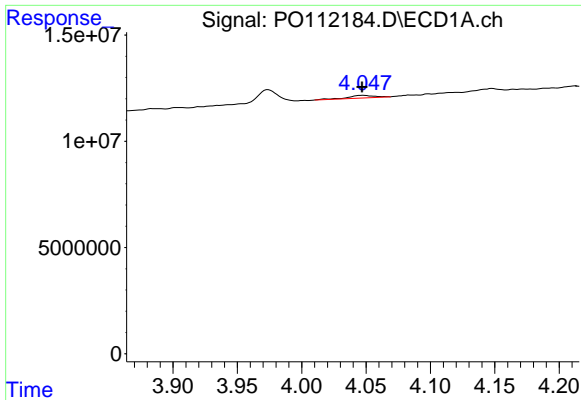
#10 AR-1221-3

R.T.: 4.048 min
 Delta R.T.: 0.003 min
 Response: 1745927
 Conc: 6.48 ng/ml



#10 AR-1221-3

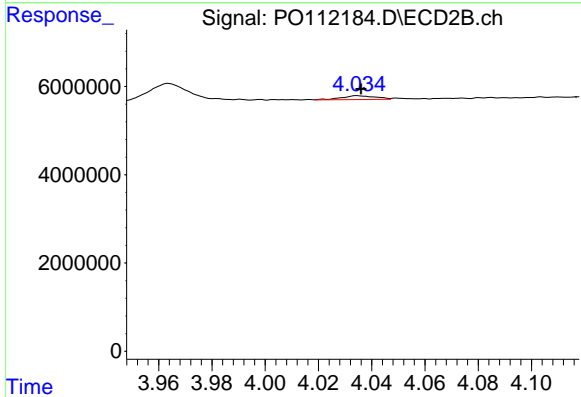
R.T.: 4.035 min
 Delta R.T.: -0.001 min
 Response: 750983
 Conc: 3.98 ng/ml



#11 AR-1232-1

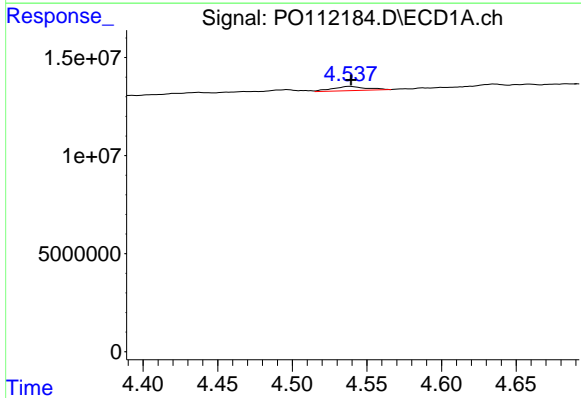
R.T.: 4.048 min
 Delta R.T.: 0.000 min
 Response: 1745927
 Conc: 8.13 ng/ml

Instrument :
 ECD_O
 ClientSampleId :
 AR1254CCC500



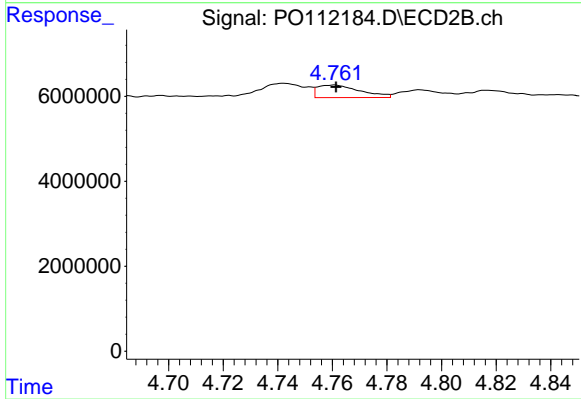
#11 AR-1232-1

R.T.: 4.035 min
 Delta R.T.: -0.001 min
 Response: 750983
 Conc: 5.00 ng/ml



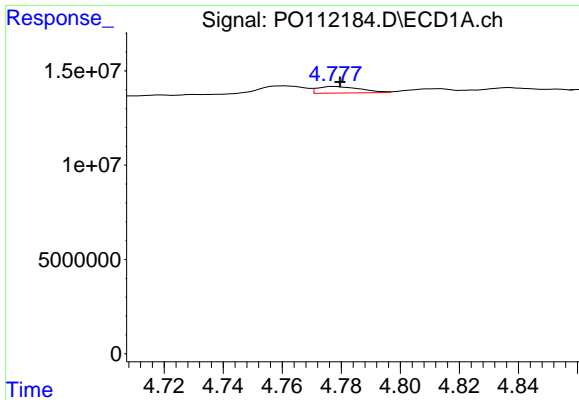
#12 AR-1232-2

R.T.: 4.539 min
 Delta R.T.: 0.000 min
 Response: 3457230
 Conc: 30.42 ng/ml



#12 AR-1232-2

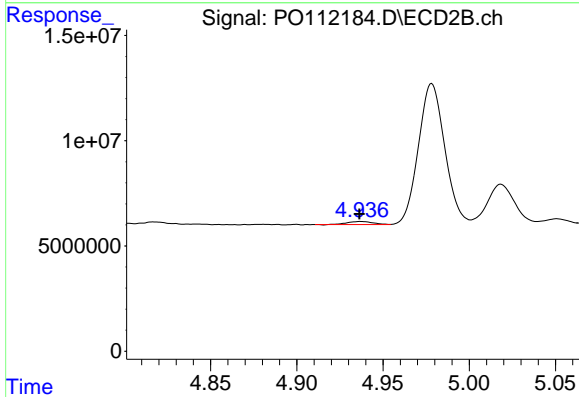
R.T.: 4.761 min
 Delta R.T.: 0.000 min
 Response: 3220943
 Conc: 21.04 ng/ml



#13 AR-1232-3

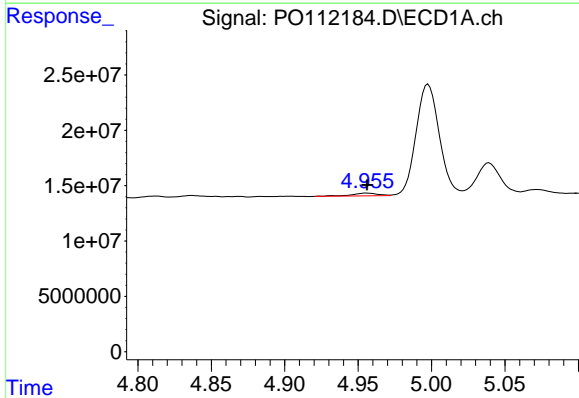
R.T.: 4.778 min
 Delta R.T.: -0.002 min
 Response: 3554769
 Conc: 15.52 ng/ml

Instrument :
 ECD_O
 ClientSampleId :
 AR1254CCC500



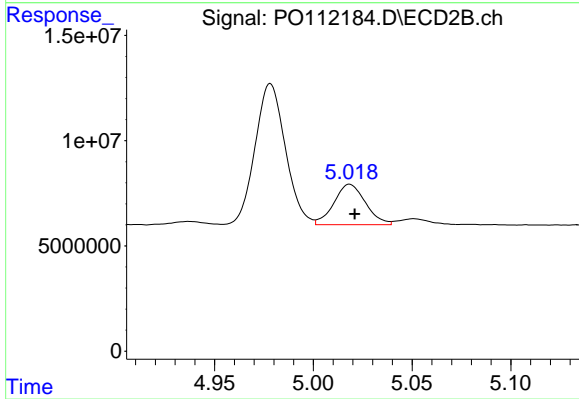
#13 AR-1232-3

R.T.: 4.937 min
 Delta R.T.: 0.000 min
 Response: 1513682
 Conc: 20.05 ng/ml



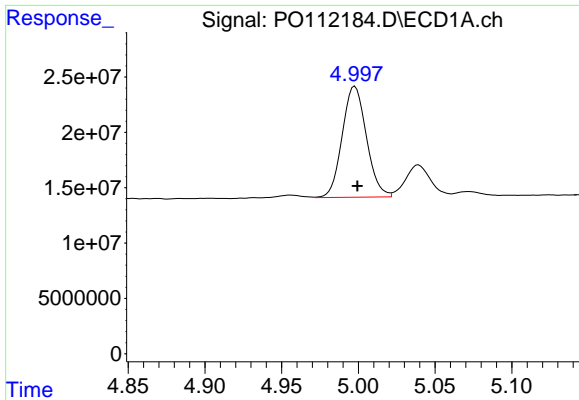
#14 AR-1232-4

R.T.: 4.956 min
 Delta R.T.: 0.000 min
 Response: 3175723
 Conc: 27.78 ng/ml



#14 AR-1232-4

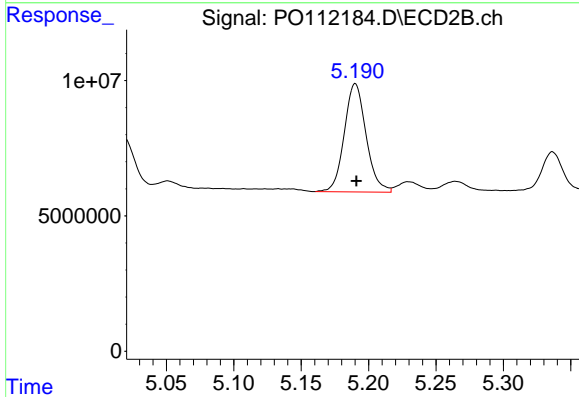
R.T.: 5.018 min
 Delta R.T.: -0.003 min
 Response: 21315690
 Conc: 323.02 ng/ml



#15 AR-1232-5

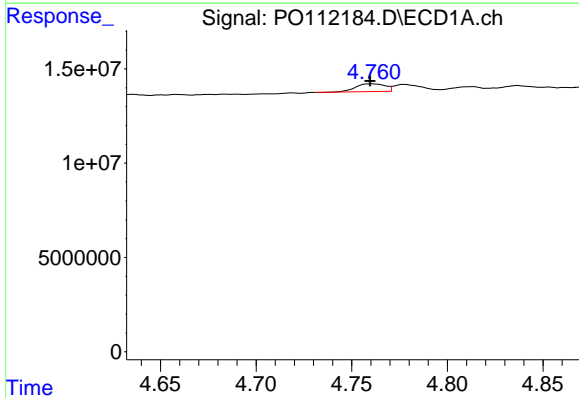
R.T.: 4.998 min
 Delta R.T.: -0.002 min
 Response: 110734604
 Conc: 1508.64 ng/ml

Instrument :
 ECD_O
 ClientSampleId :
 AR1254CCC500



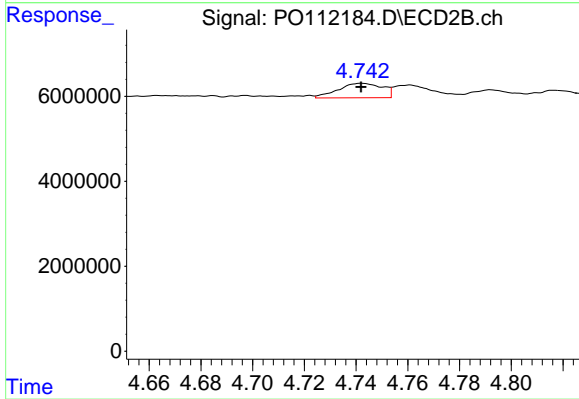
#15 AR-1232-5

R.T.: 5.190 min
 Delta R.T.: 0.000 min
 Response: 45257056
 Conc: 609.44 ng/ml



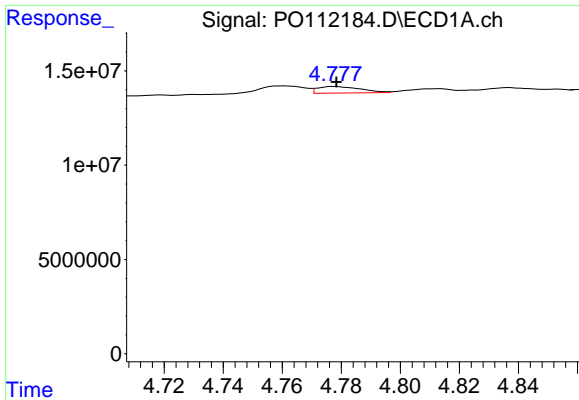
#16 AR-1242-1

R.T.: 4.761 min
 Delta R.T.: 0.001 min
 Response: 4320325
 Conc: 14.92 ng/ml



#16 AR-1242-1

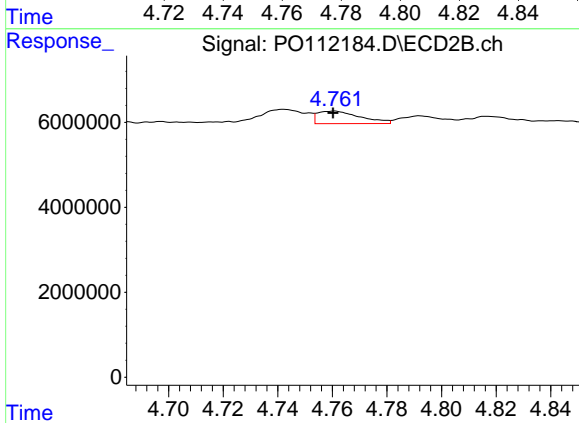
R.T.: 4.742 min
 Delta R.T.: 0.000 min
 Response: 4063384
 Conc: 20.96 ng/ml



#17 AR-1242-2

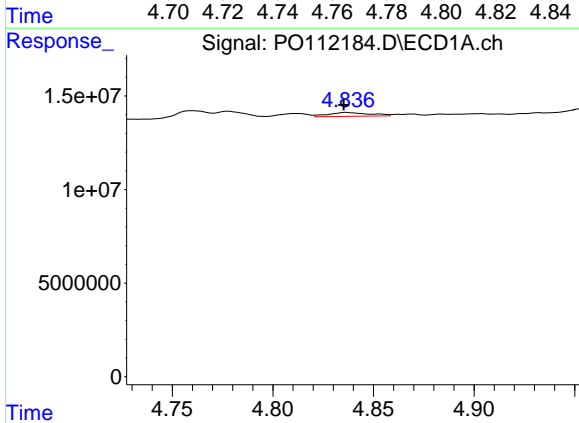
R.T.: 4.778 min
 Delta R.T.: 0.000 min
 Response: 3554769
 Conc: 8.35 ng/ml

Instrument :
 ECD_O
 ClientSampleId :
 AR1254CCC500



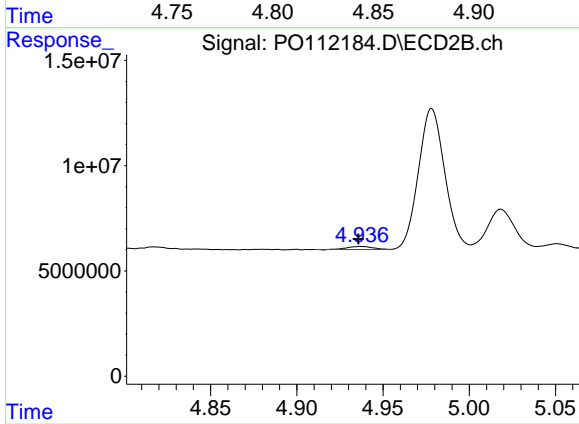
#17 AR-1242-2

R.T.: 4.761 min
 Delta R.T.: 0.000 min
 Response: 3220943
 Conc: 11.37 ng/ml



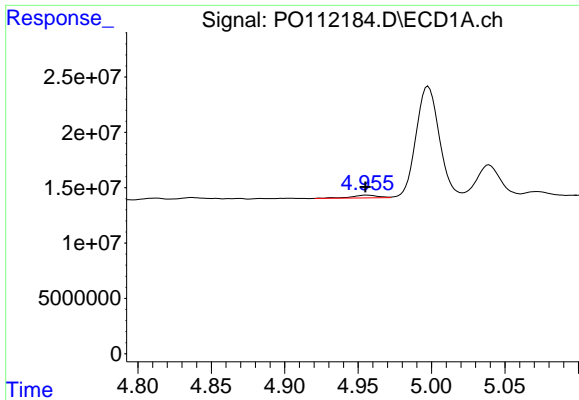
#18 AR-1242-3

R.T.: 4.837 min
 Delta R.T.: 0.002 min
 Response: 2885526
 Conc: 10.54 ng/ml



#18 AR-1242-3

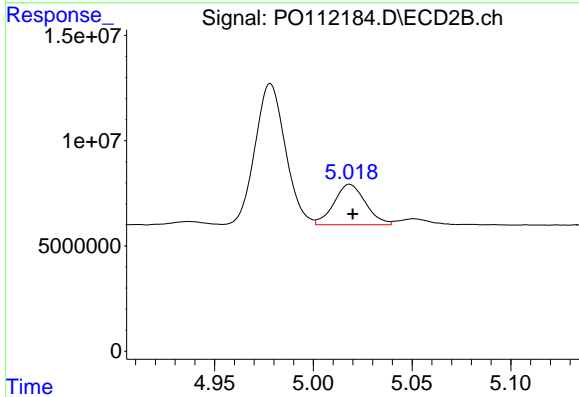
R.T.: 4.937 min
 Delta R.T.: 0.001 min
 Response: 1513682
 Conc: 10.39 ng/ml



#19 AR-1242-4

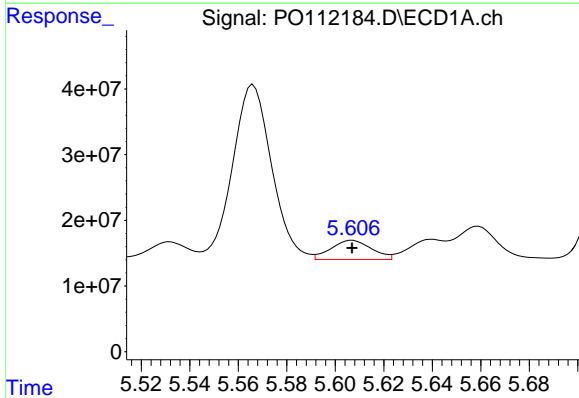
R.T.: 4.956 min
 Delta R.T.: 0.000 min
 Response: 3175723
 Conc: 14.09 ng/ml

Instrument :
 ECD_O
 ClientSampleId :
 AR1254CCC500



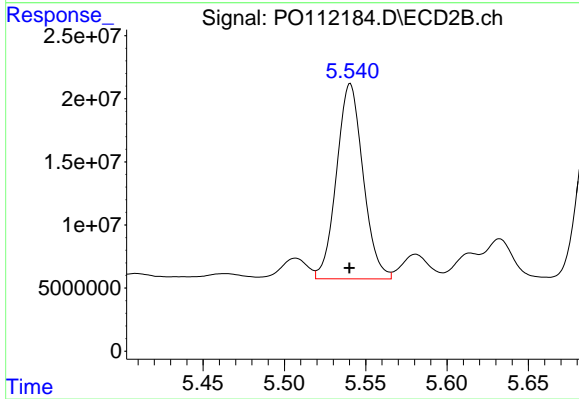
#19 AR-1242-4

R.T.: 5.018 min
 Delta R.T.: -0.002 min
 Response: 21315690
 Conc: 150.28 ng/ml



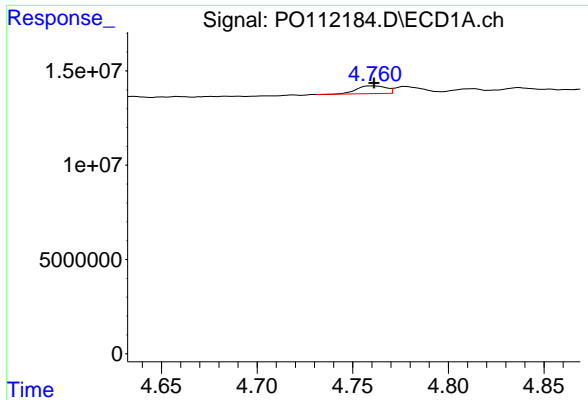
#20 AR-1242-5

R.T.: 5.607 min
 Delta R.T.: 0.000 min
 Response: 33712178
 Conc: 159.27 ng/ml



#20 AR-1242-5

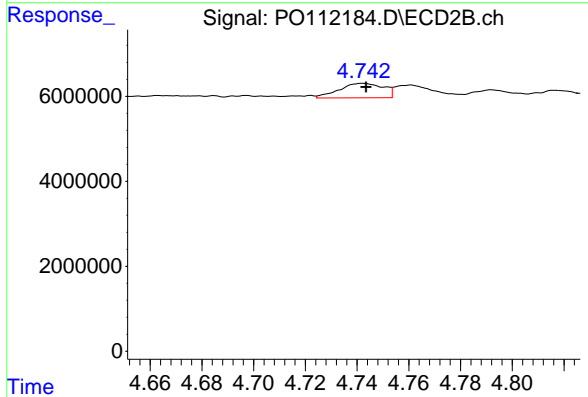
R.T.: 5.540 min
 Delta R.T.: 0.000 min
 Response: 175672626
 Conc: 966.65 ng/ml



#21 AR-1248-1

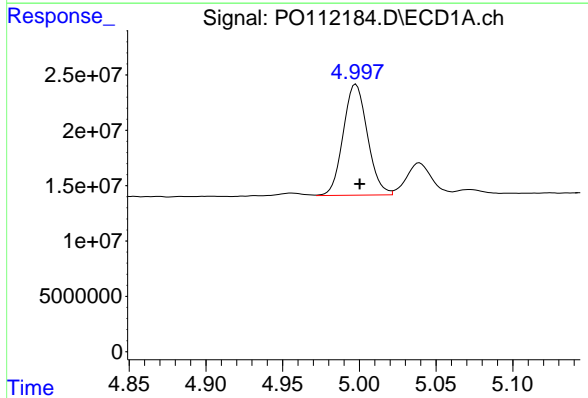
R.T.: 4.761 min
 Delta R.T.: 0.000 min
 Response: 4320325
 Conc: 19.04 ng/ml

Instrument :
 ECD_O
 ClientSampleId :
 AR1254CCC500



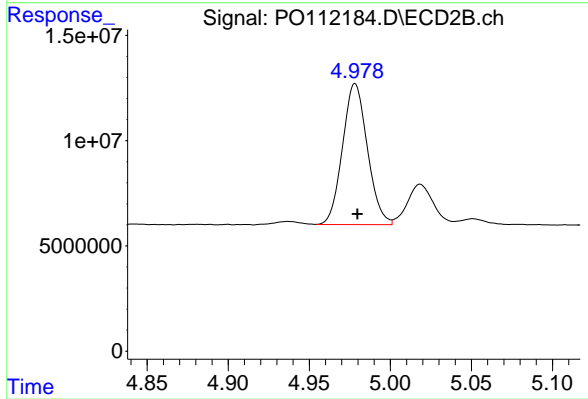
#21 AR-1248-1

R.T.: 4.742 min
 Delta R.T.: -0.001 min
 Response: 4063384
 Conc: 26.32 ng/ml



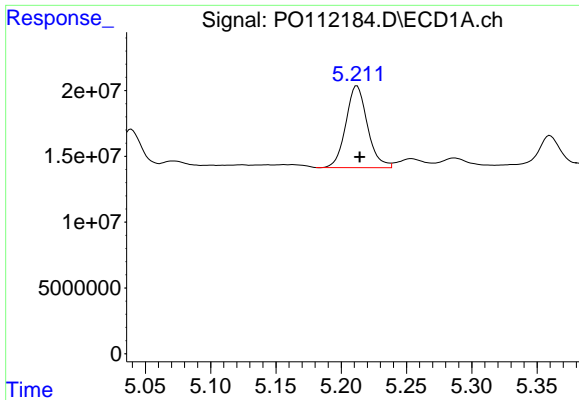
#22 AR-1248-2

R.T.: 4.998 min
 Delta R.T.: -0.002 min
 Response: 110734604
 Conc: 359.15 ng/ml



#22 AR-1248-2

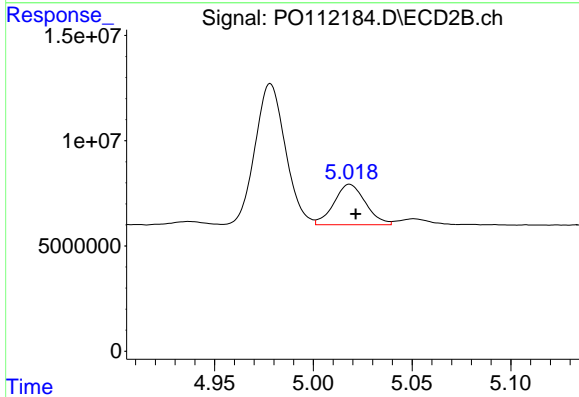
R.T.: 4.978 min
 Delta R.T.: -0.001 min
 Response: 71482392
 Conc: 347.39 ng/ml



#23 AR-1248-3

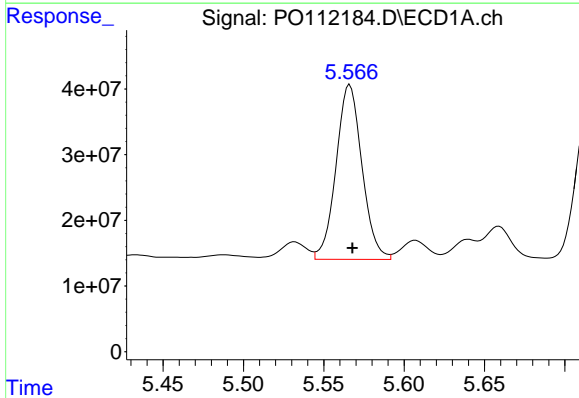
R.T.: 5.212 min
 Delta R.T.: -0.002 min
 Response: 71494394
 Conc: 175.52 ng/ml

Instrument :
 ECD_O
 ClientSampleId :
 AR1254CCC500



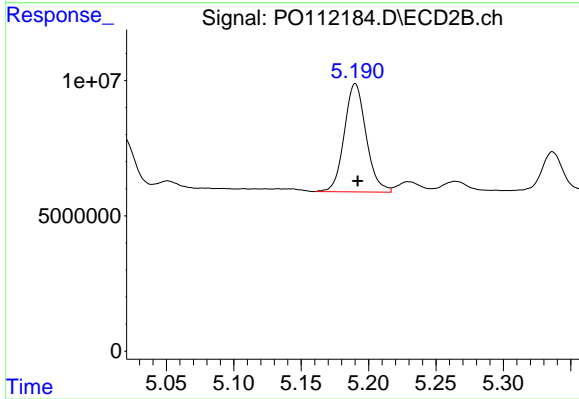
#23 AR-1248-3

R.T.: 5.018 min
 Delta R.T.: -0.003 min
 Response: 21315690
 Conc: 99.24 ng/ml



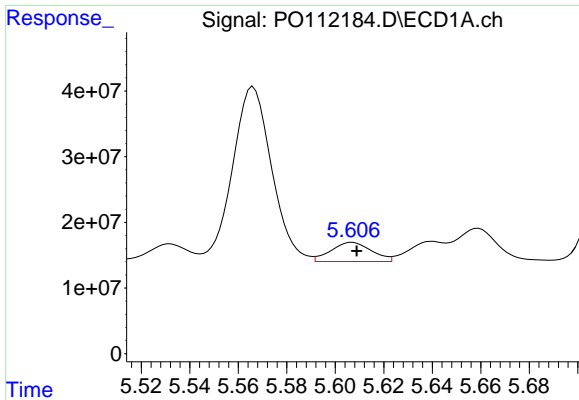
#24 AR-1248-4

R.T.: 5.566 min
 Delta R.T.: -0.002 min
 Response: 298213128
 Conc: 516.70 ng/ml



#24 AR-1248-4

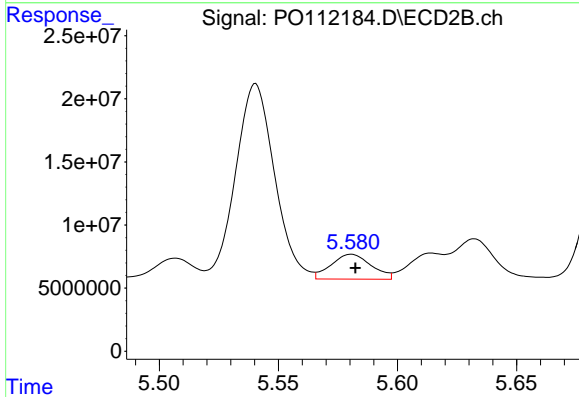
R.T.: 5.190 min
 Delta R.T.: -0.002 min
 Response: 45257056
 Conc: 174.92 ng/ml



#25 AR-1248-5

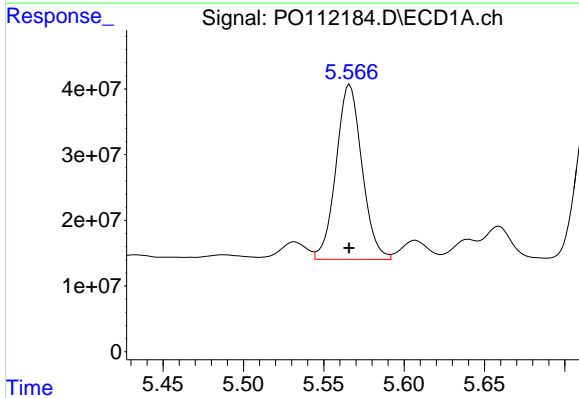
R.T.: 5.607 min
 Delta R.T.: -0.002 min
 Response: 33712178
 Conc: 86.37 ng/ml

Instrument :
 ECD_O
 ClientSampleId :
 AR1254CCC500



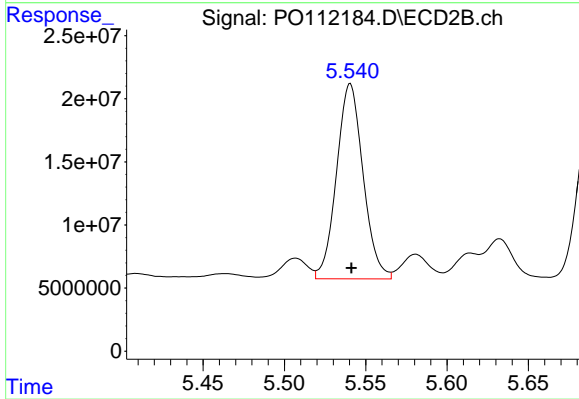
#25 AR-1248-5

R.T.: 5.581 min
 Delta R.T.: -0.002 min
 Response: 23081867
 Conc: 92.12 ng/ml



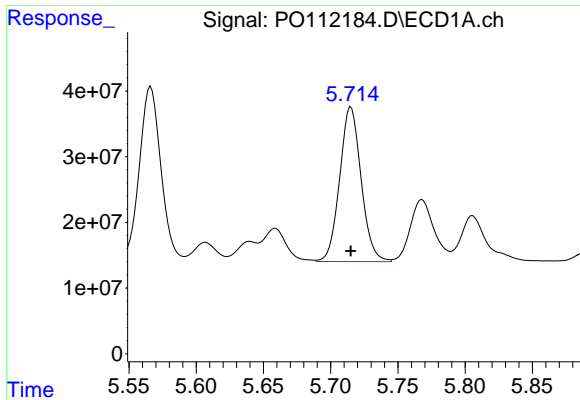
#26 AR-1254-1

R.T.: 5.566 min
 Delta R.T.: 0.000 min
 Response: 298213128
 Conc: 484.81 ng/ml



#26 AR-1254-1

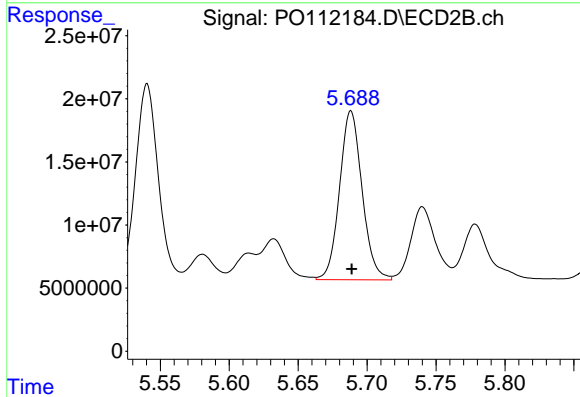
R.T.: 5.540 min
 Delta R.T.: 0.000 min
 Response: 175672626
 Conc: 460.88 ng/ml



#27 AR-1254-2

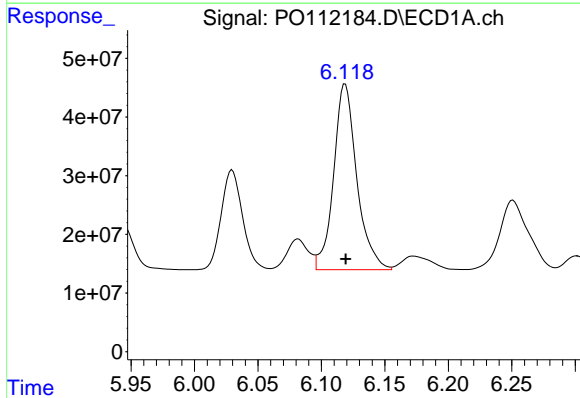
R.T.: 5.715 min
 Delta R.T.: 0.000 min
 Response: 260531008
 Conc: 486.35 ng/ml

Instrument :
 ECD_O
 ClientSampleId :
 AR1254CCC500



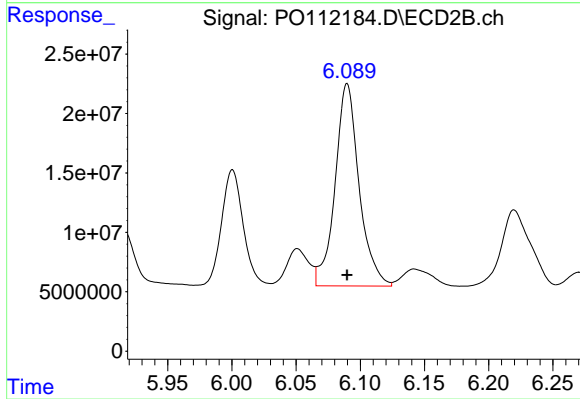
#27 AR-1254-2

R.T.: 5.688 min
 Delta R.T.: 0.000 min
 Response: 152384542
 Conc: 459.25 ng/ml



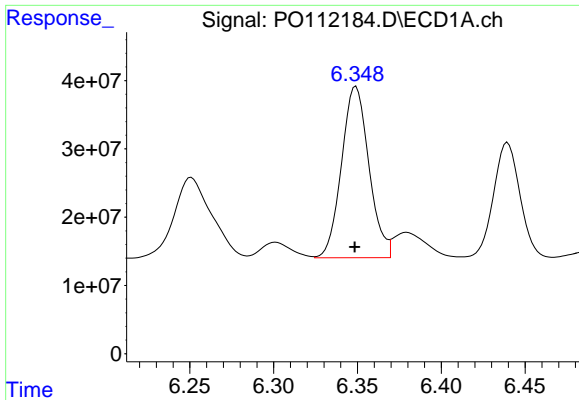
#28 AR-1254-3

R.T.: 6.119 min
 Delta R.T.: 0.000 min
 Response: 402558591
 Conc: 479.48 ng/ml



#28 AR-1254-3

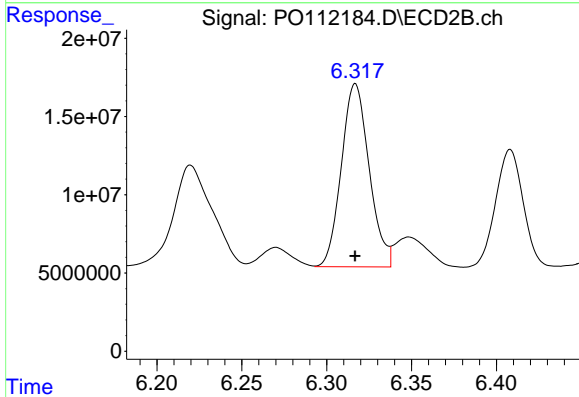
R.T.: 6.090 min
 Delta R.T.: 0.000 min
 Response: 221496078
 Conc: 459.49 ng/ml



#29 AR-1254-4

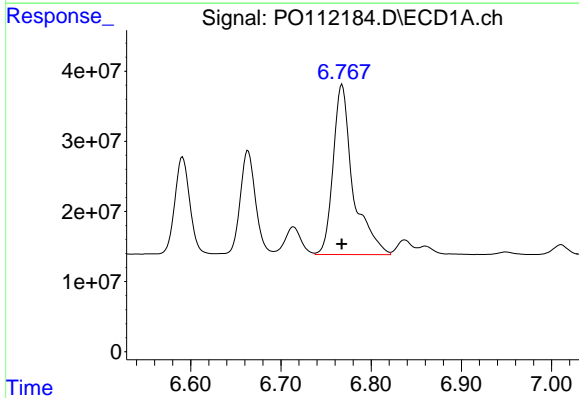
R.T.: 6.349 min
Delta R.T.: 0.000 min
Response: 285742815
Conc: 594.04 ng/ml

Instrument :
ECD_O
ClientSampleId :
AR1254CCC500



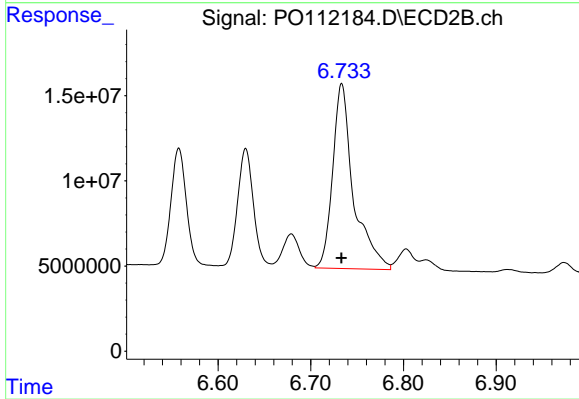
#29 AR-1254-4

R.T.: 6.317 min
Delta R.T.: 0.000 min
Response: 133247323
Conc: 511.12 ng/ml



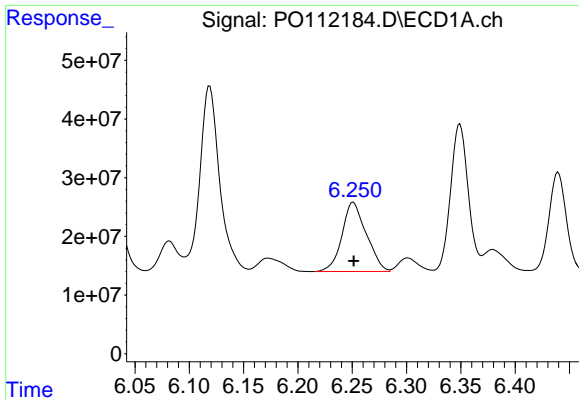
#30 AR-1254-5

R.T.: 6.768 min
Delta R.T.: 0.000 min
Response: 371340090
Conc: 479.80 ng/ml



#30 AR-1254-5

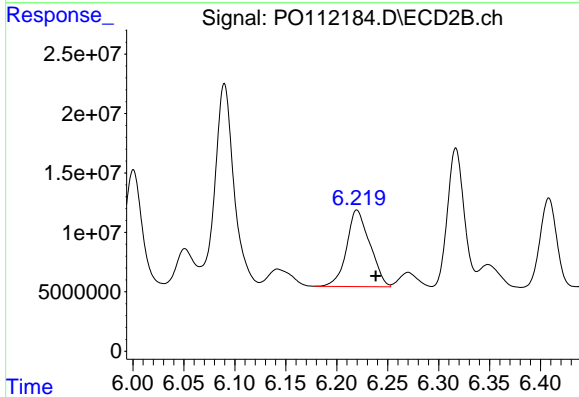
R.T.: 6.733 min
Delta R.T.: 0.000 min
Response: 169426474
Conc: 475.44 ng/ml



#31 AR-1260-1

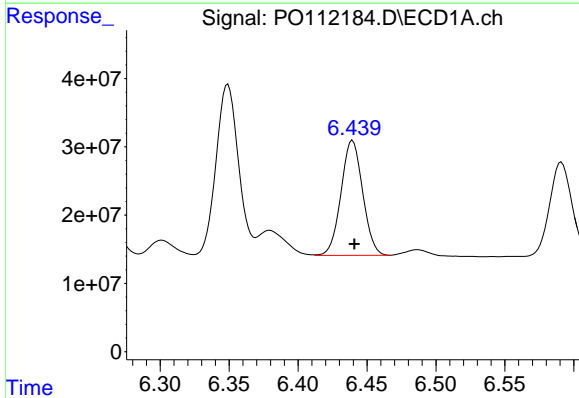
R.T.: 6.251 min
 Delta R.T.: 0.000 min
 Response: 184119634
 Conc: 367.33 ng/ml

Instrument :
 ECD_O
 ClientSampleId :
 AR1254CCC500



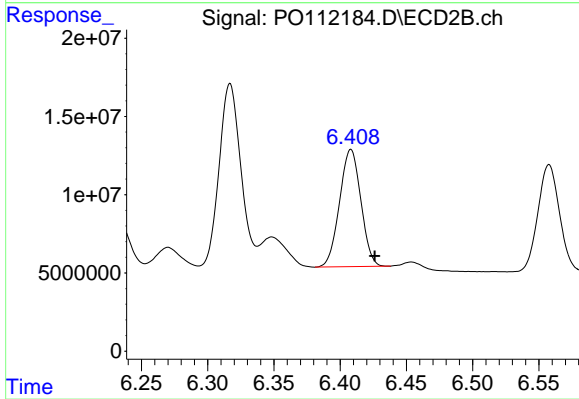
#31 AR-1260-1

R.T.: 6.220 min
 Delta R.T.: -0.018 min
 Response: 102211380
 Conc: 364.31 ng/ml



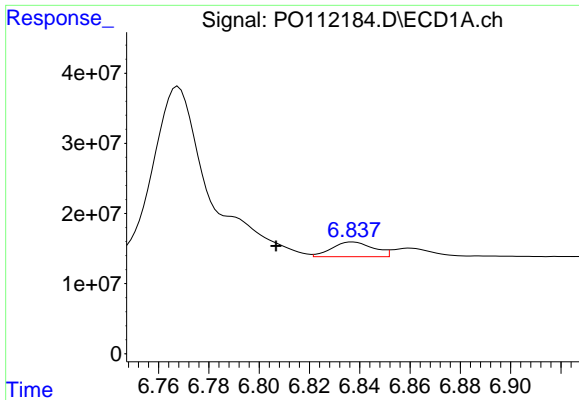
#32 AR-1260-2

R.T.: 6.440 min
 Delta R.T.: -0.001 min
 Response: 183911024
 Conc: 249.16 ng/ml



#32 AR-1260-2

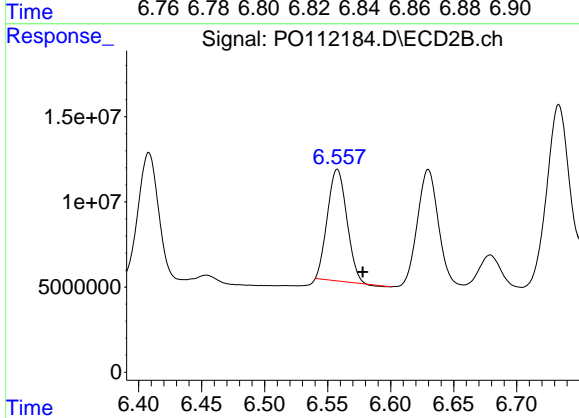
R.T.: 6.408 min
 Delta R.T.: -0.018 min
 Response: 83958138
 Conc: 246.94 ng/ml



#33 AR-1260-3

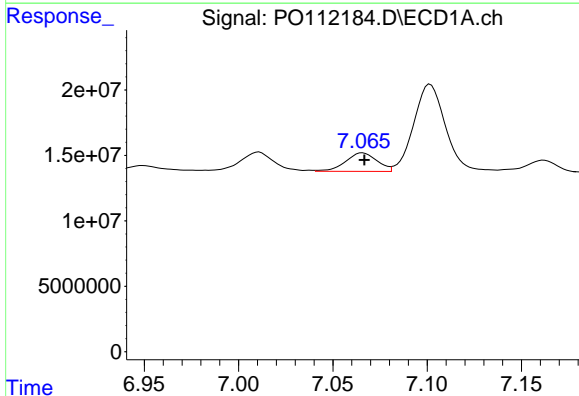
R.T.: 6.837 min
 Delta R.T.: 0.031 min
 Response: 24079671
 Conc: 36.74 ng/ml

Instrument :
 ECD_O
 ClientSampleId :
 AR1254CCC500



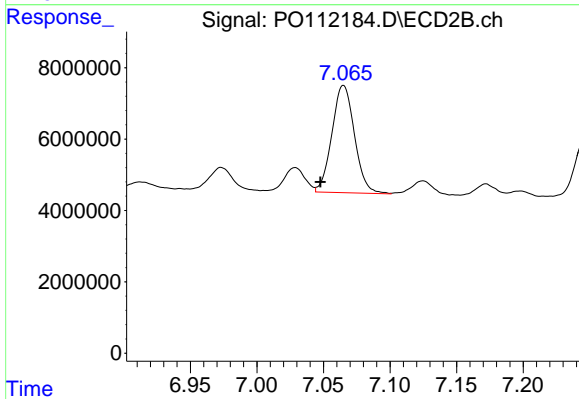
#33 AR-1260-3

R.T.: 6.558 min
 Delta R.T.: -0.020 min
 Response: 70094556
 Conc: 254.35 ng/ml



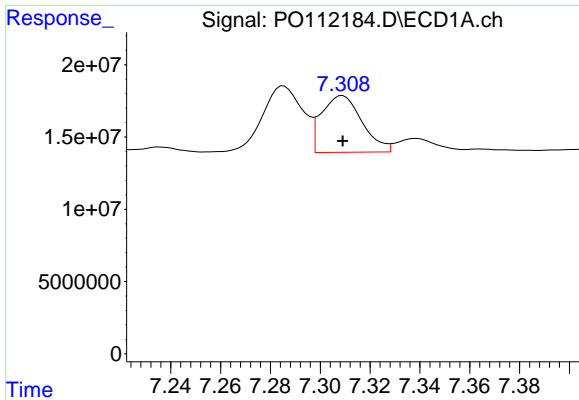
#34 AR-1260-4

R.T.: 7.066 min
 Delta R.T.: 0.000 min
 Response: 16505451
 Conc: 37.92 ng/ml



#34 AR-1260-4

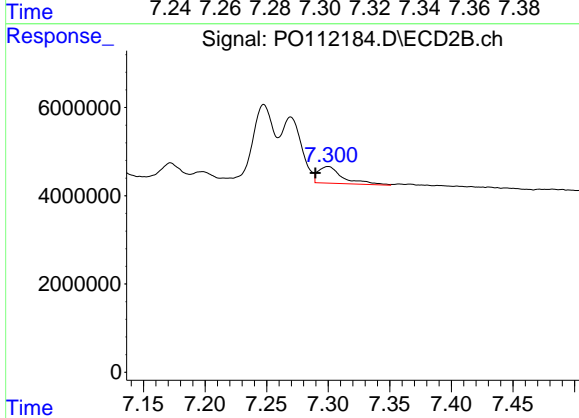
R.T.: 7.065 min
 Delta R.T.: 0.017 min
 Response: 35465351
 Conc: 176.76 ng/ml



#35 AR-1260-5

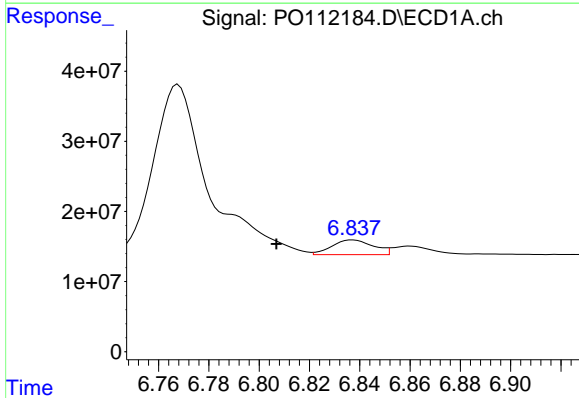
R.T.: 7.309 min
 Delta R.T.: 0.000 min
 Response: 44318015
 Conc: 35.10 ng/ml

Instrument :
 ECD_O
 ClientSampleId :
 AR1254CCC500



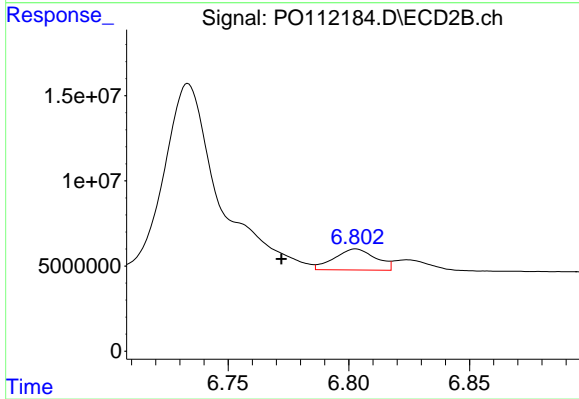
#35 AR-1260-5

R.T.: 7.300 min
 Delta R.T.: 0.010 min
 Response: 5317358
 Conc: 11.88 ng/ml



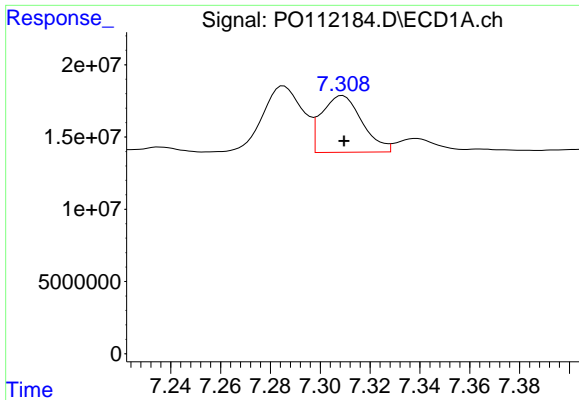
#36 AR-1262-1

R.T.: 6.837 min
 Delta R.T.: 0.030 min
 Response: 24079671
 Conc: 23.57 ng/ml



#36 AR-1262-1

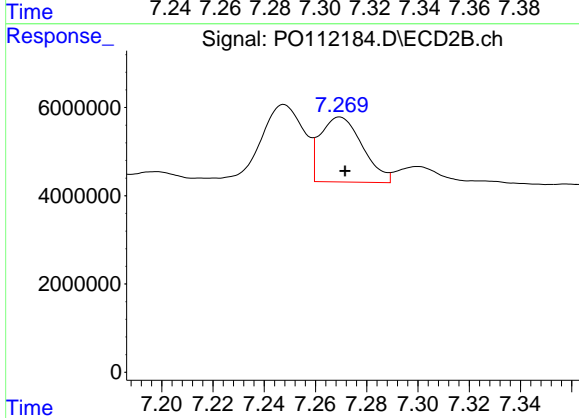
R.T.: 6.803 min
 Delta R.T.: 0.031 min
 Response: 14669716
 Conc: 36.02 ng/ml



#37 AR-1262-2

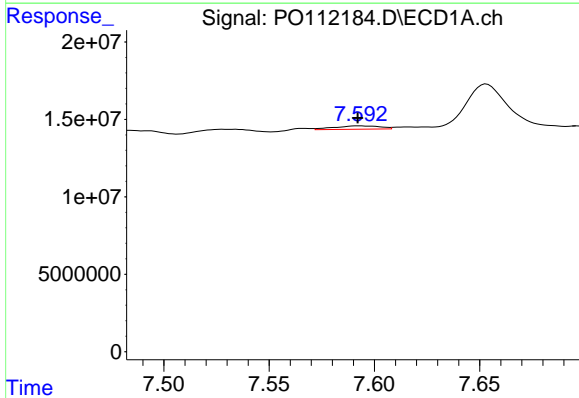
R.T.: 7.309 min
 Delta R.T.: 0.000 min
 Response: 44318015
 Conc: 27.03 ng/ml

Instrument :
 ECD_O
 ClientSampleId :
 AR1254CCC500



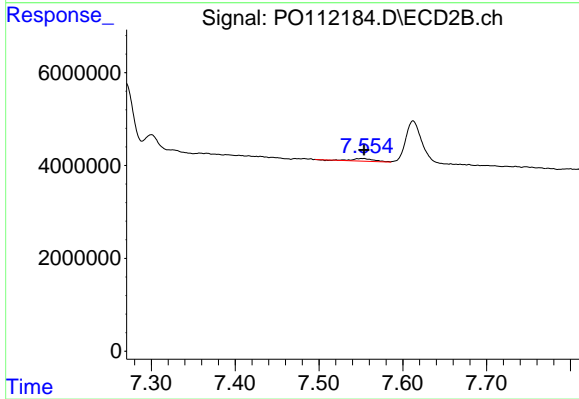
#37 AR-1262-2

R.T.: 7.270 min
 Delta R.T.: -0.002 min
 Response: 16826463
 Conc: 32.83 ng/ml



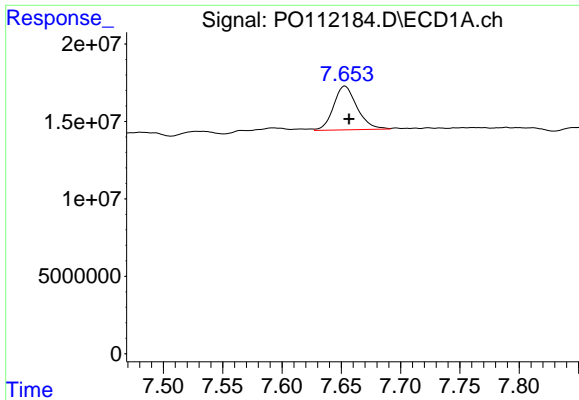
#38 AR-1262-3

R.T.: 7.593 min
 Delta R.T.: 0.000 min
 Response: 3261955
 Conc: 5.08 ng/ml



#38 AR-1262-3

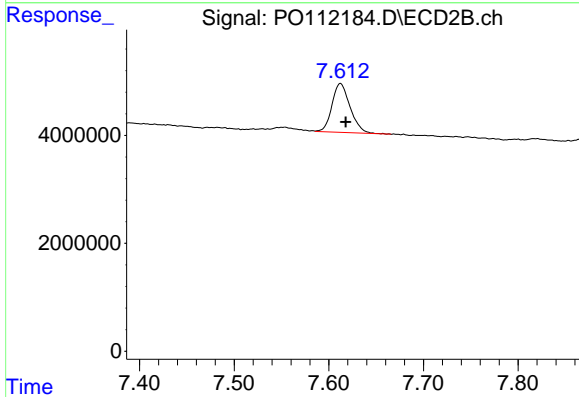
R.T.: 7.553 min
 Delta R.T.: 0.000 min
 Response: 1012448
 Conc: 5.64 ng/ml



#39 AR-1262-4

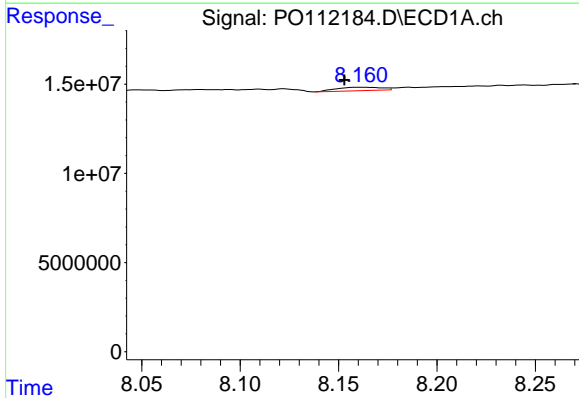
R.T.: 7.653 min
 Delta R.T.: -0.003 min
 Response: 39106950
 Conc: 36.50 ng/ml

Instrument :
 ECD_O
 ClientSampleId :
 AR1254CCC500



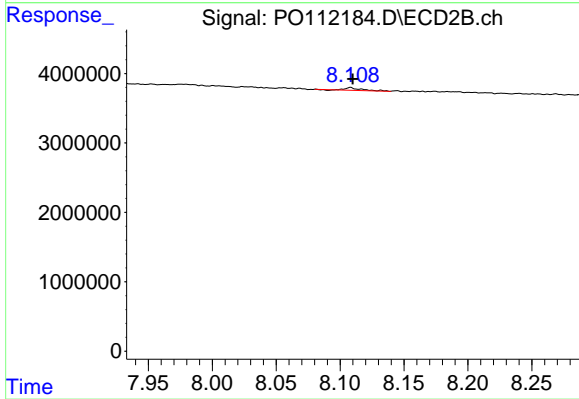
#39 AR-1262-4

R.T.: 7.612 min
 Delta R.T.: -0.006 min
 Response: 12030938
 Conc: 41.35 ng/ml



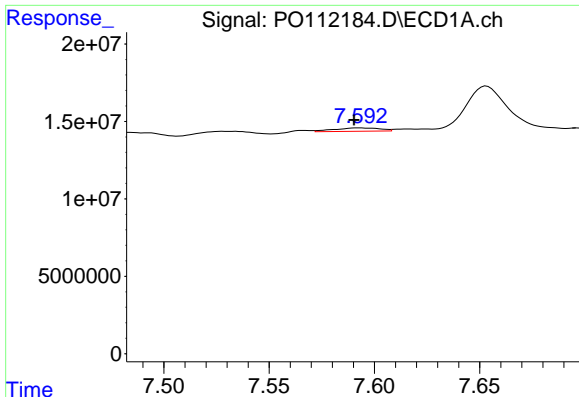
#40 AR-1262-5

R.T.: 8.160 min
 Delta R.T.: 0.007 min
 Response: 3129927
 Conc: 6.98 ng/ml



#40 AR-1262-5

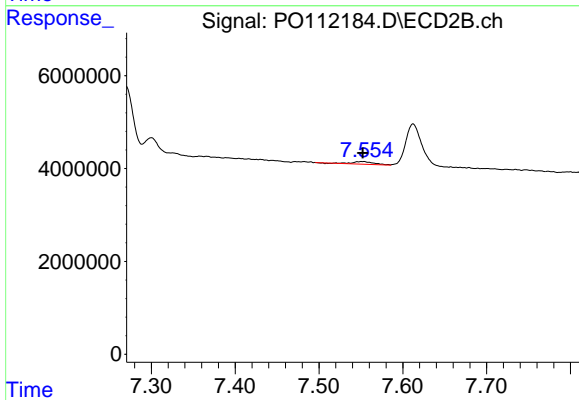
R.T.: 8.108 min
 Delta R.T.: -0.002 min
 Response: 352443
 Conc: 3.33 ng/ml



#41 AR-1268-1

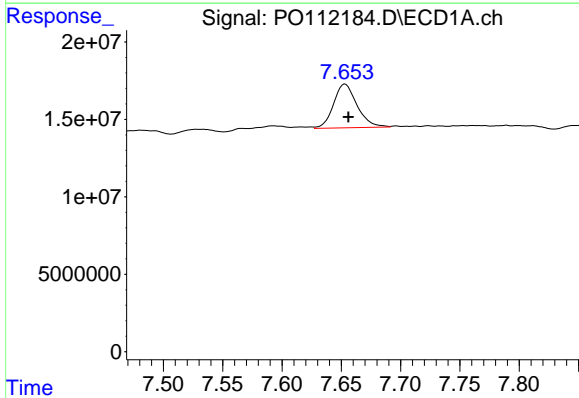
R.T.: 7.593 min
 Delta R.T.: 0.003 min
 Response: 3261955
 Conc: 1.78 ng/ml

Instrument :
 ECD_O
 ClientSampleId :
 AR1254CCC500



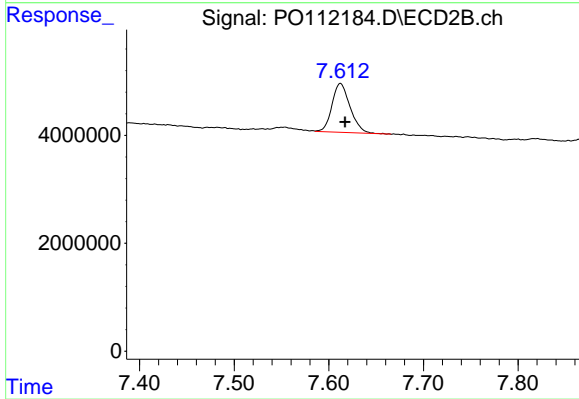
#41 AR-1268-1

R.T.: 7.553 min
 Delta R.T.: 0.000 min
 Response: 1012448
 Conc: 2.06 ng/ml



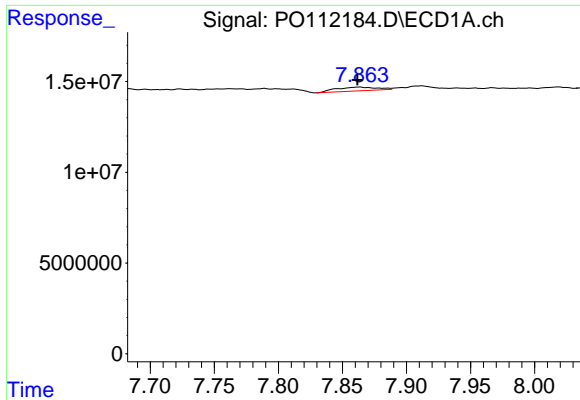
#42 AR-1268-2

R.T.: 7.653 min
 Delta R.T.: -0.003 min
 Response: 39106950
 Conc: 25.11 ng/ml



#42 AR-1268-2

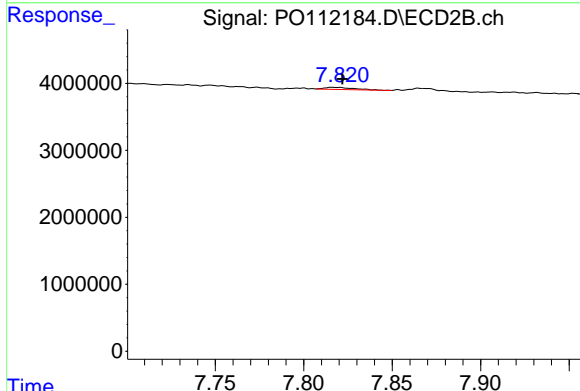
R.T.: 7.612 min
 Delta R.T.: -0.005 min
 Response: 12030938
 Conc: 28.84 ng/ml



#43 AR-1268-3

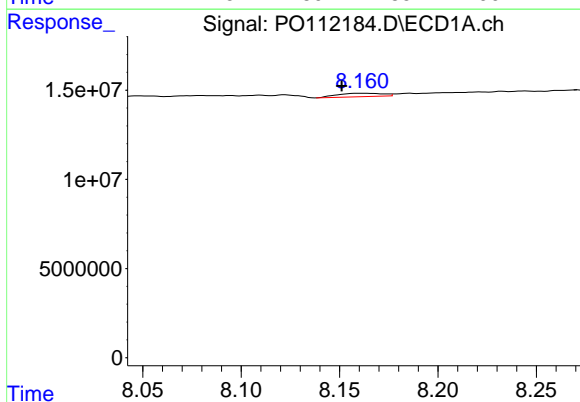
R.T.: 7.863 min
 Delta R.T.: 0.002 min
 Response: 4633651
 Conc: 3.57 ng/ml

Instrument :
 ECD_O
 ClientSampleId :
 AR1254CCC500



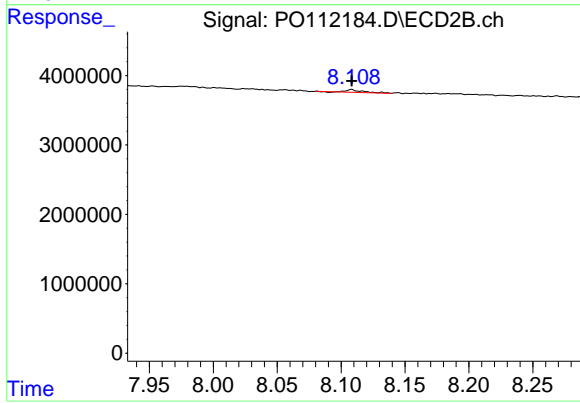
#43 AR-1268-3

R.T.: 7.816 min
 Delta R.T.: -0.005 min
 Response: 358312
 Conc: 1.13 ng/ml



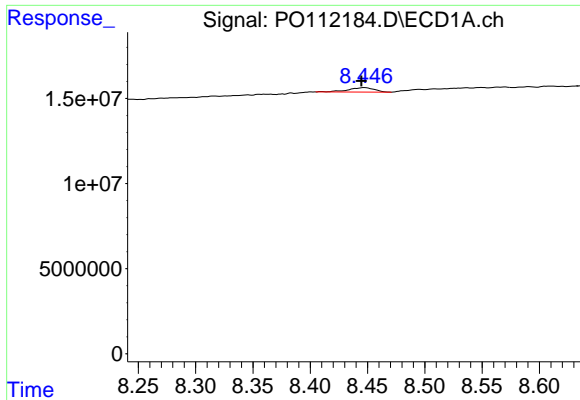
#44 AR-1268-4

R.T.: 8.160 min
 Delta R.T.: 0.009 min
 Response: 3129927
 Conc: 6.52 ng/ml



#44 AR-1268-4

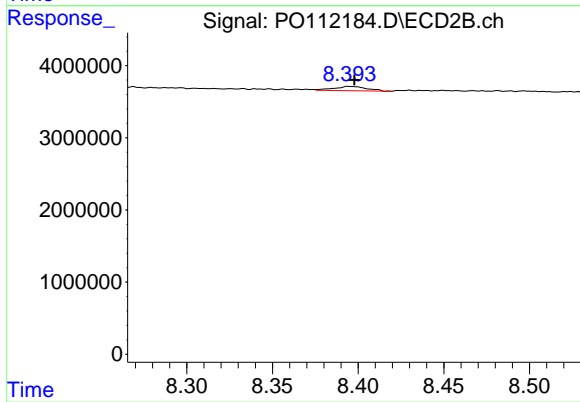
R.T.: 8.108 min
 Delta R.T.: 0.000 min
 Response: 352443
 Conc: 3.16 ng/ml



#45 AR-1268-5

R.T.: 8.447 min
 Delta R.T.: 0.003 min
 Response: 3963405
 Conc: 1.21 ng/ml

Instrument :
 ECD_O
 ClientSampleId :
 AR1254CCC500



#45 AR-1268-5

R.T.: 8.395 min
 Delta R.T.: -0.003 min
 Response: 792760
 Conc: 1.09 ng/ml