

Data Path : Z:\pestpcbsrv\HPCHEM1\ECD_O\Data\P0071025\
 Data File : PO112186.D
 Signal(s) : Signal #1: ECD1A.ch Signal #2: ECD2B.ch
 Acq On : 10 Jul 2025 11:27
 Operator : YP/AJ
 Sample : DDT ANALOGUE
 Misc :
 ALS Vial : 7 Sample Multiplier: 1

Instrument :
 ECD_O
 ClientSampleId :
 DDT ANALOGUE

Integration File signal 1: autoint1.e
 Integration File signal 2: autoint2.e
 Quant Time: Jul 10 15:41:58 2025
 Quant Method : Z:\pestpcbsrv\HPCHEM1\ECD_O\methods\P0070825.M
 Quant Title : GC EXTRACTABLES
 QLast Update : Wed Jul 09 10:50:50 2025
 Response via : Initial Calibration
 Integrator: ChemStation

Volume Inj. : 2 µl
 Signal #1 Phase : ZB-MR1 Signal #2 Phase: ZB-MR2
 Signal #1 Info : 30Mx0.32mmx 0.50µ Signal #2 Info : 30M x 0.32mm x 0.25µm

Compound	RT#1	RT#2	Resp#1	Resp#2	ng/ml	ng/ml
System Monitoring Compounds						
1) SA Tetrachlo...	0.000	3.679	0	25592	N.D.	0.004 #
2) SA Decachlor...	8.707	8.679	282203	28927	0.041	0.017 #
Target Compounds						
3) L1 AR-1016-1	4.765	4.757	1062280	624097	3.123	2.801
4) L1 AR-1016-2	4.780	4.778	937883	399189	1.886	1.213 #
5) L1 AR-1016-3	4.839	4.939	3090948	6838309	9.548	40.257 #
6) L1 AR-1016-4	4.960	4.994	30889924	9154358	120.288	66.709 #
7) L1 AR-1016-5	5.228	5.223	78387818	16077577	286.440	93.230 #
8) L2 AR-1221-1	3.910	3.886	1174403	362243	10.071	4.402 #
9) L2 AR-1221-2	3.985	3.956	580579	49098	7.364	0.827 #
10) L2 AR-1221-3	4.059	4.040	148512	66804	0.551	0.354 #
11) L3 AR-1232-1	4.059	4.040	148512	66804	0.692	0.445 #
12) L3 AR-1232-2	4.555	4.757	3114780	624097	27.410	4.077 #
13) L3 AR-1232-3	4.780	4.939	937883	6838309	4.095	90.566 #
14) L3 AR-1232-4	4.960	5.027	30889924	2800156	270.261	42.434 #
15) L3 AR-1232-5	5.022	5.193	27286900	19339910	371.755	260.435 #
16) L4 AR-1242-1	4.765	4.739	1062280	1115334	3.668	5.753 #
17) L4 AR-1242-2	4.780	4.757	937883	624097	2.202	2.203
18) L4 AR-1242-3	4.839	4.939	3090948	6838309	11.294	46.942 #
19) L4 AR-1242-4	4.960	5.015	30889924	3653208	137.095	25.756 #
20) L4 AR-1242-5	5.587	5.527	126.7E6	11388099	598.795	62.664 #
21) L5 AR-1248-1	4.765	4.745	1062280	608873	4.682	3.944
22) L5 AR-1248-2	5.022	4.994	27286900	9154358	88.500	44.489 #
23) L5 AR-1248-3	5.228	5.027	78387818	2800156	192.448	13.036 #
24) L5 AR-1248-4	5.554	5.193	38232149	19339910	66.243	74.750
25) L5 AR-1248-5	5.630	5.562	52719399	53862846	135.072	214.979 #
26) L6 AR-1254-1	5.554	5.527	38232149	11388099	62.155	29.877 #
27) L6 AR-1254-2	5.736	5.707	89019805	27192700	166.179	81.952 #
28) L6 AR-1254-3	6.136	6.104	26400269	34142526	31.445	70.829 #
29) L6 AR-1254-4	6.364	6.330	4317510	2705964	8.976	10.380
30) L6 AR-1254-5	6.765	6.730	4453.6E6	2182.9E6	5754.457	6125.565
31) L7 AR-1260-1	6.257	6.245	1777243	5070522	3.546	18.073 #
32) L7 AR-1260-2	6.441	6.409	14842432	5764235	20.108	16.954
34) L7 AR-1260-4	7.067	7.044	3325235	2099685	7.640	10.465 #
35) L7 AR-1260-5	7.299	7.264	6198593	2337649	4.910	5.221
36) L8 AR-1262-1	6.844f	6.730f	4481962	2182.9E6	4.387	5359.125 #
37) L8 AR-1262-2	7.320	7.264	2768149	2337649	1.689	4.561 #
38) L8 AR-1262-3	7.606	7.560	16874030	9862834	26.285	54.939 #
39) L8 AR-1262-4	7.673	7.560f	1264500	9862834	1.180	33.902 #
40) L8 AR-1262-5	8.172	8.107	4470366	-58662	9.975	N.D. #
41) L9 AR-1268-1	7.606	7.560	16874030	9862834	9.183	20.069 #
42) L9 AR-1268-2	7.673	7.560f	1264500	9862834	0.812	23.641 #

Data Path : Z:\pestpcbsrv\HPCHEM1\ECD_0\Data\P0071025\
 Data File : PO112186.D
 Signal(s) : Signal #1: ECD1A.ch Signal #2: ECD2B.ch
 Acq On : 10 Jul 2025 11:27
 Operator : YP/AJ
 Sample : DDT ANALOGUE
 Misc :
 ALS Vial : 7 Sample Multiplier: 1

Instrument :
 ECD_0
 ClientSampleId :
 DDT ANALOGUE

Integration File signal 1: autoint1.e
 Integration File signal 2: autoint2.e
 Quant Time: Jul 10 15:41:58 2025
 Quant Method : Z:\pestpcbsrv\HPCHEM1\ECD_0\methods\P0070825.M
 Quant Title : GC EXTRACTABLES
 QLast Update : Wed Jul 09 10:50:50 2025
 Response via : Initial Calibration
 Integrator: ChemStation

Volume Inj. : 2 µl
 Signal #1 Phase : ZB-MR1 Signal #2 Phase: ZB-MR2
 Signal #1 Info : 30Mx0.32mmx 0.50µ Signal #2 Info : 30M x 0.32mm x 0.25µm

	Compound	RT#1	RT#2	Resp#1	Resp#2	ng/ml	ng/ml
43)	L9 AR-1268-3	7.862	7.814	2021069	161925	1.555	0.512 #
44)	L9 AR-1268-4	8.172	8.107	4470366	-58662	9.305	N.D. #
45)	L9 AR-1268-5	8.441	8.391	2865532	154061	0.878	0.212 #

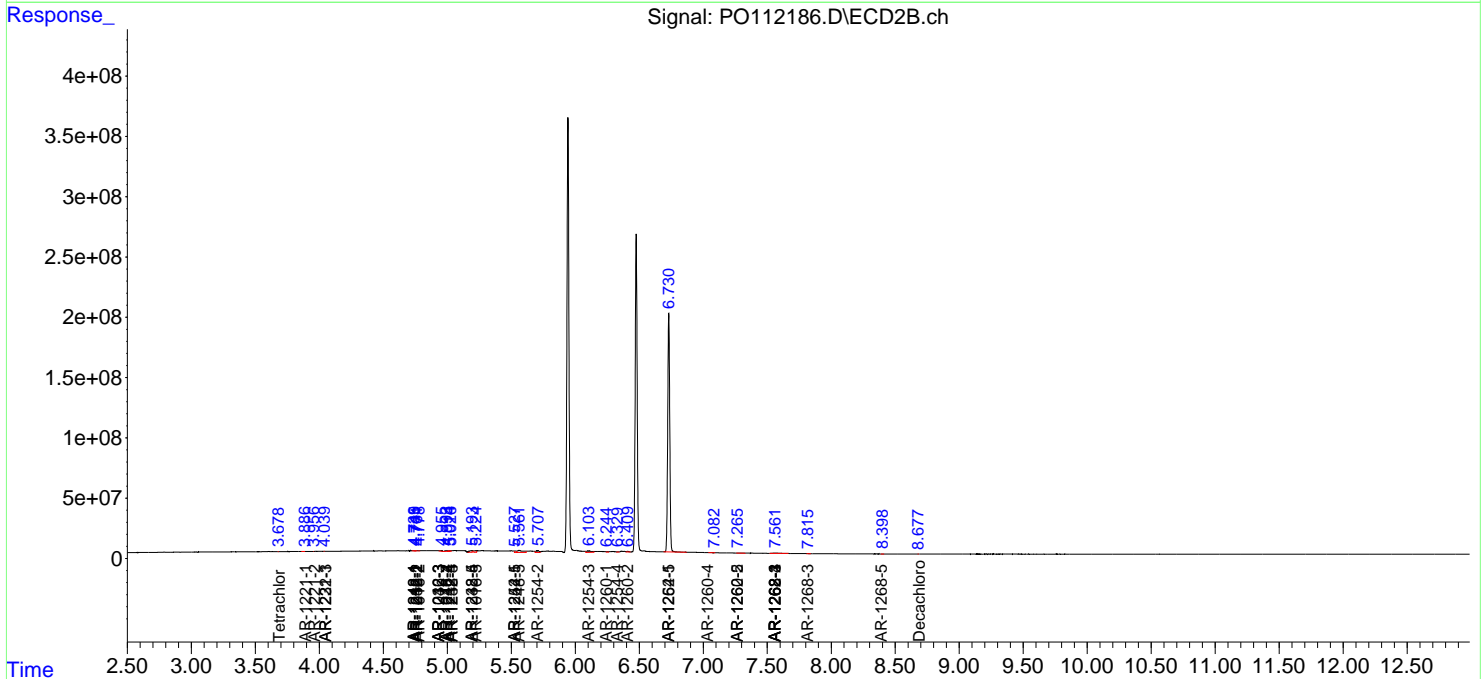
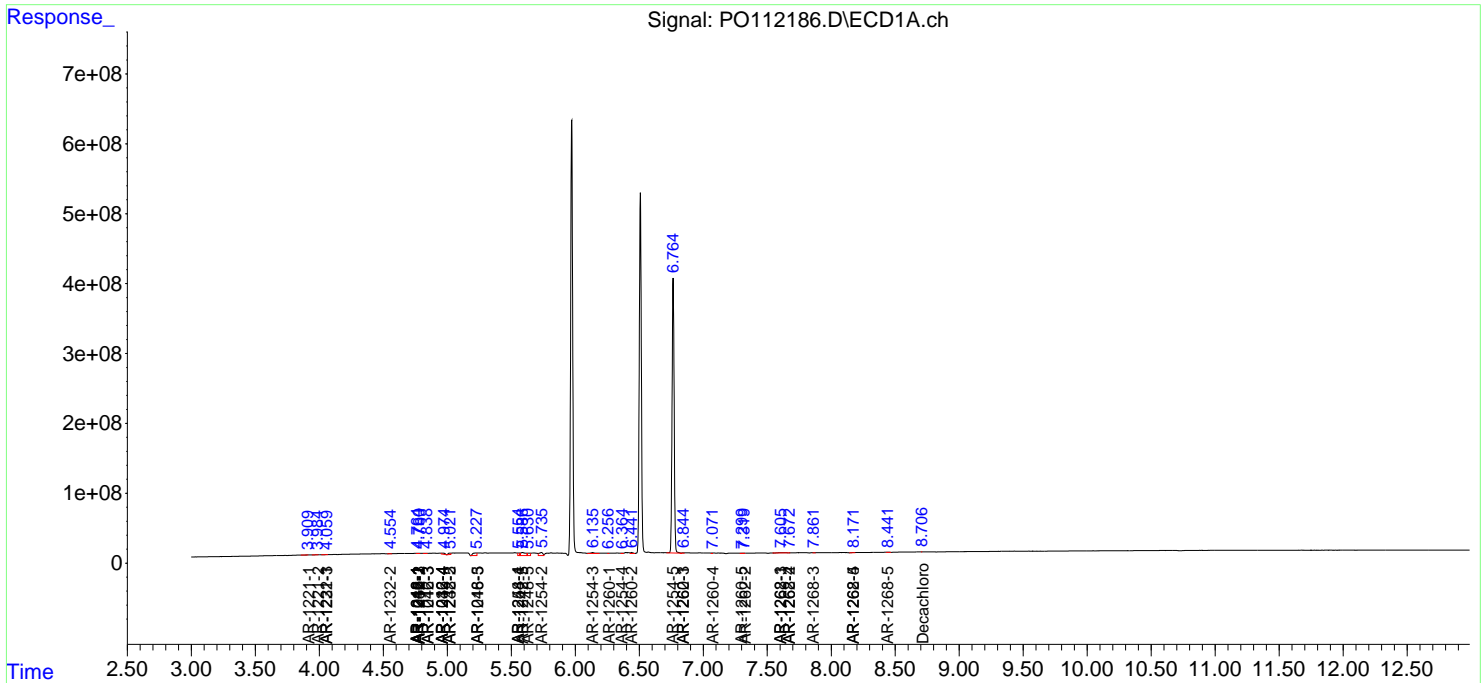
(f)=RT Delta > 1/2 Window (#)=Amounts differ by > 25% (m)=manual int.

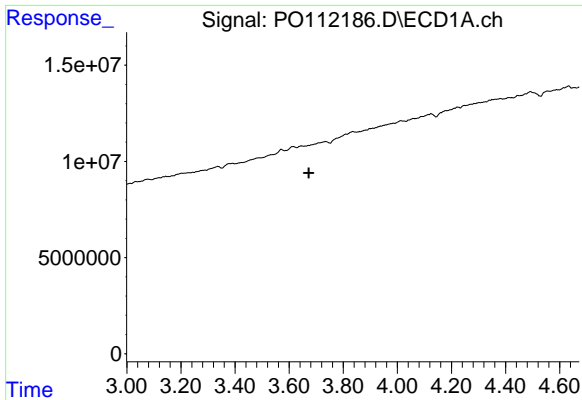
Data Path : Z:\pestpcbsrv\HPCHEM1\ECD_0\Data\PO071025\
 Data File : PO112186.D
 Signal(s) : Signal #1: ECD1A.ch Signal #2: ECD2B.ch
 Acq On : 10 Jul 2025 11:27
 Operator : YP/AJ
 Sample : DDT ANALOGUE
 Misc :
 ALS Vial : 7 Sample Multiplier: 1

Instrument :
 ECD_0
ClientSampleId :
 DDT ANALOGUE

Integration File signal 1: autoint1.e
 Integration File signal 2: autoint2.e
 Quant Time: Jul 10 15:41:58 2025
 Quant Method : Z:\pestpcbsrv\HPCHEM1\ECD_0\methods\PO070825.M
 Quant Title : GC EXTRACTABLES
 QLast Update : Wed Jul 09 10:50:50 2025
 Response via : Initial Calibration
 Integrator: ChemStation

Volume Inj. : 2 µl
 Signal #1 Phase : ZB-MR1 Signal #2 Phase: ZB-MR2
 Signal #1 Info : 30Mx0.32mmx 0.50µ Signal #2 Info : 30M x 0.32mm x 0.25µm

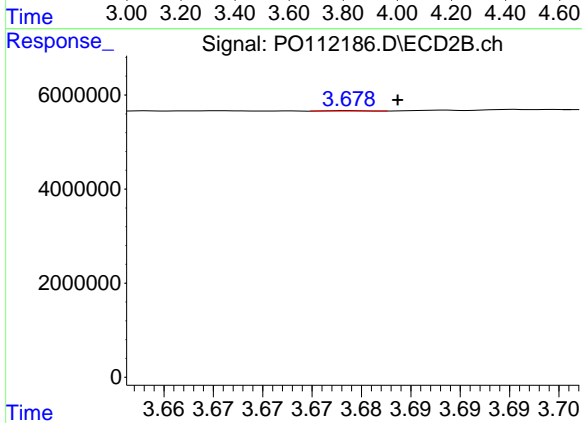




#1 Tetrachloro-m-xylene

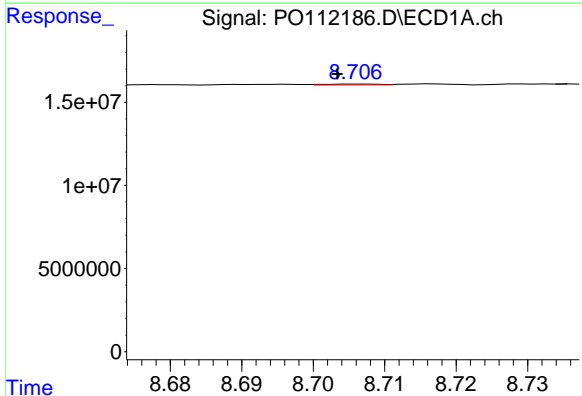
R.T.: 0.000 min
 Exp R.T.: 3.673 min
 Response: 0
 Conc: N.D.

Instrument :
 ECD_O
 ClientSampleId :
 DDT ANALOGUE



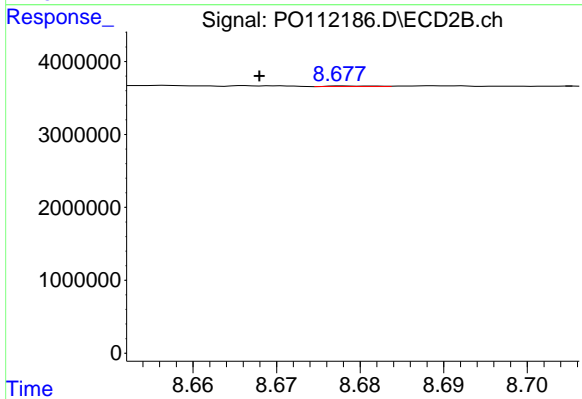
#1 Tetrachloro-m-xylene

R.T.: 3.679 min
 Delta R.T.: -0.005 min
 Response: 25592
 Conc: 0.00 ng/ml



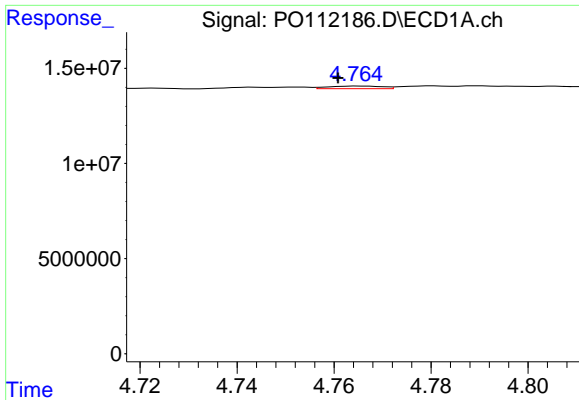
#2 Decachlorobiphenyl

R.T.: 8.707 min
 Delta R.T.: 0.003 min
 Response: 282203
 Conc: 0.04 ng/ml



#2 Decachlorobiphenyl

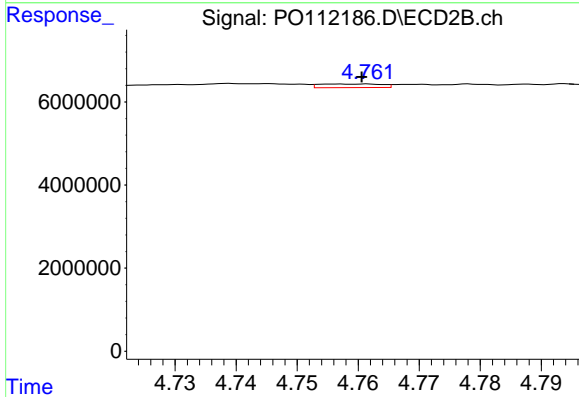
R.T.: 8.679 min
 Delta R.T.: 0.011 min
 Response: 28927
 Conc: 0.02 ng/ml



#3 AR-1016-1

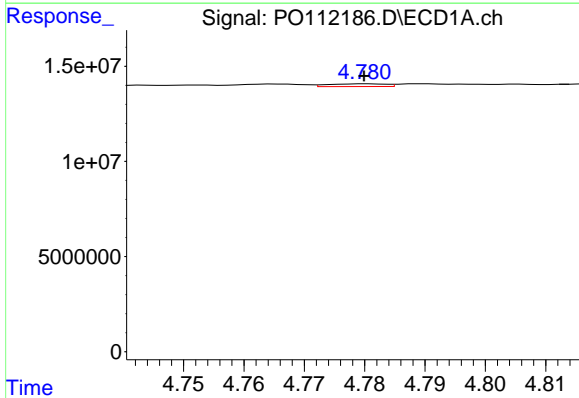
R.T.: 4.765 min
 Delta R.T.: 0.004 min
 Response: 1062280
 Conc: 3.12 ng/ml

Instrument :
 ECD_O
 ClientSampleId :
 DDT ANALOGUE



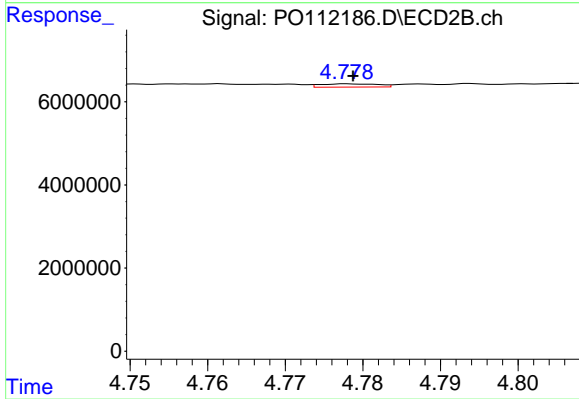
#3 AR-1016-1

R.T.: 4.757 min
 Delta R.T.: -0.004 min
 Response: 624097
 Conc: 2.80 ng/ml



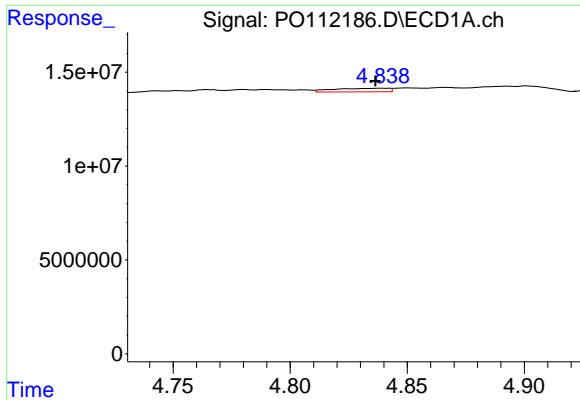
#4 AR-1016-2

R.T.: 4.780 min
 Delta R.T.: 0.000 min
 Response: 937883
 Conc: 1.89 ng/ml



#4 AR-1016-2

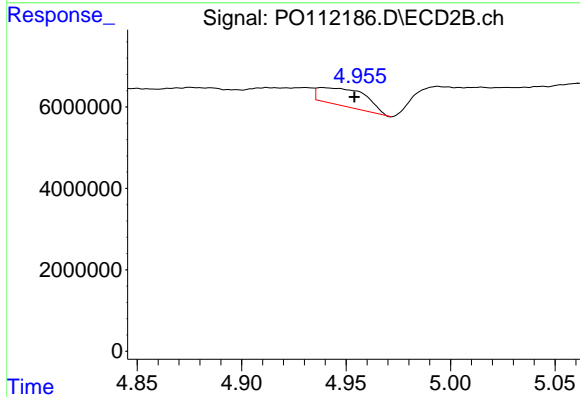
R.T.: 4.778 min
 Delta R.T.: 0.000 min
 Response: 399189
 Conc: 1.21 ng/ml



#5 AR-1016-3

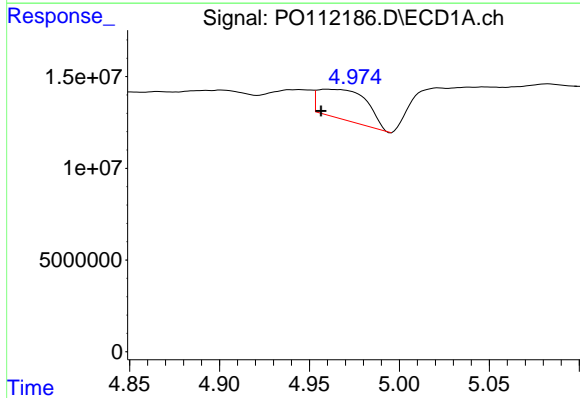
R.T.: 4.839 min
 Delta R.T.: 0.003 min
 Response: 3090948
 Conc: 9.55 ng/ml

Instrument :
 ECD_O
 ClientSampleId :
 DDT ANALOGUE



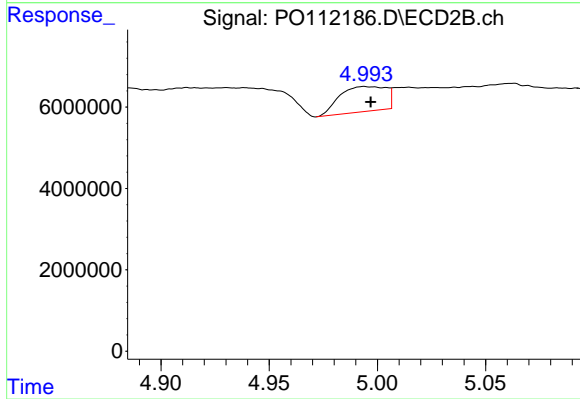
#5 AR-1016-3

R.T.: 4.939 min
 Delta R.T.: -0.015 min
 Response: 6838309
 Conc: 40.26 ng/ml



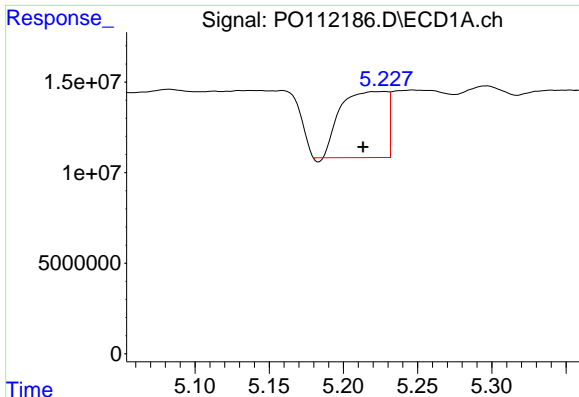
#6 AR-1016-4

R.T.: 4.960 min
 Delta R.T.: 0.004 min
 Response: 30889924
 Conc: 120.29 ng/ml



#6 AR-1016-4

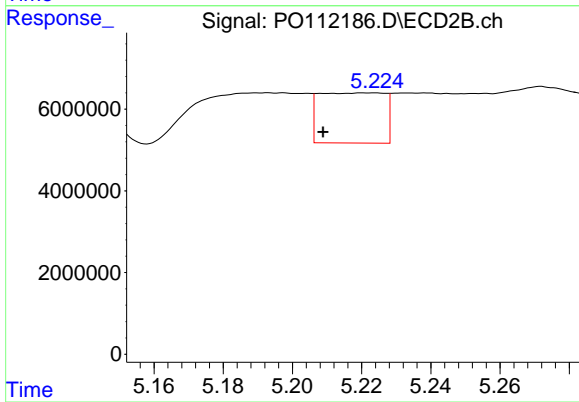
R.T.: 4.994 min
 Delta R.T.: -0.003 min
 Response: 9154358
 Conc: 66.71 ng/ml



#7 AR-1016-5

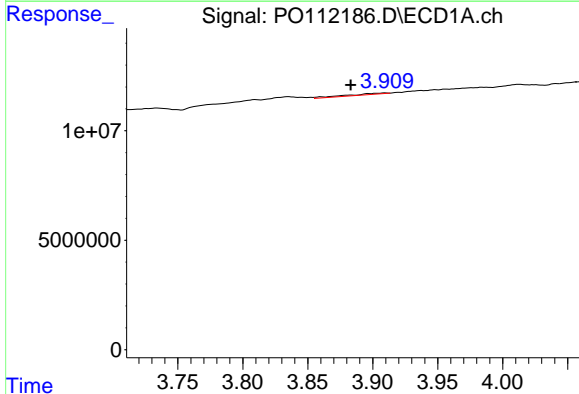
R.T.: 5.228 min
 Delta R.T.: 0.014 min
 Response: 78387818
 Conc: 286.44 ng/ml

Instrument :
 ECD_O
 ClientSampleId :
 DDT ANALOGUE



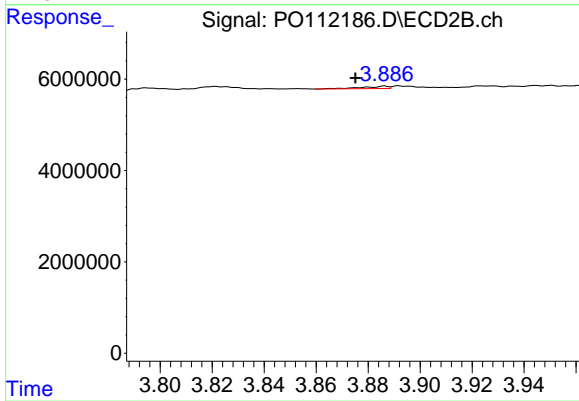
#7 AR-1016-5

R.T.: 5.223 min
 Delta R.T.: 0.014 min
 Response: 16077577
 Conc: 93.23 ng/ml



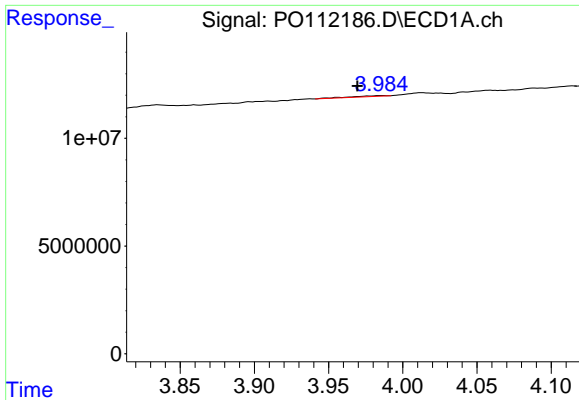
#8 AR-1221-1

R.T.: 3.910 min
 Delta R.T.: 0.027 min
 Response: 1174403
 Conc: 10.07 ng/ml



#8 AR-1221-1

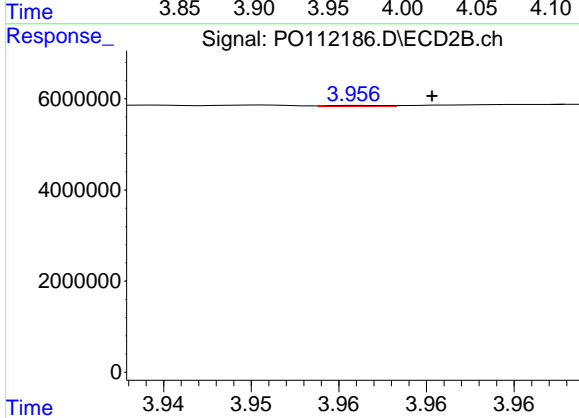
R.T.: 3.886 min
 Delta R.T.: 0.011 min
 Response: 362243
 Conc: 4.40 ng/ml



#9 AR-1221-2

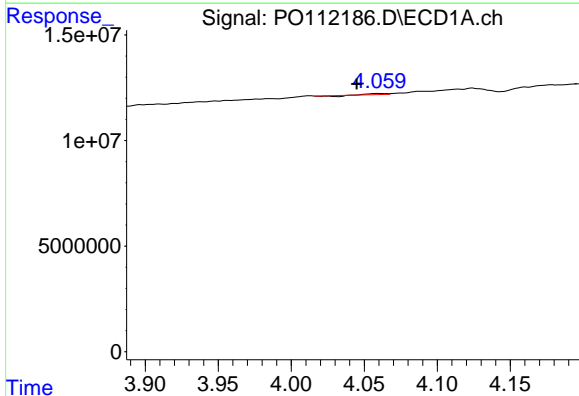
R.T.: 3.985 min
 Delta R.T.: 0.016 min
 Response: 580579
 Conc: 7.36 ng/ml

Instrument :
 ECD_O
 ClientSampleId :
 DDT ANALOGUE



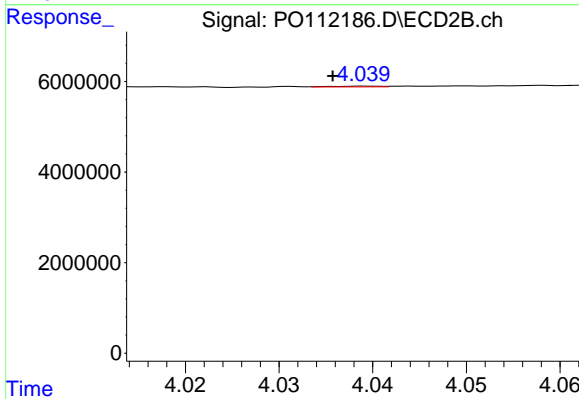
#9 AR-1221-2

R.T.: 3.956 min
 Delta R.T.: -0.004 min
 Response: 49098
 Conc: 0.83 ng/ml



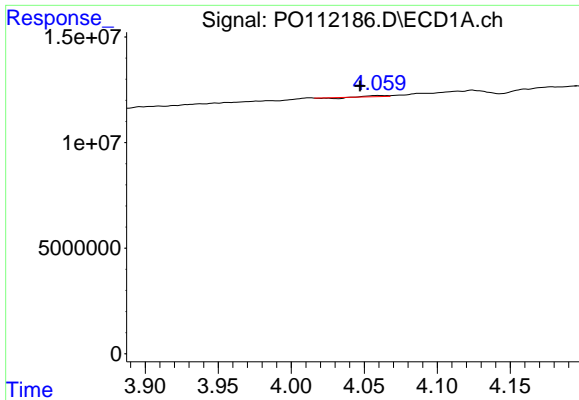
#10 AR-1221-3

R.T.: 4.059 min
 Delta R.T.: 0.014 min
 Response: 148512
 Conc: 0.55 ng/ml



#10 AR-1221-3

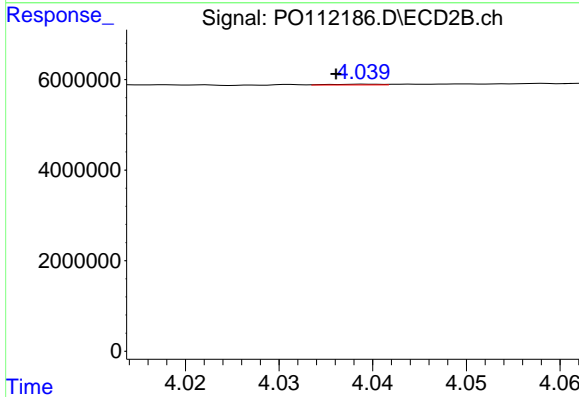
R.T.: 4.040 min
 Delta R.T.: 0.004 min
 Response: 66804
 Conc: 0.35 ng/ml



#11 AR-1232-1

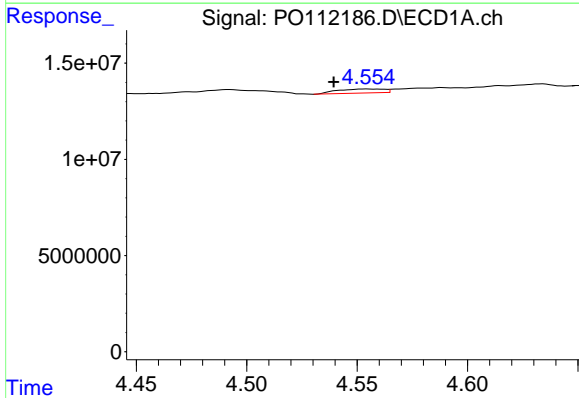
R.T.: 4.059 min
 Delta R.T.: 0.012 min
 Response: 148512
 Conc: 0.69 ng/ml

Instrument :
 ECD_O
 ClientSampleId :
 DDT ANALOGUE



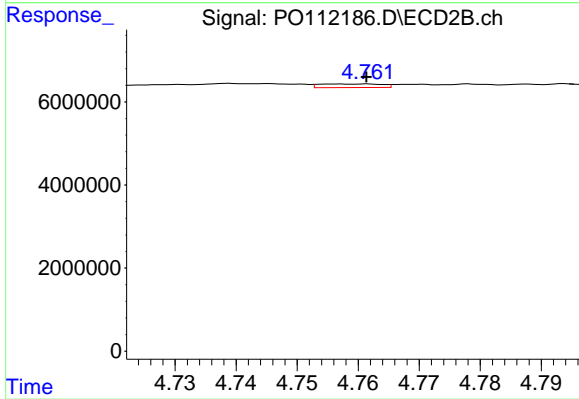
#11 AR-1232-1

R.T.: 4.040 min
 Delta R.T.: 0.003 min
 Response: 66804
 Conc: 0.45 ng/ml



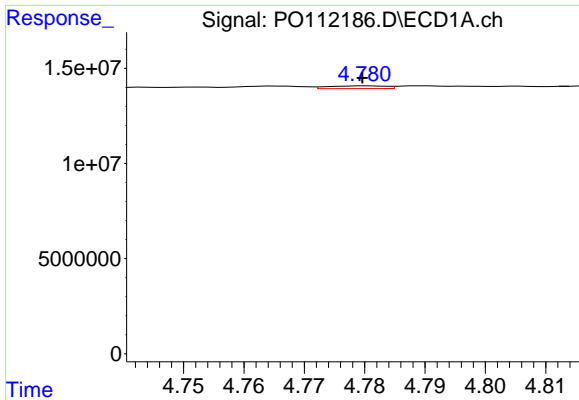
#12 AR-1232-2

R.T.: 4.555 min
 Delta R.T.: 0.015 min
 Response: 3114780
 Conc: 27.41 ng/ml



#12 AR-1232-2

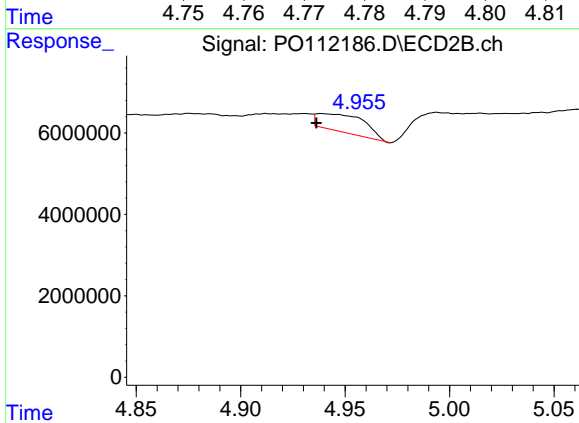
R.T.: 4.757 min
 Delta R.T.: -0.005 min
 Response: 624097
 Conc: 4.08 ng/ml



#13 AR-1232-3

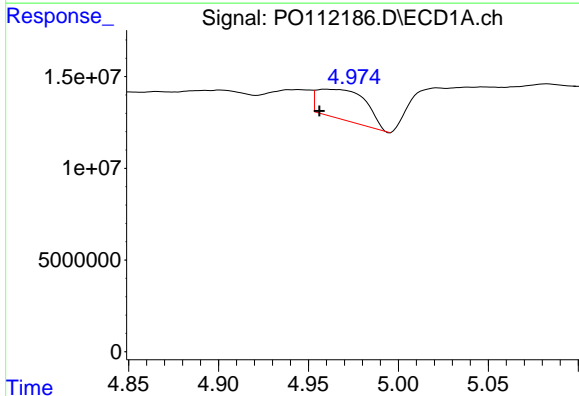
R.T.: 4.780 min
 Delta R.T.: 0.000 min
 Response: 937883
 Conc: 4.10 ng/ml

Instrument :
 ECD_O
 ClientSampleId :
 DDT ANALOGUE



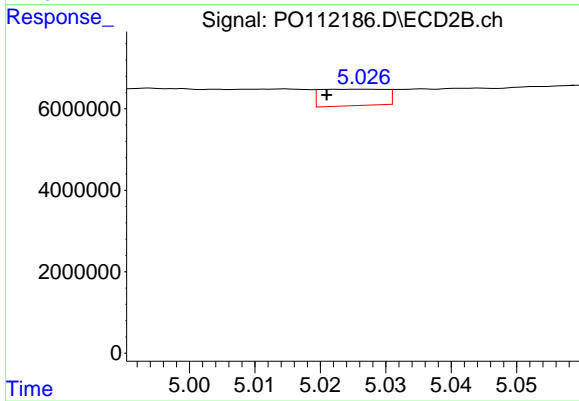
#13 AR-1232-3

R.T.: 4.939 min
 Delta R.T.: 0.002 min
 Response: 6838309
 Conc: 90.57 ng/ml



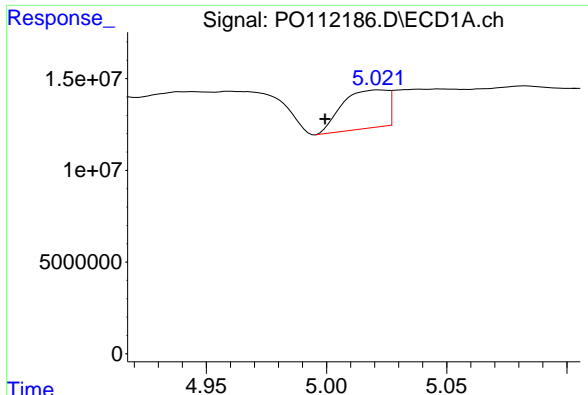
#14 AR-1232-4

R.T.: 4.960 min
 Delta R.T.: 0.004 min
 Response: 30889924
 Conc: 270.26 ng/ml



#14 AR-1232-4

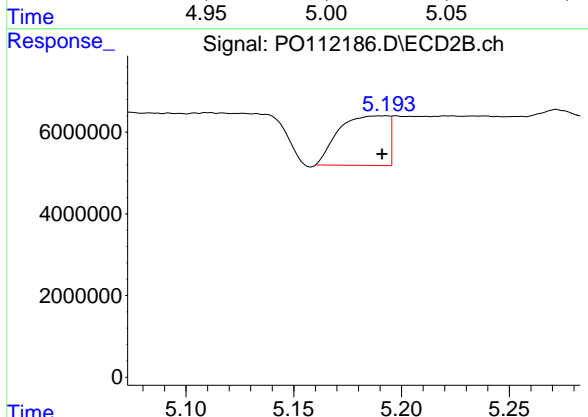
R.T.: 5.027 min
 Delta R.T.: 0.006 min
 Response: 2800156
 Conc: 42.43 ng/ml



#15 AR-1232-5

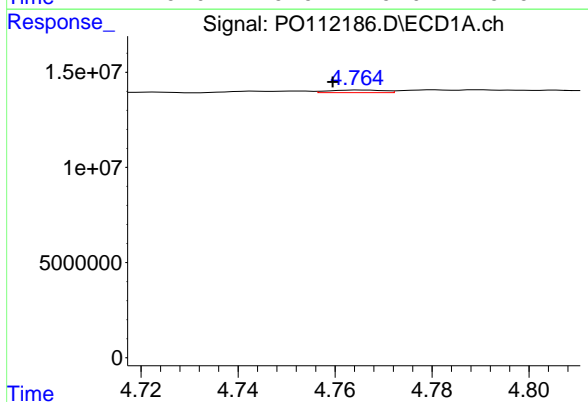
R.T.: 5.022 min
 Delta R.T.: 0.023 min
 Response: 27286900
 Conc: 371.75 ng/ml

Instrument :
 ECD_O
 ClientSampleId :
 DDT ANALOGUE



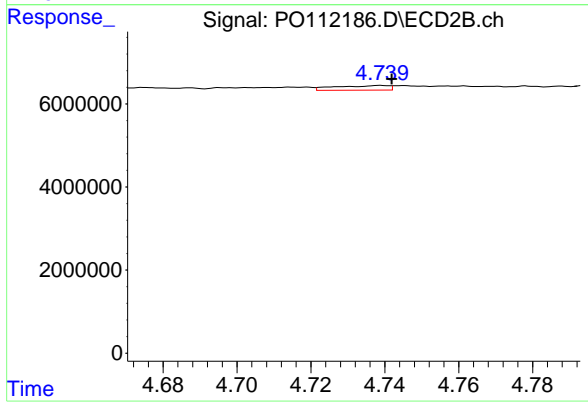
#15 AR-1232-5

R.T.: 5.193 min
 Delta R.T.: 0.002 min
 Response: 19339910
 Conc: 260.44 ng/ml



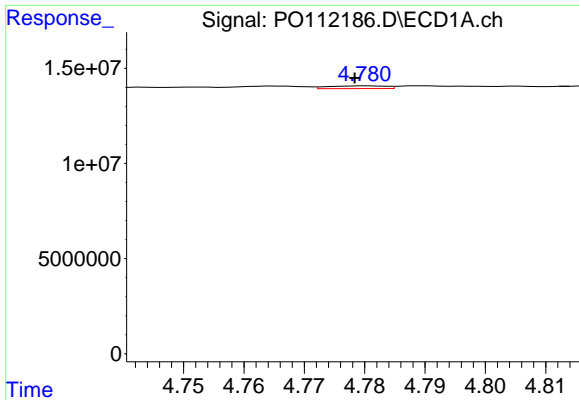
#16 AR-1242-1

R.T.: 4.765 min
 Delta R.T.: 0.006 min
 Response: 1062280
 Conc: 3.67 ng/ml



#16 AR-1242-1

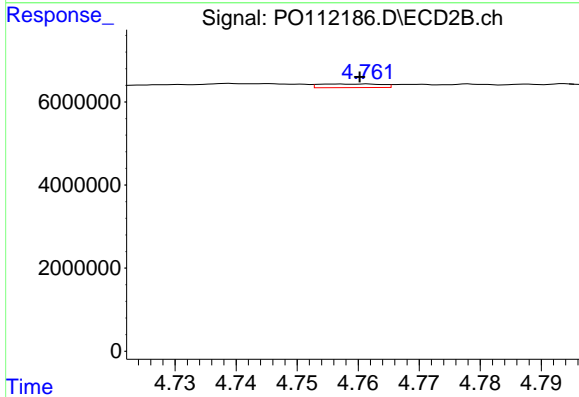
R.T.: 4.739 min
 Delta R.T.: -0.003 min
 Response: 1115334
 Conc: 5.75 ng/ml



#17 AR-1242-2

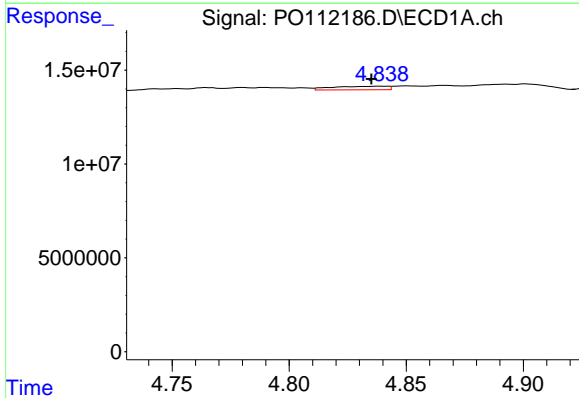
R.T.: 4.780 min
 Delta R.T.: 0.002 min
 Response: 937883
 Conc: 2.20 ng/ml

Instrument :
 ECD_O
 ClientSampleId :
 DDT ANALOGUE



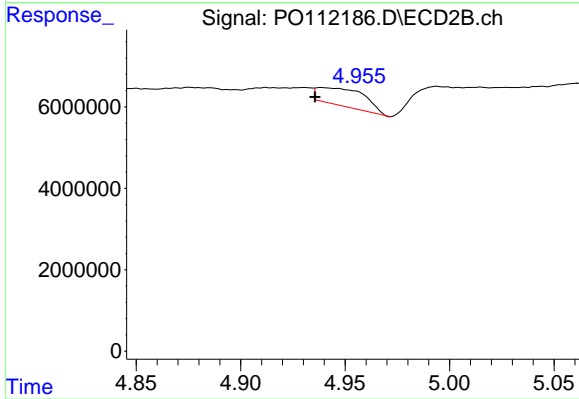
#17 AR-1242-2

R.T.: 4.757 min
 Delta R.T.: -0.004 min
 Response: 624097
 Conc: 2.20 ng/ml



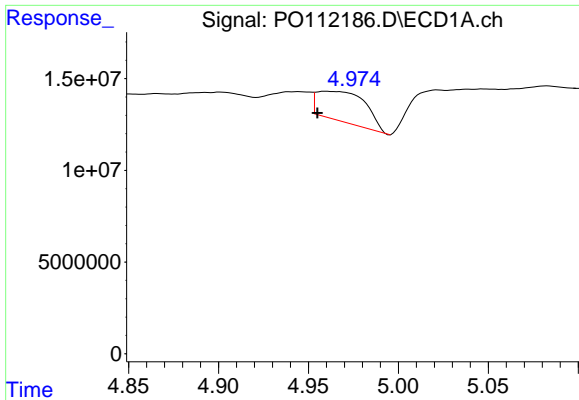
#18 AR-1242-3

R.T.: 4.839 min
 Delta R.T.: 0.004 min
 Response: 3090948
 Conc: 11.29 ng/ml



#18 AR-1242-3

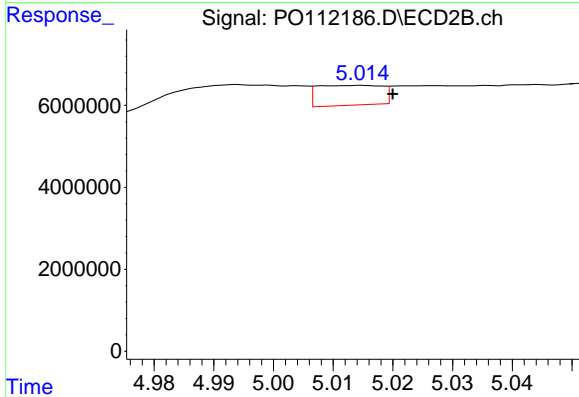
R.T.: 4.939 min
 Delta R.T.: 0.003 min
 Response: 6838309
 Conc: 46.94 ng/ml



#19 AR-1242-4

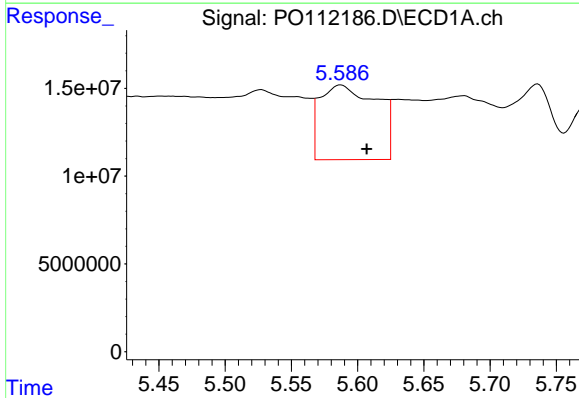
R.T.: 4.960 min
 Delta R.T.: 0.005 min
 Response: 30889924
 Conc: 137.09 ng/ml

Instrument :
 ECD_O
 ClientSampleId :
 DDT ANALOGUE



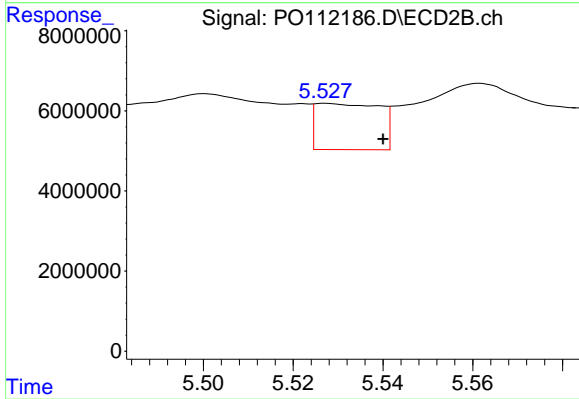
#19 AR-1242-4

R.T.: 5.015 min
 Delta R.T.: -0.005 min
 Response: 3653208
 Conc: 25.76 ng/ml



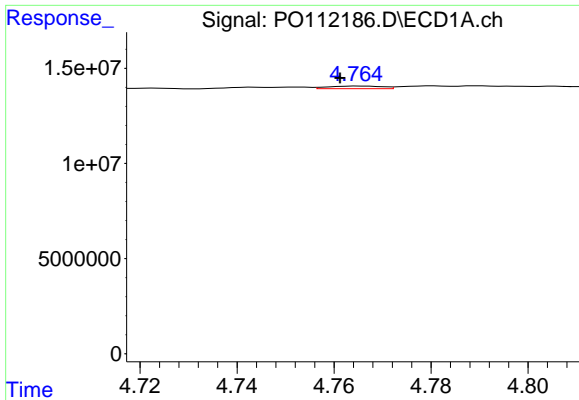
#20 AR-1242-5

R.T.: 5.587 min
 Delta R.T.: -0.020 min
 Response: 126747549
 Conc: 598.80 ng/ml



#20 AR-1242-5

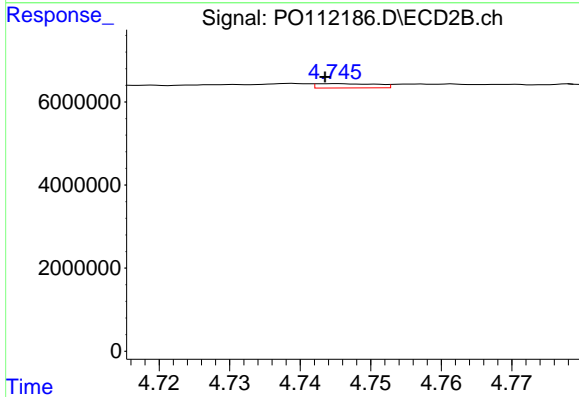
R.T.: 5.527 min
 Delta R.T.: -0.013 min
 Response: 11388099
 Conc: 62.66 ng/ml



#21 AR-1248-1

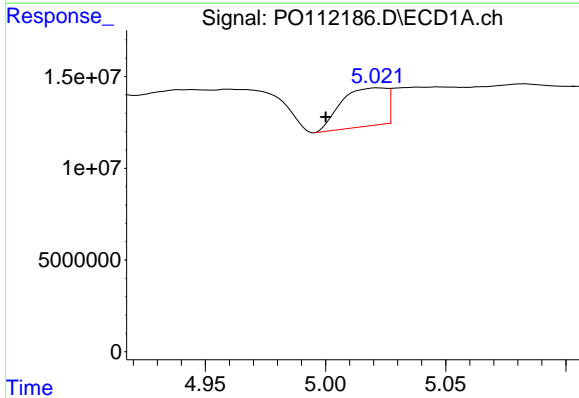
R.T.: 4.765 min
 Delta R.T.: 0.004 min
 Response: 1062280
 Conc: 4.68 ng/ml

Instrument :
 ECD_O
 ClientSampleId :
 DDT ANALOGUE



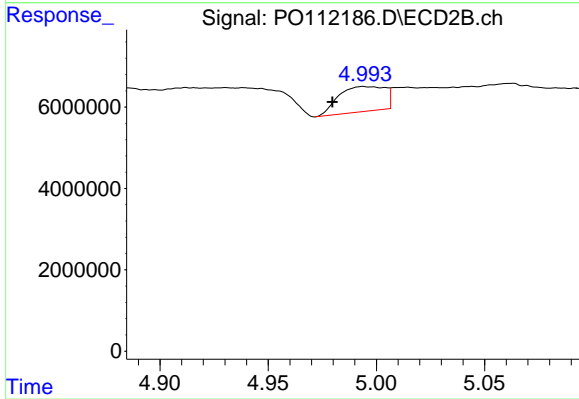
#21 AR-1248-1

R.T.: 4.745 min
 Delta R.T.: 0.002 min
 Response: 608873
 Conc: 3.94 ng/ml



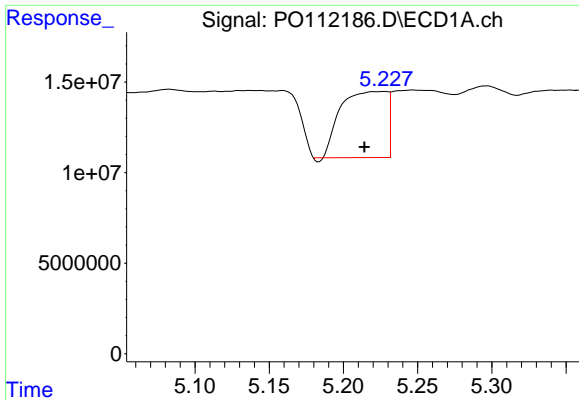
#22 AR-1248-2

R.T.: 5.022 min
 Delta R.T.: 0.022 min
 Response: 27286900
 Conc: 88.50 ng/ml



#22 AR-1248-2

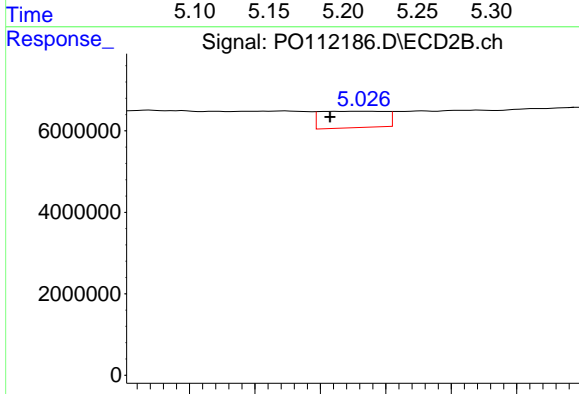
R.T.: 4.994 min
 Delta R.T.: 0.014 min
 Response: 9154358
 Conc: 44.49 ng/ml



#23 AR-1248-3

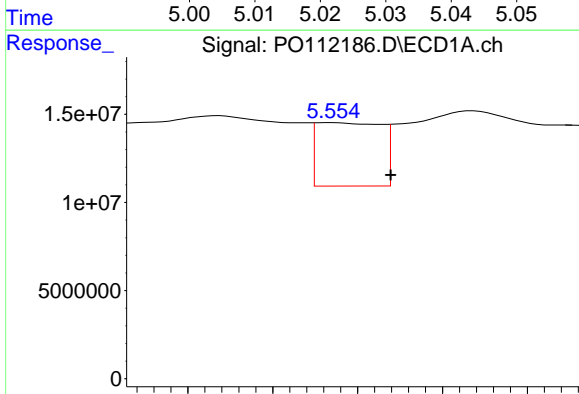
R.T.: 5.228 min
 Delta R.T.: 0.013 min
 Response: 78387818
 Conc: 192.45 ng/ml

Instrument :
 ECD_O
 ClientSampleId :
 DDT ANALOGUE



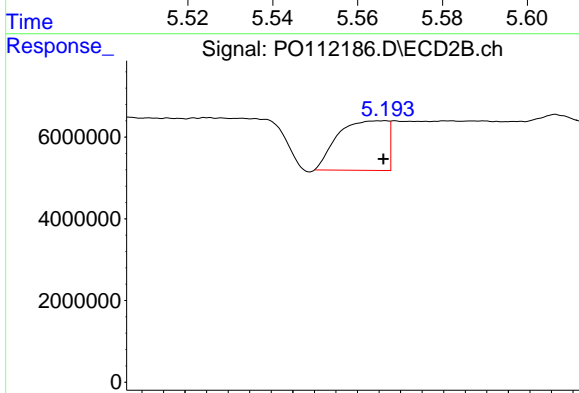
#23 AR-1248-3

R.T.: 5.027 min
 Delta R.T.: 0.005 min
 Response: 2800156
 Conc: 13.04 ng/ml



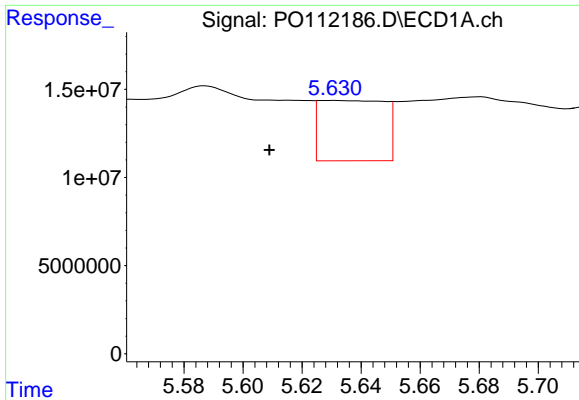
#24 AR-1248-4

R.T.: 5.554 min
 Delta R.T.: -0.014 min
 Response: 38232149
 Conc: 66.24 ng/ml



#24 AR-1248-4

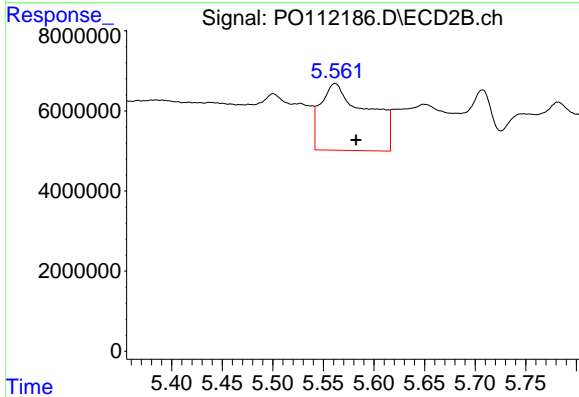
R.T.: 5.193 min
 Delta R.T.: 0.001 min
 Response: 19339910
 Conc: 74.75 ng/ml



#25 AR-1248-5

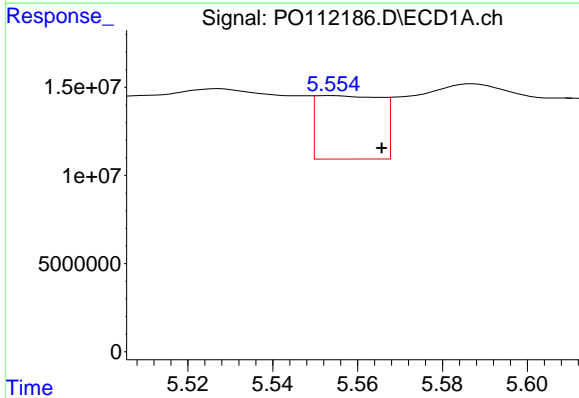
R.T.: 5.630 min
 Delta R.T.: 0.021 min
 Response: 52719399
 Conc: 135.07 ng/ml

Instrument :
 ECD_O
 ClientSampleId :
 DDT ANALOGUE



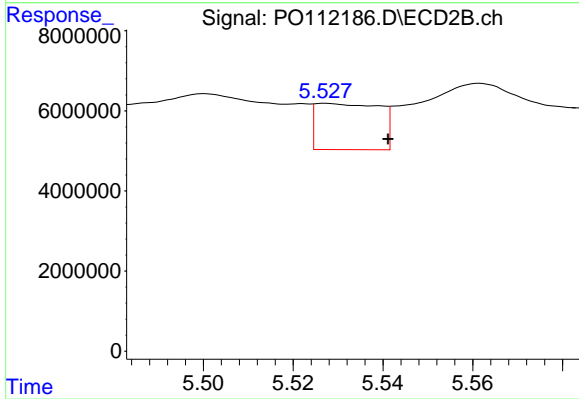
#25 AR-1248-5

R.T.: 5.562 min
 Delta R.T.: -0.021 min
 Response: 53862846
 Conc: 214.98 ng/ml



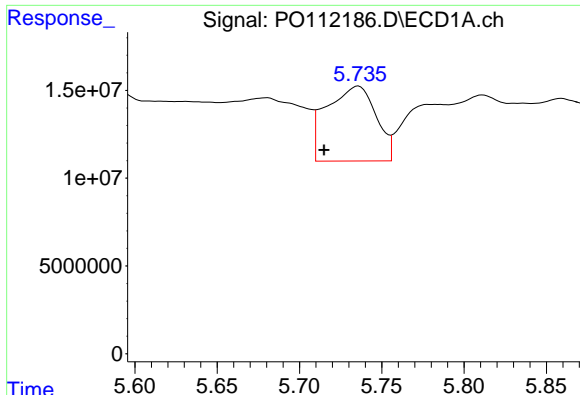
#26 AR-1254-1

R.T.: 5.554 min
 Delta R.T.: -0.012 min
 Response: 38232149
 Conc: 62.15 ng/ml



#26 AR-1254-1

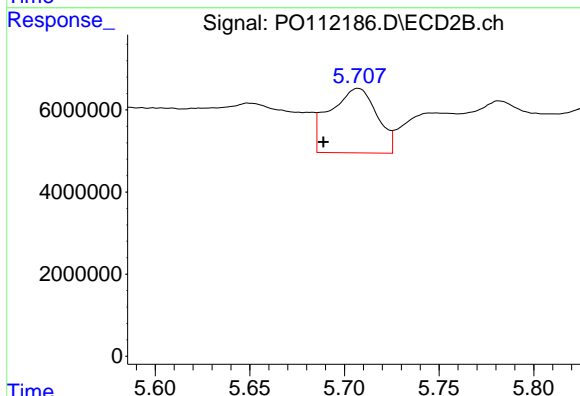
R.T.: 5.527 min
 Delta R.T.: -0.014 min
 Response: 11388099
 Conc: 29.88 ng/ml



#27 AR-1254-2

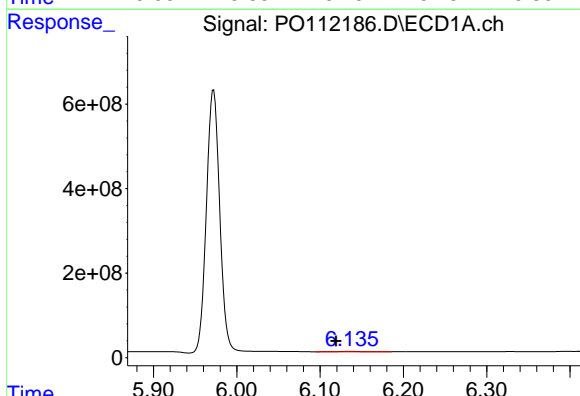
R.T.: 5.736 min
 Delta R.T.: 0.021 min
 Response: 89019805
 Conc: 166.18 ng/ml

Instrument :
 ECD_O
 ClientSampleId :
 DDT ANALOGUE



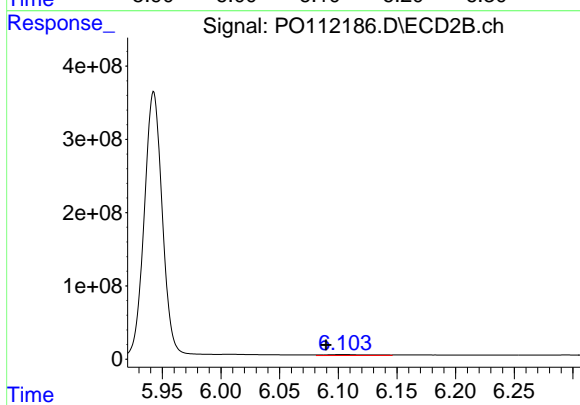
#27 AR-1254-2

R.T.: 5.707 min
 Delta R.T.: 0.018 min
 Response: 27192700
 Conc: 81.95 ng/ml



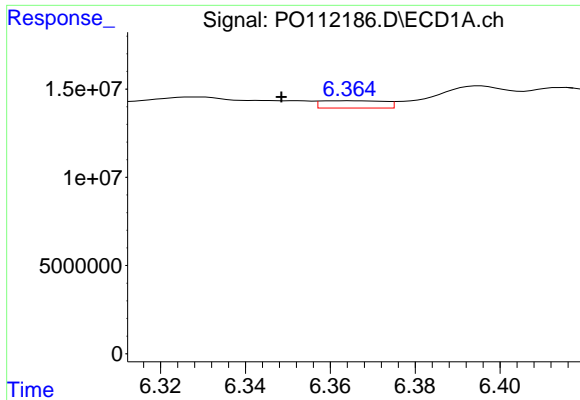
#28 AR-1254-3

R.T.: 6.136 min
 Delta R.T.: 0.017 min
 Response: 26400269
 Conc: 31.44 ng/ml



#28 AR-1254-3

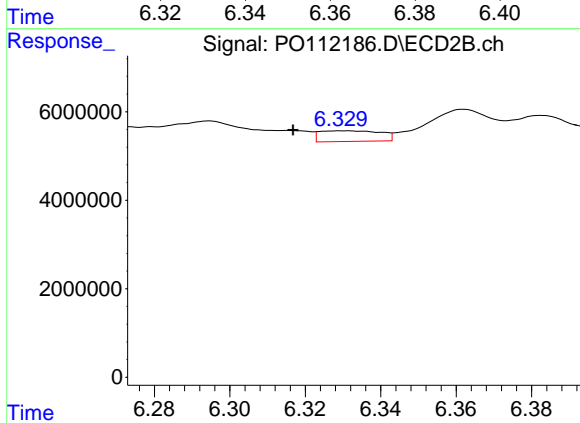
R.T.: 6.104 min
 Delta R.T.: 0.014 min
 Response: 34142526
 Conc: 70.83 ng/ml



#29 AR-1254-4

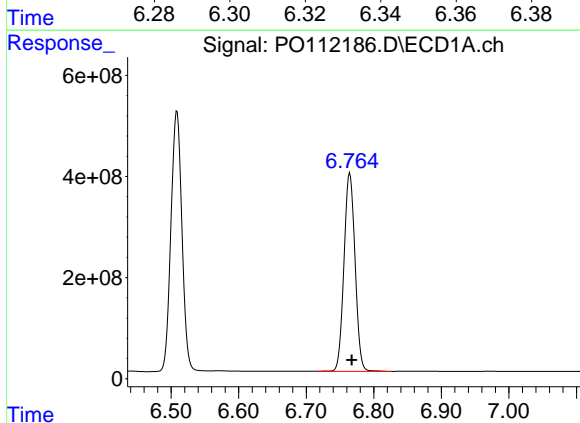
R.T.: 6.364 min
 Delta R.T.: 0.016 min
 Response: 4317510
 Conc: 8.98 ng/ml

Instrument :
 ECD_O
 ClientSampleId :
 DDT ANALOGUE



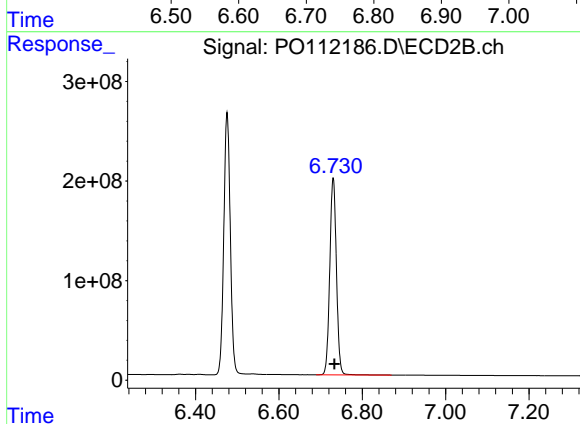
#29 AR-1254-4

R.T.: 6.330 min
 Delta R.T.: 0.014 min
 Response: 2705964
 Conc: 10.38 ng/ml



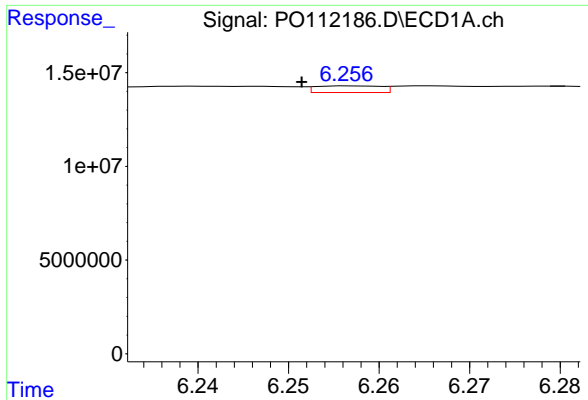
#30 AR-1254-5

R.T.: 6.765 min
 Delta R.T.: -0.003 min
 Response: 4453649390
 Conc: 5754.46 ng/ml



#30 AR-1254-5

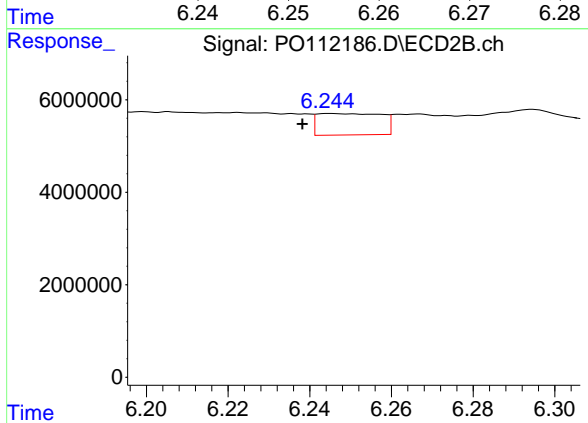
R.T.: 6.730 min
 Delta R.T.: -0.003 min
 Response: 2182883213
 Conc: 6125.57 ng/ml



#31 AR-1260-1

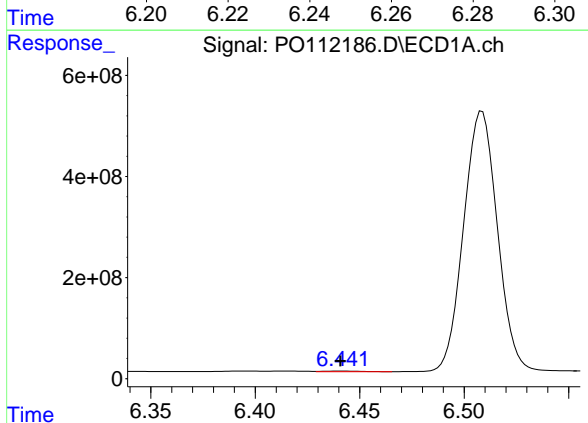
R.T.: 6.257 min
 Delta R.T.: 0.006 min
 Response: 1777243
 Conc: 3.55 ng/ml

Instrument :
 ECD_O
 ClientSampleId :
 DDT ANALOGUE



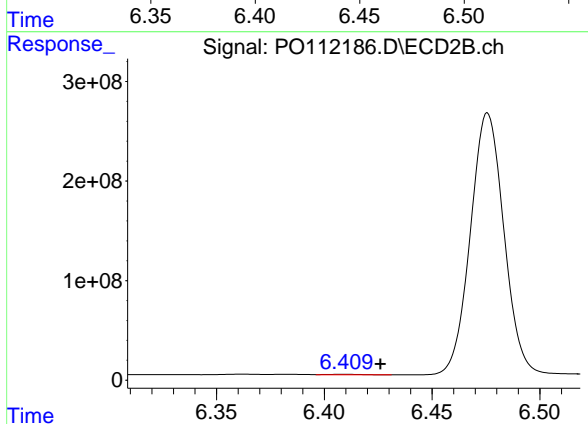
#31 AR-1260-1

R.T.: 6.245 min
 Delta R.T.: 0.007 min
 Response: 5070522
 Conc: 18.07 ng/ml



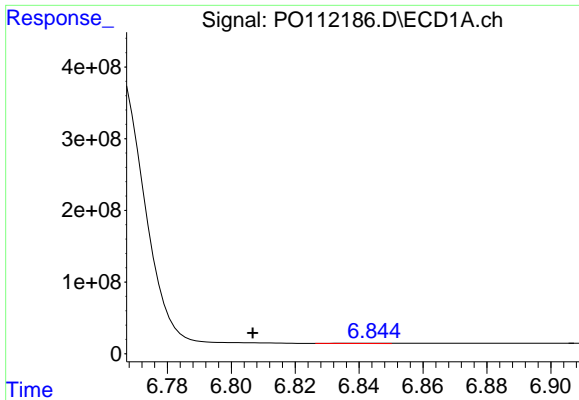
#32 AR-1260-2

R.T.: 6.441 min
 Delta R.T.: 0.000 min
 Response: 14842432
 Conc: 20.11 ng/ml



#32 AR-1260-2

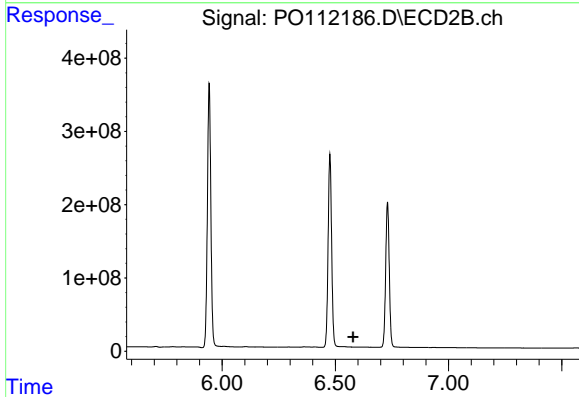
R.T.: 6.409 min
 Delta R.T.: -0.017 min
 Response: 5764235
 Conc: 16.95 ng/ml



#33 AR-1260-3

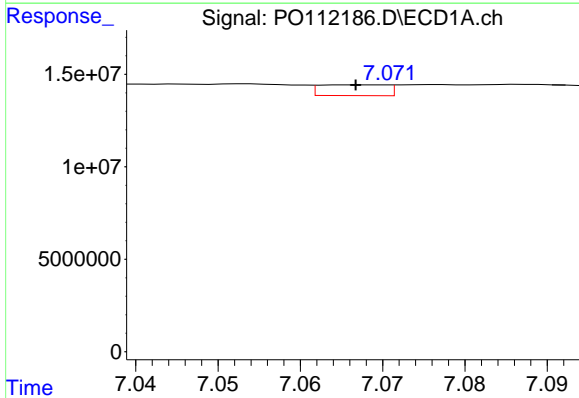
R.T.: 6.844 min
 Delta R.T.: 0.038 min
 Response: 4481962
 Conc: 6.84 ng/ml

Instrument :
 ECD_O
 ClientSampleId :
 DDT ANALOGUE



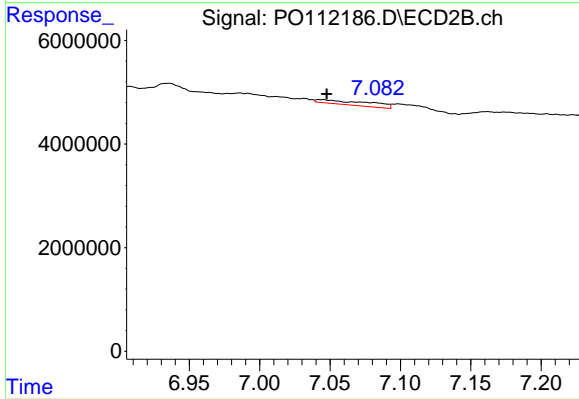
#33 AR-1260-3

R.T.: 6.537 min
 Delta R.T.: -0.041 min
 Response: -5456074
 Conc: N.D.



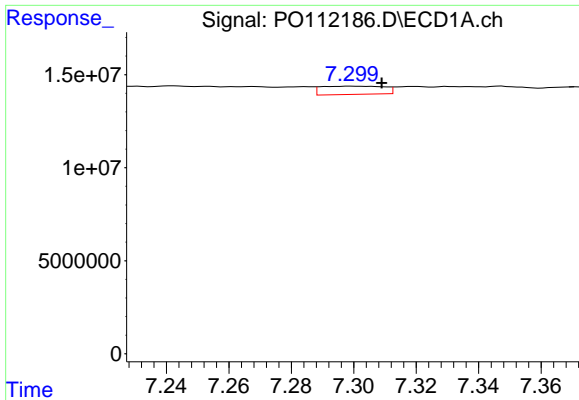
#34 AR-1260-4

R.T.: 7.067 min
 Delta R.T.: 0.000 min
 Response: 3325235
 Conc: 7.64 ng/ml



#34 AR-1260-4

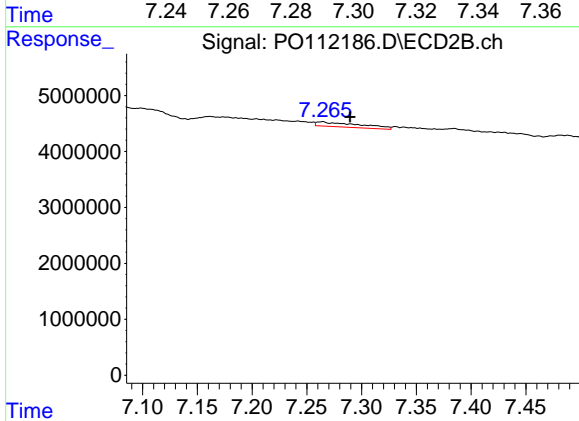
R.T.: 7.044 min
 Delta R.T.: -0.003 min
 Response: 2099685
 Conc: 10.46 ng/ml



#35 AR-1260-5

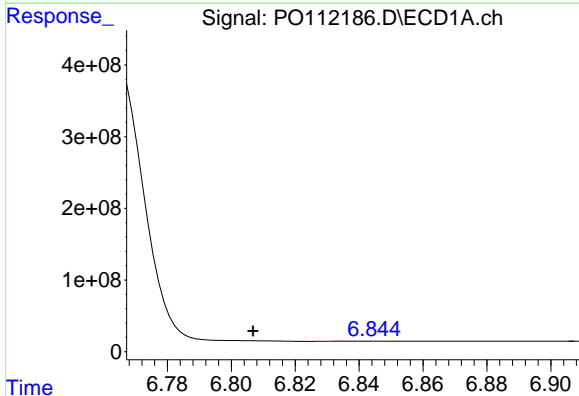
R.T.: 7.299 min
 Delta R.T.: -0.010 min
 Response: 6198593
 Conc: 4.91 ng/ml

Instrument :
 ECD_O
 ClientSampleId :
 DDT ANALOGUE



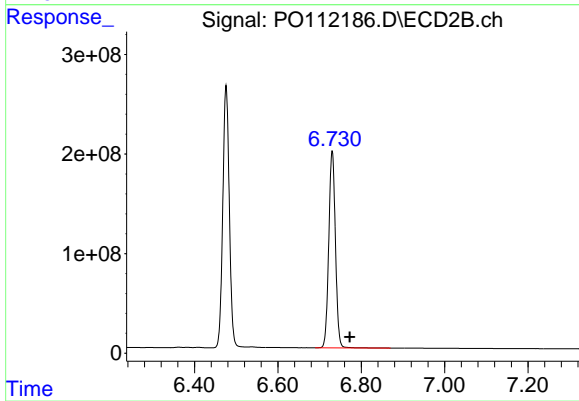
#35 AR-1260-5

R.T.: 7.264 min
 Delta R.T.: -0.025 min
 Response: 2337649
 Conc: 5.22 ng/ml



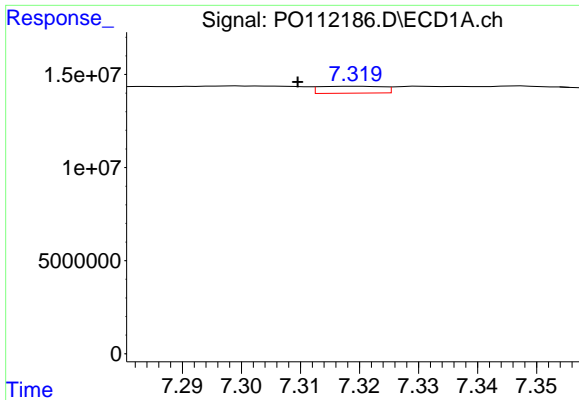
#36 AR-1262-1

R.T.: 6.844 min
 Delta R.T.: 0.038 min
 Response: 4481962
 Conc: 4.39 ng/ml



#36 AR-1262-1

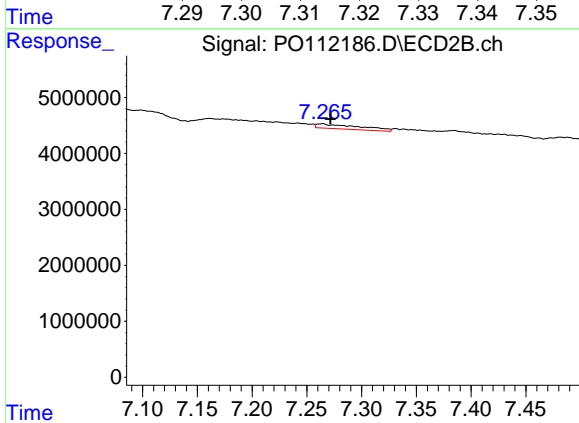
R.T.: 6.730 min
 Delta R.T.: -0.042 min
 Response: 2182883213
 Conc: 5359.12 ng/ml



#37 AR-1262-2

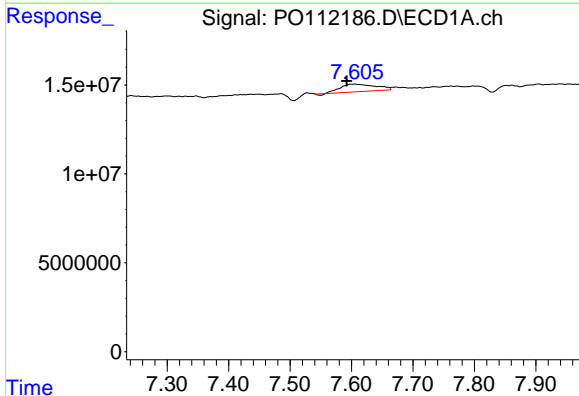
R.T.: 7.320 min
 Delta R.T.: 0.010 min
 Response: 2768149
 Conc: 1.69 ng/ml

Instrument :
 ECD_O
 ClientSampleId :
 DDT ANALOGUE



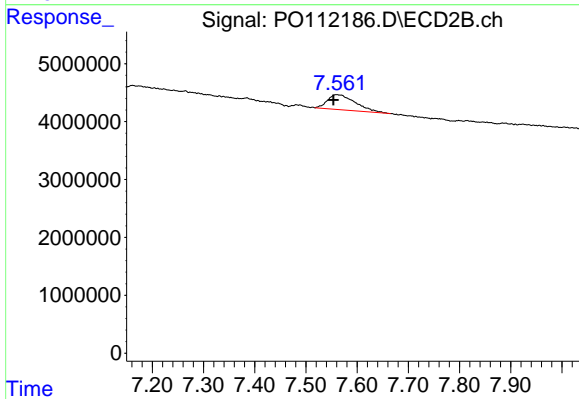
#37 AR-1262-2

R.T.: 7.264 min
 Delta R.T.: -0.007 min
 Response: 2337649
 Conc: 4.56 ng/ml



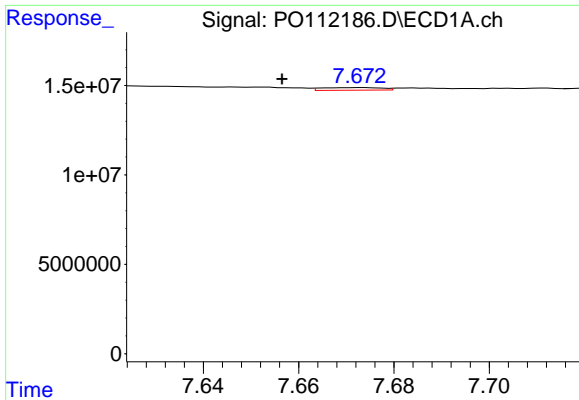
#38 AR-1262-3

R.T.: 7.606 min
 Delta R.T.: 0.014 min
 Response: 16874030
 Conc: 26.28 ng/ml



#38 AR-1262-3

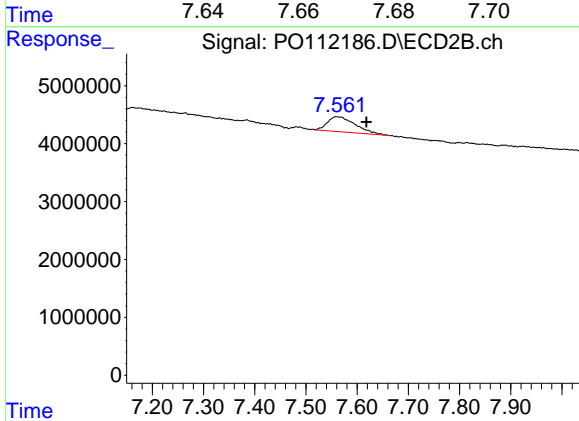
R.T.: 7.560 min
 Delta R.T.: 0.006 min
 Response: 9862834
 Conc: 54.94 ng/ml



#39 AR-1262-4

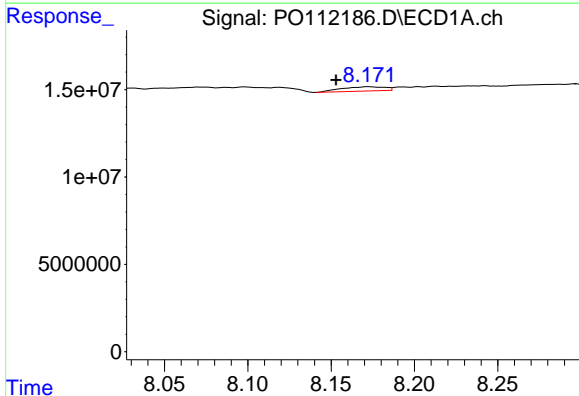
R.T.: 7.673 min
 Delta R.T.: 0.017 min
 Response: 1264500
 Conc: 1.18 ng/ml

Instrument :
 ECD_O
 ClientSampleId :
 DDT ANALOGUE



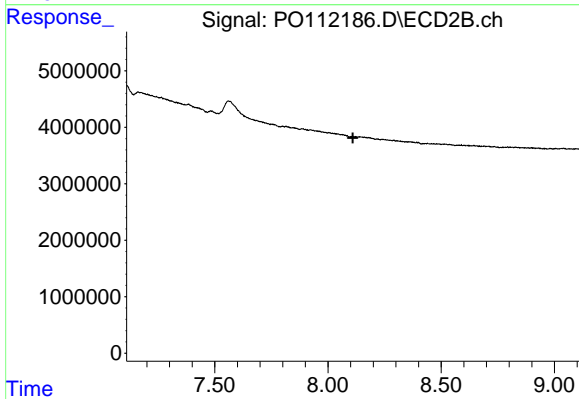
#39 AR-1262-4

R.T.: 7.560 min
 Delta R.T.: -0.058 min
 Response: 9862834
 Conc: 33.90 ng/ml



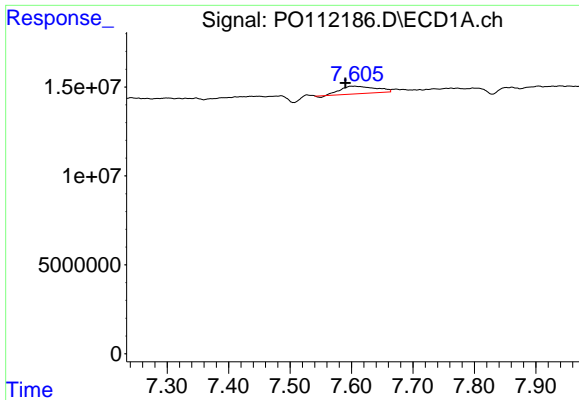
#40 AR-1262-5

R.T.: 8.172 min
 Delta R.T.: 0.019 min
 Response: 4470366
 Conc: 9.98 ng/ml



#40 AR-1262-5

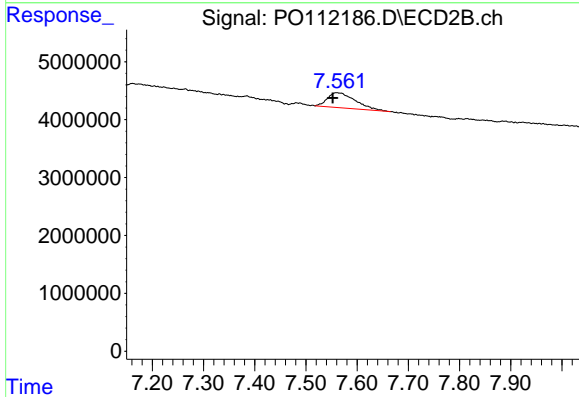
R.T.: 8.107 min
 Delta R.T.: -0.003 min
 Response: -58662
 Conc: N.D.



#41 AR-1268-1

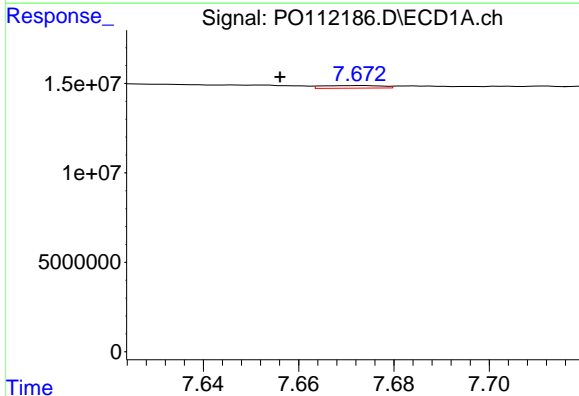
R.T.: 7.606 min
 Delta R.T.: 0.015 min
 Response: 16874030
 Conc: 9.18 ng/ml

Instrument :
 ECD_O
 ClientSampleId :
 DDT ANALOGUE



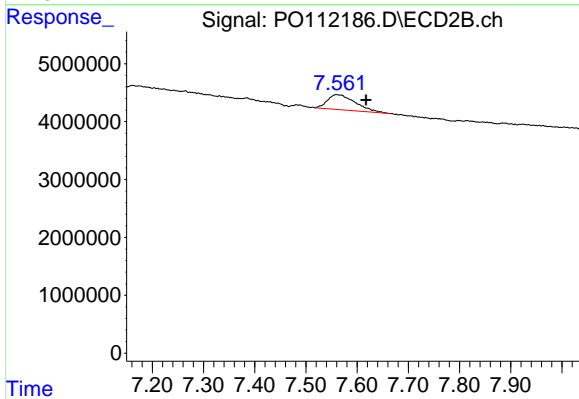
#41 AR-1268-1

R.T.: 7.560 min
 Delta R.T.: 0.008 min
 Response: 9862834
 Conc: 20.07 ng/ml



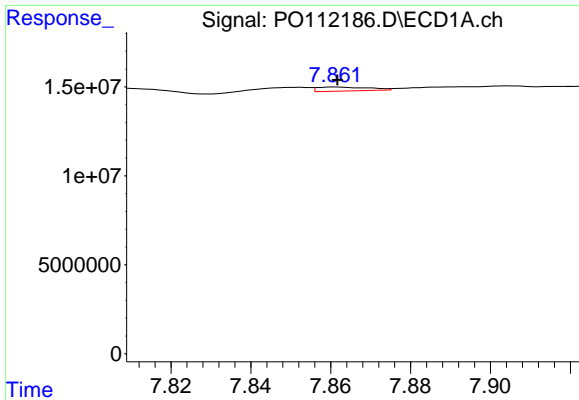
#42 AR-1268-2

R.T.: 7.673 min
 Delta R.T.: 0.017 min
 Response: 1264500
 Conc: 0.81 ng/ml



#42 AR-1268-2

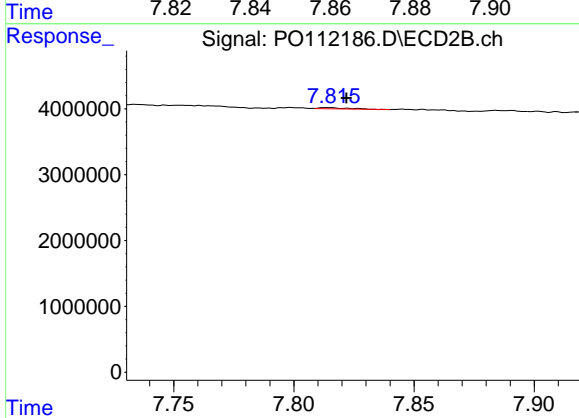
R.T.: 7.560 min
 Delta R.T.: -0.057 min
 Response: 9862834
 Conc: 23.64 ng/ml



#43 AR-1268-3

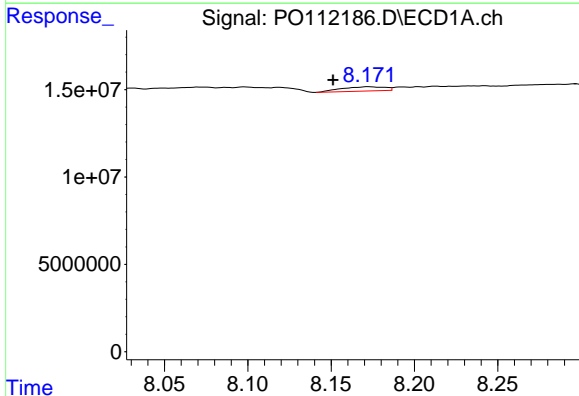
R.T.: 7.862 min
 Delta R.T.: 0.000 min
 Response: 2021069
 Conc: 1.56 ng/ml

Instrument :
 ECD_O
 ClientSampleId :
 DDT ANALOGUE



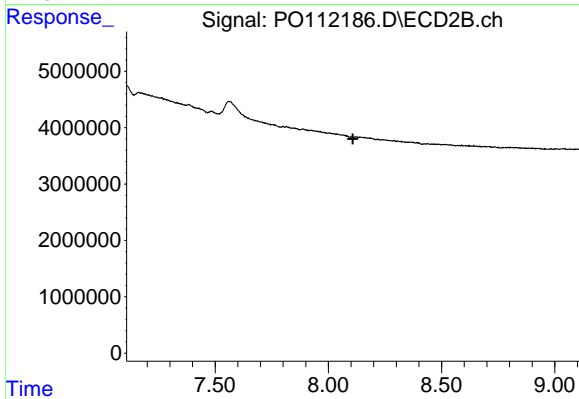
#43 AR-1268-3

R.T.: 7.814 min
 Delta R.T.: -0.007 min
 Response: 161925
 Conc: 0.51 ng/ml



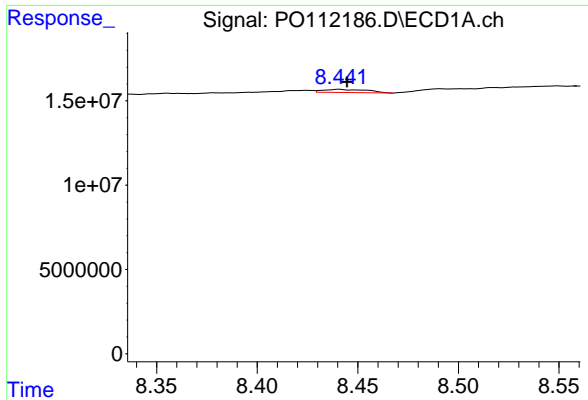
#44 AR-1268-4

R.T.: 8.172 min
 Delta R.T.: 0.021 min
 Response: 4470366
 Conc: 9.31 ng/ml



#44 AR-1268-4

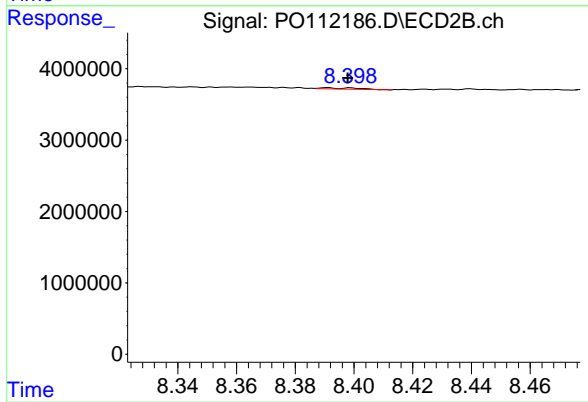
R.T.: 8.107 min
 Delta R.T.: 0.000 min
 Response: -58662
 Conc: N.D.



#45 AR-1268-5

R.T.: 8.441 min
 Delta R.T.: -0.004 min
 Response: 2865532
 Conc: 0.88 ng/ml

Instrument :
 ECD_O
 ClientSampleId :
 DDT ANALOGUE



#45 AR-1268-5

R.T.: 8.391 min
 Delta R.T.: -0.007 min
 Response: 154061
 Conc: 0.21 ng/ml