

Data Path : Z:\pestpcbsrv\HPCHEM1\ECD_0\Data\P0071025\
 Data File : PO112187.D
 Signal(s) : Signal #1: ECD1A.ch Signal #2: ECD2B.ch
 Acq On : 10 Jul 2025 12:42
 Operator : YP/AJ
 Sample : PP24709
 Misc :
 ALS Vial : 8 Sample Multiplier: 1

Instrument :
 ECD_0
 ClientSampleId :
 PP24709

Integration File signal 1: autoint1.e
 Integration File signal 2: autoint2.e
 Quant Time: Jul 10 15:42:35 2025
 Quant Method : Z:\pestpcbsrv\HPCHEM1\ECD_0\methods\P0070825.M
 Quant Title : GC EXTRACTABLES
 QLast Update : Wed Jul 09 10:50:50 2025
 Response via : Initial Calibration
 Integrator: ChemStation

Volume Inj. : 2 µl
 Signal #1 Phase : ZB-MR1 Signal #2 Phase: ZB-MR2
 Signal #1 Info : 30Mx0.32mmx 0.50µ Signal #2 Info : 30M x 0.32mm x 0.25µm

Compound	RT#1	RT#2	Resp#1	Resp#2	ng/ml	ng/ml
System Monitoring Compounds						
1) SA Tetrachlo...	3.719f	3.680	684794	24211	0.069	0.004 #
2) SA Decachlor...	8.693	8.690	245879	76840	0.036	0.045
Target Compounds						
3) L1 AR-1016-1	4.767	4.759	16054413	15193263	47.202	68.182 #
4) L1 AR-1016-2	4.785	4.791	24250075	1516003	48.764	4.607 #
5) L1 AR-1016-3	4.842	4.933	15110174	7387648	46.678	43.491
6) L1 AR-1016-4	4.962	4.977	11428150	6387052	44.502	46.544
7) L1 AR-1016-5	5.219	5.228	11927181	4080131	43.584	23.660 #
8) L2 AR-1221-1	3.891	3.872	9211118	907479	7.899	11.027 #
9) L2 AR-1221-2	3.978	3.960	1436090	1259915	18.215	21.227
10) L2 AR-1221-3	4.052	4.034	7222998	5127156	26.793	27.160
11) L3 AR-1232-1	4.052	4.034	7222998	5127156	33.647	34.158
12) L3 AR-1232-2	4.544	4.759	13580127	15193263	119.504	99.247
13) L3 AR-1232-3	4.785	4.933	24250075	7387648	105.891	97.842
14) L3 AR-1232-4	4.962	5.018	11428150	7372690	99.987	111.727
15) L3 AR-1232-5	5.005	5.188	9173889	8439705	124.984	113.651
16) L4 AR-1242-1	4.767	4.740	16054413	10578908	55.429	54.570
17) L4 AR-1242-2	4.785	4.759	24250075	15193263	56.936	53.620
18) L4 AR-1242-3	4.842	4.933	15110174	7387648	55.210	50.712
19) L4 AR-1242-4	4.962	5.018	11428150	7372690	50.720	51.979
20) L4 AR-1242-5	5.615	5.539	1826121	10648033	8.627	58.591 #
21) L5 AR-1248-1	4.767	4.740	16054413	10578908	70.756	68.530
22) L5 AR-1248-2	5.005	4.977	9173889	6387052	29.754	31.040
23) L5 AR-1248-3	5.219	5.018	11927181	7372690	29.282	34.324
24) L5 AR-1248-4	5.573	5.188	11778998	8439705	20.409	32.620 #
25) L5 AR-1248-5	5.615	5.581	1826121	4118343	4.679	16.437 #
26) L6 AR-1254-1	5.573	5.539	11778998	10648033	19.149	27.935 #
27) L6 AR-1254-2	5.723	5.687	11417847	11934318	21.314	35.967 #
28) L6 AR-1254-3	6.142	6.104	24406246	14922045	29.070	30.956
29) L6 AR-1254-4	6.358	6.316	5302850	2590096	11.024	9.935
30) L6 AR-1254-5	6.774	6.730	47712286	19390897	61.648	54.414
31) L7 AR-1260-1	6.258	6.246	29908422	943193	59.669	3.362 #
32) L7 AR-1260-2	6.447	6.407	40755471	21516453	55.214	63.284
33) L7 AR-1260-3	6.813	6.558	32931440	14392239	50.240	52.224
34) L7 AR-1260-4	7.073	7.064	28648358	1785823	65.821	8.900 #
35) L7 AR-1260-5	7.316	7.270	66669392	23349618	52.806	52.151
36) L8 AR-1262-1	6.813	6.770	32931440	13567248	32.232	33.309
37) L8 AR-1262-2	7.316	7.270	66669392	23349618	40.668	45.556
38) L8 AR-1262-3	7.600	7.552	14987936	6453073	23.347	35.945 #
39) L8 AR-1262-4	7.662	7.614	44673860	14363601	41.695	49.373
40) L8 AR-1262-5	8.162	8.109	12386641	2679944	27.640	25.334
41) L9 AR-1268-1	7.600	7.552	14987936	6453073	8.157	13.131 #

Data Path : Z:\pestpcbsrv\HPCHEM1\ECD_0\Data\P0071025\
 Data File : P0112187.D
 Signal(s) : Signal #1: ECD1A.ch Signal #2: ECD2B.ch
 Acq On : 10 Jul 2025 12:42
 Operator : YP/AJ
 Sample : PP24709
 Misc :
 ALS Vial : 8 Sample Multiplier: 1

Instrument :
 ECD_0
ClientSampleId :
 PP24709

Integration File signal 1: autoint1.e
 Integration File signal 2: autoint2.e
 Quant Time: Jul 10 15:42:35 2025
 Quant Method : Z:\pestpcbsrv\HPCHEM1\ECD_0\methods\P0070825.M
 Quant Title : GC EXTRACTABLES
 QLast Update : Wed Jul 09 10:50:50 2025
 Response via : Initial Calibration
 Integrator: ChemStation

Volume Inj. : 2 µl
 Signal #1 Phase : ZB-MR1 Signal #2 Phase: ZB-MR2
 Signal #1 Info : 30Mx0.32mmx 0.50µ Signal #2 Info : 30M x 0.32mm x 0.25µm

	Compound	RT#1	RT#2	Resp#1	Resp#2	ng/ml	ng/ml
42)	L9 AR-1268-2	7.662	7.614	44673860	14363601	28.681	34.430
43)	L9 AR-1268-3	7.872	7.818	6455489	447894	4.967	1.416 #
44)	L9 AR-1268-4	8.162	8.109	12386641	2679944	25.784	24.033
45)	L9 AR-1268-5	8.453	8.396	5841134	707747	1.790	0.974 #

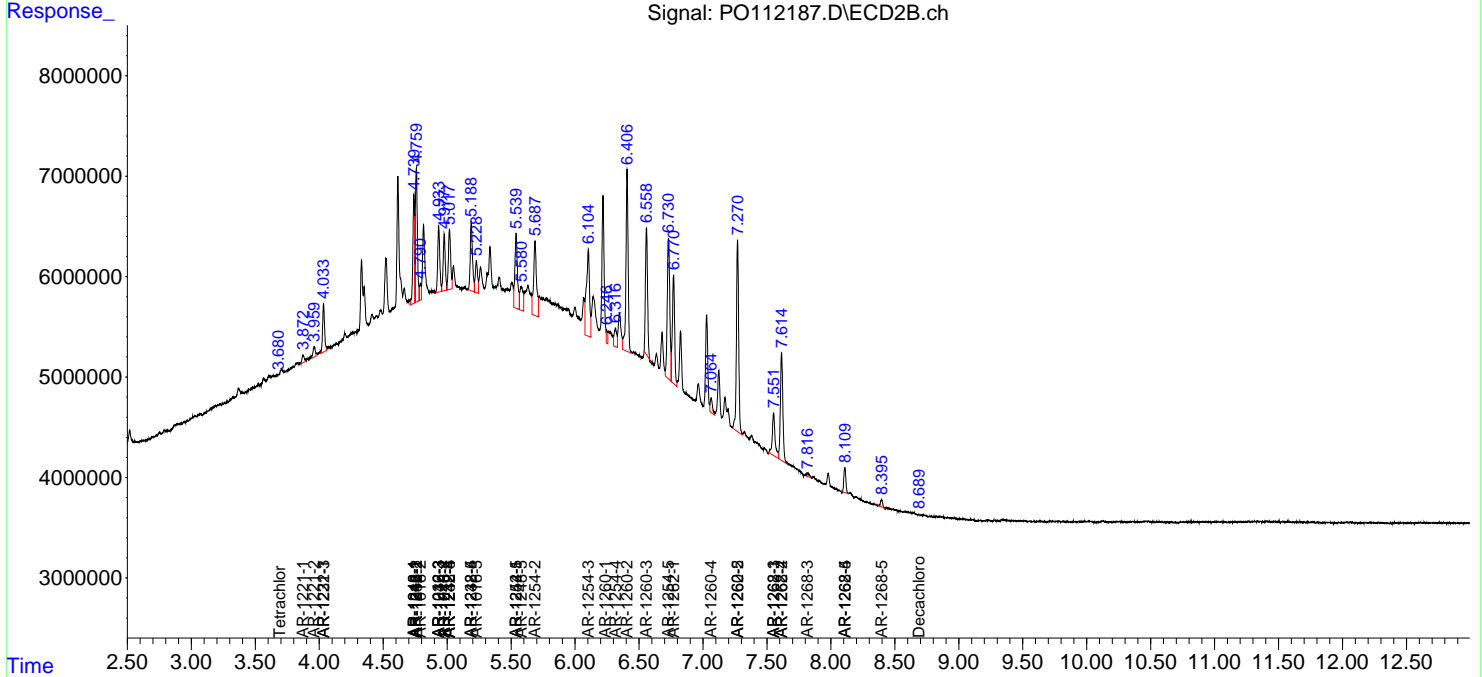
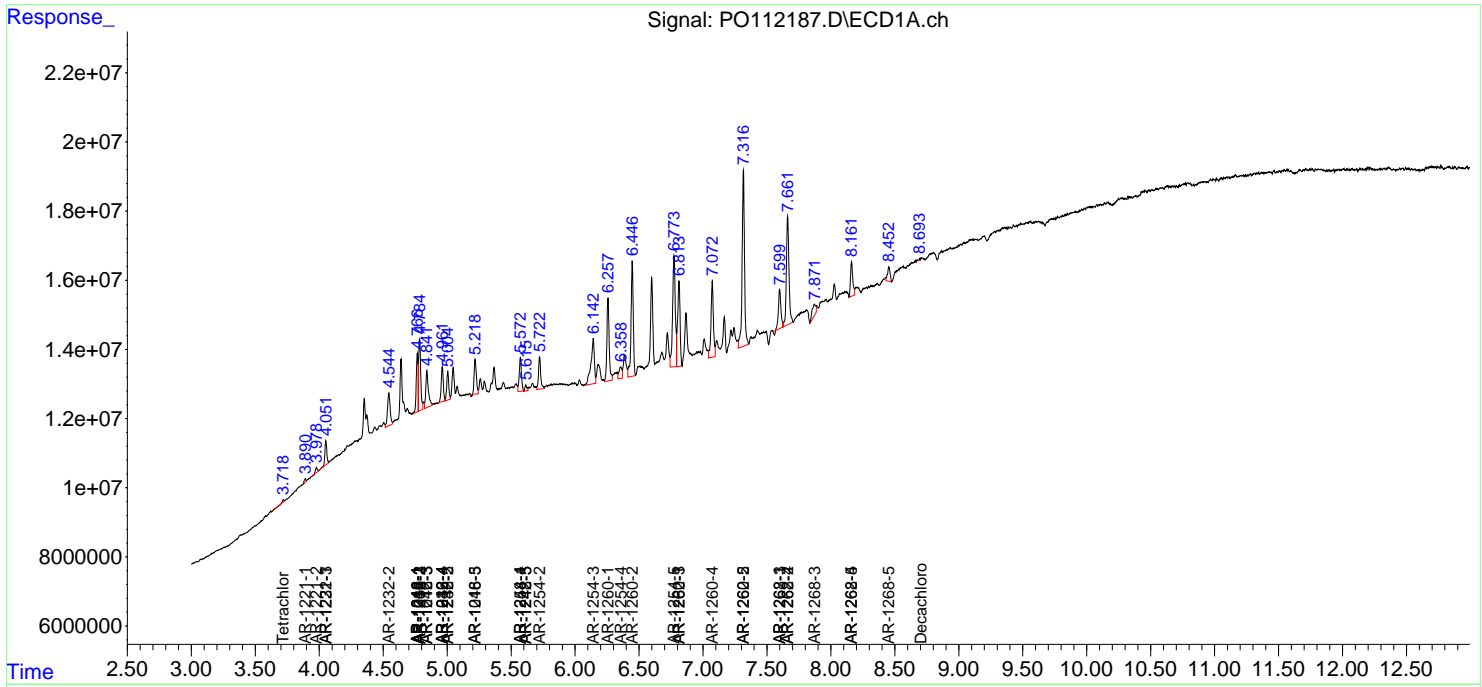
(f)=RT Delta > 1/2 Window (#)=Amounts differ by > 25% (m)=manual int.

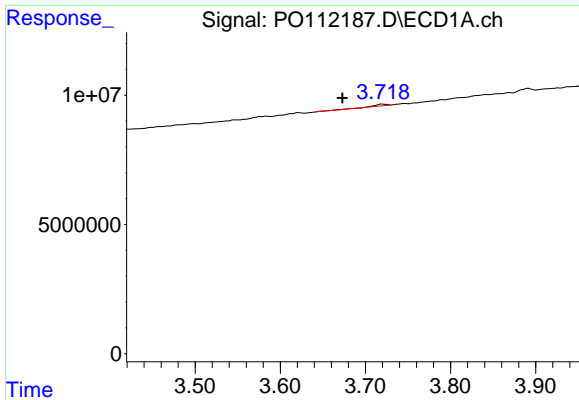
Data Path : Z:\pestpcbsrv\HPCHEM1\ECD_O\Data\PO071025\
 Data File : PO112187.D
 Signal(s) : Signal #1: ECD1A.ch Signal #2: ECD2B.ch
 Acq On : 10 Jul 2025 12:42
 Operator : YP/AJ
 Sample : PP24709
 Misc :
 ALS Vial : 8 Sample Multiplier: 1

Instrument :
 ECD_O
ClientSampleId :
 PP24709

Integration File signal 1: autoint1.e
 Integration File signal 2: autoint2.e
 Quant Time: Jul 10 15:42:35 2025
 Quant Method : Z:\pestpcbsrv\HPCHEM1\ECD_O\methods\PO070825.M
 Quant Title : GC EXTRACTABLES
 QLast Update : Wed Jul 09 10:50:50 2025
 Response via : Initial Calibration
 Integrator: ChemStation

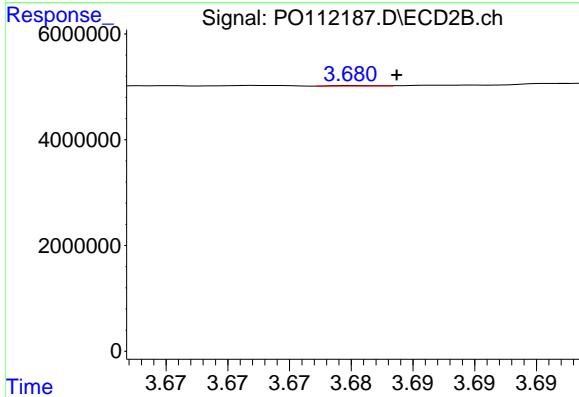
Volume Inj. : 2 µl
 Signal #1 Phase : ZB-MR1 Signal #2 Phase: ZB-MR2
 Signal #1 Info : 30Mx0.32mmx 0.50µ Signal #2 Info : 30M x 0.32mm x 0.25µm



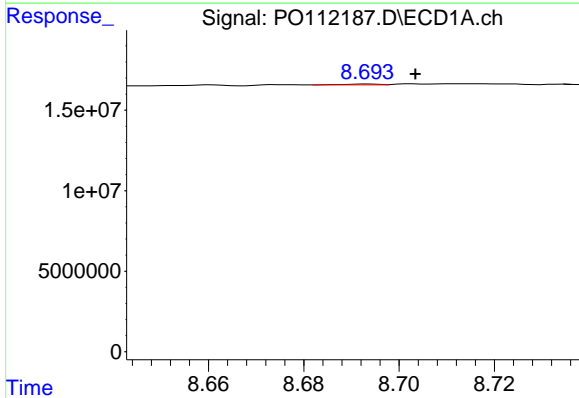


#1 Tetrachloro-m-xylene
 R.T.: 3.719 min
 Delta R.T.: 0.046 min
 Response: 684794
 Conc: 0.07 ng/ml

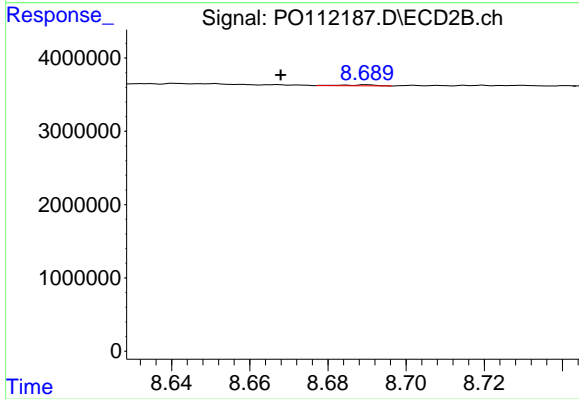
Instrument :
 ECD_O
 ClientSampleId :
 PP24709



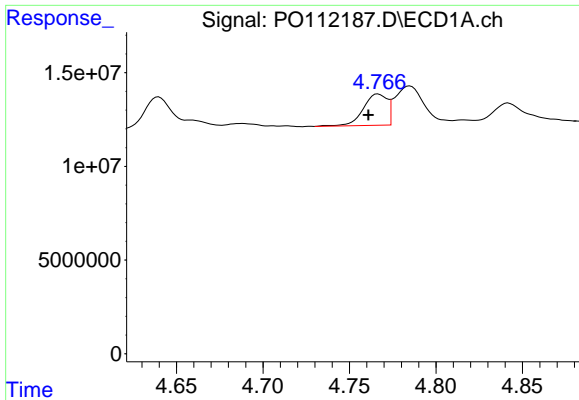
#1 Tetrachloro-m-xylene
 R.T.: 3.680 min
 Delta R.T.: -0.003 min
 Response: 24211
 Conc: 0.00 ng/ml



#2 Decachlorobiphenyl
 R.T.: 8.693 min
 Delta R.T.: -0.010 min
 Response: 245879
 Conc: 0.04 ng/ml



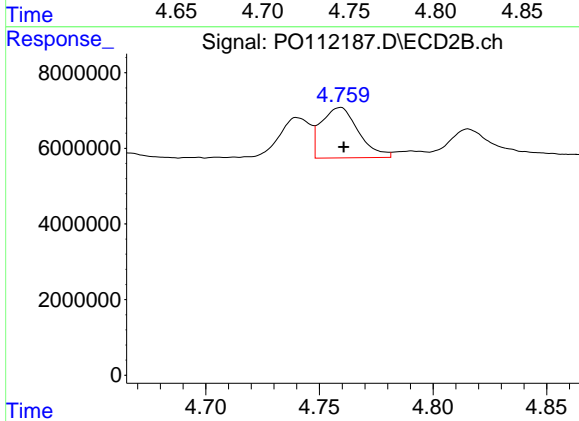
#2 Decachlorobiphenyl
 R.T.: 8.690 min
 Delta R.T.: 0.022 min
 Response: 76840
 Conc: 0.04 ng/ml



#3 AR-1016-1

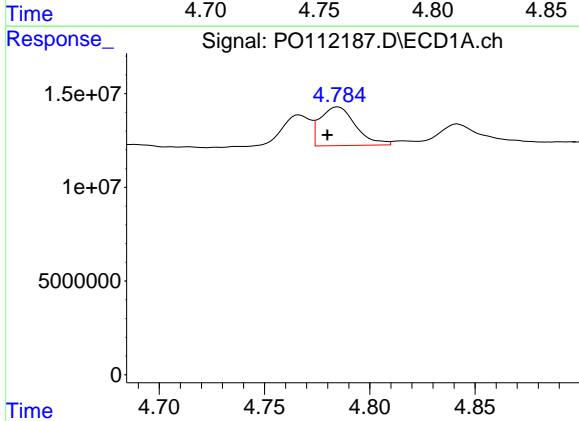
R.T.: 4.767 min
 Delta R.T.: 0.006 min
 Response: 16054413
 Conc: 47.20 ng/ml

Instrument :
 ECD_O
 ClientSampleId :
 PP24709



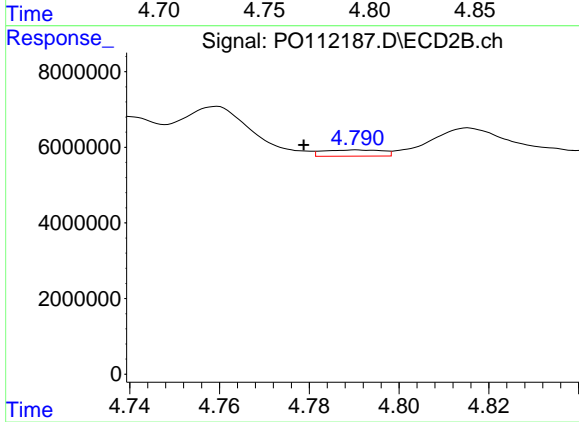
#3 AR-1016-1

R.T.: 4.759 min
 Delta R.T.: -0.001 min
 Response: 15193263
 Conc: 68.18 ng/ml



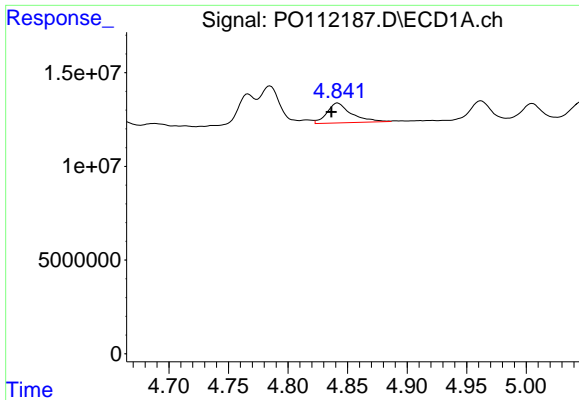
#4 AR-1016-2

R.T.: 4.785 min
 Delta R.T.: 0.005 min
 Response: 24250075
 Conc: 48.76 ng/ml



#4 AR-1016-2

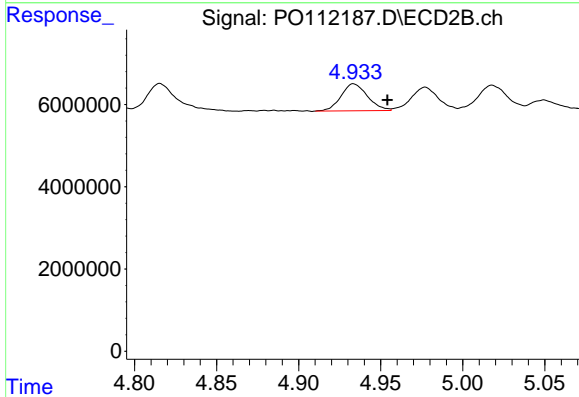
R.T.: 4.791 min
 Delta R.T.: 0.012 min
 Response: 1516003
 Conc: 4.61 ng/ml



#5 AR-1016-3

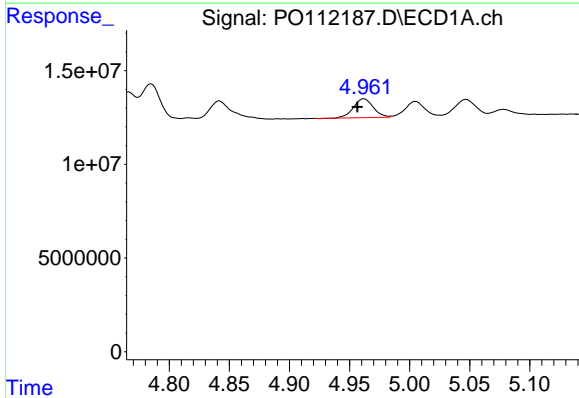
R.T.: 4.842 min
 Delta R.T.: 0.005 min
 Response: 15110174
 Conc: 46.68 ng/ml

Instrument :
 ECD_O
 ClientSampleId :
 PP24709



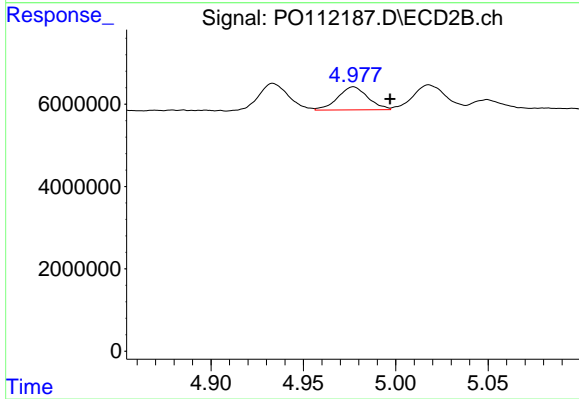
#5 AR-1016-3

R.T.: 4.933 min
 Delta R.T.: -0.021 min
 Response: 7387648
 Conc: 43.49 ng/ml



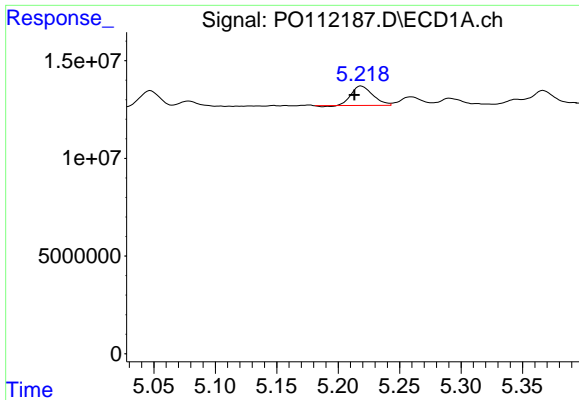
#6 AR-1016-4

R.T.: 4.962 min
 Delta R.T.: 0.006 min
 Response: 11428150
 Conc: 44.50 ng/ml



#6 AR-1016-4

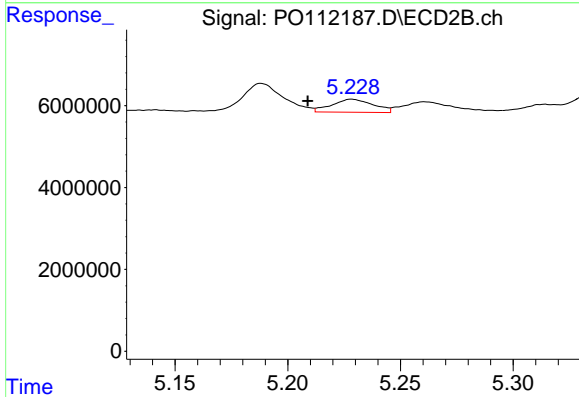
R.T.: 4.977 min
 Delta R.T.: -0.020 min
 Response: 6387052
 Conc: 46.54 ng/ml



#7 AR-1016-5

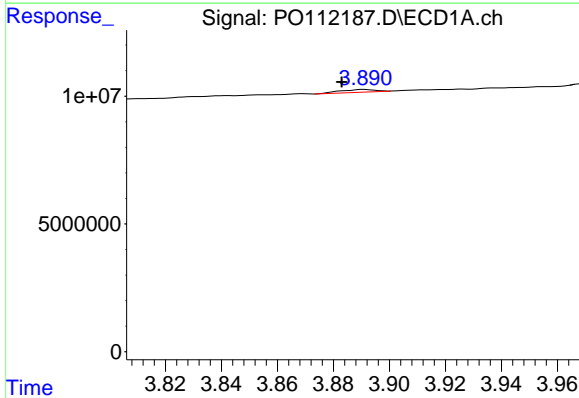
R.T.: 5.219 min
 Delta R.T.: 0.005 min
 Response: 11927181
 Conc: 43.58 ng/ml

Instrument :
 ECD_O
 ClientSampleId :
 PP24709



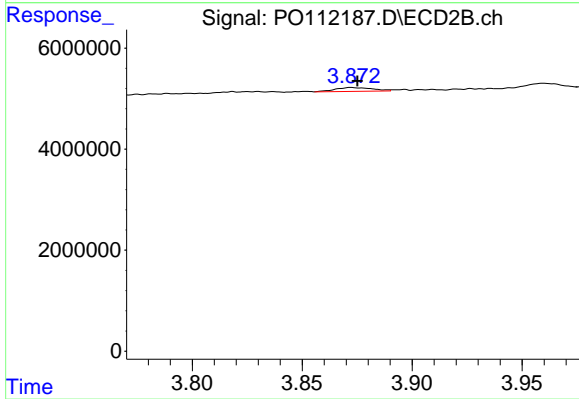
#7 AR-1016-5

R.T.: 5.228 min
 Delta R.T.: 0.019 min
 Response: 4080131
 Conc: 23.66 ng/ml



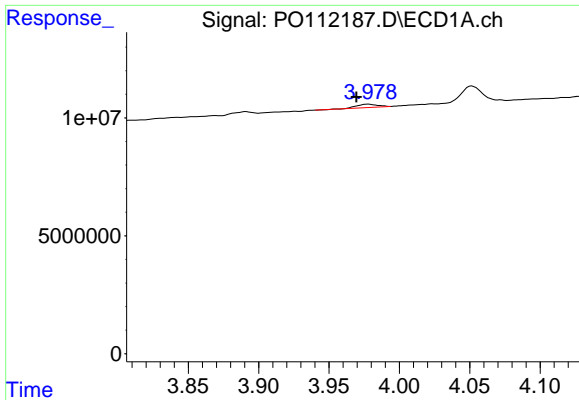
#8 AR-1221-1

R.T.: 3.891 min
 Delta R.T.: 0.008 min
 Response: 921118
 Conc: 7.90 ng/ml



#8 AR-1221-1

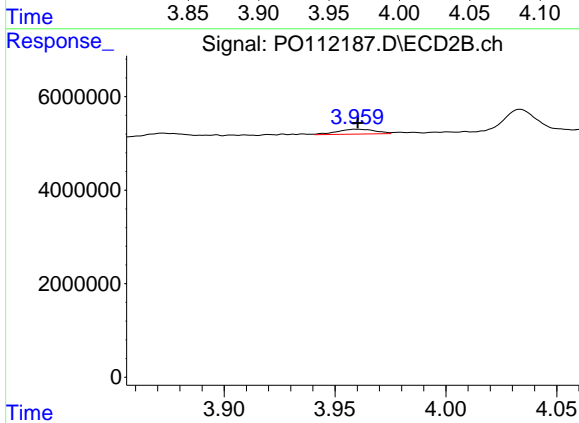
R.T.: 3.872 min
 Delta R.T.: -0.003 min
 Response: 907479
 Conc: 11.03 ng/ml



#9 AR-1221-2

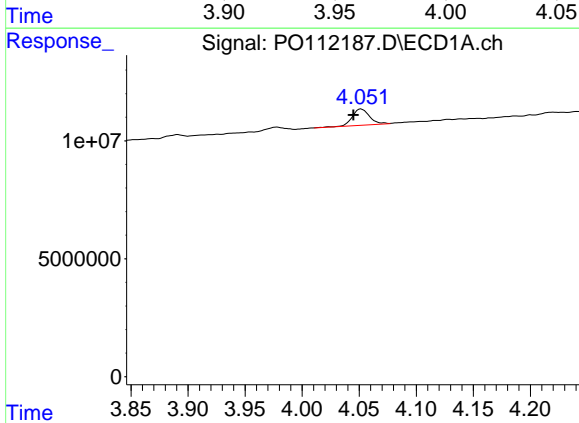
R.T.: 3.978 min
 Delta R.T.: 0.009 min
 Response: 1436090
 Conc: 18.22 ng/ml

Instrument :
 ECD_O
 ClientSampleId :
 PP24709



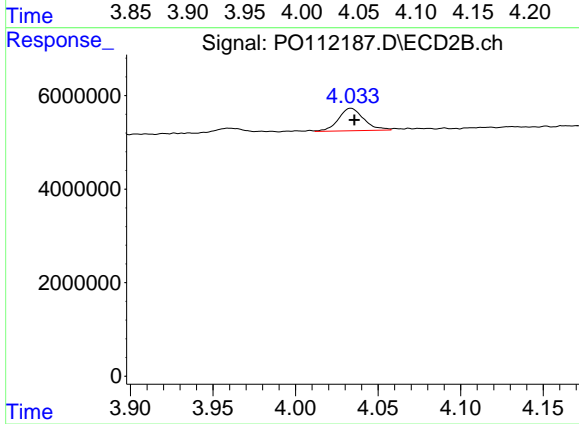
#9 AR-1221-2

R.T.: 3.960 min
 Delta R.T.: 0.000 min
 Response: 1259915
 Conc: 21.23 ng/ml



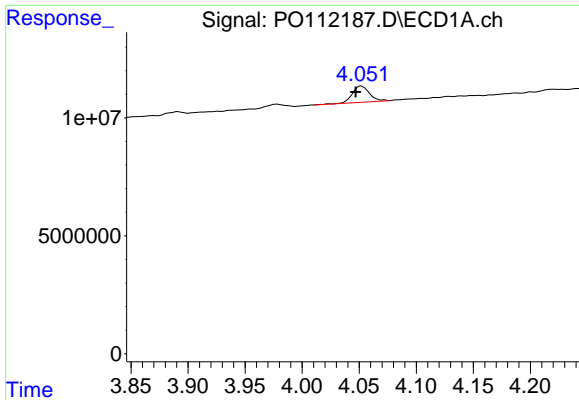
#10 AR-1221-3

R.T.: 4.052 min
 Delta R.T.: 0.007 min
 Response: 7222998
 Conc: 26.79 ng/ml



#10 AR-1221-3

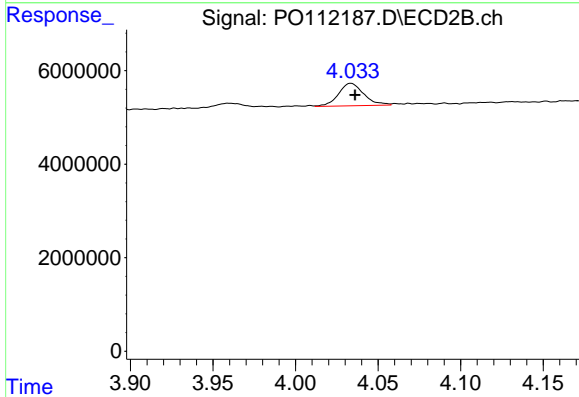
R.T.: 4.034 min
 Delta R.T.: -0.002 min
 Response: 5127156
 Conc: 27.16 ng/ml



#11 AR-1232-1

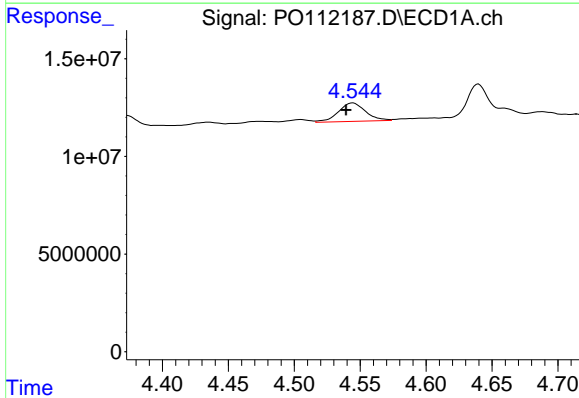
R.T.: 4.052 min
 Delta R.T.: 0.005 min
 Response: 7222998
 Conc: 33.65 ng/ml

Instrument :
 ECD_O
 ClientSampleId :
 PP24709



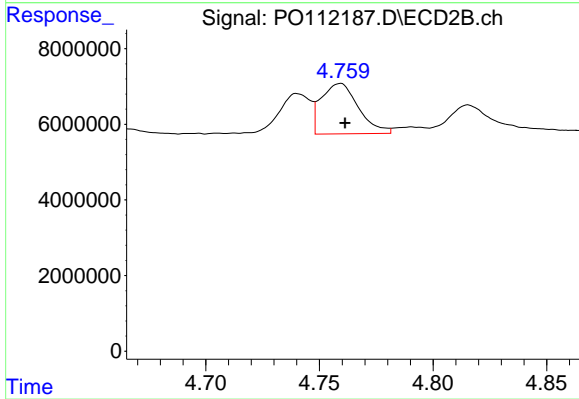
#11 AR-1232-1

R.T.: 4.034 min
 Delta R.T.: -0.002 min
 Response: 5127156
 Conc: 34.16 ng/ml



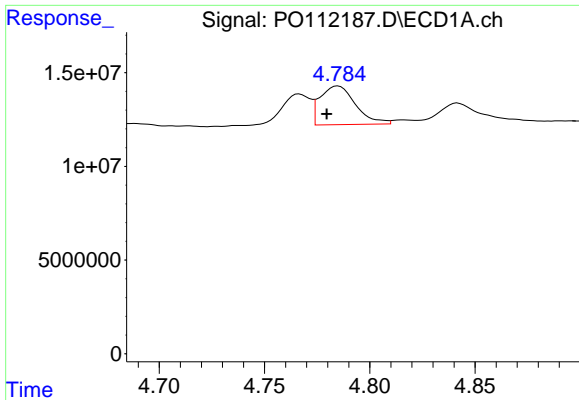
#12 AR-1232-2

R.T.: 4.544 min
 Delta R.T.: 0.005 min
 Response: 13580127
 Conc: 119.50 ng/ml



#12 AR-1232-2

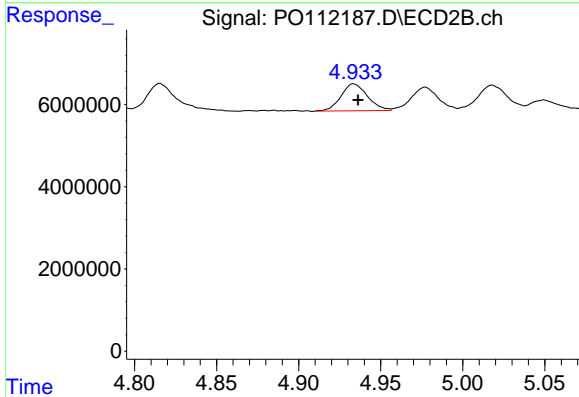
R.T.: 4.759 min
 Delta R.T.: -0.002 min
 Response: 15193263
 Conc: 99.25 ng/ml



#13 AR-1232-3

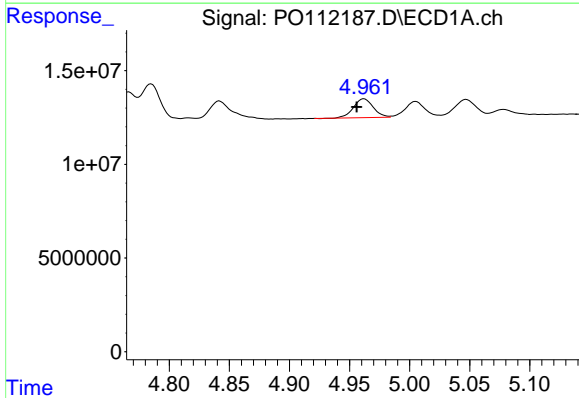
R.T.: 4.785 min
 Delta R.T.: 0.005 min
 Response: 24250075
 Conc: 105.89 ng/ml

Instrument :
 ECD_O
 ClientSampleId :
 PP24709



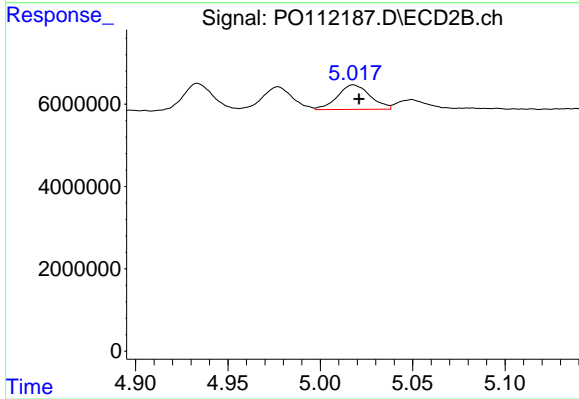
#13 AR-1232-3

R.T.: 4.933 min
 Delta R.T.: -0.003 min
 Response: 7387648
 Conc: 97.84 ng/ml



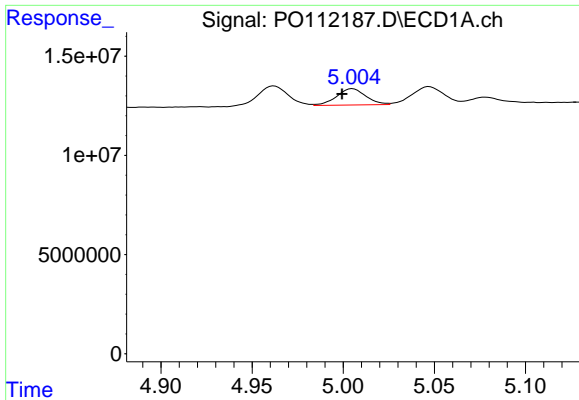
#14 AR-1232-4

R.T.: 4.962 min
 Delta R.T.: 0.006 min
 Response: 11428150
 Conc: 99.99 ng/ml



#14 AR-1232-4

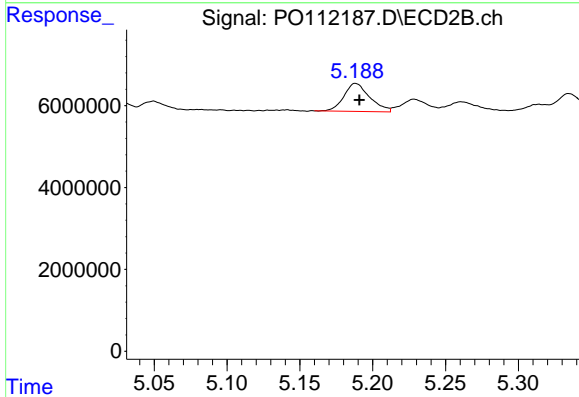
R.T.: 5.018 min
 Delta R.T.: -0.003 min
 Response: 7372690
 Conc: 111.73 ng/ml



#15 AR-1232-5

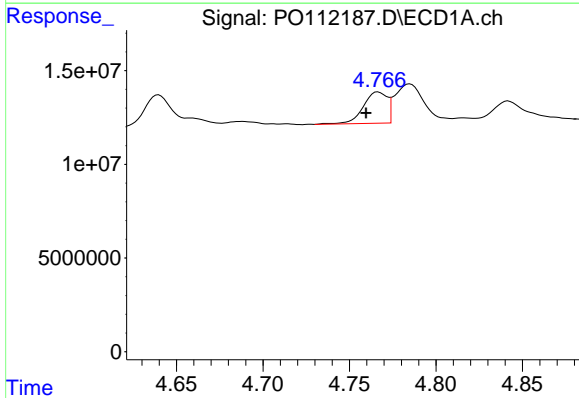
R.T.: 5.005 min
 Delta R.T.: 0.006 min
 Response: 9173889
 Conc: 124.98 ng/ml

Instrument :
 ECD_O
 ClientSampleId :
 PP24709



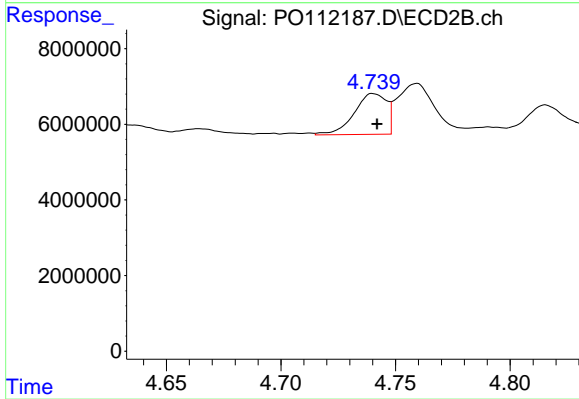
#15 AR-1232-5

R.T.: 5.188 min
 Delta R.T.: -0.003 min
 Response: 8439705
 Conc: 113.65 ng/ml



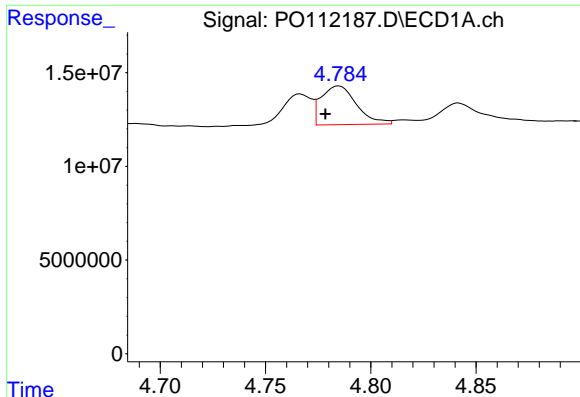
#16 AR-1242-1

R.T.: 4.767 min
 Delta R.T.: 0.007 min
 Response: 16054413
 Conc: 55.43 ng/ml



#16 AR-1242-1

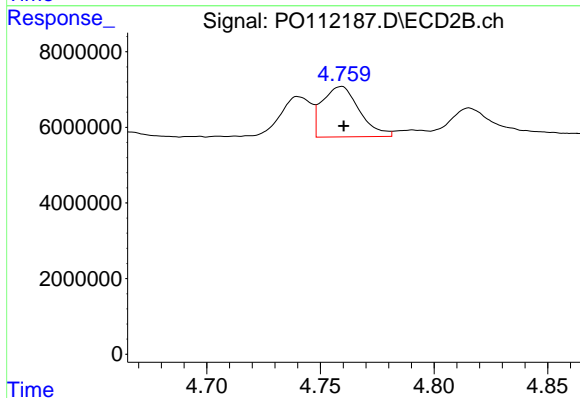
R.T.: 4.740 min
 Delta R.T.: -0.002 min
 Response: 10578908
 Conc: 54.57 ng/ml



#17 AR-1242-2

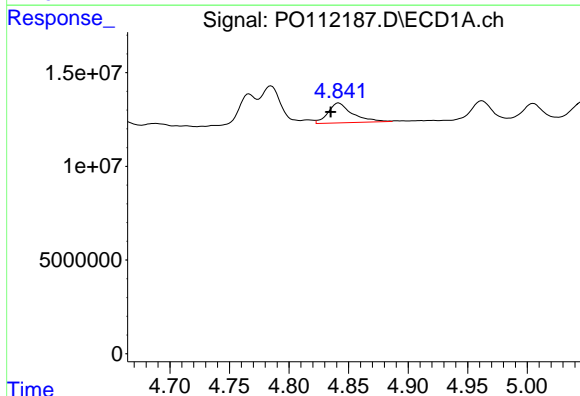
R.T.: 4.785 min
 Delta R.T.: 0.007 min
 Response: 24250075
 Conc: 56.94 ng/ml

Instrument :
 ECD_O
 ClientSampleId :
 PP24709



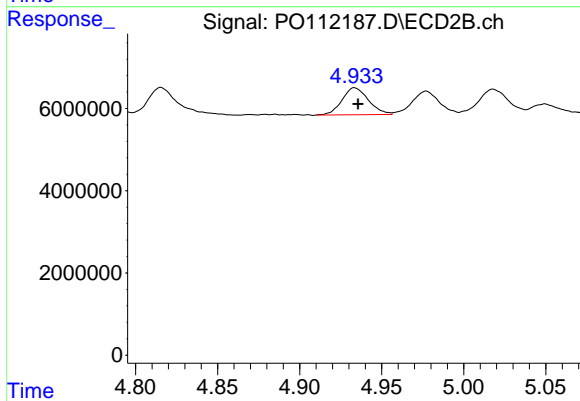
#17 AR-1242-2

R.T.: 4.759 min
 Delta R.T.: 0.000 min
 Response: 15193263
 Conc: 53.62 ng/ml



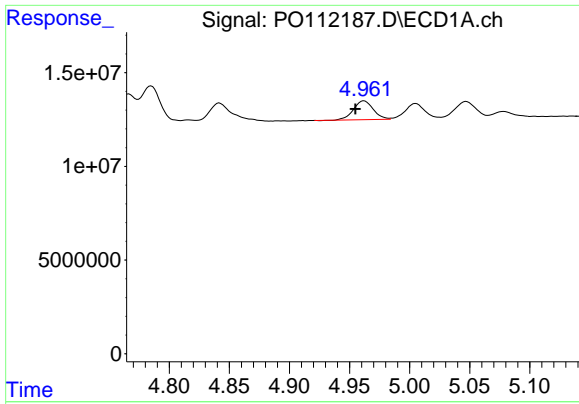
#18 AR-1242-3

R.T.: 4.842 min
 Delta R.T.: 0.007 min
 Response: 15110174
 Conc: 55.21 ng/ml



#18 AR-1242-3

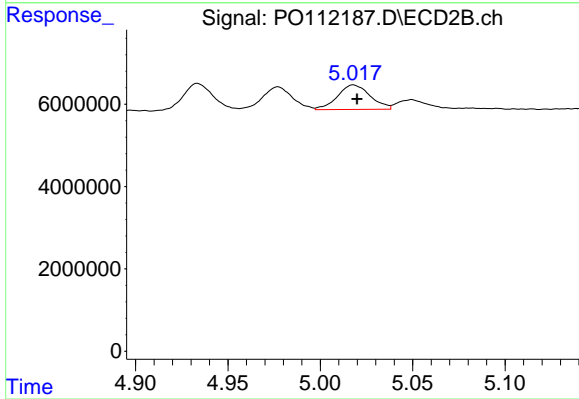
R.T.: 4.933 min
 Delta R.T.: -0.002 min
 Response: 7387648
 Conc: 50.71 ng/ml



#19 AR-1242-4

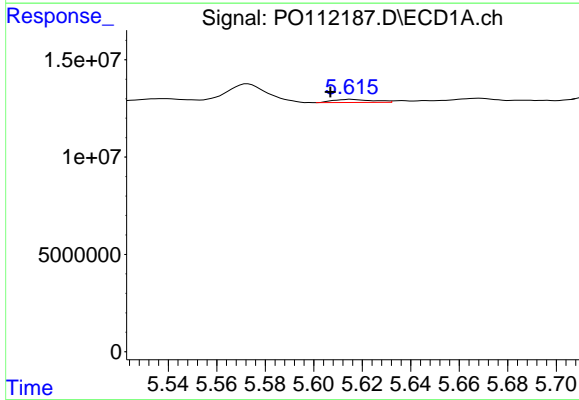
R.T.: 4.962 min
 Delta R.T.: 0.007 min
 Response: 11428150
 Conc: 50.72 ng/ml

Instrument :
 ECD_O
 ClientSampleId :
 PP24709



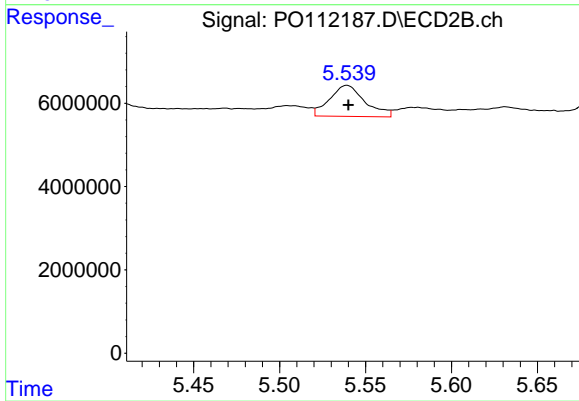
#19 AR-1242-4

R.T.: 5.018 min
 Delta R.T.: -0.002 min
 Response: 7372690
 Conc: 51.98 ng/ml



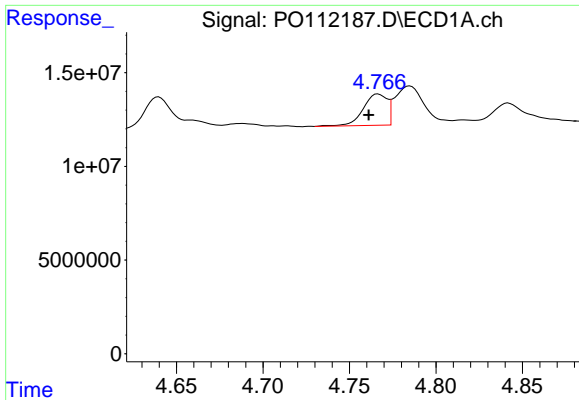
#20 AR-1242-5

R.T.: 5.615 min
 Delta R.T.: 0.008 min
 Response: 1826121
 Conc: 8.63 ng/ml



#20 AR-1242-5

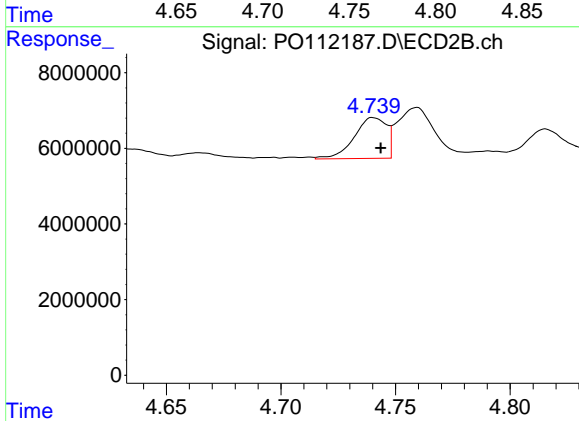
R.T.: 5.539 min
 Delta R.T.: 0.000 min
 Response: 10648033
 Conc: 58.59 ng/ml



#21 AR-1248-1

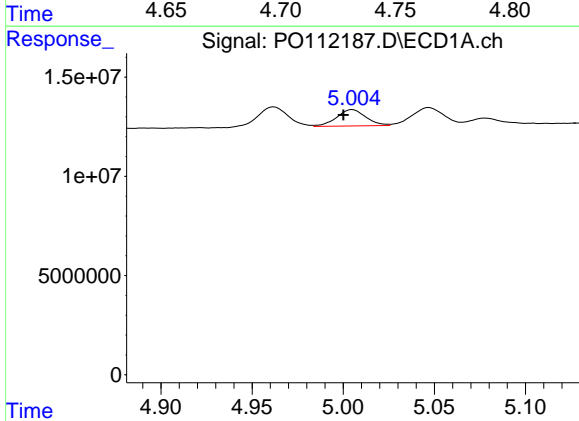
R.T.: 4.767 min
 Delta R.T.: 0.005 min
 Response: 16054413
 Conc: 70.76 ng/ml

Instrument :
 ECD_O
 ClientSampleId :
 PP24709



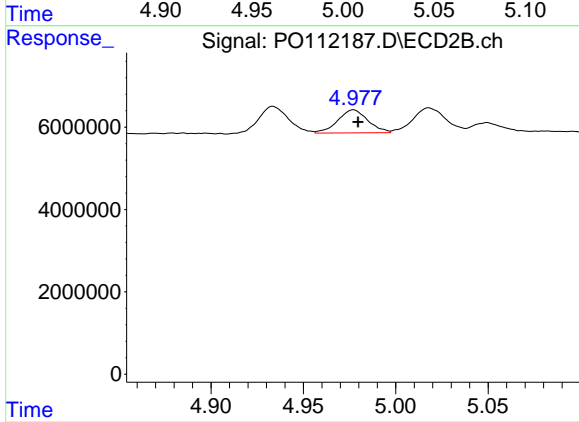
#21 AR-1248-1

R.T.: 4.740 min
 Delta R.T.: -0.004 min
 Response: 10578908
 Conc: 68.53 ng/ml



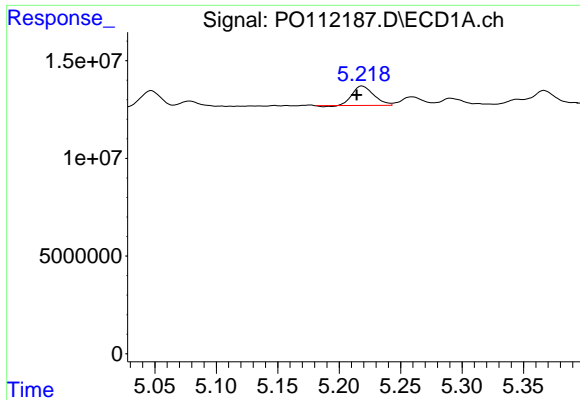
#22 AR-1248-2

R.T.: 5.005 min
 Delta R.T.: 0.005 min
 Response: 9173889
 Conc: 29.75 ng/ml



#22 AR-1248-2

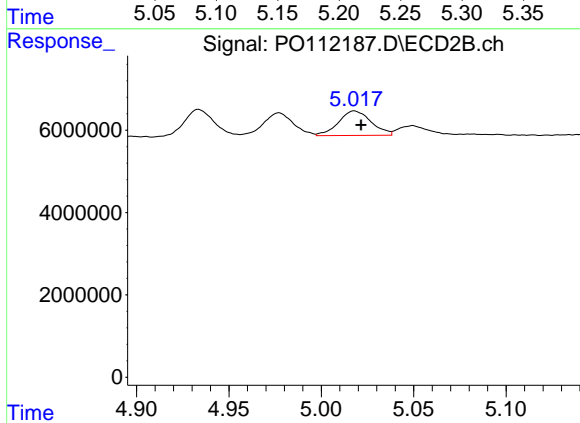
R.T.: 4.977 min
 Delta R.T.: -0.003 min
 Response: 6387052
 Conc: 31.04 ng/ml



#23 AR-1248-3

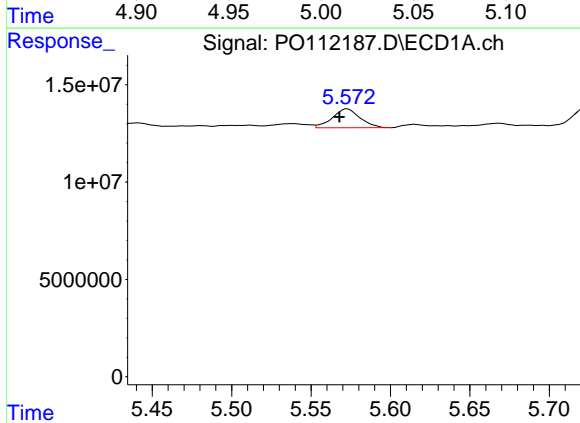
R.T.: 5.219 min
 Delta R.T.: 0.005 min
 Response: 11927181
 Conc: 29.28 ng/ml

Instrument :
 ECD_O
 ClientSampleId :
 PP24709



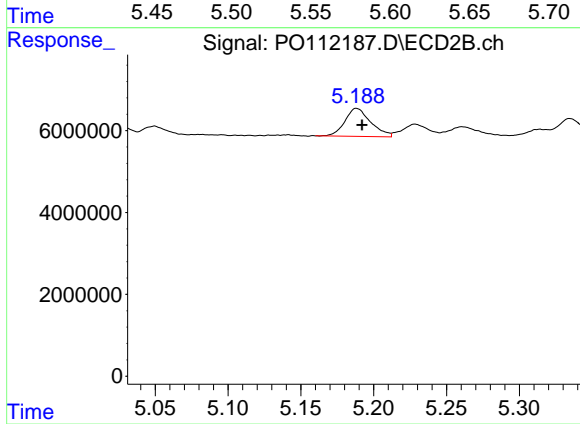
#23 AR-1248-3

R.T.: 5.018 min
 Delta R.T.: -0.004 min
 Response: 7372690
 Conc: 34.32 ng/ml



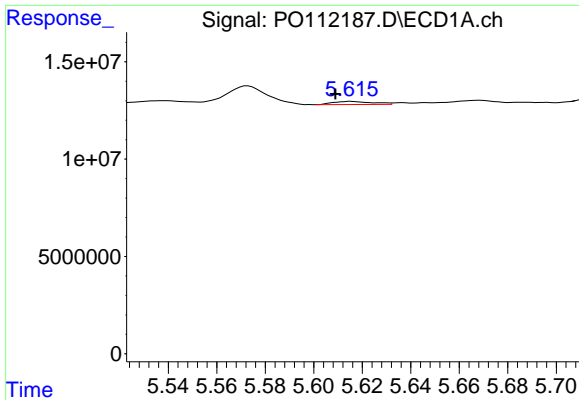
#24 AR-1248-4

R.T.: 5.573 min
 Delta R.T.: 0.005 min
 Response: 11778998
 Conc: 20.41 ng/ml



#24 AR-1248-4

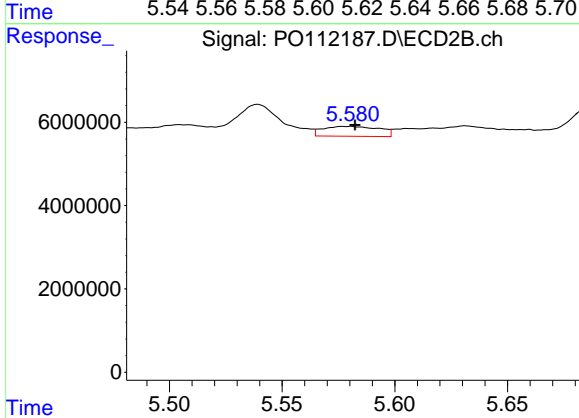
R.T.: 5.188 min
 Delta R.T.: -0.004 min
 Response: 8439705
 Conc: 32.62 ng/ml



#25 AR-1248-5

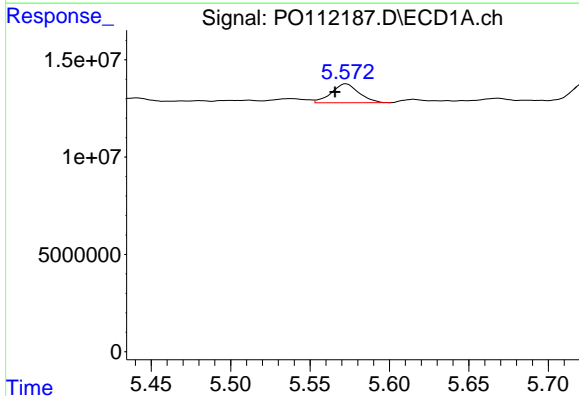
R.T.: 5.615 min
 Delta R.T.: 0.006 min
 Response: 1826121
 Conc: 4.68 ng/ml

Instrument :
 ECD_O
 ClientSampleId :
 PP24709



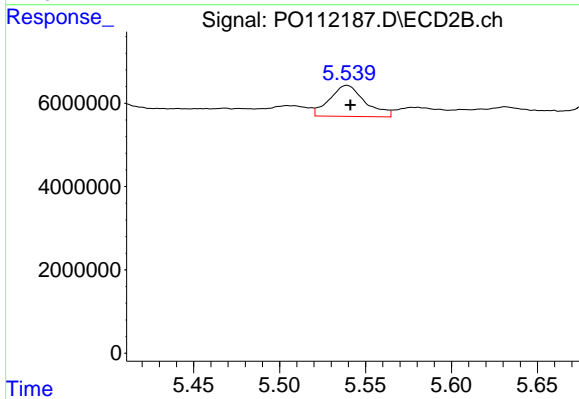
#25 AR-1248-5

R.T.: 5.581 min
 Delta R.T.: -0.002 min
 Response: 4118343
 Conc: 16.44 ng/ml



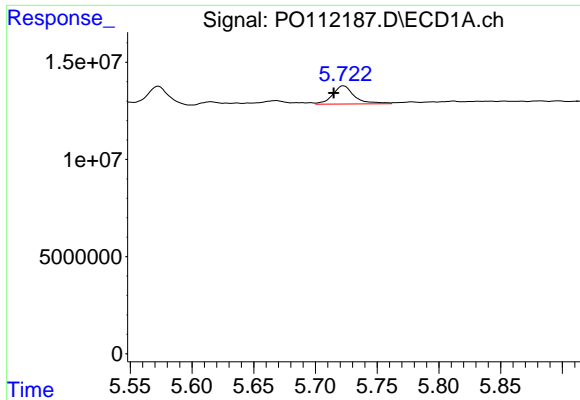
#26 AR-1254-1

R.T.: 5.573 min
 Delta R.T.: 0.007 min
 Response: 11778998
 Conc: 19.15 ng/ml



#26 AR-1254-1

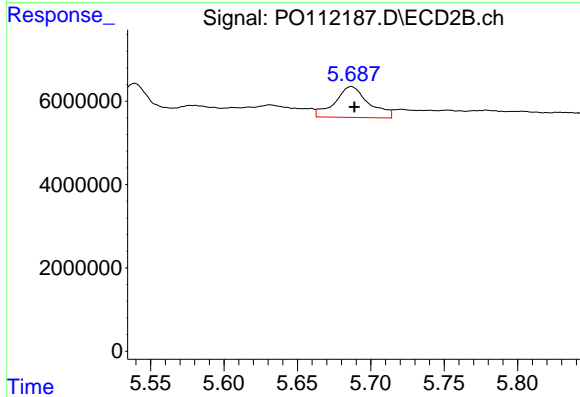
R.T.: 5.539 min
 Delta R.T.: -0.002 min
 Response: 10648033
 Conc: 27.94 ng/ml



#27 AR-1254-2

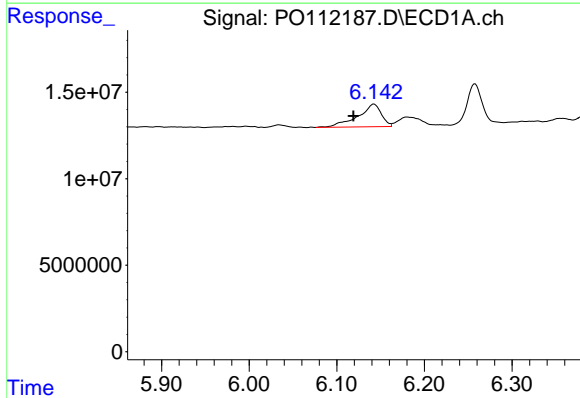
R.T.: 5.723 min
 Delta R.T.: 0.008 min
 Response: 11417847
 Conc: 21.31 ng/ml

Instrument :
 ECD_O
 ClientSampleId :
 PP24709



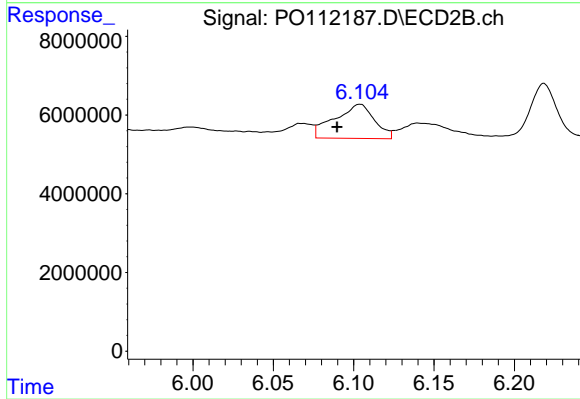
#27 AR-1254-2

R.T.: 5.687 min
 Delta R.T.: -0.002 min
 Response: 11934318
 Conc: 35.97 ng/ml



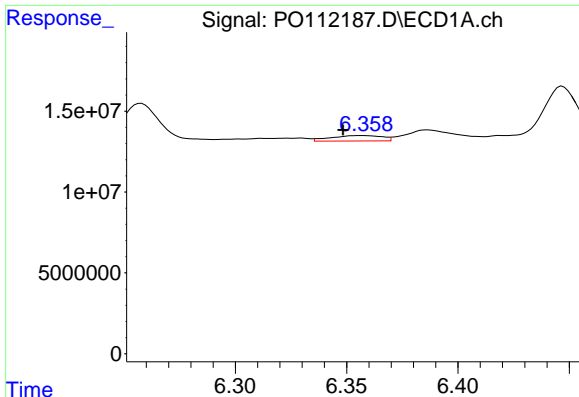
#28 AR-1254-3

R.T.: 6.142 min
 Delta R.T.: 0.023 min
 Response: 24406246
 Conc: 29.07 ng/ml



#28 AR-1254-3

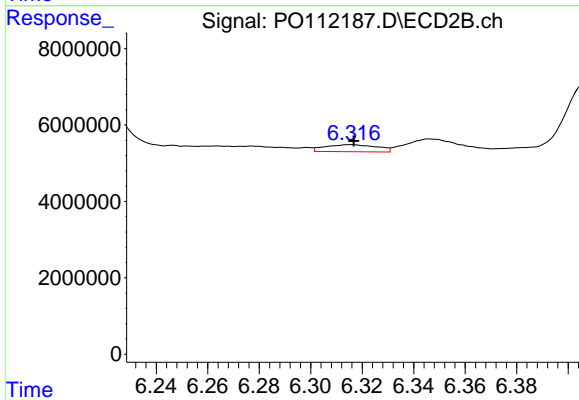
R.T.: 6.104 min
 Delta R.T.: 0.015 min
 Response: 14922045
 Conc: 30.96 ng/ml



#29 AR-1254-4

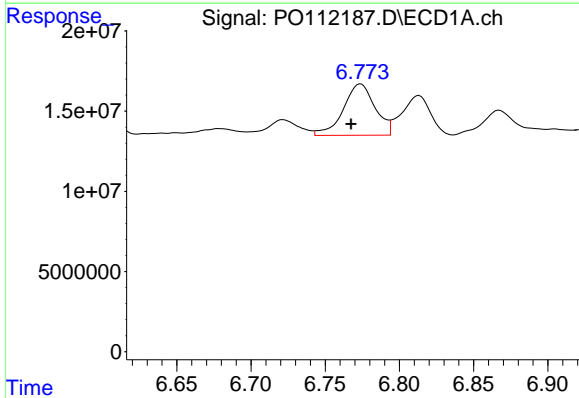
R.T.: 6.358 min
 Delta R.T.: 0.009 min
 Response: 5302850
 Conc: 11.02 ng/ml

Instrument :
 ECD_O
 ClientSampleId :
 PP24709



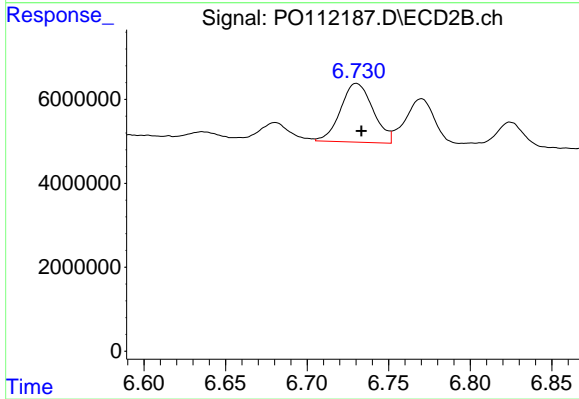
#29 AR-1254-4

R.T.: 6.316 min
 Delta R.T.: -0.001 min
 Response: 2590096
 Conc: 9.94 ng/ml



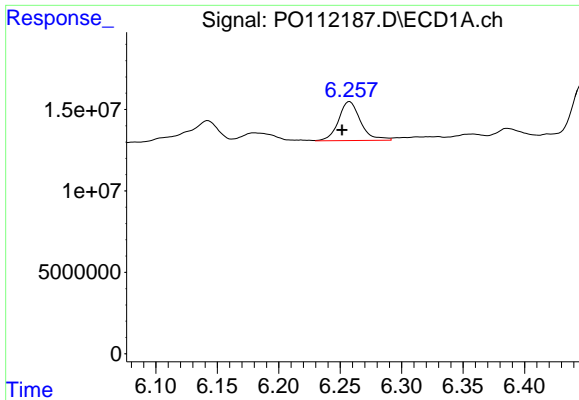
#30 AR-1254-5

R.T.: 6.774 min
 Delta R.T.: 0.006 min
 Response: 47712286
 Conc: 61.65 ng/ml



#30 AR-1254-5

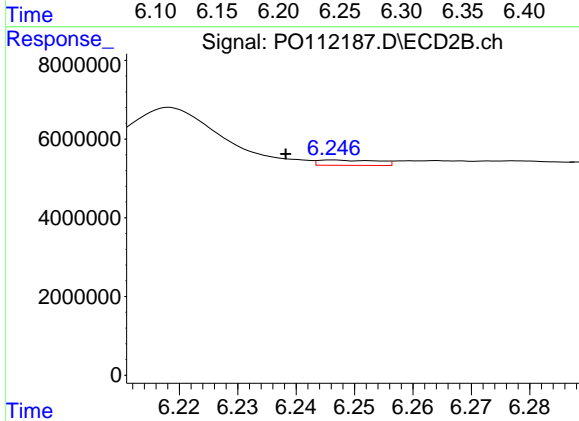
R.T.: 6.730 min
 Delta R.T.: -0.003 min
 Response: 19390897
 Conc: 54.41 ng/ml



#31 AR-1260-1

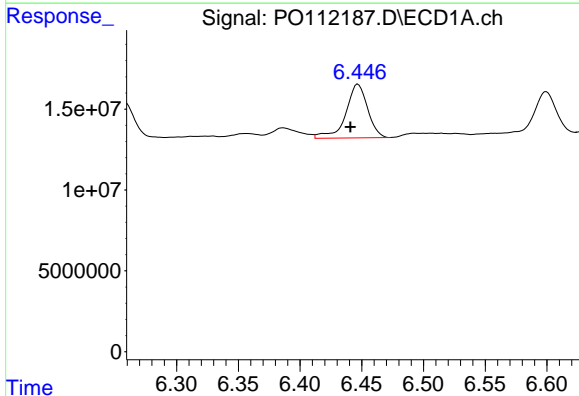
R.T.: 6.258 min
 Delta R.T.: 0.006 min
 Response: 29908422
 Conc: 59.67 ng/ml

Instrument :
 ECD_O
 ClientSampleId :
 PP24709



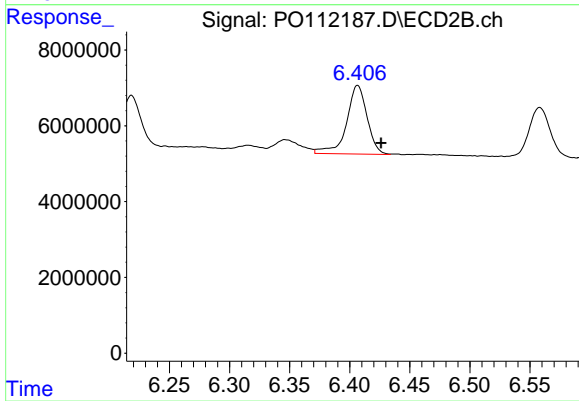
#31 AR-1260-1

R.T.: 6.246 min
 Delta R.T.: 0.008 min
 Response: 943193
 Conc: 3.36 ng/ml



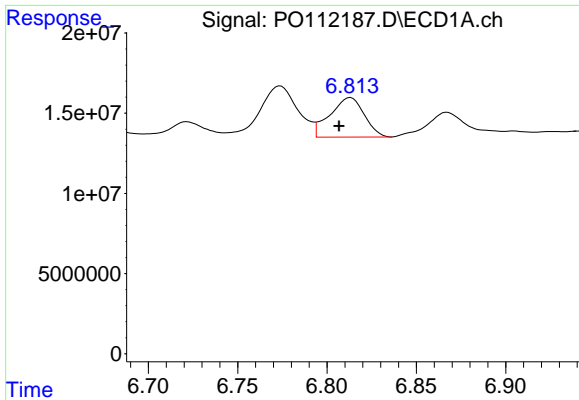
#32 AR-1260-2

R.T.: 6.447 min
 Delta R.T.: 0.006 min
 Response: 40755471
 Conc: 55.21 ng/ml



#32 AR-1260-2

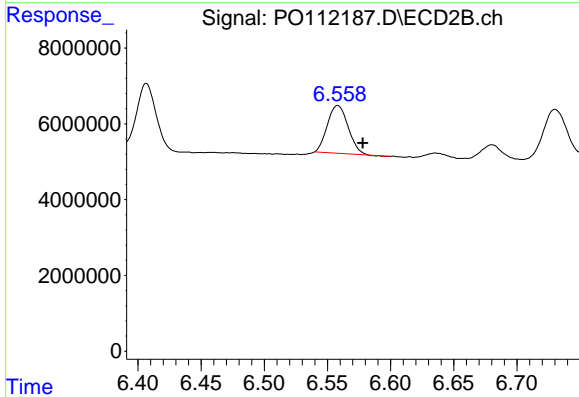
R.T.: 6.407 min
 Delta R.T.: -0.019 min
 Response: 21516453
 Conc: 63.28 ng/ml



#33 AR-1260-3

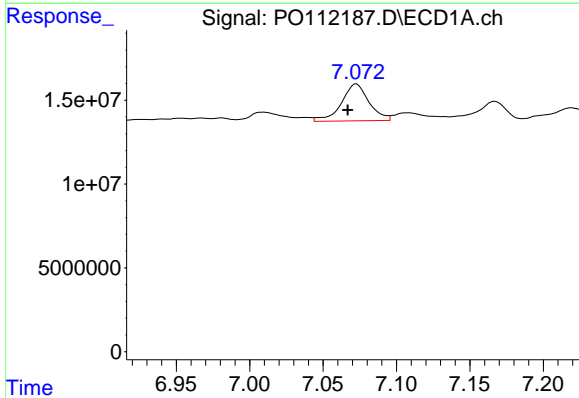
R.T.: 6.813 min
 Delta R.T.: 0.006 min
 Response: 32931440
 Conc: 50.24 ng/ml

Instrument :
 ECD_O
 ClientSampleId :
 PP24709



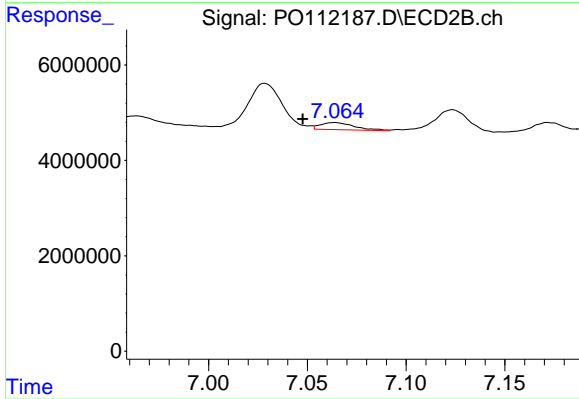
#33 AR-1260-3

R.T.: 6.558 min
 Delta R.T.: -0.020 min
 Response: 14392239
 Conc: 52.22 ng/ml



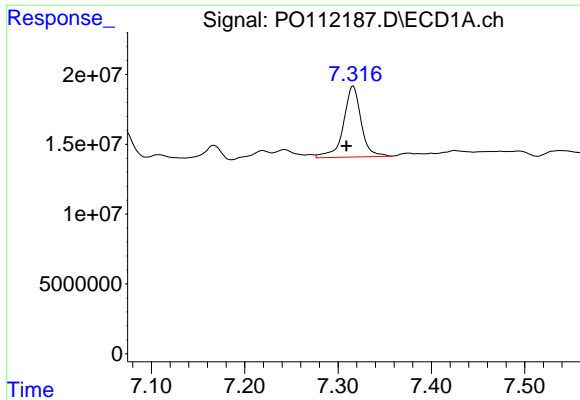
#34 AR-1260-4

R.T.: 7.073 min
 Delta R.T.: 0.006 min
 Response: 28648358
 Conc: 65.82 ng/ml



#34 AR-1260-4

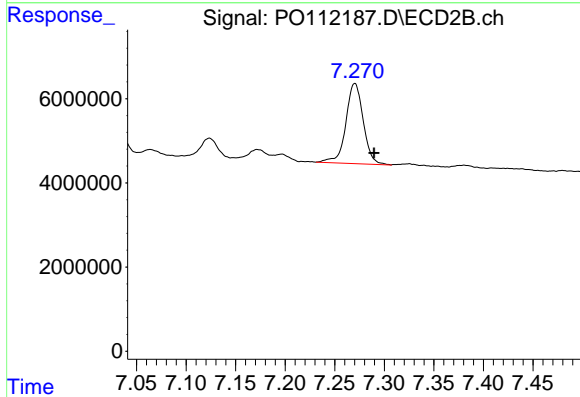
R.T.: 7.064 min
 Delta R.T.: 0.016 min
 Response: 1785823
 Conc: 8.90 ng/ml



#35 AR-1260-5

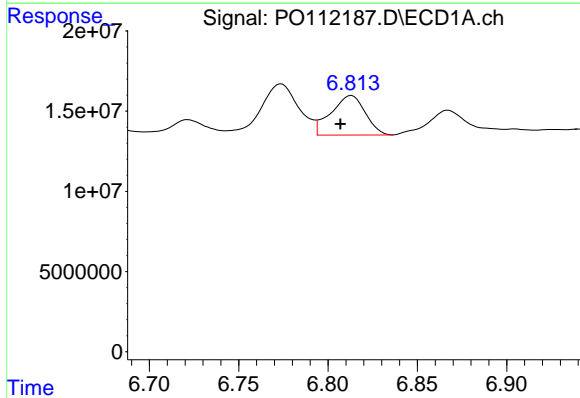
R.T.: 7.316 min
 Delta R.T.: 0.007 min
 Response: 66669392
 Conc: 52.81 ng/ml

Instrument :
 ECD_O
 ClientSampleId :
 PP24709



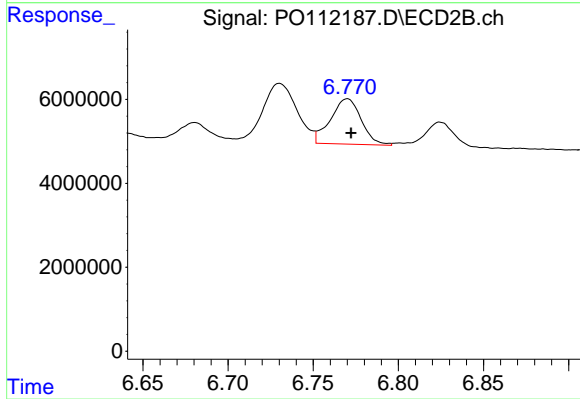
#35 AR-1260-5

R.T.: 7.270 min
 Delta R.T.: -0.019 min
 Response: 23349618
 Conc: 52.15 ng/ml



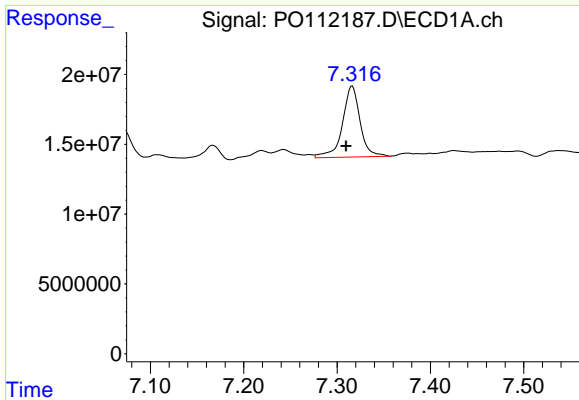
#36 AR-1262-1

R.T.: 6.813 min
 Delta R.T.: 0.006 min
 Response: 32931440
 Conc: 32.23 ng/ml



#36 AR-1262-1

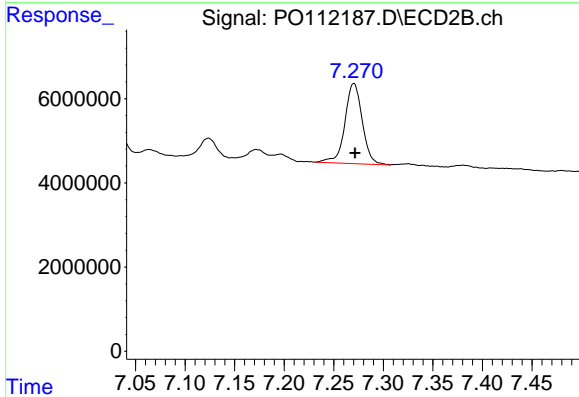
R.T.: 6.770 min
 Delta R.T.: -0.002 min
 Response: 13567248
 Conc: 33.31 ng/ml



#37 AR-1262-2

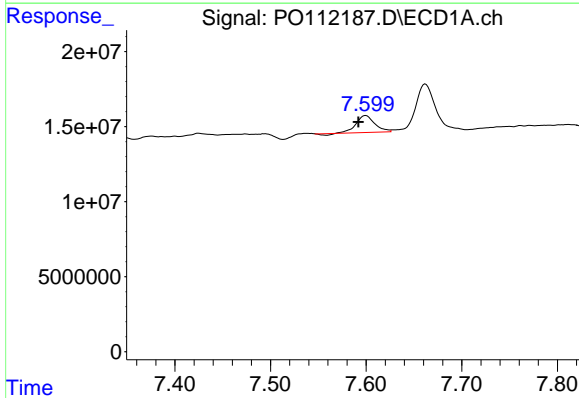
R.T.: 7.316 min
 Delta R.T.: 0.007 min
 Response: 66669392
 Conc: 40.67 ng/ml

Instrument :
 ECD_O
 ClientSampleId :
 PP24709



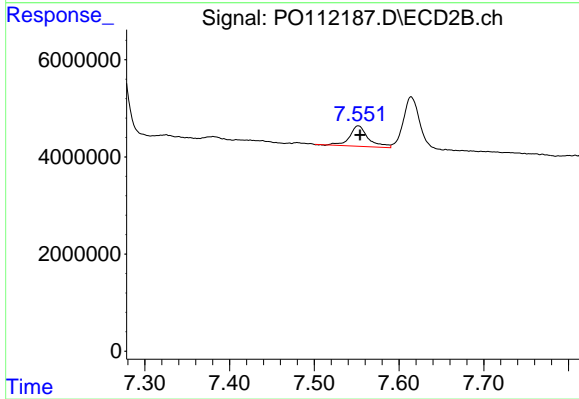
#37 AR-1262-2

R.T.: 7.270 min
 Delta R.T.: -0.001 min
 Response: 23349618
 Conc: 45.56 ng/ml



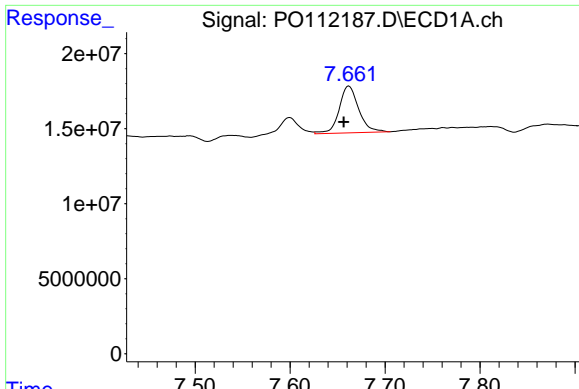
#38 AR-1262-3

R.T.: 7.600 min
 Delta R.T.: 0.008 min
 Response: 14987936
 Conc: 23.35 ng/ml



#38 AR-1262-3

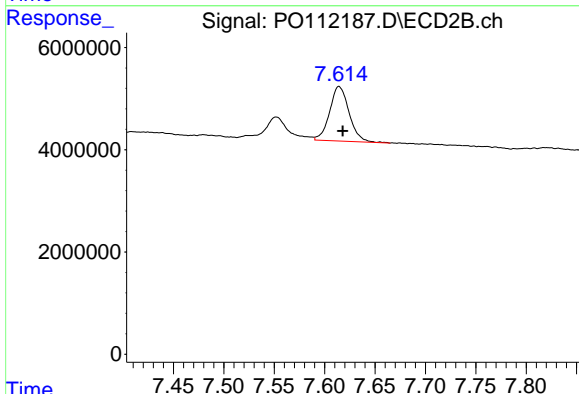
R.T.: 7.552 min
 Delta R.T.: -0.002 min
 Response: 6453073
 Conc: 35.95 ng/ml



#39 AR-1262-4

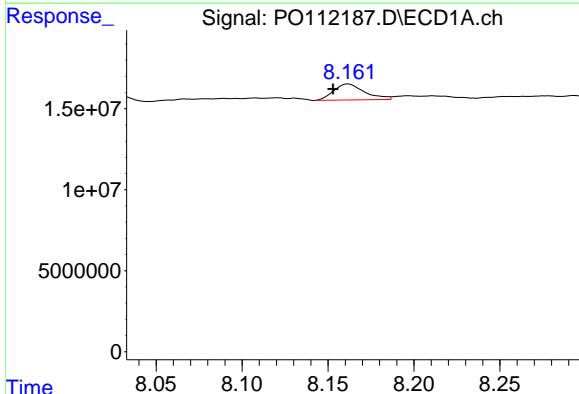
R.T.: 7.662 min
 Delta R.T.: 0.005 min
 Response: 44673860
 Conc: 41.70 ng/ml

Instrument :
 ECD_O
 ClientSampleId :
 PP24709



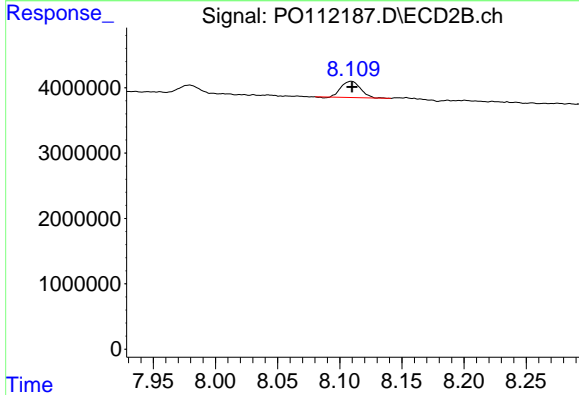
#39 AR-1262-4

R.T.: 7.614 min
 Delta R.T.: -0.004 min
 Response: 14363601
 Conc: 49.37 ng/ml



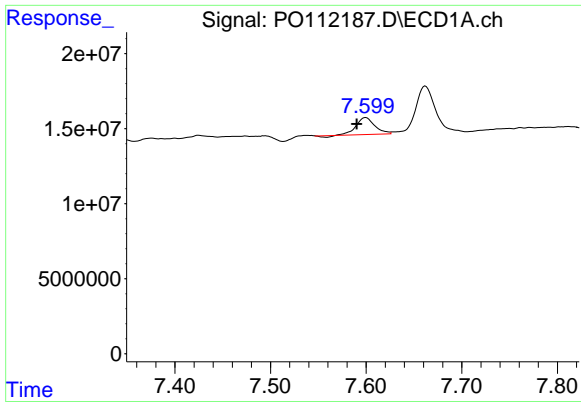
#40 AR-1262-5

R.T.: 8.162 min
 Delta R.T.: 0.009 min
 Response: 12386641
 Conc: 27.64 ng/ml



#40 AR-1262-5

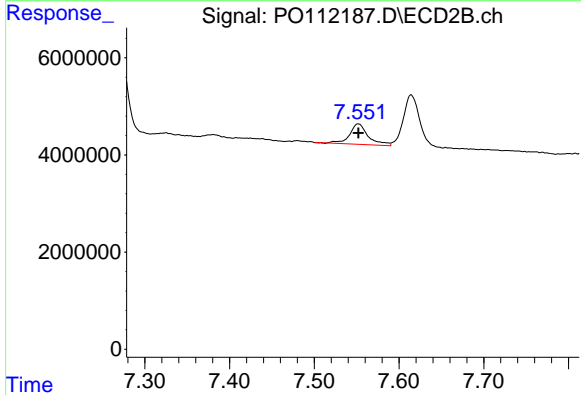
R.T.: 8.109 min
 Delta R.T.: 0.000 min
 Response: 2679944
 Conc: 25.33 ng/ml



#41 AR-1268-1

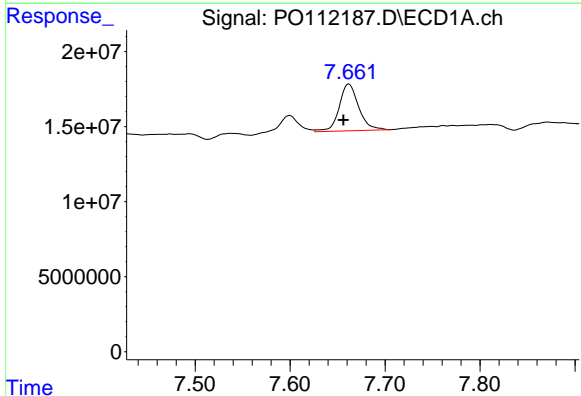
R.T.: 7.600 min
 Delta R.T.: 0.009 min
 Response: 14987936
 Conc: 8.16 ng/ml

Instrument :
 ECD_O
 ClientSampleId :
 PP24709



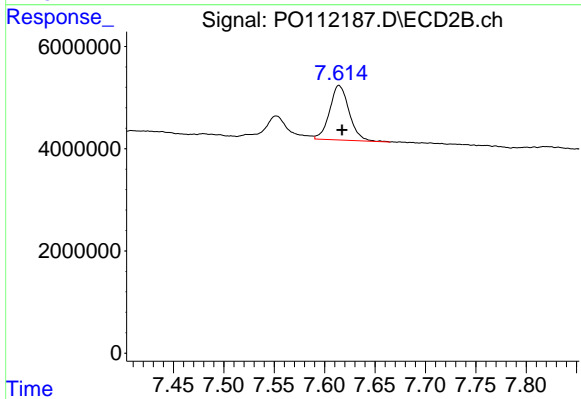
#41 AR-1268-1

R.T.: 7.552 min
 Delta R.T.: 0.000 min
 Response: 6453073
 Conc: 13.13 ng/ml



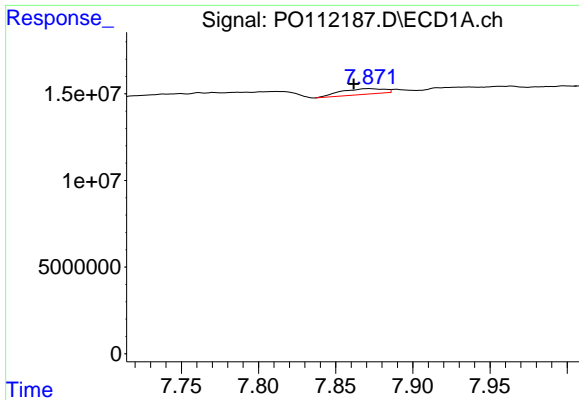
#42 AR-1268-2

R.T.: 7.662 min
 Delta R.T.: 0.006 min
 Response: 44673860
 Conc: 28.68 ng/ml



#42 AR-1268-2

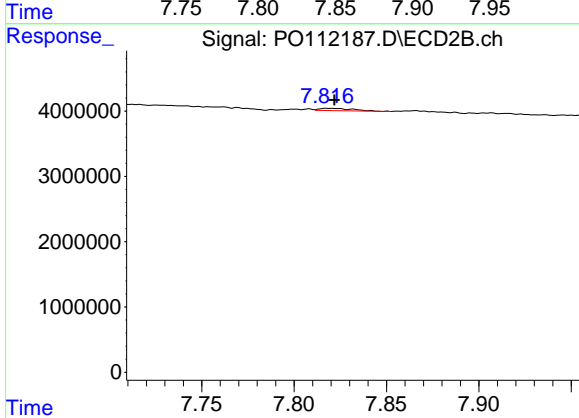
R.T.: 7.614 min
 Delta R.T.: -0.003 min
 Response: 14363601
 Conc: 34.43 ng/ml



#43 AR-1268-3

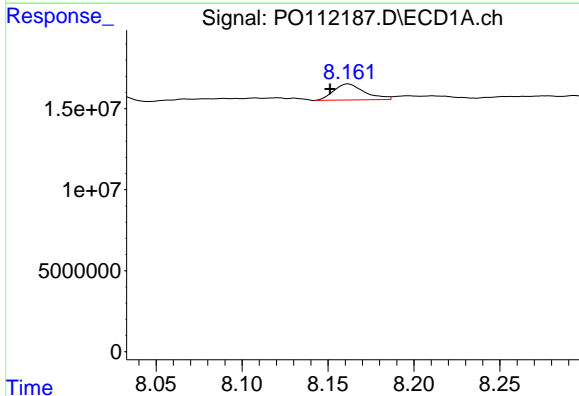
R.T.: 7.872 min
 Delta R.T.: 0.010 min
 Response: 6455489
 Conc: 4.97 ng/ml

Instrument :
 ECD_O
 ClientSampleId :
 PP24709



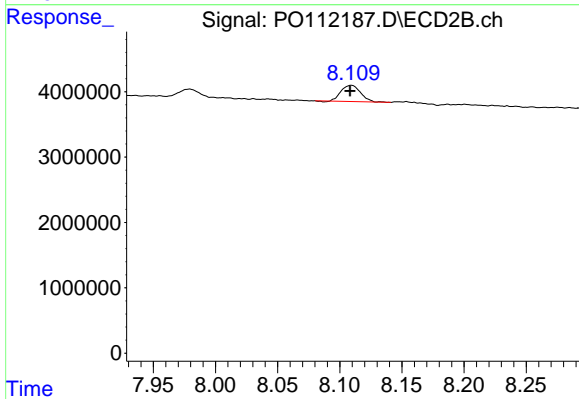
#43 AR-1268-3

R.T.: 7.818 min
 Delta R.T.: -0.004 min
 Response: 447894
 Conc: 1.42 ng/ml



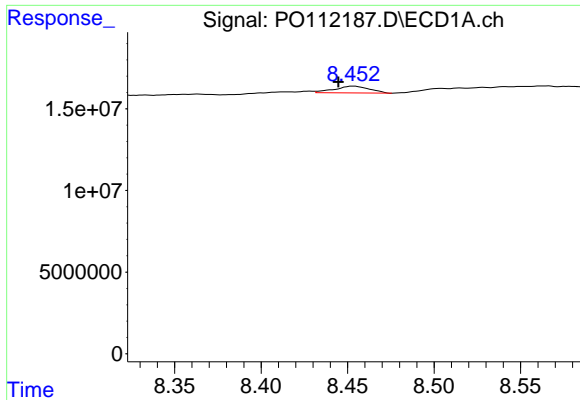
#44 AR-1268-4

R.T.: 8.162 min
 Delta R.T.: 0.011 min
 Response: 12386641
 Conc: 25.78 ng/ml



#44 AR-1268-4

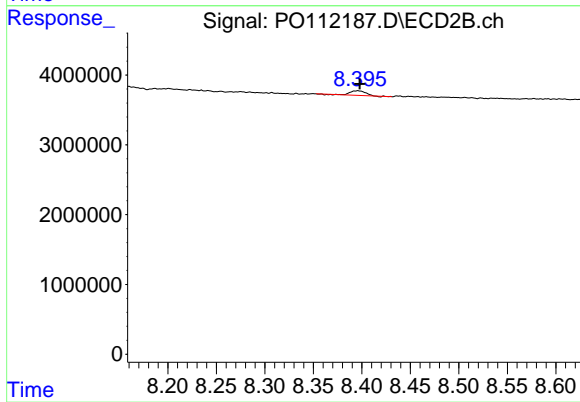
R.T.: 8.109 min
 Delta R.T.: 0.000 min
 Response: 2679944
 Conc: 24.03 ng/ml



#45 AR-1268-5

R.T.: 8.453 min
 Delta R.T.: 0.009 min
 Response: 5841134
 Conc: 1.79 ng/ml

Instrument :
 ECD_O
 ClientSampleId :
 PP24709



#45 AR-1268-5

R.T.: 8.396 min
 Delta R.T.: -0.002 min
 Response: 707747
 Conc: 0.97 ng/ml