

Data Path : Z:\pestpcbsrv\HPCHEM1\ECD_0\Data\P0071025\
 Data File : PO112189.D
 Signal(s) : Signal #1: ECD1A.ch Signal #2: ECD2B.ch
 Acq On : 10 Jul 2025 14:23
 Operator : YP/AJ
 Sample : Q2542-01
 Misc :
 ALS Vial : 10 Sample Multiplier: 1

Instrument :
 ECD_0
 ClientSampleId :
 VNJ-245

Integration File signal 1: autoint1.e
 Integration File signal 2: autoint2.e
 Quant Time: Jul 10 15:43:47 2025
 Quant Method : Z:\pestpcbsrv\HPCHEM1\ECD_0\methods\P0070825.M
 Quant Title : GC EXTRACTABLES
 QLast Update : Wed Jul 09 10:50:50 2025
 Response via : Initial Calibration
 Integrator: ChemStation

Volume Inj. : 2 µl
 Signal #1 Phase : ZB-MR1 Signal #2 Phase: ZB-MR2
 Signal #1 Info : 30Mx0.32mmx 0.50µ Signal #2 Info : 30M x 0.32mm x 0.25µm

Compound	RT#1	RT#2	Resp#1	Resp#2	ng/ml	ng/ml
System Monitoring Compounds						
1) SA Tetrachlo...	3.672	3.664	140.0E6	76393909	14.148	11.991
2) SA Decachlor...	8.702	8.648	50720786	15513591	7.419	9.001
Target Compounds						
3) L1 AR-1016-1	4.765	4.760	76994	495438	0.226	2.223 #
4) L1 AR-1016-2	4.765	4.775	76994	1388699	0.155	4.220 #
5) L1 AR-1016-3	4.843	4.960	302706	323214	0.935	1.903 #
6) L1 AR-1016-4	4.960	4.991	512533	509441	1.996	3.712 #
7) L1 AR-1016-5	5.223	5.202	3634965	907623	13.283	5.263 #
8) L2 AR-1221-1	3.893	3.873	1262585	208657	10.827	2.535 #
9) L2 AR-1221-2	3.973	3.964	2369283	1656689	30.052	27.912
10) L2 AR-1221-3	4.045	4.032	789974	323803	2.930	1.715 #
11) L3 AR-1232-1	4.045	4.032	789974	323803	3.680	2.157 #
12) L3 AR-1232-2	4.544	4.760	2122688	495438	18.680	3.236 #
13) L3 AR-1232-3	4.765	4.936	76994	220607	0.336	2.922 #
14) L3 AR-1232-4	4.960	5.023	512533	206800	4.484	3.134 #
15) L3 AR-1232-5	5.007	5.182	3820116	246937	52.045	3.325 #
16) L4 AR-1242-1	4.765	4.743	76994	393792	0.266	2.031 #
17) L4 AR-1242-2	4.765	4.760	76994	495438	0.181	1.748 #
18) L4 AR-1242-3	4.829	4.936	188594	220607	0.689	1.514 #
19) L4 AR-1242-4	4.960	5.023	512533	206800	2.275	1.458 #
20) L4 AR-1242-5	5.610	5.543	3961517	4062726	18.715	22.355
21) L5 AR-1248-1	4.765	4.743	76994	393792	0.339	2.551 #
22) L5 AR-1248-2	5.007	4.979	3820116	563157	12.390	2.737 #
23) L5 AR-1248-3	5.223	5.023	3634965	206800	8.924	0.963 #
24) L5 AR-1248-4	5.571	5.182	7637668	246937	13.233	0.954 #
25) L5 AR-1248-5	5.610	5.575	3961517	3208187	10.150	12.805 #
26) L6 AR-1254-1	5.571	5.543	7637668	4062726	12.417	10.659
27) L6 AR-1254-2	5.714	5.687	6553783	3938133	12.234	11.869
28) L6 AR-1254-3	6.121	6.089	7040307	1875599	8.386	3.891 #
29) L6 AR-1254-4	6.345	6.309	1914658	495004	3.980	1.899 #
30) L6 AR-1254-5	6.765	6.729	29410755	18082204	38.001	50.742 #
31) L7 AR-1260-1	6.244	6.217	2899309	3749975	5.784	13.366 #
32) L7 AR-1260-2	6.440	6.446	3242727	2906552	4.393	8.549 #
33) L7 AR-1260-3	6.797	6.588	5002726	337605	7.632	1.225 #
34) L7 AR-1260-4	7.076	7.063	2797239	980562	6.427	4.887
35) L7 AR-1260-5	7.309	7.270	4108002	1331765	3.254	2.974
36) L8 AR-1262-1	6.797	6.759	5002726	2665050	4.897	6.543 #
37) L8 AR-1262-2	7.309	7.270	4108002	1331765	2.506	2.598
38) L8 AR-1262-3	7.599	7.567	2721041	1467492	4.239	8.174 #
39) L8 AR-1262-4	7.663	7.613	699531	1124913	0.653	3.867 #
40) L8 AR-1262-5	8.156	8.128	735293	14454	1.641	0.137 #
41) L9 AR-1268-1	7.599	7.567	2721041	1467492	1.481	2.986 #

Data Path : Z:\pestpcbsrv\HPCHEM1\ECD_0\Data\P0071025\
 Data File : P0112189.D
 Signal(s) : Signal #1: ECD1A.ch Signal #2: ECD2B.ch
 Acq On : 10 Jul 2025 14:23
 Operator : YP/AJ
 Sample : Q2542-01
 Misc :
 ALS Vial : 10 Sample Multiplier: 1

Instrument :
 ECD_0
 ClientSampleId :
 VNJ-245

Integration File signal 1: autoint1.e
 Integration File signal 2: autoint2.e
 Quant Time: Jul 10 15:43:47 2025
 Quant Method : Z:\pestpcbsrv\HPCHEM1\ECD_0\methods\P0070825.M
 Quant Title : GC EXTRACTABLES
 QLast Update : Wed Jul 09 10:50:50 2025
 Response via : Initial Calibration
 Integrator: ChemStation

Volume Inj. : 2 µl
 Signal #1 Phase : ZB-MR1 Signal #2 Phase: ZB-MR2
 Signal #1 Info : 30Mx0.32mmx 0.50µ Signal #2 Info : 30M x 0.32mm x 0.25µm

	Compound	RT#1	RT#2	Resp#1	Resp#2	ng/ml	ng/ml
42)	L9 AR-1268-2	7.663	7.613	699531	1124913	0.449	2.696 #
43)	L9 AR-1268-3	7.868	7.829	956568	118776	0.736	0.375 #
44)	L9 AR-1268-4	8.156	8.128	735293	14454	1.531	0.130 #
45)	L9 AR-1268-5	8.441	8.391	1124271	369384	0.344	0.508 #

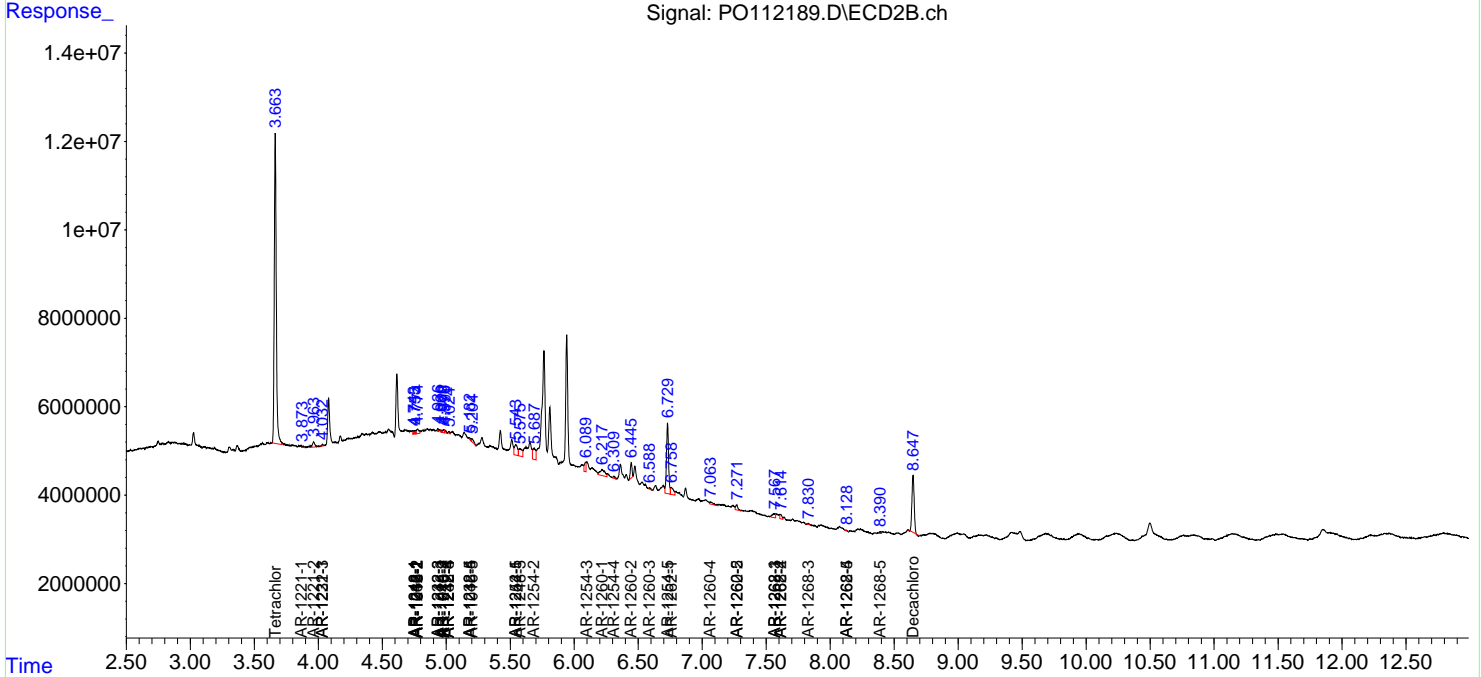
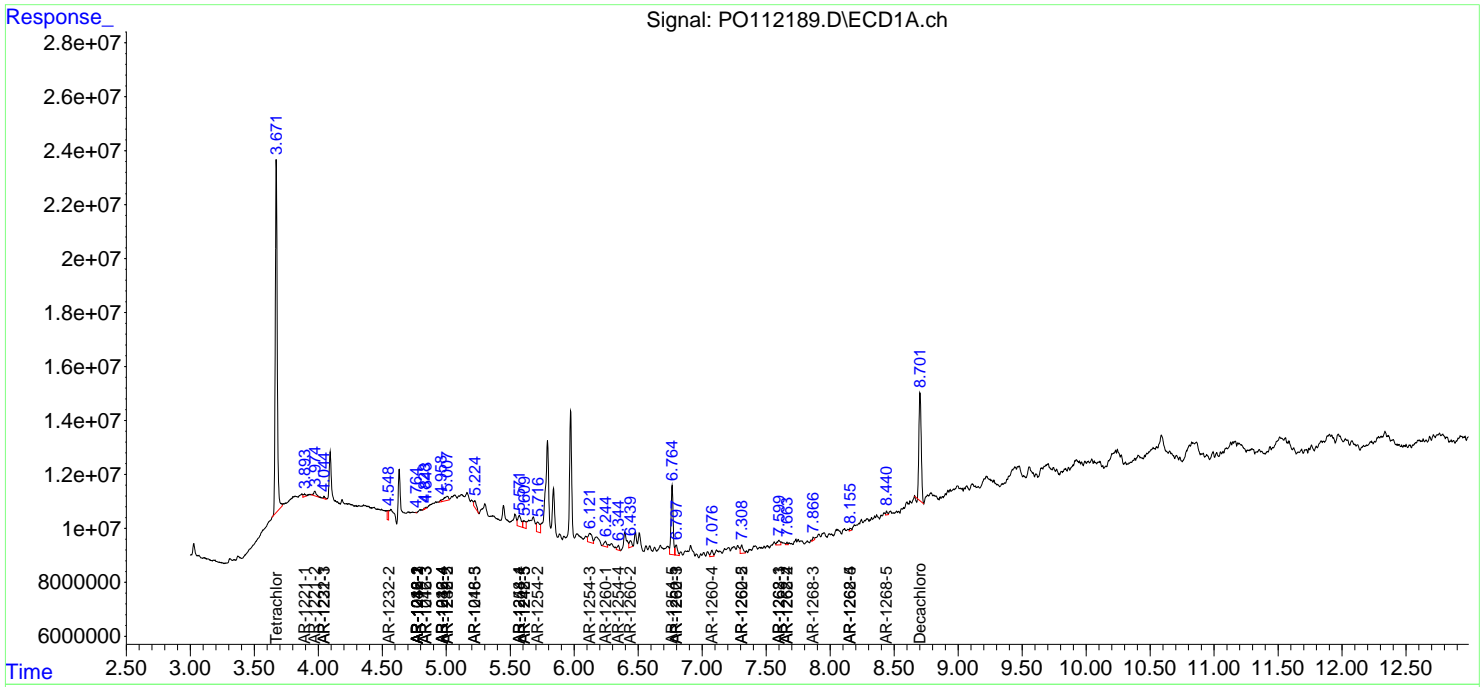
(f)=RT Delta > 1/2 Window (#)=Amounts differ by > 25% (m)=manual int.

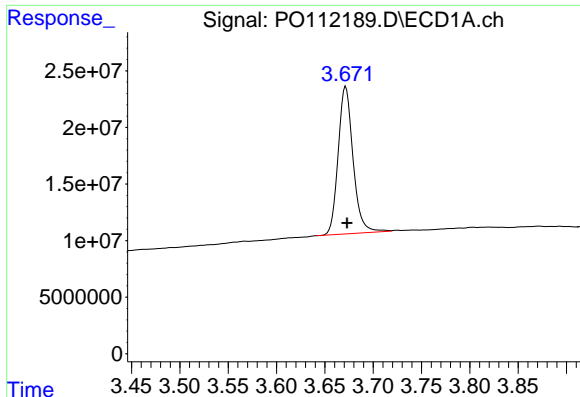
Data Path : Z:\pestpcbsrv\HPCHEM1\ECD_O\Data\PO071025\
 Data File : PO112189.D
 Signal(s) : Signal #1: ECD1A.ch Signal #2: ECD2B.ch
 Acq On : 10 Jul 2025 14:23
 Operator : YP/AJ
 Sample : Q2542-01
 Misc :
 ALS Vial : 10 Sample Multiplier: 1

Instrument :
 ECD_O
 ClientSampleId :
 VNJ-245

Integration File signal 1: autoint1.e
 Integration File signal 2: autoint2.e
 Quant Time: Jul 10 15:43:47 2025
 Quant Method : Z:\pestpcbsrv\HPCHEM1\ECD_O\methods\PO070825.M
 Quant Title : GC EXTRACTABLES
 QLast Update : Wed Jul 09 10:50:50 2025
 Response via : Initial Calibration
 Integrator: ChemStation

Volume Inj. : 2 µl
 Signal #1 Phase : ZB-MR1 Signal #2 Phase: ZB-MR2
 Signal #1 Info : 30Mx0.32mmx 0.50µ Signal #2 Info : 30M x 0.32mm x 0.25µm

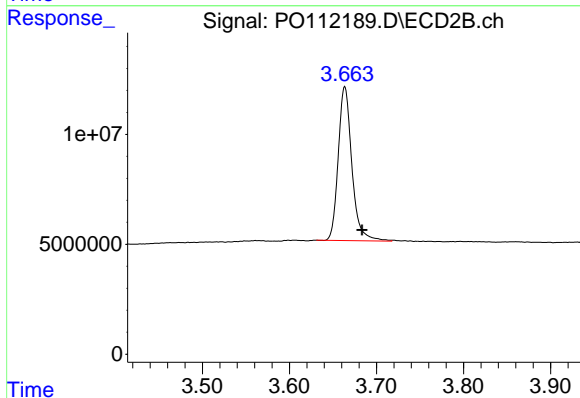




#1 Tetrachloro-m-xylene

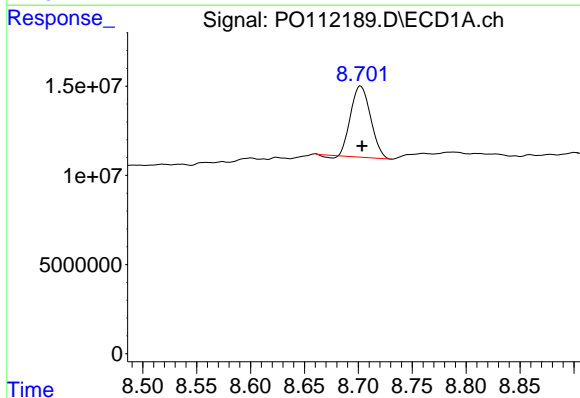
R.T.: 3.672 min
 Delta R.T.: -0.001 min
 Response: 139987364
 Conc: 14.15 ng/ml

Instrument :
 ECD_O
 ClientSampleId :
 VNJ-245



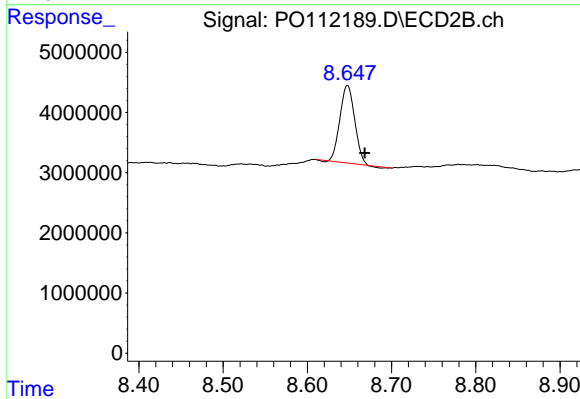
#1 Tetrachloro-m-xylene

R.T.: 3.664 min
 Delta R.T.: -0.020 min
 Response: 76393909
 Conc: 11.99 ng/ml



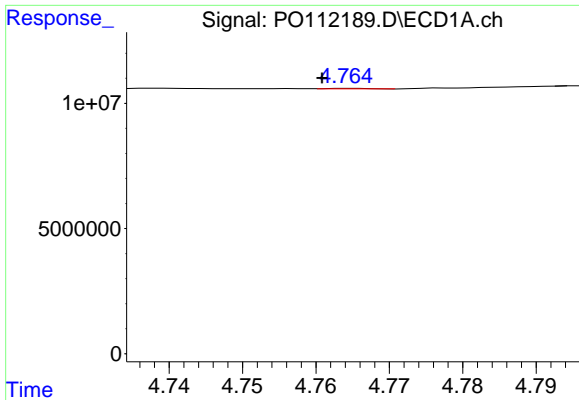
#2 Decachlorobiphenyl

R.T.: 8.702 min
 Delta R.T.: -0.001 min
 Response: 50720786
 Conc: 7.42 ng/ml



#2 Decachlorobiphenyl

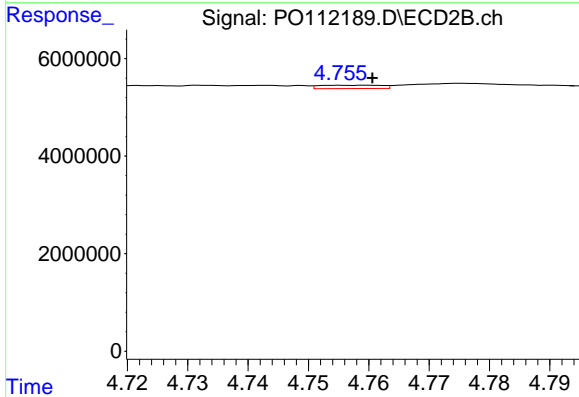
R.T.: 8.648 min
 Delta R.T.: -0.020 min
 Response: 15513591
 Conc: 9.00 ng/ml



#3 AR-1016-1

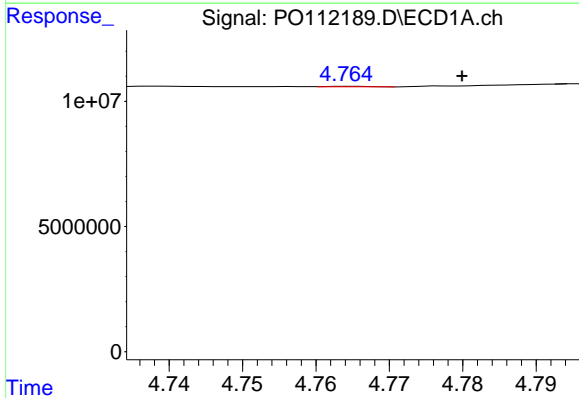
R.T.: 4.765 min
 Delta R.T.: 0.004 min
 Response: 76994
 Conc: 0.23 ng/ml

Instrument :
 ECD_O
 ClientSampleId :
 VNJ-245



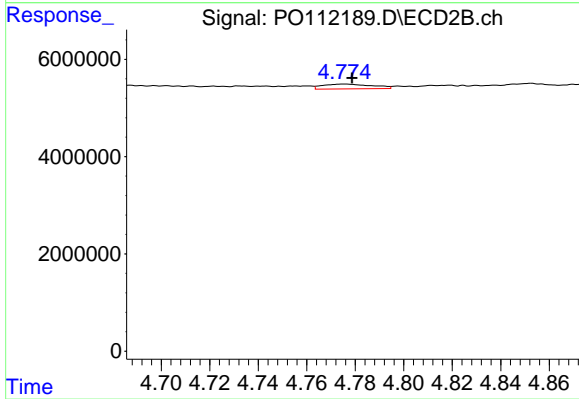
#3 AR-1016-1

R.T.: 4.760 min
 Delta R.T.: 0.000 min
 Response: 495438
 Conc: 2.22 ng/ml



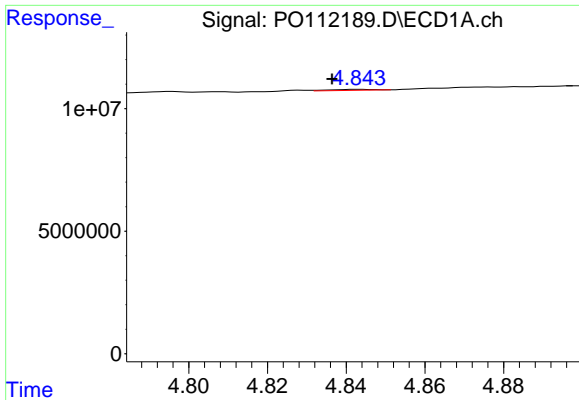
#4 AR-1016-2

R.T.: 4.765 min
 Delta R.T.: -0.015 min
 Response: 76994
 Conc: 0.15 ng/ml



#4 AR-1016-2

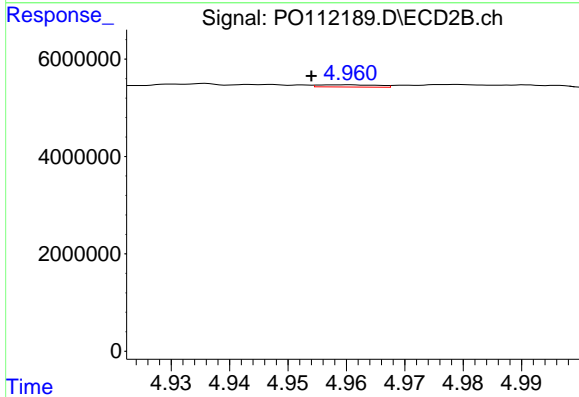
R.T.: 4.775 min
 Delta R.T.: -0.003 min
 Response: 1388699
 Conc: 4.22 ng/ml



#5 AR-1016-3

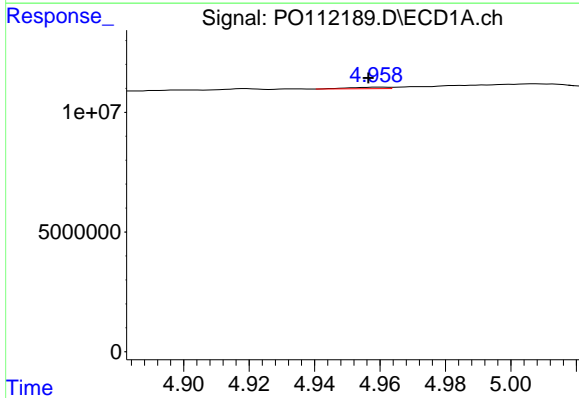
R.T.: 4.843 min
 Delta R.T.: 0.007 min
 Response: 302706
 Conc: 0.94 ng/ml

Instrument :
 ECD_O
 ClientSampleId :
 VNJ-245



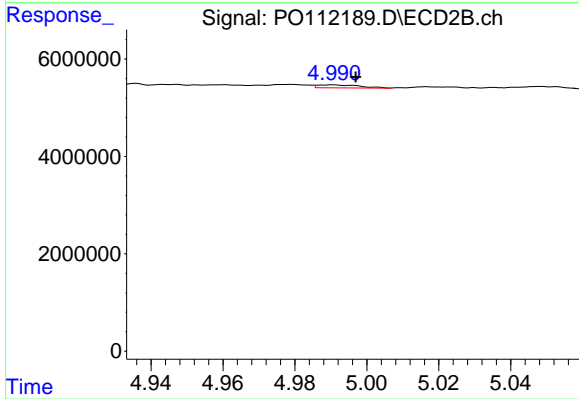
#5 AR-1016-3

R.T.: 4.960 min
 Delta R.T.: 0.006 min
 Response: 323214
 Conc: 1.90 ng/ml



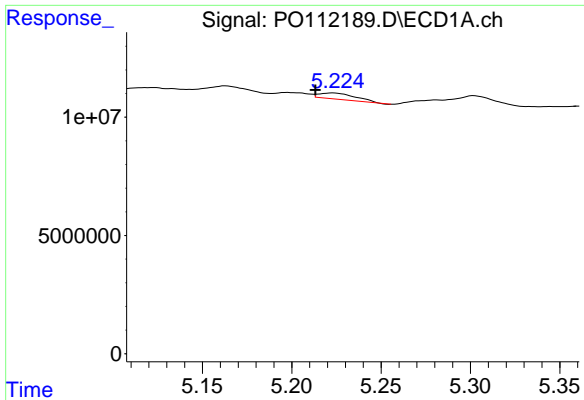
#6 AR-1016-4

R.T.: 4.960 min
 Delta R.T.: 0.003 min
 Response: 512533
 Conc: 2.00 ng/ml



#6 AR-1016-4

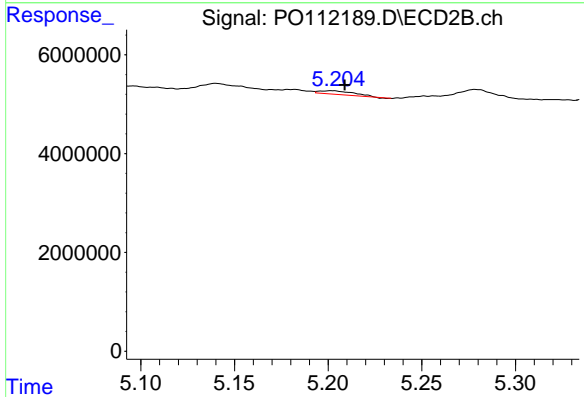
R.T.: 4.991 min
 Delta R.T.: -0.006 min
 Response: 509441
 Conc: 3.71 ng/ml



#7 AR-1016-5

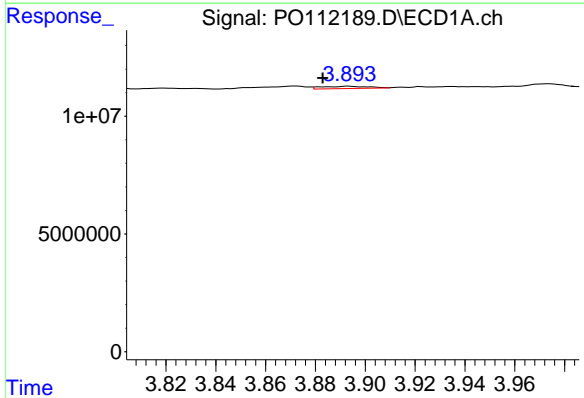
R.T.: 5.223 min
 Delta R.T.: 0.010 min
 Response: 3634965
 Conc: 13.28 ng/ml

Instrument :
 ECD_O
 ClientSampleId :
 VNJ-245



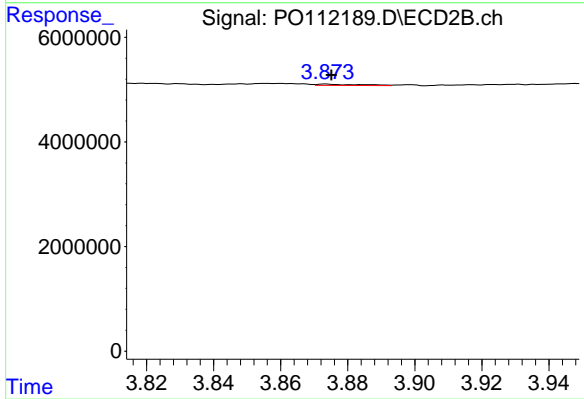
#7 AR-1016-5

R.T.: 5.202 min
 Delta R.T.: -0.007 min
 Response: 907623
 Conc: 5.26 ng/ml



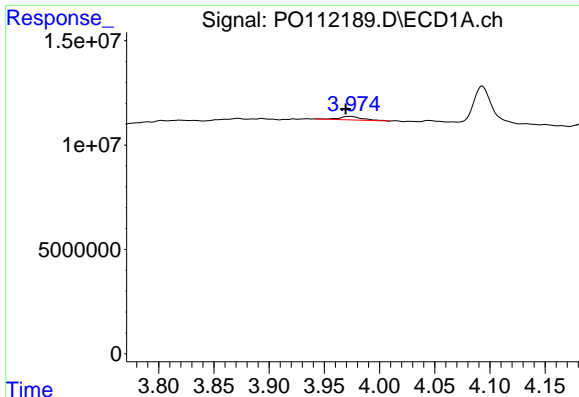
#8 AR-1221-1

R.T.: 3.893 min
 Delta R.T.: 0.010 min
 Response: 1262585
 Conc: 10.83 ng/ml



#8 AR-1221-1

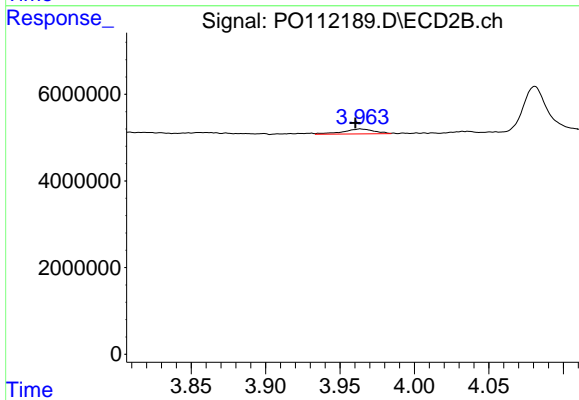
R.T.: 3.873 min
 Delta R.T.: -0.002 min
 Response: 208657
 Conc: 2.54 ng/ml



#9 AR-1221-2

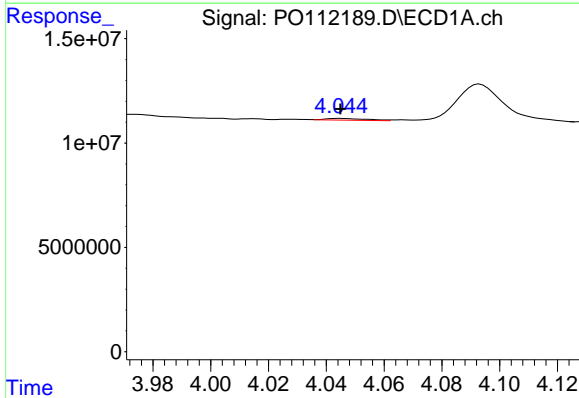
R.T.: 3.973 min
 Delta R.T.: 0.004 min
 Response: 2369283
 Conc: 30.05 ng/ml

Instrument :
 ECD_O
 ClientSampleId :
 VNJ-245



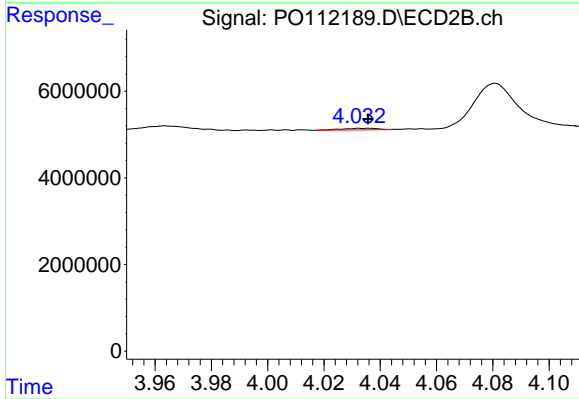
#9 AR-1221-2

R.T.: 3.964 min
 Delta R.T.: 0.003 min
 Response: 1656689
 Conc: 27.91 ng/ml



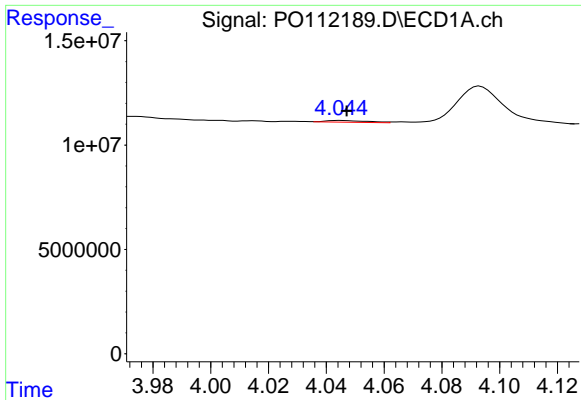
#10 AR-1221-3

R.T.: 4.045 min
 Delta R.T.: 0.000 min
 Response: 789974
 Conc: 2.93 ng/ml



#10 AR-1221-3

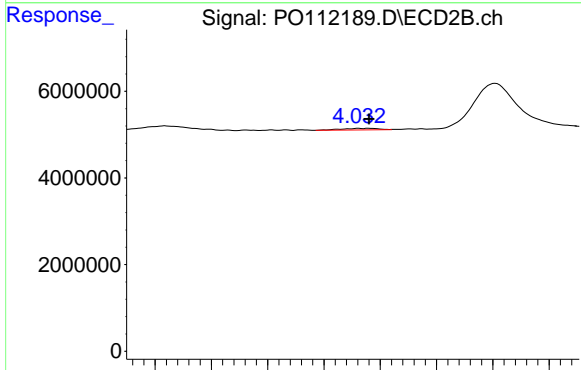
R.T.: 4.032 min
 Delta R.T.: -0.003 min
 Response: 323803
 Conc: 1.72 ng/ml



#11 AR-1232-1

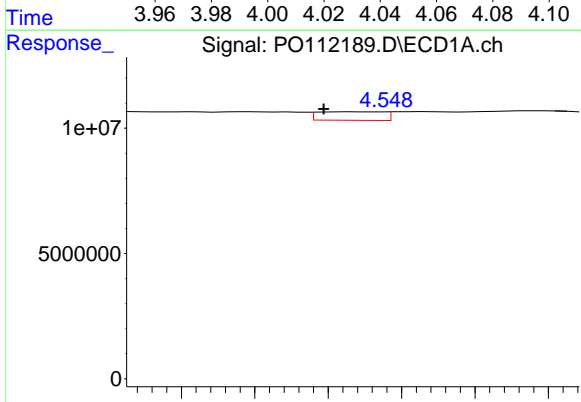
R.T.: 4.045 min
 Delta R.T.: -0.002 min
 Response: 789974
 Conc: 3.68 ng/ml

Instrument :
 ECD_O
 ClientSampleId :
 VNJ-245



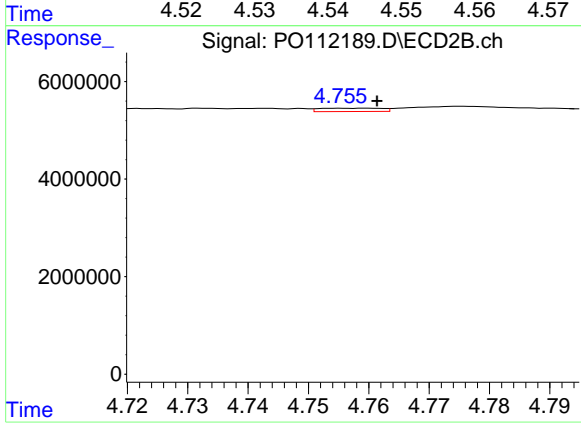
#11 AR-1232-1

R.T.: 4.032 min
 Delta R.T.: -0.004 min
 Response: 323803
 Conc: 2.16 ng/ml



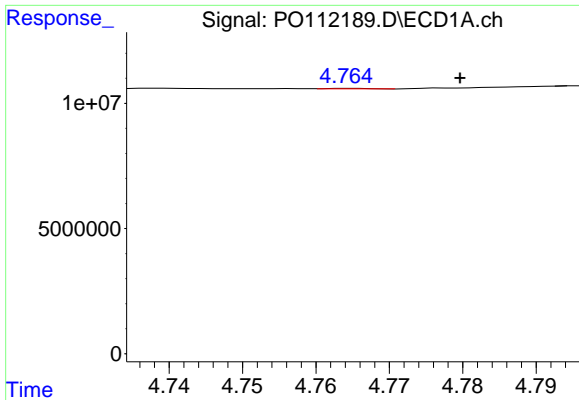
#12 AR-1232-2

R.T.: 4.544 min
 Delta R.T.: 0.004 min
 Response: 2122688
 Conc: 18.68 ng/ml



#12 AR-1232-2

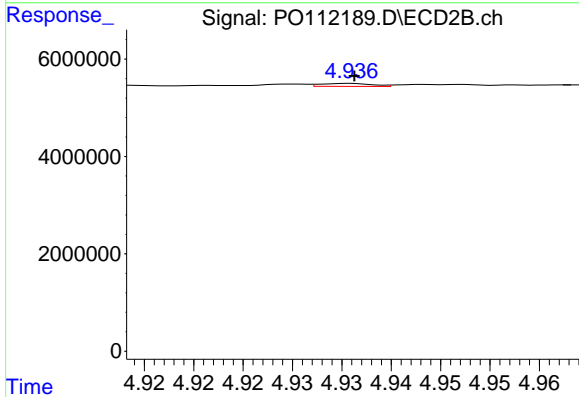
R.T.: 4.760 min
 Delta R.T.: -0.002 min
 Response: 495438
 Conc: 3.24 ng/ml



#13 AR-1232-3

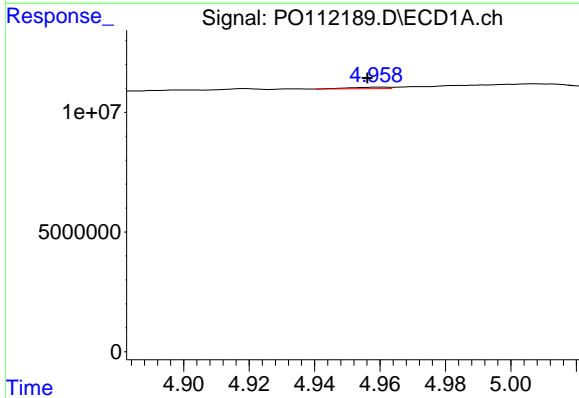
R.T.: 4.765 min
 Delta R.T.: -0.015 min
 Response: 76994
 Conc: 0.34 ng/ml

Instrument :
 ECD_O
 ClientSampleId :
 VNJ-245



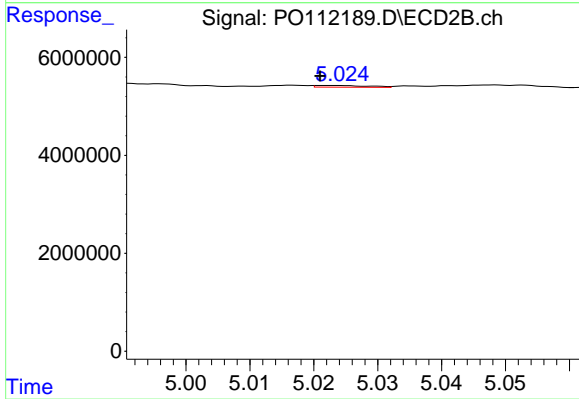
#13 AR-1232-3

R.T.: 4.936 min
 Delta R.T.: 0.000 min
 Response: 220607
 Conc: 2.92 ng/ml



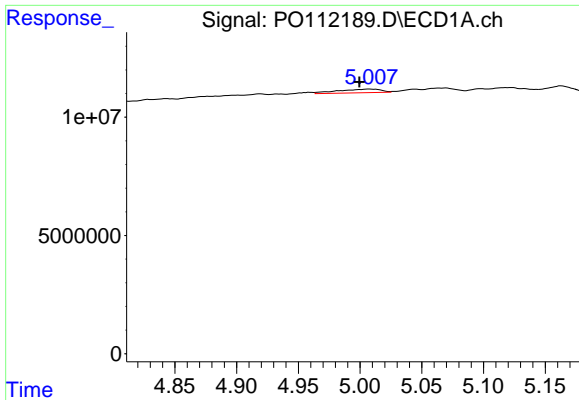
#14 AR-1232-4

R.T.: 4.960 min
 Delta R.T.: 0.004 min
 Response: 512533
 Conc: 4.48 ng/ml



#14 AR-1232-4

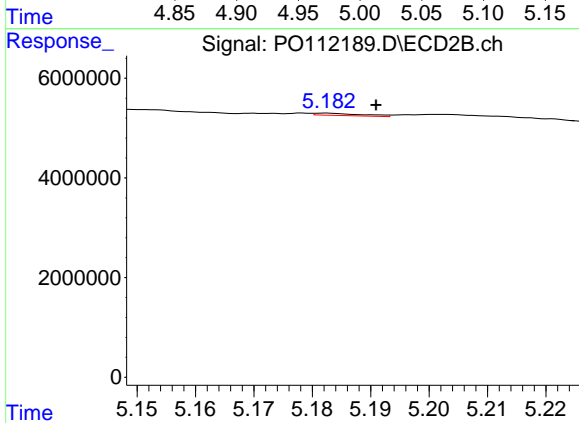
R.T.: 5.023 min
 Delta R.T.: 0.002 min
 Response: 206800
 Conc: 3.13 ng/ml



#15 AR-1232-5

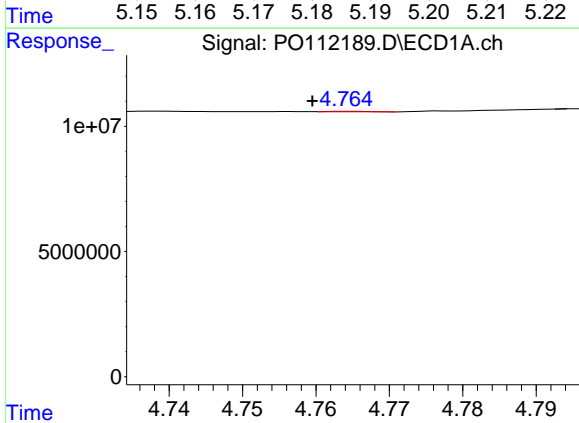
R.T.: 5.007 min
 Delta R.T.: 0.008 min
 Response: 3820116
 Conc: 52.05 ng/ml

Instrument : ECD_O
 ClientSampleId : VNJ-245



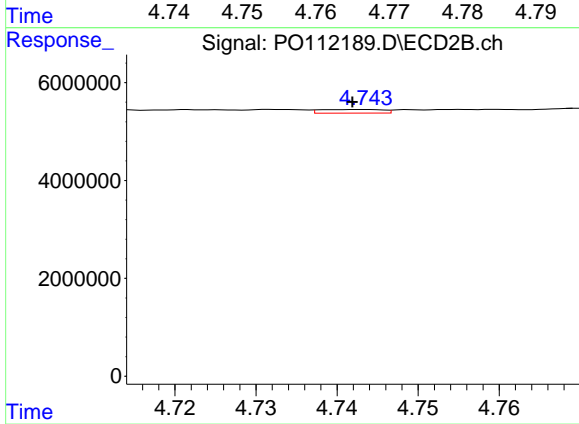
#15 AR-1232-5

R.T.: 5.182 min
 Delta R.T.: -0.009 min
 Response: 246937
 Conc: 3.33 ng/ml



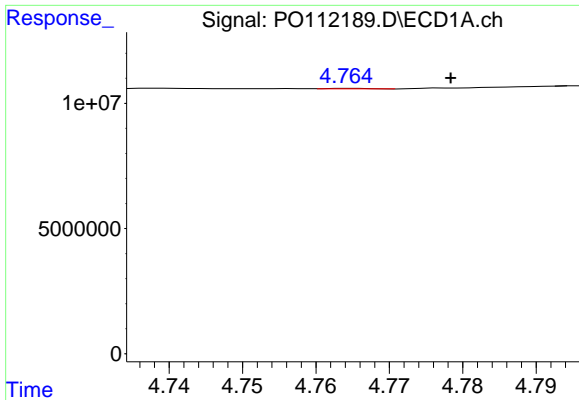
#16 AR-1242-1

R.T.: 4.765 min
 Delta R.T.: 0.005 min
 Response: 76994
 Conc: 0.27 ng/ml



#16 AR-1242-1

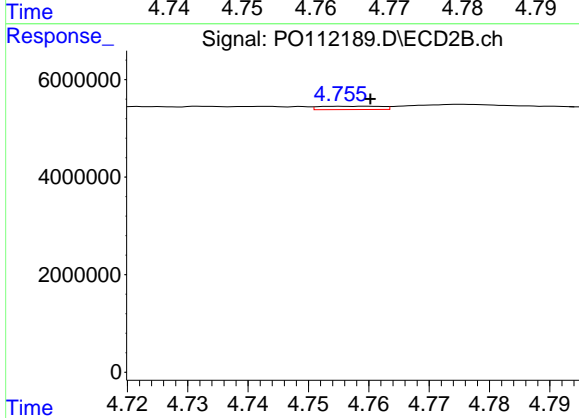
R.T.: 4.743 min
 Delta R.T.: 0.002 min
 Response: 393792
 Conc: 2.03 ng/ml



#17 AR-1242-2

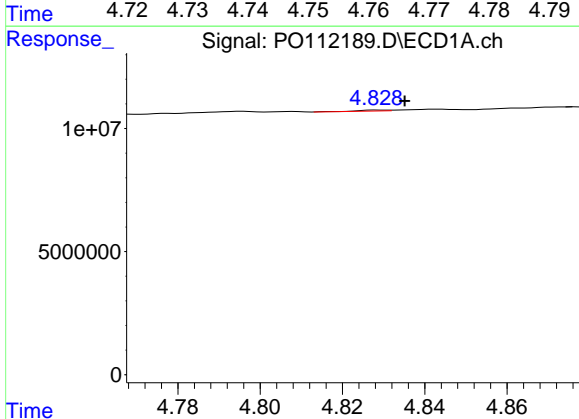
R.T.: 4.765 min
 Delta R.T.: -0.014 min
 Response: 76994
 Conc: 0.18 ng/ml

Instrument :
 ECD_O
 ClientSampleId :
 VNJ-245



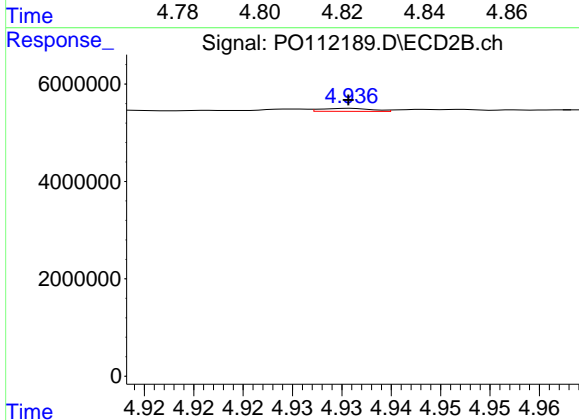
#17 AR-1242-2

R.T.: 4.760 min
 Delta R.T.: 0.000 min
 Response: 495438
 Conc: 1.75 ng/ml



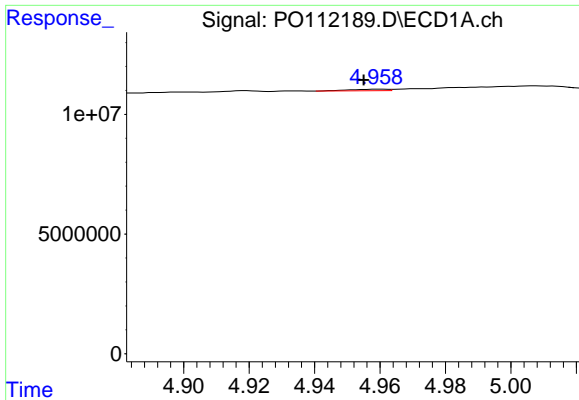
#18 AR-1242-3

R.T.: 4.829 min
 Delta R.T.: -0.007 min
 Response: 188594
 Conc: 0.69 ng/ml



#18 AR-1242-3

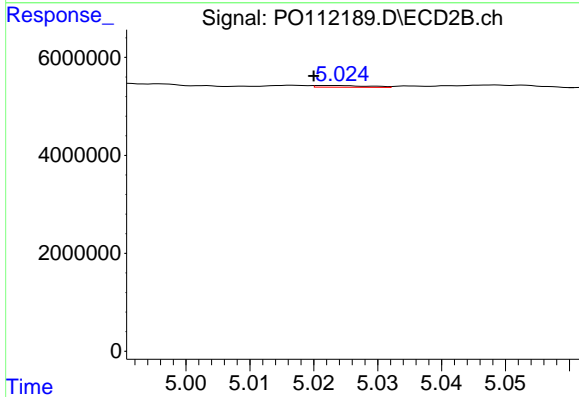
R.T.: 4.936 min
 Delta R.T.: 0.000 min
 Response: 220607
 Conc: 1.51 ng/ml



#19 AR-1242-4

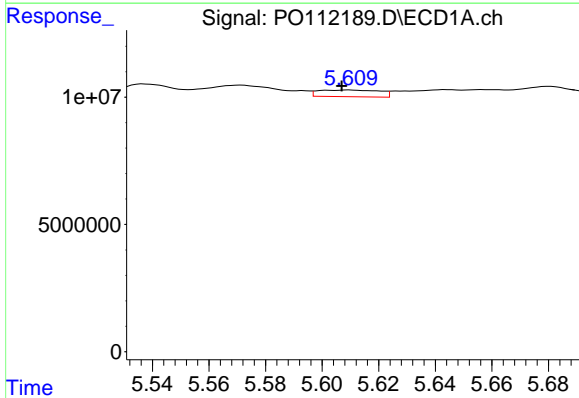
R.T.: 4.960 min
 Delta R.T.: 0.005 min
 Response: 512533
 Conc: 2.27 ng/ml

Instrument :
 ECD_O
 ClientSampleId :
 VNJ-245



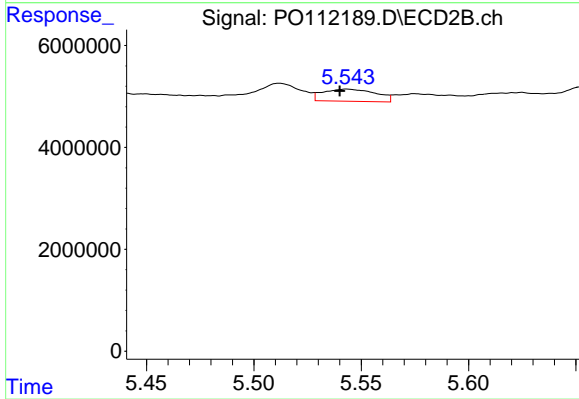
#19 AR-1242-4

R.T.: 5.023 min
 Delta R.T.: 0.003 min
 Response: 206800
 Conc: 1.46 ng/ml



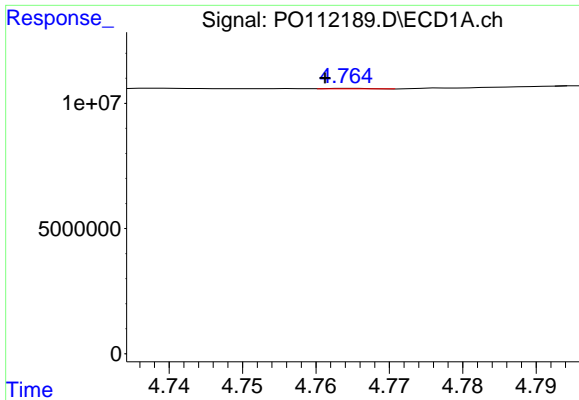
#20 AR-1242-5

R.T.: 5.610 min
 Delta R.T.: 0.003 min
 Response: 3961517
 Conc: 18.72 ng/ml



#20 AR-1242-5

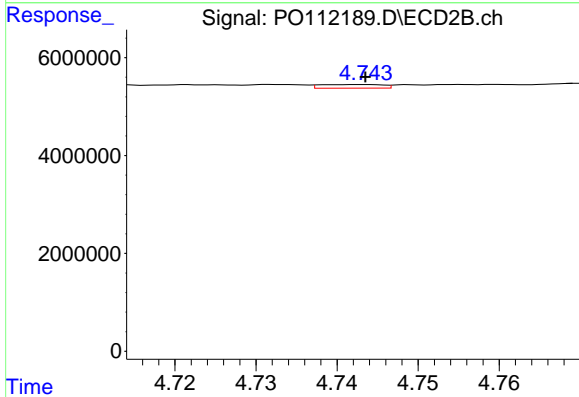
R.T.: 5.543 min
 Delta R.T.: 0.003 min
 Response: 4062726
 Conc: 22.36 ng/ml



#21 AR-1248-1

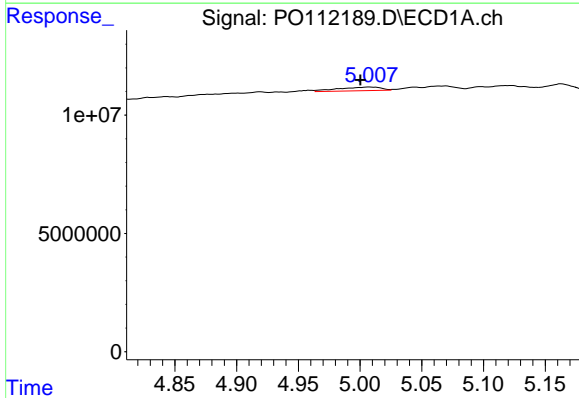
R.T.: 4.765 min
 Delta R.T.: 0.003 min
 Response: 76994
 Conc: 0.34 ng/ml

Instrument :
 ECD_O
 ClientSampleId :
 VNJ-245



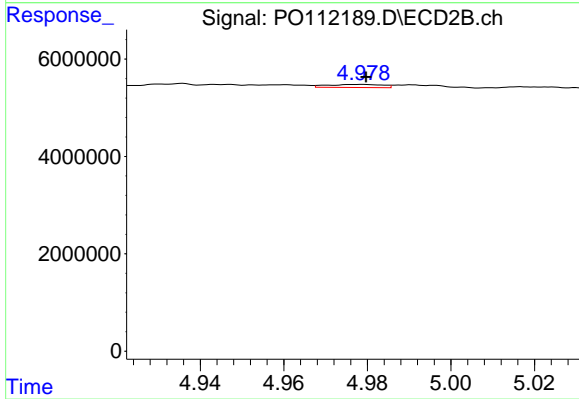
#21 AR-1248-1

R.T.: 4.743 min
 Delta R.T.: 0.000 min
 Response: 393792
 Conc: 2.55 ng/ml



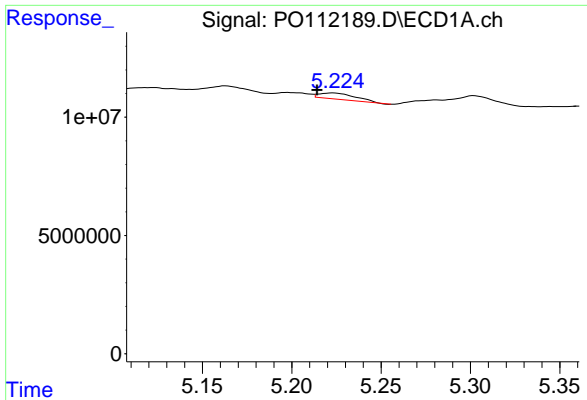
#22 AR-1248-2

R.T.: 5.007 min
 Delta R.T.: 0.007 min
 Response: 3820116
 Conc: 12.39 ng/ml



#22 AR-1248-2

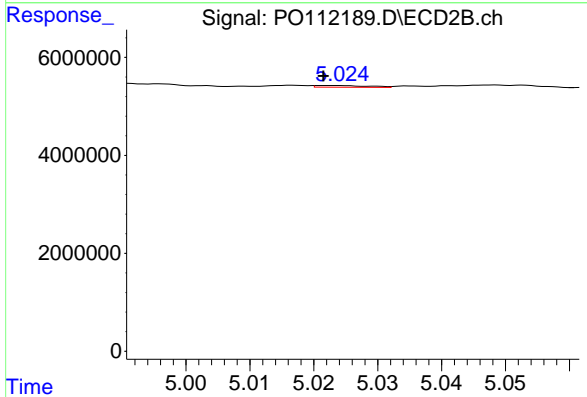
R.T.: 4.979 min
 Delta R.T.: 0.000 min
 Response: 563157
 Conc: 2.74 ng/ml



#23 AR-1248-3

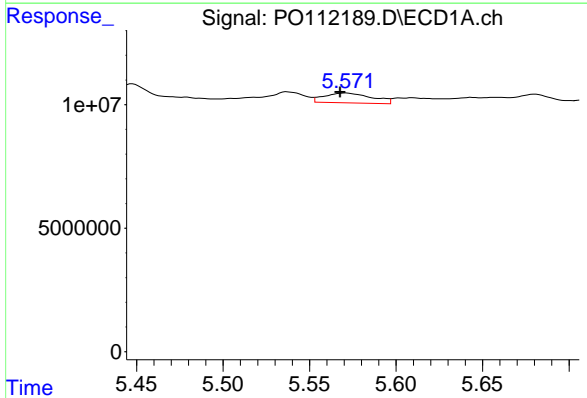
R.T.: 5.223 min
 Delta R.T.: 0.009 min
 Response: 3634965
 Conc: 8.92 ng/ml

Instrument :
 ECD_O
 ClientSampleId :
 VNJ-245



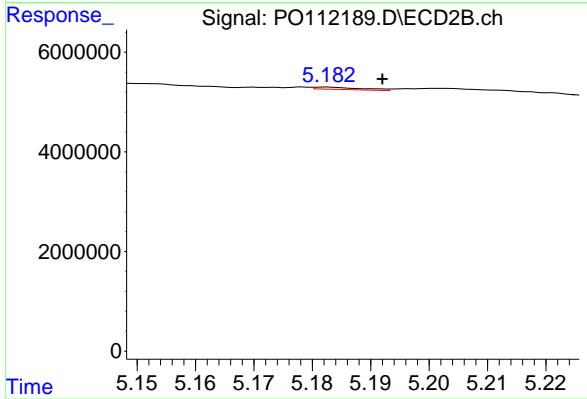
#23 AR-1248-3

R.T.: 5.023 min
 Delta R.T.: 0.002 min
 Response: 206800
 Conc: 0.96 ng/ml



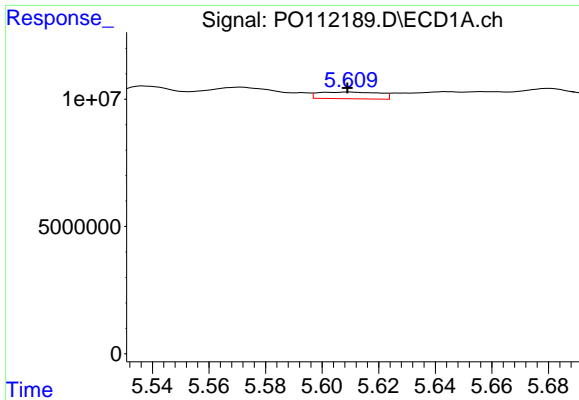
#24 AR-1248-4

R.T.: 5.571 min
 Delta R.T.: 0.003 min
 Response: 7637668
 Conc: 13.23 ng/ml



#24 AR-1248-4

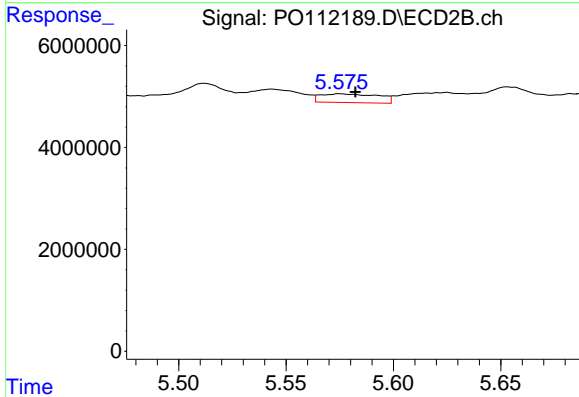
R.T.: 5.182 min
 Delta R.T.: -0.010 min
 Response: 246937
 Conc: 0.95 ng/ml



#25 AR-1248-5

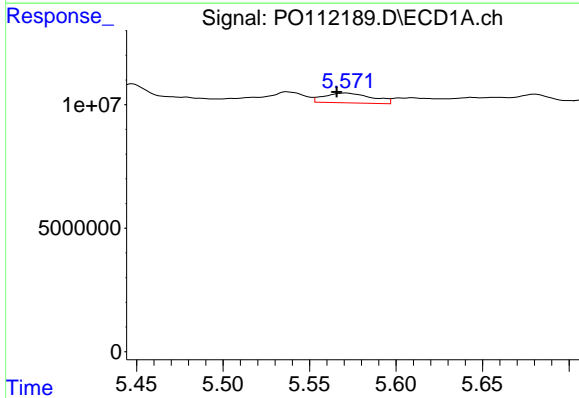
R.T.: 5.610 min
 Delta R.T.: 0.000 min
 Response: 3961517
 Conc: 10.15 ng/ml

Instrument :
 ECD_O
 ClientSampleId :
 VNJ-245



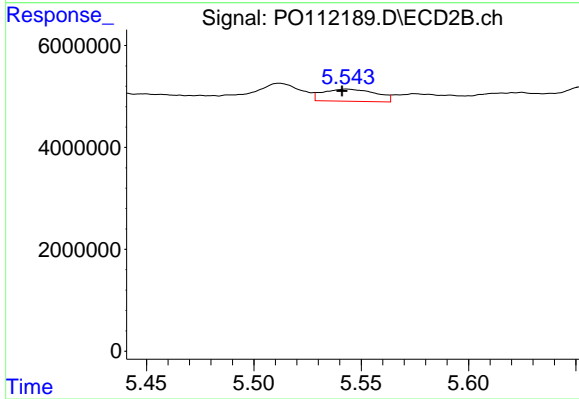
#25 AR-1248-5

R.T.: 5.575 min
 Delta R.T.: -0.007 min
 Response: 3208187
 Conc: 12.80 ng/ml



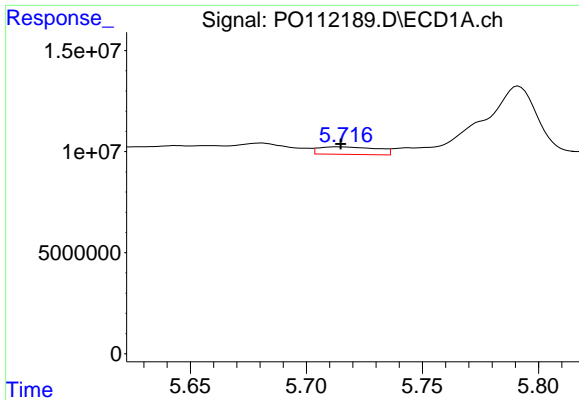
#26 AR-1254-1

R.T.: 5.571 min
 Delta R.T.: 0.005 min
 Response: 7637668
 Conc: 12.42 ng/ml



#26 AR-1254-1

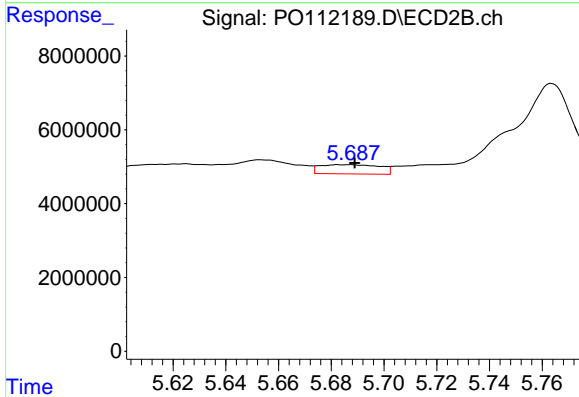
R.T.: 5.543 min
 Delta R.T.: 0.002 min
 Response: 4062726
 Conc: 10.66 ng/ml



#27 AR-1254-2

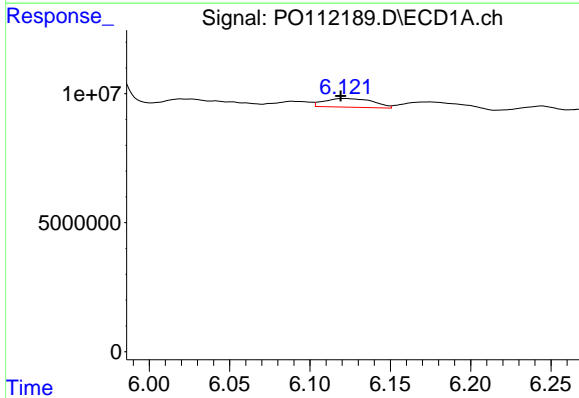
R.T.: 5.714 min
 Delta R.T.: 0.000 min
 Response: 6553783
 Conc: 12.23 ng/ml

Instrument :
 ECD_O
 ClientSampleId :
 VNJ-245



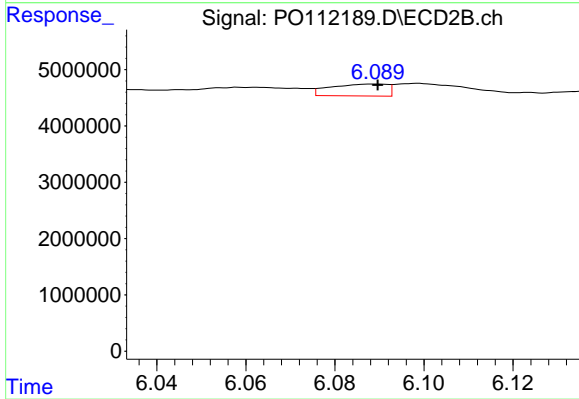
#27 AR-1254-2

R.T.: 5.687 min
 Delta R.T.: -0.002 min
 Response: 3938133
 Conc: 11.87 ng/ml



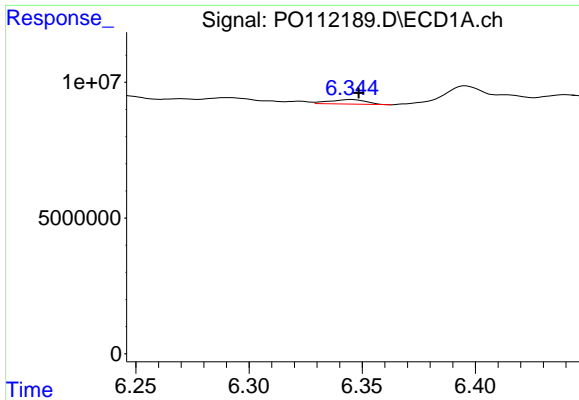
#28 AR-1254-3

R.T.: 6.121 min
 Delta R.T.: 0.002 min
 Response: 7040307
 Conc: 8.39 ng/ml



#28 AR-1254-3

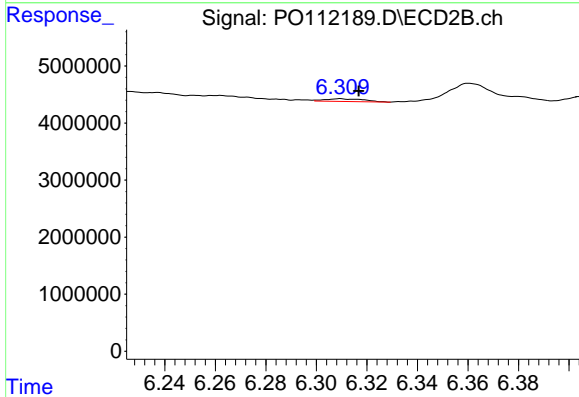
R.T.: 6.089 min
 Delta R.T.: 0.000 min
 Response: 1875599
 Conc: 3.89 ng/ml



#29 AR-1254-4

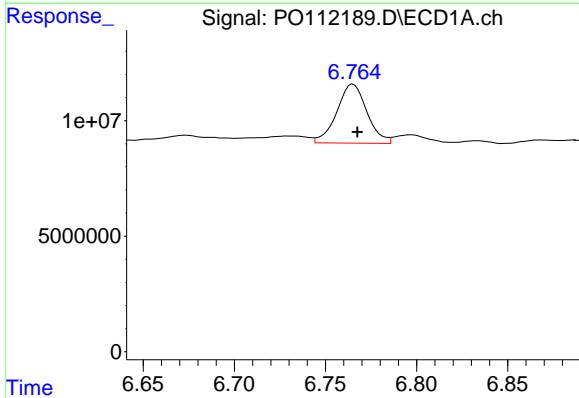
R.T.: 6.345 min
 Delta R.T.: -0.003 min
 Response: 1914658
 Conc: 3.98 ng/ml

Instrument :
 ECD_O
 ClientSampleId :
 VNJ-245



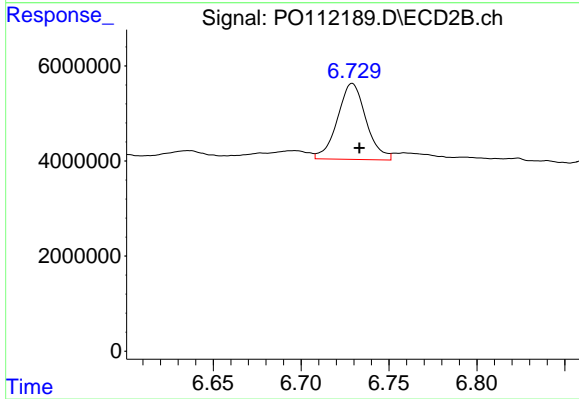
#29 AR-1254-4

R.T.: 6.309 min
 Delta R.T.: -0.007 min
 Response: 495004
 Conc: 1.90 ng/ml



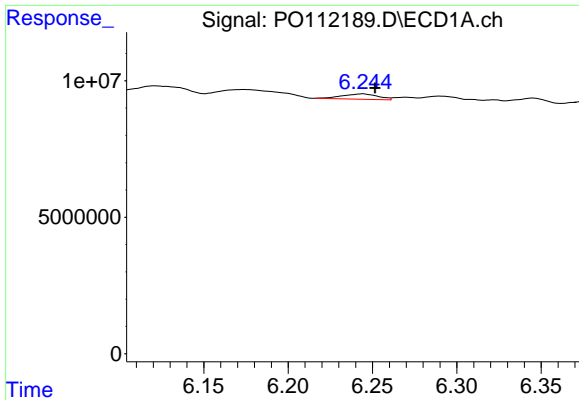
#30 AR-1254-5

R.T.: 6.765 min
 Delta R.T.: -0.002 min
 Response: 29410755
 Conc: 38.00 ng/ml



#30 AR-1254-5

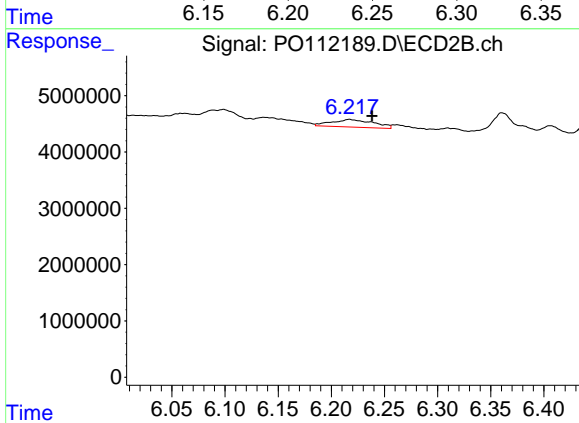
R.T.: 6.729 min
 Delta R.T.: -0.004 min
 Response: 18082204
 Conc: 50.74 ng/ml



#31 AR-1260-1

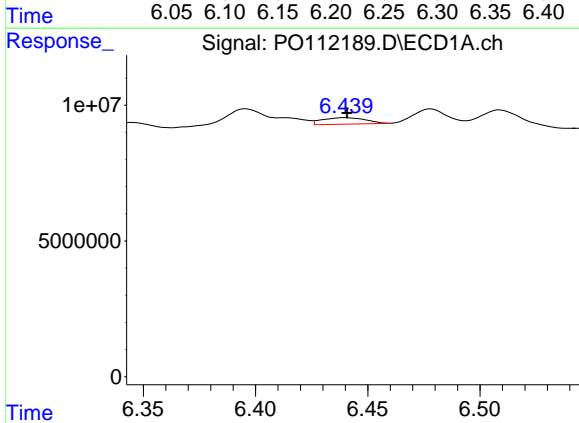
R.T.: 6.244 min
 Delta R.T.: -0.007 min
 Response: 2899309
 Conc: 5.78 ng/ml

Instrument :
 ECD_O
 ClientSampleId :
 VNJ-245



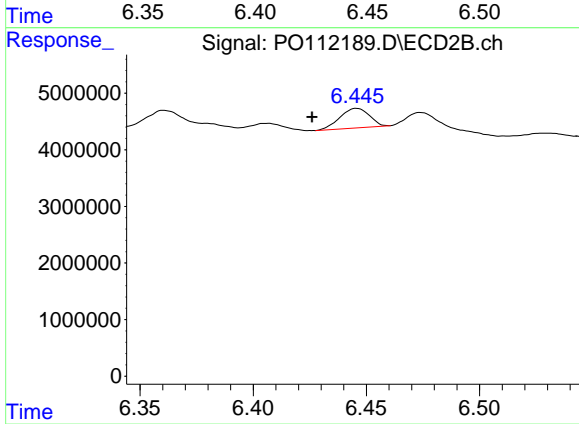
#31 AR-1260-1

R.T.: 6.217 min
 Delta R.T.: -0.021 min
 Response: 3749975
 Conc: 13.37 ng/ml



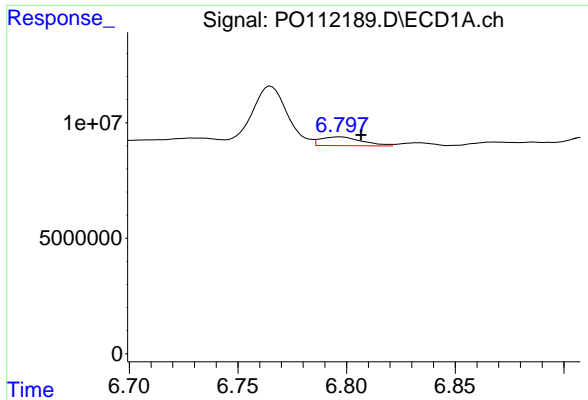
#32 AR-1260-2

R.T.: 6.440 min
 Delta R.T.: 0.000 min
 Response: 3242727
 Conc: 4.39 ng/ml



#32 AR-1260-2

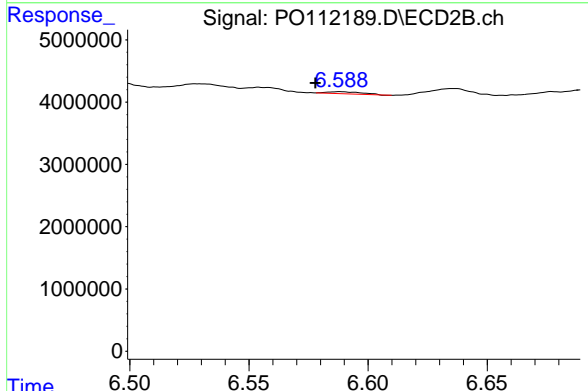
R.T.: 6.446 min
 Delta R.T.: 0.020 min
 Response: 2906552
 Conc: 8.55 ng/ml



#33 AR-1260-3

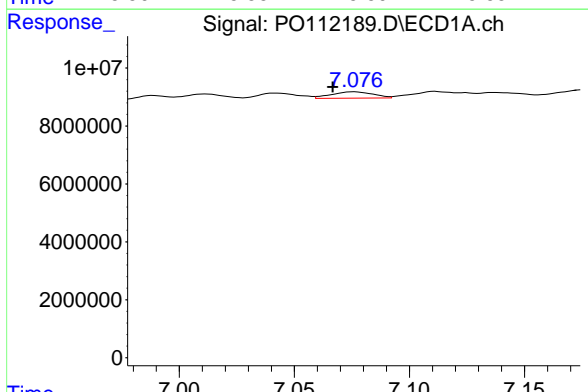
R.T.: 6.797 min
 Delta R.T.: -0.010 min
 Response: 5002726
 Conc: 7.63 ng/ml

Instrument : ECD_O
 ClientSampleId : VNJ-245



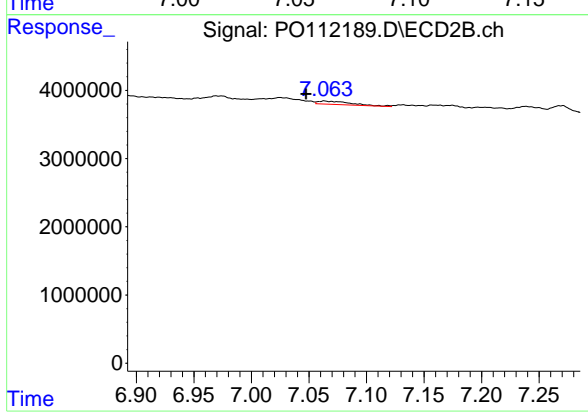
#33 AR-1260-3

R.T.: 6.588 min
 Delta R.T.: 0.010 min
 Response: 337605
 Conc: 1.23 ng/ml



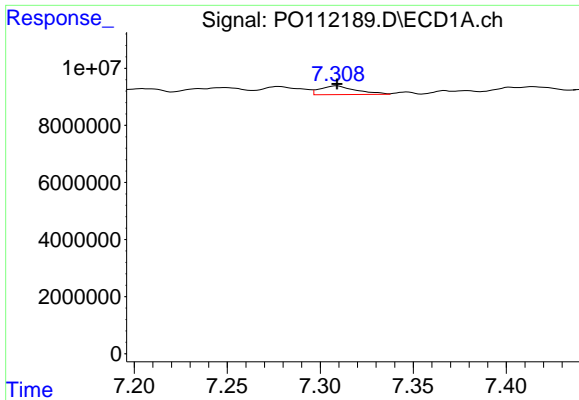
#34 AR-1260-4

R.T.: 7.076 min
 Delta R.T.: 0.009 min
 Response: 2797239
 Conc: 6.43 ng/ml



#34 AR-1260-4

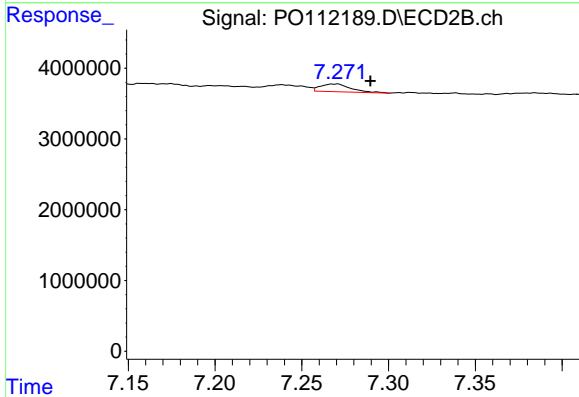
R.T.: 7.063 min
 Delta R.T.: 0.016 min
 Response: 980562
 Conc: 4.89 ng/ml



#35 AR-1260-5

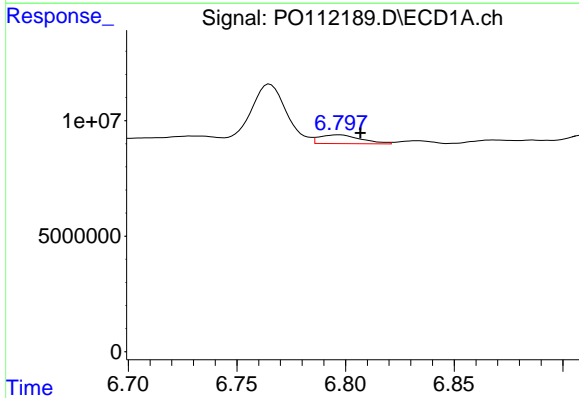
R.T.: 7.309 min
 Delta R.T.: 0.000 min
 Response: 4108002
 Conc: 3.25 ng/ml

Instrument :
 ECD_O
 ClientSampleId :
 VNJ-245



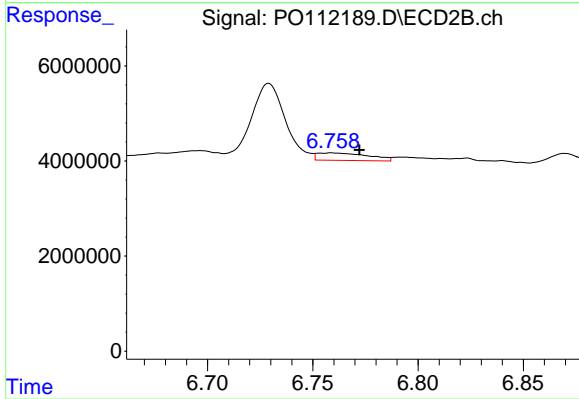
#35 AR-1260-5

R.T.: 7.270 min
 Delta R.T.: -0.020 min
 Response: 1331765
 Conc: 2.97 ng/ml



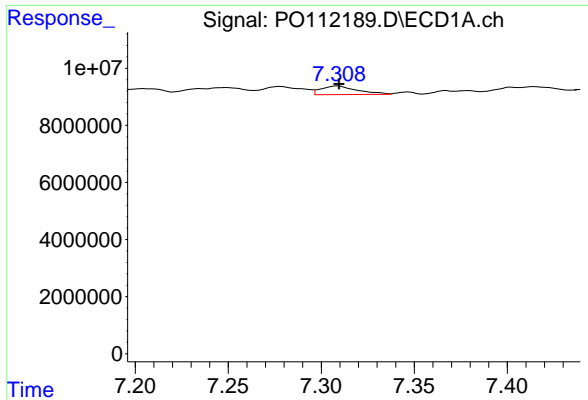
#36 AR-1262-1

R.T.: 6.797 min
 Delta R.T.: -0.010 min
 Response: 5002726
 Conc: 4.90 ng/ml



#36 AR-1262-1

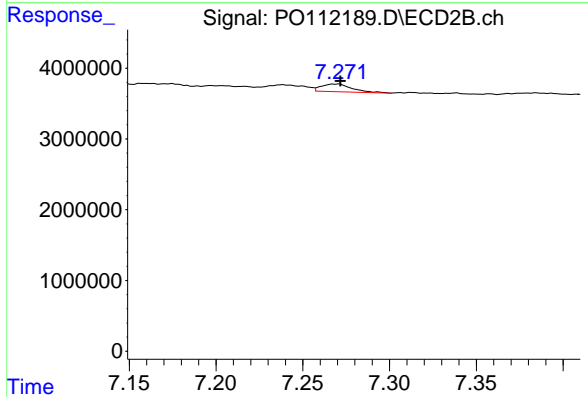
R.T.: 6.759 min
 Delta R.T.: -0.013 min
 Response: 2665050
 Conc: 6.54 ng/ml



#37 AR-1262-2

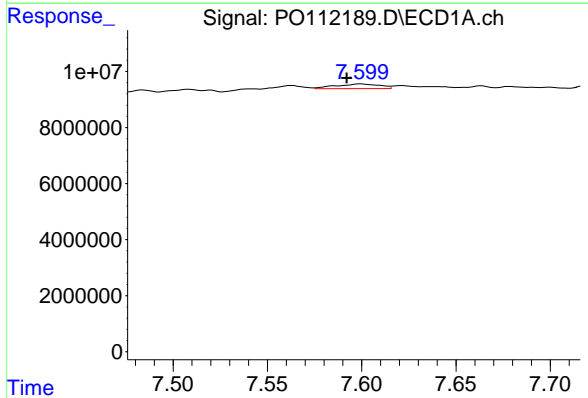
R.T.: 7.309 min
 Delta R.T.: 0.000 min
 Response: 4108002
 Conc: 2.51 ng/ml

Instrument :
 ECD_O
 ClientSampleId :
 VNJ-245



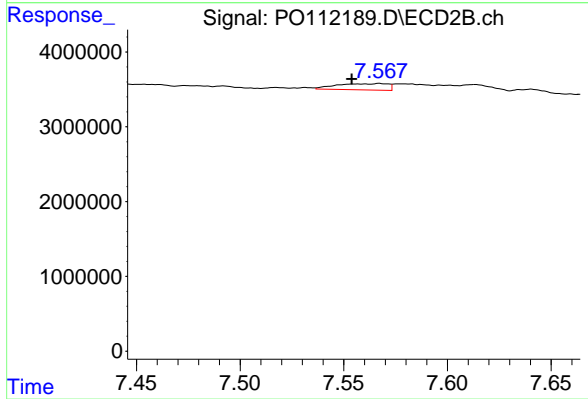
#37 AR-1262-2

R.T.: 7.270 min
 Delta R.T.: -0.002 min
 Response: 1331765
 Conc: 2.60 ng/ml



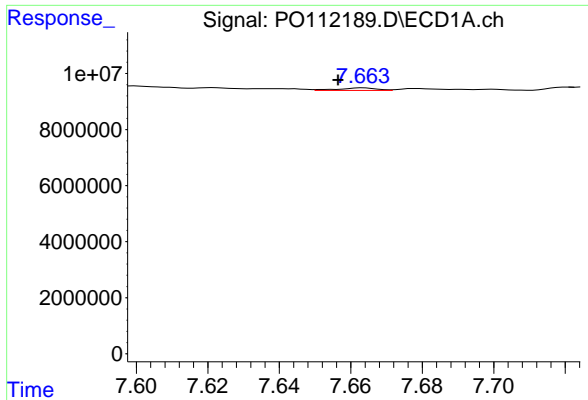
#38 AR-1262-3

R.T.: 7.599 min
 Delta R.T.: 0.007 min
 Response: 2721041
 Conc: 4.24 ng/ml



#38 AR-1262-3

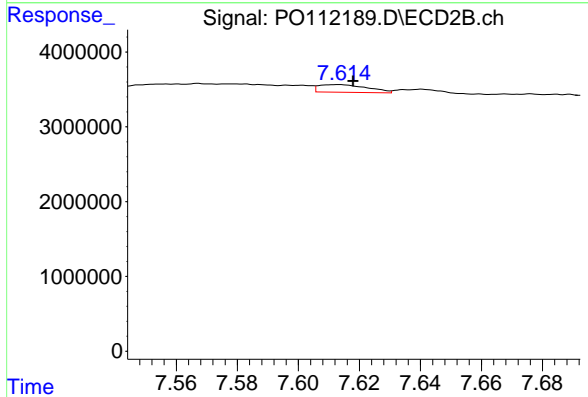
R.T.: 7.567 min
 Delta R.T.: 0.013 min
 Response: 1467492
 Conc: 8.17 ng/ml



#39 AR-1262-4

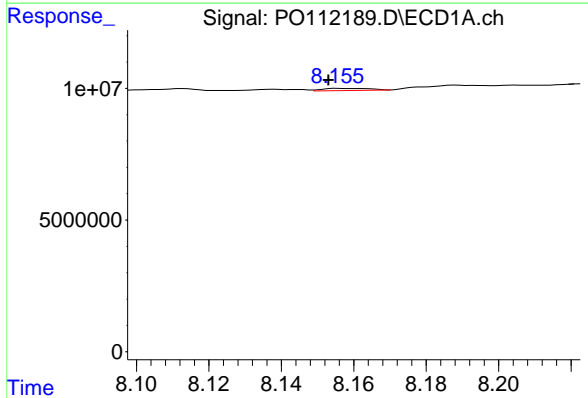
R.T.: 7.663 min
 Delta R.T.: 0.007 min
 Response: 699531
 Conc: 0.65 ng/ml

Instrument :
 ECD_O
 ClientSampleId :
 VNJ-245



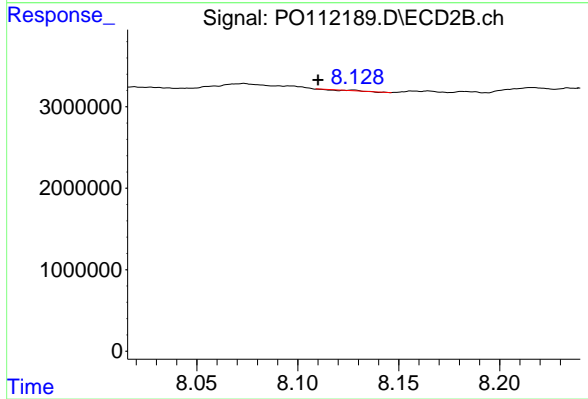
#39 AR-1262-4

R.T.: 7.613 min
 Delta R.T.: -0.005 min
 Response: 1124913
 Conc: 3.87 ng/ml



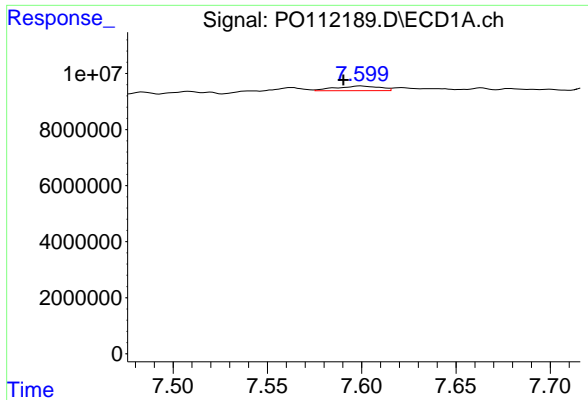
#40 AR-1262-5

R.T.: 8.156 min
 Delta R.T.: 0.003 min
 Response: 735293
 Conc: 1.64 ng/ml



#40 AR-1262-5

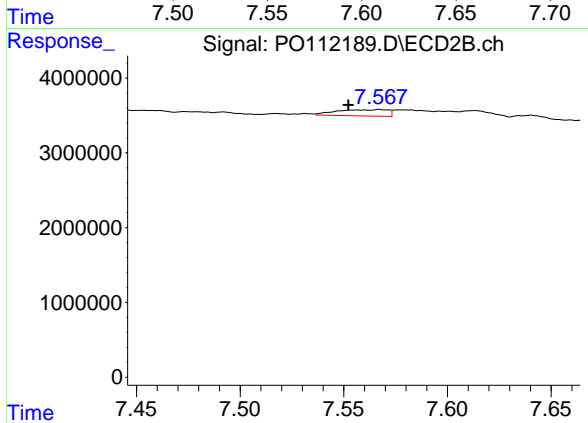
R.T.: 8.128 min
 Delta R.T.: 0.018 min
 Response: 14454
 Conc: 0.14 ng/ml



#41 AR-1268-1

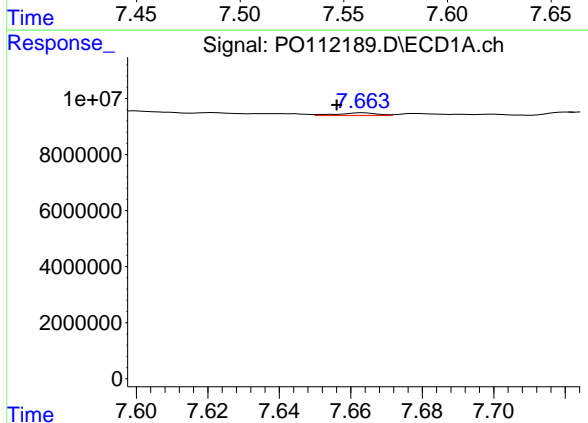
R.T.: 7.599 min
 Delta R.T.: 0.009 min
 Response: 2721041
 Conc: 1.48 ng/ml

Instrument : ECD_O
 ClientSampleId : VNJ-245



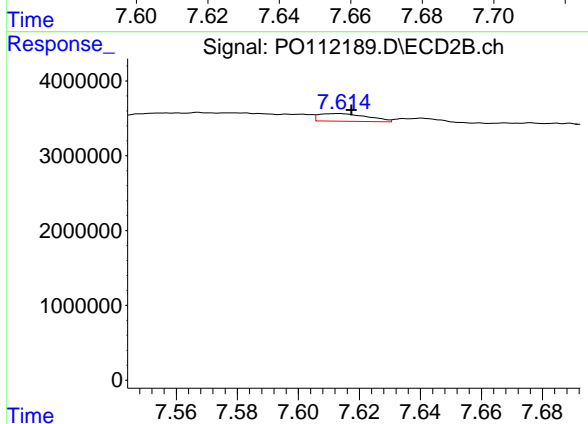
#41 AR-1268-1

R.T.: 7.567 min
 Delta R.T.: 0.015 min
 Response: 1467492
 Conc: 2.99 ng/ml



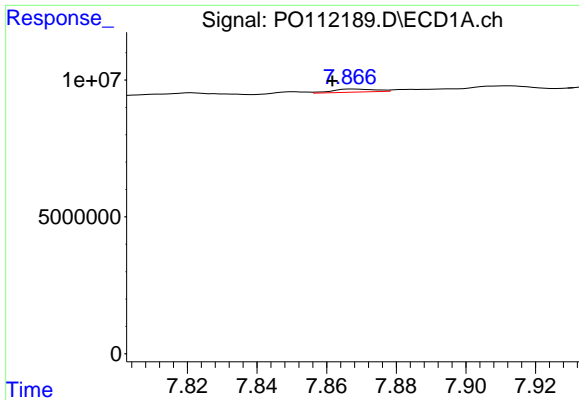
#42 AR-1268-2

R.T.: 7.663 min
 Delta R.T.: 0.007 min
 Response: 699531
 Conc: 0.45 ng/ml



#42 AR-1268-2

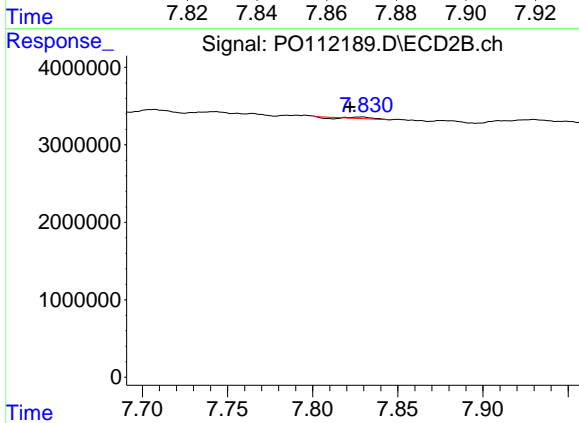
R.T.: 7.613 min
 Delta R.T.: -0.004 min
 Response: 1124913
 Conc: 2.70 ng/ml



#43 AR-1268-3

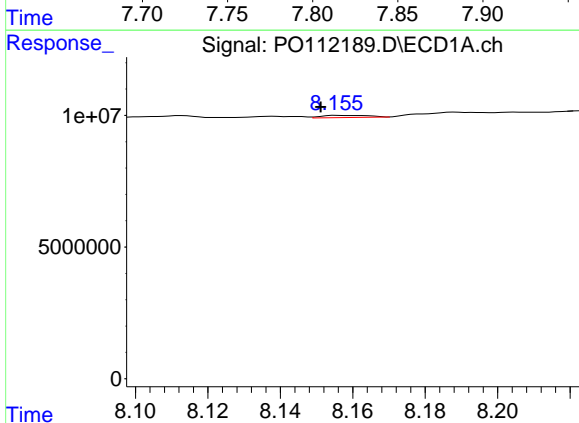
R.T.: 7.868 min
 Delta R.T.: 0.006 min
 Response: 956568
 Conc: 0.74 ng/ml

Instrument :
 ECD_O
 ClientSampleId :
 VNJ-245



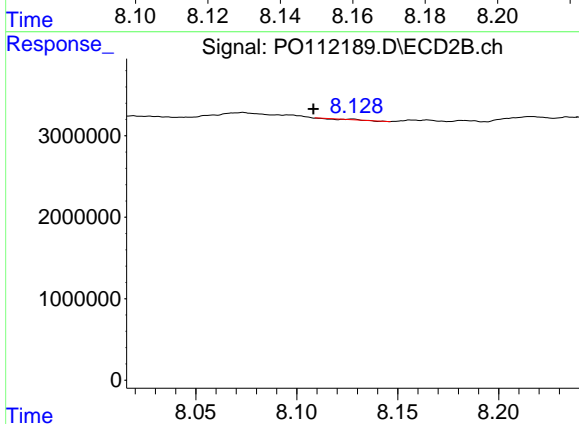
#43 AR-1268-3

R.T.: 7.829 min
 Delta R.T.: 0.007 min
 Response: 118776
 Conc: 0.38 ng/ml



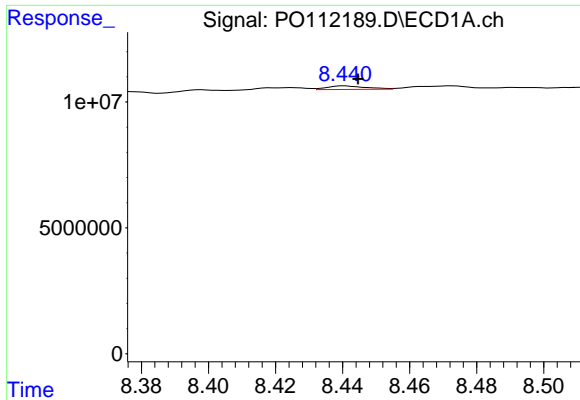
#44 AR-1268-4

R.T.: 8.156 min
 Delta R.T.: 0.005 min
 Response: 735293
 Conc: 1.53 ng/ml



#44 AR-1268-4

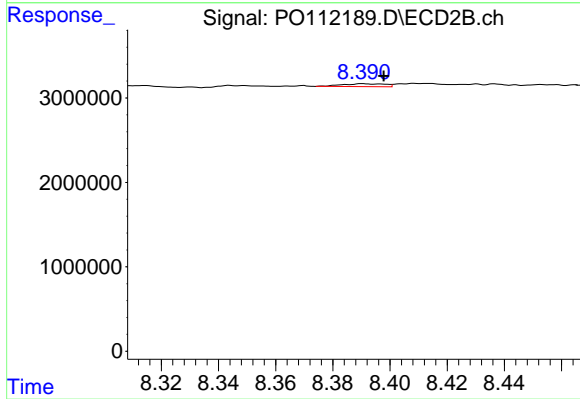
R.T.: 8.128 min
 Delta R.T.: 0.019 min
 Response: 14454
 Conc: 0.13 ng/ml



#45 AR-1268-5

R.T.: 8.441 min
 Delta R.T.: -0.004 min
 Response: 1124271
 Conc: 0.34 ng/ml

Instrument :
 ECD_O
 ClientSampleId :
 VNJ-245



#45 AR-1268-5

R.T.: 8.391 min
 Delta R.T.: -0.007 min
 Response: 369384
 Conc: 0.51 ng/ml