

Data Path : Z:\pestpcbsrv\HPCHEM1\ECD_0\Data\P0071025\
 Data File : P0112190.D
 Signal(s) : Signal #1: ECD1A.ch Signal #2: ECD2B.ch
 Acq On : 10 Jul 2025 14:40
 Operator : YP/AJ
 Sample : Q2543-01
 Misc :
 ALS Vial : 11 Sample Multiplier: 1

Instrument :
 ECD_0
 ClientSampleId :
 TP-41

Integration File signal 1: autoint1.e
 Integration File signal 2: autoint2.e
 Quant Time: Jul 10 15:44:28 2025
 Quant Method : Z:\pestpcbsrv\HPCHEM1\ECD_0\methods\P0070825.M
 Quant Title : GC EXTRACTABLES
 QLast Update : Wed Jul 09 10:50:50 2025
 Response via : Initial Calibration
 Integrator: ChemStation

Volume Inj. : 2 µl
 Signal #1 Phase : ZB-MR1 Signal #2 Phase: ZB-MR2
 Signal #1 Info : 30Mx0.32mmx 0.50µ Signal #2 Info : 30M x 0.32mm x 0.25µm

Compound	RT#1	RT#2	Resp#1	Resp#2	ng/ml	ng/ml
----------	------	------	--------	--------	-------	-------

System Monitoring Compounds

1) SA Tetrachlo...	3.669	3.663	196.6E6	119.8E6	19.870	18.803
2) SA Decachlor...	8.699	8.646	66973503	18616958	9.796	10.802

Target Compounds

3) L1 AR-1016-1	4.754	4.755	488657	1771397	1.437	7.949 #
4) L1 AR-1016-2	4.777	4.780	1387063	1728920	2.789	5.254 #
5) L1 AR-1016-3	4.840	4.960	2000787	80130	6.181	0.472 #
6) L1 AR-1016-4	4.958	4.997	455226	69250	1.773	0.505 #
7) L1 AR-1016-5	5.199	5.181	8570776	2892988	31.319	16.776 #
8) L2 AR-1221-1	3.882	3.867	602265	204229	5.165	2.482 #
9) L2 AR-1221-2	3.970	3.963	3322973	3341685	42.148	56.301 #
10) L2 AR-1221-3	4.042	4.036	839729	343362	3.115	1.819 #
11) L3 AR-1232-1	4.042	4.036	839729	343362	3.912	2.288 #
13) L3 AR-1232-3	4.777	4.935	1387063	377278	6.057	4.997
14) L3 AR-1232-4	4.958	5.019	455226	144029	3.983	2.183 #
15) L3 AR-1232-5	5.004	5.181	2046211	2892988	27.877	38.958 #
16) L4 AR-1242-1	4.754	4.755	488657	1771397	1.687	9.138 #
17) L4 AR-1242-2	4.777	4.755	1387063	1771397	3.257	6.252 #
18) L4 AR-1242-3	4.831	4.935	1079132	377278	3.943	2.590 #
19) L4 AR-1242-4	4.958	5.019	455226	144029	2.020	1.015 #
20) L4 AR-1242-5	5.603	5.529	2471608	5625417	11.677	30.954 #
21) L5 AR-1248-1	4.754	4.755	488657	1771397	2.154	11.475 #
22) L5 AR-1248-2	5.004	4.980	2046211	223526	6.637	1.086 #
23) L5 AR-1248-3	5.199	5.019	8570776	144029	21.042	0.671 #
24) L5 AR-1248-4	5.561	5.181	5067938	2892988	8.781	11.182 #
25) L5 AR-1248-5	5.603	5.577	2471608	6618033	6.333	26.414 #
26) L6 AR-1254-1	5.561	5.529	5067938	5625417	8.239	14.758 #
27) L6 AR-1254-2	5.737	5.713	686551	2949756	1.282	8.890 #
28) L6 AR-1254-3	6.119	6.101	3209107	7753226	3.822	16.084 #
29) L6 AR-1254-4	6.335	6.259f	12622527	12795989	26.241	49.084 #
30) L6 AR-1254-5	6.766	6.722	21209543	2165220	27.404	6.076 #
31) L7 AR-1260-1	6.248	6.259	2837972	12795989	5.662	45.608 #
32) L7 AR-1260-2	6.435	6.382f	5272567	5697526	7.143	16.758 #
33) L7 AR-1260-3	6.817	6.581	6796518	119585	10.369	0.434 #
34) L7 AR-1260-4	7.074	7.086f	1306346	716702	3.001	3.572
35) L7 AR-1260-5	7.331	7.239f	4830803	7120058	3.826	15.903 #
36) L8 AR-1262-1	6.817	6.760	6796518	855764	6.652	2.101 #
37) L8 AR-1262-2	7.331	7.239	4830803	7120058	2.947	13.891 #
38) L8 AR-1262-3	7.597	7.556	2838318	4067988	4.421	22.660 #
39) L8 AR-1262-4	7.666	7.556f	202864	4067988	0.189	13.983 #
40) L8 AR-1262-5	8.143	8.069f	821865	-99012	1.834	N.D. #
41) L9 AR-1268-1	7.597	7.556	2838318	4067988	1.545	8.277 #
42) L9 AR-1268-2	7.666	7.556f	202864	4067988	0.130	9.751 #

Data Path : Z:\pestpcbsrv\HPCHEM1\ECD_0\Data\P0071025\
 Data File : P0112190.D
 Signal(s) : Signal #1: ECD1A.ch Signal #2: ECD2B.ch
 Acq On : 10 Jul 2025 14:40
 Operator : YP/AJ
 Sample : Q2543-01
 Misc :
 ALS Vial : 11 Sample Multiplier: 1

Instrument :
 ECD_0
 ClientSampleId :
 TP-41

Integration File signal 1: autoint1.e
 Integration File signal 2: autoint2.e
 Quant Time: Jul 10 15:44:28 2025
 Quant Method : Z:\pestpcbsrv\HPCHEM1\ECD_0\methods\P0070825.M
 Quant Title : GC EXTRACTABLES
 QLast Update : Wed Jul 09 10:50:50 2025
 Response via : Initial Calibration
 Integrator: ChemStation

Volume Inj. : 2 µl
 Signal #1 Phase : ZB-MR1 Signal #2 Phase: ZB-MR2
 Signal #1 Info : 30Mx0.32mmx 0.50µ Signal #2 Info : 30M x 0.32mm x 0.25µm

	Compound	RT#1	RT#2	Resp#1	Resp#2	ng/ml	ng/ml
43)	L9 AR-1268-3	7.878	7.806	886885	197506	0.682	0.624
44)	L9 AR-1268-4	8.143	8.069f	821865	-99012	1.711	N.D. #
45)	L9 AR-1268-5	8.453	0.000	492431	0	0.151	N.D. #

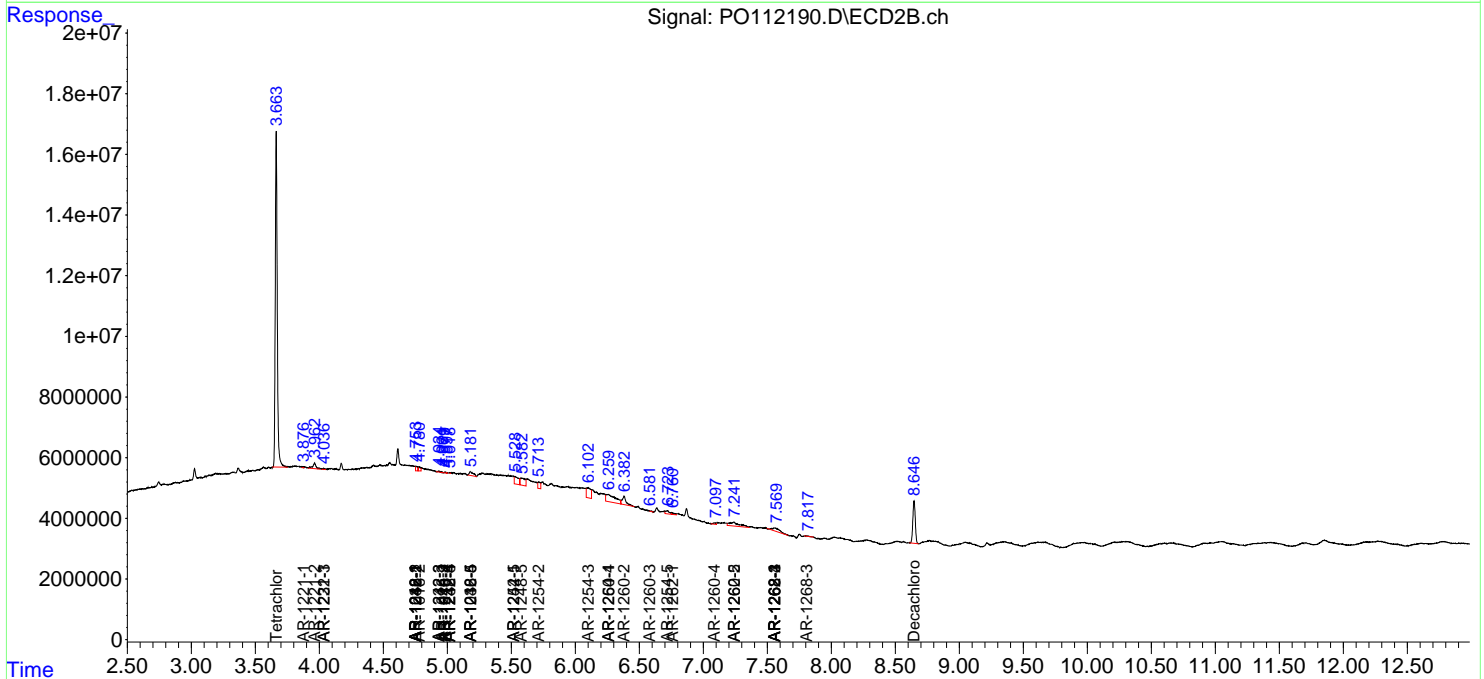
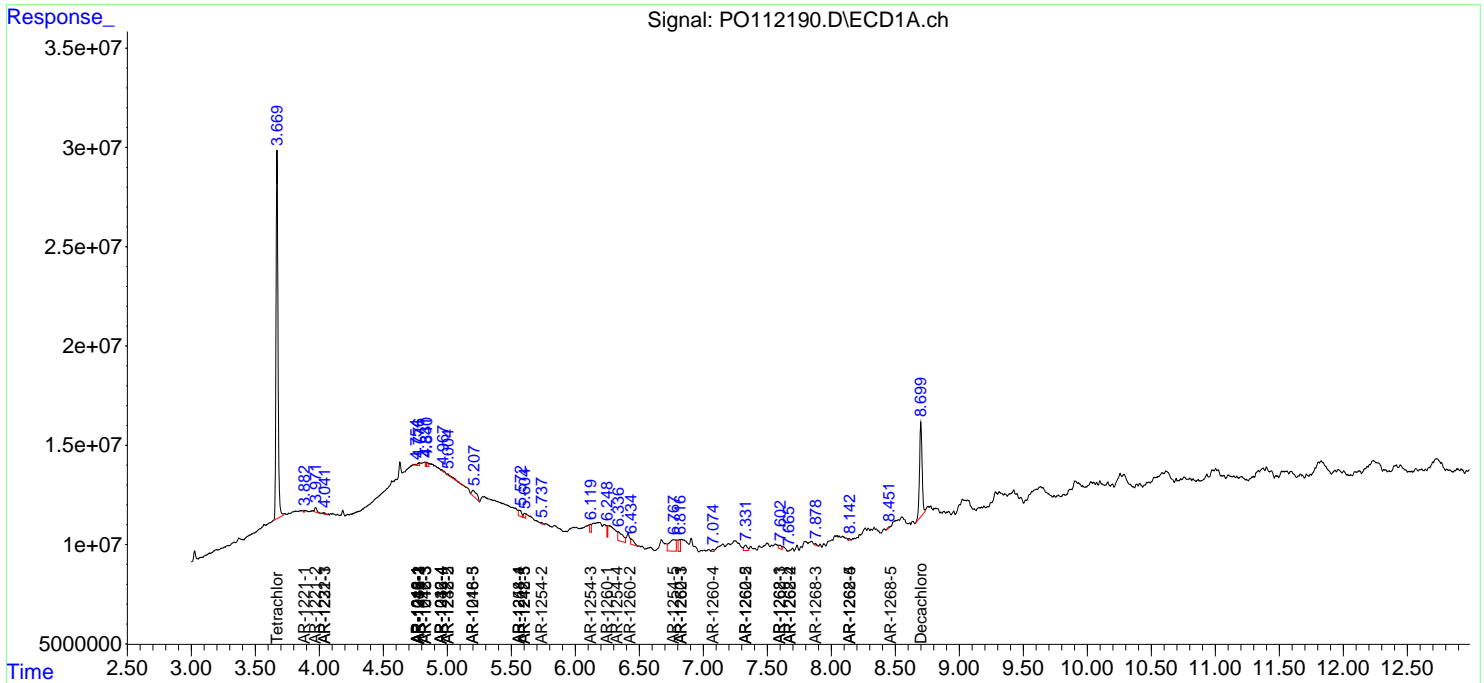
(f)=RT Delta > 1/2 Window (#)=Amounts differ by > 25% (m)=manual int.

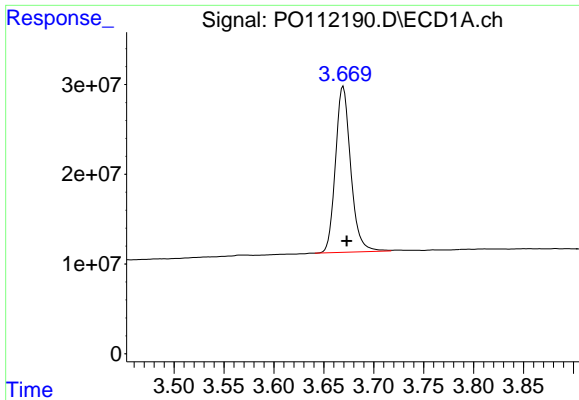
Data Path : Z:\pestpcbsrv\HPCHEM1\ECD_O\Data\PO071025\
 Data File : PO112190.D
 Signal(s) : Signal #1: ECD1A.ch Signal #2: ECD2B.ch
 Acq On : 10 Jul 2025 14:40
 Operator : YP/AJ
 Sample : Q2543-01
 Misc :
 ALS Vial : 11 Sample Multiplier: 1

Instrument :
 ECD_O
 ClientSampleId :
 TP-41

Integration File signal 1: autoint1.e
 Integration File signal 2: autoint2.e
 Quant Time: Jul 10 15:44:28 2025
 Quant Method : Z:\pestpcbsrv\HPCHEM1\ECD_O\methods\PO070825.M
 Quant Title : GC EXTRACTABLES
 QLast Update : Wed Jul 09 10:50:50 2025
 Response via : Initial Calibration
 Integrator: ChemStation

Volume Inj. : 2 µl
 Signal #1 Phase : ZB-MR1 Signal #2 Phase: ZB-MR2
 Signal #1 Info : 30Mx0.32mmx 0.50µ Signal #2 Info : 30M x 0.32mm x 0.25µm

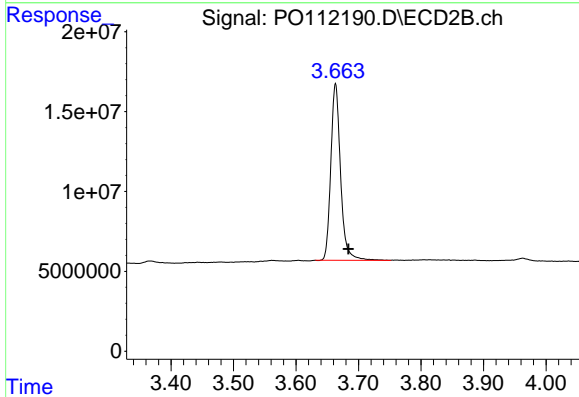




#1 Tetrachloro-m-xylene

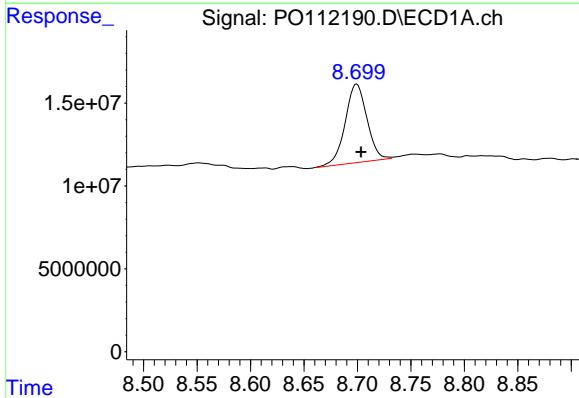
R.T.: 3.669 min
Delta R.T.: -0.004 min
Response: 196604458
Conc: 19.87 ng/ml

Instrument :
ECD_O
ClientSampleId :
TP-41



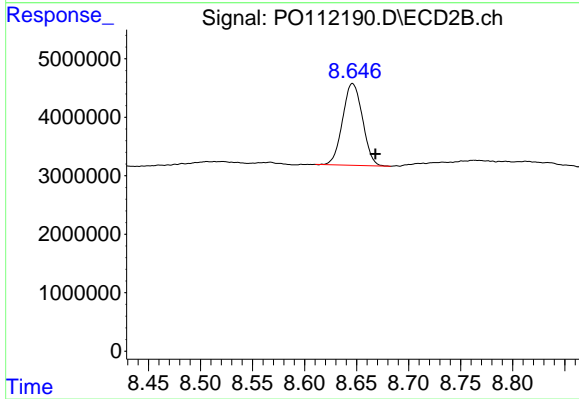
#1 Tetrachloro-m-xylene

R.T.: 3.663 min
Delta R.T.: -0.020 min
Response: 119795899
Conc: 18.80 ng/ml



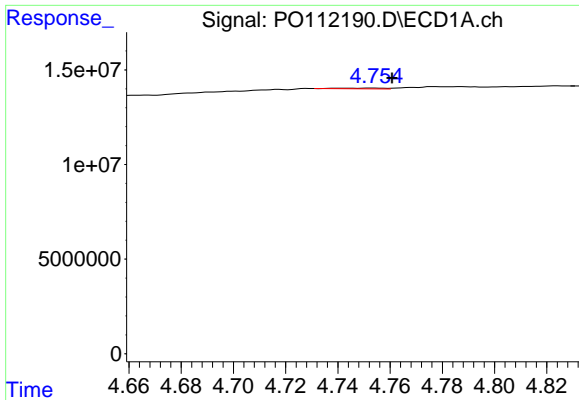
#2 Decachlorobiphenyl

R.T.: 8.699 min
Delta R.T.: -0.004 min
Response: 66973503
Conc: 9.80 ng/ml



#2 Decachlorobiphenyl

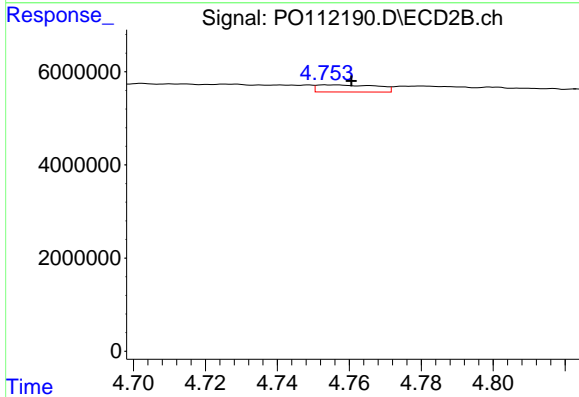
R.T.: 8.646 min
Delta R.T.: -0.022 min
Response: 18616958
Conc: 10.80 ng/ml



#3 AR-1016-1

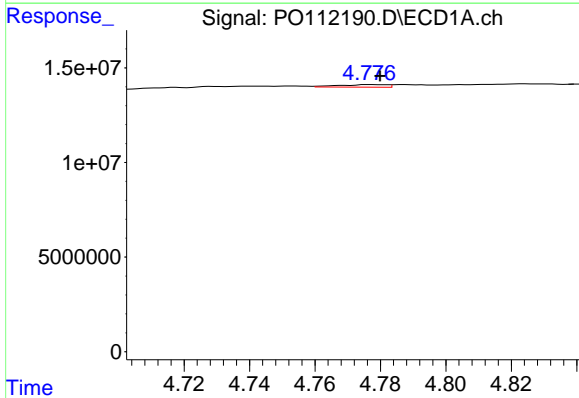
R.T.: 4.754 min
 Delta R.T.: -0.007 min
 Response: 488657
 Conc: 1.44 ng/ml

Instrument :
 ECD_O
 ClientSampleId :
 TP-41



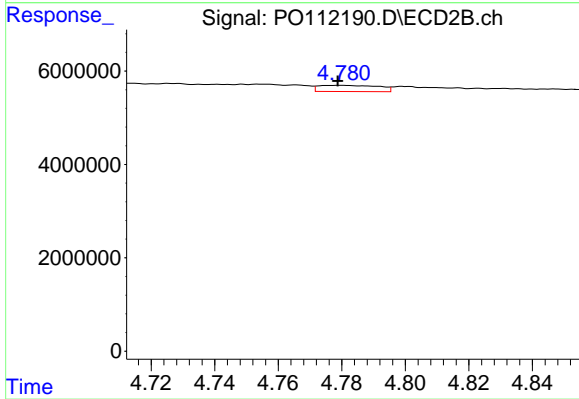
#3 AR-1016-1

R.T.: 4.755 min
 Delta R.T.: -0.006 min
 Response: 1771397
 Conc: 7.95 ng/ml



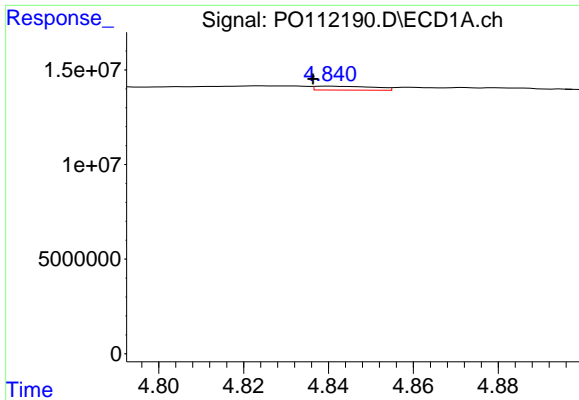
#4 AR-1016-2

R.T.: 4.777 min
 Delta R.T.: -0.003 min
 Response: 1387063
 Conc: 2.79 ng/ml



#4 AR-1016-2

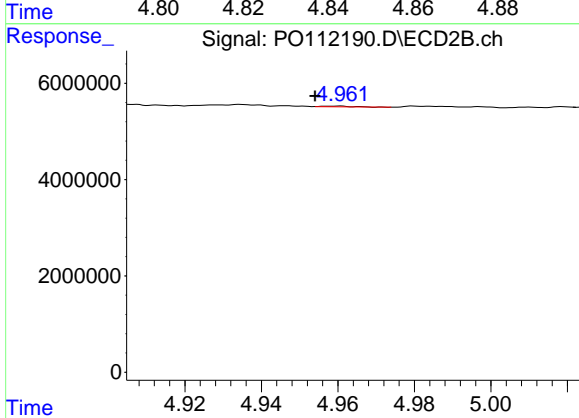
R.T.: 4.780 min
 Delta R.T.: 0.001 min
 Response: 1728920
 Conc: 5.25 ng/ml



#5 AR-1016-3

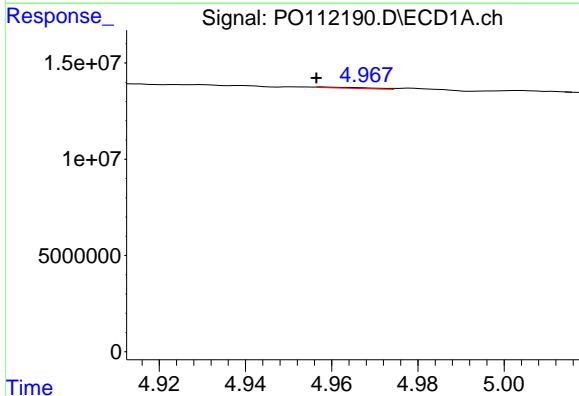
R.T.: 4.840 min
 Delta R.T.: 0.004 min
 Response: 2000787
 Conc: 6.18 ng/ml

Instrument :
 ECD_O
 ClientSampleId :
 TP-41



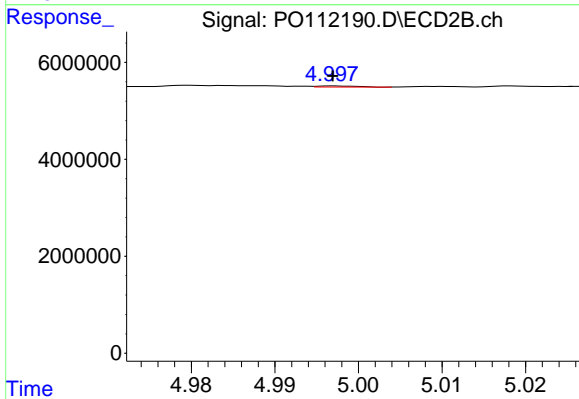
#5 AR-1016-3

R.T.: 4.960 min
 Delta R.T.: 0.006 min
 Response: 80130
 Conc: 0.47 ng/ml



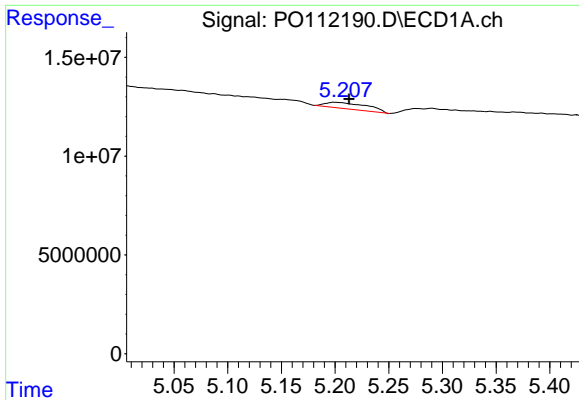
#6 AR-1016-4

R.T.: 4.958 min
 Delta R.T.: 0.001 min
 Response: 455226
 Conc: 1.77 ng/ml



#6 AR-1016-4

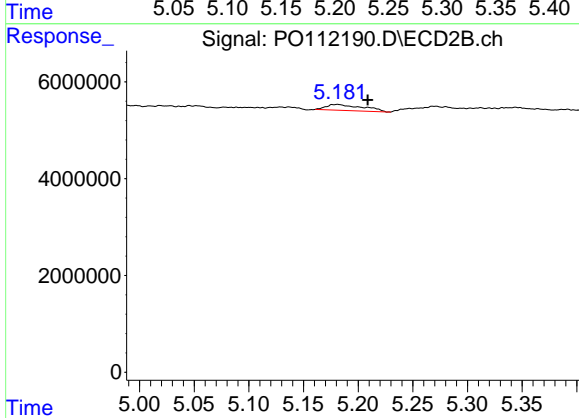
R.T.: 4.997 min
 Delta R.T.: 0.000 min
 Response: 69250
 Conc: 0.50 ng/ml



#7 AR-1016-5

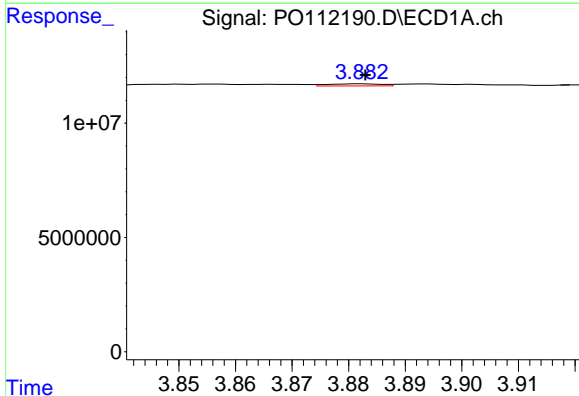
R.T.: 5.199 min
 Delta R.T.: -0.014 min
 Response: 8570776
 Conc: 31.32 ng/ml

Instrument :
 ECD_O
 ClientSampleId :
 TP-41



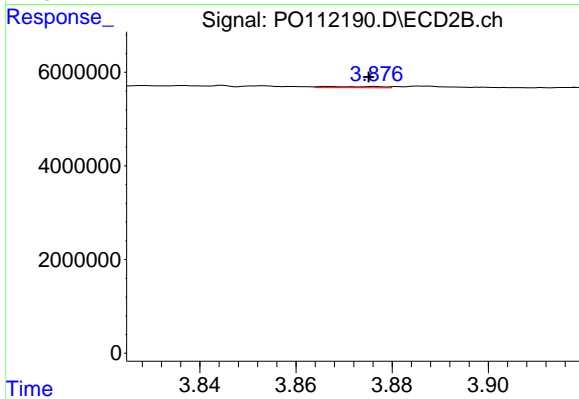
#7 AR-1016-5

R.T.: 5.181 min
 Delta R.T.: -0.028 min
 Response: 2892988
 Conc: 16.78 ng/ml



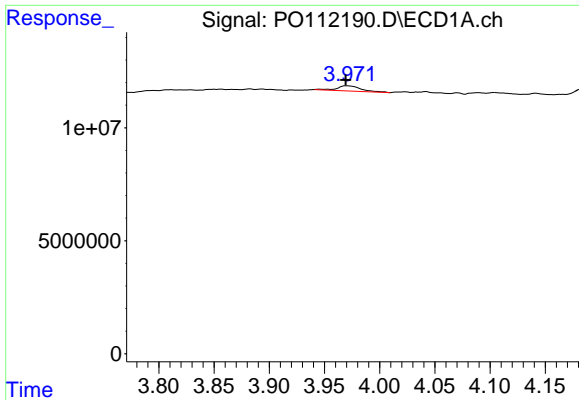
#8 AR-1221-1

R.T.: 3.882 min
 Delta R.T.: 0.000 min
 Response: 602265
 Conc: 5.16 ng/ml



#8 AR-1221-1

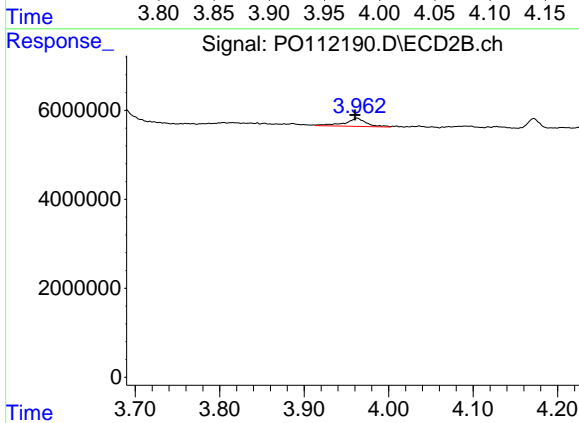
R.T.: 3.867 min
 Delta R.T.: -0.008 min
 Response: 204229
 Conc: 2.48 ng/ml



#9 AR-1221-2

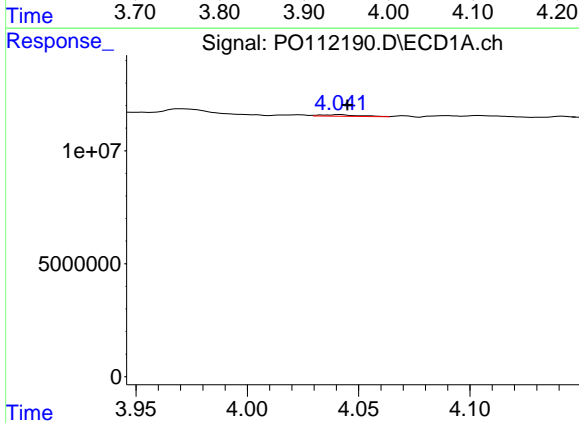
R.T.: 3.970 min
 Delta R.T.: 0.000 min
 Response: 3322973
 Conc: 42.15 ng/ml

Instrument :
 ECD_O
 ClientSampleId :
 TP-41



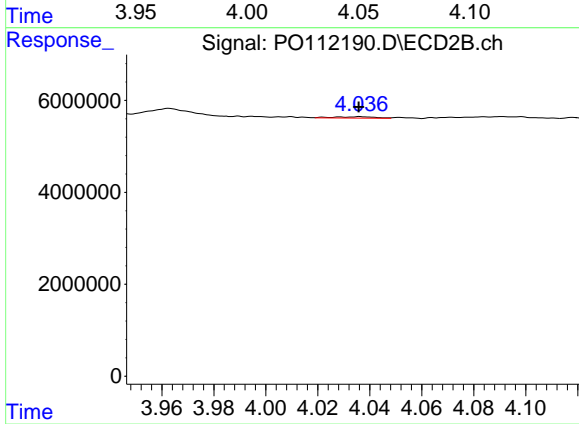
#9 AR-1221-2

R.T.: 3.963 min
 Delta R.T.: 0.002 min
 Response: 3341685
 Conc: 56.30 ng/ml



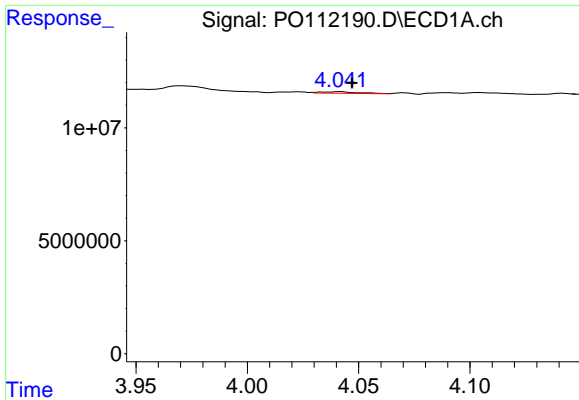
#10 AR-1221-3

R.T.: 4.042 min
 Delta R.T.: -0.003 min
 Response: 839729
 Conc: 3.11 ng/ml



#10 AR-1221-3

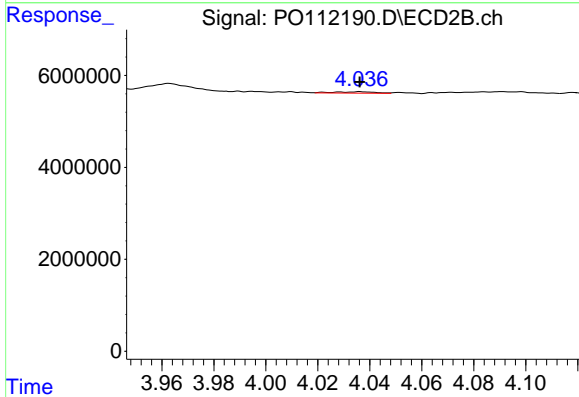
R.T.: 4.036 min
 Delta R.T.: 0.000 min
 Response: 343362
 Conc: 1.82 ng/ml



#11 AR-1232-1

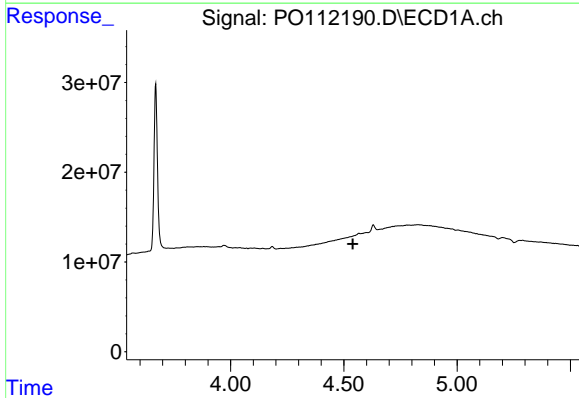
R.T.: 4.042 min
 Delta R.T.: -0.005 min
 Response: 839729
 Conc: 3.91 ng/ml

Instrument :
 ECD_O
 ClientSampleId :
 TP-41



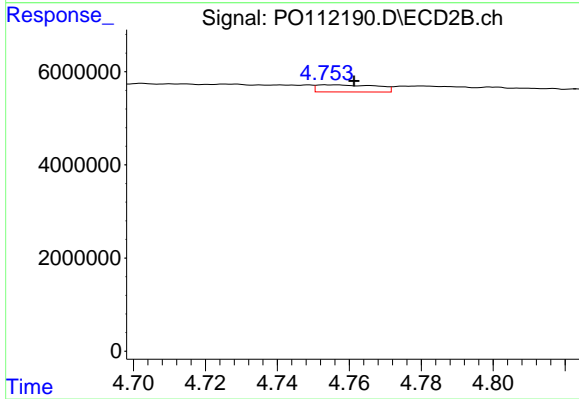
#11 AR-1232-1

R.T.: 4.036 min
 Delta R.T.: 0.000 min
 Response: 343362
 Conc: 2.29 ng/ml



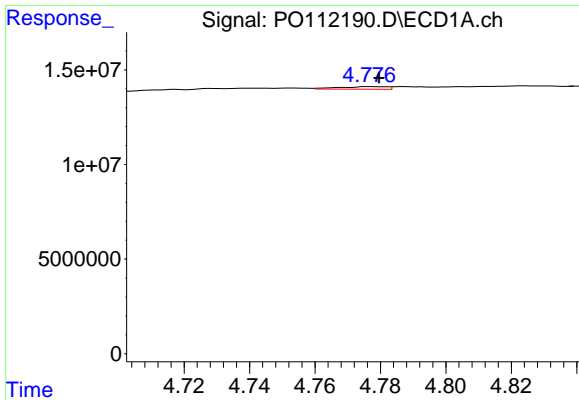
#12 AR-1232-2

R.T.: 4.566 min
 Delta R.T.: 0.027 min
 Response: -7808469
 Conc: N.D.



#12 AR-1232-2

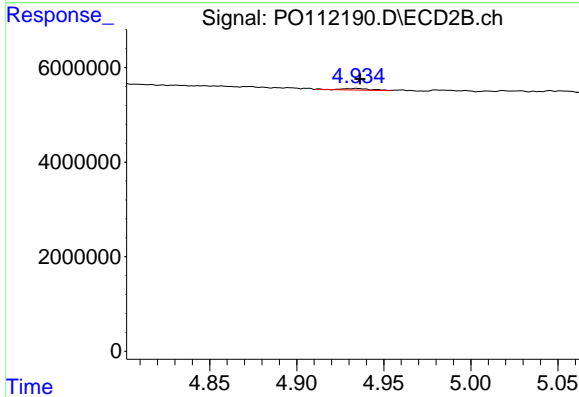
R.T.: 4.755 min
 Delta R.T.: -0.007 min
 Response: 1771397
 Conc: 11.57 ng/ml



#13 AR-1232-3

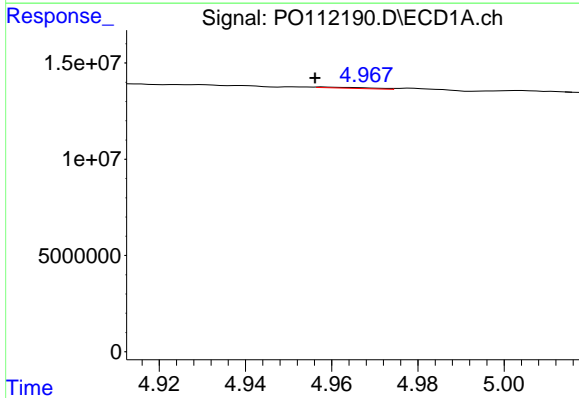
R.T.: 4.777 min
 Delta R.T.: -0.003 min
 Response: 1387063
 Conc: 6.06 ng/ml

Instrument :
 ECD_O
 ClientSampleId :
 TP-41



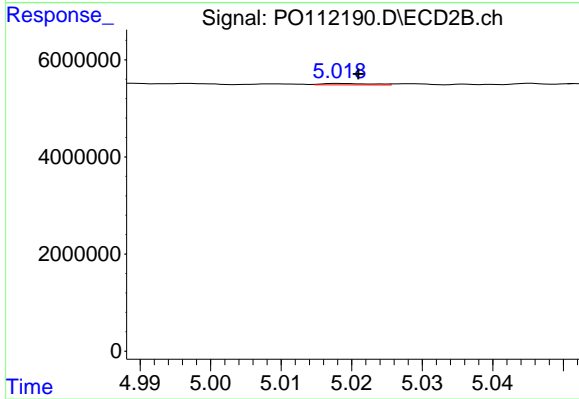
#13 AR-1232-3

R.T.: 4.935 min
 Delta R.T.: -0.002 min
 Response: 377278
 Conc: 5.00 ng/ml



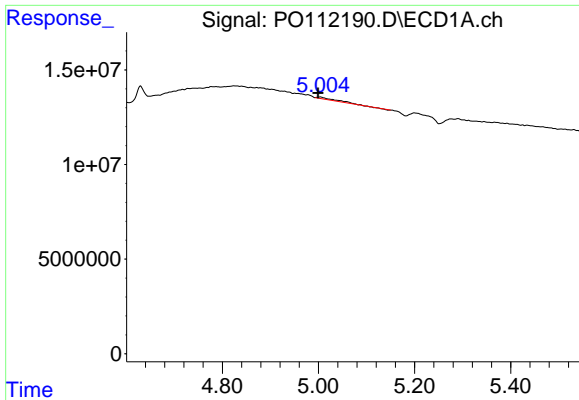
#14 AR-1232-4

R.T.: 4.958 min
 Delta R.T.: 0.001 min
 Response: 455226
 Conc: 3.98 ng/ml



#14 AR-1232-4

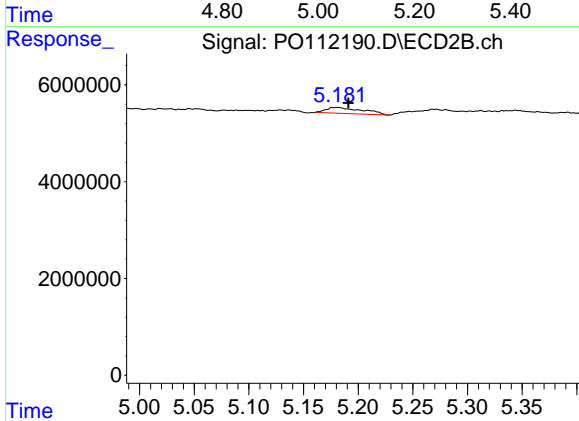
R.T.: 5.019 min
 Delta R.T.: -0.002 min
 Response: 144029
 Conc: 2.18 ng/ml



#15 AR-1232-5

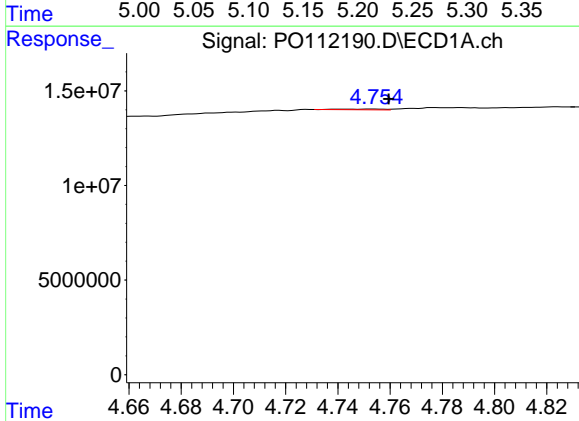
R.T.: 5.004 min
 Delta R.T.: 0.004 min
 Response: 2046211
 Conc: 27.88 ng/ml

Instrument :
 ECD_O
 ClientSampleId :
 TP-41



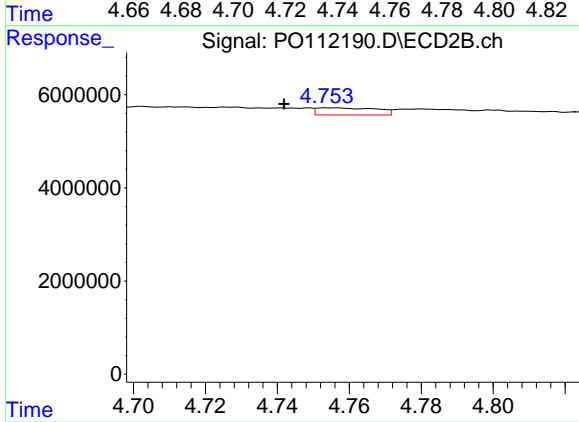
#15 AR-1232-5

R.T.: 5.181 min
 Delta R.T.: -0.010 min
 Response: 2892988
 Conc: 38.96 ng/ml



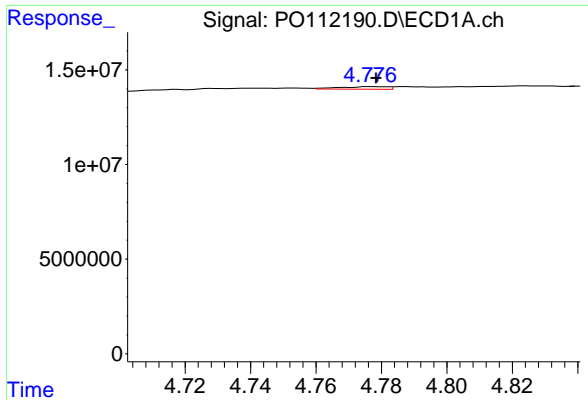
#16 AR-1242-1

R.T.: 4.754 min
 Delta R.T.: -0.005 min
 Response: 488657
 Conc: 1.69 ng/ml



#16 AR-1242-1

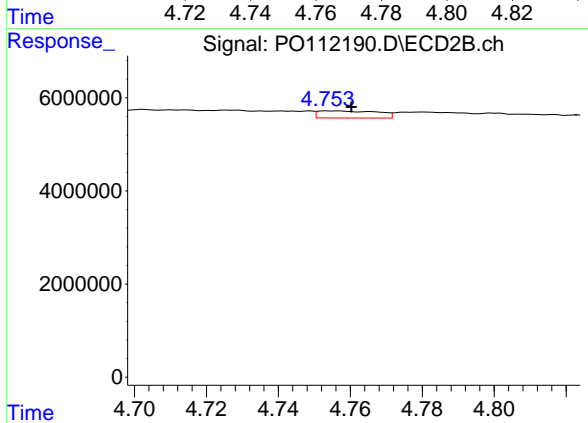
R.T.: 4.755 min
 Delta R.T.: 0.013 min
 Response: 1771397
 Conc: 9.14 ng/ml



#17 AR-1242-2

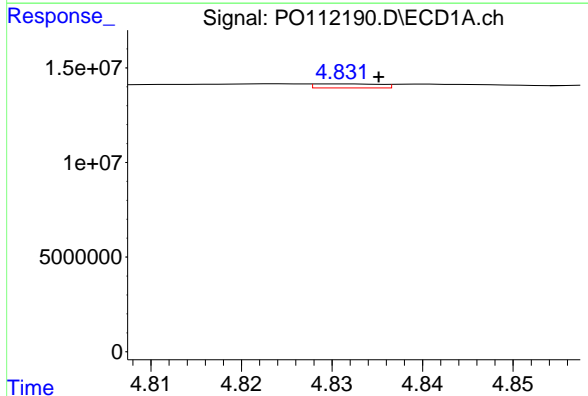
R.T.: 4.777 min
 Delta R.T.: -0.002 min
 Response: 1387063
 Conc: 3.26 ng/ml

Instrument :
 ECD_O
 ClientSampleId :
 TP-41



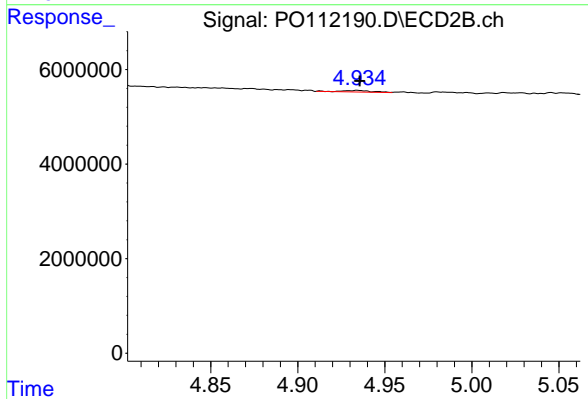
#17 AR-1242-2

R.T.: 4.755 min
 Delta R.T.: -0.006 min
 Response: 1771397
 Conc: 6.25 ng/ml



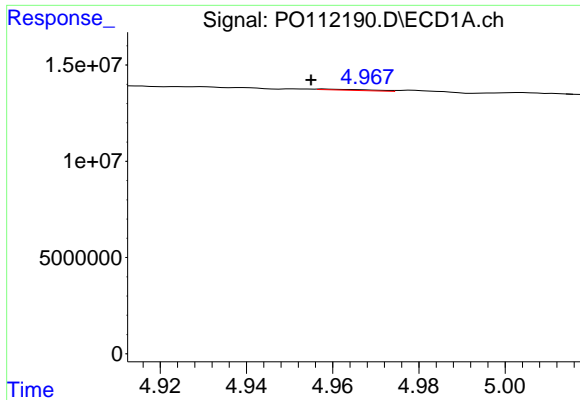
#18 AR-1242-3

R.T.: 4.831 min
 Delta R.T.: -0.004 min
 Response: 1079132
 Conc: 3.94 ng/ml



#18 AR-1242-3

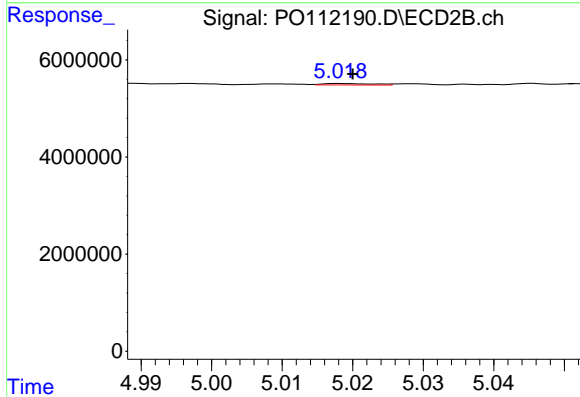
R.T.: 4.935 min
 Delta R.T.: -0.001 min
 Response: 377278
 Conc: 2.59 ng/ml



#19 AR-1242-4

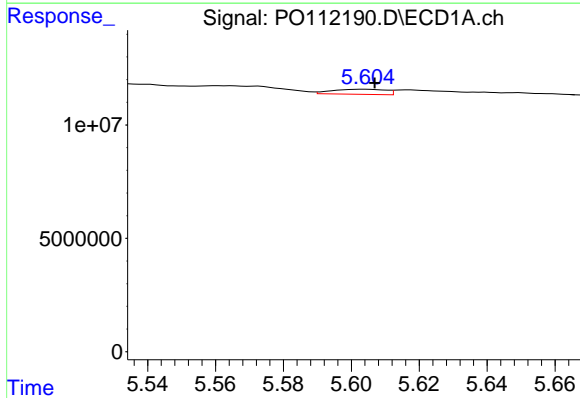
R.T.: 4.958 min
 Delta R.T.: 0.003 min
 Response: 455226
 Conc: 2.02 ng/ml

Instrument :
 ECD_O
 ClientSampleId :
 TP-41



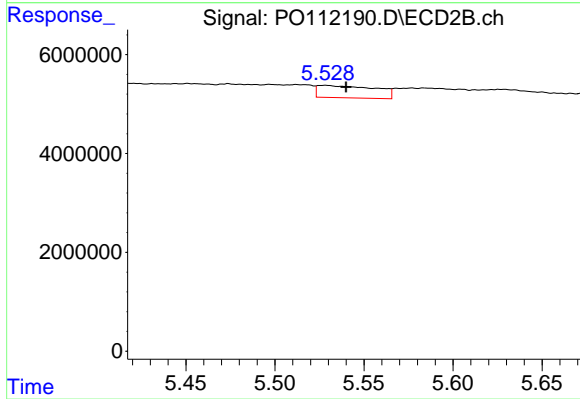
#19 AR-1242-4

R.T.: 5.019 min
 Delta R.T.: -0.001 min
 Response: 144029
 Conc: 1.02 ng/ml



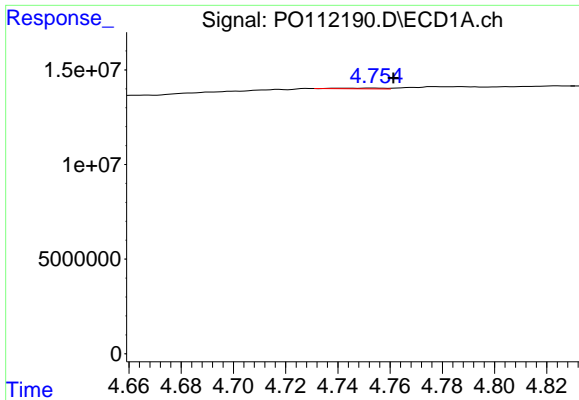
#20 AR-1242-5

R.T.: 5.603 min
 Delta R.T.: -0.003 min
 Response: 2471608
 Conc: 11.68 ng/ml



#20 AR-1242-5

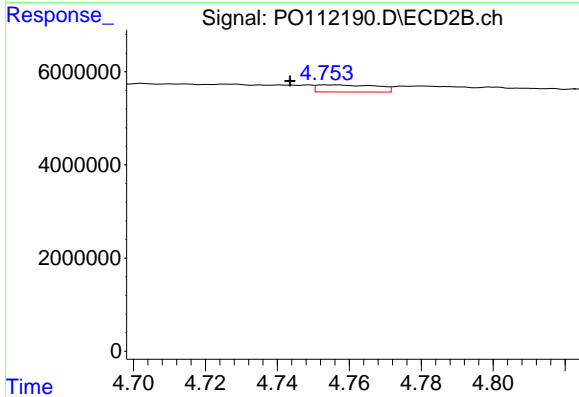
R.T.: 5.529 min
 Delta R.T.: -0.011 min
 Response: 5625417
 Conc: 30.95 ng/ml



#21 AR-1248-1

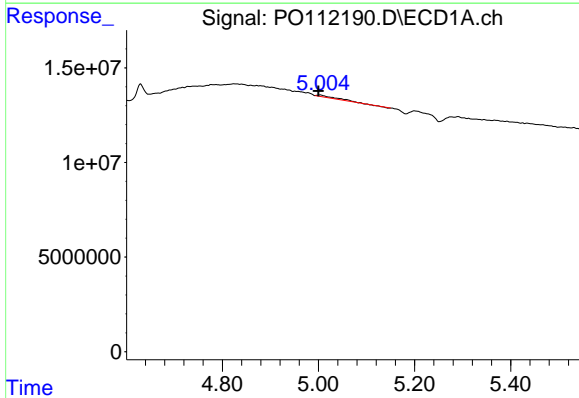
R.T.: 4.754 min
 Delta R.T.: -0.007 min
 Response: 488657
 Conc: 2.15 ng/ml

Instrument :
 ECD_O
 ClientSampleId :
 TP-41



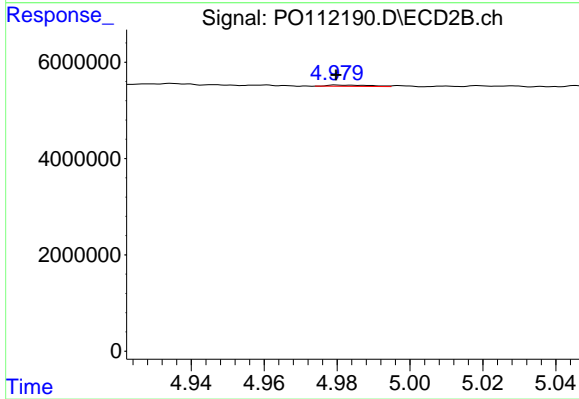
#21 AR-1248-1

R.T.: 4.755 min
 Delta R.T.: 0.011 min
 Response: 1771397
 Conc: 11.48 ng/ml



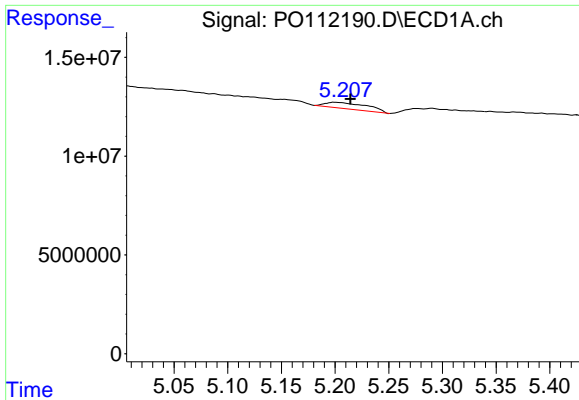
#22 AR-1248-2

R.T.: 5.004 min
 Delta R.T.: 0.004 min
 Response: 2046211
 Conc: 6.64 ng/ml



#22 AR-1248-2

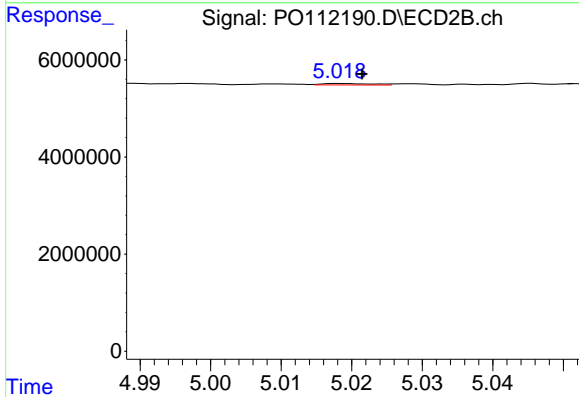
R.T.: 4.980 min
 Delta R.T.: 0.000 min
 Response: 223526
 Conc: 1.09 ng/ml



#23 AR-1248-3

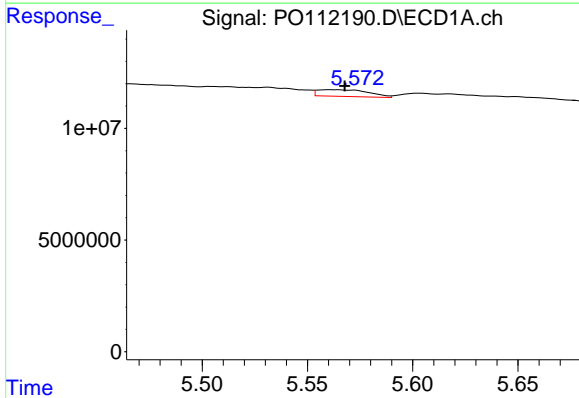
R.T.: 5.199 min
 Delta R.T.: -0.015 min
 Response: 8570776
 Conc: 21.04 ng/ml

Instrument :
 ECD_O
 ClientSampleId :
 TP-41



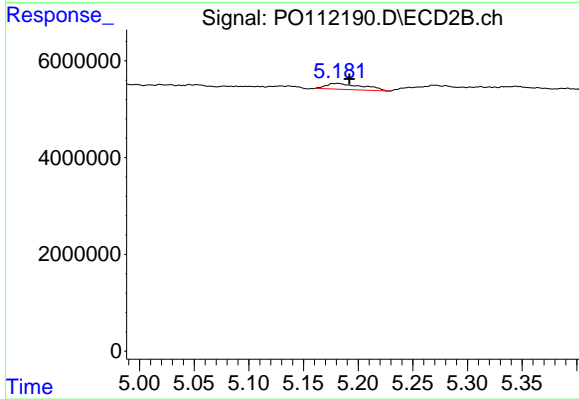
#23 AR-1248-3

R.T.: 5.019 min
 Delta R.T.: -0.003 min
 Response: 144029
 Conc: 0.67 ng/ml



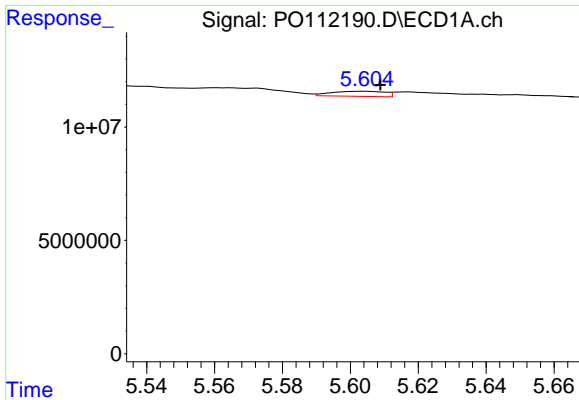
#24 AR-1248-4

R.T.: 5.561 min
 Delta R.T.: -0.007 min
 Response: 5067938
 Conc: 8.78 ng/ml



#24 AR-1248-4

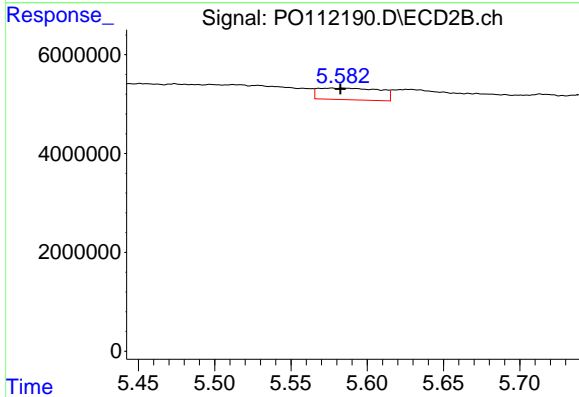
R.T.: 5.181 min
 Delta R.T.: -0.011 min
 Response: 2892988
 Conc: 11.18 ng/ml



#25 AR-1248-5

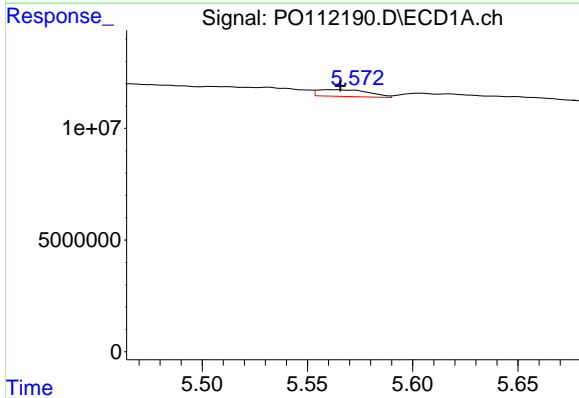
R.T.: 5.603 min
 Delta R.T.: -0.005 min
 Response: 2471608
 Conc: 6.33 ng/ml

Instrument :
 ECD_O
 ClientSampleId :
 TP-41



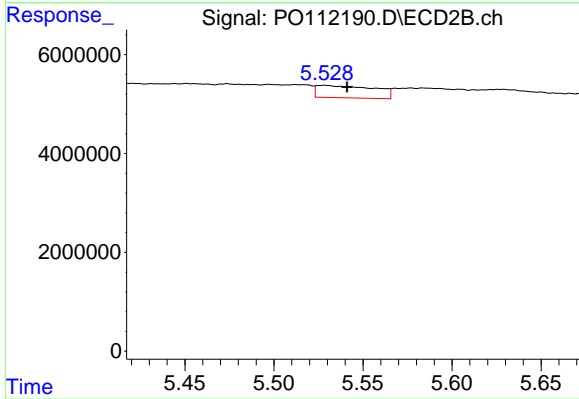
#25 AR-1248-5

R.T.: 5.577 min
 Delta R.T.: -0.005 min
 Response: 6618033
 Conc: 26.41 ng/ml



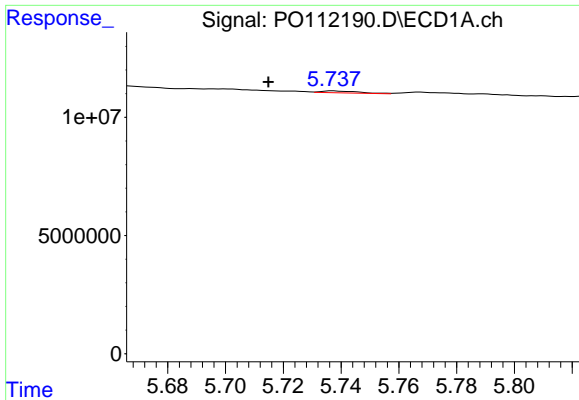
#26 AR-1254-1

R.T.: 5.561 min
 Delta R.T.: -0.005 min
 Response: 5067938
 Conc: 8.24 ng/ml



#26 AR-1254-1

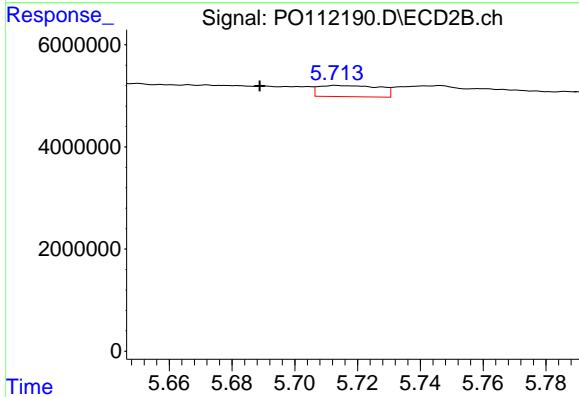
R.T.: 5.529 min
 Delta R.T.: -0.013 min
 Response: 5625417
 Conc: 14.76 ng/ml



#27 AR-1254-2

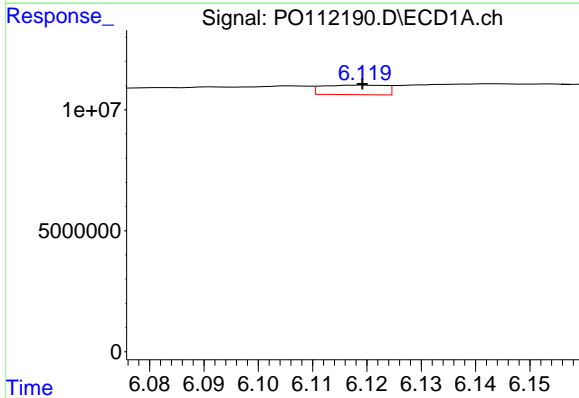
R.T.: 5.737 min
 Delta R.T.: 0.022 min
 Response: 686551
 Conc: 1.28 ng/ml

Instrument :
 ECD_O
 ClientSampleId :
 TP-41



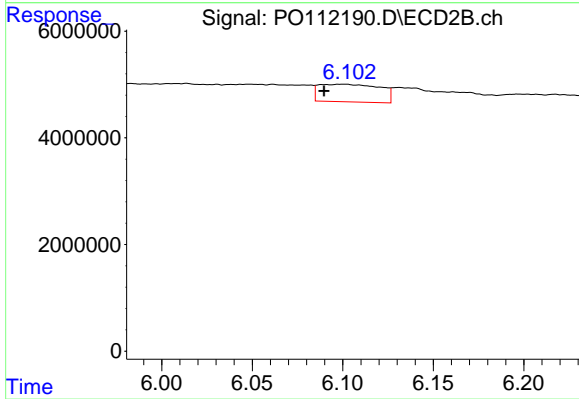
#27 AR-1254-2

R.T.: 5.713 min
 Delta R.T.: 0.024 min
 Response: 2949756
 Conc: 8.89 ng/ml



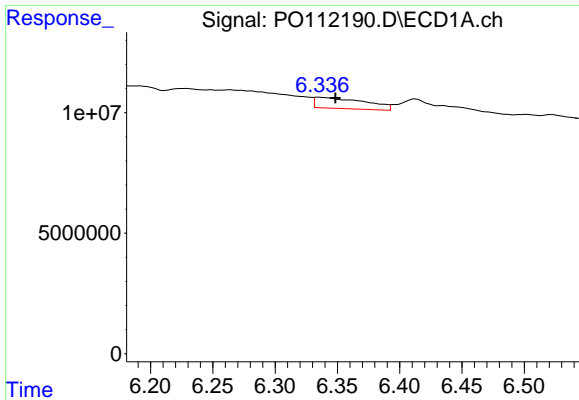
#28 AR-1254-3

R.T.: 6.119 min
 Delta R.T.: 0.000 min
 Response: 3209107
 Conc: 3.82 ng/ml



#28 AR-1254-3

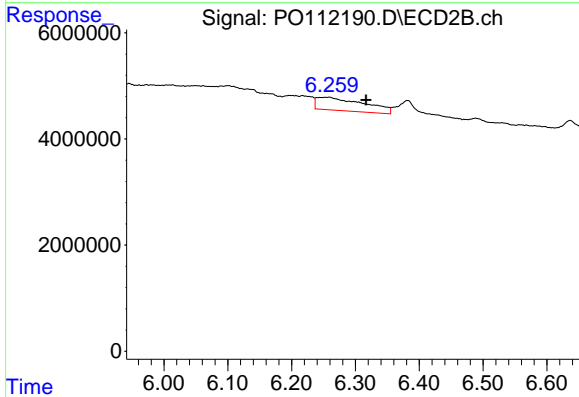
R.T.: 6.101 min
 Delta R.T.: 0.011 min
 Response: 7753226
 Conc: 16.08 ng/ml



#29 AR-1254-4

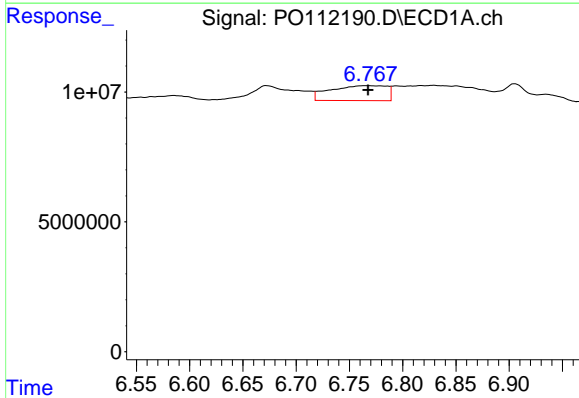
R.T.: 6.335 min
 Delta R.T.: -0.013 min
 Response: 12622527
 Conc: 26.24 ng/ml

Instrument :
 ECD_O
 ClientSampleId :
 TP-41



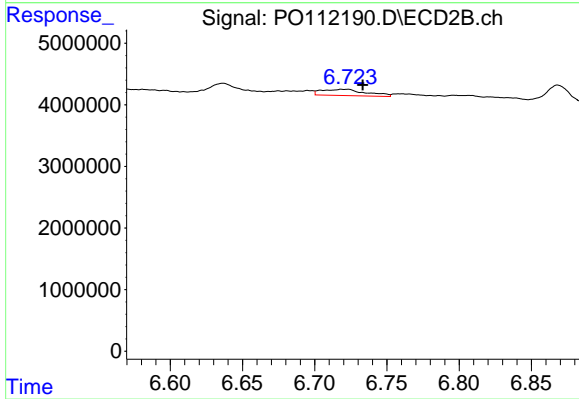
#29 AR-1254-4

R.T.: 6.259 min
 Delta R.T.: -0.058 min
 Response: 12795989
 Conc: 49.08 ng/ml



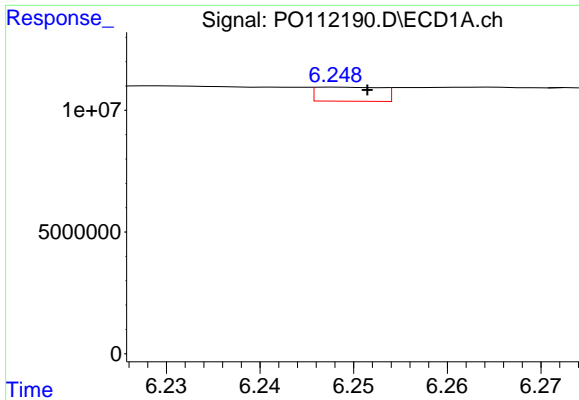
#30 AR-1254-5

R.T.: 6.766 min
 Delta R.T.: -0.001 min
 Response: 21209543
 Conc: 27.40 ng/ml



#30 AR-1254-5

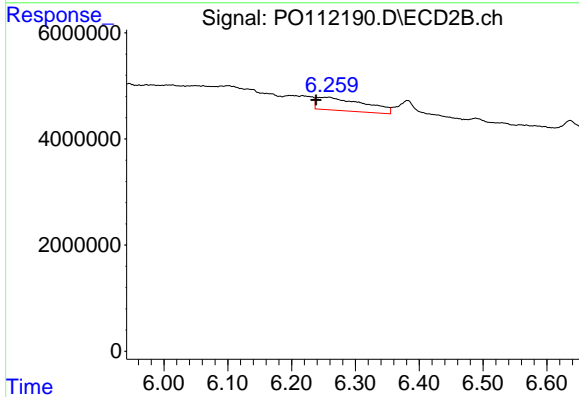
R.T.: 6.722 min
 Delta R.T.: -0.011 min
 Response: 2165220
 Conc: 6.08 ng/ml



#31 AR-1260-1

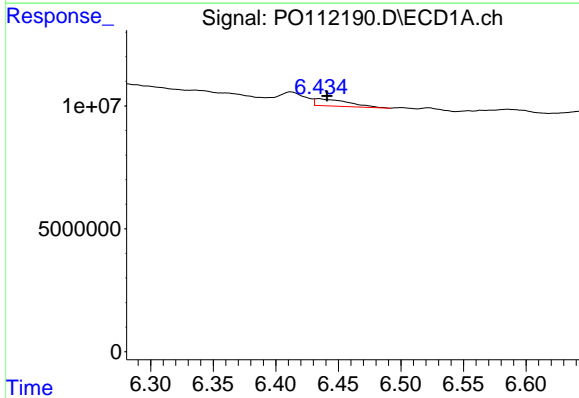
R.T.: 6.248 min
 Delta R.T.: -0.003 min
 Response: 2837972
 Conc: 5.66 ng/ml

Instrument :
 ECD_O
 ClientSampleId :
 TP-41



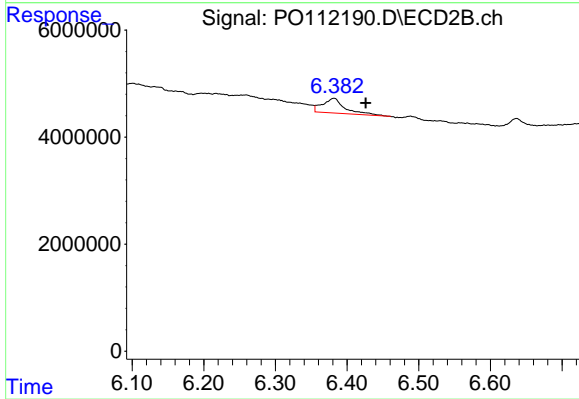
#31 AR-1260-1

R.T.: 6.259 min
 Delta R.T.: 0.021 min
 Response: 12795989
 Conc: 45.61 ng/ml



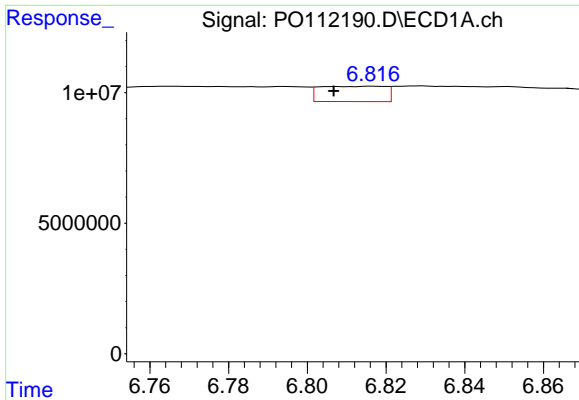
#32 AR-1260-2

R.T.: 6.435 min
 Delta R.T.: -0.006 min
 Response: 5272567
 Conc: 7.14 ng/ml



#32 AR-1260-2

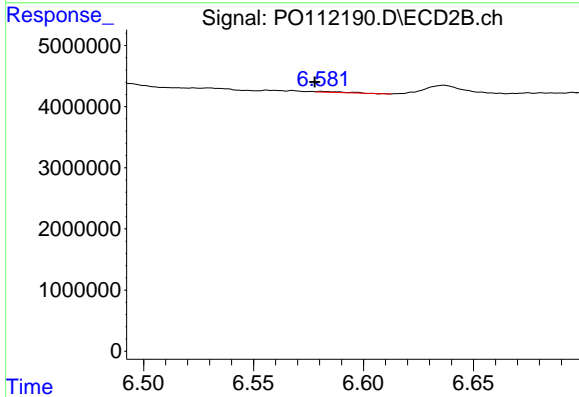
R.T.: 6.382 min
 Delta R.T.: -0.044 min
 Response: 5697526
 Conc: 16.76 ng/ml



#33 AR-1260-3

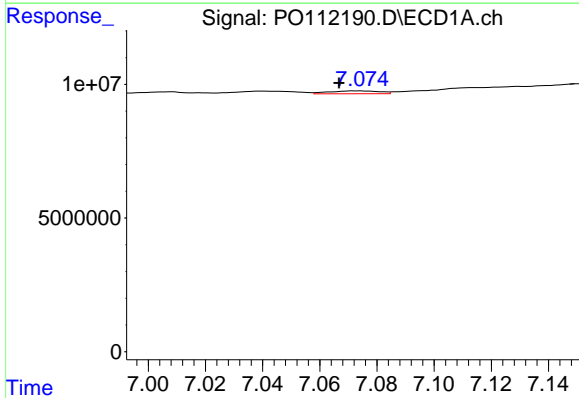
R.T.: 6.817 min
 Delta R.T.: 0.010 min
 Response: 6796518
 Conc: 10.37 ng/ml

Instrument :
 ECD_O
 ClientSampleId :
 TP-41



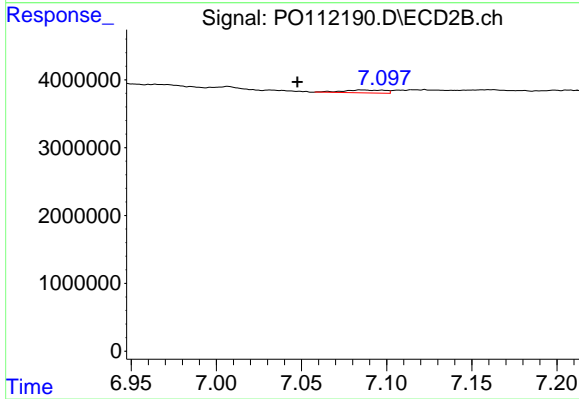
#33 AR-1260-3

R.T.: 6.581 min
 Delta R.T.: 0.003 min
 Response: 119585
 Conc: 0.43 ng/ml



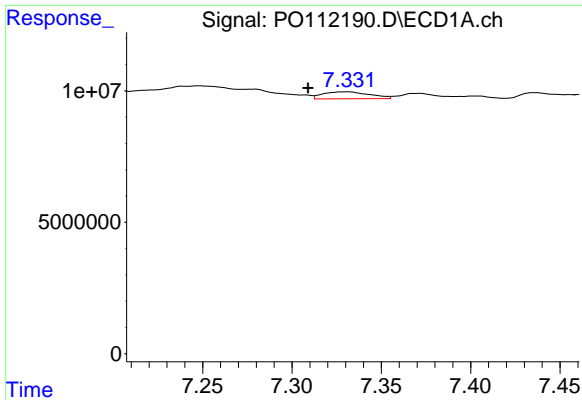
#34 AR-1260-4

R.T.: 7.074 min
 Delta R.T.: 0.007 min
 Response: 1306346
 Conc: 3.00 ng/ml



#34 AR-1260-4

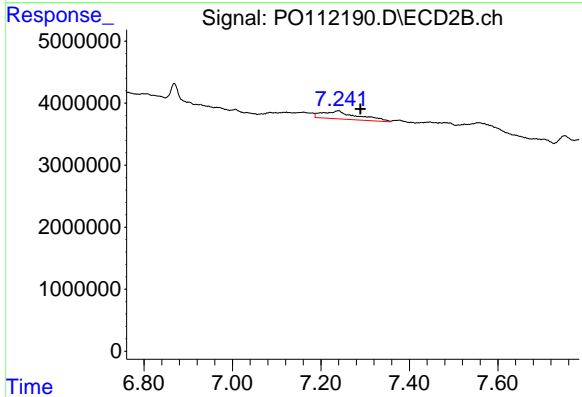
R.T.: 7.086 min
 Delta R.T.: 0.038 min
 Response: 716702
 Conc: 3.57 ng/ml



#35 AR-1260-5

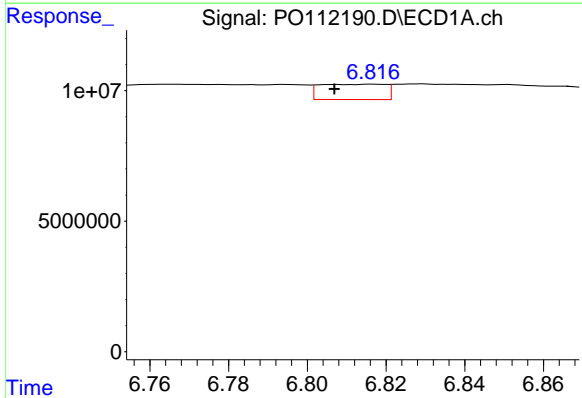
R.T.: 7.331 min
 Delta R.T.: 0.022 min
 Response: 4830803
 Conc: 3.83 ng/ml

Instrument :
 ECD_O
 ClientSampleId :
 TP-41



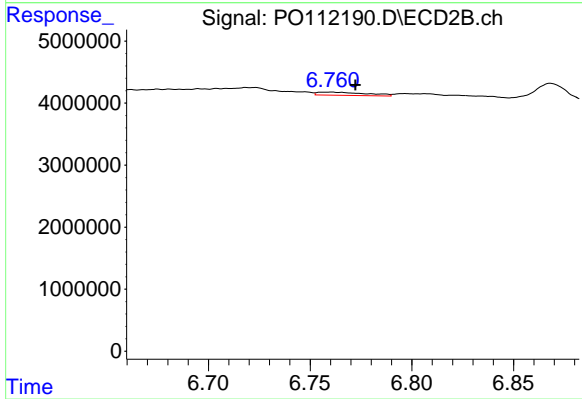
#35 AR-1260-5

R.T.: 7.239 min
 Delta R.T.: -0.051 min
 Response: 7120058
 Conc: 15.90 ng/ml



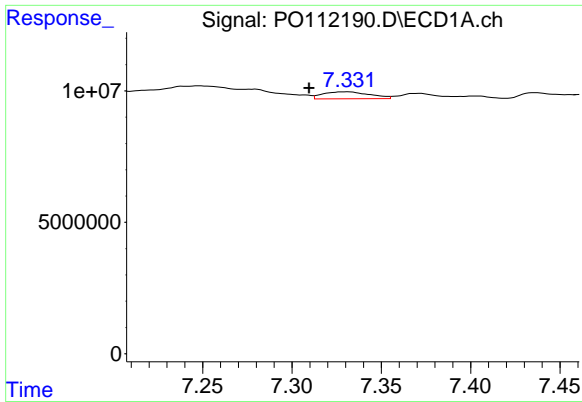
#36 AR-1262-1

R.T.: 6.817 min
 Delta R.T.: 0.010 min
 Response: 6796518
 Conc: 6.65 ng/ml



#36 AR-1262-1

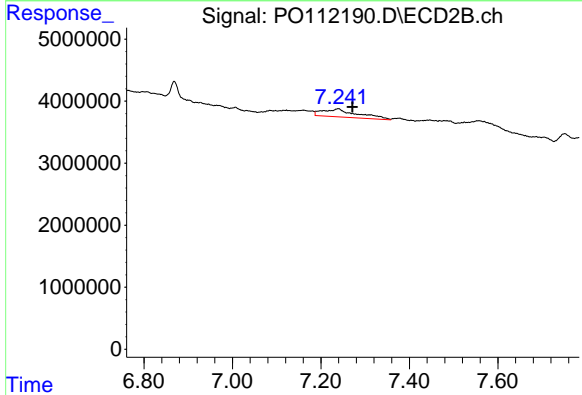
R.T.: 6.760 min
 Delta R.T.: -0.012 min
 Response: 855764
 Conc: 2.10 ng/ml



#37 AR-1262-2

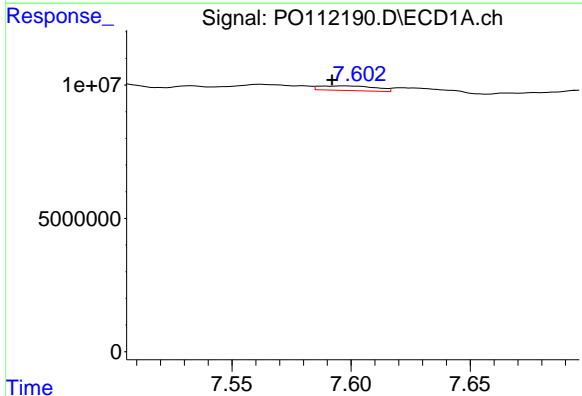
R.T.: 7.331 min
 Delta R.T.: 0.022 min
 Response: 4830803
 Conc: 2.95 ng/ml

Instrument :
 ECD_O
 ClientSampleId :
 TP-41



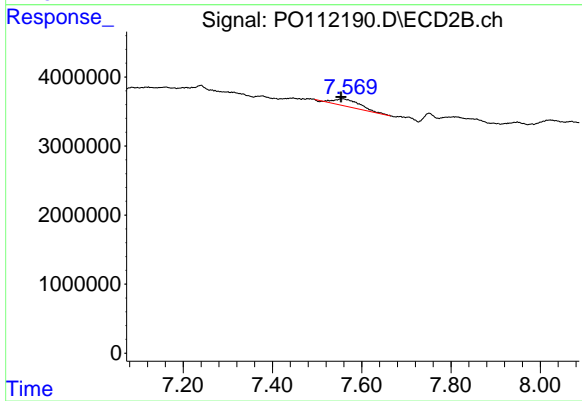
#37 AR-1262-2

R.T.: 7.239 min
 Delta R.T.: -0.033 min
 Response: 7120058
 Conc: 13.89 ng/ml



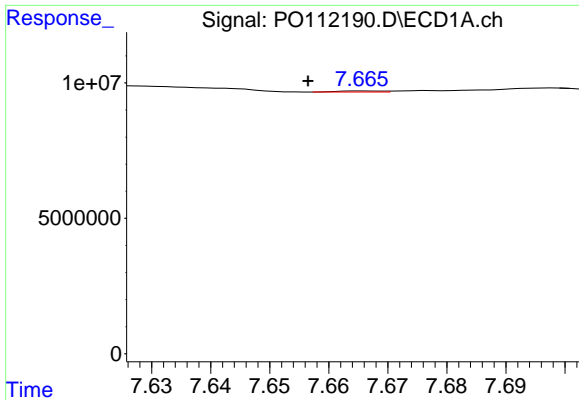
#38 AR-1262-3

R.T.: 7.597 min
 Delta R.T.: 0.005 min
 Response: 2838318
 Conc: 4.42 ng/ml



#38 AR-1262-3

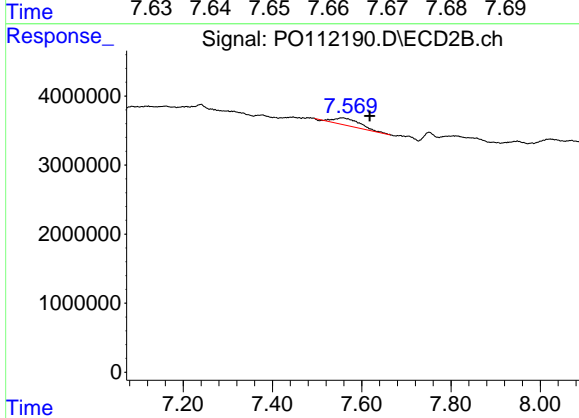
R.T.: 7.556 min
 Delta R.T.: 0.003 min
 Response: 4067988
 Conc: 22.66 ng/ml



#39 AR-1262-4

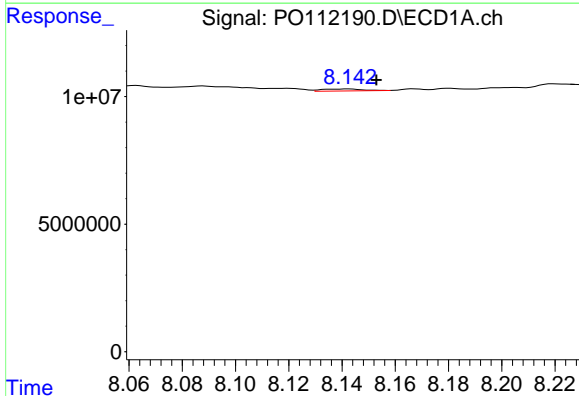
R.T.: 7.666 min
 Delta R.T.: 0.009 min
 Response: 202864
 Conc: 0.19 ng/ml

Instrument :
 ECD_O
 ClientSampleId :
 TP-41



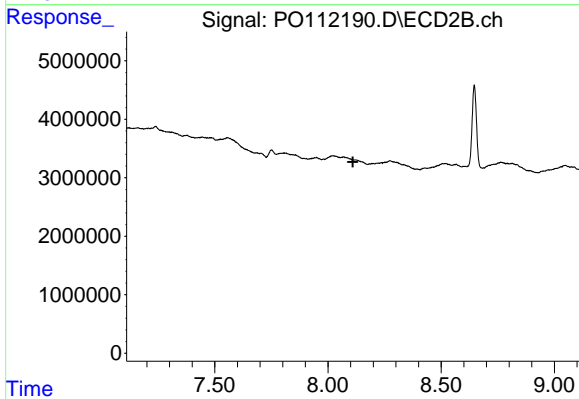
#39 AR-1262-4

R.T.: 7.556 min
 Delta R.T.: -0.062 min
 Response: 4067988
 Conc: 13.98 ng/ml



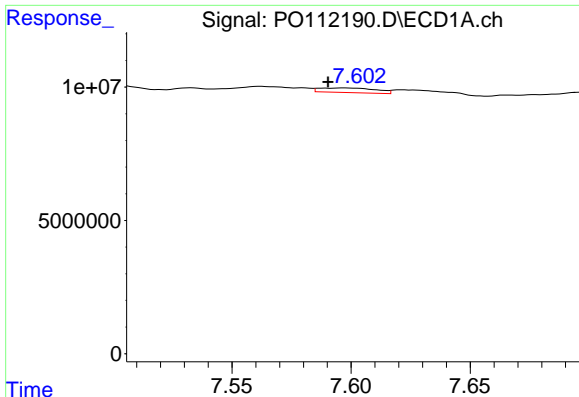
#40 AR-1262-5

R.T.: 8.143 min
 Delta R.T.: -0.010 min
 Response: 821865
 Conc: 1.83 ng/ml



#40 AR-1262-5

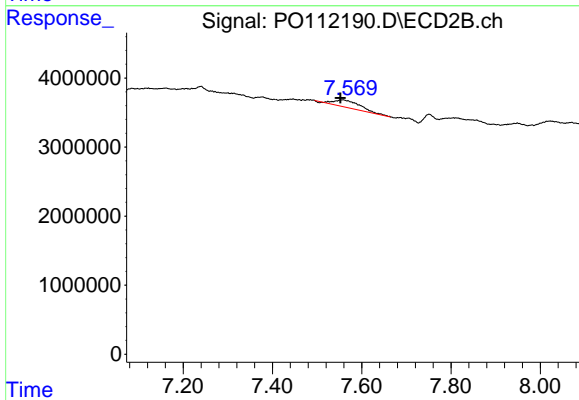
R.T.: 8.069 min
 Delta R.T.: -0.041 min
 Response: -99012
 Conc: N.D.



#41 AR-1268-1

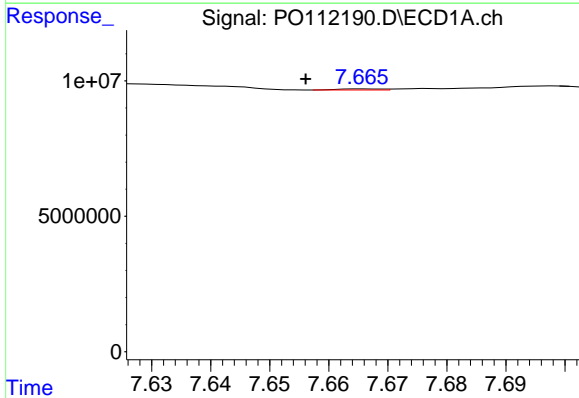
R.T.: 7.597 min
 Delta R.T.: 0.006 min
 Response: 2838318
 Conc: 1.54 ng/ml

Instrument :
 ECD_O
 ClientSampleId :
 TP-41



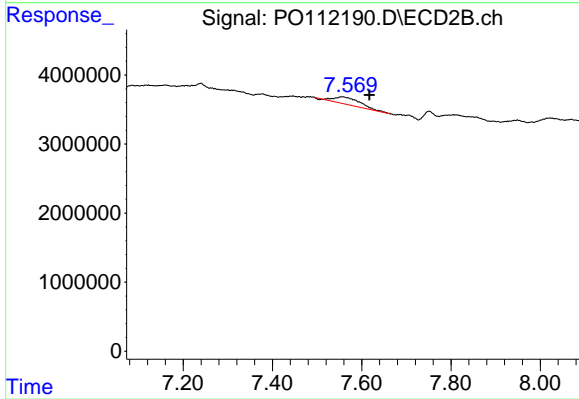
#41 AR-1268-1

R.T.: 7.556 min
 Delta R.T.: 0.004 min
 Response: 4067988
 Conc: 8.28 ng/ml



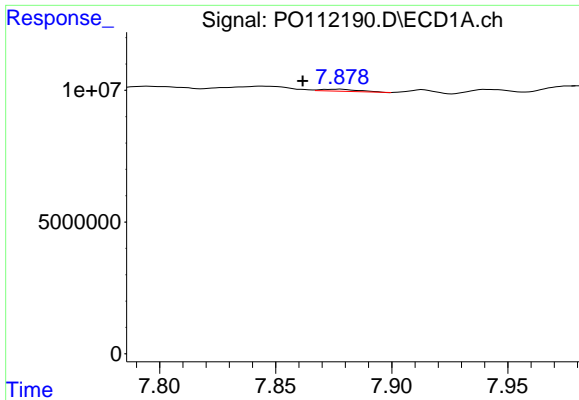
#42 AR-1268-2

R.T.: 7.666 min
 Delta R.T.: 0.010 min
 Response: 202864
 Conc: 0.13 ng/ml



#42 AR-1268-2

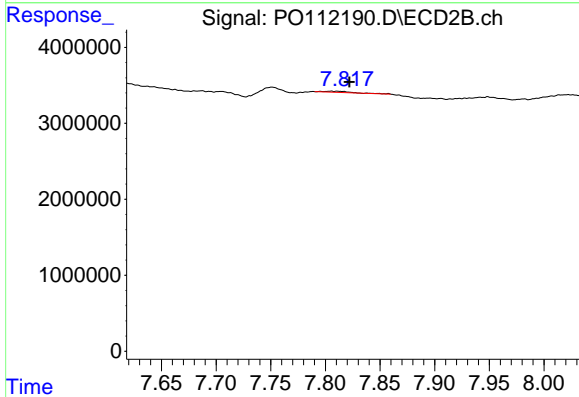
R.T.: 7.556 min
 Delta R.T.: -0.061 min
 Response: 4067988
 Conc: 9.75 ng/ml



#43 AR-1268-3

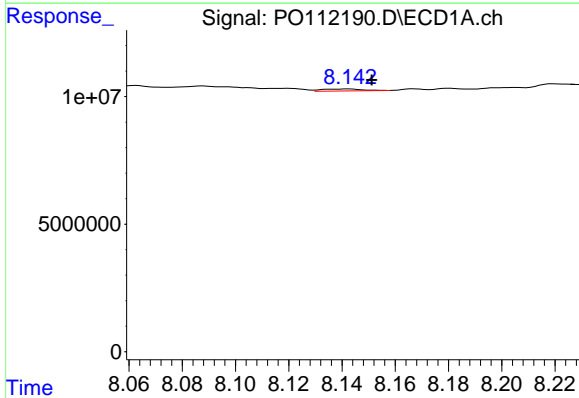
R.T.: 7.878 min
 Delta R.T.: 0.016 min
 Response: 886885
 Conc: 0.68 ng/ml

Instrument :
 ECD_O
 ClientSampleId :
 TP-41



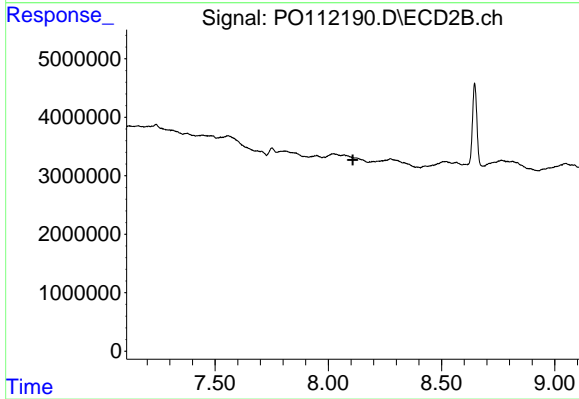
#43 AR-1268-3

R.T.: 7.806 min
 Delta R.T.: -0.015 min
 Response: 197506
 Conc: 0.62 ng/ml



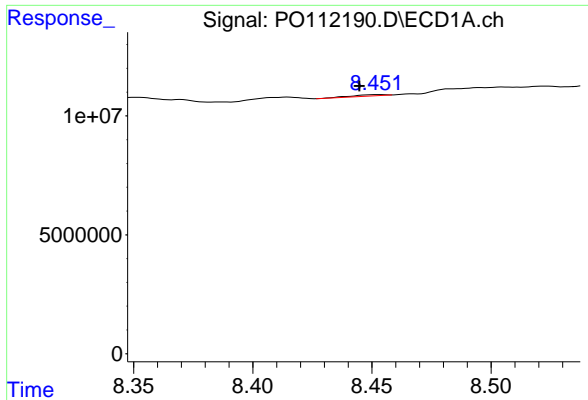
#44 AR-1268-4

R.T.: 8.143 min
 Delta R.T.: -0.009 min
 Response: 821865
 Conc: 1.71 ng/ml



#44 AR-1268-4

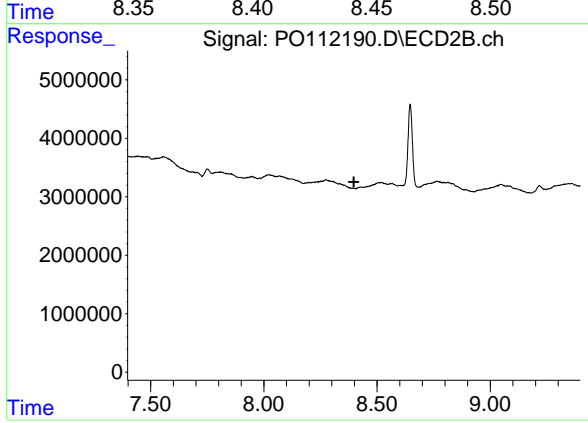
R.T.: 8.069 min
 Delta R.T.: -0.039 min
 Response: -99012
 Conc: N.D.



#45 AR-1268-5

R.T.: 8.453 min
 Delta R.T.: 0.008 min
 Response: 492431
 Conc: 0.15 ng/ml

Instrument :
 ECD_O
 ClientSampleId :
 TP-41



#45 AR-1268-5

R.T.: 0.000 min
 Exp R.T. : 8.398 min
 Response: 0
 Conc: N.D.