

Data Path : Z:\pestpcbsrv\HPCHEM1\ECD\_0\Data\P0071025\  
 Data File : P0112191.D  
 Signal(s) : Signal #1: ECD1A.ch Signal #2: ECD2B.ch  
 Acq On : 10 Jul 2025 14:58  
 Operator : YP/AJ  
 Sample : Q2543-02  
 Misc :  
 ALS Vial : 12 Sample Multiplier: 1

Instrument :  
 ECD\_0  
 ClientSampleId :  
 TP-49

Integration File signal 1: autoint1.e  
 Integration File signal 2: autoint2.e  
 Quant Time: Jul 10 15:45:11 2025  
 Quant Method : Z:\pestpcbsrv\HPCHEM1\ECD\_0\methods\P0070825.M  
 Quant Title : GC EXTRACTABLES  
 QLast Update : Wed Jul 09 10:50:50 2025  
 Response via : Initial Calibration  
 Integrator: ChemStation

Volume Inj. : 2 µl  
 Signal #1 Phase : ZB-MR1 Signal #2 Phase: ZB-MR2  
 Signal #1 Info : 30Mx0.32mmx 0.50µ Signal #2 Info : 30M x 0.32mm x 0.25µm

Compound	RT#1	RT#2	Resp#1	Resp#2	ng/ml	ng/ml
System Monitoring Compounds						
1) SA Tetrachlo...	3.670	3.665	190.5E6	115.5E6	19.256	18.134
2) SA Decachlor...	8.699	8.646	104.4E6	25791834	15.274	14.965
Target Compounds						
3) L1 AR-1016-1	4.774	4.773	38229	367636	0.112	1.650 #
4) L1 AR-1016-2	4.774	4.773	38229	367636	0.077	1.117 #
5) L1 AR-1016-3	4.839	4.961	16038	250172	0.050	1.473 #
6) L1 AR-1016-4	4.910f	4.975	230485	452811	0.898	3.300 #
7) L1 AR-1016-5	5.219	5.182	4176482	3596878	15.261	20.857 #
8) L2 AR-1221-1	3.862	3.875	583640	127068	5.005	1.544 #
9) L2 AR-1221-2	3.971	3.967	2422462	2916161	30.726	49.132 #
10) L2 AR-1221-3	4.030	4.038	145316	512181	0.539	2.713 #
11) L3 AR-1232-1	4.030	4.038	145316	512181	0.677	3.412 #
12) L3 AR-1232-2	4.542	4.773	2430966	367636	21.392	2.402 #
13) L3 AR-1232-3	4.774	4.938	38229	272291	0.167	3.606 #
14) L3 AR-1232-4	4.910f	5.023	230485	249599	2.017	3.782 #
15) L3 AR-1232-5	5.015	5.182	1605178	3596878	21.869	48.436 #
16) L4 AR-1242-1	4.774	4.745	38229	311280	0.132	1.606 #
17) L4 AR-1242-2	4.774	4.773	38229	367636	0.090	1.297 #
18) L4 AR-1242-3	4.839	4.938	16038	272291	0.059	1.869 #
19) L4 AR-1242-4	4.910f	5.023	230485	249599	1.023	1.760 #
20) L4 AR-1242-5	5.616	5.530	38791279	1863385	183.262	10.253 #
21) L5 AR-1248-1	4.774	4.745	38229	311280	0.168	2.016 #
22) L5 AR-1248-2	5.015	4.975	1605178	452811	5.206	2.201 #
23) L5 AR-1248-3	5.219	5.023	4176482	249599	10.254	1.162 #
24) L5 AR-1248-4	5.554	5.182	29632958	3596878	51.344	13.902 #
25) L5 AR-1248-5	5.616	5.633f	38791279	9662613	99.387	38.566 #
26) L6 AR-1254-1	5.554	5.530	29632958	1863385	48.175	4.889 #
27) L6 AR-1254-2	5.721	5.716	2864926	7932063	5.348	23.905 #
28) L6 AR-1254-3	6.119	6.081	4757964	2490753	5.667	5.167
29) L6 AR-1254-4	6.375	6.283	125097	2566118	0.260	9.843 #
30) L6 AR-1254-5	6.779	6.709	13195582	944326	17.050	2.650 #
31) L7 AR-1260-1	6.239	6.210	12223264	7799863	24.386	27.801
32) L7 AR-1260-2	6.449	6.417	2810213	2376456	3.807	6.990 #
33) L7 AR-1260-3	6.812	6.585	6440836	201037	9.826	0.729 #
34) L7 AR-1260-4	7.097	7.063	2848026	446436	6.543	2.225 #
35) L7 AR-1260-5	7.314	7.304	5866821	594803	4.647	1.328 #
36) L8 AR-1262-1	6.812	6.796	6440836	96483	6.304	0.237 #
37) L8 AR-1262-2	7.314	7.266	5866821	1753847	3.579	3.422
38) L8 AR-1262-3	7.590	7.553	1181523	1034017	1.840	5.760 #
39) L8 AR-1262-4	7.665	7.603	3196403	115791	2.983	0.398 #
40) L8 AR-1262-5	8.143	8.115	19394768	114715	43.278	1.084 #
41) L9 AR-1268-1	7.590	7.553	1181523	1034017	0.643	2.104 #

Data Path : Z:\pestpcbsrv\HPCHEM1\ECD\_0\Data\P0071025\  
 Data File : P0112191.D  
 Signal(s) : Signal #1: ECD1A.ch Signal #2: ECD2B.ch  
 Acq On : 10 Jul 2025 14:58  
 Operator : YP/AJ  
 Sample : Q2543-02  
 Misc :  
 ALS Vial : 12 Sample Multiplier: 1

Instrument :  
 ECD\_0  
 ClientSampleId :  
 TP-49

Integration File signal 1: autoint1.e  
 Integration File signal 2: autoint2.e  
 Quant Time: Jul 10 15:45:11 2025  
 Quant Method : Z:\pestpcbsrv\HPCHEM1\ECD\_0\methods\P0070825.M  
 Quant Title : GC EXTRACTABLES  
 QLast Update : Wed Jul 09 10:50:50 2025  
 Response via : Initial Calibration  
 Integrator: ChemStation

Volume Inj. : 2 µl  
 Signal #1 Phase : ZB-MR1 Signal #2 Phase: ZB-MR2  
 Signal #1 Info : 30Mx0.32mmx 0.50µ Signal #2 Info : 30M x 0.32mm x 0.25µm

	Compound	RT#1	RT#2	Resp#1	Resp#2	ng/ml	ng/ml
42)	L9 AR-1268-2	7.665	7.603	3196403	115791	2.052	0.278 #
43)	L9 AR-1268-3	7.851	7.809	5369258	1106222	4.131	3.496
44)	L9 AR-1268-4	8.143	8.102	19394768	58780	40.371	0.527 #
45)	L9 AR-1268-5	8.424	8.393	6148435	1061152	1.884	1.461

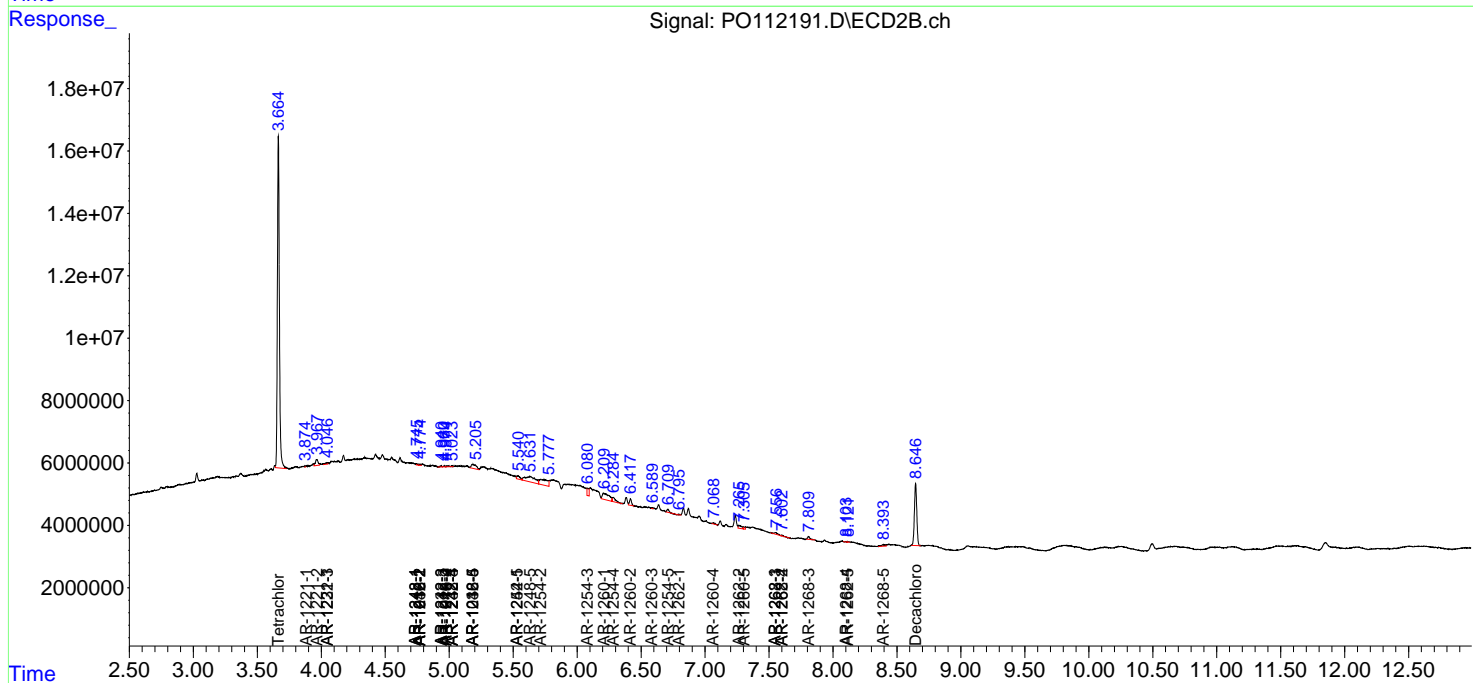
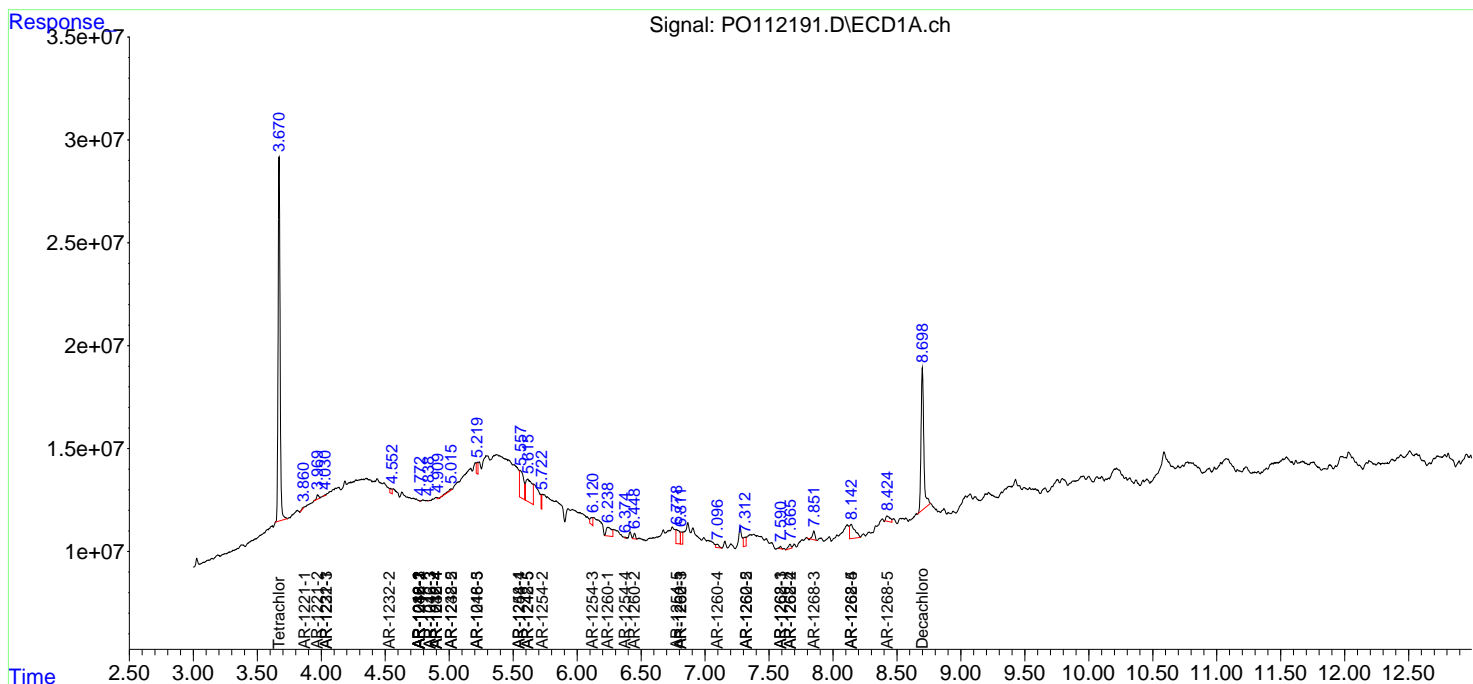
(f)=RT Delta > 1/2 Window (#)=Amounts differ by > 25% (m)=manual int.

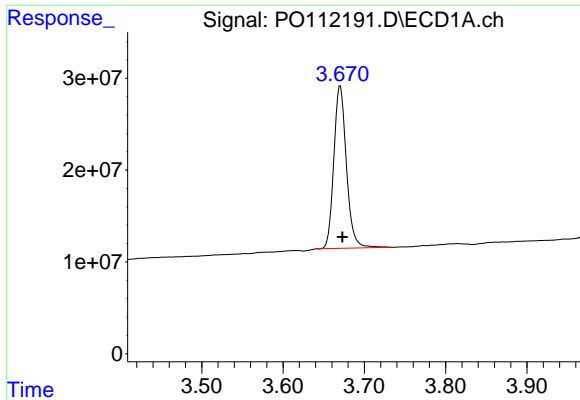
Data Path : Z:\pestpcbsrv\HPCHEM1\ECD\_O\Data\PO071025\  
 Data File : PO112191.D  
 Signal(s) : Signal #1: ECD1A.ch Signal #2: ECD2B.ch  
 Acq On : 10 Jul 2025 14:58  
 Operator : YP/AJ  
 Sample : Q2543-02  
 Misc :  
 ALS Vial : 12 Sample Multiplier: 1

Instrument :  
 ECD\_O  
 ClientSampleId :  
 TP-49

Integration File signal 1: autoint1.e  
 Integration File signal 2: autoint2.e  
 Quant Time: Jul 10 15:45:11 2025  
 Quant Method : Z:\pestpcbsrv\HPCHEM1\ECD\_O\methods\PO070825.M  
 Quant Title : GC EXTRACTABLES  
 QLast Update : Wed Jul 09 10:50:50 2025  
 Response via : Initial Calibration  
 Integrator: ChemStation

Volume Inj. : 2 µl  
 Signal #1 Phase : ZB-MR1 Signal #2 Phase: ZB-MR2  
 Signal #1 Info : 30Mx0.32mmx 0.50µ Signal #2 Info : 30M x 0.32mm x 0.25µm

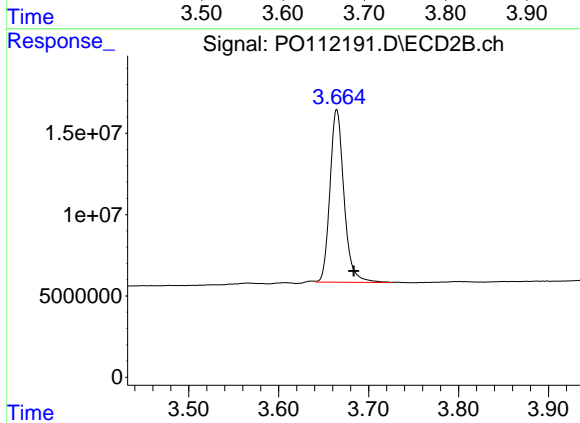




#1 Tetrachloro-m-xylene

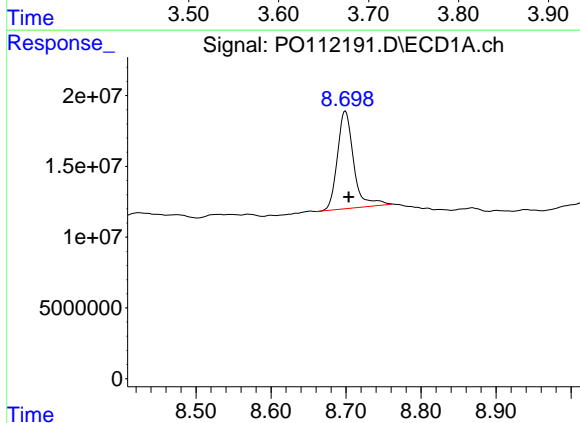
R.T.: 3.670 min  
 Delta R.T.: -0.003 min  
 Response: 190529388  
 Conc: 19.26 ng/ml

Instrument :  
 ECD\_O  
 ClientSampleId :  
 TP-49



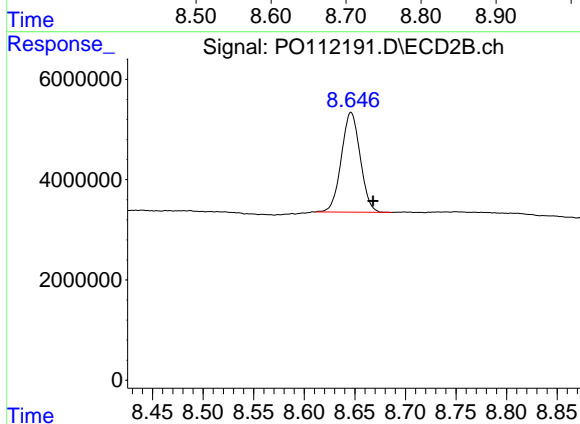
#1 Tetrachloro-m-xylene

R.T.: 3.665 min  
 Delta R.T.: -0.019 min  
 Response: 115534332  
 Conc: 18.13 ng/ml



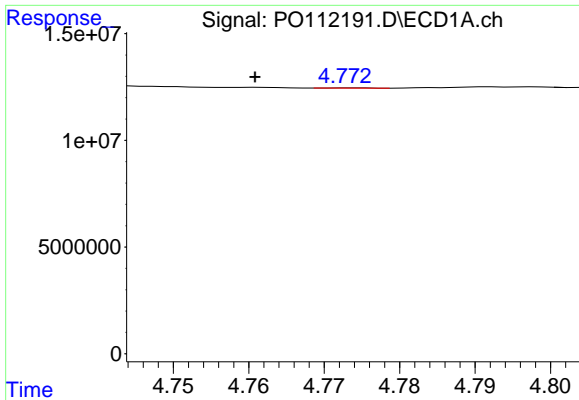
#2 Decachlorobiphenyl

R.T.: 8.699 min  
 Delta R.T.: -0.004 min  
 Response: 104431158  
 Conc: 15.27 ng/ml



#2 Decachlorobiphenyl

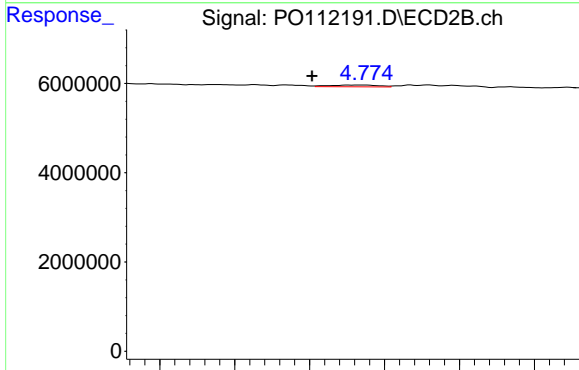
R.T.: 8.646 min  
 Delta R.T.: -0.022 min  
 Response: 25791834  
 Conc: 14.97 ng/ml



#3 AR-1016-1

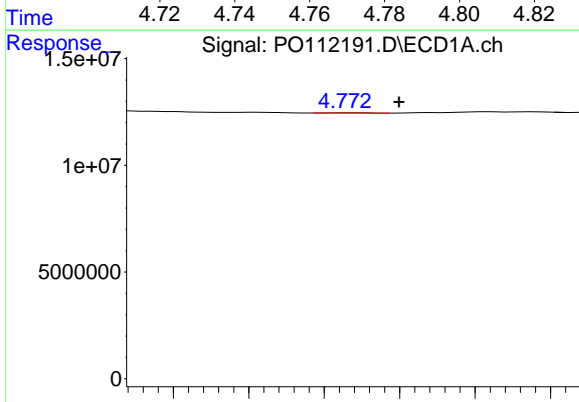
R.T.: 4.774 min  
 Delta R.T.: 0.013 min  
 Response: 38229  
 Conc: 0.11 ng/ml

Instrument :  
 ECD\_O  
 ClientSampleId :  
 TP-49



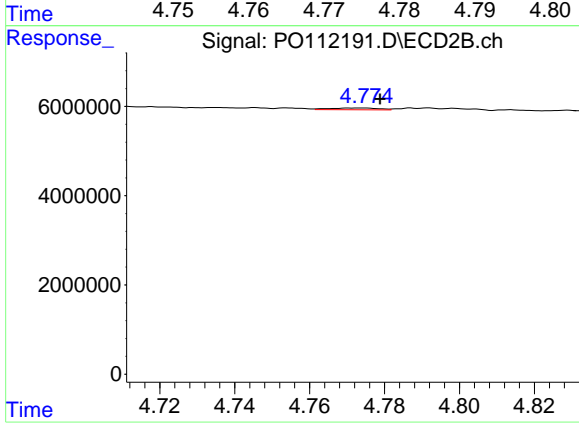
#3 AR-1016-1

R.T.: 4.773 min  
 Delta R.T.: 0.012 min  
 Response: 367636  
 Conc: 1.65 ng/ml



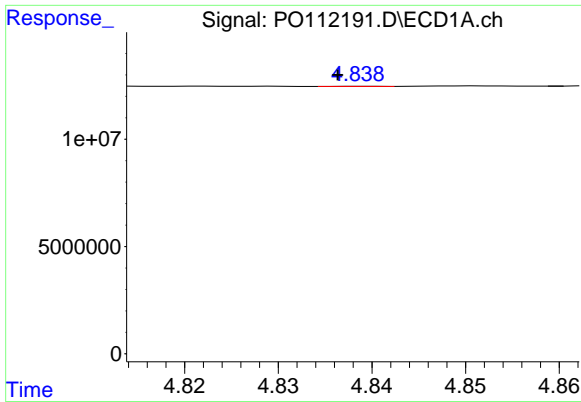
#4 AR-1016-2

R.T.: 4.774 min  
 Delta R.T.: -0.006 min  
 Response: 38229  
 Conc: 0.08 ng/ml



#4 AR-1016-2

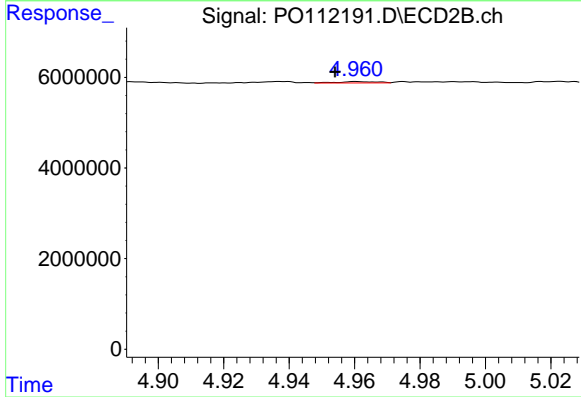
R.T.: 4.773 min  
 Delta R.T.: -0.006 min  
 Response: 367636  
 Conc: 1.12 ng/ml



#5 AR-1016-3

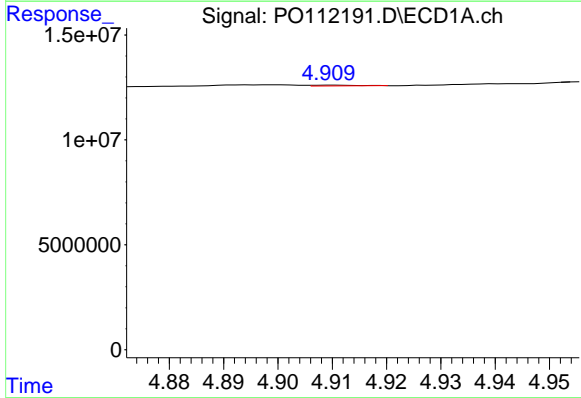
R.T.: 4.839 min  
 Delta R.T.: 0.003 min  
 Response: 16038  
 Conc: 0.05 ng/ml

Instrument :  
 ECD\_O  
 ClientSampleId :  
 TP-49



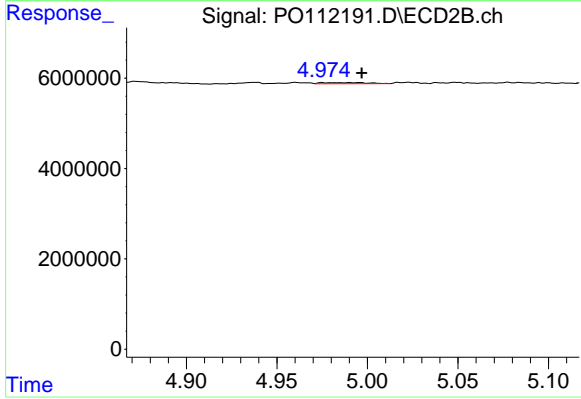
#5 AR-1016-3

R.T.: 4.961 min  
 Delta R.T.: 0.007 min  
 Response: 250172  
 Conc: 1.47 ng/ml



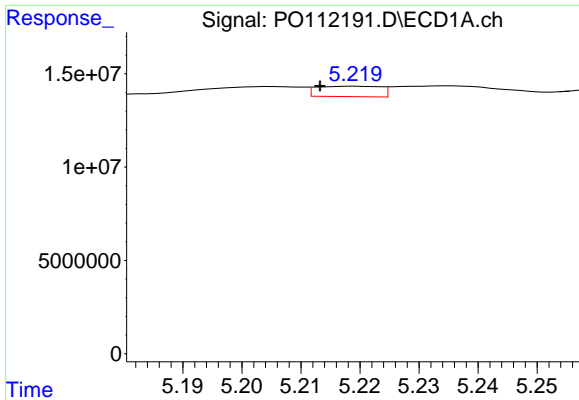
#6 AR-1016-4

R.T.: 4.910 min  
 Delta R.T.: -0.046 min  
 Response: 230485  
 Conc: 0.90 ng/ml



#6 AR-1016-4

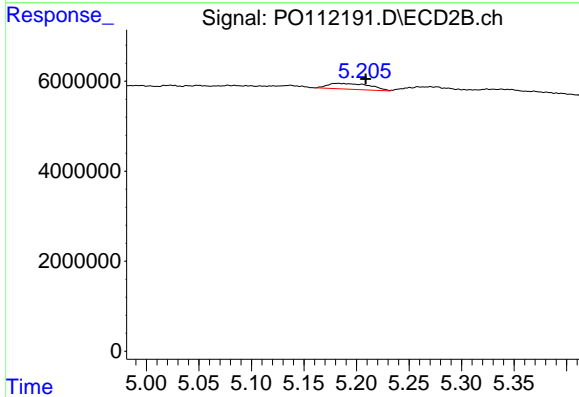
R.T.: 4.975 min  
 Delta R.T.: -0.022 min  
 Response: 452811  
 Conc: 3.30 ng/ml



#7 AR-1016-5

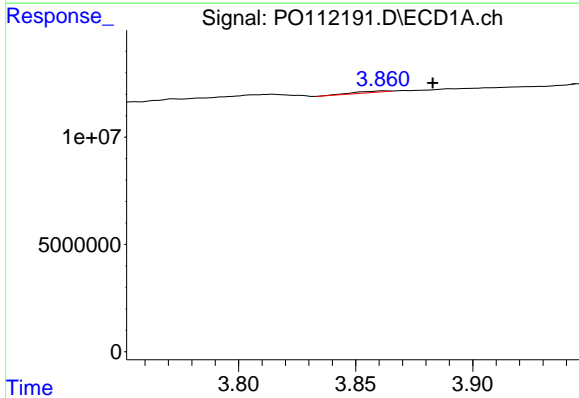
R.T.: 5.219 min  
 Delta R.T.: 0.006 min  
 Response: 4176482  
 Conc: 15.26 ng/ml

Instrument :  
 ECD\_O  
 ClientSampleId :  
 TP-49



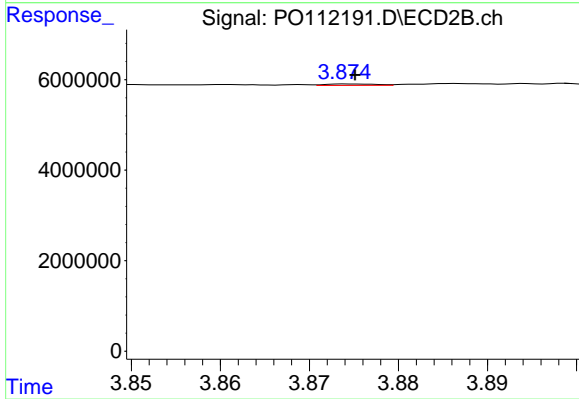
#7 AR-1016-5

R.T.: 5.182 min  
 Delta R.T.: -0.027 min  
 Response: 3596878  
 Conc: 20.86 ng/ml



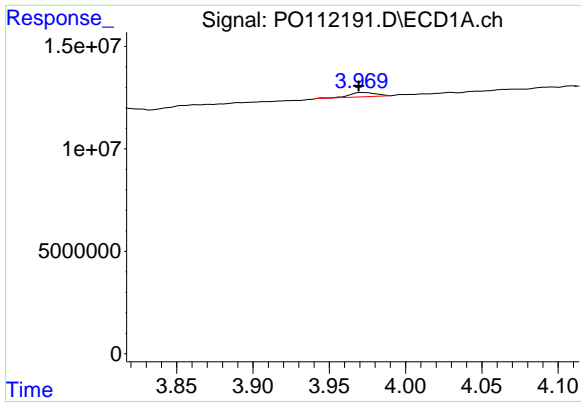
#8 AR-1221-1

R.T.: 3.862 min  
 Delta R.T.: -0.021 min  
 Response: 583640  
 Conc: 5.00 ng/ml



#8 AR-1221-1

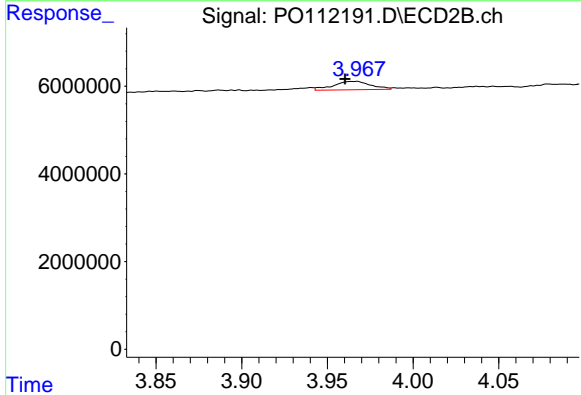
R.T.: 3.875 min  
 Delta R.T.: 0.000 min  
 Response: 127068  
 Conc: 1.54 ng/ml



#9 AR-1221-2

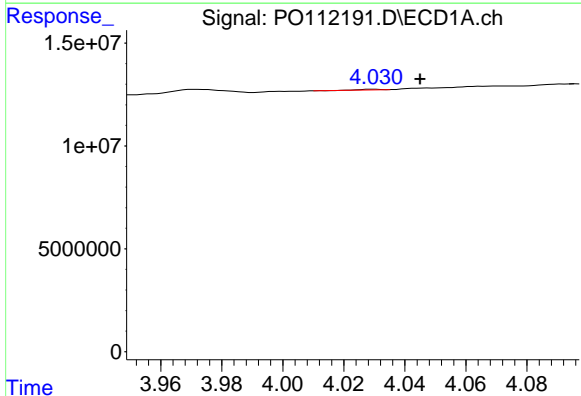
R.T.: 3.971 min  
 Delta R.T.: 0.002 min  
 Response: 2422462  
 Conc: 30.73 ng/ml

Instrument :  
 ECD\_O  
 ClientSampleId :  
 TP-49



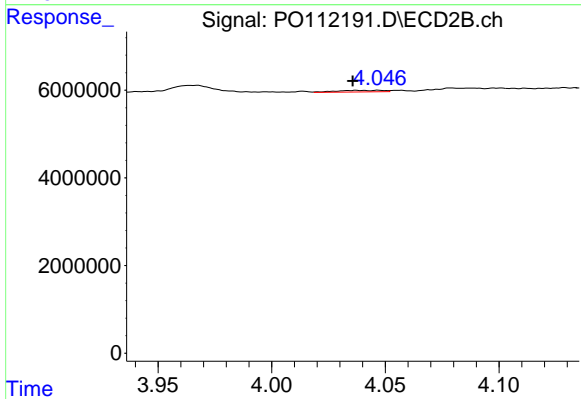
#9 AR-1221-2

R.T.: 3.967 min  
 Delta R.T.: 0.007 min  
 Response: 2916161  
 Conc: 49.13 ng/ml



#10 AR-1221-3

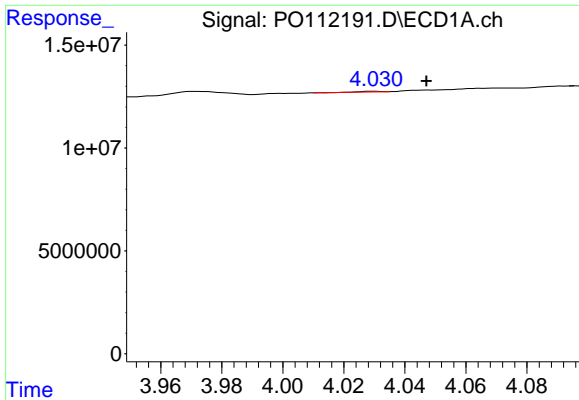
R.T.: 4.030 min  
 Delta R.T.: -0.015 min  
 Response: 145316  
 Conc: 0.54 ng/ml



#10 AR-1221-3

R.T.: 4.038 min  
 Delta R.T.: 0.002 min  
 Response: 512181  
 Conc: 2.71 ng/ml

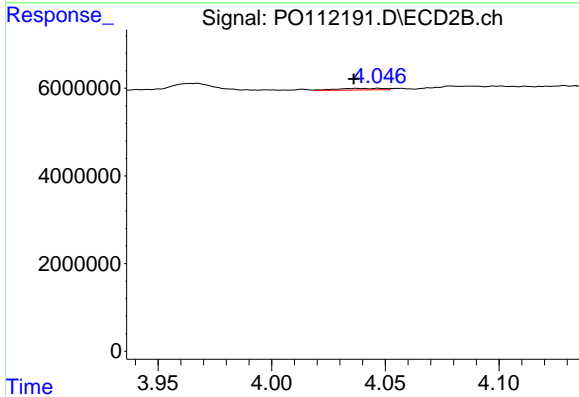




#11 AR-1232-1

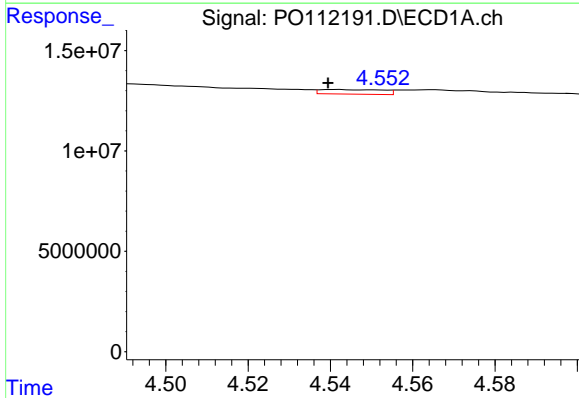
R.T.: 4.030 min  
 Delta R.T.: -0.017 min  
 Response: 145316  
 Conc: 0.68 ng/ml

Instrument :  
 ECD\_O  
 ClientSampleId :  
 TP-49



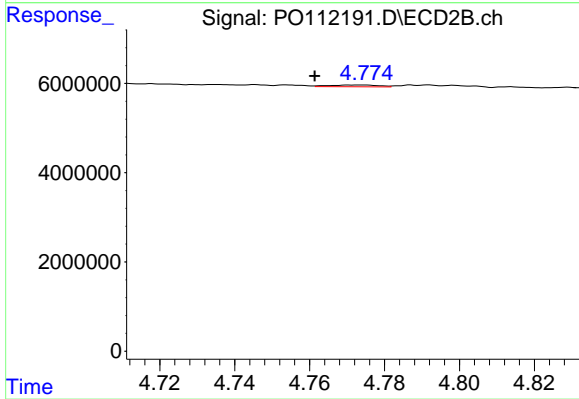
#11 AR-1232-1

R.T.: 4.038 min  
 Delta R.T.: 0.002 min  
 Response: 512181  
 Conc: 3.41 ng/ml



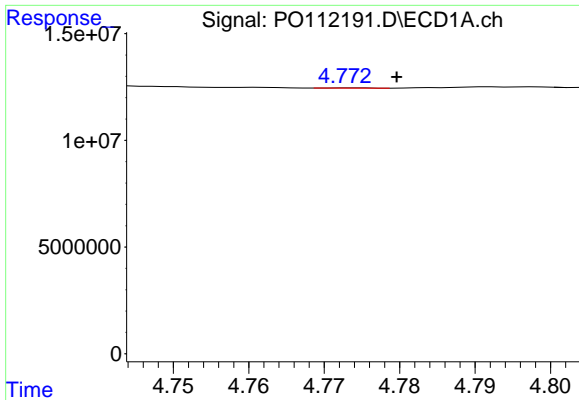
#12 AR-1232-2

R.T.: 4.542 min  
 Delta R.T.: 0.002 min  
 Response: 2430966  
 Conc: 21.39 ng/ml



#12 AR-1232-2

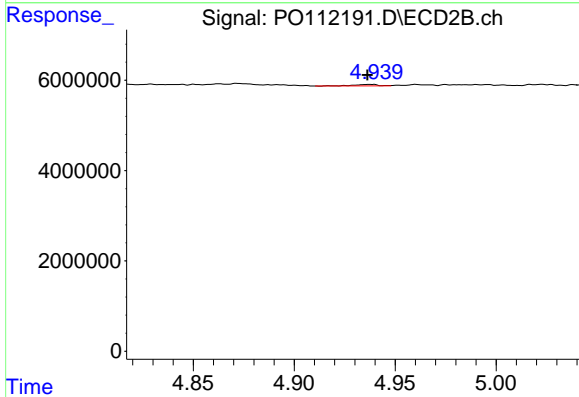
R.T.: 4.773 min  
 Delta R.T.: 0.012 min  
 Response: 367636  
 Conc: 2.40 ng/ml



#13 AR-1232-3

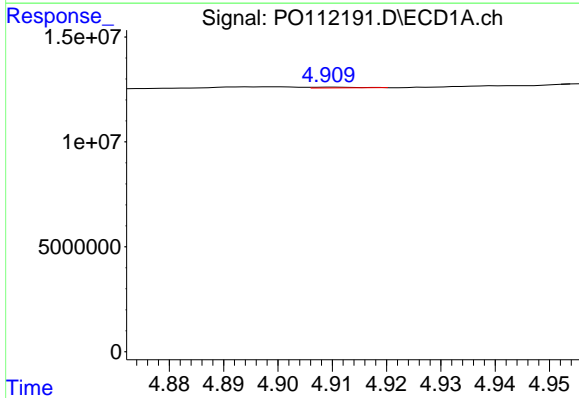
R.T.: 4.774 min  
 Delta R.T.: -0.006 min  
 Response: 38229  
 Conc: 0.17 ng/ml

Instrument :  
 ECD\_O  
 ClientSampleId :  
 TP-49



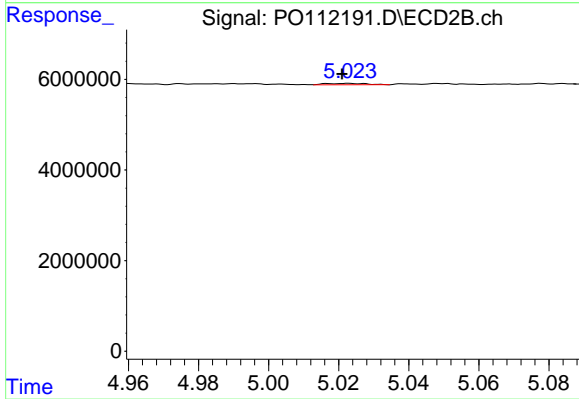
#13 AR-1232-3

R.T.: 4.938 min  
 Delta R.T.: 0.002 min  
 Response: 272291  
 Conc: 3.61 ng/ml



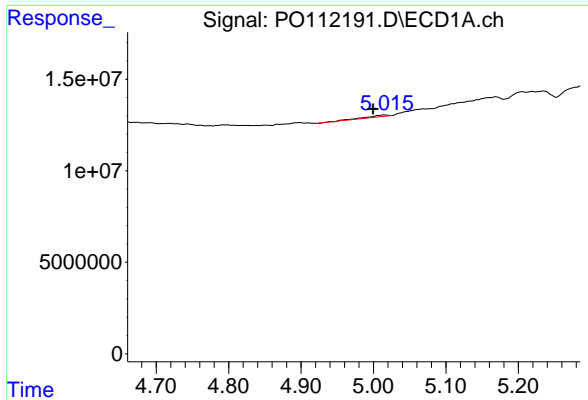
#14 AR-1232-4

R.T.: 4.910 min  
 Delta R.T.: -0.046 min  
 Response: 230485  
 Conc: 2.02 ng/ml



#14 AR-1232-4

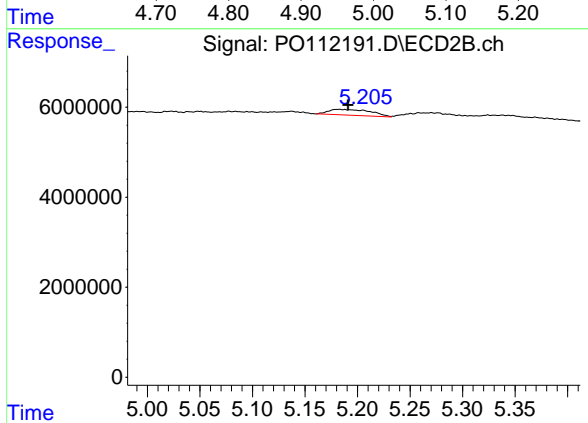
R.T.: 5.023 min  
 Delta R.T.: 0.002 min  
 Response: 249599  
 Conc: 3.78 ng/ml



#15 AR-1232-5

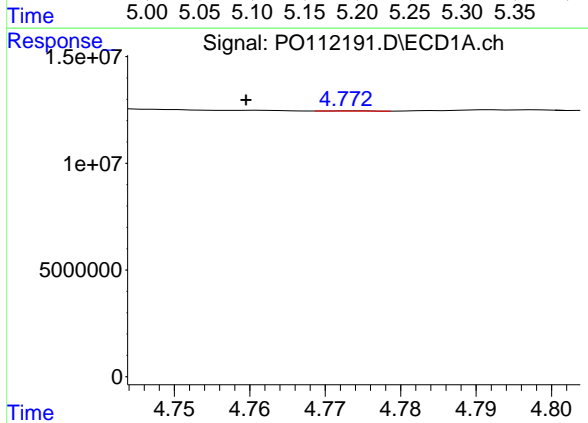
R.T.: 5.015 min  
 Delta R.T.: 0.015 min  
 Response: 1605178  
 Conc: 21.87 ng/ml

Instrument :  
 ECD\_O  
 ClientSampleId :  
 TP-49



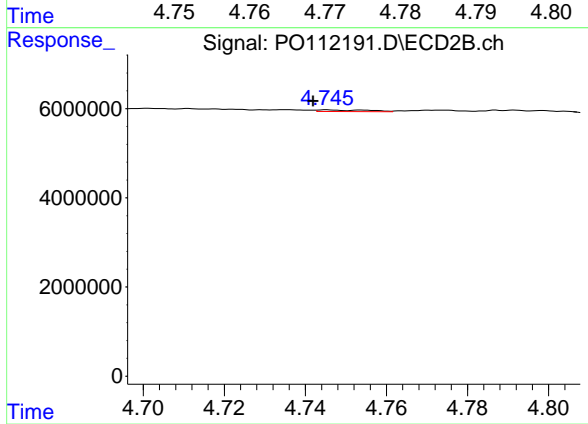
#15 AR-1232-5

R.T.: 5.182 min  
 Delta R.T.: -0.009 min  
 Response: 3596878  
 Conc: 48.44 ng/ml



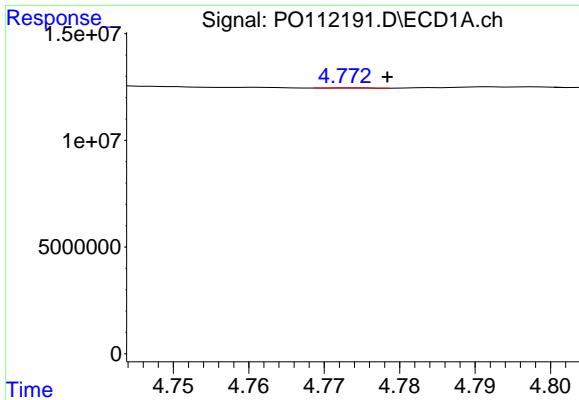
#16 AR-1242-1

R.T.: 4.774 min  
 Delta R.T.: 0.014 min  
 Response: 38229  
 Conc: 0.13 ng/ml



#16 AR-1242-1

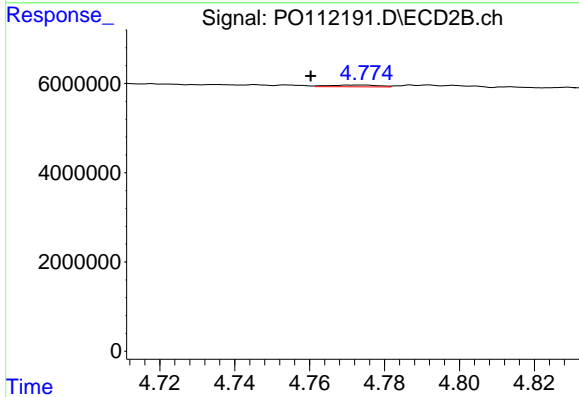
R.T.: 4.745 min  
 Delta R.T.: 0.003 min  
 Response: 311280  
 Conc: 1.61 ng/ml



#17 AR-1242-2

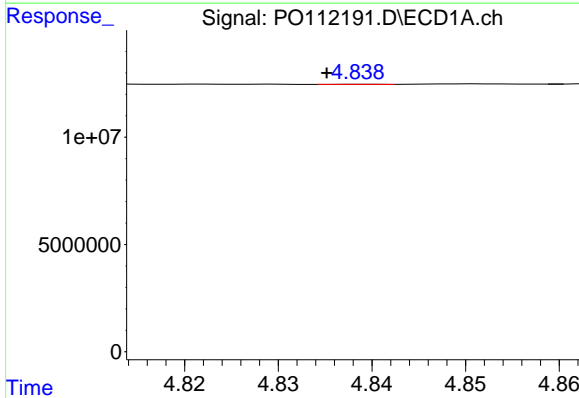
R.T.: 4.774 min  
 Delta R.T.: -0.005 min  
 Response: 38229  
 Conc: 0.09 ng/ml

Instrument :  
 ECD\_O  
 ClientSampleId :  
 TP-49



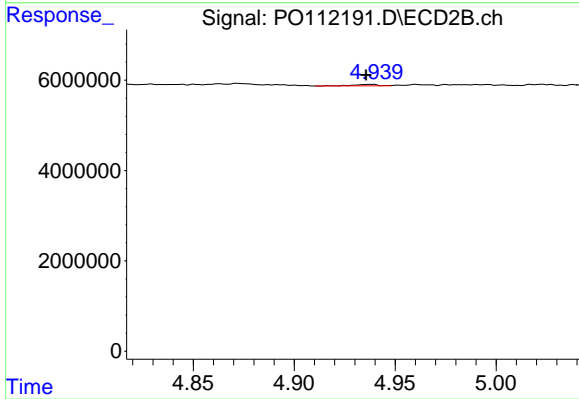
#17 AR-1242-2

R.T.: 4.773 min  
 Delta R.T.: 0.013 min  
 Response: 367636  
 Conc: 1.30 ng/ml



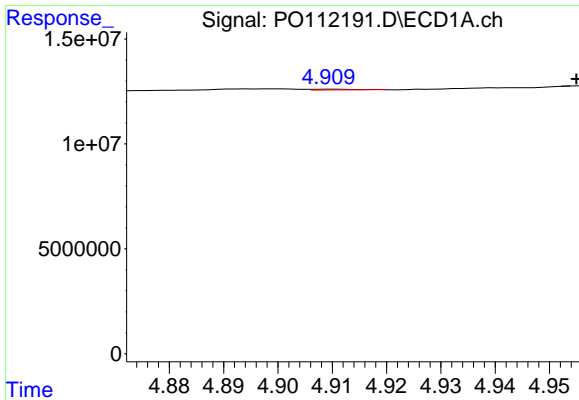
#18 AR-1242-3

R.T.: 4.839 min  
 Delta R.T.: 0.004 min  
 Response: 16038  
 Conc: 0.06 ng/ml



#18 AR-1242-3

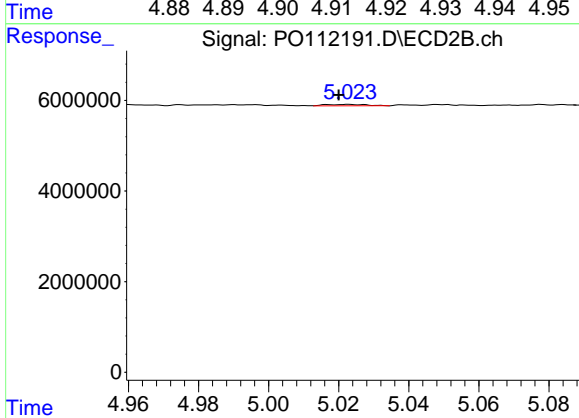
R.T.: 4.938 min  
 Delta R.T.: 0.002 min  
 Response: 272291  
 Conc: 1.87 ng/ml



#19 AR-1242-4

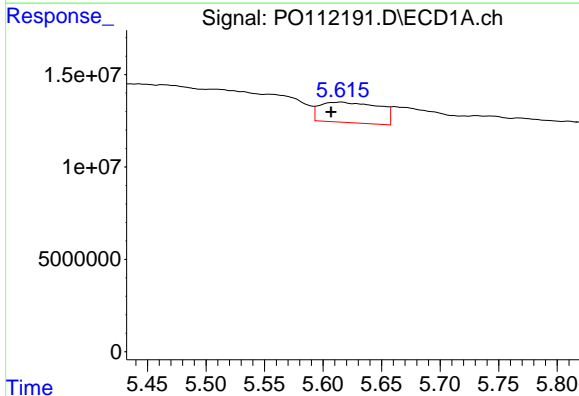
R.T.: 4.910 min  
 Delta R.T.: -0.045 min  
 Response: 230485  
 Conc: 1.02 ng/ml

Instrument :  
 ECD\_O  
 ClientSampleId :  
 TP-49



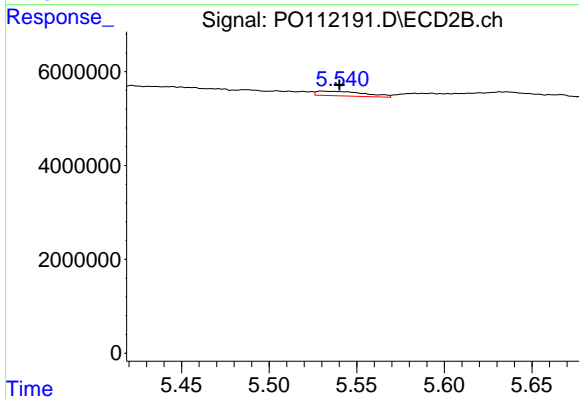
#19 AR-1242-4

R.T.: 5.023 min  
 Delta R.T.: 0.003 min  
 Response: 249599  
 Conc: 1.76 ng/ml



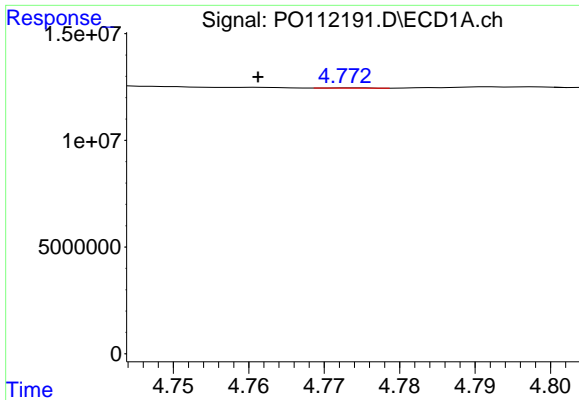
#20 AR-1242-5

R.T.: 5.616 min  
 Delta R.T.: 0.009 min  
 Response: 38791279  
 Conc: 183.26 ng/ml



#20 AR-1242-5

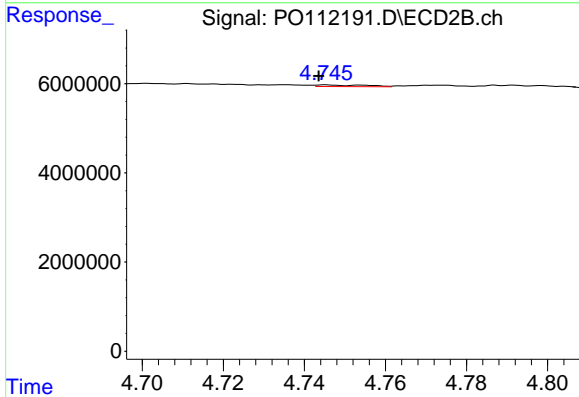
R.T.: 5.530 min  
 Delta R.T.: -0.010 min  
 Response: 1863385  
 Conc: 10.25 ng/ml



#21 AR-1248-1

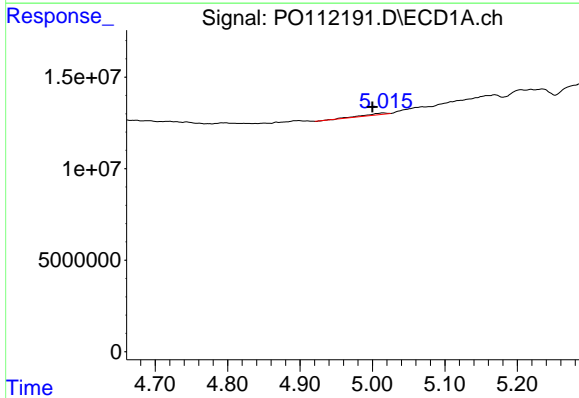
R.T.: 4.774 min  
 Delta R.T.: 0.012 min  
 Response: 38229  
 Conc: 0.17 ng/ml

Instrument :  
 ECD\_O  
 ClientSampleId :  
 TP-49



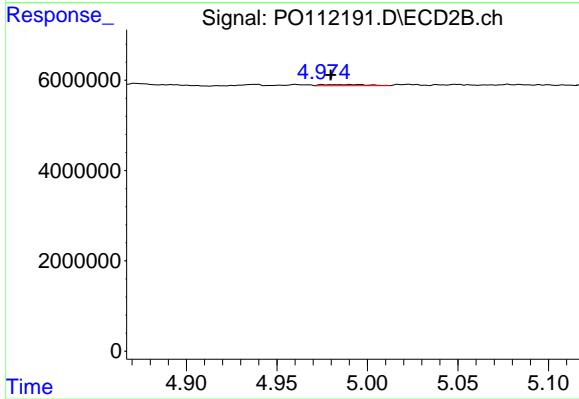
#21 AR-1248-1

R.T.: 4.745 min  
 Delta R.T.: 0.002 min  
 Response: 311280  
 Conc: 2.02 ng/ml



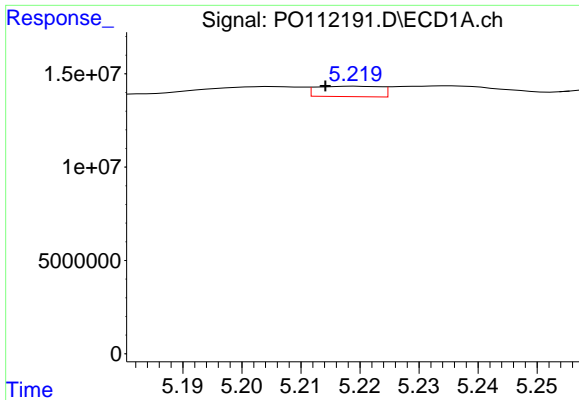
#22 AR-1248-2

R.T.: 5.015 min  
 Delta R.T.: 0.015 min  
 Response: 1605178  
 Conc: 5.21 ng/ml



#22 AR-1248-2

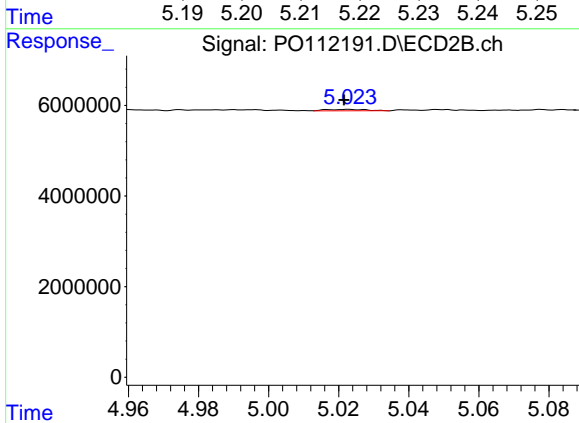
R.T.: 4.975 min  
 Delta R.T.: -0.005 min  
 Response: 452811  
 Conc: 2.20 ng/ml



#23 AR-1248-3

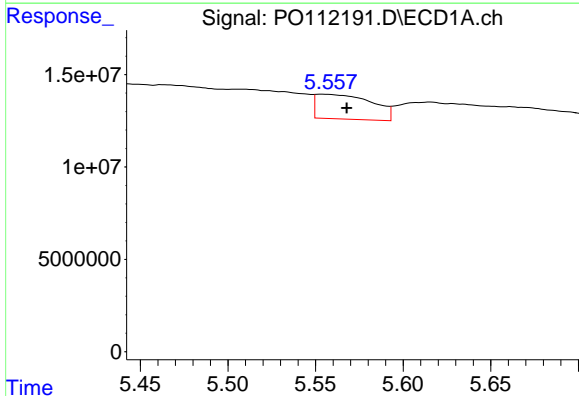
R.T.: 5.219 min  
 Delta R.T.: 0.005 min  
 Response: 4176482  
 Conc: 10.25 ng/ml

Instrument :  
 ECD\_O  
 ClientSampleId :  
 TP-49



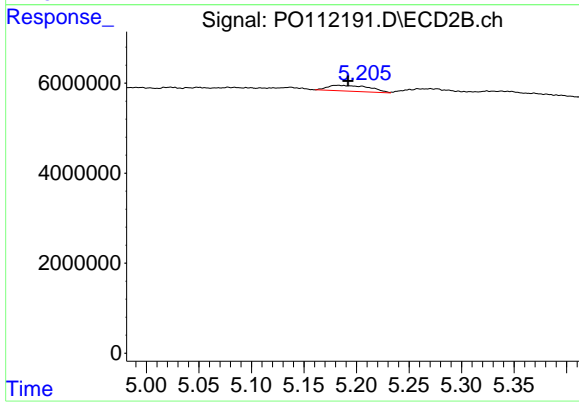
#23 AR-1248-3

R.T.: 5.023 min  
 Delta R.T.: 0.001 min  
 Response: 249599  
 Conc: 1.16 ng/ml



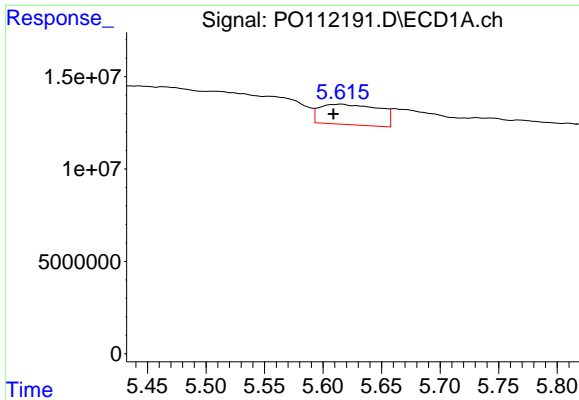
#24 AR-1248-4

R.T.: 5.554 min  
 Delta R.T.: -0.014 min  
 Response: 29632958  
 Conc: 51.34 ng/ml



#24 AR-1248-4

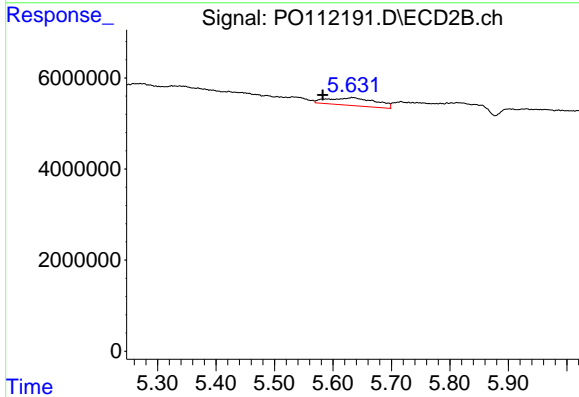
R.T.: 5.182 min  
 Delta R.T.: -0.010 min  
 Response: 3596878  
 Conc: 13.90 ng/ml



#25 AR-1248-5

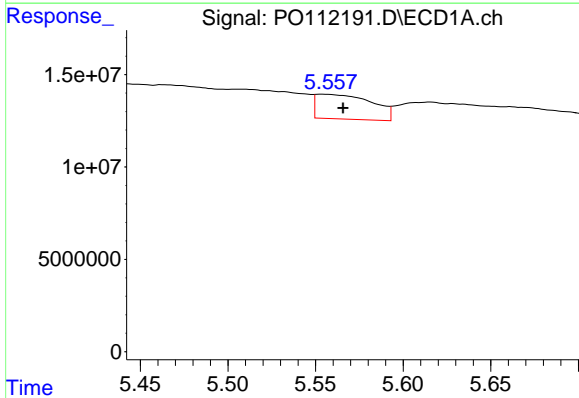
R.T.: 5.616 min  
 Delta R.T.: 0.007 min  
 Response: 38791279  
 Conc: 99.39 ng/ml

Instrument :  
 ECD\_O  
 ClientSampleId :  
 TP-49



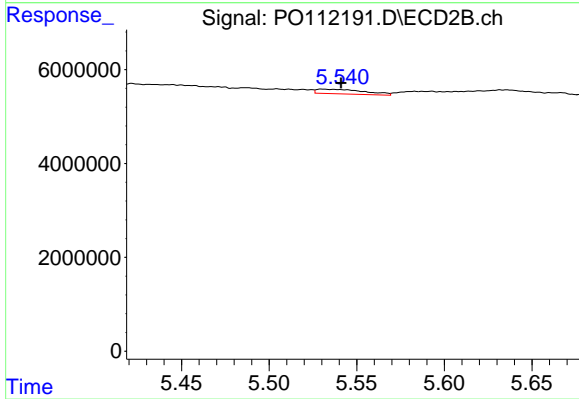
#25 AR-1248-5

R.T.: 5.633 min  
 Delta R.T.: 0.050 min  
 Response: 9662613  
 Conc: 38.57 ng/ml



#26 AR-1254-1

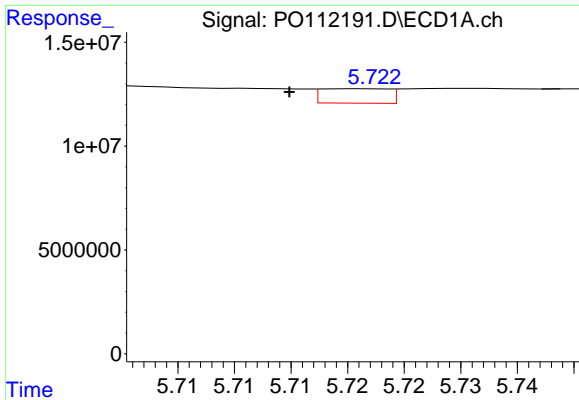
R.T.: 5.554 min  
 Delta R.T.: -0.012 min  
 Response: 29632958  
 Conc: 48.17 ng/ml



#26 AR-1254-1

R.T.: 5.530 min  
 Delta R.T.: -0.011 min  
 Response: 1863385  
 Conc: 4.89 ng/ml

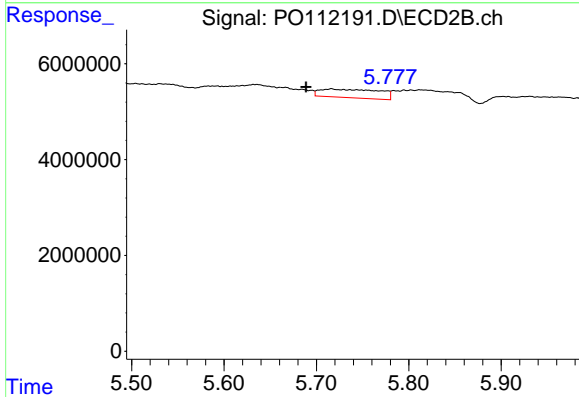




#27 AR-1254-2

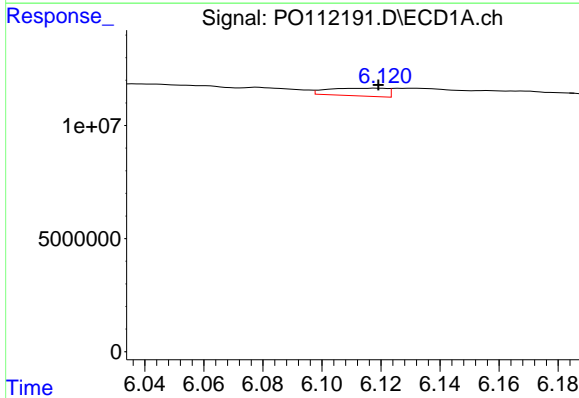
R.T.: 5.721 min  
 Delta R.T.: 0.006 min  
 Response: 2864926  
 Conc: 5.35 ng/ml

Instrument :  
 ECD\_O  
 ClientSampleId :  
 TP-49



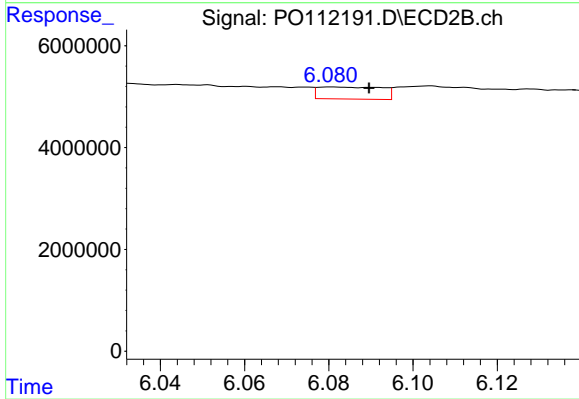
#27 AR-1254-2

R.T.: 5.716 min  
 Delta R.T.: 0.028 min  
 Response: 7932063  
 Conc: 23.91 ng/ml



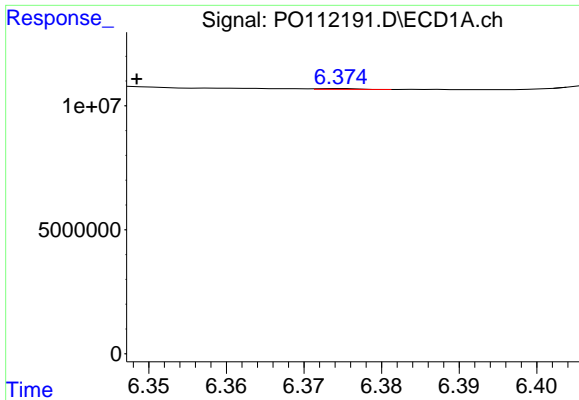
#28 AR-1254-3

R.T.: 6.119 min  
 Delta R.T.: 0.000 min  
 Response: 4757964  
 Conc: 5.67 ng/ml



#28 AR-1254-3

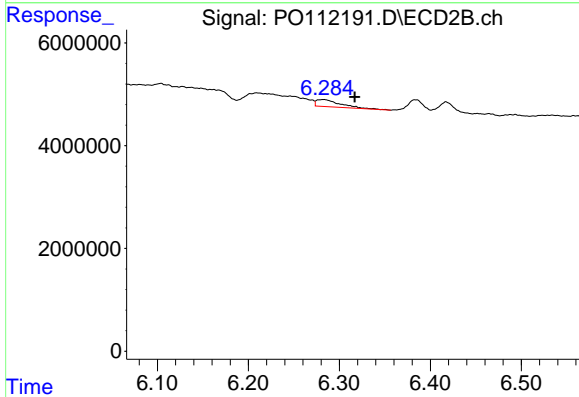
R.T.: 6.081 min  
 Delta R.T.: -0.009 min  
 Response: 2490753  
 Conc: 5.17 ng/ml



#29 AR-1254-4

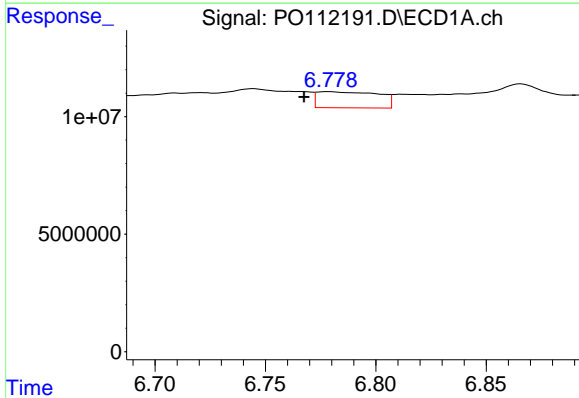
R.T.: 6.375 min  
 Delta R.T.: 0.026 min  
 Response: 125097  
 Conc: 0.26 ng/ml

Instrument :  
 ECD\_O  
 ClientSampleId :  
 TP-49



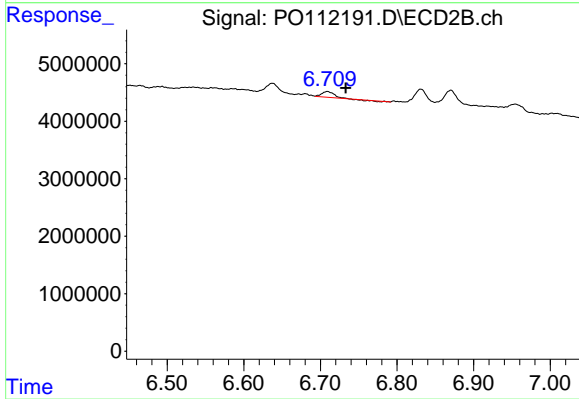
#29 AR-1254-4

R.T.: 6.283 min  
 Delta R.T.: -0.034 min  
 Response: 2566118  
 Conc: 9.84 ng/ml



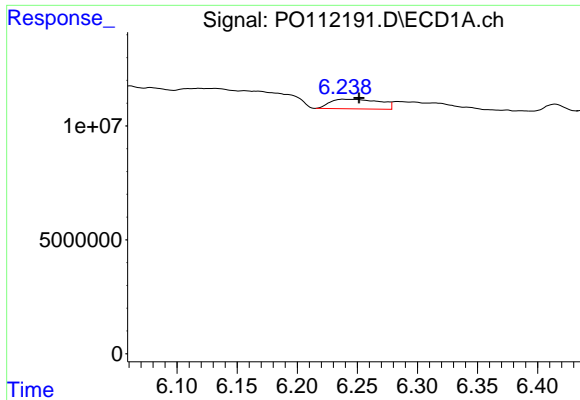
#30 AR-1254-5

R.T.: 6.779 min  
 Delta R.T.: 0.012 min  
 Response: 13195582  
 Conc: 17.05 ng/ml



#30 AR-1254-5

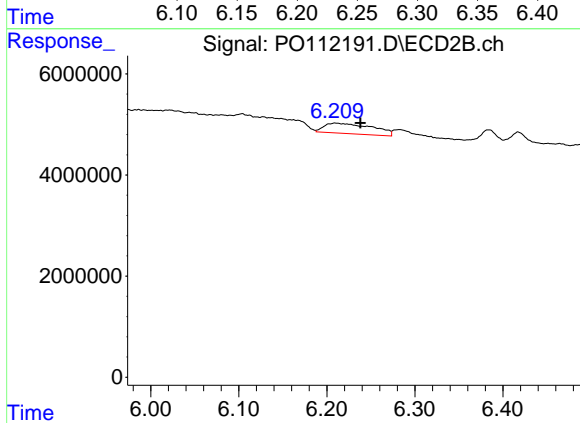
R.T.: 6.709 min  
 Delta R.T.: -0.024 min  
 Response: 944326  
 Conc: 2.65 ng/ml



#31 AR-1260-1

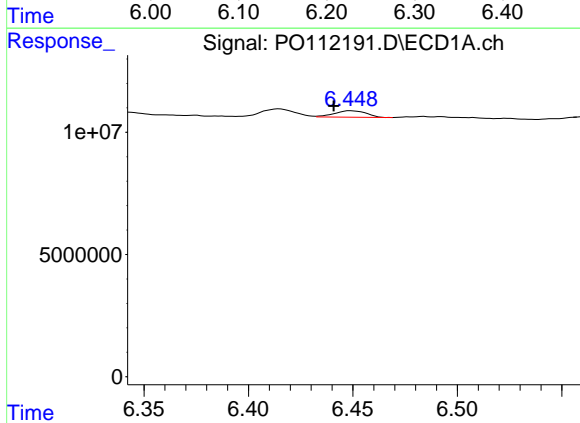
R.T.: 6.239 min  
 Delta R.T.: -0.013 min  
 Response: 12223264  
 Conc: 24.39 ng/ml

Instrument :  
 ECD\_O  
 ClientSampleId :  
 TP-49



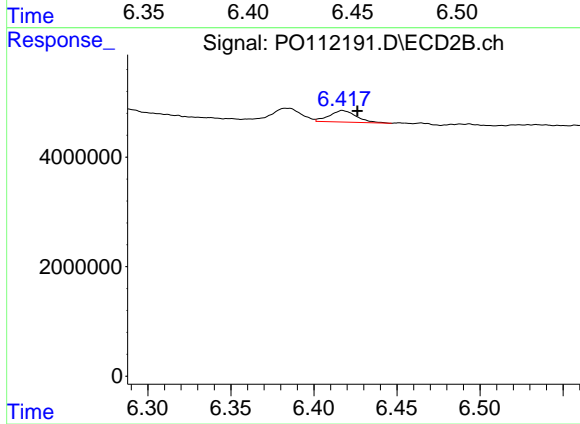
#31 AR-1260-1

R.T.: 6.210 min  
 Delta R.T.: -0.029 min  
 Response: 7799863  
 Conc: 27.80 ng/ml



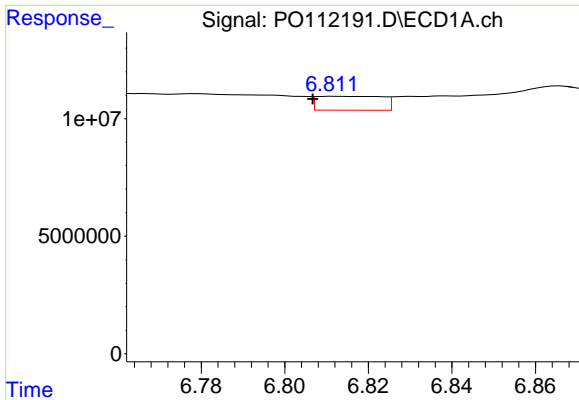
#32 AR-1260-2

R.T.: 6.449 min  
 Delta R.T.: 0.008 min  
 Response: 2810213  
 Conc: 3.81 ng/ml



#32 AR-1260-2

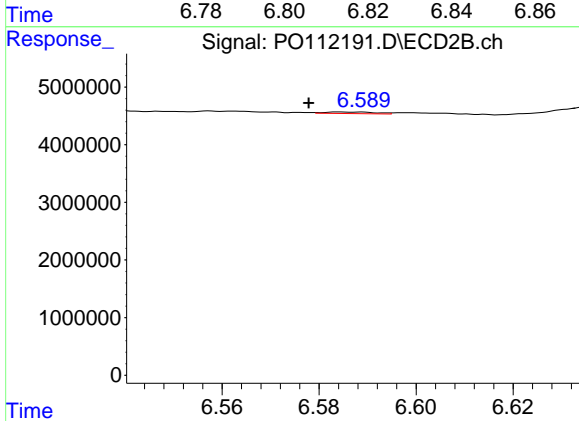
R.T.: 6.417 min  
 Delta R.T.: -0.009 min  
 Response: 2376456  
 Conc: 6.99 ng/ml



#33 AR-1260-3

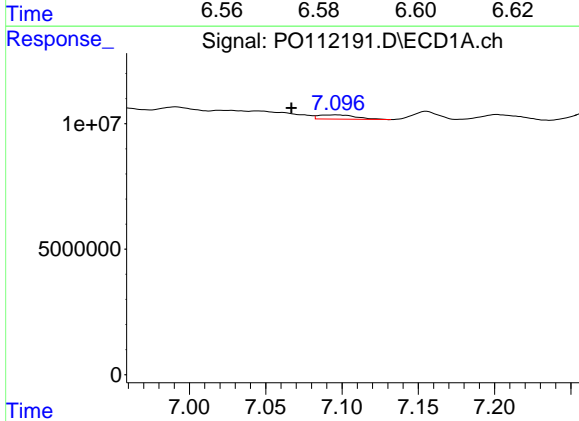
R.T.: 6.812 min  
 Delta R.T.: 0.005 min  
 Response: 6440836  
 Conc: 9.83 ng/ml

Instrument :  
 ECD\_O  
 ClientSampleId :  
 TP-49



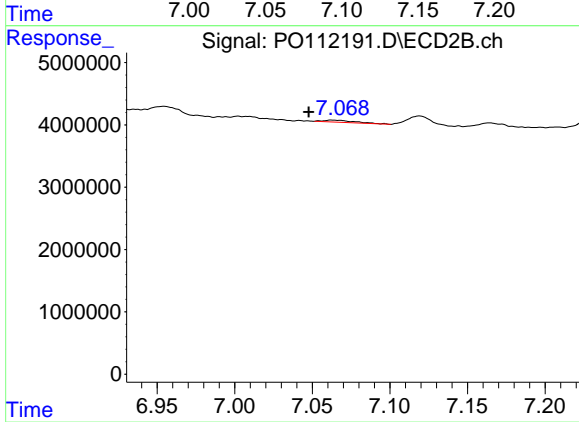
#33 AR-1260-3

R.T.: 6.585 min  
 Delta R.T.: 0.007 min  
 Response: 201037  
 Conc: 0.73 ng/ml



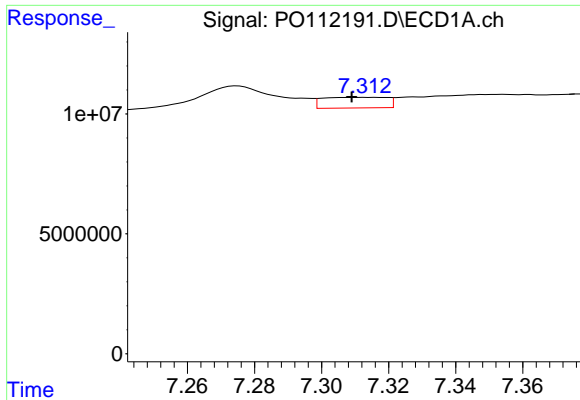
#34 AR-1260-4

R.T.: 7.097 min  
 Delta R.T.: 0.030 min  
 Response: 2848026  
 Conc: 6.54 ng/ml



#34 AR-1260-4

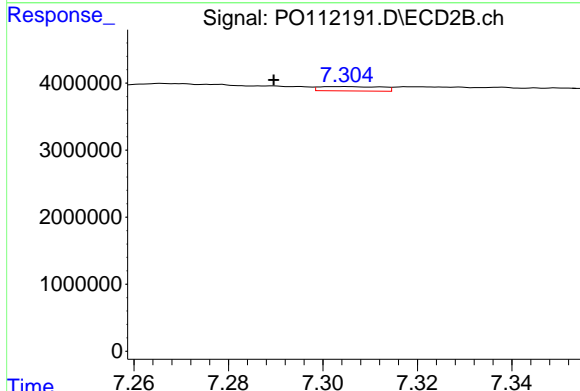
R.T.: 7.063 min  
 Delta R.T.: 0.015 min  
 Response: 446436  
 Conc: 2.23 ng/ml



#35 AR-1260-5

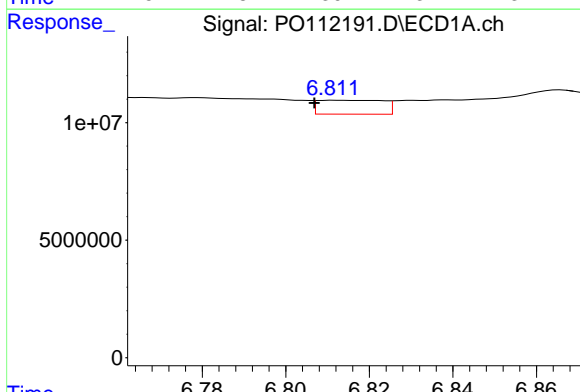
R.T.: 7.314 min  
 Delta R.T.: 0.005 min  
 Response: 5866821  
 Conc: 4.65 ng/ml

Instrument :  
 ECD\_O  
 ClientSampleId :  
 TP-49



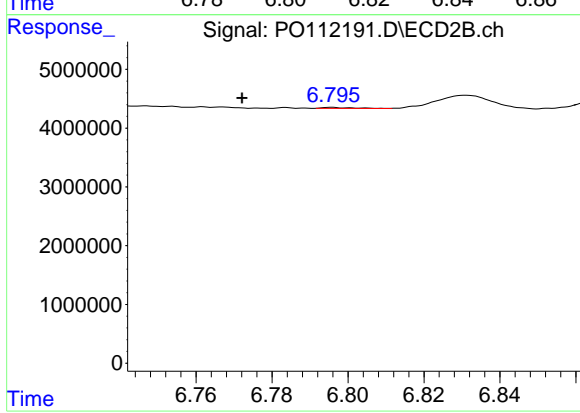
#35 AR-1260-5

R.T.: 7.304 min  
 Delta R.T.: 0.015 min  
 Response: 594803  
 Conc: 1.33 ng/ml



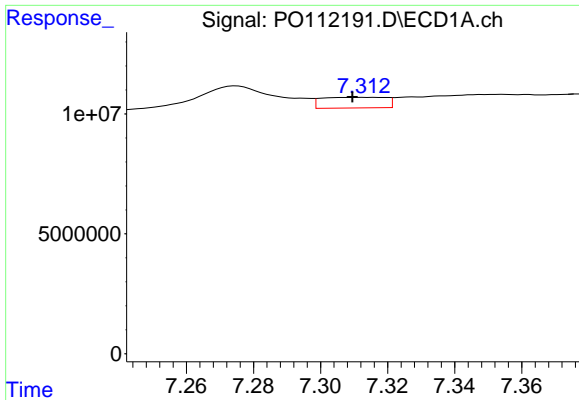
#36 AR-1262-1

R.T.: 6.812 min  
 Delta R.T.: 0.005 min  
 Response: 6440836  
 Conc: 6.30 ng/ml



#36 AR-1262-1

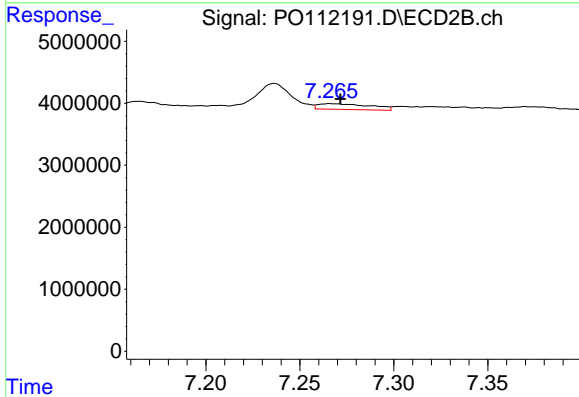
R.T.: 6.796 min  
 Delta R.T.: 0.024 min  
 Response: 96483  
 Conc: 0.24 ng/ml



#37 AR-1262-2

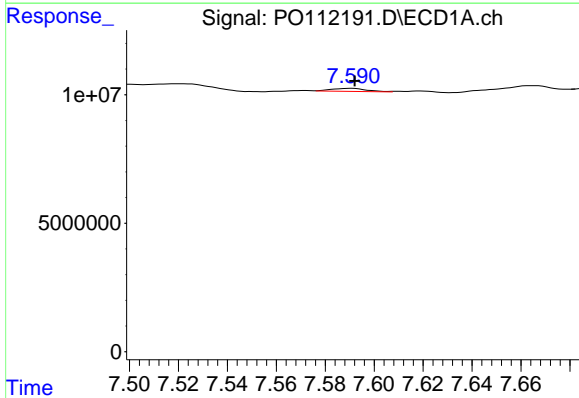
R.T.: 7.314 min  
 Delta R.T.: 0.005 min  
 Response: 5866821  
 Conc: 3.58 ng/ml

Instrument :  
 ECD\_O  
 ClientSampleId :  
 TP-49



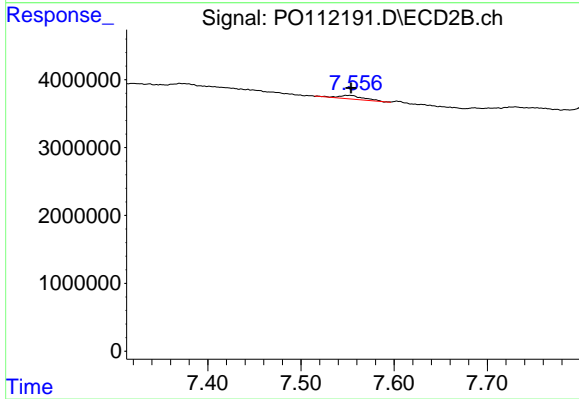
#37 AR-1262-2

R.T.: 7.266 min  
 Delta R.T.: -0.005 min  
 Response: 1753847  
 Conc: 3.42 ng/ml



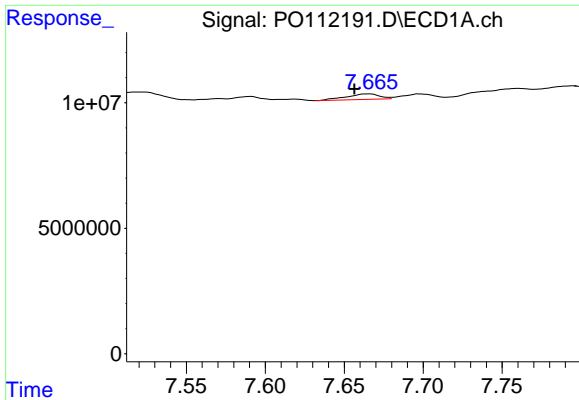
#38 AR-1262-3

R.T.: 7.590 min  
 Delta R.T.: -0.002 min  
 Response: 1181523  
 Conc: 1.84 ng/ml



#38 AR-1262-3

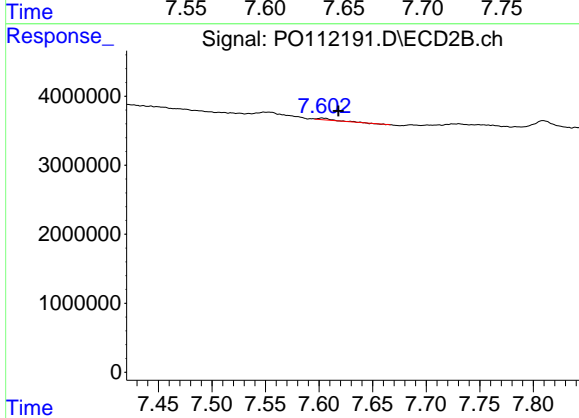
R.T.: 7.553 min  
 Delta R.T.: -0.001 min  
 Response: 1034017  
 Conc: 5.76 ng/ml



#39 AR-1262-4

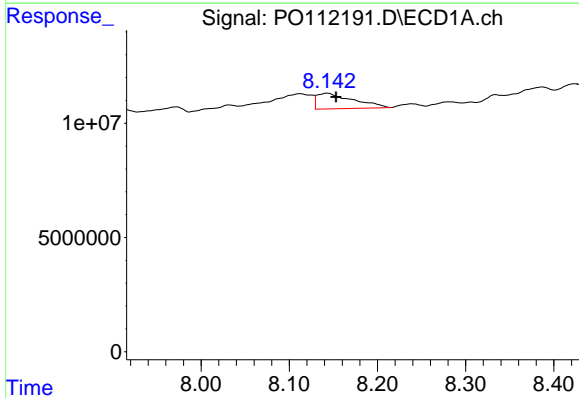
R.T.: 7.665 min  
 Delta R.T.: 0.009 min  
 Response: 3196403  
 Conc: 2.98 ng/ml

Instrument :  
 ECD\_O  
 ClientSampleId :  
 TP-49



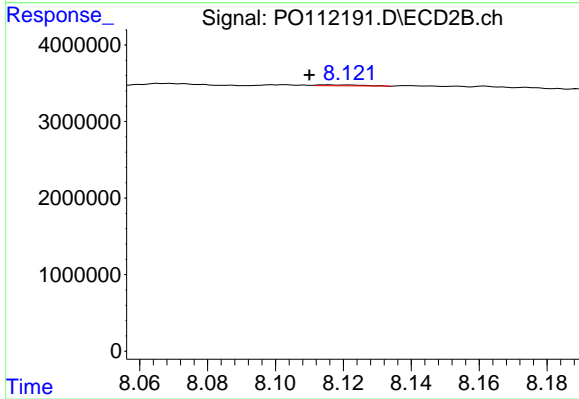
#39 AR-1262-4

R.T.: 7.603 min  
 Delta R.T.: -0.015 min  
 Response: 115791  
 Conc: 0.40 ng/ml



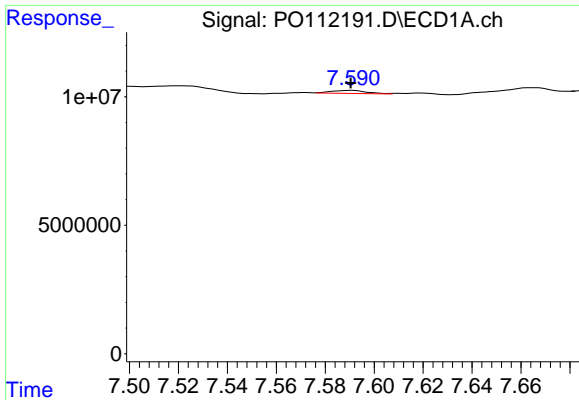
#40 AR-1262-5

R.T.: 8.143 min  
 Delta R.T.: -0.010 min  
 Response: 19394768  
 Conc: 43.28 ng/ml



#40 AR-1262-5

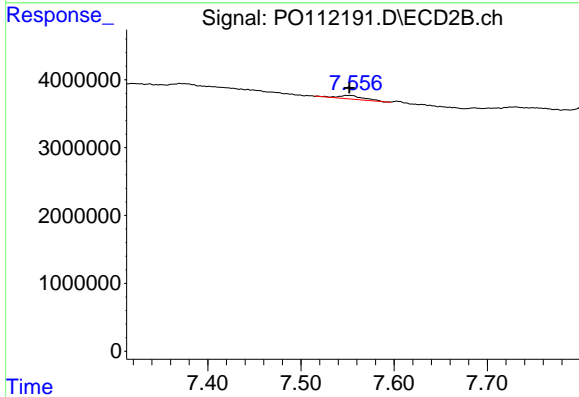
R.T.: 8.115 min  
 Delta R.T.: 0.005 min  
 Response: 114715  
 Conc: 1.08 ng/ml



#41 AR-1268-1

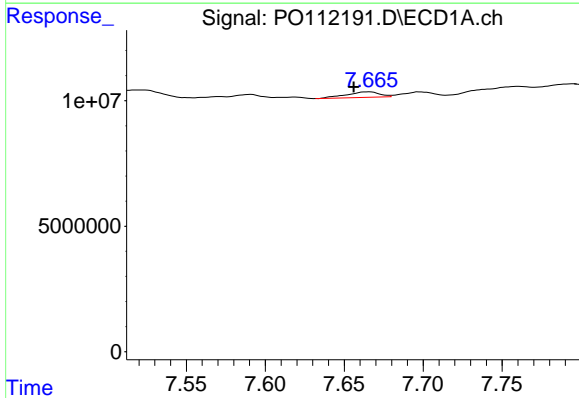
R.T.: 7.590 min  
 Delta R.T.: 0.000 min  
 Response: 1181523  
 Conc: 0.64 ng/ml

Instrument :  
 ECD\_O  
 ClientSampleId :  
 TP-49



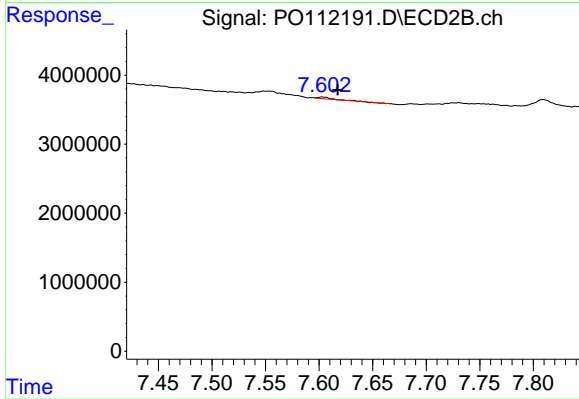
#41 AR-1268-1

R.T.: 7.553 min  
 Delta R.T.: 0.000 min  
 Response: 1034017  
 Conc: 2.10 ng/ml



#42 AR-1268-2

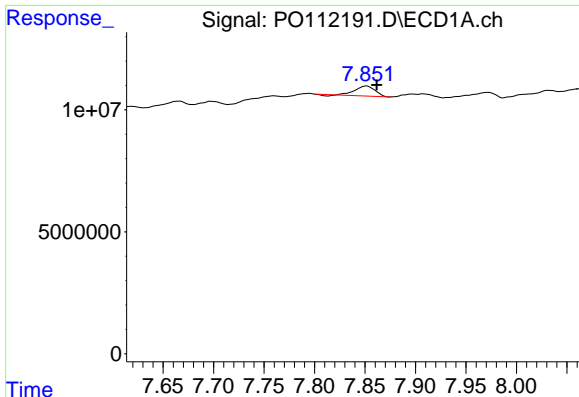
R.T.: 7.665 min  
 Delta R.T.: 0.009 min  
 Response: 3196403  
 Conc: 2.05 ng/ml



#42 AR-1268-2

R.T.: 7.603 min  
 Delta R.T.: -0.014 min  
 Response: 115791  
 Conc: 0.28 ng/ml

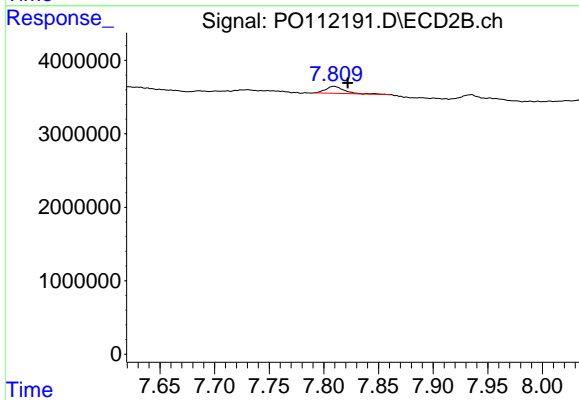




#43 AR-1268-3

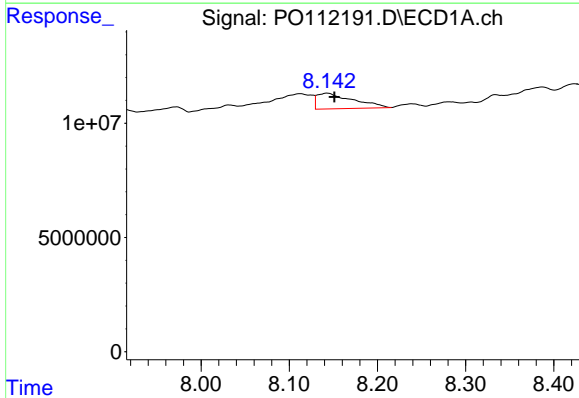
R.T.: 7.851 min  
 Delta R.T.: -0.010 min  
 Response: 5369258  
 Conc: 4.13 ng/ml

Instrument :  
 ECD\_O  
 ClientSampleId :  
 TP-49



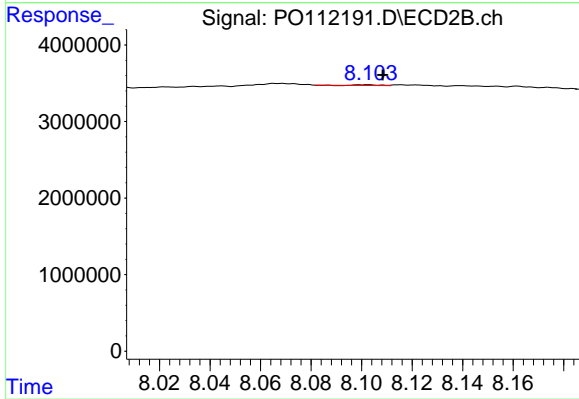
#43 AR-1268-3

R.T.: 7.809 min  
 Delta R.T.: -0.013 min  
 Response: 1106222  
 Conc: 3.50 ng/ml



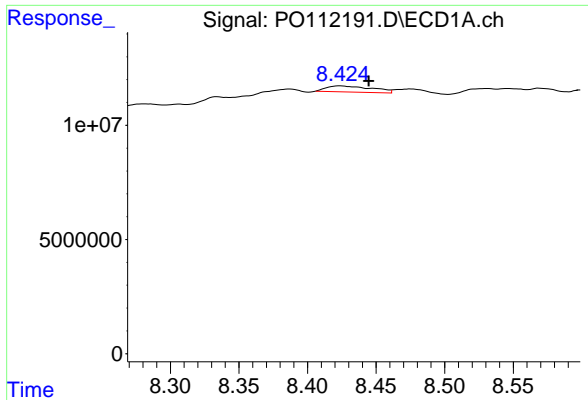
#44 AR-1268-4

R.T.: 8.143 min  
 Delta R.T.: -0.008 min  
 Response: 19394768  
 Conc: 40.37 ng/ml



#44 AR-1268-4

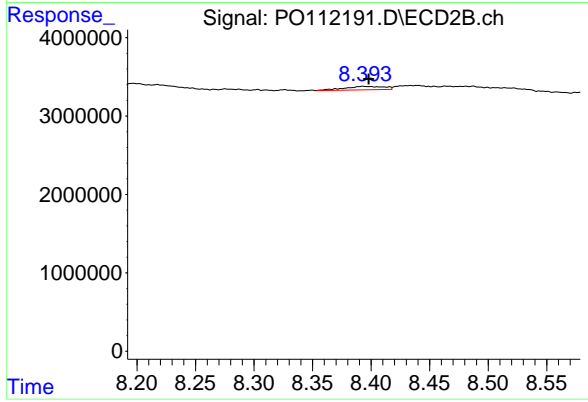
R.T.: 8.102 min  
 Delta R.T.: -0.006 min  
 Response: 58780  
 Conc: 0.53 ng/ml



#45 AR-1268-5

R.T.: 8.424 min  
 Delta R.T.: -0.021 min  
 Response: 6148435  
 Conc: 1.88 ng/ml

Instrument :  
 ECD\_O  
 ClientSampleId :  
 TP-49



#45 AR-1268-5

R.T.: 8.393 min  
 Delta R.T.: -0.005 min  
 Response: 1061152  
 Conc: 1.46 ng/ml