

Data Path : Z:\pestpcbsrv\HPCHEM1\ECD_0\Data\P0071025\
 Data File : P0112192.D
 Signal(s) : Signal #1: ECD1A.ch Signal #2: ECD2B.ch
 Acq On : 10 Jul 2025 15:15
 Operator : YP/AJ
 Sample : Q2543-03
 Misc :
 ALS Vial : 13 Sample Multiplier: 1

Instrument :
 ECD_0
 ClientSampleId :
 TP-23

Integration File signal 1: autoint1.e
 Integration File signal 2: autoint2.e
 Quant Time: Jul 10 15:45:51 2025
 Quant Method : Z:\pestpcbsrv\HPCHEM1\ECD_0\methods\P0070825.M
 Quant Title : GC EXTRACTABLES
 QLast Update : Wed Jul 09 10:50:50 2025
 Response via : Initial Calibration
 Integrator: ChemStation

Volume Inj. : 2 µl
 Signal #1 Phase : ZB-MR2 Signal #2 Phase: ZB-MR2
 Signal #1 Info : 30Mx0.32mmx 0.50µ Signal #2 Info : 30M x 0.32mm x 0.25µm

Compound	RT#1	RT#2	Resp#1	Resp#2	ng/ml	ng/ml
----------	------	------	--------	--------	-------	-------

System Monitoring Compounds

1) SA Tetrachlo...	3.670	3.665	232.6E6	142.3E6	23.506	22.332
2) SA Decachlor...	8.700	8.648	92173896	27954582	13.482	16.220

Target Compounds

3) L1 AR-1016-1	4.753	4.759	161223	238568	0.474	1.071 #
4) L1 AR-1016-2	4.772	4.782	1237792	585612	2.489	1.779 #
5) L1 AR-1016-3	4.843	4.965	1111856	62156	3.435	0.366 #
6) L1 AR-1016-4	4.958	4.995	1252202	346648	4.876	2.526 #
7) L1 AR-1016-5	5.196	5.207	5815349	1017817	21.250	5.902 #
8) L2 AR-1221-1	3.903	3.872	2176004	51607	18.660	0.627 #
9) L2 AR-1221-2	3.972	3.964	3679973	2877129	46.676	48.474
10) L2 AR-1221-3	4.078	4.038	1821677	127978	6.757	0.678 #
11) L3 AR-1232-1	4.078	4.038	1821677	127978	8.486	0.853 #
12) L3 AR-1232-2	4.529	4.759	1518516	238568	13.363	1.558 #
13) L3 AR-1232-3	4.772	4.934	1237792	203758	5.405	2.699 #
14) L3 AR-1232-4	4.958	5.024	1252202	186922	10.956	2.833 #
15) L3 AR-1232-5	5.002	5.181	2475539	2165572	33.727	29.162
16) L4 AR-1242-1	4.753	4.743	161223	333801	0.557	1.722 #
17) L4 AR-1242-2	4.772	4.759	1237792	238568	2.906	0.842 #
18) L4 AR-1242-3	4.843	4.934	1111856	203758	4.063	1.399 #
19) L4 AR-1242-4	4.958	5.024	1252202	186922	5.557	1.318 #
20) L4 AR-1242-5	5.573	5.538	67740661	2103495	320.028	11.575 #
21) L5 AR-1248-1	4.753	4.743	161223	333801	0.711	2.162 #
22) L5 AR-1248-2	5.002	4.977	2475539	43665	8.029	0.212 #
23) L5 AR-1248-3	5.231	5.024	2749689	186922	6.751	0.870 #
24) L5 AR-1248-4	5.573	5.181	67740661	2165572	117.371	8.370 #
25) L5 AR-1248-5	5.573f	5.583	67740661	3747106	173.558	14.956 #
26) L6 AR-1254-1	5.573	5.538	67740661	2103495	110.127	5.519 #
27) L6 AR-1254-2	5.709	5.688	25056503	1819259	46.775	5.483 #
28) L6 AR-1254-3	0.000	6.091	0	1733594	N.D.	3.596 #
29) L6 AR-1254-4	6.370	6.331	358042	427886	0.744	1.641 #
30) L6 AR-1254-5	6.779	6.723	618805	109004	0.800	0.306 #
31) L7 AR-1260-1	6.231	6.235	1680587	650296	3.353	2.318 #
32) L7 AR-1260-2	6.413	6.418	8586096	655940	11.632	1.929 #
33) L7 AR-1260-3	6.791	6.579	1673433	159540	2.553	0.579 #
34) L7 AR-1260-4	7.070	7.038	5283008	431801	12.138	2.152 #
35) L7 AR-1260-5	7.328	7.288	10322283	205096	8.176	0.458 #
36) L8 AR-1262-1	6.791	6.766	1673433	41949	1.638	0.103 #
37) L8 AR-1262-2	7.328	7.265	10322283	644878	6.296	1.258 #
38) L8 AR-1262-3	7.582	7.556	818848	126240	1.276	0.703 #
39) L8 AR-1262-4	7.645	7.620	1516290	82408	1.415	0.283 #
40) L8 AR-1262-5	8.192f	8.106	42940539	31907	95.819	0.302 #
41) L9 AR-1268-1	7.582	7.556	818848	126240	0.446	0.257 #

Data Path : Z:\pestpcbsrv\HPCHEM1\ECD_0\Data\P0071025\
 Data File : P0112192.D
 Signal(s) : Signal #1: ECD1A.ch Signal #2: ECD2B.ch
 Acq On : 10 Jul 2025 15:15
 Operator : YP/AJ
 Sample : Q2543-03
 Misc :
 ALS Vial : 13 Sample Multiplier: 1

Instrument :
 ECD_0
 ClientSampleId :
 TP-23

Integration File signal 1: autoint1.e
 Integration File signal 2: autoint2.e
 Quant Time: Jul 10 15:45:51 2025
 Quant Method : Z:\pestpcbsrv\HPCHEM1\ECD_0\methods\P0070825.M
 Quant Title : GC EXTRACTABLES
 QLast Update : Wed Jul 09 10:50:50 2025
 Response via : Initial Calibration
 Integrator: ChemStation

Volume Inj. : 2 µl
 Signal #1 Phase : ZB-MR1 Signal #2 Phase: ZB-MR2
 Signal #1 Info : 30Mx0.32mmx 0.50µ Signal #2 Info : 30M x 0.32mm x 0.25µm

	Compound	RT#1	RT#2	Resp#1	Resp#2	ng/ml	ng/ml
42)	L9 AR-1268-2	7.645	7.620	1516290	82408	0.973	0.198 #
43)	L9 AR-1268-3	7.866	7.827	562930	98421	0.433	0.311 #
44)	L9 AR-1268-4	8.192f	8.106	42940539	31907	89.383	0.286 #
45)	L9 AR-1268-5	8.437	8.400	910541	111628	0.279	0.154 #

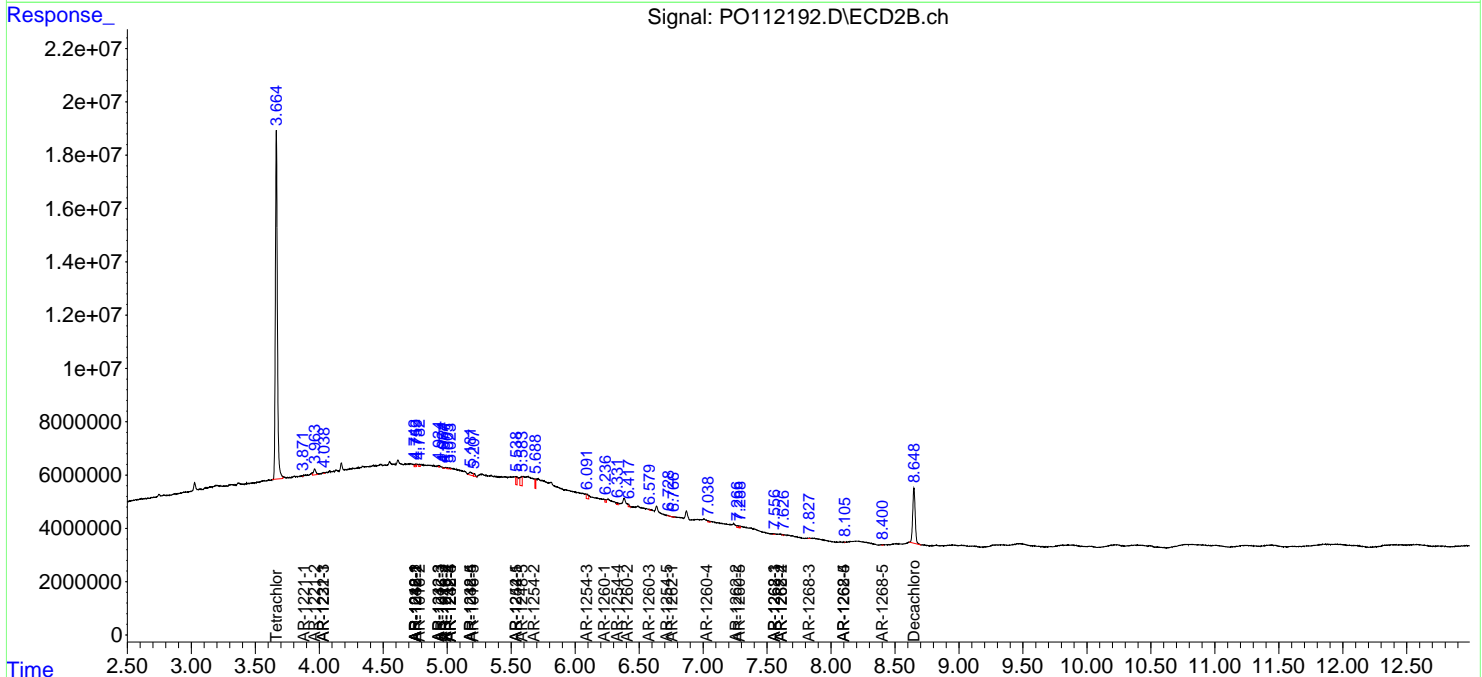
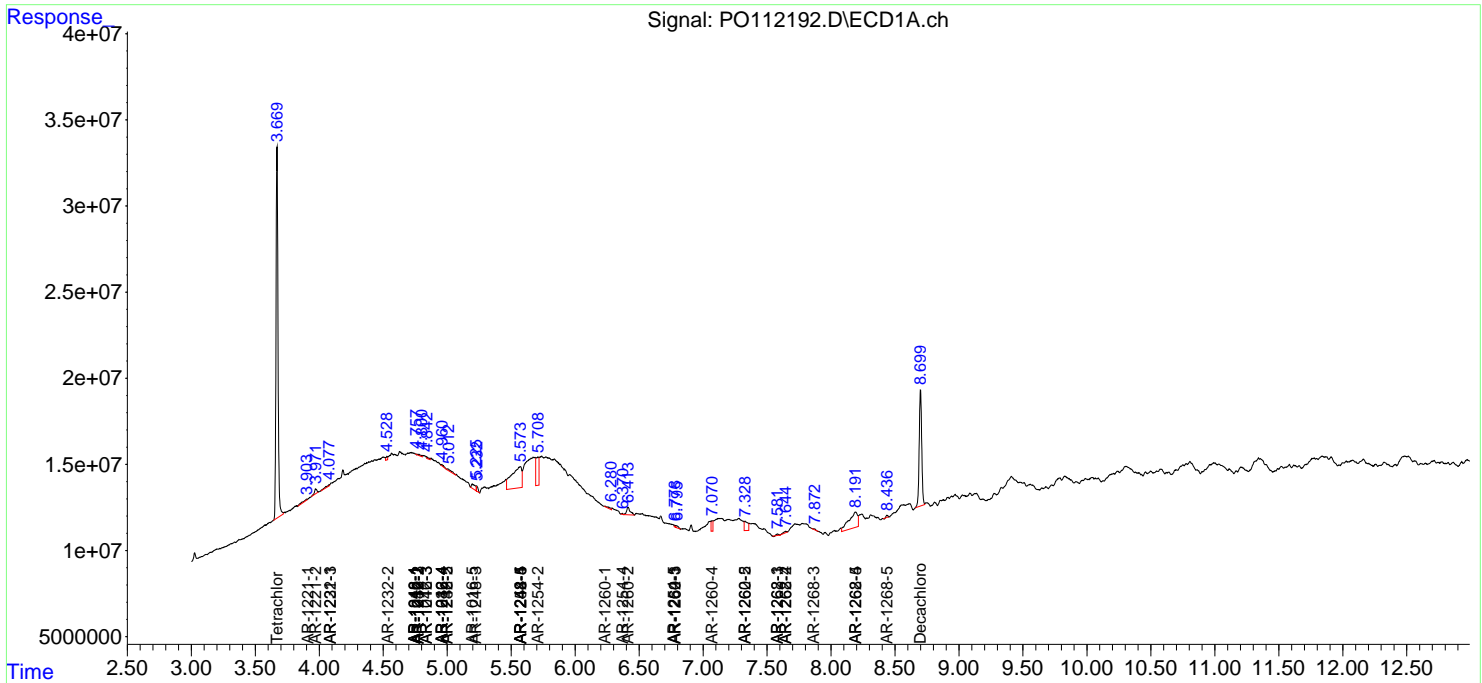
(f)=RT Delta > 1/2 Window (#)=Amounts differ by > 25% (m)=manual int.

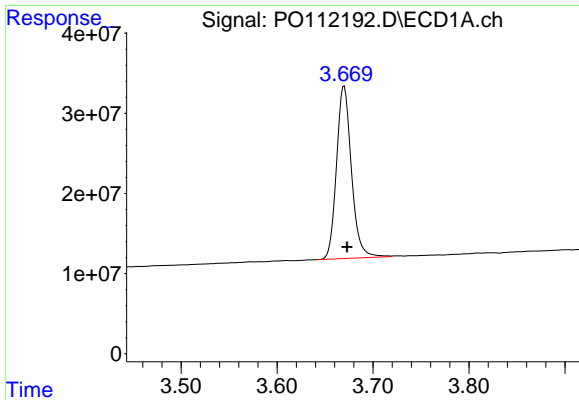
Data Path : Z:\pestpcbsrv\HPCHEM1\ECD_O\Data\PO071025\
 Data File : PO112192.D
 Signal(s) : Signal #1: ECD1A.ch Signal #2: ECD2B.ch
 Acq On : 10 Jul 2025 15:15
 Operator : YP/AJ
 Sample : Q2543-03
 Misc :
 ALS Vial : 13 Sample Multiplier: 1

Instrument :
 ECD_O
 ClientSampleId :
 TP-23

Integration File signal 1: autoint1.e
 Integration File signal 2: autoint2.e
 Quant Time: Jul 10 15:45:51 2025
 Quant Method : Z:\pestpcbsrv\HPCHEM1\ECD_O\methods\PO070825.M
 Quant Title : GC EXTRACTABLES
 QLast Update : Wed Jul 09 10:50:50 2025
 Response via : Initial Calibration
 Integrator: ChemStation

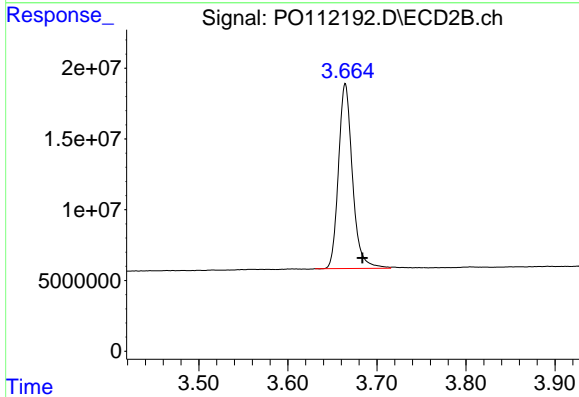
Volume Inj. : 2 µl
 Signal #1 Phase : ZB-MR1 Signal #2 Phase: ZB-MR2
 Signal #1 Info : 30Mx0.32mmx 0.50µ Signal #2 Info : 30M x 0.32mm x 0.25µm



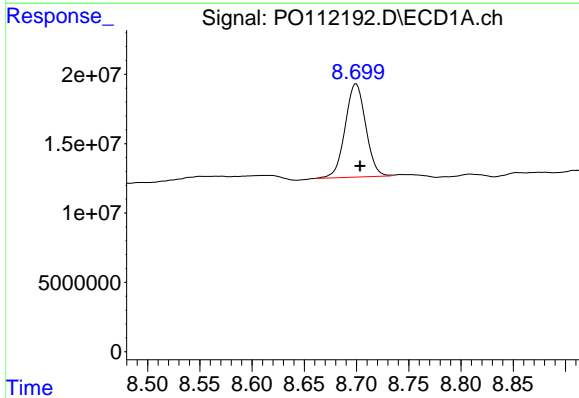


#1 Tetrachloro-m-xylene
 R.T.: 3.670 min
 Delta R.T.: -0.003 min
 Response: 232580050
 Conc: 23.51 ng/ml

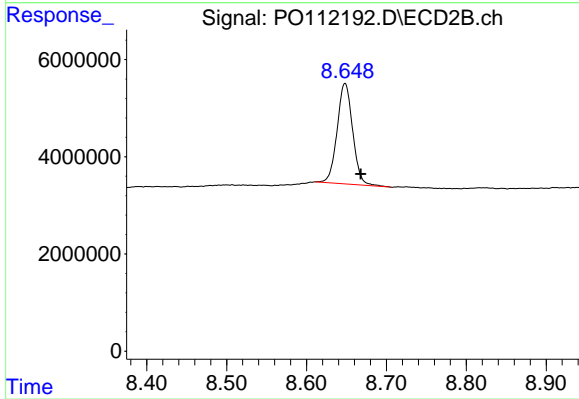
Instrument :
 ECD_O
 ClientSampleId :
 TP-23



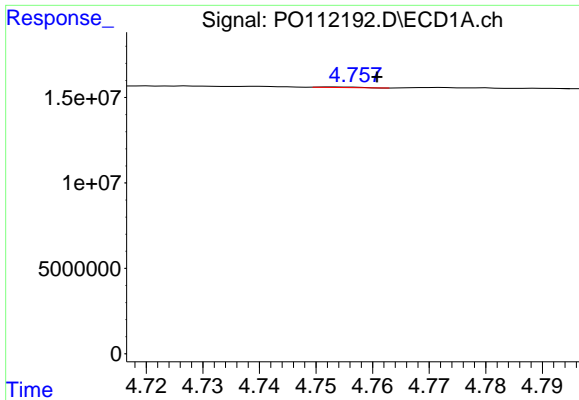
#1 Tetrachloro-m-xylene
 R.T.: 3.665 min
 Delta R.T.: -0.019 min
 Response: 142278876
 Conc: 22.33 ng/ml



#2 Decachlorobiphenyl
 R.T.: 8.700 min
 Delta R.T.: -0.004 min
 Response: 92173896
 Conc: 13.48 ng/ml



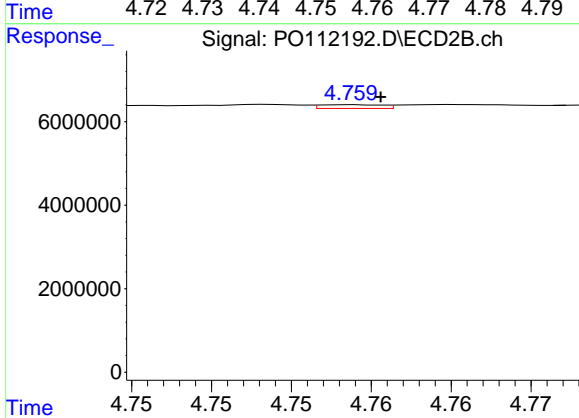
#2 Decachlorobiphenyl
 R.T.: 8.648 min
 Delta R.T.: -0.020 min
 Response: 27954582
 Conc: 16.22 ng/ml



#3 AR-1016-1

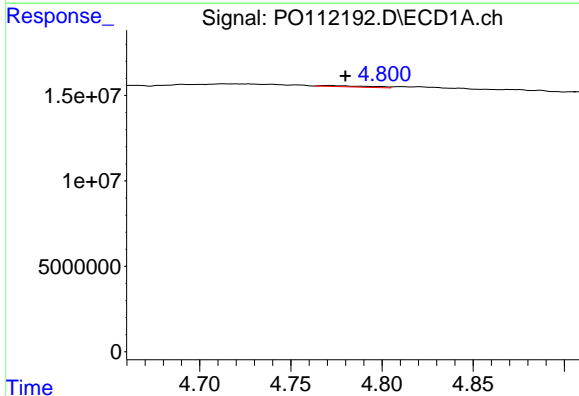
R.T.: 4.753 min
 Delta R.T.: -0.007 min
 Response: 161223
 Conc: 0.47 ng/ml

Instrument :
 ECD_O
 ClientSampleId :
 TP-23



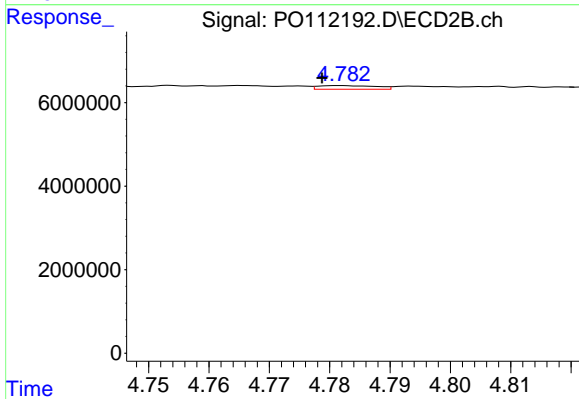
#3 AR-1016-1

R.T.: 4.759 min
 Delta R.T.: -0.002 min
 Response: 238568
 Conc: 1.07 ng/ml



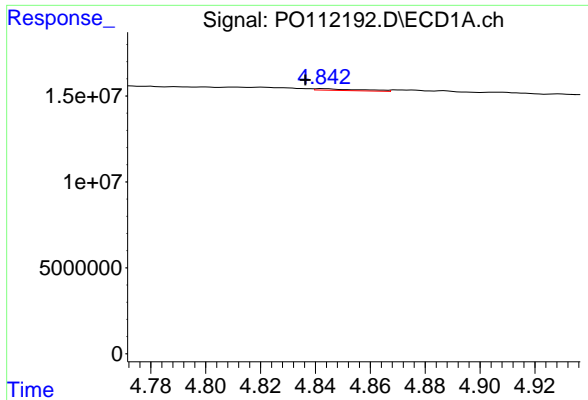
#4 AR-1016-2

R.T.: 4.772 min
 Delta R.T.: -0.008 min
 Response: 1237792
 Conc: 2.49 ng/ml



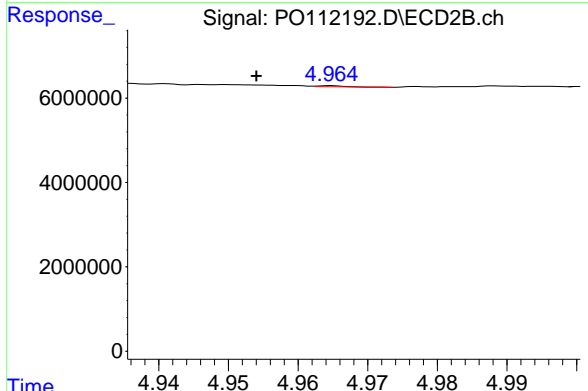
#4 AR-1016-2

R.T.: 4.782 min
 Delta R.T.: 0.003 min
 Response: 585612
 Conc: 1.78 ng/ml

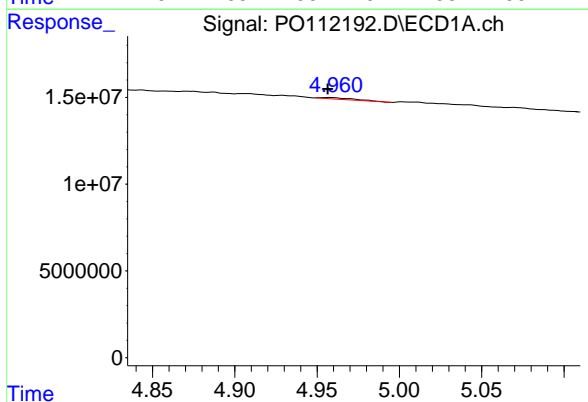


#5 AR-1016-3
 R.T.: 4.843 min
 Delta R.T.: 0.007 min
 Response: 1111856
 Conc: 3.43 ng/ml

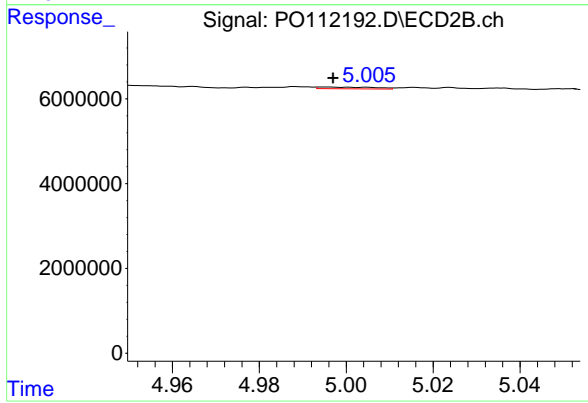
Instrument :
 ECD_O
 ClientSampleId :
 TP-23



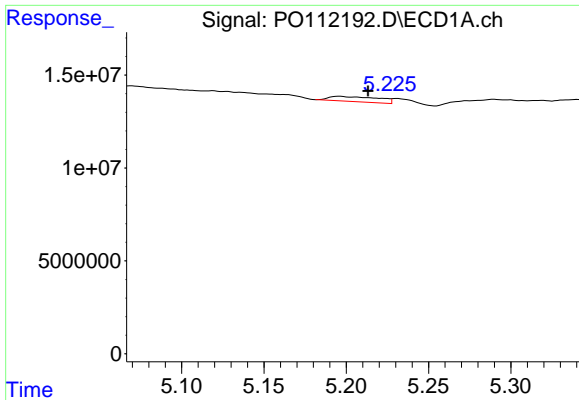
#5 AR-1016-3
 R.T.: 4.965 min
 Delta R.T.: 0.011 min
 Response: 62156
 Conc: 0.37 ng/ml



#6 AR-1016-4
 R.T.: 4.958 min
 Delta R.T.: 0.002 min
 Response: 1252202
 Conc: 4.88 ng/ml



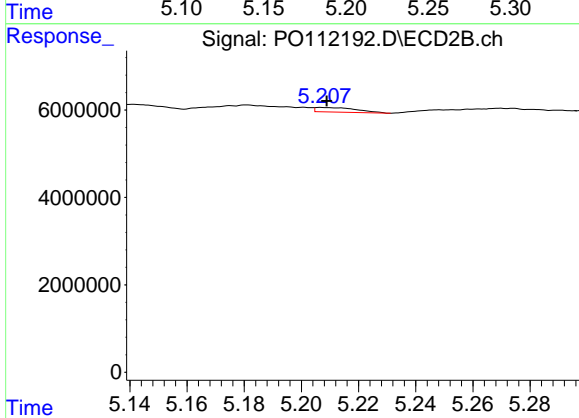
#6 AR-1016-4
 R.T.: 4.995 min
 Delta R.T.: -0.002 min
 Response: 346648
 Conc: 2.53 ng/ml



#7 AR-1016-5

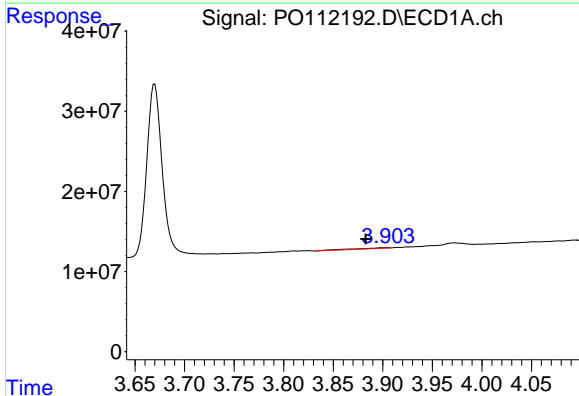
R.T.: 5.196 min
 Delta R.T.: -0.017 min
 Response: 5815349
 Conc: 21.25 ng/ml

Instrument :
 ECD_O
 ClientSampleId :
 TP-23



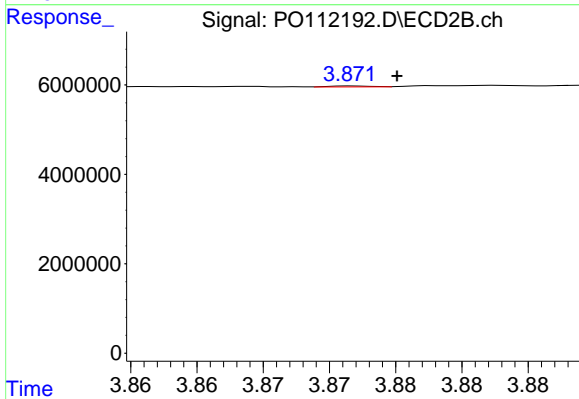
#7 AR-1016-5

R.T.: 5.207 min
 Delta R.T.: -0.002 min
 Response: 1017817
 Conc: 5.90 ng/ml



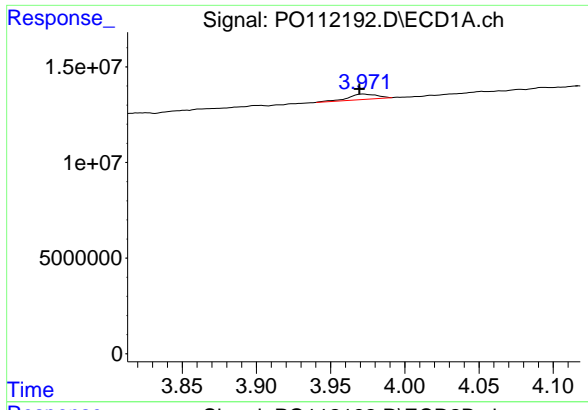
#8 AR-1221-1

R.T.: 3.903 min
 Delta R.T.: 0.020 min
 Response: 2176004
 Conc: 18.66 ng/ml



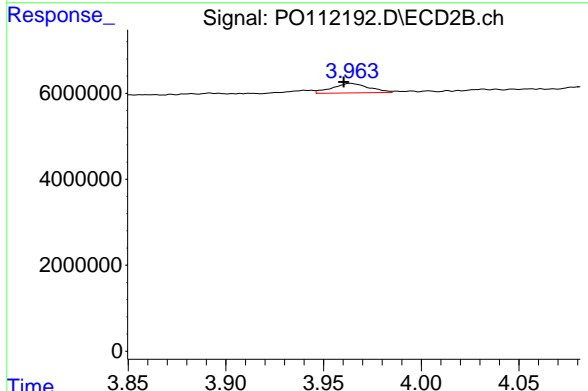
#8 AR-1221-1

R.T.: 3.872 min
 Delta R.T.: -0.003 min
 Response: 51607
 Conc: 0.63 ng/ml

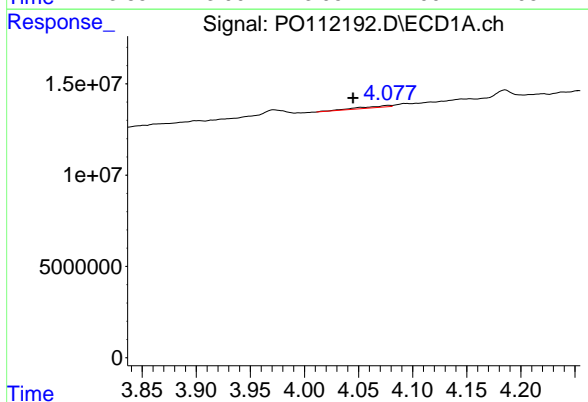


#9 AR-1221-2
 R.T.: 3.972 min
 Delta R.T.: 0.003 min
 Response: 3679973
 Conc: 46.68 ng/ml

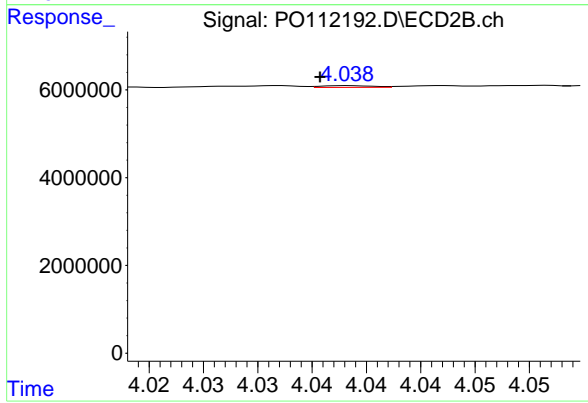
Instrument :
 ECD_O
 ClientSampleId :
 TP-23



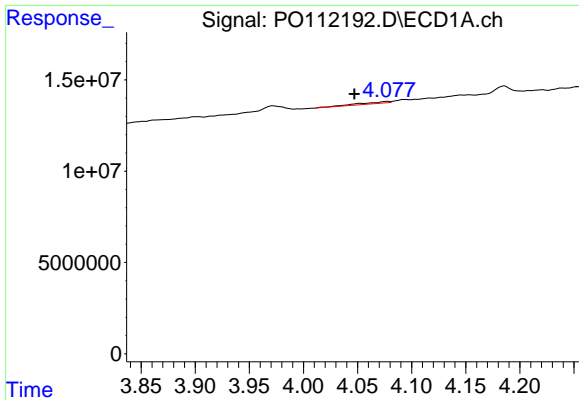
#9 AR-1221-2
 R.T.: 3.964 min
 Delta R.T.: 0.004 min
 Response: 2877129
 Conc: 48.47 ng/ml



#10 AR-1221-3
 R.T.: 4.078 min
 Delta R.T.: 0.033 min
 Response: 1821677
 Conc: 6.76 ng/ml



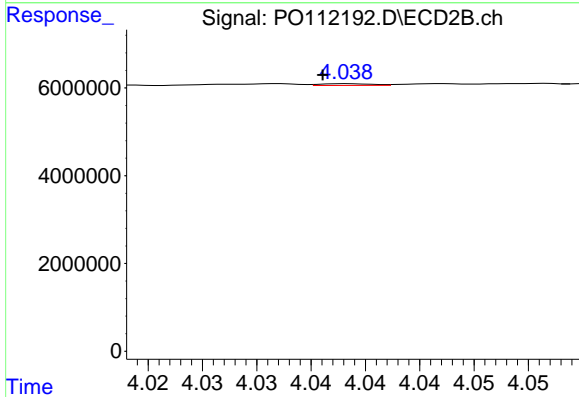
#10 AR-1221-3
 R.T.: 4.038 min
 Delta R.T.: 0.003 min
 Response: 127978
 Conc: 0.68 ng/ml



#11 AR-1232-1

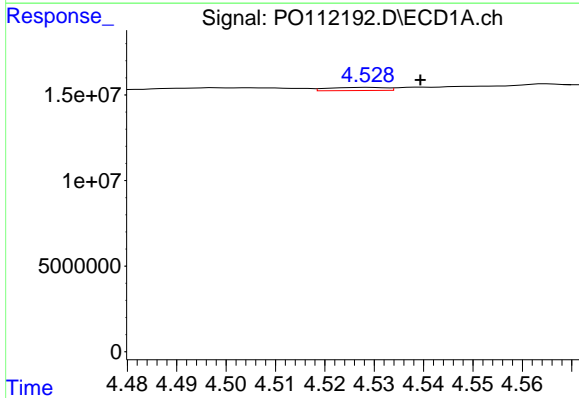
R.T.: 4.078 min
 Delta R.T.: 0.031 min
 Response: 1821677
 Conc: 8.49 ng/ml

Instrument :
 ECD_O
 ClientSampleId :
 TP-23



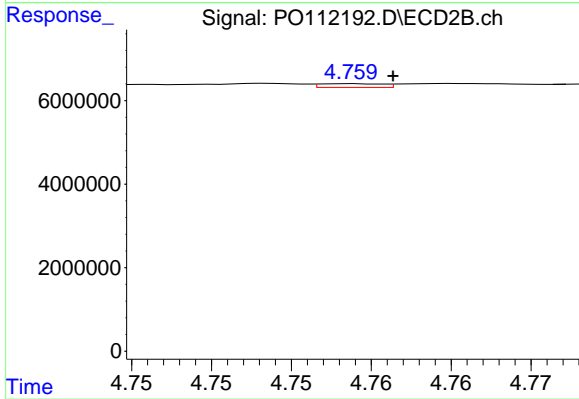
#11 AR-1232-1

R.T.: 4.038 min
 Delta R.T.: 0.002 min
 Response: 127978
 Conc: 0.85 ng/ml



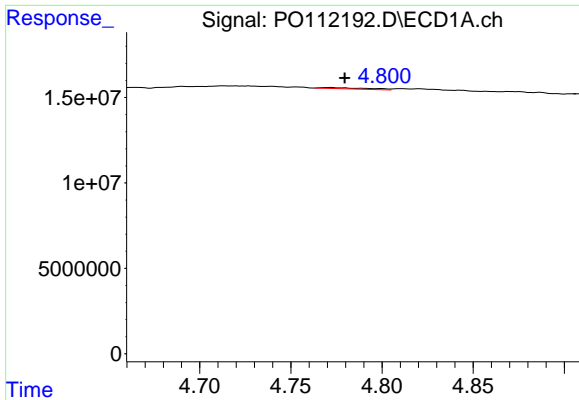
#12 AR-1232-2

R.T.: 4.529 min
 Delta R.T.: -0.011 min
 Response: 1518516
 Conc: 13.36 ng/ml



#12 AR-1232-2

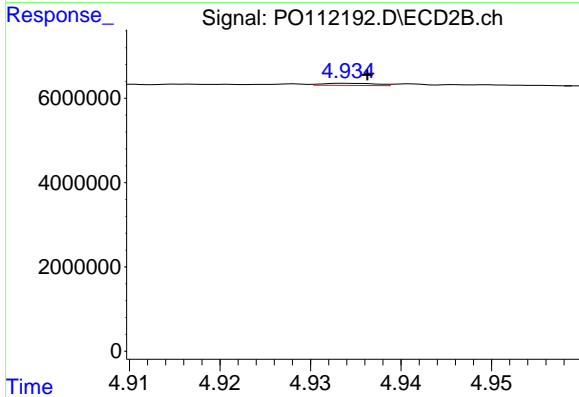
R.T.: 4.759 min
 Delta R.T.: -0.003 min
 Response: 238568
 Conc: 1.56 ng/ml



#13 AR-1232-3

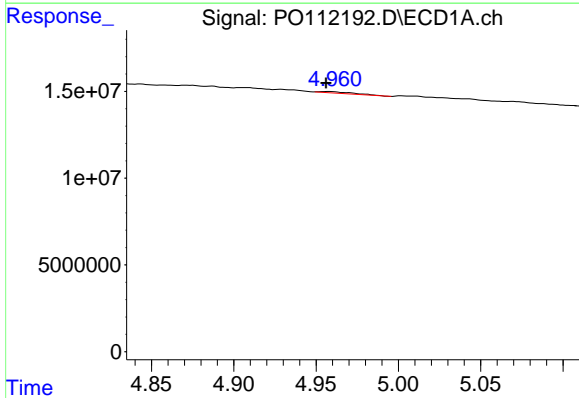
R.T.: 4.772 min
 Delta R.T.: -0.008 min
 Response: 1237792
 Conc: 5.40 ng/ml

Instrument :
 ECD_O
 ClientSampleId :
 TP-23



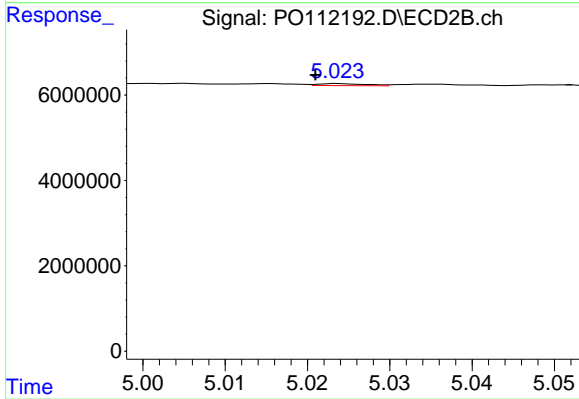
#13 AR-1232-3

R.T.: 4.934 min
 Delta R.T.: -0.002 min
 Response: 203758
 Conc: 2.70 ng/ml



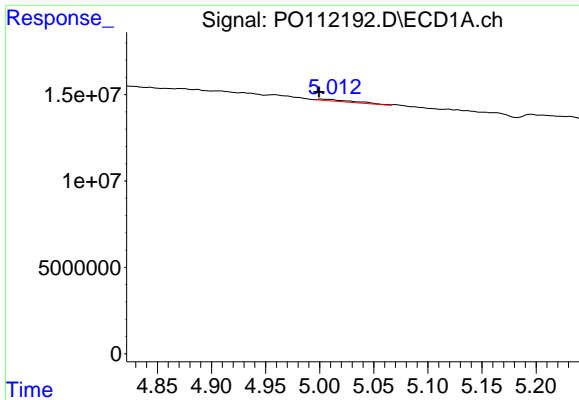
#14 AR-1232-4

R.T.: 4.958 min
 Delta R.T.: 0.002 min
 Response: 1252202
 Conc: 10.96 ng/ml



#14 AR-1232-4

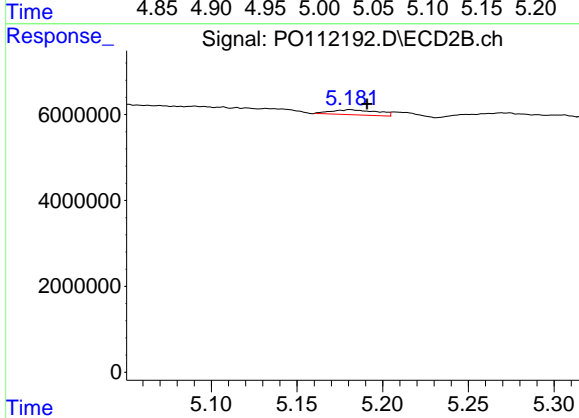
R.T.: 5.024 min
 Delta R.T.: 0.003 min
 Response: 186922
 Conc: 2.83 ng/ml



#15 AR-1232-5

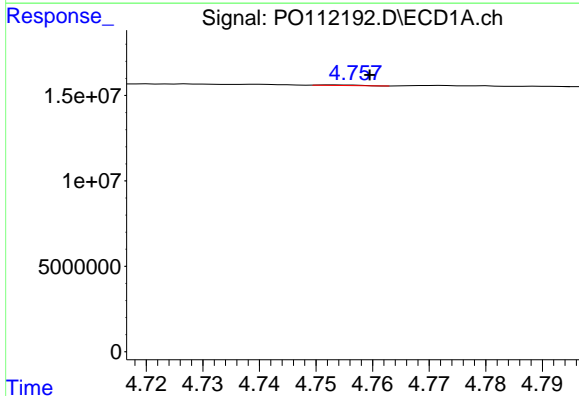
R.T.: 5.002 min
 Delta R.T.: 0.002 min
 Response: 2475539
 Conc: 33.73 ng/ml

Instrument :
 ECD_O
 ClientSampleId :
 TP-23



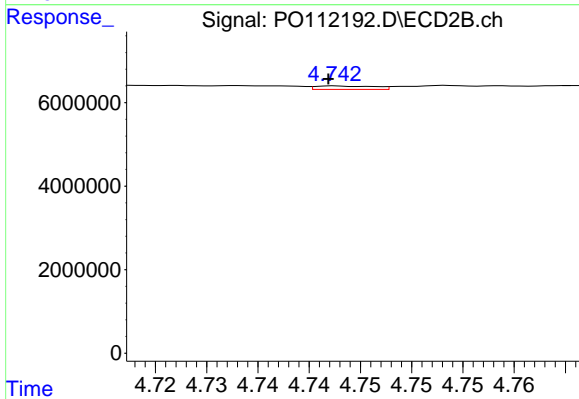
#15 AR-1232-5

R.T.: 5.181 min
 Delta R.T.: -0.010 min
 Response: 2165572
 Conc: 29.16 ng/ml



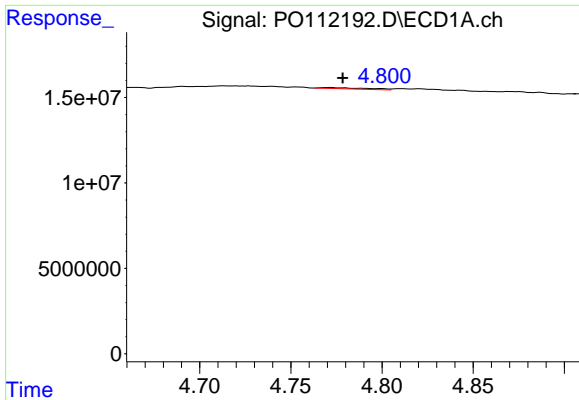
#16 AR-1242-1

R.T.: 4.753 min
 Delta R.T.: -0.006 min
 Response: 161223
 Conc: 0.56 ng/ml



#16 AR-1242-1

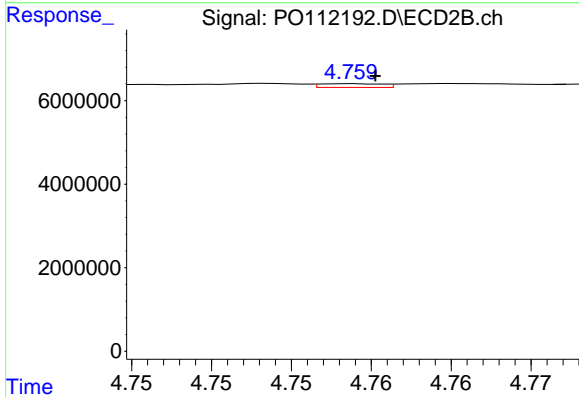
R.T.: 4.743 min
 Delta R.T.: 0.000 min
 Response: 333801
 Conc: 1.72 ng/ml



#17 AR-1242-2

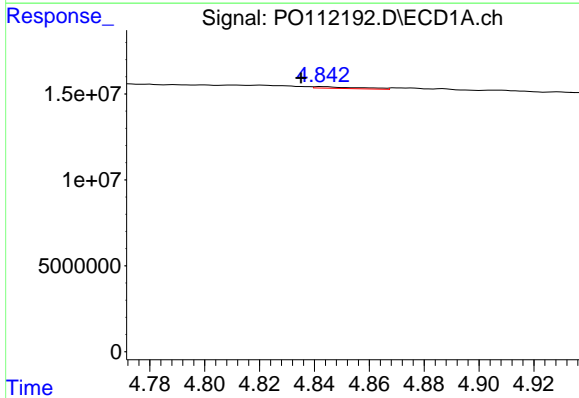
R.T.: 4.772 min
 Delta R.T.: -0.007 min
 Response: 1237792
 Conc: 2.91 ng/ml

Instrument :
 ECD_O
 ClientSampleId :
 TP-23



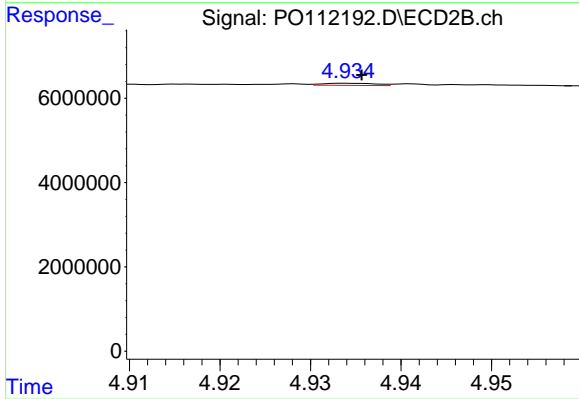
#17 AR-1242-2

R.T.: 4.759 min
 Delta R.T.: -0.001 min
 Response: 238568
 Conc: 0.84 ng/ml



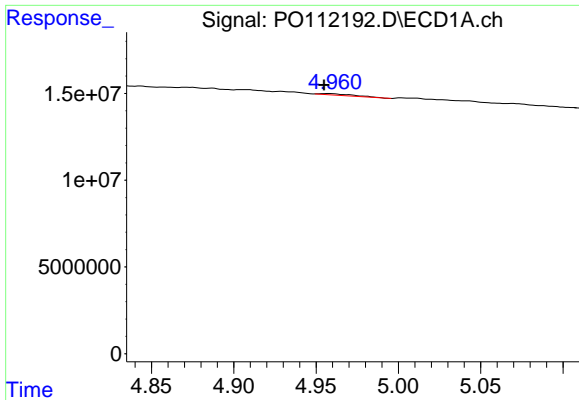
#18 AR-1242-3

R.T.: 4.843 min
 Delta R.T.: 0.008 min
 Response: 1111856
 Conc: 4.06 ng/ml



#18 AR-1242-3

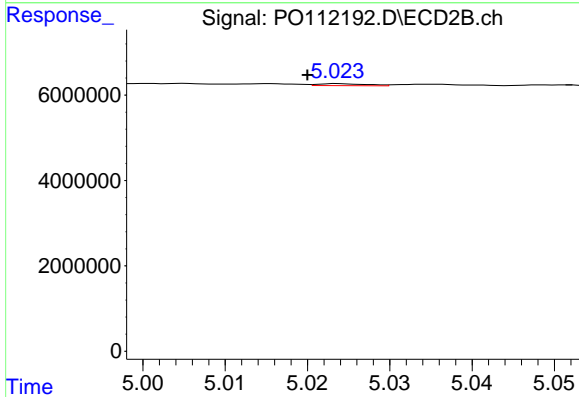
R.T.: 4.934 min
 Delta R.T.: -0.001 min
 Response: 203758
 Conc: 1.40 ng/ml



#19 AR-1242-4

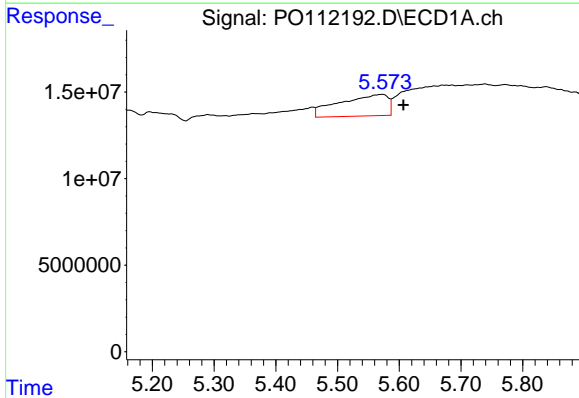
R.T.: 4.958 min
 Delta R.T.: 0.003 min
 Response: 1252202
 Conc: 5.56 ng/ml

Instrument :
 ECD_O
 ClientSampleId :
 TP-23



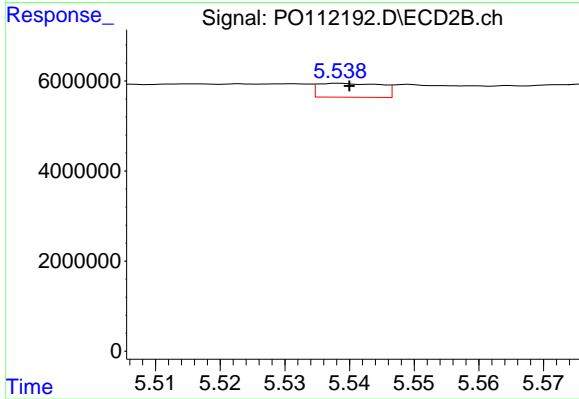
#19 AR-1242-4

R.T.: 5.024 min
 Delta R.T.: 0.004 min
 Response: 186922
 Conc: 1.32 ng/ml



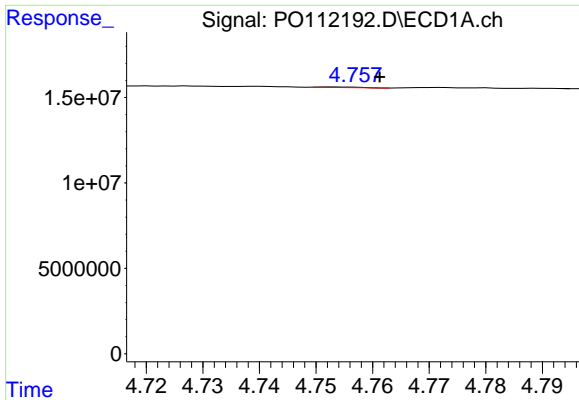
#20 AR-1242-5

R.T.: 5.573 min
 Delta R.T.: -0.034 min
 Response: 67740661
 Conc: 320.03 ng/ml



#20 AR-1242-5

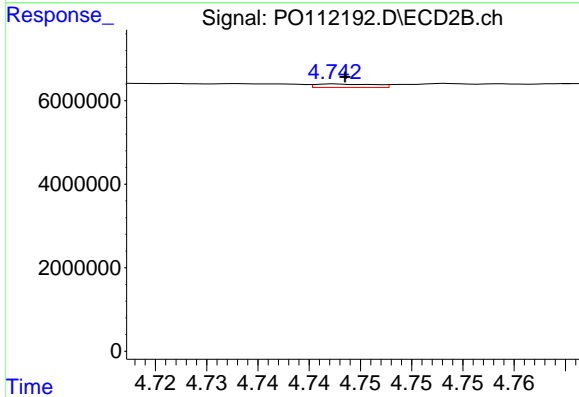
R.T.: 5.538 min
 Delta R.T.: -0.002 min
 Response: 2103495
 Conc: 11.57 ng/ml



#21 AR-1248-1

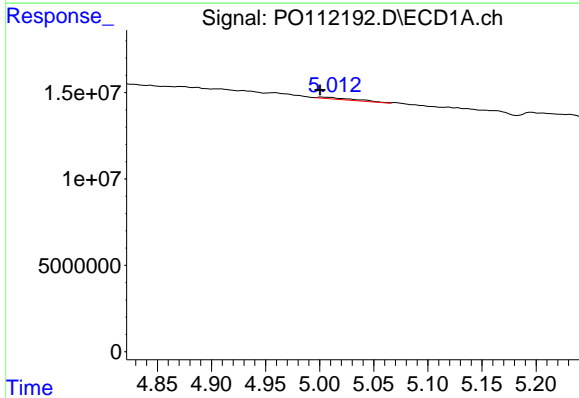
R.T.: 4.753 min
 Delta R.T.: -0.008 min
 Response: 161223
 Conc: 0.71 ng/ml

Instrument :
 ECD_O
 ClientSampleId :
 TP-23



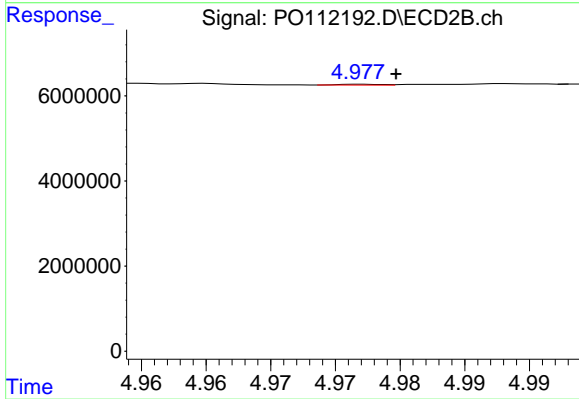
#21 AR-1248-1

R.T.: 4.743 min
 Delta R.T.: 0.000 min
 Response: 333801
 Conc: 2.16 ng/ml



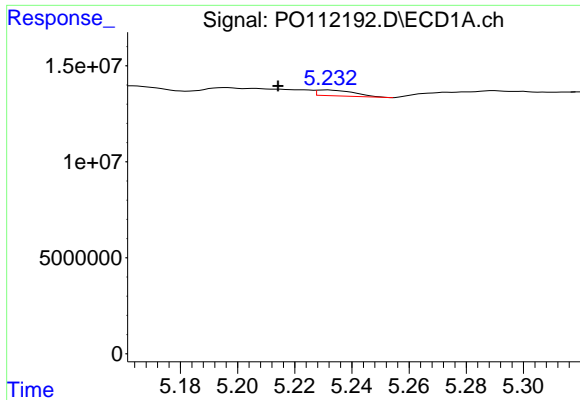
#22 AR-1248-2

R.T.: 5.002 min
 Delta R.T.: 0.002 min
 Response: 2475539
 Conc: 8.03 ng/ml



#22 AR-1248-2

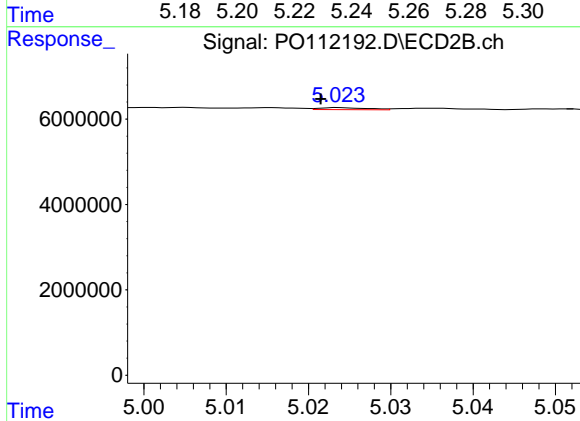
R.T.: 4.977 min
 Delta R.T.: -0.003 min
 Response: 43665
 Conc: 0.21 ng/ml



#23 AR-1248-3

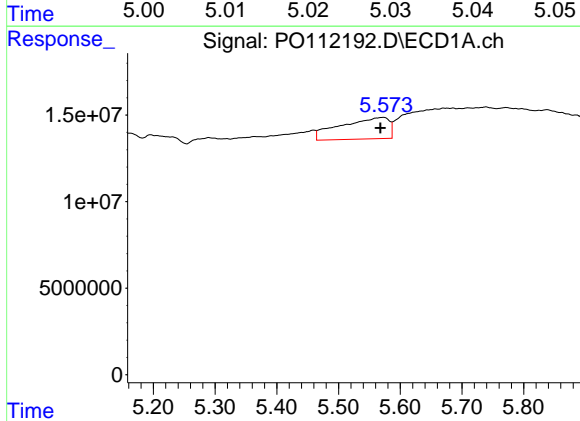
R.T.: 5.231 min
 Delta R.T.: 0.017 min
 Response: 2749689
 Conc: 6.75 ng/ml

Instrument :
 ECD_O
 ClientSampleId :
 TP-23



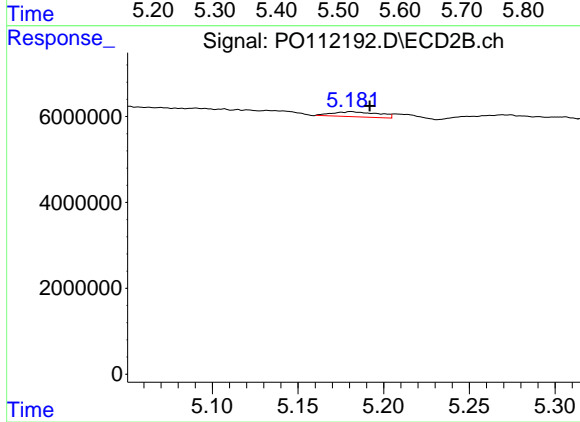
#23 AR-1248-3

R.T.: 5.024 min
 Delta R.T.: 0.002 min
 Response: 186922
 Conc: 0.87 ng/ml



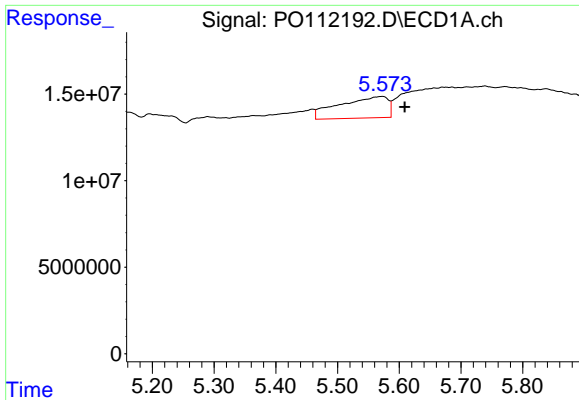
#24 AR-1248-4

R.T.: 5.573 min
 Delta R.T.: 0.005 min
 Response: 67740661
 Conc: 117.37 ng/ml



#24 AR-1248-4

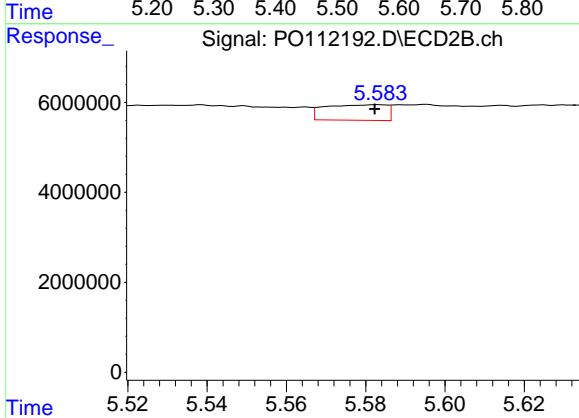
R.T.: 5.181 min
 Delta R.T.: -0.011 min
 Response: 2165572
 Conc: 8.37 ng/ml



#25 AR-1248-5

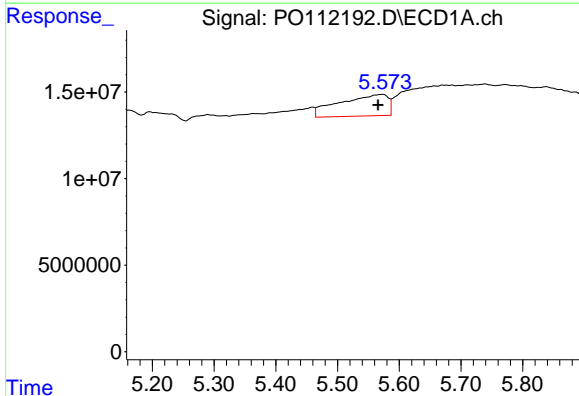
R.T.: 5.573 min
 Delta R.T.: -0.036 min
 Response: 67740661
 Conc: 173.56 ng/ml

Instrument :
 ECD_O
 ClientSampleId :
 TP-23



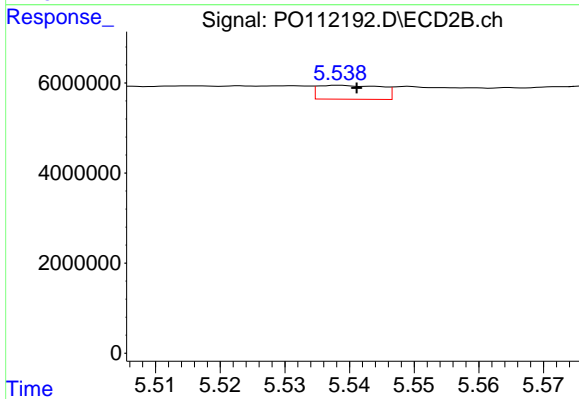
#25 AR-1248-5

R.T.: 5.583 min
 Delta R.T.: 0.000 min
 Response: 3747106
 Conc: 14.96 ng/ml



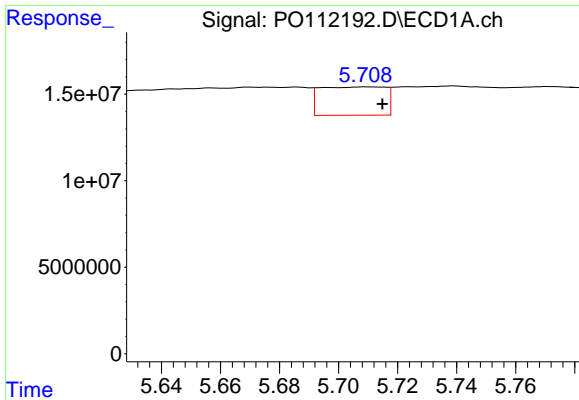
#26 AR-1254-1

R.T.: 5.573 min
 Delta R.T.: 0.007 min
 Response: 67740661
 Conc: 110.13 ng/ml



#26 AR-1254-1

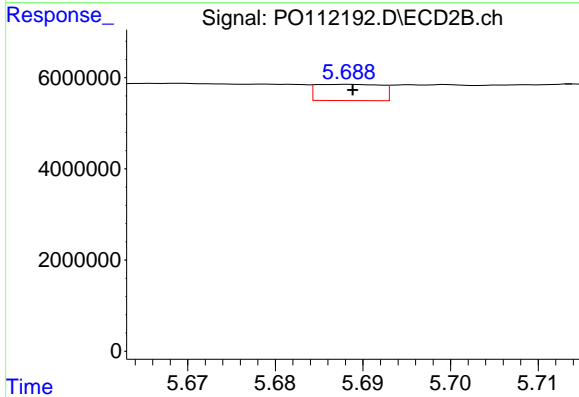
R.T.: 5.538 min
 Delta R.T.: -0.003 min
 Response: 2103495
 Conc: 5.52 ng/ml



#27 AR-1254-2

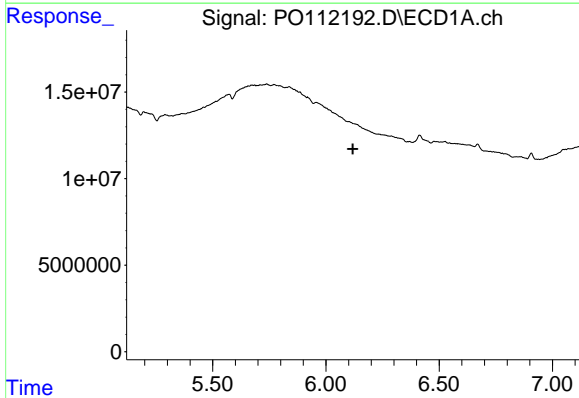
R.T.: 5.709 min
 Delta R.T.: -0.006 min
 Response: 25056503
 Conc: 46.77 ng/ml

Instrument :
 ECD_O
 ClientSampleId :
 TP-23



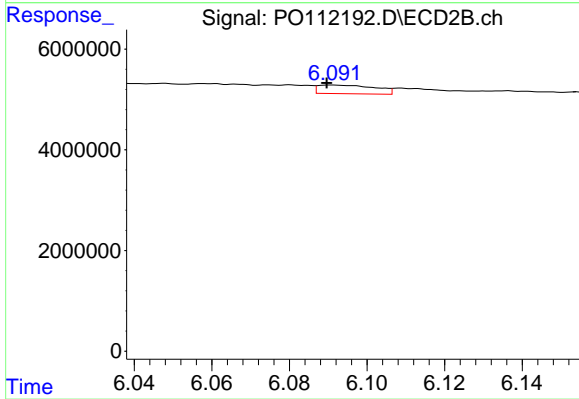
#27 AR-1254-2

R.T.: 5.688 min
 Delta R.T.: 0.000 min
 Response: 1819259
 Conc: 5.48 ng/ml



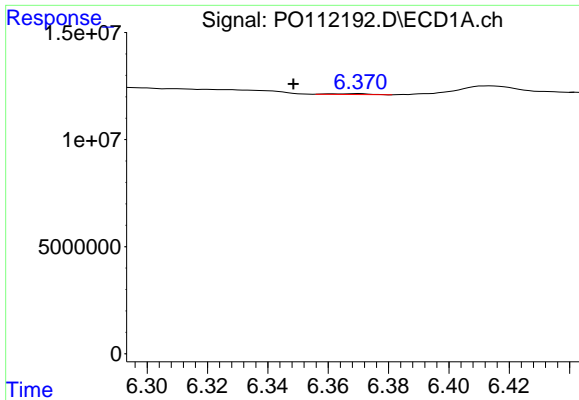
#28 AR-1254-3

R.T.: 0.000 min
 Exp R.T. : 6.119 min
 Response: 0
 Conc: N.D.



#28 AR-1254-3

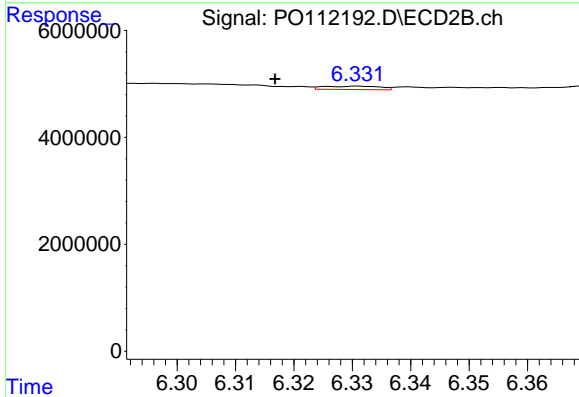
R.T.: 6.091 min
 Delta R.T.: 0.001 min
 Response: 1733594
 Conc: 3.60 ng/ml



#29 AR-1254-4

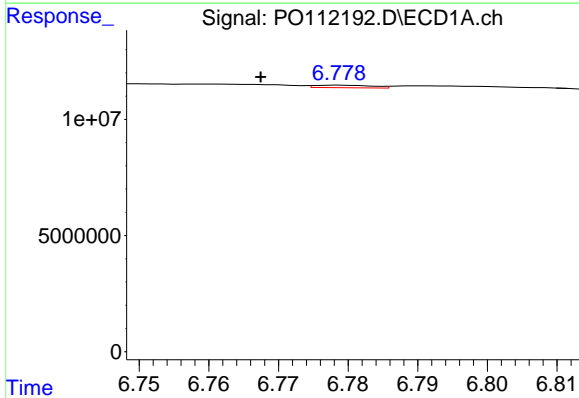
R.T.: 6.370 min
 Delta R.T.: 0.022 min
 Response: 358042
 Conc: 0.74 ng/ml

Instrument :
 ECD_O
 ClientSampleId :
 TP-23



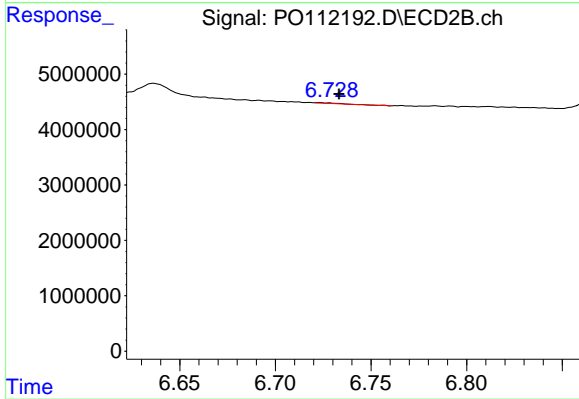
#29 AR-1254-4

R.T.: 6.331 min
 Delta R.T.: 0.014 min
 Response: 427886
 Conc: 1.64 ng/ml



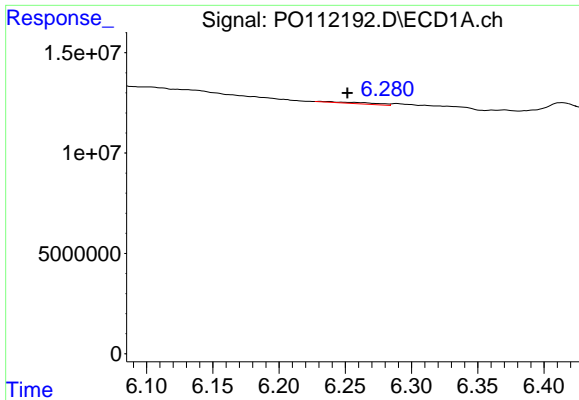
#30 AR-1254-5

R.T.: 6.779 min
 Delta R.T.: 0.012 min
 Response: 618805
 Conc: 0.80 ng/ml



#30 AR-1254-5

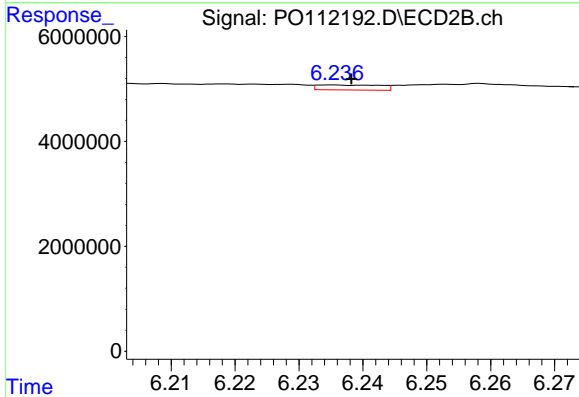
R.T.: 6.723 min
 Delta R.T.: -0.010 min
 Response: 109004
 Conc: 0.31 ng/ml



#31 AR-1260-1

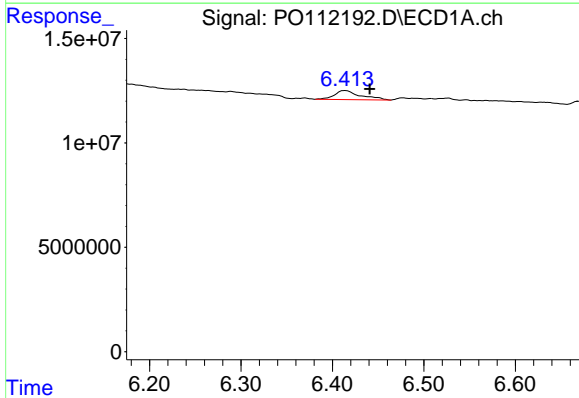
R.T.: 6.231 min
 Delta R.T.: -0.020 min
 Response: 1680587
 Conc: 3.35 ng/ml

Instrument :
 ECD_O
 ClientSampleId :
 TP-23



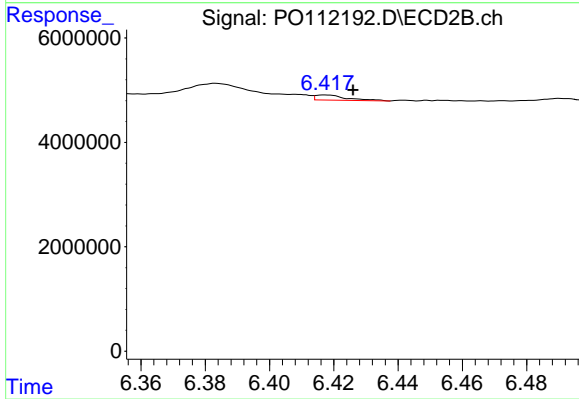
#31 AR-1260-1

R.T.: 6.235 min
 Delta R.T.: -0.003 min
 Response: 650296
 Conc: 2.32 ng/ml



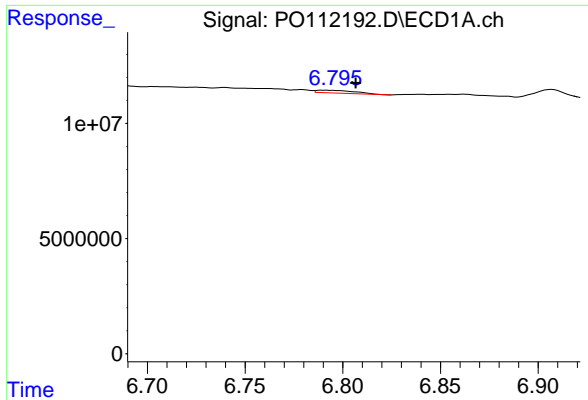
#32 AR-1260-2

R.T.: 6.413 min
 Delta R.T.: -0.027 min
 Response: 8586096
 Conc: 11.63 ng/ml



#32 AR-1260-2

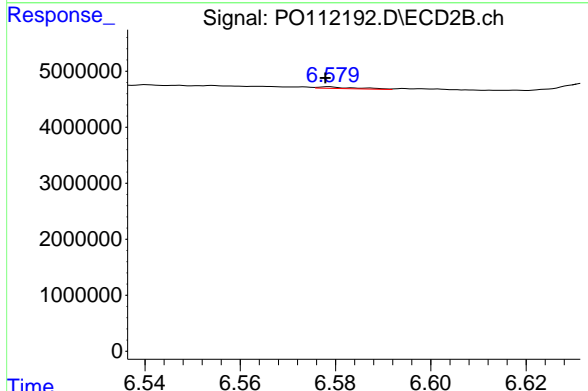
R.T.: 6.418 min
 Delta R.T.: -0.009 min
 Response: 655940
 Conc: 1.93 ng/ml



#33 AR-1260-3

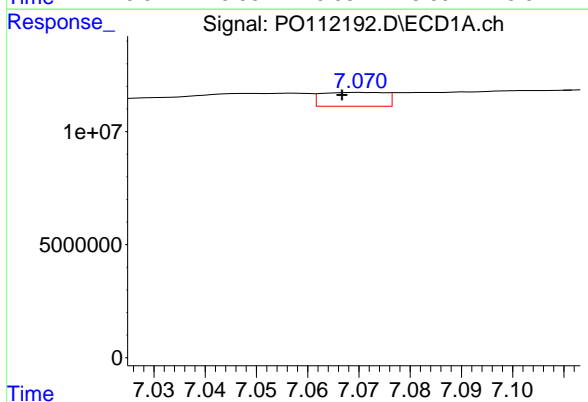
R.T.: 6.791 min
 Delta R.T.: -0.016 min
 Response: 1673433
 Conc: 2.55 ng/ml

Instrument :
 ECD_O
 ClientSampleId :
 TP-23



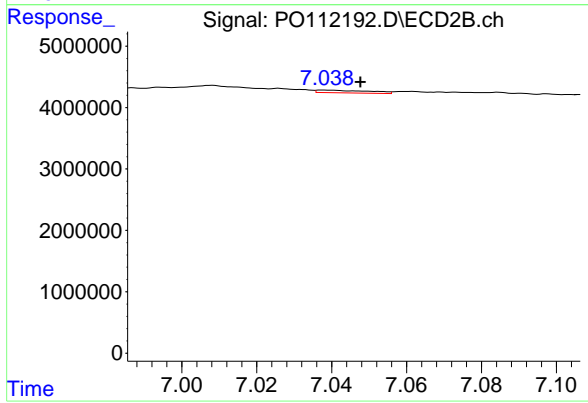
#33 AR-1260-3

R.T.: 6.579 min
 Delta R.T.: 0.000 min
 Response: 159540
 Conc: 0.58 ng/ml



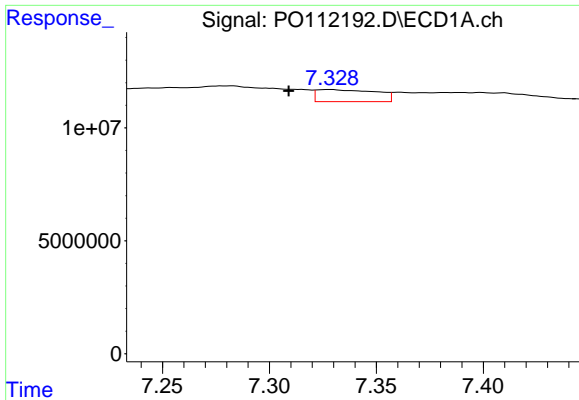
#34 AR-1260-4

R.T.: 7.070 min
 Delta R.T.: 0.004 min
 Response: 5283008
 Conc: 12.14 ng/ml



#34 AR-1260-4

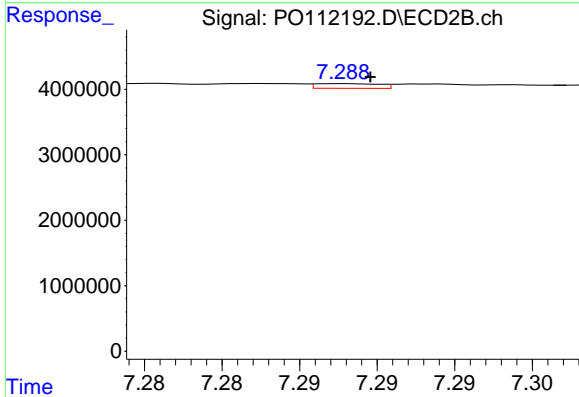
R.T.: 7.038 min
 Delta R.T.: -0.010 min
 Response: 431801
 Conc: 2.15 ng/ml



#35 AR-1260-5

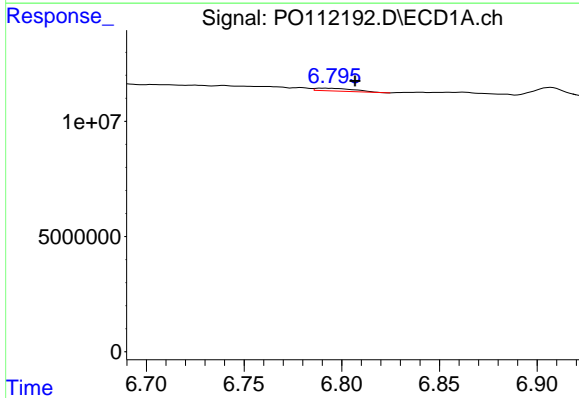
R.T.: 7.328 min
 Delta R.T.: 0.020 min
 Response: 10322283
 Conc: 8.18 ng/ml

Instrument :
 ECD_O
 ClientSampleId :
 TP-23



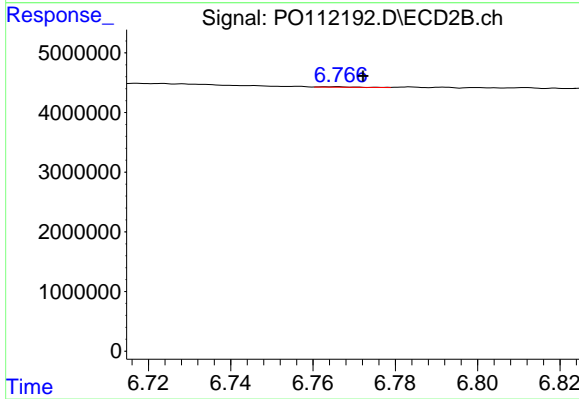
#35 AR-1260-5

R.T.: 7.288 min
 Delta R.T.: -0.002 min
 Response: 205096
 Conc: 0.46 ng/ml



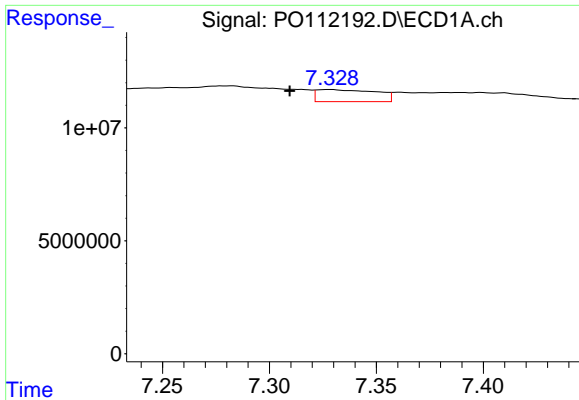
#36 AR-1262-1

R.T.: 6.791 min
 Delta R.T.: -0.016 min
 Response: 1673433
 Conc: 1.64 ng/ml



#36 AR-1262-1

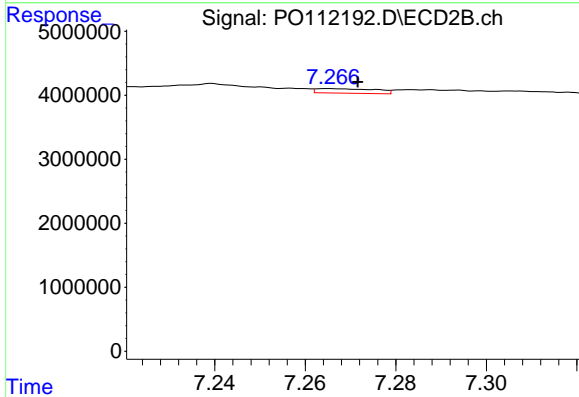
R.T.: 6.766 min
 Delta R.T.: -0.006 min
 Response: 41949
 Conc: 0.10 ng/ml



#37 AR-1262-2

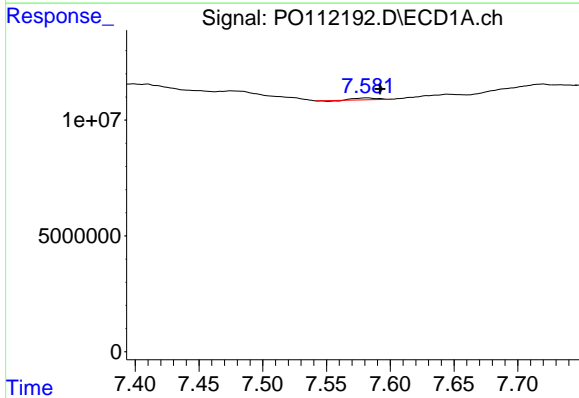
R.T.: 7.328 min
 Delta R.T.: 0.019 min
 Response: 10322283
 Conc: 6.30 ng/ml

Instrument :
 ECD_O
 ClientSampleId :
 TP-23



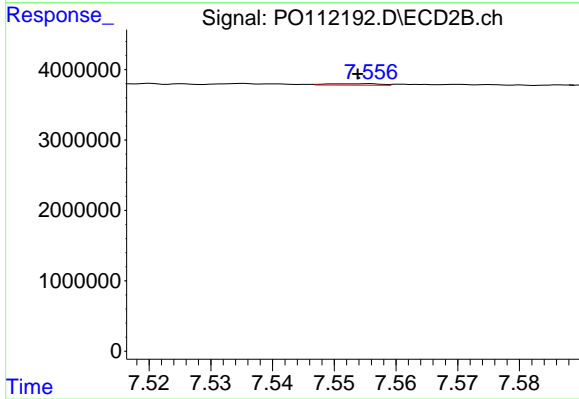
#37 AR-1262-2

R.T.: 7.265 min
 Delta R.T.: -0.007 min
 Response: 644878
 Conc: 1.26 ng/ml



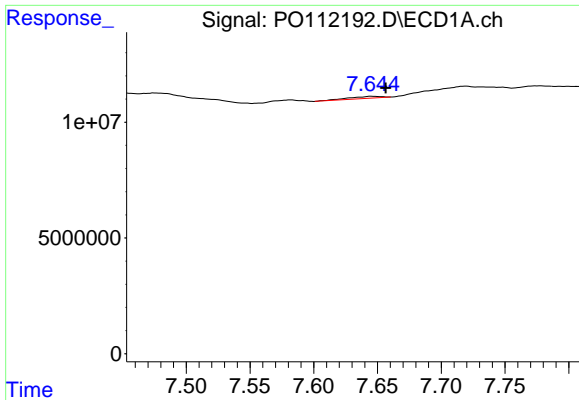
#38 AR-1262-3

R.T.: 7.582 min
 Delta R.T.: -0.010 min
 Response: 818848
 Conc: 1.28 ng/ml



#38 AR-1262-3

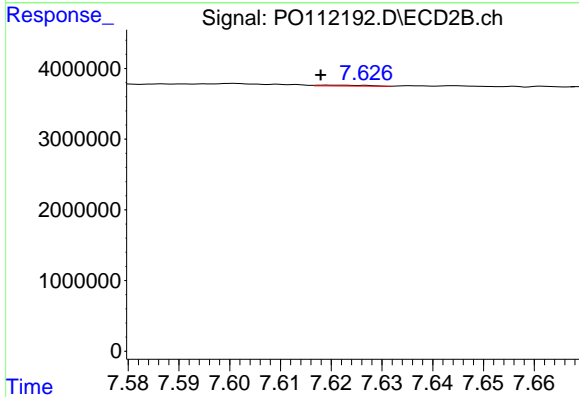
R.T.: 7.556 min
 Delta R.T.: 0.002 min
 Response: 126240
 Conc: 0.70 ng/ml



#39 AR-1262-4

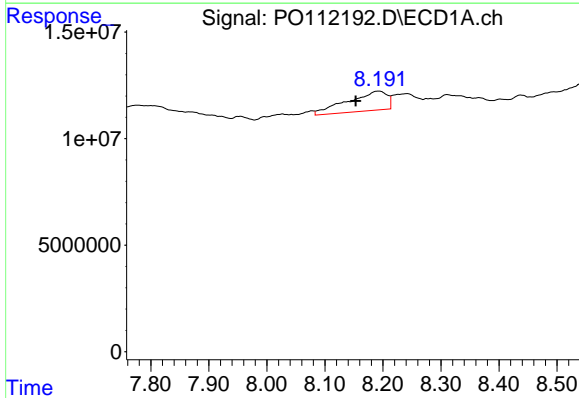
R.T.: 7.645 min
 Delta R.T.: -0.011 min
 Response: 1516290
 Conc: 1.42 ng/ml

Instrument :
 ECD_O
 ClientSampleId :
 TP-23



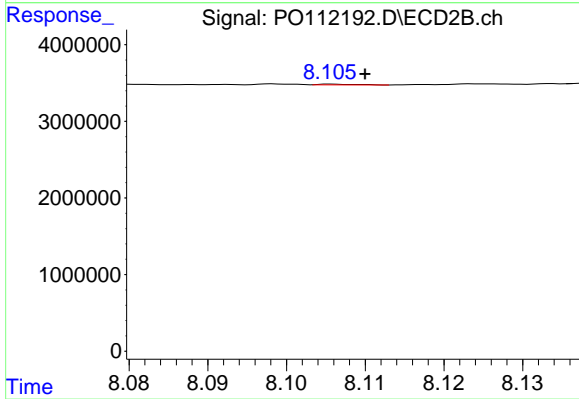
#39 AR-1262-4

R.T.: 7.620 min
 Delta R.T.: 0.002 min
 Response: 82408
 Conc: 0.28 ng/ml



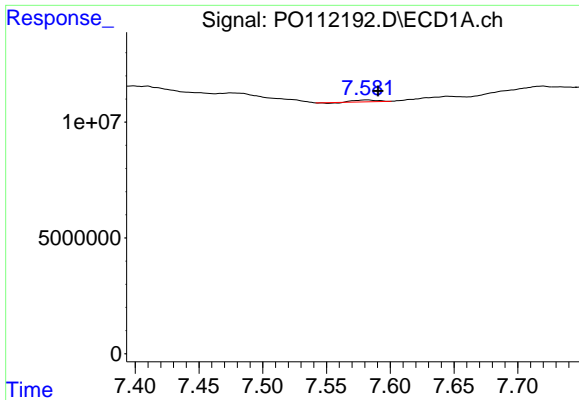
#40 AR-1262-5

R.T.: 8.192 min
 Delta R.T.: 0.039 min
 Response: 42940539
 Conc: 95.82 ng/ml



#40 AR-1262-5

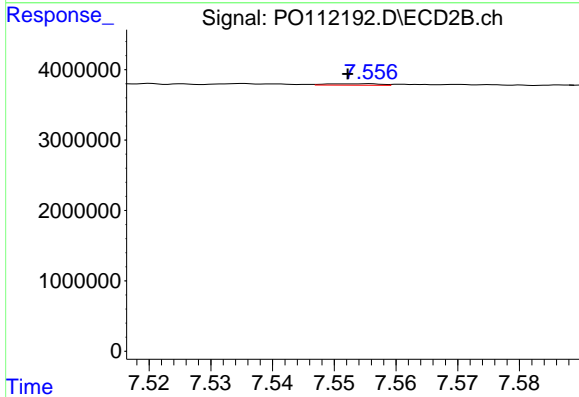
R.T.: 8.106 min
 Delta R.T.: -0.004 min
 Response: 31907
 Conc: 0.30 ng/ml



#41 AR-1268-1

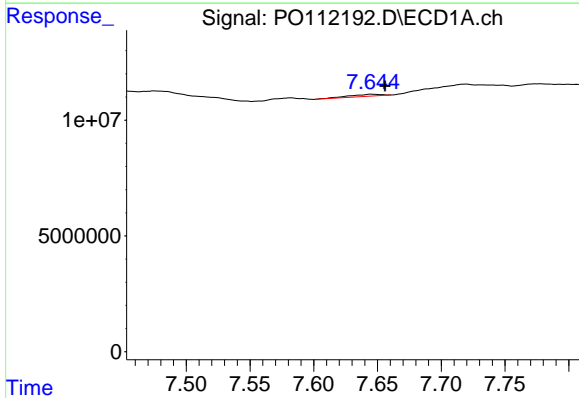
R.T.: 7.582 min
 Delta R.T.: -0.009 min
 Response: 818848
 Conc: 0.45 ng/ml

Instrument :
 ECD_O
 ClientSampleId :
 TP-23



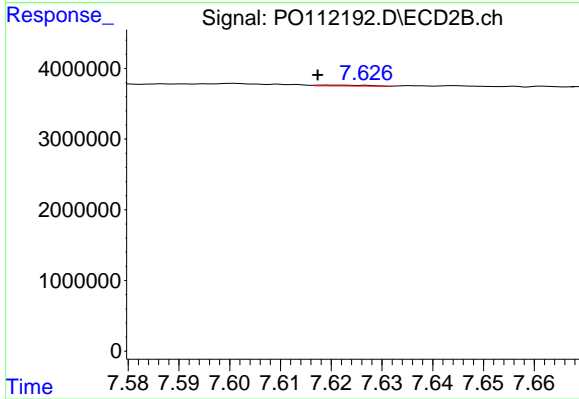
#41 AR-1268-1

R.T.: 7.556 min
 Delta R.T.: 0.004 min
 Response: 126240
 Conc: 0.26 ng/ml



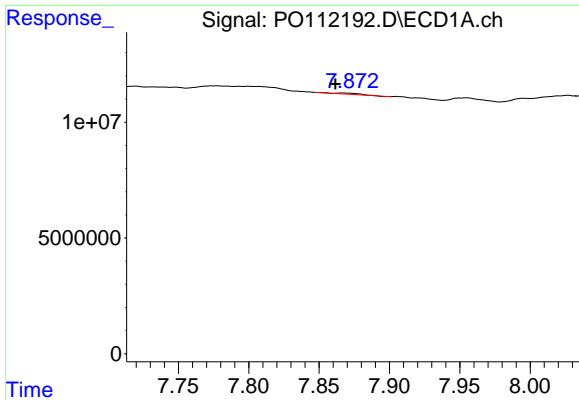
#42 AR-1268-2

R.T.: 7.645 min
 Delta R.T.: -0.011 min
 Response: 1516290
 Conc: 0.97 ng/ml



#42 AR-1268-2

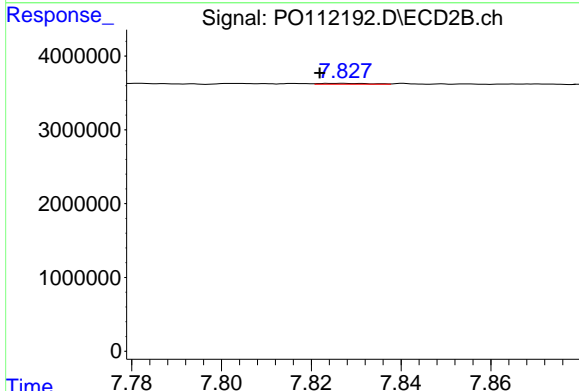
R.T.: 7.620 min
 Delta R.T.: 0.002 min
 Response: 82408
 Conc: 0.20 ng/ml



#43 AR-1268-3

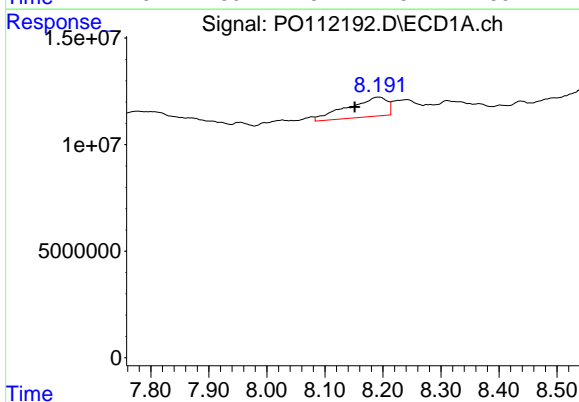
R.T.: 7.866 min
 Delta R.T.: 0.005 min
 Response: 562930
 Conc: 0.43 ng/ml

Instrument :
 ECD_O
 ClientSampleId :
 TP-23



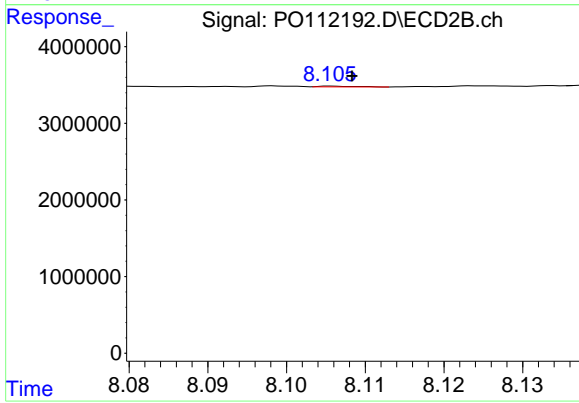
#43 AR-1268-3

R.T.: 7.827 min
 Delta R.T.: 0.005 min
 Response: 98421
 Conc: 0.31 ng/ml



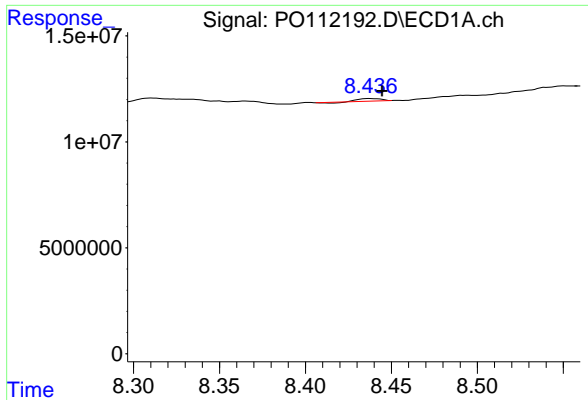
#44 AR-1268-4

R.T.: 8.192 min
 Delta R.T.: 0.041 min
 Response: 42940539
 Conc: 89.38 ng/ml



#44 AR-1268-4

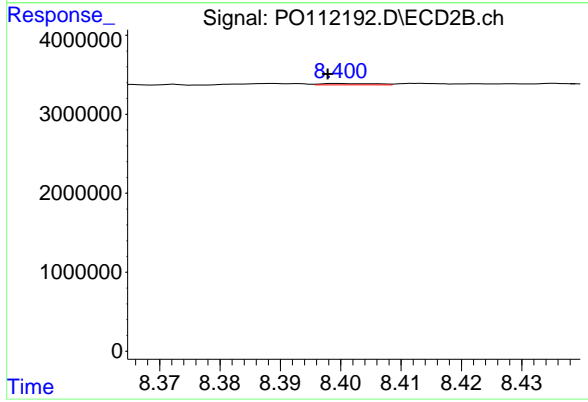
R.T.: 8.106 min
 Delta R.T.: -0.003 min
 Response: 31907
 Conc: 0.29 ng/ml



#45 AR-1268-5

R.T.: 8.437 min
 Delta R.T.: -0.008 min
 Response: 910541
 Conc: 0.28 ng/ml

Instrument :
 ECD_O
 ClientSampleId :
 TP-23



#45 AR-1268-5

R.T.: 8.400 min
 Delta R.T.: 0.002 min
 Response: 111628
 Conc: 0.15 ng/ml