

Data Path : Z:\pestpcbsrv\HPCHEM1\ECD_0\Data\P0071025\
 Data File : P0112193.D
 Signal(s) : Signal #1: ECD1A.ch Signal #2: ECD2B.ch
 Acq On : 10 Jul 2025 15:32
 Operator : YP/AJ
 Sample : Q2543-04
 Misc :
 ALS Vial : 14 Sample Multiplier: 1

Instrument :
 ECD_0
 ClientSampleId :
 TP-23-99

Integration File signal 1: autoint1.e
 Integration File signal 2: autoint2.e
 Quant Time: Jul 10 16:05:37 2025
 Quant Method : Z:\pestpcbsrv\HPCHEM1\ECD_0\methods\P0070825.M
 Quant Title : GC EXTRACTABLES
 QLast Update : Wed Jul 09 10:50:50 2025
 Response via : Initial Calibration
 Integrator: ChemStation

Volume Inj. : 2 µl
 Signal #1 Phase : ZB-MR1 Signal #2 Phase: ZB-MR2
 Signal #1 Info : 30Mx0.32mmx 0.50µ Signal #2 Info : 30M x 0.32mm x 0.25µm

Compound	RT#1	RT#2	Resp#1	Resp#2	ng/ml	ng/ml

System Monitoring Compounds						
1) SA Tetrachlo...	3.670	3.665	221.1E6	136.8E6	22.342	21.479
2) SA Decachlor...	8.698	8.647	88552312	24732904	12.952	14.351
Target Compounds						
3) L1 AR-1016-1	4.748	4.755	-102396	633873	N.D.	2.845 #
4) L1 AR-1016-2	4.787	4.774	1079666	210590	2.171	0.640 #
5) L1 AR-1016-3	4.840	4.951	874978	126090	2.703	0.742 #
6) L1 AR-1016-4	4.956	4.994	314170	453609	1.223	3.306 #
7) L1 AR-1016-5	5.201	5.183	13148973	4473906	48.048	25.943 #
8) L2 AR-1221-1	3.824f	3.879	1609218	110380	13.800	1.341 #
9) L2 AR-1221-2	3.973	3.965	3751600	2632486	47.585	44.353
10) L2 AR-1221-3	4.065	4.051	1173020	1503432	4.351	7.964 #
11) L3 AR-1232-1	4.065	4.051	1173020	1503432	5.464	10.016 #
12) L3 AR-1232-2	4.547	4.755	2850174	633873	25.081	4.141 #
13) L3 AR-1232-3	4.787	4.936	1079666	483091	4.715	6.398 #
14) L3 AR-1232-4	4.956	5.014	314170	497562	2.749	7.540 #
15) L3 AR-1232-5	5.014	5.183	3735904	4473906	50.898	60.247
16) L4 AR-1242-1	4.748	4.731	-102396	605411	N.D.	3.123 #
17) L4 AR-1242-2	4.787	4.755	1079666	633873	2.535	2.237
18) L4 AR-1242-3	4.840	4.936	874978	483091	3.197	3.316
19) L4 AR-1242-4	4.956	5.014	314170	497562	1.394	3.508 #
20) L4 AR-1242-5	5.619	5.512	3819581	4207856	18.045	23.154 #
21) L5 AR-1248-1	4.748	4.755	-102396	633873	N.D.	4.106 #
22) L5 AR-1248-2	5.014	4.994	3735904	453609	12.117	2.204 #
23) L5 AR-1248-3	5.201	5.014	13148973	497562	32.282	2.316 #
24) L5 AR-1248-4	5.562	5.183	3775446	4473906	6.542	17.292 #
25) L5 AR-1248-5	5.619	5.589	3819581	3656881	9.786	14.595 #
26) L6 AR-1254-1	5.562	5.512	3775446	4207856	6.138	11.039 #
27) L6 AR-1254-2	5.684	5.715	228999	2900007	0.427	8.740 #
28) L6 AR-1254-3	6.119	6.103	4980510	8353355	5.932	17.329 #
29) L6 AR-1254-4	6.364	6.330	653157	458088	1.358	1.757 #
30) L6 AR-1254-5	6.765	6.756	3677029	137918	4.751	0.387 #
31) L7 AR-1260-1	6.248	6.256	10751956	3346568	21.451	11.928 #
32) L7 AR-1260-2	6.413	6.382f	7645513	1125090	10.358	3.309 #
33) L7 AR-1260-3	6.795	6.637f	3986326	3240890	6.082	11.760 #
35) L7 AR-1260-5	7.282	7.287	2433753	1710346	1.928	3.820 #
36) L8 AR-1262-1	6.795	6.756	3986326	137918	3.902	0.339 #
37) L8 AR-1262-2	7.282	7.287	2433753	1710346	1.485	3.337 #
38) L8 AR-1262-3	7.581	7.558	4452601	3649161	6.936	20.327 #
39) L8 AR-1262-4	7.645	7.558f	1357400	3649161	1.267	12.544 #
40) L8 AR-1262-5	8.157	8.142	5604686	52213	12.507	0.494 #
41) L9 AR-1268-1	7.581	7.558	4452601	3649161	2.423	7.425 #
42) L9 AR-1268-2	7.645	7.558f	1357400	3649161	0.871	8.747 #

Data Path : Z:\pestpcbsrv\HPCHEM1\ECD_0\Data\P0071025\
 Data File : P0112193.D
 Signal(s) : Signal #1: ECD1A.ch Signal #2: ECD2B.ch
 Acq On : 10 Jul 2025 15:32
 Operator : YP/AJ
 Sample : Q2543-04
 Misc :
 ALS Vial : 14 Sample Multiplier: 1

Instrument :
 ECD_0
 ClientSampleId :
 TP-23-99

Integration File signal 1: autoint1.e
 Integration File signal 2: autoint2.e
 Quant Time: Jul 10 16:05:37 2025
 Quant Method : Z:\pestpcbsrv\HPCHEM1\ECD_0\methods\P0070825.M
 Quant Title : GC EXTRACTABLES
 QLast Update : Wed Jul 09 10:50:50 2025
 Response via : Initial Calibration
 Integrator: ChemStation

Volume Inj. : 2 µl
 Signal #1 Phase : ZB-MR1 Signal #2 Phase: ZB-MR2
 Signal #1 Info : 30Mx0.32mmx 0.50µ Signal #2 Info : 30M x 0.32mm x 0.25µm

	Compound	RT#1	RT#2	Resp#1	Resp#2	ng/ml	ng/ml
44)	L9 AR-1268-4	8.157	8.142	5604686	52213	11.667	0.468 #
45)	L9 AR-1268-5	8.452	8.394	-78643	244937	N.D.	0.337 #

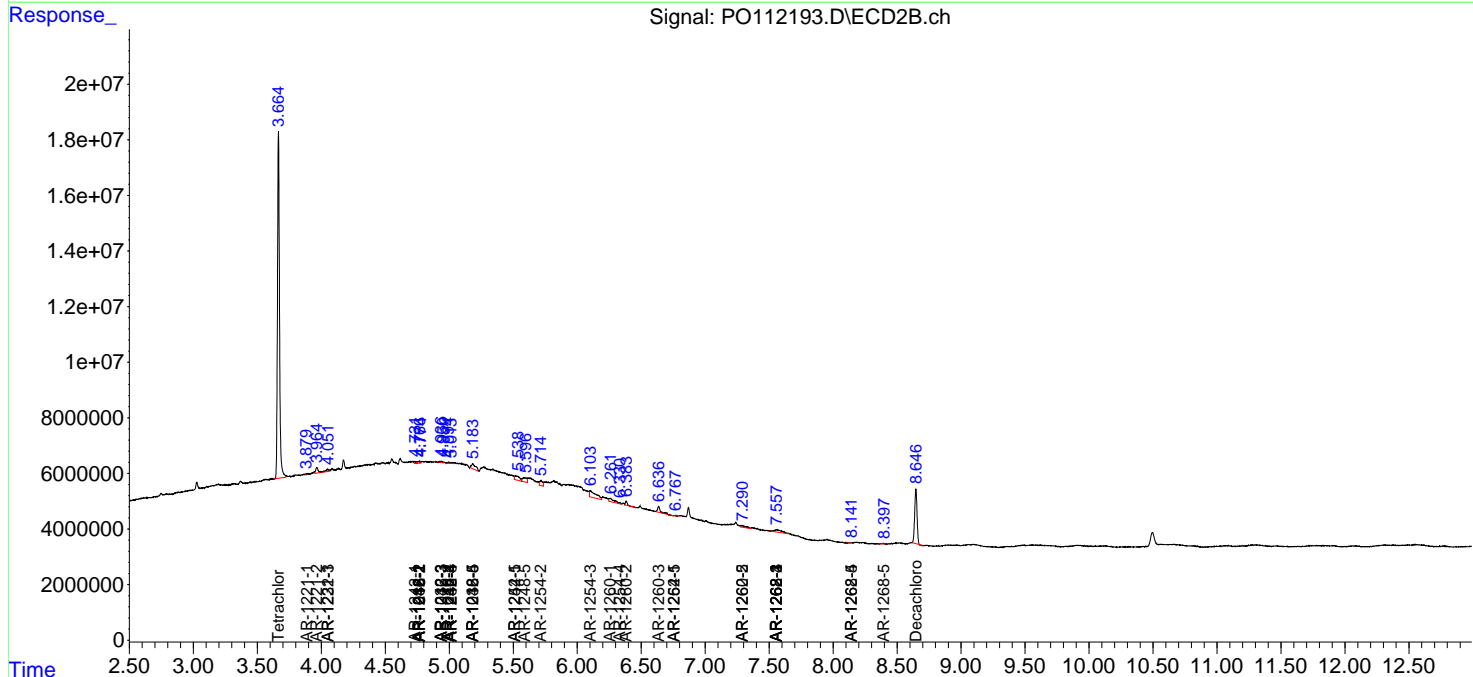
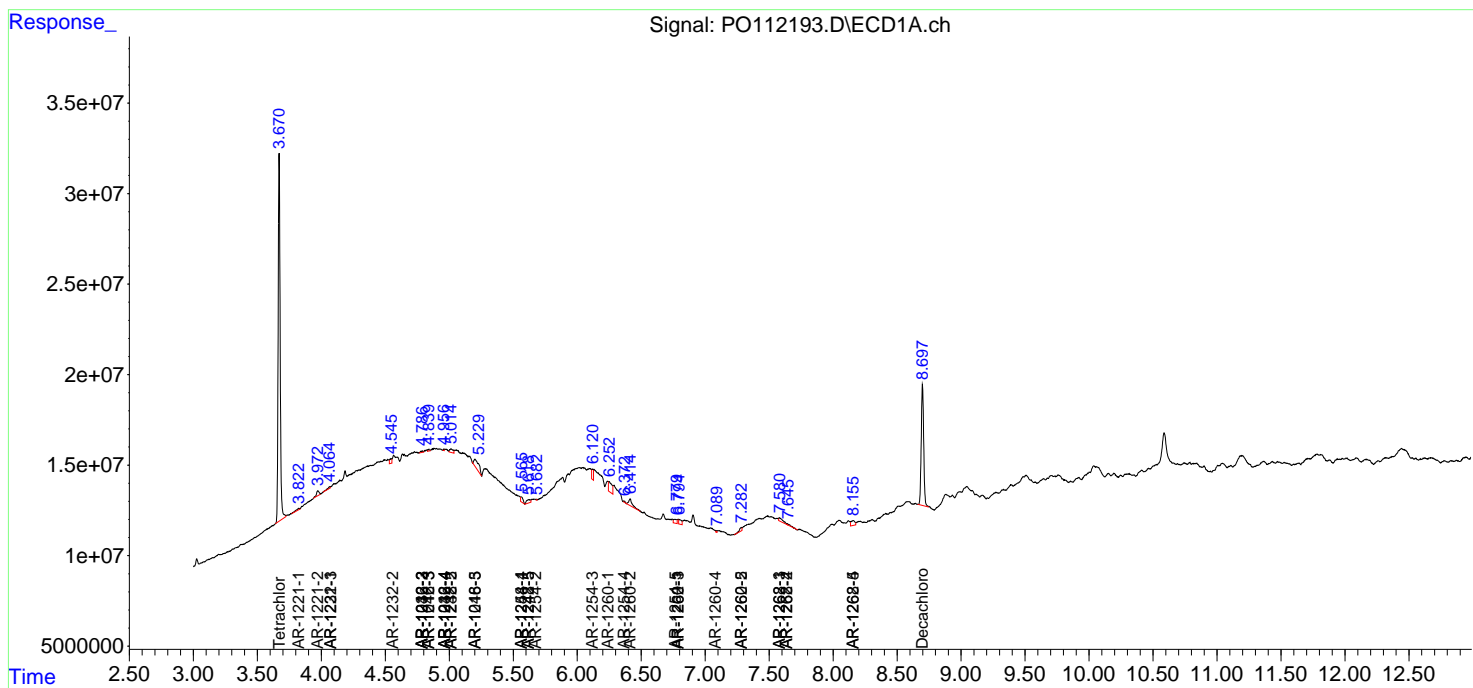
(f)=RT Delta > 1/2 Window (#)=Amounts differ by > 25% (m)=manual int.

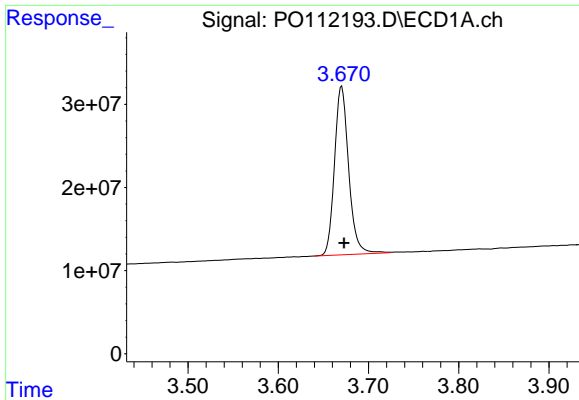
Data Path : Z:\pestpcbsrv\HPCHEM1\ECD_O\Data\PO071025\
 Data File : PO112193.D
 Signal(s) : Signal #1: ECD1A.ch Signal #2: ECD2B.ch
 Acq On : 10 Jul 2025 15:32
 Operator : YP/AJ
 Sample : Q2543-04
 Misc :
 ALS Vial : 14 Sample Multiplier: 1

Instrument :
 ECD_O
 ClientSampleId :
 TP-23-99

Integration File signal 1: autoint1.e
 Integration File signal 2: autoint2.e
 Quant Time: Jul 10 16:05:37 2025
 Quant Method : Z:\pestpcbsrv\HPCHEM1\ECD_O\methods\PO070825.M
 Quant Title : GC EXTRACTABLES
 QLast Update : Wed Jul 09 10:50:50 2025
 Response via : Initial Calibration
 Integrator: ChemStation

Volume Inj. : 2 µl
 Signal #1 Phase : ZB-MR1 Signal #2 Phase: ZB-MR2
 Signal #1 Info : 30Mx0.32mmx 0.50µ Signal #2 Info : 30M x 0.32mm x 0.25µm



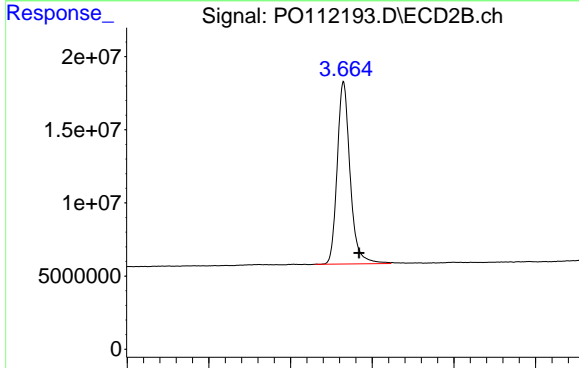


#1 Tetrachloro-m-xylene

R.T.: 3.670 min
 Delta R.T.: -0.003 min
 Response: 221067457
 Conc: 22.34 ng/ml

Instrument :
 ECD_O
 ClientSampleId :
 TP-23-99

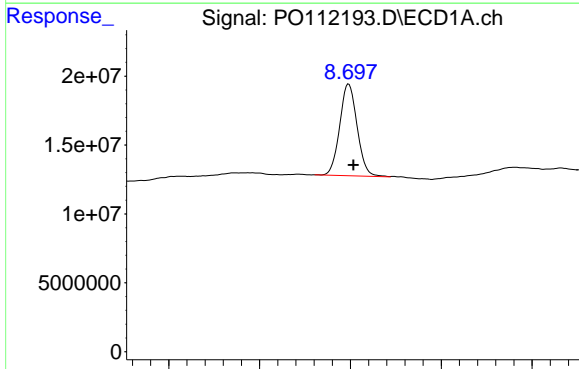
Time 3.50 3.60 3.70 3.80 3.90



#1 Tetrachloro-m-xylene

R.T.: 3.665 min
 Delta R.T.: -0.019 min
 Response: 136842566
 Conc: 21.48 ng/ml

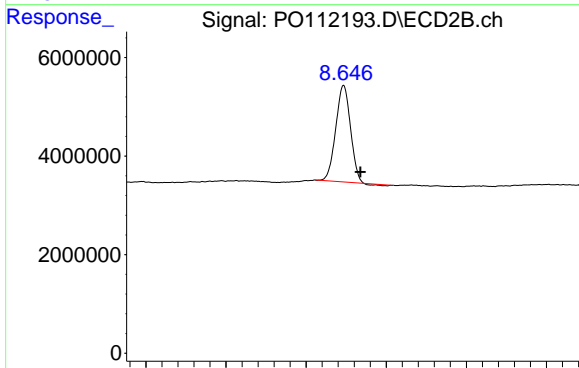
Time 3.40 3.50 3.60 3.70 3.80 3.90



#2 Decachlorobiphenyl

R.T.: 8.698 min
 Delta R.T.: -0.005 min
 Response: 88552312
 Conc: 12.95 ng/ml

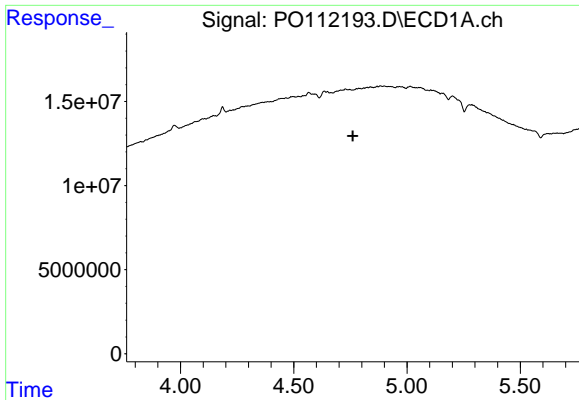
Time 8.50 8.60 8.70 8.80 8.90



#2 Decachlorobiphenyl

R.T.: 8.647 min
 Delta R.T.: -0.021 min
 Response: 24732904
 Conc: 14.35 ng/ml

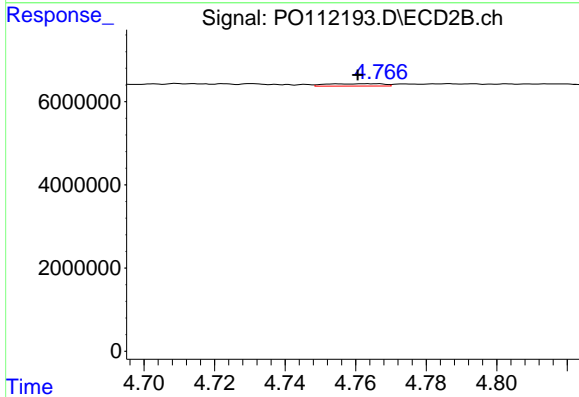
Time 8.40 8.50 8.60 8.70 8.80 8.90



#3 AR-1016-1

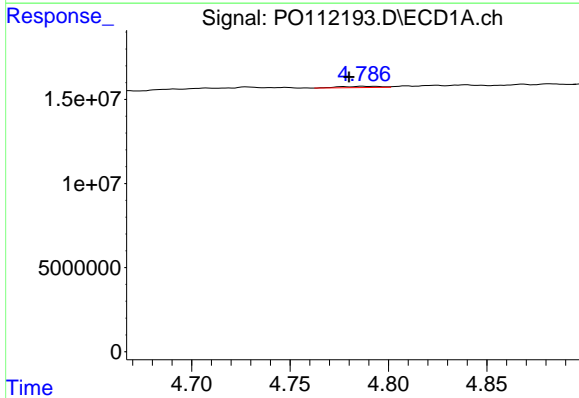
R.T.: 4.748 min
 Delta R.T.: -0.013 min
 Response: -102396
 Conc: N.D.

Instrument :
 ECD_O
 ClientSampleId :
 TP-23-99



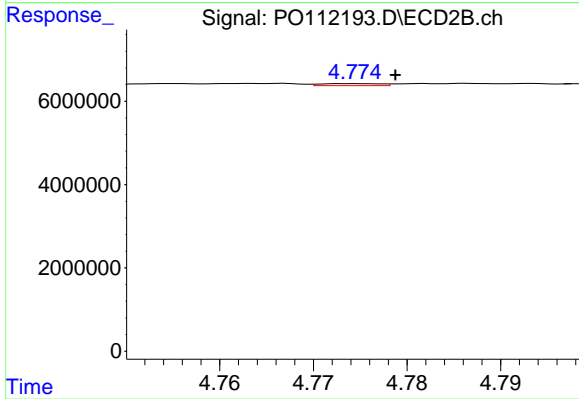
#3 AR-1016-1

R.T.: 4.755 min
 Delta R.T.: -0.006 min
 Response: 633873
 Conc: 2.84 ng/ml



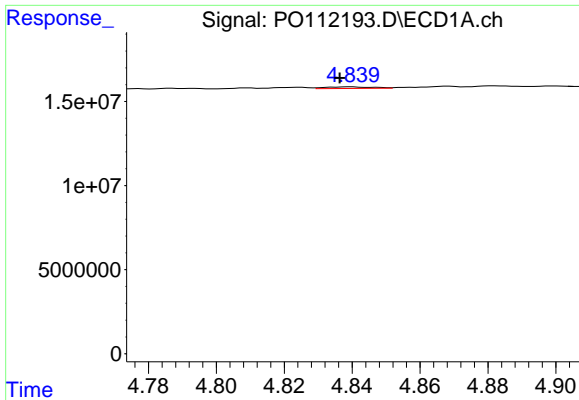
#4 AR-1016-2

R.T.: 4.787 min
 Delta R.T.: 0.007 min
 Response: 1079666
 Conc: 2.17 ng/ml



#4 AR-1016-2

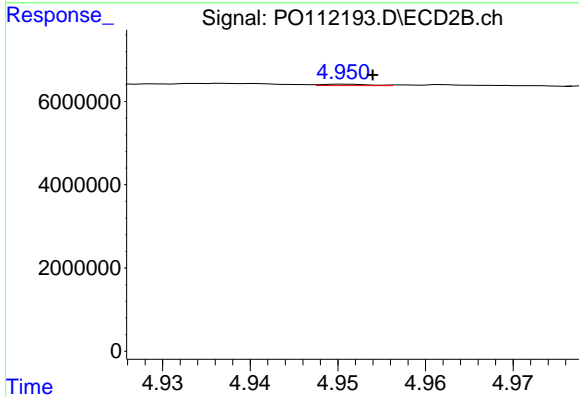
R.T.: 4.774 min
 Delta R.T.: -0.004 min
 Response: 210590
 Conc: 0.64 ng/ml



#5 AR-1016-3

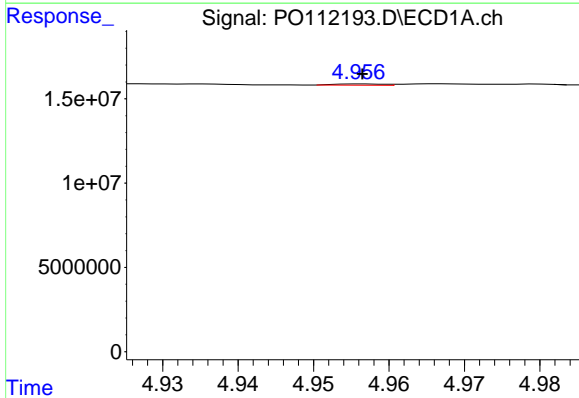
R.T.: 4.840 min
 Delta R.T.: 0.003 min
 Response: 874978
 Conc: 2.70 ng/ml

Instrument :
 ECD_O
 ClientSampleId :
 TP-23-99



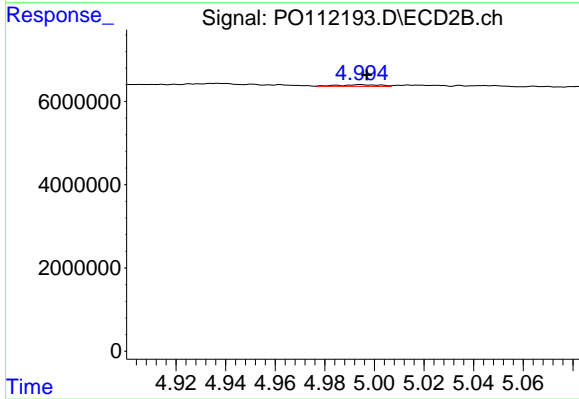
#5 AR-1016-3

R.T.: 4.951 min
 Delta R.T.: -0.003 min
 Response: 126090
 Conc: 0.74 ng/ml



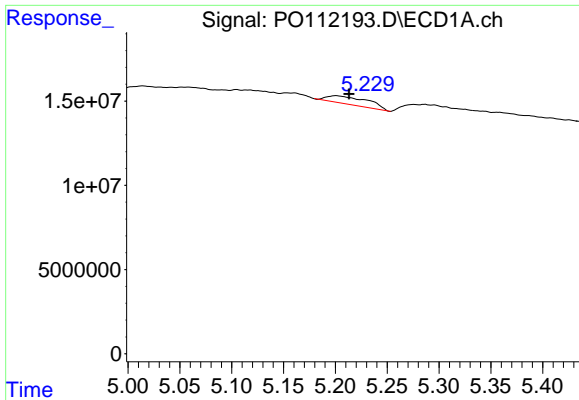
#6 AR-1016-4

R.T.: 4.956 min
 Delta R.T.: 0.000 min
 Response: 314170
 Conc: 1.22 ng/ml



#6 AR-1016-4

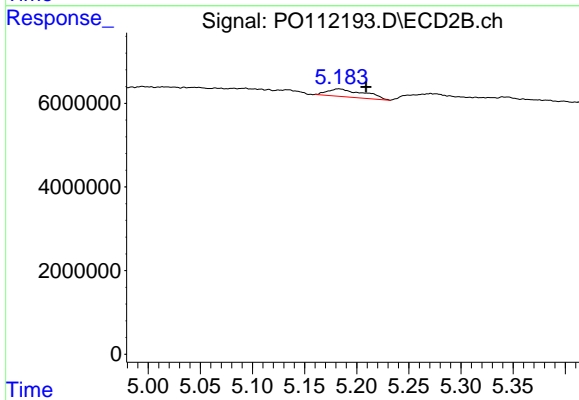
R.T.: 4.994 min
 Delta R.T.: -0.003 min
 Response: 453609
 Conc: 3.31 ng/ml



#7 AR-1016-5

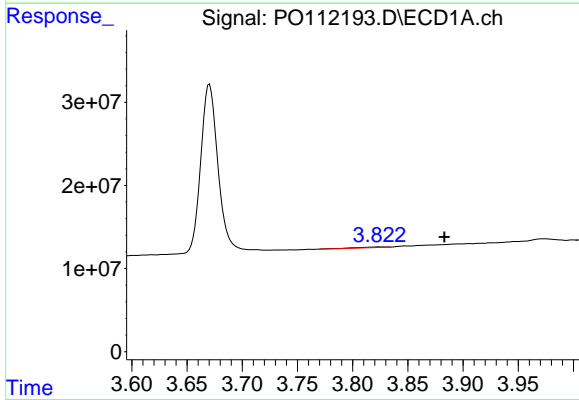
R.T.: 5.201 min
 Delta R.T.: -0.013 min
 Response: 13148973
 Conc: 48.05 ng/ml

Instrument :
 ECD_O
 ClientSampleId :
 TP-23-99



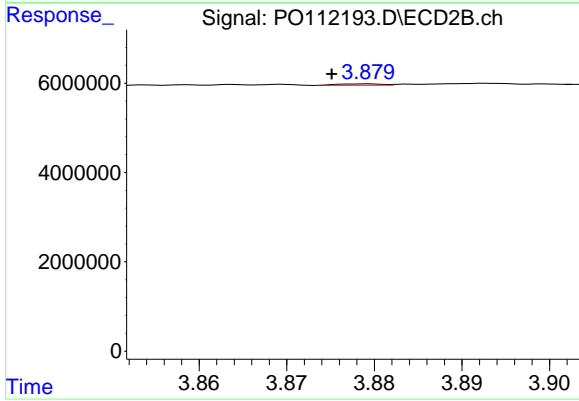
#7 AR-1016-5

R.T.: 5.183 min
 Delta R.T.: -0.026 min
 Response: 4473906
 Conc: 25.94 ng/ml



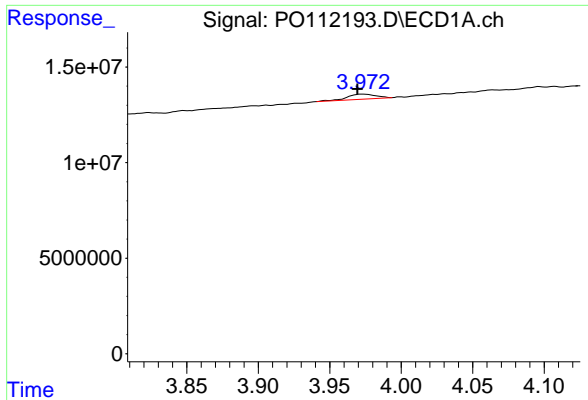
#8 AR-1221-1

R.T.: 3.824 min
 Delta R.T.: -0.059 min
 Response: 1609218
 Conc: 13.80 ng/ml



#8 AR-1221-1

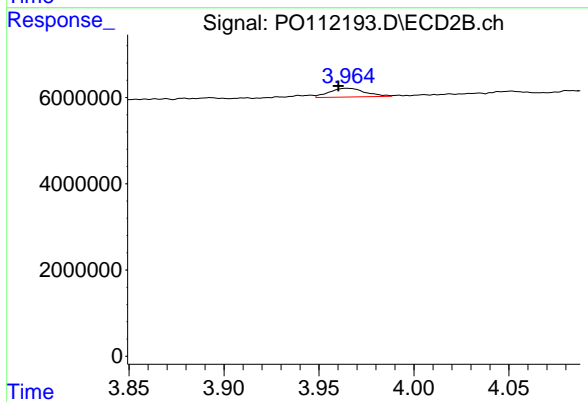
R.T.: 3.879 min
 Delta R.T.: 0.004 min
 Response: 110380
 Conc: 1.34 ng/ml



#9 AR-1221-2

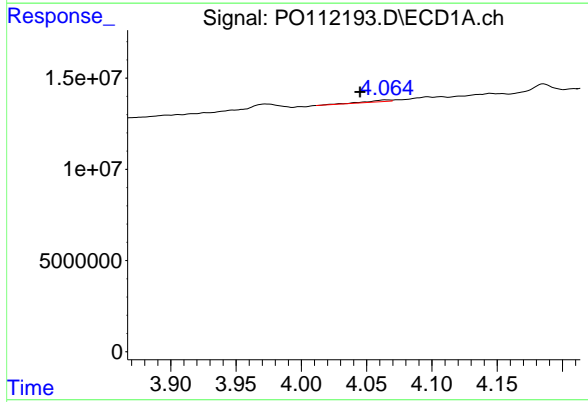
R.T.: 3.973 min
 Delta R.T.: 0.003 min
 Response: 3751600
 Conc: 47.58 ng/ml

Instrument :
 ECD_O
 ClientSampleId :
 TP-23-99



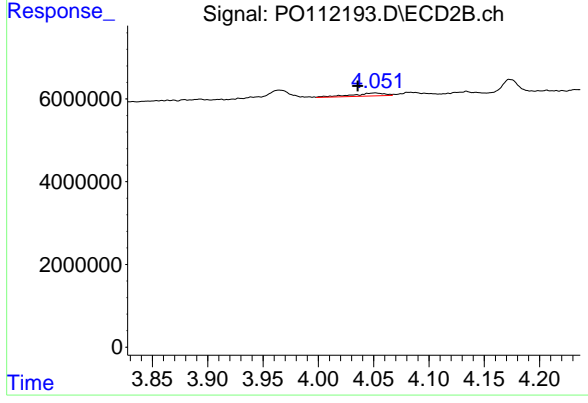
#9 AR-1221-2

R.T.: 3.965 min
 Delta R.T.: 0.004 min
 Response: 2632486
 Conc: 44.35 ng/ml



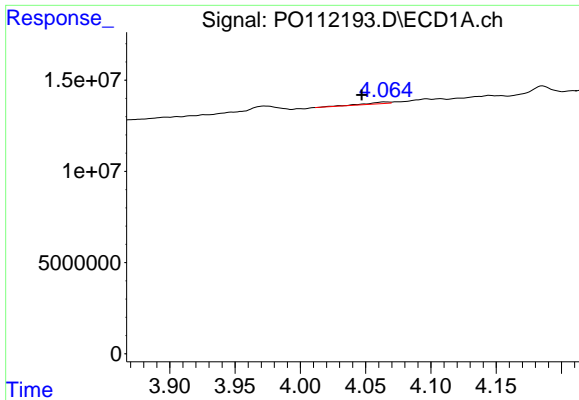
#10 AR-1221-3

R.T.: 4.065 min
 Delta R.T.: 0.020 min
 Response: 1173020
 Conc: 4.35 ng/ml



#10 AR-1221-3

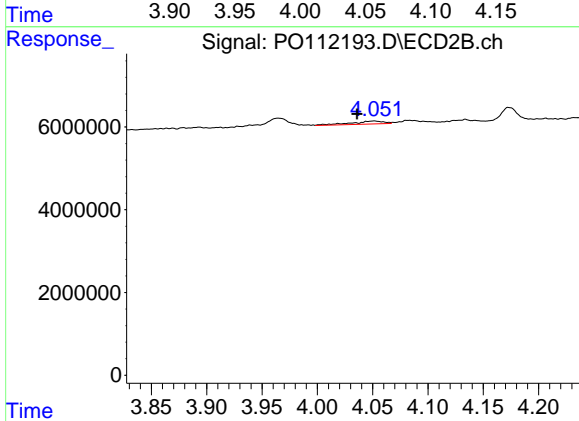
R.T.: 4.051 min
 Delta R.T.: 0.016 min
 Response: 1503432
 Conc: 7.96 ng/ml



#11 AR-1232-1

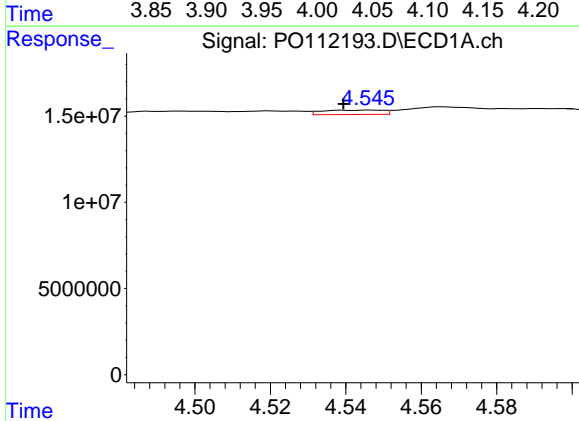
R.T.: 4.065 min
 Delta R.T.: 0.018 min
 Response: 1173020
 Conc: 5.46 ng/ml

Instrument :
 ECD_O
 ClientSampleId :
 TP-23-99



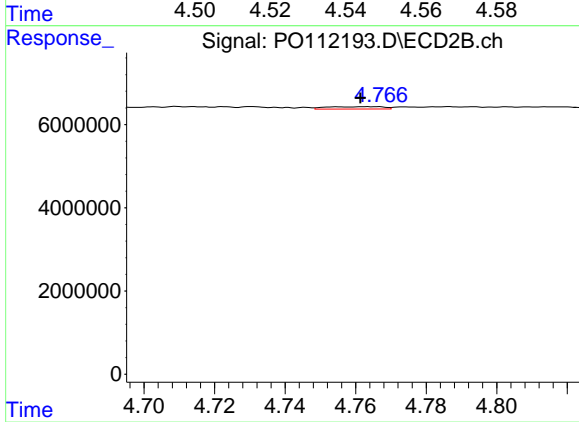
#11 AR-1232-1

R.T.: 4.051 min
 Delta R.T.: 0.015 min
 Response: 1503432
 Conc: 10.02 ng/ml



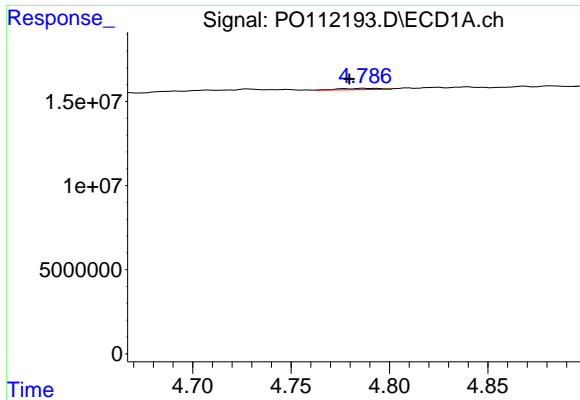
#12 AR-1232-2

R.T.: 4.547 min
 Delta R.T.: 0.007 min
 Response: 2850174
 Conc: 25.08 ng/ml



#12 AR-1232-2

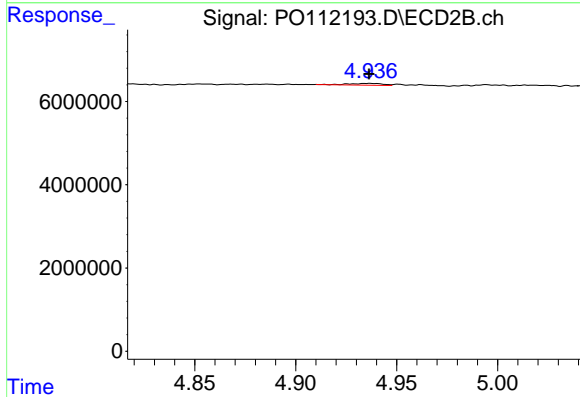
R.T.: 4.755 min
 Delta R.T.: -0.006 min
 Response: 633873
 Conc: 4.14 ng/ml



#13 AR-1232-3

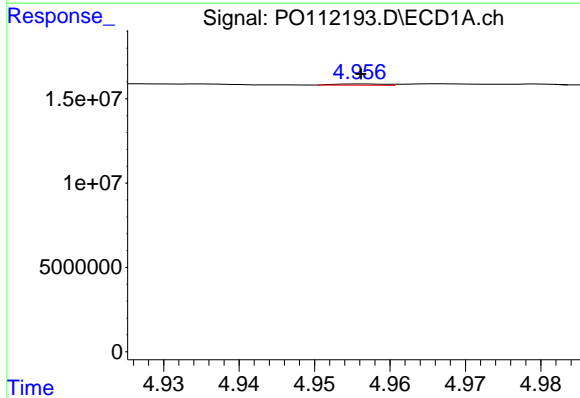
R.T.: 4.787 min
 Delta R.T.: 0.007 min
 Response: 1079666
 Conc: 4.71 ng/ml

Instrument :
 ECD_O
 ClientSampleId :
 TP-23-99



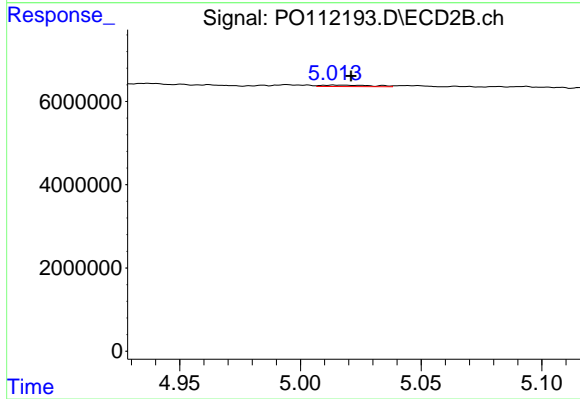
#13 AR-1232-3

R.T.: 4.936 min
 Delta R.T.: 0.000 min
 Response: 483091
 Conc: 6.40 ng/ml



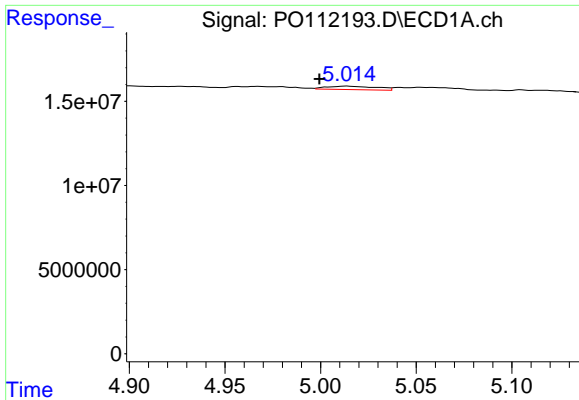
#14 AR-1232-4

R.T.: 4.956 min
 Delta R.T.: 0.000 min
 Response: 314170
 Conc: 2.75 ng/ml



#14 AR-1232-4

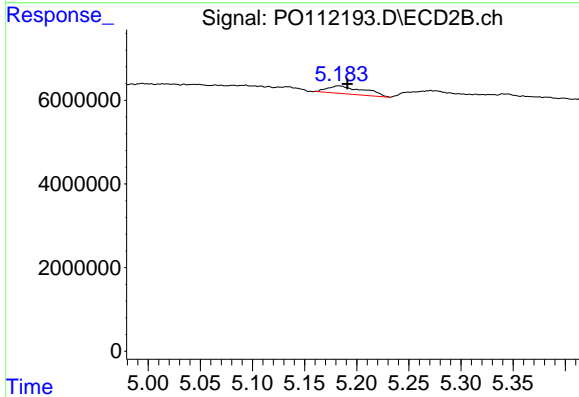
R.T.: 5.014 min
 Delta R.T.: -0.007 min
 Response: 497562
 Conc: 7.54 ng/ml



#15 AR-1232-5

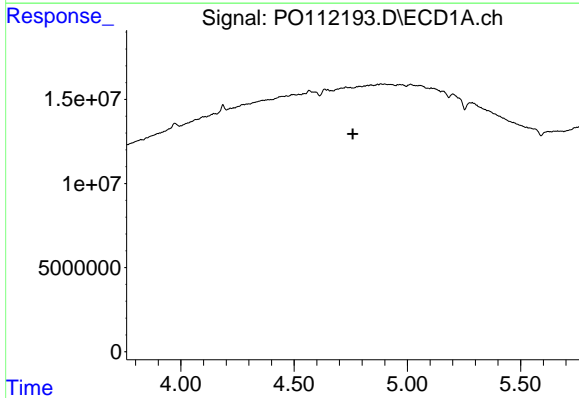
R.T.: 5.014 min
 Delta R.T.: 0.014 min
 Response: 3735904
 Conc: 50.90 ng/ml

Instrument :
 ECD_O
 ClientSampleId :
 TP-23-99



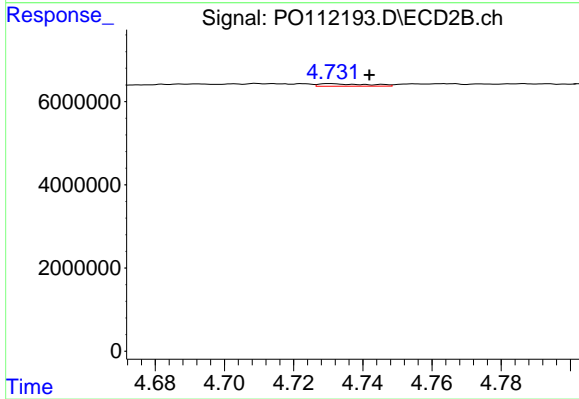
#15 AR-1232-5

R.T.: 5.183 min
 Delta R.T.: -0.008 min
 Response: 4473906
 Conc: 60.25 ng/ml



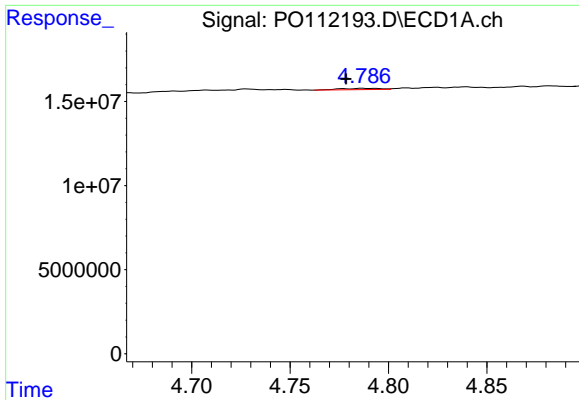
#16 AR-1242-1

R.T.: 4.748 min
 Delta R.T.: -0.011 min
 Response: -102396
 Conc: N.D.



#16 AR-1242-1

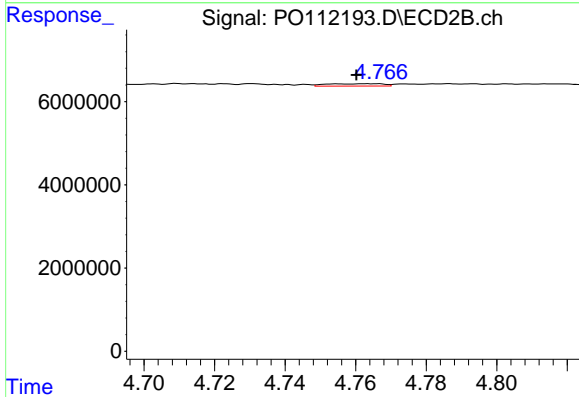
R.T.: 4.731 min
 Delta R.T.: -0.011 min
 Response: 605411
 Conc: 3.12 ng/ml



#17 AR-1242-2

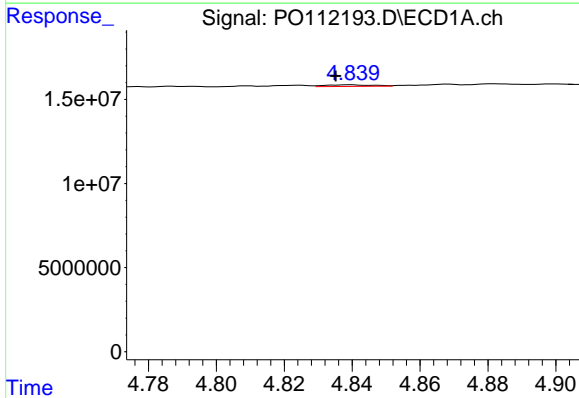
R.T.: 4.787 min
 Delta R.T.: 0.009 min
 Response: 1079666
 Conc: 2.53 ng/ml

Instrument :
 ECD_O
 ClientSampleId :
 TP-23-99



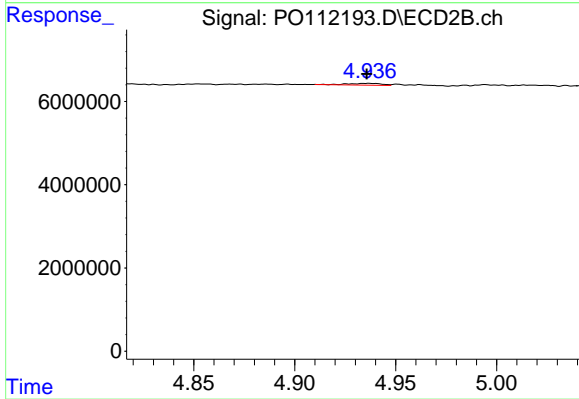
#17 AR-1242-2

R.T.: 4.755 min
 Delta R.T.: -0.005 min
 Response: 633873
 Conc: 2.24 ng/ml



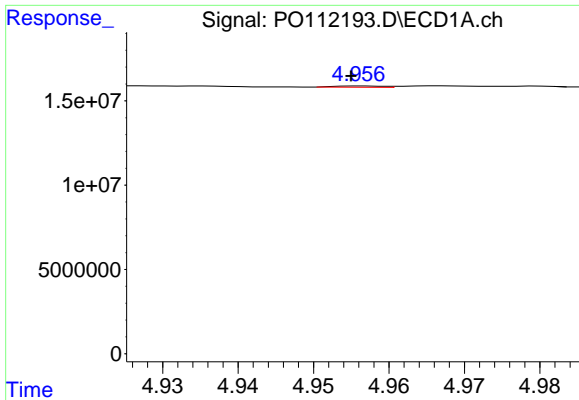
#18 AR-1242-3

R.T.: 4.840 min
 Delta R.T.: 0.005 min
 Response: 874978
 Conc: 3.20 ng/ml



#18 AR-1242-3

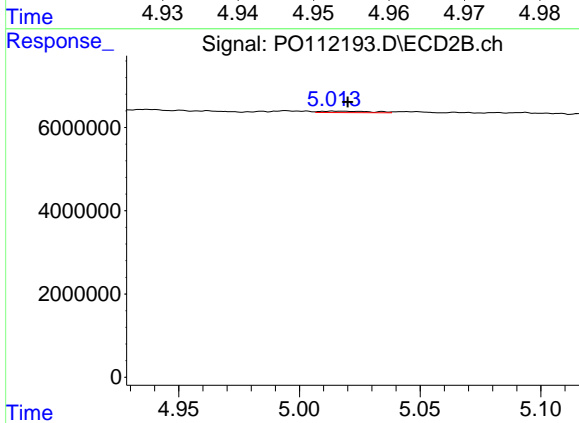
R.T.: 4.936 min
 Delta R.T.: 0.000 min
 Response: 483091
 Conc: 3.32 ng/ml



#19 AR-1242-4

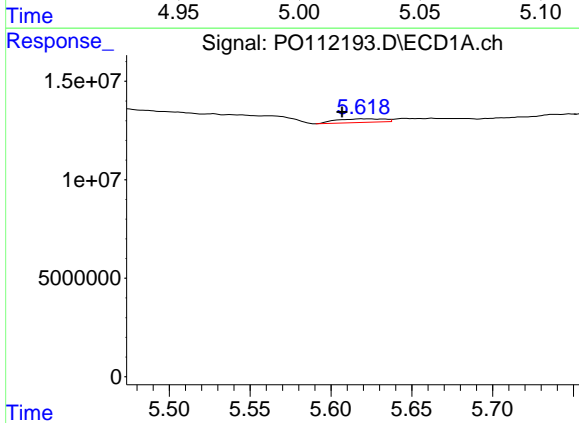
R.T.: 4.956 min
 Delta R.T.: 0.001 min
 Response: 314170
 Conc: 1.39 ng/ml

Instrument :
 ECD_O
 ClientSampleId :
 TP-23-99



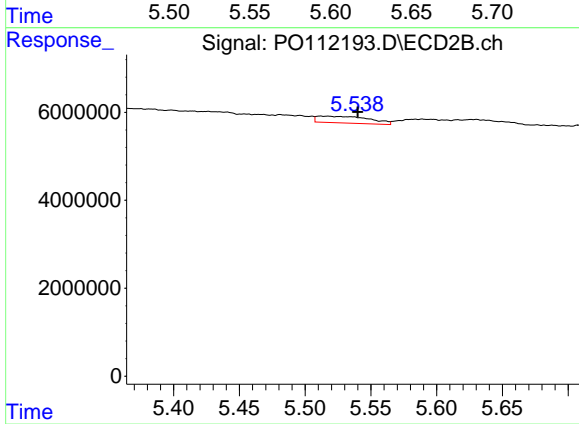
#19 AR-1242-4

R.T.: 5.014 min
 Delta R.T.: -0.006 min
 Response: 497562
 Conc: 3.51 ng/ml



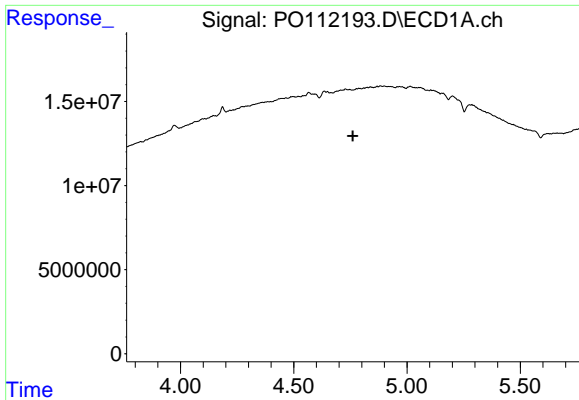
#20 AR-1242-5

R.T.: 5.619 min
 Delta R.T.: 0.012 min
 Response: 3819581
 Conc: 18.04 ng/ml



#20 AR-1242-5

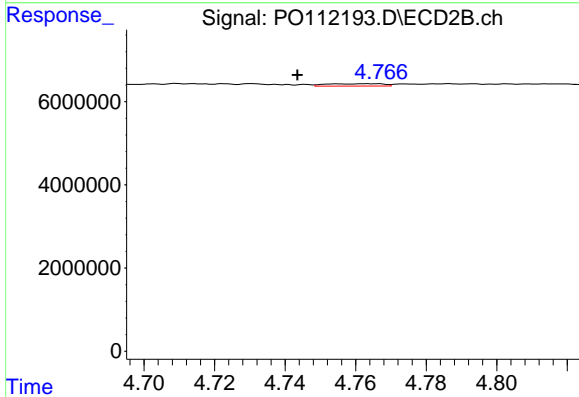
R.T.: 5.512 min
 Delta R.T.: -0.028 min
 Response: 4207856
 Conc: 23.15 ng/ml



#21 AR-1248-1

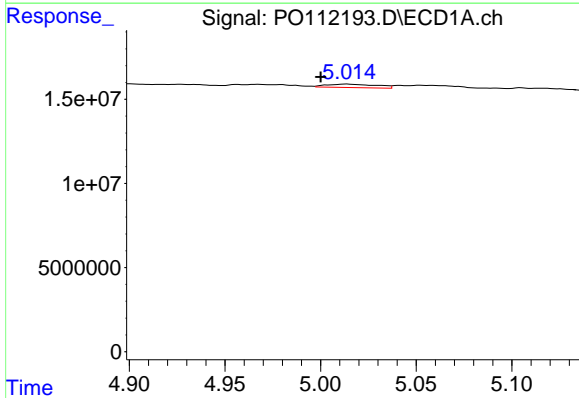
R.T.: 4.748 min
 Delta R.T.: -0.013 min
 Response: -102396
 Conc: N.D.

Instrument :
 ECD_O
 ClientSampleId :
 TP-23-99



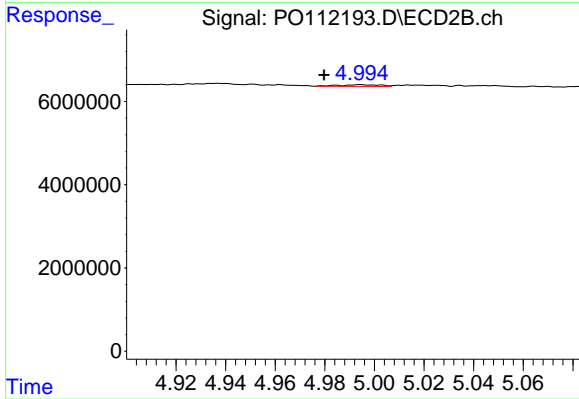
#21 AR-1248-1

R.T.: 4.755 min
 Delta R.T.: 0.012 min
 Response: 633873
 Conc: 4.11 ng/ml



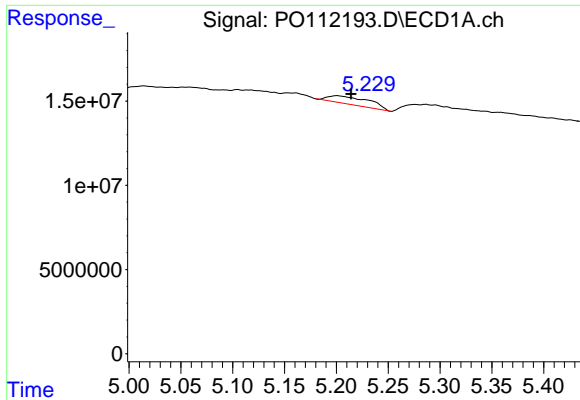
#22 AR-1248-2

R.T.: 5.014 min
 Delta R.T.: 0.014 min
 Response: 3735904
 Conc: 12.12 ng/ml



#22 AR-1248-2

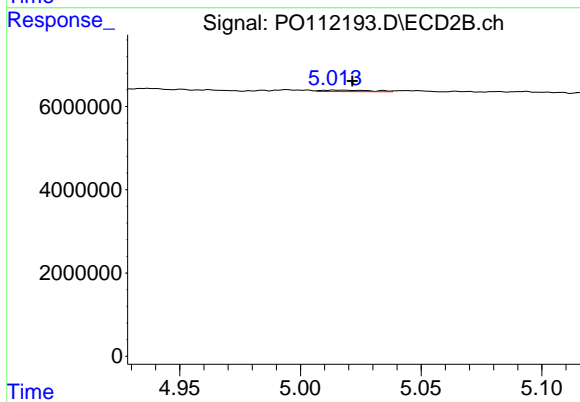
R.T.: 4.994 min
 Delta R.T.: 0.015 min
 Response: 453609
 Conc: 2.20 ng/ml



#23 AR-1248-3

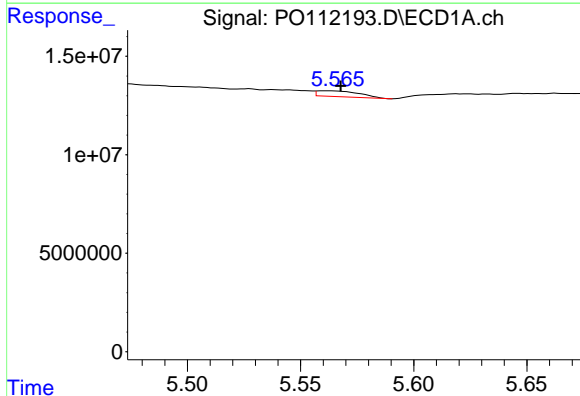
R.T.: 5.201 min
 Delta R.T.: -0.013 min
 Response: 13148973
 Conc: 32.28 ng/ml

Instrument :
 ECD_O
 ClientSampleId :
 TP-23-99



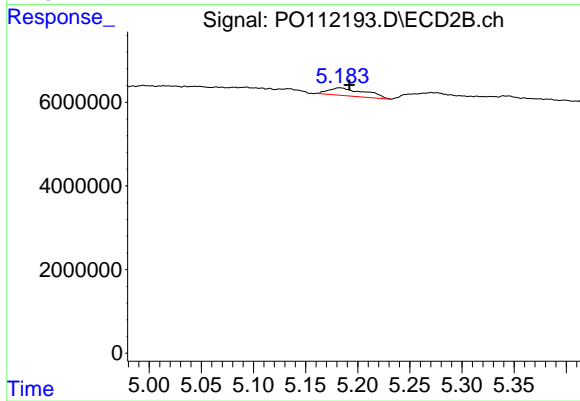
#23 AR-1248-3

R.T.: 5.014 min
 Delta R.T.: -0.007 min
 Response: 497562
 Conc: 2.32 ng/ml



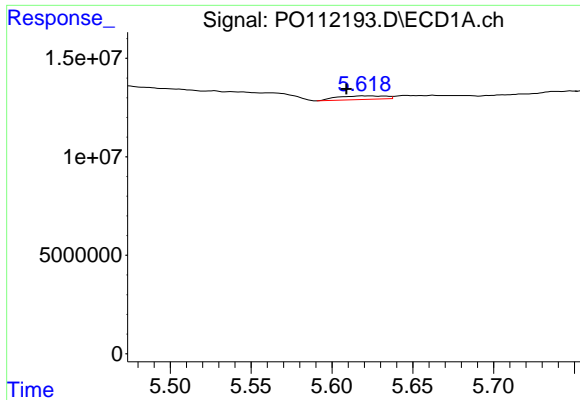
#24 AR-1248-4

R.T.: 5.562 min
 Delta R.T.: -0.006 min
 Response: 3775446
 Conc: 6.54 ng/ml



#24 AR-1248-4

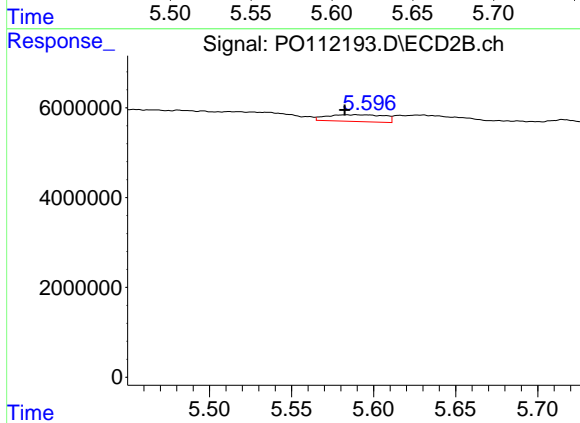
R.T.: 5.183 min
 Delta R.T.: -0.009 min
 Response: 4473906
 Conc: 17.29 ng/ml



#25 AR-1248-5

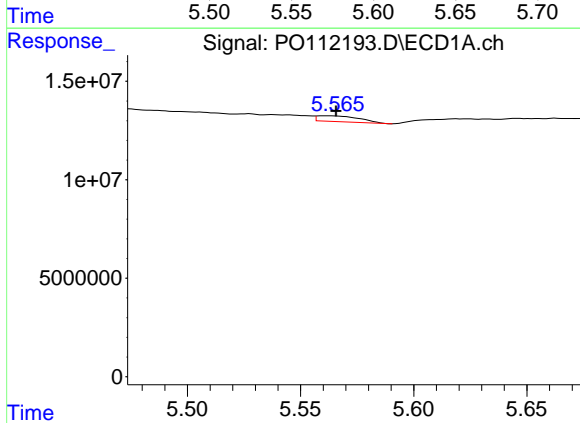
R.T.: 5.619 min
 Delta R.T.: 0.010 min
 Response: 3819581
 Conc: 9.79 ng/ml

Instrument :
 ECD_O
 ClientSampleId :
 TP-23-99



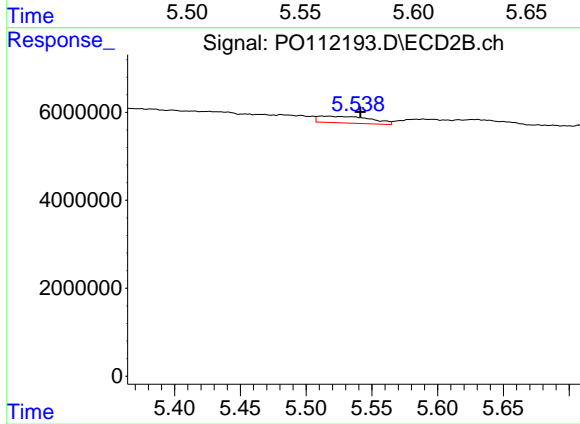
#25 AR-1248-5

R.T.: 5.589 min
 Delta R.T.: 0.007 min
 Response: 3656881
 Conc: 14.60 ng/ml



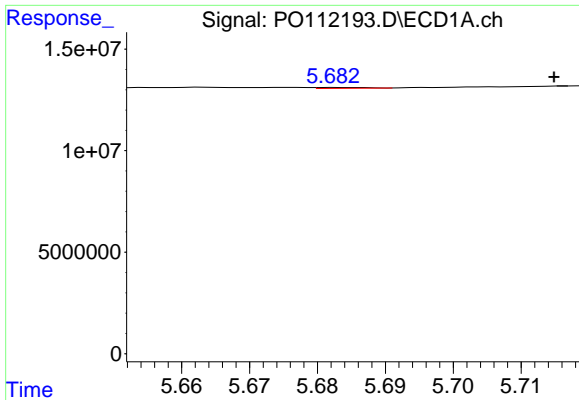
#26 AR-1254-1

R.T.: 5.562 min
 Delta R.T.: -0.003 min
 Response: 3775446
 Conc: 6.14 ng/ml



#26 AR-1254-1

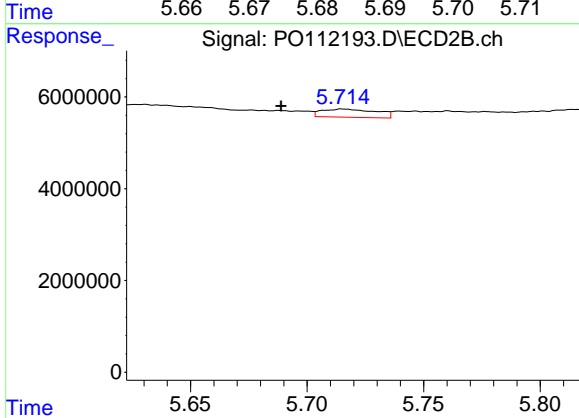
R.T.: 5.512 min
 Delta R.T.: -0.029 min
 Response: 4207856
 Conc: 11.04 ng/ml



#27 AR-1254-2

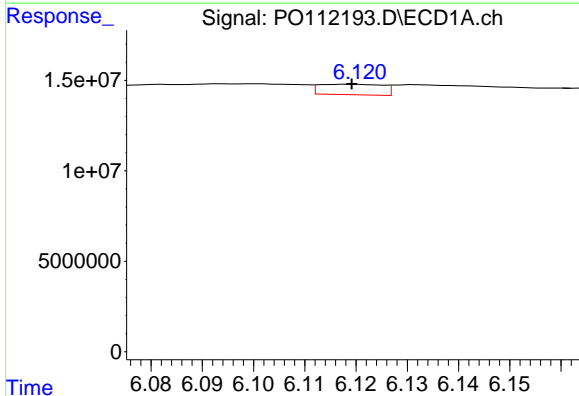
R.T.: 5.684 min
 Delta R.T.: -0.031 min
 Response: 228999
 Conc: 0.43 ng/ml

Instrument :
 ECD_O
 ClientSampleId :
 TP-23-99



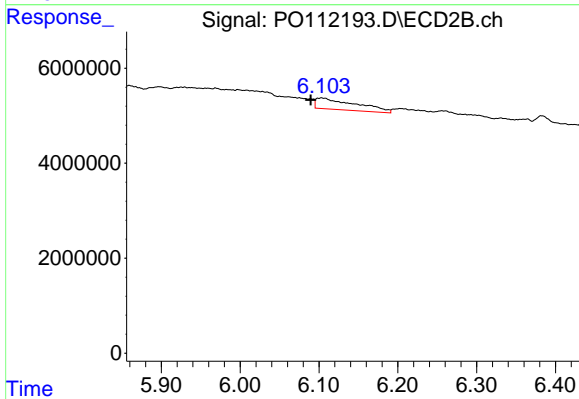
#27 AR-1254-2

R.T.: 5.715 min
 Delta R.T.: 0.027 min
 Response: 2900007
 Conc: 8.74 ng/ml



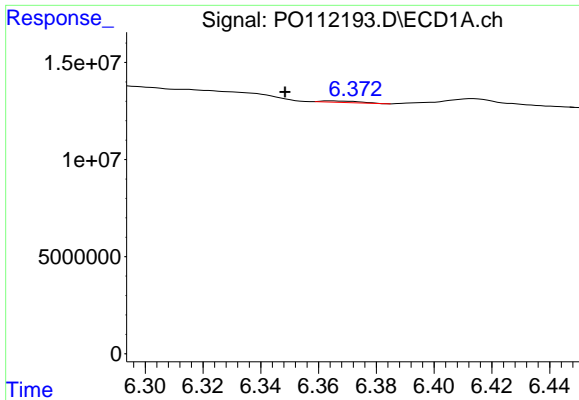
#28 AR-1254-3

R.T.: 6.119 min
 Delta R.T.: 0.000 min
 Response: 4980510
 Conc: 5.93 ng/ml



#28 AR-1254-3

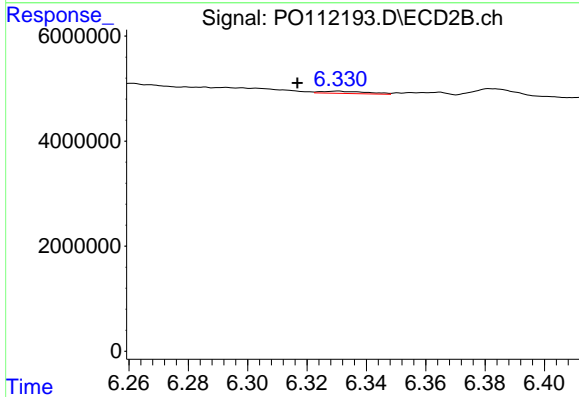
R.T.: 6.103 min
 Delta R.T.: 0.014 min
 Response: 8353355
 Conc: 17.33 ng/ml



#29 AR-1254-4

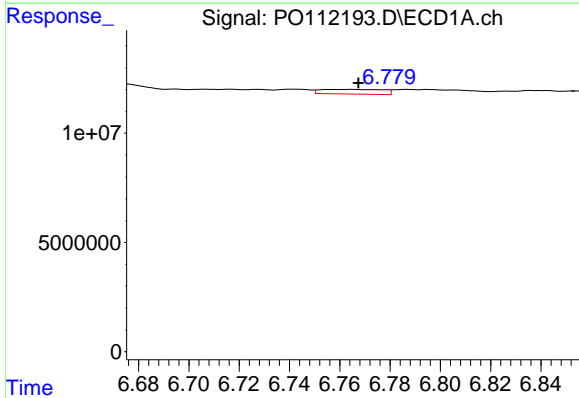
R.T.: 6.364 min
 Delta R.T.: 0.016 min
 Response: 653157
 Conc: 1.36 ng/ml

Instrument :
 ECD_O
 ClientSampleId :
 TP-23-99



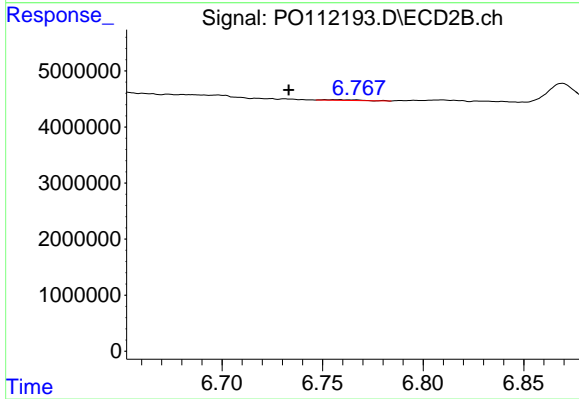
#29 AR-1254-4

R.T.: 6.330 min
 Delta R.T.: 0.014 min
 Response: 458088
 Conc: 1.76 ng/ml



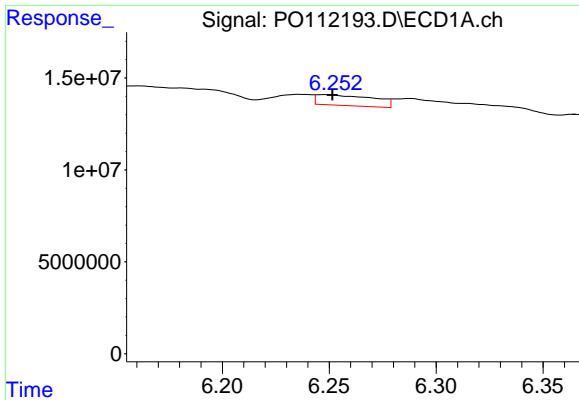
#30 AR-1254-5

R.T.: 6.765 min
 Delta R.T.: -0.002 min
 Response: 3677029
 Conc: 4.75 ng/ml



#30 AR-1254-5

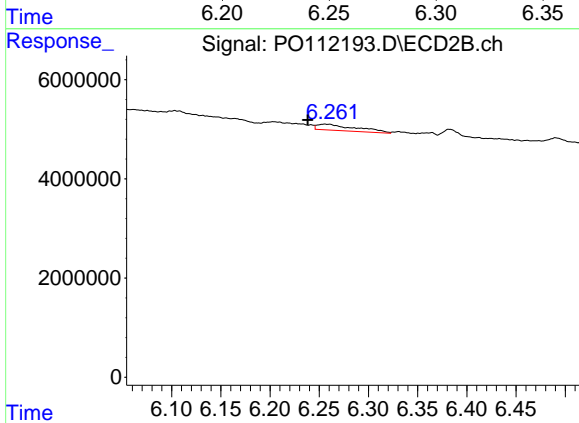
R.T.: 6.756 min
 Delta R.T.: 0.023 min
 Response: 137918
 Conc: 0.39 ng/ml



#31 AR-1260-1

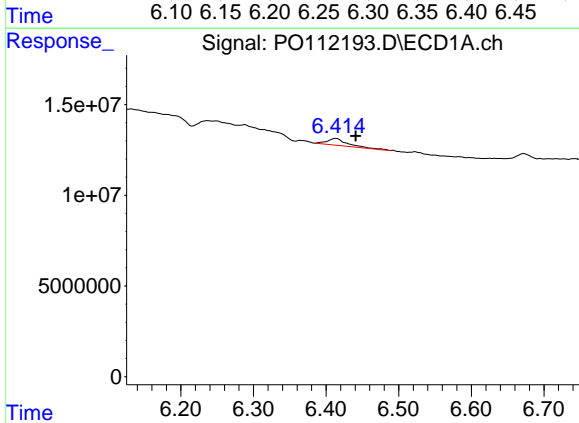
R.T.: 6.248 min
 Delta R.T.: -0.003 min
 Response: 10751956
 Conc: 21.45 ng/ml

Instrument :
 ECD_O
 ClientSampleId :
 TP-23-99



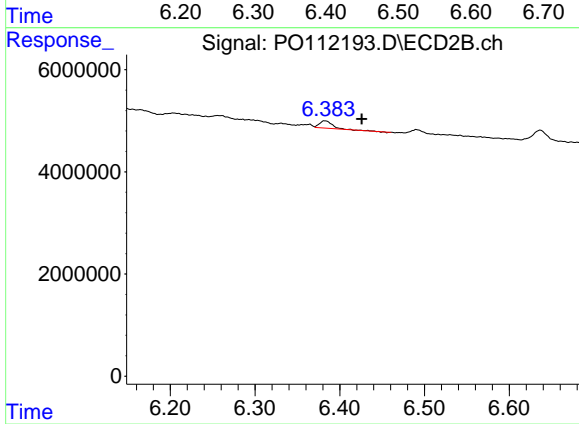
#31 AR-1260-1

R.T.: 6.256 min
 Delta R.T.: 0.017 min
 Response: 3346568
 Conc: 11.93 ng/ml



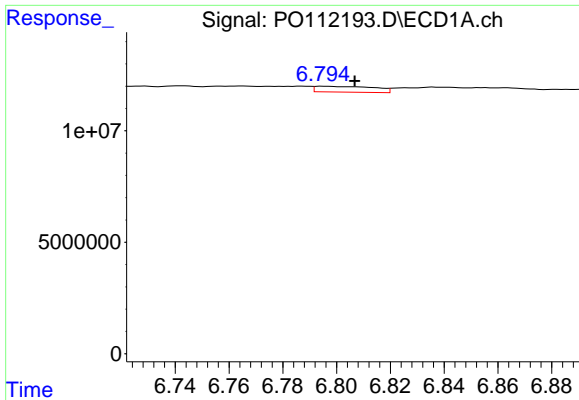
#32 AR-1260-2

R.T.: 6.413 min
 Delta R.T.: -0.027 min
 Response: 7645513
 Conc: 10.36 ng/ml



#32 AR-1260-2

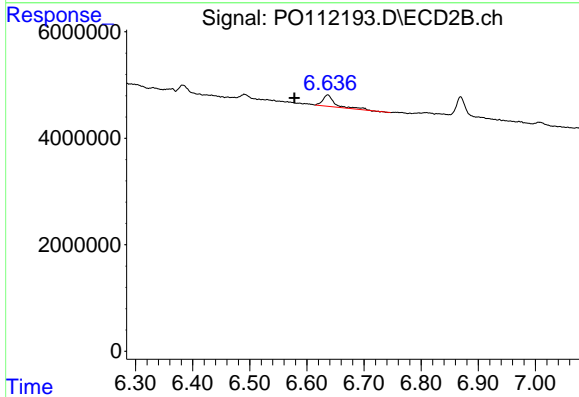
R.T.: 6.382 min
 Delta R.T.: -0.044 min
 Response: 1125090
 Conc: 3.31 ng/ml



#33 AR-1260-3

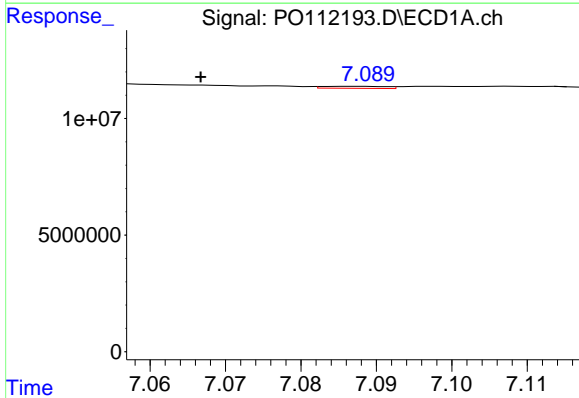
R.T.: 6.795 min
 Delta R.T.: -0.012 min
 Response: 3986326
 Conc: 6.08 ng/ml

Instrument :
 ECD_O
 ClientSampleId :
 TP-23-99



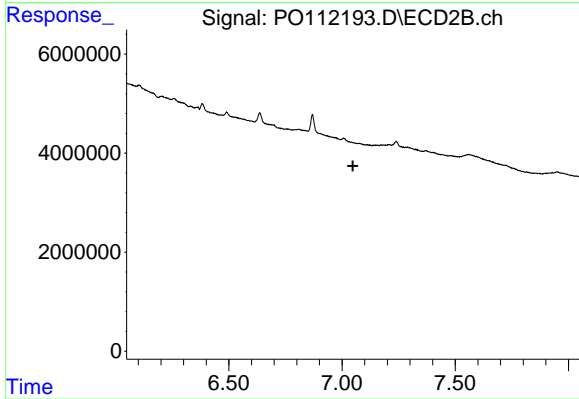
#33 AR-1260-3

R.T.: 6.637 min
 Delta R.T.: 0.059 min
 Response: 3240890
 Conc: 11.76 ng/ml



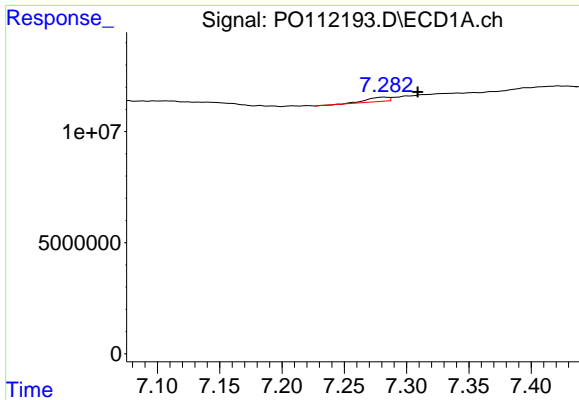
#34 AR-1260-4

R.T.: 7.088 min
 Delta R.T.: 0.021 min
 Response: 496132
 Conc: 1.14 ng/ml



#34 AR-1260-4

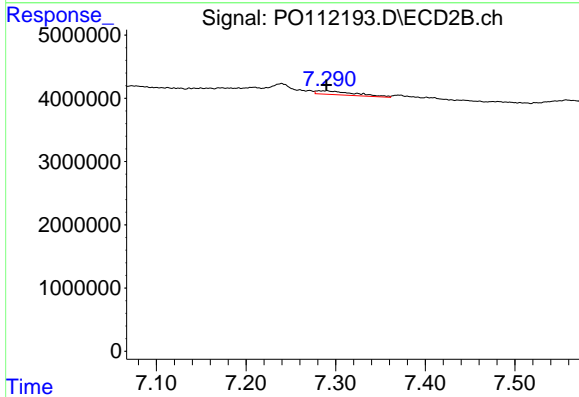
R.T.: 7.007 min
 Delta R.T.: -0.040 min
 Response: -930328
 Conc: N.D.



#35 AR-1260-5

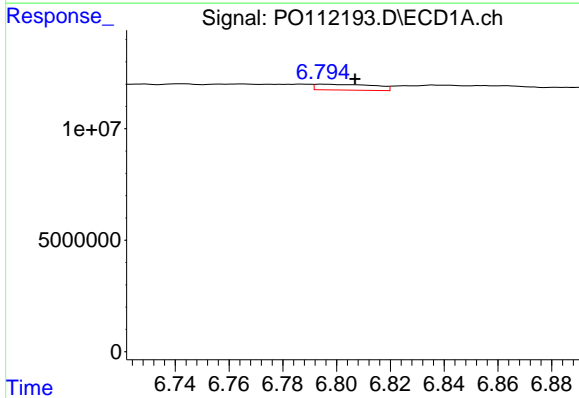
R.T.: 7.282 min
 Delta R.T.: -0.027 min
 Response: 2433753
 Conc: 1.93 ng/ml

Instrument :
 ECD_O
 ClientSampleId :
 TP-23-99



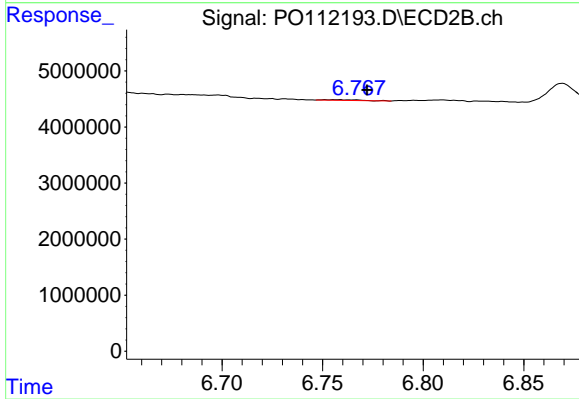
#35 AR-1260-5

R.T.: 7.287 min
 Delta R.T.: -0.002 min
 Response: 1710346
 Conc: 3.82 ng/ml



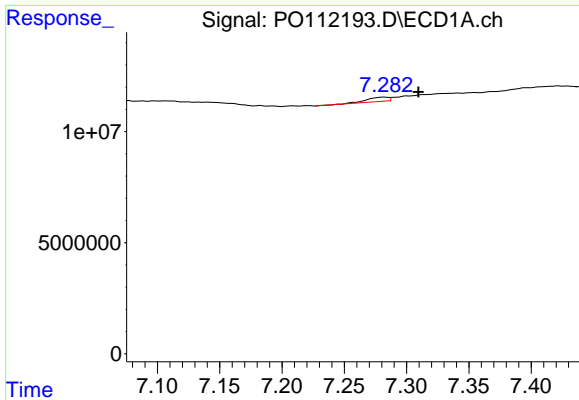
#36 AR-1262-1

R.T.: 6.795 min
 Delta R.T.: -0.012 min
 Response: 3986326
 Conc: 3.90 ng/ml



#36 AR-1262-1

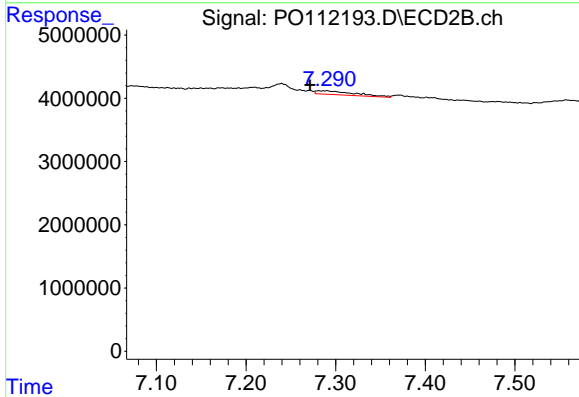
R.T.: 6.756 min
 Delta R.T.: -0.016 min
 Response: 137918
 Conc: 0.34 ng/ml



#37 AR-1262-2

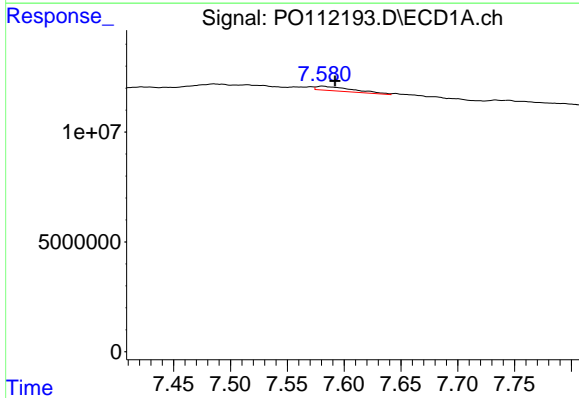
R.T.: 7.282 min
 Delta R.T.: -0.028 min
 Response: 2433753
 Conc: 1.48 ng/ml

Instrument :
 ECD_O
 ClientSampleId :
 TP-23-99



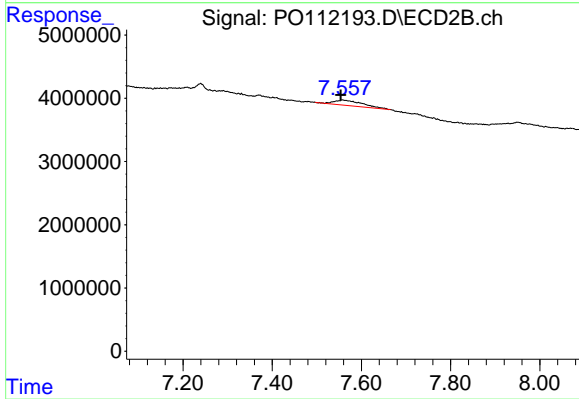
#37 AR-1262-2

R.T.: 7.287 min
 Delta R.T.: 0.016 min
 Response: 1710346
 Conc: 3.34 ng/ml



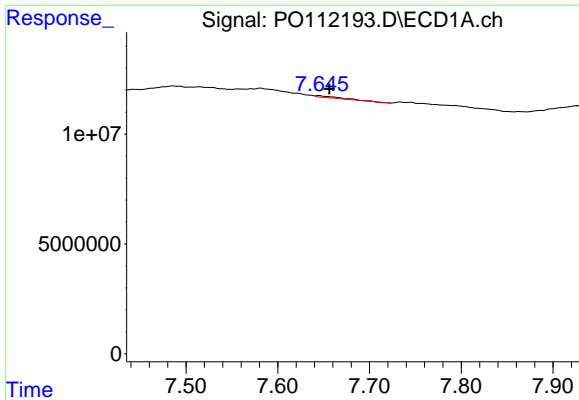
#38 AR-1262-3

R.T.: 7.581 min
 Delta R.T.: -0.011 min
 Response: 4452601
 Conc: 6.94 ng/ml



#38 AR-1262-3

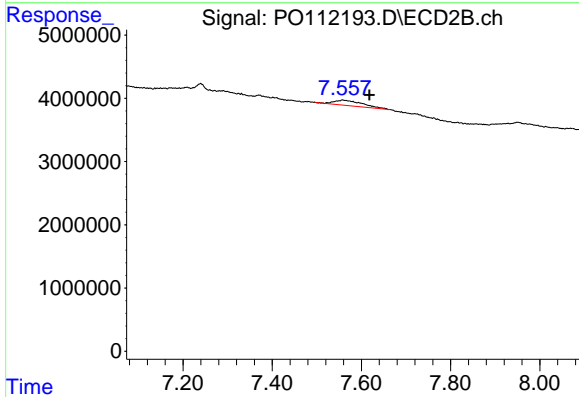
R.T.: 7.558 min
 Delta R.T.: 0.004 min
 Response: 3649161
 Conc: 20.33 ng/ml



#39 AR-1262-4

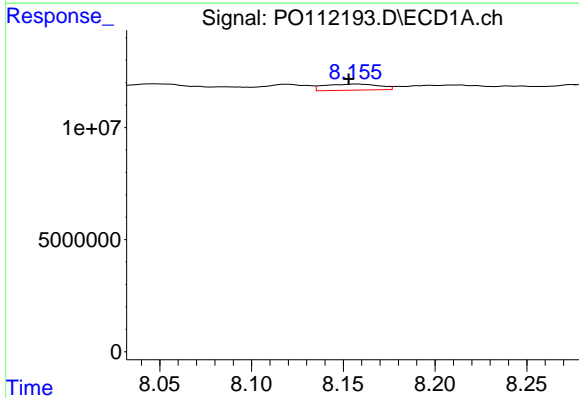
R.T.: 7.645 min
 Delta R.T.: -0.011 min
 Response: 1357400
 Conc: 1.27 ng/ml

Instrument :
 ECD_O
 ClientSampleId :
 TP-23-99



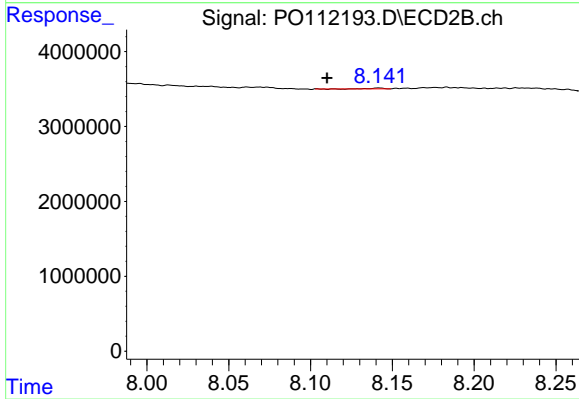
#39 AR-1262-4

R.T.: 7.558 min
 Delta R.T.: -0.060 min
 Response: 3649161
 Conc: 12.54 ng/ml



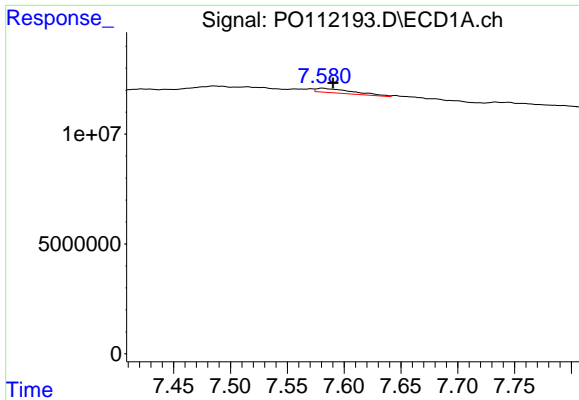
#40 AR-1262-5

R.T.: 8.157 min
 Delta R.T.: 0.004 min
 Response: 5604686
 Conc: 12.51 ng/ml



#40 AR-1262-5

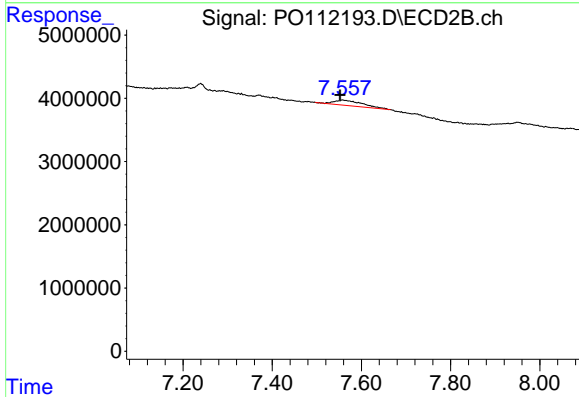
R.T.: 8.142 min
 Delta R.T.: 0.032 min
 Response: 52213
 Conc: 0.49 ng/ml



#41 AR-1268-1

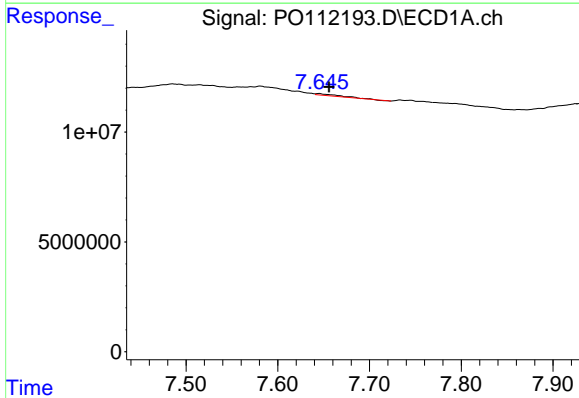
R.T.: 7.581 min
 Delta R.T.: -0.009 min
 Response: 4452601
 Conc: 2.42 ng/ml

Instrument :
 ECD_O
 ClientSampleId :
 TP-23-99



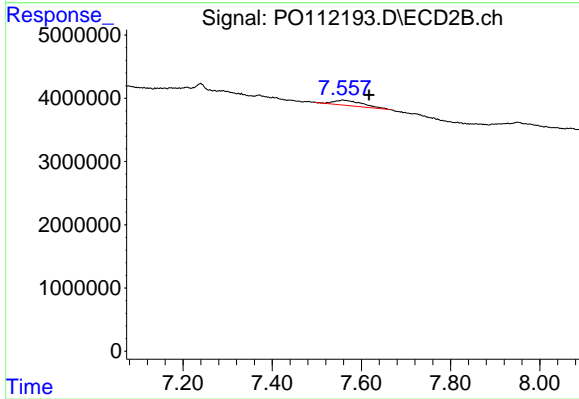
#41 AR-1268-1

R.T.: 7.558 min
 Delta R.T.: 0.006 min
 Response: 3649161
 Conc: 7.43 ng/ml



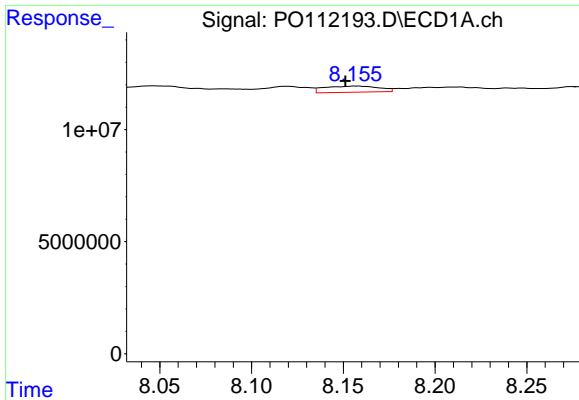
#42 AR-1268-2

R.T.: 7.645 min
 Delta R.T.: -0.011 min
 Response: 1357400
 Conc: 0.87 ng/ml



#42 AR-1268-2

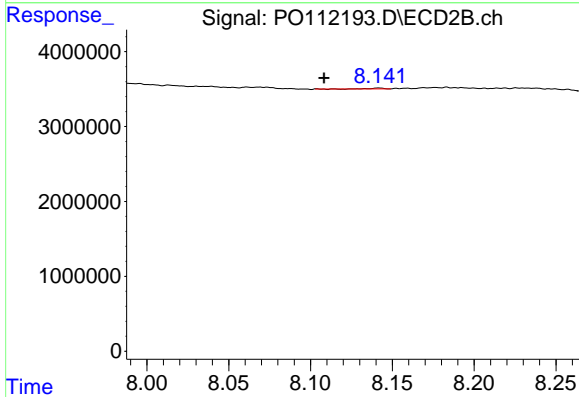
R.T.: 7.558 min
 Delta R.T.: -0.059 min
 Response: 3649161
 Conc: 8.75 ng/ml



#44 AR-1268-4

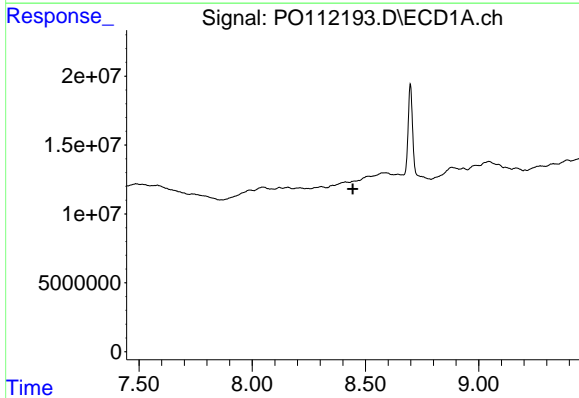
R.T.: 8.157 min
 Delta R.T.: 0.006 min
 Response: 5604686
 Conc: 11.67 ng/ml

Instrument :
 ECD_O
 ClientSampleId :
 TP-23-99



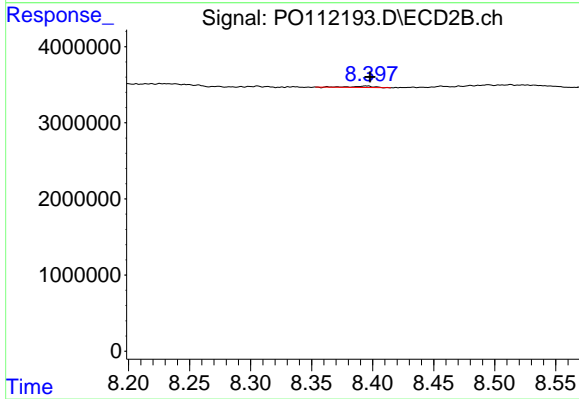
#44 AR-1268-4

R.T.: 8.142 min
 Delta R.T.: 0.033 min
 Response: 52213
 Conc: 0.47 ng/ml



#45 AR-1268-5

R.T.: 8.452 min
 Delta R.T.: 0.007 min
 Response: -78643
 Conc: N.D.



#45 AR-1268-5

R.T.: 8.394 min
 Delta R.T.: -0.003 min
 Response: 244937
 Conc: 0.34 ng/ml